



THE PICK & SHOVEL

In association with



The Midwest Federation of Mineralogical and Geological Societies



The American Federation of Mineralogical Societies

The purpose of this corporation shall be to study, promote an interest in, and disseminate knowledge of lapidary and various Earth Sciences including but not necessarily limited to Geology, Paleontology and Mineralogy. It shall be a particular purpose of the corporation to provide education in these fields to its members and the general public, especially to youth and student groups.

Current club by-laws can be found at www.lincolngemmineralclub.org/About/General Information.

GENERAL MEETINGS

Third Thursday of the Month, except for January (3rd Sunday), December (1st Sunday), and summer break (June, July, August). Bethany Park Shelter House, 65th & Vine

Meeting Times: Juniors meet at 6:15 p.m.
Adults meet at 7:00 p.m.

Next meeting: September 18, 2025

BOARD MEETINGS

Until further notice, Board Meetings will be held at 6:30 p.m. on the first Thursday of each month.

Next Board Meeting:
Thursday, September 4, 2025 at 6:30 p.m.
Vera Lyman's Residence

Persons of general membership are invited to attend Board meetings and offer agenda items.

2025 BOARD OF DIRECTORS

President: Brett Jurgens, 402.850.3256, quartz89@aol.com

1st Vice-President: Jayne Beer, 402.890.3307, JBeer60070@aol.com

2nd Vice-President: Clyde Ogg, 402.326.8682, clydeogg55@gmail.com

Treasurer: Vera Lyman, 402.464.6089

Secretary: Sharon Marburger, 402.429.3323, lgmc.editor@outlook.com

Board Member: Corey Beer, 402.466.6628

Board Member: Jeff Kubitz, 402.540.9395, jkubitz@neb.rr.com

Board Member: Mike Stiles, 402.890.1760, mcstiles72@outlook.com

Board Member: Charles Wooldridge, 402.975.0416, charles.wooldridgeii@gmail.com

ANNOUNCEMENTS & CLUB FUN

DATES TO REMEMBER

July 26, 2025 - Rock Party at Hidden Gems
Labor Day Weekend - President's Field Trip to Crawford, NE

River Field Trip

See page 5 for details

Looking for volunteers to help out in the Rock Room at the Camp Creek Threshers' annual show. See the President's Message on pages 3 & 4 for more information.

July 19 and 20, 2025

Contact Brett if you would like to participate.

JULY BIRTHDAYS

- Leahh Anderson**
- Randy Kessler**
- Tammy Kubitz**
- Tammy Jeanneret**
- Sharon Marburger**
- John Moss**
- Katherine Schwartman**
- Betty Selby-Syslo**



ADVERTISING INFORMATION

Advertising by rock / hobby business or interest is permitted with the approval of the Board of Directors. Contact the Editor with your proposed ad. The rate is set at \$20.00 per full page; \$10.00 per 1/2 page; \$5.00 per 1/4 page (minimum) per issue, paid in advance to the Club treasurer. Ads will be placed throughout the newsletter as space permits.

July Rock Party at Hidden Gems

3227 S. 13th Street
Indian Village Shopping Center
Saturday, July 26, 2025
5:00 p.m.

"Favorite Summertime Dishes"

It will probably be quite warm in the shop, so dress appropriately. Bring your projects to work on. There will be no charge to use the club lapidary equipment during this event.

Please send your hobby-related photos with captions or explanations for publication in the Pick & Shovel. Field trips, lapidary projects, fossil projects, metal projects, wire wrapping, tumbling, or any other activity of interest to the club. Your project may inspire someone else. Send via email (lgmc.editor@outlook.com) or via Facebook Messenger to Sharon Marburger (<https://www.facebook.com/mamamar7880>).

PICK & SHOVEL STAFF

- PUBLISHER:**
Lincoln Gem & Mineral Club, Inc.
P.O. Box 5342
Lincoln, Nebraska 68505
- EDITOR:**
Sharon Marburger
E-mail: lgmc.editor@outlook.com
- CIRCULATION:**
Vera Lyman and Donitte Stiles;
402.464.6089
Sharon Marburger;
402.429.3323
- DEADLINE:**
Last Sunday of the month.

Follow us on Facebook:

<https://www.facebook.com/groups/223555904325876>



PRESIDENT'S MESSAGE

By Brett Jurgens, President

Hello LGMC.

I'd like to give a standing ovation to the Beer family for once again hosting the Summer Gem Fest. There is a lot of work that happens even before setup day.

I'd also like to thank everyone who helped out at the admission gate. We had volunteers willing to be out there all day but fortunately had enough volunteers so that wasn't necessary. Attendance was superb. We had roughly 575 adults and kids, a more than 40% increase from last year. I can't imagine the number we would have had if it hadn't been so hot. Saturday morning we had so many people coming early to beat the heat that Brian had to mow to extend the parking lot. That has never happened before!

Club members working the admission gate asked attendees how they had heard of the event. The vast majority was Facebook, but quite a few also mentioned posters, fliers and our new yard signs.

There was a large uptick in the number of kids attending. We had advertised our kids' activities, and implemented a new passport activity with prizes this year. Kids were given a stamp sheet at the admission gate listing five different locations to visit; included were Rock Pile, Gem Dig, Selfie Station, Flint Knapping Demo, and Tumbled Stone Giveaway. Upon getting all five stamps, kids turned in the sheet at the Rock Pile to pick out two tumbled stones.

At the last meeting, Andrea K. volunteered to take over the rock pile/silent auction from Sharon. Sharon was able to show her the ropes at Gem Fest and then hand over the reins. A big thanks to Sharon for managing the rock pile for so many years. And a big thank you to Andrea for taking it over.

While we are talking about it, the rock pile/silent auction is a big fundraiser for the club and is reliant on donated material. Interest in and sales are at their best when new, fresh material is offered. Please do your part by donating some material. When on your collecting trips, pick up a few extra specimens for the rock pile.

I have said it before and I'll say it again, our club is all about rocks, conversation, and food. Whether it's a meeting or a rock party, our club always puts out a spread of food. And this Gem Fest was no different. I was impressed with the amount of food members brought for the potluck Saturday evening. We had talked about not having much refrigeration space at the farm. When it came time for the meal, many different salads and sides quickly emerged from coolers. There was quite the spread of food, and we served over 120 brats and hot dogs. A big thank you to everyone who helped, brought food, and also simply stuck around for the meal. I know the temptation of driving off in air conditioning was real.

On Sunday morning we had hot pancakes and sausages before we opened. The sausages were actually stadium brats cut in half and cooked on the griddle. Surprisingly, I got

(Continued on page 5)

JUNIORS

by Brett Jurgens, Junior Leader

Hello Juniors.

I hope your summer is going well, and not as fast as mine seems to be going.

Gem Fest was a great success, although warm. I saw a few of you there. It would be great to see more of you there in the future.

It sounds like quite a few of you went on the field trip. That is fantastic to hear. I wish I could have gone; unfortunately, I had to work. I also hear that we should nickname Joy "Eagle Eyes". From what I am told, all of you on the trip had fantastic luck. We won't have a general meeting until this fall, but I want to see all your summer finds then.

Don't forget about the Rock Party at Hidden Gems on Saturday, July 26.

If you had fun on the field trip, think about going to the Crawford Swap. It is definitely more of a time commitment, and an overnight stay but there are some fantastic collecting areas up there. If you have any questions let me know.

Have a great summer.

GEM FEST SUCCESS

By Jayne Beer

The few days before the event, I was very concerned about the impending not super weather forecast for the weekend. I was very worried that we would not have customers show up. We went through the process of setting up in the heat and trying to get tents secured enough that they wouldn't blow away in the strong winds we were having.

LO and BEHOLD! Come Saturday morning, a great number of people showed up! I jumped for joy and relief when my daughter, Kelly, came and told me that the parking lot was full and they had to open up a second area for parking. This was the first time in the history of Gem Fest that we have had to use overflow parking. I am sure that people thought they would come early to beat the heat, but once people got there, they stayed and shopped and enjoyed the activities.

See Gem Fest pictures taken by club members sprinkled throughout this newsletter.



A group of "Passporters" watching Phil Geib demonstrate arrowhead knapping

MAY BOARD MEETING MINUTES

June 5, 2025 at Vera Lyman’s Residence
by Sharon Marburger, 2025 Secretary

Roll Call

President:	Brett Jurgens	Present
1st Vice Pres.:	Jayne Beer	Present
2nd Vice Pres.:	Clyde Ogg	Excused
Treasurer:	Vera Lyman	Present
Secretary:	Sharon Marburger	Present
Board:	Charles Wooldridge	Present
	Mike Stiles	Present
	Jeff Kubitz	Present
	Corey Beer	Present

Visitors: Ed Ridge, Jim Marburger, and Donitte Stiles.

The meeting was called to order at 6:44 p.m. by President Brett Jurgens.

Sharon read the minutes of the last meeting. Wooly moved to accept the minutes as read, second by Jeff. Motion carried.

Vera distributed the Treasurer’s Report. Sharon moved to accept the report with two typo corrections, second by Jeff. Motion carried. Sharon stated that the Gem Fest pre-registration booth rents had not yet been transferred to the bank account from PayPal. That will be done immediately following Gem Fest.

OLD BUSINESS:

Wooly gave the particulars of the Fairbury area field trip. Meet at the east parking lot of Bethany Park in order to car pool. Arrive at Casey’s in Fairbury at 10:30 a.m. for travel break. The group will visit the dinosaur tracks, Rose Creek quarry, a road cut, and a road where fossils in limestone abound. Then on the Gilead for supper at the Pioneers Inn.

Wooly is planning a trip to Mt. Ida, Arkansas in early October. More details later.

Jim M. will lead a trip to Miles Ranch on the Nemaha River. Details in future P&S.

Brett would like to have a trip to Odell, Nebraska to collect Odell Diamonds. Details later.

New member Andrea K. has agreed to take over the Club Rock Pile.

NEW BUSINESS:

Camp Creek Threshers’ annual show will be July 19 and 20. Contact Brett for volunteer information. Need tumble polished stones to hand out to kids.

Sharon reminded Jayne that the Nominating Committee should be thinking of a roster for elections in November.

Jayne has offered Hidden Gems as the location for the next Rock Party, July 26 at 5:00 p.m.

GEM FEST:

Everything is ready to go for Gem Fest. As of this date,

29 vendors have signed up for booths.

Jayne clarified the budget for Gem Fest. Facebook ads will be pushed since the majority of people asked how they found out about the 2025 show answered that it was via Facebook.

Reminder that there will be a grill out following Gem Fest on Saturday.

Brett will design a “Passport” sheet to be given to kids. They will go around to designated spots at the event to get their paper stamped. A prize will be given to those who successfully achieve the goal.

SHOW

Recap of numbers for the 2025 show. Brett and Jayne will co-chair the 2026 show, per motion by Wooly and second by Vera. Motion carried. The theme has not yet been selected. We will use the post cards again this year as part of the advertising.

The meeting adjourned at 7:34 p.m. on a motion by Wooly, second by Mike. Motion carried.



Ja-zeil, Corey, and Jayne: a portion of the Beer clan hosting Gem Fest.



Brian and Jayne: Mmmm, what’s cookin’?



Kelly and Justin: riding herd in the parking area - and anywhere else that help was needed.

PRESIDENT’S MESSAGE - CONTINUED

(Continued from page 3)

more compliments on that sausage than I ever had on other types. At the close of Gem Fest, vendors and members were offered ice cold lemonade and root beer floats. The root beer floats are quickly becoming a tradition and once again were well received.

On Saturday, June 28, Wooly led a club field trip to the Fairbury area. I was unable to attend due to work, but it sounds like the trip was well attended. I look forward to hearing more about it. (See Corey’s article and pictures on page 8, and Barb’s on page 9 of this newsletter.)

July 19 and 20 is the Camp Creek Threshers show two miles east of Waverly. We need help staffing the rock display. This will be our third year. Last year we had over 1,000 people go through the building. We have had a dedicated core group of volunteers in past years that worked all day both days. We need to have more people to break the day up some. Volunteering gets you free admission to the show; there is so much to see there and it’s a shame if volunteers don’t get to walk around. The middle of July can be hot, and our first year was no exception. Last year I added four portable air conditioners to the building. With the amount of people going in and out, the building never got chilly, but it was comfortable. The big part is each air conditioner is strategically located so volunteers can stand directly in front of it if they need to cool off. I’ll have a cooler full of cold drinks for volunteers and if you work during lunch time, I’ll buy you lunch. If you are able to volunteer, please email me at quartz89@aol.com. I need to know ahead of time so that I can get you volunteer worker passes.

Don’t forget the rock party at Hidden Gems on Saturday, July 26 beginning at 5:00 p.m. The theme is Favorite Summertime Dishes. Once again we will mingle rocks, conversation, and food. Jayne says the shop will be warm, so dress accordingly.

The President’s Field Trip will once again be the Crawford Swap which officially starts Friday, August 29 and ends Monday, September 1. Most of the vendors are set up by Thursday and leave on Sunday. The Crawford club offers morning field trips to the grasslands to collect on Friday, Saturday, and Sunday. We will also organize a couple club meals and breakfasts. I will not be making breakfast every day this year. Meals are dependent on when members will be there. Please let me know your plans.

There are two private collections near Alliance that the club has been invited to view. Both are incredible. To coordinate this I need to know who is going to Crawford and when. Typically, viewing before the swap begins works best.

Hope you are having a great summer.



World Plates food vendor



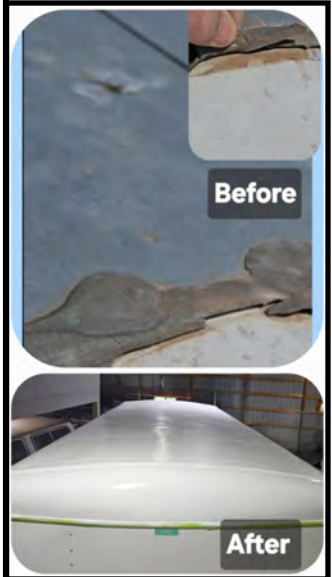
CLUB TRAILER

By Sharon M. on behalf of the Board of Directors (photos by Stiles Family)

Many, many thanks to Mike Stiles for taking on the task of repairing and resealing the roof of the club trailer.

The trailer had been vandalized or weather terrorized at the storage lot, ending with broken roof vents. The vents were removed and the openings sealed over. Then the entire roof was resealed and waterproofed.

It was a daunting task, but Mike pulled it off.



RIVER FIELD TRIP

By Jim & Sharon Marburger

Jim will be leading a field trip to the South Fork of the Big Nemaha River on August 9, 2025. We will meet at the Casey’s in Pawnee City at 10:00 a.m. The drive from Lincoln takes approximately 1½ hours, depending on traffic and road construction.

From Casey’s, we will caravan to Miles Ranch where we will collect agates, jaspers, fossils, and other materials on the river. This location is easily accessed and fairly flat.

Bring your own picnic lunch and water. Shade will be available. It will most likely be HOT, so dress accordingly and use sunscreen and bug repellent.

Please let Jim or Sharon know if you plan to attend.

james.marburger@outlook.com, 402.430.6703
lgmc.editor@outlook.com, 402.429.3323



Brett makes pancakes for breakfast Sunday morning



Donitte played with her food

FAMOUS MINERAL LOCALITIES AND EDGAR WHERRY

By Eric Fritzsch



Sometimes the best research, on a lazy Sunday afternoon, is done by accident. I was looking at some old American Mineralogist (AM) magazines and came across an article on the Black Hills called, "Famous Mineral Localities #5, The Black Hills of South Dakota". The article is more of a travel log about the logistics of getting to and around the Black Hills, plus a couple minerals described from areas the author visited. The author took stages (stagecoaches) when visiting some of the towns around the Black Hills, as automobiles, buses, and other forms of transportation weren't readily available at the time. Today a car can travel between Rapid City and Keystone in about 30 minutes, but it used to take a half day to travel by stage.

It got me wondering; if this is article is #5, what are the other localities considered famous in the late 1910s and 1920s. It took some digging but I managed to find numbers 1-4. Number 5 was the last one with a number. The locations are:

- Famous Mineral Localities #1: Keokuk Geode Region AM, 1918, V3, No. 1, p 3-5
- Famous Mineral Localities #2: Gem Region of North Carolina AM, 1918, V2, No. 3, p. 14-17
- Famous Mineral Localities #3: Amelia Court House, Virginia AM, 1918, V3, No. 3, p.27-29
- Famous Mineral Localities #4: Joplin, Missouri AM, 1918, V3, No. 4, p 36-37
- Famous Mineral Localities #5: The Black Hills of South Dakota, AM 1918, V3, No. 5, p.44-46

Several other articles in the late 1910s and early to mid 1920s were also written about other "Famous Localities", however they had no special number designation. These include:

- Beryl at Grafton, NH AM, 1919, V4, No. 3, p. 21-22
- Beryl Mountain, NH AM, 1918, V 3, No.12, p. 199-200
- Datolite at Westfield, MA AM, 19189, V 4, No.1, p.5-6
- Pelham Asbestos Mine, MA AM, 191, V 4, No.4, p. 37-39
- Chester Emery Mine, MA AM, 1919, V4, No. 6, p. 69-72
- Mt Mica, Mt Apatite, etc., ME AM, 1918, V 3, No. 9, p. 168-174
- Yuma County, AZ AM, 1919, V4, No, 12, p. 149-150
- Table Mountain, CO AM, 1925, V 10, No. 5, p.118-120
- Furnace Creek, CA AM, 1924, V9, No.1, p.8-10
- Crestmore Quarry, CA AM, 1927, V12, No. 8, p. 319.-321
- Wodgina, Australia AM, 1928, V13, No. 9, p. 457-468

Many of these articles are written by former giants in mineralogy and their names are often preserved in minerals named for them. The series stopped about the time Edgar Wherry took a job at the University of Pennsylvania to teach biology. Wherry is still remembered as an expert on Ferns and his guidebooks and work on fern taxonomy is still widely cited. He was an expert on chemistry, minerals, geology, and plants, splitting his life between these professions.



Edgar Wherry

Wherry was the first to propose that bentonite beds in the Pierre Shale (SD) were from volcanic dust after his visit to western South Dakota. He found uranium deposits in Pennsylvania. Wherry was the first to describe how soil acidity related to specific types of plant growth. He was quite the polymath in his day.

Going further down a rabbit hole, I looked up some of the plant books authored by Edgar Wherry. In "Illustrations of North American Pitcherplants", he is a co-author with Mary Vaux Walcott, whose maiden name rang a mineral bell (Vaux), as her younger brother was the famed mineralogist George Vaux, Jr, and niece of William Samson Vaux (also a well known 17th century mineralogist). Both Edgar and the Vauxes were Quakers who had a zest for the natural world. The Vauxes were also accomplished nature photographers, hikers, mountain climbers, world travelers, and naturalists. They wrote books/articles on glaciers, plants, minerals, and mines. George and Mary were Indian Commissioners. A collection of pictures from a trip to the Canadian Rockies is exhibited at www.whyte.org/post/vaux-family-glaciers.

Both Edgar Wherry and William Samson Vaux mineral collections were housed at the Academy of Natural Sciences in Philadelphia. Philadelphia was the center of mineralogy in the United States in the early 1800s. In 2007, the collections were sold/auctioned to private bidders, mostly three commercial mineral dealers. An interesting discussion about the disposition of the collections at: www.mindat.org/mesg-49058.html. Wherry's obituary in the AM is found in Volume 69 (1984), pages 580-585. The mineral species *wherryite* is named for him.

The term "Famous Mineral Localities" was likely popularized by Edgar Wherry. Through help from people on Mindat.org (Joylon Ralph in particular), a few other localities have been described as "Famous", but using the term "Famous Mineral Locality(ies)" in the title of a document or article seems to be championed by Wherry. The Mineralogical Record still uses this term in many of their modern descriptions of locations and their associated minerals.

(Continued on page 7)

FAMOUS MINERAL LOCALITIES AND EDGAR WHERRY - CONTINUED

(Continued from page 6)

Edgar Wherry was the assistant curator at the Smithsonian. He was enthralled with Keokuk geodes when he was young visiting museums in and around Philadelphia. When he had a chance to stop by and visit Keokuk, he jumped at the opportunity. He was amazed that geodes occurred in so many locations, including the soil bank behind the train station. He was able to gather up a barrel-worth and take them back to the Smithsonian which required hiring a buggy to take his collection to the train station.

Some of these famous mines in the 100+ year old American Mineralogist, like the Chester Emery Mine, are long since mined out. The mines at Chester operated for over 140 years from the mid 1800s until the end of World War II. Tens of millions of pounds of emery (corundum, ilmenite, and magnetite) were removed, yet specimens remain elusive on the market today.

Joplin, Missouri was an interesting read. Several years ago I was down in Joplin and when I asked several people in town (gas stations, restaurants, chamber of commerce) about the mines, practically no one I talked to knew of the famous mines in and around their town. The first paragraph of the article starts that “Joplin is so well known for minerals, no introduction is needed. The trip requires a couple days at least, and a trip is not likely to disappoint”. I was disappointed when I visited Joplin in the 1990s and I never did find the mines. There are several miles outside of town where I did manage to find railroad ballast that was from the mines containing “ruby jack” (sphalerite), but no sources in situ mines.

Many of these locations are in the northeastern United States. This is the area where many professional mineralogist used to live and were more likely to be visited. A trip west was a rare occasion. Many of these old mines are well

represented in old collections. There is new activity ongoing in places like Mt. Apatite, Maine.

Some western localities are also included. Table Mountain is located in Golden, Colorado and is frequently visited by Colorado School of Mines students and hikers. Simple zeolites can be found in the basalt flow which forms a mesa (or table). Collecting is still possible there today.

There weren’t commercial trains to the Red Cloud mine, and in 1925 the article on Yuma County, Arizona, the author (William Foshag of *foshagite*) describes driving to the site. The author had to stop short due to road deterioration near the mine.

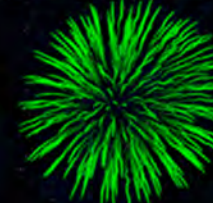
By 1927, the locality at Crestmore, California was described as being easily visited by car. The article on Wodgina, Australia is more like a modern locality paper, listing a bit of the history, geology, and identifying mineral species found in the area. It even has analysis of some minerals.

Today we don’t think anything about jumping in a car and driving to where we want to go. These old time collecting reports remind me of how remote some of these locations were in back then. Mineralogist traveled by multiple trains, stagecoaches, buggies, steamships, and walked to get to these locations. These articles are short, fun, old-timey, reads. My favorite is the Amelia Court House article (by Samuel Gordon (*gordonite*), who co-founded the American Mineralogist with Wherry).

You can read old (pre 2000) issues of American Mineralogist for free at <https://msaweb.org/MSA/AmMin/table-of-contents/>.



> SCIENCE OF FIREWORKS WEATHER AUTHORITY

 RED STRONTIUM	 ORANGE CALCIUM	 YELLOW SODIUM	 GREEN BARIUM
 BLUE COPPER	 PURPLE STRONTIUM/COPPER	 SILVER MAGNESIUM	 WHITE ALUMINUM

<https://wpde.com/weather/abc-15-weather-authority-blog/science-of-fireworks>



BE SAFE!

FAIRBURY AREA FIELD TRIP

By Corey Beer (photos by Corey)

Back in early April, the club had planned a collecting trip right before the main gem show so that the local club members and all the visiting members of the Midwest Federation could all go out together. It ended up getting such a high level of interest from the Federation members, over 30 if I remember correctly, that the local club members were asked to hold off from going on that trip; another would be held later for just club members.

On June 28, about a week after Summer Gem Fest, the second trip finally happened! We met at 8:00 a.m. at Bethany Park to discuss plans and allow for some members to carpool together. Once we all loaded up, we headed out to Fairbury, Nebraska to meet up with the second group of people who were participating in the day's events. We all circled around trip leader Wooly so he could explain the plans to the second group and to hand out the information packet on the first location we were visiting



We drove a little ways further out of Fairbury and pulled into the driveway of a very unsuspecting house. After walking a short distance up the hill next to the house, and onto a small outcropping of Dakota sandstone, you could quite clearly see a large, 3-toed (dinosaur) footprint imprinted into the rock. It was over a foot long and at least that wide. There were 22 total footprints, all in different states of preservation and completeness. I had heard of this location before, but it's a whole different thing to get to be in the field to see it in person. Also pretty amazing is that this is the only known dinosaur trackway in Nebraska!



After seeing the footprints, we went to a nearby road cut where Indian paint pots (round sandstone concretions) and fishtail selenite crystals can be found. One of the juniors found an extra large selenite plate that was probably 2½ feet across. She was very proud of her find, just as she should be!

At this point, it was about 12:30 in the afternoon and getting quite hot out so we decided it was time to go to the public park in Fairbury to eat lunch, cool down, and prepare for our next stop. Once the group had finished with lunch, we drove to the old Rose Creek clay quarry. I had been to this location many years ago but I was young enough I couldn't quite remember what it looked like. Wooly opened the gate

when we pulled in, and since my vehicle was the last to pull in, he asked me to close the gate behind us. It turned out to be quite the challenge to close so my dad, Brian, had to get out and help. I only mention this because if you're ever wondering how many beers it takes to close a gate, the answer is 2.

The inside of the old quarry was very reminiscent of being in the badlands out in western Nebraska with the highly eroded white and red cliffs. There was an abundance of interesting fossils to be found here but the one you can find the most is the fossilized ghost shrimp burrows. They were weathering out of the clay all over the place, but in certain areas you could find them sticking up vertically out of the ground in the position they originally formed, with hundreds of sections of these burrows littering the ground.



The final collecting site we visited was a freshly graded road cut that had exposed the limestone and the thousands of fossilized clam shells within it. I didn't personally collect any because I already have a bunch myself, but I know quite a few people collected great specimens for their personal collections.

We finished the day at the Pioneers Inn Restaurant in Gilead, Nebraska. They had great food and got it out to us pretty fast considering 20 of us all showed up and ordered at once. It's always a great time getting to sit and talk about our best finds at the end of a long day of collecting and it was even better seeing the whole table of juniors having a good time, too. But the most important part of the day was when we went to pay and I got their last slice of blueberry pie! Nine out of 10, would recommend!

Huge thanks to Wooly for coordinating this field trip, it was a great time as always!



For more Gem Fest photos, check out the club website.
Sharon will get the site updated in the next week.
incolngemmineralclub.org/happenings/summer-gem-fest.
See the archives at the bottom of the page.

FIELD TRIP REPORT

By Barb Engquist

On the bright, sunny morning of June 28, 2025, a caravan of vehicles headed out for adventure, a field trip in the Fairbury, Nebraska area.

The first stop of our nearly 20 person group, was to view dinosaur tracks. These tracks, discovered in 2002, were made by dinosaurs that roamed the shores of the Western Interior Seaway. The tracks are amazing, however, having no protection from weather and foot traffic, are disappearing.



Our next stop was a roadcut, where the group found ironstone concretions at the base of the cutout.



Further up the hill were nice pieces of selenite. The excitement ran high as one of our youth, Joy, found a large slab of selenite layered in rock. With many helpful hands, the large rock was dug out and carried to a nearby pickup truck. Awesome spotting Joy!



After a nice picnic lunch, the group headed to a clay pit to search for selenite crystals and ghost shrimp burrow fossils. Selenite was uncovered every time the picks moved the soil. The ghost shrimp burrow fossils were intriguing; many pieces were laying on top of the ground.



As the heat and humidity increased, we headed back to the vehicles to cool off, get a drink and head to the final roadcut.

The final location was full of limestone marine fossils. Beautiful shell fossils were everywhere, as well as a scorpion, who was upset when one of the youths disturbed his hiding place.



We ended the field trip with dinner at Pioneer Inn in Gilead. The Inn was built in 1887, out of limestone, to house and feed railroad workers. The group enjoyed good food, conversation, and relaxation before the trip home.

Thank you to all who made the field trip happen and to those who attended.



Allan & Tammy Jeanneret



Rough Rock, Slabs, Specimens, Gemstones,
Jewelry, Rock Paintings

By Appointment Only

402.873.6515 / 402.209.0747

306 O St, Union, Nebraska

tjeanneret@hughes.net

Watch for **AerieRock** online rock auctions at

jbauctions.hibid.com

AerieRock.com

AerieArtwork on etsy

AerieRock on Facebook

We buy collections and estates

[DUCT TAPE AS A DOP STICK](#)

By Jim Marburger

I am a dop stick believer when grinding and polishing cabochons. (I never mastered doing cabochons by holding the stone to the wheel with my fingers.) To me, the dop stick gives you better control of the piece being worked and polished.

For near 60 years, I have used the standard green dop wax. In the past year, I have moved to using super glue with machine screws as the dop stick. These are placed in a holder that is matched to my hand size. When I set up stones to be worked, I now can super glue many at one time; it just depends on how many machine screws I have. Buy them by the box of 100. This is a good production run of cabochons.

For clear or transparent stones, it helps to polish the back side so it reflects the light that enters the front of the cabochon. The cabochon will brighten or give added pop to the stone. Now this is where I have moved from green dop wax or super glue to the duct tape dop. By cutting a strip across the tape, folding it with the sticky side together and two short sections folded out, the sticky side of the legs can be stuck to the front of the cabochon. Now the back side can be polished by using the duct tape as the dop stick. The tape can be easily removed after the polishing is completed.

Just remember...duct tape fixes most anything.



[BENCH TIPS BY BRAD SMITH](#)

See More of my Smart Solutions for Jewelry Making Series
<http://amazon.com/dp/B0BQ8YVLTJ>

DO BEZELS SHRINK?

The engineer in me says there's no reason a bezel should shrink when I solder it onto a base plate, but I sometimes find that the stone won't quite fit into the bezel that was perfect just before soldering.

If that ever happens to you, here's a fix that usually works for those times when there's just a minor problem. I file or sand the stone down a little around its base. For soft cabs like Turquoise, Lapis, Jet, or Howelite, you can use a sanding stick. Harder cabs like jasper or agate will require a diamond file. In a pinch, a ruby nail file from the drug store will work.

There are two important things to remember when doing this. First, you can only make a minor adjustment to the stone's size. All filing or sanding has to be hidden by the bezel because it takes the polish off the stone.

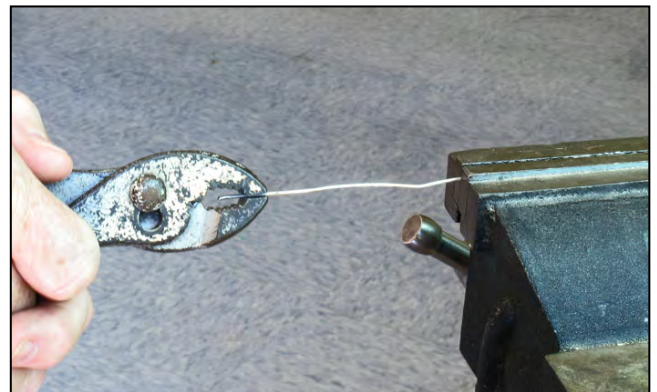
Second, remember to round off all sharp edges on the bottom of the stone. A sharp edge here might sit on a little extra solder at the bottom joint of your bezel. Any problem with the fit in this area might break the stone as you burnish the bezel down onto it.

STRAIGHTENING WIRE

Have you ever reached for your silver wire only to find that it's all bent up? The easiest way I've found to straighten it out is to stretch it a bit.

Simply put one end in the bench vise and grab the other end with a pair of serrated tip pliers. Then pull just enough to feel the wire stretch like a rubber band. This works best on smaller wire diameters, up to about 16 ga.

Be careful if you are trying to pull hard on a thick wire. Brace yourself in case the wire breaks or pulls out of the pliers.



2026 MID-WINTER SWAP COMMITTEE

Chairman:Jayne Beer
 Advanced Reservations:Sharon Marburger
 Club Booth/Rock Pile Andrea Kolodziejczyk
 Finance & Admissions: Vera Lyman, Sharon Marburger
 Floor Chairman:Jayne Beer
 Insurance Vera Lyman, Jim Marburger
 Publicity & Promotion:Jayne Beer, Jim Marburger
 Web Master:Sharon Marburger
 Youth Activities: Brett Jurgens

2026 SHOW COMMITTEE

Theme:.....
 Chairman:Jayne Beer/Brett Jurgens
 Dealers & Demonstrators: Vera Lyman
 Displays:Brett Jurgens
 Event Center Liaison Vera Lyman
 Finance/Ticket Sales:
 Floor Chairman:
 Fluorescent Booth: Clyde Ogg
 Forms..... Sharon Marburger
 LGMC Club Booth:.....
 Outside Rock Pile..... Charles Wooldridge
 Plants:Ed Ridge
 Publicity & Promotion:Jim Marburger
 Raffle.....
 Ribbons & Recognitions: Sharon Marburger
 Rock Pile/Silent Auction.....Andrea Kolodziejczyk
 Security: Vera Lyman
 Show Flyer & Printed Program Sharon Marburger
 Website..... Sharon Marburger
 Youth Activities:Brett Jurgens

2025 LONG RANGE PLANNING & BY-LAWS COMMITTEE

Jayne Beer, Chairman
 1 year: Sharon Marburger & Clyde Ogg
 2 years: Vera Lyman & Jim Marburger
 3 years: Jayne Beer & Brett Jurgens

2025 NOMINATING COMMITTEE

Jayne Beer, Chairman
 1 year: Jayne Beer & Brett Jurgens
 2 years: Charles Wooldridge & Donitte Stiles
 3 years: Vera Lyman & Ed Ridge

All articles, tidbits, and photos not individually identified as being contributed to this publication are provided by the Editor.

STANDING COMMITTEES

Audio/Visual:
 Clyde Ogg
Audit:
 Jayne Beer, James Marburger, Clyde Ogg
Christmas Party:
 Edward Ridge
Club Rock Pile:
 Andrea Kolodziejczyk
Door Prizes:
 Corey Beer, Brett Jurgens, Charles Wooldridge
Facebook:
 James Marburger, Jayne Beer, Brett Jurgens
Field Trips:
 James Marburger
Historian:
 Sharon Marburger
Membership Record:
 Edward Ridge
Mid-Winter Swap
 Jayne Beer
MWF Liaison:
 Vera Lyman
Programs:
 Clyde Ogg
Property:
 James Marburger
Recognition/Awards:
 Vera Lyman, Sharon Marburger
Refreshments:
 Vera Lyman
Show - 2025:
 Charles Wooldridge
Summer Gem Fest:
 Jayne Beer
Website:
 Sharon Marburger
Youth Activities:
 Brett Jurgens

MEMBERSHIP INFORMATION

Membership dues for the Lincoln Gem & Mineral Club are as follows:

- Adults (age 16 and over) - \$20 per year or \$30 per couple (within the same household)
- Juniors - \$3 per year (with a responsible adult)

All new memberships must be accompanied by a written application. Prospective members must gain Board approval and attend one regular meeting or club event before paying dues. Applications are available on the website:

<https://www.lincolngemmineralclub.org/about/membership>, or you may contact Treasurer Vera Lyman for a printed copy.

Mail Exchange Newsletters to:
Lincoln Gem & Mineral Club, Inc.
P.O. Box 5342
Lincoln, NE 68505-0342



Or e-mail newsletters to:
lgmc.editor@outlook.com

A color version of the Pick & Shovel is available at:
<http://www.lincolngemmineralclub.org/index.php/newsletters/current>

PICK & SHOVEL

Hidden Gems by The Jewelry Connection Ltd.

Indian Village Shopping Ctr.

3227 S. 13th St., Lincoln (next to LAUNDROMAT)

Corey Beer - Lapidary
402.890.9155

Jayne Beer - Jeweler
402.890.3307

2025 Schedule

Lapidary Classes

(Stone Cutting)

\$100 for 5 3-hour classes

Sundays 1:00 p.m. - 4:00 p.m.

Choice of session:

- Session 1: Jan 26 - Mar 2
- Session 2: Mar 9 - April 20
- Session 3: Apr 27 - Jun 1
- Session 4: Jun 29 - Aug 3
- Session 5: Aug 10 - Sep 14
- Session 6: Sep 21 - Oct 26
- Session 7: Nov 2 - Dec 7

Silversmithing Classes

Tuition: \$160 plus \$30 supply deposit

Choice of Tuesday or Wednesday

7:00 p.m. - 10:00 p.m.

Tuesdays

- Session 1: Jan 21 - Feb 18
- Session 2: Feb 25 - Apr 15
- Session 3: Apr 22 - Jun 10
- Session 4: Jun 24 - Aug 12
- Session 5: Aug 19 - Oct 7
- Session 6: Oct 14 - Dec 2

Wednesdays

- Session 1: Jan 22 - Feb 19
- Session 2: Feb 26 - Apr 16
- Session 3: Apr 23 - Jun 11
- Session 4: Jun 25 - Aug 13
- Session 5: Aug 20 - Oct 8
- Session 6: Oct 15 - Dec 3

Contact: Jayne Beer 402-890-3307 or look up "Hidden Gems by The Jewelry Connection LTD" in Facebook and send message