



# THE PICK & SHOVEL

In association with



The Midwest Federation of Mineralogical and Geological Societies



The American Federation of Mineralogical Societies

The purpose of this corporation shall be to study, promote an interest in, and disseminate knowledge of lapidary and various Earth Sciences including but not necessarily limited to Geology, Paleontology and Mineralogy. It shall be a particular purpose of the corporation to provide education in these fields to its members and the general public, especially to youth and student groups.

Current club by-laws can be found at [www.lincolngemmineralclub.org/About/General Information](http://www.lincolngemmineralclub.org/About/General%20Information).

## GENERAL MEETINGS

Third Thursday of the Month, except for January (3rd Sunday), December (1st Sunday), and summer break (June, July, August).

**Meeting Times:** Juniors meet at 6:15 p.m.  
Adults meet at 7:00 p.m.

**Next meeting:** **March 20, 2025**  
**Program:** Ice Age Megafauna by Shane Tucker

## BOARD MEETINGS

Until further notice, Board Meetings will be held at 6:30 p.m. on the first Thursday of each month.

**Next Board Meeting:**  
**Thursday, March 27, 2025 at 6:30 p.m.**  
**Vera Lyman's Residence**

Persons of general membership are invited to attend Board meetings and offer agenda items.



Graphic borrowed from <https://dhhs.ne.gov/Pages/Coronavirus.aspx>

## 2025 BOARD OF DIRECTORS

**President:** Brett Jurgens, 402.850.3256, quartz89@aol.com

**1<sup>st</sup> Vice-President:** Jayne Beer, 402.890.3307, JBeer60070@aol.com

**2<sup>nd</sup> Vice-President:** Clyde Ogg, 402.326.8682, clydeogg55@gmail.com

**Treasurer:** Vera Lyman, 402.464.6089

**Secretary:** Sharon Marburger, 402.429.3323, lgmc.editor@outlook.com

**Board Member:** Corey Beer, 402.466.6628

**Board Member:** Jeff Kubitz, 402.540.9395, jkubitz@neb.rr.com

**Board Member:** Mike Stiles, 402.890.1760, mcstiles72@outlook.com

**Board Member:** Charles Wooldridge, 402.975.0416, charles.wooldridgeii@gmail.com

## 2025 LONG RANGE PLANNING & BY-LAWS COMMITTEE

Jayne Beer, Chairman

1 year: Sharon Marburger & Clyde Ogg

2 years: Vera Lyman & Jim Marburger

3 years: Jayne Beer & Brett Jurgens

## 2025 NOMINATING COMMITTEE

Jayne Beer, Chairman

1 year: Jayne Beer & Brett Jurgens

2 years: Charles Wooldridge & Donitte Stiles

3 years: Vera Lyman & Ed Ridge

# ANNOUNCEMENTS & CLUB FUN

## DATES TO REMEMBER

- March 15, 2025 - Rock Party at the Marburgers'
- March 20, 2025 - General Meeting
- April 3, 2025 - Field trip to Fairbury area
- April 4, 2025 - Show setup (all day) and Meet & Greet (5:30 p.m.)
- April 5 & 6, 2025 - Annual Show & Midwest Federation Convention; Banquet
- April 17, 2025 - General Meeting
- May 15, 2025 - General Meeting
- June 21 & 22, 2025 - Summer Gem Fest

## PROGRAM FOR MARCH

### Ice Age Megafauna by Shane Tucker

Shane Tucker earned his B.S. and M.S. degrees at the University of Nebraska-Lincoln. He has served as the Highway Paleontologist and Coordinator for the Nebraska Highway Paleontology Program since 2007. Before that, he had been the Preparator and had an internship for the same program. As an undergraduate, he spent two years working as a curatorial assistant in the Division of Vertebrate Paleontology at the University of Nebraska State Museum (UNSM) and two seasons as a summer intern at Ashfall Fossil Beds.

Shane works closely with the public as well as state and federal agencies to collect reported discoveries and curate them into the UNSM vertebrate paleontology collection.

## **FIELD TRIP**

The North Central Kansas Rock and Gem Club has an Oklahoma field trip planned for April 26 & 27. LGMC members are invited to attend.

- April 26 Boley agates - probably be road hunts
- April 27 Barite formation on a farm

Hotels would be in Shawnee, OK or Ada, OK (southeast of Oklahoma City)

Time and meeting place instructions next month



**Saturday, March 15  
5:00 p.m.**

**Sharon will prepare beef stew and a birthday cake for Jim!  
Bring your sides and your projects!  
Lapidary equipment available to use.  
We will be preparing table favors for the MWF Banquet.  
Come celebrate Jim's birthday!**

## MARCH BIRTHDAYS

- Patrick Carey**
- Martin Dougherty**
- Bob Gritit**
- Jim Marburger**
- Greg Syslo**
- Ja-zeil T.**



## PICK & SHOVEL STAFF

- PUBLISHER:**  
Lincoln Gem & Mineral Club, Inc.  
P.O. Box 5342  
Lincoln, Nebraska 68505
- EDITOR:**  
Sharon Marburger  
E-mail: lgmc.editor@outlook.com
- CIRCULATION:**  
Vera Lyman and Donitte Stiles;  
402.464.6089  
Sharon Marburger;  
402.429.3323
- DEADLINE:**  
Last Sunday of the month.

Follow us on Facebook:

<https://www.facebook.com/groups/223555904325876>



PRESIDENT'S MESSAGE

By Brett Jurgens, President

Hello LGMC.

It is officially CRUNCH time. By the time this is sent out, our annual show will be less than one month away! The show is the result of months of planning, but it cannot happen without the culmination of volunteer help from our members.

At our meeting in February, I had volunteer sign up sheets for different areas and times during the show. We had some members sign up, but we are still in need of volunteers to make the show successful. Areas needing volunteers during the show include the admission gate, club info booth, rock pile (Saturday only), fluorescent display, and Juniors area. We also need help with show set up and tear down. We will need extra help with these due to the extra display cases this year.

Set up begins at 8:00 a.m. on Friday the 4th. It helps to know in advance if you are able to help. This year I am assigning teams to specific tasks so that we are able to get display cases set up as quickly as possible. Several dealers are bringing displays and we need to let them set those up as early as possible (before setting up their booths).

Tear down will begin immediately after the end of the show at 4:00 p.m. on Sunday the 6th. Again, the more help we have, the quicker and smoother it goes.

I am glad to hear we had a decent number of members sign up to attend the meet and greet on Friday and banquet on Saturday. Sharon has spent a great deal of time organizing this and I want to thank her for the work. We still have some display space available so if you have not signed up and would like to display, please let me know.

The juniors are in need of tumbled material for the show and we are always looking for donations of material to sell at our club rock pile. We are also in need of rough Nebraska material for our free outdoor rock dig at the show. This has been named a "field trip" for our Midwest Federation friends on Friday afternoon. Please bring your donations to the Event Center Friday morning so they can be mixed in with the two loads of gravel we've lined up.

There is a rock party at the Marburgers' on Saturday, March 15th at 5:00 p.m. This is before our March meeting so please don't forget.

Our next regular meeting is Thursday, March 20th. Shane Tucker is giving the program and I am sure it will be one not to miss. Hope to see you at the show (and meeting) (and rock party)!

ADVERTISING INFORMATION

Advertising by rock / hobby business or interest is permitted with the approval of the Board of Directors. Contact the Editor with your proposed ad. The rate is set at \$20.00 per full page; \$10.00 per 1/2 page; \$5.00 per 1/4 page (minimum) per issue, paid in advance to the Club treasurer. Ads will be placed throughout the newsletter as space permits.

JUNIORS

by Brett Jurgens, Junior Leader

Hello Juniors.

I took a display case and limb casts to our last meeting and asked our junior members to work together to arrange a display. I love how creative our kids are. They arranged the limbs into the shape of two trees; something I would never have thought to do. It just shows how minds can work so differently.

Our show is less than a month away! At our last meeting, I started a sign up sheet to help staff our juniors booth at the show. We will need help on both Saturday and Sunday. We will have the sign up sheet again at our meeting on March 20th, with spots available for both junior members and parents. Please try to attend the meeting as we will be making plans for operation of the junior booth. If we have enough help, I would like to have other junior activities set up for the show, such as our beloved rock race. I will have a treasure chest at the show with a variety of rocks and specimens for juniors to pick from, based on how much they volunteer at the show. We will also have some different tumblers on display to demonstrate the different methods of tumbling..

There are a couple of juniors signed up to display at the show. I still have some cases available if others would like to display. Remember that setting up a case at the show helps earn your showmanship badge.

Shane Tucker is giving the program on Ice Age Megafauna after the general meeting. Try to stick around for that as I'm sure it will be great.

Our March rock party is at the Marburgers' home in on Saturday, March 15th at 5:00 p.m. See page 2. I will have a special prize for junior members who attend the rock party.



Please send your hobby-related photos with captions or explanations for publication in the Pick & Shovel. Field trips, lapidary projects, fossil projects, metal projects, wire wrapping, tumbling, or any other activity of interest to the club. Your project may inspire someone else. Send via email ([lgmc.editor@outlook.com](mailto:lgmc.editor@outlook.com)) or via Facebook Messenger to Sharon Marburger (<https://www.facebook.com/mamamar7880>).

**FAVORITE MICHIGAN COLLECTING SPOTS: LAKE SUPERIOR**

Clyde and Barb Ogg (photos included)

Last month we shared our favorite collecting beaches on Lake Michigan. In this article, we will discuss locations on the Lake Superior shore of Michigan’s Upper Peninsula (“UP”).

The underlying bedrock of Michigan is mostly hidden under hundreds of feet of sand and gravel deposited by past glaciation. But in the Western UP, a considerable amount of bedrock is visible and ancient rocks predominate. They include basalt, rhyolite, jasper, jaspilite, epidote, prehnite, chrysocolla, thomsonite, datolite, quartz (and amethyst), granite, gneiss, schist, and Jacobsville Sandstone. Copper can also be found.

Some interesting rocks and formations in the UP include:

- **Copper and iron ore in the Keweenaw Peninsula.** Copper was mined by indigenous people at least 8000 years ago and by American mining companies in the 19<sup>th</sup> century. Even though these copper mines are no longer productive, there is a rich history of copper mining in the Keweenaw Peninsula.

A metal detector may also help you find native copper and rarely, silver ore on beaches or in the tailings of old copper mines. Most of these abandoned mines are privately owned and permission must be granted to collect there. Copper replacement agates in basalt are an especially prized find.

- **Isle Royale Greenstone.** This green gemstone (chlorastrolite) is Michigan’s state gem. It is rare to find them, but you could get lucky. They occur in basalt nodules in the Keweenaw Peninsula. Greenstone is also found on Isle Royale, but you cannot collect them there because it is a National Park.

- **Jasper Knob in Ishpeming.** Within the city of Ishpeming, this huge, bald-top hill is composed entirely of jasper and hematite (Jaspilite). There is no collecting allowed at this site, but it is a truly unique place and a must-see if you are anywhere near this part of Michigan. See one of us if you want a detailed map of this area.

- **Yooperlites®.** In the Eastern UP, one rock that was transported with glaciers from Canada is syenite. Local rockhounds have known about syenite in this area for a long time, but in 2017, Erik Rintamaki patented the name, Yooperlites® for syenite, rich with fluorescent sodalite. In normal light, syenite looks like grayish granite, but there’s a twist. Yooperlites®, rich with fluorescent sodalite, glows a vibrant orange or yellow under ultraviolet light.

Because Yooperlites® resulted from glacial deposition, this rock can be found in many places along the eastern UP, but the greatest concentration is around and east of Grand Marais. To find them, use a longwave UV flashlight after sundown and scan the beach from water edge to well up the shore. Good Yooperlites® will show up as bright orange.

We will start with beaches near the western Michigan state boundary; then locations on the Keweenaw Peninsula (our favorite part of the state!); and finally, work our way east along the shore of Lake Superior. While in these areas don’t miss the many other great destinations. Porcupine Mountains, old mining site tours on Keweenaw Peninsula and Copper Harbor. As you drive east, visit Picture Rocks National Lakeshore, Jasper Knob (in the town of



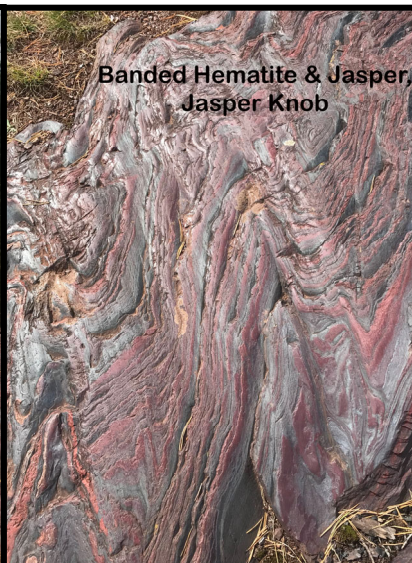
**Quincy Mine**



**Entrance to Quincy Mine**



**Jasper Knob**



**Banded Hematite & Jasper, Jasper Knob**

Ishpeming), many excellent lighthouses, hiking trails, and loads of rocky beaches. As with the rest of the state, there are beautiful lakes for boating, swimming, and fishing!

**MICHIGAN COLLECTING SPOTS: LAKE MICHIGAN BEACHES - CONTINUED***(Continued from page 4)***Little Girls Point County Park – Gogebic County**

Open dawn to dusk daily

Plenty of free parking

E1930 Lake Road, Ironwood, MI 49938

This is a good spot for Lake Superior Agates.

About 30 camping sites are available, picnic areas, restrooms, hiking trails, playground, swimming, but no fresh water. A tank of potable water is available for campers to fill their tanks.

The Porcupine Mountains are visible to the West and great sunsets are common during camping season.

**Calumet Waterworks Park – Houghton County**

Open dawn to dusk daily, no fee

Lakeshore Drive; Calumet, MI 49913

Open dawn to dusk daily

Calumet Park is a nice stop that has a short hiking trail, basketball courts, a playground, toilets, and picnic areas available. It is a good spot for Lake Superior Agates, epidote, prehnite, banded rhyolite, and some copper. Most beach rocks are dark-red colored, probably rhyolite. **Highly Recommended!**

**Gratiot River County Park – Gratiot County**

Open dawn to dusk daily, no fee

Gratiot River Shortcut Road, Allouez, MI 49805

To get here from Ahmeek, take Wright Street to 5-mile Point Road, then turn right. Follow around the curves and you will see a Cemetery on the right and a dirt road to the left. Turn left on that road and take it until you see an area with several roads that cross. Stay to the right and take that all the way to the end, where the park is along the shoreline.

Gratiot is a large park of more than 200 acres, with about 8,500 feet of Lake Superior shoreline, plus ½ mile of the Gratiot River. There are public restrooms, picnic tables, and dogs are allowed. They ask that you remove everything that you carry in, don't leave garbage behind (bears!).

This is a good spot for Lake Superior Agates, rhyolite, jaspers, and other rocks that will be great for tumbling. As with other beaches on Kewanee, most rocks are red-colored rhyolite or basalt. **Highly Recommended!**

**Wolverine Number 2 Shaft Mine Tailings – Houghton County**

Open dawn to dusk daily

Calumet Township, Houghton County, Wolverine, Michigan; 47° 16' 5" North, 88° 24' 42" West.

This is a good spot for native copper, greenstone, copper-replaced agates, epidote, datolite, hematite, and prehnite.

**Muskallonge State Park and Mouth of Two Hearted River – Luce County**

Open dawn to dusk daily

You will need a Michigan State Park Pass to enter the park, plenty of free parking

29881 County Road 407, Newberry, MI 49868

Muskallonge is situated between the shores of Lake Superior and Muskallonge Lake. The park has around 160 spots in a modern campground, excellent hiking trails, and beautiful rocky/sandy beaches. There are about 70 lakes and 5 rivers within a 20-mile radius of the park. You are also near Grand Marais where, among other things, charter fishing is available, and if you time your visit right there is an excellent Rock and Mineral Show about the first week after Labor Day. To the West of Grand Marais is Pictured Rocks National Lakeshore that is well worth a visit.

Once on the beach, you can travel as far as you wish. Michigan law allows you to access Great Lake beaches from parks and other access points. The mouth of Two Hearted River empties into Superior east of the main Muskallonge Park entry point and is a good place to check out, and possibly work your way up stream a way.

This is a good spot for Lake Superior Agates, Yooperlites®, jasper, jaspilite, quartz, magnetite, epidote, unakite, and tumbling rocks galore! This area is sometimes worked for flour gold. Flour gold is tiny pieces of gold that are extracted from the black sand layer using sluicing or panning methods.

**Whitefish Point – Chippewa County**

Open dawn to dusk daily, no fee

18335 N. Whitefish Point Road, Paradise, MI 49768

White Fish Point is known for its beautiful Lake Superior shoreline, the Whitefish Point Lighthouse, Great Lakes Shipwreck Museum, and as a prime birding area. From here you are only about 30 minutes from Tahquamenon Falls State Park, one of the largest falls east of the Mississippi River.

*(Continued on page 6)*

## FEBRUARY BOARD MEETING MINUTES

January 30, 2025 at Vera Lyman's residence  
by Sharon Marburger, 2025 Secretary

### Roll Call

|                 |                    |         |
|-----------------|--------------------|---------|
| President:      | Brett Jurgens      | Present |
| 1st Vice Pres.: | Jayne Beer         | Present |
| 2nd Vice Pres.: | Clyde Ogg          | Present |
| Treasurer:      | Vera Lyman         | Present |
| Secretary:      | Sharon Marburger   | Present |
| Board:          | Charles Wooldridge | Present |
|                 | Mike Stiles        | Present |
|                 | Jeff Kubitz        | Present |
|                 | Corey Beer         | Present |

Visitors: Ed Ridge, Jim Marburger, and Donitte Stiles.

President Brett Jurgens called the meeting to order at 6:43 p.m.

The minutes of the December meeting were distributed. Wooly moved, and Jeff seconded to accept the minutes as printed. Motion carried. There were no minutes for January because there was no meeting due to multiple illnesses.

The Treasurer's Reports were distributed and discussed. Wooly moved, with a second by Mike, to accept the December Treasurer's Report. Motion carried. Clyde moved, with a second by Jeff, to accept the January report. Motion carried.

### OLD BUSINESS:

Nothing has yet been done on getting information for purchasing new t-shirts.

Updating the electrical and plumbing in the lapidary room at Hidden Gems was tabled until after Gem Fest.

Clyde reported no update on students for the MWF/AFMS scholarship to be handed out at the Convention in April. The University committee was meeting at the end of January and the conclusion had not yet been reported to Clyde.

Sharon will draft an updated contract between LGMC and The Jewelry Connection/Hidden Gems. Changes were discussed and the revisions will be sent to Jayne for her approval.

The Omaha club's field trip to Haunted Ridge, Missouri has not been confirmed. The coordinator has a serious health issue that may prevent the trip from happening.

### NEW BUSINESS:

Sharon presented a proposal and drawing for building a rolling shelving unit for the Silent Auction/Rock Pile inventory. Storing, loading, and unloading the inventory is space and time consuming. The use of a mobile storage solution will ease wear and tear on bins and bodies. Unless there is a big increase in lumber prices, she estimates supplies for the project will cost about \$165. Vera moved to approve the project, second by Jayne. Motion carried. The storage unit will be the property of LGMC.

### SWAP BUSINESS:

The Mid-Winter Swap was a success. It was decided to include a food truck for the 2026 Swap.

### SHOW BUSINESS:

Vera and Wooly provided a Show budget. A long discussion ensued. Wooly was concerned that hosting the Midwest Federation Convention was going to put a huge dent in our finances. Sharon pointed out that the banquet money would be recouped by ticket sales to that event. It was determined to offset any deficiencies, we should cut advertising costs. Jim has already purchased Show postcards, and arranged for ads in the Thrifty Nickel and Buy Nebraska. Paid ads on Channel 8 will be dropped this year, and intensify the focus on advertising on social media. Wooly moved, and Clyde seconded, to approve the Show budget with added specifics of \$750 for paper advertising, \$600 for social media advertising, and \$150 for yard signs. Motion carried. Later in the meeting, it was determined that a total of 40 yard signs should be ordered: 20 of each of the two designs. No action was taken to increase the budgeted amount, but all Board members appeared to be in agreement.

Wooly will contact Yankee Hill Landscaping to arrange for two loads of washed river gravel for the Nebraska Rock Pile.

Sharon will contact Hy-Vee and the Event Center to determine final date to order food for the convention.

Brett reported that Omaha will loan us 10 display cases. Also, the juniors need specimens and tumbled stones.

At this time, 12 display cases have been reserved. Other spaces have been claimed, with people bringing their own cases or requesting space for hands-on displays.

Clyde said that he and Barb plan to put together a "Downing Display" with club information.

The meeting adjourned at 9:04 p.m. on a motion by Corey, second by Jeff.

### MICHIGAN COLLECTING SPOTS - CONTINUED

*(Continued from page 5)*

Rock collecting is not allowed on the Seney National Wildlife Refuge property at Whitefish Point; however, you can access the beach at the lighthouse and travel West until you are outside the refuse boundaries. This area is a good spot for Yooperlites®, jasper, jaspilite, quartz, magnetite, and other beautiful water tumbled rocks.

We'll detail our favorite collecting locations on Lake Huron in the next Pick & Shovel. Stay tuned for part four!

**FEBRUARY GENERAL MEETING**

February 20, 2025 at Bethany Park Shelter House  
By James Marburger, Substitute Secretary

The meeting was called to order at 7:13 p.m. There were 26 adult members, four junior members, and five visitors.

Minutes of the last meeting were printed in the Pick & Shovel. Sheryl Olson moved to accept the minutes as printed, second by Donitte Stiles. Motion carried.

No Treasurer's Report was presented.

**Old Business:**

The March Rock Party will be held on March 15th at 5:00 p.m. at the Marburgers'. We will work on the banquet table favors during the party.

Show postcards are available to pick up and distribute. They are on the table. Take as many as you think you can put in public locations.

**New Business:**

None.

**Show Business:**

Wooly moved any junior wishing to attend the MWF Awards Banquet with their parent, that the price of the meal to be paid out of the Juniors' account. Second by Sarah Nichols. Motion carried.

The Nebraska Gem Dig will be delivered by noon on Friday, April 4. Please bring your Nebraska collected materials to salt the pile.

Clyde Ogg spoke about the two \$4,000 scholarships from the American Federation to be given to Megan Heins, a Ph.D. student and Kali Neydon, a Masters student.

**General:**

Members whose dues had been paid by the time of the meeting were made eligible for a special incentive drawing.

- Gold rutile pendant set in sterling silver, donated by Tim & Marites Aulner: won by Phil Geib
- Two long wave UV flashlights: won by Ellie Lyman and Blake Marlar
- \$25 gift certificate to Hidden Gems: won by Allan Gossman
- Junior drawing: One long wave UV flashlight won by Mille Geib

Clyde Ogg moved to adjourn the meeting to program, second by Mike Stiles. Carried.

Jim MacNabb presented a program on Identifying Gemstones.

**COLLECTING MINERALS AS PLAY**

Eric Fritzsich

My wife often describes what I do when I go downstairs to my mineral collection as "playing with rocks." And while this first might sound detrimental, it is actually a compliment.

Many studies have been shown that play is incredibly important to the development of children, but it also has a profound effect on adults. Dr. Stuart Brown of the National Institute of Play defines eight play styles: directors, competitors, jokers, storytellers, explorers, kinesthetes, creators, and collectors. Yes, collecting is a form of play.

Collectors find accumulating rare or fascinating things as a form of play. It isn't like the scene in the TV show *Friends*, where the character/paleontologist Ross mock plays with plastic dinosaurs fighting at work. But the feel, joy, curiosity, and wonder of handling our collections brings joy and fulfillment.

When we play, we exercise our limbic system in our brain, responsible for behavioral and emotional responses. The brain stem even creates new connections providing nourishment to our most important organ. Many studies have shown that people who participate in any of the forms of play live longer and happier lives. In the opening credits of the TV show *Laverne and Shirley*, when Laverne puts that glove on a bottle of beer passing through the assembly line, that is a form of play (joker-always fooling around with a big bold personality).

A recent report in the journal "Frontiers in Psychology" (Schen & Crawley, 2025, issue 10 Feb) finds that adults who are highly playful have a more positive outlook on the future and are more resilient when faced with challenges. They studied 500 people during COVID and found that play equated with stronger coping mechanisms, a rosy outlook on the future, all while having a positive experience playing. Less playful individuals had more difficulty with the fears, loneliness, and vulnerabilities.

As one continues to play and engage in one's hobby, we gain confidence and it can encourage us to take and create risk in other parts of our lives such as finding solutions at work, being more friendly, changing our wardrobe, etc.

One of the problems with adult play over child play is that adults often want perfection. If they can't build a table perfectly, why try? If they can't win a tennis tournament, then what's the point? Adults often miss the mark that people who can build beautiful tables have practiced (also known as play) on many other tables before being able to perfect their skill. Tennis players need to take lessons, repeat shots over and over. Adults miss the point that the play is what is important, not the results.

Another downside to adult play is schedule. Adults have such busy lives. We often must build in time for play. My wife likes to sleep in on the weekends; I don't. So, I know that when I wake up at 4:00 a.m., I often have four hours to play with my "rocks." Schedule some playtime with your hobbies. If you can devote 5-10 hours a week (which is a lot in an adult schedule) to your hobby, you'll find the rest of the week goes a lot better.

All articles, tidbits, and photos not individually identified as being contributed to this publication are provided by the Editor.

## SHOW PREP

Sign up with Brett to volunteer:

- Setup on Friday. This specifically includes putting covers on tables and assembling display cases. There is lots to do on setup day; let Brett know you are available to help.
- Help Vera and Jim Atkins at the door (AKA admissions gate). This includes taking money, operating the Square terminal, stamping hands, directing visitors to Gene Mulinix to participate in the Dealer Gift Certificate raffle. Volunteers are also needed to sell raffle tickets for the Native American carving.
- Work the Club Booth, answering questions about the club, providing Membership Applications to those interested in joining the club, offering club information brochures, directing people to examine the display of club activities and articles. Many other things are involved. Just jump right in!
- Help Jeff Kubitz with the Club Rock Pile (previously Silent Auction) on Saturday only. This entails making sure there are specimens/items laid out on the tables with description sheets.
- Help Clyde and Kathy with the Fluorescent Display.
- Work the Juniors' area. This includes the Gem Dig, rock spinner, tumbler table, and the rock race.
- Tear down on Sunday, beginning at 4:00 p.m. We will need help with the extra number of cases this year. See Kelly Beer for direction on display cases.
- Bring your extra (preferably) Nebraska material to donate to the MWF's Silent Auction on Sunday. All sizes welcome.
- Donate some Nebraska material to the outside Nebraska Rock Pile. Donations to be delivered to the Event Center Friday

morning. This is an official field trip for the Convention, so we want to have lots of material.

- Prepare your display (and cases if you are using your own).
- Get ready to have FUN!



## UNCLE BRETT NEEDS YOU!

### NYKKY'S CLASS

By Jayne Beer

On Thursday, February 27, 2025, we had a great wire wrap class here at Hidden Gems by The Jewelry Connection. We had 12 students who enjoyed the class and went home with a finished Labradorite eyeball pendant. We had many folks who have been in Nykky's classes before and a few first time students. Nykky is wonderful at getting everyone through their project whether they need a little help or a lot. I have gotten to the point where I really enjoy doing the weaving part. I still struggle with some assembly aspects.

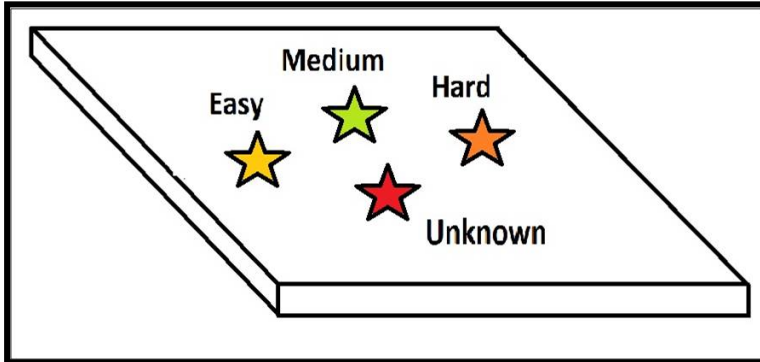
There will not be a public class in March. Nykky will be teaching at a private birthday party at Hidden Gems. Then Nykky will be off on an adventure to a ren fair. We will be going to the Kansas City show in March as well; of course we will be looking for great stones for the next class which will probably be in April. Check our booths for information when you see us at the annual gem show on April 5th and 6th at the Event Center.



**BENCH TIPS BY BRAD****Identifying Unmarked Solders**

There are plenty of ways to mark your sheet or wire solders, but suppose you forgot to mark them and have a couple that you can't identify. The answer is to compare the melting temperature of the unknowns with that of a known solder.

What I do is take a thick scrap of copper or nickel and arrange several solders on it. Ideally, I would have a sample of easy, medium and hard known solders surrounding the unknown piece. Then I heat the plate from the bottom and watch the order in which the solders melt.



See More of my Smart Solutions for Jewelry Making Series

<http://amazon.com/dp/B0BQ8YVLTJ>

**Attention Members!**

Please let Editor Sharon know your birth month so your special day can be acknowledged in the newsletter. You may send it in an email ([lgmc.editor@outlook.com](mailto:lgmc.editor@outlook.com)), text (402.429.3323), or let me know at any meeting.

**Emery Boards**

I feel the key to getting a lustrous polish on your jewelry work is having a good selection of sandpaper handy for prepolishing before going to the buffer. I generally start around 400 grit and then go to 800 and 1200.

While some projects do require sheets of sandpaper, my favorite way of sanding small jewelry items is to use emery boards for doing your nails. I like the ones with a thin foam core. They have enough resistance to sand the high points off a flat surface and yet give a little when you're trying to smooth off a curved surface.

These nail boards are inexpensive and come in a variety of grits. Some grits are so fine they give an almost finished surface. Pick up a few at a beauty supply company, at your local drug store, or from Amazon.

**Allan & Tammy Jeanneret**

Rough Rock, Slabs, Specimens, Gemstones,  
Jewelry, Rock Paintings

**By Appointment Only**

402.873.6515 / 402.209.0747

306 O St, Union, Nebraska  
[tjeanneret@hughes.net](mailto:tjeanneret@hughes.net)

Watch for **AerieRock** online rock auctions at  
[jbauctions.hibid.com](http://jbauctions.hibid.com)

[AerieRock.com](http://AerieRock.com)

AerieArtwork on etsy

AerieRock on Facebook

We buy collections and estates

# Lincoln Gem & Mineral Club's 65th Annual Show

in conjunction with the Midwest Federation of Mineralogical and Geological Societies' Annual Convention

## PETRIFIED WOODS OF AMERICA

**April 5 & 6, 2025**

**Sandhills Global Event Center**

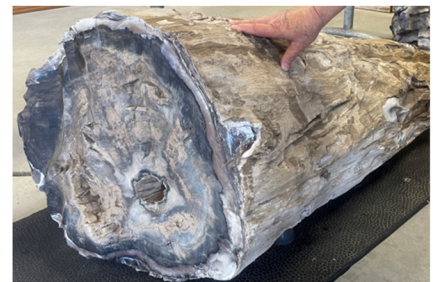
**Ag Society Hall**

**84th & Havelock**

**Lincoln, Nebraska**

**Saturday, 9 a.m. to 5 p.m.**

**Sunday, 10 a.m. to 4 p.m.**



## FUN FOR THE WHOLE FAMILY



**\$1 off paid admission  
with a can donation to  
the Food Bank!**

**Admission:**

**\$8 per adult**

**\$15 2-day pass**

**Children 11 and under**

**free with paid adult**

**Youth Booth**

**Dealers**

**Exhibits**

**Demonstrators**

**Nebraska Gem Dig (outside)**

**Fluorescent Display**

**Mineral Identification**

<http://www.lincolngemmineralclub.org>

**2026 MID-WINTER SWAP COMMITTEE**

Chairman:.....  
 Advanced Reservations:..... Sharon Marburger  
 Club Booth/Rock Pile .....  
 Finance & Admissions: ..... Vera Lyman, Sharon Marburger  
 Floor Chairman: .....  
 Insurance ..... Vera Lyman, Jim Marburger  
 Publicity & Promotion: ..... Jayne Beer, Jim Marburger  
 Web Master: ..... Sharon Marburger  
 Youth Activities: ..... Brett Jurgens

**2025 SHOW COMMITTEE**

**Theme: ..... Petrified Woods of America**  
 Chairman:..... Charles Wooldridge  
 Dealers & Demonstrators:..... Vera Lyman  
 Displays: ..... Brett Jurgens  
 Event Center Liaison..... Vera Lyman  
 Finance/Ticket Sales: ..... Jim Atkins, Vera Lyman  
 Floor Chairman: ..... Clyde Ogg  
 Fluorescent Booth: ..... Clyde Ogg  
 Forms ..... Sharon Marburger  
 LGMC Club Booth: ..... Charles Wooldridge  
 MWF Convention ..... Sharon Marburger  
 Outside Rock Pile..... Charles Wooldridge  
 Plants:..... Ed Ridge  
 Publicity & Promotion: ..... Jim Marburger  
 Raffle..... Gene Mulnix  
 Ribbons & Recognitions: ..... Sharon Marburger  
 Security: ..... Vera Lyman  
 Show Flyer & Printed Program..... Sharon Marburger  
 Youth Activities: ..... Brett Jurgens

**2025 MWF CONVENTION PLANNING COMMITTEE**

Chairman:..... Sharon Marburger  
 Area Hotels..... Donitte Stiles  
 Area Restaurants ..... Brett Jurgens  
 Banquet ..... Sharon Marburger/Vera Lyman  
 Competitive Displays ..... Brett Jurgens  
 Field Trips ..... Charles Wooldridge/James Marburger  
 Finance: ..... Vera Lyman  
 Forms: ..... Sharon Marburger  
 Ground Transportation ..... Sharon Marburger  
 Host Hotel ..... Sharon Marburger  
 Meeting Rooms ..... Sharon Marburger  
 Publicity & Promotion: ..... Jim Marburger  
 Web Master: ..... Sharon Marburger

**STANDING COMMITTEES**

**Audio/Visual:**  
 Clyde Ogg  
**Audit:**  
 Jayne Beer, James Marburger, Clyde Ogg  
**Christmas Party:**  
 Edward Ridge  
**Door Prizes:**  
 Corey Beer, Brett Jurgens, Charles Wooldridge  
**Facebook:**  
 James Marburger, Jayne Beer, Brett Jurgens  
**Field Trips:**  
 James Marburger  
**Historian:**  
 Sharon Marburger  
**Membership Record:**  
 Edward Ridge  
**Mid-Winter Swap**  
 Jayne Beer  
**MWF Liaison:**  
 Vera Lyman  
**Programs:**  
 Clyde Ogg  
**Property:**  
 James Marburger  
**Recognition/Awards:**  
 Vera Lyman, Sharon Marburger  
**Refreshments:**  
 Vera Lyman  
**Show - 2025:**  
 Charles Wooldridge  
**Summer Gem Fest:**  
 Jayne Beer  
**Website:**  
 Sharon Marburger  
**Youth Activities:**  
 Brett Jurgens

**MEMBERSHIP INFORMATION**

Membership dues for the Lincoln Gem & Mineral Club are as follows:

- Adults (age 16 and over) - \$20 per year or \$30 per couple (within the same household)
  - Juniors - \$3 per year (with a responsible adult)
- All new memberships must be accompanied by a written application. Prospective members must gain Board approval and attend one regular meeting or club event before paying dues. Applications are available on the website:  
<https://www.lincolngemmineralclub.org/about/membership>, or you may contact Treasurer Vera Lyman for a printed copy.

Mail Exchange Newsletters to:  
Lincoln Gem & Mineral Club, Inc.  
P.O. Box 5342  
Lincoln, NE 68505-0342



Or e-mail newsletters to:  
lgmc.editor@outlook.com

A color version of the Pick & Shovel is available at:  
<http://www.lincolngemmineralclub.org/index.php/newsletters/current>

# PICK & SHOVEL

## Hidden Gems by The Jewelry Connection Ltd.

Indian Village Shopping Ctr.

3227 S. 13th St., Lincoln (next to LAUNDROMAT)

**Corey Beer - Lapidary**  
402.890.9155

**Jayne Beer - Jeweler**  
402.890.3307

### 2025 Schedule

#### Lapidary Classes

(Stone Cutting)

**\$100 for 5 3-hour classes**

**Sundays 1:00 p.m. - 4:00 p.m.**

Choice of session:

- Session 1: Jan 26 - Mar 2
- Session 2: Mar 9 - April 20
- Session 3: Apr 27 - Jun 1
- Session 4: Jun 29 - Aug 3
- Session 5: Aug 10 - Sep 14
- Session 6: Sep 21 - Oct 26
- Session 7: Nov 2 - Dec 7

#### Silversmithing Classes

**Tuition: \$160 plus \$30 supply deposit**

Choice of Tuesday or Wednesday

7:00 p.m. - 10:00 p.m.

#### Tuesdays

- Session 1: Jan 21 - Feb 18
- Session 2: Feb 25 - Apr 15
- Session 3: Apr 22 - Jun 10
- Session 4: Jun 24 - Aug 12
- Session 5: Aug 19 - Oct 7
- Session 6: Oct 14 - Dec 2

#### Wednesdays

- Session 1: Jan 22 - Feb 19
- Session 2: Feb 26 - Apr 16
- Session 3: Apr 23 - Jun 11
- Session 4: Jun 25 - Aug 13
- Session 5: Aug 20 - Oct 8
- Session 6: Oct 15 - Dec 3

Contact: Jayne Beer 402-890-3307 or look up "Hidden Gems by The Jewelry Connection LTD" in Facebook and send message