



The Official Publication of the Lincoln Gem & Mineral Club, Inc.

THE PICK & SHOVEL

In association with



The Midwest Federation of
Mineralogical and
Geological Societies



The American
Federation of
Mineralogical Societies

The purpose of this corporation shall be to study, promote an interest in, and disseminate knowledge of lapidary and various Earth Sciences including but not necessarily limited to Geology, Paleontology and Mineralogy. It shall be a particular purpose of the corporation to provide education in these fields to its members and the general public, especially to youth and student groups.

Current club by-laws can be found at [www.lincolngemmineralclub.org/About/General Information](http://www.lincolngemmineralclub.org/About/General%20Information).

GENERAL MEETINGS

Third Thursday of the Month, except for January (3rd Sunday), December (1st Sunday), and summer break (June, July, August).

Meeting Times: Juniors meet at 6:15 p.m.
Adults meet at 7:00 p.m.

Next meeting: February 20, 2025

Program: Gemstone Identification by Jim MacNabb

BOARD MEETINGS

Until further notice, Board Meetings will be held at 6:30 p.m. on the first Thursday of each month.

Next Board Meeting:
Thursday, March 6, 2025 at 6:30 p.m.
Vera Lyman's Residence

Persons of general membership are invited to attend Board meetings and offer agenda items.



Graphic borrowed from <https://dhhs.ne.gov/Pages/Coronavirus.aspx>

2025 BOARD OF DIRECTORS

President: Brett Jurgens, 402.850.3256, quartz89@aol.com

1st Vice-President: Jayne Beer, 402.890.3307, JBeer60070@aol.com

2nd Vice-President: Clyde Ogg, 402.326.8682, clydeogg55@gmail.com

Treasurer: Vera Lyman, 402.464.6089

Secretary: Sharon Marburger, 402.429.3323, lgmc.editor@outlook.com

Board Member: Corey Beer, 402.466.6628

Board Member: Jeff Kubitz, 402.540.9395, jkubitz@neb.rr.com

Board Member: Mike Stiles, 402.890.1760, mcstiles72@outlook.com

Board Member: Charles Wooldridge, 402.975.0416, charles.wooldridgeii@gmail.com

2025 LONG RANGE PLANNING & BY-LAWS COMMITTEE

Jayne Beer, Chairman

1 year: Sharon Marburger & Clyde Ogg

2 years: Vera Lyman & Jim Marburger

3 years: Jayne Beer & Brett Jurgens

2025 NOMINATING COMMITTEE

Jayne Beer, Chairman

1 year: Jayne Beer & Brett Jurgens

2 years: Charles Wooldridge & Donitte Stiles

3 years: Vera Lyman & Ed Ridge

ANNOUNCEMENTS & CLUB FUN

DATES TO REMEMBER

February 20, 2025 - General Meeting
 March 15, 2025 - Rock Party at the Marburgers'
 March 20, 2025 - General Meeting
 April 3, 2025 - Field trip to Fairbury area
 April 4, 2025 - Show setup (all day) and Meet & Greet (5:30 p.m.)
 April 5 & 6, 2025 - Annual Show & Midwest Federation Convention
 April 17, 2025 - General Meeting
 May 15, 2025 - General Meeting
 June 21 & 22, 2025 - Summer Gem Fest

2025 DUES ARE NOW DELINQUENT.

Please pay your dues in order to be included in and receive the club directory (Who's Who).

SHOW PREP REMEMBER!!

DISPLAYS: Make sure to complete the form in order to have your display shown at the Show.

MEET & GREET AND BANQUET: Complete the form to reserve your spot at the Friday Meet & Greet at Hy-Vee and your spot at the Saturday MWF Banquet at the Event Center. Forms and payment must be made by February 28 so Sharon can get the food ordered in time for each event.

Forms are available on the website. Sharon will have paper forms at the meeting on February 20 for those not able to use the website.

FEBRUARY BIRTHDAYS

Allan Gossman
Connie McCartney
Sarahlynn Nichols
Donitte Stiles



ADVERTISING INFORMATION

Advertising by rock / hobby business or interest is permitted with the approval of the Board of Directors. Contact the Editor with your proposed ad. The rate is set at \$20.00 per full page; \$10.00 per 1/2 page; \$5.00 per 1/4 page (minimum) per issue, paid in advance to the Club treasurer. Ads will be placed throughout the newsletter as space permits.

Attention Members!

Please let Editor Sharon know your birth month so your special day can be acknowledged in the newsletter. You may send it in an email (lgmc.editor@outlook.com), text (402.429.3323), or let me know at any meeting.

Please send your hobby-related photos with captions or explanations for publication in the Pick & Shovel. Field trips, lapidary projects, fossil projects, metal projects, wire wrapping, tumbling, or any other activity of interest to the club. Your project may inspire someone else. Send via email (lgmc.editor@outlook.com) or via Facebook Messenger to Sharon Marburger (https://www.facebook.com/mamamar7880).

All articles, tidbits, and photos not individually identified as being contributed to this publication are provided by the Editor.

Follow us on Facebook:

<https://www.facebook.com/groups/223555904325876>

PICK & SHOVEL STAFF

PUBLISHER:

Lincoln Gem & Mineral Club, Inc.
 P.O. Box 5342
 Lincoln, Nebraska 68505

EDITOR:

Sharon Marburger
 E-mail: lgmc.editor@outlook.com

CIRCULATION:

Vera Lyman and Donitte Stiles;
 402.464.6089
 Sharon Marburger;
 402.429.3323

DEADLINE:

Last Sunday of the month.

PRESIDENT'S MESSAGE

By Brett Jurgens, President

Hello LGMC. With a united effort we have another successful Mid-Winter Swap behind us. The Swap could not have happened without members of the club helping out. I want to deeply thank Charisse Stillahn, Lee and Jan Amberg, and Sheryl Olson especially. These four stepped up to help out in the kitchen for the duration. Without their help, I would probably be done cooking by now but still working on dishes. I would also like to thank Barb and Clyde Ogg, Allan Gossman, and Ed Ridge for helping with cleanup after the swap. Sharon Marburger organized and managed the vendors and also helped Vera Lyman at the admission table. Brian and Kelly Beer fought the frozen ground to line the streets with our swap signs. If I am leaving anyone out, I apologize. I know I slept well that night.

Last year we realized we needed a bigger venue with more parking. Clyde Ogg scoured the city and came up with the Lincoln Firefighters Reception Hall. Mike Stiles helped by measuring and mapping the hall. We had good attendance from the public (especially for the first year in a new location) and the vendors I spoke with were happy.

Now it's showtime! We are just two months out from our annual show. This is our biggest club event of the year, and it takes the most work. I will have volunteer signup sheets at our February meeting. Please help out the club and sign up. It's a great way to meet other members of the club and to help promote our hobby. We are also looking for people willing to set up a display at the show. It would be great to show collections at all levels of expertise. Signup forms are available on the website and will be available at the February meeting. If you have a show



JUNIORS

by Brett Jurgens, Junior Leader

Hello Juniors. If you missed our Mid-Winter Swap, you missed out on some great rock deals and even better company!

Remember that January is when membership renews. If your membership is renewed before our February meeting, you will be entered into our prize drawing. You will be able to pay dues at the start of the meeting.

Our lesson will be focusing on the Showmanship badge for the Future Rockhound of America program. We will discuss different display options, and what makes a display informative and educational. I encourage you to consider setting up a display at our Show in April. It helps promote our club and hobby, and helps you earn your badge! I will have a volunteer signup sheet for our show at the next meeting. We need to show the public we have an active junior program and it helps to see junior members with parents helping to staff our booth. Make sure to bring your specimen kit as I will have a specimen for you to pick out.

See you at the meeting.

(Continued on page 4)

Lincoln Gem & Mineral Club's 65th Annual Show
in conjunction with the Midwest Federation of Mineralogical and Geological Societies' Annual Convention

PETRIFIED WOODS OF AMERICA

April 5 & 6, 2025

Sandhills Global Event Center

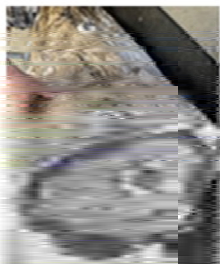
Ag Society Hall

84th & Havelock

Lincoln, Nebraska

Saturday, 9 a.m. to 5 p.m.

Sunday, 10 a.m. to 4 p.m.



FUN FOR THE WHOLE FAMILY

Youth Booth

Dealers

Exhibits

Demonstrators

Nebraska Gem Dig (outside)

Fluorescent Display

Mineral Identification



\$1 off paid admission with a can donation to the Food Bank!

Admission:

\$8 per adult

\$15 2-day pass

Children 11 and under

free with paid adult

<http://www.lincolngemmineralclub.org>

JANUARY BOARD MEETING MINUTES

No official meeting due to multiple illnesses.

JANUARY GENERAL MEETING

There was a short meeting following a successful Mid-Winter Swap.

The meeting was called to order at 6:40 p.m. The minutes were passed on a motion by Charles Wooldridge to accept them as printed in the Pick & Shovel, second by Gene Mulinix. Motion carried.

Treasurer Vera reported that all bills for 2024 have been paid, all Show dealer contracts and booth rents have been received and approved, and five selling demonstrator contracts and booth rents have been received. Sharon reported that the Nonprofit Organization Biennial Report has been submitted and paid online. It will be due again in January 2027. Charles Wooldridge moved to accept the Treasurer's Report, second by Allan. Motion carried.

President Brett talked about cases for the Show. He then asked for an update on the Federation Convention. Sharon and Jim said that everything has been taken care of until the reservations and orders are confirmed at the beginning of March.

Brett reminded us that volunteers are needed before, during, and after the Show.

Sharon said if anyone wants to run the Rock Pile on Saturday, to please let her know. She is required to attend the Federation meetings and will be unable to do it. The Federation will hold its Silent Auction on Sunday. We are welcome to help them run it and to bring donations to be auctioned off.

A reminder that Board meeting will be held on February 6 at 6:30 at Vera's home. General meeting will be February 20 at Bethany Park, regular time.

Jim Marburger moved to adjourn the meeting at 7:00, second by Donitte Stiles. Meeting adjourned.

**Be sure to watch for the
March issue of the
Pick & Shovel, scheduled
to be published the first
week of March, for
information and instruction
for the final prep of the Show.**

NYKKY'S CLASS

By Jayne Beer

On Sunday, January 5, 2025 at Hidden Gems Rock Shop, we had a wonderful wire wrap class with Nykky Lytle. This is one of my favorite pieces that I have made in her classes! We made a Prasiolite (green quartz) pendant.

We are constantly looking for good stones for her classes, then Nykky takes them and comes up with her incredible design ideas. For this class we had seven people show up. It was a great crew of students who all came out with great pendants. It is interesting how everyone comes up with slightly different designs, but they are all so nice.

For this class, we had 17 people signed up, so 10 people either canceled or "no called - no showed". This has been an increasing problem that we are working on a solution for.

The next class will be a labradorite eye on Thursday, February 27th at 6:00 p.m. Stop into Hidden Gems to sign up. Thank you!

**PRESIDENT'S MESSAGE - CONTINUED**

(Continued from page 3)

display case at home, it would be wonderful if you could bring it to the show. We are trying to have at least 70 cases to celebrate the 70th anniversary of the club.

All memberships are due on January 1 of each year. If you have not yet renewed your membership, please do so by the beginning of our February meeting. We no longer have late fees, but we will have a prize drawing at the February meeting for all current paid members.

Don't forget to buy a ticket for the awards banquet to be held on Saturday night of the show. Tickets are \$32 per person and must be purchased by February 28. Information can also be found on the website, and forms will be available at the February meeting. We don't often host the Midwest Federation show so this is a special treat. I would like to see a nice representation of the club at the banquet.

The juniors are looking for donations of mineral specimens to add to their collections. We are also in need of tumbled stones to sell at the show. If you have items to donate, please get in contact with me.

I'll see you at the February meeting.

MICHIGAN COLLECTING SPOTS: LAKE MICHIGAN BEACHES

By Clyde and Barb Ogg

We will begin in southwest Michigan and work our way north along the shore of Lake Michigan. Michigan's Lake Michigan shore has both rocky and sandy beaches so it's good to do a little research before you go so you won't be disappointed. There are some other great destinations on the Western shore: Sleeping Bear Dunes National Park, lighthouses, hiking trails, and lots of camping. Michigan has an abundance of beautiful inland lakes for boating, swimming, and fishing!

Many Lake Michigan beaches have Petoskey and Charlevoix stones, a variety of other fossils (corals, crinoids, brachiopods, and fossil soup), sea glass, slag glass, granite, unakite, quartz, and rarely, Lake Superior agates.

Van Buren State Park – Van Buren County

Open dawn to dusk daily

You will need a Michigan State Park Pass to enter the park, plenty of free parking
23960 Ruggles Rd, South Haven, MI 49090

This is a good spot for septarian nodules (also sometimes called lightning stones). Septarian nodules in this area are thought to have formed as a ball of clay (concretion) on the ocean floor around 55 million years ago. Over time the nodules of clay cracked, and the cracks were filled in with calcite giving a dark background and lighter cracks. This appearance is where the name, lightning stone, came from. This location is also good for a variety of Devonian fossils and fossil soup.

The park is home to high dune formations, a modern campground, one mile of sandy beach, woodland trails, and a day-use area. The park has outdoor bathrooms, picnic areas, and a playground, but no fresh water.

Pilgram Haven Natural Area – Van Buren County

Open dawn to dusk daily

Plenty of free parking

77000 18th Ave., South Haven, MI 49090

Follow your GPS instructions beginning at Exit 18 on I-196

This is another great spot for septarian nodules, also excellent for unakite, beach glass, fossils, and plenty of leaverites (leave 'er right there) such as concrete and asphalt chunks.

This natural area has outdoor bathrooms, picnic areas, and several excellent trails, but no fresh water. In addition to rock collecting, you can hike, view wildlife and wildflowers, paddle, and swim. Rock collecting is encouraged here but they ask that you collect a small number of rocks. They do not want you to remove large quantities, such as in 5-gallon buckets.

Pier Cove Park – Van Buren County

Open dawn to dusk daily

Limited parking on Lakeshore Drive

2290 Lakeshore Dr, Fennville, MI 49408

Follow your GPS instructions beginning at Exit 34 on Interstate 196

This is the best spot we have found for septarian nodules. Highly recommended! Septarian nodules are very common on this beach, but it's hard to find good displayable examples. Also good for beach glass, fossils, and a few other beach polished rock varieties.

The park has an outdoor bathroom, but no fresh water.

Point Betsie Lighthouse Beach – Benzie County

Open dawn to dusk daily

3701 Point Betsie Rd, Frankfort, MI 49635

This is not a long beach, but is a great spot to find chain coral, Charlevoix, and Petoskey stones. A variety of other fossils, granite, and unakite are also found there.

This area has no bathrooms or fresh water. You must park along the road leading to the lighthouse adjacent to the beach and walk to the beach area.

Peterson Park – Leelanau County

Open dawn to dusk daily

10001 E. Peterson Park Road, Northport, MI 49670

Even though incoming roads are paved, this is a remote area on the Leelanau Peninsula; we always run out of cell coverage when nearing the park. If you are using GPS to get there, you'll need a map or a good memory to help find your way back out! We tried collecting fluorescent yooperlites at night one year at Peterson Park. Even though we had been there before, it was tricky getting back to civilization again! Check out the pictures of Peterson Park and others in Leelanau County.

This is a good spot to find Petoskey stones, other fossils, unakite, and other pretty rocks on the Leelanau Peninsula. Highly recommended!

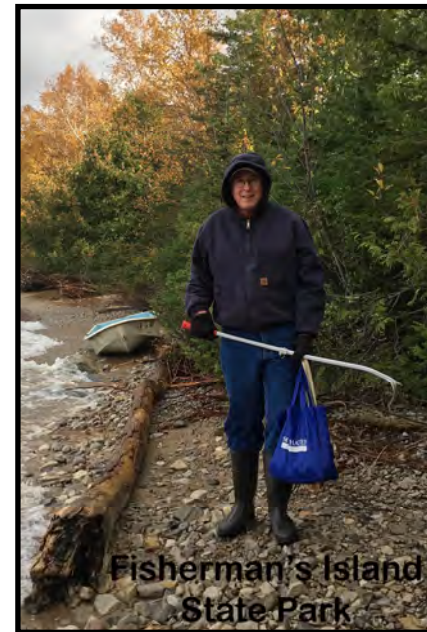
The park has outdoor bathrooms, picnic areas, and a playground, but no fresh water. Access to the beach requires that you go down (and up!) about 150 steps. We once walked down the stairs in foot-deep snow in late April!



(Continued on page 6)

MICHIGAN COLLECTING SPOTS: LAKE MICHIGAN BEACHES - CONTINUED

(Continued from page 5)



Christmas Cove Beach – Leelanau County

Open dawn to dusk daily
E. Christmas Cove Road, Northport, MI 49670

Christmas Cove is located just up the shoreline from Peterson Park, you will find similar rocks at both beaches. Christmas Cove is sandier, but overall is a great rock-hunting beach and is very peaceful. It is easier to access than Peterson Park, as the parking lot is immediately next to the beach.

There are picnic areas, but no bathrooms or fresh water here.

After Peterson and Christmas Cove Park sites, you must travel back down the Leelanau Peninsula, go through Traverse City, and up the East shore on Grand Traverse Bay to get to Fisherman's Island and Petoskey State Parks.

Fisherman's Island State Park – Charlevoix County

Open dawn to dusk daily
16480 Bells Bay Rd, Charlevoix, MI 49720

Fisherman's Island State Park is a popular spot for rockhounds. After storms and flooding in October 2019, we found freshly unearthed Petoskey stones in abundance! As you approach the park, you will drive directly toward Lake Michigan. At the point where you turn left to enter the park, you may choose to park and walk to the right. These beaches are not in the park, but similar finds. Highly recommended!

Fisherman's Island Park has a rustic campground, a 2.5-mile hiking trail and a day-use area. The park boasts more than 6 miles of unspoiled Lake Michigan shoreline that is loaded with water polished rocks. You should search among the trees along the shoreline to locate rocks that others overlook.

Petoskey State Park – Emmet County

Open dawn to dusk daily
2475 M 119 Highway, Petoskey, MI 49770-8915

Petoskey State Park, situated on Little Traverse Bay, is home to a one-mile beautiful beach along Lake Michigan, and is an extremely popular spot for collecting Petoskey and Charlevoix stones, and other fossils.

The park has two modern campgrounds and several wonderful trails.

We'll give you our favorite collecting spots on Lake Superior in the next Pick & Shovel. Stay tuned for Part Three!

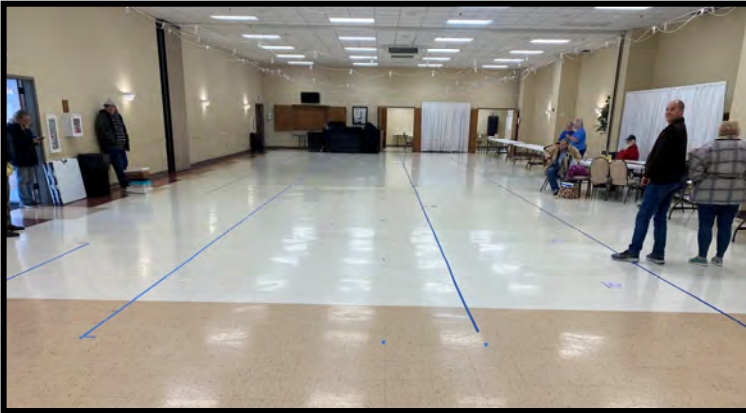


Pasta Supper following the Mid-Winter Swap. Thanks to Brett and the kitchen crew of Charisse, Lee, Jan, and Sheryl. It was delicious! Thank you, also, cleanup crew - Allan, Clyde, Barb, and Eddie.

MID-WINTER SWAP

By Sharon Marburger (photos by Jayne Beer and John Moss)

The 2025 Mid-Winter Swap went off without a hitch on Sunday, January 19. Being our first year at a new venue, Jim, Vera, and I showed up extra early (at 8:00 a.m.!) to get the floor plan mapped out on the floor, using painters' tape to define each "booth". Mike and Donitte Stiles and the Beers were close on our heels and their help was greatly appreciated. Other club members straggled in and helped as needed.



Marking the floor with tape to define each booth space. Photo by John.

Defining the vendor spaces did not take as much time as expected, so co-chair Jayne decided to let vendors in earlier than the 9:30 specified time. This did not create a problem because all spaces were reserved and assigned in advance.

Although there were three cancellations, we were able to fill the spaces by allowing three vendors to rent a second space for their booths. Now that we have a Swap under our belts at the new venue, we have determined there is enough room to add two more selling spaces.

The day was extremely cold; it was 1°F. with below zero wind chills when we arrived at the Lincoln Firefighters Reception Hall. The day didn't get much better. I believe the high temperature was 7°F., plus wind chill.

Jayne generously allowed Vera and me to move our admission table inside the room instead of out in the vestibule. It was still cold with the door opening with each entry, but it was nicer with the space heater Jayne loaned us. Then, of



Jim, Sharon, Vera, Corey. Photo by Jayne.

course, we had to battle the wifi to get our electronics to work. Life is so much easier with computers and the like. Ha!

We ended up with 18 vendors instead of the original 21, but every spot was filled and everyone was happy. You can't beat having a room full of happy vendors, especially when said room is filled with buyers! Thank you to our vendors Tim Aulner, Greg Syslo, Mike and Donitte Stiles, Ed Ridge, Aerie (Allan and Tammy Jeanneret), Spear T Fossils (Brad Nielsen), CR Rocks (Rowdy Cropp), Steve May and Dick Leib, Gene Mulinix, Zen Sage Crystals, Dick and Donna



Photo by Jayne.



Photo by John.

Farlow, GA Crystal Co (Brittany Lopez), Kessler on the Rocks (Randy Kessler), Afghan Silver (Hanif), Charles Wooldridge, Nykky Lytle, By the Beers (Hidden Gems), and jimspasttime (Jim Marburger).

Tear down was simple and fast. I learned that we will just mark spaces at the corners and not run the tape the entire length of a row. It was somewhat difficult to remove the tape after it was stepped on repeatedly throughout the day. Live and learn!

President and Junior Leader, Brett, spent most of the day in the kitchen preparing and serving food. We discovered part way through the day that we were not allowed to have snacks or any kind of food items for public consumption without a Food Handler's License and Food Handler's Permit. This differed from our previous venue. However, we could provide food for club members and our vendors. Going forward, we will arrange for a food truck to provide food for the public.

Brett prepared a vegetarian curry, beef enchiladas, and hot dogs/chili dogs for our internal lunch. It was all very tasty. For supper, with the help of several club members, a pasta supper was prepared (on site and potluck), which included

(Continued on page 8)

MID-WINTER SWAP - CONTINUED

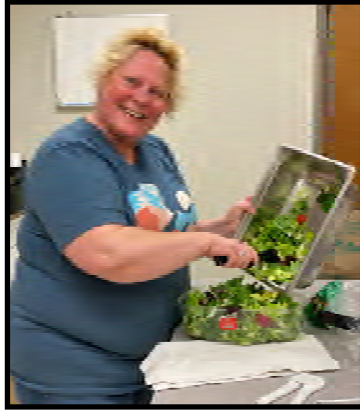
(Continued from page 7)

spaghetti and flat noodles with three choices of sauces (marinara meat, plain red sauce, and alfredo), green salad and dressing, croissants, crackers, spinach dip, and a plethora of desserts. There may have been more but I was so tired, I didn't notice.

Unfortunately, we did not get pictures of all of our vendors. Sorry to those not shown. (photos by John)
(Continued on page 9)



Brett getting ready to add coconut milk to the curry. Photo by John.



Jan mixing and serving up the salad. Photo by John.

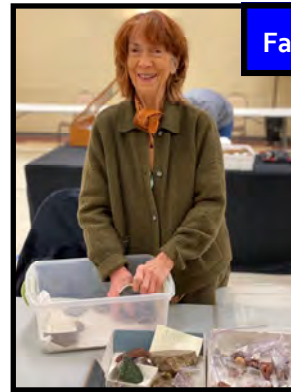
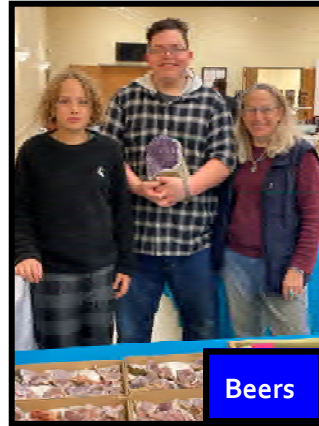


Barb taking over the important job of cleaning. Photo by John.

A short meeting followed the supper (see minutes on page 4).

Brett and his crew made sure the venue was clean enough to pass inspection.

We will hold the 2026 Mid-Winter Swap at this same venue. We paid for two years up front. I believe the consensus is to hold the Swap at this location going forward. It is a great venue; we heard nothing but compliments from club members, vendors, and the public. Several comments on how much better this venue is, compared to Bethany. We are pleased that everyone was happy.



MID-WINTER SWAP - CONTINUED

(Continued from page 8)

(Photos by John.)

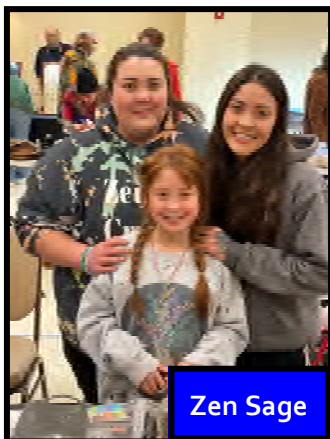


Photo borrowed from website <https://firefighterhall.com/>

MIDWINTER SWAP ... NEW LOCATION!

By Jayne Beer

We moved the swap out to the Lincoln Firefighters Reception Hall just north of West O Street and Sun Valley Boulevard after being in Bethany Park for many years. I was concerned that our customers wouldn't be able to find us there, so I was thrilled to see so many of them show up. I heard only great reviews of our new location. The space is bright and attractive and there is great parking nice and close. Even with so many customers showing up, it never seemed overly crowded.

These things, especially when we move to a new location, take lots of time on the part of the Board to coordinate and plan for all of the setting up of the new space. The day went smoothly with the help of members and nonmembers who worked in the kitchen and put out signs in the extreme cold. They stepped up to help in all the ways we needed them.

As always, if you saw things that we could do differently to improve our event, we are always listening and trying to make all of our events welcoming to vendors and customers. Thank you to all who made our midwinter swap a success.

THANKS FROM WOOLY

By Charles Wooldridge

I would like to thank everyone that helped make the swap a huge success. The food, the signs, the gate keeper and everyone else that I have failed to mention. There are too many to mention, by name! I think it was incredible to see, and I want you all to know how impressed and appreciative I am . Thank you!



Photo by Donitte Stiles

THE OZEMPIC EFFECT ON MINERAL COLLECTING

By Eric Fritzsich

Weight loss drugs are very popular these days and are sold by many companies and names. Most of these GLP-1 drugs are sold as slowing down digestion which makes one feel fuller and have a smaller appetite. One of the side effects that isn't so widely talked about is their effect on people's interests. People are reporting less interest in alcohol, shopping, drugs, and even sex. These drugs have also been reported to change people's interest in hobbies, such as mineral collecting.

Most collectors feel the happy chemicals in their brains when they collect. Dopamine, oxytocin, serotonin, and endorphins are released when you do a pleasurable activity. I get a slight manic high in Tucson when buying and acquiring new minerals. I've even been known to break out in a sweat when I find something interesting while collecting. Many collectors get excited, speak quicker and at a higher than normal pitch when talking about their interests or hobbies. In the train spotting hobby, it is often reported that spotters get so excited when a specific train comes by they will begin to foam at the mouth. The railroad industry calls these people "foamers."

An unusual experiment was conducted in Canada where a researcher paid drug users to take cocaine. He then gave a control group a chemical that reduced dopamine and reoffered cocaine. People still like the effects of the cocaine, they just didn't want it as badly. Most people know taking cocaine is bad for one's health, but they still take it. With the want removed or partially removed, they possibly re-think their decisions. It is thought a similar process goes on with these GLP-1 drugs, that they also tip the level of dopamine in our brains to lower the want. People on these drugs can even report anhedonia - a lack of interest and enjoyment in life.

With the rise in the popularity and use of GLP-1 drugs, grocery stores have noticed changes in the volumes and types of food people are buying. Yes, that membership card or loyalty club is there to study you and know what you are buying.

There is an unconscious process that creates want in one's brain. Our brain is connected directly to our stomach by the

nervous system and we've trained ourselves to trade off for dopamine and the other happy chemicals. It's why an overweight person eats beyond what is needed, an alcoholic drinks in excess, or a person takes unnecessary risks like climbing radio towers for the high they are chasing. Many addicts report "liking" something initially, but the like can quickly disappear and be replaced by a want more than a like. Cigarette smokers often complain of this issue that they don't like smoking after the initial few weeks but do so more out of a want. They want to continue the high.

Studies have shown that people are less motivated to make money in controlled test with suppressed dopamine levels. That signals less productivity at work, less profit for companies, less research, and a weaker economy. People still like money and it provides enjoyment.

I think this will manifest itself in live auctions. Most people set a pre-determined price limit to auctioned items. However, in the thrill of the live auction, bidding against another person, want increases. This increase in want happily leads to overbidding for the auctioneer and a higher price. If GLP-1 drugs subdue this want response this might make bidding wars a thing of the past.

Might Ozempic cause a reversal in mineral sales due to changing dopamine levels? It is hard to prove if such things will occur but data suggests yes. Keep in mind the tightness of the market and if as little as 5% of people lose interest in minerals, it could cause the whole market to collapse. We often do irrational things with want. Paying hundreds of dollars for a single mineral is sometimes justified if the want is there. With the want removed, the sale might not take place. You might still like the minerals, but the irrational part of paying huge sums of money for it, might cause you to reconsider.

A danger of these drugs is the blah feeling that can come with them. We've had a lot of blah left over from Covid and the isolation that many people went through. Social media has also created a blah in our lives. Now comes these drugs that lower want and it has the potential to alter our hobby and other hobbies as well.

LGMC Members!!

- It is very important that our members sign up in advance for display cases at the Show. We are hosting the Midwest Federation Convention and we want to put on a fantastic show for our regional friends.
- It is also important to sign up in advance for the Meet & Greet on Friday, April 4, and the Banquet on Saturday, April 5. The forms are available at <https://www.lincolngemmineralclub.org/happenings/2025-midwest-federation-convention>.
- If you plan to attend Wooly's field trip to the Fairbury area on April 3, it would be nice to indicate such on the Registration Form, so he has an idea of the number attending.

2026 MID-WINTER SWAP COMMITTEE

Chairman:
 Advanced Reservations: Sharon Marburger
 Club Booth/Rock Pile
 Finance & Admissions: Vera Lyman, Sharon Marburger
 Floor Chairman:
 Insurance Vera Lyman, Jim Marburger
 Publicity & Promotion: Jayne Beer, Jim Marburger
 Web Master: Sharon Marburger
 Youth Activities: Brett Jurgens

2025 SHOW COMMITTEE

Theme: Petrified Woods of America
 Chairman: Charles Wooldridge
 Dealers & Demonstrators: Vera Lyman
 Displays: Brett Jurgens
 Event Center Liaison Vera Lyman
 Finance/Ticket Sales: Jim Atkins, Vera Lyman
 Floor Chairman: Clyde Ogg
 Fluorescent Booth: Clyde Ogg
 Forms Sharon Marburger
 LGMC Club Booth: Charles Wooldridge
 MWF Convention Sharon Marburger
 Outside Rock Pile Charles Wooldridge
 Plants: Ed Ridge
 Publicity & Promotion: Jim Marburger
 Raffle Gene Mulnix
 Ribbons & Recognitions: Sharon Marburger
 Security: Vera Lyman
 Show Flyer & Printed Program Sharon Marburger
 Youth Activities: Brett Jurgens

2025 MWF CONVENTION PLANNING COMMITTEE

Chairman: Sharon Marburger
 Area Hotels Donitte Stiles
 Area Restaurants Brett Jurgens
 Banquet Sharon Marburger/Vera Lyman
 Competitive Displays Brett Jurgens
 Field Trips Charles Wooldridge/James Marburger
 Finance: Vera Lyman
 Forms: Sharon Marburger
 Ground Transportation Sharon Marburger
 Host Hotel Sharon Marburger
 Meeting Rooms Sharon Marburger
 Publicity & Promotion: Jim Marburger
 Web Master: Sharon Marburger

STANDING COMMITTEES

Audio/Visual:
 Clyde Ogg
Audit:
 Jayne Beer, James Marburger, Clyde Ogg
Christmas Party:
 Edward Ridge
Door Prizes:
 Corey Beer, Brett Jurgens, Charles Wooldridge
Facebook:
 James Marburger, Jayne Beer, Brett Jurgens
Field Trips:
 James Marburger
Historian:
 Sharon Marburger
Membership Record:
 Edward Ridge
Mid-Winter Swap
 Jayne Beer
MWF Liaison:
 Vera Lyman
Programs:
 Clyde Ogg
Property:
 James Marburger
Recognition/Awards:
 Vera Lyman, Sharon Marburger
Refreshments:
 Vera Lyman
Show - 2025:
 Charles Wooldridge
Summer Gem Fest:
 Jayne Beer
Website:
 Sharon Marburger
Youth Activities:
 Brett Jurgens

MEMBERSHIP INFORMATION

Membership dues for the Lincoln Gem & Mineral Club are as follows:

- Adults (age 16 and over) - \$20 per year or \$30 per couple (within the same household)
 - Juniors - \$3 per year (with a responsible adult)
- All new memberships must be accompanied by a written application. Prospective members must gain Board approval and attend one regular meeting or club event before paying dues. Applications are available on the website:
<https://www.lincolngemmineralclub.org/about/membership>, or you may contact Treasurer Vera Lyman for a printed copy.

Mail Exchange Newsletters to:
Lincoln Gem & Mineral Club, Inc.
P.O. Box 5342
Lincoln, NE 68505-0342



Or e-mail newsletters to:
lgmc.editor@outlook.com

A color version of the Pick & Shovel is available at:
<http://www.lincolngemmineralclub.org/index.php/newsletters/current>

PICK & SHOVEL

Hidden Gems by The Jewelry Connection Ltd.

Indian Village Shopping Ctr.

3227 S. 13th St., Lincoln (next to LAUNDROMAT)

Corey Beer - Lapidary
402.890.9155

Jayne Beer - Jeweler
402.890.3307

2025 Schedule

Lapidary Classes

(Stone Cutting)

\$100 for 5 3-hour classes

Sundays 1:00 p.m. - 4:00 p.m.

Choice of session:

- Session 1: Jan 26 - Mar 2
- Session 2: Mar 9 - April 20
- Session 3: Apr 27 - Jun 1
- Session 4: Jun 29 - Aug 3
- Session 5: Aug 10 - Sep 14
- Session 6: Sep 21 - Oct 26
- Session 7: Nov 2 - Dec 7

Silversmithing Classes

Tuition: \$160 plus \$30 supply deposit

Choice of Tuesday or Wednesday

7:00 p.m. - 10:00 p.m.

Tuesdays

- Session 1: Jan 21 - Feb 18
- Session 2: Feb 25 - Apr 15
- Session 3: Apr 22 - Jun 10
- Session 4: Jun 24 - Aug 12
- Session 5: Aug 19 - Oct 7
- Session 6: Oct 14 - Dec 2

Wednesdays

- Session 1: Jan 22 - Feb 19
- Session 2: Feb 26 - Apr 16
- Session 3: Apr 23 - Jun 11
- Session 4: Jun 25 - Aug 13
- Session 5: Aug 20 - Oct 8
- Session 6: Oct 15 - Dec 3

Contact: Jayne Beer 402-890-3307 or look up "Hidden Gems by The Jewelry Connection LTD" in Facebook and send message