



The Official Publication of the Lincoln Gem & Mineral Club, Inc.

THE PICK & SHOVEL

In association with



The Midwest Federation of
Mineralogical and
Geological Societies



The American
Federation of
Mineralogical Societies

The purpose of this corporation shall be to study, promote an interest in, and disseminate knowledge of lapidary and various Earth Sciences including but not necessarily limited to Geology, Paleontology and Mineralogy. It shall be a particular purpose of the corporation to provide education in these fields to its members and the general public, especially to youth and student groups.

Current club by-laws can be found at [www.lincolngemmineralclub.org/About/General Information](http://www.lincolngemmineralclub.org/About/General%20Information).

GENERAL MEETINGS

Third Thursday of the Month, except for January (3rd Sunday), December (1st Sunday), and summer break (June, July, August).

Meeting Times: Juniors meet at 6:15 p.m.
Adults meet at 7:00 p.m.

Next meeting: October 17, 2024

Program: Geological Sample Preparation and Analysis is
Lapidary by Daren Blythe
See description on page 2.

BOARD MEETINGS

Until further notice, Board Meetings will be held at 6:30 p.m. on the first Thursday of each month.

Next Board Meeting:
Thursday, November 7, 2024 at 6:30 p.m.
Vera Lyman's Residence

Persons of general membership are invited to attend Board meetings and offer agenda items.

2024 BOARD OF DIRECTORS

President: Brett Jurgens, 402.850.3256, quartz89@aol.com

1st Vice-President: Corey Beer, 402.466.6628

2nd Vice-President: Jayne Beer, 402.890.3307, JBeer60070@aol.com

Treasurer: Vera Lyman, 402.464.6089

Secretary: Sharon Marburger, 402.429.3323, lgmc.editor@outlook.com

Board Member: James Marburger, 402.430.6703, james.marburger@outlook.com

Board Member: Clyde Ogg, 402.326.8682, clydeogg55@gmail.com

Board Member: Mike Stiles, 402.890.1760, mcstiles72@outlook.com

Board Member: Charles Wooldridge, 402.975.0416, charles.wooldridgeii@gmail.com

2024 LONG RANGE PLANNING & BY-LAWS COMMITTEE

Jayne Beer, Chairman

1 year: Jayne Beer & Brett Jurgens

2 years: Sharon Marburger & Clyde Ogg

3 years: Vera Lyman & Jim Marburger

2024 NOMINATING COMMITTEE

Jayne Beer, Chairman

1 year: Jeff Kubitz & Vera Lyman

2 years: Jayne Beer & Brett Jurgens

3 years: Charles Wooldridge & Donitte Stiles

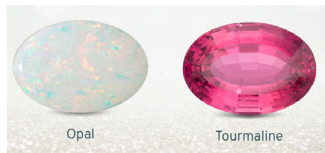
ANNOUNCEMENTS & CLUB FUN

Advanced Reservations for selling space at the Mid-Winter Swap are now being taken. Sign up on the club website:

lincolngemmineralclub.org/happenings/mid-winter-swap
Complete the form and pay through PayPal (PayPal, debit, or credit card). All reservations must be made through the website.

OCTOBER BIRTHDAY GREETINGS

Judith Bay
Sharon Jensen
Adeline H.
Julian H.



Attention New Members!

(and old members if you haven't yet provided the information)

Please let Editor Sharon know your birth month so your special day can be acknowledged in the newsletter.

You may send it in an email (lgmc.editor@outlook.com), text (402.429.3323), or let me know at any meeting.

ADVERTISING INFORMATION

Advertising by rock / hobby business or interest is permitted with the approval of the Board of Directors. Contact the Editor with your proposed ad. The rate is set at \$20.00 per full page; \$10.00 per 1/2 page; \$5.00 per 1/4 page (minimum) per issue, paid in advance to the Club treasurer. Ads will be placed throughout the newsletter as space permits.

Please send your hobby-related photos with captions or explanations for publication in the Pick & Shovel. Field trips, lapidary projects, fossil projects, metal projects, wire wrapping, tumbling, or any other activity of interest to the club. Your project may inspire someone else. Send via email (lgmc.editor@outlook.com) or via Facebook Messenger to Sharon Marburger (<https://www.facebook.com/mamamar7880>).

All articles, tidbits, and photos not individually identified as being contributed to this publication are provided by the Editor.

OCTOBER PROGRAM

Provided by Clyde Ogg, Program Chair

Speaker: Daren Blythe

Program Title: Geological Sample Preparation and Analysis is Lapidary

Daren's presentation will give an overview of the processes involved in sample preparation, with discussion about how these overlap with lapidary pursuits. He is interested in hearing about how lapidary enthusiasts approach rock processing, especially cutting and polishing.

Daren earned an M.S. degree in Physics, and after a few office jobs wound up making a career as an ice driller in Antarctica. He deployed ten times over 15 years (from 1999-2015), and then in 2015 landed a job as a lab/instrumentation manager in the UNL Department of Earth and Atmospheric Sciences. At UNL he manages the labs in Bessey Hall, where a significant part of his job is doing geological sample preparation, specially making thin sections for microscopic analysis. This involves cutting, mounting, and polishing rock specimens.

See Field Trip information on page 4

Follow us on Facebook:
<https://www.facebook.com/groups/223555904325876>

PICK & SHOVEL STAFF

PUBLISHER:

Lincoln Gem & Mineral Club, Inc.
P.O. Box 5342
Lincoln, Nebraska 68505

EDITOR:

Sharon Marburger
E-mail: lgmc.editor@outlook.com

CIRCULATION:

Vera Lyman;
402.464.6089
Sharon Marburger;
402.429.3323

DEADLINE:

Last Sunday of the month.

PRESIDENT'S MESSAGE

By Brett Jurgens

Hello LGMC.



We had a great turnout at our September meeting and another great program by Dr. Robert Diffendal. We had multiple new members and guests, particularly new junior members. This is how we grow our club and make sure it continues in the future.

One of my goals as president is to increase our membership. We have simplified the membership joining process, eliminated late fees, and added our display at Camp Creek. Clyde Ogg has done a wonderful job as Program Chair and we now have a fantastic program at every meeting.

My next goal is to increase our **active** membership. I know schedules and lives get really busy, but I encourage you, as members, to come to our meetings, our rock parties, and other activities. We have close to 100 members at this time, but rarely have more than 25 adult members at meetings or other events.

Our show in April takes a lot of work to make happen, both before and during the show. We have a core group of active members who are the backbone of the club, but a lot of those members are getting older. Please help the club continue by volunteering at our show and other events. Another way you can help out at our show is by setting up a display case. Our next show celebrates the 70th anniversary of the club. We are also hosting the Midwest Federation convention, so I would like to show off a bit. I have made it a personal goal for our club to have 70 displays for our 70 years as a club. For that we need people to display, but also need some more display cases. If you know where we can find any display cases like those used at our show, either Wichita or Northwestern cases, please let me know.

Wooly and Jackie are hosting a rock party at their home on Sunday, October 20th at 5 p.m. Rock parties are potlucks with great conversation, great food, and a chance to use some rock equipment to polish rocks. Wooly has also mentioned he has some buckets of rock to give out.

Our Mid-Winter Swap is fast approaching on Sunday, January 19th. Members had the chance to sign up for priority table choice at the September meeting. Advanced reservations for selling space is live on our website at this time. Please note that advanced reservations can be made only through the website.

Make sure to read Clyde's article on page 4 regarding the field trip to view UNL's fossil collection on October 26th. Attendance is limited and sign-up is required. I have viewed the collection in the past and highly recommend it.

Don't forget our costume contest for the October meeting! This is one of my favorite traditions of the club. Come dressed as a rock or mineral (or hobby-related item) and see if members can guess what you are.

See you at the meeting!

October Rock Party

Sunday, October 20, 2024
at 5:00 p.m.

**Bring your food dish
for the potluck and
your projects to work on.
Wooly will have some rocks
from an old collection
to hand out.**

Fun, fun, fun!

JUNIORS

by Brett Jurgens, Junior Leader

Hello Juniors.

It was great to see some familiar faces, and a lot of new ones, at our September meeting. The junior membership has really grown over the past year. This is fantastic! My goal has always been to promote hobby and to help the club thrive. The only way I see the club able to continue in the future is with new and young members.

With the increase of membership, we will need to start our meeting as close to 6:15 as possible. With so many inquisitive minds and wonderful questions, it is taking longer than in the past. And I fully support the questions and love when I have to look something up.

This month's meeting is on October 17th. It is our Halloween party. As always, we will have treats. If you bring items, please remember our meetings are peanut free. With the Halloween Party, one of our traditions is our costume contest during our general meeting. Please come dressed as a rock or mineral (or other hobby-related item). The club members then have to guess what rock or mineral you came as. In the past we have had some very creative ideas. See if you can stump our experts!

Don't forget to bring your specimen box. We will have a new specimen for you.

This month we have a Rock Party at Wooly's and Jackie's house on Sunday, October 20th at 5 p.m. Rock parties are potlucks where we gather and socialize. Attendees will be able to try rock polishing if they would like. Wooly also has some rock for members to pick through and take home. See more information about this elsewhere in this newsletter.

Make sure to read Clyde's article on page 4 regarding the field trip to view UNL's collection. I remember going as a kid and being amazed. The number of participants is limited so be sure to sign up. I'll see you at the meeting!



SPECIAL TOUR OF UNIVERSITY OF NEBRASKA STATE MUSEUM FOSSIL COLLECTIONS

By Clyde Ogg

Members are invited to a guided tour of the fossil collections of the University of Nebraska State Museum. Shane Tucker will lead the tour. These super impressive fossils are not normally available for the public to see and are in addition to what is available in Morrill Hall. You will be happy that you went.

The tour will take place in Nebraska Hall, on the University of Nebraska - Lincoln Campus. The tour is limited to 15 people at a time, so please sign up as soon as possible. A second tour will be scheduled if more than 15 people register for the first tour.

Registration is required. Call or text Clyde Ogg, phone number 402.326.8682. Registration is on a first come, first served basis. After the maximum number of 15 people is reached, you will be assigned to the second tour time. We're sorry for any inconvenience.

When: First tour is October 26th at 9:00 a.m. and the second tour (if needed) is October 26th at 11:00 a.m.
We will meet outside the main entrance of Nebraska Hall about 10 minutes before the start of each tour time. Please don't be late!

Where: Nebraska Hall, UNL Campus, main entrance at 16th and W streets (See arrow on the map). The tour will start outside the entrance and Shane will lead us the rest of the way.

Parking: Meters are available on the South side of W street between 14th and 16th Streets (See dashed line on the map).



NOMINATIONS FOR BOARD OF DIRECTORS

By Jayne Beer, Nominating Chair

Nominations for Officers and Board Members have been made. You may contact me (402.890-3307) if you have other nominations, or you would like to be on the Board. According to Article IV, Section 2 of the by-laws:

The nominee for President shall have served on the Board of Directors for the previous term. A nominee for any other office shall have had membership in the organization for at least the previous term.

Final nominations will be taken from the floor at the November meeting (annual business meeting) prior to voting.

Remember, more than one person may run for any seat on the Board. The Board determines the direction the club takes, so having good leadership is essential.

Here are the nominations to date:

President: Brett Jurgens

First Vice: Jayne Beer

Second Vice: Clyde Ogg

Treasurer: Vera Lyman

Secretary: Sharon Marburger

Board: Corey Beer

Board: Mike Stiles

Board: Charles Wooldridge

Board: Jeff Kubitz

SEPTEMBER BOARD MEETING MINUTES

Thursday, September 12, 2024
Home of Vera Lyman
by Sharon Marburger, 2024 Secretary

Roll Call

President:	Brett Jurgens	Present
1st Vice Pres.:	Corey Beer	Present
2nd Vice Pres.:	Jayne Beer	Present
Treasurer:	Vera Lyman	Present
Secretary:	Sharon Marburger	Present
Board:	Charles Wooldridge	Present
	Mike Stiles	Present
	James Marburger	Present
	Clyde Ogg	Present

Visitors: Ed Ridge and Donitte Stiles.

President Brett Jurgens called the meeting to order at 6:33 p.m. Minutes from the May and June meetings were distributed. Clyde moved to accept the minutes from both months, second by Wooly. Motion passed. The Treasurer's Report was read. Wooly moved to accept the report, second by Jim. Motion passed.

Sharon and Vera reported on the membership applications received over the summer.

Brett would like to have volunteers work the Omaha show on October 5 & 6.

OLD BUSINESS:

LGMC made a good showing at the Crawford Rock Swap. Members, friends, and family totaled 23. Four of the 73 vendors were club members. Brett (and mom) prepared several meals for us. Brett reported that 19 pounds of bacon was cooked. There were multiple field trips, both guided and on-your-own. At the Saturday night auction, the winning bid on the cornhole game that was donated was \$400, won by the person who made and donated the game. He then donated the game to the building for general use. Overall, it was a good Swap.

Brett is still working on field trips to Odell and to Nebraska Hall.

NEW BUSINESS:

Sharon proposed that Clyde and Barb Ogg be designated as the MWF Scholarship Honorees. They would find two graduate students in earth sciences to provide a \$4000 scholarship to each from the MWF. Wooly moved to nominate them as the Scholarship Honorees for 2025, Sharon seconded. Motion passed. Clyde accepted but stated he would have to check with Barb for her participation.

Vera has reserved Bethany Park Shelter House for 2025 general meetings. The dates are February 20, March 20, April 17, May 15, September 18, October 16, November 20, and December 7. The January meeting will be held at the Firefighters Union Hall following the Mid-Winter Swap.

Jayne offered the preliminary slate for the 2025 Board. Nominations from the floor will be taken at the September general meeting.

President: Brett Jurgens
1st Vice: Jayne Beer
2nd Vice: Clyde Ogg
Treasurer: Vera Lyman
Secretary: Sharon Marburger
Board: Corey Beer, Mike Stiles, Charles Wooldridge

Ed Ridge and Vera Lyman have accepted the nomination for the three year positions on the Nominating Committee.

The MWF has new t-shirts and zippered hoodies available for purchase. This will be presented to the general membership.

Brett proposed that the club have a badge. Sharon moved to take the proposal to the general membership, second by Mike. Motion passed. Ask if any member is experienced in graphic arts or has talent in designing. It was suggested to talk to newer member, Blake.

Sharon was asked to draft a proposal to add the audit committee to the by-laws.

Alan Eastman donated his collection to LGMC. The inventory will be sold through club rock pile and silent auction, proceeds going to the general club and juniors club. Jim and Sharon picked up the collection from Mr. Eastman and an inventory will be made available to the club.

SWAP BUSINESS:

Mike Stiles did a scale drawing of the Firefighters Union Hall for Jayne and Sharon to figure out floor plan. Sharon created a computerized floor plan to be put on the website for advanced reservations. Club members have first choice and may make their advanced reservations at the general meeting. Advanced reservations go live on the website following the meeting, but not later than October 1. Many thanks to Mike for mapping out the Hall.

SHOW BUSINESS:

Dealer and demo contracts were provided to review. Sharon was asked to contact the Event Center to confirm the amount of wattage available to each dealer, and add that information to the contract.

The Friday field trip at the Show has been changed from a river trip to hunting in the Nebraska Rock Pile outside of the Ag Society Hall. With all the setup work and the Friday night meet & greet, it is not feasible to make a distant field trip.

The dealer waiting list for the Show was discussed, as well as booth sizes. We will need to get input from the general membership as to changing booth sizes at future shows. We also need to make sure we follow the Fire Marshal's guidelines.

At 9:11 p.m., Wooly moved to adjourn the meeting, second by Mike. Meeting adjourned.

SEPTEMBER GENERAL MEETING MINUTES

Thursday, September 19, 2024
Bethany Park Shelter House
by Sharon Marburger, 2024 Secretary

The meeting was called to order at 7:01 p.m. by President Brett Jurgens. There were 24 adults and 11 juniors present.

Minutes were published in the Pick & Shovel. Vera Lyman moved to accept the minutes as printed, second by Jim Marburger. Motion carried.

Treasurer's Report was read by Vera. Sharon Marburger moved to accept the report, second by Donitte Stiles. Motion carried.

ANNOUNCEMENTS:

Wooly offered to host the October Rock Party. No date yet. Jayne will host the November Rock Party at Hidden Gems, no date yet. Because of all the other activities in December and January, there will be no Rock Parties. Mike and Donitte Stiles plan to host the February Rock Party, no date yet. The Marburgers will host the March Rock Party on Saturday, March 15 at 5:00 p.m.

Brett asked for volunteers to help with the Omaha Club Show on October 5 & 6.

Alan Eastman, a member from long ago, donated his collection to the club for the betterment of the organization. Proceeds from any sales will be split between the juniors and the general club. Some of the items may be put in a silent auction to be held during meetings. The inventory will be published in the Pick & Shovel.

The Midwest Federation has a new design for t-shirts and zip-up hoodies. The slogan on the back says, "Life is Better With Rocks". Sharon asked if anyone wanted to order; no takers.

OLD BUSINESS:

Brett thanked all the volunteers who helped out at the Camp Creek Threshers annual event on July 20-21.

The President's Field Trip to Crawford, Nebraska was a well-attended event. Approximately 23 club members, family, and friends from Lincoln had a wonderful time.

The Summer Gem Fest at the Beer Family Farm was another success. It had a great turnout. The Jurgens family provided a Saturday night supper for vendors and club members. Brett also prepared pancakes for Sunday breakfast.

NEW BUSINESS:

Vera has reserved Bethany Park Shelter House for the 2025 meetings. Reminder than the January meeting will be held following the Mid-Winter Swap at the Firefighters Union Reception Hall.

Brett would like the club to design a patch to be worn on a hat or other apparel. He asked if there was anyone with a design background who could help with this. No response.

Clyde and Brett are trying to arrange a field trip to Nebraska Hall to see the fossil collection not on display to the general public. More info to come.

SWAP BUSINESS:

Sharon had advanced reservation forms for selling tables/booths at the Mid-Winter Swap. Members were given first choice at selling spaces. The online form and floor plan will go live on the website no later than October 1.

SHOW BUSINESS:

The 2025 Show Chairman is Wooly. He has named several people to chair committees but still needs to fill some positions. Talk to Wooly if you would like to be involved.

To meet Fire Marshal requirements, we had to drop one full dealer and two half dealers.

Admission and booth prices have been increased. A one-day admission will be \$8, two-day will be \$15. Dealer booth rent will be \$550; Selling Demonstrators \$65 for one table and \$130 for two tables.

Brett is aiming to have at least 70 displays at the show. If anyone has, or knows of any, display cases to borrow or buy, let Brett know.

We are also hoping to have a tumbling table at the demonstration area near the juniors. There will different types of tumblers and examples of the stages of rock tumbling.

We are hosting the Midwest Federation Convention at this show. There will be a Thursday field trip to a limestone quarry in the Fairbury area as well as hunting for concretions and selenite on road cuts. Time allowing, the group will also go view dinosaur footprints in the area.

Meeting adjourned to snacks and program by Bob Diffendal at 7:30 on a motion by Wooly, second by Jim Atkins. Motion carried.

DATES TO REMEMBER

October 26, 2024 - Field Trip to Nebraska Hall (must sign up ahead of time)

November 21, 2024 - Annual Business Meeting/Elections

December 1, 2024 - Christmas Party & Awards Banquet

January 19 - Mid-Winter Swap

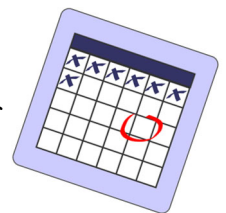
March 15, 2025 - Rock Party at the Marburgers'

April 3, 2025 - Field trip to Fairbury area

April 4, 2025 - Show setup

April 5 & 6, 2025 - Annual Show & Midwest Federation Convention

June 21 & 22, 2025 - Summer Gem Fest



LINCOLN GEM & MINERAL CLUB'S
44th Annual Mid-Winter Rock Swap



New Location!
Lincoln Firefighters Reception Hall
241 Victory Lane, Lincoln
(off Sun Valley Blvd)

Sunday, January 19, 2025
11:00 a.m. to 5:00 p.m.
Adults \$3.00; 15 and under FREE

FAMILY FRIENDLY
Fun for All!



**Buy,
 Sell, or
 Trade**

**Cash and
 Credit Card
 Sales**

**Lapidary
 Supplies
 &
 Equipment**

Jewelry

Fossils

**Rocks
 &
 Minerals**

**Help the Lincoln Food Bank
 replenish its shelves after
 the holidays. Bring canned
 items for the Food Bank.**

Swapper Booths: 9'x7.5' (tables NOT provided; Swappers need to bring their own tables.) - \$35

There are three spaces which include two 8-foot tables - \$50;

There is one space with one 8-foot table included - \$25

(Booth sharing permitted, but must be worked out between swappers)

Setup begins at 9:30 a.m.

Online advanced reservations only (www.lincolngemmineralclub.org)

See online floor plan for available tables/booths

Swappers are responsible for collecting Nebraska State Sales Tax and remitting it to the State.

LINCOLN GEM & MINERAL CLUB

Box 5342

Lincoln, NE 68505-0342

Contact: Sharon Marburger, 402.429.3323 or Jayne Beer, 402.890.3307

MUST SEE GEM, MINERAL, AND FOSSIL MUSEUMS

by Clyde and Barbara Ogg

As we travel, one thing that is always a priority for us is to visit local museums. Our interests include gems, minerals, and fossils so we seek out related museums. Listed here are some of the museums we have visited recently. This is by no means a complete list; there are undoubtedly other great rock-related museums we haven't yet discovered. We hope you will find this information useful.

A.E. Seaman Mineral Museum – Houghton, Michigan

Monday – Saturday 9:00 a.m. to 5:00 p.m.

Michigan Tech Campus

1404 E. Sharon Ave., Houghton, MI 49931

(906) 487-2672

<https://museum.mtu.edu/>

\$8 Adult

\$7 Senior

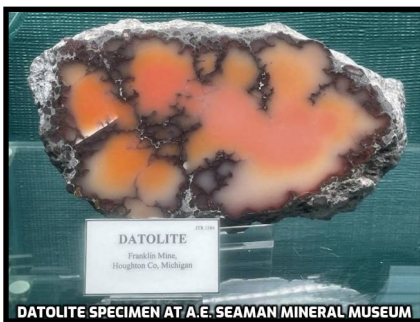
\$4 Student (with college ID)

\$3 Junior (ages 9-16)

Free for children up to age 8

Parking is free

One of North America's premier mineral museums, the A.E. Seaman Mineral Museum is nationally and internationally recognized by mineral collectors and connoisseurs. Featuring the largest public exhibit and finest collection of minerals from the Great Lakes region and the world's best collection of Michigan minerals, the museum exhibits feature the rich colors of nature's masterpieces. While visitors marvel, they learn about minerals through informative displays and discover how minerals are important in your life.



One of the best mineral museums we have seen. Highly recommended!



Lizzadro Museum of Lapidary Art – Oak Brook, Illinois

Tuesday - Saturday 10:00 a.m. to 5:00 p.m.

Sunday - 12:00 noon to 4:00 p.m.

Monday - Closed

1220 Kensington Road, Oak Brook, IL 60523

(630) 833-1616

<https://lizzadromuseum.org/>

\$10 Adults

\$8 Seniors

\$5 Students, Teens and Children 7-12

Free for children 6 and under

Wednesday is free admission day

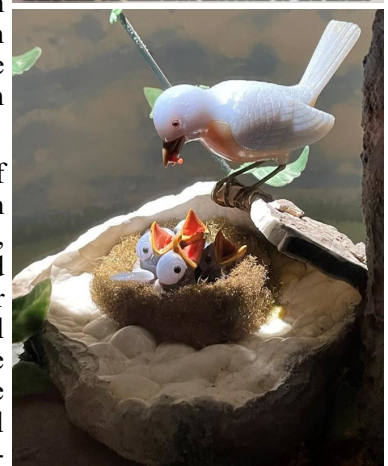
Parking is free

The Lizzadro Museum displays more than 200 pieces of jade and other hardstone carvings from around the world, featuring several internationally famous pieces. Included are a fine nephrite jade imperial altar set completed during the Ming Dynasty (1368-1644) and an exquisite cinnabar screen encrusted with carved gemstones. The screen was a birthday gift to the Chinese emperor, Qianlong (Ch'ien Lung) in 1791. Both the screen and the altar set were originally housed in the lavish imperial palaces of China.

Other prime examples of lapidary art are exhibited in the form of snuff bottles, modern and antique vases and bowls, and many other decorative and functional items. Three walls of the Museum's main floor feature dioramas, each one a small scene populated by gem-carved creatures native to that environment. Children and adults alike are fascinated by the gemstone inhabitants of these dioramas, all of which were carved in Idar-Oberstein, Germany.



JADE SHIP AT LIZZADRO MUSEUM OF LAPIDARY



BLUEBIRDS AT LIZZADRO MUSEUM OF LAPIDARY



ROSE QUARTZ AT LIZZADRO MUSEUM OF LAPIDARY

The museum's collection also features beautiful examples of Florentine and Roman stone mosaics, cameos and

(Continued on page 9)

MUST SEE MUSEUMS - CONTINUED

(Continued from page 8)

intaglios, and displays of faceted gemstones and mineral specimens. Finally, the awe-inspiring Castle Lizzadro is an 18K gold sculpture with diamond windows sitting on a base of mineral specimens.



The Rock and Mineral experience features exhibits exploring the world of earth science. Learn how a tree turns to stone, how hard jade is, what minerals make up granite and see fossils through geologic time. Exhibits include rough and polished stone with outstanding minerals. Touch a meteorite or watch short videos on jade carving, cabochon cutting, faceting and an introduction to the Museum exhibits. Interact with the Illinois map and fluorescent mine along with hands on specimens.

The best lapidary museum we have seen. Highly recommended!



New Mexico Bureau of Geology Mineral Museum – Socorro, New Mexico

Monday - Friday 9:00 a.m. to 5:00 p.m.

Saturday - 10:00 a.m. to 3:00 p.m.

Sunday - CLOSED

New Mexico Tech Campus

801 Leroy Place, Socorro, NM 87801

(575) 835-5490

<https://geoinfo.nmt.edu/museum/>

\$8 Adult

\$7 Senior

\$4 Student (with college ID)

\$3 Junior (ages 9-16)

Free for children up to age 8

Parking is free

Upon the campus of the New Mexico Institute of Mining and Technology lies one of the great treasure troves of the southwest. Gold, silver, and precious gems, the objects of the Conquistador's travels and travails, glitter on glass shelves next to other spectacular mineral forms. This El Dorado was given the honorary title "Coronado's Treasure Chest" by the New Mexico Cuarto-Centennial Commission in 1939. Located in the Headen Center on the NMT campus, modern travelers on the Camino Real can visit six days a week.

Three thousand mineral specimens in 1938 have grown to over 18,000. Mineral exhibits in the museum concentrate mainly on New Mexico, but also include specimens from around the world. Minerals from eight important New

Mexico mining districts and areas (Organ, Santa Rita and Tyrone, Fierro-Hanover, Hansonburg, Magdalena, Old and New Placers, NM Pegmatites, and NM Uranium districts) highlight important minerals from each location.

Excellent specimens representing the local geology. Highly recommended!



Museum of Geology – Rapid City, South Dakota

Monday – Saturday 9:00 a.m. to 4:30 p.m.

Sunday - CLOSED

South Dakota Mines Campus

501 E. Saint Joseph St., Rapid City, SD 57701

(605) 394-2511

<https://www.sdsmt.edu/student-life/campus-points-of-interest/museum-of-geology/index.html>

\$10 Adults

\$8 Seniors and Veterans

\$5 Children (ages 6-15)

Free for children under 6

Admission prices are suggested, but not required

Parking is free

Everyone is invited to tour this museum to explore the world around them going back more than 500 million years! Come to the complete skeletal fossils of mammals, marine reptiles, fish, and dinosaurs that roamed South Dakota. They also have a stunning collection of minerals from all over the world that are sure to amaze and educate! Don't forget to bring the little ones, the brand-new Kid Zone has tons of hands-on activities that are engaging for all ages! The Museum of Geology at the South Dakota School of Mines & Technology explores the natural history of Earth through scientific inquiry, preserves specimens and data as a dedicated repository for scientific research, and promotes understanding of geoscience and evolution through displays and outreach initiatives. The exhibits and public programs are located on the third floor of the O'Harra Building; the collections and laboratories are in the Paleontology Research Laboratory.

Excellent local mineral and fossil specimens. Highly recommended!



INVENTORY OF COLLECTION DONATED BY AL EASTMAN

Alabaster, 4 large chunks, 2 small chunks
 Amethyst from Maine, large (24" saw size)
 Aventurine, large & small chunks
 Blue Forest petrified wood
 "Cool Zen Hot Rock" – uses wick or small candle
 Coprolite ?
 Coral, 1 small & 1 medium chunk
 Coral stems
 Crazy Lace Agate/Onyx – approximately 10 lbs.
 Dinosaur Bone, 2 pieces
 Emerald in host rock - 2
 Emerald, jar
 Fiber optic sphere
 Fluorite
 Fossil agate (24" saw size)
 Fossil Fish Plates
 43 complete – one broken in half
 20+ partial
 10 multiple
 2 large plates to be used as displays
 1 14-inch fish, split, both halves
 Baby dipters, complete
 Partial phareodie – 12"
 Practice plate?
 2 what appear to be plant fossils
 Garden Rock
 Garnet, large, 1-inch
 Gastroliths, 5, 3, 2
 Geode
 Geode Rhyolite – approximately 18 lbs.
 Gold ore or pyrite
 Granite, several pieces
 Granite tile, 5"x10"
 Gypsum/onyx, part of stalagmite, carvable
 Jade, Black, small chunk
 Jade, 2 large chunks
 Jade, large piece, 16" saw size
 Jade, small chunk
 Jade, thin splinters, 1 large, 1 small
 Jade, very large, will be cut into 3 or 4 manageable pieces
 Jar of black sand – could have Placer gold, small magnet
 Jasper
 Jasper, Gray (24" saw size)
 Lysite, 1 large piece
 Maison Creek, Illinois fossil
 Metamorphic rock, several pieces
 Mexican Plume Agate – approximately 2 lbs.
 Mica & associated minerals, gold field material & black
 tourmaline (sandwich baggie)
 Mica books, several
 Mica books, large, 2

Mica, medium, several pieces
 Moroccan Fossil, upright polished piece
 Moss agate, Red (24" saw size)
 Moss Agate, Red, small & medium chunks
 Obsidian (rainbow, silver sheen, plain)
 Obsidian, 5 large pieces
 Obsidian, Rainbow, assorted chunks, 9
 Oil shale
 Onyx bookends, chess knights
 Pennsylvania fern fossil
 Petrified Wood specimen
 Petrified Wood, slab
 Pyrite on host rock
 Pyrite, tiny in host rock
 Quahog shell, broken
 Quartz point, 2"
 Quartz, Rose, small piece
 Quartz, smokey, cluster
 Rainbow glass spheres/marbles, about 18
 Rhyolite chunk, 2 pieces
 Rocks, 7
 Sandstone
 Schist, 1 small & 1 medium chunk
 Selenite, several pieces
 Serpentine, green, medium chunk
 Serpentine, small chunk
 Shell, very nice (sell for \$20)
 Silicated mudstone
 Specimen – form of pumice
 Specimen – mercury/arsenic
 Sponge
 Tourmaline (\$15)
 Tourmaline, large
 Tourmaline, small
 Unknown rock (24" saw size)

There is one 5-gallon bucket of average rocks that will be sold at the club Rock Pile during the Mid-Winter Swap, Show, and/or Summer Gem Fest. The better pieces of this collection will be made available to club members at Silent Auction during one or more meetings. Anything not sold during silent auction will be individually priced and set out at the club Rock Pile or will be used as door prizes at meetings.

The September meeting saw three fossil fish given out as door prizes.

Proceeds from the sale of this collection will be divided between the General Fund and the Juniors' Fund.

We thank Mr. Eastman for his generous donation. We will put it to good use.

2025 MID-WINTER SWAP COMMITTEE

Chairman:.....Jayne Beer
Advanced Reservations:.....Sharon Marburger
Club Booth/Rock PileSharon Marburger & helper
Finance & Admissions:Vera Lyman, Sharon Marburger
Floor Chairman:Jayne Beer
Insurance Vera Lyman, Jim Marburger
Publicity & Promotion:Jayne Beer, Jim Marburger
Venue Layout DrafterMike Stiles
Web Master:Sharon Marburger
Youth Activities:Brett Jurgens

2025 SHOW COMMITTEE

Theme: Petrified Woods of America
Chairman:.....Charles Wooldridge
Dealers & Demonstrators:.....Vera Lyman
Displays:Brett Jurgens
Event Center Liaison.....Vera Lyman
Finance/Ticket Sales:Jim Atkins, Vera Lyman
Floor Chairman:Clyde Ogg
Fluorescent Booth:Clyde Ogg
FormsSharon Marburger
LGMC Club Booth:Charles Wooldridge
MWF ConventionSharon Marburger
Outside Rock Pile.....Charles Wooldridge
Plants:.....Ed Ridge
Publicity & Promotion:Jim Marburger
Raffle.....Gene Mulinix
Ribbons & Recognitions:Sharon Marburger
Security:Vera Lyman
Show Flyer & Printed Program.....Sharon Marburger
Youth Activities:Brett Jurgens

2025 MWF CONVENTION PLANNING COMMITTEE

Chairman:.....Sharon Marburger
Area Hotels.....Donitte Stiles
Area RestaurantsBrett Jurgens
BanquetSharon Marburger/Vera Lyman
Competitive DisplaysBrett Jurgens
Field TripsCharles Wooldridge/James Marburger
Finance:.....Vera Lyman
Forms:Sharon Marburger
Ground TransportationSharon Marburger
Host HotelSharon Marburger
Meeting RoomsSharon Marburger
Publicity & Promotion:Jim Marburger
Web Master:Sharon Marburger

STANDING COMMITTEES

Audio/Visual:
Clyde Ogg
Audit:
Jayne Beer, James Marburger, Clyde Ogg
Christmas Party:
Edward Ridge
Door Prizes:
Corey Beer, Brett Jurgens, Charles Wooldridge
Facebook:
James Marburger, Jayne Beer, Brett Jurgens
Field Trips:
James Marburger
Historian:
Sharon Marburger
Membership Record:
Edward Ridge
Mid-Winter Swap
Jayne Beer
MWF Liaison:
Vera Lyman
Programs:
Clyde Ogg
Property:
James Marburger
Recognition/Awards:
Vera Lyman, Sharon Marburger
Refreshments:
Vera Lyman
Show - 2025:
Charles Wooldridge
Summer Gem Fest:
Jayne Beer
Website:
Sharon Marburger
Youth Activities:
Brett Jurgens

MEMBERSHIP INFORMATION

Membership dues for the Lincoln Gem & Mineral Club are as follows:

- Adults (age 16 and over) - \$20 per year or \$30 per couple (within the same household)
- Juniors - \$3 per year (with a responsible adult)

All new memberships must be accompanied by a written application. Prospective members must gain Board approval and attend one regular meeting or club event before paying dues. Applications are available on the website:

<https://www.lincolngemmineralclub.org/about/membership>, or you may contact Treasurer Vera Lyman for a printed copy.

Mail Exchange Newsletters to:
Lincoln Gem & Mineral Club, Inc.
P.O. Box 5342
Lincoln, NE 68505-0342



Or e-mail newsletters to:

A color version of the Pick & Shovel is available at:

<http://www.lincolngemmineralclub.org/index.php/newsletters/current>

PICK & SHOVEL

Hidden Gems by The Jewelry Connection Ltd.

Indian Village Shopping Ctr.

3227 S. 13th St., Lincoln (next to LAUNDROMAT)

Corey Beer - Lapidary
402.890.9155

Jayne Beer - Jeweler
402.890.3307

Lapidary Classes

(Stone Cutting)

\$75 for 5 3-hour classes

Choice of session:

Saturday 1 p.m. - 4 p.m.

Sunday 1 p.m. - 4 p.m.

If you can't attend a session,
let us know by Friday noon, or
you will be charged as if you
were there.

Drop-in students welcome
when openings are available,
\$15 for 3 hours.

Check Lincoln Gem and
Mineral Club Facebook page
for openings.

Silversmithing Classes

Tuition: \$150 plus \$30 supply deposit

Choice of Tuesday or Wednesday

7:00 p.m. - 10:00 p.m.

Tuesdays

Session 1: Jan 9—Feb 27

Session 2: Mar 5—Apr 23

Session 3: Apr 30—Jun 18

Session 4: Jun 25—Aug 13

Session 5: Aug 20—Oct 8

Session 6: Oct 15—Dec 3

Wednesdays

Session 1: Jan 10—Feb 28

Session 2: Mar 6—Apr 24

Session 3: May 1—Jun 19

Session 4: Jun 26—Aug 14

Session 5: Aug 21—Oct 9

Session 6: Oct 16—Dec 4

Contact: Jayne Beer 402-890-3307 or look up "Hidden Gems by The Jewelry Connection LTD" in Facebook and send message