



The Official Publication of the Lincoln Gem & Mineral Club, Inc.

THE PICK & SHOVEL

In association with



The Midwest Federation of
Mineralogical and
Geological Societies



The American
Federation of
Mineralogical Societies

The purpose of this corporation shall be to study, promote an interest in, and disseminate knowledge of lapidary and various Earth Sciences including but not necessarily limited to Geology, Paleontology and Mineralogy. It shall be a particular purpose of the corporation to provide education in these fields to its members and the general public, especially to youth and student groups.

Current club by-laws can be found at [www.lincolngemmineralclub.org/About/General Information](http://www.lincolngemmineralclub.org/About/General%20Information).

GENERAL MEETINGS

Third Thursday of the Month, except for January (3rd Sunday), December (1st Sunday), and summer break (June, July, August).

Meeting Times: Juniors meet at 6:15 p.m.
Adults meet at 7:00 p.m.

Next meeting: **March 21, 2024**

Program: "Geology and Hydrogeology of Northeastern Nebraska"
by Kevin Schwartman

BOARD MEETINGS

Until further notice, Board Meetings will be held at 6:30 p.m. on the first Thursday of each month.

Next Board Meeting:
Thursday, April 4, 2024 at 6:30 p.m.
Vera Lyman's Residence

Persons of general membership are invited to attend Board meetings and offer agenda items.

2024 BOARD OF DIRECTORS

President: Brett Jurgens, 402.850.3256, quartz89@aol.com

1st Vice-President: Corey Beer, 402.466.6628

2nd Vice-President: Jayne Beer, 402.890.3307, JBeer60070@aol.com

Treasurer: Vera Lyman, 402.464.6089

Secretary: Sharon Marburger, 402.429.3323, lgmc.editor@outlook.com

Board Member: James Marburger, 402.430.6703, james.marburger@outlook.com

Board Member: Clyde Ogg, 402.326.8682, clydeogg55@gmail.com

Board Member: Mike Stiles, 402.890.1760, mcstiles72@outlook.com

Board Member: Charles Wooldridge, 402.975.0416, charles.wooldridgeii@gmail.com

2024 LONG RANGE PLANNING & BY-LAWS COMMITTEE

Jayne Beer, Chairman

1 year: Jayne Beer & Brett Jurgens
2 years: Sharon Marburger & Clyde Ogg
3 years: Vera Lyman & Jim Marburger

2024 NOMINATING COMMITTEE

Jayne Beer, Chairman

1 year: Jeff Kubitz & Vera Lyman
2 years: Jayne Beer & Brett Jurgens
3 years: Charles Wooldridge & Donitte Stiles

ANNOUNCEMENTS & CLUB FUN

MARCH PROGRAM

Kevin Schwartman – “Geology and Hydrogeology of Northeastern Nebraska”

Notes from a field trip by the Nebraska Geological Society on October 16-21, 2021. On this trip, participants looked at the geology, water management, and geological hazards of northeastern Nebraska. This presentation will briefly cover each of the twelve stops made, with emphasis on items that Kevin found most interesting. Stops included the failed Spencer Dam and damage left behind by the 2019 flooding, the Niobrara State Park area, Groundwater Management Area, Ponca State Park, and the Dakota Sandstone and other rock outcrops.

Kevin is a professional geologist who is the 15th geologist to be licensed with the state to practice geology. He has been with the State of Nebraska for over 32 years. Kevin works with the Natural Resource Districts to manage their surface and ground water resources. This year he will help update the geologic and hydrologic sections of most of the Integrated Management Plans across the state. Kevin began collecting rocks, minerals, and fossils very early in life and has enjoyed doing lapidary work for over thirty years.

MARCH BIRTHDAY GREETINGS

Martin Dougherty

Greg Ford

Bob Grimit

Jim Marburger



Aquamarine



Bloodstone

Please send your hobby-related photos with captions or explanations for publication in the Pick & Shovel. Field trips, lapidary projects, fossil projects, metal projects, wire wrapping, tumbling, or any other activity of interest to the club. Your project may inspire someone else. Send via email (lgmc.editor@outlook.com) or via Facebook Messenger to Sharon Marburger (<https://www.facebook.com/mamamar7880>).

With the current increase of respiratory illnesses, it is suggested to wear a mask to protect yourself and others.



**Please continue to do your part.
Wear a mask to meetings.**

Graphic borrowed from <https://dhhs.ne.gov/Pages/Coronavirus.aspx>

Follow us on Facebook:
<https://www.facebook.com/groups/223555904325876>

FEBRUARY BOARD MEETING



By Sharon Marburger, Secretary

The Board had a discussion using Facebook Messenger. President Brett and Clyde were ill; first and second Vice Presidents had gone to Tucson; and Wooly had undergone surgery, leaving only four Board members available to meet. Since quorum could not be met, it was determined to handle business electronically.

Minutes of the January meeting were distributed. Mike moved to accept the minutes, second by Clyde. Motion passed with 5 electronic yes and one in person yes. (Pick & Shovel mailing labels were taken to Vera, so she got to vote.)

Treasurer’s report will be reviewed at the March meeting.

Patrick Carey submitted an application for membership. Sharon moved to accept application, second by Jim. Four electronic yes, one in person yes. Motion passed.

Discussion and approval of Clyde’s poster for the fluorescent booth will be discussed at the March Board meeting since there was no motion or voting electronically.

PICK & SHOVEL STAFF

PUBLISHER:

Lincoln Gem & Mineral Club, Inc.
P.O. Box 5342
Lincoln, Nebraska 68505

EDITOR:

Sharon Marburger
E-mail: lgmc.editor@outlook.com

CIRCULATION:

Vera Lyman;
402.464.6089
Sharon Marburger;
402.429.3323

DEADLINE:

Last Sunday of the month.

All articles, tidbits, and photos not individually identified as being contributed to this publication are provided by the Editor.

PRESIDENT'S MESSAGE

By Brett Jurgens



We had a fantastic program on Ash Falls by Shane Tucker at our February meeting. A big thank you to Shane for providing yet another fantastic learning opportunity to our club.

The big focus this time of year is our quickly approaching show on April 6th and 7th. I've got a lot of info, and some asks, in my message so please read all the way through.

One of the many differences between our swap and our show are display cases. LGMC is known for both the quantity and quality of displays at the show. We hear compliments from both show attendees and dealers. Dealers often compliment how we have more and better displays than other shows they vend at. Please help keep up the tradition by signing up for a display case. Displays do not have to be the show theme, and we encourage people to show off all levels of collections. Also, if anyone knows of extra show cases, either Wichita (wedge shaped non-lit) or Northwesterns (approx 4'x2' and lit), please let me know. I am in search for more.

Another important part of our show are the demonstrators; we have both selling and nonselling demonstrators. Selling demonstrators pay a table fee, and are able to sell only the items they are demonstrating. Demonstrators must actively demonstrate at least 15 minutes every hour. We still have some spots open for our show. If interested, please talk to Jayne Beer or me.

All of this talk about the show and I haven't mentioned what is an absolute must for making the show happen - **volunteers!** There is absolutely no way the show could happen without volunteers to staff different stations during show hours. At the February meeting, we began a signup sheet, and we have lots of spots to fill! We always need help on Friday morning for set up, and also Sunday immediately after the show for tear down. During the show we have two hour volunteer spots for the following areas - Ticket Booth, Club Booth, Rock Pile (formerly Silent Auction), Fluorescent Display, and Juniors Booth. I am hoping for members to sign up to allow others who have traditionally been stuck staffing a position, are able to walk around and enjoy the show. You can either sign up for spots at our March meeting or reach out to me at quartz89@aol.com or 402-850-3256.

Please promote the show as well. I am looking into getting yard signs printed. If you are in a high traffic area and willing to put a sign up, please let me know. Also, please share and post about the show online. Postcards are still available to distribute if you would like some. There is also a printable poster on our website. The show is the best way to introduce the public to our club. Please do your part to help our club grow.

Registration for vendor space for our Summer Gem Fest on June 22 and 23 is now open. Please see our website for signing up. The indoor spaces are filling up fast. Once we are through our April show, we will shift to promoting the

EFMLS NEW YEAR'S RESOLUTIONS

As printed in the February 2024 AFMS Newsletter
Provided by Ellery Borow, AFMS Safety Chair

Still not decided on your New Year's resolutions? Here are some ideas that rock:

- ◆ Want to lose 10 pounds? How about resolving to donate 10 pounds of extra rocks /minerals /fossils to your club to use in your youth group, show silent auction, or club fundraising activity.
- ◆ Want to get more exercise? How about helping out at your club show, picnic, field trip, or public service event.
- ◆ Want to try and get more people to smile? How about going to club meetings prepared to tell a joke, funny story from a field trip, or about a spectacular find at a show.
- ◆ Want to see the world? How about helping your club field trip leader check out new collecting site possibilities.
- ◆ Want to save the environment? How about picking up some of the trash you might find at your favorite (or next favorite, or any) collecting site.
- ◆ Want to learn a new skill (or teach another some of your skills)? How about sponsoring a learning opportunity class for your club members on mineral ID, jewelry making, lapidary, beading, or silver smithing.
- ◆ Want to reach out to make a new friend? How about chatting with new club members - people who might have like interests, different experiences, know of different collecting places, or might have some very interesting new and different hobby experiences.
- ◆ Want to practice unique cooking skills? How about helping your club's refreshment, picnic, or show food concession.
- ◆ Want to do some creative writing? How about writing for your club newsletter, create the write-ups for club events, or prepare articles about club activities for local newspapers/social media.
- ◆ Want to be safe in all you do for the new year? How about volunteering to be your club's safety director? There is no better way to learn than to teach (well, that's one of the better ways).

Hope everyone has a safe new year.

PRESIDENT'S MESSAGE - CONTINUED

Summer Gem Fest. Jayne is already arranging food trucks and we are hoping this year will be the best ever!

See you at the meeting on the 21st.



FEBRUARY GENERAL MEETING MINUTES

Thursday, February 15, 2024
Bethany Park Shelter House
By Sharon Marburger, Secretary

The meeting was called to order at 7:09 p.m. by President Brett Jurgens. Twenty-four adult members, six juniors, and one guest were present.

ANNOUNCEMENTS:

Brett reminded the group of the Omaha Rock Swap to be held at the Grace Baptist Church in Papillion on February 24 from 11 a.m. to 4 p.m.

OLD BUSINESS:

The January meeting minutes were published in the Pick & Shovel. Vera Lyman moved to accept the minutes as printed, second by Donitte Stiles. Carried.

Vera read the Treasurer's Report. Sharon Marburger moved to accept the report as read, second by Mike Stiles. Carried.

We will be getting new fluorescent lights for the trailer in time for the show. Brett will finalize the order with Way Too Cool after the 18th of this month.

Mike Stiles and Jim Marburger will be weatherizing the club trailer immediately before the show.

Clyde Ogg reported on the various venues he has researched, looking for a new location for the Mid-Winter Swap. The Havelock Social Hall charges up to \$1575; the Firefighters' Union Hall charges \$1000 for a full day but has minimal tables available, we would have to supply most of the tables for the event; the County Extension Office is not an option; Park Center Hall is too expensive; Country Inn and Suites has a meeting room that might be a possibility, but more research is needed. Clyde will continue searching. It was pointed out that a location that will allow us to reserve a couple years in advance would be advantageous.

The Show Committee will be meeting on Saturday, February 17 at Hidden Gems (6 p.m.) to update the Show Operating Guidelines. The last update was in 2000. The By-Laws Committee will also be meeting, perhaps following the Show Committee meeting if there is time. Otherwise, they will meet electronically.

Vera reported that the Swap made of profit of over \$500. That was all the information available at this meeting. Contact Vera for details.

Brett pointed out that the Show is quickly approaching, with only one more meeting before the event. He will have volunteer sign-up sheets available after tonight's program. He asks that members sign up for ticket sales, club booth, club rock pile, the fluorescent booth, and juniors booth. Both days will be broken into two-hour time slots so one person doesn't get stuck doing one thing all day, which also allows everyone the opportunity to enjoy the show.

NEW BUSINESS:

The Science Fair is March 7. Brett is still waiting for a response from the organizers as to whether we can have a

booth. The Science Fair is on the same date of our normal Board meeting, so the meeting has been moved. The Board will decide the alternative date for the meeting.

Charles Wooldridge was awarded a Lifetime Membership. He has been a member since approximately 1988. (There is some dispute as to the actual year he joined, but the secretarial records show 1988.) Regardless, Woolly has been a member for a long time, and currently holds the 5th longest membership. Congratulations Woolly!

Rockhound of the Year Awards were given to Clyde Ogg and Brett Jurgens. Clyde, although a fairly new member, has stepped up to do some tasks that no one else wanted to do, such as scheduling programs and researching various things. He also has taken over running the Fluorescent Display at the Show. This is Brett's second year as President, and fourth year as Junior Leader. He also does outreach work and tries to keep the rest of us motivated and sharing the hobby.

Woolly moved to adjourn the meeting at 7:43 p.m., second by Gene Mulinix. Carried.

The program was presented by Shane Tucker, Highway Paleontologist. His presentation started by showing the juniors how to make a plaster cast, then proceeded to a presentation on Ashfall Fossil Beds in northeastern Nebraska. His talk was very informative and entertaining.



Photos by Donitte Stiles

Left to right:

Clyde Ogg, Rockhound of the Year

Charles "Woolly" Wooldridge, Life Membership

Brett Jurgens, Rockhound of the Year

On rare occasions, we have more than one deserving person for Rockhound of the Year.

TIDBITS FROM WOOLY

By Charles "Wooly" Wooldridge

My message will be short this month as I am recovering from shoulder replacement surgery. I was surprised to learn just how many everyday tasks require two hands. Try pulling up your pants, cutting a steak or opening a jar.

This time of year I begin the planning process for upcoming trips. We are looking to travel to Africa late summer. I ordered several books and maps thinking that while I am out of service I would study up on the best places to find gemstones. When the books arrived, to my dismay, I could not hold the books to read... ARGHGG!. All I can do is gaze out the window and dream I was on a gravel bar somewhere doing what I like to do best instead of constantly pulling up my TED Hose.

Get outside, enjoy these warmer winter days, and appreciate (if you can) being able to use two hands... .



SHOW COMMITTEE MEETING AND LONG-RANGE PLANNING & BY-LAWS COMMITTEE MEETING

Jayne Beer, Committee Chairman
February 17, 2024, 6:00 p.m.
Hidden Gems by The Jewelry Connection LTD
By Sharon Marburger, Secretary

Show Committee members Corey Beer, Brett Jurgens, Vera Lyman, Jim Marburger, Sharon Marburger, Clyde Ogg, Ed Ridge, Donitte Stiles, and Mike Stiles met on the date and time shown above, to update the club's Recommended Operating Procedures ("ROG" or "the document") under the leadership of Committee Chair, Jayne Beer. The ROG was last updated in the year 2000.

Members went through the document line-by-line to determine what needed to be updated. Since it had been 23 years since an update was made, many items had to be corrected, deleted, or added. All changes were unanimously agreed upon.

A redline copy will be presented to the Board of Directors for fine tuning, then presented to the general membership for approval.

This meeting adjourned at approximately 8:30 p.m.

Long-Range Planning & By-Laws

The members of this committee are Chairman Jayne Beer, Brett Jurgens, Sharon Marburger, Clyde Ogg, Vera Lyman, and Jim Marburger. The purpose of the meeting was to begin updates to the By-Laws. This task will take quite a bit of time and discussion, so it will be divided into two in-person meetings and discussions through instant messaging.

Changes to Article I of the By-Laws before the meeting adjourned, were 1) to make the process of becoming a new member easier; and 2) to propose removal of the late fee. The latter required a motion from Brett "to strike the existing text in Section 2(e) and replace it with, 'Membership not paid by January 31 of each year will be suspended until such time as dues are paid. Delinquent dues may cause a member to not be listed in the annual Who's Who.'" Clyde gave a second to the motion which carried with 5 yes votes and one abstention. Further conditions to this language change, as well as reviewing the remaining By-Laws, will be made at the next meeting.

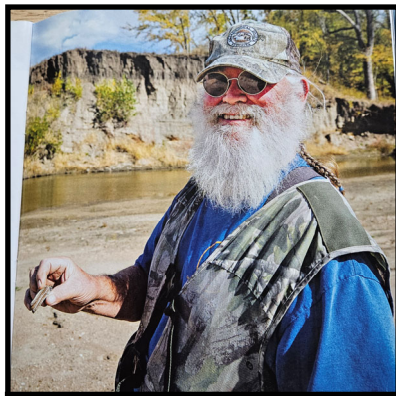
This meeting adjourned at 9:00 p.m. The group will reconvene in person following the March Board meeting.

**Are you ready
for the Show?**



Caption says: Corey Beer of Lincoln holds up a 4,000 to 8,000-year-old knife he just discovered along a gravel bed in southeastern Nebraska.

A very nice article and pictures by Renae Blum was published in Nebraskaland magazine. Photos were borrowed from said publication.



Caption says: Charles "Wooly" Wooldridge of Lincoln displays an Ice Age bison tooth he just found along the Big Nemaha River in southeastern Nebraska.



Caption says: Mike & Donitte Stiles of Lincoln hold a rock containing fossils (left) and a fossil bone (right) that they discovered on a gravel bed. It was their first time rockhounding.

FRUGAL MINERALS

By Eric Fritsch

When I was in college, I would go with friends/fellow students to the Tucson Gem and Mineral Show. We had a tradition where we would compete to find the best specimen for \$5 or less. There was no prize, only bragging rights and, of course, lots of discussion.

With dealers renting spaces in Tucson for \$64 per square foot, it is hard to find \$5 specimens anymore and \$5 in the mid-late 1980s is worth about \$15 today. So, I guess by today's standards the challenge is to find minerals for \$20 or less.

There are plenty of good specimens out there for \$20 or less if you know where and how to look. Bob Jones, of Rocks and Minerals Magazine fame, wrote a book called *The Frugal Collector*, which is pretty good but digresses into a reference book about halfway through. Below I'll share some methods I have found for finding Frugal Minerals (\$20 or less).

Know

Knowledge is key. One has to know what the minerals are and what they sell for. This knowledge takes a long time and can only be gained by attending a lot of shows, symposiums, books, and other venues, and knowing something about mineralogy. You need to know about the mine it came from, how much was produced as specimens, and all the other factors that go into establishing a value for a specimen.

Look quickly and be mobile

So many collectors lollygag when looking at minerals. You need to look and either buy or move on. It helps to be early to show and stay late, and see as much as you can. You need to quickly ascertain what is junk, and what is legit. Within a few seconds, I can figure out if a dealer is overpriced or their inventory doesn't interest me. There is often time to come back later. With thousands of dealers offering hundreds of specimens, you can't see them all.

Know who the discounters are

Certain dealers are set up more for wholesaling or selling cheaply. The nice specimens in the fancy display cases are nice to look at but keep in mind they take 98% of it home with them. Before I go to a big show, I know what dealers I am going to look at first and in what order. Dealers who are closer to the source are generally cheaper. Some dealers get their specimens from old collections and move the inventory fairly quickly to recoup costs. It also pays to look though the extra flats that dealers sometimes bring.

Buy imperfection if it doesn't bother you

I'd rather have a large imperfect specimen than a nearly perfect small specimen. A ding or two takes value (and price) away from the specimen. Many dealers discount very large specimens because they have a harder time selling them.

Buy in bulk

If you can buy multiples of a specimen, you often get a better price. I have often bought a flat of minerals for what I

could buy 1 or 2 specimens for. If possible, you can sell off the rest, often paying for the one or two specimens you selected from the lot. I have bought rocks in lots where I gave away one-third, sold one-third as wholesale, and kept one-third as individual specimens. I have also kept bulk lots and absorbed them into my collection as a whole.

Don't get hung up on color

So many collectors, especially today, are uber-attracted to color. Very fine white, black, brown, or grey minerals are often undervalued.

Buy small

Sometimes nice minerals are found in small sizes. Thumbnails or micromounts are a way of collecting minerals often without the huge price tag.

Negotiate

A dealer is unlikely to cut you a deal on a single \$20 specimen. If you are buying multiple specimens, you might be able to negotiate a better deal. Cash is often king, and many dealers are more apt to cut deals at the end of a show.

Like what you collect

Only buy or collect what you like. Everyone is out there trying to sell you something. If you like pyrite but don't like fluorite, then don't buy fluorite. Only buy a specimen because you like it; you want to have it.

Avoid the hype

Avoid any sort of hype going on about the mineral. The dealer may tell you fanciful stories about the specimen or display it in a cotton-lined box like the Queen's Jewels. Sometimes it helps to take it out of the box and examine on its own. Figure out why it is that you want it. Some dealers will also describe specimens as keystone or half price, but the specimens are already 2-3 times their normal price.

I once bought a \$5 specimen when I was making \$0.25 per week allowance in 1977. I had real buyers' remorse trading 20 weeks of allowance for a rock. I got books on minerals, read all I could, joined a club, attended mineralogical symposiums, all which eventually led me to becoming a geologist. I still have that \$5 rock and it's worth a bit more today (estimated value \$35: \$5 in 1977 is worth about \$25 today with inflation). It paid off more than realized.

BENCH TIPS BY BRAD SMITH

TEMPLATES

Whenever I have to make more than 2-3 exact copies of a sheet metal component, I think of making a template. Templates let me easily draw the shape of an item to cut out.

Art stores or online sources like cooltools.us/ and kingsleynorth.com/ sell templates for common shapes like circles, ovals, hearts, etc. but for nonstandard shapes, I make my own out of a scrap of sheet plastic or sheet metal. My

(Continued on page 7)

BENCH TIPS - CONTINUED

(Continued from page 6)

preference is brass. I carefully lay out the shape using a steel ruler, a set of dividers, a scribe, and a fine center punch.

One example is the brass template in the pic below that lets me quickly trace the design of ginko leaf earrings onto silver sheet. Another is the nickel template which makes it easy to drill a pattern of holes for pin inlay into wooden handles.



RAISING A CABOCHON

When a cabochon sits too low in a bezel, the bezel hides a lot of the stone. The solution is to either sand down the bezel height or boost up the stone. But if you choose to raise it up, the question is what is the best material to use?

I was taught to use fine sawdust but now think that might be a problem when used in rings. I reason that rings will frequently get wet, which would cause the sawdust to swell in size and push the stone against the bezel. Then when the sawdust dries out, the stone would be a little loose.

In any case, I now prefer to insert a flat sheet to boost up my stones. It can be a scrap of metal or some plastic from product packaging or old credit cards. In either case, just cut a piece to loosely fit into the bezel and drop in the stone (with some dental floss) to check its height.

TESTING FOR SILVER

Often you need to identify some of those unknown "silvery" pieces of metal in the bottom of the toolbox or some piece of old jewelry that is not hallmarked. Is it silver or is it something else?

Of course, if you need to know exactly what you have, it's best to send your metals off for refining. But inexpensive silver testing solutions can be used to help distinguish higher silver content alloys from alloys that have the same appearance but with little to no silver content, like German Silver or Nickel.

I purchased a half-ounce bottle of JSP Silver Testing Solution #GT41. It's not a rigorous analytic test, but it lets you know if you're on the right track. And it's inexpensive. Mine was only \$3.

With a fresh solution you have an instant reaction after applying it to the metal being tested. The procedure is simple—apply a small drop and watch for a color change. Note that

the acid will leave a slight mark, so choose a spot that is out of the way or will be easy to polish.

If you suspect the object is silver plated, you should file a little notch somewhere inconspicuous to expose what metal is below the surface. Otherwise, all you test will be the surface plating.

Here's the reaction I got when testing various materials:

Fine silver	Red/Orange
Sterling silver.....	Brick Red
80% silver 20% copper.....	Dark red changing to gray
Brass	Yellow changing to blue
Nickel	Gray-green
Copper	Yellow changing to blue
Steel	Black
Stainless Steel.....	No color change

Caution - If you do any of this testing, know that you are handling a reasonably strong acid. The GT41 label says it includes nitric acid and potassium dichromate.

Wear safety glasses.

Do not get any testing solution on your skin.

Use a solution of baking soda and water to neutralize acid.

Wash and clean up well when you're done.

See Other Tips in my Smart Solutions for Jewelry Making Problems

<http://amazon.com/dp/B0BQ8YVLTJ>

JUNIORS

by Brett Jurgens, Junior Leader



Hello Juniors. A big thank you to Shane Tucker for his hands-on activity with the juniors. And a thank you to Wooly for donating horn coral and Corey Beer for donating ice age bison teeth to add to your collections.

The focus for our next meeting will be show prep. At the February meeting we started a sign up sheet for volunteering at the show on April 6th and 7th. We need help running the junior booth as well as other spots in the show. Our Annual show is our club's biggest event. It is the club's best exposure to the public and our biggest fundraiser. Please sign up to help out. I will have a treasure chest at the show with prizes based on how long you volunteer during the show. Some of these prizes are coming out of my (and others) personal collection, so consider this a true incentive to help your club out.

I am currently in the works of setting up several local field trips for both the club and juniors. I am hoping to have dates set by show time so we can advertise these trips as an encouragement for people to join the club.

Please bring your specimen box to our next meeting on Thursday, March 21st. I'll send you home with a new specimen for your collection. See you at the meeting!

WIRE WRAP CLASS BY NYKKY

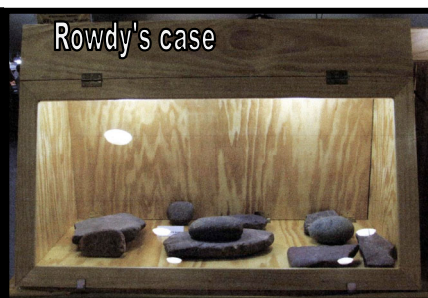
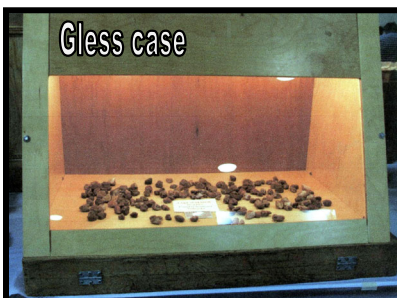
By Sharon Marburger

We had yet another wire wrap/wire weave class taught by Nykky on February 22 at Hidden Gems by The Jewelry Connection. Nykky charges a small fee for her time and expertise, and for stones that are provided if you don't bring your own.



This month, the lesson was making a pendant by wrapping a stone with the Tree of Life. Twelve students participated. As always, each student put their own flair on the project so no two finished products were the same.

It was another successful class. If you haven't signed up for and attended one of these classes, please consider doing so. In addition to gaining knowledge and a skill, they are a lot of fun with chatter and laughter. Thanks for teaching, Nykky!



SHOW PREPARATION

Promote the Show!
Hand out postcards
or show flyers
Talk about it with
everyone you meet

.....
Sign up for a 2-hour shift
to work a booth or area

.....
Plan to help with setup
on Friday, April 5

.....
Plan your display
Have liner material
for the case and
identification cards
for what you display

.....
Reserve a case from Brett
Let him know what style
(shown bottom left)
It would be handy to have
Windex, paper towels, and
tools for case setup

.....
If you are using your own case,
let Brett know its dimensions and
get your space assignment
Check your light bulbs!

.....
Get out your T-shirts, Vests,
and club name tags

TRIP TO TUCSON

By Sharon Marburger (photos by Beer Family)

Some of us were lucky enough to get to go to the southwestern United States, namely Arizona, to attend the Tucson Show.

While I couldn't squeeze any words out of the Beer Family, their pictures tell quite a story.



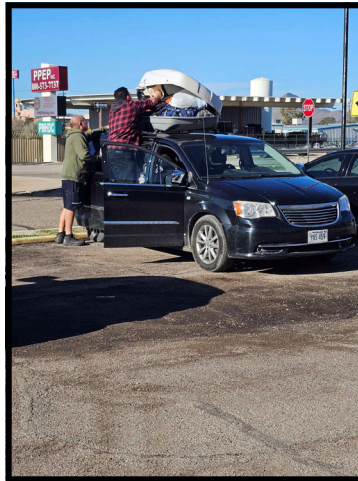
Corey's happy place



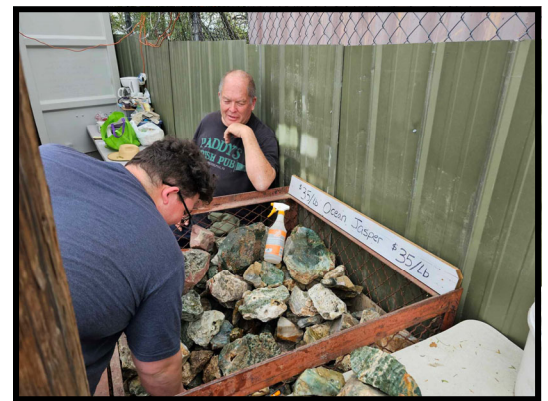
Brian & Corey



How do they make those?



Ack! We need more room!



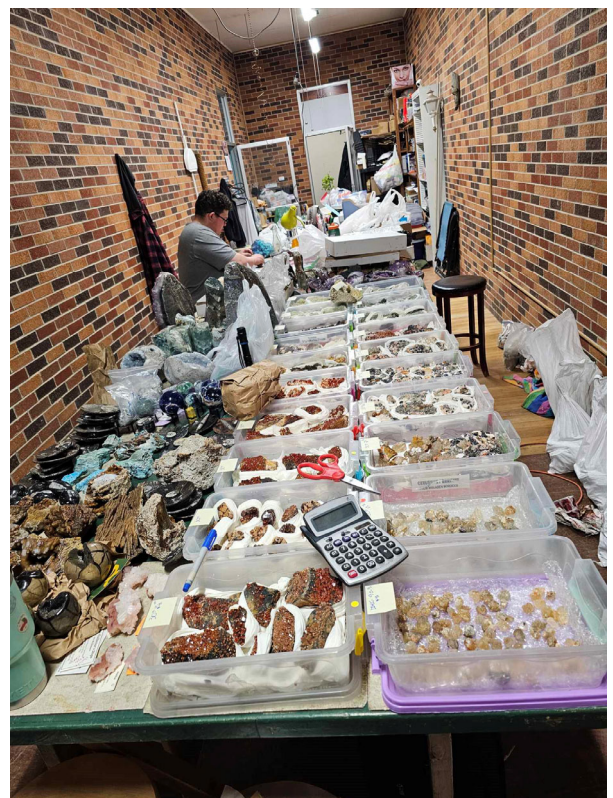
This looks more like Corey's happy place!



Those Beers! They push it to the limits



Stopped off at Way Too Cool



Just a portion of what was brought home



Where are we going to put all the stuff we bought at Gem World?



Headed home (You okay back there, Corey?)

April 6 & 7, 2024

Nebraska's Geologic Treasures

Lincoln Gem & Mineral Club's 64th Annual Show!

<http://www.lincolngemmineralclub.org>

FUN FOR THE WHOLE FAMILY

Youth Booth

Dealers

Exhibits

Demonstrators

Nebraska Gem Dig (outside)

Fluorescent Display

Club Rock Pile (inside)

Mineral Identification



April 6 & 7, 2024

Admission:

\$6 per adult

\$11 2-day pass

Children 11 and under

free with paid adult

**\$1 off paid admission
with a can donation to
the Food Bank!**



Sandhills Global Event Center

Ag Society Hall

84th & Havelock

Lincoln, Nebraska

Saturday, 9 a.m. to 5 p.m.

Sunday, 10 a.m. to 4 p.m.

You may pick up Show post cards (to distribute to friends and businesses) at Hidden Gems, 3227 S. 13th St., Lincoln (Indian Village Shopping Center) or contact Jim Marburger, 402.430.6703.

We have lots of post cards and need your help in distributing them. Remember, advertising is what makes our show a success!

2025 MID-WINTER SWAP COMMITTEE

Chairmen:..... Jayne Beer, Sharon Marburger
Advanced Reservations:..... Sharon Marburger
Club Booth/Rock Pile
Finance & Admissions: Vera Lyman, Sharon Marburger
Floor Chairman: Jayne Beer
Insurance Vera Lyman, Jim Marburger
Publicity & Promotion: Jayne Beer, Jim Marburger
Web Master: Sharon Marburger
Youth Activities: Brett Jurgens

2024 SHOW COMMITTEE

Theme: Nebraska’s Geologic Treasures
Chairman: Jayne Beer
Dealers & Demonstrators: Vera Lyman
Displays: Brett Jurgens
Event Center Liaison Vera Lyman
Finance/Ticket Sales: Jim Atkins, Vera Lyman
Floor Chairman: Corey Beer, Jayne Beer
Fluorescent Booth: Clyde Ogg
Forms Sharon Marburger
Indoor Rock Pile: Jim & Sharon Marburger
LGMC Club Booth: Charles Wooldridge
Nebraska Gem Dig: Charles Wooldridge
Plants: Ed Ridge
Publicity & Promotion: Jim Marburger
Raffle Gene Mulinix
Ribbons & Recognitions: Sharon Marburger
Security: Vera Lyman
Show Flyer & Printed Program Sharon Marburger
Youth Activities: Brett Jurgens

2024 SUMMER GEM FEST COMMITTEE

Chairmen: Corey Beer, Jayne Beer
Advanced Reservations: Sharon Marburger
Finance & Ticket Sales: Vera Lyman, Gene Mulinix
Floor Chairmen: Corey Beer, Jayne Beer
Insurance Vera Lyman, James Marburger
LGMC Rock Pile: Sharon Marburger
Publicity & Promotion: Jayne Beer, Jim Marburger
Web Master: Sharon Marburger
Youth Activities: Brett Jurgens

ADVERTISING INFORMATION

Advertising by rock / hobby business or interest is permitted with the approval of the Board of Directors. Contact the Editor with your proposed ad. The rate is set at \$20.00 per full page; \$10.00 per 1/2 page; \$5.00 per 1/4 page (minimum) per issue, paid in advance to the Club treasurer. Ads will be placed throughout the newsletter as space permits.

STANDING COMMITTEES

Audio/Visual:
Clyde Ogg
Audit:
Jayne Beer, James Marburger, Clyde Ogg
Christmas Party:
Edward Ridge
Door Prizes:
Corey Beer, Brett Jurgens, Charles Wooldridge
Facebook:
James Marburger, Jayne Beer, Brett Jurgens
Field Trips:
James Marburger
Gem Fest (Summer) 2024:
Jayne Beer & Corey Beer
Historian:
Sharon Marburger
Membership Record:
Edward Ridge
MWF Liaison:
Vera Lyman
Programs:
Clyde Ogg (Wooly & Brett assisting)
Property:
James Marburger
Recognition/Awards:
Vera Lyman, Sharon Marburger
Refreshments:
Vera Lyman
Show - 2024:
Jayne Beer
Summer Gem Fest:
Jayne Beer
Swap (Mid-Winter) 2025:
Jayne Beer & Sharon Marburger
Website:
Sharon Marburger
Youth Activities:
Brett Jurgens

MEMBERSHIP INFORMATION

Membership dues for the Lincoln Gem & Mineral Club are as follows:

- Adults (age 16 and over) - \$20 per year or \$30 per couple (within the same household)
- Juniors - \$3 per year (with a responsible adult)

All new memberships must be accompanied by a written application. Prospective members must gain Board approval and attend one regular meeting or club event before paying dues. Applications are available on the website:

<https://www.lincolngemmineralclub.org/about/membership>, or you may contact Treasurer Vera Lyman for a printed copy.

Mail Exchange Newsletters to:
Lincoln Gem & Mineral Club, Inc.
P.O. Box 5342
Lincoln, NE 68505-0342



Or e-mail newsletters to:

A color version of the Pick & Shovel is available at:

<http://www.lincolngemmineralclub.org/index.php/newsletters/current>

PICK & SHOVEL

Hidden Gems by The Jewelry Connection Ltd.

Indian Village Shopping Ctr.

3227 S. 13th St., Lincoln (next to LAUNDROMAT)

Corey Beer - Lapidary
402.890.9155

Lapidary Classes

(Stone Cutting)

\$75 for 5 3-hour classes

Choice of session:

Saturday 1 p.m. - 4 p.m.

Sunday 1 p.m. - 4 p.m.

If you can't attend a session,
let us know by Friday noon, or
you will be charged as if you
were there.

Drop-in students welcome
when openings are available,
\$15 for 3 hours.

Check Lincoln Gem and
Mineral Club Facebook page
for openings.

Jayne Beer - Jeweler
402.890.3307

Silversmithing Classes

Tuition: \$150 plus \$30 supply deposit

Choice of Tuesday or Wednesday

7:00 p.m. - 10:00 p.m.

Tuesdays

Session 1: Jan 9—Feb 27

Session 2: Mar 5—Apr 23

Session 3: Apr 30—Jun 18

Session 4: Jun 25—Aug 13

Session 5: Aug 20—Oct 8

Session 6: Oct 15—Dec 3

Wednesdays

Session 1: Jan 10—Feb 28

Session 2: Mar 6—Apr 24

Session 3: May 1—Jun 19

Session 4: Jun 26—Aug 14

Session 5: Aug 21—Oct 9

Session 6: Oct 16—Dec 4

**Contact: Jayne Beer 402-890-3307 or look up "Hidden Gems by
The Jewelry Connection LTD" in Facebook and send message**