



The Official Publication of the Lincoln Gem & Mineral Club, Inc.

THE PICK & SHOVEL

In association with



The Midwest Federation of
Mineralogical and
Geological Societies



The American
Federation of
Mineralogical Societies

The purpose of this corporation shall be to study, promote an interest in, and disseminate knowledge of lapidary and various Earth Sciences including but not necessarily limited to Geology, Paleontology and Mineralogy. It shall be a particular purpose of the corporation to provide education in these fields to its members and the general public, especially to youth and student groups.

GENERAL MEETINGS

Third Thursday of the Month, except for January (3rd Sunday), December (1st Sunday), and summer break (June, July, August).

New Meeting Times: Juniors meet at 6:15 p.m.
Adults meet at 7:00 p.m.

Next meetings: **November 16, 2023 (Annual Business Meeting)**
 December 3, 2023 (Christmas Party)
 January 21, 2024 (following Mid-Winter Swap)

BOARD MEETINGS

Until further notice, Board Meetings will be held at 6:30 p.m. on the first Thursday of each month.

Next Board Meeting:
Thursday, December 7, 2023 at 6:30 p.m.
Vera Lyman's Residence

Persons of general membership are invited to attend Board meetings and offer agenda items.

2023 BOARD OF DIRECTORS

President: Brett Jurgens, 402.850.3256, quartz89@aol.com

1st Vice-President: Corey Beer, 402.466.6628

2nd Vice-President: Jayne Beer, 402.890.3307, JBeer60070@aol.com

Treasurer: Vera Lyman, 402.464.6089

Secretary: Jeff Kubitz, 402.540.9395, jkubitz@neb.rr.com

Board Member: James Marburger, 402.430.6703, james.marburger@outlook.com

Board Member: Sharon Marburger, 402.429.3323, lgmc.editor@outlook.com

Board Member: Ed Ridge, 402.805.8248

Board Member: Charles Wooldridge, 402.975.0416, charles.wooldridgeii@gmail.com

2023 LONG RANGE PLANNING & BY-LAWS COMMITTEE

Jayne Beer, Chairman

1 year: Vera Lyman & Jim Marburger
2 years: Jayne Beer & Brett Jurgens
3 years: Sharon Marburger & Clyde Ogg

2023 NOMINATING COMMITTEE

Jayne Beer, Chairman

1 year: Jim Atkins & Corey Beer
2 years: Jeff Kubitz & Vera Lyman
3 years: Jayne Beer & Brett Jurgens

ANNOUNCEMENTS & CLUB FUN

ATTENTION!!!!

We have a club member with a severe peanut allergy.

Please bring peanut-free foods to Club functions.

Please provide any nut information on your foods.

Follow us on Facebook:

<https://www.facebook.com/groups/223555904325876>

Please send your hobby-related photos with captions or explanations for publication in the Pick & Shovel. Field trips, lapidary projects, fossil projects, metal projects, wire wrapping, tumbling, or any other activity of interest to the club. Your project may inspire someone else. Send via email (lgmc.editor@outlook.com) or via Facebook Messenger to Sharon Marburger (<https://www.facebook.com/mamamar7880>).

NOVEMBER BIRTHDAY GREETINGS

Topaz

- Patricia Grimit
- Nick Lytle
- Gene Mulinex
- Carrie Noonan
- Clyde Ogg



PICK & SHOVEL STAFF

PUBLISHER:

Lincoln Gem & Mineral Club, Inc.
P.O. Box 5342
Lincoln, Nebraska 68505

EDITOR:

Sharon Marburger
E-mail: lgmc.editor@outlook.com

CIRCULATION:

Vera Lyman;
402.464.6089
Sharon Marburger;
402.429.3323

DEADLINE:

Last Sunday of the month.

NOVEMBER PROGRAM

Mineral and Rock Identification Hands-On Activity by Dr. Robert F. Diffendal

Dr. Robert F. Diffendal, Jr., was born and raised in Hagerstown, Maryland. He received degrees in geology and paleontology; has taught geology and biology courses; is now Professor Emeritus at UNL and a volunteer Curator of Invertebrate Paleontology at the University of Nebraska State Museum; and is a Nebraska Licensed Professional Geologist.

Dr. Diffendal has received many honors and has produced many articles, guidebooks, maps, and other works on the geology of Nebraska. He has given talks and has led field trips for many thousands of Nebraska children and adults and for many people from other states and countries. He has also presented to the Lincoln Gem and Mineral Club on many occasions.

Bring your specimens you would like to have identified. Dr. Diffendal will do his best to give you an accurate identification. There may be some cases that he cannot provide information.

November Rock Party

Sunday, November 19, 2023

5:00 p.m.

Hosted by Hidden Gems by
The Jewelry Connection Ltd.
3227 S. 13th Street

In Indian Village Shopping Center

Comfort Foods & Soups

Bring your favorite comfort food or soup.

Bring your projects to work on. The Club lapidary equipment is housed at this location and usage is free at this event. Instructors will be available. Take this opportunity to earn your equipment certification.

And above all else, come have fun!

(The November Rock Party is hosted each year by the Beers, in honor and memory of long-time club member, the late Roger K. Pabian.)

Slate of Nominees for 2024 Board of Directors

Election on November 16, 2023

President: Brett Jurgens

1st Vice President: Corey Beer

2nd Vice President: Jayne Beer

Secretary (Pick one): Jeff Kubitz

Sharon Marburger

Treasurer: Vera Lyman

Board (Pick 4):

James Marburger

Clyde Ogg

Mike Stiles

Charles Wooldridge

President Brett will be asking for two volunteers to serve on the Long-Range Planning and Bylaws Committee and two volunteers to serve on the Nominating Committee. These are easy positions. Get involved!

PRESIDENT'S MESSAGE

By Brett Jurgens

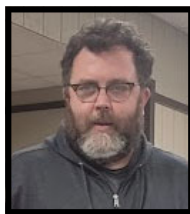
Hello.

I have been amazed at how quickly this year has gone by. Weeks quickly turn to months, and months to seasons. The plus side to this is the time between rock club events just fly by. Upcoming events include our regularly scheduled meeting on Thursday, November 16th. Jayne Beer is hosting this month's rock party at her shop on Sunday, November 19. This rock party is one of my favorites with the theme of soups and comfort food. Members will also be able to use the club equipment and try their hand at cutting and polishing rocks. Our December meeting is not the typical third Thursday because everyone's schedules get too busy being that close to Christmas. Instead, the meeting is on Sunday, December 3rd. This is our annual Christmas party and potluck. Be ready to eat some delicious food, play rock bingo and win some prizes! If you'd like to participate in the gift exchange, please bring a hobby related gift (\$10 value) for the blind gift exchange. The last club event of this year will be the December rock party at the Marburgers' home in Hickman on December 16th.

The calendar quickly flying by also means that some of our main events are quickly approaching and will be here faster than you realize. Sunday, January 21st is our Mid-Winter Swap, followed by our 64th Annual Gem and Mineral Show on April 6th and 7th. Planning is already underway for both.

There are some changes to the Mid-Winter Swap. To avoid conflict with the Tucson Show, the date has been changed to the third Sunday. With limited space at Bethany Park Shelter, this year swappers will be able to pre-register for their table space. Sharon Marburger is spearheading this and registration, space selection, and payment will be taken through our website (except for those making advance reservation at the Christmas Party). Club members will be able to sign up for space ahead of the general public at our Christmas party on December 3rd. Note that reservations are not complete until fee and form is received by Sharon.

Our 2024 show's theme is "Nebraska's Geologic Treasures". As always, I am advocating for us to have as many displays as possible. I feel it really adds to the show,



and we get many compliments on the quality and number of displays. With our increasing number of displays, we are in need of locating some more display cases. If you have some you could bring to the show, or are interested in getting rid of, please let me know. We are also in need of more volunteers at the show. Many of our club stations at the show are staffed by club members who get stuck at that position for the entire show. I would like for everyone to be able to walk around and see the show, and/or take a break. At future meetings we will be asking volunteers to sign up for different shifts at our show.

JUNIORS

by Brett Jurgens, Junior Leader

Hello Juniors. The days are definitely getting shorter, and the weather cooler! I now often find that it is dark by the time I am off work. This does, however, give me a chance to organize and polish some rocks while staying warm indoors. I have already started to think about what I am going to display at the upcoming rock show in April. Juniors, I'd like you to be thinking about a display as well. So often displays showcase the culmination of years of collecting. It would be nice to showcase a collection in the beginning, as well as show off some of the specimens you receive as juniors. I have some smaller display cases that would work perfectly.

Our next meeting is Thursday, November 16th. We will begin working on the requirements to earn the Rock and Mineral Badge through the Future Rockhounds of America program. The general meeting program will be on mineral identification. So please stick around for that as well. Please bring your specimen kits as there will be a specimen to take home.

Sunday, December 3rd is our club Christmas party. It is a potluck with the club providing fried chicken. We welcome your families to attend as well. For entertainment, we will play rock bingo (lots of prizes). We won't have a lesson but do bring your specimen kits as there will be some special gifts for you to pick out. We also have a blind gift exchange. If you would like to participate, please bring a hobby related gift in the \$10 range. The Christmas party is one of my favorite club events. I hope to see you there.





LQMC
Christmas Party
with Potluck Supper, Awards,
and Rock Bingo!

5:00 Youth Group Activities & Adult Social

**6:00 Potluck Supper (club provides fried chicken
and beverages)**

7:00 Short Meeting and Awards Ceremony

!! Rock Bingo !!

If you wish to participate in the gift exchange, bring an inexpensive (\$10 max) gender-neutral gift for exchange

Bingo Prize Donations Welcome



If you plan to have a table at the Mid-Winter Swap, please see Sharon Marburger at the Christmas Party to reserve your spot. As a club member, you get first choice of tables. Half table is \$10; full table is \$20. Maximum of one full table per Swapper. Sharon will have a floor plan with numbered tables, swapping rules, and reservation forms at the party.

Happy Thanksgiving

LGMC BOARD MEETING MINUTES

by Jeff Kubitz, Secretary

Thursday, October 5, 2023 at the Lyman Residence

Meeting called to order at 6:50 p.m. by President Brett Jurgens.

Roll Call

President:	Brett Jurgens	Present
1st Vice Pres.:	Corey Beer	Present
2nd Vice Pres.:	Jayne Beer	Present
Treasurer:	Vera Lyman	Present
Secretary:	Jeff Kubitz	Present
Board:	Charles Wooldridge	Present
	Sharon Marburger	Present
	James Marburger	Present
	Ed Ridge	Present
Guests:	Mike & Donitte Stiles	

The minutes of the September meeting were distributed. Jim moved to accept the minutes, second by Sharon. Motion carried.

The Treasurer's Report was reviewed. Wooly moved to accept the report, second by Jeff. Motion carried. Wooly asked how the club stands financially and Vera said good.

Announcements:

Wooly reminded everyone about the October 15 Rock Party to be held at his house, beginning at 5:00 p.m..

Loup Valley will be holding their show October 21 and 22 at the Methodist Outreach Center.

Wooly announced that a reporter for NebraskaLand magazine is planning to do a story on rock hunting in Nebraska. Wooly will lead a field trip to Nemaha River areas around October 15.

Old Business:

Brett said he will buy the projector he's been looking at. However, it's not on sale this week and he would like to get it on sale. The price is \$700.00 on sale.

A larger screen is needed. They run \$150 to \$170 on Amazon. Wooly moved to buy a new screen at not more than \$250. Eddie 2nd and motion passed.

UV lights. Way Too Cool still needs to get back to Brett, but that is the place we will get them.

Wooly suggested the old lights we can sell to members of the club and Brett thought we could keep them as back up lights. Both Brett and Wooly suggested we can have a silent auction for them at our meetings.

Jim reported that all of the lapidary class equipment has been moved out of the Auld Pavilion. The key will be returned to the Parks Department.

New Business:

Wooly will have a display on Saturday at the Prairie Hill Center located south of town on Highway 77.

Jayne stated she would like to see the cost figures on renting the Auld Pavilion for future Mid-Winter Swaps to see if it feasible. Auld costs \$1,200 for one day and Bethany is \$600 for one day. Will increasing the number of swappers or number of tables per swapper offset the additional venue cost? We need to determine if Auld has tables and if there is a separate rental cost. We need to know square footage, also.

Advanced reservations for the 2024 Mid-Winter Swap will be offered first to club members during the Christmas Party. The public can make their advanced reservations on the website beginning December 4, 2023. Bethany Park Shelter House is reserved for 2024. Brett suggested getting a square reader, but credit card companies will still charge a fee.

Vera asked when Brett would get the projector and screen, he said next week and the lights will be later. Brett will try to get the projector at Best Buy and the screen at Amazon. The discussion was around which size screen was best for our club. 3 X 4, 16 x 4 or 16 x 9. Brett and Clyde thought 3 x 4 for what we need it for.

Jim showed us a business card from the Omaha Club which had a rock taped to it. Wooly thought the rock on the card made it difficult to stack and that it didn't add much. Brett thought the same, and said kids like the free rock. Sharon said we can give the kids a rock.

Brett mentioned Lincoln had display cases at our show and people liked them and said Omaha might not have these at their shows anymore. Lincoln members had three of the seven cases at the Omaha show.

A discussion about what would make the show entry easier and faster. Brett said Omaha had 2 Square Terminals and 40% of the people used them. The Square Terminals can record all types of payment. Eddie suggested having better Silent Auctions.

Brett mentioned the Kansas City Show will be March 10th. He got a cabin at Basswood Resorts, and thinks maybe we could have a field trip to the show, utilizing the Resort.

Plans for a free Activity Night at Jaynes's shop were discussed. Wooly moved, and second by Sharon, to hold the Activity Night from 3 p.m. through 9 p.m. on January 27, 2024. Motion passed. Attendees could earn their equipment certification at this event.

The Rock Swap will be Sunday, January 21, 2024.

Jayne is hosting the November Rock Party. Jim and Sharon will host December.

Jayne thought she would check to see if UNL, SCC, and the Museum would accept ads for classes.

Wooly moved for adjournment, Sharon 2nd. Meeting adjourned 8:07 p.m.

GENERAL MEETING MINUTES

October 19, 2023, Bethany Park Shelter House
by Jeff Kubitz, Secretary

Meeting called to order at 7:03 p.m. by President Brett Jurgens. There were 27 members and three guests in attendance - Mark & Cindy Sherer and Owen (junior). Welcome new members Charisse and Ari.

Minutes were published in the Pick & Shovel. Motion by Wooly to accept the minutes as published, Donitte Stiles second. Motion passed.

The Treasurers Report was read by Vera Lyman. Jim Marburger moved to accept the report, second by Clyde Ogg. Motion passed.

Old Business:

Jackie thanked everyone who attended the October Rock Party her and Wooly's residence.

The November Rock Party will be held at Hidden Gems on the 19th at 5:00 p.m. Comfort foods and soup will be the theme.

The December Rock Party will be held at the Marburgers in Hickman on December 16 at 5:00 p.m.

The club Christmas Party is scheduled for Sunday, December 3 at 5:00 p.m. The club will provide fried chicken and beverages; members to bring a hot dish and a cold dish to share.

The date for the 2024 Mid-Winter Swap has been changed to the third Sunday, January 21, 2024. Future Mid-Winter swaps will most likely be held on the third Sunday of January, to avoid conflict with the Tucson show. As always, swappers are allowed one table. Members will be given the opportunity of first choice at the Christmas Party. Shortly thereafter, the information sheet and registration form will be posted on the club's website.

Vera announced that name tags will be ordered in February. We get a lower cost with volume ordered. At the moment, each tag is approximately \$14. It is in the shape of Nebraska with the club name and the member name. If hanging bars are needed, they are approximately \$7. The name tags will be here in time for the Show.

New Business:

Wooly will be leading a Nemaha River area field trip on Monday, October 23. This is to give a reporter from NebraskaLand magazine some experience before writing her article on rock hunting in Nebraska. Attendees will meet at Casey's in Pawnee City at 9:30 a.m.

Show Business:

The theme for the 2024 show is "Nebraska's Geologic Treasures". Vera will be mailing out the Dealer contracts next week. Brett plans to have a more in-depth volunteer signup sheet for the show. Now is the time to start planning your displays. Last year we had 50.

Wooly moved to adjourn the meeting to Halloween costumes and presentation by Eric Fritzs, second by Norm Boettcher. Meeting adjourned at 7:17 p.m.

The Halloween costumes were: Citrine (Wooly); Bubblegum Agate (Jim M.); Bacon Agate (Sharon); Petrified Wood (Jackie); Tiger Eye (Alex); Turquoise (Donitte); and Taconite (Brett).

Clyde Ogg introduced the program, Madagascar Mineral Adventures by Eric Fritzs. The trip was in association with the MinDat organization in 2023. It was an informative and entertaining presentation.

DON'T FORGET THE ROCK PARTY!



ACTIVITY NIGHT

By LGMC Board

The Board has scheduled a club activity night for Saturday, January 27, 2024. It will be held at Hidden Gems by The Jewelry Connection Ltd. from 3:00 p.m. through 9:00 p.m. (or later, if needed or wanted).

This will be your opportunity to use the club lapidary equipment **free of charge!** You can also earn your equipment certification, which will allow you to use the equipment, without supervision, at any time Hidden Gems is open for business.

And don't forget that Hidden Gems also holds lapidary classes on Saturdays and Sundays. (See ad on last page.) You can also earn your equipment certification by attending these classes.

As a reminder, club members may normally use the equipment for the same price as lapidary class members - \$5.00 an hour. You can't find a better bargain in town!

This event is not to be confused with a Rock Party; it is solely to provide **FREE** and guided lessons on the lapidary equipment. This group loves food, so there will probably be snacks available. If you would like to contribute, you may bring simple finger foods.

Be there, or be a Leavarite.

BAD MINERAL SCIENCE ON THE INTERNET

By Eric Fritzsch (as published on the LGMC Facebook feed)

The internet was designed to disseminate information and from it's beginning, proposed a wonderful world where information was only a click away. The promises of a smarter tomorrow looked fantastic, however the reality is that the internet often has the opposite effect. The internet has influenced people into making bad political or voting decisions, bad financial decisions, bad romance decisions, etc. Sometimes these are carefully constructed operations and sometimes they are because misinformed individuals can write and put out whatever BS they want. A dangerous tool of the internet and social media is the copy and paste button where BS gets relayed over and over again, like a stupidity copier. This even happens in the rock and mineral world very often.

A recent article that was copied and pasted to our fine forum is a typical example of such nonsense. It's not the only recent article that has been terribly wrong. So many of the copy and paste articles are garbage and make us stupider for reading them. I'm simply using this most recent copy & paste article as an example. This article contains so many errors and problems, it is hard to dissect them all.

Selenite, satin spar, desert rose, and gypsum flower are crystal habit varieties of the mineral gypsum.

The first couple sentences don't start out too bad and the author likely had a book or perhaps even the internet to assist them. In the first sentence they talk about gypsum flowers, which are features in caves, mines, or sometimes found in vugs. The term is plural and should be gypsum flowers, not flower—but this is a minor mistake. Gypsum flour (*sic*) is finely graded gypsum. The article is broken down by sentence in italics, with a critic in normal font. It's not the worst article I've seen lately, just a typical article with lots of bad information and understanding.

All varieties of gypsum, including Selenite and alabaster, are composed of calcium sulfate dihydrate.

The second sentence capitalizes selenite where it shouldn't be, but it sounds scientific with an accurate description of it's chemistry. If describing varieties of a mineral, it only makes sense that the varieties have the same chemical composition as a the parent material. Again, I think the author is copying this information.

Selenite is the crystalline form of gypsum.

No, gypsum is not amorphous. Gypsum is the crystalline form of gypsum. "Selenite" was first used to, and should be limited to, describing transparent gypsum. This is one of the dangers in using varietal names. They are often used incorrectly and eventually lose all significance and muddle terminology.

These crystals are very brittle and fragile.

Yes, I agree with this statement.

The mineral Selenite is a hydrogenous sedimentary rock with perfect, distinct cleavage.

No need to capitalize selenite again. The author looked up something about gypsum (it can be a hydrogenous rock) and applied it to the gypsum, variety selenite (transparent). The author's understanding of what a mineral and rock are is not clear. Where you do find gypsum as a hydrogenous sedimentary

rock (for instance the gypsum mines around Fort Dodge, Iowa) it is white and massive (not transparent). Rocks don't exhibit perfect cleavage, minerals do. Minerals are not rocks, but rocks can be made of mineral(s).

Selenite has a pearly luster and it's fracture is fibrous.

The luster of gypsum variety selenite is most frequently described as vitreous. Gypsum can have a luster of pearly, but it isn't really correct for a material that looks like glass. The "fibrousness" of gypsum comes from cleavage, not fracture.

Selenite has thin, elongated fractures produced by crystal forms or intersecting cleavages (e.g. asbestos).

It should be written that gypsum has these cleavage habits, not selenite. It almost implies that gypsum is asbestos like, a bad analogy. Gypsum cleaves along two planes with common fractures along a third plane, yielding elongate fibers.

On the Mohs scale hardness, it is a soft 2 which makes it a good mineral for carving.

2 is 2 and there are no soft 2's or hard 2's. Does being soft really make it a good material for carving? It is an easy material for carving, but it scratches, breaks, and is easily damaged. I've seen carvings made of corundum (ruby) which is the second hardest mineral. It can have more detail and would therefore be considered a good mineral for carving? The article is mostly about the variety selenite, which isn't often carved because it scratches to a white material, less desirable than the transparent material.

Selenite is a common material in paints, tile, drywall, blackboard chalk, fertilizer, and Plaster of Paris.

Again, the transparent variety of gypsum (selenite) is not used for commercially. It is easier to mine massive, white gypsum. It is also wrong that it is a common material in chalk, which is primarily calcite, not gypsum.

Selenite is said to be a powerful healing crystal that promotes peace and calm, mental clarity, and well-being. Selenite is believed to have the power to cleanse and charge other crystals, clear blockages in your energy field, and direct high-frequency energy into the body, promoting spiritual growth and mental clarity.

The last paragraph is complete and utter nonsense. I won't even dignify it with a response other than to say we all live in houses, go to schools, and work in buildings with gypsum walls; doesn't that count.

This so-called article is merely a pitch or an advertisement to get you excited about gypsum-variety selenite. Oh, by the way, the person who wrote this works for a rock shop where, by chance, they have a lot of gypsum to sell.

There is so much disinformation or stupid information on the internet. Don't cut and paste everything you see, you may be spreading stupidity, which we certainly need less of these days. Computers are garbage in, garbage out. As Abe Lincoln once said, "Don't believe everything you read on the internet."

CERUSSITE

By Eric Fritsch (as published on LGMC’s Facebook feed)

Cerussite is one of the mineral species that I like. One of the habits that I like in cerussite is that it often forms cyclic twins. Cerussite will frequently twin at 120 degrees to other cerussite crystals forming a snowflake pattern seen in this specimen. Other good cyclic twinning minerals include chrysoberyl, chalcocite and ice. Snowflake crystals are also commonly cyclic twins.

Because it is a lead mineral, it is fairly dense for its size or has a high specific gravity. It's specific gravity is roughly 6.55 or more than twice that of quartz. You'll often find cerussite growing on or associated with galena, another lead mineral.

The word cerussite comes from the Latin word for white lead (cerussa) and people have been making white lead (hydrocerussite or cerussite with a couple OH anions) for over 2,300 years.

They used to make hydrocerussite in Omaha. Lead smelted from galena was combined with vinegar to create hydrocerussite. Hydrocerussite is white and was added to paint to make it white (so called “lead paint”). It was a big business in Omaha in the 19th century and much of downtown Omaha is polluted because lead smelting and hydrocerussite production. Omaha is either the largest or one of the largest EPA superfund sites due to lead contamination in residential soils.

Pictured is a large specimen of cerussite from my collection. It was recently collected in Mindouli, Congo, where some really neat specimens are coming from these days. Excellent specimens of cerussite have also come from Tsumeb, Namibia and elsewhere.

Is there danger in handling this specimen? No, not really. Everyone should exercise good care and hygiene when handling mineral specimens. I almost always wash my hands before handling mineral (to avoid transferring oils to the specimen) and after (to wash off any specimen or dust). You need to be mindful of crumbs, dust, and other small fragments. If you don't need to handle the specimen, then perhaps you shouldn't. It also reduces the risk of breaking it or dinging it.

A good practice is not to eat or drink around your collection. I avoid food in my collection because it can also attract pests.



NEMAHA RIVER FIELD TRIP

By Sharon Marburger (photos by James & Sharon Marburger)

On October 23, a group of 12 club members and one visitor met at the Pawnee City Casey’s to caravan to two locations on the South Fork of the Big Nemaha River for collecting.

FIELD TRIP - CONTINUED

The day was beautiful, sunny, and breezy. It was the perfect temperature for an outing.

It should be mentioned that the visitor on this trip was a reporter for NebraskaLand magazine. She will be writing an article on rock collecting in Nebraska, said article to be published in the spring of 2024. Wooly said she took hundreds of pictures. It will be interesting to see which of our members get memorialized in the magazine.

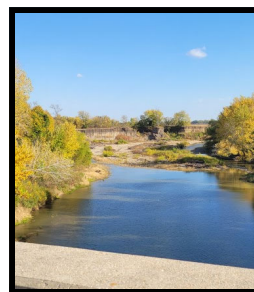
Wooly organized and led the group to the first location, commonly called “Broken Bridge”. The hike from the parking area to the river was treacherous; maneuvering a barbed wire fence, then walking down a steep hill through trees and underbrush. If not careful, one could trip over exposed roots, downed trees, or one’s own feet, or even get tangled in some lovely stinging nettles.

The river was very low, exposing lots of sand and gravel bars. The group quickly spread out, hunting for treasures. Some great finds were discovered. Check back next month for an article written by Corey Beer, on some of the finds. Among other specimens, there were lots of honey agate, brown jasper, shells, and some sparkly minerals.

The second location took us to Miles Ranch. Here, we could park the cars next to the river and walk the exposed gravel bars. There was not much exciting in the way of finds here, just the usual agates, jaspers, and petrified woods.

It was around 4:00 when we decided to call it a day. We drove to the Six-Mile Café outside of Dawson for supper. The food was delicious and plentiful. We ate until we could eat no more, and several take home boxes left the café.

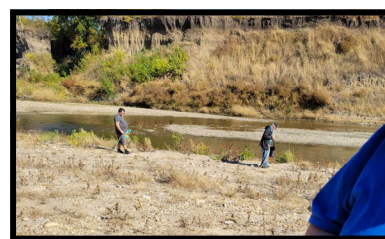
It was a great field trip. Plan to join us on the next one!



Wooly describing what to expect



Climbing over the barbed wire fence



Brett and Eddie walking the river



Wooly, our intrepid leader

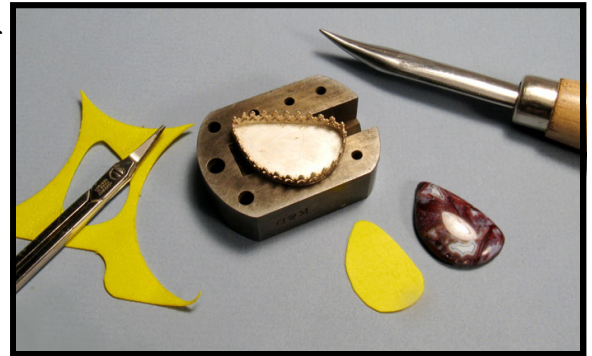
BENCH TIPS BY BRAD SMITH

RAISING A CABOCHON

When a cabochon sits too low in a bezel, the bezel hides a lot of the stone. The solution is to either sand down the bezel height or boost up the stone. But if you choose to raise it up, the question is what is the best material to use?

I was taught to use fine sawdust but now think that might be a problem when used in rings. I reason that rings will frequently get wet, which would cause the sawdust to swell in size and push the stone against the bezel. Then when the sawdust dries out, the stone would be a little loose.

In any case, I now prefer to insert a flat sheet to boost up my stones. It can be a scrap of metal or some plastic from product packaging or old credit cards. In either case, just cut a piece to loosely fit into the bezel and drop in the stone (with some dental floss) to check its height.



TRANSPARENT CABS

When bezel setting a transparent cabochon in silver, I usually cut out the back of the bezel to allow background light to show off the colors and patterns in the stone. If this is not possible or appropriate, I worry that the silver bezel will tarnish under the stone and will ruin its brilliance. What to do?

My solution is one extra step before setting the stone. I place a piece of thin silver Mylar plastic under the stone to act as a mirror that will never tarnish. Mylar is readily available in craft and gift wrap stores, or in a pinch from a party balloon supplier. You may even want to experiment with using colored or patterned Mylar (i.e. diffraction pattern) under some stones.



See Other Tips in my Smart Solutions for Jewelry Making Problems

<http://amazon.com/dp/B0BQ8YVLTJ>

MARK YOUR CALENDARS!

- November 16: General Meeting (Annual Business Meeting with Election of Officers)
- November 19: Rock Party at Hidden Gems (Soup Supper in memory of Roger Pabian)
- December 3: Club Christmas Party (with Rock Bingo!!!!)
- December 16: Rock Party at the Marburgers (Sharon will make chicken broccoli casserole)
- January 21, 2024: Mid-Winter Swap with pizza supper and meeting to follow (NOTE NEW DATE)
- January 27, 2024: Club Activity Night at Hidden Gems

Lincoln Gem & Mineral Club's 64th Annual Gem & Mineral Show

Nebraska's Geologic Treasures

No suggestions were offered by the general membership for the 2024 Show postcard. This display case (which won 2nd Place People's Choice Award at the 2023 show) is a good representation of Nebraska's geologic treasures. The Show Committee will have 5,000 postcards printed and have them available at the Mid-Winter Swap. Please plan to take a stack to distribute to various businesses, groups, and people. Advertising the Show requires the help of everyone in the club.

LINCOLN GEM & MINERAL CLUB'S 43rd Annual Mid-Winter Rock Swap



New Date!
Sunday, January 21, 2024
1:00 p.m. to 5:00 p.m.
Admission \$3.00

Bethany Park Enclosed Shelter

64th and Vine Streets

**Family
Friendly**

**Buy
Sell
Trade**

**Lapidary
Supplies
&
Equipment**

**Club
Sales**

**Rocks
&
Minerals**

Fossils

Jewelry

NEW THIS YEAR!
Cash and Credit Card Sales!
No more Swapper Bucks.



**Help the Lincoln Food Bank
replenish its shelves after the
holidays. Bring canned items
for the Food Bank.**

Swapper Tables: ½ Table - \$10; Full Table - \$20; Limit 1 table per swapper

Setup begins at 12:00 Noon

Reserve your table online beginning December 4, 2023 (www.lincolngemmineralclub.org)

Swappers are responsible for collecting Nebraska State Sales Tax and remitting it to the State.

LINCOLN GEM & MINERAL CLUB

Box 5342

Lincoln, NE 68505-0342

Contact: Sharon Marburger, 402.429.3323 or Jayne Beer, 402.890.3307

2024 MID-WINTER SWAP COMMITTEE

Chairmen: Jayne Beer, Sharon Marburger
 Advanced Reservations: Sharon Marburger
 Club Booth/Rock Pile James & Sharon Marburger
 Finance & Admissions: Vera Lyman
 Floor Chairman: Jayne Beer
 Insurance Vera Lyman
 Publicity & Promotion: Jayne Beer, Jim Marburger
 Web Master: Sharon Marburger
 Youth Activities: Brett Jurgens

2024 SHOW COMMITTEE

Theme: **Nebraska's Geologic Treasures**

Chairman: Jayne Beer
 Dealers & Demonstrators: Vera Lyman
 Displays: Brett Jurgens
 Event Center Liaison Vera Lyman
 Finance/Ticket Sales: Jim Atkins, Vera Lyman
 Floor Chairman: Corey Beer, Jayne Beer
 Fluorescent Booth: Clyde Ogg
 Forms Sharon Marburger
 Indoor Rock Pile: Jim & Sharon Marburger
 LGMC Club Booth: Charles Wooldridge
 Nebraska Gem Dig: Charles Wooldridge
 Plants: Ed Ridge
 Publicity & Promotion: Jim Marburger
 Raffle Gene Mulinex
 Ribbons & Recognitions: Sharon Marburger
 Security: Vera Lyman
 Show Flyer & Printed Program Sharon Marburger
 Youth Activities: Brett Jurgens

2024 SUMMER SWAP COMMITTEE

Chairmen: Corey Beer, Jayne Beer
 Advanced Reservations: Sharon Marburger
 Finance & Ticket Sales: Vera Lyman, Gene Mulinex
 Floor Chairmen: Corey Beer, Jayne Beer
 Insurance Vera Lyman, James Marburger
 LGMC Rock Pile: Sharon Marburger
 Publicity & Promotion: Jayne Beer, Jim Marburger
 Web Master: Sharon Marburger
 Youth Activities: Brett Jurgens

ADVERTISING INFORMATION

Advertising by rock / hobby business or interest is permitted with the approval of the Board of Directors. Contact the Editor with your proposed ad. The rate is set at \$20.00 per full page; \$10.00 per 1/2 page; \$5.00 per 1/4 page (minimum) per issue, paid in advance to the Club treasurer. Ads will be placed throughout the newsletter as space permits.

STANDING COMMITTEES**Audio/Visual:**

Jayne Beer

Audit:

Jayne Beer, Ed Dvorak, James Marburger

Christmas Party:

Edward Ridge

Door Prizes:

Corey Beer, Brett Jurgens, Charles Wooldridge

Facebook:

James Marburger, Jayne Beer, Brett Jurgens

Field Trips:

James Marburger

Historian:

Sharon Marburger

Legislative Liaison:**Membership Record:**

Edward Ridge

MWF Liaison:

Vera Lyman

Programs:

Clyde Ogg (Wooly & Brett assisting)

Property:

James Marburger

Recognition/Awards:

Vera Lyman, Sharon Marburger

Refreshments:

Vera Lyman

Show - 2024:

Jayne Beer

Swap (Mid-Winter) 2024:

Jayne Beer & Sharon Marburger

Swap (Summer) 2024:

Jayne Beer & Corey Beer

Website:

Sharon Marburger

Youth Activities:

Brett Jurgens

MEMBERSHIP INFORMATION

Membership dues for the Lincoln Gem & Mineral Club are as follows:

- Adults (age 16 and over) - \$20 per year or \$30 per couple (within the same household)
- Juniors - \$3 per year (with a responsible adult)

All new memberships must be accompanied by a written application. Prospective members must gain Board approval and attend one regular meeting or club event before paying dues. Applications are available on the website:

<https://www.lincolngemmineralclub.org/about/membership>, or you may contact Treasurer Vera Lyman for a printed copy.

Mail Exchange Newsletters to:
Lincoln Gem & Mineral Club, Inc.
P.O. Box 5342
Lincoln, NE 68505-0342



Or e-mail newsletters to:
lgmc.editor@outlook.com

A color version of the Pick & Shovel is available at:
<http://www.lincolngemmineralclub.org/index.php/newsletters/current>

PICK & SHOVEL

Lapidary Classes

(Stone Cutting)

Regular student

Pay \$75 for 5 3-hour classes

You get first choice at the session you choose.

If you cannot be there, let me know by noon on Friday and you won't be charged for the class (this is how drop in openings happen). If you don't call and don't show up, you will be charged as if you were there.

Drop in student

Pay \$15 for 3 hours

This is only when openings are available.

I will post on Lincoln Gem and Mineral Club Facebook page when there are openings.

Hidden Gems

by The Jewelry Connection

3227 S 13th
Lincoln Ne

Class Times

Saturday 10 am - 1 pm

Saturday 2 pm - 5 pm

Sunday 1 pm - 4 pm

Jayne Beer - Jeweler
402-890-3307

Corey Beer - Lapidary
402-890-9155

Silversmithing Classes

The Jewelry Connection Ltd.

Indian Village Shopping Ctr.

3227 S. 13th St., Lincoln (next to LaundrOmat)

Tuesday & Wednesday Evenings

7:00 p.m.—10:00 p.m.

Tuition: \$150 plus \$30 supply deposit

Tuesdays

Session 1: Jan 10—Feb 28

Session 2: Mar 7—Apr 25

Session 3: May 2—Jun 20

Session 4: Jun 27—Aug 15

Session 5: Aug 22—Oct 10

Session 6: Oct 17—Dec 5

Wednesdays

Session 1: Jan 11—Mar 1

Session 2: Mar 8—Apr 26

Session 3: May 3—Jun 21

Session 4: Jun 28—Aug 16

Session 5: Aug 23—Oct 11

Session 6: Oct 18—Dec 6

Contact: Jayne Beer 402-890-3307 or look up “Hidden Gems by The Jewelry Connection LTD” in Facebook and send message