

# THE PICK & SHOVEL



In association with

The Official Publication of the

Lincoln Gem &  
Mineral Club, Inc.



The Midwest Federation of  
Mineralogical and  
Geological Societies



The American  
Federation of  
Mineralogical Societies

The purpose of this corporation shall be to study, promote an interest in, and disseminate knowledge of lapidary and various Earth Sciences including but not necessarily limited to Geology, Paleontology and Mineralogy. It shall be a particular purpose of the corporation to provide education in these fields to its members and the general public, especially to youth and student groups.

**GENERAL MEETINGS**

Third Thursday of the Month, except for January (4th Saturday), December (1st Sunday), and summer break (June, July, August). Juniors meet at 5:30 p.m.; adults meet at 6:00 p.m.

September 15, 2022

October 20, 2022

November 17, 2022 (Annual Business Meeting)

December 4, 2022 (Christmas Party)

**BOARD MEETINGS**

Until further notice, Board Meetings will be held at 6:30 on the first Thursday of each month.

**Next Board Meeting:**

**Thursday, October 6, 2022 at 6:30 p.m.**

**Vera Lyman's Residence**

Persons of general membership are invited to attend Board meetings and offer agenda items.



**Please continue to do your part.  
Wear a mask to meetings.**

Graphic borrowed from <https://dhhs.ne.gov/Pages/Coronavirus.aspx>

**SEPTEMBER BIRTHDAY GREETINGS**

Vera Lyman  
Brett Jurgens  
Brad Nielsen



**The deadline for submissions  
to the P&S is the  
last Sunday of each month.**

**Check out the  
Sunday Fun-Day Auction  
on our Facebook page  
([https://www.facebook.com/  
groups/223555904325876](https://www.facebook.com/groups/223555904325876))  
most Sundays  
from 10 a.m. to 8 p.m.**

Sunday Fun-Day Auctions are the only times that sales are permitted on this site.

**Nominations for the 2023 Board of Directors** will be taken at the **September 15** meeting. Please be prepared to nominate someone, including yourself. If you have been a club member for a minimum of one year, you may run as a Board member. If you have been a member for a minimum of two years, you may run for any office. Let's try to get some new blood on the Board, to continue to lead the club in the direction it needs to go.

All articles, tidbits, and photos not individually identified as being contributed to this publication are provided by the Editor.

Please send your hobby-related photos with captions or explanations for publication in the Pick & Shovel. Field trips, lapidary projects, fossil projects, metal projects, wire wrapping, tumbling, or any other activity of interest to the club. Since we have limited meetings in person at this time, it is important to share with others what you are doing. Your project may inspire someone else.

Send via email ([lgmc.editor@outlook.com](mailto:lgmc.editor@outlook.com)) or via Facebook Messenger to Sharon Marburger (<https://www.facebook.com/mamamar7880>).

**PRESIDENT'S MESSAGE**

by Jayne Beer (photos by Beers)

Hello, rock folks! I hope this month's Pick & Shovel finds you very busy going through and sorting and working your summer finds. We have not gotten much opportunity to get out collecting. Hoping the cooler fall gives us a chance to get out.



I am starting this message while sitting in our booth at the Crawford Rock Swap. If you haven't been to this event, you should definitely make the trip out here. Their swap is over the Labor Day weekend every year.

This year, on the way out, we decided to stop at the Petrified Wood Gallery in Ogallala, Nebraska. I had never been there, but Corey had been there with Brett. It is a quite amazing gallery with so much candy for the eyes. We had the great fortune to meet Howard and Harvey Kenfield. It was super interesting to talk with them about their collection. We were even allowed to take a picture with the twins. If you haven't been out to the petrified wood museum, it is definitely worth a trip to Ogallala.



The Crawford Swap is always fun. We got to reconnect with some old friends and make several new friends. Corey sold some rocks and bought a lot more rocks. We are definitely considerably heavier than when we drove out.

The meal and auction on Saturday night at the Swap is so much fun! I would love to have an auction out at our summer swap. As a matter of fact, I fashion a lot of our swap after what I see them do at Crawford. This year, there were 77 vendors at Crawford. Wouldn't it be amazing to get that many at our swap?

On Sunday, Corey and I went out on the rock collecting with Wade Beins. We had a couple ride with us. Jack and Jancy seemed to enjoy their first rock collecting with Corey.

On Monday, we started our trek home. First we stopped in Melbeta, Nebraska at a place called "Rocking H Rock Shop" and met Gene, the owner. It is a good place to stop if you are in the area. Next we went to Kim and Kathy Nielsen's house by Scottsbluff. All I can

*(Continued on page 7)*

**AUCTION NOTICE:**

Rock collection of long-time members, Roger & Mary Pittard

2-day Auction

Saturday, September 25, 2022  
10:00 a.m.  
Preview at 8:00 a.m.

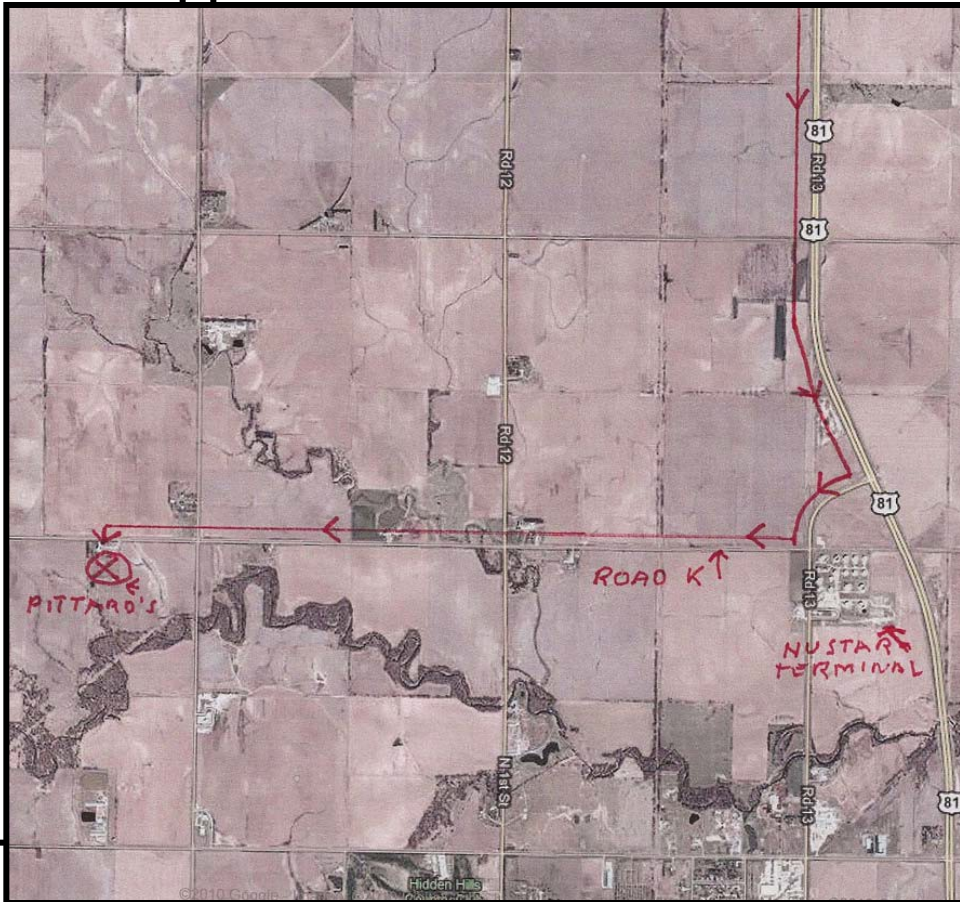
Sunday, September 26, 2022  
10:00 a.m.  
Preview at 8:00 a.m.

**DIRECTIONS:**

Just North & West of Geneva, Nebraska.  
2 1/3 Miles West of Hwy. #81 on Road "K"  
(Look for arrow signs on Hwy. #81 and on Road "K"!)

For list of items, go to  
<http://www.fordfordauctioneers.com/index.php/features/item/936-upcoming-2-day-rock-auction-for-roger-pittard-saturday-september-24th-sunday-september-25th-2022-geneva-ne>

**Map drawn by Roger Pittard in 2013!**



**AUGUST ROCK PARTY**

by Sharon Marburger

Wooly hosted the August Rock Party at his home on August 13 at 6:00 p.m. It had been a very warm day (one might even say it was HOT!), but the evening turned beautiful, at least in Wooly's shady back yard. There were 11 people in attendance, and Hank the dog.

Wooly prepared some out-of-this-world baby back ribs. They were complemented with sides of macaroni salad, baked beans, a vegetable tray, pickles, flavored pork rinds, and Fritos. Dessert was brownies and cookies.

We had nice chats about minerals, rocks, fluorescent items in both categories, field trips, Hank's & Wooly's fantastic find, and plants and flowers. Wooly had placed nice polished specimens on the tables as centerpieces/decorations.

I believe Wooly is planning to do a program on their fantastic find at the September meeting. Be there to hear all about it!

**DON'T FORGET!**

**Nominations for the 2023 Board of Directors** will be taken at the **September 15** meeting. Please be prepared to nominate someone, including yourself. If you have been a club member for a minimum of one year, you may run as a Board member. If you have been a member for a minimum of two years, you may run for any office. Let's try to get some new blood on the Board, to continue to lead the club in the direction it needs to go.

**VOLUNTEER****MAY GENERAL MEETING MINUTES**

Lincoln Gem and Mineral Club General Meeting  
May 19, 2022 at Bethany Park Shelter House  
By Jeff Kubitz, Secretary

Meeting called to order at 6:08 p.m. by President Jayne Beer. There were 25 members in attendance.

- Minutes read by Jayne Beer. Motion to accept minutes by Gene Mulinex, second by Allan Gossman. Motion passed.
- Treasurer Report read by Vera Lyman. Motion to accept report by Jim Marburger, second by Ed Ridge. Motion passed.

**Old Business:**

- Jayne and Corey Beer toured a facility that could work to house the lapidary equipment and classes. Rent would be \$2,150 to \$2,400 per month, depending on if we want the entire area. It's about 3,200 square feet plus several offices in back. The question brought up was can we have the room for the lapidary equipment and classes pay for itself? Sharon Marburger asked if we could have our general meetings there, too, and save on rent. Bethany Park Shelter House costs us \$1,800.00 per year.
- Jim Marburger said the club members will meet with the new Parks and Recreation Administration soon.
- Arvid Olson mentioned he would check with the guy he rents space from to store the lapidary equipment. Allan Grossman said he knew this guy, too. Sharon Marburger reminded the group that our club is non-profit.
- Sharon and Jim Marburger also mentioned checking with the Artist Guild Consortium about this issue.

**New Business:**

None.

**Swap Business:**

- Jayne Beer will call around for tables. We spent \$304 on tables last year. Eight foot tables are needed, but six foot will work. We need 35 tables and have 20 to 22 spoken for by vendors at this time.
- Allan Gossman thought tables could be rented from churches and Arvid Olson mentioned if any club members have tables, they could bring them.
- Jayne announced we need more vendors and she has fliers ready for all members to take and distribute.
- We are going to go with a different food vendor this year. The one we wanted to hire requires \$250 just to drive to the Swap and set up.
- Motion to adjourned by Vera Lyman and second by Jim Marburger. Motion passed. Meeting adjourned at 6:50 p.m.

**JUNIORS**

by Brett Jurgens, Junior Leader



I am writing this from the small town of Crawford, Nebraska - way in the northwestern part of the panhandle. I am in town for the 36th annual Crawford Rock Swap. It is held outdoors in the Crawford city park. We typically have multiple club members participate - both as dealers and buyers. If you ever get the chance, check it out!

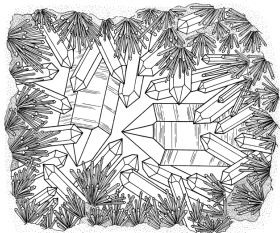
I hope you all enjoyed your summer vacations! School has started back up, and with that, our regular club meetings. Please join me Thursday, September 15th for our junior meeting at 5:30 p.m. We will be talking about the rocks found around Crawford, Nebraska. The areas around Crawford have a rich geologic history and there are lots of areas for collecting. Nebraska blue agate/chalcedony is one of the prize findings. While the blue or banded examples are scarce to find now, there are hilltops of the white and gray examples. A lot of the chalcedony fluoresces a vivid green.

Bring your specimen boxes as you will be leaving with a couple more specimens. Looking forward to seeing everyone at the meeting,

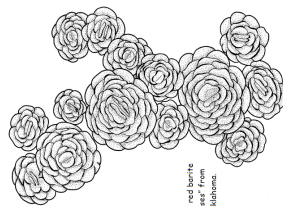
**QUIZ**

Excerpted from Mini Miners Monthly, Vol/ 14, No. 7 (July 2022)

1. Which mineral is #1 on the hardness scale? \_\_\_\_\_
2. Which mineral is #2 on the hardness scale? \_\_\_\_\_
3. Which mineral is #3 on the hardness scale? \_\_\_\_\_
4. Which mineral is #4 on the hardness scale? \_\_\_\_\_
5. Which mineral is #5 on the hardness scale? \_\_\_\_\_
6. Which mineral is #6 on the hardness scale? \_\_\_\_\_
7. Which mineral is #7 on the hardness scale? \_\_\_\_\_
8. Which mineral is #8 on the hardness scale? \_\_\_\_\_
9. Which mineral is #9 on the hardness scale? \_\_\_\_\_
10. Which mineral is #10 on the hardness scale? \_\_\_\_\_



Quartz Crystals



Red-brown  
Orthoclase  
Feldspar

**TIDBITS FROM WOOLY**

by Charles "Wooly" Wooldridge



We finally were able to extricate the large fossil tree trunk my buddy Hank and I found last year. It took a cooperative effort of the University of Nebraska State Museum, Nebraska Game and Parks and the Department of Transportation (formerly Department of Roads). Three paleontologists and I prepared the stump and two payloaders removed it the next day. It is currently housed at Ashfall Fossil Bed Museum.

When in four feet of water, we knew it was big; real big. Rick Otto, the director at Ashfall, estimated it to be around 3,000 pounds. We were in for a big surprise when it weighed in at 3.73 tons! As far as we can tell, it is probably the largest petrified stump ever found in Nebraska. I hope to present a program about it at the September LGMC meeting.

I am currently at the Crawford Rock Swap. There are even more vendors than in previous years. This gives me continued hope in the re-emergence of the hobby. It's good to see so many folks from Lincoln that made it out. See you all soon!



Answers to Quiz

1. Talc; 2. Gypsum; 3. Calcite; 4. Fluorite;
5. Apatite; 6. Orthoclase Feldspar;
7. Quartz; 8. Topaz; 9. Corundum;
10. Diamond

**FOR SALE**

Frantom Cabbing Machine; 10 inch Slab Saw, and Craftsman Horizontal Lap.  
Cabbing machine has two 1½ by 8 inch silicon carbide grinding wheels; one 3 by 8 inch expandable drum; step pulley to adjust speed; plumbed for water. This unit is able to be converted to diamond wheels.  
The saw comes with a vice and has gravity feed.  
The horizontal lap is shown in the bottom right picture.  
The set comes with three motors and miscellaneous accessories.  
It has been well-cared for and protected from the weather.  
\$800 for everything. Contact Vera Lyman. 402.464.6089.

Glenn Lyman cut many beautiful stones with this setup.

This is a paid ad.



## PRESIDENT'S MESSAGE - CONTINUED

*(Continued from page 3)*

say is WOW! They have an incredible collection! And displayed so well. WHAT A TREAT!

There were several things that we wanted to do this trip that we didn't have time for. Oh darn, I guess we will have to go back next year.

Now back to club news. The general meetings start up again, beginning September 15th at 5:30 p.m. for juniors, 6:00 for adults. I hope you see you there. Bring things to show others what you have been up to recently, or just interesting stuff.

Did you know that we are planning to have the Mid-Winter Swap at Bethany Park again next year? Mark your calendars! Saturday, January 28th!

Is anyone willing to host a grinding party at your house? Just let us know at the meeting.

We still need to find a location for the lapidary equipment so that club members would have access to using it. Please come with ideas!

I am looking forward to seeing club members at the meeting. CHEERS!

## THE GOLDSTONE STORY

from the Arkansas Rockhound News (1965)

For hundreds of years, men everywhere have tried to transform base metals into gold. In olden times, monks of northern Italian monasteries were also engaged in this task. For many years, these monks labored to discover the secret, but as many other goldmakers, they also failed to produce the precious metal in their retorts.

About 1590, after years of effort, the monks happened to make a very beautiful sparkling material with innumerable golden stars. The monks had failed in making gold, but they did succeed in producing a marvelous specimen which they properly named "Goldstone". This was used for decorative purposes until 1890, when it was imported into the United States, after it was found to be suitable for cutting and polishing for jewelry pieces.

The monks called Goldstone the "Adventurine" stone, as it is impossible to foretell the success of a mixture for many weeks. To this day, due to the lack of modern production methods, a "batch" of material can turn out unsuitable for use because of the uncertainty in the heating and cooling process. The production of Goldstone has been a secret method all these years, concealed from everyone. Many have tried to duplicate Goldstone but, to date, no one has been successful in imitating this beautiful stone.



Some nice chalcedony



Museum piece made entirely of petrified wood



King of the Hill

*(Continued on page 8)*

### IMPROVEMENT ON THE FILTER MATERIAL USED IN THE 3-BUCKET METHOD CLEANUP FOR A TUMBLER.

I have found a new item that will come in handy for washing up a tumbler grit change, using limited water in the 3 buckets cleanup method. In the past, I suggested using a nylon window screen to dump the tumbler into when changing the grits. This does work, but sometimes when dumping the sludge into the window screen, the rocks may fall out of it. Now you can upgrade this to a nylon screen that is made to fit a 5-gallon bucket, with elastic to fit the bucket. These bags are used to filter paint originally, but beekeepers also use them to filter honey. I looked around and found them on Amazon and they were reasonable priced, so I ordered 15 bags for around \$16.00. I was worried the rocks might be too heavy for them since most of my tumblers hold 12 pounds of rocks. Not a problem. I found out that I could change 4 tumbler barrels using just one filter bag.



I then cleaned my 40-pound tumbler, but I used 2 filter bags, and the filters supported the large load. So, I say it was a good improvement over window screen. (4 agate thumbs up!) These bags could be used when cleaning crystals or rocks with acid. Here is the Amazon description for this filter bags:

- 5 Gallon Paint Strainer Bags White Regular Fine Mesh/ Elastic Top Bag Strainers for Use with Paint Sprayers
- Large quantity: 15 pieces mesh elastic top bag strainers for 5 gallon bucket (bucket is not included), sufficient quantity can meet your various different needs
- Function: quality paint filter bag helps you filter the particles in the paint to prevent clogging during painting, giving you a smooth painting experience
- Durable and practical: featuring durable white nylon fine mesh and elastic opening, the filter bag can filter particles larger than 250  $\mu\text{m}$ , ensuring the fineness of the paint
- Elastic top design: having an elastic opening, the paint strainer bags can be firmly covered on the bucket and the elastic opening can be fixed on the edge of the barrel to keep staying in the right position
- Not just for paint: in addition to filtering paint and stains, these mesh bags can also be applied to gardening, such as plant protection, hydroponics and aquaculture.



### GOLDSTONE—CONTINUED

*(Continued from page 7)*

For the most part, the bulk Goldstone, after it is removed from the retort, is shipped to the major stone cutting and polishing centers throughout the world. Germany, perhaps, is the most important cutting center, although much of the cutting is done in Austria, Holland, and some as far away as Japan. Goldstone is truly a universal stone.

In recent years, a blue Goldstone has been developed from the same process as the makers of the brown Goldstone. This stone has been called “blue magic”, “midnight stone”, and some people claim it will glow in the dark after being exposed to sunlight for many hours.

Goldstone has enjoyed popularity in the United States for many years. However, today its greatest popularity is enjoyed because of so many popular mountings that blend well with either the brown or blue Goldstone. Goldstone is the stone that

*(Continued on page 9)*

## DREAMS OF A ROCKHOUND

by Catherine L. McFadden (former member)  
published in Reflections of a Rockhound

With Ivory sails on our Malachite boat  
Down a river of Blue Lace we float.  
With clouds of Opal drifting silently by  
Engulfed in the Turquoise of a quiet sky.

Along our river lay Moss Agate, so green  
But beyond that, just barely perceived,  
Lay a desert of Sandstone, so parched and dry,  
It could hardly be believed.

We see the mountains of glorious hues;  
Of Jasper, and Iron, and Gold.  
They are capped at the tip with Milky Quartz  
Reflecting God's Beauty untold.

All at once, without a warning word,  
A magnificent sight occurred.  
The sky turned to Lapis, with lightning of Pyrite  
And a storm brewed as dark as the midnight.

I was glad right away, that this dream I had dreamed,  
For I knew at my word it would end.  
But I'll dream it again; this fantasy trip

## GOLDSTONE—CONTINUED

*(Continued from page 8)*

Grandma remembers most, outside of her diamonds. It will not discolor, fade, or lose its beauty in any fashion, making it a precious keepsake.

### WHAT IS GOLDSTONE?

from Geology.com; (Sep 6, 2022)

Author: Hobart M. King, Ph.D., GIA Graduate Gemologist

Goldstone is a man-made colored glass that contains abundant, flat-faced, highly reflective inclusions. The reflective inclusions have a bright metallic luster, and their glittering appearance immediately attracts attention. This exciting appearance has made goldstone a popular man-made gem and sculptural material. It is often cut into cabochons, hearts, beads, spheres, pendulums, arrowheads, and small sculptures. It is a popular material for making tumbled stones.

Goldstone is produced in a variety of colors. Reddish brown, the original color, is the least expensive and the most commonly encountered variety of goldstone. Dark green, dark blue, and dark purple goldstone are also produced.

### What Causes Goldstone's Glittery Appearance and Color?

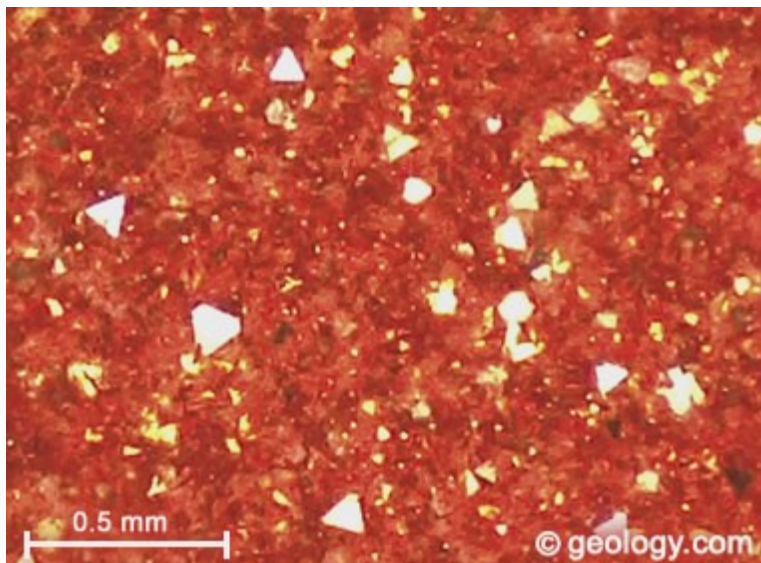
The glittery appearance of goldstone is often attributed to "bits of copper" or "copper filings" that have been added to the glass. That simplistic description is incorrect.

Reddish brown goldstone is made by heating molten glass to a temperature that is hot enough to dissolve granules of copper oxide that are added to the melt. After the copper oxide is completely dissolved, the melt is allowed to cool very slowly. This slow cooling gives copper ions in the melt adequate time find one another and grow into octahedral-shaped copper crystals. The slower the cooling, the larger the copper crystals.

The bright metallic luster of these copper crystals is what produces the sparkling appearance of goldstone. An octahedral crystal has eight triangular faces. If you look at goldstone with a microscope under reflected light, you will see triangular faces of the copper crystals reflecting the light back at you from various depths below the surface of the glass. See the accompanying image.

The glass of reddish brown goldstone is colorless. Its reddish brown appearance is caused by reflections from the included copper crystals. Blue, green, and purple goldstone are made using compounds of metals other than copper. The color of these goldstones is caused by the color of the glass rather than the color of the reflections from the metallic crystals. The glass color of blue goldstone is caused by cobalt, green is caused by chromium, and purple is caused by manganese.

Reflections from the metallic crystals within the goldstone attract attention and give goldstone its sparkling appeal. The sparkling appearance of the reflections is intensified in three situations: 1) when the goldstone is moved under incident light; 2) when the light source is moved; and, 3) when the eye of the observer is moved.



**Copper Crystals in Goldstone:** You are looking through a microscope at a polished surface of reddish brown goldstone. A bright light is shining down onto the surface of the goldstone. The triangular faces of octahedral copper crystals are reflecting the light back at you from various depths below the polished surface of the transparent glass. The largest triangular crystal face seen in this view is about 0.1 millimeters from apex to base.

**HOBBY FUN**

Complete the scrambler below. Bring your correct answers to the September General Meeting and win a prize! (borrowed from the late Kitty Starbuck)

1. GAWYDU ODGEE \_\_\_\_\_
2. ULEB NELOHCDYAC \_\_\_\_\_
3. NBFURAIR TAGEA \_\_\_\_\_
4. ZLBIAINRA GTAEA \_\_\_\_\_
5. DAREMLE \_\_\_\_\_
6. DFIPERITE ODOW \_\_\_\_\_
7. QSUEIOTRU \_\_\_\_\_
8. NATSEPRIA \_\_\_\_\_
9. POAL \_\_\_\_\_
10. TMONANA GATEA \_\_\_\_\_
11. HSMYATET \_\_\_\_\_
12. IRPIAER EATAG \_\_\_\_\_
13. TIPODER \_\_\_\_\_
14. BYRU \_\_\_\_\_
15. TELOBIRIT \_\_\_\_\_
16. NAGRET \_\_\_\_\_
17. NAMDOID \_\_\_\_\_
18. SNETOLDGO \_\_\_\_\_
19. CRINITE \_\_\_\_\_
20. SILSFOS \_\_\_\_\_
21. HIPSAPER \_\_\_\_\_
22. PAZTO \_\_\_\_\_
23. PIALS ALIZUL \_\_\_\_\_
24. HOMATMM OHTOT \_\_\_\_\_
25. MAQRAUAIEN \_\_\_\_\_
26. AEEHIMTT \_\_\_\_\_
27. REOPPC \_\_\_\_\_
28. LODG \_\_\_\_\_
29. MTINUPLA \_\_\_\_\_
30. CINZ \_\_\_\_\_
31. NEAITRG \_\_\_\_\_
32. ZUQRAT \_\_\_\_\_
33. UXBATEI \_\_\_\_\_
34. ALESH \_\_\_\_\_
35. EYPRTI \_\_\_\_\_

**2023 MID-WINTER SWAP COMMITTEE**

Chairman:..... Sharon Marburger  
 Club Booth.....  
 Finance & Swapper Bucks Sales:..... Vera Lyman  
 Floor Chairman: ..... Corey Beer, Jayne Beer  
 Insurance..... Vera Lyman  
 Publicity & Promotion: .....Jayne Beer, Jim Marburger  
 Web Master:..... Sharon Marburger  
 Youth Activities: .....Brett Jurgens

**2023 SHOW COMMITTEE**

**Theme:..... Fools Gold (Iron Pyrite)**  
 Chairman: ..... Jayne Beer  
 Dealers & Demonstrators: ..... Vera Lyman  
 Displays:..... Ed Ridge  
 Event Center Liaison ..... Vera Lyman  
 Finance/Ticket Sales:..... Vera Lyman, Jim Atkins  
 Floor Chairman:..... Corey Beer, Jayne Beer  
 Fluorescent Booth:.....Brett Jurgens  
 Forms.....Sharon Marburger  
 LGMC Club Booth: ..... Charles Wooldridge  
 Nebraska Gem Dig: .....Charles Wooldridge  
 Plants: ..... Ed Ridge  
 Publicity & Promotion:..... Jim Marburger  
 Raffle..... Gene Mulinex  
 Ribbons & Recognitions:.....Sharon Marburger  
 Security: ..... Vera Lyman  
 Show Flyer & Printed Program.....Sharon Marburger  
 Silent Auction:.....Sharon Marburger  
 Youth Activities:.....Brett Jurgens

**2023 SUMMER SWAP COMMITTEE**

Chairmen: ..... Corey Beer, Jayne Beer  
 Vendors: ..... Corey Beer, Sharon Marburger  
 Finance & Ticket Sales:..... Vera Lyman  
 Floor Chairmen: ..... Corey Beer, Jayne Beer  
 Insurance ..... Vera Lyman, Sharon Marburger  
 LGMC Club Booth: ..... Sharon Marburger  
 Publicity & Promotion:..... Jayne Beer, Jim Marburger  
 Web Master: ..... Sharon Marburger  
 Youth Activities: ..... Brett Jurgens

**2022 BOARD OF DIRECTORS****President**

Jayne Beer, 402.890.3307, JBeer60070@aol.com

**1<sup>st</sup> Vice-President**

Brett Jurgens, 402.850.3256, quartz89@aol.com

**2<sup>nd</sup> Vice-President**

Corey Beer, 402.466.6628

**Treasurer**

Vera Lyman, 402.464.6089

**Secretary**

Jeff Kubitz, 402.540.9395, jkubitz@neb.rr.com

**Board Member**

James Marburger, 402.430.6703, james.marburger@outlook.com

**Board Member**

Sharon Marburger, 402.429.3323, lgmc.editor@outlook.com

**Board Member**

Ed Ridge, 402.805.8248

**Board Member**

Charles Wooldridge, 402.975.0416, charles.wooldridgeii@gmail.com

**2022 LONG RANGE PLANNING & BY-LAWS COMMITTEE**

Charles Wooldridge, Chairman

- 1 year: Charles Wooldridge  
Sharon Marburger
- 2 years: Vera Lyman  
Jim Marburger
- 3 years: Jayne Beer  
Brett Jurgens

**2022 NOMINATING COMMITTEE**

Charles Wooldridge, Chairman

- 1 year: Brett Jurgens  
Sharon Marburger
- 2 years: Jim Atkins  
Corey Beer
- 3 years: Jeff Kubitz  
Vera Lyman

**ADVERTISING INFORMATION**

Advertising by rock / hobby business or interest is permitted with the approval of the Board of Directors. Contact the Editor with your proposed ad. The rate is set at \$20.00 per full page; \$10.00 per 1/2 page; \$5.00 per 1/4 page (minimum) per issue, paid in advance to the Club treasurer. Ads will be placed throughout the newsletter as space permits.

**STANDING COMMITTEES****Audio/Visual:**

Jayne Beer

**Audit:**

Ed Dvorak, Jayne Beer  
James Marburger

**Christmas Party:**

Edward Ridge

**Door Prizes:**

Corey Beer, Brett Jurgens, Charles Wooldridge

**Facebook:**

James Marburger, Jayne Beer, Brett Jurgens

**Field Trips:**

James Marburger

**Historian:**

Sharon Marburger

**Legislative Liaison:**

Susy McMahan

**Membership Record:**

Edward Ridge

**MWF Liaison:**

Vera Lyman

**Programs:**

All Members

**Property:**

James Marburger

**Recognition/Awards:**

Ed Dvorak, Jayne Beer, Charles Wooldridge

**Refreshments:**

Vera Lyman

**Show—2023:**

Jayne Beer

**Swap (Mid-Winter) 2023:**

Sharon Marburger

**Swap (Summer) 2023:**

Jayne Beer & Corey Beer

**Website:**

Sharon Marburger

**Youth Activities:**

Brett Jurgens

**MEMBERSHIP INFORMATION**

Membership dues for the Lincoln Gem & Mineral Club are as follows:

- Adults (age 16 and over) - \$20 per year or \$30 per couple (within the same household)
  - Juniors - \$3 per year (with a responsible adult)
- All new memberships must be accompanied by a written application. Prospective members must gain Board approval and attend one regular meeting before paying dues. Applications are available on the website: <https://www.lincolngemmineralclub.org/about/membership>, or you may contact Treasurer Vera Lyman for a printed copy.

Mail Exchange Newsletters to:  
Lincoln Gem & Mineral Club, Inc.  
P.O. Box 5342  
Lincoln, NE 68505-0342



Or e-mail newsletters to:  
lgmc.editor@outlook.com

A color version of the Pick & Shovel is available at:  
<http://www.lincolngemmineralclub.org/index.php/newsletters/current>

# PICK & SHOVEL

**Contact Jayne or Corey Beer if you are interested in attending lapidary classes.**

## PICK & SHOVEL STAFF

### **PUBLISHER:**

Lincoln Gem & Mineral Club, Inc.  
P.O. Box 5342  
Lincoln, Nebraska 68505

### **EDITOR:**

Sharon Marburger;  
E-mail:  
lgmc.editor@outlook.com

### **CIRCULATION:**

Vera Lyman;  
402.464.6089  
Sharon Marburger;  
402.429.3323

### **DEADLINE:**

Last Sunday of the month.

## Silversmithing Classes

The Jewelry Connection Ltd.  
Indian Village Shopping Ctr.  
13th & Arapahoe, Lincoln  
Tuesday & Wednesday Evenings  
7:00 p.m.—10:00 p.m.

**Tuition: \$150 plus \$30 supply deposit**

### Tuesdays

Session 1: Jan 11—Mar 1  
Session 2: Mar 8—Apr 26  
Session 3: May 3—Jun 21  
Session 4: Jun 28—Aug 16  
Session 5: Aug 23—Oct 11  
Session 6: Oct 18—Dec 6

### Wednesdays

Session 1: Jan 12—Mar 2  
Session 2: Mar 9—Apr 27  
Session 3: May 4—Jun 22  
Session 4: Jun 29—Aug 17  
Session 5: Aug 24—Oct 12  
Session 6: Oct 19—Dec 7

Contact: Jayne Beer 402-890-3307; jbeer60070@aol.com