

THE PICK & SHOVEL



The Official Publication of the Lincoln Gem & Mineral Club, Inc.

In association with

The purpose of this corporation shall be to study, promote an interest in, and disseminate knowledge of lapidary and various Earth Sciences including but not necessarily limited to Geology, Paleontology and Mineralogy. It shall be a particular purpose of the corporation to provide education in these fields to its members and the general public, especially to youth and student groups.



The Midwest Federation of
Mineralogical and
Geological Societies



The American
Federation of
Mineralogical Societies

GENERAL MEETINGS

Third Thursday of the Month, except for January (4th Saturday), December (1st Sunday), and summer break (June, July, August). Juniors meet at 5:30 p.m.; adults meet at 6:00 p.m.

Summer Break (no meetings)

September 15, 2022

October 20, 2022

November 17, 2022 (Annual Business Meeting)

December 4, 2022 (Christmas Party)

BOARD MEETINGS

Until further notice, Board Meetings will be held at 6:30 on the first Thursday of each month.

Next Board Meeting:

Thursday, September 1, 2022 at 6:30 p.m.

Vera Lyman's Residence

Persons of general membership are invited to attend Board meetings and offer agenda items.

The deadline for submissions to the P&S is the last Sunday of each month. I look forward to your items.



**Please continue to do your part.
Wear a mask to meetings.**

Graphic borrowed from <https://dhhs.ne.gov/Pages/Coronavirus.aspx>

**Check out the
Sunday Fun-Day Auction
on our Facebook page
([https://www.facebook.com/
groups/223555904325876](https://www.facebook.com/groups/223555904325876))
most Sundays
from 10 a.m. to 8 p.m.**

Sunday Fun-Day Auctions are the only times that sales are permitted on this site.

AUGUST BIRTHDAY GREETINGS

Rowdy Cropp
Jeff Kubitz
Nyky Lytle
Karen Messenger



All articles, tidbits, and photos not individually identified as being contributed to this publication are provided by the Editor.

PRESIDENT'S MESSAGE

by Jayne Beer (and photos)

Hello, rock friends! I hope you have all had time to get out and do some rock collecting or make it to some gem shows. If you do some research, you can find many shows and swaps within a few hours of Lincoln.

Since my last note to all of you, we have been to Missouri. We stopped at Dirty Girls Rock Shop in Lake Ozark, Missouri. We also stopped and checked out one river area - we didn't find much. Corey and I also went to the Canton South Dakota rock swap. We took merchandise and set up to sell. It was a very nice swap. They had great attendance. We met some wonderful new rock folks. The swap was run very well, I would recommend attending this swap either as a customer or a vendor.

The next day (July 31), the club had planned a field day to Morrill Hall in downtown Lincoln. We had a small group attend this trip. It was an incredibly good time going back to the museum. There is a whole 4th floor that is remodeled and is very interactive for the kids. We took our grandson, Ja-zeil and his friend, Trevor.

We have talked about another local field trip coming up soon. Lincoln has a cave! It is Robbers Cave. I have never been on a tour of this cave and I would really enjoy exploring that cave. Watch the Facebook page for further information. We have also talked about going to the Crawford rock swap over Labor Day weekend. They have a great swap. A really large swap for a small community. They also have rock collecting field trips.

We continue to try to come up with ideas of ways to get together with club members over the summer. Please let us know if you have any ideas of things to do. Contact any of us on the board. THIS IS YOUR CLUB! Please share with us what you want from your club. I would love to get more people active and attending activities. Hope to see you all soon! Cheers!



TIDBITS FROM WOOLY

by Charles "Wooly" Wooldridge (and photos)



Recently Jackie and I spent a week in the Badlands of South Dakota. We parked our camper at the White River KOA campground. It is a beautiful area, fairly inexpensive, with all the amenities, shade at every campsite, and close by Badlands National Park. I do not recommend camping at the park campgrounds as there is no shade.

Our National Parks lifetime permit provides free entry into the park. There is a loop drive with many scenic points of interest. The geology is amazing! The visitors center has a gift shop, museum, and working paleontological lab. The paleontologist working the lab was familiar with the UNL paleontologists and had worked with Phil Geib, who is an archeologist at UNL and club member. Ed, a smaller animal paleontologist, showed me on a map, locations for rock hounding. Chase, a docent, also circled places on the map where he looks for Fairburns, chalcedony, and other lapidary materials. All these spots were located in the Buffalo Gap National Grasslands. It is illegal to collect in the National Park.

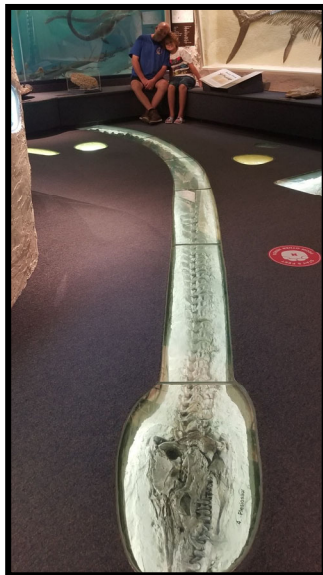
We collected in several locations, finding black chalcedony, petrified wood, and Fairburn "signers". I was searching for Lakota Blue Chalcedony, but did not find any. The Black Chalcedony was a good find. It is solid with some agatization, and it cuts and polishes well. An added benefit is that it fluoresces a strong green under ultraviolet light.

We took a couple of tours while in the Badlands. The first was a helicopter tour over the National Park. It was truly amazing to view the geological formations from the air! We then toured an area by horse. It was a totally different perspective. If you haven't spent time in the Badlands of South Dakota, I highly recommend it. It's not that far and there is much to do! There are many other attractions nearby including the Black Hills, hot springs, Mt. Rushmore, and Crazy Horse, just to name a few.

On another note, the large petrified tree stump I found this last spring is going to be excavated August 2nd and 3rd. I'll tell you all about it next month.



Our old friend Pleezy



Ja-Zeil

Ja-Zeil & Trevor



2022 BOARD OF DIRECTORS

President

Jayne Beer, 402.890.3307, JBeer60070@aol.com

1st Vice-President

Brett Jurgens, 402.850.3256, quartz89@aol.com

2nd Vice-President

Corey Beer, 402.466.6628

Treasurer

Vera Lyman, 402.464.6089

Secretary

Jeff Kubitz, 402.540.9395, jkubitz@neb.rr.com

Board Member

James Marburger, 402.430.6703, james.marburger@outlook.com

Board Member

Sharon Marburger, 402.429.3323, lgmc.editor@outlook.com

Board Member

Ed Ridge, 402.805.8248

Board Member

Charles Wooldridge, 402.975.0416, charles.wooldridgeii@gmail.com

2022 LONG RANGE PLANNING & BY-LAWS COMMITTEE

Charles Wooldridge, Chairman

1 year: Charles Wooldridge
Sharon Marburger

2 years: Vera Lyman
Jim Marburger

3 years: Jayne Beer
Brett Jurgens

2022 NOMINATING COMMITTEE

Charles Wooldridge, Chairman

1 year: Brett Jurgens
Sharon Marburger

2 years: Jim Atkins
Corey Beer

3 years: Jeff Kubitz
Vera Lyman

ADVERTISING INFORMATION

Advertising by rock / hobby business or interest is permitted with the approval of the Board of Directors. Contact the Editor with your proposed ad. The rate is set at \$20.00 per full page; \$10.00 per 1/2 page; \$5.00 per 1/4 page (minimum) per issue, paid in advance to the Club treasurer. Ads will be placed throughout the newsletter as space permits.

STANDING COMMITTEES

Audio/Visual:

Jayne Beer

Audit:

Ed Dvorak, Jayne Beer
James Marburger

Christmas Party:

Edward Ridge

Door Prizes:

Corey Beer, Brett Jurgens, Charles Wooldridge

Facebook:

James Marburger, Jayne Beer, Brett Jurgens

Field Trips:

James Marburger

Historian:

Sharon Marburger

Legislative Liaison:

Susy McMahan

Membership Record:

Edward Ridge

MWF Liaison:

Vera Lyman

Programs:

All Members

Property:

James Marburger

Recognition/Awards:

Ed Dvorak, Jayne Beer, Charles Wooldridge

Refreshments:

Vera Lyman

Show—2023:

Jayne Beer

Swap (Mid-Winter) 2023:

Sharon Marburger

Swap (Summer) 2023:

Jayne Beer & Corey Beer

Website:

Sharon Marburger

Youth Activities:

Brett Jurgens

MEMBERSHIP INFORMATION

Membership dues for the Lincoln Gem & Mineral Club are as follows:

•Adults (age 16 and over) - \$20 per year or \$30 per couple (within the same household)

•Juniors - \$3 per year (with a responsible adult)

All new memberships must be accompanied by a written application. Prospective members must gain Board approval and attend one regular meeting before paying dues. Applications are available on the website: <https://www.lincolngemmineralclub.org/about/membership>, or you may contact Treasurer Vera Lyman for a printed copy.

2023 MID-WINTER SWAP COMMITTEE

Chairman: Sharon Marburger
Club Booth: Vera Lyman
Finance & Swapper Bucks Sales: Vera Lyman
Floor Chairman: Corey Beer, Jayne Beer
Insurance: Vera Lyman
Publicity & Promotion: Jayne Beer, Jim Marburger
Web Master: Sharon Marburger
Youth Activities: Brett Jurgens

2023 SHOW COMMITTEE

Theme: Fools Gold (Iron Pyrite)
Chairman: Jayne Beer
Dealers & Demonstrators: Vera Lyman
Displays: Ed Ridge
Event Center Liaison: Vera Lyman
Finance/Ticket Sales: Vera Lyman, Jim Atkins
Floor Chairman: Corey Beer, Jayne Beer
Fluorescent Booth: Brett Jurgens
Forms: Sharon Marburger
LGMC Club Booth: Charles Wooldridge
Nebraska Gem Dig: Charles Wooldridge
Plants: Ed Ridge
Publicity & Promotion: Jim Marburger
Raffle: Gene Mullex
Ribbons & Recognitions: Sharon Marburger
Security: Vera Lyman
Show Flyer & Printed Program: Sharon Marburger
Silent Auction: Sharon Marburger
Youth Activities: Brett Jurgens

2023 SUMMER SWAP COMMITTEE

Chairman: Corey Beer, Jayne Beer
Vendors: Corey Beer, Sharon Marburger
Finance & Ticket Sales: Vera Lyman
Floor Chairman: Corey Beer, Jayne Beer
Insurance: Vera Lyman, Sharon Marburger
LGMC Club Booth: Sharon Marburger
Publicity & Promotion: Jayne Beer, Jim Marburger
Web Master: Sharon Marburger
Youth Activities: Brett Jurgens

SAFETY

by Eric Fritsch

Although not 100% rock related, I wanted to share an experience I had in my collection this morning. My circuit breakers had popped. I went to turn them back on and they kept popping. I could smell a faint electronic smoke and when I went to investigate it near a multi plug, it exploded into a fireball. Luckily, I saw the fire and could put it out with minimal damage, but it could have been a lot worse. Check the electrical plugs and make sure you haven't overloaded them. Check to make sure saws, grinders, lights, and laps don't overload your house. Get rid of flammable materials like boxes, paper, and so forth if possible. Stay safe in your hobby.

FIELD TRIP REPORT

by James Marburger

The club trip to visit Morrill Hall on July 31 was attended by 7 adult members, 1 junior member, and 1 junior guest. Everyone was having a great time until one of the critters bit off Sharon's head. So long, Sharon.



Mail Exchange Newsletters to:
Lincoln Gem & Mineral Club, Inc.
P.O. Box 5342
Lincoln, NE 68505-0342



Or e-mail newsletters to:
lgmc.editor@outlook.com

A color version of the Pick & Shovel is available at:
<http://www.lincolngemmineralclub.org/index.php/newsletters/current>

PICK & SHOVEL

Contact Jayne or Corey Beer if you are interested in attending lapidary classes.

PICK & SHOVEL STAFF

PUBLISHER:

Lincoln Gem & Mineral Club, Inc.
P.O. Box 5342
Lincoln, Nebraska 68505

EDITOR:

Sharon Marburger;
E-mail:
lgmc.editor@outlook.com

CIRCULATION:

Vera Lyman;
402.464.6089
Sharon Marburger;
402.429.3323

DEADLINE:

Last Sunday of the month.

Silversmithing Classes

The Jewelry Connection Ltd.

Indian Village Shopping Ctr.

13th & Arapahoe, Lincoln

Tuesday & Wednesday Evenings

7:00 p.m.—10:00 p.m.

Tuition: \$150 plus \$30 supply deposit

Tuesdays

Session 1: Jan 11—Mar 1
Session 2: Mar 8—Apr 26
Session 3: May 3—Jun 21
Session 4: Jun 28—Aug 16
Session 5: Aug 23—Oct 11
Session 6: Oct 18—Dec 6

Wednesdays

Session 1: Jan 12—Mar 2
Session 2: Mar 9—Apr 27
Session 3: May 4—Jun 22
Session 4: Jun 29—Aug 17
Session 5: Aug 24—Oct 12
Session 6: Oct 19—Dec 7

Contact: Jayne Beer 402-890-3307; jbeer60070@aol.com