

THE PICK & SHOVEL



The Official Publication of the
**Lincoln Gem &
Mineral Club, Inc.**

In association with



The Midwest Federation of
Mineralogical and
Geological Societies



The American
Federation of
Mineralogical Societies

The purpose of this corporation shall be to study, promote an interest in, and disseminate knowledge of lapidary and various Earth Sciences including but not necessarily limited to Geology, Paleontology and Mineralogy. It shall be a particular purpose of the corporation to provide education in these fields to its members and the general public, especially to youth and student groups.

GENERAL MEETINGS

Third Thursday of the Month, except for January (4th Saturday), December (1st Sunday), and summer break (June, July, August).

April 21, 2022

May 19, 2022

BOARD MEETINGS

Until further notice, Board Meetings will be held at 6:30 on the first Thursday of each month.

**Next Board Meeting:
Thursday, May 5, 2022 at 6:30 p.m.
Vera Lyman's Residence**

Persons of general membership are invited to attend Board meetings and offer agenda items.

CLUB EVENTS

No club-organized **field trips** at this time.

The Second Annual Summer Swap will be held at the Beer Family Farm on June 25 & 26, 2022. Outdoor event!! See pages 9 and 10 for the flyer and selling information.

APRIL BIRTHDAY GREETINGS

Corey Beer



Due to U.S. Postal Service changes, the new deadline for submissions to the P&S is the last Sunday of each month. I look forward to your items.

Please send your hobby-related photos with captions or explanations for publication in the Pick & Shovel. Field trips, lapidary projects, fossil projects, metal projects, wire wrapping, tumbling, or any other activity of interest to the club. Since we have limited meetings in person at this time, it is important to share with others what you are doing. Your project may inspire someone else.

Send via email (lgmc.editor@outlook.com) or via Facebook Messenger to Sharon Marburger (<https://www.facebook.com/mamamar7880>).



**Please continue to do your part.
Wear a mask to meetings.**

Graphic borrowed from <https://dhhs.ne.gov/Pages/Coronavirus.aspx>

PRESIDENT'S MESSAGE

by Jayne Beer

The 2022 Gem show is but a memory. A fabulous memory!

Thank you to all members who came to the show and brought friends! We had an amazing turn out! Almost 2400 adults! I talked to many people who saw a lot of things they were so happy about.



A big thank you to the vendors, demonstrators, and people who set up displays. Also a huge thank you to the people who worked together as a team to make this show run so smoothly. Last, but not least, thank you to all of the volunteers we had this year. I appreciate you signing up and showing up!

Please come to the meeting at Bethany Park on April 21st at 5:30 p.m. for the youth and 6:00 p.m. for adults. We would like your input on what went well with the show and what we might improve on. Also, we will talk more about the summer swap coming up on June 25th and 26th at the Beer Family Farm near Ashland, Nebraska.

Has anyone made any phone calls concerning the lapidary equipment? We can talk about that more.

Our program this month will be show and tell. Bring something you picked up at the show, something you found on a field trip, or something you just think others would enjoy seeing. You could also bring items to be identified; that is always fun.

I hope you all enjoy the spring weather that is here and perhaps you will have a chance to get out and do some early spring rock collecting. A fun and very blessed Easter to you and your families! Cheers!

All articles, tidbits, and photos not individually identified as being contributed to this publication are provided by the Editor.

TIDBITS FROM WOOLY

by Charles "Wooly" Wooldridge

Congratulations to Jayne Beer for putting on a great show! It was so wonderful to have the annual Lincoln Gem and Mineral Show back!

(continued)...Jim Null not only introduced me to the art of lapidary, he also "hooked" me on rockhounding in southeastern Nebraska. I started traveling the rivers with Jim in that corner of the state, searching for rocks, minerals, fossils, and artifacts.

Together we explored the Big Nemaha River, North and South Forks; and the Little Nemaha River, North and South Forks. We have walked practically every gravel bar on those rivers. Our main objective was the elusive and beautiful Lake Superior Agate, but we found lots of other treasures. Jim has especially keen eyesight for spotting Lakers. On one occasion, he found 32 in one day. We excavated a nearly complete ice age bison on the Little Nemaha near Dawson, finding almost everything except the skull.

Quicksand, gravel, and mud are always hazards, especially on the Little Nemaha River. We became trapped in quicksand at the same time. We were fortunate to be able to help each other escape. This is where I learned the importance of the "buddy system" and to always have a walking stick of some sort. It can be used to insert down the side of your leg to break the vacuum that keeps you stuck. It can be laid flat to give you leverage and be used for someone to pull you out.

Once or twice a summer we would travel east to the Mississippi River to find Lakers. Back in the eighties, gravel quarries weren't so insurance concerned and they would let you look through their gravel piles as long as you didn't interfere with workers. One company in particular issued us cards that gave us permission to be in their quarries near Muscatine, Iowa. I remember standing in front of an oversized pile as the elevator was adding to the pile. It was like standing at a conveyor belt as the gravel flowed down, allowing us to pick off the agates. In later years, none of the quarries would allow access. I guess "those were the days"...

**2022 Show
Attendance
2,393**



JUNIORS

by Brett Jurgens, Junior Co-leader

Well, we made it through the show, and it was AWESOME! After not having the show for two years, it was amazing to see everyone come together and help out on such a great show. We had amazing dealers with their offerings, a large number of great displays, and a huge turnout of attendees. A big thank you to all the juniors and parents who volunteered their time! Several of you stayed late, signed up for multiple shifts, and went above and beyond. The Junior Booth is great exposure for the junior program, and a favorite spot of the show. It also helps fund youth activities throughout the year.

Now that the show is over, we can focus on upcoming events for the year. We have our April meeting coming up on April 21st at 5:30 p.m. Bring your specimen kit and we will have a short lesson and a specimen for you to take home.

Then there is the Summer Swap on June 25th and 26th at the Beer Family Farm. It was such a blast last year, and it is a great place to pick up some pieces for your collection. I encourage all junior members to attend. We will also have a smaller junior booth with the gem dig there, so I will be looking for some volunteers again to help man it.

Again, thank you for all who helped out with the show!



**A special huge thank you to
Cathy Talmadge of the Omaha Club
for running the Fluorescent Booth**

Silversmithing Classes

The Jewelry Connection Ltd.

Indian Village Shopping Ctr.

13th & Arapahoe, Lincoln

Tuesday & Wednesday Evenings

7:00 p.m.—10:00 p.m.

Tuition: \$150 plus \$30 supply deposit

Tuesdays

Session 1: Jan 11—Mar 1
Session 2: Mar 8—Apr 26
Session 3: May 3—Jun 21
Session 4: Jun 28—Aug 16
Session 5: Aug 23—Oct 11
Session 6: Oct 18—Dec 6

Wednesdays

Session 1: Jan 12—Mar 2
Session 2: Mar 9—Apr 27
Session 3: May 4—Jun 22
Session 4: Jun 29—Aug 17
Session 5: Aug 24—Oct 12
Session 6: Oct 19—Dec 7

Contact: Jayne Beer 402-890-3307; jbeer60070@aol.com

2022 SHOW

by Sharon Marburger (photos by Sharon Marburger)

The Club had a fabulous show this year. Lots and lots of people attended; there was a good amount of club members working; there were many spectacular exhibits; and the club was able to raise some money for various activities.

This year, we implemented, once again, voting by attendees to choose their favorite exhibits and determine which display was the most educational. The results are below.



This display of Minerals from the Congo by Omaha Club member Eric Fritzsich was voted the Most Educational



This quartz display by Mike and Donnette Stiles (who are not club members) won People's Choice First Place

2022 SHOW - CONTINUED

continued from page 4



This display of Crooked River Petrified Wood from Oregon by Brett Jurgens and James Marburger won People’s Choice Second Place.



This display of Lake Superior Agates by Corey Beer won People’s Choice Third Place.

ROCKY PUNS

(Aivaras Kaziukonis and Justė Kairyte-Barkauskienė) provided by Eric Fritsch

What did the stone say when he ended up at the bottom of the hill?
That’s how I roll.

Which rock group is made up of four men who can’t sing?
Mount Rushmore.

How do geologists like to relax?
In rocking chairs, of course!

Available
for Purchase:
Diamond Pacific
Genie Polishing
Machine
\$2000⁰⁰
New Condition.

See
Jayne Beer
for more
information

MARCH GENERAL MEETING

Lincoln Gem and Mineral Club Meeting March 17, 2022

Meeting called to order at 6:00 p.m. by President Jayne Beer. 26 members in attendance including Juniors.

No minutes from last meeting.

Treasurer Report read by Vera Lyman. Motion to accept the Treasurer's report by Jim Marburger and 2nd by Charles Wooldridge. Motion Passed.

Announcements:

Club Dues are due. At this time, we have a total of 54 members.

Old Business:

The lapidary equipment needs to be moved from current location. It sat for two years with no classes. Many good questions came up for discussion. Where and when to move the equipment? Is there interest in a lapidary class? Should we have a Grant written up for this? Rent, Liability Insurance and Utilities needed. Who would teach the class? Also, the possibility of finding a building in a smaller town outside of Lincoln. Rent might be less expensive. Moving the equipment to the Beer Farm after the Rock Swap was also mentioned. Motion to table discussion until next meeting by Charles Wooldridge and 2nd by Jim Marburger. Motion Passed.

New Business:

None.

Show Business:

Show Postcards are ready to get out to the public. Signup lists for show volunteers are ready. Will have voting this year for Displays. The attending public will now vote for Best of Show, Most Educational, and possibly Most Colorful.

Charles Wooldridge was presented an award for Past President and Outstanding Service.

Jim Marburger's birthday was announced and celebrated with cake.

Motion to adjourn by Charles Wooldridge and 2nd by Vera Lyman. Motion passed. Meeting adjourned at 7:06 p.m.

QUICK TRIP

by Sharon Marburger

Jim and I made a quick trip to California to deliver family furniture and heirlooms to the kids. We had beautiful weather the entire time, until Concordia, Kansas on the return trip, where we ran into mist and fog the remainder of the ride home.

On the return trip, we stopped at Joshua Tree, California, to visit Kevin Kessler of Stellar Lubricants. We picked up 12 5-gallon buckets of mineral oil for rock saws to replenish our selling inventory. While there, we crawled through buckets, barrels, and piles of assorted rocks. We didn't have time to hunt the extra 7 acres of rocks. Maybe another trip?

We purchased a few items; Cedar City Blue Agate from Utah, surfite (similar to Fordite, but from surfboards), and ocean jasper. I spotted a cute little agate that Kevin said was a Croatian Agate. I included it in my display at the show.

18th Annual
Nebraska Artifact Show
Seward County Fairgrounds - Harvest Hall
Saturday, August 20, 2022
Seward, Nebraska
9:00 a.m. to 5:00 p.m.



Presentation:
(to be announced)

World Class Displays of
Prehistoric Stone Artifacts
from the Great Plains Region

Over 100 Display Tables
Free of Charge

Flint Knapping
Demonstrations

The Nebraska Artifact Show
is a non-commercial show sponsored by
the Nebraska Archaeological Society
No buying or selling of antiquities is permitted




Adults \$5
Children 12 & under free

Bring the Family
Concessions Available



This event is for the
exhibition of authentic
Native American artifacts
and related items.
No unlawful items allowed

For more information: 402-225-2525 or 402-326-9061



Photo by Scott Clark

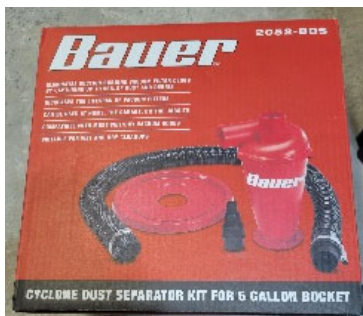
THE WORST JOB IN LAPIDARY

by James Marburger

I have been in the lapidary hobby for 60 years and have enjoyed all aspects of the hobby, starting with the excitement of finding a rock which has an intriguing outside. Now this rock is a beauty, but it is on to a tumbler to polish its outside. A beauty for sure, but what is inside? Now to a saw. Oh man! I am hooked. Saw-saw-saw.

Whoa, the saw is full of rock dust and oil. This oil must be cleaned up so I can continue the sawing of rocks. Armed with a putty knife, bucket, many rags, and some elbow grease, the cleaning begins. What an unbelievably dirty job that is. I can't tell you how many saw cleanings I have done, from a 6-inch trim saw to the big boy 24-inch saw. There must be a cleaner and easier way to tackle this job.

Fast forward to 2022. I have just found a way to clean the saw with a shop vacuum cleaner. Now it is not just a shop vacuum; that would introduce saw oil to the filters and foul the shop vacuum. By adding a cyclone dust separator to the shop vacuum, it will collect all the dust or oil before it enters the shop vacuum. Harbor Freight has the Bauer cyclone dust separator kit for a 5-gallon bucket for a cost around \$40.00. Add a 5-gallon bucket and a length of soft tygon one inch tubing to reach the bottom back of the saw and you have a mean cleaning machine. On the suction tygon tubing, a screen should be added to prevent chunks from plugging the hose. Start the vacuuming with the heavy sludge first, then the "cleaner oil" to flush the tubing of the heavy sludge.



This is my dirty saw

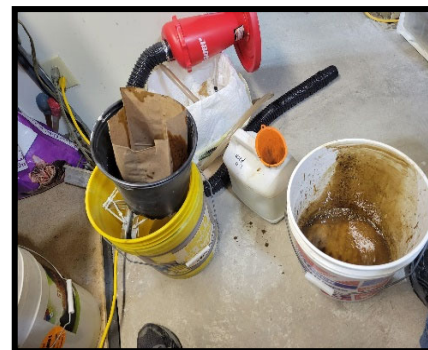


My saw after cleaning

With the shop vacuum setup, I now can clean the saw in about 15 minutes instead of hours of dirty work with oil to the elbows. One side note is knowing how much oil is in the saw since the bucket is only 5-gallons. I suggest emptying the bucket after 3 gallons to prevent overfilling.



Inline setup



Oil moved to recycler

Once the oil has been vacuumed, the oil sludge can be filtered by placing it in a brown paper bag that is placed in a bucket with holes in it. This bucket is placed over another bucket to catch the filtered oil. I use a plastic plant pot to hold the paper bag which is a bit larger than a paper lunch bag. The oil will filter and the sludge will stay in the bag. I leave the sludge bag draining until more oil is needed to be filtered. This bag can be placed in a plastic trash bag and sent with the trash to the dump. The filter can be upscaled to use large paper groceries bag if larger amounts of oil need filtered.

Good luck and happy cleaning your saw.

TRIBOLUMINESCENCE

from Mini Miners Monthly, March 2022, Vol. 14 No. 9

What you need: Two clear quartz crystals. You don't want to use really nice, collector-quality crystals. Get two average, "I don't care if I damage them" crystals because, well, you are going to damage them.

What to do: Hold the edge or termination of one crystal on the face of the second crystal. Push the two crystals together as hard as you can. While still pushing them together, rub the first crystal across the face of the second crystal. You probably won't see anything with the lights on, so . . .

Now, turn the lights off in your room and repeat the steps. You will see a flash of yellow light inside the second quartz crystal!

What is happening here?

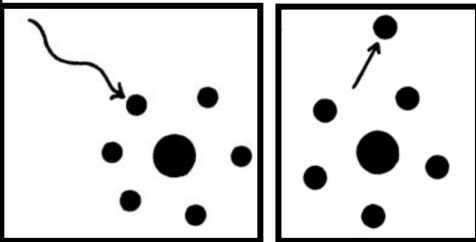
This is a special property called "Triboluminescence." "Luminescence" means "light." "Tribo-" means "to rub." So, this is light created by rubbing, in this case, one crystal against another. Scientists really don't know why this works. It could have something to do with the pulling apart of electrical charges that quickly reconnect.

WHAT IS FLUORESCENT COLOR?

from Mini Miners Monthly, February 2022, Vol. 14 No. 2

Think of it this way. You are bouncing on a trampoline. And you use the energy in your muscles to push on the trampoline which bounces you high in the air. The trampoline pushes you up. But you can't stay there. You fall back onto the trampoline and the energy of you falling pushes down on the trampoline again.

Ultraviolet light does this to an electron in an element. When ultraviolet (UV) light falls on some mineral specimens (left), the energy of the UV light adds energy to electrons in the mineral and causes them to jump (right).



But, they can't stay there, so they return to their normal energy level. And when they do, they give off energy.

That energy comes to your eyes as fluorescent light. You can see this light with your eyes as bright white, orange, red, yellow and blue colors. These colors are brighter and sharper than most colors that we normally see every day. And so they are called fluorescent colors.

WHAT CAUSES FLUORESCENCE?

from Mini Miners Monthly, February 2022, Vol. 14 No. 2

Not all minerals fluoresce. In fact, most minerals do not fluoresce under ultraviolet light. So why is it that some special minerals fluoresce? The minerals that do fluoresce have what mineralogists call activators.

An activator can be a small amount of an element that is trapped inside the mineral when it formed. This element is not part of the chemical formula of the mineral: it is just mixed in the crystal. Some minerals are fluorescent because they have two different elements trapped in them. These are called co-activators. They are also called impurity activators.

In some minerals, fluorescence is created by the reaction of the ultraviolet light with the elements and molecules in the mineral itself. These are called intrinsic activators. Autunite and Scheelite are two examples. Scheelite's chemical formula is calcium tungstate (CaWO_4). Careful scientific study has shown that the blue fluorescence found in Scheelite is caused by electrons moving in the tungstate ion in the Scheelite crystal. (An "ion" is a molecule that needs to connect with another element or molecule).

Another activator is called a defect activator. Every mineral has a crystal structure. But in nature, it is not unusual for a crystal structure to have a defect, that is, something that is not 100% perfect. These defects can sometimes cause fluorescence under ultraviolet light.

BENCH TIPS BY BRAD SMITH

Smart Solutions for Your Jewelry Making Problems
[Amazon.com/author/bradfordsmith](https://www.amazon.com/author/bradfordsmith)

COLORING EPOXY

There are two ways to add color when you are using epoxies. The first is to add a powdered material like colored chalk, charcoal, or powdered colors from an art supply store. One that I particularly like is a set of pastel glitter powders. A second way is to add a liquid pigment like nail polish, model airplane paint, or tinting pigments from a marine supplies store.

In preparing epoxy for use, the important things are to use exactly equal parts of the two components and to thoroughly mix them together. Coloring material can be added at any time. If I'm making just a small amount, I squeeze out equal sized droplets onto a piece of scrap paper or aluminum foil and mix thoroughly with a toothpick.

To mix larger amounts of epoxy, I use a gram scale to weigh the first component. Then I zero the scale and weigh out the same amount of the second component, add coloring if needed, and mix.

If you are using 5-minute epoxy, the mixing needs to move quickly. But I like to work carefully when adding color. So I squeeze out equal sized droplets side by side on the scrap paper. Then I work with just one of the droplets to add the colors. The 5-minute clock only starts when you mix in the second droplet.

TRY A TOOTHPICK

The round, stronger toothpicks have a multitude of uses on the jewelry bench. I use them for mixing epoxy resin, for applying paste solder, and with Zam for polishing in tight spots.

Toothpicks are also handy for holding a small faceted stone while setting it. Just break off the sharp tip, mold a little beeswax over it, and press it onto the table of your stone



The Nebraska Gem Dig is always a big hit. Don't worry. Corey is adding to it (salting), not taking away.

Over 1,300 Raffle Tickets Sold at the Show!

LINCOLN GEM & MINERAL CLUB
HOSTS ITS SECOND ANNUAL

Summer Rock Swap

June 25 & 26, 2022

Saturday 9 a.m. - 6 p.m.

Sunday 10 a.m. to 4 p.m.



Beer Family Farm

18701 Ashland Road, Ashland, Nebraska

Admission: Adult \$3.00; Kids 15 and under FREE

Help the Lincoln Food Bank replenish its shelves.

Bring canned items for the Food Bank.

Swap is open to the public, for both selling and buying.
Everyone is welcome!

**Family
Friendly**

Jewelry

Fossils

**Silent
Auction**

**Buy
Sell
Trade**

**Lapidary
Supplies
&
Equipment**

**Rocks
&
Minerals**

If you are interested in being a vendor, go to
<https://www.lincolngemmineralclub.org/happenings/other-events>
for more information and to fill out the Advanced Reservation form
or let Corey or Sharon know at the contact info shown below.

LINCOLN GEM & MINERAL CLUB

Box 5342

Lincoln, NE 68505-0342

Contact Corey Beer at 402.890.9155 or

Sharon Marburger at 402.429.3323; lgmc.editor@outlook.com.

2022 Second Annual Summer Rock Swap

hosted by Lincoln Gem & Mineral Club, Inc.

Calling all Rock, Gem, Mineral, Fossil, & Jewelry Vendors!

Saturday, June 25, 9 a.m. to 6 p.m. / Sunday, June 26, 10 a.m. to 4 p.m.

18701 Ashland Road, Ashland, NE 68003

This is a private acreage between Ashland and Ceresco, and about midway between Lincoln and Omaha.

- * Vendors to swap or sell geology or hobby-related items only.
- * 10'x10' Outdoor Space, no electricity, \$25, no table. Table rental an additional \$10 per 8-foot table, reservations only.
- * Assorted booth sizes in rustic Barn Space, covered, electricity available, tables included. Not air conditioned. See website for floor plan and booth rates. Booths assigned on a first come, first served basis. Provide top 3 choices in case first choice is no longer available. No guaranteed barn space unless it is reserved in advance and confirmation is received from LGMC.
- * Premium spaces and table rental guaranteed only by Advanced Reservation.
- * Reservations preferred, but not mandatory. Spaces not reserved by date of swap will be made available to those not having advanced reservation. Check or PayPal will be accepted the day of the swap.
- * Vendor will provide its own table(s) if rentals not reserved in advance.
- * Vendor will provide its own awning.
- * Friday setup noon to 8 p.m.; Saturday setup 7 a.m.
- * Grill-out supper at 6 p.m. on Saturday. Voluntary donations accepted for meal.
- * If the swap is cancelled due to weather or Lancaster County Directed Health Measures, space fee will be refunded.
- * Vendors are responsible for collecting Nebraska State Sales Tax and remitting it to the State.

ADVANCED RESERVATION

Reservation and payment due no later than May 25, 2022.

- Outside Space (\$25 per each 10'x10' unit), _____ Number of units, _____ Number of tables needed at \$10 per each 8-ft. table
- Inside Space (See attached floor plan for booth rates), Booth choices (1st) # _____ (2nd) # _____ (3rd) # _____
Spaces assigned on a first-come, first-served basis.

Name: _____ Business Name: _____

Address: _____ Phone No.: _____

Email: _____ Amount Enclosed: _____

Type of Product to be Sold: _____

Send your check with a copy of this Advanced Reservation form to LGMC, P.O. Box 5342, Lincoln, NE 68505
OR

Submit electronically on the LGMC website, www.lincolngemmineralclub.org. Payment made through PayPal (link on website).

Questions:
Contact Corey Beer at 402.890.9155 or Sharon Marburger at 402.429.3323.

2022 BOARD OF DIRECTORS**President**

Jayne Beer, 402.890.3307, JBeer60070@aol.com

1st Vice-President

Brett Jurgens, 402.850.3256, quartz89@aol.com

2nd Vice-President

Corey Beer, 402.466.6628

Treasurer

Vera Lyman, 402.464.6089

Secretary

Jeff Kubitz, 402.540.9395, jkubitz@neb.rr.com

Board Member

James Marburger, 402.430.6703, james.marburger@outlook.com

Board Member

Sharon Marburger, 402.429.3323, lgmc.editor@outlook.com

Board Member

Ed Ridge, 402.805.8248

Board Member

Charles Wooldridge, 402.975.0416, charles.wooldridgeii@gmail.com

2022 LONG RANGE PLANNING & BY-LAWS COMMITTEE

Charles Wooldridge, Chairman

1 year: Charles Wooldridge
Sharon Marburger

2 years: Vera Lyman
Jim Marburger

3 years: Jayne Beer
Brett Jurgens

2022 NOMINATING COMMITTEE

Charles Wooldridge, Chairman

1 year: Brett Jurgens
Sharon Marburger

2 years: Jim Atkins
Corey Beer

3 years: Jeff Kubitz
Vera Lyman

ADVERTISING INFORMATION

Advertising by rock / hobby business or interest is permitted with the approval of the Board of Directors. Contact the Editor with your proposed ad. The rate is set at \$20.00 per full page; \$10.00 per 1/2 page; \$5.00 per 1/4 page (minimum) per issue, paid in advance to the Club treasurer. Ads will be placed throughout the newsletter as space permits.

STANDING COMMITTEES**Audio/Visual:**

Jayne Beer

Audit:

Ed Dvorak, Jayne Beer
James Marburger

Christmas Party:

Edward Ridge

Door Prizes:

Corey Beer, Brett Jurgens, Charles Wooldridge

Facebook:

James Marburger, Jayne Beer, Brett Jurgens

Field Trips:

James Marburger

Historian:

Sharon Marburger

Legislative Liaison:

Susy McMahan

Membership Record:

Edward Ridge

MWF Liaison:

Vera Lyman

Programs:**Property:**

James Marburger

Recognition/Awards:

Ed Dvorak, Jayne Beer, Charles Wooldridge

Refreshments:

Vera Lyman

Show—2023:**Summer Swap—2022:**

Jayne Beer & Corey Beer

Website:

Sharon Marburger

Youth Activities:

Brett Jurgens

MEMBERSHIP INFORMATION

Membership dues for the Lincoln Gem & Mineral Club are as follows:

- Adults (age 16 and over) - \$20 per year or \$30 per couple (within the same household)

- Juniors - \$3 per year (with a responsible adult)

All new memberships must be accompanied by a written application. Prospective members must gain Board approval and attend one regular meeting before paying dues. Applications are available on the website: <https://www.lincolngemmineralclub.org/about/membership>, or you may contact Treasurer Vera Lyman for a printed copy.

Mail Exchange Newsletters to:
Lincoln Gem & Mineral Club, Inc.
P.O. Box 5342
Lincoln, NE 68505-0342



Or e-mail newsletters to:
lgmc.editor@outlook.com

A color version of the Pick & Shovel is available at:
<http://www.lincolngemmineralclub.org/index.php/newsletters/current>

PICK & SHOVEL

**There were 50 displays at the show this year,
the most we've had in a long, long time.**

**We received over two big barrels of food at the show
for the Food Bank! Thank you, visitors!**

PICK & SHOVEL STAFF

PUBLISHER:

Lincoln Gem & Mineral Club, Inc.
P.O. Box 5342
Lincoln, Nebraska 68505-0342

EDITOR:

Sharon Marburger; E-mail: lgmc.editor@outlook.com

CIRCULATION:

Vera Lyman; 402.464.6089
Sharon Marburger; 402.429.3323

DEADLINE:

Last Sunday of the month.

2022 SUMMER SWAP COMMITTEE

Chairmen: Corey Beer, Jayne Beer
Vendors: Corey Beer, Sharon Marburger
Finance & Ticket Sales: Vera Lyman
Floor Chairmen: Corey Beer, Jayne Beer
Insurance Vera Lyman, Sharon Marburger
LGMC Club Booth:
Publicity & Promotion: Jayne Beer, Jim Marburger
Silent Auction: Sharon Marburger
Web Master: Sharon Marburger
Youth Activities: Brett Jurgens