



PICK & SHOVEL

June 2016, Volume 58, Issue 10

Editor: Sharon Marburger

The purpose of this corporation shall be to study, promote an interest in, and disseminate knowledge of lapidary and various Earth Sciences including but not necessarily limited to Geology, Paleontology and Mineralogy. It shall be a particular purpose of the corporation to provide education in these fields to its members and the general public, especially to youth and student groups.

BOARD OF DIRECTORS

President

Ed Dvorak, 402.946.3041
ed20649@windstream.net

1st Vice-President

Jayne Beer, 402.890.3307
JBeer60070@aol.com

2nd Vice-President

Charles Wooldridge, 402.975.0416
charles.wooldridge@nebraska.gov

Treasurer

Vera Lyman, 402.464.6089

Secretary

Jim Marburger, 402.430.6703
jm24122@windstream.net

Board Member

Carolyn Ashmore, 402.325.8878
saturn1_101@hotmail.com

Board Member

Ed Ridge, 402.477.8469

Board Member

Andrew Tiedje, 402.219.2323
silverjinnstudios@gmail.com

Board Member

Sharon Marburger, 402.429.3323
lgmc.editor@windstream.net



2016 MEETINGS AND ACTIVITIES

Regular monthly meetings are held at 7:00 p.m. at the Bethany Park Shelter House. Youth activities begin at 6:00 p.m. Board Meetings begin at 6:30 p.m.

Summer Break from Business, but join us in social activities!

Thursday, Sep. 15

Thursday, Oct. 20

Thursday, Nov. 17 (Annual Business Meeting)

Sunday, Dec. 4 (Christmas Party & Awards)

Board

Wednesday, August 31 (September Meeting):
To be determined

Activities

Campout at Big Indian Recreation Area

With Daily Field Trips

June 24 - 26

See article on page 3

Grinding Party at Pioneers Park Nature Center, Prairie Building

Sunday, July 10, 2016

1:00 - 4:00 p.m.

Picnic in the Park to follow



National Show

July 29-31, 2016

“Treasures of the Northwest”

Presented by the Willamette Agate
and Mineral Society, Inc.

Linn County Expo Center
Willamette Event Center
3700 Knox Butte Rd.
Albany, Oregon

Multi-Federation Field Trip is the week
after the show - Prineville, Oregon

JUNE BIRTHDAYS

♥ Carolyn Ashmore

Jayne Beer ♥

🟡 Bruce Collamore

Ellie Lyman 🟡

🟢 Ed Ridge

Breanna Suhr 🟡

♥ Sarah Suhr

GENERAL MEETING MINUTES

General Meeting Minutes for May 12, 2016
Bethany Park Shelter House
James Marburger

- ◆ Meeting called to order at 7:00 p.m. by President Ed Dvorak.
- ◆ Attendance: Junior members - 8
Adult Members - 24
- ◆ Pledge of Allegiance recited.
- ◆ Minutes of the last meeting were published in the Pick and Shovel. Motion to accept by Bob Gruit, second by Jim Atkins. PASSED.
- ◆ Treasurer Report furnished by Vera and read by Ed. Motion to accept by Charles Wooldridge, second by Pat Dvorak. PASSED.

OLD BUSINESS:

- ◆ Roadside clean up is scheduled for Saturday, May 14 at 1 p.m. Meet at the old Rest Area on Hickman Road.
- ◆ Rock Party to follow at the Marburgers in Hickman. We will eat at 4 p.m. for those who do not make the clean-up. Everyone is welcome.
- ◆ July 10 is the Grinding Party at Pioneers Park Nature Center, Prairie Building. Setup at 12 noon and open to public from 1-4 p.m. Picnic in the park afterwards. Everyone is welcome to both events. If you have never attended, please come out and see what the club is doing and partake in the fun. Many members make it fun and it shows support for the club.
- ◆ June 24 – 26 is the Rock Campout at Big Indian Recreation Area. There will be field trips each day and campfire story telling each night with food and fun. More information will be coming.

NEW BUSINESS:

- ◆ The MWF Convention is August 19 -21 in South Bend, Indiana. We are allowed one delegate and one alternate for the meeting. If anyone would like to be a delegate or alternate, please step forward. Sharon might be able to be a delegate since she has given up the Editorship. Jim M. is a committee member so he is not able to be a delegate.
- ◆ Motion by Charles Wooldridge to pay a \$50 stipend to the delegate and alternate for travel expenses. Second by Paul Ashmore.
- ◆ The 2017 proposed Show Budget was presented. Motion to accept by Wooly, second by Andrew. PASSED.

PRESIDENT'S MESSAGE

by Sharon Marburger on behalf of Ed Dvorak



Summer is here and it is time to get out in the field to look for rocks and other specimens. Now is the perfect time - it's not too hot and humid yet. Remember to be safe while out collecting. Take plenty of drinking water and remember to drink it. We sometimes get so excited about the hunt that we forget to keep hydrated.

We hope to have a good turnout for the camping trip later this month. You can find information on the event elsewhere in this newsletter. It sounds like Wooly is planning some great field trips for us. It is a lot of work to plan these trips. Let's show our support to Wooly by participating.

The Annual Grinding Party is scheduled for July 10 at the Pioneers Park Nature Center, Prairie Building. It is still early, but mark your calendars so you don't forget. Even if you can't make the Grinding Party, join us for the Picnic in the Park that follows, starting shortly after 4:00 p.m. It is a potluck event and we usually grill burgers and hot dogs or brats.

I would like to thank all of our Military Veterans, active and inactive, for your service to our country. You are what has made this country a wonderful place to live.

We wish everyone a safe and patriotic Independence Day.

Be happy and stay safe.

Happy 4th



ANNOUNCEMENTS:

- ◆ The Norfolk Gem Club show will be May 14 & 15.
- ◆ Invitation to Corey Beer's graduation hog roast party was made to all LGMC members. Paper copies are on the table with a map and directions to the event.
- ◆ Motion to adjourn at 7:30 p.m. by Wooly, second by Andrew. PASSED.

Meeting adjourned to refreshments and program. The program was unable to be seen due to technical problems, so happy discussions happened.

BIG INDIAN CAMPING TRIP

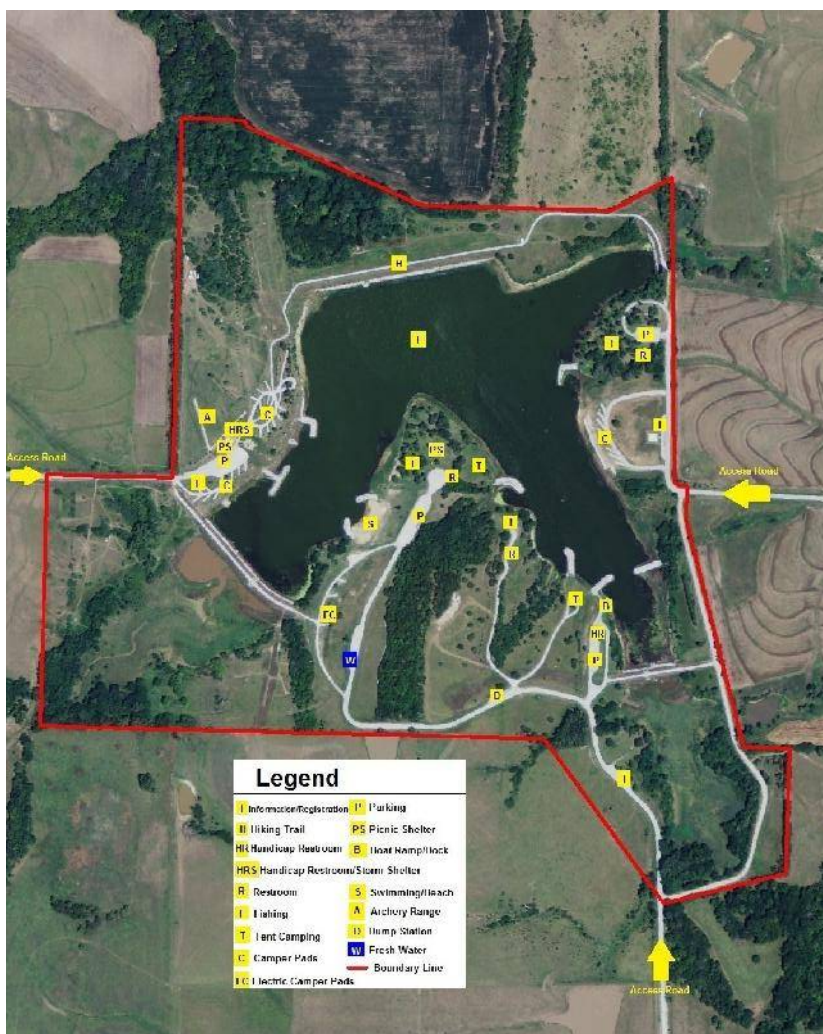
The weekend of June 25 will find us at the Big Indian Recreation Area, sponsored by the Lower Big Blue Natural Resources District (“LBBNRD”). Big Indian is located 6 miles east of Odell, Nebraska, off Highway 8. Because Big Indian falls under the purview of LBBNRD, a state park permit is not required.

Rules and regulations for the area are:

- ◆ No open fires except in places provided
- ◆ All pet must be on a leash
- ◆ Hunting and the discharge of firearms is prohibited except from October 1 through April 1 and only in designated areas
- ◆ Vehicles are confined only to roadways and parking areas
- ◆ Swimming allowed in designated areas only
- ◆ 15 M.P.H. speed limit
- ◆ Camping registration required at entry
- ◆ Remove all trash or place in an appropriate trash receptacle or dumpster if provided - No Fish
- ◆ Quiet hours are from 10 p.m. to 6 a.m.

Camping regulations are:

- ◆ All campers must register (this include motorhomes, travel trailers, fifth wheels, and tents)
- ◆ Fee is \$10/day (electrical) or \$5/day (non-electrical)
- ◆ A late fee of \$100 will be charged if camper is not registered within 30 minutes of arrival
- ◆ Campsite permit expires at 5:00 p.m. Campsite must be vacated by 5:00 p.m. unless you re-register
- ◆ Camping is first come, first served.
- ◆ Tent camping sites are not marked
- ◆ Camping is not allowed under picnic shelters
- ◆ Camping is limited to 14 days per 30 day period
- ◆ Only one camper allowed per electrical campsite
- ◆ Detach and place receipt on post or windshield where visible
- ◆ Insert fee inside provided envelope, and deposit in registration drop box
- ◆ Checks can be made to LBBNRD



Some members plan to begin their stay during the week prior to the 25th. Wooly is planning a Nemaha River field trip on Friday, June 24. A trip to the Little Blue River is being planned for the 25th. On Sunday the 26th, perhaps a trip to a gravel quarry, or around Odell, or maybe the museum at Fairbury; it is yet to be determined. Most likely the trip will be to where the majority wish to go.

Each evening, we will gather for the telling of tall tales and the eating good food; potluck meals are always a fun time. This trip is a wonderful chance to share in rockhound fellowship and getting better acquainted with others in the club.

We anticipate finding camping spots along the road marked with the blue “W” on the map. Wooly is hoping to save some spots on the west side of this road, at the tent camping area just past the swimming area. The Marburgers hope to get a pad to the left of the blue “W”, on the arced road. Some of us must have electricity! Come on out and claim your campsite!

Save the date and expect to have a good time!



ALAA NEWS

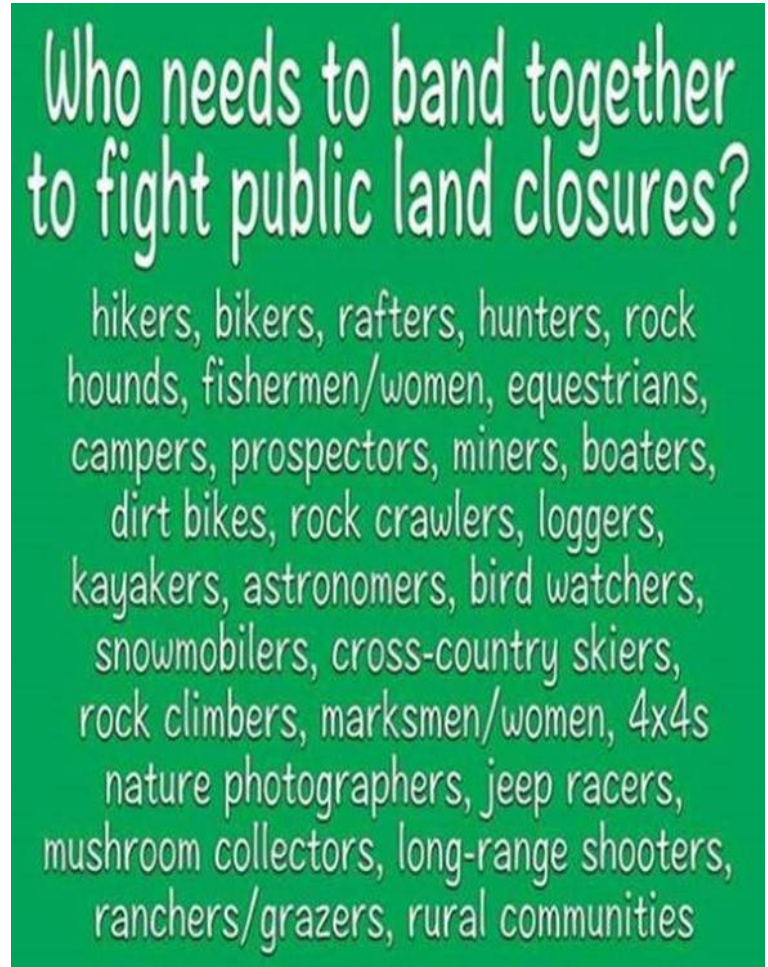
Excerpted by Tom Noe
(From the Jan.-Mar., 2016, ALAA Newsletter)

UTAH PUSHING TO REMOVE POLICE POWERS FROM BLM, FOREST SERVICE

By Pete Kasperowicz, Senior Editor, Washington Examiner
(March 22, 2016)

Utah's four House Republicans introduced a bill that would strip the Bureau of Land Management and U.S. Forest Service of their power to police federal lands, and give that power over to local cops. Rep. Jason Chaffetz and his three GOP colleagues from Utah introduced the Local Enforcement for Local Lands Act. The lawmakers say the growth of policing authority in both agencies has distracted them from their main mission of managing federal land, and has created conflicts with local authorities. They also say federal agents are not as trusted as local police, and should be removed. "Federal agencies do not enjoy the same level of trust and respect as local law enforcement that are deeply rooted in local communities," Chaffetz and other lawmakers said. "This legislation will help deescalate conflicts between law enforcement and local residents while improving transparency and accountability." "The BLM and U.S. Forest Service will be able to focus on their core missions without the distraction of police functions. This is a win all around," they added. A letter the Utah Sheriffs' Association sent to Chaffetz shows that federal police agents and their local counterparts are butting heads, and that local police believe the feds are intruding on local authority.

ALAA is the lobbying arm of the American Federation,
working on behalf of rockhounds
to keep public lands open and accessible to all,
including the elderly and handicapped.



LGMC is a
proud member
of ALAA

J J & L Rocks & Minerals

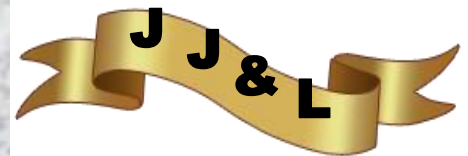
P.O. Box 68
Hickman, NE 68372

Lee Harrison
Eric Harrison
402.792.2337

330 Locust
Hickman, NE 68372

James Marburger
Sharon Marburger
402.792.2348

jimandjohn@jjlrocksandminerals.com
www.jjlrocksandminerals.com
jjlrocksmin - Ebay Username



Proudly serving
the hobby for
40 years

PLANNING THE 2017 SHOW**NEBRASKA ROCKS!**

by Sharon Marburger

Would you like to have a say in how our annual show is planned? Our 2017 Show Chairman, Jayne Beer, is still looking for a Special Features Chairman. Additionally, Andrew Tiedje volunteered to be chairman of the Club Booth, but he will not be able to attend the show, so if you'd like to assist Andrew by being "in charge" at the show, please contact him. If you are interested in chairing a subcommittee, please contact Jayne. If you are interested in being on a subcommittee, contact Jayne or the person listed as the chairman. A list of committee chairmen is on page 11 of this newsletter. There is always room for another volunteer who has great ideas, enthusiasm, or just wants to help. This is your chance to take the reins and help lead our Club to a successful show.

The success of our show is dependent upon a team of persons working together for the greater good. Each person's ideas are critical to achieve that success. If you are a newer member, this would be a wonderful opportunity for you to learn how a show comes together and to offer fresh ideas. Long-time members will gladly assist you and offer advice and their years of experience.

The 2017 Show theme is "Nebraska Rocks!". The focus will be on rocks, minerals, and fossils collected in Nebraska. All members are asked to plan for a display case at the show. There is still plenty of time to collect specimens in Nebraska and put together a display. Are you up for the challenge?

You have an upcoming opportunity to collect Nebraska material over the weekend of June 25. That is the club camping trip at Big Indian Recreation Area. Whether you choose to camp is up to you; you can still participate in the daily planned field trips. See the article on page 3 and contact Wooly for more information.

We are still looking for suggestions for anyone who has a special display of Nebraska material. For advertising purposes, we would like to have one, two, or three Special Features to focus on. If you have, or you know of someone who has, a remarkable display of specimens found in Nebraska, please let Jayne Beer, or any other Show Committee person or Board Member, know. We will begin our intense advertising in September or October, so the sooner we have the information, the more time we have to create spectacular advertisements.

A NOTE FROM THE EDITOR

by Sharon Marburger

Don't you guys get sick and tired of hearing about everything from Sharon's perspective?

I know we are all busy with our lives, and no one really feels like writing anything for the newsletter. Trust me, I have days like that, too. The last thing I wanted to do this weekend was to put together a newsletter! However, I volunteered to be editor, so I reminded myself that it is my duty to put out a decent newsletter.

However (and yes, there is always a "however"), the editor's job is to compile stories and information provided by the club members, to edit the grammar and punctuation of those stories so the author feels proud of what was submitted, and to format the publication so it is consistent and attractive. This does not mean that the editor should have the byline on nearly all of the articles and stories, as is the case in this newsletter.

So please, help your fellow club members to not be subjected to Sharon's viewpoint. Submit something each month for the newsletter. EVERYONE will thank you!

Silversmithing classes

Tuesday Evenings
7:00 p.m. - 10:00 p.m.

The Jewelry Connection Ltd.
Indian Village Shopping Ctr.
13th & Arapahoe, Lincoln

Tuition: \$120 plus \$30 supply deposit

Session 3: Apr 26 - Jun 14

Summer Break

Session 4: Aug 9 - Sep 27

Session 5: Oct 4 - Nov 22

Contact:

Jayne Beer 402-890-3307

Judith Bay 402-423-7058

or e-mail

jbeer60070@aol.com

FEBRUARY ROCK PARTY

by Sharon Marburger

The Rock Party was held on February 21 from 4 - 8 p.m. at Wooly's and Jackie's. There was a nice turnout of members, including: Judith Bay, Jayne Beer, Corey Beer, Andrew Tiedje, Allan Gossman, Brett Jurgens, Ed Ridge, Jim Marburger, and me. I apologize that I do not know the name of one woman who attended, and Rowdy Cropp was also in attendance.

After eating a wonderful array of foods at the potluck, we retired to the basement to check out the club library. The Board of Directors decided that it was time to eliminate the library because it had not been used in several years. With the advent of the Internet and all the readily available information, the paper library has become obsolete.

Members selected books and other publications they wanted for their personal libraries. There were many "oooohs" and "aaahhs" over what was available. Some items were selected for the youth group, and later given to Carolyn Ashmore for keeping. Several items were pulled out and set aside for putting on the Silent Auction at the show. I took several boxes of items to be added to the club history files. (As time permits, I will be scanning items and placing them on the website for member access.)

It was a successful rock party and everyone seemed to be pleased with their selections.



See how happy Judith and Jayne look? You can be this happy, too, by attending monthly rock parties!!

MINERAL MONKEYS

To earn the "Reaching Across Generations" badge in the Future Rockhounds of America program, the juniors were instructed to write an article about their senior mentor. The following is one such article.

MY GEM CLUB ELDER - JIM MARBURGER

by Ellie Lyman

Jim was born in Pawnee, Nebraska on March 17, 1952. His family was made up of his parents and 3 boys. His parents had a retail canvas manufacturing store in Humboldt when he was growing up. As a child his parents told all the kids they needed to have a hobby - his two brothers enjoyed photography or mechanics, but Jim was in to rocks! In fact, Jim joined the LGMC in 1970 when he was 18 years old.

Jim went to school at the University of Nebraska-Lincoln and graduated with a Bachelor of Science degree in Geology with a minor in Industrial Technology. Jim has worked with the Department of Natural Resources for the State of Nebraska since 1972. In 1977 he also started a rock business with his partners.

In 1994 Jim met his wife Sharon at his job, and they got married in 1999. Sharon is also a member of LGMC and they both help out with all of the club activities. This year I have learned many things about rocks from Jim, and he has even given me a book that had been his! He really does know a lot about rocks.

MARCH ROCK PARTY

by Sharon Marburger

The March Rock Party was held at The Jewelry Connection, and hosted by Jayne Beer and Judith Bay, on the 19th at 5 p.m. As always, there was an abundance of food, with this month's theme being "St. Patty's Day" fare.

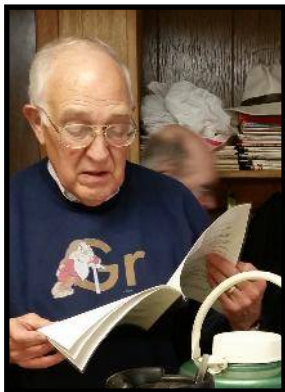
Others attending were Brian Beer, Corey Beer, Corey's Uncle Steve, little Jazzy Jazz, Bob & Pat Gemit, Ed Ridge, Paul & Carolyn Ashmore, and Jim & I. We ate, shared specimens, swapped stories, and worked some rocks.

We had a short discussion about how to put together a display case for the show. I took the AFMS Uniform Rules for reference. Afterwards, Jayne showed Jim some copper smithing.

As always, we had a fun time of fellowship with other hobby enthusiasts.



Part of the group (left to right): Ed Ridge, Uncle Steve, Brian Beer, Jayne Beer, Corey's arm, Jazz, Sharon Marburger, Paul Ashmore, Carolyn Ashmore



GEOLOGY DAY

by Sharon Marburger

Geology Day 2016 was a sad day and a happy day. It was happy because we got to spend time with our rockhound friends, sharing stories and specimens brought to the event. It was sad because not many people from the general public came through the event. There we were, armed with all sorts of free samples and information to share with those who attended, but with fewer than 20 people visiting, most of what we brought returned home with us.

This was an unusual turnout for either of our events sponsored by Lincoln Parks and Recreation, specifically, the Pioneers Park Nature Center. It was a fairly nice day, so we suppose the good weather had people doing other things, like yard work. The park, overall, was fairly empty - another unusual occurrence.

But, the day was still a happy one. Past club member, Glenn Lyman, and long-time member, Vera Lyman, visited. We had not seen Glenn since the dinosaurs roamed the earth! or so it seems. He was looking very well and appeared to have fun visiting with the club members present and taking in the displays.

As always, a big thank you to the Nature Center, especially to Charlie and Karen Messenger, who set everything up for us.



SPRING ROADSIDE CLEAN-UP AND MAY ROCK PARTY

by Sharon Marburger

Jim Marburger didn't sleep much the night of May 13. He was up and down, checking on the pork shoulders that were in the smoker. The sleep we got that night was filled with Applewood smoke, making dreams of sweet cooking. By morning, the pigs were done and looking GOOD!



We spent part of the morning pulling the shoulder roasts apart in preparation for pulled pork sandwiches.

The rest of the morning was spent in setting up for the Rock Party that would follow roadside clean-up.

The group met at the Hickman Rest Area at Highway 77 and Hickman Road to receive safety vests and assignments. We all scattered to our sections of road and began picking up litter. At first, it looked like we would be short of people, but we ended up having two extras. Additionally, two more people showed up after we were done cleaning.

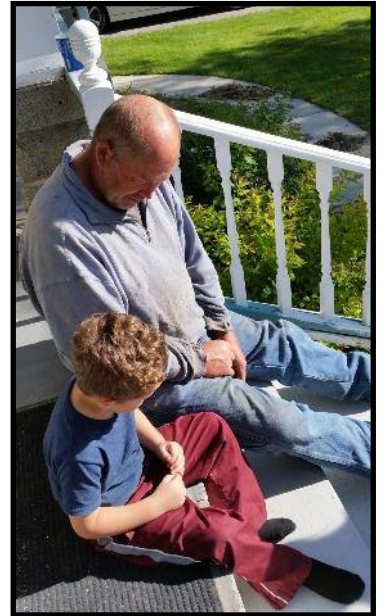
The area of Highway 77 for which we are responsible to keep clean seemed to be cleaner than in the past. At the end of cleaning, there was a total of 20 bags, none of which were full. We completed the clean-up in record time, approximately one hour.

Several of the trash picker-uppers had other engagements, so the group split up to attend the various functions. Those who chose to go to the Rock Party headed to the Marburgers. We sat around chatting and talking rocks until it was time to eat.

The food was delicious, as always, and we ate until we could eat no more.

The two Genie grinding units were on the front porch, so Andrew, Wooly, and Eddie started working on projects. I brought out some Australian opal I bought at a silent auction and we examined it in the sunlight. It had a lot of fire, but not much of it was oriented correctly to make anything. Those not working on projects sat around on the porch and just enjoyed the company and the weather.

It was a fun and relaxing time spent with friends. I suppose we will do it again in the Fall.



FIELD TRIP TO THE BARTELS MUSEUM

by Sharon Marburger

Sunday, May 1 was the day to visit the Bartels Museum at Concordia University in Seward, Nebraska. The museum was opened to LGMC for a special viewing. The museum is definitely worth visiting, and should you get the chance, take it.

The Bartels loved agates, particularly Brazilian agates. There were tons (literally) of the stone, along with Mexican agates, Lake Superior agates, and other agates; petrified woods; minerals; fossils; and other precious and semi-precious stones. There were lamps and carvings, too. We spent over an hour ogling the beauties, but a rock lover could easily spend much more time at this fantastic location.

My personal favorite was the three-dimensional stone "quilt" shown at the bottom of this page. Absolutely beautiful and awesome in the true sense of the word!



This is only a portion of a spectacular piece. Look at it closely to see all the different stones used, and the angles cut, to give the three-dimensional quilt pattern. It is truly remarkable and must be seen in person.



STANDING COMMITTEES

Audit	Ed Dvorak, Jayne Beer James Marburger
Christmas Party	Edward Ridge
Education / Librarian	Charles Wooldridge
Facebook	Andrew Tiedje
Field Trips	James Marburger
Geology Day Coordinator	Charles Wooldridge
Grinding Party Coordinator	Charles Wooldridge
Historian	Sharon Marburger
Legislative Liaison	Susy McMahan
Membership Record	Edward Ridge
MWF Liaison	Vera Lyman
Programs	Susy McMahan
Property	James Marburger
Recognition / Awards	Charles Wooldridge, James Marburger
Refreshments / Door Prizes	Vera Lyman
Roadside Clean-up	James Marburger
Scholarship	Vera Lyman
Show—2017	Jayne Beer
Swap—2017	Jayne Beer
Website	Jim & Sharon Marburger
Youth Activities	Carolyn Ashmore Susy McMahan

LONG RANGE PLANNING & BY-LAWS COMMITTEE

Jim Marburger, Chairman

1 year:	Edward Ridge Vacant
2 years:	Charles Wooldridge Sharon Marburger
3 years:	Vera Lyman Ed Dvorak

NOMINATING COMMITTEE

Jim Marburger, Chairman

1 year:	Vera Lyman Edward Ridge
2 years:	Robert Gritmit Sharon Marburger
3 years:	Jim Atkins Andrew Tiedje

ADVERTISING, SUBSCRIPTION, AND MEMBERSHIP INFORMATION

Advertising by rock / hobby business or interest is permitted with the approval of the Board of Directors. Contact the Editor with your proposed ad. The rate is set at \$20.00 per full page; \$10.00 per 1/2 page; \$5.00 per 1/4 page (minimum) per issue, paid in advance to the Club treasurer. Ads will be placed throughout the newsletter as space permits.

Subscription to the Pick & Shovel is \$15.00 per year for mailed copy.

Membership dues for the Lincoln Gem & Mineral Club are as follows:

Adults (age 16 and over) - \$15 per year or \$25 per couple (within the same household)
Juniors - \$2 per year (with a responsible adult)

All new memberships must be accompanied by a written application. Prospective members must gain Board approval and attend one regular meeting before being approved for membership.

2017 SHOW COMMITTEE

Chairman:	Jayne Beer
Dealers:	Vera Lyman
Demonstrators:	Vera Lyman
Displays:	Jayne Beer, Ed Ridge
Event Center Liaison	Vera Lyman
Finance & Ticket Sales:	Jim Atkins, Vera Lyman
Floor Chairman:	Ed Dvorak
Fluorescent Booth:	Bob Gritmit
Forms	Sharon Marburger
LGMC Club Booth:	Andrew Tiedje
Nebraska Gem Dig:	Charles Wooldridge
Plants:	Ed Ridge
Printed Program:	Sharon Marburger
Publicity & Promotion:	Jim Marburger
Ribbons & Recognitions:	Sharon Marburger
Security:	Vera Lyman
Show Flyer	Jayne Beer, Sharon Marburger
Silent Auction:	Sharon Marburger
Special Features:	
Web Master:	Jim & Sharon Marburger
Youth Activities:	Carolyn Ashmore

Mail Exchange Newsletters to:

Lincoln Gem & Mineral Club, Inc.
P.O. Box 5342
Lincoln, NE 68505-0342

Or e-mail newsletters to:
lgmc.editor@windstream.net



A color version of the Pick & Shovel is available at:
<http://www.lincolngemmineralclub.org/index.php/newsletters/current>

PICK & SHOVEL

The *Pick & Shovel* is the official publication of the Lincoln Gem & Mineral Club, Inc., Lincoln, Nebraska. Articles and items appearing within may be reproduced in other club bulletins, provided proper credit is given to the *Pick & Shovel* and the author.

YOUR PICK & SHOVEL STAFF:

PUBLISHER: LINCOLN GEM & MINERAL CLUB, INC.
P.O. Box 5342
Lincoln, Nebraska 68505-0342

EDITOR: SHARON MARBURGER
P.O. Box 64
Hickman, Nebraska 68372
E-mail: lgmc.editor@windstream.net

CIRCULATION: VERA LYMAN
402-464-6089

REPORTERS: All members are encouraged to submit features, articles, poetry, or drawings.

LGMC is a member of:



This Editor is a member of
Special Congress
Representing Involved
Bulletin Editors

