



PICK & SHOVEL

May 2016, Volume 58, Issue 9

Editor: Sharon Marburger

The purpose of this corporation shall be to study, promote an interest in, and disseminate knowledge of lapidary and various Earth Sciences including but not necessarily limited to Geology, Paleontology and Mineralogy. It shall be a particular purpose of the corporation to provide education in these fields to its members and the general public, especially to youth and student groups.

BOARD OF DIRECTORS

President

Ed Dvorak, 402.946.3041
ed20649@windstream.net

1st Vice-President

Jayne Beer, 402.890.3307
JBeer60070@aol.com

2nd Vice-President

Charles Wooldridge, 402.975.0416
charles.wooldridge@nebraska.gov

Treasurer

Vera Lyman, 402.464.6089

Secretary

Jim Marburger, 402.430.6703
jm24122@windstream.net

Board Member

Carolyn Ashmore, 402.325.8878
saturn1_101@hotmail.com

Board Member

Board Member

Andrew Tiedje, 402.219.2323
silverjinnstudios@gmail.com

Board Member

Sharon Marburger, 402.429.3323
lgmc.editor@windstream.net

2016 MEETINGS AND ACTIVITIES

Regular monthly meetings are held at 7:00 p.m. at the Bethany Park Shelter House. Youth activities begin at 6:00 p.m. Board Meetings begin at 6:30 p.m.

Thursday, May 12

General Meeting - 2nd Thursday!!!!

Summer Break from Business, but join us in social activities!

Thursday, Sep. 15

Thursday, Oct. 20

Thursday, Nov. 17 (Annual Business Meeting)

Sunday, Dec. 4 (Christmas Party & Awards)

Board

Wednesday, August 31 (September Meeting):
To be determined

Activities

Roadside Clean-up & Rock Party, May 14
Meet at 1:00 p.m. at Hickman Rest Area
Rock Party to follow at the Marburgers

Booth at Children's Museum, May 15
Contact Jayne Beer/Carolyn Ashmore for more information.

Saturday, May 21
Corey Beer's Graduation Party

Vacation Bible School Presentation at
St. Paul's Lutheran Church of DeWitt, June 7
Contact Jayne Beer/Carolyn Ashmore for more information.

Campout at Big Indian Recreation Area
Weekend of June 25
See article on page 8

MAY BIRTHDAYS

Noah VanButsel

Ellie Lyman

To ensure your birthday is recognized, please send your birth month to Sharon at lgmc.editor@windstream.net

REFRESHMENTS

May 12: Ashmore & Schleiger

PRESIDENT'S MESSAGE

by Ed Dvorak

Does everyone have their MAY BASKETS ready? It was fun in my younger days.

With all the rains we have had, be careful when river walking. All the banks are slippery and the water is high and swift. As always, be sensible when out collecting.



It looks like we have many upcoming club events. Take a few minutes to review the cover of this newsletter, then look inside to see if there is an article with more information.

All we need now is warm weather and soon we will complain it's too hot. But, enjoy life and nature as much as you can, and put troubles and worries on the back burner. Be safe and be happy.

Wow!
It looks like he made it!
Corey is
graduating
high school!

Join the Beer family to celebrate this momentous event!

**PAR-TAAAY on Saturday,
 May 21, time and location to be
 announced later.**

**Come congratulate Corey
 (and Mom & Dad).**

Silversmithing classes

Tuesday Evenings
 7:00 p.m. - 10:00 p.m.

**The Jewelry Connection Ltd.
 Indian Village Shopping Ctr.
 13th & Arapahoe, Lincoln**

Tuition: \$120 plus \$30 supply deposit

Session 3: Apr 26 - Jun 14

Summer Break

Session 4: Aug 9 - Sep 27

Session 5: Oct 4 - Nov 22

Contact:

Jayne Beer 402-890-3307

Judith Bay 402-423-7058

or e-mail

jbeer60070@aol.com

Roadside Clean-up

**May 14
 1:00 p.m.**

Meet at the
 Hickman Rest Area
 Highway 77 & Hickman Rd.
 to receive your road section
 assignment, trash bags, and a
 safety vest

**Rock Party
 to follow
 at the Marburgers**



The Marburgers will provide pork sandwiches and iced tea at the Rock Party. Bring salads, chips, desserts, drinks, or other complementary food delicacies. You may drop off refrigerated items or crock pots that need to be plugged in, by 12:30.

It will be a fun time of food and projects. At least two Genies will be available for use.

GENERAL MEETING MINUTES

General Meeting Minutes for April 21, 2016
Bethany Park Shelter House
Sharon Marburger (in Secretary Jim Marburger's absence)

- ◆ Meeting called to order at 7:07 p.m. by President Ed Dvorak.
- ◆ Attendance: Junior members - 1
Adult Members - 22
Junior Guests - 1
- ◆ New members Jodi Sommers and Magdelyn Sorenson were present.
- ◆ Minutes of the March meeting were published in the Pick & Shovel. Motion by Bob Gruit to accept the minutes; second by Susy McMahan. Passed.
- ◆ Treasurer's Report was given by Vera Lyman. Motion to accept by Gene Mulinex; second by Jim Atkins. Passed.

OLD BUSINESS:

- ◆ Wild Adventure Day at Pioneers Park on April 30 from 10:00 - 2:00. Jayne and Carolyn plan to have a booth.
- ◆ Field Trip: Bartel Museum at Concordia University. Sunday, May 1, 1:00 - 4:00. Museum will be open just for us.
- ◆ Roadside Clean-up: Saturday, May 14. Meet at the Hickman Rest Area at 1:00 p.m. for instruction, safety vests, and assignments. Rock Party will follow at the Marburgers in Hickman.

NEW BUSINESS:

- ◆ A request came through on the web page for a loan of geodes for a Sunday School class. The contact information was given out for individuals to contact the teacher.
- ◆ A request came though on the web page for our participation at the STEAM Program at the Children's Museum in Lincoln. Jayne and Carolyn will contact the Museum and request May 15.
- ◆ A request came though on the web page requesting presenters for Vacation Bible School at St. Paul's Lutheran Church of DeWitt during the second week of June. Jayne and Carolyn offered to check into it.
- ◆ Reminder that the May meeting will be held on

the second Thursday of May (May 12), due to the Bethany Park Shelter House not being available to us on the third Thursday.

SHOW REPORT:

- ◆ Treasurer Vera Lyman gave a preliminary report that it appears we made a profit at the Show this year.
- ◆ Thanks to everyone who helped with setup, worked during the Show, and helped with teardown. We need to enlist the help of younger members for teardown; we don't need people in their 80s to be doing all the heavy lifting.
- ◆ Sharon requested that pictures taken during the event be sent to her for inclusion in the Pick & Shovel and the All American Yearbook.
- ◆ The meeting adjourned to program and snacks at 7:23 p.m. on a motion by Susy McMahan, second by Carolyn Ashmore. Carried.

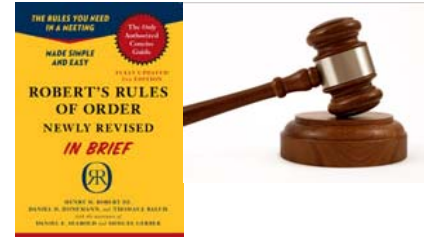
The program was a video provided by Ed Dvorak on Ancient America's "Gila Cliff Dwellings - a National Monument." The video described where and how the Mogollon people lived in New Mexico, northwest of Deming and Silver City in the Mogollon Mountains.



Photos found at
<https://www.nps.gov/gicl/learn/photosmultimedia/photogallery.htm>

BOARD MEETING MINUTES

Lincoln Gem and Mineral Club, Inc.
 April 6, 2016 Board of Directors Meeting
 Meeting held at the Lyman Residence



- ◆ Called to order by President Ed Dvorak at 6:25 p.m.

Ed Dvorak	present
Charles Wooldridge	present
James Marburger	present
Vera Lyman	present
Carolyn Ashmore	present
Sharon Marburger	present
Fred McVay	present
Andrew Tiedje	absent

Two guests: Ed Ridge & Pat Dvorak

- ◆ Minutes of last meeting were handed out. Motion to accept the minutes, with corrections for Tiedje and McVay name spelling, by Charles, second by Carolyn. Passed: 8 yes, 0 no, 1 absent.
- ◆ Treasurer's Report was given out. Motion to accept the report by Carolyn, second by Charles. Passed: 8 yes, 0 no, 1 absent.

OLD BUSINESS:

- ◆ Report on the NAES meeting held at the Lincoln Gem and Mineral Gem Show on April 3, 2016. A new board of directors has been selected: Charles Wooldridge as President, Kevin Stuka as Vice President, Erma Pharaoh as Secretary/Treasurer, and Bruce Berrigan, Carolyn Ashmore, and Ward __ as Board Members.
 - ◇ At the meeting, it was decided that with the new board in place for 2016 and a promise by all in attendance to work on re-establishing the organization to a working entity, Lincoln would stay in and pay its dues at the time of the meeting. (This was done in opposition to the February Board decision to not pay its

dues for 2016, but to not announce non-membership until after the NAES meeting being held at the 2016 Lincoln Show.)

- ◇ Motion by Charles that as a board decision, we accept the membership in NAES for 2016 as already paid at the show, and to rejoin NAES for one year, subject to review at the end of 2016 as to whether NAES is a viable and useful organization to us. Second by Carolyn. Roll call vote called for: Fred McVay – NO; Carolyn Ashmore – Yes; Sharon Marburger – NO; Charles Woodridge – Yes; Jim Marburger – NO; Vera Lyman – Yes; Jayne Beer – YES. Passed: 4 yes, 3 no, 1 absent.
- ◇ Motion by Jim that the payment made to NAES, as done contrary to the Board recommendation in February, stand as paid at the show for 2016 membership. Second by Jayne. Passed: 8 yes, 0 no, 1 absent.

NEW BUSINESS:

- ◆ Fred moved to fill out an application for a gift card of \$250 from Thrivent Insurance for nonprofit organizations to promote the organization. Second by Charles, suggesting the funds go toward educational supplies. Passed: 8 yes, 0 no, 1 absent.
- ◆ New membership applications from the show were presented. Charles moved to accept the 7 new members once they pay the dues. Second by Carolyn. Passed: 8 yes, 0 no, 1 absent.
- ◆ Motion by Jayne to adjourn at 8:10 p.m., second by Fred. Passed: 8 yes, 0 no, 1 absent.

Meeting Adjourned.

Remember!
The General Meeting is the 2nd
Thursday this month -
May 12

2016 SHOW (58TH ANNUAL)



Nebraska Gem Dig, Front Gate, Club Booth,
 Faceted Smoky Quartz Wooly found in SE
 Nebraska, assorted display cases.



2016 SHOW (58TH ANNUAL) - CONTINUED



New Look for the Youth Booth



Guess how many bubblegum agates are in the jar



ALAA NEWS

Excerpted by Tom Noe
(From the Jan.-Mar., 2016, ALAA Newsletter)

IT DEPENDS ON YOUR INTERPRETATION OF THE LAW . . .

Reported by Shirley Leeson

At the January meeting of ALAA in Quartzsite, Mike Hunerlach, U.S. Forest Service Head Geologist (recently retired) spoke on “Rockhounding on Public Lands Managed by the Forest Service” and also gave insight into the laws, rules and regulations that affect collecting rocks, minerals and invertebrate fossils. Mike did a great job of telling us about the Mining Law of 1872 and how it is interpreted today by those in the Forest Service—which isn’t necessarily the way the law is written. His strong suggestion was to get a copy of the Code of Regulations, Title 36, Parks, Forests and Public Property. He said he would help us locate those sections that are pertinent to rockhounds.

This is important because the newly hired rangers from the universities are leaning toward protecting plants, animals, trees, grasses and other nonhuman entities rather than managing our public lands for multiple uses by human beings, as the law provides. Frequently Mike found, in coming in to clean up a misunderstanding between ordinary humans and the Forest Service personnel, the rangers really weren’t using the letter of the law, but their own interpretation of the law. In addition to Title 36, there is also Title 43, Public Lands, Interior Department. You can obtain your own personal copy from the U.S. Printing Office or from Amazon. Or, you may also go to ALAA’s site, www.amlands.org. On the home page, scroll down to the article about the January meeting and

click on either of these titles and download any part of either Title 36 or Title 43. (Beware: if you want a hard copy of Title 43, get the second book, from page 1000 on. I bought the first one and all the information I needed was in the second book.)

Mike has offered his help in learning more about the Code of Regulations and how to use it to our advantage—and this is a huge help.

—ALAA is the lobbying arm of the American Federation, working on behalf of rockhounds to keep public lands open and accessible to all, including the elderly and handicapped.



LGMC is a
proud member
of ALAA

J J & L Rocks & Minerals

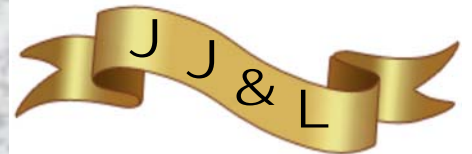
**P.O. Box 68
Hickman, NE 68372**

Lee Harrison
Eric Harrison
402.792.2337

**330 Locust
Hickman, NE 68372**

James Marburger
Sharon Marburger
402.792.2348

jimandjohn@jjlrocksandminerals.com
www.jjlrocksandminerals.com
jjlrocksmin - Ebay Username



Proudly serving
the hobby for
40 years

BIG INDIAN CAMPING TRIP

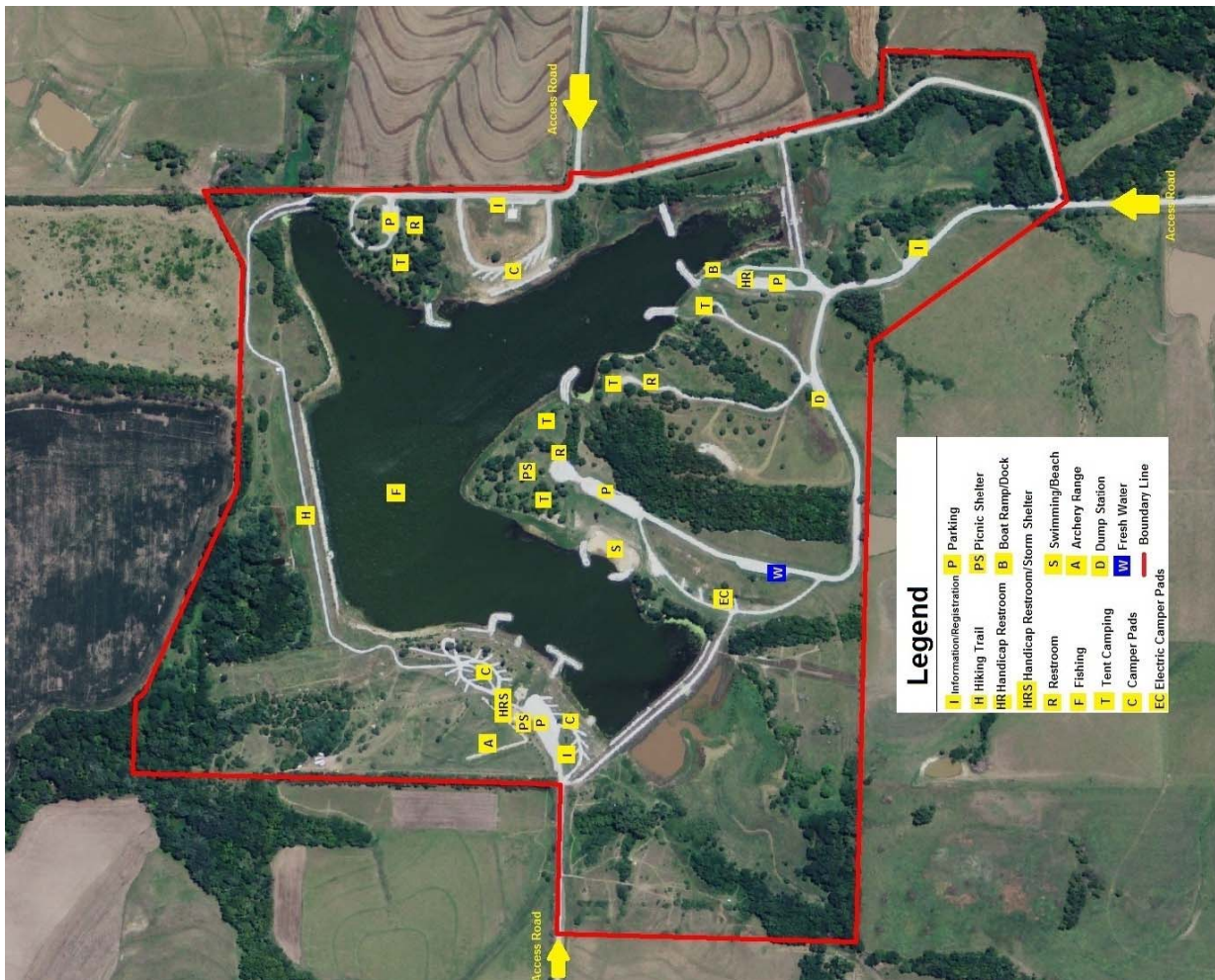
The weekend of June 25 will find us at the Big Indian Recreation Area, sponsored by the Lower Big Blue Natural Resources District (“LBBNRD”). Big Indian is located 6 miles east of Odell, Nebraska, off Highway 8. Because Big Indian falls under the purview of LBBNRD, a state park permit is not required.

Rules and regulations for the area are:

- ◆ No open fires except in places provided
- ◆ All pet must be on a leash
- ◆ Hunting and the discharge of firearms is prohibited except from October 1 through April 1 and only in designated areas
- ◆ Vehicles are confined only to roadways and parking areas
- ◆ Swimming allowed in designated areas only
- ◆ 15 M.P.H. speed limit
- ◆ Camping registration required at entry
- ◆ Remove all trash or place in an appropriate trash receptacle or dumpster if provided - No Fish
- ◆ Quiet hours are from 10 p.m. to 6 a.m.

Camping regulations are:

- ◆ All campers must register (this include motorhomes, travel trailers, fifth wheels, and tents)
- ◆ Fee is \$10/day (electrical) or \$5/day (non-electrical)
- ◆ A late fee of \$100 will be charged if camper is not registered within 30 minutes of arrival
- ◆ Campsite permit expires at 5:00 p.m. Campsite must be vacated by 5:00 p.m. unless you re-register
- ◆ Camping is first come, first served.
- ◆ Tent camping sites are not marked
- ◆ Camping is not allowed under picnic shelters
- ◆ Camping is limited to 14 days per 30 day period
- ◆ Only one camper allowed per electrical campsite
- ◆ Detach and place receipt on post or windshield where visible
- ◆ Insert fee inside provided envelope, and deposit in registration drop box
- ◆ Checks can be made to LBBNRD



You are not limited to camping on the weekend. Some members plan to begin their stay during the week prior to the weekend. A couple of field trip are being planned for the 25th and 26th. Additionally, in the evenings we will gather for the telling of tall tales and rockhound fellowship.

Save the date and expect to have a good time!

2017 SHOW

by Sharon Marburger

Following the May Board meeting, a group of members participated in an impromptu meeting regarding the 2017 Show. The meeting came about because I asked 2017 Show Chairman, Jayne Beer, if she had spoken to anyone yet about being on her Show Committee. My intent was to update the Show Committee list in the Pick & Shovel.

Those present participated in a lively discussion about planning the 2017 Show. A partial list of committee chairmen is listed on page 11 of this newsletter. If you are interested in chairing a subcommittee, please contact Jayne. If you are interested in being on a subcommittee, contact Jayne or the person listed as the chairman. Specific chairs needed are Floor Chairman and Special Features Chairman. This is your chance to take the reins and help lead our Club to a successful Show.

A successful show happens when a team of persons work together for the greater good. Each person has ideas of what can be done to accomplish that success. If you are a newer member, this would be a wonderful opportunity for you to learn how a show comes together and to offer fresh ideas. Long-time members will gladly assist you and offer advice and years of experience.

The theme of the 2017 Show is "Nebraska Rocks!" The focus will be on rocks, minerals, and fossils collected in Nebraska. This will be the perfect opportunity for each and every person in LGMC to participate by having a display case at the Show. Who in the Club has not picked up a rock in Nebraska? We all have 11 months to collect in Nebraska and put together a display. Are you up for the challenge? Let's do ourselves proud by having the best show possible in 2017!

Now, do you know anyone who has a special display of Nebraska material? We would like to have one, two, or three Special Features to focus on in advertising. Bring your ideas and suggestions to the May 12 meeting. We have the ability to start NOW with our planning.

LET'S DO THIS, PEOPLE!!!!!!

NEBRASKA ROCKS!

MINERAL MONKEYS

by Carolyn Ashmore

Hello Again Juniors.

The May meeting is the last one before the 3 months off for summer break and field trip season. I hope you all get a chance to do a little rockhounding this summer, and bring your finds to our next scheduled meeting (September 15th.)



All of you who got your junior/senior written project finished, please bring it to this meeting. We will present them at the meeting, then give them to Sharon for publishing in the Pick & Shovel.

For those of you who have not yet gotten a chance to complete your junior/senior written project, never fear! You have until the October meeting to complete it and get it handed in.

The club has lots of activities planned for the upcoming weeks: roadside clean-up; rock parties; Grinding Party at the Pioneers Park Nature Center, followed by the picnic in the park; and a camping field trip the weekend of June 25. Wooly will lead us on a field trip from the campground that weekend, and it would be awesome to have you all there rockhounding together. It sounds like a fun start to the summer!

Corey graduates high school this month... WAY TO GO COREY !!!!!!! Corey graduated from an LGMC junior member to an adult member two years ago when he turned 16. We are all very proud of him. If you get a chance, tell him CONGRATS at this next meeting.

On a personal note I want to take this opportunity to thank all of you, both junior and senior members, for your continued support to make our Future Rockhounds of America Program a success. Without everyone's participation and volunteer time, and sharing knowledge of the hobby, we would not have a successful program. Thank you all!!

Remember!
The General Meeting is the 2nd
Thursday this month -
May 12

WILD ADVENTURE DAY

by Jayne Beer

On April 30 from 10 until 1, Pioneers Park held Wild Adventure Day, a free family event at the Nature Center, sponsored by The Friends of the Pioneers Park Nature Center and the Nebraska Wildlife Federation. There were activities for all ages including special presentations, booths, crafts, and games.

Linda Guenter, Carolyn Ashmore, Brian and Corey Beer, and I set up a table with the Gem Dig. It was a good day for us with lots of kids; they were overflowing into the hall and occupying about every open surface they could find. Several parents enjoyed doing the gem dig, also. It was fun to watch how some of the kids picked out a couple rocks and left, while others had incredible patience, picking out every tiny piece of polished rock they could find.

Other activities at the event included the animal encounter room sponsored by the Lower Platte South Natural Resources District and new additions to the Edna Shield's Natural Play Area for Children. There was a live raptor presentation and the dedication of the newly remodeled play area. At the play area, kids can play and learn in nature. They can dig in the sand and soil, crawl through hollow logs and tunnels or help build a fort in a safe and manageable space. The kids were also able to check out a fossil dig site and a soil tunnel.

Some of the other presenters were the Nebraska Wildlife Federation, Lincoln Children's Zoo, University of Nebraska State Museum, University of Nebraska Microbiology and Entomology departments, UNL Wildlife Club and NU School of Natural Resources, Homestead National Monument, the Nebraska Walleye Association, Lincoln Watershed Management, and the Lincoln Electric System.



The parents appeared more excited than the kid!



2016 MWF CONVENTION

Michiana Gem & Mineral Society's Annual Jewelry, Gem & Mineral Show and Sale

53rd Annual Show and the 76th Midwest Federation of
Mineralogical & Geological Societies Convention

August 19, 20, & 21, 2016
Friday Noon to 7 pm * Saturday 10 to 6 pm * Sunday 10 to 5 pm
Show Theme: "Midwest Minerals"



St Joseph County 4-H Fairgrounds
Esther Singer Building
5117 South Ironwood Road
(Ironwood and Jackson Road)
South Bend, Indiana 46614

Admission:
Adults: \$3.00
Kids 6-12: \$1.00
Under 6: FREE
Parking: FREE

Two Host Hotels!

Super 8 (Wyndham Hotel)
4124 Ameritech Dr.
South Bend, IN
1-574-243-0200
\$48 - \$90 plus tax - depending on room type
Located off U.S. 20 Bypass & I-80/I-90 Toll
Road exit 72.
Free continental breakfast, wifi, indoor pool,
guest laundry, & elevator.

Candlewood Suites (IHG--Holiday Inn)
3916 Lincoln Way West
South Bend, IN
1-574-968-1072
\$110 plus tax
Located east of U.S. 20 Bypass near South
Bend Airport.
Free laundry, wifi, fitness center & 24 hr.
convenience store.

STANDING COMMITTEES

Audit	Ed Dvorak, Jayne Beer James Marburger
Christmas Party	Edward Ridge
Education / Librarian	Charles Wooldridge
Facebook	Andrew Tiedje
Field Trips	James Marburger
Geology Day Coordinator	Charles Wooldridge
Grinding Party Coordinator	Charles Wooldridge
Historian	Sharon Marburger
Legislative Liaison	Susy McMahan
Membership Record	Edward Ridge
MWF Liaison	Vera Lyman
Programs	Susy McMahan
Property	James Marburger
Recognition / Awards	Richard Peterson Charles Wooldridge, James Marburger
Refreshments / Door Prizes	Vera Lyman
Roadside Clean-up	James Marburger
Scholarship	Vera Lyman
Show—2017	Jayne Beer
Swap—2017	Jayne Beer
Website	Jim & Sharon Marburger
Youth Activities	Carolyn Ashmore Susy McMahan

LONG RANGE PLANNING & BY-LAWS COMMITTEE

Jim Marburger, Chairman

1 year:	Edward Ridge Robert Cropp
2 years:	Charles Wooldridge Sharon Marburger
3 years:	Vera Lyman Ed Dvorak

NOMINATING COMMITTEE

Jim Marburger, Chairman

1 year:	Vera Lyman Edward Ridge
2 years:	Robert Gritmit Sharon Marburger
3 years:	Jim Atkins Andrew Tiedje

ADVERTISING, SUBSCRIPTION, AND MEMBERSHIP INFORMATION

Advertising by rock / hobby business or interest is permitted with the approval of the Board of Directors. Contact the Editor with your proposed ad. The rate is set at \$20.00 per full page; \$10.00 per 1/2 page; \$5.00 per 1/4 page (minimum) per issue, paid in advance to the Club treasurer. Ads will be placed throughout the newsletter as space permits.

Subscription to the Pick & Shovel is \$15.00 per year for mailed copy.

Membership dues for the Lincoln Gem & Mineral Club are as follows:

- Adults (age 16 and over) - \$15 per year or \$25 per couple (within the same household)
- Juniors - \$2 per year (with a responsible adult)

All new memberships must be accompanied by a written application. Prospective members must gain Board approval and attend one regular meeting before being approved for membership.

2017 SHOW COMMITTEE

Chairman:	Jayne Beer
Dealers:	Vera Lyman
Demonstrators:	Vera Lyman
Displays:	Jayne Beer, Ed Ridge
Event Center Liaison	Vera Lyman
Finance & Ticket Sales:	Jim Atkins, Vera Lyman
Floor Chairman:	
Forms	Sharon Marburger
LGMC Club Booth:	Andrew Tiedje
Nebraska Gem Dig:	Charles Wooldridge
Plants:	Ed Ridge
Printed Program:	Sharon Marburger
Publicity & Promotion:	Jim Marburger
Ribbons & Recognitions:	Sharon Marburger
Security:	Vera Lyman
Show Flyer	Jayne Beer, Sharon Marburger
Silent Auction:	Sharon Marburger
Special Features:	
Web Master:	Jim & Sharon Marburger
Youth Activities:	Carolyn Ashmore

Mail Exchange Newsletters to:

Lincoln Gem & Mineral Club, Inc.
P.O. Box 5342
Lincoln, NE 68505-0342

Or e-mail newsletters to:
lgmc.editor@windstream.net



A color version of the Pick & Shovel is available at:
<http://www.lincolngemmineralclub.org/index.php/newsletters/current>

PICK & SHOVEL

The *Pick & Shovel* is the official publication of the Lincoln Gem & Mineral Club, Inc., Lincoln, Nebraska. Articles and items appearing within may be reproduced in other club bulletins, provided proper credit is given to the *Pick & Shovel* and the author.

YOUR PICK & SHOVEL STAFF:

PUBLISHER: LINCOLN GEM & MINERAL CLUB, INC.
P.O. Box 5342
Lincoln, Nebraska 68505-0342

EDITOR: SHARON MARBURGER
P.O. Box 64
Hickman, Nebraska 68372
E-mail: lgmc.editor@windstream.net

CIRCULATION: VERA LYMAN
402-464-6089

REPORTERS: All members are encouraged to submit features, articles, poetry, or drawings.

LGMC is a member of:



This Editor is a member of
Special Congress
Representing Involved
Bulletin Editors

