



Lincoln Gem & Mineral Club, Inc.

# PICK & SHOVEL

July 2015, Volume 57, Issue 11

Editor: Sharon Marburger

The purpose of this corporation shall be to study, promote an interest in, and disseminate knowledge of lapidary and various Earth Sciences including but not necessarily limited to Geology, Paleontology and Mineralogy. It shall be a particular purpose of the corporation to provide education in these fields to its members and the general public, especially to youth and student groups.

## 2015 Meetings and Activities

### Board

Wed., Sep 2 (Lyman Residence)

Wed., Sep 30 (Oct) (TBD)

Wed., Nov 4 (TBD)

Wed., Dec 2 (Gere)

### General

Summer Break from Business

Thurs., Sep. 17

Thurs., Oct 15  
(Halloween Party)

Thurs., Nov 19

Dec 6 General Meeting,  
Christmas Party, Awards  
Ceremony

### Activities

Grinding Party - Jul 12  
(Pioneers Park Nature Center,  
Prairie Building)

~~~~~  
Regular monthly meetings are held at 7:00 p.m. at the Bethany Park Shelter House. Youth activities begin at 6:00 p.m.

## GENERAL MEETING

Summer Break!

## MINERAL MONKEYS

Summer Break!



## JULY BIRTHDAYS:

Sharon Marburger

Susy McMahan

Charles Messenger

**Grinding Party at the  
Pioneers Park Nature Center  
Prairie Building  
July 12, 1-4 p.m.  
Setup at noon  
Picnic in the park to follow.**

## BOARD OF DIRECTORS

### President

Ed Dvorak, 402.946.3041  
ed20649@windstream.net

### Treasurer

Vera Lyman, 402.464.6089

### Board Member

Richard Peterson, 402.489.2996  
pdr20@yahoo.com

### 1<sup>st</sup> Vice-President

Jayne Beer, 402.890.3307  
JBeer60070@aol.com

### Secretary

Pat Dvorak, 402.946.3041  
ed20649@windstream.net

### Board Member

Susy McMahan, 402.464.0065  
blueriverjewelry@neb.rr.com

### 2<sup>nd</sup> Vice-President

Charles Wooldridge, 402.416.3233  
charles.wooldridge@nebraska.gov

### Board Member

Carolyn Ashmore, 402.325.8878  
saturn1\_101@hotmail.com

### Board Member

Sharon Marburger, 402.792.2348  
lgmc.editor@windstream.net

## PRESIDENT'S MESSAGE

by Ed Dvorak

I hope everyone had a safe Fourth of July. Plenty of food, drink, and bugs! The bugs also need someone to eat. HA!

The sale in Red Oak, Iowa was very nice. Club members and fellow rockhounds had a nice time talking to one another. I believe the best buys were non-rock related items. Red Oak was called Red Oak Junction at one time because of the train station. They were having their "Junction Days" celebration. If you did not want to be at the sale, there was plenty of other things to see and do.

Remember to attend the July Grinding Party at the Pioneers Park Nature Center. This year we will be in the Prairie Building instead of the Chet Ager Building. Bring your smaller displays, projects to work on, and whatever else you may have to help promote the hobby. This is a great opportunity to share our love of the hobby with the public.

Be safe, be happy.



## WHAT IS UNDER THAT ROCK?

by Charles "Wooly" Wooldridge

A couple of years ago, the Lincoln Gem and Mineral Club had a field trip to the area north and west of Fairbury to look for fossils. For those of you who were on the trip, you may remember the T intersection of gravel roads where we found ammonite in limestone.

On June 27th, Donovan Harris from the North Central Kansas Rock Club and I stopped by there to check out the fossils. Turning over a piece of limestone, I was met with quite the surprise. A scorpion was escaping the intense summer sun. I quickly grabbed an empty water bottle and captured him.

They are now common in Thayer County and may be spreading due to climate change.

This is, once again, a reminder to rockhounds to always check WHAT'S UNDER THAT ROCK?!!!



He was a Striped Bark Scorpion, the most common scorpion in the south central U.S. Their sting is rarely fatal unless you are allergic to bee stings. The neurotoxin can be quite painful, however, if stung.

**Please remember to send  
articles, features, poetry,  
reports, and photos of events  
to the editor!  
The Pick & Shovel  
needs YOU!**

# JUNE ROCK PARTY

by Sharon Marburger, Editor

Ed and Pat Dvorak hosted the Rock Party on Friday, June 19, which turned out to be a lovely evening weather-wise. The group of members making their way to Dorchester included Jim & Sharon Marburger, Ed Ridge, Bruce Sturges, Judy Anson, Jayne Beer, and Corey Beer.

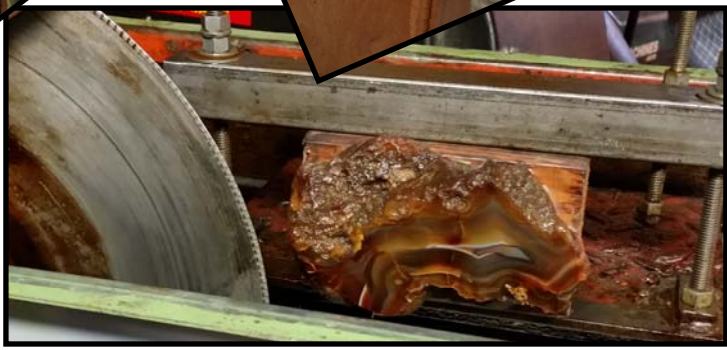
Pat prepared Sloppy Joe's for the main course and also provided pie. Others brought chips, baked beans, muffins, fruit, and lots of dessert!

We were all amused by Ed's sign advertising "Ed's Used Rocks." We had a good time checking out all the goodies in his yard landscaping.

After eating, we took up residence in Ed's shop. Judy brought a bunch of specimens to identify, Ed Ridge, Jayne and Corey did some lapidary, and the rest of us visited, identified specimens, and ooh'd and aaah'd over the lapidary projects. As always, Corey brought a bunch of specimens to share, and we drooled over his finds.

It was a pleasant evening of camaraderie and shared interests.

You can host a Rock Party, too! We are looking for a host for August. Let me, President Ed Dvorak, or any Board member know. All you need is a date, time, and location.



## AWARDS SEASON IS COMING SOON!

by Richard Peterson

The Awards Committee wants to remind everyone that our LGMC awards presentation program is in December as part of our Christmas potluck. Now is the time to consider nominating persons who have contributed to the club.

There are two primary award categories: Rockhound of the Year and the Service Award given for 10, 20, 30, 40 or more years of contributions to the club. The nomination process is open to every member. We have a number of worthy candidates who should be considered. The deadline for submission of nominees is September 30, which is the date of our October Board meeting.

The forms can be found on pages 9 and 10 of this newsletter. They may be submitted at any time, up to and including September 30, to me, Wooly, or Jim Marburger. The forms are also available on the website.

## NOMINATING COMMITTEE

by Jim Marburger, Chairman

The first round of nominations will take place at the September General meeting.

Put on your thinking caps and send your nominations to me, or any member of the Nominating Committee, prior to the meeting. Members of the committee can be found on page 11 of any newsletter.

Nominations will be accepted from the floor at the September meeting, and again at the November meeting, immediately prior to the election.

In addition to the officer chairs, positions requiring nominations are the four Board chairs and two 3-year nominating committee positions. I will also be looking for two persons to take on 3-year positions on the Long Range Planning and By-laws committee.

If you have an interest in being nominated to the Board of Directors or filling a committee position, please let me know. According to the by-laws, you must be a member in good standing for a minimum of 12 months to be on the Board. You must have served on the Board for 12 months to be President.

## SPECIMEN SWAPPING

by Sharon Marburger, Editor

I received the following communication via e-mail:

I am a member of the Spring River Gem & Mineral Club in Cherokee Village, Arkansas. We are, so far, the largest contingent of rockers in the State. We are hoping that someone from your club is interested in rock swapping and will do so with us. We swap varying sizes of mineral/fossil specimens (no rocks, no leaverites, collected on club field trips and/or individual member field trips). Each specimen is individually wrapped and identified. Each box should be a minimum of 10 pounds. You can ship 10 pounds in a medium size, flat rate, USPS box for approximately \$12.00. We try to have the rocks shipped on the same day so we received them accordingly.

We have been doing this for some time and have received unbelievable amounts and kinds of rocks from all over the country. Gemmers have commended us on our selections. I am sure you will like these "gems".

Should you decided to exchange rocks with us, it will be like Christmas all over and it would be the only time the rocks come to us instead of us going to the rocks.

Please note they want only minerals or fossils.

Should you decide to participate in this specimen exchange, you may e-mail Patricia A. Kimball at [kimballp.lpga@gmail.com](mailto:kimballp.lpga@gmail.com) or telephone 870.847.3771 to obtain a mailing address.

Please notify me if you plan to exchange, and let me know what specimens are sent to Arkansas. Once you receive specimens in return, I can publish a list of what was exchanged and, if you provide pictures, they will be included in the article.

This is a great opportunity to increase and broaden your collection, especially if you are unable to travel to collect in person.

## RIVER HUNTING IN NEBRASKA

by Charles "Wooly" Wooldridge

I have been fortunate to spend the last 30 years rockhounding rivers in Nebraska, particularly the Nemaha and Blue Rivers. The rivers are located in the southeast and south central areas of the state and require an hour to an hour-and-a-half to get to from where I live in Lincoln. Because of the distance, I only get to go a half dozen or so times per year. For this reason, I usually plan to make a whole day of it, starting out early morning and dragging myself home after dinner.

I have an over-the-shoulder bag with plenty of room for all the agates, petrified wood, fossils, artifacts, and curiosities I find. It has a separate section where I stow a first aid kit, water, sunscreen, insect repellent, snacks, and, of course, toilet paper. My Estwing gem scoop is essential. It serves as a walking stick and provides the capability to pick up rocks to inspect without bending down, saving wear and tear on my back which, at my age, is very much appreciated. It is important to have a walking stick down on the river because of possible quicksand, or quick gravel. A walking stick can be laid down horizontally to give you the added ability to get out. This is also one of many reasons to have a friend along! I wear old shoes that drain water well. Waterproof shoes are ineffective because they hold the water in and do not dry out nearly as fast. A long sleeve shirt, long pants, and a hat complete my attire. My friend, Roger, told me that light blue is the best color to wear because it attracts fewer insects. He should have known; he was a well-known paleontologist and agate researcher who spent many years in the field.

Rockhounding is an activity similar to fishing or gambling where there is an inherent risk of addiction. Scientists who research addiction would describe the reward of finding a "choice find" as a variable intermittent reinforcement schedule. That means once in a while - not every time and not everywhere you look - you find something exciting, giving you that OMG!!! Experience. Much like fishing or playing the "one armed bandit," you keep coming back even though you may get "skunked" sometimes. Intermittent reinforcement schedules create the hardest habits to extinguish, and folks will keep driving long distances, sweating, and wearing themselves out many times before they quit looking, usually making that one find to fuel their rock habit

even more. As an aside, I believe looking at the gravel in front of the dentist office or the fast food parking lot is a gateway behavior.

I tend to look on the USGS website water flow charts to determine the best times to visit the river. You can clearly see when an area has had enough rise in water level to turn over the gravel and create new material on the gravel bars to search through. I have learned to pay attention, also, to how the water level drops. If the graph shows a rapid drop, the gravel is more likely to be clean and covered with less silt and mud. A slower decline tends to allow sediment to be deposited on top of the heavier stone material. You can access this information by Googling USGS current water data for (specific river or stream) and then location (i.e., closest town). Sometimes you have to use a tributary if there is not a location nearby the river or stream you are looking for. For example: I like to hunt the South Fork of the Big Nemaha River in southeast Nebraska but there is not a data site there. I know Turkey Creek near Seneca, Kansas is the major tributary, so I search that site to get an idea of what the conditions are on the river.

Recently, I have been refocusing my searches to find artifacts left behind by the ancient peoples of Nebraska. I have learned to look for certain areas that tend to be more productive. I look for gravel bars that have large "dirt balls" distributed across them. These balls of soil usually are about the size a softball up to the size of a basketball and will generally be scattered in striations across the gravel or sand bars. These tell me two things: the material has come from the fields or hillsides around the stream, thus increasing the likelihood of possessing artifacts and will give me an idea of where to look on the bar. Just like looking for gold, heavier items will separate out from lighter items based on the water current. These big clods create a barrier that slows the water and allow heavier items to drop out. I first look immediately upstream from these and other natural barriers where there is an increased likelihood of finding "treasure." A note of caution: This is nowhere near evidence-based practice ... it just gives me a strategy to direct my search. I end up searching everywhere!!!

I hope these tips encourage you to get out and have some fun, take a buddy or two, and take some kids. I think the best way to build our hobby's future is field trips, field trips, and more field trips. See you out there!

## ALAA EXCERPT BY TOM NOE

### Let ALAA Know If You Encounter Access Problems

By Shirley Leeson, ALAA President

American Lands Access Association (“ALAA”) has been blessed with members and FRIENDS who have rallied to our side . . . it doesn’t get any better than that.

There are still numerous problems involving rockhound access cropping up all over the country and we need your help to identify them, so please notify ALAA and get involved. Together we can try to do something to preserve our access to rockhound hunting sites. Nothing is better than having people in the local area take the lead on publicizing road closures, sites closures, etc. These are the people close to the problems, and sometimes that person is YOU.

YOU ARE NOT ALONE, so let ALAA know how we can help and support you. We are all volunteers, some with lots of time to work to solve problems and others with limited time, but you all are a part of this vast puzzle and we need you.

—Excerpted from *ALAA Newsletter* (Jan.-Mar., 2015). ALAA is the lobbying arm of the American Federation, working on behalf of rockhounds to keep public lands open and accessible to all, including the elderly and handicapped.



LGMC is a proud member  
of ALAA

## A QUICK LOOK AT VANADINITE

by Aaron Hendricks (10), Colorado Mineralogical Society

From: *Pick & Pack*, 9/09

(2010 2<sup>nd</sup> Place – AFMS Junior Articles, under 12)

Vanadinite is one of my favorite minerals. I chose to write about it because it is so cool looking. When I decided to become a geologist, my mom helped me join a rockhound group on Yahoo. That’s when a gentleman from Alabama said he would send me some samples. On July 7, 2009 we got a box. I was so excited to open it up; and there it was, a piece of vanadinite!

My mom and I cataloged it into my collection. Then I looked at it with my loupe lens. I like how it looks – as if there are a thousand giant crystals on it. I also love the reddish color. After observing the specimen, we put it in a display, and I set out to learn more about the mineral.

Most of my information came from a book called *Simon & Schuster’s Guide to Rocks and Minerals* and online sources. The specimen was labeled with a tag stating it was from Mibladen, Morocco. Morocco is well-known for its fossils and minerals. Mibladen is one of the world’s top producers of vanadinite. I’m so grateful to own a piece for myself.

Vanadinite is a lead mineral colored by vanadium and is generally red, brown, or yellowish in color. It is part of a series with two other minerals; they are pyromorphite ( $Pb_5(VO_4)_3Cl$ ) and mimetite ( $Pb_5(AsO_4)_3Cl$ ). Vanadinite is translucent, so you can see light through it but not objects. The Mohs hardness for vanadinite is 2.75-3.00 (harder than gypsum and softer than fluorite), and its luster is adamantine (brilliant like diamond). The crystals are usually hexagonal

(Continued on page 7)

## J J & L Rocks & Minerals

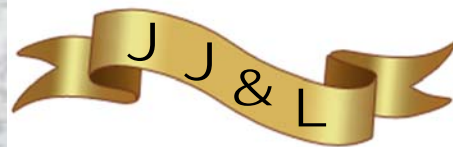
P.O. Box 68  
Hickman, NE 68372

Lee Harrison  
Eric Harrison  
402.792.2337

330 Locust  
Hickman, NE 68372

James Marburger  
Sharon Marburger  
402.792.2348

jimandjohn@jjlrocksandminerals.com  
www.jjlrocksandminerals.com  
jjlrocksmin - Ebay Username



Proudly serving  
the hobby for  
37 years

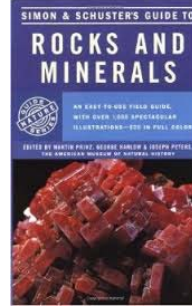
## A QUICK LOOK AT VANADINITE

(Continued from page 6)

prisms but often can be skeletal or cavernous. Its streak color is yellowish and has a brittle, uneven fracture.

My favorite thing about this mineral is the fact that it is fusible. That means it can be fused or melted to another material through heat or pressure. Someday I'd like to melt some of the crystals and make a piece of jewelry, even though it's mainly used in industrial building and chemicals.

If you are reading this and have never held or viewed a real live sample of this mineral, you need to. I believe it is such an interesting thing to look at and observe. This is one of the minerals that sparked my interests and made me want to discover more about minerals.



### Silversmithing classes

Tuesday Evenings

7:00 p.m. - 10:00 p.m.

**The Jewelry Connection Ltd.**  
**Indian Village Shopping Ctr.**  
**13th & Arapahoe, Lincoln**

Tuition: \$120 plus \$30 supply deposit

**\*\* Summer Break \*\***

**Session 4: Aug 11 - Sep 29**

**Session 5: Oct 6 - Nov 24**

**Contact:**

**Jayne Beer 402-890-3307**

**Judith Bay 402-423-7058**

**or e-mail**

**[jbeer60070@aol.com](mailto:jbeer60070@aol.com)**

## LINCOLN CURIOS ROCK SHOP

6625 Burlington - Lincoln, NE 68507 [Park in alley]

(402) 310-3307

### ► SPECIALIZING IN ARIZONA PETRIFIED WOOD ◀

- ◆ Rough stones and fossils for the hobbyist
- ◆ Polished stone items for interior décor
- ◆ Great selection of tumble-polished stones

Open Tuesday thru Saturday  
 10 a.m. - 6 p.m.

# BROCK AUCTION CO., INC.

## Huge Rare Rock Collection & Equipment

### PUBLIC AUCTION

SATURDAY, AUGUST 8th, 2015 @ 11:00 AM

1505 15th Street - Onawa, Iowa



**Fossils:** Mammoth, Coral (Tampa Bay etal) , Algae, Ammonites, Trilobites, Recent, Coral & Shells Stromatolites - Wyoming & Minnesota, Bison, Fish

**Petrified Wood:** Hundreds of 50-100# Large Landscaping Pieces, 5 Gal. Pails Full

**Landscaping:** Quartz, Quartzite, Geodes

**Jasper/Agates:** Polished Pieces, Rough, Slabs & Sphere Leftovers, Montana Moss (150 - 200# Agates), Mexican, S.E. US, Oregon, Etc. Prairie Agates, Polished Slabs

**Concretions-Septarians:** Obsidian & Other Volcanic Rocks, Apache Tears, Rainbow, Snowflake, Mahogany, Green & Grey

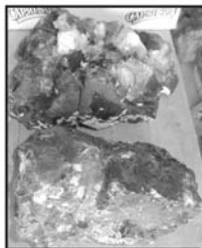
**Geodes:** Iowa, Illinois, Mexico, etc. (Small to Landscaping Size) Desert Chalcedony & Selenite

**Crystals:** Quartz, Calcite, Fluorite, Large Masses, Pyrites, Galena, Sphalerite, Azurite, Selenite, Malachite

**River Rocks:** Many Flats

**Jewelry:** Amber, Copper, Agates, Quartz, Cabs & Free Form Settings, Bracelets, Rings, Earrings & Necklaces

**Equipment:** Sphere Machines - 2 Barrel & 3 Barrel, Trim Saws, Tumblers, 6" Geni (Excellent condition) Drawers of Good Equipment, Display Cases, Work Benches and Desks, Lights, Stools, Large Collection of Bone Meal Statues Fluorescent Collection with 4X6 Display Case Masses of specimens from 40+ years of collecting. Many More Items Too Many to Itemize!!!!



MANY MORE PICTURES ON [WWW.BROCKAUCTION.COM](http://WWW.BROCKAUCTION.COM)

## WAYNE GRIES, OWNER

Bruce R. Brock

Broker

World Champion Auctioneer

30 Plymouth St. SW

Le Mars, Iowa 51031

712-548-4634 Office

877-653-4016 Toll Free



BROCK AUCTION CO., INC.



Iowa, Nebraska & South Dakota

Darrell Scott - Mapleton, IA - 712-208-0003

Brian Rubis - Le Mars, IA - 712-253-5481

Steve Gaul - Hawarden, IA - 712-551-2586

Adam Karrels - Sturgis, SD - 605-490-1701

Pat Robeson - Merville, IA - 712-259-1734

John Herryty - Elk Point, SD - 712-259-6408

Troy Donnelly - Elk Point, SD - 712-899-3748

## LGMC, Inc. AWARDS NOMINATION FORM

The Lincoln Gem and Mineral Club, Inc. Board of Directors encourages all individual members to utilize this Nomination Form to recognize club members who have made outstanding contributions to the club. Let's show our appreciation to that special person who goes out of the way to make the club the best it can be!

**RULES:**

- ◆ Nominate as many deserving club members as you like.
- ◆ One nomination per form.
- ◆ Write a brief description of how your nominee has made outstanding contributions to LGMC. Submit the strongest case possible. Form should be organized and easy to evaluate. An additional sheet may be attached if more space is needed.
- ◆ Submit the Nomination Form to the Awards Committee by **September 30**.
- ◆ The Awards Committee will evaluate the nominations, and forward the acceptable Nomination Forms to the Board of Directors, which will select finalists at its November Board meeting.
- ◆ Each finalist will be honored at the annual Christmas Party in December.

**AWARDS DEFINITIONS:**

- The LGMC Rockhound of the Year Award is to honor an individual (or a couple) who has shown outstanding service during the past year (October through September).
- The LGMC Service Award is to honor an individual who has made outstanding contributions during his/her entire membership.

Check **one** of the following nomination categories:

- \_\_\_\_\_ **“RockHound” of the YEAR**
- \_\_\_\_\_ **10 YEAR SERVICE AWARD**
- \_\_\_\_\_ **20 YEAR SERVICE AWARD**
- \_\_\_\_\_ **30 YEAR SERVICE AWARD**
- \_\_\_\_\_ **40 YEAR SERVICE AWARD**
- \_\_\_\_\_ **SPECIAL AWARD (to be named)**\_\_\_\_\_

1. Name of Nominated Person:

---

2. Address of Nominated Person:

---

3. Individual’s Contributions to LGMC: *(See the criteria list on page 2 of this form for service categories to be considered for this award)*

---



---



---



---

4. State examples of how this individual educates others about the Earth Sciences associated with Rockhounding:

---

5. State examples that this individual observes & promotes the American Federation of Mineralogical Societies "Code of Ethics":

---

6. Summarize why this individual is being nominated as recipient of an award

---



---



---



---



---

\*\*\*\*\*

Person Nominating the above individual:

Name:

Phone:

E-mail:

**Return this form no later than September 30 to:**

Richard Peterson, [padr20@yahoo.com](mailto:padr20@yahoo.com), 2720 S. 74<sup>th</sup> St., Lincoln 68506;  
 Charles Wooldridge, [charles.wooldridge@nebraska.gov](mailto:charles.wooldridge@nebraska.gov), 6115 Huntington, Lincoln 68507; or  
 James Marburger, [jm24122@windstream.net](mailto:jm24122@windstream.net), Box 64, Hickman 68372

**SUGGESTED CATEGORIES:**

*Serve as an LGMC officer*  
*Serve as an LGMC Board member*  
*Serve on the Show committee*  
*Serve on the Swap committee*  
*Serve on a standing committee*  
*Serve as a delegate to the MWF or NAES*  
*Attend LGMC monthly meetings*  
*Attend a club sanctioned field trip*  
*Attend meetings of another rock club*  
*Attend other Gem & Mineral shows*  
*Bring items to show at monthly meetings*  
*Promote and support Juniors' activities*  
*Present a program at a monthly meeting*  
*Demonstrate at a monthly meeting*

*Donate to the silent auction*  
*Present a program at an annual show*  
*Participate at Geology Day*  
*Participate at School event*  
*Participate at Science Fair*  
*Participate at Scouting Events*  
*Participate at the Grinding Party*  
*Participate in Adopt-a-Highway*  
*Present a talk to an outside group*  
*Host a monthly rock party*  
*Publish article or feature in the newsletter*  
*Publish article or feature in another newsletter*  
*Plan a club field trip*  
*Any Other Activities to promote our hobby and club*

| <b>STANDING COMMITTEES CHAIRMEN</b> |                                               |
|-------------------------------------|-----------------------------------------------|
| Audit                               | Ed Dvorak<br>James Marburger<br>Roger Pittard |
| Christmas Party                     | Edward Ridge                                  |
| Education / Librarian               | Charles Wooldridge                            |
| Facebook                            | Andrew Tiedje                                 |
| Field Trips                         | James Marburger                               |
| Geology Day Coordinator             | Charles Wooldridge                            |
| Grinding Party Coordinator          | Charles Wooldridge                            |
| Historian                           | Sharon Marburger                              |
| Legislative Liaison                 | Susy McMahan                                  |
| Membership Record                   | Edward Ridge                                  |
| MWF Liaison                         | Vera Lyman                                    |
| Programs                            | Jayne Beer                                    |
| Property                            | James Marburger                               |
| Refreshments / Door Prizes          | Vera Lyman                                    |
| Roadside Clean-up                   | James Marburger                               |
| Scholarship                         | Vera Lyman                                    |
| Show—2016                           | Ed Dvorak                                     |
| Swap—2016                           | Jayne Beer                                    |
| Website                             | Jim & Sharon Marburger                        |
| Youth Activities                    | Carolyn Ashmore<br>Susy McMahan               |

| <b>LONG RANGE PLANNING &amp; BY-LAWS COMMITTEE</b> |                                        |
|----------------------------------------------------|----------------------------------------|
| Jim Marburger, Chairman                            |                                        |
| 1 year:                                            | Vera Lyman<br>Ed Dvorak                |
| 2 years:                                           | Edward Ridge<br>Robert Cropp           |
| 3 years:                                           | Charles Wooldridge<br>Sharon Marburger |

| <b>NOMINATING COMMITTEE</b> |                                    |
|-----------------------------|------------------------------------|
| Jim Marburger, Chairman     |                                    |
| 1 year:                     | Brad Nielsen<br>Roger Pittard      |
| 2 years:                    | Vera Lyman<br>Edward Ridge         |
| 3 years:                    | Robert Gritmit<br>Sharon Marburger |

| <b>ADVERTISING, SUBSCRIPTION, AND MEMBERSHIP INFORMATION</b>                                                                                                                                                                                                                                                                                                                                                                                                                                                                                                                                                                                                                                                                                                                                                                                                                               |
|--------------------------------------------------------------------------------------------------------------------------------------------------------------------------------------------------------------------------------------------------------------------------------------------------------------------------------------------------------------------------------------------------------------------------------------------------------------------------------------------------------------------------------------------------------------------------------------------------------------------------------------------------------------------------------------------------------------------------------------------------------------------------------------------------------------------------------------------------------------------------------------------|
| <p>Advertising by rock / hobby business or interest is permitted with the approval of the Board of Directors. Contact the Editor with your proposed ad. The rate is set at \$20.00 per full page; \$10.00 per 1/2 page; \$5.00 per 1/4 page (minimum) per issue, paid in advance to the Club treasurer. Ads will be placed throughout the newsletter as space permits.</p> <p>Subscription to the Pick &amp; Shovel is \$15.00 per year for mailed copy.</p> <p>Membership dues for the Lincoln Gem &amp; Mineral Club are as follows:</p> <p>Adults (age 16 and over) - \$15 per year or \$25 per couple (within the same household)<br/>Juniors - \$2 per year (with a responsible adult)</p> <p>All new memberships must be accompanied by a written application. Prospective members must gain Board approval and attend one regular meeting before being approved for membership.</p> |

| <b>2016 SHOW COMMITTEE</b> |                                 |
|----------------------------|---------------------------------|
| Chairman:                  | Ed Dvorak                       |
| Breakfast:                 | Vera Lyman                      |
| Dealers:                   | Charles Wooldridge              |
| Demonstrators:             | Carrie Burkhardt                |
| Displays:                  | Jayne Beer, Ed Ridge            |
| Event Center Liaison:      | Vera Lyman                      |
| Finance & Ticket Sales:    | Jim Atkins, Vera Lyman          |
| Floor Chairman:            |                                 |
| Forms:                     | Sharon Marburger                |
| LGMC Club Booth:           |                                 |
| Nebraska Gem Dig:          | Charles Wooldridge              |
| Plants:                    | Ed Ridge                        |
| Printed Program:           | Sharon Marburger                |
| Publicity & Promotion:     | Jim Marburger                   |
| Ribbons & Recognitions:    | Sharon Marburger                |
| Security:                  | Vera Lyman                      |
| Show Flyer:                | Sharon Marburger                |
| Silent Auction:            | Andrew Tiedje                   |
| Special Features:          |                                 |
| Web Master:                | Jim & Sharon Marburger          |
| Youth Activities:          | Carolyn Ashmore<br>Susy McMahan |

A color version of the Pick & Shovel is available at:  
<http://www.lincolngemmineralclub.org/index.php/newsletters/current>



Mail Exchange Newsletters  
 to:  
 Lincoln Gem & Mineral Club,  
 Inc.  
 P.O. Box 5342  
 Lincoln, NE 68505-0342

# PICK & SHOVEL

THE *Pick & Shovel* IS THE OFFICIAL PUBLICATION OF THE LINCOLN GEM & MINERAL CLUB, INC., LINCOLN, NEBRASKA. **ARTICLES AND ITEMS APPEARING WITHIN MAY BE REPRODUCED IN OTHER CLUB BULLETINS, PROVIDED PROPER CREDIT IS GIVEN TO THE *Pick & Shovel* AND THE AUTHOR, AND THAT A REPRINT OF THE ARTICLE IS SENT TO THE EDITOR OF THE *Pick & Shovel*.**

## YOUR PICK & SHOVEL STAFF:

**PUBLISHER:** LINCOLN GEM & MINERAL CLUB, INC., P.O. BOX 5342, LINCOLN, NEBRASKA 68505-0342

**EDITOR:** SHARON MARBURGER, P.O. BOX 64, HICKMAN, NEBRASKA 68372, E-MAIL: LGMC.EDITOR@WINDSTREAM.NET

**CIRCULATION:** VERA LYMAN, 402-464-6089

**REPORTERS:** ALL MEMBERS ARE ENCOURAGED TO SUBMIT FEATURES, ARTICLES, POETRY, OR DRAWINGS.

## LGMC is a member of:



This Editor is a member of  
**Special Congress  
 Representing Involved  
 Bulletin Editors**

