



PICK & SHOVEL

P.O. Box 5342, Lincoln, Nebraska 68505-0342, www.lincolngemmineralclub.org

The purpose of this corporation shall be to study, promote an interest in, and disseminate knowledge of lapidary and various Earth Sciences including but not necessarily limited to Geology, Paleontology and Mineralogy. It shall be a particular purpose of the corporation to provide education in these fields to its members and the general public, especially to youth and student groups.

UPCOMING EVENTS

2014 Meetings and Activities

Board

- Wed., Sep 3 (Gere Library)
- Wed., Oct 1 (Gere Library)
- Wed., Nov 5 (Gere Library)
- Wed., Dec. 3 (Gere Library)

General

- Thurs., Sep 18
- Thurs., Oct 16
- Thurs., Nov 20
- Sun., Dec 7

Activities

Rock Party - June 21

Field Trip to Ashfall Fossil Beds & Verdigre, NE - June 21

- Sun., Jul 13 - Grinding Party
- Rock Party July 26
- Rock Party August 16

June Birthdays:

- Carolyn Ashmore
- Jayne Beer
- Ed Ridge
- Breanna Suhr
- Sarah Suhr

Regular monthly meetings are held at 7:00 p.m. at the Bethany Park Shelter House. Youth activities begin at 6:00 p.m. Summer activities will be announced as they are

General Meeting

Summer Break
Check "Activities"
at the left to find summer fun!

Mineral Monkeys

Summer Break
Check "Activities"
at the left to find summer fun!

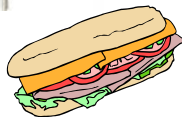


Happy Birthday, American Flag!

June Rock Party

Host: Rowdy Cropp
Saturday, June 21, 4:00 p.m.

Auld Recreation Center
3140 Sumner



Rowdy will provide sandwich makings. Bring your salads, chips, desserts, etc. The party will take place at the Lapidary Class, in the park, or both. Regardless, be prepared to have fun as our parties are always the best in town! Bring your projects and/or plan to teach someone something new!

The Ashfall field trip is scheduled for this same day. If you cannot attend the field trip, please support the Rock Party. You will have fun no matter which event you attend. Let's Rock, People!!

BOARD OF DIRECTORS

President

Ed Dvorak, 402.946.3041
ed20649@windstream.net

1st Vice-President

Richard Peterson, 402.489.2996
padr20@yahoo.com

2nd Vice-President

Jayne Beer, 402.890.3307
JBeer60070@aol.com

Treasurer

Vera Lyman, 402.464.6089

Secretary

Sharon Marburger, 402.792.2348
lgmc.editor@windstream.net

Board Member

Carolyn Ashmore, 402.325.8878
saturn1_101@hotmail.com

Board Member

Jim Atkins, 402.483.1610
jna@inetnebr.com

Board Member

Susy McMahan, 402.464.0065
blueriverjewelry@neb.rr.com

Board Member

Charles Wooldridge, 402.416.3233
charles.wooldridge@nebraska.gov

PRESIDENT'S MESSAGE

by Ed Dvorak, President

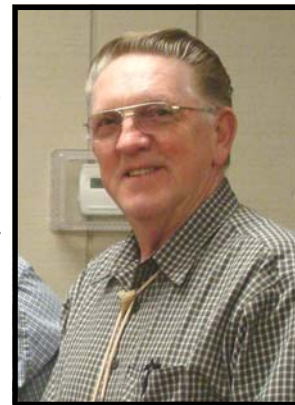
We are heading into summer fun, collecting, and many interesting field trips. Just remember to be aware of your surroundings and take notice of the weather. I want everyone to make some very happy memories to keep with you and share with your friends.

I want to thank everyone who participated in the "roadside pick-up." GREAT JOB! Those of you who could not make it you missed some very YUMMY! food and great togetherness. Don't worry if you missed this one; we still have more clean-up to come.

Everyone who joined the Fort Dodge club in Jesup, Iowa had a good time and found some very nice geodes with a little work--but it was worth it.

Those of you who do not receive the "ROCK & GEM" publication, there are some nice Facebook web sites on our hobby. (www.facebook.com/groups/lapidarygroup and www.facebook.com/groups/agatecollectorsworldwide).

I look forward to hearing about your summer activities. Be happy and stay safe.



Vera is now undergoing physical therapy for her injured shoulder. She is feeling better. How do I know? She is bored out of her head! Give her a call or check to see if she is receiving visitors.

ANOTHER FRIEND - GONE

by Sharon Marburger

Former member, Francis Belohlavy, passed away in his sleep on April 9, 2014 at the age of 62. He was the last of his family.

Many of us supported Francis in his move to Texas a couple of years ago by purchasing rocks and specimens from him - lots and lots of rocks!!

Francis had many hobbies and interests over the years. He went "whole hog" into whatever his current interest was. In addition to being a rockhound, he was a blacksmith and a soil scientist.

Francis had a huge heart. He helped anyone and everyone in whatever way he could. He helped Jim in the rock shop with gem and mineral shows across the Midwest..

We will miss you, Francis.



REFRESHMENTS

Sep 18:

Carrie Burkhart & Sharon Marburger

Oct 16:

Sara Burden & Sharon Marburger

Nov 20:

Carolyn Ashmore & Vera Lyman

December 7:

Christmas Party

January 2015

Everyone brings snacks for Swap Anniversary Cake

GENERAL MEETING MINUTES

May 15, 2014, Bethany Park Shelter House
Respectfully submitted by Sharon Marburger

- ◆ Meeting called to order at 7:06 p.m. by President Ed Dvorak.
- ◆ 24 Adult members, 9 Mineral Monkeys, 1 guest (Andy Zarins)
- ◆ Pledge of Allegiance to the Flag
- ◆ The minutes of the April meeting were published in the *Pick & Shovel*. Jim Marburger moved to accept the minutes as printed, second by Bob Gritmit, carried.
- ◆ The Treasurer's Report was read by President Dvorak in the absence of Treasurer Lyman. Charlie Messenger moved to accept the report as read, second by Karen Messenger, carried.

OLD BUSINESS

- ◆ The Joint Field Trip with the Fort Dodge, Iowa club will be May 24. We will meet in Fort Dodge and travel to Jesup, Iowa for collecting geodes.
- ◆ The Roadside Clean-up will be done on May 31. Chairman Jim Marburger asked members to sign up so he could assign road sections.
- ◆ The April Rock Party was outstanding! Thanks to Ed Ridge for the Easter egg hunt and all the wonderful specimens he provided.

NEW BUSINESS

- ◆ Rowdy Cropp volunteered to host the June Rock Party at the Lapidary Class location, Auld Center, on June 21 at 4:00 p.m. He plans to provide sandwich makings for the potluck.
- ◆ Bruce Sturges plans to have an all day Rock Party event in July. Details to come later.
- ◆ Bruce commented on the Sole's rock sale advertisement. He viewed the collection and says it contains great specimens.

The meeting adjourned at 7:19 p.m. on a motion by Bob Gritmit and second by Karen Messenger, to the Department of Roads' clean-up video and the video "How to Find Agates" by Karen Brzys, Gitche Gume Museum.

JESUP, IOWA FIELD TRIP

by Jim Marburger, Field Trip Chairman

On the morning of May 24, 2014, while Sharon was filling the car up with gas in Fort Dodge, Iowa, what did she hear? "Hey SHARON!" Yes, it was the Beers driving by on the way to find rock landscaping for Corey and Brian to hunt near the meeting point for the field trip with the River Valley Rockhounds of Fort Dodge. After fueling, we met up with President and field trip leader, Robert Wolf. As participants assembled for the trip, Robert passed out samples of gypsum and selenite that was found in the area.

It was about a two-hour drive from Fort Dodge to Jesup. At the halfway point, there was a truck stop where we stretched our legs and purchased lunch and snack items. The truck stop was very busy. Oh yeah, there was landscape material there also and the Laker hunters were out in force. The group continued on to Jesup without four cars because the humans were agate licking and talking. When we realized we were left behind, we jumped into the cars and tried to catch up with the group.

We were 15 to 20 minutes behind the leaders, but I had directions to the site with me. I was doing well until we missed a sign to the county road we were to take. A backtrack of a couple of miles put us further behind, but we were close. There was some concern about whether we were on the correct road because the "gravel road" we were supposed to be on was actually paved.

When our group finally arrived at the collection site, there were 10 rock pups, 25 people from Iowa, and 10 members along with two new Mineral Monkeys from the Lincoln club, ready to dig geodes.



(Continued on page 4)

JESUP, IOWA FIELD TRIP - CONT'D

(Continued from page 3)



The pit where the geodes were found was on private property. It was a barrow pit that was an easy walk into. There were shovels, picks,

hammers, and buckets everywhere, and the soundS of digging filled the air. The limestone had to be peeled back to reveal the geodes as small walnut size bumps to a few that were near 10 inches in size. Calcite crystals having a secondary growth of brown calcite made them look purple when first pulled out of the ground and opened.

The day was beautiful with cool sunshine and no bugs. After about three hours of digging, most people started leaving for the return trip home with a good number of geodes. They left with not only geodes, but stories of the fun had on a great day in Iowa.



This is what made it home with the Marburgers.

I forgot to mention that we were told no Lakers could be found in the Fort Dodge/Jesup area. Of course, our very own Laker-hound, Corey, found several Lakers in the landscape rock, both in Fort Dodge and at the truck stop. To Sharon's frustration and aggravation, Corey picked up a Laker she had just stepped over! Darned "pretty rock syndrome!" When he showed the River Valley Rockhounds members what he had found in the landscaping, he received the exclamation, "WOW! Where DID you find those?!!"

Thank you, LGMC members who attended. A gigantic thank you to the Fort Dodge club for hosting the dig. We are hosting a reciprocal field trip to Royal, Nebraska to visit the Ashfall State Historical Park on June 21, 2014, followed by a hunt at a gravel pit in the area as a thank you to the River Valley Rockhounds. Please see the article on page 5 in this *Pick and Shovel* for more information. I hope to see you there.



By the way, if you have questions about fossils, Robert Wolf is the man to talk to. He has written two field guides on the fossils of Iowa. You can find comprehensive coverage of more than 150 sites in Iowa and the adjacent areas of Minnesota and Nebraska, with the types of fossils found and precise directions, at <http://www.robertcharleswolf.net/works.htm>.



photos by Jim & Sharon Marburger

New members, the Kempers, searched with exuberance!



If you are ever in need of a nametag, take note of President Ed's impromptu nametag.

FIELD TRIP TO ASHFALL STATE HISTORICAL PARK

by Jim Marburger, Field Trip Chairman

On June 21, 2014, we will meet up with the Fort Dodge, Iowa River Valley Rockhounds at 12:00 p.m. at the Ashfall State Historical Park Visitor Center, 517th Avenue, Royal, Nebraska. This location is about four hours from both Fort Dodge and Lincoln, so it will be a long day trip. Consider making it a weekend trip.

The following was copied from the web site <http://ashfall.unl.edu/visit.html>.

Our first stop should be the interpretive displays and the fossil preparation laboratory. You are invited to ask the paleontologists about their work. Educational programs are presented on a regular basis. From the Visitor Center, it is but a short stroll to the Hubbard Rhino Barn, where new discoveries continue to be unearthed.

Ashfall is situated on 360 acres of rugged rangeland in the scenic Verdigre Creek Valley. Nature trails were developed to help interpret the geology as well as the flora and fauna of the area. Picnicking is permitted on the park, and campers can use nearby Grove Lake Wildlife Management Area near Royal.

Collecting fossils or other specimens on the park grounds is strictly prohibited. (If every visitor took a "souvenir," one of Nebraska's natural historic treasures would be gone forever.) Preservation of Ashfall now and for future generations is made possible by the generosity of the Nebraska Game and Parks Foundation, which purchased the land in 1986,

and the Burlington Northern Foundation, which supplied a grant for construction of facilities.

Paleontologists and interpretive staff at the site are provided by the University of Nebraska State Museum.

Park Information:

May 23-Sept 1:

Monday-Saturday 9 a.m. - 5 p.m.

Sunday 11 a.m. - 5:00 p.m.

Admission: Entrance fee *AND* valid Nebraska Park Entry Permit required.

Entrance Fee: \$5.00 per person age 3 and older

Park Entry Permit: \$5.00 Daily Permit -OR- \$26.00 Annual Permit

After visiting the park, there will be a short drive to a gravel pit near Verdigre, Nebraska to collect items from the oversize rock pile. Agate, jasper, petrified wood, and, possibly, fossils can be located. The pit owner will have some piles to collect on. The area will be limited to the pile area only. Directions to the pit will be given to attendees at the Ashfall site. I am working on getting permission to collect on a second pit in the area.

Boots, hats, safety vests, tools, collection containers, water, and bug and sunburn sprays are some of the items you will need. Facilities are limited to very small towns of under 500 people.



LINCOLN CURIOS ROCK SHOP

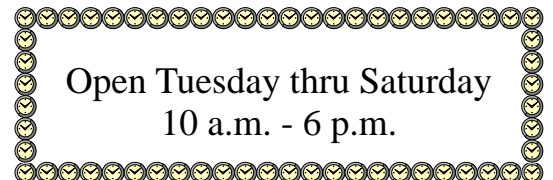
6625 Burlington - Lincoln, NE 68507 [Park in alley]

(402) 310-3307

▶ SPECIALIZING IN ARIZONA PETRIFIED WOOD ◀

- ◆ Rough stones and fossils for the hobbyist
- ◆ Polished stone items for interior décor
- ◆ Great selection of tumble-polished stones

Open Tuesday thru Saturday
10 a.m. - 6 p.m.



BYOG PARTIES IN JULY & AUGUST!

by Bruce Sturges

“Bring your Own Grinder” parties will be held at Bruce Sturges’ house in Omaha. They will be all day events, including a potluck lunch each day (bring a favorite food and, if you bring meat, we can barbeque). There will be folks from the Lincoln and Omaha clubs, plus maybe some non-members. We just need to know what type/size of machine you are bringing and which date (or both!) you would like to attend.

If you have a few pieces of rough you want ground but have no machine, you have an interest in what cutting is all about, or you just want to talk about rocks/minerals/gemstones, this is the place to be!

We will have parties on two different days - you are welcome to attend either or both.

**July 26
and
August 23**

Please e-mail Bruce at bruce@tftgeo.com or call 402.680.4051 to make a reservation and get directions to his house. Reservations are required and are limited to 20 people each day. Stake your claim now!



FAITH LUTHERAN FIELD TRIP

by Nancy Akins

Faith Lutheran 1st graders enjoyed a field trip to Lincoln Curios Rock Shop on April 19. There were 18 students; teacher, Mrs. Judy Ripke; and several parents. We all enjoyed trying nature’s magnet (lodestone), discussing different fossils, fun with the age-old baking soda & vinegar volcano, followed by hands-on study of different igneous rocks. They found the pockets of sparkling green peridot in basalt; considered obsidian for arrowheads; had a general discussion on igneous, metamorphic and sedimentary rocks; and discussed the eruption of Mt. St. Helens in the U.S. followed by examination of the ash and hearing evacuation stories.

It was a busy afternoon looking through agate slices, identifying fossils, writing with graphite, scratching talc, and finding their favorite rock. The kids had a great time.



photo provided by Judy Ripke

J J & L Rocks & Minerals

P.O. Box 68
Hickman, NE 68372

Lee Harrison
Eric Harrison
402.792.2337

330 Locust
Hickman, NE 68372

James Marburger
Sharon Marburger
402.792.2348

jimandjohn@jjlrocksandminerals.com
www.jjlrocksandminerals.com
jjlrocksmin - Ebay Username



Proudly serving
the hobby for
36 years

MINERAL MONKEYS

by Martin Dougherty

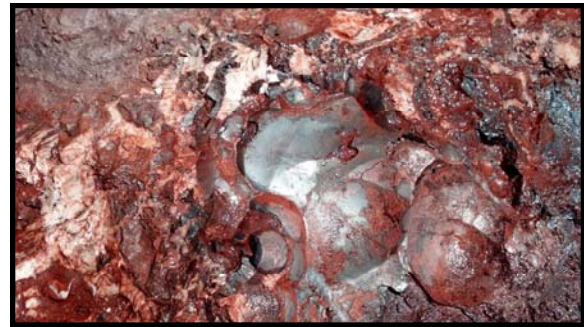
Hey Mineral Monkeys and leaders. You may recall Linda and I gave you hematite specimens at the show. The pictures here were taken at the location we collected the specimens, Yavapai Ranch in Arizona. The hematite is found in an exposed seam off the side of the Williamson Valley Road and is part of an extensive underground mining operation, from the 1940s, for the [World War II] war effort.



photos by Martin Dougherty



Linda looking for specimens



~ SALE ~ ~ ~ SALE ~ ~ ~ SALE ~ ~ ~ SALE ~ ~ ~ SALE ~
ROCKS AND MINERALS : Collection of 50+ Years

Weekend Sale Dates
July 18, 19, 20
and
July 25, 26, 27

1646 Highway 14
Nelson, Nebraska

1½ miles north of Nelson, Nebraska
East side of Highway 14

- ◆ Geodes
- ◆ Crystals
- ◆ Un-cut Rocks
- ◆ Pre-cut Rock Slabs
- ◆ Pre-cut Cabochons
- ◆ 3 Buffalo Skulls
- ◆ Fossils
- ◆ Miscellaneous Minerals
- ◆ Lapidary Equipment

For More Information Contact:

Karen Sole

Home: 402.225.4203

Cell: 402.879.5599

Page 8 - VOICE NEWS, Thursday, June 5, 2014

Denton Historical Society learns Indian culture

On May 27, the Denton Community Historical Society was treated to a fun evening watching a tipi being erected on the Denton Community Center lawn. Mark Awakuni-Swetland conducted the narration as his sons, Micah and Kea, built the tipi.

It takes a total of 15 poles, and most poles are made of Lodge Pole Pine. A canvas cover is stretched and tied to the poles; the poles are reset to stretch the canvas and staked down. The opening is laced up with lacing pins made out of choke cherry or bitter cherry. The flap at the top is used to open or close to let the smoke out as well as keeping rain out or fresh air in. When the tipi is complete with the inner lining and rugs in place, it is virtually a very cozy, warm home. As Swetland says, the Indians did not only survive, they thrived!

This particular tipi has withstood tornadic winds at the Indian Center in Lincoln and was the only one standing because it was constructed to the specifics of the Indian Culture. Swetland has used this tipi throughout his life when camping as well as at Indian ceremonies and gatherings.

Along with the tipi history and information, Swetland told about tipi etiquette. When one first enters a tipi, they sit down. It is impolite to stand and look down on

people. Also, if you stand, you are inhaling the smoke and when they made the song, "Smoke Gets In Your Eyes," they must have been thinking tipis! Your nose runs, your eyes water and you look a



Mark Awakuni-Swetland's sons, Micah Swetland left, and Kea Swetland right set up the tent as Dad narrates.

Photos submitted

mess, so it is always the proper thing to sit down as fast as you can.

The belts and apron and all things beaded were hand done by Swetland following the Indian culture of beading as well as the Indian designs. He touched on the ceremony dress and custom dress of the Indians. The moccasin is one item that is the most important, it is the first thing you get when you are born and the last thing you're given when buried. The white man's blue jeans and shirt were adopted readily by the Indian culture.

Swetland is a faculty member at the University of Nebraska-Lincoln. He holds a joint appointment in the Department of Anthropology and the Institute for Ethnic Studies/ Native American Studies program. He teaches various courses with Native American content, Great Plains

content, and primitive technology content as a cultural anthropologist. In the past years, he has taught a three-week ethnographic field school study at the Reller Natural History Study Area just southwest of Sprague.

It was a very informative and fun program and made better with refreshments of cookies and ice cream!

Our next DCHS function will be a silent auction to be held at the VFW in Denton on Saturday, June 14, to raise money for our museum and will be held from 4 p.m. to 8 p.m., at which time karaoke singing will begin. Everyone is welcome to come and bid on some really nice items.

There will be no regular meeting in June, but on July 22, Theresa Sullivan will be interviewing Mavis Reller, who is of the Reller's from the Reller Natural History Study Area by Sprague. Swetland talked about. Everyone is welcome.



Mark Awakuni-Swetland gives his talk to the group.

ALAA EXCERPT FROM TOM NOE

GETTING INVOLVED IN THE BLM'S SPECIAL RECREATION PERMIT SYSTEM

By Shirley Leeson, ALAA President

Following a fatal accident during commercial racing competition in Johnson Valley (California) a few years ago, the Bureau of Land Management (BLM) established a subgroup to review their process of issuing Special Recreation Permits (SRP) and to create a new booklet for use with respect to competitive events. That process is now complete, and the focus is now on Special Recreation Permits for noncompetitive events. Because this would encompass rock/gem/mineral field trips, I have been very concerned and expressed my interest in being involved, and I offered to chair the subgroup when the previous chair stepped down.

Dee Holland and I attended the Desert Advisory Council subcommittee meeting in December, 2013. First on the agenda was to consider permits for "others" using the California desert. (The commercial

permits have been finalized and now they are searching for "others" to control and contain.) The contents of their recreation permit proposal are taken from one written for Moab, Utah (they didn't even write their own), but it was easily adapted to cover the California desert.

While rockhounds in the past have been lumped under "recreation, casual use, and casual rock collecting," the proposal suggested that we now come under "special permits." So, instead of going to the desert whenever we want, we'd have to apply for a permit 60 to 90 days ahead of time and, after jumping through all the many hoops listed, we could be turned down by the BLM for any number of reasons. Also, we were told on a number of occasions during that meeting, by the BLM district manager, that using our public lands "is a privilege, not a right," and a group has been defined as "one or more." If this is to pass, the days of field trips to the southern California desert by clubs from anywhere would seriously be jeopardized.

- ◆ Edited and excerpted from the ALAA Newsletter (Jan-Mar, 2014)
- ◆ ALAA is the lobbying arm of the American Federation, working on behalf of rockhounds to keep public lands open and accessible to all, including the elderly and handicapped. (Entire newsletter is available at amlands.org)



LGMC is a proud member of ALAA

Silversmithing classes

**The Jewelry Connection Ltd.
Indian Village Shopping Ctr.
13th & Arapahoe Lincoln**

Tuesdays

August 12, 2014

thru

September 30, 2014

7:00 p.m. - 9:00 p.m.

Fee: \$120 plus \$30 supply deposit

Contact:

Jane Beer 402-890-3307

Liz With Bay 402-423-7058

or e-mail

jbeer60070@aol.com



MAY ROCK PARTY AND ROADSIDE CLEAN-UP

by Jim and Sharon Marburger

Saturday, May 31 started out as a beautiful, sunny day in Hickman. As the day progressed, big, puffy clouds started moving in. Oh dear, was it going to rain on us while doing the roadside clean-up?

Ed and Pat Dvorak arrived at the house with food for the potluck. Once the vittles were safe and secure from the cats, we drove to the Hickman Rest Area to meet up with the rest of the roadside clean-up crew.

At approximately 1:00, Jim Marburger handed out safety equipment and road section assignments. There was a "hold your breath" couple of minutes while the clouds chose to sprinkle on us, then the nice breeze chased them off to reveal warm sunshine. Thankfully, the clouds intermittently covered the sun, so we stayed quite comfortable.

Fourteen adults and four children went forth to collect trash from the shoulders and ditches of our assigned portion of Highway 77. Those present were Carolyn Ashmore and grandchildren Jayden and Mia; Ed and Pat Dvorak; Linda Guenter; Sharon Schleiger and her kids Matt and Brooklyn; Bruce Collamore; Steve May; Ed Ridge; Brian and Jayne Beer with son, Corey; Sharon Marburger; and future members Rikki Goldsby and Ruby Nesta. Jim Marburger drove up and down the highway, providing drinking water and more trash bags to those in need. Paul Ashmore received special dispensation to stay with the cars, due to recent back surgery.

The clean-up took about 2½ hours, due to one team getting a very late start. (Ed R. and Sharon M. were helping to set up the safety signs, so they didn't get started on their section of road until about 20 minutes after everyone else.) As the teams completed their sections, they headed to the Marburgers' house to wait for the potluck to begin. Everyone, that is, except for the Beers. They went agate hunting for a while, but soon their tummies won out over the potential finding of agates.

Thanks to Pat Dvorak for preparing roast turkey, dressing, and pineapple upside down cake. I heard the cake was out of this world! I believe it because there was not a crumb left at the end of the evening! Thanks, also, to everyone else who contributed to the meal. There was cheese and crackers, chips, smoked meats, berry muffins, pasta salad, cole slaw, summer salad, assorted melons, and chili.

After eating, Ed Ridge cut a couple of cabochons while Sharon M. and Corey cut open some of the Jesup, Iowa geodes.

were solid. Hopefully, the ones that were too big to cut with the Genie saw will be hollow and filled with crystals.

After all the fresh air and exercise, followed with eating turkey, everyone was pretty tired. Most of the evening was spent sharing hobby stories and tales of field trips past.

All told, it was a very successful and fun day. Let's do it again in the fall!!!



Tired and hungry volunteers enjoy the scrumptious meal.



Jesup Geodes



STANDING COMMITTEES CHAIRMEN

Audit	Ed Dvorak James Marburger Roger Pittard
Christmas Party	Edward Ridge
Education / Librarian	Charles Wooldridge Judy (Leick-Cropp) Anson
Facebook	Andrew Tiedje
Field Trips	James Marburger
Geology Day Coordinator	Jayne Beer
Grinding Party	Jayne Beer
Historian	Sharon Marburger
Legislative Liaison	Susy McMahan
Membership Record	Edward Ridge
MWF Liaison	Vera Lyman
Programs	Jayne Beer/Judy Anson
Property	James Marburger
Refreshments / Door Prizes	
Scholarship	Vera Lyman
Show—2015	Ed Dvorak
Swap—2015	Jayne Beer
Website	Jim Atkins
Youth Activities	Carolyn Ashmore Susy McMahan

LONG RANGE PLANNING & BY-LAWS COMMITTEE

Jim Marburger, Chairman

1 year:	Charles Wooldridge Sharon Marburger
2 years:	Vera Lyman Ed Dvorak
3 years:	Edward Ridge Robert Cropp

NOMINATING COMMITTEE

Jim Marburger, Chairman

1 year:	Brad Nielsen Roger Pittard
2 years:	Vera Lyman Edward Ridge
3 years:	Robert Gritmit Sharon Marburger

ADVERTISING, SUBSCRIPTION, AND MEMBERSHIP INFORMATION

Advertising by rock / hobby business or interest is permitted with the approval of the Board of Directors. Contact the Editor with your proposed ad. The rate is set at \$20.00 per full page; \$10.00 per 1/2 page; \$5.00 per 1/4 page (minimum) per issue, paid in advance to the Club treasurer. Ads will be placed throughout the newsletter as space permits.

Subscription to the Pick & Shovel is \$15.00 per year for mailed copy.

Membership dues for the Lincoln Gem & Mineral Club are as follows:

- Adults (age 16 and over) - \$15 per year or \$25 per couple (within the same household)
- Juniors - \$2 per year (with a responsible adult)

All new memberships must be accompanied by a written application. Prospective members must gain Board approval and attend one regular meeting before being approved for membership.

2015 SHOW COMMITTEE

Chairman:	Ed Dvorak
Breakfast:	Vera Lyman
Dealers:	Charles Wooldridge
Demonstrators:	Carrie Burkhart
Displays:	Jayne Beer, Ed Ridge
Event Center Liaison:	Vera Lyman
Finance & Ticket Sales:	Jim Atkins, Vera Lyman
Floor Chairman:	Dvorak/Wooldridge
Forms:	Sharon Marburger
LGMC Club Booth:	Bob Gritmit
Nebraska Gem Dig:	Charles Wooldridge
Plants:	Ed Ridge
Printed Program:	Sharon Marburger
Publicity & Promotion:	Jim Marburger
Ribbons & Recognitions:	Sharon Marburger
Security:	Vera Lyman
Show Flyer:	
Silent Auction:	Carrie Burkhart
Special Features:	
Web Master:	Jim Atkins
Youth Activities:	Carolyn Ashmore Susy McMahan

If there is something you would like to do for the Show or to help with planning of the Show, let Ed Dvorak know.



Mail Exchange Newsletters to:
 Lincoln Gem & Mineral Club, Inc.
 P.O. Box 5342
 Lincoln, NE 68505-0342
 Or e-mail newsletters to:
 lgmc.editor@windstream.net

PICK & SHOVEL

THE *PICK & SHOVEL* IS THE OFFICIAL PUBLICATION OF THE LINCOLN GEM & MINERAL CLUB, INC., LINCOLN, NEBRASKA. **ARTICLES AND ITEMS APPEARING WITHIN MAY BE REPRODUCED IN OTHER CLUB BULLETINS, PROVIDED PROPER CREDIT IS GIVEN TO THE *PICK & SHOVEL* AND THE AUTHOR, AND THAT A REPRINT OF THE ARTICLE IS SENT TO THE EDITOR OF THE *PICK & SHOVEL*.**

YOUR PICK & SHOVEL STAFF:

PUBLISHER: LINCOLN GEM & MINERAL CLUB, INC., P.O. BOX 5342, LINCOLN, NEBRASKA 68505-0342

EDITOR: SHARON MARBURGER, P.O. BOX 64, HICKMAN, NEBRASKA 68372, E-MAIL: LGMC.EDITOR@WINDSTREAM.NET

CIRCULATION: VERA LYMAN, 402-464-6089

REPORTERS: ALL MEMBERS ARE ENCOURAGED TO SUBMIT FEATURES, ARTICLES, POETRY, OR DRAWINGS.

LGMC is a member of:

