



PICK & SHOVEL

P.O. Box 5342, Lincoln, Nebraska 68505-0342, www.lincolngemmineralclub.org

The purpose of this corporation shall be to study, promote an interest in, and disseminate knowledge of lapidary and various Earth Sciences including but not necessarily limited to Geology, Paleontology and Mineralogy. It shall be a particular purpose of the corporation to provide education in these fields to its members and the general public, especially to youth and student groups.

UPCOMING EVENTS

2014 Meetings and Activities

Board

Wed., Apr 2 (Lyman's home)

Wed., Apr 30 (Gere Library)

Wed., Sep 3 (Gere Library)

Wed., Oct 1 (Gere Library)

Wed., Nov 5 (Gere Library)

Wed., Dec. 3 (Gere Library)

General

Thurs., Mar 20

Thurs., Apr 17

Thurs., May 15

Thurs., Sep 18

Thurs., Oct 16

Thurs., Nov 20

Sun., Dec 7

Activities

Thurs., Mar 20 - Science Fair

Apr 4-6 - Setup and Show

Sun., Jul 13 - Grinding Party

Regular monthly meetings are held at 7:00 p.m. at the Bethany Park Shelter House. Youth activities begin at 6:00 p.m. Summer activities will be announced as they are planned.

General Meeting

March 20, 2014
7:00 p.m.

Program: No program. We will discuss last minute Show plans.

Mineral Monkeys

March 20, 2014
6:30 p.m.

Lesson: No Lesson. You will be attending the Science Fair.

**No Rock Party this month.
Finalizing Show plans.**

REGIONAL SHOWS

15-16: CEDAR RAPIDS, IA Hawkeye Downs 4400 6th St. SW Cedar Rapids Iowa Contact information @ 319-364-2868 Marv Houg or 319-551-3870 Tom Whitlatch or through the clubs web site. www.cedarvalleyrockclub.org

21-23 ST. LOUIS COUNTY, MO. Rock Hobby Club of Greater St. Louis' Annual Show; Machinist Hall Auditorium, 12365 St. Charles Rock Road (Bridgeton), Fri. 4-9 p.m., Sat. 10-7, Sun. 10-5; Contact: Willis Smith, Publicity, 314.521.8896 or Roy Hurlburt, 314.846.0711.

22-23: DES PLAINES, IL. Des Plaines Valley Geological Society's 49th Annual Gem, Mineral and Fossil Show; Des Plaines Park District Leisure Center, 2222 Birch St.; Sat. 9:30-5, Sun. 10-4; Contact: Jeanine N. Mielecki, (773) 774-2054 or jaynine9@aol.com or Lois Zima, 420 Cordial Dr., Des Plaines, IL 60018, (847) 298-4653.

March Birthdays:

Pat Dvorak

Jayden Eno

Jim Marburger

Greg Syslo

BOARD OF DIRECTORS

President

Ed Dvorak, 402.946.3041
ed20649@windstream.net

1st Vice-President

Richard Peterson, 402.489.2996
padr20@yahoo.com

2nd Vice-President

Jayne Beer, 402.890.3307
JBeer60070@aol.com

Treasurer

Vera Lyman, 402.464.6089

Secretary

Sharon Marburger, 402.792.2348
lgmc.editor@windstream.net

Board Member

Carolyn Ashmore, 402.325.8878
saturn1_101@hotmail.com

Board Member

Jim Atkins, 402.483.1610
jna@inetnebr.com

Board Member

Susy McMahan, 402.464.0065
blueriverjewelry@neb.rr.com

Board Member

Charles Wooldridge, 402.416.3233
charles.wooldridge@nebraska.gov

PRESIDENT'S MESSAGE

by Ed Dvorak, President

March came in like a lion, let's hope it goes out like a lamb. It would make for a great beginning for our Show. We have a great Club and membership. When it comes time for the Show, I know our membership will pull together and make it another great one!

If anybody has any concerns or questions please let me know. I will do what I can to answer your concerns or questions. Keeping them to yourself doesn't help; it only causes misunderstandings and makes the CLUB less friendly to you. Communication is key!



IMPORTANT SHOW STUFF!

- If you plan to attend the Club/Dealer Breakfast on Sunday, April 6, please alert Vera Lyman. We will be eating at the Hy-Vee Buffet at 84th and Holdrege. The buffet will be open to us from 7 - 10 a.m. The cost is \$12 per person. Only those persons with prepaid breakfast tickets will be allowed to participate. Please plan to pay Vera at the General Meeting on March 20, so she can give an accurate count to Hy-Vee. Your cooperation and timeliness are greatly appreciated!
- If you plan to display, please let Jayne Beer and Ed Ridge know your needs.
- We still have postcard flyers if you need more to distribute. See Jim Marburger.
- Show setup is Friday, April 4. The doors will open to club members at 8:00 a.m. for setup purposes. There will be some

slight modifications to last year's floor plan, so we need some extra time to work out the kinks. See Ed Dvorak or Charles Wooldridge to offer your assistance with setup. Dealers and demonstrators will be allowed to set up after 10:00 a.m.

- Take your donations for the Nebraska Gem Dig to the General Meeting on March 20, unless you can be at the Event Center at 8:00 a.m. on setup day. We need to "salt" the pile as General Excavating is delivering river rock.
- Please take your Silent Auction donations to the General Meeting on March 20, or the Event Center on setup day.
- Carolyn Ashmore is planning a Junior Rock Raffle at the Show. She is making two Easter baskets full of rocks. Although she is not asking, she will accept any voluntary contributions for the baskets. Please identify each specimen and provide the location found, if known. Tickets will cost \$1 each, and the proceeds go toward Mineral Monkey activities.
- Volunteers for all aspects of the Show are needed; setup, working various areas to give others a break during the show, and tear-down. See Ed Dvorak and Woolly to offer your services.
- Most important of all, everyone have a good time!!

FEBRUARY GENERAL MEETING MINUTES

February 20, 2014 General Meeting, Bethany Park Shelter House
Respectfully submitted by Sharon Marburger

- Meeting called to order at 7:01 p.m. by First Vice President Richard Peterson.
- 22 adult members, 8 Mineral Monkeys
- FRA certificates and badges were presented to Ivy G. Congratulations Ivy!
- Minutes of the January meeting were published in the Pick & Shovel. Jim Marburger moved to accept the minutes as published, second by Karen Messenger. Motion carried.
- The Treasurer's Report was read by Vera Lyman. Motion to approve the report by Carolyn Ashmore, second by Carrie Burkhardt. Motion carried.

OLD BUSINESS

- The February Rock Party will be hosted by Wooly and Jackie on Saturday (22nd).

NEW BUSINESS

- Greg and Betty Syslo purchased and donated 20 lighted loupes for the Mineral Monkeys. A big thank you to the Syslos!
- Geology Day will be on March 9. Show up with your demonstrations, give-away items, and handouts. Fruit and crackers will be provided by the Nature Center. Charlie Messenger will provide shuttle service from the parking lot to the building

so you don't have to carry all your heavy equipment.

- The Science Fair will be March 20. All volunteers are required to go online to complete a volunteer registration form. Go to <https://wapp.lps.org/gold/volunteer/volunteer.cfm>. You will not be allowed entry without registering.

SHOW REPORT

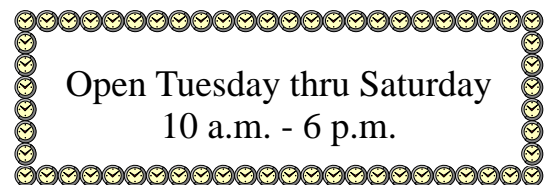
- Advertising: The 4x6 postcards are printed and available for distribution. Billboard will be up March 10.
- There are 12 demonstrators and presenters in place.
- General Excavating is donating rock for the Nebraska Gem Dig again this year. Wooly is accepting donations of Nebraska material to salt the rock pile.
- Carrie Burkhardt has enlisted the help of two strong men to assist with tear down of the show.
- Meeting adjourned to snacks and program at 7:30 p.m. on a motion by Carrie Burkhardt, second by Karen Messenger. Motion carried. The program was a video about mining rubies, emeralds, and sapphires. It was a very good video; it held everyone's attention.

LINCOLN CURIOS ROCK SHOP

6625 Burlington - Lincoln, NE 68507 [Park in alley]
(402) 310-3307

▶ SPECIALIZING IN ARIZONA PETRIFIED WOOD ◀

- ◆ Rough stones and fossils for the hobbyist
- ◆ Polished stone items for interior décor
- ◆ Great selection of tumble-polished stones



FEBRUARY BOARD MEETING MINUTES

February 5, 2014 Board Meeting, Lyman Residence Respectfully submitted by Sharon Marburger

- Meeting called to order at 6:33 p.m. by 1st Vice President Richard Peterson. Board Members present: Richard Peterson, Jayne Beer, Vera Lyman, Charles Wooldridge, Susy McMahan, Carolyn Ashmore, Jim Atkins, and Sharon Marburger. Visitor: Jim Marburger.
- Minutes of the December Board meeting were distributed. Wooly moved to accept the minutes as printed, second by Jim Atkins. Motion carried.
- Minutes of the January Board meeting were distributed. Vera moved to accept the minutes as printed, second by Carolyn. Motion carried.
- The Treasurer's Report was distributed by Vera Lyman. Motion to approve the report by Carolyn, second by Jim A. Motion carried.

OLD BUSINESS

- The MWF Youth Poster Contest is being sponsored by LOESS in Illinois.
- The Mid-Winter Swap was very successful. The Silent Auction netted more than last year's auction.
- The Lapidary Class is in need of replacement equipment. The instructor, Rowdy Cropp, needs to be present at a Board meeting to discuss the type of equipment needed. Vera researched the history of the class and found that past member, John Lewis, donated the first equipment. The club should continue to maintain the equipment. It was suggested that Rowdy be contacted to host an upcoming Rock Party at the class site so members can see the setting. Sharon will contact Rowdy.
- Jayne is preparing to order more T-shirts. The sale of the shirts has been very profitable. Vera moved to have Jayne order more shirts, second by Carolyn. Motion carried.

NEW BUSINESS

- Concern over payment of dues to NAES. The organization appears to have folded, yet we continue to pay dues. Susy moved to find out what is going on with the organization, but subsequently

withdrew the motion when Vera provided a written receipt for dues.

- Susy informed the Board that Younkers is having its sale of coupon booklets. Club members could sell the booklets and then keep a portion of the proceeds. It was determined that it was too short of notice. We will plan for next year.
- Wooly mentioned the Missouri River Expo at Ponca Park, scheduled for September. We were invited to participate last year, but didn't go because there was a change in organizers for the event. Wooly would like to contact them to see if we can participate this year.
- The Science Fair is scheduled for March 20.
- There is concern and outrage that retail outlets of the State Museum and Historical Society are selling dyed Brazilian agate as Nebraska Blue agate. Wooly moved that the President, as representative of LGMC, write a letter to the organizations about the misrepresentation of the rocks sold. Second by Sharon. Motion carried.

SHOW REPORT

- A suggestion for the 2015 Show is to have a Senior discount available to residents of certain retirement facilities.
- Wooly met with the Nebraska Archaeological Society. They would like to display their items in a way that allows their members to sit and answer questions about the displays. The Show Committee is working to alter the floor plan to accommodate this request.
- Billboards go up March 3 (correction: March 10). The locations are 41st and Cornhusker, 5501 Highway 2, 1530 N. 48th, and 3501 Superior.
- Meeting adjourned at 8:23 p.m. on a motion by Wooly, second by Carolyn. Motion carried.

GEOLOGY DAY

by Sharon Marburger

Geology Day was an absolutely gorgeous day with sunshine and record high temperatures. The nice weather brought out everyone who was suffering from Spring Fever. This was reflected by the record number of visitors attending the event. The last I heard, we had over 500 visitors. Karen Messenger exclaimed that she didn't think any of their events at the Nature Center had drawn that many people!

Club members demonstrating and presenting were Charles Wooldridge, Carrie Burkhardt, Ed Dvorak, Jim Marburger, Mark Awakuni-Swetland, Jayne Beer, Corey Beer, Al Stewart, and Ed Ridge. Others in attendance were Sharon Marburger, Carolyn Ashmore, Paul Ashmore, Vera Lyman, Susy McMahan, Charlie Messenger, Karen Messenger, and Mineral Monkeys Jayden and Mia.

There was a lot of interest in the specimens and other freebies being handed out. One person asked for an application to join the club; she was very interested.

After the event closed, a group of members met up at Lee's Chicken for supper. The fun and hobby talk continued for a couple more hours before we parted ways and headed for home. It was a very successful day!



Carrie Burkhardt displayed specimens and had coloring sheets, puzzles and fun information for the kids.



Al Stewart demonstrates cabochon cutting on a flat lap.



Ed Ridge shows a specimen to a visitor.

photos by Jim Marburger



Jim Marburger displayed a vibrasonic rock tumbler and handed out colorful tumbled stones.



Jayne and Corey demonstrated cabochon cutting.



Corey's cabs

J J & L Rocks & Minerals

P.O. Box 68
Hickman, NE 68372

330 Locust
Hickman, NE 68372

Lee Harrison
Eric Harrison
402.792.2337

James Marburger
Sharon Marburger
402.792.2348

jimandjohn@jllrocksandminerals.com
www.jllrocksandminerals.com
jllrocksmin - Ebay Username



Proudly serving
the hobby for
36 years

The
Lincoln Gem and Mineral Club
Proudly Presents



56TH ANNUAL LINCOLN

GEM and MINERAL SHOW

STONES & BONES

Saturday

APRIL 5

9AM - 6PM

Sunday

APRIL 6

10AM - 5PM

Dealers, Demos

Children's Activities,

Educational Programs,

Rough & Uncut Gems,

Agates, Gemstones, Minerals

Fossils, Petrified Wood,

Equipment & Supplies,

Gifts, and Fun!

Adults: \$5

Adult 2-day pass: \$9

Children 11 and under
free with paid adult.

Lancaster Event Center

84th & Havelock, Lincoln, Nebraska



Bring this flyer or a can of food for the Lincoln food Bank to receive \$1 off admission per adult.



<http://www.lincolngemmineralclub.org>

ALAA EXCERPT FROM TOM NOE

CONGRESS TO BEGIN WORK ON RECREATION FEE LEGISLATION VIA WESTERN SLOPE NO- FEE COALITION

Recreation fees for parks and public lands are governed by the Federal Lands Recreation Enhancement Act (FLREA). Very soon, legislation to replace, revise or repeal FLREA is going to move forward in Congress. Now is the time for the public to weigh in.

You can sit back, do nothing, and let the American Recreation Coalition (ARC), the U.S. Forest Service, Bureau of Land Management, and National Park Service set the agenda. Or you can take action and make sure the members of Congress who will decide the issue take the public's concerns into account.

Here is what the ARC has announced it wants to see:

- “Dynamic” pricing, to promote a shift in use to non-peak periods and less-used places. In other words, pay extra for the most popular places at the best times of year.
- Raising the price of senior lifetime passes from \$10 to \$80, and/or raising the eligibility age from 62 to 70.
- Eliminating the free lifetime pass for those with a permanent disability and begin charging \$80 for it.
- Lowering the age of free entry from 16 to 12.

ARC also wants a “prestige pass” at a premium price, for those who want to be able to go to the front of the line, use reserved close-in parking, and generally not have to mix with their fellow citizens of lesser means.

For the ARC, it's all about generating revenue, not about finding ways to encourage more people to enjoy healthy, active, outdoor activities.

If you agree with these proposals, then by all means do nothing.

(More ARC proposals are in the online article, along with help in contacting legislators. Go to www.amlands.org, under “Newsletters.”)



LGMC is a proud member of ALAA

Edited and excerpted from the Oct. to Dec., 2013, ALAA Newsletter

ALAA is the lobbying arm of the American Federation, working on behalf of rockhounds to keep public lands open and accessible to all, including the elderly and handicapped.

WEBELOS FIELD TRIP

by Nancy Akins, Lincoln Curios & LGMC Member

On Saturday, January 11, 2014, Mr. Jody Johnson, Den leader of Webelos Pack 8, brought several boys on a field trip to Lincoln Curios Rock Shop, in order for the boys to earn their Geology badge. Pat & Nancy Akins showed them examples of igneous, sedimentary, and metamorphic rocks and they discussed how each was formed. They looked at many examples of minerals and rocks and learned the definition of a rock and a mineral.

There was a lively discussion of the different uses of rocks and minerals in everyday life.

Just for fun, we looked at different fluorescing rocks, different types of coal as a fossil fuel, naturally magnetic rocks, a number of fossils, including some from Nebraska and even had a taste of a rock (salt). There were lots of great questions from the boys. Mr. Johnson is hoping to bring the rest of the boys on another trip.



Photo courtesy of Nancy Akins.

OUTREACH

by Sharon Marburger

Ed Dvorak and Jim Marburger received requests from a gentleman in Arizona, requesting Nebraska rock specimens for a display he was preparing. His display was to show specimens from each of the 50 United States.

Below is a thank you letter and photos of his display.

Hi Friends,

Yesterday was the last day of the show. Our show cases won the blue ribbon. The cases were voted on by the people who attended the show. The attached pictures were taken before the glass fronts were put on. After they were put on, I attached a sign which indicated that the cases held specimens from all fifty states. Another sign gave the state rock, gem, and mineral for each state. Most importantly, I assembled a list of all you who contributed to this collection. The top of this sign said, "These show cases do not represent the efforts of just one person, but rather the contributions of people literally from all over the United States. This list is intended to recognize those people.

I had so much fun interacting with all of you. This project was the highlight of my rockhounding career. As many of you probably know, there is a huge gem and mineral show each year in February in Tucson, Arizona. I am going to try to have this collection put on exhibit at the main venue. There is no way for me to express my deep gratitude to you for making this dream/project a reality. Needless to say, it would not have happened without you. THANK YOU SO MUCH.



Silversmithing classes

**The Jewelry Connection Ltd.
Indian Village Shopping Ctr.
13th & Arapahoe, Lincoln**

Tuesdays

March 4, 2014

thru

April 22, 2014

7:00 p.m. - 10:00 p.m.

Tuition: \$120 plus \$30 supply deposit

Contact:

Jayne Beer 402-890-3307

Judith Bay 402-423-7058

or e-mail

jbeer60070@aol.com

MINERAL MONKEYS

by Carolyn Ashmore, Junior Co-Leader

With February now behind us, our poster project is ready for display. First, it will go to the Science Fair this month and 16 days later it will appear again at our show. It has been fun looking at all the pictures the juniors picked out and reading the articles they wrote; they brought back a lot of wonderful memories for me as well. You all did a beautiful job and should be very proud. I am, because it was team effort at it's very best. A very special thank you goes out to Linda Guenter for her help putting it all together and making it look so nice.

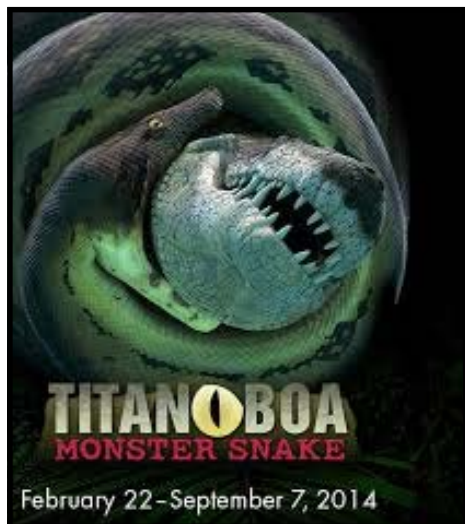
We had a nice surprise at the General Meeting when each of our juniors received a magnifier, or loup. The kids were over the moon with them. We want to say a BIG! BIG! thank you to Greg and Betty Syslo for this wonderful donation, and a BIG! BIG! thank you to Terry Anderson for presenting them to the kids on behalf of the Syslos. They are awesome and the kids will get years of enjoyment out of them.

A few reminders to the juniors of upcoming events:

- Science Fair - Thursday March 20th (4:00 p.m.), Lancaster Event Center, 84th @ Havelock
- Lincoln Gem and Mineral Show, April 5 and 6, (please remember to wear your T-shirts and display your badges)

And finally, with our show having the theme of "Stones and Bones," we thought it would be cool to study about fossils. For the Senior Monkeys who have already studied this and got their fossil badges, never fear!! We are going to get a little more in depth about a few minerals, and then introduce everyone to TITANOBOA, seen in the traveling exhibit at Morrill Hall that runs until September 7, 2014.

ITS GOING TO BE
A BUSY COUPLE
OF MONTHS
FOR US ALL



PUBLIC AGENCIES & OFFICIALS

BLM Washington Office

Principal Deputy Director: Neil Kornze
Acting Deputy Director (Operations): Jamie Connell
1849 C St. NW, Rm. 5665, Washington, DC 20240
Phone: 202-208-3801; Fax: 202-208-5242
E-mail: director@blm.gov

Capitol Hill Switchboard **888.436.8427 or 202.224.3121**

President Barack Obama

1600 Pennsylvania Ave. NW, Washington, DC 20500-0001
Comment line: 202-456-1111
Phone: 202.456.1414; Fax: 202.456.2461
E-mail at website: <http://whitehouse.gov/contact/>

Senator Mike Johanns

100 Centennial Mall North, Room 294, Lincoln, NE 68508-3803
Lincoln phone: 402.476.1400; Fax: 402.476.0605
Washington, DC phone: 202.224.4224; Fax: 202.228.0436
E-mail: mike_johanns@johanns.senate.gov

Senator Deb Fischer

440 N. 8th St., Ste. 120, Lincoln, NE 68508
Lincoln phone: 402.441.4600; Fax: 402.476.8753
Washington, DC phone: 202.224.6551; Fax: 202.228.0012
E-mail at website: <http://fischer.senate.gov/>

Congressman Jeff Fortenberry (1st District)

301 S. 13th St., Ste. 100, Lincoln, NE 68508-2537
Lincoln phone: 402.438.1598
Washington, DC phone: 202.225.4806; Fax: 202.225.5686
E-mail at website: <http://fortenberry.house.gov/>

Congressman Lee Terry (2nd District)

11717 Burt St., Ste. 106, Omaha, NE 68154
Omaha phone: 402.397.9944
Washington, DC phone: 202.225.4155; Fax: 202.226.5452
E-mail at website: <http://leeterry.house.gov/>

Congressman Adrian Smith (3rd District)

416 Valley View Dr., Ste. 600, Scottsbluff, NE 69361
Scottsbluff phone: 308.632.3333; Fax: 308.635.3049
Washington, DC phone: 202.225.6435; Fax: 202.225.0207
E-mail at website: <http://adriansmith.house.gov/>

State Capitol Switchboard **402.471.2311**

Governor Dave Heineman

Capitol Bldg., P.O. Box 94848, Lincoln, NE 68509-4848
Phone: 402.471.2244; Fax: 402.471.6031
E-mail: dave.heineman@nebraska.gov

For more Nebraska Government Officials:
<http://nebraskaccess.ne.gov/electedofficials.asp>

Lincoln Journal Star

Letters to the editor: 926 P St., Lincoln, NE 68508
E-mail: oped@journalstar.com

FEBRUARY ROCK PARTY

by Sharon Marburger

The Rock Party was hosted by Wooly and Jackie at their home in Lincoln on February 22. The group included Vera Lyman and Ellie; Brian, Jayne, and Corey Beer; Nancy Akins; Carrie Burkhardt; Mark Awakuni-Swetland; Ed Ridge; Richard Peterson; Susy McMahan, Carolyn Ashmore, and Jim and Sharon Marburger.

There was a lively discussion of Show plans; good food to eat; Pete, Mark, and Brian checked out the club library; and Jackie worked on a project. Wooly had a “mystery rock” he had everyone take a stab at identifying. About half of those present correctly identified the specimen as halite. It was fun to watch the faces of those trying to figure out what it was.

As always, we had a great time talking rocks, and sharing in our love of the hobby.

Due to the upcoming show and Geology Day, there will not be a March Rock Party. So sad.



Susy M. and Pete discuss some specimens.



Pete watches Jackie work on her project.



Ellie shows Nancy her electronic gadget and a few of the things she can do with it.



Mark checks out the show ad in a local publication.



photos by Jim Marburger

Carrie B. and Ed R. share in “show” talk.



Pete and Brian check out some reading material from the club library.

STANDING COMMITTEES CHAIRMEN

Audit	Ed Dvorak James Marburger Roger Pittard
Christmas Party	Edward Ridge
Education / Librarian	Charles Wooldridge Judy (Leick-Cropp) Anson
Facebook	Andrew Tiedje
Field Trips	James Marburger
Geology Day Coordinator	Jayne Beer
Grinding Party	Jayne Beer
Historian	Sharon Marburger
Legislative Liaison	Susy McMahan
Membership Record	Edward Ridge
MWF Liaison	Vera Lyman
Programs	Jayne Beer/Judy Anson
Property	James Marburger
Refreshments / Door Prizes	Mary Pittard
Scholarship	Vera Lyman
Show—2014	Charles Wooldridge
Swap—2015	
Website	Jim Atkins
Youth Activities	Carolyn Ashmore Susy McMahan

LONG RANGE PLANNING & BY-LAWS COMMITTEE

Jim Marburger, Chairman

1 year:	Charles Wooldridge Sharon Marburger
2 years:	Vera Lyman Ed Dvorak
3 years:	Edward Ridge Robert Cropp

NOMINATING COMMITTEE

Jim Marburger, Chairman

1 year:	Brad Nielsen Roger Pittard
2 years:	Vera Lyman Edward Ridge
3 years:	Robert Gritmit Sharon Marburger

ADVERTISING, SUBSCRIPTION, AND MEMBERSHIP INFORMATION

Advertising by rock / hobby business or interest is permitted with the approval of the Board of Directors. Contact the Editor with your proposed ad. The rate is set at \$20.00 per full page; \$10.00 per 1/2 page; \$5.00 per 1/4 page (minimum) per issue, paid in advance to the Club treasurer. Ads will be placed throughout the newsletter as space permits.

Subscription to the Pick & Shovel is \$15.00 per year for mailed copy.

Membership dues for the Lincoln Gem & Mineral Club are as follows:

- Adults (age 16 and over) - \$15 per year or \$25 per couple (within the same household)
- Juniors - \$2 per year (with a responsible adult)

All new memberships must be accompanied by a written application. Prospective members must gain Board approval and attend one regular meeting before being approved for membership.

2014 SHOW COMMITTEE

Chairman:	Charles Wooldridge
Breakfast:	Vera Lyman
Dealers:	Charles Wooldridge
Demonstrators:	Carrie Burkhardt
Displays:	Jayne Beer, Ed Ridge
Event Center Liaison:	Vera Lyman
Finance & Ticket Sales:	Vera Lyman
Floor Chairman:	Ed Dvorak
Forms:	Sharon Marburger
LGMC Club Booth:	Robert Gritmit
Nebraska Gem Dig:	Rowdy Cropp
Plants:	Ed Ridge
Printed Program:	Sharon Marburger
Programs & Speakers:	Jim Null
Publicity & Promotion:	Jim Marburger
Ribbons & Recognitions:	Sharon Marburger
Security:	Vera Lyman
Show Flyer:	Jim Atkins
Silent Auction:	Jackie Barnhardt Judy (Leick-Cropp) Anson, Andrew Tiedje
Special Features:	Mark Awakuni-Swetland
Web Master:	Jim Atkins
Youth Activities:	Carolyn Ashmore Susy McMahan



Mail Exchange Newsletters to:
 Lincoln Gem & Mineral Club, Inc.
 P.O. Box 5342
 Lincoln, NE 68505-0342
 Or e-mail newsletters to:
 lgmc.editor@windstream.net

PICK & SHOVEL

THE *PICK & SHOVEL* IS THE OFFICIAL PUBLICATION OF THE LINCOLN GEM & MINERAL CLUB, INC., LINCOLN, NEBRASKA. **ARTICLES AND ITEMS APPEARING WITHIN MAY BE REPRODUCED IN OTHER CLUB BULLETINS, PROVIDED PROPER CREDIT IS GIVEN TO THE *PICK & SHOVEL* AND THE AUTHOR, AND THAT A REPRINT OF THE ARTICLE IS SENT TO THE EDITOR OF THE *PICK & SHOVEL*.**

YOUR PICK & SHOVEL STAFF:

PUBLISHER: LINCOLN GEM & MINERAL CLUB, INC.,
 P.O. BOX 5342, LINCOLN, NEBRASKA
 68505-0342

EDITOR: SHARON MARBURGER, P.O. BOX 64,
 HICKMAN, NEBRASKA 68372, E-MAIL:
 LGMC.EDITOR@WINDSTREAM.NET

CIRCULATION: VERA LYMAN, 402-464-6089

REPORTERS: ALL MEMBERS ARE ENCOURAGED TO
 SUBMIT FEATURES, ARTICLES, POETRY,
 OR DRAWINGS.

LGMC is a member of:

