



PICK & SHOVEL

P.O. Box 5342, Lincoln, Nebraska 68505-0342, www.lincolngemmineralclub.org

The purpose of this corporation shall be to study, promote an interest in, and disseminate knowledge of lapidary and various Earth Sciences including but not necessarily limited to Geology, Paleontology and Mineralogy. It shall be a particular purpose of the corporation to provide education in these fields to its members and the general public, especially to youth and student groups.

UPCOMING EVENTS

2013 Meeting Dates

Board

*Meetings held at
Gere Library*

Wed., September 4

Wed., October 2

Wed., November 6

General

Thurs., September 19

Thurs., October 17

Thurs., November 21

Sunday, December 1
(Christmas Party)

Regular monthly meetings are held at 7:00 p.m. at the Bethany Park Shelter House. Youth activities begin at 6:30 p.m. Summer activities will be announced as they are planned.

General Meeting

Thursday,
September 19, 2013
7:00 p.m.
Program: TBA

Mineral Monkeys

Thursday,
September 19, 2013
6:30 p.m.
Lesson: TBA

The Loup Valley Gem and Mineral Society

INVITE DEALERS AND PUBLIC TO THE

**1ST EVER NEBRASKA STATE
ROCKS MINERALS AGATES GEMSTONES
INDIAN ARTIFACTS AND JEWELRY
SWAP**

JULY 20-21, 2013
SATURDAY 9 AM – 6 PM
SUNDAY 10 AM - 5 PM

BUY - SELL - TRADE
FOSSILS, MINERALS, AGATES, ARTIFACTS,
FACETED GEMSTONES AND JEWELRY

SILENT AUCTION

Izaak Walton Camp Grounds
South of Columbus, Nebraska
1/10th mile West of Hwy 81 and Hwy 30 intersection
Enter from Hwy 30
Follow Rock Swap signs

FREE ADMISSION

*Swap Chairman
Mary Wemhoff
Home # 402-246-3955
Cell # 402-563-4765
wemconst@frontiernet.net*

Grinding Party

Pioneers Park Nature Center

Chet Ager Building

Sunday, July 14, 2013

1:00 p.m. to 4:00 p.m.

Potluck picnic in the
park will follow!



July Birthdays:

Charlie Messenger

Susy McMahan

Sharon Marburger



BOARD OF DIRECTORS

President

James Marburger, 402.792.2348
jm24122@windstream.net

1st Vice-President

Ed Dvorak, 402.946.3041
ed20649@windstream.net

2nd Vice-President

Aulden Stewart, 402.483.1044
mmstewart@inebraska.com

Treasurer

Vera Lyman, 402.464.6089

Secretary

Mark Awakuni-Swetland, 402.770.3521
mawakuni-swetland2@unl.edu

Board Member

Jayne Beer, 402.890.3307
JBeer60070@aol.com

Board Member

Robert Cropp, 402.465.8432
rowdyrcr@hotmail.com

Board Member

Richard Peterson, 402.489.2996
padr20@yahoo.com

Board Member

Charles Wooldridge, 402.416.3233
charles.wooldridge@nebraska.gov

PRESIDENT'S MESSAGE

by James Marburger, President

June was a very nice month and I want to thank the Pittards for a great time at the rock party. I took a genie and there was a interest in the unit and what we found on the South Dakota field trip. The weather was near perfect for a party. No work was done on the trailer. A great job of packing after the April show helped.



Thanks to all of the presenters who worked with the Beatrice Library, Lincoln Gere Library, and the Wilderness Day Camp. Our hobby was shown to a lot of rocky eyed young people and adults who expressed interest in coming to the next club event.

Speaking of the next event, that would be the July 14th Grinding Party at the Pioneer Park Nature Center, Chet Ager Building, from 1:00-4:00. With the great weather and exposure from the June presentations, a good turn out is expected. Please plan to attend; bring a display, demonstrate, or help. Afterwards, we will have a party of our own with a picnic in the park. We will count this as our July Rock Party. As in the past, I am sure we will have a great time.

Plan to attend the Swap in Columbus on July 20 and 21. See flyer on page 1. Maybe a small field trip can be had with the Columbus club?

On July 13, there will be an auction in Fremont, Nebraska at the Martindale Auction Building, 1305 S. Main. This rock collection belonged to Professor Herman Gimmetstad of Fremont, who died in the early 1970s. The collection contains some nice material. It is not a large collection, but there are some great individual items for cutting and tumbling. There are very few minerals, about 30 pounds of geodes from Mexico, some Southwest U.S. materials, and other items from around the world. The auction is for the entire estate, so you may want to call ahead to find out approximately what time the rocks will be auctioned. See page 5 for more information.

Please contact Richard Peterson, Chairman of the Nominating Committee, to let him know you are willing to serve as a committee chairman, Board member, or officer. He will be looking for willing and able volunteers to add to the slate for the upcoming election. The club is very active and we need idea-people to help direct the club.

PHYLLIS N. PARKS

Phyllis N. Parks, age 93, died on Saturday, June 15, 2013 at her Tabitha home in Lincoln, Nebraska. She was born June 10, 1920 in Aurora, Nebraska, and graduated from Aurora High School. She was a nurse assistant at Tabitha from 1949 to 1952, worked at the Lincoln Journal Star for 12 years during the 1950s and 60s, and then as a bookkeeper at Hurlburt's Cycle Shop. Phyllis was very active in LGMC, holding the offices of President, Secretary, and Treasurer; chairing many committees, including Pick & Shovel editor; and was a Life Member. She, and her vast knowledge of LGMC's history, will be missed.

FLORENCE LUENINGHOENER

This editor recently discovered the death of another of LGMC's Life Members. Florence Marie Lueninghoener passed away 15 months ago, on March 25, 2012, at the age of 95, in Fremont, Nebraska. She was born June 1, 1916, in Avard, Oklahoma. She received her master's degree from the University of Nebraska at Lincoln and taught in the Lincoln Public Schools for 20 years.

Florence classified rocks for Midland Lutheran College (now Midlands University) and gave lectures on moon rocks which had to be checked out from NASA. In addition to being an LGMC member, Florence attained a pilot's license, earning a rating of Airman Mission Third Class, and was the Aerospace Education and Training Officer with the rank of major. She was married to Dr. Gilbert Lueninghoener.

COMMUNITY OUTREACH

by Jim Marburger

June 20, 2013

Wilderness Park

Lincoln, Nebraska

Presenters: Karen Messenger, J.A. Marburger

On June 20, from 10 a.m. to 12 noon, Karen Messenger and I did a presentation at the Day Camp in Wilderness Park. Karen "Rocky," me "Rocky TWO," and other camp counselors had four tables set up so the 40 kids could take turns going through the displays. Rocky had presented fossils and a field trip to Weeping Water for fossils earlier in the week, so my presentation wrapped up the lesson on rock collecting and polishing.

One table had polished and rough petrified wood specimens to look at, and each camper received one rough sample. The second table had the State Rock, the Prairie Agate, on display. Each camper also received one of these specimens. The third table had a vibro tumbler running and the campers could pick a tumble-polished agate that caught their eye. The fourth table had books and fossils, along with a Genie rock polisher ready to polish each camper's specimen selected from the first two tables.

I answered questions on how to polish the stones and how to remove the scratches to get to the polished end. The sun was high but the wind was blowing a nice breeze up to the last 15 minutes. Then the wind stopped, humidity went to near 100%, the temperature was 85 degrees, and the flies and mosquitoes roared out with blood on their minds. But, Karen and I were able to finish up so the kids could have lunch. Handouts on rock collecting and minerals were distributed, along with the club's information sheets.

It is a lot of fun to see the eyes light up when new and exciting things happen, like picking up rocks and

seeing them polished. Perhaps the excitement of this new hobby experience will remain with some of them.

by Jim Marburger

June 18, 2013

Gere Library

Lincoln, Nebraska

Presenter: J.A. Marburger, President LGMC, Inc.

On June 18 at 1:50 p.m., the room at Gere Library was setup and items for the presentation were spread out on the table - prairie agates, petrified wood, Lake Superior agates, a mastodon tooth, a small old calf skull, books, and some chalcedony. But where was everybody? Sweat time. At 2 p.m., the door opened up and in came about 20 young people with a few adults. Here we go!

After introductions and short explanation of why I was a "rockhound," we got down to passing items around and answering questions. All eyes were focused on the material presented for the "Beneath the Surface" teen summer reading program. My program was "Rocks that can be found in Nebraska." I gave them the scoop on what they might find in their back yards. A slide presentation on field trips to the Oglala National Grass Lands and Jet, Oklahoma Salt Plains captivated them.

The hour was flying by and I thought I had them hooked. But then came the final act. The overhead lights were dimmed and the black light shined on chalcedony and few other items. Bright greens, reds, oranges and blues. WOWOW!

Hand out information sheets on the club were given out, along with a few applications. Maybe we will get a few more Monkeys this fall.

LINCOLN CURIOS ROCK SHOP

6625 Burlington - Lincoln, NE 68507 [Park in alley]

(402) 310-3307

▶ SPECIALIZING IN ARIZONA PETRIFIED WOOD ◀

- ◆ Rough stones and fossils for the hobbyist
- ◆ Polished stone items for interior décor
- ◆ Great selection of tumble-polished stones

Open Tuesday thru Saturday
10 a.m. - 6 p.m.

COMMUNITY OUTREACH - CONT'D

by Charles "Wooly" Wooldridge

June 18, 2013

Beatrice Library

Beatrice, Nebraska

Presenters: Wooly, Corey Beer

June 18, 2013 Corey Beer and I gave a talk to two groups of "rockhounds" in Beatrice, as part of the Beatrice Library Summer Series. We brought hands-on displays of artifacts, fossils, petrified woods, and, of course, agates we had collected in southeast Nebraska. I showed some pictures of collecting sites and Corey brought along lapidary equipment to show them what can be done with our "treasures" after we collect them. The two o'clock presentation was attended by over 90 elementary school age children. They were really excited and had many good questions to ask each of us. The kids were very polite and we were able to let each of them touch and observe close up all of the display items. They were especially amazed at what Corey was able to do with his cabbing machine.

Three o'clock found Corey and me with a couple of hours of free time so, of course, we headed out to look for some rocks. We searched a few minimum maintenance roads near Holmesville. One road cut through Dakota Sandstone was where we found some "Indian Paint Pot" material, but we were unable to find anything real exciting. We headed back to Beatrice to a pharmacy near the library where we had spotted some river gravel in the parking lot landscape. In the gravel we found lots of nice petrified wood, honey agates and cherts. Just as we were leaving Corey was handing me a rock he found when he dropped it. It landed on ... you guessed it ... a LAKER! And it was a nice one, at that. He has to be one of the luckiest rockhounds I know!

After a wonderful dinner at The Black Crow restaurant, we returned to the library to do our presentation again, this time to a couple dozen adults. There were many questions and sharing of experiences. They were all impressed with Corey's beautiful LAKER found just six blocks away. I enjoyed talking with some "old timers" about the former Beatrice rock club and the swaps that were held in Chautauqua Park. I recognized Lloyd Pretzer and his son Mark. Lloyd has prospected, dug, and cut many dazzling Idaho Star Garnets from the Fernwood area in northern Idaho. I displayed some of his star garnets at one of our gem shows 20-25 years ago. I was excited when Mr. Pretzer expressed a willingness to display them again. While I talked about the "old times," the folks who were new to the hobby gathered around Corey and, once again, were amazed and delighted with the results of his lapidary endeavors.

by Corey Beer

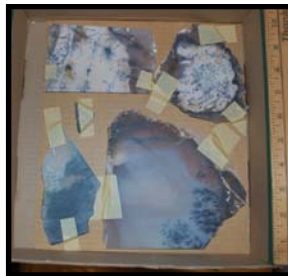
Wooly came to my house at about noon to pick me up. I had packed my rocks and my Genie rock polishing machine. We loaded them into the back of his Subaru and we headed off to Beatrice. We got there about 1:00 p.m. and as we were driving to the library, we had our eyes on the lookout for good landscape rock so we could tell the first group of kids about places where they could look for rocks. When we got to the library, we met the librarian who let us into the room where we set up my equipment and the specimens that we brought. At about 2:00 p.m., the kids got there. It was kind of overwhelming when 90 kids showed up.

Wooly started showing a slide show that he had created for a different presentation, and he showed pictures of agates in the ground in their natural place so that kids could begin to see the difference between agate and ordinary rocks. Once we finished, we had the kids come up in rows of two. When they came up, Wooly explained what the specimens were. While he did that, I worked on cutting a stone on my Genie so that they could see how stones were cut. This was pretty hectic but, overall, the kids were interested in what we were talking about. Once they left, we had about 2 hours until dinner.

We couldn't wait to go look for rocks in the area. First we drove out into the country to look for sandstone paint pots; we looked for a while, but didn't find too much. We decided to go look in town. We stopped at the pharmacy and looked until we had to leave. As we were showing each other our finds, I dropped a rock and I bent over to pick it up. Right under the one that I dropped was my favorite type of agate. A LAKER!

We left and went to The Black Crow, which was a really fancy restaurant in town. I ordered the Buffalo stew which was delicious! Once we finished eating, we drove back to the library and started our adult presentation at 7:00 p.m. It went basically the same as the first time until the time when they came up; this group had many more questions than the first group. I liked this a little bit more because I could talk more technical than I could with the first group. This program lasted about a half hour longer than the first one, because they stayed around and talked for a while. At about 8:30 p.m. we started to pack up and we got home about 10:00 p.m. I really enjoyed this experience and would love to do it again.

Estate Auction of Professor Herman & Wilma Gimmestad
 Saturday, July 13, 9:30 a.m.
 Martindale Auction Building
 1305 S. Main St., Fremont, Nebraska
 402.721.8500



This is a small representation of what is available. This collection has been packed away since the early 1970s. There are some very nice specimens. Some cutting material, lots of tumbling material, and some that is just pretty to look at.

Paid Advertisement

Rock-N-Wrap Jewelry

Betty Selby-Syslo, Certified Artisan

Learn to make jewelry using minerals, rocks, beads & cabochons wrapped in sterling, gold filled or copper wire!

Now at 2 locations!

8705 S 36th St.
 Bellevue, NE 68147
 402.677.9289
 syslo@msn.com

The Jewelry Connection
 13th & Arapahoe, Lincoln, NE
 402.677.9289
 syslo@msn.com

Contact Betty for class information.



JUNE ROCK PARTY

by Sharon Marburger

Saturday, June 15 started out with rain and thundershowers, at least in Hickman, Nebraska. By the time Jim and I started out for the Pittards' home in Geneva, the windshield wipers on the car could barely keep up with the rainfall. As we drove west, the rain became lighter and the clouds started breaking up. When we reached Geneva, the day was gorgeous!

Roger and Mary had tables and chairs set up under the trees on their south yard. There was a very nice breeze blowing, keeping the bugs at bay and the temperature down. We sat around and talked rocks while Jim set up the Genie grinder/polisher. Jim and I took about 15 pounds of rock collected during the Kadoka field trip to show the others, and to work on. I polished ends on a couple of pieces, then Jim took over and polished several more specimens. Carolyn Ashmore asked Jim a bunch of questions about the Genie, so he offered her a specimen to work. I believe she fell in love with the Genie.



Mark Awakuni-Swetland also did some grinding and polishing with the Genie, however, I did not capture it with my camera.



Roger started up the campfire around 4 p.m. and a few of us roasted wieners and marshmallows. Roger

helped out the not-so-adventurous folks by cooking most of the hot dogs on the grill. With the hot dogs, there were four kinds of potato salad, pasta salad, fruit salad, watermelon, chips, and a variety of desserts. As usual, we ate very well!

I think we counted 15 participants at this rock party. You don't know what you are missing by not being a part of the fun! Join us next time!



Ed Ridge and Richard Peterson just hanging out



It takes this saw a long time to cut a slab



Now that's a log!

Photos by Sharon Marburger



Ed & Donna Anderson, Carolyn & Paul Ashmore



Mark seems to be very good at putting his back to me



Roger does a good job, too! Our hosts, Roger and Mary, with the Andersons in the background



Even with a broken leg, Ed Dvorak made it to the party. Thanks to Pat Dvorak for driving him! I did not catch the names of the other two people in this photo

MINERAL MONKEYS

Hi Monkeys!



My Trip To South Dakota

by Jayden Eno

I had a fun time in South Dakota, with my new friends, Ian, Ivy, and Corey. I found a lot of cool rocks. But honestly, the best part was going to Mt. Rushmore and Crazy Horse; I've never been there before. We went to Wall Drug with Ivy, Linda, and Scott, and my grandma and Paul were so fun. Ivy and I went and played at an arcade.

After we went back to the motel, it started to rain. I played in it awhile, then it stopped so I went inside to get a bucket filled with hot water. I thought it would feel nice, but it kinda hurt, and it felt kinda good at the same time.

After all that, my grandma told me to come in and take a warm shower. It was a wonderful weekend. I Loved It.



Corey, Ian, and Bobby climbing the walls at the Rose Creek Quarry.

photos by Sharon Marburger



photo by Philip Paul Ashmore



Ian and Jayden stop to examine a fuzzy caterpillar found while hunting for fossils west of Fairbury

ALAA NEWS

Recently, the ALAA newsletter was sent to those members having e-mail. Please read that newsletter and feel the compulsion to write your legislator. After writing the letter, please send a copy to Sharon Marburger, for inclusion in the All American Club Yearbook. When the legislator responds to your letter, please also send a copy of that to Sharon.

If you don't have e-mail and would like a copy of the ALAA newsletter, contact Vera Lyman or Sharon Marburger for a copy to be mailed to you.

LGMC is a proud member of ALAA



FAIRBURY FIELD TRIP

by Sharon Marburger

Saturday, June 29 was the perfect day for a field trip. A beautiful blue sky with a few white puffy clouds, very low humidity, and a stiff breeze to keep the bugs away and provide heat relief.

Those meeting at the Fairbury McDonalds were Brian, Jayne, & Corey Beer; Susy McMahan; Ian Williams and his dad, Bobby; Philip Paul & Carolyn Ashmore; Jayden Eno; Ed Ridge; Andrew Tiedje; Charles "Wooly" Wooldridge & Jackie Barnhardt; Mark Awakuni-Swetland; and Jim & Sharon Marburger. Later, North Central Kansas Club member, John Eppich, joined us for a portion of the trip.



photo by Jayne Beer

We visited the same locations as those the Midwest Federation collected during the 2013 Show field trip. Collecting this time was a little more difficult due to the differences in seasons; April had very little vegetation while wet May and June produced lush grasses and flowers. However, lots of specimens were found and carried home.

by Carolyn Ashmore

MY AMAZING AND MEMORABLE TRIP TO FAIRBURY

The excitement of yet another Field trip, this time to Fairbury, Nebraska, was nothing like the trip we had last month to South Dakota. This time, instead of Fairburns, it was fossils. I was totally amazed at how plentiful and beautiful the fossil beds were and how easily accessible they were to get to. We went to several different sites on this trip and I managed to get something from every place we went.

When I wasn't bugging Susy, Mark, Wooly, or Jim with questions about this or that, I kept busy looking and asking questions about other people's finds. With so many knowledgeable people in this club, it's easy for this newbie to find answers almost anywhere.

So when I found this unusual looking rock, I had no idea what I was looking at; it was black, and it looked like a tooth or a claw of some sort. I went looking for someone who could tell me what it was. Mark told me to find Wooly because he would know. Before I could show him, he asked if I found something. I opened my hand and showed him my find. He told me I had a great

(Continued on page 9)

J J & L Rocks & Minerals

P.O. Box 68
Hickman, NE 68372

330 Locust
Hickman, NE 68372

John Harrison
Lee Harrison
402.792.2337

James Marburger
Sharon Marburger
402.792.2348

jimandjohn@jllrocksandminerals.com
www.jllrocksandminerals.com
jllrocksmin - Ebay Username



Proudly serving
the hobby for
36 years

FAIRBURY TRIP - CONT'D

(Continued from page 8)

find, that I had found a Mosasaur tooth! He continued, telling me Mosasaurs lived in the sea during the late Cretaceous period, prior to the dinosaurs. I soon felt the adrenaline rush you get when you know you found something special! My mind raced, bombarding Wooly, and now Jim, with more questions. They gave enough answers that I could now learn more about this on my own and I couldn't wait 'til I could get back to the Motel and my computer, hoping to find out even more about this marine reptile that lived so many millions of years ago. I found a mountain of information on the subject. I'm including a picture of this most dangerous of marine life. After reading about mosasaurs, I think we are fortunate they do not exist today.



Mosasaur tooth, slightly over 1 inch long



To sum this up, it was a wonderful field trip that included nice weather, lots of great finds, and a meal with good friends.



Philip Paul Ashmore with fossil clams



John Eppich with fossil worm tracks



Mark Awakuni-Swetland's super piece of selenite



Summer Break

Next class begins

Silversmithing classes

**The Jewelry Connection Ltd.
Indian Village Shopping Ctr.
13th & Arapahoe, Lincoln**

Tuesdays

August 13, 2013

thru

October 1, 2013

7:00 p.m. - 10:00 p.m.

Tuition: \$120 plus \$30 supply deposit

Contact:

Jayne Beer 402-890-3307

Judith Bay 402-423-7058

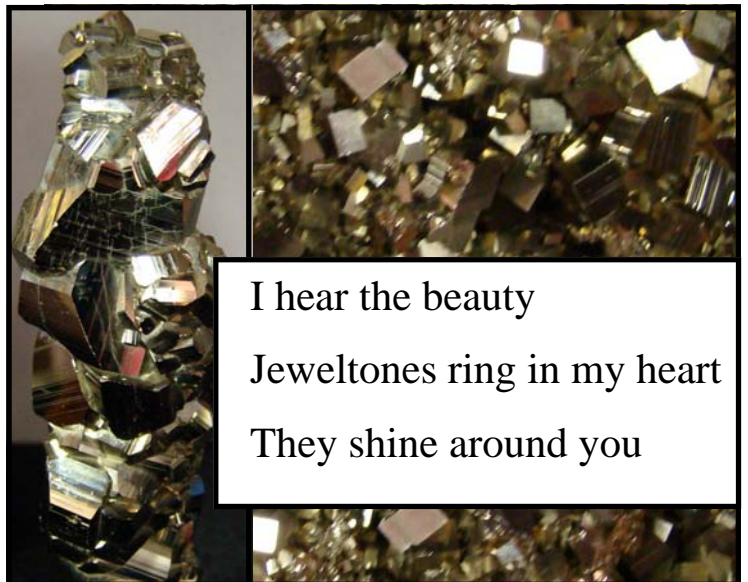
or e-mail

jbeer60070@aol.com

HAIKU

Written by Jacqueline Barnhardt

Photo by Sharon Marburger



I hear the beauty
Jeweltones ring in my heart
They shine around you

Take a field trip around the world and go no further than Hickman, Nebraska!

J.J. & L. Rocks & Minerals is reducing its inventory. Rough material from trim saw size to yard boulders available. Visit the Rock Yard Sale from 9:00 a.m. to 6:00 p.m. on August 3 & 4, 2013 and August 10 & 11, 2013. Reasonable offers accepted on designated materials. Other items and materials available upon request.



J.J.&L. Rocks & Minerals
330 Locust
402.792.2337

Paid Advertisement

STANDING COMMITTEES CHAIRMEN

| | |
|----------------------------|-----------------------|
| Audit | Ed Dvorak |
| | James Marburger |
| | Roger Pittard |
| Christmas Party | Edward Ridge |
| Education / Librarian | Charles Wooldridge |
| | Judy Leick-Cropp |
| Facebook | Andrew Tiedje |
| Field Trips | James Marburger |
| Geology Day Coordinator | Aulden Stewart |
| Grinding Party | Aulden Stewart |
| Historian | Sharon Marburger |
| Legislative Liaison | Robert Cropp |
| Membership Record | Edward Ridge |
| MWF Liaison | Vera Lyman |
| Programs | Jayne Beer/Judy Cropp |
| Property | James Marburger |
| Refreshments / Door Prizes | Mary Pittard |
| Scholarship | Vera Lyman |
| Show—2014 | Charles Wooldridge |
| Swap—2014 | Richard Peterson |
| Website | Jim Atkins |
| Youth Activities | Andrew Tiedje |
| | Susy McMahan |
| | Kay Jurgens |

ADVERTISING, SUBSCRIPTION, AND MEMBERSHIP INFORMATION

Advertising by rock / hobby business or interest is permitted with the approval of the Board of Directors. Contact the Editor with your proposed ad. The rate is set at \$20.00 per full page; \$10.00 per 1/2 page; \$5.00 per 1/4 page (minimum) per issue, paid in advance to the Club treasurer. Ads will be placed throughout the newsletter as space permits.

Subscription to the Pick & Shovel is \$15.00 per year for mailed copy.

Membership dues for the Lincoln Gem & Mineral Club are as follows:

Adults (age 16 and over) - \$15 per year or \$25 per couple (within the same household)

Juniors - \$2 per year (with a responsible adult)

All new memberships must be accompanied by a written application. Prospective members must gain Board approval and attend one regular meeting before being approved for membership.

LONG RANGE PLANNING & BY-LAWS COMMITTEE

| | |
|----------|--|
| | Richard Peterson, Chairman |
| 1 year: | Charles Wooldridge Sharon Marburger |
| 2 years: | Vera Lyman Ed Dvorak |
| 3 years: | Edward Ridge Robert Cropp |

NOMINATING COMMITTEE

| | |
|----------|----------------------------------|
| | Richard Peterson, Chairman |
| 1 year: | Robert Cropp Judy Leick-Cropp |
| 2 years: | Brad Nielsen Roger Pittard |
| 3 years: | Vera Lyman Edward Ridge |



Road Cuts

2014 SHOW COMMITTEE

- Chairman:.....Charles Wooldridge
- Breakfast:
- Dealers:
- Demonstrators:
- Displays:
- Event Center Liaison..... Vera Lyman
- Finance & Ticket Sales: Vera Lyman
- Floor Chairman:
- FormsSharon Marburger
- LGMC Club Booth:
- Plants:..... Ed Ridge
- Printed Program:Sharon Marburger
- Programs & Speakers:.....
- Publicity & Promotion: Jim Marburger
- Ribbons & Recognitions:
- Security: Vera Lyman
- Silent Auction:
- Special Features:
- Web Master:.....Jim Atkins
- Youth Activities:

Or e-mail newsletters to:
lgmc.editor@windstream.net

Lincoln, NE 68505-0342
P.O. Box 5342

Lincoln Gem & Mineral Club, Inc.

Mail Exchange Newsletters to:



PICK & SHOVEL

THE *PICK & SHOVEL* IS THE OFFICIAL PUBLICATION OF THE LINCOLN GEM & MINERAL CLUB, INC., LINCOLN, NEBRASKA. **ARTICLES AND ITEMS APPEARING WITHIN MAY BE REPRODUCED IN OTHER CLUB BULLETINS, PROVIDED PROPER CREDIT IS GIVEN TO THE *PICK & SHOVEL* AND THE AUTHOR, AND THAT A REPRINT OF THE ARTICLE IS SENT TO THE EDITOR OF THE *PICK & SHOVEL*.**

YOUR PICK & SHOVEL STAFF:

PUBLISHER: LINCOLN GEM & MINERAL CLUB,
INC., P.O. BOX 5342, LINCOLN,
NEBRASKA 68505-0342

EDITOR: SHARON MARBURGER, P.O. BOX 64,
HICKMAN, NEBRASKA 68372, E-MAIL:
LGMC.EDITOR@WINDSTREAM.NET

CIRCULATION: VERA LYMAN, 402-464-6089

REPORTERS: ALL MEMBERS ARE ENCOURAGED TO
SUBMIT FEATURES, ARTICLES,
POETRY, OR DRAWINGS.

LGMC is a member of:

