



# PICK & SHOVEL

P.O. Box 5342, Lincoln, Nebraska 68505-0342, [www.lincolngemmineralclub.org](http://www.lincolngemmineralclub.org)

The purpose of this corporation shall be to study, promote an interest in, and disseminate knowledge of lapidary and various Earth Sciences including but not necessarily limited to Geology, Paleontology and Mineralogy. It shall be a particular purpose of the corporation to provide education in these fields to its members and the general public, especially to youth and student groups.

## UPCOMING EVENTS

### 2013 Meeting Dates

#### Board

*Meetings held at  
Gere Library*

Wed., September 4

Wed., October 2

Wed., November 6

#### General

Thurs., September 19

Thurs., October 17

Thurs., November 21

Sunday, December 1  
(Christmas Party)

Regular monthly meetings are held at 7:00 p.m. at the Bethany Park Shelter House. Youth activities begin at 6:30 p.m. Summer activities will be announced as they are

#### General Meeting

Thursday, September 19, 2013

7:00 p.m.

Program: TBA

#### Mineral Monkeys

Thursday, September 19, 2013

6:30 p.m.

Lesson: TBA

## June



## Rock Party



## at The Pittards' Saturday, June 15, 2013

### See page 3 for details.

See

**President's Message**  
on page 2 for  
field trip details.

# FIELD TRIP, JUNE 29 FAIRBURY, NEBRASKA

### REGIONAL SHOWS

**Jun 14-16: PARK HILLS, MO.** Mineral Area Gem & Mineral Society's Missouri Mines Rock Swap; Missouri Mines State Historic Site, 50000 State Hwy. 32; Fri. 9-6, Sat. 9-6, Sun. 9-4; Contact: Boneta Hensley, 573.760.0488, [mojellybean63@yahoo.com](mailto:mojellybean63@yahoo.com).

**Jun 22-23: ELDON, MO.** Osage Rock & Mineral Club's Annual Show; Eldon Community Center, 309 E. 2nd St.; Sat. & Sun. 11-5; Contact: Recorded Info 417-532-4367, [ormc2013\\_show@centurylink.net](mailto:ormc2013_show@centurylink.net).

## BOARD OF DIRECTORS

### President

James Marburger, 402.792.2348  
jm24122@windstream.net

### 1<sup>st</sup> Vice-President

Ed Dvorak, 402.946.3041  
ed20649@windstream.net

### 2<sup>nd</sup> Vice-President

Aulden Stewart, 402.483.1044  
mmstewart@inebraska.com

### Treasurer

Vera Lyman, 402.464.6089

### Secretary

Mark Awakuni-Swetland, 402.770.3521  
mawakuni-swetland2@unl.edu

### Board Member

Jayne Beer, 402.890.3307  
JBeer60070@aol.com

### Board Member

Robert Cropp, 402.465.8432  
rowdycr@hotmail.com

### Board Member

Richard Peterson, 402.489.2996  
padr20@yahoo.com

### Board Member

Charles Wooldridge, 402.416.3233  
charles.wooldridge@nebraska.gov

## PRESIDENT'S MESSAGE

by James Marburger, President

June has arrived after a very wet end of May. The high water event across Southeast Nebraska and Northeast Kansas has given us hope of finding great agates and fossils in the rivers. The event started May 27th and ran to June 1st with nearly 18 to 22 feet of water in the North Fork of the Big Nemaha River and tributaries to the South Fork of the Big Nemaha River. We did not get a good breakup of spring ice, but this flush should do the trick. The rivers have not receded back down to normal stages yet, so caution is needed if you go there to hunt. With the high water, the banks may be unstable, the mud deep, and possible quick sand. As things settle down, great hunting will be had. Also upland hunting should be good with the heavy run off that will expose many items.



The joint Kadoka, South Dakota trip with the Omaha Gem Club was a great success and was well-attended by both clubs. Rain made it a little tricky in places, but nice material was found. There was even a nighttime collecting event in the parking lot, using the black light.

June will be busy for the club this year, with programs being presented at the Beatrice and Lincoln libraries, and the Lincoln Wilderness Park System. Thanks to all of the volunteer presenters.

The Rock Party will be held at the Pittards' residence in Geneva on June 15. See page 3 for more information.

Saturday, June 29, with a rain date on the 30th, I will lead a field trip to the Fairbury area for fossil clams, worm tracks, wood, selenite, sharks teeth, cone-on-cone aragonite, and botryoidal iron plant casts. We will also make a site tour of the 6th Prime Meridian Monument, the point where surveying in Nebraska and a part of Kansas begins. We will follow the same path that the Midwest Federation field

trip took as part of the annual show. We will meet at the McDonald's in Fairbury at 9:00 a.m. Although most of the sites are road cuts, collecting material is plentiful. We will visit the famous Rose Creek Clay Pit, where fossil flowers have been found.

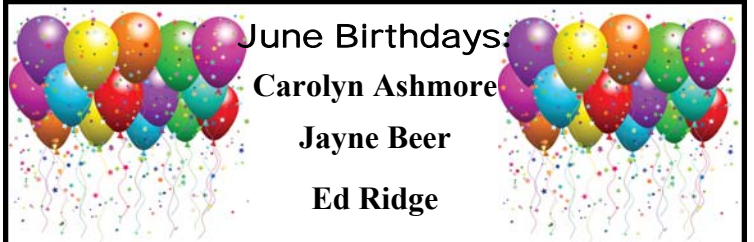
Mark your calendars for the Grinding Party at the Pioneer Park Nature Center, Chet Ager Building. That event will be July 14, 1-4 p.m. We will hold a picnic in the park afterwards. Come one, come all, and have fun!

We need articles for the Pick & Shovel!! It is your publication and information source!!!

## HAIKU

Written by Jacqueline Barnhardt

Rivers rise and fall  
Ancient bones tell new stories  
Tumbling to the sea



June Birthdays:

Carolyn Ashmore

Jayne Beer

Ed Ridge

# June Rock Party at The Pittards'

## Truly a Pot Luck Meal!!

Roger and Mary are not saying what the theme is, nor what they are preparing. Bring what you will and we will eat accordingly!

**Saturday, June 15**

**2:00 p.m.**

**Geneva, Nebraska**

See directions and map below

Bring your equipment and projects. There is plenty of room for everyone and equipment.

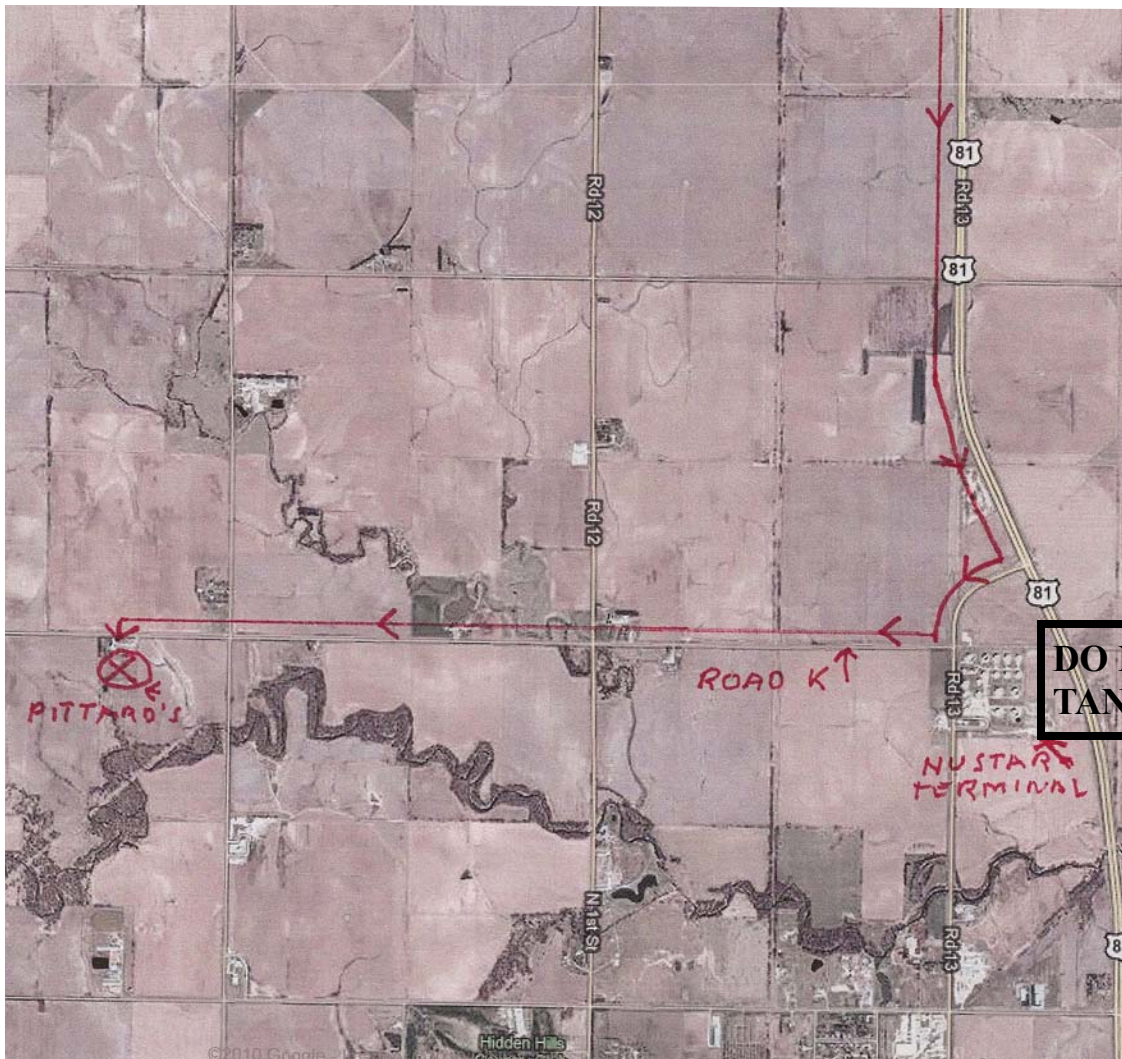
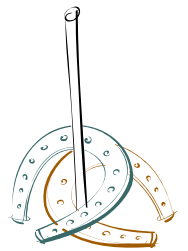
Some members expressed interest in working on the trailer. Be prepared for that activity, also, if you wish.

Roger has horseshoes, if you want to scare up a game with someone.

Otherwise, come for the food, fun, and fellowship.

### DIRECTIONS

- I-80 West to Exit 353 at York (approx. 40 miles)
- From Exit 353, turn left (south) on US-81 toward Geneva (19+ miles)



- Take the Thirteenth Street exit (the first of four exits for Geneva ), turn right, around a slight curve (¼ mile)
- Turn right (West) at gravel road (Road K), (this is on the north side of the Nu Star Pipeline Terminal) (go 2-1/3 miles)
- Turn Left into Pittard's driveway.

**DO NOT PASS  
TANK FARM!**



## APRIL GENERAL MEETING MINUTES

### May 16, 2013, Bethany Park Shelter House

Respectfully submitted by Mark Awakuni-Swetland, Secretary

- Meeting called to order at 7:05 p.m. by President Jim Marburger. Members present: 27 adults, 3 Mineral Monkeys, 3 adult and 1 youth guests.
- Minutes of the April 18, 2013 General Meeting as printed in the P&S were amended to read "NEW BUSINESS: Jim will arrange a field trip to Fairbury with June as the proposed time frame." Motion to approve amended minutes by Richard Peterson, 2nd by Pat Gritmit, motion carried.
- Treasurer's Report given by Vera Lyman with a list of April Show expenses paid. Overall the Club came out ahead with approximately 1,980 paid admissions. Motion to approve by Pat Dvorak, 2nd by Sharon Marburger, motion carried.

### ANNOUNCEMENTS

- Sharon Marburger noticed Ed Dvorak had arrived at the meeting riding a wheelchair and inquired as to the reason. Ed laughed while describing having experienced a 'grave misstep' that resulted in some broken bones.
- Jim Marburger reminded members to consult the P&S for descriptions of upcoming rock shows and field trips around the region.
- Jim reported that Steve May will host the May 18th Rock Party at his home north of Hickman.
- Reminder of the July 14th Grinding Party at the Pioneers Park Nature Center, Chet Ager Building, followed by a picnic. More details will be in the P&S.
- P&S Editor Sharon Marburger reminded members to submit articles, features, drawings, poetry, related announcements, and field trip reports for publication consideration.

### OLD BUSINESS

- Richard Peterson recapped the April Adopt-a-Highway clean-up activity on Highway 77. Overall the event was satisfactory. If a few more people volunteer, the overall distance each person has to walk/clean will be reduced.
- Susy McMahan circulated a complete copy of the Mini Miners Monthly for review. A sign-up sheet was available for anyone wishing to receive this monthly

publication. The annual subscription of \$3 was collected.

### NEW BUSINESS

- Karen Messenger reported that LGMC is being invited by the UNL School of Natural Resources to participate in a November field day at Hardin Hall (33rd and Holdrege). This is part of an outreach activity organized by Matt Joeckel. LGMC would be provided 1st floor activity space with one specific request being for rock identification.
- Susy McMahan requested permission to use the club's fluorescent light for an upcoming field trip. Approved.
- Karen Messenger circulated a flyer for a rock auction in Chadron, Nebraska on June 8-9. Lemmon Auction Service has posted information online.
- Gene Mulinex reported that the Boy Scouts are organizing a family campout May 31-June 1 at Swan Lake east of Milligan. Fourth and 5th grade participants will be working on their Geologist Pin. LGMC members interested in assisting in this effort are welcome.
- Roger and Mary Pittard will host a June 15 Rock Party at their Geneva, Nebraska home at 2:00 p.m. Bring equipment and projects to share, along with good food and fun company. We will use the opportunity to clean out and organize some materials in the LGMC trailer stored at the Pittards'. Details and a map will be forthcoming in the P&S.
- A June Club field trip to Fairbury is being planned. Visit with Jim Marburger if you have any suggestions.
- An August Rock Party is tentatively scheduled at Susy McMahan's.
- Richard Peterson is researching various public address systems for use at meetings, swap meets, etc. Cordless microphone systems are ~\$200. The current meeting used a microphone system owned by Ed Ridge. Jayne Beer volunteered trying her bass guitar amplifier/speaker.
- Motion to adjourn at 8:00 p.m. by Sharon Marburger, 2nd by Karen Messenger, motion carried.
- No program due to equipment failure.

## MAY ROCK PARTY

by Sharon Marburger

The May Rock Party was held at the residence of Steve May on the 18th. Ed Ridge, Wooly, Mark A-S, Jayne & Corey Beer, and the Marburgers joined Steve in an evening full of fun, laughter, tall tales, rock identification, and stone working.

Steve provided sloppy joe's, or sloppy steve's. I understand they were tasty! To complement the "steve's," there were assorted chips, muffins, salads, pies, homemade Indian bread and pudding, and brownies. Other food items were probably there, but I have blocked them out of my mind. Mmmmmm, veggies!

We all took a stab at helping Steve to identify the specimens he collected on his recent field trip. There appeared to be prairie agates, honey agates, jaspers, petrified wood, quartz, and a variety of other items not fully identified. Steve had a very nice assortment of finds.

After eating, several attendees made use of Steve's workshop, cutting stones, grinding and polishing specimens, and otherwise just enjoying the pleasant evening of friendship.



Steve looks on while Wooly cuts a stone



Steve and Corey compare notes and ideas on specimens



Hard at work



The meal is finished, but stories are still being told. Ed Ridge listens to Jim Marburger as Jayne Beer passes by.



A portion of Steve's treasures.

## Silversmithing classes

The Jewelry Connection Ltd.  
Indian Village Shopping Ctr.  
13th & Arapahoe, Lincoln

Tuesdays

April 30, 2013

thru

June 18, 2013

7:00 p.m. - 10:00 p.m.

Tuition: \$120 plus \$30 supply deposit

Contact:

Jayne Beer 402-890-3307

Judith Bay 402-423-7058

or e-mail

[jbeer60070@aol.com](mailto:jbeer60070@aol.com)

## I, TOO, AM A ROCKHOUND

by Carolyn Ashmore

As new members go, there are always lots of questions about this rock and that. You can love rocks all your life and not know a thing about what they are, or how they came to be, just that they have always fascinated you. You can't let a day go by without looking at them, touching them, or grinding them. You read about them, and you find yourself looking at river rocks at the Burger King drive thru. So during our unofficial field trip to Kadoka, South Dakota, there were still a lot of questions to ask, but there were seasoned Rock Hounds there to answer them all. With that said, I want to share an article I read that captures my sentiments in this regard. The article is entitled, "I Am a Rock Hound," written by Dr. Richard Hoffman and published in 1966.

My own concept of a rock hound is someone who seeks beauty and peace. He finds both in stones he hunts, collects and fashions into gems and jewels. He finds beauty in the desert and mountain trails that lead him far from the freeways, from the tumult and the shouting. He finds peace in the golden desert sunrise and in the purple twilight that paints the mountains. He is grateful for the generosity of fellow rock hounds whose time and patience have taught him most of what he knows of the art of the mineral collector, the lapidary, and the silversmith. He is thankfully humble that he can learn much from fellow rock hounds regardless of education, economic, or social status.

He appreciates knowing that his love for his fellow man is not dependent on college educations, Cadillacs, or the touch of mink. His satisfaction is great as he reflects on the truth, that many a heart of gold, beats to the sound of music, beneath a dirty shirt.

I want to thank the Lincoln and Omaha Clubs for all their help and the camaraderie I felt we all shared during this fantastic trip to the badlands.

Hoffman, Richard. "I Am A Rockhound." Lapidary Journal. September, 1966: page 786.



## LINCOLN CURIOS ROCK SHOP

6625 Burlington - Lincoln, NE 68507 [Park in alley]  
(402) 310-3307

### ► SPECIALIZING IN ARIZONA PETRIFIED WOOD ◀

- ◆ Rough stones and fossils for the hobbyist
- ◆ Polished stone items for interior décor
- ◆ Great selection of tumble-polished stones

Open Tuesday thru Saturday  
10 a.m. - 6 p.m.

**ON THE WAY TO KADOKA**

by Sharon Marburger

*Some of my favorite pieces*

Andrew Tiedje, Jim and I headed off to Kadoka, South Dakota a day before everyone else in order to take “the long way,” and stop at the Petrified Wood Museum in Ogallala, Nebraska. I had heard much about the museum and the Kenfield brothers, and decided it was time I made a visit.

We arrived at the museum around lunch time, so we had the place to ourselves. We started the tour of the facility with a very nice lady explaining all the nuances of the museum. She soon left us to explore on our own, smiling at our “Oooooos” and “Aaaahhs.”

There were several spectacular specimens of petrified woods and agates. I was especially enamored of a small coffee table, and left the museum with plans to design my own. The Kenfield brothers’ artwork using petrified wood was also somewhat mind-boggling. Great patience and attention to detail were evident in their work.

Several displays were on loan to the museum, while others had been donated. The Native American section was awe inspiring. It was presented in a very attractive manner, again with attention to detail. I was amazed at the number of artifacts that had been found locally, and I was somewhat intrigued by the display of lead slugs.



I had a great time there. If you like rocks and/or art, the Petrified Wood Museum is the place to go!

Photos by Sharon & Jim Marburger



**Rock-N-Wrap Jewelry**

**Betty Selby-Syslo, Certified Artisan**

Learn to make jewelry using minerals, rocks, beads & cabochons wrapped in sterling, gold filled or copper wire!

**Now at 2 locations!**

8705 S 36th St.  
Bellevue, NE 68147  
402.677.9289  
syslo@msn.com

The Jewelry Connection  
13th & Arapahoe, Lincoln, NE  
402.677.9289  
syslo@msn.com

**Contact Betty for class information.**

## AFMS CODE OF ETHICS

- I will respect both private and public property and will do no collecting on privately owned land without permission from the owner.
- I will keep informed on all laws, regulations or rules governing collecting on public lands and will observe them.
- I will, to the best of my ability, ascertain the boundary lines of property on which I plan to collect.
- I will use no firearms or blasting material in collecting areas.
- I will cause no willful damage to property of any kind such as fences, signs, buildings, etc.
- I will leave all gates as found.
- I will build fires only in designated or safe places and will be certain they are completely extinguished before leaving the area.
- I will discard no burning material - matches, cigarettes, etc.
- I will fill all excavation holes which may be dangerous to livestock.
- I will not contaminate wells, creeks, or other water supplies.
- I will cause no willful damage to collecting material and will take home only what I can reasonably use.
- I will practice conservation and undertake to utilize fully and well the materials I have collected and will recycle my surplus for the pleasure and benefit of others.
- I will support the rockhound project H.E.L.P. (Help Eliminate Litter Please) and will leave all collecting areas devoid of litter, regardless of how found.
- I will cooperate with field-trip leaders and those in designated authority in all collecting areas.
- I will report to my club or federation officers, Bureau of Land Management or other authorities, any deposit of petrified wood or other materials on public lands which should be protected for the enjoyment of future generations for public educational and scientific purposes.
- I will appreciate and protect our heritage of natural resources.
- I will observe the "Golden Rule," will use Good Outdoor Manners and will at all times conduct myself in a manner which will add to the stature and Public Image of Rockhounds everywhere.

*Field trip season  
is upon us.  
Take a moment  
to review the  
AFMS Code of Ethics.*

*Remember,  
it takes  
only one  
rockhound  
practicing  
bad  
stewardship  
of the land  
to have  
access  
privileges  
denied  
to us all.*



# HAVE FUN!

## J J & L Rocks & Minerals

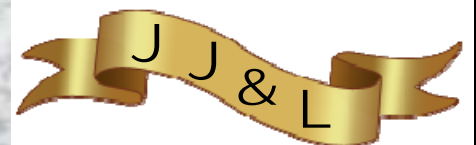
P.O. Box 68  
Hickman, NE 68372

330 Locust  
Hickman, NE 68372

John Harrison  
Lee Harrison  
402.792.2337

James Marburger  
Sharon Marburger  
402.792.2348

jimandjohn@jjlrocksandminerals.com  
www.jjlrocksandminerals.com  
jjlrocksmin - Ebay Username



Proudly serving  
the hobby for  
36 years

**MINERAL MONKEYS**

**Hi Monkeys!**



Photo by Susy McMahan



Photos by Sharon & Jim Marburger



At the May Rock Party, Corey shows one of his rock treasures to Sharon. Later, they shared Steve's lapidary equipment to grind and polish stones.

**ROCKHUNTING IN SOUTH DAKOTA**

By Ian Williams

I will never forget the time that my Grandma, my Dad, and of course me, went to South Dakota.

And where I want to start off is...when we got to our motel, I met up with my friends Jayden and Ivy. The next morning Corey was there and we went to the Buffalo Grasslands, where I climbed hills and found lots of rocks. I specifically heard a rattle snake, and after that stayed by the dirt path to hunt for rocks.

That night Corey's Mom, Jayne, made Hobo Stew and S'mores. Delicious!! Ivy, Corey, and I played Minecraft sitting in the dark at the picnic table.

On the way home Dad, Grandma, and I stopped at the 1880 Town and there were "gunslingers." An "outlaw" John, who was 15, and I robbed the bank, saloon and land grant office. My Dad and Grandma toured the town and ate peanuts and drank Sarsaparilla in the saloon. After I got out of "jail," I got a free Sarsaparilla.



All of the "boys" eating Hobo Stew, even Ian (below).

I will never forget the time I went to South Dakota.



Photo by Susy McMahan



## ALAA NEWS (EXCERPT BY TOM NOE)

### THE FUTURE AND AVAILABILITY OF ROCKHOUDING IN OREGON

by Gary Buss

(Note: In this article Gary offers two suggestions for clubs to be more proactive in keeping rockhounding sites open and maintaining them for the future. The first suggestion is for the club to file a claim on a site. This excerpt describes his second suggestion. The full article can be found on the ALAA web site.)

There are many old sites that have been worked over the years and just sit there. The Forest Service has a plan called adoption. The Forest Service has neither the manpower nor the money to restore these old digs and are looking to partner with groups that care about restoring and maintaining some of these areas. This is not a “name it and claim it” game, it is a joint venture with the Forest Service and Bureau of Land Management to keep these areas open to the future of rockhounds. They do care about the future of rockhounding in Oregon.

How would it look? It can be as simple as a rock club that has a once-a-year field trip to a site they choose to adopt and have its own field day. Half the group digs and produces material, while the others refill old dig sites and pick up whatever trash they find. After

a few hours, your people shift roles. In the meantime, maybe the barbeque is smelling pretty good for all at the end of the day. Adoption means that you as a club don't have to jump through all the hoops and rules and regulations of going the claim route—yet you maintain the site for your organization. There will always be old sites for you to look at and see if there is value for the future, or new areas that you would like to see as a future opportunity for your club.

I believe that adoption is the easiest and quickest way to maintain our past and to become a part of our future. This is a very different way to look at how we maintain our past and future in this hobby. Your children and theirs will be the beneficiaries of what we do now.

Excerpted from the July to Sept., 2012, American Lands Access Newsletter.

ALAA is the lobbying arm of the American Federation, working on behalf of rockhounds to keep public lands open and accessible to all, including the elderly and handicapped.

LGMC is a proud member of ALAA



## A BIG THANKS TO THE OMAHA CLUB - FROM THE LINCOLN CLUB!

by Sharon Marburger

Those of us from Lincoln who went to Kadoka, South Dakota for the Omaha Club's “unofficial” field trip, offer up a huge THANK YOU for inviting us to participate in your fun. The Lincoln members attending were Carolyn and Philip Paul Ashmore; Jayden Eno; Brian, Jayne, and Corey Beer; Susy McMahan (and Susy's son, Bobby, not a member but still a willing participant!); Ian Williams; Linda and Ivy Guenter (and Linda's non-member friend, Scott); Andrew Tiedje, and Jim & Sharon Marburger. I personally would like to add an extra thank you to Allan Jeanneret, for being a great “wagon master”; Erma Pharoah, for sharing her knowledge; and Alda Schwenke for keeping us on the straight-and-narrow with Fairburn Agate identification.

We had a fantastic time and brought home lots of prairie agates, petrified wood, quartz, jasper, and some stuff we really don't know what they are. They are pretty, so they are not leaverites!

The weather was great; we had a full spectrum of it during the time we were there. Sunshine, wind, no wind, fog, rain, clouds. No snow, so we couldn't ask for better!



Photos by Sharon & Jim Marburger

**STANDING COMMITTEES CHAIRMEN**

Audit	John Harrison James Marburger Ed Dvorak
Christmas Party	Edward Ridge
Education / Librarian	Charles Wooldridge Judy Cropp
Facebook	Andrew Tiedje
Field Trips	James Marburger
Geology Day Coordinator	Aulden Stewart
Grinding Party	Aulden Stewart
Historian	Sharon Marburger
Legislative Liaison	Robert Cropp
Membership Record	Edward Ridge
MWF Liaison	Vera Lyman
Programs	Jayne Beer/Judy Cropp
Property	James Marburger
Refreshments / Door Prizes	Mary Pittard
Scholarship	Vera Lyman
Show—2014	Charles Wooldridge
Swap—2014	Richard Peterson
Website	Jim Atkins
Youth Activities	Andrew Tiedje Susy McMahan Kay Jurgens

**ADVERTISING, SUBSCRIPTION,  
AND MEMBERSHIP INFORMATION**

Advertising by rock / hobby business or interest is permitted with the approval of the Board of Directors. Contact the Editor with your proposed ad. The rate is set at \$20.00 per full page; \$10.00 per 1/2 page; \$5.00 per 1/4 page (minimum) per issue, paid in advance to the Club treasurer. Ads will be placed throughout the newsletter as space permits.

Subscription to the Pick & Shovel is \$15.00 per year for mailed copy.

Membership dues for the Lincoln Gem & Mineral Club are as follows:

Adults (age 16 and over) - \$15 per year or \$25 per couple (within the same household)

Juniors - \$2 per year (with a responsible adult)

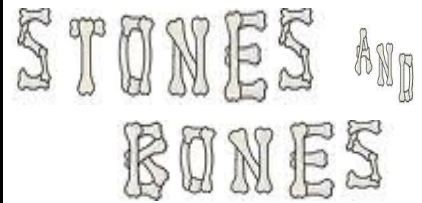
All new memberships must be accompanied by a written application. Prospective members must gain Board approval and attend one regular meeting before being approved for membership.

**LONG RANGE PLANNING &  
BY-LAWS COMMITTEE**

Richard Peterson, Chairman	
1 year:	Charles Wooldridge Sharon Marburger
2 years:	Vera Lyman John Harrison
3 years:	Edward Ridge Robert Cropp

**NOMINATING COMMITTEE**

Richard Peterson, Chairman	
1 year:	Robert Cropp Judy Cropp
2 years:	Brad Nielsen Roger Pittard
3 years:	Vera Lyman Edward Ridge



**2014 SHOW COMMITTEE**

- Chairman:.....Charles Wooldridge
- Breakfast: .....
- Dealers: .....
- Demonstrators: .....
- Displays: .....
- Event Center Liaison.....
- Finance & Ticket Sales: ..... Vera Lyman
- Floor Chairman: .....
- Forms .....Sharon Marburger
- LGMC Club Booth: .....
- Plants:..... Ed Ridge
- Printed Program: .....Sharon Marburger
- Programs & Speakers: .....
- Publicity & Promotion: .....
- Ribbons & Recognitions: .....
- Security: ..... Vera Lyman
- Silent Auction: .....
- Special Features: .....
- Web Master:..... Jim Atkins
- Youth Activities: .....

I have had a really great time hanging out with my good buddy, Pie Server Marburger, but I am now homesick. Will someone please tell Sharon how to get me back to my family?



Red Handled Slotted Spoon

Or e-mail newsletters to:  
lgmc.editor@windstream.net

Lincoln, NE 68505-0342  
P.O. Box 5342  
Lincoln Gem & Mineral Club, Inc.

Mail Exchange Newsletters to:



# PICK & SHOVEL

THE *PICK & SHOVEL* IS THE OFFICIAL PUBLICATION OF THE LINCOLN GEM & MINERAL CLUB, INC., LINCOLN, NEBRASKA. **ARTICLES AND ITEMS APPEARING WITHIN MAY BE REPRODUCED IN OTHER CLUB BULLETINS, PROVIDED PROPER CREDIT IS GIVEN TO THE *PICK & SHOVEL* AND THE AUTHOR, AND THAT A REPRINT OF THE ARTICLE IS SENT TO THE EDITOR OF THE *PICK & SHOVEL*.**

## YOUR PICK & SHOVEL STAFF:

**PUBLISHER:** LINCOLN GEM & MINERAL CLUB,  
INC., P.O. BOX 5342, LINCOLN,  
NEBRASKA 68505-0342

**EDITOR:** SHARON MARBURGER, P.O. BOX 64,  
HICKMAN, NEBRASKA 68372, E-MAIL:  
LGMC.EDITOR@WINDSTREAM.NET

**CIRCULATION:** VERA LYMAN, 402-464-6089

**REPORTERS:** ALL MEMBERS ARE ENCOURAGED TO  
SUBMIT FEATURES, ARTICLES,  
POETRY, OR DRAWINGS.

## LGMC is a member of:

