




Lincoln Gem & Mineral Club, Inc.'s

# PICK & SHOVEL

P.O. Box 5342, Lincoln, Nebraska 68505-0342, [www.lincolngemmineralclub.org](http://www.lincolngemmineralclub.org)

Volume 55, Issue 7  
March 2013

  
The purpose of this corporation shall be to study, promote an interest in, and disseminate knowledge of lapidary and various Earth Sciences including but not necessarily limited to Geology, Paleontology and Mineralogy. It shall be a particular purpose of the corporation to provide education in these fields to its members and the general public, especially to youth and student groups.



## UPCOMING EVENTS

Regular monthly meetings are held at 7:00 p.m. at the Bethany Park Shelter House. Youth activities begin at 6:30 p.m. Summer activities will be announced as they are planned.

### REGIONAL SHOWS

**March 15-17: KANSAS CITY, MO:** Greater Kansas City Association of Earth Science Clubs' Annual Show; KCI Expo Center, 11730 NW Ambassador Dr; Fri. 9-8, Sat. 10-7, Sun. 10-5; Contact: Mark Sherwood, 816.690.8226; [kcgsinfo@yahoo.com](mailto:kcgsinfo@yahoo.com); [www.kcgemshow.org](http://www.kcgemshow.org) or [www.gemshowkc.org](http://www.gemshowkc.org).

**March 16-17: CEDAR RAPIDS, IA:** Cedar Valley Rocks & Minerals Society's 49th Annual Show; Hawkeye Downs Expo Center, 4400 6th St. SW; Sat. 8:30-6, Sun. 9:30-5, Contact: Marvin Houg, 319.364.2868, [m\\_houg@yahoo.com](mailto:m_houg@yahoo.com), Sharon Sonnleitner, 319.396.4016, [sonnb@aol.com](mailto:sonnb@aol.com), Tom Whitlatch, 319.362.0684, [whitlatcht@gmail.com](mailto:whitlatcht@gmail.com), [www.cedarvalleyrockclub.org](http://www.cedarvalleyrockclub.org).

**March 22-24: ST. LOUIS COUNTY, MO.** Rock Hobby Club of Greater St. Louis' Annual Show; Machinist Hall Auditorium, 12365 St. Charles Rock Road (Bridgeton), Fri. 4-9 p.m., Sat. 10-7, Sun. 10-5; Contact: Willis Smith, Publicity, 314.521.8896 or Roy Hurlburt, President 314.846.0711.

### General Meeting

March 21, 2013  
7:00 p.m.

Program: Video on Emeralds

### Mineral Monkeys

NO MEETING DUE TO  
SCIENCE FAIR

### 2013 Meeting Dates

#### Board

*Meetings held at  
Gere Library*

Wed., April 3

Wed., May 1

Wed., September 4

Wed., October 2

Wed., November 6

#### General

Thurs., February 21

Thurs., March 21

Thurs., April 18

Thurs., May 16

Thurs., September 19

Thurs., October 17

Thurs., November 21

Sunday, December 1  
(Christmas Party)

**April 6-7: LINCOLN, NE.**

**Lincoln Gem & Mineral Club, Inc.'s  
55th Annual Show**

**(MWF Show & Convention)**

**Lancaster Event Center**

**84th & Havelock**

**Sat. 9-6, Sun. 10-5**

**Contact: Charles Wooldridge**

**402.416.3233**

**[charles.wooldridge@nebraska.gov](mailto:charles.wooldridge@nebraska.gov),  
[www.lincolngemmineralclub.org](http://www.lincolngemmineralclub.org)**

## BOARD OF DIRECTORS

### President

James Marburger, 402.792.2348  
jm24122@windstream.net

### 1<sup>st</sup> Vice-President

Ed Dvorak, 402.946.3041  
ed20649@windstream.net

### 2<sup>nd</sup> Vice-President

Aulden Stewart, 402.483.1044  
mmstewart@inebraska.com

### Treasurer

Vera Lyman, 402.464.6089

### Secretary

Mark Awakuni-Swetland, 402.770.3521  
mawakuni-swetland2@unl.edu

### Board Member

Jayne Beer, 402.890.3307  
JBeer60070@aol.com

### Board Member

Robert Cropp, 402.465.8432  
rowdycr@hotmail.com

### Board Member

Richard Peterson, 402.489.2996  
padr20@yahoo.com

### Board Member

Charles Wooldridge, 402.416.3233  
charles.wooldridge@nebraska.gov

## PRESIDENT'S MESSAGE

by James Marburger, President

Well, if you cry, "woof, woof," or "wolf," you could be a dog or a weatherman in Nebraska. The large storm did not come last month, but I feel that it was a good decision to cancel the meeting. Roads were bad and it was cold and icky.



So, now we have to get on the band wagon for our show in April, and to put our best foot forward for our guests from all over the nation. Please offer your time to help with the show. We have set-up, club booth, juniors, silent auction, field trips, parking lot field trip, programs, meetings, breakfast, lunch, and the banquet, just to mention a few things. Help is needed with it all.

Please take the time to fill out the registration form for the show. We need an accurate count of members who plan to enjoy the luncheon and/or banquet on Saturday, or breakfast on Sunday. The Event Center caterer needs to know, by mid-March, how much food to prepare for each of the meals. If you do not complete and submit a registration form by March 15, you will miss out.

A Midwest Federation Show will not be back in our area again for quite a while. Come, have fun, and be a part of the fun. I know it makes long days, but it will be worth it.

We will have the April Rock Party in Hickman after Clean-up Day on Highway 77. We will have more information next month. If you would like to host a rock party at your home, please step up and let it be known. They are a great way to share the rockhound information that we all have.

What do you want from YOUR CLUB?

Oh yeah! Do not forget to kiss the blarney stone, or an agate, this month.

## SUNSHINE CORNER

March Birthdays:

Dan Cromer

Pat Dvorak

Jim Marburger

Greg Syslo

### SAVE THE DATE

April 20, 2013

Highway 77 Roadside Clean-up

followed by

Rock Party at

The Marburgers

## REFRESHMENTS SCHEDULE

Mar. 21:	Ed & Pat Dvorak, Jim Atkins	Bar Cookies
Apr. 18:	Roger & Mary Pittard, Vera Lyman	Cookies
May 16:	Linda Guenter, Richard Peterson	Cake

**Zeotis-LPS-Norvartis Science Fair**  
**Thursday, March 21, 2013, 5 p.m. to 8 p.m.**  
**Lancaster Event Center**

**Plan to arrive between 2:30 and 3:00 for setup.**

## JANUARY GENERAL MEETING MINUTES (REPRINT)

### January 26, 2013, Bethany Park Shelter House

Respectfully submitted by Mark Awakuni-Swetland, Secretary

#### Annual Mid-Winter Rock Swap

- Meeting called to order at 7:00 p.m. by President Jim Marburger following a pizza supper.
- Adult members present: 30; Mineral Monkeys present: 9.
- Minutes of December 2, 2012 as printed in the January 2013 P&S approved on motion by Wooly and 2nd by Ed Dvorak, AYE: unanimous, NAY: none.
- Treasurer's Report given by Vera Lyman, approved on motion by Roger Pittard, 2nd by Ed Dvorak, AYE: unanimous, NAY: none.

#### ANNOUNCEMENTS

- Jim acknowledged this being the Club's 58th founding anniversary with thanks to Vera Lyman for providing an anniversary cake.
- Thanks to all members who worked on the day's swap. Special mention made to Richard Peterson for organizing.

- Thanks to all those who helped Mary Pittard by volunteering to provide snacks for the remaining 2013 general meetings.
- Jim made a request for members willing to host the monthly rock parties.
- Ed Dvorak was acknowledged by the Club with a plaque and applause as the "Rock Hound of the Year, 2012" for always being on the spot to help with whatever was needed.
- Richard Peterson was acknowledged by the Club with a plaque and applause for "Outstanding Service, 2011-2012" for his role as Club President.
- Jim pointed out the Feather River Rock Club's tumbled stone competition described in the January P&S. Sharon reported that MWF members had placed highly in the 2012 international competition.

#### OLD BUSINESS

- Richard reported on the Adopt-A-Highway proposal for the Club to clean up a two mile stretch of Highway 77 near Hickman Road. Supplies would be provided for a biennial clean up. After the first clean up the Club's name would be posted on both ends of the two mile stretch. Richard will examine the relevant stretch of road. The Club will adopt a two mile stretch on a motion by Wooly, 2nd by Ed Dvorak, AYE: unanimous, NAY: none.
- Reminder of the Club's Geology Day activity on February 10th at the Pioneers Park Nature Center, Chet Ager Building, beginning at 1:00 p.m. Set up time at noon. Scout groups are seeking the geology badge, and some home-schooled students want geology/rock education. Small displays, information, and activities for kids are needed. Past events have hosted one- to two-hundred visitors.
- The SCIENCE FAIR will be in March with the date TBA. Susy McMahan is heading up the Club's role.
- Jim proposed the Club think about creating an outreach coordinator. The Club regularly receives requests for programs and information from out of town schools, home-schools, scout groups, and assisted living homes. Anyone interested should talk to Jim.

#### NEW BUSINESS

- Sharon called for members to submit items for the P&S. These can include articles, features, poems, illustrations, etc.). Mark A-S asked if the P&S could

*(Continued on page 4)*

## SILVERSMITHING CLASSES

**The Jewelry Connection Ltd.  
Indian Village Shopping Ctr.  
13th & Arapahoe, Lincoln**

Tuesdays

**March 5, 2013**

thru

**April 23, 2013**

**7:00 p.m. - 10:00 p.m.**

**Tuition: \$120 plus \$30 supply deposit**

**Contact:**

**Jayne Beer 402-890-3307**

**Judith Bay 402-423-7058**

**or e-mail**

**jbeer60070@aol.com**



## FEBRUARY BOARD MEETING MINUTES


February 6, 2013 (February meeting), Vera Lyman's Home  
Respectfully submitted by Mark Awakuni-Swetland

- Meeting called to order at 6:35 p.m. by President Jim Marburger.
- Members Present: Jim Marburger, Ed Dvorak, Vera Lyman, Mark Awakuni-Swetland, Jayne Beer, Richard Peterson, Charles Wooldridge, Aulden Stewart.
- Visitors: Ed Ridge, Pat Dvorak, Sharon Marburger
- Minutes of the December Board meeting were distributed. Charles Woodridge moved to accept the minutes as read, second by Richard Peterson. Motion carried.
- Minutes of the January Board meeting were distributed. Discussion followed. The reference to Mineral Monkeys assignments on Facebook were further described as pre-meeting homework. A friendly amendment was offered that the minutes reflect the Classic Conversations and Cub Scouts will be handled at the Geology Day. Ed Dvorak moved to accept the minutes as amended, second by Jayne Beer. Motion carried.
- Treasurer's Report distributed by Vera Lyman. Charles Wooldridge moved to accept the treasurer's report, second by Ed Dvorak. Motion carried.

### OLD BUSINESS

- Reminder of the Club's Geology Day activity on February 10th at the Chet Ager Nature Center at Pioneer Park, beginning at 1:00 p.m. Set up time at noon. Scout groups are seeking the geology badge, and some home-schooled students want geology/rock education. Small displays, information, and activities for kids are needed. Past events have hosted one or two hundred visitors.
- The Science Fair is March 21st (Thursday) from 4:00-7:00 p.m. Susy McMahan is heading up the Club's role. Perhaps members can assist in the Science Fair and then attend the LGMC regular meeting at 7:00 p.m.
- The Adopt-A-Highway contract was distributed. Charles Wooldridge moved to accept the contract to clean up a two-mile stretch of Highway 77 between mile markers 47-49, second by Richard Peterson. Motion carried. Richard will deliver the contract to the Department of Roads.

### NEW BUSINESS

- Jayne Beer inquired about making club t-shirts. Vera described a t-shirt quote provided by the club vest maker. The question of a club t-shirt will be brought to the February General Meeting for discussion.
- Charles Wooldridge reported on his post-Central America trip battle with *Dermatobia hominis*, the parasitic Bot Fly. 
- New member applications reviewed. Discussion about a youth applicant without attendant parent/guardian. This individual will be supervised by Susy McMahan. Ed Dvorak moved to accept all applicants, second by Jayne Beer. Motion carried.
- Vera requested a 2013 Club Budget from President Jim Marburger.
- Jim proposed the Club think about creating an outreach coordinator. He listed requests for programs from the Nebraska City Library and Beatrice Public Library as examples. The coordinator would not be expected to attend every presentation but would make sure the events were covered. Several members voiced interest in participating in events, but were unable to take on the role of coordinator. The question will be brought to the February General Meeting for discussion.
- Recent Rock Swap discussion. A suggestion to charge vendors a flat fee for the limited space to offset building rental cost (\$175). Charles Wooldridge moved to set a \$10 per 4 foot linear space fee (1/2 of an 8' standard table), second by Ed Dvorak. Motion carried. Discussion about enforcing across-the-board the existing "no access by vendors to the building before the 12:00 noon set-up time". This to avoid creating opportunities for contention.
- A future club field trip might consider going to the Hastings Museum of Natural History to view displays of rocks and minerals.

### APRIL SHOW

- Bob Gruit continues to work on Special Features and Programs.
- Charles Wooldridge will meet with Morrill Hall

*(Continued on page 6)*

## BOARD MEETING MINUTES - CONT'D

(Continued from page 5)

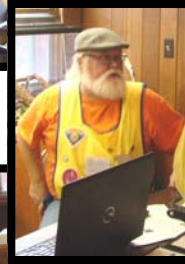
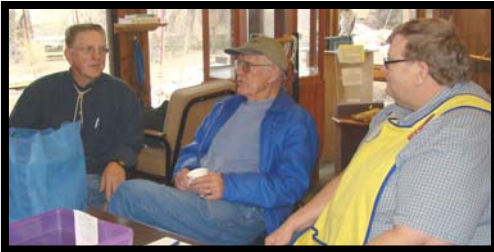
Director Mark Harris to do a Channel 5 advertising spot. Other members willing to be filmed/interviewed are welcome.

- Ed Ridge is coordinating display space and display case needs. The P&S will post a description and pictures of the various sizes of display cases available.
- Vera will bring a pre-registration form to the February meeting for members to sign up for the Friday reception, breakfast, and banquet. Banquet cost is \$22, and will be an opportunity to socialize with other MWF members.
- Members are asked to be willing to relinquish their space on the planned field trips so that visitors can have the opportunity to go. We can arrange for the trips to be repeated for club members on a future date.
- Vera reported on efforts to solicit advertising to offset printing costs of the show program. She has contacted several local businesses with an offer for a business card-size space for \$25 with some early success.
- Meeting adjourned at 8:25 p.m. on a motion by Richard Peterson, second by Ed Dvorak. Motion carried.

MA-S (Scribe)

**BELOW:**  
Ed Dvorak, Charles Messenger, Jim Marburger, Aulden Stewart

Geology Day Photos courtesy of Sharon Marburger



**Nancy Akins, Charles Wooldridge,  
Corey Beer, Ed Ridge,  
Mark Awakuni-Swetland, and Susy McMahan.**

by Karen Messenger

Thanks again for a fun and informative (if not too busy) Geology Day. The cold, windy, and cloudy weather seemed to cut our crowd down, even if we had a nice, warm place to be. We ended up with just 32 adults and 26 children, for a total of 58.

All the hardy presenters put on a good show; there were ten of you. As always, the give-aways were enjoyed by kids of all ages, along with the information.

Jim Marburger asked at Geology Day if the Nature Center might consider moving the event to the second Sunday in March, in an attempt to avoid possible bad weather, and now that the Rock Show is in April instead of March. I checked with our coordinator and the change would be fine. So, if the Club okays the change, the proposed dates for 2014 are: Sunday, March 9, 2014 for Geology Day; and Sunday, July 13, 2014 for the Grinding Party.

## Rock-N-Wrap Jewelry

Betty Selby-Syslo, Certified Artisan

Learn to make jewelry using minerals, rocks, beads & cabochons wrapped in sterling, gold filled or copper wire!

Now at 2 locations!

8705 S 36th St.  
Bellevue, NE 68147  
402.677.9289  
syslo@msn.com

The Jewelry Connection  
13th & Arapahoe, Lincoln, NE  
402.677.9289  
syslo@msn.com

Contact Betty for class information.



## SHOW REGISTRATION AND CLUB DISPLAY CASES

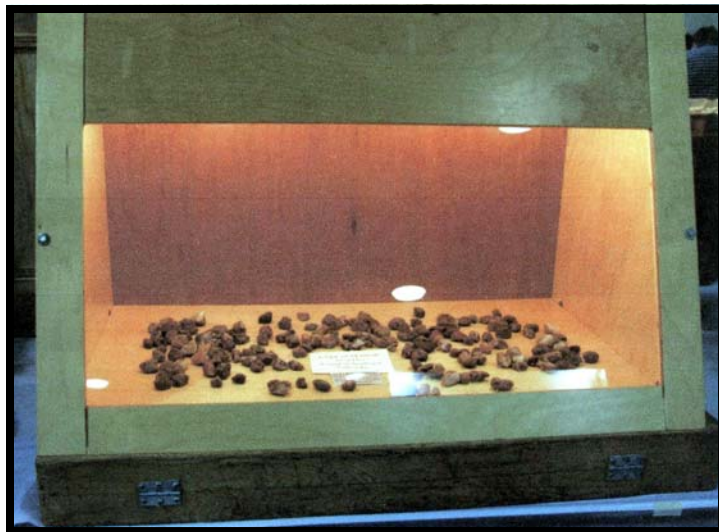
by Ed Ridge & Sharon Marburger

Have you completed your Show Registration Form? If you plan to attend any of the functions, your form must be received by Vera Lyman **no later than March 15**. No last-minute requests will be accepted.

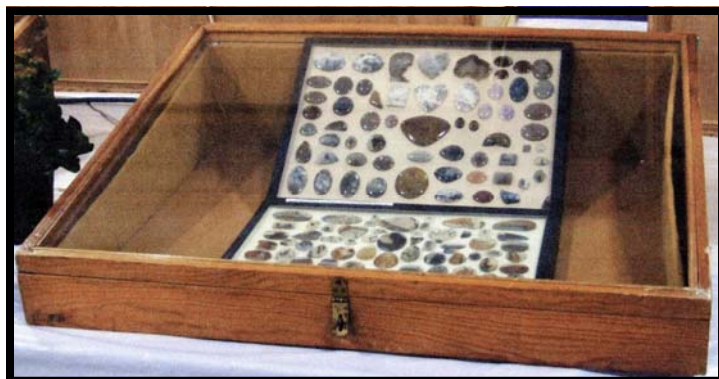
All members and participants are encouraged to attend the Club and MWF functions. Plan to attend the Friday evening "Cracker Barrel" where you can hear the Director of the USGS Nebraska Water Science Center speak. Spend Saturday evening at the MWF Awards Banquet where you'll get good food and see your friends maybe win an award! And don't forget the Sunday morning breakfast for club members, dealers, and MWF visitors. The Editors' meeting will follow at 9 a.m. Don't forget to mark all the activities on your registration form!

There have been many inquiries about club cases. What are their sizes and what do they look like? The following is designed to help you determine which kind of case you need for your display. Once you decide, let Ed Ridge know of your needs. Ed also needs to know how much space you will need if you bring your own case.

The Club's 39 cases are comprised of four different styles: the Frank Rule case, of which there are 3; the Wichita case, of which there are 5; the Gless case, of which there are 16; and the new case, of which there are 15.



The Wichita case is 31" wide by 24" deep and 8" high (shown below).

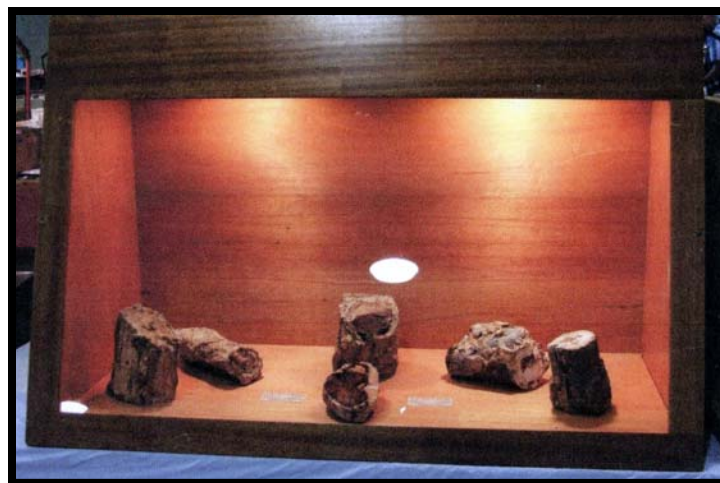


Like the Gless and new cases, the Frank Rule case is roughly 48" wide by 23" deep and 32" high (shown below).



The new cases (shown above) are approximately 48" wide by 23" deep and 32" high.

The Gless case is very similar to the new case. It, too, is approximately 48" wide by 23" deep and 32" high (shown at top of next column).



**Remember to put in your case and space reservations with Ed Ridge as soon as possible!**

Photos courtesy of Ed Ridge

## ALAA NEWS

(EXCERPT PROVIDED BY TOM NOE)

### It's 10 P.M.: Do You Know What Your Land Managers Are Doing? Part Two

By Shirley Leeson, ALAA President

Signed into law January 1, 1970, the National Environmental Policy Act (NEPA) simply tells us to weigh the human benefits of a proposed project against the environmental costs. NEPA does not say that the environment is more important than humans.

Those of you who have U.S. Forests in your state may have read articles or seen TV news reports on lawsuits about the public use of forest lands.

There is a Travel Management Rule (TMR) that requires every forest to produce a Motor Vehicle Use Map (MVUM), which describes where vehicles are allowed to go, by vehicle type, and which seasonal closures are applicable. (The TMR does not apply to snowmobiles.) All routes (trails and roads) get one of three designations:

- Motorcycle only (single track).
- ATV and motorcycle (under 50 inches wide), but no full-sized vehicles.
- All vehicles (motorcycles, ATVs and 4WD).

The TMR decisions also determine whether and where people are allowed to go off a designated route to retrieve big game (elk, deer, bear) and where people are allowed to "disperse camp." Dispersed camping means camping out of your vehicle. In the past, the common policy was a 300-foot corridor on either side of all forest roads. You could drive into the forest, find a nice spot off the side of the road, and set up camp. Now these corridors are being challenged.

Some of the proposed changes by the forest managers require public input. Do you know enough about what is happening in the forests near you to give that input?

—Excerpted from the April to June, 2012, ALAA Newsletter

ALAA is the lobbying arm of the American Federation, working on behalf of rockhounds to keep public lands open and accessible to all, including the elderly and handicapped.

**LGMC is a proud member of ALAA**

## ROCK PARTIES

by Sharon Marburger

There was no rock party in February and there will not be one in March. Everyone is very busy getting ready for the Show.

The April Rock Party will be hosted by the Marburgers. Details will appear in the April Pick & Shovel.

If you have not attended a Rock Party, or have never hosted one, please consider it. They are a lot of fun and not much work. All you need is some space to set out the potluck food, provide regular or picnic service, and have floor and chairs to seat people. Don't worry if you have no equipment; people bring their own.

Let President Jim Marburger know if you would like to host a party. All months, May thru December, are still available.

## J J & L Rocks & Minerals

P.O. Box 68  
Hickman, NE 68372

John Harrison  
Lee Harrison  
402.792.2337

330 Locust  
Hickman, NE 68372

James Marburger  
Sharon Marburger  
402.792.2348

jimandjohn@jjlrocksandminerals.com  
www.jjlrocksandminerals.com  
jjlrocksmin - Ebay Username



Proudly serving  
the hobby for  
36 years

## MINERAL MONKEYS

**There will not be a Mineral Monkey lesson at the March meeting.  
Most of the Monkeys will be at the Science Fair!**

### FIELD TRIP WITH THE OMAHA CLUB

by Susy McMahan,

Some members from the Omaha club are planning an “unofficial” club trip; in other words, if you show up, you are included. The article below is from their newsletter. I talked with President Allan Jeanneret, who said we are more than welcome to extend an invitation to Lincoln club members for this “unofficial” trip. The Omaha club used to go every Memorial Day weekend, but haven’t for the past several years. I went on several of them, and they are great fun!! It is a good trip for people who are not able to climb hills, as the terrain is pretty flat. All you need is a screwdriver to pop agates out of the ground and a bucket to put them in. And a bucket to sit on. The rattlesnakes should be only in thickets of grass/big rocks. I never saw one in any of the several trips I took. Also, if you are not there when they leave for hunting in the morning, they won’t wait, so don’t be late! For any questions, call Allan at 402-873-6515.



### Kadoka South Dakota Field Trip

Memorial weekend

Meet at the Kadoka Kampground behind the Sundowner Inn in Kadoka South Dakota off I-90 exit 150 at 8:00 am. Mountain Time on **Saturday** and **Sunday** mornings. Kadoka is about 450 miles from Omaha. It’s about 7-8 hour drive depending on how long you stop for breaks. Rock hunting is free. Please do not litter. Leave gates how you found them. If one is open leave it open, if one is closed close it after you pass through it.

This trip is perfect for kids old enough to watch out for snakes and cactus. There are Rattlesnakes there, so watch out for them.

Rocks to be found there are Prairie agates, Bubble Gum agates, petrified wood, Jasper, and a few lucky people might find a Fairburn agate!

Bring: Sunscreen, hat, long sleeve shirt to protect you from the sun, plenty of buckets for the rocks you find, an eight or ten inch screwdriver to pry the rocks loose from the dirt and **PLENTY OF WATER**. Also bring something to eat in the field like a sandwich and snacks.

Gas stations – Amoco, Texaco, Conoco.

Cafes – Jigger’s exit 150 (our favorite)

Happy Chef exit 150

Burns Bros. truck stop exit 152 open 24 hours

Motels – Wagon Wheel Motel [1-605-837-2404](tel:1-605-837-2404)

Budget Host Sundowner Motel [1-605-837-2296](tel:1-605-837-2296)

West Motel [1-605-837-2427](tel:1-605-837-2427) Leewood Motel [1-605-837-2238](tel:1-605-837-2238)

Best Western [1-800-528-1234](tel:1-800-528-1234)

Camping - Kadoka Kampground I-90 exit 150 (behind Sundowner Inn) [1-605-837-2243](tel:1-605-837-2243)

Showers and RV hook up’s and Tent sites

Show Flyers for handout will be available at the March General Meeting. We have full sized sheets, half sheets, and postcards. This year’s “Indiana Jones” flyers look AWESOME, so take a stack and spread them around. Or, if you prefer, you may reproduce the flyer on page 10 of this newsletter. Let’s make this show sparkle and shine! Don’t forget to talk it up; spread the word to everyone with whom you come in contact.

Wouldn’t it be great to have record attendance?

**DEALERS DEMONSTRATIONS CHILDREN'S ACTIVITIES**

**AGATES  
SUPPLIES & EQUIPMENT  
JEWELRY-MAKING  
GEM & FOSSILS**

**FIELD TRIPS  
PETRIFIED WOOD  
ROUGH & UNCUT GEMS  
FUN**

**Lincoln Gem and Mineral Club, Inc.  
Proudly Presents Its 55<sup>th</sup> Annual  
Gem and Mineral Show**

**“Our Emerald Jubilee”**

Saturday, April 6, 2013: 9:00 a.m. to 6:00 p.m.  
Sunday, April 7, 2013: 10:00 a.m. to 5:00 p.m.

Lancaster Event Center  
84th and Havelock, Lincoln, Nebraska



**FREE natural  
emerald specimen  
to the first  
2,000  
paid admissions!**

Held in conjunction with the Annual Conventions of the Midwest Federation of Mineralogical Societies and the Nebraska Association of Earth Science Clubs



Admission: \$5 per adult, children 11 and under free with paid adult. \$9 for a 2-day pass. Bring this coupon or can of food for the Lincoln Food Bank to receive \$1 off admission for each adult in party.

**EDUCATIONAL PROGRAMS MINERALS GEMSTONES!**

**STANDING COMMITTEES CHAIRMEN**

Audit	John Harrison James Marburger Ed Dvorak
Christmas Party	Edward Ridge
Education / Librarian	Charles Wooldridge Judy Cropp
Facebook	Andrew Tiedje
Field Trips	James Marburger
Geology Day Coordinator	Aulden Stewart
Grinding Party	Aulden Stewart
Historian	Sharon Marburger
Legislative Liaison	Robert Cropp
Membership Record	Edward Ridge
MWF Liaison	Vera Lyman
Programs	Jayne Beer/Judy Cropp
Property	James Marburger
Refreshments / Door Prizes	Mary Pittard
Scholarship	Vera Lyman
Show—2013	Charles Wooldridge
Swap—2013	Richard Peterson
Website	Jim Atkins
Youth Activities	Andrew Tiedje Susy McMahan Kay Jurgens

**ADVERTISING, SUBSCRIPTION,  
AND MEMBERSHIP INFORMATION**

Advertising by rock / hobby business or interest is permitted with the approval of the Board of Directors. Contact the Editor with your proposed ad. The rate is set at \$20.00 per full page; \$10.00 per 1/2 page; \$5.00 per 1/4 page (minimum) per issue, paid in advance to the Club treasurer. Ads will be placed throughout the newsletter as space permits.

Subscription to the Pick & Shovel is \$15.00 per year for mailed copy.

Membership dues for the Lincoln Gem & Mineral Club are as follows:

Adults (age 16 and over) - \$15 per year or \$25 per couple (within the same household)

Juniors - \$2 per year (with a responsible adult)

All new memberships must be accompanied by a written application. Prospective members must gain Board approval and attend one regular meeting before being approved for membership.

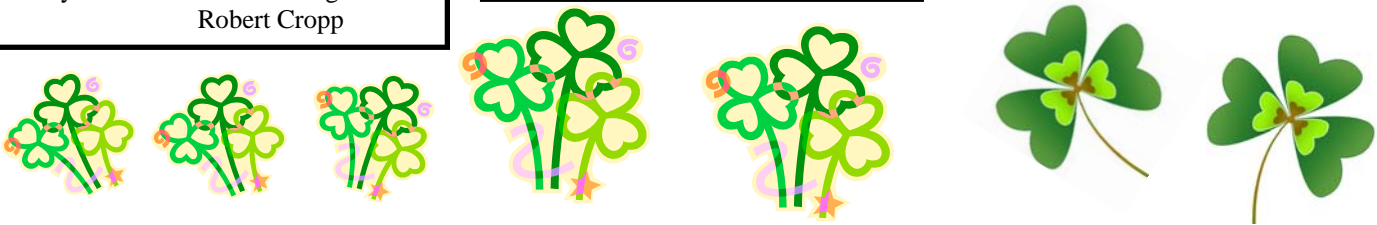
**LONG RANGE PLANNING &  
BY-LAWS COMMITTEE**

	Richard Peterson, Chairman
1 year:	Charles Wooldridge Sharon Marburger
2 years:	Vera Lyman John Harrison
3 years:	Edward Ridge Robert Cropp

**NOMINATING COMMITTEE**

	Richard Peterson, Chairman
1 year:	Robert Cropp Judy Cropp
2 years:	Brad Nielsen Roger Pittard
3 years:	Vera Lyman Edward Ridge

Watch for details  
next month  
regarding the  
Highway 77  
Roadside Clean-up  
on Saturday,  
April 20, 2013.



**LINCOLN CURIOS ROCK SHOP**

6625 Burlington - Lincoln, NE 68507 [Park in alley]  
(402) 310-3307

► **SPECIALIZING IN ARIZONA PETRIFIED WOOD** ◀

- ◆ Rough stones and fossils for the hobbyist
- ◆ Polished stone items for interior décor
- ◆ Great selection of tumble-polished stones

Open Tuesday thru Saturday  
10 a.m. - 6 p.m.

Mail Exchange Newsletters to:  
Lincoln Gem & Mineral Club, Inc.  
P.O. Box 5342  
Lincoln, NE 68505-0342  
Or e-mail newsletters to:  
lgmc.editor@windstream.net

# PICK & SHOVEL

THE *PICK & SHOVEL* IS THE OFFICIAL PUBLICATION OF THE LINCOLN GEM & MINERAL CLUB, INC., LINCOLN, NEBRASKA. **ARTICLES AND ITEMS APPEARING WITHIN MAY BE REPRODUCED IN OTHER CLUB BULLETINS, PROVIDED PROPER CREDIT IS GIVEN TO THE *PICK & SHOVEL* AND THE AUTHOR, AND THAT A REPRINT OF THE ARTICLE IS SENT TO THE EDITOR OF THE *PICK & SHOVEL*.**

## YOUR PICK & SHOVEL STAFF:

**PUBLISHER:** LINCOLN GEM & MINERAL CLUB, INC., P.O. BOX 5342, LINCOLN, NEBRASKA 68505-0342

**EDITOR:** SHARON MARBURGER, P.O. BOX 64, HICKMAN, NEBRASKA 68372, E-MAIL: LGMC.EDITOR@WINDSTREAM.NET

**CIRCULATION:** VERA LYMAN, 402-464-6089

**REPORTERS:** ALL MEMBERS ARE ENCOURAGED TO SUBMIT ARTICLES, POETRY, OR DRAWINGS.

