



PICK & SHOVEL

P.O. Box 5342, Lincoln, Nebraska 68505-0342, www.lincolngemmineralclub.org

Volume 55, Issue 6
February 2013

The purpose of this corporation shall be to study, promote an interest in, and disseminate knowledge of lapidary and various Earth Sciences including but not necessarily limited to Geology, Paleontology and Mineralogy. It shall be a particular purpose of the corporation to provide education in these fields to its members and the general public, especially to youth and student groups.



UPCOMING EVENTS

Regular monthly meetings are held at 7:00 p.m. at the Bethany Park Shelter House. Youth activities begin at 6:30 p.m. Summer activities will be announced as they are planned.

General Meeting

February 21, 2013

7:00 p.m.

Program:

“Journey to Xibalba, the Mayan Underworld” by Charles Wooldridge

Mineral Monkeys

February 21, 2013

6:30 p.m.

Lesson: Shop Safety

2013 Meeting Dates

Board

Wed., March 6
(at Vera Lyman's home)

Wed., April 3

Wed., May 1

Wed., September 4

Wed., October 2

Wed., November 6

General

Thurs., February 21

Thurs., March 21

Thurs., April 18

Thurs., May 16

Thurs., September 19

Thurs., October 17

Thurs., November 21

Sunday, December 1
(Christmas Party)

REGIONAL SHOWS

FEB. 23-24:

ROSEVILLE, MN. Anoka County Gem & Mineral Club's Winter Show; Har Mar Mall, 2100 Snelling; Sat. 10-6, Sun. Noon-5; CONTACT: Martha Miss, 651.459.0343, info@rock-biz.biz.

MAR. 9-10:

MACOMB, IL: Geodeland Earth Science Clubs' 33rd Annual Show; Student Union Ballroom, Western Illinois University, Murray St.; Sat. 10-6, Sun 10-5; Contact: George Coursey, 309.368.2947, courseyfarm@gmail.com.

DEALERS DEMONSTRATIONS CHILDREN'S ACTIVITIES

Lincoln Gem and Mineral Club, Inc. Proudly Presents Its 55th Annual Gem and Mineral Show

“Our Emerald Jubilee”

Saturday, April 6, 2013: 9:00 a.m. to 6:00 p.m.
Sunday, April 7, 2013: 10:00 a.m. to 5:00 p.m.

Lancaster Event Center
84th and Havelock, Lincoln, Nebraska



FREE natural emerald specimen to the first 2,000 paid admissions!

Held in conjunction with the Annual Conventions of the Midwest Federation of Mineralogical Societies and the Nebraska Association of Earth Science Clubs



Admission: \$5 per adult, children 11 and under free with paid adult. \$9 for a 2-day pass. Bring this coupon or can of food for the Lincoln Food Bank to receive \$1 off admission for each adult in party.

AGATES
GEM & JEWELRY-MAKING EQUIPMENT & SUPPLIES

FIELD TRIPS
PETRIIFIED WOOD
ROUGH & UNCUT GEMS
FUN

EDUCATIONAL PROGRAMS MINERALS GEMSTONES!

BOARD OF DIRECTORS

President

James Marburger, 402.792.2348
jm24122@windstream.net

1st Vice-President

Ed Dvorak, 402.946.3041
ed20649@windstream.net

2nd Vice-President

Aulden Stewart, 402.483.1044
mmstewart@inebraska.com

Treasurer

Vera Lyman, 402.464.6089

Secretary

Mark Awakuni-Swetland, 402.770.3521
mawakuni-swetland2@unl.edu

Board Member

Jayne Beer, 402.890.3307
JBeer60070@aol.com

Board Member

Robert Cropp, 402.465.8432
rowdyrcr@hotmail.com

Board Member

Richard Peterson, 402.489.2996
padr20@yahoo.com

Board Member

Charles Wooldridge, 402.416.3233
charles.wooldridge@nebraska.gov

SUNSHINE CORNER

February Birthdays:



ARTICLE VS. FEATURE

An article requires research and a bibliography.

A feature is written according to personal experience.

PRESIDENT'S MESSAGE

by James Marburger, President

The 2013 Mid-Winter Rock Swap was a success. Thanks to all who worked, attended, sold, and bought at this successful club event. Even the weather cooperated! As for the Swap, I brought home some great items and a touch of the flu. It has been 2 weeks of not much fun.



What is on tap for the Club? Wellllllllll, take a big breath. Our next club event will be Geology Day at Pioneers Park. Hope to see you all there. Plan now for the Science Fair on March 21st. Contact Susy McMahan if you would like to help; it is just a few hours that will bring more exposure for the club. Stay tuned for the Adopt-a-Highway clean-up in the spring; we have applied for the Highway 77 section south of Lincoln, between mile markers 47 and 49. Time and date will be announced for this new club project.

We need people to distribute show flyers. April 6th and 7th will be here before we know it. Pick up your stack of flyers at the February General Meeting (Feb. 21).

To aid in planning, all Club members are requested to fill out and submit the pre-registration form so we have an idea of who will be participating in events. Please plan to attend the banquet and partake in this great Midwest Federation Show and Convention; I know this will be best show with all of the things that are planned. The pre-registration form is on the club web site and can be found as an attachment to this newsletter.

I am getting cabin fever. I have been looking at a possible field trip to eastern Wyoming in the spring. Snow pack is low this year and could make for some early fun.

A trip to Colorado is also a possibility. Where would you like to go? I will try to come up with some local day trips, too. What are you interested in – fossils, minerals, cutting materials, or just a good time with nature? I look forward to your suggestions and feedback.

Our club is involved with the many facets of the hobby, and has many things going on. If you do not know what is going on, read the Pick & Shovel and check out the web site and Facebook page. Become a sharing and participating member. Do you want to host a Rock Party? February and March are still available. These are great fun and not a lot of work. Let me know if you would like to host the February party and we will get the word out. Share the fun.

REFRESHMENTS SCHEDULE

Feb. 21:	Mark Awakuni-Swetland & Charles Wooldridge	Soup/Bread Pie
Mar. 21:	Ed & Pat Dvorak, Jim Atkins	Bar Cookies
Apr. 18:	Roger & Mary Pittard, Vera Lyman	Cookies
May 16:	Linda Guenter, Richard Peterson	Cake

GENERAL MEETING MINUTES

January 26, 2013, Bethany Park Shelter House

Respectfully submitted by Mark Awakuni-Swetland, Secretary

Annual Mid-Winter Rock Swap

- Meeting called to order at 7:00 p.m. by President Jim Marburger following a pizza supper.
- Adult members present: 30; Mineral Monkeys present: 9.
- Minutes of December 2, 2012 as printed in the January 2013 P&S approved on motion by Wooly and 2nd by Ed Dvorak, AYE: unanimous, NAY: none.
- Treasurer's Report given by Vera Lyman, approved on motion by Roger Pittard, 2nd by Ed Dvorak, AYE: unanimous, NAY: none.

ANNOUNCEMENTS

- Jim acknowledged this being the Club's 58th founding anniversary with thanks to Vera Lyman for providing an anniversary cake.
- Thanks to all members who worked on the day's swap. Special mention made to Richard Peterson for organizing.
- Thanks to all those who helped Mary Pittard by volunteering to provide snacks for the remaining 2013 general meetings.
- Jim made a request for members willing to host the monthly rock parties.
- Ed Dvorak was acknowledged by the Club with a plaque and applause as the "Rock Hound of the Year, 2012" for always being on the spot to help with whatever was needed.
- Richard Peterson was acknowledged by the Club with a

plaque and applause for "Outstanding Service, 2011-2012" for his role as Club President.

- Jim pointed out the Feather River Rock Club's tumbled stone competition described in the January P&S. Sharon reported that MWF members had placed highly in the 2012 international competition.

OLD BUSINESS

- Richard reported on the Adopt-A-Highway proposal for the Club to clean up a two mile stretch of Highway 77 near Hickman Road. Supplies would be provided for a biennial clean up. After the first clean up the Club's name would be posted on both ends of the two mile stretch. Richard will examine the relevant stretch of road. The Club will adopt a two mile stretch on a motion by Wooly, 2nd by Ed Dvorak, AYE: unanimous, NAY: none.
- Reminder of the Club's Geology Day activity on February 10th at the Pioneers Park Nature Center, Chet Ager Building, beginning at 1:00 p.m. Set up time at noon. Scout groups are seeking the geology badge, and some home-schooled students want geology/rock education. Small displays, information, and activities for kids are needed. Past events have hosted one- to two-hundred visitors.
- The SCIENCE FAIR will be in March with the date TBA. Susy McMahan is heading up the Club's role.
- Jim proposed the Club think about creating an outreach coordinator. The Club regularly receives requests for programs and information from out of town schools, home-schools, scout groups, and assisted living homes. Anyone interested should talk to Jim.

(Continued on page 5)

J J & L Rocks & Minerals

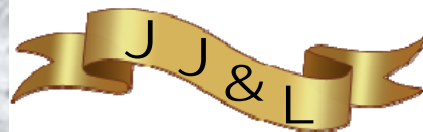
**P.O. Box 68
Hickman, NE 68372**

**330 Locust
Hickman, NE 68372**

**John Harrison
Lee Harrison
402.792.2337**

**James Marburger
Sharon Marburger
402.792.2348**

**jimandjohn@jjlrocksandminerals.com
www.jjlrocksandminerals.com
jjlrocksmin - Ebay Username**



**Proudly serving
the hobby for
36 years**

DECEMBER BOARD MEETING MINUTES

November 28, 2012, Gere Library (December meeting)
Respectfully submitted by Sharon Marburger, Secretary

- Meeting called to order at 6:30 p.m. by President Richard Peterson.
- Members Present: Richard Peterson, Ed Dvorak, Vera Lyman, Sharon Marburger, Jim Marburger, Ed Ridge, and Charles Wooldridge.
- Visitors: Mark Awakuni-Swetland, Jayne Beer, Pat Dvorak
- Minutes of the November meeting were distributed. Ed Dvorak moved to accept the minutes as corrected, second by Charles Wooldridge. Motion carried.
- The Treasurer's Report was distributed. Ed Dvorak moved to accept the report, second by Sharon Marburger. Motion carried.

ANNOUNCEMENTS:

- The December Rock Party will be held at 5:00 p.m. on the 15th at the Marburgers' residence. It will be a soup supper.

OLD BUSINESS:

- Discussion on what new, large, hanging signage should be purchased for the Show. It was suggested "Youth Activities", "Programs", and "Fluorescent Display" should be ordered.
- Reminder of the Mid-Winter Swap in January. It was noted that the flyers contained the wrong date. Sharon was asked to update the flyer and e-mail to Richard and Wooly.

NEW BUSINESS:

- New members approved by the Board. Victoria "Tori" Lee; Philip and Carolyn Ashmore; Jayden Eno (granddaughter to the Ashmores); and Bruce Sturges.

COMMITTEE REPORTS

- 2013 Show Report:
 - The non-selling demonstrator contracts have been mailed out.
 - Discussion of budget.
 - Mark Awakuni-Swetland will have some archeological material for display.
- Charles Wooldridge moved to adjourn the meeting at 7:44 p.m., second by Ed Ridge. Motion carried.

JANUARY BOARD MEETING MINUTES

January 2, 2013, Gere Library (January meeting)
Respectfully submitted by Vera Lyman and Sharon Marburger in the absence of Secretary Mark Awakuni-Swetland

- Meeting called to order at 6:35 p.m. by President Jim Marburger.
- Members Present: Jim Marburger, Ed Dvorak, Vera Lyman, Jayne Beer, Rowdy Cropp, Richard Peterson, and Charles Wooldridge.
- Visitors: Pat Dvorak, Sharon Marburger, Ed Ridge
- Minutes were not available. They will be produced at the February meeting.
- The Treasurer's Report was distributed. Ed Dvorak moved to accept the report, second by Richard Peterson. Motion carried.

OLD BUSINESS:

- Richard Peterson contacted the Adopt-a-Highway program. Should the club choose to participate, we can choose any 2-mile section of Highway 77 between miles 46 and 49 (this is between Princeton and the Hickman spur). The program requires a 2-year contract.
- Reminder of the Mid-Winter Swap. Last minute advertising locations were requested.

NEW BUSINESS:

- Geology Day will be February 10 at Pioneers Park, 1:00 p.m. to 4:00 p.m. with setup at noon.
- The Mineral Monkeys' assignment for January is on Facebook.
- The club has had requests from three different youth-oriented organizations, requesting rocks, gems, minerals, and lapidary presentations.
- Cub Scout den of 3 scouts.
- Classic Conversations: 45 students ranging in age from 4 to 11 years. Specifically they are interested in the parts of the earth and rocks. They would like to meet January 21, 22, or 23 at Calvary Church. Jayne Beer offered to work with Jim Marburger and Corey.
- Beatrice Public Library: June 18 and 25, and July 2, 9, and 16 are the dates they would like for us to present a talk on fossils, rock collecting, and/or lapidary. Youth

(Continued on page 5)

GENERAL MEETING MINUTES - CONT'D

(Continued from page 3)

NEW BUSINESS

- Sharon called for members to submit items for the P&S. These can include articles, features, poems, illustrations, etc.). Mark A-S asked if the P&S could print a description of article 'types', recalling the categories designated by the MWF.
- Sharon called for members to document any events or activities undertaken that relate to the Club and submit them for the All American Club Notebook. Any political activities such as lobbying for access to collecting sites, or other policy issues are welcome. Include a synopsis of presentations and activities along with copies of 'thank you' notes and any other documentation.
- Two field trips are planned in conjunction with the April Show. One will visit a quarry and road cuts south of Fairbury; the second will visit the Nemaha River. LGMC members are encouraged to go along to provide background information for our out-of-town visitors on the trips.
- Wooly reported that the Club library will need a new home. He will be retiring in the near future and will need to reclaim the space. The library occupies a 12x6 space including 2 file cabinets. The collection has been cataloged to some degree, some magazines have indexes, and much of the information is not available on-line.
- Jayne Beer, Program Coordinator, reported that Wooly will present the February Meeting program on his recent trip to Central America. Jayne is calling for more

programs and ideas.

APRIL SHOW

- Wooly reported that Bob Gruit is working on Special Features and Programs. He will also seek a mayoral proclamation.
- Wooly and Jim met with UNL's Morrill Hall for advertising and promotion. We will have four small billboards on major streets.
- Wooly will meet with Morrill Hall Director Mark Harris to do a Channel 5 advertising spot.
- Wooly repeated call for donations to the adult gem dig. Need Nebraska/regional gems and minerals to salt three yards of donated river gravel from General Landscaping.
- Ed Ridge is coordinating display space and display case needs. Members need to visit with him ASAP so floor plans at the Event Center can be drafted. Perhaps the P&S can post a description and pictures of the various sizes of display cases available.
- Sharon reported there will be a Friday night post-set-up Cracker Barrel reception for visiting clubs. Robert Swanson, from the USGS Nebraska Water Science Center, will speak.
- Vera will bring a pre-registration form to the February meeting for members to sign up for the Friday reception, breakfast, and banquet. Banquet cost is \$22, and will be an opportunity to socialize with other MWF members.
- The show will need volunteers to help with the membership booth and other show functions.

JANUARY BOARD MEETING MINUTES - CONT'D

(Continued from page 4)

presentations are at 2:00 p.m. and run 45 to 60 minutes; adult presentations begin at 7:00 p.m. The programs are attended by an average of 40 people.

COMMITTEE REPORTS

- 2013 Show Committee Report:
 - Major advertising will be on billboards, *Kids Speak* magazine, and *Nebraska Life* magazine.
 - A replacement dealer is needed. John Harrison will contact a stand-by dealer.
- Some small, faceted emeralds will be purchased for random distribution at the show, and for the juniors' gem dig.
- Roger Pittard is lengthening the supports for the Club Booth sign, to make it higher.
- Wooly shared a few of his and Jackie's experiences during their stay in Belize, Mexico.
- Ed Dvorak moved to adjourn the meeting at 7:40 p.m., second by Charles Wooldridge. Motion carried.

2013 MID-WINTER SWAP

by Sharon Marburger

The 2013 Mid-Winter Swap took place the afternoon of January 26 at the Bethany Park Shelter House. We had a great variety of swappers, 16 total. Reports following the Swap indicate everyone was happy with their sales and swaps of the day. Attendance was fabulous. I counted 37 adult members and 3 Mineral Monkeys in attendance! Wow! Did I mention fabulous? There were lots of members from other clubs and general public attending, also. We attribute the large attendance to great advertising. In addition to all the flyers handed out by everyone, a special thanks goes to Andrew Tiedje for posting the Swap on Facebook.

Photos courtesy of Jim & Sharon Marburger



Swap fun



Sharon Marburger and Vera & Ellie Lyman greet visitors, sell swapper bucks, and collect silent auction money.



Jayne Beer, Charles Meisinger, and Mark Awakuni-Swetland vying for the winning bid at the Silent Auction



A few of the Swappers and guests



LINCOLN CURIOS ROCK SHOP

6625 Burlington - Lincoln, NE 68507 [Park in alley]
(402) 310-3307

► SPECIALIZING IN ARIZONA PETRIFIED WOOD ◀

- ◆ Rough stones and fossils for the hobbyist
- ◆ Polished stone items for interior décor
- ◆ Great selection of tumble-polished stones
- ◆ Natural petrified wood for landscaping

Open Tuesday thru Saturday
 10 a.m. - 6 p.m.

CLUB DISPLAY CASES AND SHOW PRE-REGISTRATION

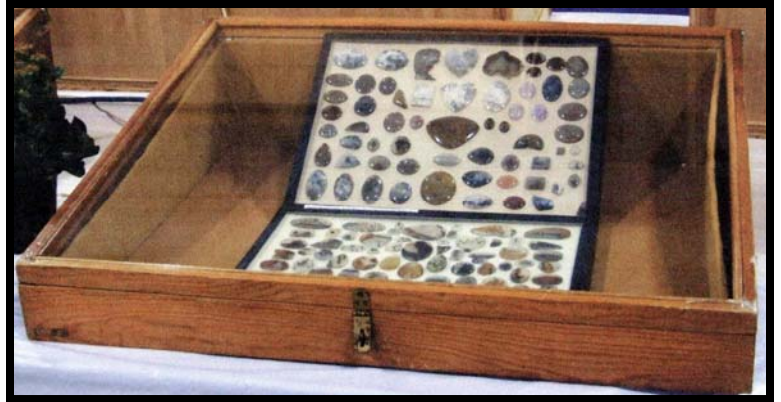
by Ed Ridge & Sharon Marburger

The club owns 39 display cases, available for use at the annual show. Of course, if you have your own display case(s), you are invited to use it/them. However, you must let Ed Ridge know your needs, whether you need to reserve a case or you need space to display using your own case.

The 39 cases are comprised of four different styles: the Frank Rule case, of which there are 3; the Wichita case, of which there are 5; the Gless case, of which there are 16; and the new case, of which there are 15.

The new cases are held in reserve this year, their primary use will be for Special Displays and Competitive Displays. If there are any remaining after their designated duty, those will be available for general use. The approximate size is 48" wide by 23" deep and 32" high.

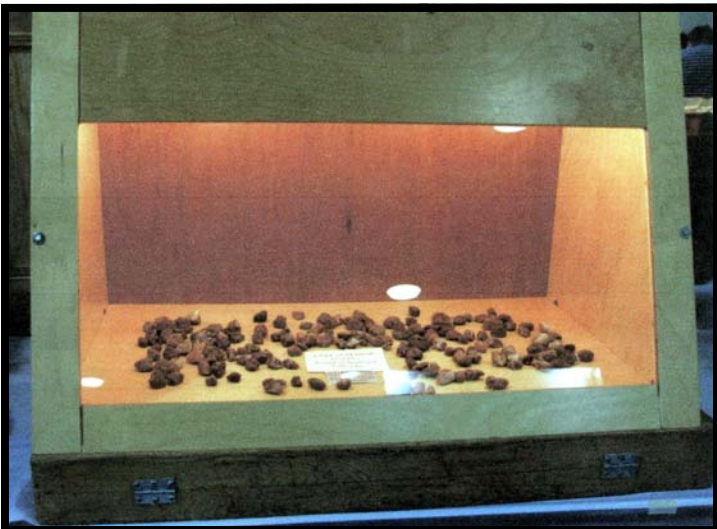
The Wichita case is 31" wide by 24" deep and 8" high.



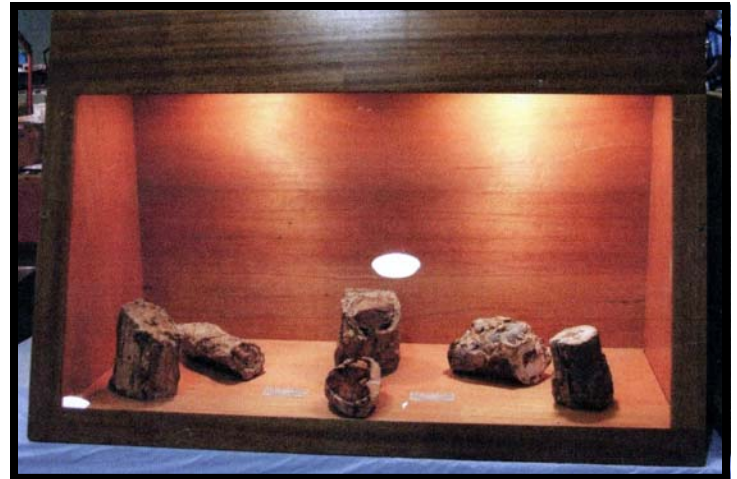
Like the Gless and new cases, the Frank Rule case is roughly 48" wide by 23" deep and 32" high.



The Gless case is very similar to the new case. It, too, is approximately 48" wide by 23" deep and 32" high.



Photos courtesy of Ed Ridge



Because this year's Show is also the Midwest Federation (MWF) Show and Convention, the Show Committee is requiring all club members to complete a pre-registration form. The form can be found as an enclosure to this newsletter. Completing the form will better enable the Committee to meet the needs of all participants.

All members and participants are encouraged to attend the Club and MWF functions. Plan to attend the Friday evening "Cracker Barrel" where you can hear the Director of the USGS Nebraska Water Science Center speak. Spend Saturday evening at the MWF Awards Banquet where you'll get good food and see your friends maybe win an award! And don't forget the Sunday morning breakfast for club members, dealers, and MWF visitors. The Editors' meeting will follow at 9 a.m. Don't forget to mark all the activities on your pre-registration form!

PIZZA SUPPER & GENERAL MEETING

by Sharon Marburger

Each year, Lincoln Gem & Mineral Club, Inc. celebrates the Club's anniversary by indulging in a pizza supper following a successful Mid-Winter Rock Swap. Each member wanting to participate pays a nominal fee to cover the cost of the supper. Everyone eats all they can hold of pizza, breadsticks, and salad and has good-natured conversation and teasing. In honor of the Club's anniversary, Vera Lyman usually bakes a cake. This year, in addition to celebrating the Club's anniversary, we also celebrated Brian Beer's birthday. The January General Meeting immediately follows the supper.



Photos courtesy of Sharon Marburger

Good food,
good fun



President Marburger bestows the honor of 2012 Rockhound of the Year upon 1st Vice President Ed Dvorak. Ed has been "Johnny on the Spot" and is always willing to help out. Congratulations Ed (and thank you)!



2013 Treasurer Vera Lyman, President Jim Marburger, and Secretary Mark Awakuni-Swetland



2011-12 President Richard Peterson receives his recognition plaque from 2013 President Jim Marburger. Thanks for your service, Pete!



MINERAL MONKEYS

Hi Monkeys!



by Susy McMahan, Co-leader

The Mineral Monkeys met after the Rock Swap, pizza, and cake on January 26 which, luckily for all, was NOT a school night. Nine kids attended, two of whom were visitors. We sorely missed our co-leader, Andrew Tiedje, who was suffering at home with kidney stones. Welcome to Chace Porter, our newest member. He has already assembled a large rock collection because his family lived in Wyoming and rock hunting was a family activity. Needless to say, he loves rocks!

Our topic in January was "Earth Resources". To make it interesting, and because we were short on time, we had several visual informational handouts from the MINERAL INFORMATION INSTITUTE, found at www.mii.org. We looked at minerals found in our bodies, food, and everyday items around us. By far, the most popular was the toothpaste handout. The kids each got a sample of copper and a penny, a nail and hematite, a slab on mica, a piece of galena, and a fluorite crystal to add to their collections and swap buys. Since fluoride in toothpaste is derived from fluorite, the crystal went into the mouths of a couple of the older kids who were then immediately sent to the rock handbooks to look up **toxic effects** which, fortunately, were none. As a reminder, once again, use the water bottle, don't put rocks in your mouth.

Judging from the trading and the conversation, fun was had by all!

Thanks to Nancy Akins and Jim Marburger for supplying rocks for the kids.


Our next endeavor is a big one. We will be studying "Lapidary Arts" and preparing to complete a lapidary project, which is a required portion of the activity. Jayne Beer and Judith Bay are generously offering their shop, The Jewelry Connection, for the actual lapidary work. In February we will study safety and learn about lapidary rocks to prepare for the shop activity! See you then!!

Photo courtesy of Sharon Marburger



Language Arts: Read "Ira Sleeps Over." Let students bring PJs & toothpaste.

Social Studies: What was used before toothpaste was "invented."



Science: What minerals are found in toothpaste. Read about or research fluorite. Compare fluoride content in various brands.

**Dig A Little Deeper
A Bright Smile**

From Toothpaste and Minerals

Toothpaste cleans your teeth and keeps them healthy.

The cleaning is done with abrasives (from rocks) that rub the plaque away. Abrasives are minerals like **silica**, **limestone**, **aluminum oxide** (also used in sandpaper), and various **phosphate** minerals.

Fluoride, used to reduce cavities, comes from a mineral called **fluorite**. It is sometimes changed into stannous fluoride (**tin fluoride**).

Most toothpaste is made white with **titanium dioxide** which comes from minerals called **rutile**, **ilmenite**, and **anatase**. Titanium dioxide also is used to make white paint.

The sparkles in some toothpaste come from **mica**, a mineral common in many rocks.

The toothbrush and tube holding your toothpaste are both made of plastics that come from **petroleum** (petrochemicals) and other minerals.

For more information about minerals in society, go to:
Mineral Information Institute, www.mii.org

Math: Survey class on brands used, chart or graph. **Health:** Discuss dental hygiene & special ingredients. **P.E.:** Stomp & squirt contest, use toothpaste & butcher paper.

ALAA NEWS (EXCERPTS PROVIDED BY TOM NOE)

It's 10 P.M.: Do You Know What Your Land Managers Are Doing? Part One

By Shirley Leeson, ALAA President

Signed into law January 1, 1970, the National Environmental Policy Act (NEPA) tells us that we must understand the impacts and effects of the choices we make. To understand those choices, a land-management agency has to do a study. It is supposed to be a scientific study with facts, data and logical analysis. The decision that the agency makes—for example, the US Forest Service (USFS) or the Bureau of Land Management (BLM)—must be based on the facts and conclusions of the analysis in that study.

NEPA simply tells us to look at what the environmental costs are, and make an informed decision.

Every project that has “on the ground” impacts requires one of the following three types of study:

Categorical Exclusion: no formal study required, that is, no public notice or participation required at all. The Forest Service uses Cat Ex for everyday chores like putting up signs, installing a culvert, grading and maintaining roads, etc.

Environmental Assessment: less complex and thorough, so it requires less public participation.

Environmental Impact Statement: the biggest, most complex and thorough study, and it requires full public participation.

You're the public. Do you know what the forest managers near you are planning? NOTE: You have to be specific to be productive. You can't just say "I don't like it." You have to mention a specific road and tell them why you use it and why you want it kept open.

—Excerpted from the April to June, 2012, ALAA Newsletter

ALAA is the lobbying arm of the American Federation, working on behalf of rockhounds to keep public lands open and accessible to all, including the elderly and handicapped.

[LGMC is a proud member of ALAA](#)

JANUARY ROCK PARTY

by Sharon Marburger

The Rock Party was hosted by Jayne Beer and Judith Bay at The Jewelry Connection on January 19. The theme was Mexican food. As always, there was plenty of food and it was all yummy!

Those in attendance were Judith Bay; Brian, Jayne, Kelly, and Corey Beer and baby Ja'ziel; Jim & Sharon Marburger; Mark Awakuni-Swetland; Vera Lyman; Susy McMahan, Ed Ridge; Greg & Betty Syslo; and Andrew Tiedje.

Judith worked on a silversmithing project, Susy a jewelry project, Andrew worked to remove a stone from a silver mounting, and Corey and Mark did lapidary. Everyone pitched in with specimen identification.

See the pictures on page 11.

Silversmithing classes

**The Jewelry Connection Ltd.
Indian Village Shopping Ctr.
13th & Arapahoe, Lincoln**

Tuesdays

January 8, 2013

thru

February 26, 2013

7:00 p.m. - 10:00 p.m.

Tuition: \$120 plus \$30 supply deposit

Contact:

Jayne Beer 402-890-3307

Judith Bay 402-423-7058

or e-mail

jbeer60070@aol.com

STANDING COMMITTEES CHAIRMEN

Audit	John Harrison James Marburger Ed Dvorak
Christmas Party	Edward Ridge
Education / Librarian	Charles Wooldridge Judy Cropp
Facebook	Andrew Tiedje
Field Trips	James Marburger
Geology Day Coordinator	Aulden Stewart
Grinding Party	Aulden Stewart
Historian	Sharon Marburger
Legislative Liaison	Robert Cropp
Membership Record	Edward Ridge
MWF Liaison	Vera Lyman
Programs	Jayne Beer/Judy Cropp
Property	James Marburger
Refreshments / Door Prizes	Mary Pittard
Scholarship	Vera Lyman
Show—2013	Charles Wooldridge
Swap—2013	Richard Peterson
Website	Jim Atkins
Youth Activities	Andrew Tiedje Susy McMahan Kay Jurgens

**ADVERTISING, SUBSCRIPTION,
AND MEMBERSHIP INFORMATION**

Advertising by rock / hobby business or interest is permitted with the approval of the Board of Directors. Contact the Editor with your proposed ad. The rate is set at \$20.00 per full page; \$10.00 per 1/2 page; \$5.00 per 1/4 page (minimum) per issue, paid in advance to the Club treasurer. Ads will be placed throughout the newsletter as space permits.

Subscription to the Pick & Shovel is \$15.00 per year for mailed copy.

Membership dues for the Lincoln Gem & Mineral Club are as follows:

Adults (age 16 and over) - \$15 per year or \$25 per couple (within the same household)

Juniors - \$2 per year (with a responsible adult)

All new memberships must be accompanied by a written application. Prospective members must gain Board approval and attend one regular meeting before being approved for membership.

ROCK PARTY PICTURES



NOMINATING COMMITTEE

Richard Peterson, Chairman

1 year: Robert Cropp
Judy Cropp

2 years: Brad Nielsen
Roger Pittard

3 years: Vera Lyman
Edward Ridge

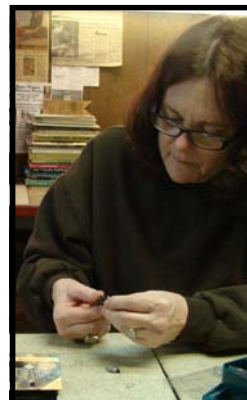
**LONG RANGE PLANNING &
BY-LAWS COMMITTEE**

Richard Peterson, Chairman

1 year: Charles Wooldridge
Sharon Marburger

2 years: Vera Lyman
John Harrison

3 years: Edward Ridge
Robert Cropp



Our lovely hostesses

Photos courtesy of Sharon Marburger

Mail Exchange Newsletters to:
Lincoln Gem & Mineral Club, Inc.
P.O. Box 5342
Lincoln, NE 68505-0342
Or e-mail newsletters to:
lgmc.editor@windstream.net



PICK & SHOVEL

THE *PICK & SHOVEL* IS THE OFFICIAL PUBLICATION OF THE LINCOLN GEM & MINERAL CLUB, INC., LINCOLN, NEBRASKA. **ARTICLES AND ITEMS APPEARING WITHIN MAY BE REPRODUCED IN OTHER CLUB BULLETINS, PROVIDED PROPER CREDIT IS GIVEN TO THE *PICK & SHOVEL* AND THE AUTHOR, AND THAT A REPRINT OF THE ARTICLE IS SENT TO THE EDITOR OF THE *PICK & SHOVEL*.**

YOUR PICK & SHOVEL STAFF:

PUBLISHER: LINCOLN GEM & MINERAL CLUB, INC., P.O. BOX 5342, LINCOLN, NEBRASKA 68505-0342

EDITOR: SHARON MARBURGER, P.O. BOX 64, HICKMAN, NEBRASKA 68372, E-MAIL: LGMC.EDITOR@WINDSTREAM.NET

CIRCULATION: VERA LYMAN, 402-464-6089

REPORTERS: ALL MEMBERS ARE ENCOURAGED TO SUBMIT ARTICLES, POETRY, OR DRAWINGS.

