



# PICK & SHOVEL

P.O. Box 5342, Lincoln, Nebraska 68505-0342, [www.lincolngemmineralclub.org](http://www.lincolngemmineralclub.org)

Volume 55, Issue 1  
September 2012

The purpose of this corporation shall be to study, promote an interest in, and disseminate knowledge of lapidary and various Earth Sciences including but not necessarily limited to Geology, Paleontology and Mineralogy. It shall be a particular purpose of the corporation to provide education in these fields to its members and the general public, especially to youth and student groups.



## UPCOMING EVENTS

### Calendar of 2012 Meeting Dates

<u>Board</u>	<u>General</u>
	Sep. 20
Oct. 3	Oct. 18
Nov. 1	Nov. 15
Nov. 28	Dec. 2

Regular monthly meetings are held at 7:00 p.m. at the Bethany Park Shelter House on the third Thursday of the month: Sep., Oct., Nov., Feb., Mar., Apr., and May; the first Sunday in December; and the fourth Saturday in January. Youth activities begin at 6:30 p.m. on the same dates. Summer meetings and other activities will be announced as they are planned.

For your convenience, dates are posted on this page.

### SUNSHINE CORNER

Happy New Year  
(Pick & Shovel)

Happy Birthday to:

Richard Peterson  
Vera Lyman  
Brad Nielsen

Some of our members placed in the Midwest Federation and American Federation Editors' Awards competition. Come to the September meeting to find out who.

### General Meeting

September 20  
7:00 p.m.

Program: Lake Superior Agates  
by Jim Null

### Mineral Moneys

September 20  
6:30 p.m.

Follow-up on summer assignment  
Begin earning the FRA Fossil Badge

## Nemaha River Field Trip with the North Central Kansas Club

### September 22

Meet 9:15 a.m. at  
Shirley's Place  
150 Miner St.  
DuBois, Nebraska

### September Rock Party Picnic in the Back Yard September 29, 2012 at 5:00 p.m.

Wooly plans to grill. Bring your picnic items and be ready to have a great time!

Bring your projects and portable equipment.

There will be a show committee meeting following the meal.

## BOARD OF DIRECTORS

### President

Richard Peterson, 402-489-2996  
padr20@yahoo.com

### 1<sup>st</sup> Vice-President

Ed Dvorak, 402-946-3041  
ed20649@windstream.net

### 2<sup>nd</sup> Vice-President

Aulden Stewart, 402-483-1044  
mmstewart@inebraska.com

### Treasurer

Vera Lyman, 402-464-6089

### Secretary

Sharon Marburger, 402-792-2348  
\*\*[lgmc.editor@windstream.net](mailto:lgmc.editor@windstream.net)\*\*  
\*\*new address\*\*

### Board Member

Robert Cropp, 402-465-8432  
rowdyrc@hotmail.com

### Board Member

James Marburger, 402-792-2348,  
jm24122@windstream.net

### Board Member

Edward Ridge, 402-477-8469

### Board Member

Charles Wooldridge, 402-416-3233  
charles.wooldridge@nebraska.gov



## PRESIDENT'S MESSAGE

by Richard Peterson

Our regular get-togethers at monthly meetings begin this month. I trust your summer was filled with adventures and memorable finds ... and that we made some new friends along the way.



As a river walker, this dry summer gave me the chance to explore areas where higher water levels had restricted my searching and inquisitive eyes. I am delighted to report that I found another museum quality specimen that will be donated to the State Museum. Before I turn it over to George Corner, I will have it on display at our general meeting and you can all have a guess.

As you know, at our general meeting this month we will be having a fund raiser to upgrade and replace our show signage. We will be raising funds thru silent and live auctions. Members are encouraged to bring items for the event. Items can include rocks, minerals, fossils, books, and baked goods such as fresh made pies, cookies, etc.

According to Sharon Marburger, there will also be a brief awards ceremony. Come see if you won an award in the Bulletin Editors competition.

Hope to see you there!

## REFRESHMENTS SCHEDULE

Sep. 20:	Marburgers/Messengers	Pie
Oct. 18:	Charles Wooldridge/AnneMarie Frierichs	
Nov. 20:	Al Stewart/Jim Atkins	

## MONTHLY ROCK PARTY SCHEDULE

September	September 29 @ 5:00 p.m.	Wooly's
October	AVAILABLE	
November	AVAILABLE	
December	December 15 @ 5:00 p.m.	Marburgers

**It's fun to host a party! Volunteer at the September meeting!**

Would you like to have some hobby fun? Consider hosting a monthly Rock Party. It doesn't matter where you hold it. All you have to do is set the date and time, provide place settings for the potluck, and have areas to work in and chairs or floor to sit on. **October and November** are still available. Let a Board Member know if you are interested in hosting. It is **EASY** and **FUN!**

## PASSING OF A FRIEND

by Sharon Marburger

It is with great sadness I report the passing of our good friend and co-hobbyist, Stella Thiessen.



Stella was a member of LGMC for many years. In recent years, she became more active by taking on the duties of leading our Mineral Monkeys (then later sharing those duties with co-leader Andrew Tiedje), running the Silent Auctions at our Annual Mid-winter Swaps and Annual Shows, helping out in the Youth Booth at the Annual Shows, and identifying and giving unofficial appraisals of antique jewelry.

Although she spent long periods of time receiving chemotherapy and didn't feel well, Stella attended most meetings. She was dedicated to passing her knowledge on to our youth.

I am told that Stella took classes with Judith Bay and Jayne Beer at The Jewelry Connection. She became a good silversmith through those classes.

Stella was awarded the adult Rockhound of the Year at the January 2012 club anniversary meeting for exceptional work in 2011.

Stella was modest and unassuming, but she was an inspiration to me and I shall miss her greatly.

# Cedar Valley Rocks & Minerals Society

## TWO-DAY

# Rock & Mineral Auction

Amana RV Park Event Center  
39 38th Ave., Amana, Iowa  
Saturday, September 15: 9-7  
Sunday, September 16: 10-4

## REGIONAL EVENTS

**7-9: FAIRFIELD, IA.** The Sac & Fox Lapidary Club's Annual Gem, Mineral, & Fossil Show; Fairfield Arts & Convention Center, Main & Briggs; Fri. 6-10, Sat. 9-6, Sun. 10-5; CONTACT: Betty Morris, 641.233.1300, [betmor74@iowatelecom.net](mailto:betmor74@iowatelecom.net).

**14-16: LINCOLN, MO.** Mozarkite Society of Lincoln, Inc.'s 53rd Annual Show & Swap; Lincoln City Park, Shelter House; Fri.-Sun. 8-5; CONTACT: Ted Bolich, 1201 S. 7th, Clinton, MO 64735, 660.890.4983.

**22-23: COLUMBUS, NE.** Loup Valley Gem & Mineral Society's Annual Show; Knights of Columbus Hall, 3115 6th St., CONTACT: Steve Hurt, 2405 13th St., 402.910.4576, [sphurt@yahoo.com](mailto:sphurt@yahoo.com).

**28-30: JOPLIN, MO.** Tri-State Gem & Mineral Society's Rock-A-Thon; CONTACT: Joplin Museum Complex, 504 Schifferdecker Ave., 417.623.1180, [jmc-cwiseman@sbc\\_global.net](mailto:jmc-cwiseman@sbc_global.net).

## Silversmithing classes

The Jewelry Connection Ltd.  
Indian Village Shopping Ctr.  
13th & Arapahoe, Lincoln

Tuesdays

August 14, 2012

thru

October 2, 2012

7:00 p.m. - 10:00 p.m.

Tuition: \$120 plus \$30 supply deposit

Contact:

Jayne Beer 402-890-3307

Judith Bay 402-423-7058

or e-mail

[jbeer60070@aol.com](mailto:jbeer60070@aol.com)

## GENERAL MEETING MINUTES

**The minutes were previously published in the June *Pick & Shovel*; they are reproduced here for your convenience. Please review and note any changes or corrections at the next general meeting.**

### LGMC General Meeting, May 17, 2012, Bethany Park Shelter House

Respectfully submitted by Sharon Marburger, Secretary

- Call to Order - 7:01 p.m.
  - Adult members present - 26
  - Mineral Monkeys present - 3
  - Visitors present - 4
  - Motion by Jim Marburger to accept the minutes as published in the *Pick & Shovel*, second by Ed Dvorak, motion carried.
  - Motion by Charles Wooldridge to accept the Treasurer's report as read by Vera Lyman, second by Brad Nielsen, motion carried.
3. The proposed 2013 Show Budget was presented. Jim Marburger moved to accept the proposed budget, second by Rowdy Cropp, motion carried.
  4. Wooly called for a Show Committee meeting to convene following the program. He invited all club members to be a part of the committee.
  5. Motion by John Harrison to adjourn the meeting to program, second by Ed Dvorak. Meeting adjourned at 7:21 p.m.

### OLD BUSINESS

1. The May Rock Party will be held Saturday at the Marburger residence. 5:00 p.m. Menu starts with pulled pork. Plan to sort, oil, and package emeralds for 2013 Show.
2. The June Rock Party will be held on the 16th at the Wooldridge residence. 6:00 p.m. This will be a picnic supper. Bring projects to work on.
3. Grinding Party will be July 8 at the Pioneer Park Nature Center, Chet Ager Building. 1:00 - 4:00 p.m.
4. The July Rock Party will be hosted by the Pittards. 2:00 p.m., cooking starts at 4:00. There will be a jam session after eating. Bring your projects and equipment.
5. The August Rock Party will be held at The Jewelry Connection. Watch the *Pick & Shovel* for date and time.

### NEW BUSINESS

1. The Loup Valley Gem & Mineral Club's Swap will be held June 24 in Columbus. (See page 2 for details)
2. The Loup Valley club's show will be September 22 and 23 in Columbus.

### PROGRAM

Mineral Monkey Ian Williams wrote a report on the Nebraska State Fossil. He read his report to those present and explained that chickens discovered it. (See page 8 for report.)

The program was a video of Cash & Treasures: Petrified Wood. Kirsten goes to Ashwood, Oregon and Sweet Home, Oregon to collect petrified wood. As always, she exudes a lot of excitement and is very entertaining.

## MWF FALL MEETING

The MWF fall meeting will be held at the Springfield, Illinois Show on October 6-7, 2012. The meeting is open to anyone who would like to attend. Find out what is happening in the Federation and attend a fabulous show while you are at it!

Lincoln Orbit Earth Science Society's Annual Show  
 Illinois Bldg., Illinois State Fairgrounds  
 Sat. 10:00-6:00  
 Sun. 10:00-5:00  
 Contact: John Washburn, 107 Deer Creek Rd,  
 Rochester, IL 62563, 217-498-7713,  
 jrwashburn3@att.net

## BOARD MEETING MINUTES

### LGMC Board Meeting, May 2, 2012, Gere Library (May meeting)

Respectfully submitted by Sharon Marburger, Secretary

Meeting called to order at 6:31 p.m.

Members Present: Richard Peterson, Ed Dvorak, Vera Lyman, Sharon Marburger, Jim Marburger, Ed Ridge, Charles Wooldridge.

Visitor: Pat Dvorak

Minutes of the April meeting were distributed. Jim Marburger moved to accept the minutes, Ed Dvorak seconded. Motion carried.

The Treasurer's Report was distributed. Ed Dvorak moved to accept the report, second by Jim Marburger. Motion carried.

#### OLD BUSINESS:

- Richard Peterson asked if advertising information from previous years could be provided. This includes all contact information.

#### NEW BUSINESS:

- Material has been purchased by individuals and donated to the youth group for the gem dig.
- Richard has asked that we hold a silent auction at the September meeting. Proceeds will be used to update and replace show signage. The plan is to replace all handwritten signage with professional-

looking signs for the various locations of interest at the Show. Items for auction will be rocks, mineral specimens, snacks, pies, etc.

- Cost and laws regarding small signs to be placed on private property will be checked into.
- Richard proposed we request members to bring one "good" specimen to each meeting for use at the 2013 Show silent auction.
- Jim Marburger moved to accept the new membership application, second by Charles Wooldridge. Motion carried.
- Charles Wooldridge moved to bestow lifetime memberships to Bill and Shirley Rockel, second by Ed Dvorak. Motion carried.
- A Show Committee meeting is scheduled for May 3 at 6:30 p.m. at Wooly's house.

Ed Dvorak moved to adjourn the meeting, second by Jim Marburger. Motion carried. Meeting adjourned at 7:29 p.m.

## J J & L Rocks & Minerals

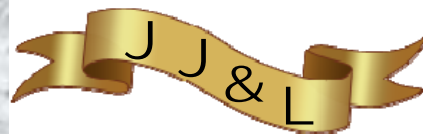
P.O. Box 68  
Hickman, NE 68372

330 Locust  
Hickman, NE 68372

John Harrison  
Lee Harrison  
402.792.2337

James Marburger  
Sharon Marburger  
402.792.2348

jimandjohn@jjlrocksandminerals.com  
www.jjlrocksandminerals.com  
jjlrocksmin - Ebay Username



Proudly serving  
the hobby for  
36 years

# Non-Faceting Lapidary

Learn the art and techniques of cutting and polishing stones. Participants supply their own stones. Beginners will learn basic instruction during the first class with materials provided. You will receive information regarding sources for purchasing future stones.

**Saturdays  
Oct. 13-Nov. 17, 2012  
10 a.m.-1 p.m.**

This is a partnership event with SCC and the Lincoln Gem & Mineral Society.

**Class Location:** Auld Recreation Center, 3140 Sumner, Lincoln

**Cost:** \$59 per person

Complete the registration form below and send with payment to:  
SCC Continuing Education Center, c/o Nancy Holman  
301 S. 68th St. Place, Lincoln, NE 68510

## REGISTRATION FORM - NON-CREDIT COURSE

**SE** Southeast community college

Complete this form with payment information and send via FAX or mail to:

**SCC-Continuing Education Center  
301 S. 68th St. Place, Lincoln, NE 68510  
FAX: 402-437-2703**

The College requires a student's Social Security number as a condition for enrollment. A student's Social Security number information constitutes an "educational record" under the Family Educational Rights and Privacy Act (FERPA). The College will be privileged to disclose that information only with the consent of the student or in those very limited circumstances when consent is not required by FERPA.

**PLEASE PRINT**

### 2012 QUARTER

<input type="checkbox"/> SUMMER	<input type="checkbox"/> WINTER
<input checked="" type="checkbox"/> FALL	<input type="checkbox"/> SPRING

Social Security Number		Name: Last		First	Middle Initial	Email address	
Residence Mailing Address				City	State	Zip	County #
Birth Date	Gender: <input type="checkbox"/> Male <input type="checkbox"/> Female	Ethnicity (select one): <input type="checkbox"/> Hispanic or Latino <input type="checkbox"/> Not Hispanic or Latino	Race (select one or more): <input type="checkbox"/> White <input type="checkbox"/> Native Hawaiian or Other Pacific Islander <input type="checkbox"/> American Indian or Alaska Native		<input type="checkbox"/> Asian <input type="checkbox"/> Black or African American	<input type="checkbox"/> Resident of Nebraska <input type="checkbox"/> Non-Resident of Nebraska	Home Phone
						<input type="checkbox"/> Cell	<input type="checkbox"/> Business Phone

## Non-Faceting Lapidary

Saturdays, Oct. 13-Nov. 17, 2012 • 10 a.m.-1 p.m.  
Auld Recreation Center, 3140 Sumner, Lincoln, NE  
\$59 • LLLX-1126-CEFA

### SIGNATURE

Check (must be included)  Cash (must be included)

V Code \_\_\_\_\_

Name as it appears on card: \_\_\_\_\_

Exp. Date \_\_\_\_\_ Credit card # \_\_\_\_\_

Billing agency (INCLUDE LETTER OF AUTHORIZATION ON COMPANY LETTERHEAD)

For the protection of your personal credit card information, do not email this form to SCC. If faxing, only use the fax number listed or verify with SCC before using another SCC fax number.

Would you like a receipt mailed to you?  
 Yes  No

<b>TOTAL DUE</b>	
------------------	--

FOR OFFICE USE ONLY	
DE	ID#

Submission of this form indicates that I understand: 1) that my registration is complete and that I am accountable for the tuition and fees and subject to a grade in the courses listed; 2) that should I officially drop, cancel, or withdraw, any refund in tuition will be determined by the date I submit my request to Continuing Education; 3) that failure to attend a course does not constitute an official drop/withdrawal; 4) the personal information contained herein is correct as shown; and 5) any changes in SSN, legal name, address, residency, etc. must follow the College procedures in the Student Handbook and College Catalog. It is the policy of SCC to provide equal opportunity and nondiscrimination in all admission, attendance, and employment matters to all persons without regard to race, color, religion, sex, age, marital status, national origin, ethnicity, veteran status, sexual orientation, disability, or other factors prohibited by law or College policy. Inquiries concerning the application of SCC's policies on equal opportunity and nondiscrimination should be directed to the Vice President for Access/Equity/Diversity, SCC Area Office, 301 S. 68th Street Place, Lincoln, NE 68510, 402-323-3412, FAX 402-323-3420, or jsoto@southeast.edu.

**BENCH TIPS BY BRAD SMITH**

CLEANING SOLDER OUT OF A BEZEL

Sometimes when you solder a bezel to a base plate you end up with excess solder that needs to be removed before setting the stone. My choice of tool for this is called an "Inverse Cone" bur used in a rotary tool or flexshaft. It cuts on both the bottom and the side and is shaped so that there's less chance of cutting into the bezel wall than if you used the more common cylinder bur shape. The 2 mm size is useful for most any bezel.



FAUX SILVER

I'm fortunate to live in a big city that has frequent jewelry shows where I can buy supplies.

But there are certain risks in buying at one of these events or from some of the online venues. Recently, a friend bought a package of 12 mm Sterling jump rings that became copper plated in the pickle. There was no sign of any steel contamination, so I tested them with a magnet to discover they were just plated steel.

I ran into a similar misrepresentation a couple years ago. I bought some "genuine" turquoise beads that I needed for 10mm cabs only to find they were a white magnestie that had been dyed.

Best solution is to carry a couple simple tools with you when you go to buy stones or findings. I usually carry a ten power loupe and a small vernier caliper to measure things. From now on, I'll also be carrying a small, strong magnet with me to test the findings.

Dealers are not necessarily the problem. Many have no idea their metals are plated. They were duped by their supplier. Regardless of who's to blame, I think it's worth reporting any problems you find to both the dealer and to the show promoter.

More BenchTips by Brad Smith are at [groups.yahoo.com/group/BenchTips/](http://groups.yahoo.com/group/BenchTips/) or [facebook.com/BenchTips](http://facebook.com/BenchTips)

**SHOW COMMITTEE MEETING #5**

by Sharon Marburger

Show Committee Meeting #5 was called to order after the potluck supper at the August Rock Party hosted by The Jewelry Connection.

Chairman Wooly reported his contact with the emerald guy, Sam Redman. Mr. Redman's fee for our event will be \$1,500. He will coordinate advertising and handle all interviews prior to the show.

Word from Jim Null is that Scott Wolters will not be able to participate in 2013 due to a previous engagement.

Programs: Jim Null's Lake Superior Agate PowerPoint. Wooly will talk with Doug Moore to see if he would be willing to present an agate program.

Special Displays: Jim Marburger is to contact the Oral Robert's Museum in Oklahoma; Loomis Truesdale's mozarkite cabochon display is lined up; Sharon will contact the Kenfield Museum.

Wooly asks that we all collect extra Nebraska material to salt the parking lot rock pile field trip.

*(Continued on page 8)*

**2013 SHOW COMMITTEE**

- Chairman:..... Charles Wooldridge
- Breakfast: ..... Vera Lyman
- Dealers: ..... Charles Wooldridge
- Demonstrators:.....Richard Peterson
- Displays: ..... Ed Ridge
- Event Center Liaison..... Vera Lyman
- Finance & Ticket Sales: ..... Vera Lyman, Jim Atkins
- Floor Chairman: .....John Harrison
- Forms ..... Sharon Marburger
- Host Hotel ..... Sharon Marburger
- LGMC Club Booth: .....
- MWF Coordination..... Sharon Marburger, Vera Lyman
- Plants:..... Ed Ridge
- Pre-Registration .....Richard Peterson
- Printed Program: ..... Sharon Marburger
- Programs & Speakers:.....
- Publicity & Promotion: .....Jim Marburger, Wooly
- Ribbons & Recognitions: ..... Al & Marilyn Stewart
- Security: ..... Vera Lyman
- Silent Auction: ..... Andrew Tiedje
- Special Features: .....
- Web Master:..... Jim Atkins
- Youth Activities:..... Kay Jurgens

## AUGUST ROCK PARTY

By Sharon Marburger

The Rock Party was hosted by Judith Bay and Jayne Beer at The Jewelry Connection on August 11 at 5:00 p.m. The food theme was Mexican: tacos, burritos, frijoles, and an assortment of other items. As usual, it was all yummy! In honor of Rowdy Cropp's upcoming birthday, Judy brought cake.

Photos by  
Jim & Sharon Marburger



Those in attendance were Judith Bay; Brian, Jayne, and Corey Beer (and the new grandson also made an appearance); Richard Peterson; Vera Lyman; Jim & Sharon Marburger; Rowdy & Judy Cropp; Ed Ridge; Andrew Tiedje; Linda Guenter; Bob & Pat Gritit; and Wooly & Jackie.

A visitor dropped by to have some emerald specimens appraised. We invited him to break bread with us, but he declined.

A short show committee meeting was held after eating. See the notes of the meeting on page 6 of this P&S.

Corey Beer had several finished stones that he shared with us. He does amazing work. Andrew Tiedje worked on a cabochon.



### MEETING #5 - CONTINUED

*(Continued from page 7)*

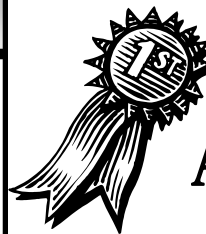
Bring specimens to the meetings; Wooly will gather and store until the Show.

Need volunteers to man the Club Booth. Bob & Pat Gritit were interested in helping out in this capacity.

Sharon asked about possibly having paid ads in the Show Program book.

Need release form for anyone participating in the field trips. Sharon will send to Bob Gritit for review.

Wooly asked Andrew Tiedje to chair the Show's Silent Auction committee.



## September Meeting AWARDS CEREMONY

**It is time once again for  
NOMINATIONS!  
Say "yes" when the  
committee calls on you!**

# MINERAL MONKEYS

by Sharon Marburger



## Hi Monkeys!

The words this month are part of your summer assignment. They are taken from the AFMS Code of Ethics. How many can you find?

Have you memorized the Code?

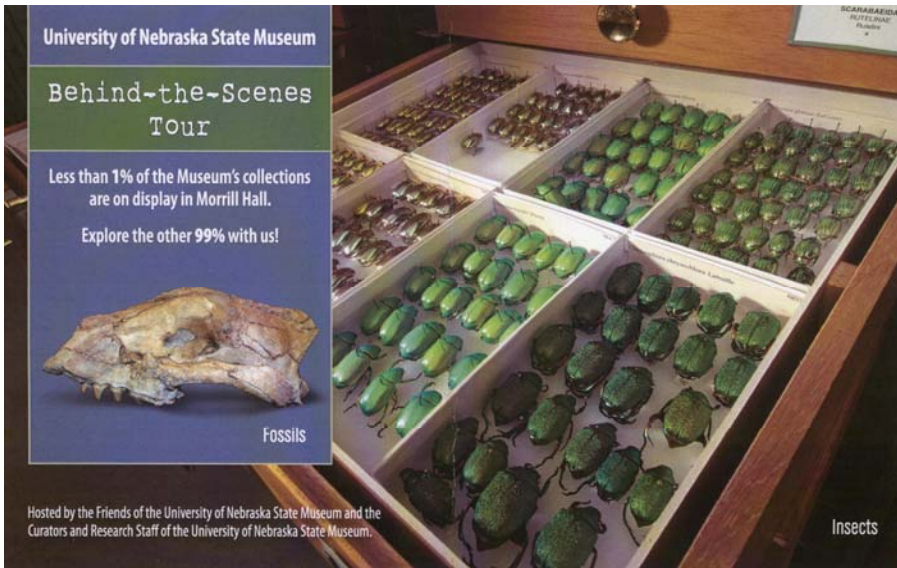
- |               |            |            |             |
|---------------|------------|------------|-------------|
| BENEFIT       | EDUCATION  | HELP       | PERMISSION  |
| BOUNDARIES    | EXCAVATION | HERITAGE   | PROTECT     |
| CONSERVATION  | FIREARMS   | LAWS       | REGULATIONS |
| CONTAMINATION | FIRES      | LITTER     | RESOURCES   |
| COOPERATE     | GATES      | MODERATION | RESPECT     |
| DAMAGE        | GOLDENRULE | OBSERVE    | SAFETY      |



W	L	I	T	T	E	R	N	M	L	S	M	R	T	M	L	J	M	T
T	T	I	T	C	T	N	O	I	T	A	N	I	M	A	T	N	O	C
P	E	X	C	A	V	A	T	I	O	N	O	D	P	R	V	N	A	E
O	L	L	E	C	X	W	A	E	C	L	S	M	C	X	W	A	E	P
B	R	V	T	O	W	T	L	W	B	R	E	S	O	U	R	C	E	S
S	X	W	O	O	D	P	R	V	A	X	R	Y	O	D	P	R	V	E
E	B	P	R	R	E	G	U	L	A	T	I	O	N	S	O	F	T	R
R	O	M	P	G	L	O	C	P	R	J	F	N	N	S	O	I	P	R
V	U	W	Y	O	U	N	O	M	P	X	W	Y	O	D	N	R	P	R
E	N	P	R	V	R	A	O	N	O	I	S	S	I	M	R	E	P	N
A	D	R	V	R	N	M	P	X	W	P	R	V	T	V	M	A	W	D
M	A	O	A	L	E	O	E	S	L	L	A	M	A	A	R	R	P	A
H	R	D	M	O	D	E	R	A	T	I	O	N	V	M	C	M	R	M
L	I	D	P	T	L	W	A	F	O	D	I	R	R	H	O	S	R	A
N	E	D	P	R	O	R	T	E	R	B	E	N	E	F	I	T	F	G
A	S	E	T	A	G	S	E	T	N	G	S	O	S	W	A	L	F	E
O	I	X	W	Y	O	D	X	Y	Y	O	D	N	N	M	P	C	C	B
E	G	A	T	I	R	E	H	P	R	V	R	A	O	E	H	E	L	P
O	D	P	R	V	R	V	P	N	O	I	T	A	C	U	D	E	O	R



Puzzle manually created by Sharon Marburger.



University of Nebraska State Museum

Behind-the-Scenes Tour

Less than 1% of the Museum's collections are on display in Morrill Hall. Explore the other 99% with us!



Fossils

Hosted by the Friends of the University of Nebraska State Museum and the Curators and Research Staff of the University of Nebraska State Museum.

One of the benefits of being a part of LGMC is your Friends of the Museum membership. Take both of your membership cards with you and participate in this fun tour.

Behind-the-Scenes Tour

Friday, September 21, 2012

7:00-9:00 p.m.

Nebraska Hall, West Wing, 4th & 5th Floors UNL City Campus

This exclusive tour of our internationally-recognized collections is FREE with your Friends of the Museum membership. Meet the curators and research staff and learn what goes on behind-the-scenes at the Museum.

Enter Nebraska Hall at the Main Entrance on 16th & W Streets.

Free parking will be available in Parking Lot "A" (also known as the "Boathouse" Lot) north of Nebraska Hall. Attendants will distribute permits.

RSVP by Sept. 15 to Dana Ludvik at (402) 472-3779 or dludvik2@unl.edu.



Plants



Cultural Objects

Birds & Mammals



Parasites

Please present this card for entry to the Friends of the State Museum Behind-the-Scenes Tour on Sept. 21. If you are not already a Friends member, please consider joining in order to enjoy future events like this one! Go to: <http://friendsofthemuseum.org/>

The University of Nebraska-Lincoln is an equal opportunity educator and employer with a comprehensive plan for diversity.



UNIVERSITY OF  
**Nebraska**  
Lincoln

**LINCOLN CURIOS ROCK SHOP**

6625 Burlington - Lincoln, NE 68507 [Park in alley]

(402) 310-3307

► **SPECIALIZING IN ARIZONA PETRIFIED WOOD** ◀

- ◆ Rough stones and fossils for the hobbyist
- ◆ Polished stone items for interior décor
- ◆ Great selection of tumble-polished stones
- ◆ Natural petrified wood for landscaping

Open Tuesday thru Saturday  
10 a.m. - 6 p.m.

**STANDING COMMITTEES CHAIRMEN**

Audit	John Harrison
	James Marburger
	Ed Dvorak
Christmas Party	Edward Ridge
Education / Librarian	Charles Wooldridge
	Judy Cropp
Facebook	Andrew Tiedje
Field Trips	James Marburger
Geology Day Coordinator	Aulden Stewart
Grinding Party	Aulden Stewart
Historian	Sharon Marburger
Legislative Liaison	Robert Cropp
Membership Record	Edward Ridge
MWF Liaison	Vera Lyman
Programs	Jayne Beer/Judy Cropp
Property	James Marburger
Refreshments / Door Prizes	Mary Pittard
Scholarship	Vera Lyman
Show—2013	Charles Wooldridge
Swap—2013	Richard Peterson
Website	Jim Atkins
Youth Activities	Andrew Tiedje
	Kay Jurgens

**ADVERTISING, SUBSCRIPTION,  
AND MEMBERSHIP INFORMATION**

Advertising by rock / hobby business or interest is permitted with the approval of the Board of Directors. Contact the Editor with your proposed ad. The rate is set at \$20.00 per full page; \$10.00 per 1/2 page; \$5.00 per 1/4 page (minimum) per issue, paid in advance to the Club treasurer. Ads will be placed throughout the newsletter as space permits.

Subscription to the Pick & Shovel is \$15.00 per year for mailed copy.

Membership dues for the Lincoln Gem & Mineral Club are as follows:

- Adults (age 16 and over) - \$15 per year or \$25 per couple (within the same household)
- Juniors - \$2 per year (with a responsible adult)

All new memberships must be accompanied by a written application. Prospective members must gain Board approval and attend one regular meeting before being approved for membership.

**LONG RANGE PLANNING &  
BY-LAWS COMMITTEE**

<b>1 year</b>	Edward Ridge
	Robert Cropp
<b>2 years</b>	Charles Wooldridge
	Sharon Marburger
<b>3 years</b>	Vera Lyman
	John Harrison

**NOMINATING COMMITTEE**

3 years	Brad Nielsen
	Roger Pittard
2 years	Robert Cropp
	Judy Cropp
1 year	Vera Lyman
	Edward Ridge

W	L	I	T	T	E	R	N	M	L	S	M	R	T	M	L	J	M	T
T	T	I	T	C	T	N	O	I	T	A	N	I	M	A	T	N	O	C
P	E	X	C	A	V	A	T	I	O	N	O	D	P	R	V	N	A	E
O	L	L	E	C	X	W	A	E	C	L	S	M	C	X	W	A	E	P
B	R	V	T	O	W	T	L	W	B	R	E	S	O	U	R	C	E	S
S	X	W	O	O	D	P	R	V	A	X	R	Y	O	D	P	R	V	E
E	B	P	R	R	E	G	U	L	A	T	I	O	N	S	O	F	T	R
R	O	M	P	G	L	O	C	P	R	J	F	N	N	S	O	I	P	R
V	U	W	Y	O	U	N	O	M	P	X	W	Y	O	D	N	R	P	R
E	N	P	R	V	R	A	O	N	O	I	S	S	I	M	R	E	P	N
A	D	R	V	R	N	M	P	X	W	P	R	V	T	V	M	A	W	D
M	A	O	A	L	E	O	E	S	L	L	A	M	A	A	R	R	P	A
H	R	D	M	O	D	E	R	A	T	I	O	N	V	M	C	M	R	M
L	I	D	P	T	L	W	A	F	O	D	I	R	R	H	O	S	R	A
N	E	D	P	R	O	R	T	E	R	B	E	N	E	F	I	T	F	G
A	S	E	T	A	G	S	E	T	N	G	S	O	S	W	A	L	F	E
O	I	X	W	Y	O	D	X	Y	Y	O	D	N	N	M	P	C	C	B
E	G	A	T	I	R	E	H	P	R	V	R	A	O	E	H	E	L	P
O	D	P	R	V	R	V	P	N	O	I	T	A	C	U	D	E	O	R

*Answers to Mineral Monkeys' puzzle*

Mail Exchange Newsletters to:  
Lincoln Gem & Mineral Club, Inc.  
P.O. Box 5342  
Lincoln, NE 68505-0342  
Or e-mail newsletters to:  
lgmc.editor@windstream.net

# PICK & SHOVEL

THE *PICK & SHOVEL* IS THE OFFICIAL PUBLICATION OF THE LINCOLN GEM & MINERAL CLUB, INC., LINCOLN, NEBRASKA. **ARTICLES AND ITEMS APPEARING WITHIN MAY BE REPRODUCED IN OTHER CLUB BULLETINS, PROVIDED PROPER CREDIT IS GIVEN TO THE *PICK & SHOVEL* AND THE AUTHOR, AND THAT A REPRINT OF THE ARTICLE IS SENT TO THE EDITOR OF THE *PICK & SHOVEL*.**

## YOUR PICK & SHOVEL STAFF:

**PUBLISHER:** LINCOLN GEM & MINERAL CLUB, INC.,  
P.O. BOX 5342, LINCOLN, NEBRASKA  
68505-0342

**EDITOR:** SHARON MARBURGER, P.O. BOX 64,  
HICKMAN, NEBRASKA 68372, E-MAIL:  
LGMCSecretary@YAHOO.COM

**CIRCULATION:** VERA LYMAN, 402-464-6089

**REPORTERS:** ALL MEMBERS ARE ENCOURAGED TO  
SUBMIT ARTICLES, POETRY, OR DRAWINGS.

A SPECIAL THANKS TO THIS MONTH'S  
CONTRIBUTORS: JUDY CROPP, ROWDY CROPP,  
RICHARD PETERSON, BRAD SMITH.

