



# PICK & SHOVEL

P.O. Box 5342, Lincoln, Nebraska 68505-0342, [www.lincolngemmineralclub.org](http://www.lincolngemmineralclub.org)

Volume 54, Issue 10  
June 2012



The purpose of this corporation shall be to study, promote an interest in, and disseminate knowledge of lapidary and various Earth Sciences including but not necessarily limited to Geology, Paleontology and Mineralogy. It shall be a particular purpose of the corporation to provide education in these fields to its members and the general public, especially to youth and student groups.



## UPCOMING EVENTS

Regular monthly meetings are held at 7:00 p.m. at the Bethany Park Shelter House on the third Thursday of the month: Sep., Oct., Nov., Feb., Mar., Apr., and May; the first Sunday in December; and the fourth Saturday in January. Youth activities begin at 6:30 p.m. on the same dates. Summer meetings and other activities will be announced as they are planned.

### Calendar of 2012 Meeting Dates

<u>Board</u>	<u>General</u>
Sep. 5	Sep. 20
Oct. 3	Oct. 18
Nov. 1	Nov. 15
Nov. 28	Dec. 2

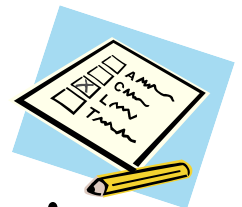
Summer Break.  
See you in September!

### June Rock Party

Wooly's Residence  
June 16 at 6:00 p.m.  
See announcement on page 5.

### Special Activities

Grinding Party Jul. 8



## 2013 Show Silent Auction

Bring a nice specimen to each meeting  
between now and April  
for the 2013 Show Silent Auction.  
Let's have an AWESOME event!

### SUNSHINE CORNER

Have you heard?  
Kathleen Medcalf and Andrew Tiedje are expecting a baby in mid-September. If you would like to give them a gift, check out their registry at:

[http://www.walmart.com/giftregistry?povid=cat14503-env172199-module101210-ILink1\\_GR](http://www.walmart.com/giftregistry?povid=cat14503-env172199-module101210-ILink1_GR)

## BOARD OF DIRECTORS

### President

Richard Peterson, 402-489-2996  
padr20@yahoo.com

### 1<sup>st</sup> Vice-President

Ed Dvorak, 402-946-3041  
ed20649@windstream.net

### 2<sup>nd</sup> Vice-President

Aulden Stewart, 402-483-1044  
mmstewart@inebraska.com

### Treasurer

Vera Lyman, 402-464-6089

### Secretary

Sharon Marburger, 402-792-2348  
lgmsecretary@yahoo.com

### Board Member

Robert Cropp, 402-465-8432  
rowdycr@hotmail.com

### Board Member

James Marburger, 402-792-2348,  
jm24122@windstream.net

### Board Member

Edward Ridge, 402-477-8469

### Board Member

Charles Wooldridge, 402-416-3233  
charles.wooldridge@nebraska.gov

## PRESIDENT'S MESSAGE

by Richard Peterson

With Memorial Day just past, I know all of us took the time to visit area cemeteries to remember relatives, past friends and service members. But now with June upon us, most of us will be out and about, looking for what we love and enjoying the great outdoors. Let's make part of our summer to support our local rock and mineral events.



One event in June is on Sunday the 24th. The Loup Valley Gem & Mineral Society will hold its SWAP from 9-5 at the Isaac Walton Cabin, junction of highways 8 & 30 in Columbus, Nebraska. Get out and enjoy some quality time with your rockhound friends.

Hope to see you there.

## REFRESHMENTS SCHEDULE

<b>Sep. 20:</b>	<b>Marburgers/Messengers</b>	<b>Pie</b>
Oct. 18:	Charles Wooldridge/AnneMarie Frierichs	
Nov. 20:	Al Stewart/Jim Atkins	

## MONTHLY ROCK PARTY SCHEDULE

June	16th - 6:00 p.m.	Wooly's
July	14th - 2:00 p.m.	Pittards'
August	date & time TBA	The Jewelry Connection
September	AVAILABLE	
October	AVAILABLE	
November	AVAILABLE	
December	date & time TBA	Marburgers'

## NATIONAL OR REGIONAL EVENTS

**24: COLUMBUS, NE.** Loup Valley Gem & Mineral Society's Swap; Isaac Walton Cabin, Junction Hwys. 81 & 30; Sun. 9-5; CONTACT: Mary Wemhoff, P.O. Box 257, Platte Center, NE 68653, 402.246.3955, [wemhoffconst@plattevalley.net](mailto:wemhoffconst@plattevalley.net).



## GENERAL MEETING MINUTES

### LGMC General Meeting, May 17, 2012, Bethany Park Shelter House

Respectfully submitted by Sharon Marburger, Secretary

- Call to Order - 7:01 p.m.
- Adult members present - 26
- Mineral Monkeys present - 3
- Visitors present - 4
- Motion by Jim Marburger to accept the minutes as published in the Pick & Shovel, second by Ed Dvorak, motion carried.
- Motion by Charles Wooldridge to accept the Treasurer's report as read by Vera Lyman, second by Brad Nielsen, motion carried.

proposed budget, second by Rowdy Cropp, motion carried.

4. Wooly called for a Show Committee meeting to convene following the program. He invited all club members to be a part of the committee.
5. Motion by John Harrison to adjourn the meeting to program, second by Ed Dvorak. Meeting adjourned at 7:21 p.m.

### OLD BUSINESS

1. The May Rock Party will be held Saturday at the Marburger residence. 5:00 p.m. Menu starts with pulled pork. Plan to sort, oil, and package emeralds for 2013 Show.
2. The June Rock Party will be held on the 16th at the Wooldridge residence. 6:00 p.m. This will be a picnic supper. Bring projects to work on.
3. Grinding Party will be July 8 at the Pioneer Park Nature Center, Chet Ager Building. 1:00 - 4:00 p.m.
4. The July Rock Party will be hosted by the Pittards. 2:00 p.m., cooking starts at 4:00. There will be a jam session after eating. Bring your projects and equipment.
5. The August Rock Party will be held at The Jewelry Connection. Watch the Pick & Shovel for date and time.

### NEW BUSINESS

1. The Loup Valley Gem & Mineral Club's Swap will be held June 24 in Columbus. (See page 2 for details)
2. The Loup Valley club's show will be September 22 and 23 in Columbus.
3. The proposed 2013 Show Budget was presented. Jim Marburger moved to accept the

### PROGRAM

Mineral Monkey Ian Williams wrote a report on the Nebraska State Fossil. He read his report to those present and explained that chickens discovered it. (See page 8 for report.)

The program was a video of Cash & Treasures: Petrified Wood. Kirsten goes to Ashwood, Oregon and Sweet Home, Oregon to collect petrified wood. As always, she exudes a lot of excitement and is very entertaining.

## SHOW COMMITTEE MEETING #2

by Sharon Marburger

Wooly opened the meeting with the good news that John Harrison accepted the position of Floor Chairman. Having held this Chair in the past, he is a great candidate for the job.

Wooly and Jim Marburger met with a marketing agent who specializes in non-profit organizations. Some of her suggestions included:

- try different advertising venues, such as KFRX radio, to reach a different age of people;
- work with Morrill Hall and share advertising and activities;
- find grad students who may need an advertising project;

*(Continued on page 4)*

## SHOW COMMITTEE MEETING #2 - CONT.

(Continued from page 3)

- re-do the web page;
- in addition to rockhounds, try to appeal to families, artists, and others.

Pat Dvorak offered to talk to her school about designing a web page.

General Excavating will donate gravel for a "field trip" in the parking lot. The Event Center will keep the leftover material.

Wooly suggested we take a photograph of any effective billboards we run across.

We will try to contact Bill Breckenridge for a special display.

Mark Awakuni-Swetland will check with the Native American museum in Norman, Oklahoma to see if they would be willing to provide a display. He will also talk to UNL Geology Department to see if we can involve them, too.

Tom Whitlatch will be contacted to find out where the Cedar Rapids club gets their mammoth display.

Pete will follow up on getting a local Native American beadwork display.

Wooly has contacted Mr. Bones and the Kenfield Museum but has not yet heard back.

Will contact the Zoo School to find out how to advertise in the schools. Susy McMahan will contact LPS.

Possibly have a booth where scouts can earn their Geology Badge.

Several suggestions for field trip locations were mentioned. Pete has offered to lead a Nemaha River trip; Donovan Harris a Fairbury trip. An on-your-own field trip to Morrill Hall was also suggested.

Wooly will invite the Bead Society to participate.

There was discussion on adding a 15th dealer. Nothing yet decided.

Meeting adjourned at 8:51 p.m.

### Silversmithing classes

**The Jewelry Connection Ltd.  
Indian Village Shopping Ctr.  
13th & Arapahoe, Lincoln**

**Tuesdays**

**May 1, 2012**

**thru**

**June 19, 2012**

**7:00 p.m. - 10:00 p.m.**

**Tuition: \$120 plus \$30 supply deposit**

**Contact:**

**Jayne Beer 402-890-3307**

**Judith Bay 402-423-7058**

**or e-mail**

**[jbeer60070@aol.com](mailto:jbeer60070@aol.com)**

**Last class before  
7 week summer break!  
Classes resume August 14.**

# PICNIC AT WOOLLY'S



Bring your projects and equipment - and don't forget your appetite! There is always plenty of food and fun at these monthly gatherings. Come learn and teach.

**Saturday, June 16**

**6:00 p.m.**

**6115 Huntington**

**FUN FUN FUN FUN FUN FUN**



## J J & L Rocks & Minerals

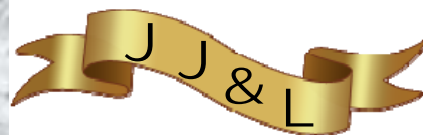
P.O. Box 68  
Hickman, NE 68372

330 Locust  
Hickman, NE 68372

John Harrison  
Lee Harrison  
402.792.2337

James Marburger  
Sharon Marburger  
402.792.2348

[jimandjohn@jjlrocksandminerals.com](mailto:jimandjohn@jjlrocksandminerals.com)  
[www.jjlrocksandminerals.com](http://www.jjlrocksandminerals.com)  
jjlrocksmin - Ebay Username



Proudly serving  
the hobby for  
36 years

## BENCH TIPS BY BRAD SMITH

### STRAIGHTENING WIRE

Have you ever pulled out your silver wire and found that it's all bent up? The easiest way I've found to straighten it out is to stretch it a bit. Simply put one end in the vise and grab the other end with a pair of serrated tip pliers. Then pull just enough to feel the wire stretch like a rubber band.

This works best on smaller wire diameters, up to about 16 ga. If you're working on thick wires and pulling hard, be sure to brace yourself in case the wire breaks or pulls out of the pliers.

### DO BEZELS SHRINK?

The engineer in me says there's no reason a bezel should shrink when I solder it onto a base plate, but I sometimes find that the stone won't quite fit into the bezel that was perfect just before soldering.

If that ever happens to you, here's a fix that usually works for those times when there's just a minor problem. I file or sand the stone down a little around its base. For soft cabs like turquoise, lapis, jet or howelite, you can use a sanding stick. But for harder cabs like jasper or agates, you have to use a diamond file or one of the ruby nail files from the drugstore.

There are two important things to remember when doing this. First, you can only make a minor adjustment in the stone size. All filing or sanding has to be hidden by the bezel because it takes the polish off the stone. Second, remember to round off all sharp edges on the bottom of the stone. A sharp edge here might sit on a little extra solder that's in the bottom joint of your bezel. Just a little bump here can put enough stress the stone to risk breakage when you burnish the bezel down over onto the stone.

More BenchTips by Brad Smith are at [groups.yahoo.com/group/BenchTips/](http://groups.yahoo.com/group/BenchTips/) or [facebook.com/BenchTips](http://facebook.com/BenchTips)

## ASHFALL ADMISSION - ONE OF YOUR PERKS AS AN LGMC CLUB MEMBER

Taken from <http://ashfall.unl.edu/visit.html>

When visiting Ashfall, your first stop should be the interpretive displays and the fossil preparation laboratory. You are invited to ask the paleontologists about their work. Educational programs are presented on a regular basis. From the Visitor Center, it is but a short stroll to the Hubbard Rhino Barn, where new discoveries continue to be unearthed.

Ashfall is situated on 360 acres of rugged rangeland in the scenic Verdigre Creek valley. Nature trails were developed to help interpret the geology as well as the flora and fauna of the area. Picnicking is permitted on the park, and campers can use nearby Grove Lake Wildlife Management Area near Royal. Ashfall Fossil Beds is located 4 miles east and 6 miles north of Orchard, or 2 miles west and 6 miles north of Royal, or 7 miles west and 3 miles south of Junction of Hwy 14 & 59.

Collecting fossils or other specimens on the park grounds is strictly prohibited. (If every visitor took a "souvenir," one of Nebraska's natural historic treasures would be gone forever.) Preservation of Ashfall now and for future generations is made possible by the generosity of the Nebraska Game and Parks Foundation, which purchased the land in 1986, and the Burlington Northern Foundation, which supplied a grant for construction of facilities.

### Remaining 2012 Schedule

May 25-Sept 3:	Sept 4-Oct 14:	Entrance Fee:
Monday-Saturday 9 am-5 pm	Tuesday-Saturday 10 am-4 pm	\$5.00 per person age 3 and older
Sunday 11 am-5 pm	Sunday 1 pm-4 pm (closed Mon)	Park Entry Permit:
		\$5.00 Daily Permit -OR- \$26.00 Annual Permit

## PETE'S NOTES

by Richard Peterson

**SEVERE STORMS** - I have never met a rockhound who would wait for an approaching thunderstorm (you know the kind with rain, strong wind and the like) before they leave home on a collecting trip, much less one who would wait until a tornado was near. Severe storms are unpredictable and are likely to fire-up after you are already in the field. In such cases, no matter where you are collecting, you will have to improvise and fend for yourself. There is no basement or interior first-floor room along a river bottom or dry ravine. Getting soaked to the bone will be the least of your concerns. If you are caught in a potentially dangerous situation, don't underestimate the danger when you suspect severe weather is near. Rules to follow:

1. Know where you are, and where you want to be.
2. Don't panic.
3. Come up with an escape route to safety.

By route to safety, I mean a way that will get you back to your vehicle, or at least on the right side of potentially high water so you can get home after the danger has passed.

You may have to hunker-down to wait out the storm, a place where flash flooding cannot cut off your escape route. Avoid areas with large trees. In a forest or river setting, trees are in different stages of their lives. There are young trees as well as strong, mature trees. In this mix are those that are rotted by diseased and slowly dying. These are usually the first to topple or get blown away in a wind storm. In a forested area along a river, seek shelter in a low area under a thicket of small, immature trees; trees that will not kill you if they do break or get blown over, like one of the many thickets of willow saplings that line the river banks of southeast Nebraska. These areas are between the larger, more mature trees higher up on the flood plain, yet still above the potentially swelling river flow.

If caught in the open, like the grasslands of northwest Nebraska, go to a low place such as a ravine or shallow valley, an area that doesn't have flash flood potential. About the only advantage to being caught out in the open is that you may have visual warning of thunderstorms moving your way.

General rules to follow wherever you are:

1. Do not stand under a tall tree to keep dry; tall trees are natural lightning rods.
2. Avoid hilltops or standing in an open field because you will become the lightning rod.
3. Get away from anything metallic - tractors, farm equipment, wire fences, metal pipes, rails and other metal pathways that could carry electrical current into your body.

If you feel your hair stand on end (which indicates that lightning is about to strike), squat low to the ground on the balls of your feet. Place your hands over your head and ears and place your head between your knees. Awkward, yes, but you must make yourself the smallest target possible with as little contact with the ground as possible. **DO NOT** lie flat on the ground.

**REMEMBER:** 1) Lightning often strikes away from heavy rains and may occur as far as 10 miles away from any rainfall; and 2) "Heat lightning" is from a thunderstorm too far away for the thunder to be heard. The storm may be moving in your direction.

If collecting with another person and one of you is hit by lightning, remember that lightning-strike victims carry no electrical charge. That means there is no shock risk if the victim is touched. The victim should be attended to immediately. If not breathing, the victim needs mouth-to-mouth resuscitation to get the lungs "breathing" again. Do your best. If the heart has stopped, after checking the pulse or other extremities, administer CPR (Cardiopulmonary Resuscitation). Knowing the basics of CPR may be a good thing to learn before your next trip to the field. Even if not formally trained in CPR, you should at least try ... it may be hours before the victim can be attended to by professionals. Hearts and lungs can't stop functioning for long.

### AND THE WORD IS...? WHAT IS PYROLUSITE.

This mineral is used as a source of magnesium metal and magnesia. It was named for Archibald Bruce (1777-1818), the American mineralogist who first described it. Is this one as easy as it seems? Tick tock, tick tock ...

**MINERAL MONKEYS**

by Sharon Marburger



**Hi Monkeys!**

School is out for the summer! I hope you take the opportunity to do some local field trips, perhaps at a local gas station, shopping center, or hotel. Be sure to ask permission before taking any specimens from these parking lot landscaping.



**Archie**

by Ian Williams, LGMC (7 years old)

Nebraska state fossil is the woolly mammoth, at Morrill Hall museum is Archie!

He is the biggest mammoth fossil in America!

It was discovered in Lincoln County, Nebraska in 1927 on a farm by CHICKENS!!!!!!!!




P	M	U	S	E	U	M	W	L	Y	L	O	O	W
H	A	T	B	X	Y	P	P	U	E	D	N	G	O
Z	E	I	H	C	R	A	O	L	M	H	E	Q	E
R	E	B	H	I	P	L	L	Z	O	Y	B	E	R
S	P	E	C	I	M	E	N	S	R	L	R	V	O
Q	E	W	H	I	B	O	P	R	R	T	A	K	C
L	I	N	C	O	L	N	U	L	I	S	S	O	F
R	P	H	N	Z	C	T	K	J	L	R	K	D	W
S	T	T	U	S	K	O	T	B	L	Y	A	P	C
E	A	O	Z	R	E	L	A	R	I	M	A	Q	Z
S	J	M	L	D	B	O	N	E	S	S	Y	D	N
L	C	M	A	Q	S	G	R	E	E	N	A	N	Z
Z	S	A	L	E	H	Y	S	G	E	Z	B	I	G
L	N	M	N	O	T	E	L	E	K	S	Y	T	A

- ARCHIE
- BIG
- BONES
- FOSSIL
- LINCOLN
- MAMMOTH
- MORRILL
- MUSEUM
- NEBRASKA
- PALEONTOLOGY
- SKELETON
- SPECIMEN
- TUSK
- WOOLY

**2013 SHOW COMMITTEE**

- Chairman:..... Charles Wooldridge
- Breakfast: ..... Vera Lyman
- Dealers: ..... Charles Wooldridge
- Demonstrators: ..... Richard Peterson
- Displays: ..... Ed Ridge
- Event Center Liaison..... Vera Lyman
- Finance & Ticket Sales: ..... Vera Lyman, Jim Atkins
- Floor Chairman: ..... John Harrison
- Forms ..... Sharon Marburger
- Host Hotel ..... Sharon Marburger
- LGMC Club Booth: .....
- MWF Coordination ..... Sharon Marburger  
Vera Lyman
- Plants:..... Ed Ridge
- Pre-Registration ..... Richard Peterson
- Printed Program: ..... Sharon Marburger
- Programs & Speakers:.....
- Publicity & Promotion: ..... James Marburger  
Charles Wooldridge
- Ribbons & Recognitions: ..... Al & Marilyn Stewart
- Security: ..... Vera Lyman
- Silent Auction: ..... Stella Thiessen
- Special Features: .....
- Web Master: ..... Jim Atkins
- Youth Activities: ..... Kay Jurgens



## A Celebration of Agates

### July 26 to 29, 2012

Seminars on Thursday: 8 a.m. to 5 p.m.

Event hours: Friday, noon to 7 p.m.; Saturday, 9 a.m. to 5 p.m.; Sunday, 10 a.m. to 4 p.m.

**Lindbergh Center at Hopkins High School  
2400 Lindbergh Drive  
Minnetonka, Minnesota**

The Minnesota Mineral Club is hosting a four-day agate show, in conjunction with the American Federation of Mineralogical Societies and the Midwest Federation of Mineralogical and Geological Societies.

Sign up for more information at [www.minnesotamineralclub.org](http://www.minnesotamineralclub.org)

- Celebrate agates!
- Celebrate collectors!
- Celebrate rockhounds!
- Celebrate Minnesota!
- Celebrate dealers!
- Celebrate kids and families

**If you plan to attend the MWF Convention in July,  
we can use an alternate delegate. See Richard Peterson.**

## LINCOLN CURIOS ROCK SHOP

6625 Burlington - Lincoln, NE 68507 [Park in alley]  
(402) 310-3307

**► SPECIALIZING IN ARIZONA PETRIFIED WOOD ◀**

- ◆ Rough stones and fossils for the hobbyist
- ◆ Polished stone items for interior décor
- ◆ Great selection of tumble-polished stones
- ◆ Natural petrified wood for landscaping



Open Tuesday thru Saturday  
10 a.m. - 6 p.m.

## MAY ROCK PARTY

By Sharon Marburger

Ahhhh, the smell of pork slowly roasting all day long - yummy! - knowing all along that I would not be able to eat any. But, Jim had tried two new recipes, so I had to taste each one to see which was better. The root beer pulled pork got my vote over the Coca-Cola version; very surprising because I love Coke. Club members started to arrive at 5:00 p.m., each bringing a tasty dish to accompany the pork.

There was a nice turnout of guests: Ed Dvorak; Ed Ridge; Brian, Jayne, and Corey Beer; Susy McMahan; Bob and Pat Gमित; Andrew Tiedje; Richard Peterson; Vera Lyman; and Jim and I. Chika the cat also made the rounds, accepting scratches and pets from whoever would oblige.

After eating, we broke into groups to work on the emeralds to be given away at the 2013 Show. There was a group of Sorters, a group of Oilers, a group of Wipers, a group of Labelers, and a group of Baggers. What a team! No matter which way I turned my ear, all I could hear was talking and laughing. It sounded like everyone was having a blast.

In the kitchen where the Baggers were hard at work, there was a discussion about which Labeler had the best system. A challenge to a race was issued by Susy McMahan, which competitive Jayne Beer could not resist. The race was on! Both contestants calmly and methodically stuck labels on the Ziploc bags. At the end of the 80-label sheet, Jayne appeared the victor. We all determined that Jayne's method was best, even though it looked time-consuming. This brought on more laughter and good natured ribbing.

The party broke up early due to our friendly weather radio issuing a warning for a severe thunderstorm, and reports of possible tornadoes to the west. After a brief pea-sized hail shower, those who remained packed up and headed for their respective homes.

Even with the early departures, we were able to prepare about one-third of the 2,000 emeralds goal.



**STANDING COMMITTEES CHAIRMEN**

Audit	John Harrison
	James Marburger
	Ed Dvorak
Christmas Party	Edward Ridge
Education / Librarian	Charles Wooldridge
	Judy Cropp
Facebook	Andrew Tiedje
Field Trips	James Marburger
Geology Day Coordinator	Aulden Stewart
Grinding Party	Aulden Stewart
Historian	Sharon Marburger
Legislative Liaison	Robert Cropp
Membership Record	Edward Ridge
MWF Liaison	Vera Lyman
Programs	Jayne Beer/Judy Cropp
Property	James Marburger
Refreshments / Door Prizes	Mary Pittard
Scholarship	Vera Lyman
Show—2013	Charles Wooldridge
Swap—2013	Richard Peterson
Website	Jim Atkins
Youth Activities	Stella Thiessen
	Andrew Tiedje

**ADVERTISING, SUBSCRIPTION,  
AND MEMBERSHIP INFORMATION**

Advertising by rock / hobby business or interest is permitted with the approval of the Board of Directors. Contact the Editor with your proposed ad. The rate is set at \$20.00 per full page; \$10.00 per 1/2 page; \$5.00 per 1/4 page (minimum) per issue, paid in advance to the Club treasurer. Ads will be placed throughout the newsletter as space permits.

Subscription to the Pick & Shovel is \$15.00 per year for mailed copy.

Membership dues for the Lincoln Gem & Mineral Club are as follows:

- Adults (age 16 and over) - \$15 per year or \$25 per couple (within the same household)
- Juniors - \$2 per year (with a responsible adult)

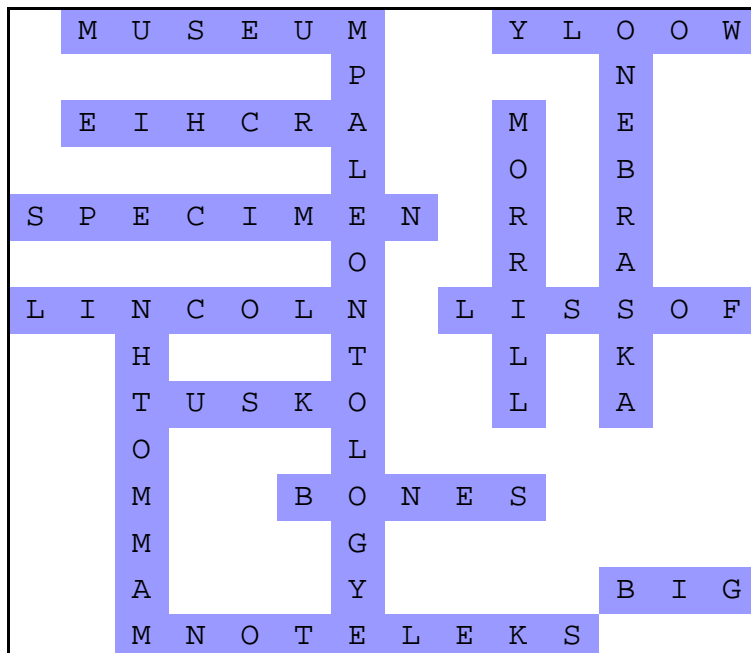
All new memberships must be accompanied by a written application. Prospective members must gain Board approval and attend one regular

**LONG RANGE PLANNING &  
BY-LAWS COMMITTEE**

<b>1 year</b>	Edward Ridge
	Robert Cropp
<b>2 years</b>	Charles Wooldridge
	Sharon Marburger
<b>3 years</b>	Vera Lyman
	John Harrison

**NOMINATING COMMITTEE**

3 years	Brad Nielsen
	Roger Pittard
2 years	Robert Cropp
	Judy Cropp
1 year	Vera Lyman
	Edward Ridge



*Answers to Mineral Monkeys' puzzle*

Mail Exchange Newsletters to:  
Lincoln Gem & Mineral Club, Inc.  
P.O. Box 5342  
Lincoln, NE 68505-0342  
Or e-mail newsletters to:  
lgmsecretary@yahoo.com

# PICK & SHOVEL

THE *PICK & SHOVEL* IS THE OFFICIAL PUBLICATION OF THE LINCOLN GEM & MINERAL CLUB, INC., LINCOLN, NEBRASKA. ARTICLES AND ITEMS APPEARING WITHIN MAY BE REPRODUCED IN OTHER CLUB BULLETINS, PROVIDED PROPER CREDIT IS GIVEN TO THE *PICK & SHOVEL* AND THE AUTHOR, AND THAT A REPRINT OF THE ARTICLE IS SENT TO THE EDITOR OF THE *PICK & SHOVEL*.

## YOUR PICK & SHOVEL STAFF:

**PUBLISHER:** LINCOLN GEM & MINERAL CLUB, INC.,  
P.O. BOX 5342, LINCOLN, NEBRASKA  
68505-0342

**EDITOR:** SHARON MARBURGER, P.O. BOX 64,  
HICKMAN, NEBRASKA 68372, E-MAIL:  
LGMSECRETARY@YAHOO.COM

**CIRCULATION:** VERA LYMAN, 402-464-6089

**REPORTERS:** ALL MEMBERS ARE ENCOURAGED TO  
SUBMIT ARTICLES, POETRY, OR DRAWINGS.

A SPECIAL THANKS TO THIS MONTH'S  
CONTRIBUTORS: RICHARD PETERSON, SHARON  
MARBURGER, BRAD SMITH, AND IAN WILLIAMS.

