



# PICK & SHOVEL

P.O. Box 5342, Lincoln, Nebraska 68505-0342, [www.lincolngemmineralclub.org](http://www.lincolngemmineralclub.org)

Volume 54, Issue 7  
March 2012

The purpose of this corporation shall be to study, promote an interest in, and disseminate knowledge of lapidary and various Earth Sciences including but not necessarily limited to Geology, Paleontology and Mineralogy. It shall be a particular purpose of the corporation to provide education in these fields to its members and the general public, especially to youth and student groups.



## UPCOMING EVENTS

Regular monthly meetings are held at 7:00 p.m. at the Bethany Park Shelter House on the third Thursday of the month: Sep., Oct., Nov., Feb., Mar., Apr., and May; the first Sunday in December; and the fourth Saturday in January. Youth activities begin at 6:30 p.m. on the same dates. Summer meetings and other activities will be announced as they are planned.

### Calendar of 2012 Meeting Dates

<u>Board</u>	<u>General</u>
	Mar. 15
Apr. 4	Apr. 19
May 2	May 17
Sep. 5	Sep. 20
Oct. 3	Oct. 18
Nov. 1	Nov. 15
Nov. 28	Dec. 2

**March Meeting**  
March 15, 2012, 7:00 p.m.

**Mineral Monkeys**  
6:30 p.m.

**Program: "Treasure Hunting"**

### March Rock Party

March 24, 2012, 5:00 p.m.  
at Ed Ridge's residence  
See announcement on page 3.

### Special Activities

Pfizer/LPS/Novartis Science Fair	Mar. 27
Show	Apr. 7-8
Grinding Party	Jul. 8

### Show Committee Meeting

If you have anything at all to do with the show, be at Vera Lyman's home at 6:30 p.m. on March 14. This is our last opportunity to tie up all the loose ends. See you there!!

## SUNSHINE CORNER

### Happy Birthday

Jim Marburger - Mar. 17

Welcome to the newest future Mineral Monkey, Ja'zeil JaMarai Jayvian, born to Kelly Beer on February 26. Mom and son are doing well.



# March 27, 2012: Pfizer/LPS/Novartis Science Fair

Do you have small fossils, tumbled or natural stone chips, or other specimens cluttering up your shop? Why not donate them to the Science Fair Gem Dig? Contact Susy McMahan if you want to donate specimens.

## BOARD OF DIRECTORS

### President

Richard Peterson, 402-489-2996  
padr20@yahoo.com

### 1<sup>st</sup> Vice-President

Ed Dvorak, 402-946-3041  
ed20649@windstream.net

### 2<sup>nd</sup> Vice-President

Aulden Stewart, 402-483-1044  
mmstewart@inebraska.com

### Treasurer

Vera Lyman, 402-464-6089

### Secretary

Sharon Marburger, 402-792-2348  
lgmcsecretary@yahoo.com

### Board Member

Robert Cropp, 402-465-8432  
rowdyrc@hotmail.com

### Board Member

James Marburger, 402-792-2348,  
jm24122@windstream.net

### Board Member

Edward Ridge, 402-477-8469

### Board Member

Charles Wooldridge, 402-416-3233  
charles.wooldridge@nebraska.gov

## PRESIDENT'S MESSAGE

by Richard Peterson

Do I dare go out on a limb and say the worst of winter is behind us? Waiting for the Spring rains has me chomping at the bit to get to the rivers.

As for GEOLOGY DAY, I want to thank our members who passed up a beautiful day, when they could have been out doing something else, and decided to represent the club. They chose to share with others their enjoyment of the earth sciences.

Sharon Marburger will be relinquishing her duties as club secretary at the end of the year. She will continue to be editor of the P&S and MWF newsletters. The Secretary's duties include attending the Board of Directors and General meetings, taking minutes, then making those available for the Pick & Shovel and the next Board meeting. Contact Wooly if you are interested in this position.



## REFRESHMENTS SCHEDULE

<b>Mar. 15: Ed &amp; Pat Dvorak/Jayne Beer</b>	<b>Bar Cookies</b>
Apr. 19: Stella Thiessen/Vera Lyman	Cake
May 17: Richard Peterson/Brad Nielsen	Cookies
Sep. 20: Sharon Marburger/OPEN	Pie
Oct. 18: OPEN/OPEN	OPEN
Nov. 20: OPEN/OPEN	OPEN

## MONTHLY ROCK PARTY SCHEDULE

March	24th - 5:00 p.m.	Ridge
April	To be determined	The Jewelry Connection
May	19th - 5:00 p.m.	Marburgers
June	AVAILABLE	
July	AVAILABLE	
August	AVAILABLE	
September	AVAILABLE	

## National or Regional Events

**MARCH 10-11: MACOMB, IL.** Geodeland Earth Science Clubs' 32nd Annual Show; Student Union Ballroom, Western Illinois University; Sat. 10-6, Sun. 10-5; CONTACT: Regina Kapta, 1483 E. Wood St., Decatur, IL 62521, 309.830.6516, [cigmc@comcast.net](mailto:cigmc@comcast.net).

### \*\*\*\* JOINT FIELD TRIP \*\*\*\*

HOST: North Central Kansas Rock & Gem Club  
**March 31, 2012**  
 Meet at 9 a.m. at Rails & Trails Quick Trip in Marysville, KS (east end of the Big Blue River bridge on US 36.

#### ITINERARY

1. Edwards Rock Quarry
2. Roadside cut (fossils)
3. Blue Rapids Park (look at rocks)
4. Northeast of Riley (garnet strip)
5. Riley (Arts & Memories Museum)
6. Road hunt (paint pot sandstone)

## Silversmithing classes

The Jewelry Connection Ltd.  
 Indian Village Shopping Ctr.  
 13th & Arapahoe, Lincoln

Tuesdays

March 6, 2012

thru

April 24, 2012

7:00 p.m. - 10:00 p.m.

Tuition: \$120 plus \$30 supply deposit

Contact:

Jayne Beer 402-890-3307

Judith Bay 402-423-7058

or e-mail

[jbeer60070@aol.com](mailto:jbeer60070@aol.com)

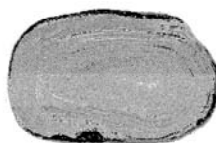


## Eddie's Irish Rock Party

Ed Ridge's Residence  
 March 24 @ 5:00 p.m.  
 2507 A Street

Bring your tasty victuals and be prepared for culinary delights and an evening full of hobby fun and fellowship. Do not forget your equipment and projects!

## AFMS & MWF 2012 SHOW & CONVENTION



*A Celebration of  
 Agates*

*July 26 to 29, 2012*

Seminars on Thursday: 8 a.m. to 5 p.m.

Event hours: Friday, noon to 7 p.m.; Saturday, 9 a.m. to 5 p.m.; Sunday, 10 a.m. to 4 p.m.

Lindbergh Center at Hopkins High School  
 2400 Lindbergh Drive  
 Minnetonka, Minnesota

## PETE' NOTES

by Richard Peterson

### WATER - Part II.

The last time we talked, the Helpful Tip began our discussion on what to do if, in an emergency, you had to drink stream or river water. Your best bet to minimize gastrointestinal problems is to boil, chemically treat, or filter.

**BOILING** - This method will kill any, repeat any, organisms in the water. No matter at what altitude you find yourself, or the time it takes to bring the water to a rolling boil, the temperature is sufficient to kill *E. coli*, *Giardia*, *Cryptosporidium*, and any other water borne pathogen. Don't be in a hurry; boil the water for a full two minutes. Boiling is dependent on having fuel to burn (remember, you need a fire), some way to start the fire, a metal container in which to boil the water, and the patience it takes for the water to come to a rolling boil.

**CHEMICAL TREATMENT** - Chemicals having the ability to disinfect water are known as halogens, and include iodine and chlorine. Their effectiveness is directly related to their concentration in the water, the time the halogen is in contact with the water, and the water temperature.

- **IODINE.** This is available in tablet or liquid form. Tablets are easier to carry and use. Iodine kills bacteria, viruses and most protozoans cysts. The recommended dosage of 2 tablets per quart of water is sufficient to kill *Giardia*. Three tablets should be used if the quality of the water is suspect. Once placed in the water, the tablets should be allowed to sit for at least thirty minutes, then the water shaken, and let sit again. This will ensure thorough mixing. Iodine tablets deteriorate when exposed to heat, humidity and moisture, all three of which reduce their effectiveness. Over time, opening the bottle repeatedly to remove tablets results in the normally gray colored tablets changing to a greenish or yellow color. Always use fresh iodine tablets. Read the fine print on the brand you decide to buy. Advantages: Easy to use, lightweight, and inexpensive. Disadvantages: Some people are allergic to iodine, people with thyroid problems should not use them, and some popular brands don't protect against *Cryptosporidium*.

- **CHLORINE.** Several products on the market release chlorine when added to water. Do not carry a small container of common household bleach in your survival kit to disinfect your water. There are many variables when using liquid bleach; the concentration, number (and size) of drops to add, the time needed to let it sit, and the water temperature. With so many variables, the water you think you're disinfecting may not really be safe to drink. Carry fresh chlorine tablets and follow the manufacturer's instructions. Advantages: No after taste and unlike iodine, kills *Cryptosporidium*. Disadvantage: Four hour contact time with the water to disinfect.
- **FILTRATION.** Sounds simple, but there is a lot of confusion as to how effectively filtration devices really disinfect. Some filters only remove the "big stuff", like *Giardia* and *Cryptosporidium*, while others remove smaller organisms such as viruses. Some filtration devices are pumps; some are bottles that require you to force (usually by sucking) the water through a filter, while others rely on gravity. If you are interested in such devices, read the fine print; there are many products from which to choose. Search the internet or visit the nearest outdoor sports store for the appropriate products. Store personnel are frequently, but not always, very knowledgeable. As in any purchase, do your homework so you know the questions to ask.

For all the methods of disinfection discussed, you will have to decide what extra gear to carry in your backpack. Words of advice: Carry plenty of water with you so you don't have to drink the water available. For more information, check out <http://www.outdoorsafe.com/safewater.htm>.

**AND THE WORD IS...?** What is **Ilmenite**. How many got that one? This month the mineral name is from the Greek words "fire" and "to wash". It is used as an oxidizing agent in the manufacture of glass, to rid the molten silica of the greenish cast imparted by iron.

**CHUCKLES:** A real diplomat is a man who remembers a woman's birthday, but forgets her age.

## GENERAL MEETING MINUTES

### LGMC General Meeting, February 17, 2012, Bethany Park Shelter House

Respectfully submitted by Sharon Marburger, Secretary

A **SPECIAL THANKS** to Vera Lyman for taking the meeting notes in my absence.

The meeting was called to order at 7:06 p.m. by President Richard Peterson. Fifteen adult members and three Mineral Monkeys were present. Visitor Kevin Kaup applied for membership.

#### ANNOUNCEMENTS:

1. A thank you note from the Pioneers Park Nature Center indicated only 31 adults and 5 children attended Geology Day. It is unclear why there was such poor attendance.
2. The February Rock Party remains an Italian theme, but will move from the Marburgers to The Jewelry Connection on February 18 at 5:00 p.m. due to Sharon's illness. The March party will be hosted by Ed Ridge; the April party by The Jewelry Connection; and the May party by the Marburgers.
3. The Kansas City Show will be March 9-11, 2012.
4. The Lawrence County Rock Club show will be in June.
5. The Pfizer Science Fair will be held on March 27 at Pershing.
6. The Midwest Federation Show and convention

will be in Minnetonka, Minnesota on July 26-29, 2012. We need to send a delegate.

#### OLD BUSINESS:

1. The minutes of the January meeting were published in the Pick & Shovel. Jim Marburger moved to accept the minutes as printed, second by Ed Dvorak. Carried.
2. The Treasurer's Report was read by Treasurer Lyman. Ed Dvorak moved to accept the report as read, second by Robert Cropp. Carried.
3. Richard Peterson and Jim Marburger went to the Zoo School from 3:30 - 5:00 p.m. on February 17. They were able to identify many specimens for the students.

#### NEW BUSINESS:

1. Judy Cropp went to Tucson, Arizona and brought back materials.
2. General Information sheets - 50 new brochures have been printed.

#### SHOW REPORT:

1. Confirmations from dealers, demonstrators and Special Features have been received.

*(Continued on page 6)*

## J J & L Rocks & Minerals

**P.O. Box 68  
Hickman, NE 68372**

**330 Locust  
Hickman, NE 68372**

John Harrison  
Lee Harrison  
402.792.2337

James Marburger  
Sharon Marburger  
402.792.2348

[jimandjohn@jjlrocksandminerals.com](mailto:jimandjohn@jjlrocksandminerals.com)  
[www.jjlrocksandminerals.com](http://www.jjlrocksandminerals.com)  
jjlrocksmin - Ebay Username



**Proudly serving  
the hobby for  
36 years**

## GEN. MEETING MINUTES - CONT.

*(Continued from page 5)*

2. Lots of help is needed for Friday set-up and Sunday tear-down.
3. Vera and Ellie Lyman have “stuffed” the Easter eggs that will be distributed to children attending the show.

The meeting adjourned on a motion by John Harrison, second by Ed Dvorak. Due to this secretary’s illness, the program equipment did not get to the meeting, so the program was postponed to the March meeting.

## BOARD MEETING MINUTES

### LGMC Board Meeting, February 1, 2012, Gere Library

Respectfully submitted by Sharon Marburger, Secretary

The February Board meeting was called to order at 6:30 p.m. by President Richard Peterson. All Board members were present. The juniors’ co-leader, Andrew Tiedje, and guests Judy Cropp and Pat Dvorak, were also present.

#### OLD BUSINESS:

1. Minutes of the January meeting – Charles Wooldridge moved to accept the minutes with a notation that Geology Day is once again scheduled to take place at the Pioneers Park Nature Center’s Chet Ager Building, second by Ed Dvorak. Motion carried.
2. Treasurer’s Report – Jim Marburger moved to accept the report as printed, second by Ed Dvorak. Motion carried.
3. Geology Day – February 12, 2012 at the Chet Ager Building at the Pioneers Park Nature Center.
4. Geology Display at Morrill Hall – Mark Harris contacted Wooly to say the opening has been delayed until April. He will return the club’s fluorescent display on Friday, April 6, for use at the Show.

#### NEW BUSINESS:

1. Rock Party – February 18 at 5:00 p.m. at the Marburgers Ed Ridge offered to host the

## BOARD MEETING MINUTES - CONT.

March Rock Party, March 24 at 5:00 p.m.

2. Nominations for Secretary – Judy Cropp is considering accepting a nomination.
3. Prospective new members – Charles Bachle and Greg & Betty Syslo. Vera Lyman moved to accept the membership applications, second by Charles Wooldridge. Carried.
4. About 25 pounds of horned coral has been donated to the club, for use at the show, by “Special Ed”.
5. Sharon will contact Webmaster, Jim Atkins, regarding web site updates.

#### COMMITTEE REPORTS:

1. Swap – January 28. Preliminary reports indicate the Swap was very successful.
2. 2012 Show Committee – A copy of the floor plan must be submitted to the Event Center before March. Vera has purchased plastic Easter eggs to fill with prizes and then distributed to children at the Show. Make the eggs a big part of advertising. Also, \$20 gift certificates for drawing. Will need helpers for setup at 8:00 a.m. on April 6, and again at tear-down on Sunday evening.
3. 2013 Show – Wooly has requested that Sharon mock up a flyer, focusing on the Emerald Anniversary. Consider having 16 dealers.

The meeting adjourned at 7:19 p.m. on a motion by Rowdy Cropp, second by Jim Marburger. Motion carried.

## ROCKHOUDS OF THE YEAR

### CORRECTION

Last month, it was reported that Stella Thiessen and Corey Beer were the 2012 Rockhounds of the Year. Although their plaques state “2012”, in actuality they were 2011 Rockhounds of the Year. The Board apologizes for the error, and still congratulates them for their accomplishments.

## MINERAL MONKEYS

by Sharon Marburger



# Hi Monkeys!



This month I borrowed a page from the March 2011 issue of the Michiana Gem & Mineral Society's newsletter, *THE ROCKFINDER*. The juniors group of that club made fossil cookies. It sounded like fun, so I decided to share with you.

### Ingredients

- 1 cup butter, softened
- 1 cup brown sugar
- 1 cup sugar
- 2 eggs
- 1/2 teaspoon salt
- 1 teaspoon vanilla
- 2 teaspoons baking soda
- 3 cups flour (scant)
- mixer
- large bowl
- measuring spoons
- measuring cups

### Talk About It

While you are making the fossil cookies discuss with your child the different tracks animals and humans can make.

Discuss how these tracks can be made on different surfaces i.e. mud or sand.

Experiment with different objects and try to make bird tracks or paw prints in the cookies.

### Baking Directions

1. Cream the butter and sugars, salt and vanilla.
2. Add the baking soda and flour and mix well.
3. Roll into balls. Then flatten the balls and shape them into circles.
4. Ask the child to make impressions in the dough with items they collected. One good item is a sea shell but let them choose.
5. Bake at 375 degrees F for 10-15 minutes or until golden brown
6. Once cooled ask your child if she can tell you what each print is.

### Take it Further

When sharing the cookies, your child can ask friends and family if they can guess what each print is.

Next time you go for a walk with your child and come across paw prints on the sidewalk, point them out and encourage your child to talk about how these tracks might have gotten there. (Are the tracks muddy, wet? Is there a puddle nearby; did it rain recently?)

Source: [http://www.pbs.org/parents/mamamirabelle/parents\\_fossil\\_cookies.html](http://www.pbs.org/parents/mamamirabelle/parents_fossil_cookies.html)

Lincoln Gem & Mineral Club, Inc.  
presents its 54th Annual Show

# 2012: A Rock Odyssey

Saturday, April 7, 2012: 9:00 a.m. to 6:00 p.m.

Sunday, April 8, 2012: 10:00 a.m. to 5:00 p.m.

Lancaster Event Center

84th and Havelock, Lincoln, Nebraska

CHILDRENS' ACTIVITIES

JASPER

EDUCATIONAL PROGRAMS

DEMONSTRATIONS

PETRIFIED WOOD

GEMSTONES

MINERALS

EQUIPMENT

JEWELRY

FOSSILS

BEADS

DEALERS

FREE  
PARKING!

SUPPLIES

AGATES



## FUN FOR THE WHOLE FAMILY

**Admission: \$5 per adult, children 11 and under free with paid adult.**

**\$9 for a 2-day pass. Bring this coupon or can of food for the**

**Lincoln Food Bank for \$1 off admission for each adult in party.**

## FEBRUARY ROCK PARTY

by Jayne Beer

The Jewelry Connection had a surprise Rock Party on Saturday, February 18. Sharon unfortunately came down with a cold / flu that she ever so kindly decided to not share with all of us. The Marburgers had planned on having an Italian theme, so I decided to stick with that, since I was so looking forward to Italian.

I made turkey spaghetti and apple Danish bars. Corey, with Brian lending a hand (just one), made a cherry and a lemon fluff pie and ranch oyster crackers. Brian made cheese sauce. Judith brought a very nice salad. Jim brought the lasagne that he had intended on having at his house. Judy and Rowdy brought an array of snacks including Paczky donuts that were delicious. Eddie brought his wonderful hand made rolls.

After the usual gorging ourselves on everyone's good food, some just sat around and visited and some of us worked on projects. Andrew finished a very nice Wild Horse Canyon jasper. I did a repair project for The Time Shoppe. I put a bezel on a ring with a cross on top that spins. Then I cut a black onyx cross. That was a challenge, but it worked out nicely. Judith made a ring for her son with a trilobite that she got from Roger Pabian's collection. Mark worked on some obsidian arrow points and Jim identified several stones for him.

We had a great turnout, including: Jim Marburger, Richard Peterson, Judy and Rowdy Cropp, Andrew Tiedje, Ed Ridge, Mark Awakuni-Swetland, Judith Bay, and all us Beers. Thanks to everyone who showed up and helped make an enjoyable evening of sharing our Hobby!!



Photos  
courtesy  
of  
Jayne  
Beer



### BENCH TIPS BY BRAD SMITH

#### PROBLEMS WITH SMALL DRILLS

When drilling small holes, you sometimes encounter new problems. We're talking about drills that are less than 1 mm (which is 18 gauge or .040 inches). Often the chuck will not tighten down far enough to grip a small twist drill. You can solve this two ways - with a chuck adapter or by buying your small drills with a 3/32 inch shank size. Either way you have a 3/32 shank to go into the chuck of your drill press, Foredom or Dremel, so changing bits is fast and easy.



Remember that small drills are much more prone to breaking because of too much pressure or if you tilt the drill or the workpiece when the drill is in the hole. And drilling always goes easier with a little wax or oil on the tip. Almost anything will work - Three-in-One, injection wax, mineral oil, Burr Life, car oil, olive oil, etc.

#### USING PRE-MADE BEZEL CUPS

As a general rule of thumb, I assume it's going to take me 15 - 20 minutes to make a bezel for an ordinary cabochon so, for some projects, buying pre-made cups can save a lot of time. If you go this route, keep in mind three things. First, try to get cups made from fine silver, not sterling. Remember that fine silver is softer and burnishes over the stone more easily.

Second, you may have trouble matching the shape and size of the stone with the shape and size of the bezel cup. Purchased cups can only be found in a limited number of standard sizes. You may have to adjust your choice of gemstone to match the cup. The other consideration is that pre-made cups often have fairly low side walls. While these are fine for low-dome stones, they will not adequately secure stones with steep side walls.

Lastly before setting, check the fit of your gemstone in the cup, particularly around the bottom. The bottom corners of a stamped cup are much more rounded than a bezel you would fabricate yourself. This causes a problem with some stones. If your stone has a sharp edge around the bottom, burnishing over the bezel will place a lot of stress on the stone and may cause it to crack. To avoid this, I round off the bottom edge of the stone with a diamond file (or use sandpaper on soft stones).

More BenchTips by Brad Smith are at  
[groups.yahoo.com/group/BenchTips/](http://groups.yahoo.com/group/BenchTips/)  
or  
[facebook.com/BenchTips](http://facebook.com/BenchTips)

## LINCOLN CURIOS ROCK SHOP

6625 Burlington - Lincoln, NE 68507 [Park in alley]  
(402) 310-3307

### ► SPECIALIZING IN ARIZONA PETRIFIED WOOD ◀

- ◆ Rough stones and fossils for the hobbyist
- ◆ Polished stone items for interior décor
- ◆ Great selection of tumble-polished stones
- ◆ Natural petrified wood for landscaping

Open Tuesday thru Saturday  
10 a.m. - 6 p.m.

**STANDING COMMITTEES CHAIRMEN**

Audit	John Harrison James Marburger Ed Dvorak
Christmas Party	Edward Ridge
Education / Librarian	Charles Wooldridge Judy Cropp
Facebook	Andrew Tiedje
Field Trips	James Marburger
Geology Day Coordinator	Aulden Stewart
Grinding Party	Aulden Stewart
Historian	Sharon Marburger
Legislative Liaison	Robert Cropp
Membership Record	Edward Ridge
MWF Liaison	Vera Lyman
Programs	Jayne Beer/Judy Cropp
Property	James Marburger
Refreshments / Door Prizes	Mary Pittard
Scholarship	Vera Lyman
Show—2012	Ed Dvorak
Swap—2012	Richard Peterson
Website	Jim Atkins
Youth Activities	Stella Thiessen Andrew Tiedje

**ADVERTISING, SUBSCRIPTION,  
AND MEMBERSHIP INFORMATION**

Advertising by rock / hobby business or interest is permitted with the approval of the Board of Directors. Contact the Editor with your proposed ad. The rate is set at \$20.00 per full page; \$10.00 per 1/2 page; \$5.00 per 1/4 page (minimum) per issue, paid in advance to the Club treasurer. Ads will be placed throughout the newsletter as space permits.

Subscription to the Pick & Shovel is \$15.00 per year for mailed copy.

Membership dues for the Lincoln Gem & Mineral Club are as follows:

- Adults (age 16 and over) - \$15 per year or \$25 per couple (within the same household)
- Juniors - \$2 per year (with a responsible adult)

All new memberships must be accompanied by a written application. Prospective members must gain Board approval and attend one regular

**LONG RANGE PLANNING &  
BY-LAWS COMMITTEE**

<b>1 year</b>	Edward Ridge Robert Cropp
<b>2 years</b>	Charles Wooldridge Sharon Marburger
<b>3 years</b>	Vera Lyman John Harrison

**NOMINATING COMMITTEE**

<b>3 years</b>	Brad Nielsen Roger Pittard
<b>2 years</b>	Robert Cropp Judy Cropp
<b>1 year</b>	Vera Lyman Edward Ridge

**HOBBY FUN**

Would you like to have some hobby fun? Consider hosting a monthly Rock Party. It doesn't matter where you hold it. All you have to do is set the date and time, provide place settings for the potluck, and have areas to work in and chairs or floor to sit on. June through December are still available. Let a Board Member know if you are interested in hosting.



Mail Exchange Newsletters to:  
Lincoln Gem & Mineral Club, Inc.  
P.O. Box 5342  
Lincoln, NE 68505-0342  
Or e-mail newsletters to:  
lgmsecretary@yahoo.com

# PICK & SHOVEL

THE *PICK & SHOVEL* IS THE OFFICIAL PUBLICATION OF THE LINCOLN GEM & MINERAL CLUB, INC., LINCOLN, NEBRASKA. ARTICLES AND ITEMS APPEARING WITHIN MAY BE REPRODUCED IN OTHER CLUB BULLETINS, PROVIDED PROPER CREDIT IS GIVEN TO THE *PICK & SHOVEL* AND THE AUTHOR, AND THAT A REPRINT OF THE ARTICLE IS SENT TO THE EDITOR OF THE *PICK & SHOVEL*.

## YOUR PICK & SHOVEL STAFF:

**PUBLISHER:** LINCOLN GEM & MINERAL CLUB, INC.,  
P.O. BOX 5342, LINCOLN, NEBRASKA 68505  
-0342

**EDITOR:** SHARON MARBURGER, P.O. BOX 64,  
HICKMAN, NEBRASKA 68372, E-MAIL:  
LGMSECRETARY@YAHOO.COM

**CIRCULATION:** VERA LYMAN, 402-464-6089

**REPORTERS:** ALL MEMBERS ARE ENCOURAGED TO  
SUBMIT ARTICLES, POETRY, OR DRAWINGS.

A SPECIAL THANKS TO THIS MONTH'S CONTRIBUTORS:  
JAYNE BEER, VERA LYMAN, RICHARD PETERSON, ED  
RIDGE, MARTIN WEBER

