



PICK & SHOVEL

Lincoln Gem & Mineral Club, Inc.

Lincoln, Nebraska

www.lincolngemmineralclub.org



Volume 53, Issue 10
June 2011

BOARD OF DIRECTORS

President

Richard Peterson, 402-489-2996
padr20@yahoo.com

1st Vice-President

Aulden Stewart, 402-483-1044
mmstewart@inebraska.com

2nd Vice-President

Ed Dvorak, 402-946-3041
ed20649@windstream.net

Treasurer

Vera Lyman, 402-464-6089

Secretary

Sharon Marburger, 402-792-2348
lgmsecretary@yahoo.com

Board Member

Robert Cropp, 402-465-8432
rowdyrc@hotmail.com

Board Member

James Marburger, 402-792-2348,
jm24122@windstream.net

Board Member

Edward Ridge, 402-477-8469

Board Member

Charles Wooldridge, 402-416-3233
charles.wooldridge@nebraska.gov

GENERAL MEETINGS / ACTIVITIES

Regular monthly meetings are held at 7:00 p.m. at the Bethany Park Shelter House on the third Thursday of the month: Sep., Oct., Nov., Feb., Mar., Apr., and May; the second Sunday in December; and the fourth Saturday in January. Youth activities begin at 6:30 p.m. on the same dates. Summer meetings and other activities will be announced as they are planned.

2011 Meeting Dates

Board

Jun 25: Rock Party at Pittards' Residence in Geneva (details inside)

Jul 10: Annual Grinding Party & Picnic in the Park

Aug Social: Wooly's Home

Aug 31 (Sep) Sep 15

Oct 5 Oct 20

Nov 2 Nov 17

Nov 30 (Dec) Dec 4

General

General Meeting
September 15, 2011
7:00 p.m.
Program: NYD

Pebble Pups
September 15, 2011
Meeting at 6:30 p.m.
"Amethyst"

Monthly Rock Party
June 25, 2011
2:00 p.m.
Hosted by Roger & Mary Pittard
1013 Road K
Geneva, NE
(see inside for directions)

BOARD MEETING

Summer break.

Next meeting: August 31, 2011 (September meeting)

The purpose of this corporation shall be to study, promote an interest in, and disseminate knowledge of lapidary and various Earth Sciences including but not necessarily limited to Geology, Paleontology and Mineralogy. It shall be a particular purpose of the corporation to provide education in these fields to its members and the general public, especially to youth and student groups.

PRESIDENT'S MESSAGE

by Richard Peterson



SUMMER is finally in full swing and our erratic spring weather is a distant memory. I know you are already looking forward to a field trip or two, or attending a gem and mineral show or swap. Our club field trip to Arkansas in August should be a great opportunity to enjoy the hunt with fellow members.

Bring samples of your summer finds to the September general meeting. Let's use that meeting to show and tell, and to share our summer adventures.

I hope to see you all at Roger and Mary Pittard's for the June Rock Party. Find details and directions on page 3. If last year's gathering was any indication, it will be a fun and relaxing time.

SUNSHINE

A big **congratulations** and **best wishes** to Charles "Wooly" Wooldridge and Jacqueline "Jackie" Barnhardt for "making a doublet" of their lives. They wed on May 27, 2011 in Long Pine, Nebraska. Join them Saturday, June 11 from 6:00-11:30 p.m. for a celebration of their marriage. Potluck begins at 6 p.m., live music by Lonesome Traveler at 7:30. The happy couple wish only for your company - **NO GIFTS.**



SCIENTIST SUNDAYS

Sunday with a Scientist
UNL: Morrill Hall
Program Schedule

June 19:	Tissue Mechanics
July 17:	Fishes of Nebraska
August 21:	Climate Change
September 18:	Plants, Feeding the World
October 16:	Fossils
November 20:	Viruses
December 18:	Minerals & Gemstones

Silversmithing classes

The Jewelry Connection Ltd.
Indian Village Shopping Ctr.
13th & Arapahoe, Lincoln

Tuesdays
May 3, 2011
thru
June 21, 2011
7:00 p.m. - 10:00 p.m.

Tuition: \$100 plus \$25 supply deposit

Contact:
Jayne Beer 402-890-3307
Judith Bay 402-423-7058
or e-mail
jbeer60070@aol.com

REFRESHMENTS SCHEDULE

Sep 15:	Pies	Jim Atkins Charles Wooldridge
Oct 20:	Pies	Linda Guenter Vera Lyman
Nov 17:	Cookies	Stella Thiessen Andrew Tiedje

June Rock Party

Saturday, June 25 at 2:00 p.m.

Eating at 4:30 p.m.

Roger & Mary Pittard's home
1013 Road K
Geneva, Nebraska

Roger and Mary will provide grilled hot dogs & buns, coffee, tea, and “country water”. You will provide:

- ◆ Your hot and/or cold dishes to accompany this fare;
- ◆ Your lawn chair to sit in;
- ◆ Your portable equipment and project; and

- ◆ Your voice! (Roger tells us there will be singing in the evening.)

If we have a quorum, we will also have a brief meeting to discuss upcoming events.

DIRECTIONS

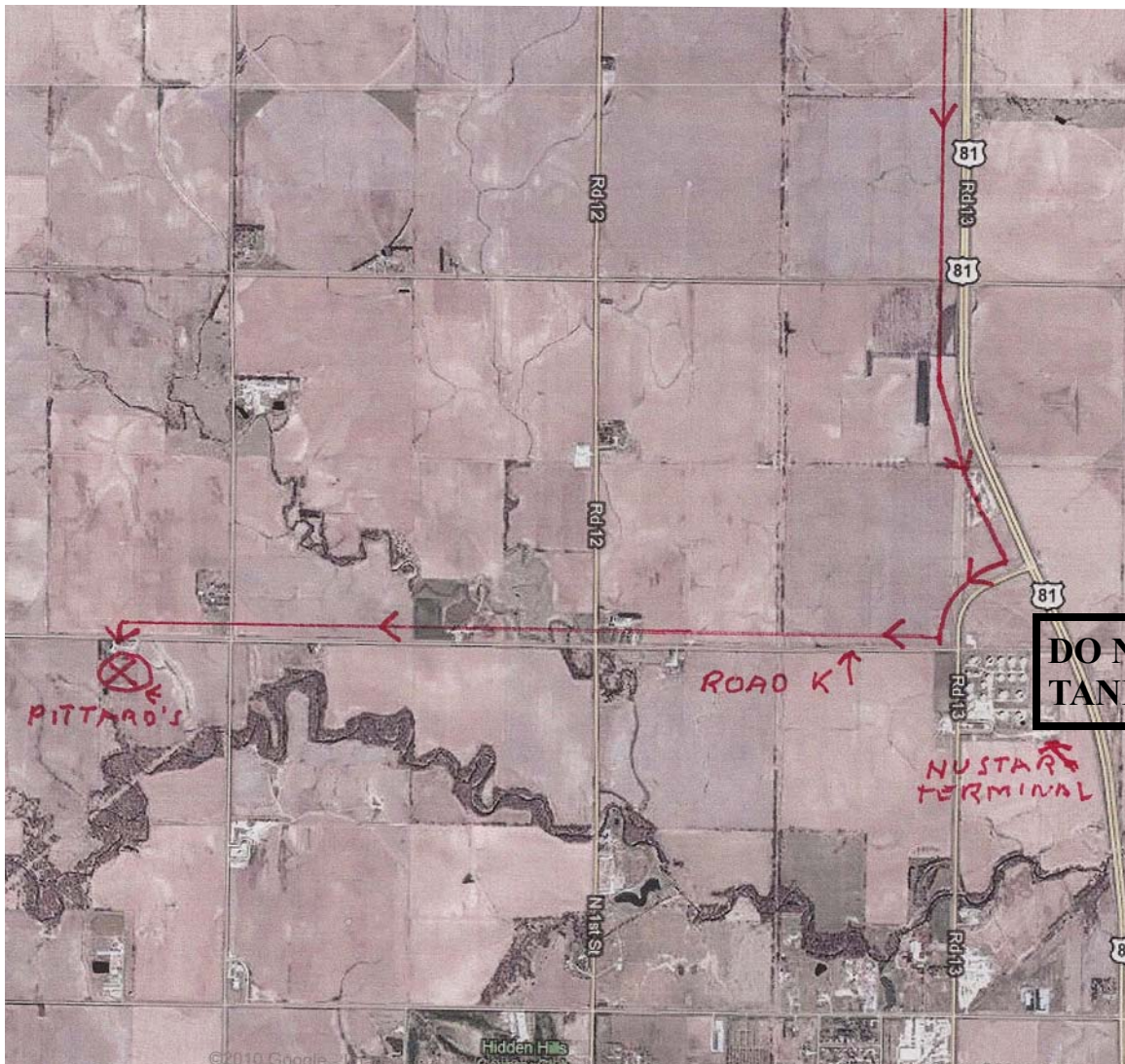
➤ I-80 West to Exit 353 at York (approx. 40 miles)

➤ From Exit 353, turn left (south) on US-81 toward Geneva (19+ miles)

➤ Take the Thirteenth Street exit (the first of four exits for Geneva), turn right, around a slight curve (¼ mile)

➤ Turn right (West) at gravel road (Road K), (this is on the north side of the Nu Star Pipeline Terminal) (go 2-1/3 miles)

➤ Turn Left into Pittard's driveway.



GENERAL MEETING MINUTES

BETHANY PARK SHELTER, MAY 19, 2011

The meeting was called to order at 7:04 p.m. by President Richard Peterson. Twenty-three members and four Mineral Monkeys were present. One adult guest, David Bright, and two youth guests were also in attendance.

The minutes of the April meeting were published in the Pick & Shovel. Charles Wooldridge moved to accept the minutes as published, second by Ed Dvorak; motion carried. The Treasurer's Report was read by Treasurer Lyman. Roger Pittard moved to accept the report as read, second by Judy Cropp; motion carried.

ANNOUNCEMENTS:

- ◆ Steve May will host the monthly Rock Party on May 21 at 6:00 p.m.
- ◆ June 5, Omaha Rock Swap.
- ◆ June 11, free concert at Wooly's with a potluck at 6:00 p.m.
- ◆ June 18-19, Western Gem & Mineral Society's Show.
- ◆ June 26, Loup Valley Swap 8-5, Isaac Walton Cabin, Highways 81 & 30.

OLD BUSINESS:

We are still in need of volunteers to attend the MWF Convention as delegates. Contact Richard Peterson if you are interested.

NEW BUSINESS:

Andrew Tiedje made presentation to the Board on the club's new Facebook account. The Board approved the account to go live.

COMMITTEE REPORTS:

President Peterson requested to resign his appointment as Legislative Liaison. He has appointed Andrew Tiedje to chair the position, effective immediately.

BOARD MEETING MINUTES

No Board Meeting minutes this month.

Information on the August Field Trip to Arkansas was published in P&S. Please contact Jim Marburger if you plan to attend. Jim will extend, to the Omaha club, an invitation to join us. A second field trip possibility is visiting the Bartel Museum at Concordia College in Seward. Again, let Jim Marburger know if you'd like to attend so carpooling can be arranged. A third possible trip would take us to the gravel quarry at Palmer, Kansas. There would be a demonstration of the old time method of hosing down gravel.

Ed Dvorak reported on the 2012 Show plans. He has already lined up the special feature display of little rock houses.

The June rock party will be held at the Pittards' home outside of Geneva. The fun begins at 2:00 p.m., food at 4:30.

The meeting adjourned to refreshments and program at 7:26 p.m. on a motion by Pat Dvorak, second by Karen Messenger; motion carried. Thanks to Richard Peterson and Sharon Marburger for providing the snacks this month. The program was the award-winning video by Doug Moore called "German Agates". It was an intriguing program showing beautiful agates.

Respectfully submitted,
Sharon Marburger

IN CASE YOU MISSED IT ...

Join Wooly and Jackie for a celebration of their marriage on Saturday, June 11 from 6:00-11:30 p.m. Potluck begins at 6 p.m., live music by Lonesome Traveler at 7:30. Bring yourself and covered dish. Please, NO GIFTS!



MAY AT MAYS': ROCK PARTY!

The May Rock Party proceeded as planned although Jim and I could not attend. I understand from host Steve May that it was a fun evening - as usual! Dick Lieb's comment was, "Had fun." Andrew Tiedje also indicated having a pleasant evening.

by Steve May

We had a good time and ate well. Those present were Dick Lieb; Andrew Tiedje; Al Stewart; Ed Ridge; Jayne, Brian and Cory Beer; Linda Guenter and me. We had hamburgers/cheeseburgers, Cheetos, and a couple choices of potato salad. For dessert we had cookies, carrot cake, and angel food cake.

Everyone had a project to work on but I didn't get to see most of them. I know everyone was busy because one of the pictures Dick took was a "back shot" of every one lined up in front of all the machines (and I added one more to the line since the last meeting). I recently cleaned up a couple of the machines so the "splash guards" were not on them. We had water everywhere but no one seemed to mind. Also, Cory showed us some of his recent "parking lot" finds.

Al carried a lot of the conversation with stories of his military days. We mostly just got to know each other a little better.



Photos courtesy of Dick Lieb.



J J & L Rocks & Minerals

P.O. Box 68
Hickman, NE 68372

330 Locust
Hickman, NE 68372

John Harrison
Lee Harrison
402.792.2337

James Marburger
Sharon Marburger
402.792.2348

jimandjohn@jjlrocksandminerals.com
www.jjlrocksandminerals.com
jjlrocksmin - Ebay Username



Proudly serving
the hobby for
35 years

PETE'S NOTES

by Richard Peterson, President

LESSONS LEARNED Part I. I've been river walking for the last two summers. The first year was learning about the river, where and how to cross, seasonal water fluctuations, as well as my own limitations. Crossing the river's twists and turns was challenging ... I learned a lot that first summer. In fact, by May of year two, I had traveled everywhere on the river that had taken me all the previous summer to accomplish. Since I'm retired, I try go to the river once a week on a non-holiday weekday, weather permitting. There is nothing like being on the river alone. There was always evidence of weekend travelers ... footprints, the signs fishermen leave behind, ATV tracks, and even tracks made by visitors on horseback. I would arrive a bit after sunrise when summer temperatures were still relatively cool and plan to be back to my car by early afternoon, just as the day was heating up and the sun was beginning to glare.

During my inaugural year, the river behaved much as one might expect. The snowmelt and early spring rains swelled the river to limit my movements. Eventually the water level lowered and I was off and exploring. There were brief, periodic rains, of course, which only made the next visit a fresh experience. The river may have risen unnoticed, but never enough to hinder my quest. By midsummer, the rains had ceased and I was free to roam. During my days on the river, I never saw another human being.

To start year two, with my confidence right up there, I began my quest a full two months earlier. The river was behaving as I expected. For reasons of weather and other commitments, the only day of the week during the last week of May that I could get away was Memorial Day Monday. I hoped I would still be alone.

The early morning was pleasantly warm, the sky a crystal blue, a light breeze ... perfect. It had rained a bit the day before and the table was set for another fresh outing. As expected, I got off the first gravel bar with only thigh-deep water to negotiate. This put me on a sand bar island that divides the river. As I continued working my way around each meander to the next bar, I was concentrating on the search. Then, I noticed that the river was rising. As I stood there

and watched, areas that had been water free were very slowly, but surely, beginning to receive water. I gave it little thought and felt that even if the river rose another foot I could still negotiate my way back to the side of the river that would lead me safely to my car. I kept walking with one eye watching the water, the other looking for items to collect. By midday, I was down to my last pint of water and had finished my two snacks. It was noon and time to turn around.

On the walk back, the river was still rising. I hastened my pace as disturbing thoughts entered my mind. By the time I got back to the sand bar island it was clear the river was higher than anticipated; it was swirling and moving fast. Although the last crossing was not that wide, I was concerned. When I got ready to retrace my steps across, I had a sinking feeling this day would be very different. To be continued... .

HELPFUL TIP: How to Make and Attach a Label to Your Specimen: LaserJet printers produce a clear, sharp, durable number. I like to use a bold, New Courier 12 font for numbers 1-99. For numbers 100-999, 8 font is used. The numbers are punched out of the sheet of paper using a standard hand held paper punch. Use a punch that cuts a clean circle without leaving ragged edges. I use an acrylic finger nail sealer to secure the numbered circle to the specimen. Not all sealers are created equal. Cover Girl NailSlicks("Clear Ice") is very stable over time. This comes in a .5 fluid ounce bottle with a brush in the lid. A small, thin film of sealer is placed on the specimen and the numbered circle is set in place. Let the sealer dry a bit until tacky, then flatten the circle to the specimen. For this, use the tip of a toothpick, not your finger. A moist finger tip can lift the circle loose. Allow to dry overnight, then seal the surface and edges of the numbered circle with a thin layer of sealer.

AND THE WORD IS...? Getting a little tougher I hope. What is STIBNITE?

The name this month is from German meaning "underground spirit" or "goblin", an allusion to the fact that certain ores did not smelt properly, as though bewitched.

ONGOING PROJECTS / EVENTS

SPECIMENS FOR SCHOOLS

We are still collecting samples for the Lincoln Public Schools' (LPS) 5th grade science classes. The requested specimens are to be 1 to 2 inches in size, and 12 to a bag. If possible, a minimum of 12 bags are requested per specimen. (To help with the confusion, this would be 144 pieces of any one specimen.) The bagged specimens are to be given to Vera Lyman for delivery to the LPS contact. The list of requested specimens is below:

- | | | | |
|----|----------------|----|-------------------|
| 1 | Quartz | 13 | Obsidian |
| 2 | Feldspar | 14 | Pumice |
| 3 | Mica | 15 | Sandstone |
| 4 | Calcite | 16 | Shale |
| 5 | Halite | 17 | Limestone |
| 6 | Talc | 18 | Chalk |
| 7 | ----- | 19 | Coal |
| 8 | Pyrite | 20 | Marble |
| 9 | Copper Sulfide | 21 | Slate |
| 10 | Sulpher | 22 | Quartzite |
| 11 | Granite | 23 | Petrified Wood |
| 12 | Basalt | 24 | Fossil Gastropods |

HOBBY FUN

Would you like to have some hobby fun? Consider hosting a monthly Rock Party. It doesn't matter where you hold it. All you have to do is set the date and time, provide place settings for the potluck, and have areas to work in and chairs or floor to sit on. Let a Board Member know if you are interested in hosting.

Still Available in 2011:

September, October, November, December

ON THE HUNT

The Club Library is missing the following issues of the *Lapidary Journal*:

- | | |
|-----------------|------------------|
| 1960 - February | 1978 - March |
| 1968 - April | 2002 - May, June |
| 1969 - April | 2006 - April |

If you spot any of these issues, please purchase them and let Wooly, Judy Cropp, Vera Lyman, or Sharon Marburger know. You may donate them or be reimbursed.

Completed!



2011 ALL AMERICAN

Reminder:

If you make any presentations, programs, take pictures at club events, or anything else to benefit the club, please provide copies to Historian Sharon Marburger for inclusion in the All American Club Award application. This is a great way to preserve the club's history.

MINERAL MONKEYS



Hello Monkeys! This month's puzzle contains some fossils in Nebraska. I have used simple names, rather than the genus or who discovered them. Have fun searching!

BEAR

FERRET

PRONGHORN

BISON

HYAENA

RHINO

CAMEL

LLAMA

SABRE CAT

CRANE

MAMMOTH

SEA LIZARD

DOG

MASTODON

TAPIR

ELK

MUSK OX

TORTOISE

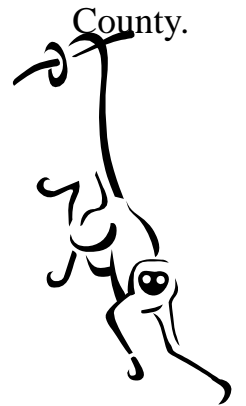
EQUUS

OREODONT

TUSKER

L	W	B	I	S	O	N	E	S	I	O	T	R	O	T
E	P	N	A	E	Q	R	A	O	C	T	I	Y	G	M
M	A	S	T	O	D	O	N	N	H	R	N	A	E	U
A	E	C	A	I	E	C	T	I	T	N	M	L	J	S
C	U	R	P	R	O	N	G	H	O	R	N	C	T	K
O	W	T	I	L	M	C	O	R	M	E	C	S	I	O
B	E	A	R	V	L	O	D	T	M	W	B	E	R	X
L	M	C	X	E	Q	U	U	S	A	V	A	A	W	Q
A	H	O	D	P	R	V	R	A	M	A	L	L	F	L
N	Y	L	J	T	N	G	S	O	D	K	R	I	F	I
S	A	B	R	E	C	A	T	N	W	L	P	Z	C	F
M	E	O	D	R	R	V	R	A	R	E	A	A	R	C
H	N	D	P	R	A	T	N	O	D	O	E	R	O	D
L	A	D	P	E	N	W	T	H	O	D	P	D	V	R
N	J	G	T	F	E	D	P	T	U	S	K	E	R	C

See if you can
figure out which
fossils have
been found in
Lancaster
County.



*Puzzle manually created by
Sharon Marburger.*

AUGUST FIELD TRIP

by Jim Marburger, Field Trip Chairman

The field trip to the Ron Coleman Quartz Mine in Jessieville, Arkansas is set for August 19-22, 2011. Since the location is about 600 miles from Lincoln, we plan to travel on Friday (19th) and Monday (22nd), which leaves Saturday and Sunday for collecting.

There is a single entry and collection fee for the entire day which allows you to leave and re-enter as you wish. A complementary mining bag is included with the fee as well as the guarantee of finding specimens. Collect as much as you like, and if you desire more than one mining bag, they can be purchased for \$.50 each.

The mining area is open 7 days a week, 8:00 a.m. to 5:30 p.m. during the spring and summer. Admission: ages 0-6, free; 7-16, \$5.00; 17-54, \$20.00; and over 55, \$15.00.

Camping is available, within walking distance, at the RV Park for \$12.50 per night. The shower/bathroom building and Laundromat are included in the fee. There are 24 spaces with one "pull-through" space, and all spaces have water and electricity. Ten of the spaces have sewer hookups and there is a dump station available to others. Picnic tables are scattered throughout the park. Best of all for us rockhounds, there is a concrete slab with a water faucet for washing

off crystals and ourselves after a hard day's dig. For those who like to fish after collecting, there is a pond within walking distance.

After digging for quartz, we plan to head for Crater of Diamonds State Park, which is about 60 miles from the quartz mine. The entrance fee to search for diamonds is \$7.00 for adults; ages 6 to 12, \$4.00; and children under 6 are free. The collection area is a 37½-acre plowed field of an eroded, gem-bearing volcanic pipe. Historic structures, old mining equipment, washing pavilions, and sun shelters are located on the field. Diamond mining tools are available for rent or purchase. The park staff provides free identification and certification of diamonds.

Crater of Diamonds State Park has 47 sites capable of handling 70-foot rigs, tent pads, 50 amp power, water and sewer hookups. Supplies are available in the newly renovated visitor center or in nearby Murfreesboro.

I would appreciate knowing in advance if you plan to join us on this field trip. With the high price of fuel, consider carpooling/cost sharing. For example, Sharon and I have a travel trailer but we plan to carpool with a "tenter". This will be a fun trip, and can be even more fun by sharing your ride. You won't want to miss out!



LINCOLN CURIOS ROCK SHOP

6625 Burlington - Lincoln, NE 68507 [Park in alley]

(402) 310-3307

► SPECIALIZING IN ARIZONA PETRIFIED WOOD ◀

- ◆ Rough stones and fossils for the hobbyist
- ◆ Polished stone items for interior décor
- ◆ Great selection of tumble-polished stones
- ◆ Natural petrified wood for landscaping

Open Tuesday thru Saturday
 10 a.m. - 6 p.m.

LEGISLATION

Obama Administration Abandons Wilderness Plan

*Excerpts taken from article published on foxnews.mobi,
Jun 1, 2011 11:42 p.m. EDT*

The Obama administration is dropping a controversial plan to restore eligibility for federal wilderness protection to millions of acres of undeveloped land in the West after the GOP-led House put up a strong fight.

Interior Secretary Ken Salazar said in a memo Wednesday that his agency will not designate any of those public lands as “wild lands.” Instead Salazar said officials will work with members of Congress to develop recommendations for managing millions of acres of undeveloped land in the West. A copy of the memo was obtained by The Associated Press.

Salazar’s decision reverses an order issued in December to reverse a Bush-era policy that opened some Western lands to commercial development.

...

Republican governors in Utah, Alaska and Wyoming, filed suit to block the plan, saying it would hurt their state’s economies by taking federal lands off the table for mineral production and other uses.

Sen. Orrin Hatch, R-Utah, hailed Salazar’s reversal “Since the majority of land in Utah is owned by the federal government, it is critically important to strike a balance between the needs of our local communities and the protection of public lands that truly do have wilderness characteristics rather than

pandering to environmental extremists,” Hatch said. “Today’s announcement is a positive step toward restoring that balance.”

Rep. Scott Tipton, R-Colo., a member of the House Natural Resources Committee, also cheered the announcement, calling it a “positive.”

“I’m glad to see the administration move in the right direction on this,” he said. “We all share the common bond of loving our public lands, and ensuring access to them is important. We will continue to be vigilant and make sure that future designations of public lands are made by consensus, not by executive fiat.”

William Meadows, president of The Wilderness Society, said he was deeply disappointed at the decision, which he said ignores the Bureau of Land Management’s obligation to protect wilderness values.

“Without strong and decisive action from the Department of Interior, wilderness will not be given the protection it is due, putting millions of acres of public lands at risk,” Meadows said.

Bob Abbey, director of the land management bureau, said the December directive would not have required protection for any particular areas. Designation as wild land could only be made after public comments and review and would not necessarily prohibit motor vehicle use or the staking of new mining claims, Abbey said.

CHANGES IN CALIFORNIA’S GOLD PANNING LAW

Excerpt taken from foxnews.com, Jun 1, 2011, By Stephen Clark

Fortune seekers hoping to strike it rich in California’s ongoing gold rush may find their dreams dashed by new environmental rules that state lawmakers say are too costly to enforce.

Mining groups that outfit treasure hunters say an economic analysis by the California Department of Fish and Game shows at least \$23 million per year is generated from small-scale miners trying their luck at locating gold in river beds.

But California’s Legislature is trying to slash funding after learning that new rules devised by

regulators to protect fish would cost taxpayers \$1.8 million each year for permitting, administration, inspection and enforcement. The state collects only \$373,000 in permit fees, creating a deficit that lawmakers say is too costly to overcome.

A draft outline to slash the mining program passed budget subcommittees in both chambers. The full Legislature has to approve it before the cuts are finalized and the independent fortune hunter is denied permitting.

Read more: <http://www.foxnews.com/politics/2011/06/01/fortune-seekers-bemoan-potential-end-dredge-gold-mining-california/#ixzz1OdnkiU4F>

STANDING COMMITTEES CHAIRMEN

Audit	John Harrison
	James Marburger
	Ed Dvorak
Christmas Party	Edward Ridge
Education / Librarian	Charles Wooldridge
	Judy Cropp
Facebook	Andrew Tiedje
Field Trips	James Marburger
Geology Day Coordinator	Aulden Stewart
Grinding Party	Aulden Stewart
Historian	Sharon Marburger
Legislative Liaison	Andrew Tiedje
Membership Record	Edward Ridge
MWF Liaison	Vera Lyman
Programs	Richard Peterson
Property	James Marburger
Refreshments / Door Prizes	Mary Pittard
Scholarship	Vera Lyman
Show—2012	Ed Dvorak
Swap—2012	Richard Peterson
Website	Jim Atkins
Youth Activities	Stella Thiessen
	Vera Lyman
	Kay Jurgens

ADVERTISING, SUBSCRIPTION, AND MEMBERSHIP INFORMATION

Advertising by rock / hobby business or interest is permitted with the approval of the Board of Directors. Contact the Editor with your proposed ad. The rate is set at \$20.00 per full page; \$10.00 per 1/2 page; \$5.00 per 1/4 page (minimum) per issue, paid in advance to the Club treasurer. Ads will be placed throughout the newsletter as space permits.

Subscription to the Pick & Shovel is \$15.00 per year for mailed copy.

Membership dues for the Lincoln Gem & Mineral Club are as follows:

- Adults (age 16 and over) - \$15 per year or \$25 per couple (within the same household)
- Juniors - \$2 per year (with a responsible adult)

All new memberships must be accompanied by a written application. Prospective members must gain Board approval and attend one regular meeting before being approved for membership.

LONG RANGE PLANNING & BY-LAWS COMMITTEE

1 year	Edward Ridge
	Robert Cropp
2 years	Charles Wooldridge
	Sharon Marburger
3 years	Vera Lyman
	John Harrison

NOMINATING COMMITTEE

3 years	Brad Nielsen
	Roger Pittard
2 years	Robert Cropp
	Judy Cropp
1 year	Vera Lyman
	Edward Ridge

Answers to Mineral Monkeys' puzzle

L	W	B	I	S	O	N	E	S	I	O	T	R	O	T
E	P	N	A	E	Q	R	A	O	C	T	I	Y	G	M
M	A	S	T	O	D	O	N	N	H	R	N	A	E	U
A	E	C	A	I	E	C	T	I	T	N	M	L	J	S
C	U	R	P	R	O	N	G	H	O	R	N	C	T	K
O	W	T	I	L	M	C	O	R	M	E	C	S	I	O
B	E	A	R	V	L	O	D	T	M	W	B	E	R	X
L	M	C	X	E	Q	U	U	S	A	V	A	A	W	Q
A	H	O	D	P	R	V	R	A	M	A	L	L	F	L
N	Y	L	J	T	N	G	S	O	D	K	R	I	F	I
S	A	B	R	E	C	A	T	N	W	L	P	Z	C	F
M	E	O	D	R	R	V	R	A	R	E	A	A	R	C
H	N	D	P	R	A	T	N	O	D	O	E	R	O	D
L	A	D	P	E	N	W	T	H	O	D	P	D	V	R
N	J	G	T	F	E	D	P	T	U	S	K	E	R	C

Mail Exchange Newsletters to:
Lincoln Gem & Mineral Club, Inc.
P.O. Box 5342
Lincoln, NE 68505-0342
Or e-mail newsletters to:
lgmsecretary@yahoo.com


PICK & SHOVEL

The *PICK & SHOVEL* is the official publication of the Lincoln Gem & Mineral Club, Inc., Lincoln, Nebraska. Articles and items appearing within may be reproduced in other club bulletins, provided proper credit is given to the *PICK & SHOVEL* and the author, and that a reprint of the article is sent to the editor of the *PICK & SHOVEL*.

Your PICK & SHOVEL staff:

Publisher: Lincoln Gem & Mineral Club, Inc., P.O. Box 5342, Lincoln, Nebraska 68505-0342
Editor: Sharon Marburger, P.O. Box 64, Hickman, Nebraska 68372, E-mail: lgmsecretary@yahoo.com
Circulation: Vera Lyman, 402-464-6089
Reporters: All members are encouraged to submit articles, poetry, or drawings.

A special thanks to this month's contributors:

Richard Lieb, Jim Marburger, Steve May, Richard Peterson, Roger Pittard, and  Wooly & Jackie! 