

PICK & SHOVEL



Lincoln Gem & Mineral Club Lincoln, Nebraska
www.lincolngemmineralclub.org

BOARD MEETINGS

All Board meetings are held at 6:30 p.m. at Gere Library, meeting room 1, unless otherwise noted.

August 25, 2010

October 6, 2010

November 3, 2010

December 1, 2010

GENERAL MEETINGS / ACTIVITIES

All activities are held at 7:00 p.m. at the Bethany Park Shelter, unless otherwise noted.

June 19, 2010

**Rock Party to do maintenance on Club cases
Roger & Mary Pittard's residence
(see article on page 9 and map on page 10)**

July 11, 2010

Grinding Party (Pioneer Park Nature Center)

September 16, 2010

October 21, 2010

November 18, 2010

December 12, 2010
Christmas Party

PRESIDENT'S MESSAGE

Well, June is upon us already.

On Memorial Day weekend, Roger Pabian and I were down somewhere in Southeast Nebraska on a field trip when I saw a sight I had not seen before. Looking east, the view was of three otherwise green hillsides, covered in white, almost as dense as if covered with snow. The whole horizon was abloom with wild daisies. It was a spectacular view to behold. The light breeze carried the serenade of brown thrashers, orioles, and wrens. Our natural world offers so many blessings just outside our back doors, and rock collecting is a great vehicle to get out and appreciate it.



We have a couple of activities to look forward to this month. There will be a "Rock Party" on June 19 at the Pittard's down near Geneva, Nebraska. We will get out the new cases and apply a good coat of varnish on them. See detail on pages 9-10 of this newsletter. Be sure to wear old clothes!

While out with Roger, I learned something I often suspected, but was never quite able to prove. It seems Lakers evolve over the years into honey agates which, in turn, evolve into bird droppings. I always wondered why there were more bird droppings than birds ... well you learn something new all the time. Thanks again, Roger, for your pearls of wisdom.

REFRESHMENTS SCHEDULE

Sep. 16:	Bar cookies	Jayne Beer Stella Thiessen
Oct. 21:	2 pies each	Charles Wooldridge G & A Ford
Nov. 18:	2-3 doz. Cookies ea.	Karen Messenger Shirley Rockel
Dec. 12:	Christmas Party—Potluck Supper	

SPECIAL ANNOUNCEMENTS

LGMC's 1957 Club President, Richard Hedges, has passed on. Below is an excerpt of the obituary published by the Lincoln Journal Star:

Richard Duane Hedges, son of Charles and Valerie (Worrell) Hedges, was born August 18, 1935 in Lincoln. The family spent several years in California during World War II. They returned to Nebraska and Richard's father returned to the water well business. Richard also went into the water well business.

A man of many interests, he hunted, collected and cut gems of many kinds. He enjoyed photography and black powder shooting (muzzle loading). He was interested in history and he and Lucille traveled to Europe several times.

Survivors include his wife, Lucille; son, Michael, daughter-in-law, Charlette; grandsons, David and Jonathan Hedges, granddaughters, Audrey and Katharen Hedges, all of Lincoln; granddaughter, Emily (Paul) Rugar and great granddaughter, Marla Dawn Rugar, all of Rogers, Minn. Preceding Richard in death was his son, Daniel John Hedges, who passed away November 9, 2009.

Funeral services were held Thursday, June 3, 2010, at Zion Evangelical Lutheran Church. Cremains will be scattered elsewhere at a later date. In lieu of flowers, the family suggests memorials be directed to Zion Evangelical Lutheran Church.

UPDATES TO WHO'S WHO

Addresses, phone numbers, and other contact information may be obtained from Secretary Marburger or Treasurer Lyman.

Welcome to new members Shari Nelsen and Linda Guenter.

REGIONAL SHOWS

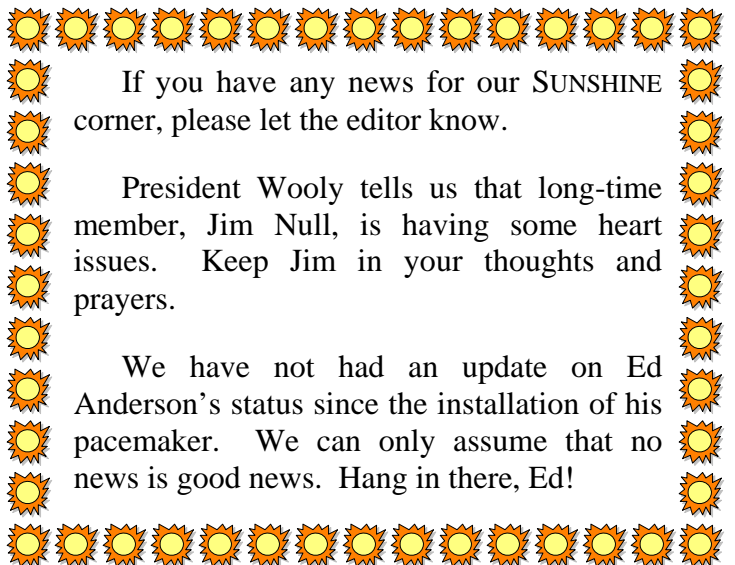
10-12: Park Hills, MO. Mineral Area Gem & Mineral Society's Rock Swap; Missouri Mines State Historical Site, Hwy. 32, 1.5 miles west of U.S. Hwy. 67; CONTACT: Lloyd or Betty Manler, (573) 431-2951.

12: Skokie, IL. Chicago Rocks & Minerals Society's Geodefest; St. Peter's United Church of Christ, 8013 Laramie Ave; Sat. 1-5; CONTACT: Craig Heinze, 1131 Hampton Harbor, Schaumburg, IL 60193.

19-20: Ozark, MO. Ozark Mountain Gem & Mineral Society's Ozark Mountain Gem Fair; Finley River Park, Barn at Rodeo Arena; Sat. 9-6, Sun. 10-4; CONTACT: Charlie Smith, (417) 887-4755 or Janet McWilliams, (417) 886-8532.

26-27: Osage Beach, MO.*NEW LOCATION***** Osage Rock and Mineral Club's 9th Annual Gem, Jewelry, Rock, Mineral, & Fossil Show; **The Inn at Grand Glaize**, 5142 Hwy. 54; Sat. and Sun. 11-5; CONTACT: Recorded information line (417) 532-4367, rvarvel@fidnet.com (please put "GEM SHOW" in the subject line).

SUNSHINE



PETE'S NOTES

By Richard Peterson

In 1992, the American Federation of Mineralogical Societies (AFMS) established under their umbrella the American Lands Access Association (ALAA). The ALAA is the Federation's lobby in Washington and elsewhere. Many organizations have lobbyists working to promote a wide variety of agendas. For example, the National Rifle Association lobbies for citizens' gun rights while the American Medical Association supports the medical profession on issues that are in their best interest. The list of Washington lobby organizations is long and influential.

In a nutshell, the ALAA believes there are too many restriction on the "use of public and private lands for educational and recreational purposes". The ALAA fights against "expanding federal ownership of land and ... other attempts to establish additional wilderness areas under federal control". The ALAA website goes on the say, "The entire future of this hobby depends upon your ability to be able to collect materials. Federally Managed Lands are our only salvation." They go on, "If we lose our rights to collect on Federally Managed Lands, and continue to have private lands closed off, we will only be able to collect in our own backyards." Readers can decide for themselves where they stand on these issues. Check out their website at <http://www.amlands.org/history.htm>.

HELPFUL TIP:

What to carry on your person - This is what I carry on a day trip to the gravel bars of Nebraska. My car keys are in the snapped, breast pocket of my overalls. My overalls are Key brand, blue denim, comfortable ... no belt to restrict movement. In the other breast pocket is a stripped down version of my wallet. Included is my drivers license, a credit card, health insurance card, and another picture ID, all of which are plastic. If on more than a day trip, the rest of my wallet is hidden out of sight inside my vehicle.

My walking stick is in one hand, my digging tool in the other. The digging tool is made from the working end of an archeologists trowel (Marshalltown brand) securely attached into the handle of a 14" baseball bat, the size they give away as a promotion at

games. The tool is used to flip rocks over for a second look. This limits the need to bend down to loosen and pick up, then examine the potential keepers. The trowel is also ideal to carefully remove delicate fossils and larger finds.

I carry two, sturdy cloth collection bags with carry straps. One is for rocks, the other for fossils and fragile items. The straps are hooked on the forked top of my walking stick. If the bags become cumbersome, like when crossing a fast moving stream, they are stowed in my backpack. When the bags become a burden, like at days end on the walk back to my vehicle, the walking stick with the bags can be pulled alongside with one hand, travois-style. This might sound a bit awkward but it suits me. A third, smaller bag with a drawstring is carried in my overall pants pocket and is reserved for those finds I don't want arrive home without.

Instead of a collection bag, some prefer a large plastic bucket with a sturdy handle. This is especially useful in northwest Nebraska where your vehicle is usually not far away and your finds tend to be larger (and heavier) than river gravel. Others prefer to hand carry their bag while some wear a sturdy vest with ample pockets to stow their finds. All these have their advantages, so choose the method best for you and your collecting situation.

My head gear is a soft brimmed hat, wide enough to shade my face and the back of my neck. My loose fitting cotton, long sleeved shirt is worn no matter how hot it gets. This aids cooling, protects against sunburn, and discourages the biting critters.

AND THE WORD IS ...?

For this month, the mineral name is from the Greek meaning, "heavy", an allusion to the mineral's high specific gravity. It is used in oil-well-drilling muds and in the manufacture of glass and paints.



Last month's answer is, "What is GYPSUM?"

www.mii.org/Minerals/photogyp.html



GENERAL MEETING MINUTES

May 20, 2010, Bethany Park Shelter

The meeting was called to Order at 7:06 p.m. by President Charles Wooldridge. Twenty adult members, two juniors, and two visitors were present. Shari Nelsen and Linda Guenter became the club's newest members.

OLD BUSINESS:

The minutes of the April meeting were published in the Pick & Shovel. Roger Pittard moved to accept the minutes as printed, second by Karen Messenger. Motion carried. The Treasurer's report for April was read by Treasurer Lyman. Jim Marburger moved to accept the report as read, second by Richard Peterson. Motion carried.

Jim Marburger related the details of the Hutchinson, Kansas/Jet, Oklahoma field trip planned for the Memorial Day weekend. Jim also said he was looking for a field trip leader to head up the Tepee Canyon and tourmaline trip in July. No one volunteered.

The May rock/grinding party will be held at Roger Pabian's residence on Sunday, May 23 at 6:00 p.m.

The June rock/grinding party will be held at Roger and Mary Pittard's residence on Sunday, June 19 at 1:30 p.m. The purpose of this gathering is to apply a finish to the ten new display cases built last year. A potluck will follow the maintenance party. Everyone is to bring a covered dish; Pittards will supply the hot dogs and buns.

President Wooldridge gave a reminder about the July Grinding Party at the Pioneers Park Nature Center. It is July 11 from 1:00 p.m. until 4:00 p.m. This year we will hold a potluck in the park following the Grinding Party. The club will provide hot dogs, buns, condiments, and charcoal. Attendees are to bring covered dishes.

NEW BUSINESS:

President Wooldridge announced that member Jim Null is having heart problems, and to keep him in our thoughts and prayers.

The Board approved for Robert Cropp to build up to five new display cases this year, as replacements for some of our old, worn out cases.

Jayne Beer and Stella Thiessen are responsible for providing bar cookies to the September 16 meeting.

The meeting was adjourned to refreshments and program at 7:37 p.m. on a motion by Roger Pabian, second by Karen Messenger. Motion carried. The program was a video on the creation geology of the Andes Mountains.

Respectfully submitted,

Sharon Marburger

BOARD MEETING MINUTES

The May Board meeting minutes will be published in the September Pick & Shovel, following their approval.

MWF SPRING MEETING REPORT

By Sharon Marburger

The MWF spring meeting was held in Columbia, Missouri on May 8, 2010. Those in attendance had a moment of silence for the 28+ hobby family members who passed on since the Fall 2009 meeting.

Conventions and shows are in the planning stages through 2012. The Board said they would love to have another show in Lincoln, Nebraska - as long as we don't change our show dates. I told them Lincoln would be pleased to host a show/convention sometime

after 2013, but when I told them our show is on the first weekend in April now, they said that was really too early for a Federation show. Unless we work out some logistical matters, it doesn't sound like Lincoln will be hosting another Federation show any time soon.

The By-laws amendment to discontinue the Federation's share of show profit passed overwhelmingly.

continued on page 10

FIELD TRIP TO HUTCHINSON, KANSAS & JET, OKLAHOMA

By Sharon Marburger

MEMORIAL DAY WEEKEND, MAY 29 - 31, 2010.

Jim and I headed out around 4:15 p.m. on Friday, May 28. The trip from Lincoln, Nebraska to Hutchinson, Kansas is about 250 miles. Since no other LGMC club members were able to make the trip, we chose to take our time and not keep to a schedule. We decided to stop and spend the night in the City Park in Minneapolis, Kansas. It was a beautiful spot and the bad weather did not find us.

Early Saturday morning found us moseying down a county road to Rock City, Kansas.



Here, we found huge concretions that looked totally out of place. Who would have suspected one could find rocks like this out on the open prairie?

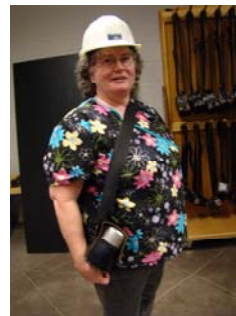


I selected this rock, but Jim didn't think it would fit in the back of the van.

We drove the remaining distance to Hutchinson, arriving at the Kansas Underground Salt Museum at 8:55 a.m., just in time for the first tour of the day.



The Museum itself is 650 feet beneath the visitors' center. Visitors are required to follow the same safety procedures as the miners, although the working mine is two miles away. A short safety video was presented after which we were outfitted with our personal rescue devices and hard hats. The personal rescue device is a mini oxygen canister that is supposed to provide enough breathable air to allow one to escape the mine should the unthinkable happen.



I was somewhat hesitant to do this tour, especially when they crammed us like sardines into the elevator to make the descent to the museum. There were two elevator cars, stacked. The first group of 15 people entered the car, then it lifted enough to load the bottom car with 15 more people. Then began the descent. I am somewhat claustrophobic, so it was an internal challenge for me - being jammed in a small space packed with people, which space then proceeded to go pitch black, with not a speck of light!! They tell me the descent took only 90 seconds

FIELD TRIP TO HUTCHINSON, KANSAS & JET, OKLAHOMA - CONT.



Tour guides tell the history of the underground museum, which includes mining, transportation, equipment, and geology exhibits.

All equipment and machinery must be dismantled before it is lowered into the mine. Once there, it is reconstructed, but it never looks the same as it did above ground. And, nothing is ever taken back up for disposal.



We took the Dark Ride which is a guided tour on a tram into an undeveloped portion of the mine. Several geologic formations and anomalies were highlighted and we also had the opportunity to collect a souvenir piece of salt. The whole tour took about 1½ hours.

The museum also includes an exhibit about Underground Vaults & Storage. The mine is a constant 69 degrees and the humidity never changes, making it the perfect environment for storing valuable items. The movie industry is the largest single "client" of the underground vaults, and several authentic movie costumes were on loan from Sony and Warner Bros.



Since no one else was with us, we decided to leave the Kansas Cosmosphere and Space Center tour for another trip. Instead, we took the scenic route to Cherokee, Oklahoma. After driving all the way around Salt Plains National Wildlife Refuge, we ended up at the Cherokee RV Park. We were later grateful

for this decision, when the severe thunderstorms came through Sunday evening and hammered the state park. We never even saw a drop of rain!

We were up before dawn on Sunday, as the selenite dig area is open from sunrise to sunset. We arrived about 20 minutes after sunrise to a totally deserted dig area. It was an awesome sight. You drive through typical Kansas prairie and farmland, then go around a corner into a barren wasteland.



We had the place to ourselves until about 9:00 a.m. It was easy digging and using the garden sprayer to uncover crystals worked very nicely.



FIELD TRIP TO HUTCHINSON, KANSAS & JET, OKLAHOMA - CONT.

Shortly after 9:00 a.m., our friends from the Denver Gem & Mineral Guild joined up with us. There were eight Denver members at the dig site while we were there.



The temperature was quite comfortable, with a nice breeze blowing, until about 11:00 a.m. The breeze died down and it was HOT!! With thunderstorms expected that afternoon, the humidity was also quite high. Jim and I decided shortly thereafter to pack it up and return to camp.

As we were leaving, we marveled at the number of people who had arrived while we were busy with our noses in holes in the ground. We counted 45 vehicles, most of which contained families. It was amazing how the desolateness was transformed into a “mini city”. This picture of an unknown family is representative of those who spent the day on the salt flats.

The return trip home was uneventful. We had a great time and were sorry it couldn't have been shared with some of our LGMC friends.



PEBBLE PUPS



Hello Pups! This month is a lazy, summertime puzzle. How many activities can you find? Don't forget to take a drink!

barbeque
 crystal hunting
 field trips
 fishing
 fossil dig
 lemonade
 mineral find
 picnic
 rock collecting
 swimming
 summer school
 vacation

L	W	U	P	N	A	E	D	A	N	O	M	E	L	B
G	N	I	H	S	I	F	M	C	X	W	S	L	B	A
D	P	R	V	W	Q	O	X	S	A	E	W	L	J	R
S	I	F	L	C	X	S	N	U	T	R	I	K	M	B
P	D	P	R	I	Y	S	G	M	H	M	M	A	A	E
I	V	W	T	N	G	I	J	M	L	J	M	L	L	Q
R	O	C	K	C	O	L	L	E	C	T	I	N	G	U
T	D	P	R	I	R	D	B	R	S	S	N	M	F	E
D	I	F	L	P	Y	I	W	S	L	J	G	I	F	L
L	M	C	X	W	Y	G	Q	C	N	M	C	X	W	K
E	C	R	Y	S	T	A	L	H	U	N	T	I	N	G
I	P	N	A	E	D	A	C	O	D	P	R	V	W	Q
F	W	V	A	C	A	T	I	O	N	W	M	C	X	W
S	L	B	A	D	N	I	F	L	A	R	E	N	I	M
I	F	L	D	P	R	V	W	Q	P	M	C	X	W	I

Puzzle created by Sharon Marburger.

COLLECTING ROCKS - PART 3

Excerpt taken from an article written by Rachel M. Barker, U.S.G.S.

Rock-forming and rock-destroying processes have been active for billions of years. Today, in the Guadalupe Mountains of western Texas, one can stand on limestone, a sedimentary rock, that was a coral reef in a tropical sea about 250 million years ago. In Vermont's Green Mountains one can see a schist, a metamorphic rock, that was once mud in a shallow sea. Half Dome in Yosemite Valley, Calif., which

now stands nearly 8,800 feet above sea level, is composed of quartz monozonite, an igneous rock that solidified several thousand feet within the Earth. In a simple rock collection of a few dozen samples, one can capture an enormous sweep of the history of our planet and the processes that formed it.

To be continued next month.

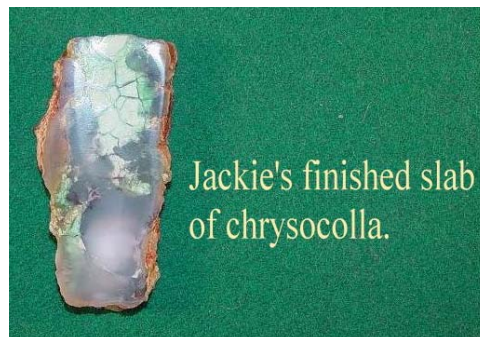
MAY ROCK / GRINDING PARTY

By Roger K. Pabian

The May 23rd Rock/Grinding Party was held at Roger Pabian's residence, with Charles Wooldridge; Jackie Barnhardt; Jayne, Brian and Corey Beer; Al Stewart; Richard Peterson; Ed and Patricia Dvorak; and Rowdy and Judy Cropp in attendance. The grinding was preceded by the usual potluck supper where everybody left the dining area well satisfied. Tex-Mex was the theme, with tacos, a southwestern style chicken, rice, and numerous other delicious entrees and desserts.

Most of the work was on cabochons, but some silver smithing issues were addressed as well as some primers on using the faceting machine, and how to interpret faceting diagrams. The parties have been quite successful in showing members the various lapidary and metal techniques.

The June Rock/Grinding Party will be held at Pittard's place in Geneva. The July Rock/Grinding party will be held in conjunction with the annual Grinding Party at the Pioneer Park Nature Center. A picnic will follow, the details of which will be provided in the July Pick & Shovel.



JUNE ROCK / GRINDING PARTY

By Roger Pittard

We'll be having our "Rock-grinding Party" for June at the Pittard's on Saturday, June 19, starting around 1:30. There will be one change from the norm, though, as this will be a "Display Case Painting Party" instead!! As usual, please bring a covered dish, and the Pittard's will provide the wieners and buns for a wiener roast, and coffee and iced tea (and country water) to drink. We are also hoping to have a little "Jam-Sing-a-long" following. So far, a banjo and two guitars plan to attend, so if you have an instrument, please bring it along and help us out!!

Some things to bring: a paint brush (the Club is providing the paint), some sawhorses and boards to make tables for the cases while painting, sun screen (we'll be working outdoors, if the weather permits), bug spray, lawn chairs, and, above all, plenty of enthusiasm, and a big appetite!!

Directions from Lincoln to the Pittard Farm (the address is 1013 Road K):

- I-80 West to Exit 353 at York (approx. 40 miles)
- From Exit 353, turn left (south) on US-81 toward Geneva (19+ miles)
- Take the Thirteenth Street exit (the first of 4 exits for Geneva), turn right, around a slight curve (¼ mile)
- Turn right (West) at gravel road (Road K), (this is on the north side of the Nu Star Pipeline Terminal) (go 2 1/3 miles)
- Turn Left into Pittard's driveway (grey house with maroon shutters)

MWF SPRING MEETING REPORT - CONTINUED

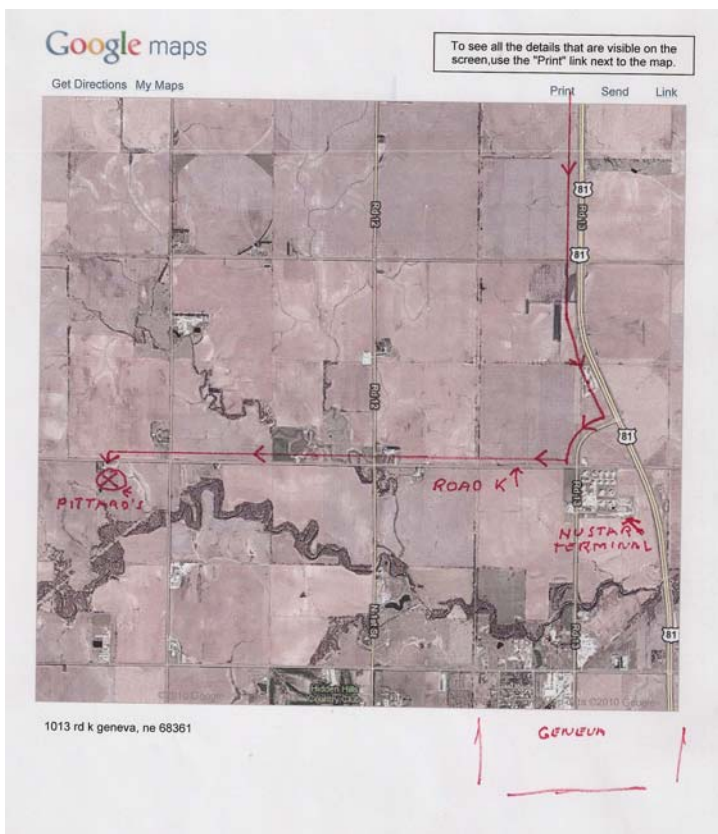
The Big Rapids Gem and Rock Club formed in Wisconsin and became a member of the Federation.

Jim Marburger is the Federation's new Membership Committee chair. John Crady is the new Micromounts chair.

The Nominating Committee has been unable to secure a nominee for the position of 2nd Vice-President. We are to notify them if we have a suggestion.

Webmaster, Cindy Root, is making a lot of modifications to the Federation website. Clubs will be able to find links to their own websites, plus a section is set aside for individual clubs to post pictures and other items.

JUNE ROCK / GRINDING PARTY



							E	D	A	N	O	M	E	L	B
G	N	I	H	S	I	F					S				A
							O		S		W				R
S				C	S		U			I					B
P				I	S		M			M					E
I				N	I		M			M					Q
R	O	C	K	C	O	L	L	E	C	T	I	N	G	U	
T				I	D		R			N					E
D				P	I		S			G					
L							G	C							
E	C	R	Y	S	T	A	L	H	U	N	T	I	N	G	
I								O							
F		V	A	C	A	T	I	O	N						
					D	N	I	F	L	A	R	E	N	I	M

Answers to Pebble Pups puzzle.

J J & L Rocks & Minerals

P.O. Box 68
Hickman, NE 68372

John Harrison
Lee Harrison
402.792.2337

James Marburger
Sharon Marburger
402.792.2348

jimandjohn@jjlrocksandminerals.com
www.jjlrocksandminerals.com
jjlrocksmin – Ebay Username

Proudly serving
the hobby for
34 years

2010 BOARD OF DIRECTORS

President

Charles Wooldridge, 402-416-3233
charles.wooldridge@nebraska.gov

1st Vice-President

Roger Pittard, 402-759-4623
rogerp@dtmspeed.net

2nd Vice-President

Aulden Stewart, 402-483-1044
mmstewart@inebraska.com

Treasurer

Vera Lyman, 402-464-6089

Secretary

Sharon Marburger, 402-792-2348
lmgsecretary@yahoo.com

Board Member

Ed Dvorak, 402-946-3041
ed20649@windstream.net

Board Member

James Marburger, 402-792-2348,
jm24122@windstream.net

Board Member

Richard Peterson, 402-489-2996
padr20@yahoo.com

Board Member

Edward Ridge, 402-477-8469

STANDING COMMITTEES CHAIRMEN

Audit
 Christmas Party
 Education / Librarian
 Field Trips
 Geology Day Coordinator
 Grinding Party
 Historian
 Membership Record
 MWF Liaison
 Programs
 Property
 Refreshments / Door Prizes
 Scholarship
 Show—2010
 Swap—2011
 Youth Activities

John Harrison, James Marburger, Roger Pabian
 Edward Ridge
 Charles Wooldridge / Judy Cropp
 James Marburger
 Aulden Stewart
 Aulden Stewart
 Sharon Marburger
 Edward Ridge
 Vera Lyman
 Richard Peterson
 James Marburger
 Mary Pittard
 Vera Lyman
 Charles Wooldridge
 Richard Peterson
 Dan Cromer, Kay Jurgens, Vera Lyman

LONG RANGE PLANNING & BY-LAWS COMMITTEE

1 year Vera Lyman
 Roger Pabian

2 years Edward Ridge
 Robert Cropp

3 years Charles Wooldridge
 Phyllis Parks



Would you like to have your Pick & Shovel in color? It is available in full color on the club's website
www.lincolngemmineralclub.org
You may also request to receive the P&S via e-mail. Just send your e-mail address to the editor at lmgsecretary@yahoo.com.

NOMINATING COMMITTEE

3 years Robert Cropp
 Judy Cropp

2 years Vera Lyman
 Edward Ridge

1 year John Harrison
 Aulden Stewart

Advertising by rock / hobby business or interest is permitted with the approval of the Board of Directors. The rate is set at \$15.00 per full page; \$7.50 per 1/2 page; \$5.00 per 1/3 page; and \$3.75 per 1/4 page (minimum) per issue, paid in advance. Ads will be placed throughout the newsletter as space permits.

Subscription to the Pick & Shovel is \$10.00 per year for mailed copy.

Membership dues for the Lincoln Gem & Mineral Club are as follows:

Adults (age 16 and over) - \$10 per year
 Juniors (age 12-16) - \$2 per year (with a responsible adult)
 Couples - \$20
 Family membership (with children under age 12 years) - \$22 per year

Applications for new membership must be approved by the Board of Directors after applicant attends at least one meeting of the Club. Dues will be payable to the Treasurer following Board approval, with an additional, one-time \$5 registration fee.

Mail Exchange Newsletters to:
Lincoln Gem & Mineral Club, Inc.
P.O. Box 5342
Lincoln, NE 68505-0342
Or e-mail newsletters to:
lgmcsecretary@yahoo.com

PICK & SHOVEL

LGMC web address courtesy of James Atkins.
<http://www.lincolngemmineralclub.org>

Your PICK & SHOVEL staff:

Publisher: Lincoln Gem & Mineral Club, Inc., P.O. Box 5342, Lincoln, Nebraska 68505-0342

Editor: Sharon Marburger, P.O. Box 64, Hickman, Nebraska 68372, E-mail: lgmcsecretary@yahoo.com

Circulation: Vera Lyman, 402-464-6089

News Reporters: All Members

The *PICK & SHOVEL* is the official publication of the Lincoln Gem & Mineral Club, Inc., Lincoln, Nebraska. Articles and items appearing within may be reproduced in other club bulletins, provided proper credit is given to the *PICK & SHOVEL* and the author, and that a reprint of the bulletin is sent to the editor of the *PICK & SHOVEL*.

The purpose of this corporation shall be to study, promote an interest in, and disseminate knowledge of lapidary and various Earth Sciences including but not necessarily limited to Geology, Paleontology and Mineralogy. It shall be a particular purpose of the corporation to provide education in these fields to its members and the general public, especially to youth and student groups.

