

PICK & SHOVEL



Lincoln Gem & Mineral Club Lincoln, Nebraska
www.lincolngemmineralclub.org

BOARD MEETINGS

All Board meetings are held at 6:30 p.m. at Gere Library, meeting room 1, unless otherwise noted.

March 31, 2010 (April Meeting)

May 5, 2010
August 25, 2010
October 6, 2010
November 3, 2010
December 1, 2010

GENERAL MEETINGS / ACTIVITIES

All activities are held at 7:00 p.m. at the Bethany Park Shelter, unless otherwise noted.

March 18, 2010

March 21, 2010

Monthly Rock Party (The Jewelry Connection)

March 30, 2010

Pfizer Science Fair (Pershing Center)

April 3-4, 2010

Annual Gem & Mineral Show (Lancaster Event Ctr)

April 15, 2010
May 20, 2010
July 11, 2010

Grinding Party (Pioneer Park Nature Center)

September 16, 2010
October 21, 2010
November 18, 2010
December 12, 2010
Christmas Party

PRESIDENT'S MESSAGE

Hello, fellow Rock Hounds. Welcome to another edition of the Pick and Shovel. I would like to thank Sharon for all the hard work she puts into our newsletter each month. I always look forward to reading it.



We had to cancel Geology Day this year. It was unfortunate but necessary for safety's sake. I got a call in the morning from some folks out in the country who said they tried to get out of their lane, but visibility was very bad ... the snow was blowing so hard. I think it is important to always put safety first.

The February Rock Party was held at Roger Pabian's house. He has a large, open basement with lots of equipment. In addition to the usual cabbing equipment, there were a couple of faceting machines that kept people's attention for most of the evening.

The next Rock Party will be Sunday, March 21st at The Jewelry Connection in the Indian Village Shopping Center located at 13th and Arapaho Streets in southwest Lincoln. It will be hosted by club member and professional silversmith, Jayne Beer. The shop is located at the southwest corner of the shopping center, down the stairs. It is the only grey door with a window in it. The Party will start at 5 p.m. with the usual potluck supper. Silversmithing will be the focus of the evening. Members will be able to develop or expand their knowledge of silversmith techniques through hands-on activities. The fun and experience will be free, but individuals must purchase whatever supplies they use. Bring your own or try one of Jayne's interesting projects. I recommend you bring some of your cabs to set. Jayne says to dress warmly as it is sometimes cold down there.

PRESIDENT'S MESSAGE—CONT.

Susy McMahan had her knee surgeries and, according to reports, is recovering well. We wish her a speedy recovery and a quick return to club activities.

Vera has been making club smocks / aprons. See her if you would like to order one. They are looking very sharp. Thanks Vera!

Remember the SHOW is coming!!! Get your displays ready. See you at the March meeting!

Wooly

SPECIAL ANNOUNCEMENTS

ALL AMERICAN CLUB AWARD

Please remember to give to Sharon Marburger your articles, pictures, correspondence to your political representatives regarding land management, short stories of club outings, public activities, etc., for the 2010 All American Club Award Application. It is very easy to mail or e-mail these items to Sharon immediately following the activity; or you can bring them to a meeting. If you submit photos, identification of persons and locations would be appreciated. This information makes for a more entertaining end product, and it helps to preserve the club's history. So give your items to Sharon while memories are fresh and documentation is readily available.

MARCH GRINDING PARTY

Host: Jayne Beer
 When: Sunday, March 21, 2010
 Where: The Jewelry Connection, Indian Village Shopping Center at 13th and Arapahoe
 Why: Come learn silversmithing techniques while enjoying the company of fellow hobbyists. Bring your own project or try one of Jayne's.

Regardless, fun and knowledge will abound!

REMEMBER TO BRING YOUR CAMERA AND SNAP SOME PICTURES FOR THE P&S AND THE ALL AMERICAN CLUB AWARD APPLICATION.

NEW MEMBERS

Welcome to Andrew Tiedje and Kathleen Medcalf. These engaged individuals are the newest additions to the club. They have been long-time enthusiasts who are interested in all aspects of the hobby, including meteorites. Introduce yourself to them at the next meeting and make them feel a part of our geologic family!

REFRESHMENTS SCHEDULE

Mar. 18:	1 cake each	Ed Dvorak John Harrison
Apr. 15:	2-3 doz. cookies ea.	Vera Lyman Mary Pittard
May 20:	2-3 doz. cookies ea.	Richard Peterson Roger Pabian
Sep. 16:	bar cookies	Jayne Beer Stella Thiessen
Oct. 21:	Sign up and you get to choose the snack!	
Nov. 18:	Sign up and you get to choose the snack!	
Dec. 12:	Christmas Party—Potluck Supper	

MARCH PROGRAM

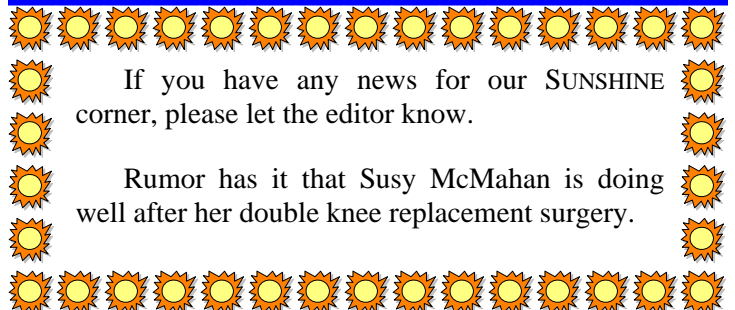
By Richard Peterson

This month's program will be on SEDIMENTARY AND VEIN AGATES. This DVD presentation, from the MWF Video Library, was the AFMS Award Winner in 2005. The story begins in the Black Hills of South Dakota, then moves around the world. We will learn how these agates were formed, and see pictures of some wonderful specimens. Included are agates from Tepee Canyon and Hell Canyon, plus the Fairburn, Bubble Gum, Nebraska Blue, and Dryhead agates from Montana and Wyoming, just to name a few. If you love agates, you won't want to miss this 45-minute video.

WANTED...

Articles, poetry, and event pictures for future issues of the Pick & Shovel. If you'd like to write a monthly column, or just an occasional article, please let Sharon Marburger know. All submissions are welcome, and will be published according to space availability.

SUNSHINE



PETE'S NOTES

By Richard Peterson

I recently learned that I've been diagnosed with an acute psychological disorder. I have decided to share this with you now, as I thought my readers should hear it from me rather than hearing it from another source.

Both my primary care physician and mental health therapist tell me that although it is acute (not chronic, thank goodness) it could affect my relationships with other people. Specifically, my interactions with others could turn nasty. In an effort to help others deal with this disorder, should they be so unfortunate, I offer the following. The symptoms are extreme irritability and restlessness brought on from living in isolation or within a confined indoor area for a prolonged period of time. I am told there is a seasonal component associated with the disorder. Treatment is not invasive and the symptoms, according to my doctors, should disappear with the arrival of the robins.

A year ago at this time, I was looking forward to walking the river bottoms looking for agates and anything else of interest. I knew nothing about what I would encounter ... well, almost nothing.

As part of our 2008 gem and mineral show, our club offered the attendees the opportunity to go a field trip with a club member as their host and guide. Wooly guided about ten of us on a day trip where we combed the gravel bars in the southeast corner of the state. I listened, observed, and soaked up the best I could his words of advice and bits of local knowledge.

Last year, I decided to go alone to the area on a weekly basis. This meant, however, I wouldn't have the luxury of a knowledgeable guide. I needed to overcome some apprehensions. To be continued ...

HELPFUL TIP: In the field, I could not get along without my walking stick. Mine is six feet long, or a bit more - about my height. It can be elaborate (i.e. metal, fiberglass, etc.) or simply a sturdy, more or less straight, dry stick cut the day of the trip. I prefer a dry, wood walking stick, lightweight but strong (very little bend), that can be saved and used again and again. Mine is forked at the top, which I find useful. Walking sticks can be marked at intervals that help with a given task. A notch or mark at your knee level is helpful in crossing streams and rivers. A stick serves as an extension of your arm to probe and dislodge things just out of reach, and to assist your balance when climbing slippery slopes. Used to push vegetation aside it can give you forewarning of obstacles along your path, including snakes. It can also serve as a deterrent.

AND THE WORD IS ...?

The name for this month's mineral is said to come from India. It is the principal ore of mercury. Native mercury, a liquid, is rare in nature and usually occurs with this mineral as heavy, tin-white metallic drops. What is ...?



Last month's answer is,

“What is MARCASITE?”

© Photo by John H. Betts

SAFETY - PART ONE

The following is an excerpt from the March 2010 *A.F.M.S. Newsletter* which was taken from a blog authored by Steve Beyer. Mr. Beyer writes for a website called *Singing to the Plants*. With spring coming, the information on handling snakebites is timely.

- Avoid panic. Get the patient to medical care calmly and quickly.
- Use the Sawyer Extractor. The Extractor can remove as much as 30 percent of Crotalid venom proteins if applied within three minutes. Use the Extractor as quickly as possible and then keep it on the bite for about thirty minutes. Because of the great suction it creates, no cutting is necessary. This should always be the first thing you do, even when evacuation is in progress.
- Remove rings, bracelets, or any other constricting jewelry on the affected limb, which may swell to as much as twice its normal size.
- Immobilize the bitten extremity with a splint, just as you would a fracture.
- Have the patient rest and keep activity to a minimum.
- Have the patient drink as much fluid as possible, in frequent small amounts, in order to maintain fluid volume and kidney flow.
- Remember that a snakebite is a contaminated puncture wound, and treat it as such.



GENERAL MEETING MINUTES

February 18, 2010, Bethany Park Shelter

The meeting was called to Order at 7:03 p.m. by President Charles Wooldridge. Twenty-two adult and three junior members were present. Three adult visitors were also in attendance.

ANNOUNCEMENTS:

A note from Phyllis Parks was read by President Wooldridge. Susy McMahan's double knee-replacement surgery put her in Bryan East.

OLD BUSINESS:

The minutes of the January meeting were published in the Pick & Shovel. Charlie Messenger moved to accept the minutes as printed, second by Jim Atkins. Motion carried. The Treasurer's report for January was read by Treasurer Lyman. Jim Marburger moved to accept the report as read, second by Karen Messenger. Motion carried.

Geology Day was cancelled due to a blizzard that weekend. Lincoln Parks Department has decided to not reschedule it, due to a full agenda.

A cache of old club vests was discovered. Members were able to try on samples to determine the sizes needed. Vera Lyman will begin sewing of new vests. Anyone interested in helping, please contact Vera. It was decided the cost of each new vest will be \$15.

The Mid-Winter Rock Swap and Silent Auction were a success. The club is able to give \$133.10 to the lapidary class. Richard Peterson agreed to chair the 2011 Swap.

Wooly briefly touched on the plans for the show. He reminded everyone that no staples or tape may be used on the tables and floor. Demonstrators and dealers are all lined up. The Dealer Breakfast will be held at the Event Center. Wooly stressed the fact that we need lots of volunteers to work setup on Friday and teardown on Sunday. Since we are at a new location, everyone's help will be needed.

Sharon Marburger reminded members that it is far easier to forward pictures, thank you notes, and any other documentation of club service (for the All American Club Award application) as the events happen. This allows individuals to readily be able to answer questions, and it gives Sharon the chance to put the application together as we go, rather than trying to do a rush job the month before entry deadline.

NEW BUSINESS:

The Midwest Federation spring meeting is slated for May 7-9 in Columbia, Missouri. Members were encouraged to attend. The AFMS annual show is being held in conjunction with the CFMS in Whittier, California on June 18-20.

The Pfizer-LPS Science fair will be held at Pershing Center on March 30. See Al Stewart, Ed Ridge, or Roger Pabian for more information.

No other new business was had. John Harrison and Ed Dvorak were reminded of their host duties for the March meeting.

The meeting was adjourned to refreshments and program at 7:36 p.m. on a motion by Jim Marburger, second by Roger Pabian. Motion carried. The program was presented by George Corner, Collections Manager, Division of Vertebrate Paleontology, Nebraska State Museum. The program was on "Pleistocene (Ice Age) Mammals of Eastern Nebraska". Following the program, George identified specimens brought in by members.

Respectfully submitted,

Sharon Marburger

REGIONAL SHOWS

MARCH

13: Skokie, IL. *NEW LOCATION***** Chicago Rocks and Minerals Society's 61st annual silent auction; St. Peter's United Church of Christ, 8013 Laramie Ave.; Sat. 5:30 p.m. -10:00 p.m.; CONTACT: Jeanine N. Mielecki; (773) 774-2054; jaynine9@aol.com; www.chicagorocks.org.

13-14: Macomb, IL. Geodeland Earth Science Clubs, Inc.'s 30th Annual Show; Western Illinois Univ. Student Union, Murray St.; Sat. 10-6, Sun. 10-5; CONTACT: Dennis Bomke, 6240 Whimsy Hill Ln., Springfield, IL 62707, (217) 546-4096, dbomke@comcast.net.

20-21: Cedar Rapids, IA. Cedar Valley Rocks & Minerals Society's Annual Show; Teamsters Union Hall, 500 J St. SW; Sat. 8:30-6, Sun. 9:30-5; CONTACT: Marv Houg, 1820 30th St. Dr. SE, Cedar Rapids, IA 52403, (319) 364-2868, m_houg@yahoo.com.

BOARD MEETING MINUTES

February 3, 2010, Gere Library

The meeting was called to order at 6:34 p.m. by President Charles Wooldridge. Board members present were Charles Wooldridge, Roger Pittard, Al Stewart, Vera Lyman, Sharon Marburger, Jim Marburger, Ed Ridge, Richard Peterson and Ed Dvorak.

OLD BUSINESS:

Minutes of the January meeting were distributed. Jim Marburger moved to accept the minutes as printed, second by Richard Peterson. Motion carried. The Treasurer's report for January was distributed. Roger Pittard moved to approve the report, second by Al Stewart. Motion carried.

The Rock Swap was a success. Although there were fewer visitors, those who attended spent more swapper bucks than those last year.

Roger Pabian will host the February Grinding Party on the 21st. The potluck supper will begin at 6:00 p.m.

Geology Day is scheduled for February 14, 2010.

Wooly asked the Board members who are on the Show Committee to give an update. Jim and Sharon Marburger said the advertising is pretty much lined up. Al Stewart agreed to contact the Lincoln Chamber of Commerce to obtain space in their publication placed in local motels. Al also said he and Marilyn have enough ribbons for the show. Vera Lyman has obtained menu information for the dealer breakfast and the Board suggested which menu to use. Wooly reminded everyone that the new cases still need to be stained. It was agreed to wait until after the show because the cases are situated in the trailer in such a way that the entire trailer needs to be off-loaded to reach the cases. The cases will be placed at the back of the trailer following this year's show, for easy access. Wooly has arranged for a booth with someone who will identify antique jewelry. There will be NO appraisals.

NEW BUSINESS:

Membership applications were received. Jim Marburger moved to accept the application of Jackie Barnhardt, second by Ed Dvorak. Motion carried. Sharon Marburger moved to accept the application of Grace Cassel, second by Al Stewart. Motion carried. Jackie and Grace have attended the requisite meeting.

Treasurer Lyman reported that all Association dues have been paid for the year.

President Wooldridge informed the Board that member Susy McMahan is having double knee replacement surgery this month. A letter from long-time member Phyllis Parks was read.

Richard Peterson reported he has George Corner from the University scheduled to give the Program at the February meeting.

The meeting was adjourned at 7:50 p.m. on a motion by Jim Marburger, second by Roger Pittard. Motion carried.

Respectfully submitted,

Sharon Marburger

SHOW DISPLAYS

The Annual Show will be here before you know it. Do you have your display picked out? Please see **Ed Ridge** and let him know how many, and what type of, cases you will need for the show. There is still room for a large number of display cases. Let's WOW everyone with all of our spectacular displays!

DEALER BREAKFAST

The Dealer Breakfast will be held Sunday, April 4, 2010 at the Lancaster Event Center. The price for the breakfast is \$11. If you plan to attend, please pay Vera Lyman by March 18. The Dealer Breakfast is always a fun time, and the food is yummy! The buffet will consist of:

Scrambled eggs	Sausage links
Hash browns	Bacon
Pancakes	French toast
Fresh fruit	Coffee
Orange juice	

CLUB ATTIRE

Vera Lyman is taking orders for the new club attire. It is called by several names - vest, smock, apron. No matter what it is called, you want to be sure to get one. It is yellow with blue trim and will have the club logo imprinted on the back and pockets in the front. The price is a mere \$15 to cover the cost of supplies. If you have ordered a vest already, please make sure Treasurer Lyman receives your money. If you would like to help with sewing these items, please contact Vera. She would appreciate the help.

PEBBLE PUPS



Hello Pups! The meeting program this month is on agates, so I thought a puzzle naming several kinds of agates would be fun. Bring your completed puzzle to the meeting and see me to get your special prize.

Mrs. Marburger

T	A	B	C	D	E	F	G	H	I	J	E	C	A	L	Y	Z	A	R	C	BLUE LACE
E	C	A	L	E	U	L	B	K	L	M	N	O	P	Q	R	S	T	U	O	BOTSWANA
P	V	W	X	Y	Z	Z	Y	X	W	V	U	T	S	R	Q	P	O	N	L	BRAZILLIAN
E	M	L	K	J	I	S	W	E	E	T	W	A	T	E	R	H	G	F	D	BUBBLEGUM
E	E	D	C	B	A	R	R	Q	L	V	X	O	A	C	E	G	I	K	W	COLDWATER
C	L	N	P	R	T	V	X	Y	Z	B	D	F	H	J	L	N	P	R	A	CRAZYLACE
A	S	U	W	Y	A	B	U	B	B	L	E	G	U	M	D	G	J	M	T	DRYHEAD
N	P	S	Y	V	Y	B	E	H	K	A	M	P	Q	T	F	L	A	M	E	FAIRBURN
Y	L	L	E	B	W	O	S	A	C	K	F	H	K	M	O	R	U	X	R	FLAME
O	O	O	L	R	T	V	X	Y	Z	E	Q	L	V	X	O	A	C	E	R	LAGUNA
N	A	I	L	L	I	Z	A	R	B	S	R	R	Q	L	A	G	I	L	L	LAKE SUPERIOR
W	N	S	A	F	H	J	L	N	P	U	Y	Z	B	D	N	N	Y	A	Y	MONTANA
L	A	P	N	Q	L	V	X	O	A	P	L	J	D	H	A	F	J	G	J	MOSS
D	W	H	A	L	N	P	R	T	V	E	Q	L	V	G	T	K	B	U	B	NEBRASKA BLUE
N	S	G	C	Y	D	A	E	H	Y	R	D	R	S	N	N	R	R	N	R	SOWBELLY
U	T	N	N	J	H	Q	I	L	T	I	W	Y	Y	G	O	M	Y	A	Y	SWEETWATER
S	O	G	I	B	D	E	F	G	H	O	T	V	B	T	M	Q	L	V	X	TEPEE CANYON
B	B	T	T	R	F	N	R	U	B	R	I	A	F	L	N	P	R	T	V	TIN CAN ALLEY
R	P	V	D	Y	F	G	H	H	J	L	N	P	R	P	P	S	S	O	M	
Z	L	X	P	V	N	E	B	R	A	S	K	A	B	L	U	E	B	Y	E	

Puzzle created by Sharon Marburger.

Answers on page 10

COLLECTING ROCKS - PART 1

Excerpt taken from an article written by Rachel M. Barker, U.S.G.S.

Rocks Tell the Story of the Earth

The Earth is made of rock, from the tallest mountains to the floor of the deepest ocean. Thousands of different types of rocks and minerals have been found on Earth. Most rocks at the Earth's surface are formed from only eight elements (oxygen, silicon, aluminum, iron, magnesium, calcium, potassium, and sodium), but these elements are combined in a number of ways to make rocks that are very different.

Rocks are continually changing. Wind and water wear them down and carry bits of rock away; the tiny particles

accumulate in a lake or ocean and harden into rock again. The oldest rock that has ever been found is more than 3.9 billion years old. The Earth itself is at least 4.5 billion years old, but rocks from the beginning of Earth's history have changed so much from their original form that they have become new kinds of rock. By studying how rocks form and change, scientists have built a solid understanding of the Earth we live on and its long history.

To be continued next month.

FEBRUARY ROCK/GRINDING PARTY

By Roger K. Pabian

The fourth of a newly inaugurated series of grinding parties was held at Roger Pabian's residence on Sunday, February 21, 2010. Eleven members and guests participated and quite a few nice stones were turned out.

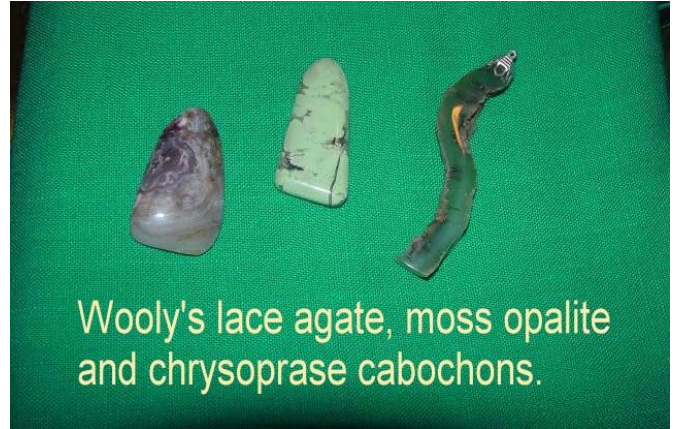
The party started with a pot luck supper that featured many excellent entrees and desserts. The entrees included a bison-eggplant casserole, hot wings, and sloppy joes. There were ample salads and several kinds of pies, cakes, and cookies for desserts.

Following the meal, the group went into the work shop and the grinding began. Several attendees - Roger Pabian, Charles and Karen Messenger, and Judy Cropp - are teaching themselves faceting. One of the interesting discoveries for the night was that there are right-handed and left-handed faceting machines, at least in the Ultra-Tec line. Charles' and Roger's machines are mirror images of each other. Most of the time was spent learning the parts of the machines and what they do.

Judith Bay, Charles Wooldridge, Rowdy Cropp, and Jayne Beer and son Corey spent much of the time grinding and finishing cabochons. Rowdy also spent some time drilling dinosaur bone for a future jewelry project.

The evening ended with quite a few finished stones, quite a few new techniques under the belt, and more enthusiasm for taking up new challenges.

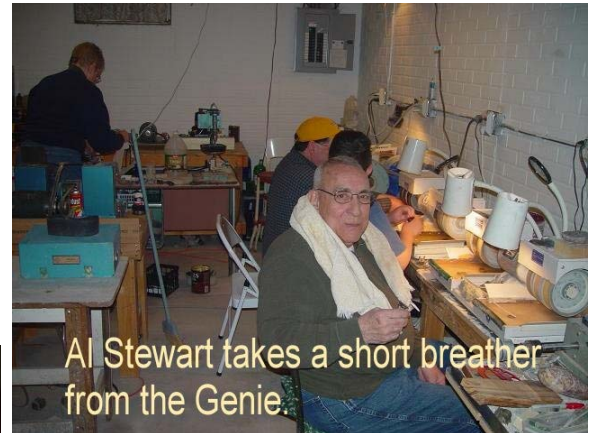
The only rule for the grinding party is that participants must bring some work project along such that they can teach other participants different techniques, and share their interests in gems, minerals, and other related areas.



Wooly's lace agate, moss opalite and chrysoprase cabochons.



Judy Cropp, Charles and Karen Messenger go over the intricacies of faceting.



Al Stewart takes a short breather from the Genie.



Al Stewart's production for the evening



Judith Bay's lace agate free form.



52nd Annual Show

Adults \$5
Children Under 12
FREE



Fossils Displays

There are fossils to look at and fossils to buy.



Rocks and Gemstones

You will find minerals, rocks, and gemstones on display and for sale.



Youth Activities

Kids activities include a gem dig, rock races, and hands on polishing a stone.



Dealers/Demonstrators

Dealers have their rocks, minerals, gemstones and jewelry for sale.

Demonstrators will be showing you how they do their craft.

www.lincolngemmineralclub.org

Lincoln Gem & Mineral Club Show

GEMS GALORE - And More



New Location...!!!
 Lancaster Event Center
 84th and Havelock Avenue
 Lincoln, Nebraska

Over 4000 FREE Parking Spaces

New Time...!!!
 April 3rd and 4th, 2010
 Hours
 Saturday - 9AM - 7PM
 Sunday - 9AM - 5PM

SAFETY - PART TWO

This article is for anyone who drives through gates. Most of us have to drive through gates at some point in our driving careers. Gates can be hidden by shrubs or trees, and they can swing in the wind. An unexpected swinging gate can cause a lot of trouble.

Look at the pictures below. The driver caught a gate that was probably hidden by the tree line as he rounded the corner. The set of photos shows us how lucky this driver was to not be seriously injured.

Photos distributed by Nebraska Safety.



BE CAREFUL OUT THERE!

FIELD TRIPS

By Jim Marburger

I am currently working on a couple of ideas for field trips - one trip could be a week-long trip and the other a day or overnight trip, whichever you choose. I will have more information next month.

If you have any ideas for field trips, please let me know. You can e-mail me at jm24122@windstream.net, call me at (402) 430-6703, or talk to me at a meeting.

AFMS/CFMS 2010 GEM SHOW

HIDDEN TREASURES

June 18-20, 2010

Whittier, CA

AFMS/CFMS Show and Convention

For more information, go to http://www.cfmsinc.org/shows/afms_cfms_show10/afms_cfms_noc_10.htm



T	A	B	C	D	E	F	G	H	I	J	E	C	A	L	Y	Z	A	R	C
E	C	A	L	E	U	L	B	K	L	M	N	O	P	Q	R	S	T	U	O
P	V	W	X	Y	Z	Z	Y	X	W	V	U	T	S	R	Q	P	O	N	L
E	M	L	K	J	I	S	W	E	E	T	W	A	T	E	R	H	G	F	D
E	E	D	C	B	A	R	R	Q	L	V	X	O	A	C	E	G	I	K	W
C	L	N	P	R	T	V	X	Y	Z	B	D	F	H	J	L	N	P	R	A
A	S	U	W	Y	A	B	U	B	B	L	E	G	U	M	D	G	J	M	T
N	P	S	Y	V	Y	B	E	H	K	A	M	P	Q	T	F	L	A	M	E
Y	L	L	E	B	W	O	S	A	C	K	F	H	K	M	O	R	U	X	R
O	O	O	L	R	T	V	X	Y	Z	E	Q	L	V	X	O	A	C	E	R
N	A	I	L	L	I	Z	A	R	B	S	R	R	Q	L	A	G	I	L	L
W	N	S	A	F	H	J	L	N	P	U	Y	Z	B	D	N	N	Y	A	Y
L	A	P	N	Q	L	V	X	O	A	P	L	J	D	H	A	F	J	G	J
D	W	H	A	L	N	P	R	T	V	E	Q	L	V	G	T	K	B	U	B
N	S	G	C	Y	D	A	E	H	Y	R	D	R	S	N	N	R	R	N	R
U	T	N	N	J	H	Q	I	L	T	I	W	Y	Y	G	O	M	Y	A	Y
S	O	G	I	B	D	E	F	G	H	O	T	V	B	T	M	Q	L	V	X
B	B	T	T	R	F	N	R	U	B	R	I	A	F	L	N	P	R	T	V
R	P	V	D	Y	F	G	H	H	J	L	N	P	R	P	P	S	S	O	M
Z	L	X	P	V	N	E	B	R	A	S	K	A	B	L	U	E	B	Y	E

Answers to Pebble Pup's puzzle

AFMS/CFMS 2010 Gem Show

Hosted by:
North Orange County Gem & Mineral Society

Games

Displays

Raffle Prizes

Gems & Jewelry

Sponsoring:
La Habra Youth

Admission: \$6.00
Children under 14 Free
(with an adult)

Fossils

Kids Room

Food

Free
Parking

HIDDEN TREASURES

June 18 - 20, 2010
Fri. - Sun. 10 a.m. - 5 p.m.

So. CA University of Health Sciences
16200 E. Amber Valley Dr. Whittier, CA 90604

Information: (626) 330-8974 - odwarthen@verizon.net
or (609) 698-2456 - donogden@aol.com
cfmsinc.org - noogms.com

JJ & L Rocks & Minerals

P.O. Box 68
Hickman, NE 68372

John Harrison
Lee Harrison
402.792.2337

James Marburger
Sharon Marburger
402.792.2348

jimandjohn@jjlrocksandminerals.com
www.jjlrocksandminerals.com
jjlrocksmin - Ebay Username

Proudly serving
the hobby for
34 years

2010 BOARD OF DIRECTORS

President

Charles Wooldridge, 402-416-3233
charles.wooldridge@nebraska.gov

1st Vice-President

Roger Pittard, 402-759-4623
rogerp@dtmspeed.net

2nd Vice-President

Aulden Stewart, 402-483-1044
mmstewart@inebraska.com

Treasurer

Vera Lyman, 402-464-6089

Secretary

Sharon Marburger, 402-792-2348
lmcsecretary@yahoo.com

Board Member

Ed Dvorak, 402-946-3041
ed20649@windstream.net

Board Member

James Marburger, 402-792-2348,
jm24122@windstream.net

Board Member

Richard Peterson, 402-489-2996
padr20@yahoo.com

Board Member

Edward Ridge, 402-477-8469

NOMINATING COMMITTEE

3 years	Robert Cropp Judy Cropp
2 years	Vera Lyman Edward Ridge
1 year	John Harrison Aulden Stewart

STANDING COMMITTEES CHAIRMEN

Audit	John Harrison, James Marburger, Roger Pabian
Christmas Party	Edward Ridge
Education / Librarian	Charles Wooldridge / Judy Cropp
Field Trips	James Marburger
Geology Day Coordinator	Aulden Stewart
Grinding Party	Aulden Stewart
Historian	Sharon Marburger
Membership Record	Edward Ridge
MWF Liaison	Vera Lyman
Programs	Richard Peterson
Property	James Marburger
Refreshments / Door Prizes	Mary Pittard
Scholarship	Vera Lyman
Show—2010	Charles Wooldridge
Swap—2011	Richard Peterson
Youth Activities	Dan Cromer, Kay Jurgens, Vera Lyman

LONG RANGE PLANNING & BY-LAWS COMMITTEE

1 year	Vera Lyman Roger Pabian
2 years	Edward Ridge Robert Cropp
3 years	Charles Wooldridge Phyllis Parks

Advertising by rock / hobby business or interest is permitted with the approval of the Board of Directors. The rate is set at \$15.00 per full page; \$7.50 per 1/2 page; \$5.00 per 1/3 page; and \$3.75 per 1/4 page (minimum) per issue, paid in advance. Ads will be placed throughout the newsletter as space permits.

Subscription to the Pick & Shovel is \$10.00 per year for mailed copy.

Membership dues for the Lincoln Gem & Mineral Club are as follows:

Adults (age 16 and over) - \$10 per year
 Juniors (age 12-16) - \$2 per year (with a responsible adult)
 Couples - \$20
 Family membership (with children under age 12 years) - \$22 per year

Applications for new membership must be approved by the Board of Directors after applicant attends at least one meeting of the Club. Dues will be payable to the Treasurer following Board approval, with an additional, one-time \$5 registration fee.

Mail Exchange Newsletters to:
 Lincoln Gem & Mineral Club,
 Inc.
 P.O. Box 5342
 Lincoln, NE 68505-0342
 Or e-mail newsletters to:

PICK & SHOVEL

LGMC web address courtesy of James Atkins.
<http://www.lincolngemmineralclub.org>

Your PICK & SHOVEL staff:

Publisher: Lincoln Gem & Mineral Club, Inc., P.O. Box 5342, Lincoln, Nebraska 68505-0342

Editor: Sharon Marburger, P.O. Box 64, Hickman, Nebraska 68372, E-mail: lgmcsecretary@yahoo.com

Circulation: Vera Lyman, 402-464-6089

News Reporters: All Members

The *PICK & SHOVEL* is the official publication of the Lincoln Gem & Mineral Club, Inc., Lincoln, Nebraska. Articles and items appearing within may be reproduced in other club bulletins, provided proper credit is given to the



The purpose of this corporation shall be to study, promote an interest in, and disseminate knowledge of lapidary and various Earth Sciences including but not necessarily limited to Geology, Paleontology and Mineralogy. It shall be a particular purpose of the corporation to provide education in these fields to its members and the general public, especially to youth and student groups.