



PICK & SHOVEL

Lincoln Gem & Mineral Club Lincoln, Nebraska
www.lincolngemmineralclub.org

General Meetings

All general meetings will be held at the Bethany Park Shelter at 7:00 PM on the third Thursday of the month. December and January are the only exceptions.

April 17, 2008
 May 15, 2008
 June 20 thru 22, 2008 Annual & Regional LGMC Show at Pershing Center Downtown Lincoln.
 June, July, and August No meetings
 September 18, 2008
 October 16, 2008
 November 20, 2008
 December 14, 2008 Christmas Party

Board Meetings

Gere and Walt Libraries - 7:00 PM Room 1

Gere Library April 30, 2008
 Gere Library June 4, 2008 (Board & Show)



Club Dues

Please pay your dues. After January 31, 2008 there is a \$5 late fee. Adults (age 16 and over) \$10 per year; Juniors (age 12 to 16) \$2 per year with a responsible adult.; Family membership (Couple, resident children under age 16) \$22 per year.

Visitors

The meeting was called to order at 7:19 p.m. by First Vice President Roger Pittard. In addition to the seventeen members present, we welcomed three guests - Ezekial Baldwin, Nina Paff, and Jauquin Buckwalden.

Attention

If your P&S has a red mark on your address label this means it is your last issue until your club dues are paid.

Program

This month's program will be on Rhodochrosite from the Sweet Home Mine in Colorado. The mine has long been recognized as the source of the world's finest Rhodochrosite crystals. It is situated near Mt. Bross, 4.5 miles west of Alma, Colorado. What would become the Sweet Home Mine was discovered in 1873, as a silver mining prospect. Beautiful red Rhodochrosite has become the sole reason why the name Sweet Home Mine is revered by mineral collectors all around the world.

<http://www.collectorsedge.com/sweethomemine.cfm>.

GENERAL MEETING MINUTES

March 20 , 2008, Bethany Park Shelter

The meeting was called to order at 7:14 p.m. by First Vice President Roger Pittard. Seventeen members were present. Three guests, Ezekial Baldwin, Nina Paff, and Jauquin Buckwalden were welcomed.

OLD BUSINESS:

The minutes of the February meeting were published in the Pick & Shovel. John Harrison moved to accept the minutes as printed, second by Mary Pittard. Motion carried.

The treasurer's report was read by Vera Lyman. Mary Pittard moved to accept the report as read, second by Charles Wooldridge. Motion carried.

We are still accepting specimens to donate to Lincoln Public Schools. Please bring your donations to Vera Lyman and she will deliver to LPS.

Jim Marburger is still looking for ideas for local / semi-local field trips. We would like to see that everyone has an opportunity to go on a field trip this year. Ed Dvorak mentioned hearing a rumor that fossils can be found in the bank of Salt Creek at the confluence of Dead Man's Run. Jim Marburger will check ownership of the land and obtain permission to access, if possible.

NEW BUSINESS:

Charles Wooldridge reported on his and Roger Pabian's trip to the MWF Show in Menasha, Wisconsin. One item of interest is that the IRS does not require the MWF to have a code of ethics to maintain its status, which also means the individual clubs also are not required. However, it is a good thing to have a code of ethics in place. A sad note of interest is that four more clubs folded in the past year.

Danny Cromer has agreed to lead the youth group (historically known as the Pebble Pups), with the assistance of another adult. We plan to rotate the second adult, using whoever is available to help Danny for any given project. Anyone can step in to help. Please coordinate with Danny if you would like to help. Anyone is welcome to assist on a regular basis, or however often is possible. Keep in mind that more than one person can help

with any project. Let's do what we can to build up our club's foundation.

The Pfizer/LPS Science Fair is slated for April 2 at Pershing.

Roger Pabian reported that the packets have been mailed out by MWF. Roger asks that everyone hand out discount dollars starting the first of June. Advertising is going along well.

Some discussion about the fluorescent display ensued. Roger Pittard expressed concerns about cooling the trailer and suggested building a step to give easier access into trailer.

A big thank you to Ed Ridge and Mary Pittard for bringing refreshments.

Charles Wooldridge moved to adjourn the meeting to refreshments and program, second by Al Stewart. Motion carried at 7:38 p.m.

The program was Explosive Underground Gold Mining, courtesy of the Gold Prospectors of America. Thanks to Jim Null for sharing.

Respectfully submitted,

Sharon Marburger

Scholarship Grants

Vera Lyman received information from Lincoln Public Schools regarding scholarship monies. They would like samples for the 5th grade classes; 1-2 inches in size, bagged in twelves. The specimen list will be published in the Pick & Shovel. Vera will confirm the numbers and volume needed.

1	Quartz	13	Obsidian
2	Feldspar	14	Pumice
3	Mica	15	Sandstone
4	Calcite	16	Shale
5	Halite	17	Limestone
6	Talc	18	Chalk
7	-----	19	Coal
8	Pyrite	20	Marble
9	Copper Sulfide	21	Slate
10	Sulpher	22	Quartzite
11	Granite	23	Petrified Wood
12	Basalt	24	Fossil Gastropods

LINCOLN GEM & MINERAL CLUB, INC. –
BOARD OF DIRECTORS
January 30, 2008

The meeting was called to order at 7:09 p.m. by Charles Wooldridge. Board members present were Vera Lyman, Sharon Marburger, Jim Marburger, John Harrison, Charles Wooldridge, Jim Atkins, and Al Stewart. Ed Ridge attended. President Terry Anderson arrived five minutes into the meeting and presided over the remainder of the meeting.

The minutes of the January Board meeting were distributed. John Harrison moved to accept the minutes as printed and distributed, second by Jim Atkins. Motion carried. The Treasurer's report for January was distributed. Jim Marburger moved to accept the report as printed and distributed, second by Al Stewart. Motion carried.

OLD BUSINESS: The annual January Swap brought out a good crowd of people. There were 13 vendors selling a variety of items. Charles Wooldridge made a set of nice signs to direct visitors to the show. The signs have been placed in storage to use in future years.

Jim Atkins reported that the web page will be updated shortly. He plans to link to this month's Pick & Shovel.

More specimens were brought in for Vera to deliver to LPS.

Roger Pabian plans to update the mineral and rock cases before the 2008 Show. Jim Marburger will deliver the cases to Roger.

For the protection of the Club and its members, Charles Wooldridge moved that the Board pass a resolution that two adult members in good standing be present for any junior activity; second by John Harrison. Motion carried.

NEW BUSINESS: Ken Doe, a long time member, passed away on January 21, 2008. A memorial was sent.

It was suggested that the Club purchase a bullhorn or public address system. Ed Ridge and Al Stewart both own devices they will bring to see which we prefer.

Until such time as the Club once again actively searches for a clubhouse, the Housing Committee is disbanded.

The Nebraska Academy of Sciences requested the Club consider increasing the amount of scholarships given. After some discussion, the Board agreed to change the scholarship amount to one \$300 scholarship rather than two \$100 scholarships.

Two applicants, David DeFruiiter and Roger Wolf, have paid their dues and attended the required meeting. Charles

Wooldridge moved to accept them as members; second by Al Stewart. Motion carried.

No further business was discussed. The meeting adjourned at 8:33 p.m. on a motion by Jim Marburger, second by John Harrison. Motion carried.

Respectfully submitted,

Sharon Marburger

Tri-Federation Rockhound Rendezvous - Reprise

By Richard Pankey, Inter – Regional Field Trips

The Northwest, Rocky Mountain and California Federations will host a Rockhound Rendezvous to Texas Springs, NV over Memorial Day Weekend, 2008 and all AFMS members are invited to attend. We had such a great time in 2003 we decided to do it again. The date is set – May 21 to 26, 2008. The place is picked – the Texas Springs area for spectacular pink agate limb casts, as well as, other agate and petrified wood. Arrangements are being made; details are being finalized and the flier will be issued next month. Watch for the fliers and information in the AFMS Newsletter and on the web site, as well as, the host federation's Newsletters and web sites.

Late spring is a beautiful time of year to be in northern Nevada's high desert. The days are warm and the evenings are cool. Great weather for rockhounding and for our rendezvous. We will collect at 4 to 6 different sites: pink limb casts, small limb casts and bogwood, snakeskin agate, jasp/agate limb casts, geodes, and more. Our Rendezvous will include daily collecting trips, potluck dinners, daily Happy Hours, evening campfires, map exchange and tailgate displays. This area has been popular with rockhounds for many years, and prized material can still be found for those who are willing to dig for it. And many were successful! In 2003 we had over 200 rockhounds from 14 western states representing 55 clubs of the three federations.

Come join us for a great Tri-Federation Rendezvous of collecting, fun and fellowship. Mark your calendar, schedule your vacation, and plan to join us next May 21st to 26th.

Rocky Mountain Federation News November-2007



The Wonderful World of Agates celebrates the world's most beautiful and varied gemstone. This international event will be held July 10-13, 2008, at the University of Wisconsin – Fox Valley in Menasha, Wisconsin. Sponsored by the Weis Earth Science Museum, Wisconsin's official mineralogical museum, the four-day celebration will feature entertaining and educational presentations, displays of some of the finest agate specimens in the world, special activities for families, a silent agate auction, and an international array of dealers selling agate, jasper, petrified wood, and thunder egg specimens, agate fossils and geodes, and agate-related jewelry and art. An area will be reserved for agate books and signings by authors, with some new titles expected to be unveiled at the time of the show. Stanford University historian and agate expert, Dr. Robert Proctor, will present a keynote address on Saturday, July 12, following the banquet.

Registration to the event is \$75 per person, which includes all programs, the silent auction and an early-bird visit to vendors. The banquet is an additional \$18.00. All registrants may attend Dr. Proctor's keynote address, whether or not they attend the banquet.

Due to space restrictions, attendance at the day-long educational seminar and the banquet will be limited, so participants are encouraged to register early.

The displays and vendors will be open to the general public on Friday-Sunday for a nominal fee.

The organizers of "The Wonderful World of Agates" envision an event that will bring together agate aficionados and amateurs alike, to celebrate and explore the beauty, science, history and mystique of these remarkable gemstones.

The Wonderful World of Agates is the brainchild of Weis Museum Educator Gary Richards, who recognized that Wisconsin, Minnesota and Upper Michigan seem to have an inordinate number of internationally-recognized "agateers." For example, Roger Clark from Appleton, Wisconsin, is the author of Fairburn Agate, Gem of South Dakota; Eugene Mueller, owner of The Gem Shop in Cedar-

burg, Wisconsin, mines agates and jasper at his claims in Mexico and Oregon, and Bob Barron, a scientist at Michigan Technological University's Seaman Mineralogical Museum, extracts agate specimens from bedrock 40 feet beneath the waters of icy Lake Superior.

Please check this website regularly for updates on events, speakers, activities, accommodations, travel information and links to other resources.

<http://www.uwfox.uwc.edu/wesm/agate/>

Thursday, July 10, 2008 Registrants Only

9:00 AM-5:00 PM

Speaker programs

5:00 PM-7:00 PM

Early-bird viewing of displays and sales of dealer offerings

7:00 PM-10:00 PM

Reception at Weis Earth Science Museum

Friday, July 11, 2008 Open to Public

10:00 AM

Ribbon-cutting ceremony with dignitaries

TBA

Speakers programs

10:00 AM-7:00 PM

Dealer and display areas open

Saturday, July 12, 2008 Open to Public

10:00 AM-5:00 PM

Dealer and display areas open

6:00 PM

Banquet (Keynote Speaker & Silent Auction following)
(separate fee for banquet,

Sunday, July 13, 2008 Open to Public

11:00 AM-4:00 PM

Dealer and display areas open

Diamond – Fact and Legend

Diamond is the modern and traditional birthstone for April

by Sharon Marburger

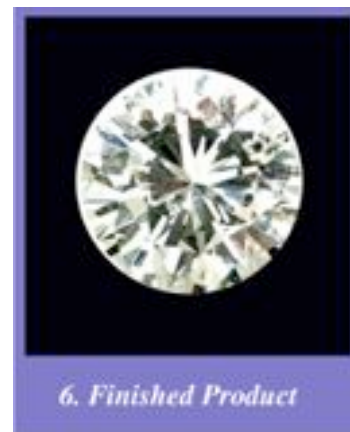
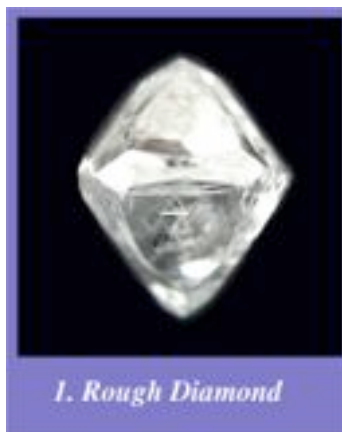
Diamond is a mineral, a natural crystalline substance, the transparent form of pure carbon. Diamond is something superb, the peerless "king of gems" that glitters, dazzles, and symbolizes purity and strength. Diamond is indomitable, the hardest surface known. They form deep within the earth where pressure is 65,000 times that of the earth's surface and temperatures exceed 2,700 degrees Fahrenheit. They have been found inside meteorites and near meteorite craters on the earth's surface. A diamond is likely the oldest thing you will ever own, probably 3 billion years in age, fully two thirds the age of the Earth.

Ancient Hindus believed lightning bolts created diamonds. The Greeks had several theories about the origin of these gemstones. They believed they were tears of the gods, splinters of stars, or crystallized lightning.

During the middle ages, diamonds were thought to heal illness, especially problems relating to brain disease and the pituitary gland. The best way to cure disease was to take the crystal into bed with you to warm it up first. This way, it could draw out toxins.

Diamonds have also been reputed to enhance a person's level of clarity, balance, and abundance. They also are alleged to amplify a person's energy, whether positive or negative, as well as the healing properties of other crystals. For example, if worn with amethyst, diamonds will increase that crystal's soothing and calming properties.

Excerpts taken from www.amnh.org and www.associatedcontent.com.



Pictures courtesy of diamondcuttersintl.com.



PEBBLE PUPS

By Mrs. Marburger

Hello Juniors! It is my desire to dedicate a page to you in the Pick & Shovel. If there is something you'd like to see on this page, please let me know. This month I'm sending you on a hunt for members of the Quartz family.

Unscramble these members of the Quartz family. Answers on page 11.

areo zuqart

stthymea

kyoms uqtzar

neticri

doncelachy

rychpossera

greit yee

encarlain

dyxrnsoa

rapsje

liftn

tnruevneia

trech

yxon

atega



Thunder Eggs

Thunder eggs do not thunder, nor do they hatch. They are not even eggs.

One story claims they are called thunder eggs because they were once thought to be the petrified eggs of the terrible thunder lizard, Turamosaurus Rex. According to ancient Native American legend, when the Thunder Spirits living in the highest recesses of snowcapped Mount Hood and Mount Jefferson became angry with one another, amid violent thunder and lightning storms they would hurl masses of these spherical rocks at each other. The hostile gods obtained these weapons by stealing eggs from the Thunderbirds' nests, thus the source of the name "Thunder eggs."



Thunder eggs are actually baseball shaped concretions dug from the soil of old lava pockets that have been filled with opal, agate, or chalcedony. Some scientists insist that the characteristic and unique internal pattern of typical Thunder eggs is due to expansion and rupture of rock by gases. Others claim the pattern is due to desiccation (drying) of a colloid or gel. However they are formed, when cut in half and polished, they reveal beautiful patterns and color. They are found in volcanic ash beds of Oregon and Idaho.

Some of the preceding information taken from www.naturenw.org.

The Green River Formation

By Tom Caggiano

Historical Background

In 1856 Dr. John Evans collected the first fossil fish known to science from the Green River Formation. The *Knightsia eocaena* was described by Dr. Joseph Leidy in Philadelphia. Although fossils had been reported from the area, this was the first described. And so begins the story of one of the greatest fossil sites known to science.

Soon after, geologists, railroad workers, and others started reporting fossil sites in surrounding areas. Most of the fish collected were sent to Edward Drinker Cope, who did the majority of the work on the fish fauna of what became known as the Green River Formation. Cope travelled west and did some collecting of his own, and in 1871, published a major work on the fishes.

The Green River Formation outcrops in the states of Wyoming, Utah and Colorado and showcases the remains of a large lake system. Scientists have determined that the system was made up of three lakes that varied in size and depth through time. The system existed for just over twenty million years, forming about sixty million years ago and disappearing around the end of the Eocene. The formation preserves the remains of a subtropical environment. The extremely fine-grained sediments produced beautiful fossils that grace the collections of museums around the world. They also grace the collections of many amateurs, the fish being for sale in almost every rock shop in the country, many museum shops and every souvenir shop in the Midwest. The formation has produced over a million specimens with over one half million in the last thirty years alone.



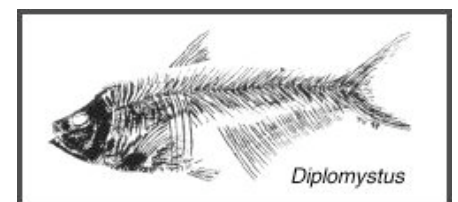
Map showing approximate location of major outcrops of the Green River Formation.

The Lakes

Fossil Lake was the deepest of the three lakes in the system. It had a small surface area and was short-lived. Fossil Lake produces the largest share of fish specimens of the three lakes. Lake Gosiute produced a smaller variety of fossil fishes and a different state of preservation as well. It outcrops near the Fontenelle Reservoir and near the Farson Dam. The shales and fossils are not the typical Green River specimens most of us are familiar with. Lake Uinta was the largest in surface area but was the shallowest. In existence for 17 million years, it was the longest-lived of the three lakes. Its sediments form one of the thickest lacustrine sediments known, almost 7000 feet in some places.

Field Work

The fish are collected from two different units. One, called the "split fish layer," is so called because the layers split, exposing the fossils. This sometimes reduces the quality, as part of the fossil ends up on each side of the matrix. The other unit is called the "eighteen inch layer." It produces the finest specimens because it splits above the specimens, leaving them under a thin layer of rock. Careful preparation exposes a complete fossil. Eighteen-inch-layer specimens are collected by removing the caprock, then cleaning off the fossil-bearing layers. Once clean, one looks for the outline of a vertebral column covered in matrix. A saw is used to cut a square around the fossil to a depth suitable to reach below the bottom of the specimen.



The Green River Formation

By Tom Caggiano (Continued)

The surrounding rock is then removed, leaving the fossil sticking up off the strata. A blade is then used to pry up the fossil and its surrounding matrix.

Split-fish fossils are collected by selecting a block of suitable size and splitting off thin layers using thin blades. Blades are driven into the block at various points around the block until the layer breaks free. One then carefully examines both sides of the rock for fossils including those that may still be covered with a thin layer of matrix, in which case the line of vertebrae show as a linear bump on the rock surface. A rock saw is used to square up the collected pieces at which time they can be packed for shipping.

Preparation

Preparation



Knightia eocaena are sometimes found in mass death layers.

Since specimens can end up on very thin fragile slabs of rock, it is sometimes wise to mount the entire piece onto a plywood board cut to match the shape of the specimen before beginning preparation work. Epoxy works well as an adhesive. The method of preparation varies, depending on whether you are working with a split-fish-layer or eighteen-inch specimen. The split-fish specimens generally require little or no work. One might use an optical magnifier and clean off any stray pieces of matrix still covering parts of the fish. Remove dust with a mild burst of air and finish with a light coat of a clear acrylic spray.

Eighteen-inch specimens require much more work. While the matrix is very soft and easy to remove, the fossils tend to be extremely fragile. The bones tend to be fairly stable but the scales are very delicate. The utmost care must be taken in order to produce a museum-quality specimen.

The thin layer of rock that covers the fossil can be thinned down using one of several methods. An aircscribe, mini sandblaster or simply bulk gouging with a large needle all work equally well. One must be careful to leave a thin layer of matrix.

The next step should be done under strong magnification. The "scratch and blow"

method has proven to be the best way to produce a fine specimen -- a light scratch at the matrix using a fine steel needle and then a burst of air to remove the dust. Patience is the name of the game, as prying up sections of matrix will cause the fish to "split," resulting in a poor outcome. Care must be taken not to put much pressure on the fossil itself, as this will cause pieces of it to flake off. Eventually, the complete fossil will be uncovered and should then be sprayed with a protective acrylic spray. The spray is important, as prolonged exposure to humidity can have an adverse effect on the quality of the fossil.

The Fish

While the formation preserves over twenty species of fish, five constitute over 98% of collected specimens. We will confine our discussion to common types.

The Green River Formation

By Tom Caggiano (Continued)

Knightsia

This is probably one of the most common fossils in the world. [Editor's note: I read recently that it is indeed the most common vertebrate fossil thus known.] The sheer numbers boggle the imagination. In 1978 alone, over 20,000 were collected. You can find them for sale at any place that offers natural history items.

Two species are known with *K. eocaena* being the most common. A member of the herring family, they average five inches in length with a maximum size of ten inches. They have a deeply forked tail and a single dorsal fin in front of the mid-body line. *Knightsia* fed on algae, ostracods and insects and they were the major food source for many of the larger fish from the lakes. They were schooling fish and are frequently found in mass mortality or "death" layers. Fossils have been found packed as densely as several hundred fish per square meter of slab rock.

Mioplosus

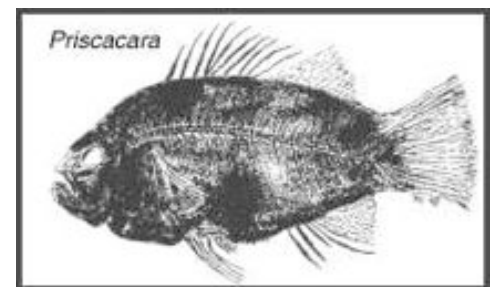
Cope described two species of this perch-like fish, however, present-day researchers doubt the existence of *M. sauvagenus*. With the only specimen found having been lost, no further study is possible. *M. labracoides* is a fairly common predator easily distinguished by the two dorsal fins, large fan-shaped tail and an anal fin equal and opposite its second dorsal fin. A voracious predator, *Mioplosus* is the fish most commonly found eating other fish, something for which the Green River fish fossils are famous.

Diplomystus

The upturned mouth of this herring type fish indicates that it was probably a surface feeder. They have a wide anal fin, single dorsal fin, and a deeply forked tail. The maximum size is listed at twenty-six inches, but they are more commonly three to six inches. *D. dentatus* is also known from the Cretaceous of South America. When Cope originally erected the genus, he listed four species, however, more recent research has pared it down to *D. dentatus* only. Another *Knightsia* predator, "Diplos" have been found containing fossils of their last meals.

Priscacara

Priscacara has grinding-type teeth, indicating that it probably fed on snails and crustaceans. It is easily identified by its stout dorsal and anal fin spines, which, in my opinion, make it the most attractive of the Green River fossils. Two species, *P. serrata* and *P. liops*, are the most common. Several others are under review by current researchers. *Priscacara* are known only from the Eocene. They have a large oval body and range in size from one inch to fifteen inches with four to six most common. They were schooling fishes and are more commonly found in the eighteen-inch layer.



Phareodus

The largest of the common fishes is *Phareodus*. Two species, *P. encaustus* and *P. testis*, are known. They average fifteen inches, with a maximum of thirty inches. With the dorsal and anal fins located at the very back of the body, these fish cannot be confused with any other Green River species. They have large very sharp teeth and have been found with the remains of *Mioplosus* and *Priscacara* inside.

The Green River Formation

By Tom Caggiano (Continued)

Collecting Opportunities

Fortunately, gaining access to collecting sites in the Green River Formation is easy. One has a choice of several quarries open to fee collecting. I've collected in three. Years back I spent a few hours at Warfield's Quarry and I collected at Ulrich's about three years ago. Most recently I collected at Antares Fish Quarry. All three are commercial quarries that allow individuals to collect for a fee. These quarries are usually leased from local landowners or governments for fossil collecting rights. Overburden is bulldozed off and you are given an area to work. Ulrich's provides more assistance but charges a higher fee. You drive your own vehicle into Antares and Warfield, while Ulrich drives you to the site in their four-wheel drives. There are others in the Kemmerer, Wyoming area; I suggest you check them all out and pick the one that best suits your situation.

The Green River formation is a world-class site that offers amateur collectors the opportunity to collect museum-quality specimens with limited expertise, expense, and effort.

Reference:

Grande, Lance, 1984. Paleontology of the Green River Formation, with a Review of the Fish Fauna. Geological Survey of Wyoming, Bulletin 63.

<http://www.fossilnews.com/2000/grnrv/grnr.html>



Knightsia are so common that they are used for decorations, such as the lid of this oak box.

2008-Pfizer-LPS Science Fair

Eddie Ridge, Al Stewart, Susy McMahan and Roger Pabian staffed the Lincoln Gem and Mineral Club's booth at the Pfizer_LPS (Lincoln Public Schools) Science Fair.

Eddie provided a large display of minerals, agates, and fossils, as well as having a trim saw on hand to show what we use to slice rocks apart.

Al furnished an All-in-One cabochon unit and finished several cabochons to the pleasure and the enlightenment of fair visitors, participants, teachers, and parents.

Susy also finished several cabochons with the All-in-One unit she brought along.

Roger brought along a hands-on exhibit of invertebrate and plant fossils, and the shark tooth from the ancestor to the Great White Shark proved to be especially popular with the younger set. Roger explained that this one was so big that it likely could have swallowed any of the kids whole, and that proved very impressive to them.

We also passed out show flyers and discount dollars for the June show, and had a great time visiting with all of the science fair participants and visitors.

Submitted by Roger K. Pabian

President's Message

by Terry Anderson

2008 Elected Officers

President	Terry Anderson	402-826-0480	cajunbrat@neb.rr.com
1st Vice President	Roger Pittard	402-759-4623	rogerp@dtmspeed.net
2nd Vice president	Charles Wooldridge	402-325-8849	charles.wooldridge@bhss.ne.gov
Treasurer	Vera Lyman	402-464-6089	
Secretary	Sharon Marburger	402-792-2348	mamamar@windstream.net
Board Member	James Atkins	402-483-1610	jna@inetnebr.com
Board Member	John Harrison	402-792-2337	jh21923@alltel.net
Board Member	James Marburger	402-792-2348	jm24122@windstream.net
Board Member	Al Stewart	402-483-1044	mmstewart@inebraska.com



Terry Anderson

Nominating Committee Long Range Planning & By-Laws Committee

3 Years	Vera Lyman	3 Years	Charles Wooldridge
	Edward Ridge		Phyllis Parks
2 Years	John Harrison	2 Years	Susan Taylor
	Aulden Stewart		Edward Ridge
1 Year	Mary Pittard	1 Year	Vera Lyman
	Phyllis Parks		Roger Pabian

Sorry Terry was busy and did not provide the P&S with a President's Message this month.

(Answers to puzzles on Page 6)

STANDING COMMITTEES

Education/Librarian	Roger Pabian
Field Trips	James Marburger
Historian	Sharon Marburger
Membership Record	Edward Ridge
Programs	Charles Wooldridge
Property	James Marburger
Refreshments/Door Prizes	Andrea Anderson
Youth Activities	Kay Jurgens, Vera Lyman , Judy Reilly
Auditing Committee	John Harrison, Roger Pabian, James Marburger
Geology Day Coordinator	Roger Pittard
MWF Liaison	Vera Lyman
Scholarship	Vera Lyman
Christmas Party	Edward Ridge
2008 Show	Roger Pabian
2008 Swap	Charles Wooldrige

agate
onyx
chert
aventurine
flint
jasper
sardonyx
carnelian
tiger eye
chrysoprase
chalcedony
citrine
smoky quartz
amethyst
rose quartz

Lincoln Gem and Mineral Club

Proudly Presents its 50th Annual
Gem and Mineral



SHOW

“Our Golden Anniversary”

June 20-22, 2008



In conjunction with the Annual Conventions of the
**Midwest Federation of Mineralogical Societies and the
Nebraska Association of Earth Science Clubs**
Pershing Center

(lower level)

**226 Centennial Mall South
Lincoln Nebraska**

**Three Great Days of
Education and Entertainment**

Featuring Dealers, Gemstones, Minerals, Agates, Fossils, Jasper, Petrified Wood, Jewelry,
Gem and Jewelry Making Equipment and Supplies, Demonstrations, Educational Pro-
grams, Rough and Uncut Gems, Children's Activities, and much more.

*******Discount Coupon*******

Fun for the whole family

Hours: Friday, June 20, 9-7; Saturday, June 21, 9-7; Sunday, June 22, 10-5

Admission: Adults, \$5.00; children under 12, free with adult;

3 day pass, \$12.00

Bring this coupon for \$1.00 off. Good for all adults in party.

THE ROCK TUMBLER

A DIVISION OF WOLF ENTERPRISES

Your Factory Authorized Full Line Lortone Dealer

Savings - Service - Selection



www.therocktumbler.com

Roger Wolf, Owner

1011 N. 79th Street, Lincoln. NE 68505, (402) 489-1105

roger@therocktumbler.com

J.J. & L. Rocks and Minerals

COME SEE US FOR YOUR ROUGH NEEDS

GEMS - CABS - SLABS - MOUNTINGS

STERLING SILVER - GOLD FILLED - 14K GOLD

SILVER SUPPLIES - TOOLS - MACHINERY - NEW AND USED

CUSTOM SERVICES FOR SLABS, FLAT LAPPING, AND CABOCHONS

STARTING OUR 33RD YEAR

330 LOCUST HICKMAN, NE 68372-0068 PHONE 402-792-2337

"PROVIDING SUPPLIES FOR THE NOVICE TO THE DISCRIMINATING ROCKHOUND"

PLEASE CALL FOR APPOINTMENT

Advertising by rock-hobby business or interest is permitted with the approval of the Board. The rate is set at \$15.00 per full page; \$7.50 per 1/2 Page; \$5.00 per 1/3 page and \$3.75 per 1/4 page (min) per issue, paid in advance. These ads will be placed through out the bulletin a space permits.

Subscription to the Pick & shovel is \$10.00 per year mailed.

Dues to Lincoln Gem & Mineral Club are as follows:

Adults (age 16 and over) \$10 per year; Juniors (age 12 to 16) \$2 per year; Family membership (Couple, resident children under age 16) \$22 per year. New memberships must be approved by the Board, after applicant attends at least one meeting of the Club and pays the above dues plus a \$5 registration fee.

Meetings: Third thursday, September through May except December & January. Those dates will be announced. The meetings are held at Bethany Park Indoor Shelter, at Cotner and Vine Street.

Mail Exchange Newsletters to:
 Lincoln Gem & Mineral Club
 P.O. box 5342
 Lincoln, Nebraska 68505-0342
 or E-Mail Newsletters to:
jna@inetnebr.com

L.G.M.C. Web address-Courtesy of Jim Atkins
<http://incolor.inetnebr.com/jna/gemclub/lgmc.htm>

Your *Pick & Shovel* staff:

Publisher: Lincoln Gem & Mineral Club, Inc. P.O. box 5342,
 Lincoln, Nebraska 68505-0342

Editor: Jim Atkins 3028 So. 35th Street, Lincoln Nebraska 68506
 E-mail: jna@inetnebr.com

Circulation: Phyllis N. Parks 402-476-6798

Business Reporter: Vera Lyman 402-464-6089

News Reporters: All Members

The *PICK & SHOVEL* is the official publication of the Lincoln Gem & Mineral Club, Lincoln, Nebraska. Articles and items appearing within may be reproduced in other club bulletins, provided proper credit is given to the *PICK & SHOVEL* and the author and that a reprint of the bulletin is sent to the editor of the *PICK & SHOVEL*.



The purpose of this corporation shall be to study, promote an interest in, and disseminate knowledge of lapidary and various Earth Sciences including by not necessarily limited to Geology, Paleontology and Mineralogy. It shall be a particular purpose of the corporation to provide education in these fields to its members and the general public, especially to youth and student groups.