



PICK & SHOVEL

Lincoln Gem & Mineral Club Lincoln, Nebraska
www.lincolngemmineralclub.org

General Meetings

All general meetings will be held at the Bethany Park Shelter at 7:00 PM on the third Thursday of the month. December and January are the only exceptions.

March 20, 2008
 April 17, 2008
 May 15, 2008
 June 20 thru 22, 2008 Annual & Regional LGMC Show at Pershing Center Downtown Lincoln.
 June, July, and August No meetings
 September 18, 2008
 October 16, 2008
 November 20, 2008
 December 14, 2008 Christmas Party

Board Meetings

Gere and Walt Libraries - 7:00 PM Room 1

April 2 Walt Library and Gere Library April 30, 2008



Club Dues

Please pay your dues. After January 31, 2008 there is a \$5 late fee. Adults (age 16 and over) \$10 per year; Juniors (age 12 to 16) \$2 per year with a responsible adult.; Family membership (Couple, resident children under age 16) \$22 per year.

Visitors

The meeting was called to order at 7:19 p.m. by Second Vice President Charles Wooldridge. In addition to the thirteen members present, we welcomed three guests - Julie Brinkman, Molly Liesveld, and Cynthia Casselman.

Attention

If your P&S has a red mark on your address label this means it is your last issue until your club dues are paid.

Program

Gold Prospectors of America present:
 Explosive Underground Gold Mining

Tom and Cindy go historical underground mining with the crew of miners from the 16 to ONE Gold Mine in the California Mother Lode. Feel the screen shake as they detonate boxes of explosives. Tom shows you some of the world class specimens of gold, and statues of eagles and bears made from beautiful gold and quartz. This mine is where most of the jewelry quality gold in quartz comes from. You will get an incredible close up look of underground mining life. Also tour the historic California State Park of the Empire Mine. It was one of the largest underground gold mines in the world. This show is educational and entertaining with a few surprises thrown in.

GENERAL MEETING MINUTES

February 21 , 2008, Bethany Park Shelter

The meeting was called to order at 7:19 p.m. by Second Vice President Charles Wooldridge. In addition to the thirteen members present, we welcomed three guests – Julie Brinkman, Molly Liesveld, and Cynthia Casselman.

OLD BUSINESS:

The minutes of the January meeting were published in the Pick & Shovel. Jim Atkins moved to accept the minutes as printed, second by Richard Peterson. Motion carried.

The treasurer's report was read by Vera Lyman. Phyllis Parks moved to accept the report as read, second by Jim Atkins. Motion carried.

We are still accepting specimens to donate to Lincoln Public Schools. Jim Atkins will again publish the specimen list in the next Pick & Shovel. Please bring your donations to Vera Lyman and she will deliver to LPS.

Assistant Show Chairman Charles Wooldridge provided the show report in Roger Pabian's absence. All 14 dealers have been contracted. There will be some changes in the selling and nonselling demonstrators due to the change of show date. We will have several nice featured displays and special programs. Roger asks that all club members be planning their displays. If you have your own display case(s), please plan to use them. We will probably need to borrow cases from the Omaha club. All in all, it sounds like we are going to have great show.

Vera Lyman reported that the January 2008 Swap was one of the best swaps the club has seen. The room was packed with buyers and visitors nearly the entire afternoon. The silent auction also generated a nice amount.

Geology day was quite successful this year. Over 100 people came through the doors. Club members who attended said it was a lot of fun. Everyone is encouraged to participate next year.

Jim Atkins is currently taking a special class to learn how to build the best website possible for our needs. He will update us as necessary.

Jim Marburger is still looking for ideas for local / semi-local field trips. We would like to see that everyone has an opportunity to go on a field trip this year.

NEW BUSINESS:

The Board has disbanded the housing committee due to inactivity. The committee will be reinstated when necessary.

Upon a request by the National Academy of Sciences, LGMC's two \$100 scholarships have been consolidated and added to, creating one \$300 scholarship per year.

As there was no further new business, Phyllis Parks moved to adjourn the meeting to refreshments and program, second by Al Stewart. Motion carried at 7:38 p.m.

The program presented was courtesy of The Travel Channel, and consisted of two episodes of the show Cash and Treasures – one on Lake Superior Agates and the other on Oregon Petrified Wood.

Respectfully submitted,

Sharon Marburger

LINCOLN GEM & MINERAL CLUB, INC. – BOARD OF DIRECTORS

March 5, 2008

No board meeting due to not enough members present to conduct business.

Respectfully submitted,

Sharon Marburger



MAMMOTH FAMILY TREE

<http://www.exn.ca/Mammoth/FamilyTree.cfm>

If all the different animals that are even remotely related to the mammoths were to have a family reunion, the turnout would be pretty dismal.

Most of them are dead. And dead for thousands, even millions of years. So any attempt to reconstruct the family tree involves a lot of guesswork on the part of a lot of experts.

84 kg (185 pounds) and were as long as 3 to 4.8 metres (10 to 15 feet).

They lived in matriarchal family groups. Females gave birth to a single calf after carrying it for about 22 months. The gestation period was so long, that mammoths probably only gave birth every 3 or 4 years. Mammoths lived to about 60 years.

Proboscideans

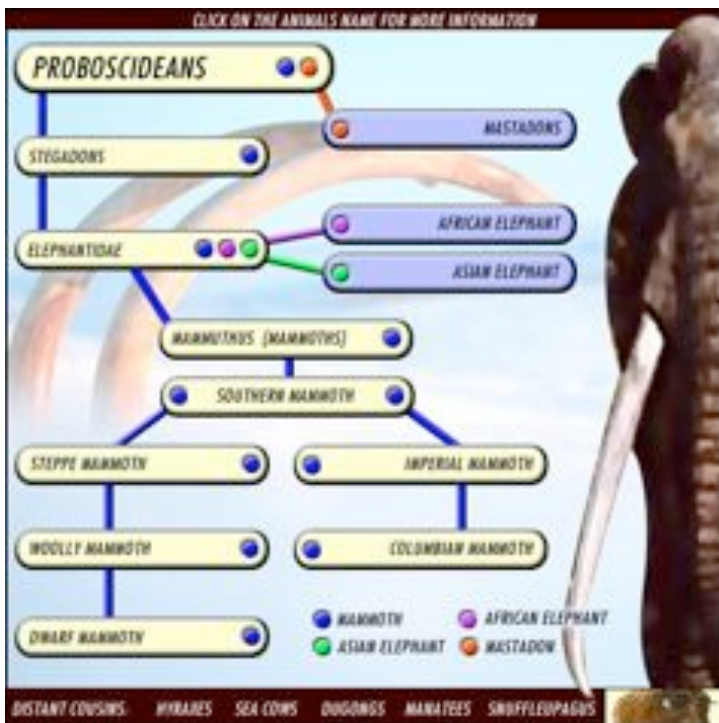
Proboscideans are the ancient ancestors to several groups of animals that are characterized by their long elephant-like trunks. While the word "proboscis," in fact, means nose, the trunk is actually the upper lip and nose melded together. The earliest fossil evidence dates these creatures back to the Eocene period - between about 56 million and 35 million years ago - and places them just about where the Mediterranean Sea exists today. Unlike the elephants that now roam the Earth, early proboscideans were only about as big as a pig or a cow, and they had no tusks.

Stegadons

Stegadons were one of the first known proboscideans. They lived during the Miocene period, which was between 23 million and five million years ago. These animals, for which little is known of their actual appearance, lived in Southeast Asia and Africa. Experts believe that stegadons gave rise to the elephant family.

Mastodons

Mastodons (mammut) looked a lot like mammoths. However, they reached a height of 2.4 - 3 metres (8-10 feet), which is about one metre shorter than mammoths. Their tusks were also about one metre shorter than the average mammoth's. Unlike mammoths who grazed on grasses and herbs, mastodons - called browsers - had specially adapted teeth for eating twigs, branches and other wood-like vegetation. They weighed in between 4 and 5 tonnes, again somewhat lighter than (Continued page 4)



Thanks to their closest living relatives, the Asian elephant, and an abundance of unearthed fossils, a fair bit is known about mammoths.

They were vegetarians, grazing mostly on grasses, herbs, shrubs and small trees.

They spent between 14 and 20 hours of their day eating and searching for more to eat. By day's end they would have consumed up to 200 kg (440 pounds) of food and 180 litres of water. They weighed between 4 and 10 tons depending on the specific species - their tusks alone weighed about

MAMMOTH FAMILY TREE

<http://www.exn.ca/Mammoth/FamilyTree.cfm>

(Continued from page 3) mammoths. Fossil records indicate the mastodon originated in present-day Egypt - although like the mammoth, it travelled the world. Fossils also reveal that the earliest mastodons appeared between 20 million and 30 million years ago, significantly predating the mammoths who didn't show up until about 4 million years ago.

African elephant

Unlike many in the mammoth family tree, the African elephant (*Loxodonta africana*) is still around. Like its name suggests, it keeps within the boundaries of Africa and is well adapted to the savannas and warm grasslands of the continent. It stands about 3 - 3.5 metres (10 - 11 feet) tall, and weighs about 4 - 6 tonnes. It began to evolve separately from the Asian elephant about 2 million years ago. One good way to tell the African and the Asian elephants apart is to look at their ears: their shape roughly corresponds to the shape of their respective continents.

Asian Elephant

About 2 million years ago the Asian (*Elephas maximus*) and African elephant started to evolve distinctly. It was after that divergence that mammoths evolved distinctly from the Asian elephant. So, mammoths are more closely related to this elephant species. Asian elephants are found in the continent for which they are named and are well-adapted to woodland conditions. They stand between 2.4 and 3 metres (8 - 10 feet) tall and weigh 3 - 5 tonnes. Like the African elephant, whose ears resemble the shape of Africa, the Asian elephant's ears roughly mimic the shape of Asia.

Southern Mammoth

The Southern mammoth (*Mammuthus meridionalis*) is the earliest-known mammoth species. Not much is known about their distinguishing features, it isn't even known whether they were hairy - no pelts have ever been found, though. Experts believe they were probably adapted to warm, lush areas. The Southern mammoth first came on

the scene about 2.5 - 3 million years ago, originating in Africa.

Steppe mammoth

The Steppe mammoth (*Mammuthus trogontherii*) is the most complicated of all mammoths. Experts agree that it evolved from the Southern mammoth, and spread throughout Eurasia. But there is a debate over whether the Steppe mammoth spread throughout North America, too. Some say that in North America there are two distinct species, the Columbian and Imperial mammoth. But there are those who believe that the Columbian and Imperial mammoth are the same animal - the North American Steppe mammoth.

Columbian mammoth

The Columbian mammoth (*Mammuthus columbi*) lived in North America inhabiting the southern regions, throughout America, Mexico and all the way down to Honduras. Unlike the Woolly mammoth that wore a shaggy coat of fur that kept him warm in the cold northern regions, the Columbian mammoth was well-adapted to its warmer surroundings, and was, in contrast, hairless. It stood 3.7 - 4.3 metres (12 - 14 feet) at the shoulder and weighed as much as 44,000kg (10 tons).

Imperial mammoth

The Imperial mammoth (*Mammuthus imperator*) was the largest of all mammoths. It stood at least 4 metres (14 feet) at the shoulder, weighing over 10 tonnes. It inhabited the northern regions of North America. Some experts don't actually believe the Imperial mammoth existed. Click on Steppe mammoth to find out why.

Woolly mammoth

The Woolly mammoth (*Mammuthus primigenus*) arose in Siberia, but ended up settling into a vast northern range that extended from Ireland all the (Continued on page 5)

MAMMOTH FAMILY TREE

<http://www.exn.ca/Mammoth/FamilyTree.cfm>

(Continued from page 4) way east to the northern regions of North America. It is the best-known of all mammoths, no doubt due to one of its distinctive features: a shaggy coat of yellowish-brown curly fur. Some of the hairs in its coat would have grown to a length of 50 centimetres. The coat was one of the main reasons it adapted so well to the extreme cold. It also had smaller ears and a smaller trunk than other mammoths, which reduced its surface area, most likely to help it prevent heat loss. It also had a thick layer of skin that covered an 8-centimetre layer of insulating fat.

Wrangel Island Dwarfs

Think of mammoths and the word big comes to mind. But not all mammoths were, well, mammoth-sized. Consider the species of mammoths that evolved off the northeastern Siberian coast. Marooned on a piece of land - now called Wrangel Island - that had broken away from the continent, these Dwarf mammoths (*Mammuthus exilis*) stood a mere 6 feet tall at the shoulder.

Channel Island Dwarfs

Like the Wrangel Island Dwarf mammoths, calling the Channel Island mammoths 'mammoth' is something of an oxymoron. These animals, much like those found on Wrangel Island, stood only 6 feet tall. They came to the islands 30,000 years ago as Columbian mammoths with a penchant for swimming, and over time, shrunk into a whole new species.

Distant Cousins

Not much is known about how these very distant cousins were related to the mammoths. But many experts believe that somehow, somewhere, way back when, mammoths and these animals below sprung from a common ancestor.

Hyraxes

Small, furry herbivores native to tropical Africa.

Steller's sea cows

Eight-metre-long, 6-tonne relative of the manatee that was killed off by humans in the 18th century

Dugongs

Closely related to the manatee, with a body like a dolphin - but less sleek - and a head much like that of a pig.

Manatees

Three manatee species live today: the Amazonian, West Indian and African manatee.

Snuffleupagus

Large, furry mammoth-like creature with extra-large eyelashes who some say doesn't exist.





PEBBLE PUPS

By Mrs. Marburger

Hello Juniors! It is my desire to dedicate a page to you in the Pick & Shovel. If there is something you'd like to see on this page, please let me know. This month I'm sending you on a hunt for agates. See how many you can find in the puzzle below. Happy hunting!!

S D E N D R I T I C M N O T R N
 T X L R O I R E P U S E K A L A
 A E R M S D A E H Y R D O L S O
 B A E L A L L E T I R R U T I L
 R N A P L U M E F A I R B U R N
 A A S T E N O N N T R O S E I Q
 Z T I X Z E C A L Y Z A R C B U
 I N O I T A C I F I T R O F O R
 L O G U N I A A L Y X E O A T B
 I M O S X T I X N E A P U N S B
 A T R E P R L K H Y D G O U W D
 N U M A B A N D E D O M U G A C
 O K X U N I K S E K A N S A N I
 E L R S W E E T W A T E R L A N
 I N D R O M O S S R P Q Z D T T

- FORTIFICATION
- IRIS TEEPEE
- CANYON
- TURRITELLA
- SWEETWATER
- BOTSWANA
- BRAZILIAN
- CRAZYLACE
- DENDRITIC
- DRYHEAD
- FAIRBURN
- FIRE
- MONTANA
- MOSS
- PLUME
- SNAKESKIN
- BANDED LAGUNA
- LAKE SUPERIOR
- MEXICAN

Previously published in the March 1979
 Pick & Shovel, courtesy of the Glacial
 Drifter

(Answers on Page 9)

Unscramble the birthstones, then fit them in the puzzle to the right. Answer are on page 9.

- TRAGEN
- SYTTMEAH
- OODLEBONTS
- ODDMAIN
- LAMDEER
- NOTOMNOSE
- DIRTPOE
- HASPI REP
- LEMONUIRAT
- POTZA
- QUIRTOSUE

	B	—	—	—	—	—	—	—	—
	I	—	—	—	—	—	—	—	—
	R	—	—	—	—	—	—	—	—
	T	—	—	—	—	—	—	—	—
	H	—	—	—	—	—	—	—	—
	S	—	—	—	—	—	—	—	—
	T	—	—	—	—	—	—	—	—
	O	—	—	—	—	—	—	—	—
	N	—	—	—	—	—	—	—	—
	E	—	—	—	—	—	—	—	—
	S	—	—	—	—	—	—	—	—

Fact and Legend

By Mrs. Marburger

Aquamarine – Fact and Legend

The gemstone Aquamarine is the modern March birthstone as adopted by the American National Association of Jewelers in 1912. It is also the birth stone for the Zodiac sign of Scorpio. Aquamarine is suggested as a gem to give on the 16th and 19th wedding anniversaries.

Aquamarine is a member of the beryl family and ranges in color from an almost colorless pale blue to blue-green or teal. The most prized color is a deep-blue aqua color. It is 7.5-8 on the Mohs scale of hardness and gets its name from Latin words meaning water and sea.

The most valuable aquamarines come from Brazil, but it is also mined in Kenya and Nigeria, Madagascar, Zambia, Tanzania, Sri Lanka, Pakistan, Afghanistan and Russia. Aquamarines on the market today are usually faceted, but when cut as a cabochon, they may display a cat's eye effect known as asterism.

Some gemstones are heated to high temperatures to enhance the color and/or clarity of a stone. Aquamarines are often heat treated to change a blue-green or teal colored stone to a pure blue. This results in a permanent color change.

Since early times, aquamarine has been believed to endow the wearer with foresight, courage, and happiness. It is said to increase intelligence and make one youthful. As a healing stone, it is said to be effective as a treatment for anxiety and in the Middle Ages it was thought that aquamarine would reduce the effect of poisons.

A legend says that sailors wore aquamarine gemstones to keep them safe and prevent seasickness.

Excerpts taken from www.bernardine.com.



Bloodstone – Fact and Legend

Bloodstone, green jasper dotted with bright red spots of iron oxide, was treasured in ancient times and served for a long time as the birthstone for March. This attractive chalcedony quartz is also known as heliotrope because in ancient times polished stones were described as reflecting the sun: perhaps the appearance of the gem reminded the ancients of the red setting sun, mirrored in the ocean.

Medieval Christians often used bloodstone to carve scenes of the crucifixion and martyrs, for which reason it was also dubbed the martyr's stone. According to the legend about the origin of bloodstone, it was first formed when drops of Christ's blood fell and stained some jasper at the foot of the cross. A beautiful example of carved bloodstone with the seal of the German Emperor Rudolf II can be seen at the Louvre in Paris.

Even today, finely pulverized bloodstone is used as a medicine and aphrodisiac in India. Perhaps that explains why it is now rather difficult to find fine specimens of bloodstone on the market. Bloodstone is mined in India, Australia, and the United States.

In ancient times, bloodstone was thought to be able to stop hemorrhages with the merest touch. Some believe it relieves stomach and bowel pain, strengthens blood purifying organs, and improves blood circulation. Bloodstone is also thought to have a positive influence on a bladder. Lore claims Bloodstone is used to help one become more knowledgeable in the ways of the world suggests it is a very magical stone.



A Rock Hound is Born

By Roger Wolf

It was a mild summer day in 1958 and I was where I spent much of my time as a young boy growing up in central Iowa. I was down on the Raccoon River fishing. The fishing was slow, as a good rain had flushed my honey hole, or so I thought. It was still a great spot to skip rocks, climb trees, catch frogs or try to hit a squirrel or a muskrat with a stone.

I had just landed a small catfish when I saw an old man walking down the bank to a large sandbar, maybe 100 yards from my fishing hole. I watched as the old man meticulously started at one end of the bar and worked his way to the other, stopping occasionally to pick something up and put it in his sack. Then this old man did something different. He picked something up, and with a spring in his step that I had not noticed before, went to the water's edge, washed something off, looked at it for some time and then put it in his pocket. Well, knowing that you only put good stuff in your pockets, like marbles, baseball cards, money... Gold, this could be gold! Everyone knows you find gold in rivers. I thought it was time to check this out.

I walked down the bank to the sandbar and made my way towards the old man. "What ya doin' Mister?" Little did I know that this was the beginning of an 18-month friendship that would stay with me the rest of my life. The old man replied, "I'm looking for agates, fossils and Indian artifacts." With what I'm sure was a confused look on my face I asked, "Did you find any gold?" The old man laughed and replied, "No, I didn't find any gold but I'll show you what I did find." He pulled a very nice Indian arrowhead from his pocket and handed it to me to look at. Then he opened his sack and pulled out 3 small Lake Superior agates and 4 or 5 nice pieces of petrified wood and said, "This is what I'm looking for." My immediate reply was, "Can I help?"

I spent the next 3 or 4 hours walking and talking with my new friend, Henry, on that sandbar on the Raccoon River. He told me of places he had been, looking for his treasures and places that he still wanted to go. He told me about how the agates were formed and how the glaciers brought them here. We talked about how the Indian had made the arrowhead that Henry had found and we talked

about the squirrel that I missed with the stone that day. Henry was sure the squirrels name must have been Lucky! I found a few Lakers that day, after Henry showed me what to look for. One of them is still among my treasures.

Henry Stevens would later show me how to cut, polish and tumble rocks as he did with many young people in Jefferson, Iowa. Henry's home was often a gathering place for children after school as he took the time to show them his rock, fossil and artifact displays, explaining how rocks have been used as tools, how they formed and sharing the excitement of being the first human being to see and touch a rock that was formed millions of years ago.

I moved away from that small Iowa town, less than 2 years after meeting my friend, Henry, but whenever I get back that way I have to check to see if that old river has put that sandbar back where it belongs...maybe I'll run into a young boy fishing.

I recently sold my fishing tackle supply company in Lincoln, Nebraska and have semi- retired. I have started a small company called "The Rock Tumbler" and sell lapidary (rock cutting and polishing) equipment and supplies on my web site; www.therocktumbler.com.



President's Message

by Terry Anderson

2008 Elected Officers

President	Terry Anderson	402-826-0480	cajunbrat@neb.rr.com
1st Vice President	Roger Pittard	402-759-4623	rogerp@dtmspeed.net
2nd Vice president	Charles Wooldridge	402-325-8849	charles.wooldridge@bhss.ne.gov
Treasurer	Vera Lyman	402-464-6089	
Secretary	Sharon Marburger	402-792-2348	mamamar@windstream.net
Board Member	James Atkins	402-483-1610	jna@inetnebr.com
Board Member	John Harrison	402-792-2337	jh21923@alltel.net
Board Member	James Marburger	402-792-2348	jm24122@windstream.net
Board Member	Al Stewart	402-483-1044	mmstewart@inebraska.com



Terry Anderson

Nominating Committee Long Range Planning & By-Laws Committee

3 Years	Vera Lyman	3 Years	Charles Wooldridge
	Edward Ridge		Phyllis Parks
2 Years	John Harrison	2 Years	Susan Taylor
	Aulden Stewart		Edward Ridge
1 Year	Mary Pittard	1 Year	Vera Lyman
	Phyllis Parks		Roger Pabian

Sorry Terry was busy and did not provide the P&S with a President's Message this month.

(Answers to puzzles on Page 6)

- BLOODSTONE (March)
- PERIDOT (August)
- EMERALD (May)
- AMETHYST (February)
- SAPPHIRE (September)
- TURQUOISE (December)
- TOPAZ (November)
- DIAMOND (April)
- GARNET (January)
- TOURMALINE (October)
- MOONSTONE (June)

STANDING COMMITTEES

Education/Librarian	Roger Pabian
Field Trips	James Marburger
Historian	Sharon Marburger
Membership Record	Edward Ridge
Programs	Charles Wooldridge
Property	James Marburger
Refreshments/Door Prizes	Andrea Anderson
Youth Activities	Kay Jurgens, Vera Lyman, Judy Reilly
Auditing Committee	John Harrison, Roger Pabian, James Marburger
Geology Day Coordinator	Roger Pittard
MWF Liaison	Vera Lyman
Scholarship	Vera Lyman
Christmas Party	Edward Ridge
2008 Show	Roger Pabian
2008 Swap	Charles Wooldridge

(answers in order)

I N D R O M O S S R F Q Z D L T
 E T R S W E E T M A T E R T A N
 O K X U N I K S E K A N S A N I
 M A B A N D E D O M U G A C A
 T R E F R L K H Y D G O U M D
 O S X T I X N E A P U N S B
 O G U N I A A T X E O A T B
 O I T A C I F I T R O F O R
 I X Z E C A L Y Z A R C B U
 S T E N O N M T R O S E I Ö
 P T U M E F A I R B U R N
 B A E T A L T E T I R R U T I L
 A E R M S D A E H Y R D O L S O
 T X T R O I R E P U S E K A L A
 S D E N D R I T I C M N O T R N

Lincoln Gem and Mineral Club

Proudly Presents its 50th Annual
Gem and Mineral



SHOW

“Our Golden Anniversary”

June 20-22, 2008



In conjunction with the Annual Conventions of the
**Midwest Federation of Mineralogical Societies and the
Nebraska Association of Earth Science Clubs**

Pershing Center

(lower level)

26 Centennial Mall South

Lincoln Nebraska

Three Great Days of

Education and Entertainment

Featuring Dealers, Gemstones, Minerals, Agates, Fossils, Jasper, Petrified Wood, Jewelry, Gem and Jewelry Making Equipment and Supplies, Demonstrations, Educational Programs, Rough and Uncut Gems, Children's Activities, and much more.

*******Discount Coupon*******

Fun for the whole family

Hours: Friday, June 20, 9-7; Saturday, June 21, 9-7; Sunday, June 22, 10-5

Admission: Adults, \$5.00; children under 12, free with adult;

3 day pass, \$12.00

Bring this coupon for \$1.00 off. Good for all adults in party.

THE ROCK TUMBLER

A DIVISION OF WOLF ENTERPRISES

Your Factory Authorized Full Line Lortone Dealer

Savings - Service - Selection



www.therocktumbler.com

Roger Wolf, Owner

1011 N. 79th Street, Lincoln. NE 68505, (402) 489-1105

roger@therocktumbler.com

J.J. & L. Rocks and Minerals

COME SEE US FOR YOUR ROUGH NEEDS

GEMS - CABS - SLABS - MOUNTINGS

STERLING SILVER - GOLD FILLED - 14K GOLD

SILVER SUPPLIES - TOOLS - MACHINERY - NEW AND USED

CUSTOM SERVICES FOR SLABS, FLAT LAPPING, AND CABOCHONS

STARTING OUR 33RD YEAR

330 LOCUST HICKMAN, NE 68372-0068 PHONE 402-792-2337

"PROVIDING SUPPLIES FOR THE NOVICE TO THE DISCRIMINATING ROCKHOUND"

PLEASE CALL FOR APPOINTMENT

Advertising by rock-hobby business or interest is permitted with the approval of the Board. The rate is set at \$15.00 per full page; \$7.50 per 1/2 Page; \$5.00 per 1/3 page and \$3.75 per 1/4 page (min) per issue, paid in advance. These ads will be placed through out the bulletin a space permits.

Subscription to the Pick & shovel is \$10.00 per year mailed.

Dues to Lincoln Gem & Mineral Club are as follows:

Adults (age 16 and over) \$10 per year; Juniors (age 12 to 16) \$2 per year; Family membership (Couple, resident children under age 16) \$22 per year. New memberships must be approved by the Board, after applicant attends at least one meeting of the Club and pays the above dues plus a \$5 registration fee.

Meetings: Third thursday, September through May except December & January. Those dates will be announced. The meetings are held at Bethany Park Indoor Shelter, at Cotner and Vine Street.

Mail Exchange Newsletters to:
 Lincoln Gem & Mineral Club
 P.O. box 5342
 Lincoln, Nebraska 68505-0342
 or E-Mail Newsletters to:
jna@inetnebr.com

L.G.M.C. Web address-Courtesy of Jim Atkins
<http://incolor.inetnebr.com/jna/gemclub/lgmc.htm>

Your *Pick & Shovel* staff:

Publisher: Lincoln Gem & Mineral Club, Inc. P.O. box 5342,
 Lincoln, Nebraska 68505-0342

Editor: Jim Atkins 3028 So. 35th Street, Lincoln Nebraska 68506
 E-mail: jna@inetnebr.com

Circulation: Phyllis N. Parks 402-476-6798

Business Reporter: Vera Lyman 402-464-6089

News Reporters: All Members

The *PICK & SHOVEL* is the official publication of the Lincoln Gem & Mineral Club, Lincoln, Nebraska. Articles and items appearing within may be reproduced in other club bulletins, provided proper credit is given to the *PICK & SHOVEL* and the author and that a reprint of the bulletin is sent to the editor of the *PICK & SHOVEL*.



The purpose of this corporation shall be to study, promote an interest in, and disseminate knowledge of lapidary and various Earth Sciences including by not necessarily limited to Geology, Paleontology and Mineralogy. It shall be a particular purpose of the corporation to provide education in these fields to its members and the general public, especially to youth and student groups.