

# THE PICK & SHOVEL

Volume 49 Issue 8 April 2007

Lincoln Gem & Mineral Club - Lincoln Nebraska

## General Meetings & Board Meetings

### Board Meetings

Gere Library - 7 PM room 1

May 2, 2007

September 5, 2007

October 3, 2007

November 7, 2007

December 5, 2007

### General Meetings

All general meetings will be held at the Bethany Park Shelter at 7:00 PM on the third Thursday of the month. December and January are the only exceptions.

April 19, 2007

May 17, 2007

June, July August 2007 - No Meetings

September 20, 2007

October 18, 2007

November 15, 2007

December 9, 2007

Grinding Party  
July 15, 2007  
Nature Center Pioneer's Park  
1 PM— 4 PM

## Program

By Charles (Wooly) Wooldridge

Russian Gem Treasures, Ocean Pictures, (7-095) 203-3574, Box 368, 103009, Moscow, Russia, 45 minutes; VHS format, color; 1997; \$25 postpaid (in U.S., order from and make checks payable to: Carol Finnie, 448 E. Mulberry St., Lebanon, OH 45036).

The gem and mineral wealth of Russia is as vast as the expanse of the country itself, and Russian Gem Treasures provides a glimpse inside that cache of riches. Hosted in a conversational style by distinguished writer, lecturer, and traveler Robert "Bob" Jones, the video highlights dazzling cut gemstones, magnificent natural crystals, and massive deposits of such minerals as malachite, rhodonite, and lapis. From the sumptuous diamond-encrusted crowns and scepters of the czars to the humble peasant stone carvings that inspired Carl Faberge, viewers are treated to a montage of stunning photographs and video of breathtaking objects accentuated by scenes of the verdant countryside that yielded these treasures. The video showcases dozens of beautiful pieces, and a shortcoming is that many of these are not specifically identified by narration or captions, especially in the section featuring ornate Faberge eggs and their "surprises" on a rotating turntable. Despite that flaw, this superb program nonetheless reveals a gem and mineral cornucopia that will leave many viewers wanting more.

Paul Bernhard

[http://www.findarticles.com/p/articles/mi\\_m0GDX/is\\_1997\\_July/ai\\_53289756](http://www.findarticles.com/p/articles/mi_m0GDX/is_1997_July/ai_53289756)

Please bring any Russian Gems that you have in your collection for display at the meeting.

# Show Report—2007

By Jim Marburger

## New and Reinstated Members

**A**s the 2007 Lincoln Gem and Mineral Show Chairman, I would like to thank everyone who participated in the show. I wish I could have been here to see it. I have been told that the "CREW" worked together and accomplished what was needed to make the show successful. We presented a quality show for the people who attended.

Special displays were on fossils and artifacts from Oklahoma, along with our own Norm Balliet and his petrified woods. Mr. Bones also provided some up-close fun. I thank everyone who provided a display as each one was special and needed at the show. We have very dedicated members who go beyond the minimum and display numerous cases, and I offer a special, great big thanks to you.

John Harrison donated several hours of his time to build the fluorescent display cases in the trailer, with a little help from me. I hope you were able to see our new lights in this display. Manning this display during the show turned out to be more work than I thought, so I would like to thank Ed Dvorak and Roger Pittard, along with their wives, for running the display.

The new lights in the junior area this year worked out great. Thanks to Danny Cromer and his crew. Without their work, this part of the show would not happen.

I was told that the Dealers were happy, but felt show attendance was down. The demonstrators provided wares and special views of the hobby. We had some new faces in the demonstrators with the laser art booth.

There are many other people who helped out with the show, too many to mention individually. Everyone, named and not named, are thanked equally. Every job is important and the show COULD NOT go on without each and every person.

Many things must come together to have a successful show and promote the hobby. I challenge each person to jot down thoughts on what did and did not work with this year's show and let me know. All thoughts will be shared with Roger Pabian, who is the 2008 show chairman. He has the daunting job of coordinating everything to make next year's MidWest Federation Show a success.

Remember, your input in the club and work in the show (our means of support) is the backbone of our club. Everyone's involvement and input makes new members and old members feel united and working toward a common goal. Additionally, we are passing on our love of the hobby and knowledge to others.

Thanks again  
James Marburger

Please add these following names and addresses to your "Who's Who"—

Richard Lieb           421-3738  
5029 Prince road  
Lincoln, NE           68516-3126

Sharon Warnke       483-2356  
8000 Cherrywood Drive  
Lincoln, NE           68510-2513

Stella Thiessen       476-5269  
1519 Supior #13  
Lincoln, NE           68502

Bharat Surender      475-2591  
2125 Garfield Street  
Lincoln, NE           68502

Steve May           (402) 792-3030  
16300 Hickman Road  
Roca, NE              68430

Adam Mueller         466-6772  
3040 North 60th Street  
Lincoln, NE           68507

James Null            467-2763  
6515 Fremont Street  
Lincoln, NE           68507-1849



# S.C.O.R.E.

(Science Camps Offer Rewarding Experiences)

By Jim Marburger

Our club has a unique opportunity this year. At the end of my term as president, I was contacted by Marla Smith, the director and founder of a summer science camp in Imperial, Nebraska. The camp is called S.C.O.R.E. (Science Camps Offer Rewarding Experiences). This June is the 12<sup>th</sup> anniversary of the camp. We have been asked to provide a fluorescent display and a display of rocks and minerals for the first session. I believe this will be a great opportunity to share some of our knowledge. There will be 200 to 300 first grade through sixth grade students attending camp this year. They are from Chase, Perkins, and Dundy counties. Wow! How many new rockhounds could there be?


Dr. Robert Diffendal from the Conservation & Survey Division of the University of Nebraska has been a part of this summer camp for over ten years. He would like to see us participate, as our traveling displays are very good.

I plan to attend the camp this year. It will take place June 11 – 15, 2007. The fluorescent display will be featured on Monday and Tuesday at the school. Dr. Diffendal will do the presentations on Wednesday and Friday, using our traveling display for a portion of his talks. We have been asked to do rock polishing demonstrations on Thursday at Champion Lake. Four sessions are scheduled for the mornings and four sessions in the afternoons, with the sessions lasting 20 to 30 minutes. Lodging and food will be provided to the presenters.

I would like to see our others in our club take part in this venture. If you would be willing to help with the presentations, please let me know.

The following is part of the brochure for the S.C.O.R.E. camp.

**S.C.O.R.E. 2007**  
 Science Camps Offer Rewarding Experiences  
**"The Earth and Beyond"**



Mackenzie Hite

Presented by:  
 The Imperial Grade School Foundation  
 (in cooperation with Chase County Schools)  
 Camp Headquarters:  
 520 East 9<sup>th</sup> Street, Imperial, NE

**JUNE 11-15, 2007 (Grades 1-6)**  
**JUNE 20-22, 2007 (Grades 7-8)**  
**JULY 26-30, 2007 (Grades 7-10)**

Register online at:  
[www.ccschools.cc/score](http://www.ccschools.cc/score)  
 or [www.chase3000.com](http://www.chase3000.com)

**What is S.C.O.R.E.**  
 S.C.O.R.E. is an award-winning science program co-founded by Sue Renken and Marla Smith in 1989. The camps offer exciting programs and activities that stimulate young scientists and inspire them through hands-on experiences in an open, natural, and enjoyable setting. Now in its 12<sup>th</sup> year, students will participate in an adventure of a lifetime.

**S.C.O.R.E. STAFF**

Project Director/Curriculum .....	Marla Smith
Assistant Director .....	Kim Spady
Camp Directors .....	Ellen Brogie, Linda Lakey, Nicole Long
Registration .....	Chelsea Zuege
Volunteers .....	Lynn Luhrs
Hospitality .....	Jill Moline
Snacks .....	Char Kline

**1-2 GRADE CAMPS**  
 8:00-11:30 Monday-Friday OR  
 1:00-4:30 Monday-Friday  
 June 11-15, 2007  
**Camp Cost:**  
 \$75 for student Residents  
 (IURWD grant: You must reside in Chase, Dundy, or Perkins County)  
 Non-resident cost=\$95




**Camp Highlights:**  
**"The Earth and Beyond"**  
 Explore the solar system with the Kansas Cosmospere and Space Center, enter the giant "earth balloon," and Doc Gizmo will fascinate you with his amazing science demos. Some of the activities include: edible fossils, "What Big Teeth you Have", dinosaurs, amazing rocks, minerals, make your own rock collection, dig for fossils, recycling, learn about soil, air, water, conservation, animals that inhabit the earth, volcanoes, earthquakes, geyser, airplanes and gliders, weather, tornado in a bottle, instant snow, lightning and electrical safety, rainbows, field trips to Cox's Ponds, Champion Lake, and much much MORE!!






**3-4 GRADE CAMPS**  
 8:00-11:30 Monday-Friday OR  
 1:00-4:30 Monday-Friday  
 June 11-15, 2007  
**Camp Cost:**  
 \$75 for student Residents  
 (IURWD grant: You must reside in Chase, Dundy, or Perkins County)  
 Non-resident cost=\$95





**Camp Highlights:**  
**"The Earth and Beyond"**  
 Kansas Cosmospere and Space Center will help you explore the world of robotics, explore space in the Star Lab, Chad Johnson of Edgerton Explorit Center will take you on a "Mission to Mercury." How do you keep an ice cube from melting? Watch out, Doc Gizmo is back!! Other activities include: toys in space and the Astroblastor/Super-rovax, making dinosaur bones, excavate and assemble complete dinosaur skeletons, discover amazing rocks & minerals, recycling, learn about soil, air, water, conservation, animals that inhabit the earth, volcanoes and earthquakes, geyser, airplanes and gliders, weather, lightning and electrical safety, explore the river, the prairie and the forest at Swinging Bridge Ranch, artesian springs at Cox's Ponds, and much much MORE!!



**5-6 GRADE CAMPS**  
 8:00-12:00 Monday-Friday OR  
 1:00-4:00 Monday-Friday  
 June 11-15, 2007  
**Camp Cost:**  
 \$95 for student Residents  
 (IURWD grant: You must reside in Chase, Dundy, or Perkins County)  
 Non-resident cost=\$110

**Camp Highlights:**  
**"The Earth and Beyond"**  
 The Kansas Cosmospere and Space Center instructors will take you on a "Mission to Mars." To get to Mars you must launch your rocket, design and build a robotic lander that will survive impact on Mars, and maneuver your robotic lander around the planet. Chad Johnson of Edgerton Explorit Center will help you experience "Earthquakes." Explore the world of amazing rocks, minerals, gems, crystals and fossils. Build and race "solar powered micro-vehicles," explore the science behind "weather," learn to use a GPS system and compass to solve the puzzles and survive. Build your own telescope and operate a real one. Design, construct, and test multiple rock-ets, airplanes, and hot air balloons, explore the history of the earth, river investigations, ethanol and much much MORE!!

## GENERAL MEETING

March 15, 2007, Bethany Park Shelter

The meeting was called to order by First Vice-President Terry Anderson at 7:14 p.m. Eighteen adult members and one youth were present. One guest, Sharon Warnke, also attended. Welcome to new member Richard Lieb!

**OLD BUSINESS** - The minutes for the February meeting were published in the Pick & Shovel. Jim Marburger moved to accept the minutes as printed, second by Roger Pabian. Motion carried. The treasurer's report for February was published in the Pick & Shovel. Roger Pabian moved to accept the report as printed, second by Charles Wooldridge. Motion carried.

Show Chairman Jim Marburger offered the following report: Everything is about ready to go. Fluorescent display will be ready to be set up. The Juniors were previously authorized to purchase twelve new lights, which Jim Marburger purchased.

**NEW BUSINESS** - No new business was presented.

The meeting adjourned to program at 7:44 p.m. on a motion by Charles Wooldridge, second by John Harrison. Motion carried.

The program on Wyoming fossil fish was very interesting. Thanks for providing it, Woolly!

Respectfully submitted,

*Sharon Marburger*



## LINCOLN GEM & MINERAL CLUB, INC. BOARD OF DIRECTORS

February 28, 2007, Gere Library

The meeting was called to order at 7:00 p.m. by Past President Jim Marburger. Board members present were Vera Lyman, Sharon Marburger, Jim Marburger, Charles Wooldridge, John Harrison, and Jim Atkins. Ed Ridge attended.

The minutes of the February Board meeting were distributed. Charles Wooldridge moved to accept the minutes as amended, second by Jim Atkins. Motion carried. The Treasurer's report for February was distributed. John Harrison moved to accept the report, second by Sharon Marburger. Motion carried.

**OLD BUSINESS:** The fluorescent lights have been received. The second handheld unit arrived, too. Jim Marburger purchased batteries and inverters for both handhelds.

Jim Marburger gave a show report. He reserved two motel rooms at the Townhouse Motel for Mr. Bones and Bill Breckinridge. All the committees are filled.

Lights for juniors - Harbor Freight has the lights Danny Cromer is interested in for about half the cost of elsewhere. Jim Marburger will pick up the lights.

**NEW BUSINESS:** It was suggested that we look into possibly getting new speakers/amplifier for projector. Charles Wooldridge moved that we take \$3,000 out of youth fund and transfer to the education/scholarship fund for a one-time expense for the fluorescent lights and associated equipment, second by Sharon Marburger. Motion carried.

Marla Smith with SCORE in Imperial, Nebraska would like to borrow the traveling displays, and the fluorescent display. Jim Marburger will provide further information to the Pick & Shovel and will discuss at general meeting.

John Harrison asked visitors at Geology Day if their children would be interested in joining the juniors. Six youth signed up. The list was given to juniors' committee member Vera Lyman for followup.

Meeting adjourned at 7:51 p.m. on a motion by Sharon Marburger, second by John Harrison. Carried.

Respectfully submitted,

*Sharon Marburger*

## LGMC Treasurer's Report February 2007

Pinnacle Checking Balance February 28, 2007 \$157.30

Receipts:

Member Dues	159.00	
Demo Fees—2007 Show	350.00	
*Transfer—MM To Checking	1,000.00	
*Cert of Deposit—#4681 to Checking	5,000.00	
Show Change Return—suspense	1,200.00	
Sat. Gate Receipts Show	3,172.00	
Sun. Gate Receipts Show	2,325.00	
Junior booth Receipts	500.65	
Plant Sales at Show	<u>72.00</u>	13,778.65

Payments:

Schwarz Printing Co.—March P&S Print	96.30	
FedEx Kinkos-March P&S insert	7.50	
FedEx Kinkos-70 Copies of Who's Who	22.84	
Rixstine's –Rockhound of the Year	86.35	
Jim Marburger-2 inverters/blk light	64.18	
JJ&L Rocks & Minerals –SCLEF-Equip	484.25	
Pinnacle-Show Change –Suspense	1,200.00	
Clear Channel Radio-Show Ad	1,799.00	
Town House Motel-Spec Feature	386.40	
Don Young, - Show Security	580.00	
Bill Breckenridge—Spec Feature	400.00	
Old Country Buffet—Show Breakfast	168.30	
Timothy Seeber ( Mr. Bones ) Spec Feature	1,200.00	
Daniel Cromer—Junior supplies	24.34	
Peterson's Rocks & Gems (Jrs-Geodes)	24.00	
Carroll's Originals– Junior supplies	8.00	
Sunwest Wholesale– 30 Plants	120.50	
Pershing Center—Fri Set/up Refreshments	387.62	
Pershing Center-show Rent & Expenses	<u>3,310.40</u>	10,369.98

Pinnacle Checking Balance March 31, 2007 \$3,565.97





# 4<sup>th</sup> Annual

## Nebraska Mineral & Gem Club

# Rock Swap

(Rocks to Sell, Buy, or Trade)

## Sunday, June 3<sup>rd</sup>, 2007

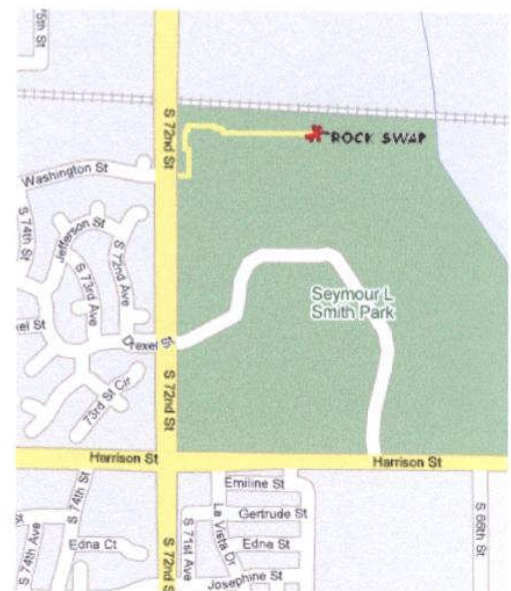
9 a.m. to 5 p.m.

Seymour Smith Park in Omaha, Nebraska  
6802 Harrison Street (Enter off 72<sup>nd</sup> Street)

Rocks, minerals, fossils jewelry, equipment, and other items related to the rock hobby, lapidary, or jewelry making.

Cash sales are conducted with Swapper Bucks that are available from the Club Treasurer.

For further information: Nebraska Mineral & Gem Club, P.O. Box 24095, Omaha, NE 68124  
or Richard Farlow (402) 332-4960  
[www.nerockgem.org](http://www.nerockgem.org)



Enter off from 72<sup>nd</sup> Street from Washington Street and follow around Soap Box Derby Race Track

# Midwest Federation of Mineralogical Societies Convention

Lincoln Gem & Mineral Club  
P. O. Box 5342  
Lincoln NE 68505  
50<sup>th</sup> Annual Show, June 20-22, 2008  
and  
Midwest Federation of Mineralogical Societies Convention

## PROJECTED INCOME:

14 Dealers @ \$550.00	\$7,700.00	
6 Selling Demonstrators @ \$80.00	480.00	
Gate Admissions---Friday, June 20	1,000.00	
Saturday, June 21	2,800.00	
Sunday, June 22	<u>2,800.00</u>	
Total Receipts		\$14,780.00

## PROJECTED EXPENSES:

### Floor:

Rent, 3 days @ \$1,000.00 per day	\$3,000.00	
½ day @ \$500.00	500.00	
Tables, 200 @ \$5.00	1,000.00	
Chairs, 150 @ \$1.50	225.00	
Round Tables, 5 @\$5.00	25.00	
Drapes and Table Skirts	150.00	
Elevator Operator	200.00	
Commonwealth Electric	850.00	
Security	900.00	

### Promotion:

Radio	\$1,800.00	
Newspapers	900.00	
Miscellaneous	1000.00	\$3700.00
Pre-Printed Flyers		50.00
Handout Programs		150.00
Ribbons and Recognitions		120.00
Special Features		2,500.00
Lecturers 5@ \$50.00		250.00
Decorative Flowers		75.00
Miscellaneous Show Committee	\$50.00	
Floor	20.00	
Ticket Sales	40.00	\$110.00
City/State Sales Taxes		350.00
Auditorium Gate Fee		750.00

### Midwest Federation Expenses:

Meeting and Banquet Space	250.00	
Table Favors	50.00	
Speaker	<u>100.00</u>	
		\$15,305.00
Gross Gain/Loss		-525.00

Less Midwest Federation Share

Net Profit/Loss -525.00

# NAOESCI State Meeting Minutes

## October 8, 2006 1:00 PM Omaha, NE

**Present:**

Richard Farlow, President  
 Roger Pabian, Vice-President  
 Susy McMahan, Secretary-Treasurer  
 Judy Reilly Editor, Gem Palette

Ila Kunc  
 Ray Kunc  
 Donna Farlow  
 Jim Null Delegates, Nebraska Gem & Mineral Club Omaha  
 Kurt Schrant Delegate, Northeast Nebraska Rock Club, Norfolk  
 Ben Vrana Delegate, Loup Valley Club, Schuyler & Columbus  
 Pat Akins Delegate, Lincoln Gem & Mineral Club, Lincoln

Minutes 2005 and Financial Report 2006 read and approved.

**No committee reports.**

**Old Business:** Ben Vrana inquired about \$50 check that was sent by the Schuyler club and not reflected in last year's minutes. Susy will check her records and let Ben know and the check can be re-issued if it had not been cashed. Approved.

**New Business:** After discussion, Kurt Schrant agreed the State Show will be in Norfolk on Mother's Day, May 13, at 1:00. More information will be sent to the clubs as that time approaches. Approved.

Roger Pabian announced that Lincoln would like to host the 2008 state Show, which would be held in conjunction with the Midwest Federation Show. Approved.

Discussion that the sponsor of the State Show may Club's pleasure host a State Swap, with the proceeds going to NAOESCI. There would be no financial obligation to the club to do so. Approved.

Pat Akins offered to build a data base containing all members of NAOESCI clubs for \$200.00. This would take the place of the Gem Palette, which has no editor at this time. Pat would like to accomplish this by January 31, 2007. The Gem Palette would be tabled for the year, while searching for a new editor. The database can be used for interclub communication. Approved.

**Election of officers:**

Susy resigned as secretary-treasurer, Pat Akins volunteered. Richard Farlow, President and Roger Pabian were re-elected by acclamation.

**New Board Members:**

Jim Null, Ben Vrana, Kurt Schrant.

Adjourned 2:20 PM.

**N.A.O.E.S.C.I. Financial Report 9/26/05 to 9/19/2006**

Beginning balance \$3038.63

**Expenses:**

9/27/05 Hartland Checks (New Checks)	\$86.56
9/27/05 Hartland Checks (Stamp)	50.65
11/09/05 Office Depot (Ink Cart)	31.35
11/23/05 Office Depot (Ink Cart exch 2for1)	9.10
11/29/05 USPS Stamps/GP	55.50
12/04/05 Judy Reilly-reimburse Dec. GP	76.49
3/14/06 USPS stamps/GP	66.56
3/14/06 Office Max GP	123.58
5/21/06 Rathman-Obermiller Insurance	339.00
(club Insurance)	
<b>Total Expenses</b>	<b>838.79</b>

**Income:**

1/06 GI donation for a scholarship fund	112.11
Schuyler dues, Insurance, GP	291.25
Omaha dues, Insurance, one GP	398.25
Lincoln dues only	71.00
2/06 Crawford dues, Insurance, GP	90.75
Norfolk dues, Insurance, GP	192.29
Lincoln GP	60.00
3/06 Omaha, pins, patches?	8.25
5/06 Lincoln pins & patches	50.00
<b>Total Income</b>	<b>1229.90</b>

Ending Balance 9/19/2006 \$3527.09

Respectfully submitted,

*Susy McMahan*

Susy McMahan, Secretary-Treasurer NAOESCI

**2006 Elected Officers**

President	Pat Akins Jr.	5017 N. 6 <sup>th</sup> St.	Lincoln, NE	68521	402-477-1322
1 <sup>st</sup> Vice Pres.	Terry Anderson	1113 Co. Rd. 2500	Wilber, NE	68465	402-826-1169
2 <sup>nd</sup> Vice Pres.	Roger Pittard	1013 Road K	Geneva, NE	68361	402-759-4623
Treasurer	Vera Lyman	420 N. 56 <sup>th</sup> St.	Lincoln, NE	68504	402-464-6089
Secretary	Sharon Marburger	332 Locust	Hickman, NE	68372	402-792-2348
Board Member	James Atkins	3028 S. 35 <sup>th</sup> St.	Lincoln, NE	68506	402-483-1610
Board Member	John Harrison	330 Locust	Hickman, NE	68372	402-792-2337
Board Member	James Marburger	332 Locust	Hickman, NE	68372	402-792-2348
Board Member	Charles Wooldridge	6115 Huntington St.	Lincoln, NE	68507	402-325-8849

**Nominating Committee**

3 years	Vera Lyman
	Edward Ridge
2 years	John Harrison
	Aulden Stewart
1 year	Mary Pittard
	Phyllis Parks

**Long-Range Planning  
& By-Laws Committee**

3 years	Charles Wooldridge
	Phyllis Parks
2 years	Susan Taylor
	Edward Ridge
1 year	Vera Lyman
	Roger Pabian

Chairman: Immediate Past-President Jim Marburger

**Standing Committees**

Education/Librarian:	Roger Pabian	MWF Liaison:	Vera Lyman
Field Trips:	Pat Akins, Coordinator	Scholarship:	Vera Lyman
Historian:	Sharon Marburger	Christmas Party:	Edward Ridge
Membership Record:	Edward Ridge	2007 Show:	James Marburger
Programs:	David Heffelbower	2008 Show:	Roger Pabian
Property:	Pat Akins, Jr. James Marburger	2007 Swap:	Roger Pabian
Refreshments/Door Prizes:	Judy Reilly	2008 Swap:	
Youth Activities:	Kay Jurgens, Judy Reilly, Vera Lyman, Susan McMahan		
Housing Committee:	Susan McMahan, Pat Akins, Jr., Charles Wooldridge, Vera Lyman		
Auditing Committee:	John Harrison, Roger Pabian, James Marburger		
Geology Day Coordinator:	2 <sup>nd</sup> Vice President Roger Pittard		

L. G. M. C. web address—courtesy of Jim Atkins:  
<http://lincolnetnebr.com/jna/gemclub/lgmc.htm>

**Your PICK & SHOVEL Staff**

**Publisher:** Lincoln Gem & Mineral Club, Inc., P.O. Box 5342, Lincoln, NE 68505-0342

**Editor:** James N. Atkins 483-1610

3028 So. 35<sup>th</sup> Street,  
Lincoln, NE 68506  
E-mail: [jna@netnebr.com](mailto:jna@netnebr.com)

Circulation: Phyllis N. Parks 476-6798  
Business Reporter: Vera Lyman 464-6089  
News Reporters: All Club Members

The *PICK & SHOVEL* is the official publication of the Lincoln Gem & Mineral Club, Lincoln, Nebraska. Articles and items appearing within may be reproduced in other club bulletins, provided proper credit is given to the *PICK & SHOVEL* and the author and that a reprint of the bulletin is sent to the editor of the *PICK & SHOVEL*.

The purpose of this corporation shall be to study, promote an interest in, and disseminate knowledge of lapidary and various Earth Sciences including but not necessarily limited to geology, paleontology and mineralogy. It shall be a particular purpose of the corporation to provide education in these fields to its members and the general public, especially to youth and student groups.

**J. J. & L. ROCKS and MINERALS**

COME SEE US FOR YOUR ROUGH NEEDS

GEMS – CABS – SLABS – MOUNTINGS  
STERLING SILVER – GOLD FILLED – 14K GOLD  
SILVER SUPPLIES – TOOLS – MACHINERY – NEW AND USED  
CUSTOM SERVICES FOR SLABS, FLAT LAPPING, AND CABOCHONS

STARTING OUR 32<sup>nd</sup> YEAR

330 LOCUST  
HICKMAN, NE 68372-0068

PHONE  
402-792-2337

"PROVIDING SUPPLIES FOR THE NOVICE TO THE DISCRIMINATING ROCKHOUND"  
Please Call for Appointment

**LINCOLN GEM & MINERAL CLUB**

Hosts our  
49<sup>th</sup> Annual Show

At  
PERSHING CENTER

226 Centennial Mall South

\*\*\* March 24 - March 26, 2007\*\*\*

Show Chairman - Jim Marburger

Advertising by rock-hobby business or interest is permitted with the approval of the Board. The rate now set at \$15.00 per full page; \$7.50 per 1/2 page; \$5.00 per 1/3 page; and \$3.75 per 1/4 page (min) per issue, paid in advance. These ads will be placed through the bulletin as space permits.

Subscription to the Pick & Shovel is \$10.00 per year mailed.

Dues to Lincoln Gem & Mineral Club are as follows:

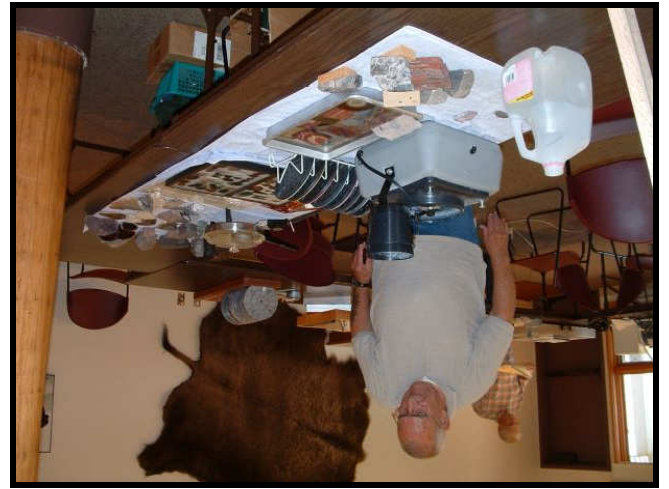
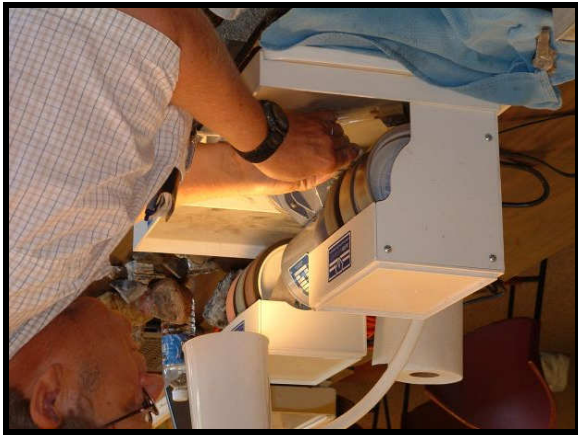
Adults (age 16 and over) \$10 per year Juniors (age 12 to 16) \$2 per year

Family Membership (Couple, resident children under age 16) \$22 per

year

New memberships must be approved by the Board, after the applicant attends at least one meeting of the club and pays the above dues plus a \$5 registration fee.

Meetings: Third Thursday, Sept. through May except December & January to be announced. Held at Antelope Park Indoor Shelter, near 30<sup>th</sup> and Sumner, next to the Veterans Memorial and east of the children's playground.



Grinding Party  
 July 15, 2007  
 Nature Center Pioneer's  
 Park  
 1 PM — 4 PM

**Mail Exchange Newsletters to:**

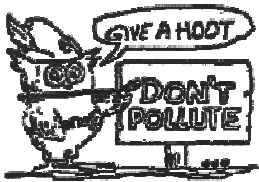
**Lincoln Gem & Mineral Club**

**P O Box 5342**

**Lincoln, Nebraska 68505-0342**

**OR**

**E-Mail Newsletters to: [jna@inetnebr.com](mailto:jna@inetnebr.com)**



**H. E. L. P.**

Help Eliminate Litter Please

