

THE PICK & SHOVEL

Volume 48 Issue 8 April 2006

Lincoln Gem & Mineral Club - Lincoln Nebraska

General Meetings & Board Meetings

Board Meetings

May 3, 2006 - Gere Library - 7 PM room 2
September 6, 2006 - Gere Library - 7 PM room 2
October 4, 2006 - Gere Library - 7 PM room 2
November 1, 2006 - Gere Library - 7 PM room 2
December 6, 2006 - Gere Library - 7 PM room 2

General Meetings

All general meetings will be held at the Antelope Park Shelter at 7:30 PM on the third Thursday of the month. December and January are the only exceptions.

April 20, 2006

May 18, 2006

June, July, August - Off for the summer

September 21, 2006

October 19, 2006

November 16, 2006

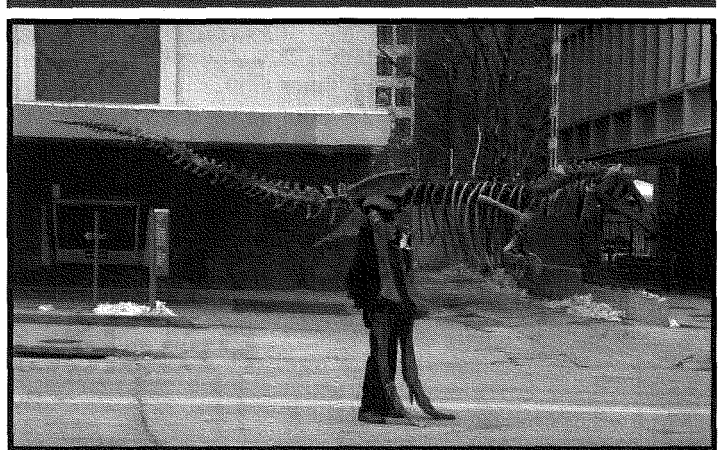
December 10, 2006 (Sunday)

Programs

April: Roger Pabian, Thunder Egg I.

May: Roger Pabian, Thunder Egg II.

T-Rex Found Roaming Downtown Lincoln



Mr. Bones is Tim Seeber, a paleopuppeteer from Denver, Colorado.

Seeber has an art degree and a science and theater background, which he said fits perfectly with operating Mr. Bones. He said he has a group of dinosaur puppets besides Mr. Bones.

For the past six years, Seeber has been performing with Mr. Bones at festivals and school programs. He said he got the idea for Mr. Bones after he needed a Halloween costume several years ago.

Mr. Bones is constructed out of foam, recycled aluminum, cardboard and paper mache. Seeber said he copied the bone structures from the Denver Museum from authentic dinosaur bones, simplifying them and creating them out of cardboard.

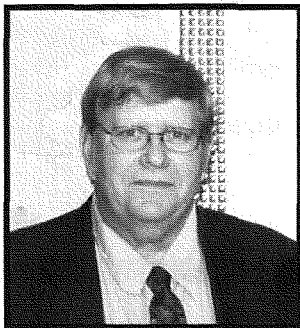
"I'm really into archeology, and always into theater, not that I'm good on stage, but now I go into the technical side," he joked. "I love to be in the audience making people smile. There are thousands of smiles per day, not to mention I eat 1,000 kids a day."

"Oh, they like to come up and ask if they can pet him, asking if he's friendly," he said. "I have to be very slow and cautious when I'm puppeteering him. When I play with these kids, I can't be aggressive because you can really scare them."

Mostly, though, he said their screams are generated from being excited and having fun, not from fear.



President's Message



Jim Marburger

April has come and I have attended and survived the first two shows since I fell. It was a struggle to work the shows, but with the help of John H. and Sharon M., I think it went well. Speaking of shows, both Sharon and I missed our own show and we are looking forward to hearing good reports on its happenings. If you have any concerns or suggestions about the Lincoln show, please take the time to jot them down so

I can address them next year. I will be the 2007 Show Chairman and I will be setting up my committees very soon. Planning the event with new ideas and (hopefully) new faces is going to be fun. The Dealer Chairman has already made contracts available to the dealers for the 2007 show.

Thanks to everyone who had a part in making the 2006 show a success!!!!!!! It could not be done without you. The limited feedback I have received has been positive.

It looks like the President's Field trip this year will be to Colorado, with a train ride between Durango and Silverton in the mix for me. This trip will be the week after Memorial Day. See the article on the trip in this issue. My time is limited after July 1 by my employer, but I would like to have a second trip to Wyoming if possible. Is there anyone who could lead this trip if I cannot make it?

If you have an idea for a field trip (weekend – day – week), please let Pat Akins or me know so we can set it up. Many clubs in most areas will share trip information with us, just like the Denver Gem and Mineral Guild has in the past. This makes the trips fun.

As the spring passes by quickly, please plan to make club activities part of your summer.

Rock on!

President's Field Trip

By Jim Marburger

The 2006 President's Field Trip is planned to take place May 27 through June 4 in the south central and southwestern parts of Colorado. Possible collecting areas include Wolf Creek Pass, Del Norte, Last Chance Mine at Creede, and Silverton. Many collecting locations are found throughout the area, and I am open to requests and suggestions. Ultimately, Sharon and I plan to spend Thursday, June 1 taking the round trip train excursion between Durango and Silverton. Others are welcome to join us at approximately \$88 per adult and \$42 per child. You can get a slightly lower rate by booking online at <http://www.durangoandsilvertonrailroad.com/tours/tourDetail.cfm/tid/5665>.

Del Norte is located approximately 170 miles southwest of Colorado Springs. An assortment of collecting materials can be found, some of which are geodes, plume agate, and petrified wood.

Wolf Creek Pass is located approximately 35 miles southwest of Del Norte. Geodes, banded agates, and botryoidal agates are found here. Please note that the collecting area is located right next to the highway, so extreme caution is necessary.

The Last Chance Mine at Creede is located approximately 38 miles northwest of Del Norte, and opens Memorial Day weekend. Entrance to the mine is free, and any collecting material is charged at \$2.00 per pound. If you don't have rock hammers or equipment, the mine will provide these at no charge. The mine elevation is 10,600 feet above sea level, so be aware that altitude sickness and shortness of breath can occur. Historic museums and tours are also available. Collecting materials found are

Colorado Sow Belly Agate (amethyst vein agate); some turquoise ranging in color from yellow-green to pale and deep greens and blues, some flecked with iron-based brown inclusions; specimens of argentiferous galena and argentite that sometimes assay as high as 30 troy ounces of silver per ton.

There are three *primitive* cabins available at the mine at no charge, but you must make advance reservations. Call Jack or Kim Morris at 719-275-0896 or 719-238-7959 for reservations. Cabins are provided with water, wood, and bedding. Offer a donation if you use a cabin, to fund mine restoration work. See Rock & Gem, April 2006. Several campgrounds, state and private, are found in the area surrounding Creede, Wolf Creek Pass, and Del Norte. We can provide motel information to interested persons.

Since we will be in the Silverton area, I'm considering some rhodonite collecting. I'm also looking into the possibility of turquoise collecting in the Cripple Creek area. More to come later.

I would like to point out that, although I've basically discussed cutting materials, a wide variety of minerals and crystals can be found in the mine tailings. Some specific specimens are clear and smoky quartz, amethyst, galena, calcite, pyrite, chalcopyrite, silver, and malachite-azurite.

I will have more information later. To facilitate planning, let me know if you are interested in participating in this field trip. Also, let me know if you are interested in visiting any specific locations so we can try to work them into the trip.

Message From the Past

The following is an excerpt from May 1964 "The Pick and Shovel", author Dorothy Engelhart. Note that Mrs. Engelhart's observations of nearly 42 years ago still hold true today.

What is my part in this many-sided, fascinating hobby of ours? After meeting a man last night who collects Mason fruit jars, I took stock of myself and I'm sure that I get much more out of my hobby of being a rockhound (not the actual collecting, but the fringe benefits).

These include a gorgeous sunset after a day in the field, the rainstorm or a rainbow. When I think I'm all alone and around the bend comes another collector, then the Gab Session that follows always quickly makes the stranger of a moment ago, a friend.

Social contacts are one part of the many objectives of a social or hobby group. To be able to hunt, swap, talk or lie; to hold group meetings and field trips are most satisfying. The institution of the field rock hunting trip in the great outdoors is a priceless adjunct to our well-enriched hobby, accompanied by the good fellowship which seems to thrive with added zeal over a campfire with a can of beans.

I've just decided that one doesn't need to know a thing about mineralogy to be a rockhound, a silly statement, but it is true. The finding of the source or location of a certain mineral is an adventure, a thrill never to be forgotten. A desire to collect beauty, variety and rarity are all that's needed. The Calcite Group alone are numbered in the 3,000s, and each of these 3,000 forms are of boundless beauty. My point is that you can possess all of this without a degree.

Rockhounds, I've found, are always curious, always wanting to know more; so of course this leads one to Geology. After the feast of beauty my eyes beheld, with my curiosity I ran head-first into a wall of complete ignorance. I must attack this problem and my waging war of study continues to find me grinding away at books. I'm sure with all the winter nights of my lifetime I'll never get done. What I've planned so far will take 100 years.

Of course, in the meantime, the art of tumbling, lapidary, silversmithing, sphere making and the polishing of slabs become enticing. Then beware of the next lovely trap - faceting those lovely crystals that are sitting on the shelf.

Field trips are here again. Yes, it is truly a never ceasing fascination - ROCKHOUNDING.

HELP

I am putting a call out to everyone that has access to a computer and the internet. I would like to reduce the cost of the Pick & Shovel by sending it by e-mail in a PDF form. The file size will be about 1.5 megabytes in size.

By doing this it lowers our printing and mailing cost, plus you can get the Pick & Shovel in COLOR and faster. When you receive it you can print it in black & white or in color depending on your preference. You will need a program called **Adobe Reader** to read and print out the Pick & Shovel. This is a free program and can be found at:

<http://www.adobe.com/products/acrobat/readermain.html>

Please check the area called System Requirements to be sure you get the right version for your system before downloading and set up.

Please e-mail me at jna@inetnebr.com to let me know if you want the e-mail version. Otherwise you will continue to get the snail mail version.

Vera Mae Lyman

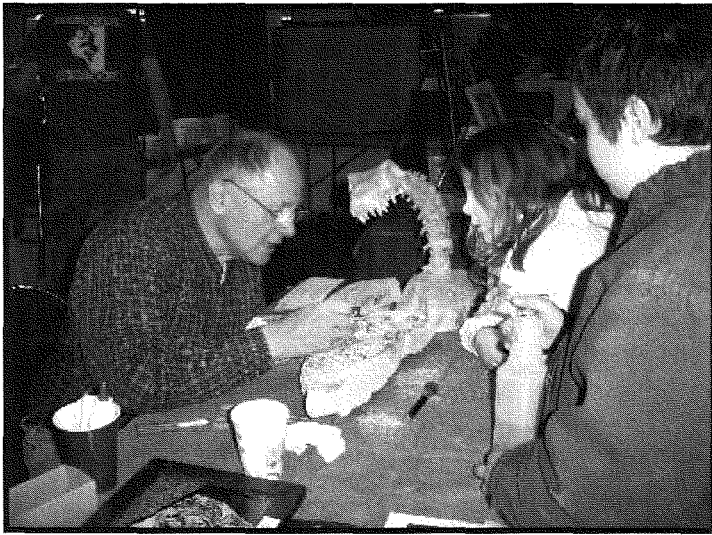
Our very own Treasurer, Vera Lyman, was hospitalized in early April for coronary bypass surgery. Vera had a persistent cough and occasionally complained about shortness of breath. When she went to the doctor for a check up, the doctor recommended immediate surgery.

The operation lasted 1½ hours instead of the anticipated 3½ hours, which the doctors attributed to Vera's overall good health and daily walks.

Vera is home now and doing very well.



Annual Club Show 2006

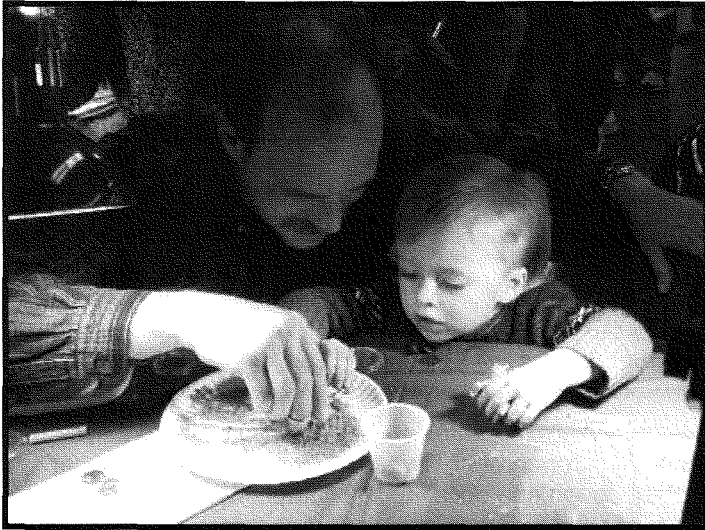


(Photo by Judy Reilly©2006)

Ben Verana doing fossil preparation.



(Photo by Jim Atkins©2006)



Dan and Gavin Dexter-Guy doing the Gem dig.

Photo by Judy Reilly©2006



This year the kids had a hands on polishing Horn Coral.

Photo by Judy Reilly©2006

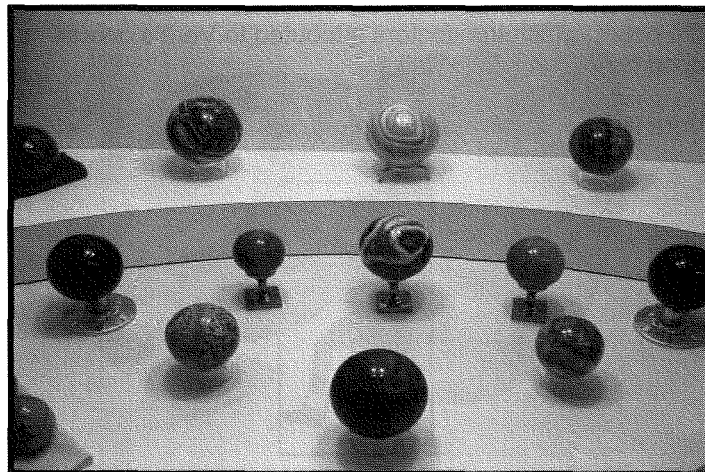


Photo by Jim Atkins©2006

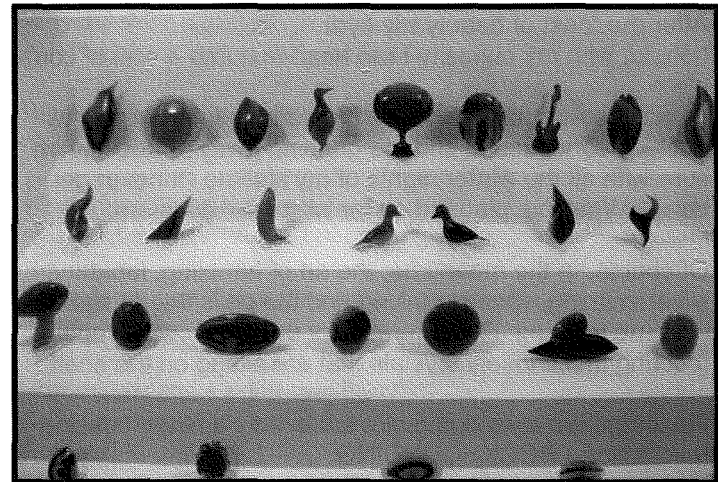


Photo by Jim Atkins©2006

Annual Club Show 2006



Dave Nixon - Flint Knapping
Photo by Judy Reilly©2006



Jim Reilly is T-Rex's lunch
Photo by Judy Reilly©2006



Photo by Jim Atkins©2006



Mary
Tanner

Stone
Carver

Photo by
Judy Reilly
©2006

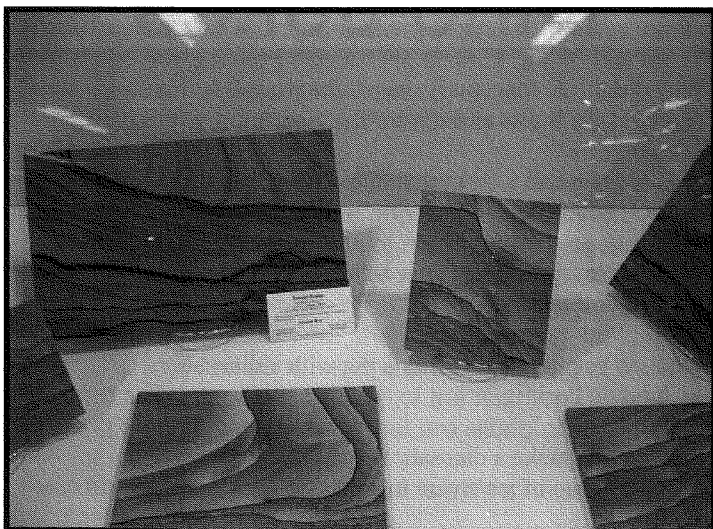


Photo by Jim Atkins©2006



Photo by Jim Atkins©2006

Maeve Hemmer

At The rook and Miro Sho I SoD Kate
 and we got to eat cade. Annette daughter EMILY
 got Con and me a cat. at The rook and Miro Sho
 I got to MAG a Chor Bit it was RILE fon.
 It was wer The CRCIC was we got to RID
 wer The TIGRS rod TO Tit CRCIC.
 I like The rook and Miro Sho.
 The end
 AIIICIA

Maeve

Annette Gifford's little five year old neighbor girl, Maeve Hemmer, gave this essay to her teacher after attending our Gem and Mineral show this year.

Maeve's teacher gave us the translation: "At the Rock and Mineral show I saw Kate and we got to eat candy. Annette and daughter Emily got Con and me a cat. At the Rock and Mineral show I got to make a trilobite. It was real fun. It was where the Circus was. We got to ride. Where the tigers rode to the Circus. I like the Rock and Mineral show. The End"

Happy Easter



Dino Jokes

Why did the Archaeopteryx catch the worm?

A: Because it was an early bird!

What do you call a fossil that doesn't ever want to work?

A: Lazy bones!

What makes more noise than a dinosaur

A: Two dinosaurs

What do you get if you cross a pig with a dinosaur?

A: Jurassic Pork!

How do you make a dinosaur float?

A: Put a scoop of ice cream in a glass of root beer and add one dinosaur!

2006 ELECTED OFFICERS

President	James Marburger	332 Locust	Hickman, NE	68372	402	792-2348
1 st Vice Pres.	Pat Akins, Jr.	5017 N. 6 th St.	Lincoln, NE	68521		477-1322
2 nd Vice Pres.	Roger Pittard	1013 Road K	Geneva, NE	68361	402	759-4623
Treasurer	Vera Lyman	420 N. 56th St.	Lincoln, NE	68504		464-6089
Secretary	Sharon Marburger	332 Locust	Hickman, NE	68372	402	792-2348
Board Member	James Atkins	3028 S. 35th St.	Lincoln, NE	68506		483-1610
Board Member	John Harrison	330 Locust	Hickman, NE	68372	402	792-2337
Board Member	David Heffelbower	1431 D St.	Lincoln, NE	68502	Cell	890-2794
Board Member	Charles Wooldridge	6115 Huntington St.	Lincoln, NE	68507		325-8849

Nominating Committee

3 years	Vera Lyman
	Edward Ridge
2 years	John Harrison
	Aulden Stewart
1 year	Mary Pittard
	Phyllis Parks

Chairman: Immediate Past-President Susan McMahan

Long-Range Planning & By-Laws Committee

3 years	Charles Wooldridge
	Phyllis Parks
2 years	Susan Taylor
	Edward Ridge
1 year	Vera M. Lyman
	Roger K. Pabian

Standing Committees

Education /Librarian:	Roger Pabian	MWF Liaison:	Vera Lyman
Field Trips:	Pat Akins, Coordinator	Scholarship:	Vera Lyman
Historian:	Sharon Marburger	Christmas Party:	Edward Ridge
Membership Record:	Edward Ridge	2007 Show:	Jim Marburger
Programs:	David Heffelbower	2006 Show:	Patrick Akins, Jr.
Property:	Pat Akins, Jr. & James Marburger	2007 Swap:	Roger Pabian
Refreshments/Door Prizes:	Judy Reilly	2006 Swap:	Dave Heffelbower
Youth Activities:	Kay Jurgens, Judy Reilly, Vera Lyman, Susy McMahan		
Housing Committee:	Susy McMahan, Pat Akins, Charles Wooldridge & Vera Lyman		
Auditing Committee:	John Harrison, Roger Pabian & James Marburger		
Geology Day Coordinator:	2nd Vice President		

L. G. M. C. web address—courtesy of Jim Atkins:

<http://incolor.inetnebr.com/jna/gemclub/lgmc.htm>

Your PICK & SHOVEL Staff

Publisher: Lincoln Gem & Mineral Club, Inc., P.O. Box 5342, Lincoln, NE 68505-0342

Editor: James N. Atkins 483-1610
3028 So. 35th Street, Lincoln, NE 68506
E-mail: jna@inetnebr.com

Circulation: Phyllis N. Parks 476-6798
Business Reporter: Vera Lyman 464-6089
News Reporters: All Club Members

The *PICK & SHOVEL* is the official publication of the Lincoln Gem & Mineral Club, Lincoln, Nebraska. Articles and items appearing within may be reproduced in other club bulletins, provided proper credit is given to the *PICK & SHOVEL* and the author and that a reprint of the bulletin is sent to the editor of the *PICK & SHOVEL*.

The purpose of this corporation shall be to study, promote an interest in, and disseminate knowledge of lapidary and various Earth Sciences including but not necessarily limited to geology, paleontology and mineralogy. It shall be a particular purpose of the corporation to provide education in these fields to its members and the general public, especially to youth and student groups.

J. J. & L. ROCKS and MINERALS

COME SEE US FOR YOUR ROUGH NEED'S

GEMS - CABS - SLABS - MOUNTINGS
STERLING SILVER - GOLD FILLED - 14K GOLD
SILVER SUPPLIES - TOOLS - MACHINERY - NEW AND USED
CUSTOM SERVICES FOR SLABS, FLAT LAPPING, AND CABOCHONS

STARTING OUR 30th YEAR

330 LOCUST
HICKMAN, NE 68372-0068

PHONE
402-792-2337

"PROVIDING SUPPLIES FOR THE NOVICE TO THE DISCRIMINATING ROCKHOUND"
Please Call for Appointment

LINCOLN GEM & MINERAL CLUB

hosts our

48th Annual Show
at

PERSHING CENTER
226 Centennial Mall South

*** March 25 - 26, 2006 ***

Show Chairman - Patrick Akins, Jr.

Advertising by rock-hobby business or interest is permitted with the approval of the Board. The rate now set at \$15.00 per full page; \$7.50 per 1/2 page; \$5.00 per 1/3 page; and \$3.75 per 1/4 page (min) per issue, paid in advance. These ads will be placed through the bulletin as space permits.

Subscription to the Pick & Shovel is \$10.00 per year mailed.

Dues to Lincoln Gem & Mineral Club are as follows:

Adults (age 16 and over) \$10 per year Juniors (age 12 to 16) \$2 per year

Family Membership (Couple, resident children under age 16) \$22 per year

New memberships must be approved by the Board, after the applicant attends at least one meeting of the club and pays the above dues plus a \$5 registration fee.

Meetings: Third Thursday, Sept. through May except December & January to be announced. Held at Antelope Park Indoor Shelter, near 30th and Sumner, next to the Veterans Memorial and east of the children's playground.

LINCOLN GEM & MINERAL CLUB, INC. – BOARD OF DIRECTORS
March 1, 2006, Walt Branch Library

President Jim Marburger called the meeting to order at 7:02 p.m. Board members present were Jim Marburger, Pat Akins, Vera Lyman, Jim Atkins, and David Heffelbower, along with guest Ed Ridge.

Pat Akins moved to accept the February minutes as printed, Jim Atkins 2nd. Motion passed by voice vote. The treasurer's report for February was distributed and Jim Atkins moved to accept the report as printed, 2nd by David Heffelbower. Motion passed by voice vote.

OLD BUSINESS: Discussed purchasing DVD/VCR for use with projector. Pat Akins made a motion to spend up to \$100 from the Property Maintenance Fund for the purchase of DVD/VCR. Second by David Heffelbower. Passed on voice vote.

Pat Akins reported that all is going well on the plans for the Show.

NEW BUSINESS: Pfizer will sponsor the annual science fair for school kids at State Fair Park. President Marburger will follow up with Susy McMahan to learn the actual date.

The meeting adjourned at 7:25 p.m. on a motion by Pat Akins, 2nd by David Heffelbower.

A special THANK YOU to Pat Akins for taking notes at this Board meeting, as I was unable to attend due to illness.

Respectfully Submitted,

Sharon Marburger

GENERAL MEETING – March 16, 2006, Antelope Park Shelter

The meeting was called to order at 7:30 p.m. by President Marburger. Twenty-six adult members and one junior were present. One guest, Ben Beardsley, was present.

OLD BUSINESS: The minutes of the February meeting were published in the Pick & Shovel. Charles Wooldridge moved to accept the minutes as printed, Pat Akins 2nd. Motion carried. The February treasurer's report was published in the Pick & Shovel. John Harrison moved to accept the treasurer's report as printed, David Heffelbower 2nd. Motion carried.

Pat Akins reported that everything is on target for the Show. He is now looking for volunteers to help out where needed. He would also like to have a "working equipment" table to show interested persons how the various equipment works.

We received a thank you from Pioneer Nature Center regarding Geology Day. A flyer from Western Colorado Publishing Company announced the publication of a new fossil wood book. This 456 page book is available from the publisher for \$89.95.

NEW BUSINESS: The Board approved the purchase of a DVD/VCR player to go with the newly purchased projector. Both items will be used for Club functions.

The Pfizer Science Fair will be held April 4, with setup at 4:00 p.m., upstairs at Pershing. It will run until 8:00 p.m.

The Grinding Party is scheduled for July 16, 2006 from 1:00 – 4:00 p.m. at the Pioneer Nature Center. Be prepared to bring some hobby-related goodies to share.

The dates for the 2007 Geology Day and Grinding Party have been determined. They will occur on February 11, 2007 and July 15, 2007, respectively.

With no further business from the floor, the meeting adjourned to program on a motion by Charles Wooldridge, 2nd by John Harrison. The program, provided by Pat Akins, was on volcanoes and volcanic activity. Another nice program, Pat.

Respectfully submitted,

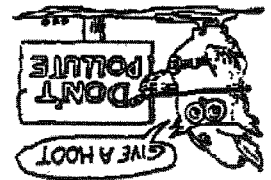
Sharon Marburger



68502+1840-07 0003

Help Eliminate Litter Please

H.E.L.P.



Edward Ridge
2507 A St.
Lincoln, NE 68502

E-Mail Newsletters to: ina@inetrnebr.com

OR

Lincoln, Nebraska 68505-0342
P O Box 5342
Lincoln Gem & Mineral Club

Mail Exchange Newsletters to:



SHOW DATES

April 1-2, 2006

GREEN BAY, WI: The Neville Public Museum Geology Club, Neville Museum, 210 Museum Place, SAT 9:00 am 5:00 pm, SUN 10:00 am – 4:00 pm

April 21-23, 2006

WICHITA, KS: Wichita Gem & Mineral Society, Cessna Activity Center, 2744 George Washington Blvd., FRI 9:00 am – 7:00 pm, SAT 10:00 am– 7:00 pm., SUN 10:00 am–5:00 pm.

April 23, 2006

WATERLOO, IA: Black Hawk Gem, Mineral and Fossil Show, Waterloo Center for the Arts, 225 Commercial St., 12 pm to 5:00 pm

May 6-7, 2006

ROLLA, MO: 11th Annual Swap of the Central Missouri Mineral, Fossil, & Gem Society, Central Missouri Regional Fairgrounds, 12860 S. Highway 63, SAT 9:00 am – 5:00 pm, SUN 10:00 am – 3:00 pm Contact Ray Prater, P.O. Box 1426, Rolla, MO 65402, 573-341-2383, gbryl95@rollanet.org

2006 Federation Shows

California

June 9 -11, 2006
Angel's Camp, CA

Eastern

November 18-19, 2006
West Palm Beach, FL

Midwest

May 19 -21, 2006
Southgate, MI

Rocky Mountain

June 9 -11, 2006
Stillwater, OK

South Central

August - -
Bossier City, LA

Northwest

July 14 -19, 2006
Kelso, WA

Southeast - AFMS

August 14 -20, 2006
Nashville, TN