

THE PICK & SHOVEL

Volume 47 Issue 6 February 2006

Lincoln Gem & Mineral Club - Lincoln Nebraska

General Meetings & Board Meetings

Board Meetings

February 1, 2006 - Walt Library - 7 PM room 2
 March 1, 2006 - Walt Library - 7 PM room 2
 April 5, 2006 - Walt Library - 7 PM room 2
 May 3, 2006 - Gere Library - 7 PM room 2
 September 6, 2006 - Gere Library - 7 PM room 2
 October 4, 2006 - Gere Library - 7 PM room 2
 November 1, 2006 - Gere Library - 7 PM room 2
 December 6, 2006 - Gere Library - 7 PM room 2

General Meetings

All general meetings will be held at the Antelope Park Shelter at 7:30 PM on the third Thursday of the month. December and January are the only exceptions.

February 16, 2006
 March 16, 2006
 Club Show March 25-26, 2006
 April 20, 2006
 May 18, 2006
 June, July, August - Off for the summer
 September 21, 2006
 October 19, 2006
 November 16, 2006
 December 10, 2006 (Sunday)

Programs

February: Pat Akins no title at this time.
 March: Pat Akins, also no title.
 April: Roger Pabian, Thunder Egg I.
 May: Roger Pabian, Thunder Egg II.

Annette Gifford



Photos by Jim Atkins ©2006



Annette Gifford joined our club 2 years ago and is active at our meetings and is a active rock collector. At our January 28th meeting I caught her wearing this neat Morocco Agate necklace. Emily assembled the necklace for her mother from agates Annette brought back from one of her trips. It has to be viewed in color to really appreciate it. Her daughter, Emily Lanik, owns and operates a business called **Eyes of the World** located in the shopping center on 17th and South streets. Emily is a Dealer and will display in our show in March. This is her first year as a dealer with us.

Aerie Artwork



Photos by Jim Atkins ©2006



Dealer from the Annual January Swap 2006. Allen and Tammy Jeanerette are from Nebraska City, Nebraska. Tammy has been painting for 30 years. The last ten years Tammy has been using Rocks as her canvas. This last year Allen has started cutting and polishing Botswana Agate and Tampa Bay Coral. Allen and Tammy will be exhibiting at the Kansas City Gem Show in March.

Aerie Artwork 7287 N. Road Nebraska City, Nebraska 68419
 Phone 402-873-6515

President's Message



Jim Marburger

We had a wonderful INDOOR Swap with a good-as-gold rain. Our guests seemed to have a lot of fun bidding on the silent auction and dealing with the swappers. THANKS to all who took part in the swap. After the swap, we celebrated the Club's 51st anniversary and welcomed our eight new members.

Our show is coming like a freight train and will be past in a blink of a eye. Please be thinking of your display for the show. We all need to make ourselves available to Pat and his crew for the show. This show must be a success so we can continue to make it profitable for our dealer guests. Without them, it would be difficult to even consider a show. This is your show and your display is a valuable asset.

Another upcoming event is the Science Fair on Tuesday, April 4. More details later.

Geology Day at Pioneer Park is coming up and I would like to see lots of you there. This is a great opportunity to inform people of our show in March who might not otherwise know about it. A strong showing here might create excitement for the show. Many cub and boy scouts troops have visited us in the past – another good opportunity to share your hobby with them and build our youth segment.

My back is doing better. I am getting charged up for the spring shows and looking forward to a fun Presidential Field Trip.

See you at Geology Day and at our next Club meeting. Rock on!

New Members

New members for the Lincoln Gem & Mineral Club are:

Kenneth & Sharon Jenson
Children: Laura & Eric

Welcome to the club. We hope you have fun and enjoy it as much as we do.

Geology Day

Geology Day at Pioneer Park is going to be Sunday February 12, 2006. The time is from 1 PM to 4 PM. This event is usually well attended and we would encourage new members to come out and set up a display or help out.



Congratulations

Congratulations go out to Connie and Mary McCartney on their 50th wedding anniversary. January 29, 2006.



Dinosaurs & Disasters

Spend a day with scientists.....

- Bring fossils & rocks for identification
- Learn about tornados, earthquakes & volcanoes
- Discover even more about fossils!

Saturday, February 18, 2006 9:30 am - 4:30 pm
University of Nebraska State Museum
Morrill Hall 14th & Vine Streets
www.museum.unl.edu (402)472-2642 Admission

SHOW DATES

Feb 13, 2006

PARK FOREST, IL, Silent Auction, South Suburban Earth Science Club, Freedom Hall, 410 Lakewood Blvd, Sun 1:00-4:30, Contact: Helen Funk, 174 Westwood, Park Forest, IL 60466, (708) 747-3566, sses-cus@yahoo.com

Mar 11, 2006

Chicago, IL, Chicago Rocks and Minerals Silent Auction, March 11, location 4056 N Pulaski Ave, Salvation Army - Irving Park Corps, Chicago, IL. Time 5:30pm to 10pm. For information contact Ron Gutkowski at 773-775-9549

Mar 11-12, 2006

MACOMB, IL, 26th Annual Show, Geodeland Earth Science Society, WIU Student Union, Murray St, Sat 10:00-6:00, Sun 10:00-5:00, Contact: Dean Stone, 900 Willard St, Galesburg, IL 61401, (309) 342-7132, stonerocks@hotmail.com

Mar 10-12, 2006

Kansas City Gem & Mineral Show, KCI Expo Center, 11730 N. Ambassador Drive, KCMO 64195 Exit 112th St. off 1-29 or exit KCI Airport off 1-435
9 AM—9PM Fri 9 AM—7 PM Sat 10 AM—5 Pm Sun

Mar 25-26, 2006

LINCOLN, NE, 48th Annual Show, Lincoln Gem & Mineral Club, Pershing Ctr, 226 Centennial Mall S, Sat 9:00-6:00, Sun 10:00-5:00, Contact Pat Akins, Jr, 5017 NW 6th St, Lincoln, NE 68521, (402) 477-1322

May 6-7, 2006

ROLLA, MO, 11th Annual Swap, Central MO Mineral, Fossil, & Gem Society, Central Missouri Regional Fairgrounds, 12860 S Hwy 63, Sat 9:00-5:00, Sun 10:00-3:00, Contact Ray Prater, PO Box 1426, Rolla, MO 65402, (573) 341-2383, gbryl95@rollanet.org

April 1-2, 2006

Green Bay Wis The Neville Public Museum Geology Club hosts a rock, gem, and mineral show April 1st. 9 a. m. to 5 p.m. and April 2nd. 10 a.m. to 4 p.m. at the Neville Museum in Green Bay Wis. 12 dealers and many exhibits.

2006 Federation Shows

California

June 9 - 11, 2006
Angel's Camp, CA

Eastern

November 18-19, 2006
West Palm Beach, FL

Midwest

May 19 - 21, 2006
Southgate, MI

Rocky Mountain

June 9 - 11, 2006
Stillwater, OK

South Central

August - -
Bossier City, LA

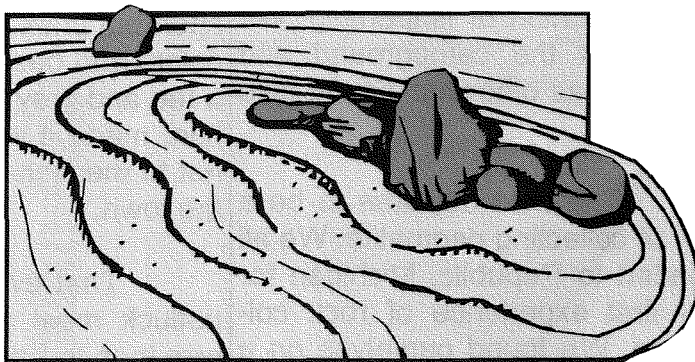
Northwest

July 14 - 19, 2006
Kelso, WA

Southeast - AFMS

August 14 - 20, 2006
Nashville, TN

A.F.M.S. Newsletter - December, 2005 - January, 2006



Roving Rockhounds

For those of you who were not able to join us last summer, we visited Bancroft, Ontario, the Upper Peninsula of Michigan, and Thunder Bay, Ontario. Here are some stories shared by a new member about collecting in the UP. Submitted by Roger Pittard

Rock Collecting & Deer Hunting in the UP

By Steven Glass

My wife, Virginia and I joined our first official Roving Rockhound field trip last summer. We were fortunate enough to travel to the UP (Upper Peninsula, Michigan) to gather a variety of rocks. We had our little Scamp, a 1 6-foot trailer in tow and we crossed the Mighty Mackinaw Bridge after several hours of driving from the Flint area. After crossing the bridge, we headed west towards our destination of Ishpeming. We arrived at the campground and settled in as other rockbound also arrived.

The next day was to be a day of collecting pegmatite. We all headed to Republic, Michigan for our first experience of rock collecting. We found ourselves on a seldom used road and the rocks

were in a tall, waist high, grassy area. The old timers, Roger, Russ and Bill R (I mean experienced) went quickly in to action, while I played at trying to look official. I finally found my way to the gathering site only to be greeted by the sound of sledge hammers smashing into very large specimens of pegmatite. I quickly learned that my little hammer was no match for this kind of collecting. Fortunately, this group is extremely gracious in making sure everyone gets good samples of the rocks being collected. Because of this generosity, we ended up with a 100-pound rock that took four men to lift into our vehicle. The biggest danger, other than a hernia, turned out to be the bees that resided near the collecting area. Unfortunately, Bill Ruddock was stung on the lip and talked with a lisp the rest of the day.

We then visited the Republic Mine site. They have a viewing platform along with information about the mine and the town around it. Then it was on to Champion to collect Magnetite and Specular Hematite from an old mine dump.

Before heading back to camp, we climbed Jasper Knob, which is a rounded hill of glacially polished jaspilite. It involved a short but brisk hike to the top. The colors and designs of the jaspilite, a red and gray banded iron formation, made it well worth the effort not to mention the view back over the town.

That evening we shared a potluck meal and a campfire. It was then to bed to get up early for the next day of collecting. The

next day's collection was the main reason that we came for. We were going to the Slate River.

This day was one of my favorites of the trip. This was the day I actually got to use the four-wheel option on our new Ford Explorer. Not only were parts of the trail rough, but I had to go through hub deep mud puddles. To some this might not seem like much, but we had owned our Explorer for only three days!! Also, the collecting was my kind of collecting. We had a nice walk to the collecting site and were greeted by huge piles of slate. I absolutely could not make a mistake. All I had to do was sit down and start collecting. The hardest part was deciding how big of pieces to keep. We had hoped to get maybe four nice samples to put behind our house. With the help of Bill and Russ we ended up with enough to do a small patio. They are experts in rock packing. The other thing about this site was the sound of the slate as people walked and dug through it. It was very soothing to have a musical treat supplied by Mother Nature.

Next we found ourselves on the shores of Lake Superior to collect wave worn Jacobsville sandstone. The view looking out on the lake was an additional bonus to rock collecting. The nearby town had many beautiful homes and businesses adorned with the beautiful sandstone.

Continued on next page.....



Continued from previous page.....

Another highlight was being able to collect at the Caledonia Mine (1863) which is near Ontonagon. This is the only active copper mine in Michigan. As we stood outside the entrance of the mine, it had the appearance of a scene from a horror movie. The temperature outside was in the nineties and the mine temperature was in the fifties causing a thick swirling fog to come rushing out of the adit. The mine was under going an inspection when we arrived, so our tour was put on hold until the inspection was completed. While we waited, we were able to collect on the waste piles looking for copper and datolite. We had some luck and did find some, but the heat of the day soon drove us back under the nice roofed picnic area, which is near the mine entrance. The air rushing out of the mine was very refreshing and cooled us down nicely. The inspection was taking longer than expected so we walked to another mine site to do some collecting on an old adit wall. This turned out to be really special. We were able to get a few wedges of fairly large copper samples. It took a bit of work with

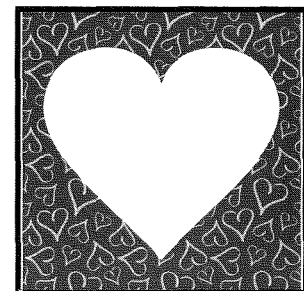
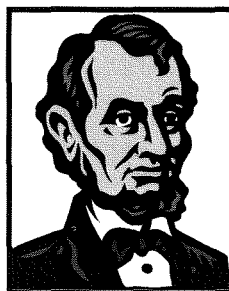
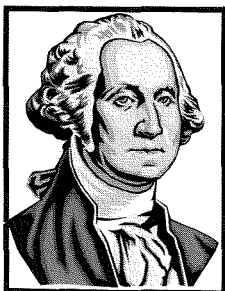
chisels and hammers but, the results were great copper samples. Also, once again Mother Nature provided a musical interlude. As the vein of copper was being hammered, it would make a resonant gong sound as it reverberated through the rock and copper.

Finally it was time to enter the mine. The owner, Rich White-man, gave us a safety course and then we suited up. We had hard hats with lights connected to a battery pack carried on a belt around our waist. We also had a breathing apparatus in case there was an accident and the air went bad. We gathered around the entrance, paired up with a partner, then walked through the fog into a dark and slightly dank environment. As we walked towards our collecting area, Richard gave us a geology lesson about the mine and the mining process. We arrived at the collecting area, which is called a stope. To get to it we had to climb a ladder about fifteen feet tall. Upon exiting the ladder we were in what looked like a cave area with lots of broken rock that sloped uphill. We all spread out and began to search through the rocks looking for the elusive copper. It was kind of difficult because of the lighting being limited

to our helmet light. I would recommend taking a flashlight. All too soon our collecting time was over and we made our way back down the ladder and retraced our way out. As I was walking out I thought about my relatives from Wales and Indiana that worked in the coal mines. It was neat to experience a little bit of what it might have been like. After leaving the mine and letting our eyes readjust we returned our equipment and compared what we had collected. Then we returned to the campground. We recalled our adventures around the campfire and enjoyed Roger's musical talent.

For me these were the best collecting sites of the trip. However, we collected at many other spots including an active quarry for Kona Dolomite and an old mine dump for copper.

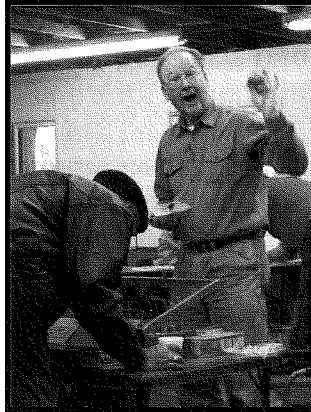
You may have been wondering about the deer hunting on this trip. Three out of the four vehicles hit deer within a three-day period. Bill got a doe, Russ a fawn, but Roger got the BIG buck—which also cost him big bucks. We were the only ones to not bag a deer.



January Annual Rock Swap 2006



Jim Marburger ©2006



Jim Marburger ©2006

"A satisfied customer"



Jim Marburger ©2006



Jim Marburger ©2006

The photos are from the Annual Rock Swap held in January 2006 by the Lincoln Gem & Mineral Club.

WE had a full house. Considering the weather we had collectors from all over the State. The day started out as gray and overcast but warm. Temperatures were in the 50's and in the afternoon we had a thunderstorm with heavy rain. The sprits and fun were not dampened. A good time was had by all.



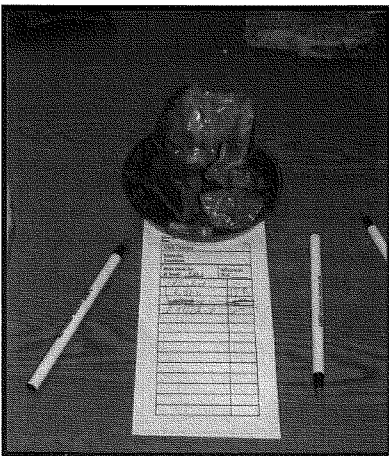
Jim Marburger ©2006



Jim Atkins



Jim Atkins ©2006



Jim Atkins ©2006



Jim Atkins ©2006

Silent auction winners showing off their winnings.



Jim Atkins ©2006

2006 ELECTED OFFICERS

President	James Marburger	332 Locust	Hickman, NE	68372	402	792-2348
1 st Vice Pres.	Pat Akins, Jr.	5017 N. 6 th St.	Lincoln, NE	68521		477-1322
2 nd Vice Pres.	Roger Pittard	1013 Road K	Geneva, NE	68361	402	759-4623
Treasurer	Vera Lyman	420 N. 56th St.	Lincoln, NE	68504		464-6089
Secretary	Sharon Marburger	332 Locust	Hickman, NE	68372	402	792-2348
Board Member	James Atkins	3028 S. 35th St.	Lincoln, NE	68506		483-1610
Board Member	John Harrison	330 Locust	Hickman, NE	68372	402	792-2337
Board Member	David Heffelbower	1431 D St.	Lincoln, NE	68502	Cell	890-2794
Board Member	Charles Wooldridge	6115 Huntington St.	Lincoln, NE	68507		325-8849

Nominating Committee

3 years	Vera Lyman
	Edward Ridge
2 years	John Harrison
	Aulden Stewart
1 year	Mary Pittard
	Phyllis Parks

Chairman: Immediate Past-President Susan McMahan

Long-Range Planning & By-Laws Committee

3 years	Charles Wooldridge
	Phyllis Parks
2 years	Susan Taylor
	Edward Ridge
1 year	Vera M. Lyman
	Roger K. Pabian

Standing Committees

Education / Librarian:	Roger Pabian	MWF Liaison:	Vera Lyman
Field Trips:	Pat Akins, Coordinator	Scholarship:	Vera Lyman
Historian:	Sharon Marburger	Christmas Party:	Edward Ridge
Membership Record:	Edward Ridge	2007 Show:	Jim Marburger
Programs:	David Heffelbower	2006 Show:	Patrick Akins, Jr.
Property:	Pat Akins, Jr. & James Marburger	2007 Swap:	Roger Pabian
Refreshments/Door Prizes:	Judy Reilly	2006 Swap:	Dave Heffelbower
Youth Activities:	Kay Jurgens, Judy Reilly, Vera Lyman, Susy McMahan		
Housing Committee:	Susy McMahan, Pat Akins, Charles Wooldridge & Vera Lyman		
Auditing Committee:	John Harrison, Roger Pabian & James Marburger		
Geology Day Coordinator:	2nd Vice President		

L. G. M. C. web address—courtesy of Jim Atkins:

<http://incolnetnebr.com/jna/gemclub/lgmc.htm>

Your PICK & SHOVEL Staff

Publisher:	Lincoln Gem & Mineral Club, Inc., P.O. Box 5342, Lincoln, NE 68505-0342
Editor:	James N. Atkins 483-1610
	3028 So. 35 th Street, Lincoln, NE 68506
	E-mail: jna@inetnebr.com
Circulation:	Phyllis N. Parks 476-6798
Business Reporter:	Vera Lyman 464-6089
News Reporters:	All Club Members

The *PICK & SHOVEL* is the official publication of the Lincoln Gem & Mineral Club, Lincoln, Nebraska. Articles and items appearing within may be reproduced in other club bulletins, provided proper credit is given to the *PICK & SHOVEL* and the author and that a reprint of the bulletin is sent to the editor of the *PICK & SHOVEL*.

The purpose of this corporation shall be to study, promote an interest in, and disseminate knowledge of lapidary and various Earth Sciences including but not necessarily limited to geology, paleontology and mineralogy. It shall be a particular purpose of the corporation to provide education in these fields to its members and the general public, especially to youth and student groups.

J. J. & L. ROCKS and MINERALS

COME SEE US FOR YOUR ROUGH NEED'S

GEMS - CABS - SLABS - MOUNTINGS
STERLING SILVER - GOLD FILLED - 14K GOLD
SILVER SUPPLIES - TOOLS - MACHINERY - NEW AND USED
CUSTOM SERVICES FOR SLABS, FLAT LAPPING, AND CABOCHONS

STARTING OUR 30th YEAR

330 LOCUST
HICKMAN, NE 68372-0068

PHONE
402-792-2337

"PROVIDING SUPPLIES FOR THE NOVICE TO THE DISCRIMINATING ROCKHOUND"
Please Call for Appointment

LINCOLN GEM & MINERAL CLUB hosts our

48th Annual Show
at

PERSHING CENTER
226 Centennial Mall South

*** March 25 - 26, 2006 ***

Show Chairman - Patrick Akins, Jr.

Advertising by rock-hobby business or interest is permitted with the approval of the Board. The rate now set at \$15.00 per full page; \$7.50 per 1/2 page; \$5.00 per 1/3 page; and \$3.75 per 1/4 page (min) per issue, paid in advance. These ads will be placed through the bulletin as space permits.

Subscription to the Pick & Shovel is \$10.00 per year mailed.

Dues to Lincoln Gem & Mineral Club are as follows:

Adults (age 16 and over)	\$10 per year	Juniors (age 12 to 16)	\$2 per year
Family Membership (Couple, resident children under age 16)	\$22 per year		

New memberships must be approved by the Board, after the applicant attends at least one meeting of the club and pays the above dues plus a \$5 registration fee.

Meetings: Third Thursday, Sept. through May except December & January to be announced. Held at Antelope Park Indoor Shelter, near 30th and Sumner, next to the Veterans Memorial and east of the children's playground.

GENERAL MEETING – January 28, 2006, Antelope Park Shelter

The meeting was called to order at 7:30 p.m. by President Marburger, following a successful day of rock swapping and pizza supper. Thirty-four adult members, one junior, and one guest, Jayne Beers, were present. A special welcome to new members, Sharon and Kenneth Jensen, Barry and Delores Rose, Ed and Donna Anderson, and Connie and Mary McCartney.

A special announcement was made. Connie and Mary McCartney are celebrating their 50th wedding anniversary on Sunday, January 29. Congratulations to Connie and Mary. Wendell Wells, a new member in 2005, passed away in November. Our sympathies to his widow, Betty.

OLD BUSINESS: The minutes of the November and December meetings were published in the Pick & Shovel. Phyllis Parks moved to accept the minutes of the November meeting as printed, Roger Pittard 2nd. Motion carried. Shirley Rockel moved to accept the December minutes as printed, Pat Akins 2nd. Motion carried.

The November and December treasurer's reports were published in the Pick & Shovel. Phyllis Parks moved to accept the November treasurer's

report as printed, 2nd by Pat Akins; motion carried. Shirley Rockel moved to accept the December treasurer's report as printed, second by Mary Pittard. Motion carried.

Pat Akins reported that we have a full slate of dealers for the 2006 Show. Several demonstrators have been lined up, but will take suggestions for more. Pat has obtained a corporate sponsor to assist with advertising, and has arranged for two radio stations to provide live on-site broadcasts with 60 advertising slots. Plans for special exhibits that will be of interest to kids; Omaha youth group will bring equipment to demonstrate and allow visiting youth to polish a horn coral to keep. The corporate sponsor may provide a special program. Pat plans to rent a big screen TV in order to show continuous videos of various aspects of the hobby. Geology Club from the university is also invited.

A special thanks to Judy Reilly for the past four years as editor of the Pick & Shovel. Jim Atkins has agreed to take on that responsibility now.

Reminder that the general meeting nights are now on the third Thursday of the month. Geology Day is 1:00 to 4:00, Febru-

ary 12 at Pioneer Park Nature Center. Please plan to participate by providing a small display case.

Roger Pabian draws our attention to the Pick & Shovel, asking that we provide copies of the missing issues of Rock & Gem magazine. Be sure to watch future publications of the Pick & Shovel for other magazine sets.

NEW BUSINESS: President Marburger is not sure yet where the President's Field Trip will be. We may share the trip with the Denver Guild again this year. Stay tuned for further information!

Roger Pabian volunteered to oversee the 2007 January Swap. Thank you, Roger.

The meeting adjourned to program at 8:01 p.m. on a motion by Charles Wooldridge, 2nd by John Harrison. The program was provided by David Heffelbower on the subject of "Advanced Cutting and Polishing". Thanks for the program, Dave.

Respectfully submitted,
Sharon Marburger

LINCOLN GEM & MINERAL CLUB, INC.

President Jim Marburger called the meeting to order at 7:00 p.m. Board members present were Jim Marburger, Pat Akins, Roger Pittard, Sharon Marburger, Vera Lyman, John Harrison, Jim Atkins, and David Heffelbower, along with guest Ed Ridge.

The minutes of the December meeting were distributed. Pat Akins moved to accept the minutes as printed, John Harrison 2nd. Motion carried. The treasurer's report for December was handed out and Pat Akins moved to accept the report as printed, 2nd by Jim Atkins. Motion carried.

OLD BUSINESS: David Heffelbower reported that the January Swap is all lined up, but we will need donations for the silent auction.

Pat Akins reported that all the dealers have been lined up for the 2006 Show. Five selling demonstrators are lined up, but is looking for three

more. He is looking into finding a corporate sponsor to help with advertising costs, trying to line up live radio broadcasts, looking into having larger newspaper ads, extending special invitations to the University and to other clubs for them to have booths. Discussed the possibility of exchanging mailing lists with the Omaha club in order to increase public notification. Asking Charles Wooldridge to provide a merit badge segment in order to attract scouting groups. Sounds like Pat has things well in hand.

Geology Day is scheduled for February 12 at the Nature Center at Pioneer Park. Jim Marburger offered to stand in for Roger Pittard since Roger will be out of town.

NEW BUSINESS: Jim Marburger has volunteered to be the 2007 Show chairman.

New members Connie and Mary McCartney, from the defunct Grand Island club, are sponsored by John Harrison. Ed and Donna Anderson,

also from Grand Island, are sponsored by Leah Anderson.

John Harrison made a motion to accept members in good standing from other clubs, both active and dissolved clubs, and that the meeting attendance requirement be waived. David Heffelbower 2nd the motion, motion carried.

The Pick & Shovel has a new editor, Jim Atkins. Thanks to Judy Reilly for the past four years, and thanks to Jim for taking on this job.

The Board discussed the possibility of having club vests or pins, or some other type of promotional item. This will be discussed further.

The meeting adjourned at 7:57 p.m. on a motion by John Harrison, 2nd by Pat Akins.

Respectfully Submitted,
Sharon Marburger

LGMC Treasurer's Report for January 2006

Pinnacle Checking Balance Dec. 31, 2005
Receipts:

\$ 6,459.73

Member Dues/Registrations	351.00	
Gem Palette subscriptions/members(susp)	35.00	
One 50th Anniv. pin sale	2.50	
Pizza Supper (suspense)	140.71	
8 New Memb Name badges(GI) (suspense)	76.61	
Donation-SLCEF	.85	
Sandwich Sales-Noon @ Swap	6.00	
Silent Auctions (SLCEF)	87.50	
Swap Change Return (suspense)	800.00	
10% Receipts on Swap Bucks	85.20	
JJ&L Rocks & Minerals-2005 P&S Ad	45.00	
2 Subscriptions for P&S	<u>20.00</u>	1,650.37

Payments:

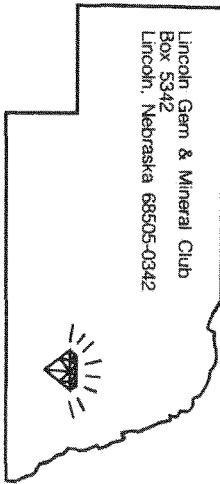
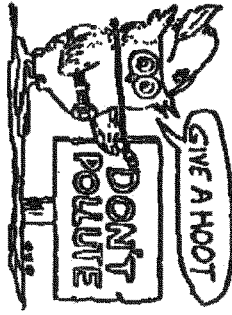
City Parks & Rec Dept. (Feb-Dec Mtgs)	600.00	
Postmaster-Jan/Feb P&S(78)Treas(7.80)	85.80	
NE Dept of Rev-Sales Tax 2005 Show	344.66	
MWF - 2006 Membership Dues	145.50	
Friends O Museum - 2006 Dues	70.00	
NAOESCI - 2006 Membership Dues	71.00	
Pershing Center-Balance Dep/Show site	700.00	
Judy Reilly-2005 Dec P&S copy	74.83	
Phyllis Parks-2006 Jan P&S Covers	13.38	
Rixstine's Trophy-8 name badges(susp)	76.61	
Postmaster-Added postage/Jan P&S	24.50	
Pinnacle Bank-Safety Deposit Box Rent	23.00	
Pinnacle/Cash-Swap change (suspense)	800.00	
Super Saver-Ann Cake,Supplies/Lunch	62.96	
Valentino's - Supper Pizza (suspense)	140.71	
City Parks ~ Rec--% on Swap/Auction	3.45	
The bartford - Officers Bond Ins.	<u>151.00</u>	3,387.4G

Pinnacle Checking Balance January 31, 2006

\$4,722.70

Help Eliminate Litter Please

H.E.L.P.



Lincoln Gem and Mineral Club

Proudly presents our

48th Annual Show

"On The Rocks"

March 25-26, 2006

Saturday 9:00 AM - 6:00 PM, Sunday 10:00 AM - 5:00 PM

Pershing Center

226 Centennial Mall South

Lincoln, Nebraska

Mineral Specimens, Cut and Polished Rocks, Meteorites, Fossils, Bead and Gemstone Jewelry of all Styles and

MUCH MORE!

Enjoy a fun educational day with friends and family learning about the wonders of the natural world.

Featuring: 14 Dealers, Working Demonstrations, Information Booth, Youth Activities all day Saturday and Sunday, Free Programs, Door Prizes.

Admission - \$5.00/Adult, \$3.00/Student.

Under 5 FREE with Adult admission.

Concessions available on site.

Edward Ridge
2507 A St.
Lincoln, NE 68502

