

THE PICK & SHOVEL

Lincoln Gem & Mineral Club - Lincoln Nebraska

General Meetings & Board Meetings

Board Meetings

February 1, 2006 - Walt Library - 7 PM room 2
March 1, 2006 - Walt Library - 7 PM room 2
April 5, 2006 - Walt Library - 7 PM room 2
May 3, 2006 - Gere Library - 7 PM room 2
September 6, 2006 - Gere Library - 7 PM room 2
October 4, 2006 - Gere Library - 7 PM room 2
November 1, 2006 - Gere Library - 7 PM room 2
December 6, 2006 - Gere Library - 7 PM room 2

General Meetings

All general meetings will be held at the Antelope Park Shelter at 7:30 PM on the third Thursday of the month. December and January are the only exceptions.

January 19, 2006
February 16, 2006
March 16, 2006
Club Show March 25-26, 2006
April 20, 2006
May 18, 2006
June, July, August - Off for the summer
September 21, 2006
October 19, 2006
November 16, 2006
December 10, 2006 (Sunday)

Programs

January: Advanced cutting, Dave Heffelbower
February: Pat Akins no title at this time.
March: Pat Akins, also no title.
April: Roger Pabian, Thunder Egg I.
May: Roger Pabian, Thunder Egg II.

Annual January Rock Swap

The Lincoln Gem and Mineral Club is hosting its 28th Annual Gem & Mineral Swap at the Antelope Park Shelter on Saturday, January 28, 2006 from 1:00 p.m. – 5:00 p.m., with the general meeting following at 7:30 p.m.

Come and enjoy an afternoon of swapping and trading your minerals, gems, jewelry, fossils, findings, equipment, and other hobby-related items.

Purchase your Swapper Dollars at the door; no cash transactions allowed. There is a ten percent surcharge on

Swapper Dollars, with the proceeds going to the Lapidary Education Fund. Materials offered for swap or trade are restricted to hobby-related items.

There will be Silent Auctions throughout the afternoon.

Join us for a fun afternoon and evening!

Free admission and everyone is welcome.

DUES are DUE

Membership dues are being collected at this time. The deadline is January 31, 2006. After that date there will be a \$5.00 late fee. The costs are: Adults (16 and up) \$10 per year; Juniors (12 - 16) \$2 per year; Family membership (Couple, resident children under 16) \$22 per year. Payments can be made at the next meeting or checks can be sent to:

Lincoln Gem & Mineral Club, Inc.
P. O. Box 5342
Lincoln, Nebraska 68505-0342



President's Message



Jim Marburger

WOW!! What a November and December. Sharon and I had ten days in California visiting our kids and 6 grand-kids. We stopped in Phoenix on the way home for the holiday party for Sharon's work. After we returned home, I had another trip that was not planned. Yes, a nasty trip when I was helping set up for the December Board meeting. To make a long

story short, I have a compression fracture of the L2 vertebrae. I have been at home since, with another 4 to 8 weeks of limited work. This made for a frustrating end of the year, but what a great way to start 2006 on the upswing.

Please take the time and make an effort to help with the Swap this month. We want to have a good showing at this event. Notices have been sent to the media and Dave will need items for the silent auction. Lets have a great time together.

I would like to see more club member take part in Geology Day at the Nature Center in February. We have great core members who always participate. This would be a great time to have a trial run for your display case before the show in March.

With about two months before our show, please make yourself available to help with this venture. Pat Akins will accept all help offered. Plan your display now.

Please note that the meeting nights have been changed. I hope this will help everyone to know when the meetings are. Perhaps we will have more than 20 members show up to meetings. Remember this is your club, and you help to make it. Lets just DO IT!!!!!!!!!!!!!!

Rock on

Jim Marburger

New Members

New members for the Lincoln Gem & Mineral Club are:

Barry & Dolores Rose

Ed & Donna Anderson

Connie & Mary McCartney

Welcome to the club. We hope you have fun and enjoy it as much as we do.

Geology Day

Geology Day at Pioneer Park is going to be Sunday February 12, 2006. The time is from 1 PM to 4 PM. This event is usually well attended and we would encourage new members to come out and set up a display or help out.



Editors Note:

I want to thank Judy Reilly for her hard work on doing the Pick & Shovel for the last five years. I hope I can do as well. She is a tough act to follow. Please feel free to send or give me information, articles or tell me what you would like to see in the newsletter. I will see you at the Swap.

Jim Atkins - New Editor

Rock and Gem Magazines

In an attempt to build complete collections of serial publications (Lapidary Journal, Rock & Gem, etc.) for the club library, the spread sheet lists the copies we have (x) and the ones we need (no mark). If you have complete copies of any of these missing issues and would like to donate them to the club library, please bring them to the January swap. Please bring only complete copies (no missing pages, pictures, clipped coupons, etc.) to the January Swap. Thank you. Roger K. Pabian, Club Librarian

	January	February	March	April	May	June	July	August	September	October	November	December
1971			v.1, no. 1	x	x		x		x		x	
Rock & Gem was published as a bi-monthly in 1971, its' first year.												
1972	x	x	x	x	x	x	x	x	x	x	x	x
1973	x	x	x		x	x	x	x	x	x	x	x
1974	x	x	x	x	x	x	x		x		x	x
1975	x	x	x	x	x	x	x	x		x		x
1976					x		x		x	x	x	x
1977	x	x	x	x		x	x	x	x	x		x
1978	x	x	x	x	x	x	x	x	x	x	x	x
1979	x		x	x	x	x	x	x	x	x	x	x
1980	x	x		x	x	x			x	x		x
1981		x	x	x	x	x		x				x
1982				x	x						x	
1983	x											
1984												
1985							x					
1986							x	x	x	x		x
1987	x	x	x	x	x	x	x	x	x	x	x	x
1988	x	x	x	x	x	x	x	x	x	x	x	x
1989	x	x	x	x	x	x	x	x	x	x	x	x
1990			x		x	x						
1991	x						x					
1992	x		x									
1993			x			x	x	x	x	x	x	x
1994	x	x	x	x								
1995						x	x		x	x		x
1996			x	x	x	x		x		x		
1997	x	x	x	x	x	x	x	x	x	x	x	x
1998	x	x	x	x	x	x	x	x	x	x	x	x
1999	x	x	x	x	x	x	x	x	x	x	x	x
2000	x	x	x	x	x	x	x	x	x	x	x	x
2001	x	x	x	x	x	x	x	x	x	x	x	x
2002	x	x	x	x	x	x	x	x	x	x	x	
2003	x	x	x	x								
2004												



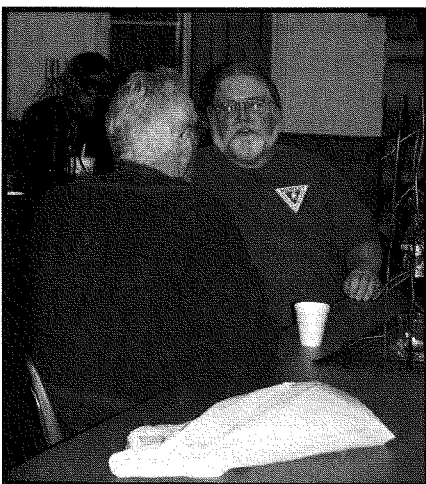
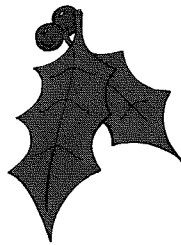
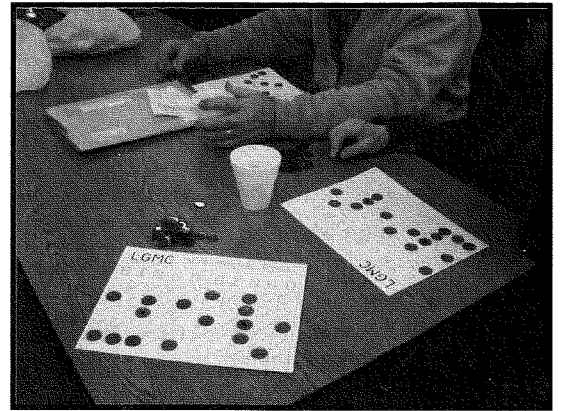
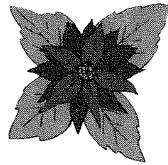
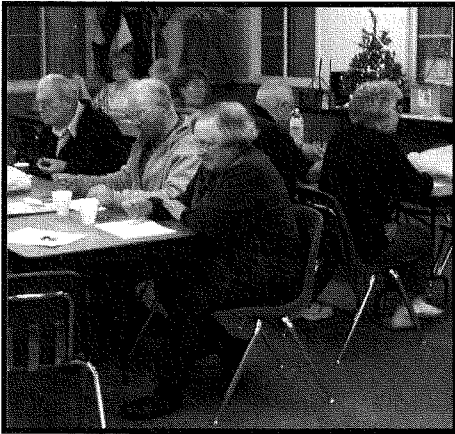
EARLY FISH WORMED ITS WAY INTO NEW LOCOMOTION

Recent evidence has turned an old idea on its head. Scientists always believed that prehistoric fish first started dragging their way onto land around 300 millions ago by wagging their bodies from side to side, fish-like, while slithering their bellies along the ground. Reanalysis of fossil skeletons from these test pilots for terrestrial locomotion suggests that the creatures had enough strength in their primordial limbs to hold their bodies off the ground. This means that early fish probably pulled themselves forward like giant inchworm, extending and contracting their two-foot long bodies.

The first fish to make a stab at living on land was the long-extinct *ichthyostega* which made its home in Eastern Greenland. The animal probably pulled itself forward with its appendages and followed up with a catch-up move from the rear. Eventually scientists hypothesize, it may have managed a primordial walking gait, with diagonally synchronized limb movements. Whatever it did, it worked for a while, but after its 15 minutes of fame as the world's first documented four-legged creature, *ichthyostega* disappeared.

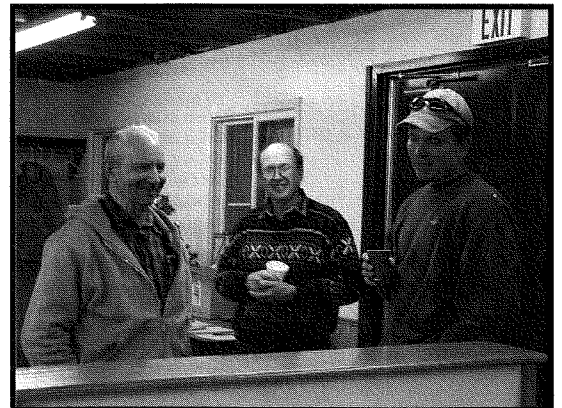
(Summary of Milwaukee Journal-Sentinel article from Mouday, September 12, 2005
By Margaret Pearson)

CHRISTMAS PARTY-2005

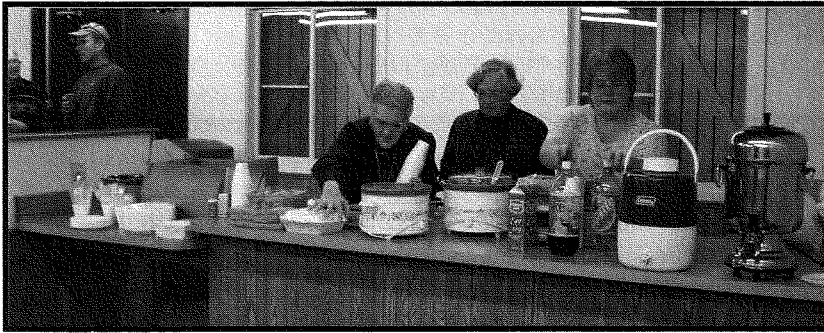


The Lincoln Gem & Mineral Club's Christmas Party was held on Sunday , December 11, 2005. Meats and beverages were provided by the club. The members provided hot dishes, salads and desserts that were delicious. A festive atmosphere was created by beautiful decorations provided by Ed Ridge. Thank you Ed.

Rock Bingo was played after the meal along with plenty of conversation.



CHRISTMAS PARTY-2005



Getting set-up



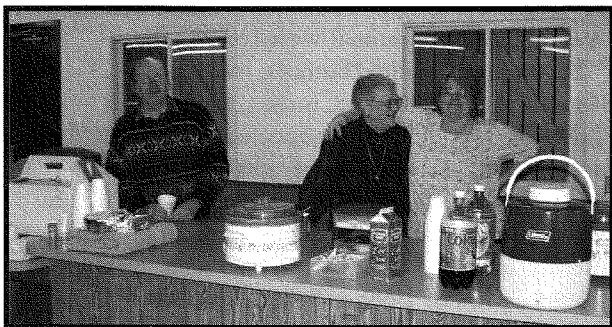
Before



Waiting in line to eat



After



Friends

Enjoying good food and good company.

Photos by Jim Atkins ©2005





FOSSIKING ON FOSSILS

by Cecilia Duluk, MWF Paleontology

“But ‘WYE’ are there ‘BLOBS’ in the MAZON CREEK fauna?”

During the last hundred years of fossil collecting, the shale deposits of Will and Grundy Counties in Illinois have become world-famous for producing imprints of strange creatures, some otherwise unknown from anywhere else. These Pennsylvanian Period (or “Coal Age”) deposits (known in Europe as the Upper Carboniferous), produce concretions which, when split, often have imprints of fossil life in them. Originally collected as “pebble-like concretions in the banks of Mazon Creek” [a., pp.6-7] by serious amateurs like George Langford, and joined in the 1940s by interested professionals such as Dr. Eugene S. Richardson, Jr. of the Chicago Field Museum, most of the fossil nodules were of coal-age plants, with a smattering of animal forms indicative of a brackish-water swamp.

Variably known as the “Braidwood material,” the “Wilmington Coal Flora & Fauna” [b.], and the “Mazon Creek fossils,” the thousands of specimens were generally relegated to being from another of the seemingly unlimited world-wide occurrences of Upper Carboniferous plants associated with coal deposits. From the 1940s on, a majority of the specimens stratigraphically designated as being from the Francis Creek Shale Member of the Carbondale Formation were coming from the shale/claystone layers dumped on spoil heaps by the strip mining of coal.

Then the Peabody Coal Company opened **Pit 11**, an extensive mining area about two miles south of Braidwood, near a “dot on the map” called West Essex, Illinois. There, the preponderance of fossils in the concretions were animals—not just clams, spiders, and ancestors of the horseshoe crab, but somewhat three-dimensional imprints of delicate invertebrates like shrimp, spiders, and winged insects—AND, of course, the now-famous animal known as *Tullimonstrum*. The general consensus came to be that there were “three distinct zones [in the Mazon Creek biota, with the Essex material representing] a near-shore, salt-water ocean area and its inhabitants. [c., p.2]

During those years when the spoil heaps of Pit 11 were generally open to collectors, MANY, many specimens came to the attention of Dr. Gene and his cohorts at the Field that did not even vaguely resemble anything hitherto known as a fossil form. Dr. Gene first called them all his “little beasties,” and collectors gave them nicknames such as “winged seeds” (eventually designated *Cyclus*, and considered an arthropod), “ghosts” and/or “blades” (still being studied as possible

larval forms of chordates) [d.], “wyes” (so called because they looked like the letter “Y”)—and, of course, “blobs.”

Originally dismissed as “growths formed by minerals such as pyrite or sphalerite” [e., p. 204], or as parts of the decayed remains of other organisms, the preponderance of “blobs” with form and color similar to many other “beasties” found in the Essex fauna made both professionals and amateurs conclude that these were indeed **fossils** of some kind of invertebrate animal. True, there were some differences in specific characteristics from “blob” to “blob,” but the general oval or elliptical outline showing a distinct upper and lower “body” character, the convex versus concave thickness in the positive versus negative imprints in the two halves of the concretion, and the consistently lighter color of the “blob” than its surrounding matrix, all pointed to the organic origin of these strange forms.

Collectors in the '60s not willing to wait for official

scientific descriptions of the “blobs,” often did their own analysis. Mazon field tripper *par excellence*, Terry Wolff, designated the differences as being “Blobs with character” [fig. 1] and

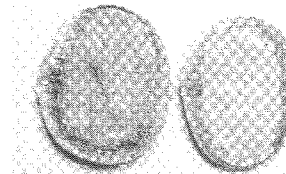


Fig. 1

“ordinary Blobs” which had more vague or general characteristics [fig. 2]. Those with detailed “character” often show two distinct lobes; the larger lobe has furrows or “bulges” that resemble “wrinkles,” as if the internal organs of the sac-like creature are deteriorating under the “skin.” This alone would lead

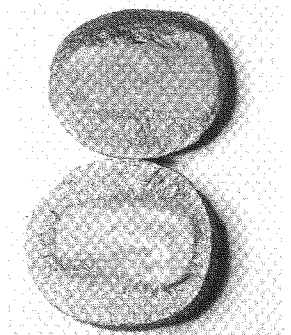


Fig. 2

one to believe the fossils represent some kind of soft-bodied invertebrate animal.

So, WHAT KIND of animal were (or are) the “blobs?” Several professional authors, including Richardson, G. S. Nadasdy, and, most significantly, Merrill Foster [see e. generally], conclude the “blobs” are almost all “soft-bodied coelenterates” belonging in the general group which includes modern MEDUSAE. In fact, Donald Auler’s masterful sketch of the holotype “Blob” clearly shows all of the “with character” details [fig. 3, from e., p. 20 of 1999 ed.] that Terry Wolff considered important! In his official description, Foster points out, paraphrasing Nadasdy, “The common shapes

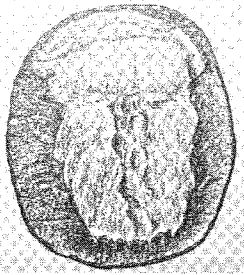


Fig. 3

taken by “blobs”... are comparable to oral, aboral, and lateral impressions of modern medusae. ... [with] some blobs show[ing] impressions that resemble tentacles or mouth lobes or both.... [as well as] reticulate gastro-vascular networks seen in some Recent medusae.” [e., p. 205] Foster

made it a new genus and species of soft-bodied coelenterate, *Essexella asherae*, naming it after Helen Asher, who donated the holotype (the official specimen upon which the name and complete description are

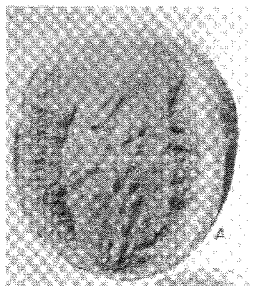


Fig. 4

based). [fig. 4, from e., p. 238] Foster also discusses the “bell-shaped” skirt which covers most of the tentacles, but whose “projections,” indicating “possible oral lobes,” can be seen on some specimens, including the holotype [fig. 5 projections labeled “o1,” from e., p. 238]

In other words, “Blobs” are **JELLYFISH!**

Ah, but NOW comes the interesting twist—the proper name for a majority of “Blobs” (a few types are still unnamed or have been put into a genus called *Reticulomedusa*) is still *Essexella asherae*; they can still be called by the popular name

JELLYFISH; they can most likely be put into the Class **SCYPHOZOA** (sometimes called **SCYPHOMEDUSAE**).

However, based on recommendations from the International Biological Nomenclature Committee, which for the last twenty years or so has attempted a coordinated nomenclature system for both fossil and living organisms (hopefully finally eliminating some high school biology books’ classification of brachiopods as mollusks, for example)—the preferred phylum to use for “blobs” is **CNIDARIA**, with the common name being **cnidarian**. Even Raymond Moore, Editor-in-chief of the Treatise On Invertebrate Paleontology, admitted in the 1956 Coelenterata volume that **CNIDARIA** is preferable “after the removal of sponges and ctenophores...” [f., p. 10] Yes, classes **HYDROZOA** (“coelenterates” in which the polyp stage dominates and which usually have a chitinous skeleton sheath), and the well-understood **ANTHOZOA**

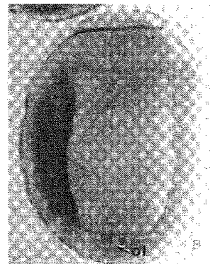


Fig. 5 - Holotype illustration showing projections

(corals and their kin) have stayed the same, but are now also within the **PHYLUM CNIDARIA**.

“Blobs,” then, are of the **PHYLUM CNIDARIA**, **CLASS SCYPHOZOA**, based on the fossil and living evidence that a major part of their life cycle is spent as **medusae**, with some sort of “bell” or “dome” (think of modern jellyfish) and some sort of tentacles. By the way, fossil Scyphozoans go way, way back to the Proterozoic Ediacaran Stage deposits of South Australia (700 million years ago, +/- a few million). [see g., pp.240-41] And, some of the most spectacular ones have been found in Germany in the Solnhofen Limestone of Jurassic Age. A few have even been found lately in deposits in some other states. But, none are as varied and prolific in number as the “Blobs” of Illinois’ Mazon Creek!

Oops, I did start out mentioning the “Wyes” along with the Blobs, didn’t I? Well, there are these strange, Y-shaped critters in the Mazon Creek, that have been given an even stranger official name, *Escumasia roryi*, which is the name of—but that’s another story!

Footnotes/References

figs. 1 and 2 photos of specimens from the Cecilia Duluk collection of Mazon Creek fossils.

a. George Langford, *The Wilmington Coal Flora*. Second Edition. Downers Grove: Esconi Associates, 1958.

b. George Langford, *The Wilmington Coal Fauna and Additions to the Wilmington Coal Flora*. Second Edition. Downers Grove: Esconi Associates, 1963.

c. ESCONI, *Keys to Identify Pennsylvanian Fossil Animals of the Mazon Creek Area*. Downers Grove, Illinois: ESCONI, 1989

d. Cecilia Duluk, “Hunting Ghosts, Blobs, and Assorted Monsters in Illinois’ Coal Age Nodules,” *Earth Science*, July-August, 1968, pp. 156-160.

e. Merrill W. Foster, Soft-Bodied Coelenterates in the Pennsylvanian of Illinois,” *Mazon Creek Fossils*, Matthew H. Nitecki, Editor. New York: Academic Press, Inc. 1979. pp, 191-267.

f. Raymond C. Moore, Director & Editor. *Treatise On Invertebrate Paleontology, Part F Coelenterata*. Lawrence, Kansas: University of Kansas Press, 1956 (reprinted 1963).

g. Arthur B. Busey III, et al. *A Guide To Rocks & Fossils*. San Francisco: Fog City Press, 2nd edition, 2002. Pages 240-241.

Author’s Note: There are SO many books, articles, and professional papers on the Mazon Creek material that it would be too lengthy to list them all. If the reader is seriously interested in further study, please email me at ceduluk@wowway.com, and I will try to send you an additional list, especially those with many good illustrations.

SHOW DATES

Jan 21-22, 2006

KEOKUK, IA, Show, Worthen Earth Searchers, Keokuk Mall, Contact Merlin Tobias, 1765 E Co Rd 900, Carthage, IL 62321, (217) 743-6259, ktobias@adams.net

Feb 13, 2006

PARK FOREST, IL, Silent Auction, South Suburban Earth Science Club, Freedom Hall, 410 Lakewood Blvd, Sun 1:00-4:30, Contact: Helen Funk, 174 Westwood, Park Forest, IL 60466, (708) 747-3566, ssescus@yahoo.com

Mar 11, 2006

Chicago, IL, Chicago Rocks and Minerals Silent Auction, March 11, location 4056 N Pulaski Ave, Salvation Army - Irving Park Corps, Chicago, IL. Time 5:30pm to 10pm. For information contact Ron Gutkowski at 773-775-9549

Mar 11-12, 2006

MACOMB, IL, 26th Annual Show, Geodeland Earth Science Society, WIU Student Union, Murray St, Sat 10:00-6:00, Sun 10:00-5:00, Contact: Dean Stone, 900 Willard St, Galesburg, IL 61401, (309) 342-7132, stonerocks@hotmail.com

Mar 25-26, 2006

LINCOLN, NE, 48th Annual Show, Lincoln Gem & Mineral Club, Pershing Ctr, 226 Centennial Mall S, Sat 9:00-6:00, Sun 10:00-5:00, Contact Pat Akins, Jr, 5017 NW 6th St, Lincoln, NE 68521, (402) 477-1322

May 6-7, 2006

ROLLA, MO, 11th Annual Swap, Central MO Mineral, Fossil, & Gem Society, Central Missouri Regional Fairgrounds, 12860 S Hwy 63, Sat 9:00-5:00, Sun 10:00-3:00, Contact Ray Prater, PO Box 1426, Rolla, MO 65402, (573) 341-2383, gbryl95@rollanet.org

April 1-2, 2006

Green Bay Wis The Neville Public Museum Geology Club hosts a rock, gem, and mineral show April 1st. 9 a.m. to 5 p.m. and April 2nd. 10 a.m. to 4 p.m. at the Neville Museum in Green Bay Wis. 12 dealers and many exhibits.

2006 Federation Shows

California

June 9 - 11, 2006
Angel's Camp, CA

Eastern

November 18-19, 2006
West Palm Beach, FL

Midwest

May 19 - 21, 2006
Southgate, MI

Rocky Mountain

June 9 - 11, 2006
Stillwater, OK

South Central

August - -
Bossier City, LA

Northwest

July 14 - 19, 2006
Kelso, WA

Southeast - AFMS

August 14 - 20, 2006
Nashville, TN

A.F.M.S. Newsletter - December, 2005 - January, 2006



GENERAL MEETING
December 11, 2005,
Antelope Park Shelter

The Christmas Party meeting was called to order at 7:27 p.m. by First Vice President Pat Akins, following a scrumptious potluck supper. Nineteen adult members and no guests were present.

OLD BUSINESS: The reading of the minutes and treasurer's report was suspended to the January meeting, as they were not published in the Pick & Shovel by the meeting date.

David Heffelbower reported that the January Swap is all set to go on January 28 from 1:00 p.m. to 5:00 p.m. The pizza supper will immediately follow the closing of the Swap, with general meeting to commence at 7:30 p.m.

Pat Akins reported that we have a full slate of dealers for the 2006 Show. He is trying to get corporate sponsors to pick up the advertising costs in exchange for identification of materials services by certain club members. Pat is also trying to line up a live radio broadcast for Saturday. We will be reaching out to scouts and school groups, and

offering programs for merit badges. He hopes to have booths for the Omaha Club and the Bead Society, so they might promote their respective clubs.

Roger Pittard renewed his motion to change the General Meeting night to the third Thursday of the month for all months, unless scheduled differently for a specific purpose, and Marilyn Stewart seconded that motion. Motion carried unanimously. The meeting dates for 2006 will be January 28, February 16, March 16, April 20, May 18, September 21, October 19, November 16, and December 10.

NEW BUSINESS: There was no new business.

The meeting adjourned at 7:54 p.m. on a motion by Shirley Rockel with second by Charles Wooldridge. Snacks and Rock Bingo followed the meeting.

Thanks to all who attended. As always, a great assortment of very tasty food abounded, and everyone there had a great time.

Respectfully submitted,

Sharon Marburger

LINCOLN GEM & MINERAL CLUB, INC. – BOARD OF DIRECTORS – December 7, 2005
Anderson Branch Library

NOTE: At 6:45 p.m., during the setup of the meeting room and prior to commencing the meeting, President Marburger tripped and fell, injuring himself. An accident report was filed with the library. At the conclusion of the meeting, he went to the Emergency Room where it was discovered he fractured a vertebrae.

President Jim Marburger called the meeting to order at 7:08 p.m. Board members present were Jim Marburger, Sharon Marburger, Vera Lyman, John Harrison, Charles Wooldridge, and Jim Atkins, along with guests Ed Ridge and David Heffelbower.

The minutes of the November meeting were distributed. Charles Wooldridge moved to accept the minutes as printed, Jim Atkins 2nd. Motion carried. The treasurer's report for November was handed out and John Harrison moved to accept the report as printed, 2nd by Charles Wooldridge. Motion carried.

OLD BUSINESS: No Show Report was made as Pat Akins was not present. The report was again tabled to the next meeting, however, the show budget was submitted and handed out.

David Heffelbower provided the Swap report. The Swap will be held January 28, 2006 at the Antelope Park Shelter, from 1:00 p.m. to 5:00 p.m. Charles Wooldridge moved that the silent auction proceeds go to the Special Lapidary Class Education Fund, with a second by Jim Atkins. Motion carried. Mr. Heffelbower requested that Secretary Marburger see that the advertisements be made.

If the Club is to reach out and recruit young people for membership, it will be necessary to have a dedicated leader. The search is on for such a person.

NEW BUSINESS: Vera Lyman informed the Board that Kinko's has raised the rental rate of their meeting rooms to \$40 an hour. She checked into other meeting places and has reserved meeting rooms at the Anderson Branch library for January, and the Walt Branch library for February and March.

The Board chose to continue the Club's memberships in NAOCI, the Midwest Federation, and Friends of the Museum.

The meeting adjourned at 7:55 p.m. on a motion by John Harrison, 2nd by Jim Atkins.

Respectfully Submitted,

Sharon Marburger

GENERAL MEETING

November 17, 2005, Antelope Park Shelter

The meeting was called to order at 7:10 p.m. Sixteen adult members were present. One guest was present: Jackie Barnhardt.

OLD BUSINESS: Jim Atkins made the motion to accept the minutes of the October meeting as printed, followed by a second by Charles Wooldridge. Motion carried. John Harrison made the motion to accept the October Treasurer's report, second by Phyllis Parks. Motion carried.

The Christmas Party will be held December 11 at 6:00 p.m. As usual, the club will provide the meat dish and beverages, members are asked to bring a hot dish and salad or dessert. There will also be an inexpensive, hobby related gift exchange.

David Heffebower reported that plans for the 2006 January Swap are being coordinated. Vera Lyman will be reserving the room.

There was no show report as Show Chairman Pat Akins was not present.

No nominations were received from the floor for officers. Charles Wooldridge moved to close nominations for president, second by Phyllis Parks. Charles Wooldridge also moved to close nominations for first and second vice president, second by Jim Atkins. Mary Pittard moved to close nominations for

secretary, second by Susy McMahan. Roger Pittard moved to close nominations for treasurer, second by Susy McMahan.

Judy Reilly nominated David Heffebower for board, David accepted the nomination. Roger Pabian was nominated for board, but declined. Jim Atkins moved to close the nominations for Board, second by Mary Pittard.

Phyllis Parks moved to suspend the rules and accept the list of officers and directors for 2006, second by Vera Lyman, motion carried. The officers and board members for 2006 are: President – Jim Marburger; 1st Vice President – Pat Akins; 2nd Vice President – Roger Pittard; Secretary – Sharon Marburger; Treasurer – Vera Lyman; and board members Jim Atkins, John Harrison, Charles Wooldridge, and David Heffebower.

Phyllis Parks nominated Vera Lyman, and John Harrison nominated Ed Ridge to next year's nominating committee. Charles Wooldridge moved to cease nominations for the nominating committee, second by Susy McMahan.

NEW BUSINESS: The Midwest Federation directory of events and program directory can be found online at

"<http://www.amfed.org/mwf/>"

. See Vera Lyman if you don't have internet access and would like copies.

Discussion regarding the possibility of changing the monthly general meetings to the third Thursday of the month. This would affect only four meetings. The purpose of changing the meeting date to the third Thursday is to have consistency and make the meetings evenly spaced for those who attend Board meetings. This would make every-other-week meetings rather than back-to-back meetings for Board members. Charles Wooldridge moved to suspend the rules and take a vote at this meeting, second by John Harrison. It was pointed out that the voting on this subject was published to occur at the December meeting, thus causing Mr. Wooldridge to withdraw his motion, and Mr. Harrison his second. The vote will take place at the December meeting as published.

Treasurer Lyman is now accepting dues for 2006.

The meeting adjourned to the program at 7:38 p.m. on a motion by Jim Atkins, 2nd by Phyllis Parks. The program, Secrets of the Dead, was provided by David Heffebower. Very entertaining! Thank you, David.

Respectfully submitted,
Sharon Marburger

LINCOLN GEM & MINERAL CLUB, INC.

BOARD OF DIRECTORS

November 2, 2005

Kinkos, 48th and Vine

President Jim Marburger called the meeting to order at 7:03 p.m. Board members present were Jim Marburger, Roger Pittard, Sharon Marburger, Vera Lyman, and Jim Atkins, along with guest Ed Ridge.

The minutes of the October meeting were distributed. Jim Atkins moved to accept the minutes as printed, Vera Lyman 2nd. Motion carried. The treasurer's report for October was handed out and Sharon Marburger moved to accept the report as printed, 2nd by Roger Pittard. Motion carried.

OLD BUSINESS: The Show Report, including show budget, were tabled to the December meeting. The 2006 January Swap report was also carried over to the December meeting.

NEW BUSINESS: The application for membership for Edward and Pat Dvorak came before the Board. Vera Lyman moved to accept them as members, second by Sharon Marburger. Motion carried.

The matter of accepting defunct clubs' members and waiving the meeting attendance requirement was discussed. After a lively discussion, the matter was tabled to the Long Range Planning and By-Laws Committee.

A request to divide active and non-active members in the "Who's Who" was also tabled to the Long Range Planning and By-Laws Committee.

The subject of purchasing a projector for computer presentations was raised again. If one is purchased, it will cost no less than \$800. No immediate action will be taken.

Roger Pittard made a motion to bring before the rank and file to change all of the general meetings to the third Thursday of each month, beginning in February 2006. Sharon Marburger seconded the motion. Motion carried. This change would more evenly space the Board and General meetings.

The meeting adjourned at 8:09 p.m. on a motion by Roger Pittard, 2nd by Jim Atkins.

Respectfully Submitted,
Sharon Marburger

LGMC Treasurer's Report for November, 2005

Pinnacle Checking Balance Oct. 31, 2005 \$ 6,625.81

Receipts:

Ed & Pat Dvorak-Member Dues/Regis '06	25.00	
Linda Parks-Lundgren/Andrew '06	12.00	
Aulden & Marilyn Stewart '06	20.00	
Roger & Mary Pittard '06 & GP	25.00	
Charles & Karen Messenger '06	50.00	
(30.00 to SLCEF)		132.00

Payments:

Kinkos-Board Mtg 11/2 - 1%hrs	16.06	
Judy Reilly(Oct Cov-7.36)(Nov 86.14P&S)	93.50	
JJ&L Rocks & Minerals-SLCEF supplies	108.67	218.23

Pinnacle Checking Balance November 30, 2005 \$ 6,539.58

LGMC Treasurer's Report for December, 2005

Pinnacle Checking Balance Nov. 30, 2005 \$ 6,539.58

Receipts:

Show Stipend Returned (RKP)Credit SLCEF	50.00	
Membership Dues/Registrations-2006	155.00	
Member donations (meat)Christmas Mtg	16.00	
Donation - SLCEF - Simons	2.00	
Gem Palette Subs (3) (Suspense)	15.00	238.00

Payments:

City Parks & Rec-Jan Swap/Mtg site	165.00	
Super Saver-Christmas Party ham	9.98	
Russ'-Christmas Party chicken (50 pc)	42.79	
Vera Lyman-Replace 2 Club Ink stamps	32.08	
Postmaster - P O Box Rent	68.00	317.85

Pinnacle Checking Balance December 31, 2005 \$ 6,459.73

Rock Shows by Date

January 2006

13th–15th

49th Annual Gila County Gem & Mineral Show

Gila County, Fairgrounds, Globe, AZ. Contact Bill Morrow, 928-425-0194 or Clyde Caviness, 928.425.7200.

April 2006

21st–23rd

53rd Annual Show "Kansas Ageless Wonders"

The Wichita Gem and Mineral Society, Cessna Activity Center 2744 George Washington Blvd, Wichita, KS, www.geocities.com/wgms2001, wgms2001@yahoo.com or Contact Show chairman Gene Maggard 316.742.3746 or pmaggard@soutwind.net

May 2006

13th–14th

59th Annual Show "Rocks & Minerals of the Colorado Plateau"

Grand Junction Gem and Mineral Club, Two Rivers Convention Center, 1st & Main, Grand Junction, CO. Contact Don or Marj Gibboney, 193-27 Road, Grand Junction CO 81503, 970.245.2885

20th–21st

Rock & Gem Show

Casper, WY at the Parkway Plaza. Two 8-foot tables for \$50, contact wyo_rockhound@msn.com for a show packet.

June 2006

9th-11th

"Old Rocks – Pretty Stones"

Fri and Sat. 10 a.m. - 5 p.m. Sun. 11 a.m. to 4 p.m. Sponsor Club: Stillwater Mineral and Gem Society, Location: Payne County Expo Center (3 miles east of Stillwater on Hwy. 51) Stillwater, OK. Contact Persons: Charles Ramming at 405-624-3448, e-mail: wramming@juno.com, Dan Lingelbach at 405-372-8635, dan_osu@juno.com. Other information: RV camping is available at the Expo Center as well as nearby campgrounds. Hook-ups is \$10 per night and dry camping is free. Convention Headquarters is the Best Western Motel at 600 East McElroy. Rooms have been blocked till May. Phone 800-353-6894 for reservations.

September 2006

15th–17th

The Denver Gem & Mineral Show

Sponsored by the Greater Denver Area Gem & Mineral Council.

Merchandise Mart, 451 East 58th Ave., Denver, CO. Hours: Fri: 9 am - 6 pm, Sat: 10 am - 6 pm, Sun: 10 am - 5 pm.

Show chair: Martin Hannu, email: info@denvermineralshow.com. Website: <http://www.denvermineralshow.com/>.

Phone: 303.233.2516.

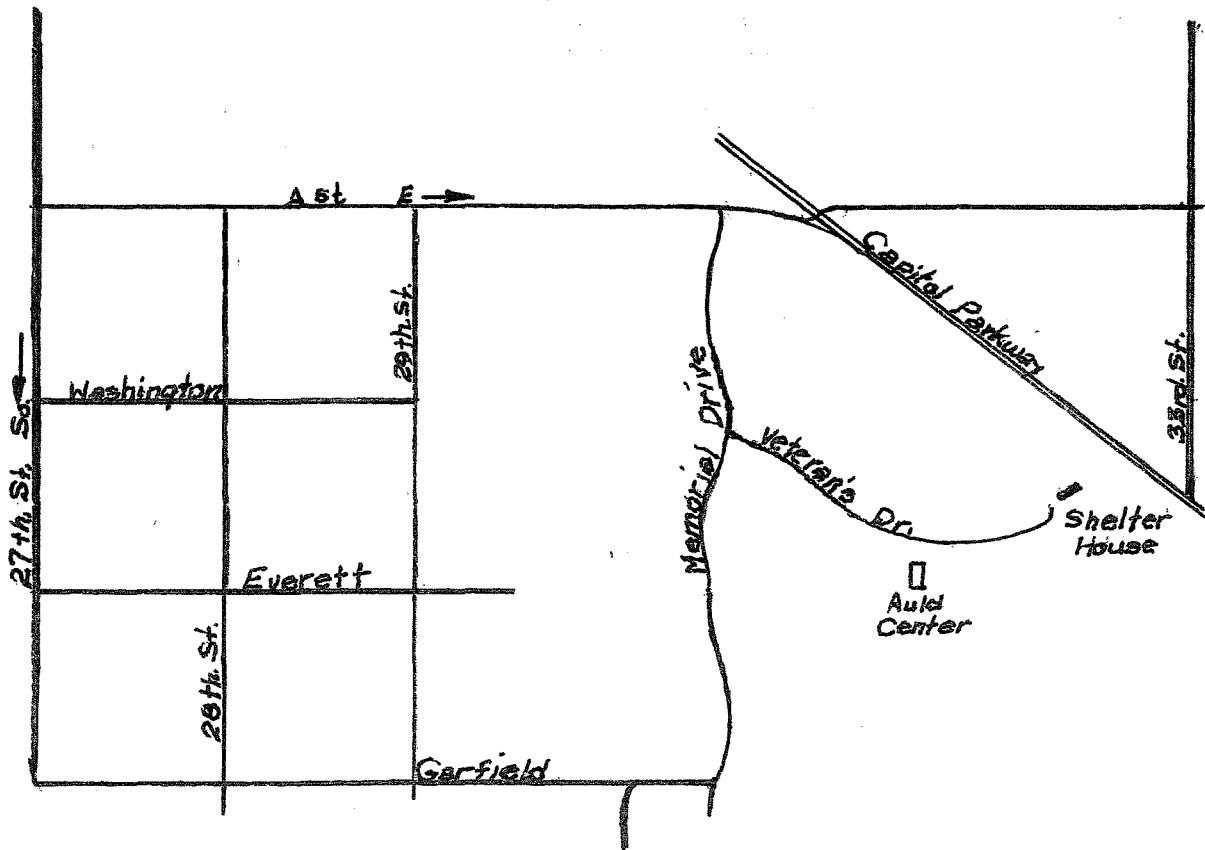
Lincoln Gem and Mineral Club

28 th Annual Gem and Mineral Swap

Saturday January 28th, 2006

Hours: 1:00 P. M. To 5:00 P.M.

Location: Antelope Park Shelter House
(Same place as last year)



All buyers must use
Swapper Bucks
Available at the door.

Buy, Sell or Trade: Rocks, Minerals, Fossils, Finished Gemstones,
Rough Gemstones, Crystals, Beads, Books, Equipment, Supplies and
any other gem and mineral related materials.

Admission: Swappers with tables should provide materials for silent
auctions. Proceeds go to the Lincoln Gem and Mineral Club's
Lapidary Education Fund.

The swap will be followed by the general meeting of the Lincoln Gem
and Mineral Club at 7:30 P.M. Visitors are welcome to both events.