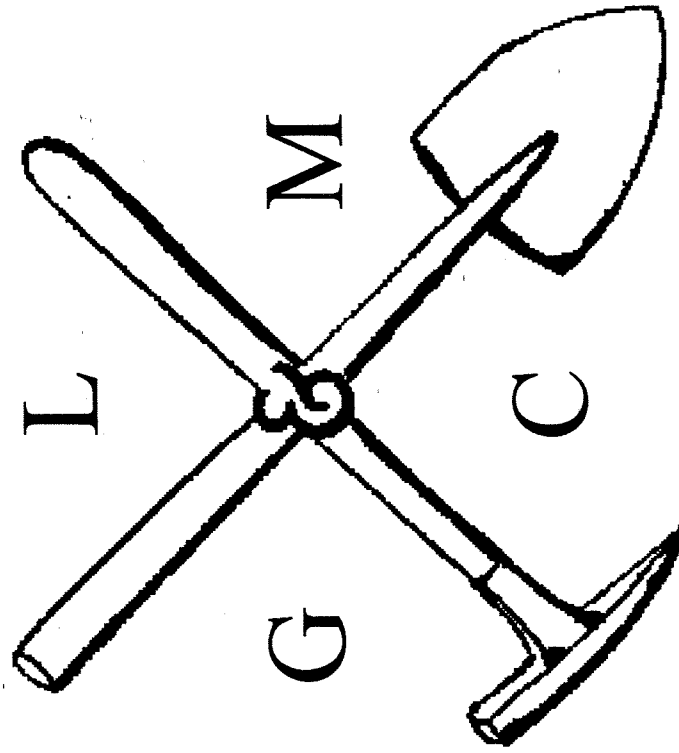


# THE PICK & SHOVEL

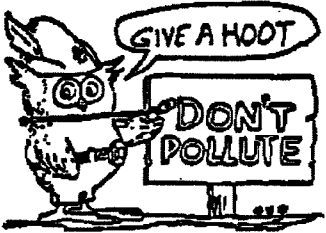
May 2005



OFFICIAL PUBLICATION OF

LINCOLN GEM & MINERAL CLUB

LINCOLN, NEBRASKA



Mail Exchange Bulletins To:

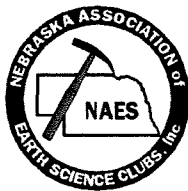
Lincoln Gem & Mineral Club  
Box 5342  
Lincoln, Nebraska 68505-0342



## H. E. L. P.

Help Eliminate Litter Please

Associated with



# The Pick & Shovel

Volume 45, Issue 9, May 2005, Page 1

## Club Events

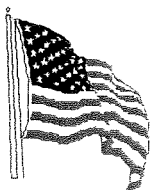
- May** 26 General Mtg, Antelope Park, 7 PM  
**July** 2-4 Field trip (p. 3)  
17 Grinding Party, Pioneers Park Nature Center 1-4PM  
**Sept** 7 Board Mtg, Kinko's 48th& Vine 7PM  
22 General Mtg, Antelope Park 7PM  
**Oct** 5 Board Mtg, Kinko's 48th& Vine 7PM  
27 General Mtg, Antelope Park, 7PM

### Recap April Meeting

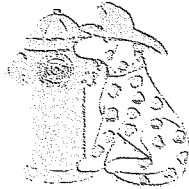
**PROGRAM-** Youth Night (see p.2)  
**Food-** WOW, what a feast! Thanks to **Mary Pittard** and **Shirley Rockel** for bringing their delicious cookies and thanks to everyone who brought all the other wonderful treats.  
**Door Prizes-** Thanks to **Jim & Sharon Marburger** for donating the door prizes of mozarkite and other great specimens

### May Meeting

**Program:** by John Harrison & Jim Marburger  
**Scholarship Presentation** by Doane Professor  
**Food:** Club will provide "supper" of cold cuts and rolls. Members, please bring desserts.  
**Door Prizes:** Judy Reilly  
**Post-Show Committee Meeting-** following the general meeting. Committee members, please attend.



*Memorial Day*  
*May 30, 2005*



### President's Message

Greetings, fellow club members! We have had a productive first half of 2005: **January Swap, Geology Day, Pfizer Science Fair, 47th Annual Show, and Youth Night.** I thank everyone who participated and/or worked to make these events successful.

I encourage all club members to make an effort to attend club meetings. Lincoln has been selected as the site of the **2008 Midwest Federation Show.** We need everyone's input to make that show one to be talked about for years to come. The planning starts now, so bring your ideas. Bring field trip stories to meetings. Your story could provide inspiration to others. If you have interesting photos or specimens, consider doing an educational program for our general meeting. I would like to see our club flourish, as so many of the surrounding clubs are dying. Only we can keep our club strong. After all, we don't want it to petrify!

The Nominating Committee will begin accepting nominations for the 2006 Board. If you would like to nominate someone, or if you would like to be considered for office, please contact a member of the committee. Be a part of the decision making process. (Board and Committee members are listed on the inside cover of the Pick & Shovel.)

There are also vacancies on some standing committees. If you would be interested in serving on a committee, please contact me. We currently need to fill Historian and Librarian. No special skills required.

We are looking forward to collecting trips this summer. As mentioned before, my **President's Field Trip** will be July 2, 3, and 4 at Crawford, Nebraska. We plan to travel on July 1 and 5, as travel will take about ten hours from Lincoln. See the field trip article inside for more details.(p.3) At least five rigs from the Denver Guild will be joining us, and possibly one from Illinois. I have opened the invitation to the Omaha Club and to anyone else who would like to participate. I would like to see a strong showing of Lincoln club members.

The **Grinding Party** is scheduled for July 17 at the Nature Center. It will be the perfect opportunity to share what you collected at the President's Field Trip!

As you can see, every member is important. Please make an effort to be active in the club.

Have a safe and happy summer. I hope to see you at Crawford and the Grinding Party. Otherwise, I'll see you in September.

Rock on!

**Jim Marburger**



## Youth Night



Take an egg carton, a wad of cotton, some labels, and choices of dozens of rock & mineral specimens, and what do you have? A genuine rock collection! On Thursday, April 28, club members, their children, grandchildren and some visitors, participated in LGMC's Youth Night. Children and "children at heart" put together collections which included specimens of prairie



agates, geodes, polished stones, peacock ore, rose quartz, sea shells, fossils, petrified wood, Lake Superior Agates, and many others. In fact,

there were so many specimens, the children were able to **overfill** 2 egg cartons each! As co-ordinator of this event, I want to thank everyone in the club for participating generously and enthusiastically. We didn't have a big crowd of children, but those who participated really had a blast. And the club members came together in a fun and

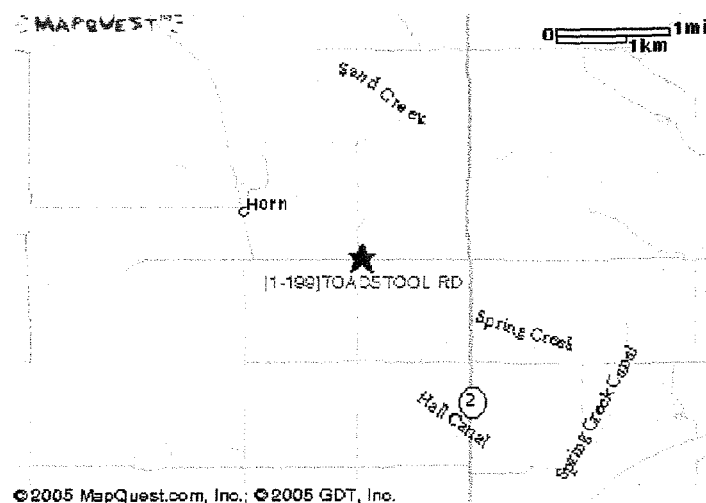
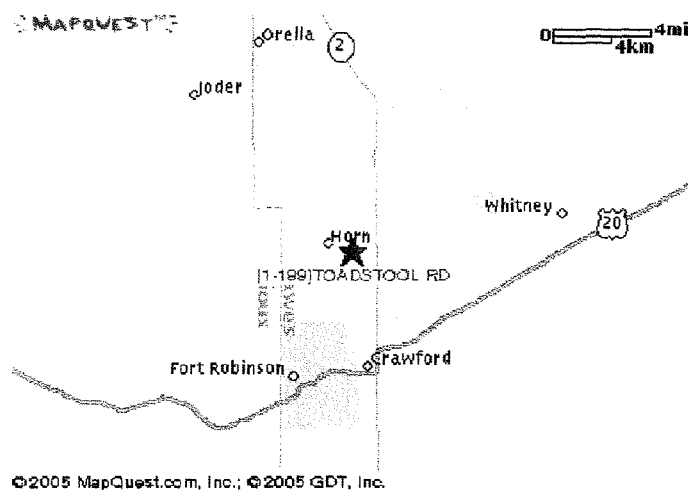
exciting way; displaying & identifying specimens, and helping the children choose and label their specimens. Looking at all those rocks really put me in the mood for field tripping! Thanks to **Susy McMahan** and **Vera Lyman** for their participation in planning Youth Night. We hope to plan more youth-oriented events soon. **Judy**



### President's Field Trip by Jim Marburger

Lincoln Gem and Mineral Club invites you to participate in our President's Field Trip to the Oglala National Grasslands north of Crawford, Nebraska. The trip is planned for July 2, 3, 4, with travel on the 1st and 5th for the Lincoln Club. This is because it is about a 500 mile trip from Lincoln, and we don't even leave the state! At this time, we are planning to make camp at Toadstool Park in the heartland of the Oglala National Grasslands. The park is located 4 miles north of Crawford on State Highway 2 and 71, then about 15 miles northwest on Toadstool Road. There are signs to direct you to the park. The campground consists of 6 picnic tables and fire grates, a hand water pump, and fully accessible modern vault toilets. A \$3 per vehicle day use fee or \$5 per night camping fee is charged. Back country or primitive camping is allowed anywhere on the National Grasslands. Campfires are allowed unless restricted due to high fire danger.

The Oglala National Grasslands and surrounding area is a virtual paradise for those interested in rocks, minerals, gemstones and fossils. A wide variety of cutting material, including prairie agate (state rock), chalcedony, Nebraska blue agate (state gemstone), petrified wood, jasper, moss agate, palm wood, and flint can be found. Minerals and fossils to be found include barite sand crystals, pseudomorph, chalcedony roses, calcite, fossil clams, fossil plants, cycads, leaf imprints, and fossilized algae, just to name a few. Collection on private land requires permission from the owner. Rock hounding is allowed anywhere on the National Grasslands, with the following restrictions: Collecting of any object for commercial purposes is prohibited; trading and bartering are considered commercial activities. USDA, Forest Services policy and guidance in 36 CFR 261.9 states, "The following are prohibited: digging in, excavating, disturbing, injuring, destroying, or in any way damaging any prehistoric, historic, or archeological objects." A permit is required for the collection of vertebrate paleontological specimens, including their trace fossils (tracks) on any federal lands. These permits are issued only for scientific research and educational purposes. Currently, the entire Grasslands is open to motorized travel, however, if heavy rain should occur, the roads can become mucky due to bentonite clay.



Motels are an option for those who do not camp.

Hilltop Motel 304 McPherson St. Crawford, NE 69339 (308) 665-1144

Town Line Motel 3591 Highway 20 Crawford, NE 69339 (308) 665-1629

There is a great campground west of Crawford called Fort Robinson State Park. This park is busy and information can be found at the Nebraska Game and Parks Commission website. [http://www.ngpc.state.ne.us/parks/guides/parksearch/showpark.asp?Area\\_No=77](http://www.ngpc.state.ne.us/parks/guides/parksearch/showpark.asp?Area_No=77)

There is a lot going on in Crawford on the July 4 weekend: a rodeo, Western Art Show at Fort Robinson, a 5k run, annual parade, barbecue, live music, antique tractor pull, and fireworks on the 4th.

We will have our cell phones on and hope there is cell coverage. Jim Marburger (402) 430-6703, Sharon Marburger (402) 429-3323. You may phone us at home prior to July 1 if you have questions - (402) 792-2337 – or e-mail [jm24122@alltel.net](mailto:jm24122@alltel.net).

## Tips & Hints

From Quarry Quips, April 2005

### Removing a stuck Cabochon

Here's a quick, safe way to remove a cabochon that gets stuck in the bezel of a finding when grinding for a perfect fit. Don't start picking and prying. Take it to the kitchen, and have a towel or washcloth handy. Put a cup or two of water into a small pan and bring to a boil. Take a pair of needle nose pliers or tweezers and dip the offender in hot water (one or two minutes is usually enough). Remove and tap it gently with a pencil over the towel. It should drop out free and unharmed. The trick is very simple. The metal of the finding will expand more quickly than the stone, so the stone drops out.

Original source MAGS Rockhound News December 2002, author unknown, taken from the Golden Spike News, Golden Spike G&M Society, Ogden Utah, April 2004



### Cleaning Fragile Crystal

To clean fragile or hard to reach recesses in mineral specimens, try CREW, a product of Johnson's Wax. Spray the foam on the rock, let it set a minute, then rinse with water. It is safe on all materials including calcite and fluorite.

Author unknown, taken from The Tumbler, Boeing Employees' Mineralogical Society Seattle Washington, July 2004

From The Loup Scoop, May 2005

via The GI Nugget

### SHOP HINT

from the Golden Frog 2/05, via the Breccia 4/05

### HOW TO CUT OBSIDIAN

**GOLD SHEEN:** To get the most out of mahogany gold sheen obsidian, saw with the bands, as if they were a stack of plates, and you wish to un stuck them. Watch for "fire spots" in gold sheen. It is not plentiful, but opal—like colors do sometimes occur in mahogany gold sheen.

**IRIDESCENT:** There are two types of iridescent obsidian. In cutting both correctly, the orientation of the color is most important. One type of obsidian is banded and the color lies in the bands. On the unbanded types obsidian the surface has to be chipped to find the color. The banded type will have several colors or shades, while the unbanded types will have only one color. Cut the banded material parallel to the bands to get effect. To get rainbow effect, cut the stone at an approximate 15 degree angle across the bands.

**MIDNIGHT LACE:** Lace patterned obsidian should be cut across the surface pattern that you desire reproduce. Though obsidian is comparatively soft, it is still very important to sand away all scratches before going to polish. Some advise that wet sanding be done, since obsidian is heat sensitive and very brittle. For final polish, felt with cerium oxide is the choice. Should you be faceting some particularly gemmy obsidian try cerium oxide on lucite, but keep it wet.

**RAINBOW OBSIDIAN:** Cut parallel to flow layers. These can be seen by examining fractured surfaces using an overhead single lamp bulb. these are not always straight, it may be necessary to turn the stone slightly in the saw. Examine each slab set with either water or saw oil to see if the correct angle has been obtained.

**GRINDING OBSIDIAN CABS:** Approach your grinding wheel with the material at a slight horizontal angle. If brought straight in, it may be a "Shattering" experience as obsidian fractures conchoidally, and this is a sure way to do it.

**POLISH ON OBSIDIAN:** Keep the polishing wheel wet. A dry polishing will result in blisters and scratches. Obsidian is relatively inexpensive, easy to obtain and soft. With proper understanding of its glassy properties you can obtain some beautiful results. After obsidian is sawed, be sure to bevel the edges all around on your fine grinding wheel to keep them from flaking and chipping. Wear goggles or glasses at all times. If a small chip of glass (obsidian) got into your eye, it would be hard to remove as it is transparent and hard to see even with a powerful magnifying glass, and the edges may cut your eye to great extent before it could be removed.

## In memoriam

Our thoughts go out to club members who have recently lost loved ones: Kay Jurgens and her family in the loss of Kay's mother, Ruth Mumm and Vera Lyman in the loss of her sister.



Many thanks to the following for their contributions to this month's Pick & Shovel: **James and Sharon Marburger, Vera Lyman and Phyllis & Linda Parks.** Judy Reilly

**John Harrison** wishes to thank everyone who participated in the 2005 Annual Show for making the event such a success. We again thank John for his leadership as Show Chairperson

A special "Thank You" to Lincoln Gem & Mineral Club and all of you who sent cards and special thoughts at the loss of my sister.

Sincerely,  
Vera Lyman

## MWF News

From MWF Newsletter, May 2005

### ENDOWMENT FUND FUN IN AUGUST AT THE CONVENTION! -

By MWF Endowment Fund Chair

Besides the great silent auction that Elaine is having during the show, we will have MORE FUN scheduled for the Endowment Fund.

We will be holding a MWF Endowment Fund Raffle. I'm working with the AFMS EF Chair on this project. The AFMS and MWF are each going to have raffles with some AWESOME items...you can check out the AFMS items on the website [www.amfed.org](http://www.amfed.org). I'm hoping to have photos of our MWF items on our website soon, but for now here is a list of some of the items I have for our FIRST ENDOWMENT "FUN" RAFFLE...

-wire crocheted jewelry handcrafted by Marge Collins

- pendant with faceted stone handcrafted by Alan Hukill

- gem tree handcrafted by Judy Washburn

- fluorescent specimen from Rock Biz donated by Sandy Fuller & Martha Miss

- Lake Superior Agate donated by The Anoka County Gem & Mineral Club

- Michigan Copper Country suite of minerals donated by Pamela & Steve Hecht

- mineral/fossil specimens from the Hazel Kuntz Estate

- dino bone donated by Marve & Kitty Starbuck

AND I'm L@@KING for more items... fossils from Illinois, Iowa geode, quartz crystal cluster from Arkansas or any type of lapidary arts work...

Give me a call or an email with your donation!!!

Email- [steverox@up.net](mailto:steverox@up.net) or call me- (906) 337 2274.

## AFMS News

From AFMS Newsletter, May 2005

### PERMITS REQUIRED TO VISIT PUBLIC LANDS- By John Spunaugle, AFMS Conservation & Legislation Chair

There has been some discussion lately about permits being required to use or visit public lands. Some of the reports are accurate and some are not. I thought it might be time to talk about the facts around this issue.

It is true that Congress, in late 2004, passed the Federal Lands Recreation Enhancement Act by adding this legislation to a general appropriations Bill (HR 4818). It was signed into law as Public Law 118-447 in November, 2004. The new law authorizes the land management agencies (National Park Service, U.S. Fish & Wildlife Service, Bureau of Land Management and U.S. Forest Service) to charge 1) a standard amenity fee, 2) an expanded amenity fee and 3) a special recreation permit fee. An entrance fee for lands managed by the National Park Service is also authorized.

Amenity fees may be charged in National Conservation Areas, a National Volcanic Monument, and a destination visitor or interpretive center, as well as an area that provides significant opportunities for outdoor recreation that has substantial Federal investments, where fees can be effectively collected, and that contain all of the following amenities: designated developed parking; a permanent toilet facility; a permanent trash receptacle; an interpretive sign; an exhibit or kiosk; picnic tables and security services. Under the heading of Special Recreation Permit, fees may be charged for group activities and motorized recreational vehicle use.

The Federal Land managers must publish public participation opportunities in the Federal Register when establishing any new permit requirements under the new law. Special Permit Advisory Committees are also authorized.

To facilitate the issuing of passes, The America the Beautiful pass has been introduced to cover all passes. The agencies involved have just begun to provide information about passes.

**Places To Go, Things To Do****JUNE, 2005**

**11 — FAIRFIELD, IOWA:** Annual swap and sale; Sac & Fox Lapidary Club; Howard Park, three blocks north of the Square, between Main and Court; Sat. 8:30-5; buy, swap and sell beaded and other jewelry, rough rock, minerals, fossils, cut slabs, gemstones, collectors items; contact Dennis Kossow, P.O. Box 2495, Fairfield, IA 52556, (641) 472-5874.

**17-19 — COLORADO SPRINGS, COLORADO:** Show; Friends of Mineralogy, the Denver Museum of Nature and Science, Colorado Springs Mineralogical Society; Phil Long Expo Center, 515 Auto Mall Loop; Colorado gems, minerals, fossils, exhibits from the Rocky Mountain West, presentations, trading, giveaways, Rocky Mountain Micromineral Symposium, field trips; contact Ruth Cook, (719) 632-9686; e-mail: [csmsshow@cs.com](mailto:csmsshow@cs.com); Web site: [www.csms.us](http://www.csms.us).

**JULY 2005**

**8-10 — DURANGO, COLORADO:** 51st annual show; 4 Corners Gem & Mineral Club; La Plata County Fairgrounds, 2500 Main Ave.; Fri. 11-6, Sat. 10-6, Sun. 10-5; free admission; 35 indoor and outdoor dealers, mineral specimens, lapidary materials, equipment, fossils, prospecting, jewelry, beading, demonstrations, door prizes, raffle; contact Bill Birza, (970) 247-0187; e-mail: [wcbirzzz@durangolive.net](mailto:wcbirzzz@durangolive.net); Web site: [www.durangorocks.org](http://www.durangorocks.org).

**23-24 — RAPID CITY, SOUTH DAKOTA:** 25th annual show; Western Dakota Gem & Mineral Society; Rushmore Plaza Civic Center; Sat. 9-6, Sun. 10-4; dealers, displays, demonstrations, exhibits, silent auction, field trip, door prizes; contact Paul Reiter, (605) 716-4436.

**AUGUST, 2005**

**11-14 — BUENA VISTA, COLORADO:** 22nd annual show, "Contin-tail" Colorado Federation of Gem & Mineral Societies; Buena Vista Rodeo Grounds; outdoor show, 200,000 plus square feet of rocks, minerals, fossils, gems, beads, jewelry; contact Carolyn Tunnickliff, (303) 833-2939; e-mail: [ctunnickliff@comcast.net](mailto:ctunnickliff@comcast.net); Web site: [www.coloradorocks.org](http://www.coloradorocks.org).

**19-21 — ST. LOUIS, MISSOURI:** AFMS/MFMS convention and show; Greater St. Louis Association of Earth Science Clubs; Greensfelder Recreation Complex, Queeny Park, 550 Weidman Rd.; Fri. 10-8, Sat. 10-6, Sun. 11-5; contact Robert Morse, 135 Knox St., Troy, MO 63379-1343; e-mail: [rrcode@nothnbut.net](mailto:rrcode@nothnbut.net).

**SEPTEMBER 2005**

**2-5 — CRAWFORD, NEBRASKA:** 19th annual rockswap; Northwest Nebraska Rock Club; Crawford City Park, 1st St. and Main St.; Fri. 8-6, Sat. 8-6, Sun. 8-6, Mon. 8-6; free admission; Fairburn, Dryhead, Laker and Laguna agates, field trips, demonstrations; contact Wade Beins (308) 432-8950; e-mail: [crawfordswap@hotmail.com](mailto:crawfordswap@hotmail.com).

**15-18 — DENVER, COLORADO:** Show; The Bead Renaissance Shows; Holiday Inn, Northglen, I-25 and 120th Ave (exit 223); Thu. 10-6, Fri. 10-6, Sat. 10-6, Sun. 10-5; free admission; retail and wholesale, ancient, vintage, contemporary, and designer beads, buttons, jewelry, tools, books; contact J&J Promotions LLC, P.O. Box 420, Williamsburg, NM 87942, (505) 894-1293; e-mail: [info@beadshow.com](mailto:info@beadshow.com); Web site: [www.beadshow.com](http://www.beadshow.com).

**16-18 — LINCOLN, MISSOURI:** 45th annual show; Mozarkite Society of Lincoln; Lincoln City Park; Fri. 9-6, Sat. 9-6, Sun. 9-6; free admission; displays, silent auction, dig-your-own mozarkite for \$1 per pound; Linville Harms, (660) 827-4143.

**24-25 — SCHUYLER, NEBRASKA:** Annual show; Loup Valley Gem & Mineral Club of Eastern Nebraska; St. Mary's Social Center, 320 W. 10th St.; Lake Superior, Fairburn, and bubble gum agates, beads, flint knapping, Niobrara Chalk (Cretaceous) fossil preparation, three dealers, earth science speakers, field trip; contact Ben Vrana, (402) 352-5531; e-mail: [bbv5531@intergate.com](mailto:bbv5531@intergate.com).

From The Trilobite, May 2005

## Dinosaur News

### Soft Tissue Found in Tyrannosaurus Rex Bone

Scientists have found soft tissue in the thigh bone of a tyrannosaurus rex. The discovery was made when they had to break the bone in order to fit it in the helicopter. In the laboratory they found what they believe could be blood vessels, bone cells and blood cells. In some cases the material was so soft it could be squeezed out. The researchers hope that some museums may break some fossils to look for more tissue. The find may help to answer many questions about dinosaur physiology but casts serious doubt on the current models of how fossilisation occurs. Scientists say it is too early to know if we will see dinosaur DNA but are hopeful.

Source: [www.abc.net.au](http://www.abc.net.au)

### New Dinosaur Species Discovered in Georgia

Paleontologists in the United States have identified a previously-unknown species of dinosaur that is thought to have roamed some 77 million years ago. It has been named *Appalachiosaurus montgomeriensis*. The *Appalachiosaurus montgomeriensis* is a close relative to the *Tyrannosaurus rex* and was discovered as a team of scientists sought through numerous fossilised dinosaur remains. It existed ten million years before the T-Rex and was slightly smaller. One of the paleontologists, David R. Schwimmer, said: "We've been finding teeth and odd bones from this animal for 20 years, and it's nice to finally have a name for it." The name was officially recognised by the *Journal of Vertebrate Paleontology*.

Source: [story.news.yahoo.com](http://story.news.yahoo.com)

### Scientists Find Eggs In Dinosaur Mom

A geologist found a dinosaur's fossilized remains in China's Jiangxi province and sold them to a museum. The dinosaur was an oviraptorosaurian, a subgroup of theropods, and stood 10 to 13 feet tall when it lived 65 to 100 million years ago. "The museum that purchased it did not know there were any eggs inside," said Sato, a paleontologist at the Canadian Museum of Nature in Ottawa. "They thought it was just a skeleton." Shelled eggs within the female dinosaur's body cavity were discovered when researchers were preparing the 14-by-14-inch pelvis. Sato described eggs as "pineapple-sized potatoes", and bumpy in texture.

Source: [www.cnn.com](http://www.cnn.com)

### Construction Workers Find Mammoth in California

Building workers have discovered the fossilized remains of a mammoth and tusks at a construction site in a town outside Los Angeles, California. One paleontologist has estimated the remains could be aged between 400,000 and 1.2 million years old. The fossil was found mainly intact and could be a member of the first mammoth species to reach North America. The fossil is being retrieved from the site by the Paleo Environmental Associates of Altadena who expect to be finished by Friday. A partner in the Paleo Environmental Associates, Bruce Lander, said: "We have found about three quarters of the animal, which is very unusual. The tusks are between 8 and 9 feet long," adding the skeleton will probably be given to a museum.

Source: [story.news.yahoo.com](http://story.news.yahoo.com)

**NEW DINOSAUR SPECIES FOUND IN S. DAKOTA**

From Cedar Valley Gems, May 2005      **Scientists unveil fossil of flat-headed plant eater**

Rueters May 2, 2005 CHICAGO - A fossil found in South Dakota is that of a never-before-seen species of dinosaur, a horse-sized plant eater with spikes on its bony flat head, scientists said Monday. "When my colleagues saw a CAT scan of the new fossil, they tore up their family tree diagrams and said, 'Back to the drawing board!' We never suspected such a creature existed," said paleontologist Robert Bakker.

Discovery of the flat-headed member of the pachycephalosaur family changes the view of dinosaur history during the final days of the Cretaceous period 66 million years ago, showing that family trees were still evolving even as the entire dinosaur world was about to go extinct, the Children's Museum of Indianapolis said in announcing the find.

The nearly complete pachycephalosaur skull was donated to the museum by three amateur fossil hunters from Iowa who found it in 2003 while exploring the Hell Creek Formation in central South Dakota.

The discovery was announced in Indianapolis in conjunction with the annual meeting of the American Association of Museums.

The museum said the pachycephalosaur family is marked by dragonlike heads covered with horns, knobs and bumps. The most famous family member, Pachycephalosaurius, had a solid, domed bone helmet up to 8 inches (20 centimeters) thick, used to ram other dinosaurs in their sides, it said.

The new species has a flat head with no bone dome. The only other flat-headed pachycephalosaurs discovered were found in China and Mongolia, but all of those had had short muzzles and no long horns anywhere on the skull, the announcement said.

The pachycephalosaurs in general all had massive necks and could inflict significant "blunt force trauma" on other dinosaurs, Bakker said.

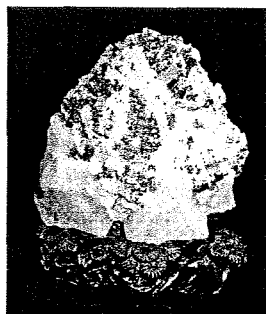
"This new species ... likely pressed their foreheads together and shoved one another really hard," he added.

The museum, billed as the largest of its kind in the United States, said the fossil would become part of its dinosaur exhibit.

*50<sup>th</sup> Golden Anniversary  
Mineral, Gem & Jewelry Show*



October 1<sup>st</sup> & 2<sup>nd</sup>, 2005



Raffle for this beautiful pyrite crystals on fluorite from China 8" tall x 8" wide x 4" thick

Westside Community Center  
3534 South 108th Street  
(108th & Grover Streets)  
Omaha, Nebraska

Saturday - 9 a.m. to 6 p.m.  
Sunday - 10 a.m. to 5 p.m.  
Admission: Adults \$4  
Students & Senior Citizens - \$2  
Children 12 and under are free with paying adult

**Nine Dealers Featuring:**

- Finished Jewelry • Rough Rock • Minerals
- Fossils • Beads • Finished Gem Stones
- Equipment & Supplies

For more information on the Nebraska Mineral & Gem Club visit: [www.nerockgem.org](http://www.nerockgem.org)

**Demonstrations:**

- Rock Cutting
- Rock Polishing
- Wire Wrapping
- Bead Making
- Fossil Cleaning

Food Bar Available

Free Parking

Fantastic Door Prizes Drawn Hourly

**ROCK SWAP**

Buy - Sell - Swap

**Rocks - Minerals - Fossils  
Flintknapping - Field Trips**

**Labor Day Weekend  
September 2, 3, 4 & 5, 2005  
Crawford City Park - Crawford, Nebraska**

19<sup>th</sup> Annual Rockswap hosted by the Northwest Nebraska Rock Club  
7<sup>th</sup> Annual Fairburn Agate Collectors Gathering  
Indoor display area available inside old Fish Hatchery Building  
\$50 Viewers' Choice Award for best display

Public Welcome - Open 8 a.m. to 5 p.m.

Daily - Field Trips and Flintknapping Demonstrations

Saturday - 2 p.m. Roger Clark Presentation

- 6 p.m. Swapper's potluck supper at Old West Trail Rodeo Building.

- 7 p.m. Auction following supper

For more information, contact:  
Wade Beins • Box 569 • Chadron, NE 69337  
(308) 432-8950 or email: [crawfordswap@hotmail.com](mailto:crawfordswap@hotmail.com)  
or Mike Brost • (308) 668-2511

NOT RESPONSIBLE FOR LOSS OR ACCIDENTS

**NOTICE**

Persons making sales at the ROCK SWAP are responsible to collect Nebraska Sales Tax (7%) and turn over tax and duplicate sales slips to N. W. Nebraska Rock Club Treasurer. Persons showing a current Nebraska Sales Tax Permit may elect to collect and pay sales tax.

## 2005 ELECTED OFFICERS

President	James Marburger	332 Locust	Hickman, NE	68372	402	792-2348
1 <sup>st</sup> Vice Pres.	Pat Akins, Jr.	5017 N. 6 <sup>th</sup> St.	Lincoln, NE	68521		477-1322
2 <sup>nd</sup> Vice Pres.	Roger Pittard	1013 Road K	Geneva, NE	68361	402	759-4623
Treasurer	Vera Lyman	420 N. 56th St.	Lincoln, NE	68504		464-6089
Secretary	Sharon Marburger	332 Locust	Hickman, NE	68372	402	792-2348
Board Member	James Atkins	3028 S. 35th St.	Lincoln, NE	68506		483-1610
Board Member	John Harrison	330 Locust	Hickman, NE	68372	402	792-2337
Board Member	Judy Reilly	4050 Worthington Ave	Lincoln, NE	68502		421-3064
Board Member	Charles Wooldridge	6115 Huntington St.	Lincoln, NE	68507		325-8849

### Nominating Committee

3 years	John Harrison Susan Esquivel
2 years	Mary Pittard Phyllis Parks
1 year	Amy Dexter-Guy Edward Ridge

Chairman: Immediate Past-President Susan McMahan

### Long-Range Planning & By-Laws Committee

3 years	Daniel Dexter-Guy Phyllis Parks
2 years	Susan Taylor Edward Ridge
1 year	Vera M. Lyman Roger K. Pabian

### Standing Committees

Education /Librarian:	Roger Pabian	MWF Liaison:	Vera Lyman
Field Trips:	Pat Akins, Coordinator	Scholarship:	Vera Lyman
Historian:	Sharon Marburger	Christmas Party:	Edward Ridge
Membership Record:	Edward Ridge	2005 Show:	John E. Harrison
Programs:	David Heffelbower	2006 Show:	Patrick Akins, Jr.
Property:	Pat Akins, Jr. & James Marburger	2005 Swap:	Roger Pittard
Youth Activities:	New Committee in place	2006 Swap:	
Refreshments/Door Prizes:	Judy Reilly		
Housing Committee:	Susy McMahan, Pat Akins, Charles Wooldridge & Vera Lyman		
Auditing Committee:	John Harrison, Roger Pabian & James Marburger		
Geology Day Coordinator:	2nd Vice President		

L. G. M. C. web address—courtesy of Jim Atkins:

<http://incolor.inetnebr.com/jna/gemclub/lgmc.htm>

### Your PICK & SHOVEL Staff

<b>Publisher:</b>	Lincoln Gem & Mineral Club, Inc., P.O. Box 5342, Lincoln, NE 68505-0342
<b>Editor:</b>	<b>Judy Reilly</b> 421-3064 4050 Worthington Ave., Lincoln, NE 68502 Email: <a href="mailto:jshannonreilly@aol.com">jshannonreilly@aol.com</a>
Circulation:	Phyllis N. Parks 476-6798
Business Reporter:	Vera Lyman 464-6089
News Reporters:	All Club Members

The *PICK & SHOVEL* is the official publication of the Lincoln Gem & Mineral Club, Lincoln, Nebraska. Articles and items appearing within may be reproduced in other club bulletins, provided proper credit is given to the *PICK & SHOVEL* and the author and that a reprint of the bulletin is sent to the editor of the *PICK & SHOVEL*.

The purpose of this corporation shall be to study, promote an interest in, and disseminate knowledge of lapidary and various Earth Sciences including but not necessarily limited to geology, paleontology and mineralogy. It shall be a particular purpose of the corporation to provide education in these fields to its members and the general public, especially to youth and student groups.

## J. J. & L. ROCKS and MINERALS

COME SEE US FOR YOUR ROUGH NEED'S

GEMS - CABS - SLABS - MOUNTINGS  
STERLING SILVER - GOLD FILLED - 14K GOLD  
SILVER SUPPLIES - TOOLS - MACHINERY - NEW AND USED  
CUSTOM SERVICES FOR SLABS, FLAT LAPPING, AND CABOCHONS

STARTING OUR 30<sup>th</sup> YEAR

330 LOCUST  
HICKMAN, NE 68372-0068

PHONE  
402-792-2337

"PROVIDING SUPPLIES FOR THE NOVICE TO THE DISCRIMINATING ROCKHOUND"  
Please Call for Appointment

LINCOLN GEM & MINERAL CLUB  
hosts our

48<sup>th</sup> Annual Show  
at

PERSHING CENTER  
226 Centennial Mall South

\*\*\* March 25 - 26, 2006 \*\*\*

Show Chairman - Patrick Akins, Jr.

Advertising by rock-hobby business or interest is permitted with the approval of the Board. The rate now set at \$15.00 per full page; \$7.50 per ½ page; \$5.00 per 1/3 page; and \$3.75 per 1/4 page (min) per issue, paid in advance. These ads will be placed through the bulletin as space permits.

Subscription to the Pick & Shovel is \$10.00 per year mailed.

Dues to Lincoln Gem & Mineral Club are as follows:

Adults (age 16 and over) \$10 per year Juniors (age 12 to 16) \$2 per year

Family Membership (Couple, resident children under age 16) \$22 per year

New memberships must be approved by the Board, after the applicant attends at least one meeting of the club and pays the above dues plus a \$5 registration fee.

Meetings: Fourth Thursday, Sept. through May except December & January to be announced. Held at Antelope Park Indoor Shelter, near 30<sup>th</sup> and Sumner, next to the Veterans Memorial and the children's playground.