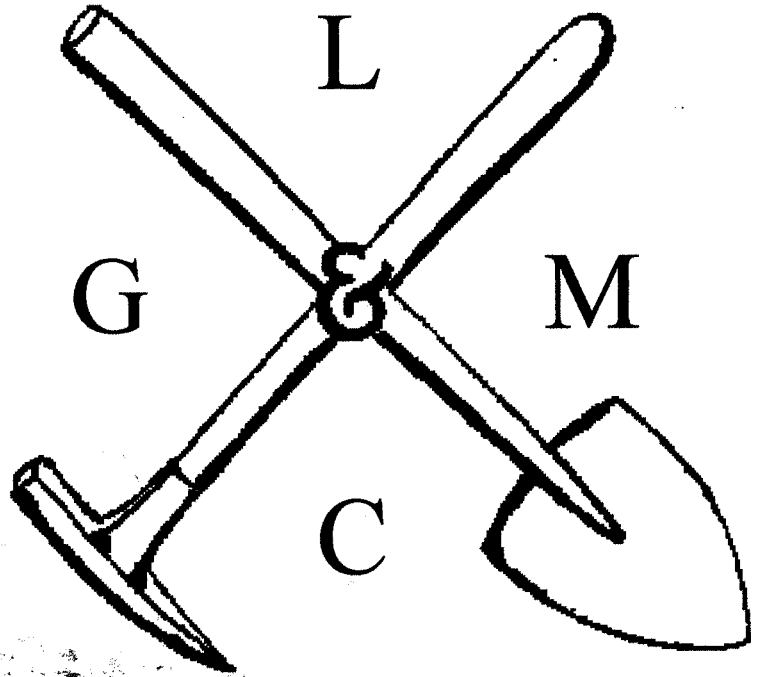


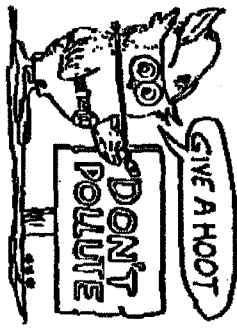
THE PICK & SHOVEL

December 2004



OFFICIAL PUBLICATION OF
LINCOLN GEM & MINERAL CLUB

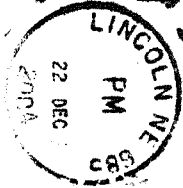
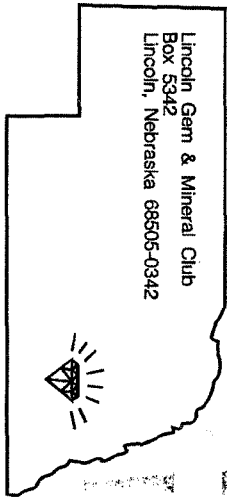
LINCOLN, NEBRASKA



H. E. L. P.
Help Eliminate Litter Please

Mail Exchange Bulletins To:

Lincoln Gem & Mineral Club
Box 5342
Lincoln, Nebraska 68505-0342



Associated with

Edward Ridge
2507 A St.
Lincoln, NE 68502
|||||

68502+1840 05

CLUB EVENTS

- Jan.** 5 Board Meeting, Kinko's, 48th& Vine, 7PM
22 Swap, Antelope Park Shelter, 1-5PM.
Pizza Party following SWAP, General Meeting at 7PM. (see page 8).
- Feb.** 2 Board Meeting, Kinko's, 48th&Vine, 7PM
13 Geology Day, Pioneers Park, 1-4 PM
24 General Meeting, Antelope Park, 7PM
- Mar.** 2 Board Meeting, Kinko's, 48th&Vine, 7 PM
24 General Meeting, Antelope Park, 7PM
- Apr.** 6 Board Meeting, Kinko's, 48th&Vine, 7 PM
9-10 LGMC Annual Show, Pershing Auditorium
28 General Meeting, Antelope Park, 7 PM
- May** 4 Board Meeting, Kinko's, 48th & Vine, 7PM
26 General Meeting, Antelope Park, 7 PM
- July** 17 Grinding Party, Pioneers Park 1-4PM

Recap of November Meeting

Program: Dave Heffelbower brought a very interesting film about Lechequilla Caves.

Election of 2005 Officers

Door Prizes provided by Ed Ridge and Judy Reilly

Recap of December Meeting

Short Meeting and Presentation of 2005 Officers:

President: James Marburger

First Vice President: Pat Akins, Jr.

Second Vice President: Roger Pittard

Secretary: Sharon Marburger

Treasurer: Vera Lyman

Board of Directors: James Atkins, John Harrison, Judy Reilly, Charles Wooldridge

Christmas Feast: Thanks to all who participated in the delicious pot luck. Thanks to Vera for her work in bringing the fried chicken (provided by the club) and setting up the buffet. Thanks to Ed Ridge for bringing the Christmas Decorations. Everyone enjoyed the food and the company!

Program: Fun and games...see page 2.

January Meeting

Program: Presented by David Heffelbower

Door Prizes: Please bring an item or 2 and give them to Judy or Ed so we can build up a stash. We'll use about eight at every meeting.



PRESIDENT'S MESSAGE

It is time to look back at what has been accomplished during the past year. We have met new people, built on friendships, and received many blessings. We all need to remember that this Club belongs to us all, and YOUR participation is necessary for the Club to be successful.

We need to set goals for the coming year. We have a good start on 2005, starting with the Rock Swap on January 22. Our new 2nd Vice President, Roger Pittard, is in charge of planning the Swap, so your offers to assist him will be appreciated. Also be prepared to have him ask for your help with Geology Day on February 13. Ideas for field trips and club activities are needed. We need to expand our Juniors program, starting with a volunteer for leader. Ideas should be passed on to Judy Reilly, who is heading the steering committee. I am still looking for a volunteer to take over the Historian duties. We need to work to make sure our April Show is a success.

The Club has received several donations of fluorescent specimens for the black light display. If you would like to donate some nice specimens, contact me or Pat Akins.

I look forward to seeing you all at the Rock Swap and general meeting in January. Come meet your new Club officers and board members.

Sharon and I want to wish you a safe and happy holiday season.

Rock on!

Jim Marburger

TIME FOR DUES AGAIN

It's that time again! LGMC dues are payable by January 1, 2004. Dues will be accepted at any meeting prior to January 31 or by mail. Payment can be sent to: Lincoln Gem & Mineral Club, PO Box 5342, Lincoln, NE. 68505. Dues are \$10 per adult (age 16 and over), \$2 per junior (age 12-16), and \$22 per family (husband, wife & resident children under age 16). Cost of Gem Palette, the State Association Publication (four issues/year) is \$5 per household. Any member not paying 2004 dues before January 31 will be assessed a \$5 reinstatement fee. Don't let your membership lapse! We are all needed to make the club a success!



*Merry
Christmas!*

WHAT'S THE BUZZ? by Judy Reilly



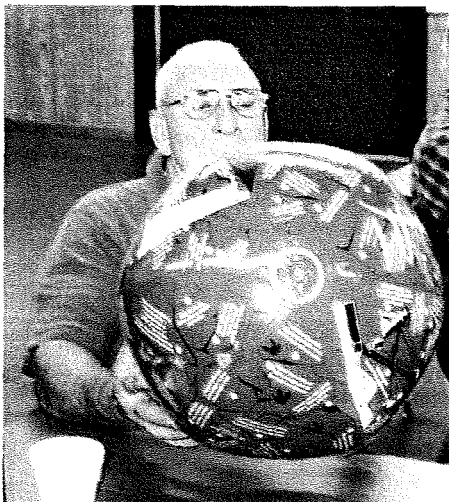
This newsletter is smaller than usual because my computer "caught a cold" or something. I'm babying it enough to get the bare necessities printed so we have a December newsletter. The January issue will be bigger..

I want to thank everyone who has contributed articles for the Pick & Shovel throughout this past year. There is really a lot of writing talent in this group. But talent is not the most important thing. Willingness to share your experiences is all that is needed. Research articles are always very interesting but field trip reports and book reviews can be just as educational and are always fun to read. I encourage each of you to write a "little something" for the club bulletin. It will be rewarding to you as well as all of the club members who read it.

The Junior Program Steering Committee is working towards our goal of having a junior-oriented meeting or program by the April meeting. In searching for ideas for younger rockhounds, I came across a "Rock Knowledge" game. I purchased the game which consists of an inflatable ball covered with questions about rocks. The questions were supposedly geared for 5th and 6th graders, but I was stumped by more than one. I decided to give the game a "trial run" at our Christmas party. The ball was tossed from person to person and they answered the question under their left thumb. There were some pretty funny moments, like when I threw the ball and almost knocked Phyllis's coffee out of her hand. Luckily, she had a good grip on the cup and didn't spill a drop. Also available to buy are balls with the topics of fossils, minerals and dinosaurs. The "Juniors Steering Committee" will look into purchasing these educational games as well. It really was a fun party game (but better in a place with higher ceilings!)

Another game played at the Christmas party was "Rock Bingo". Vera Lyman made this clever game years ago and Vera was the "rock number caller." We had prizes for both games (rocks of course) which were donated by club members. Pictures below from the Christmas party were taken by Susy McMahan. Thanks Susy!

I hope you all have a terrific holiday season. Merry Christmas!
Judy



Top row: Left, member Annette Gifford and her granddaughter get in line for the buffet. Right, Judy Reilly and Vera Lyman enjoy the meal.



Bottom row: Left, Alden Stewart and right, Susy McMahan, play the "Rock Knowledge" game. The object was to catch the ball and correctly answer the question under ones left thumb.

LINCOLN GEM & MINERAL CLUB, INC. – BOARD OF DIRECTORS – November 3, 2004

Kinkos, 48th and Vine

President Jim Marburger called the meeting to order at 7:06 p.m. Present were Jim Marburger, Pat Akins, Sharon Marburger, Vera Lyman, John Harrison, and Jim Atkins.

The minutes of the October meeting were handed out. John Harrison moved to accept the minutes as printed, Jim Atkins 2nd. Motion carried. The motion by Pat Akins to accept the Treasurer's report was 2nd by Jim Atkins. Motion carried.

OLD BUSINESS: A thank you note for endowment fund money was received from the Midwest Federation.

John Harrison made a motion that the proceeds from the October meeting silent auction be divided equally between the Special Lapidary Class fund and the Midwest Federation Endowment fund. 2nd by Pat Akins, motion carried.

The prize awarded and refused by the State Fair winner of the lapidary arts division, will be rolled over to the next State Fair winner, as requested by this year's winner.

Discussion regarding the January Rock Swap ensued. The Swap will be held January 22, 2005 at the Antelope Park Shelter from 1:00 – 5:00 p.m. The doors will open at noon for setup. A pizza supper follows at 6:00, with the general meeting starting at 7:30. There will be silent auctions all afternoon and evening.

NEW BUSINESS: Six new membership applications were presented to the Board. On a motion from Pat Akins to accept the applicants as new member, with a 2nd by John Harrison, the Board unanimously approved memberships for Lonnie and Susie Esquivel; John and Patricia Hardesty; Richard Peterson; and Don Ward.

Beginning in 2006, Pershing Center will assess a 25 cent fee per paid admission. This will result in a possible \$1.00 increase in the Show's admission fee.

The next Board meeting will be 7:00 p.m., Wednesday, December 1 at Kinkos.

Motion by Pat Akins to adjourn, 2nd by Jim Atkins. Meeting adjourned at 7:52 p.m.

Respectfully Submitted,

Sharon Marburger

GENERAL MEETING – November 18, 2004, Antelope Park Shelter

The meeting was called to order at 7:22 p.m. by First Vice President Pat Akins. Sixteen members and one guest, Mike Reilly, were present.

Jim Atkins moved to accept the minutes of the October meeting as printed, 2nd by David Heffelbower. Motion carried. The motion to accept the treasurer's report was received by Phyllis Parks, 2nd by David Heffelbower. Motion carried.

Judy Reilly presented a typed plan and suggestions from the juniors steering committee. The committee continues to accept ideas for activities to attract and keep young club members. They plan to contact youth groups, hold a meeting in the spring, and determine the number of meetings according to interest. Great start, Committee!

The Christmas Party will be held at 5:00 p.m. on December 5 at the Antelope Park shelter. As usual, the Club will provide the meat and the members bring a hot dish and salad or dessert. Those who wish to participate in the gift exchange should bring a small, wrapped hobby-related gift. As the holidays are for the kids, bring some!

The Rock Swap is planned for January 22, 2005 from 1:00 to 5:00. There will be a pizza party after the swap, followed by the general meeting. Bring items for the silent auction.

Elections were held. Susan Taylor moved to accept by acclamation the offices of President, 1st Vice President, 2nd Vice President, Secretary, and Treasurer. Mary Pittard 2nd the motion. Motion carried. The officers are as follows: President – Jim Marburger; First Vice President – Pat Akins; Second Vice President – Roger Pittard; Secretary – Sharon Marburger; Treasurer – Vera Lyman. The 2005 Board of Directors, by ballot, are Jim Atkins, Judy Reilly, John Harrison, and Charles Wooldridge. Susan Taylor moved and David Heffelbower 2nd the nomination of Susan Esquivel and John Harrison as replacement Nominating Committee members. They were approved by acclamation.

Meeting adjourned at 7:38 on a motion by Roger Pabian, 2nd by Jim Atkins. The program was presented by David Heffelbower – a video of Lecheguilla Cave. The video was very interesting. Thank you for sharing it, David.

Respectfully submitted,

Sharon Marburger

(Minutes were approved at the December meeting as was the financial report which is not included in this issue.)

From The MWF Newsletter, December, 2004

GeoBlem

“Growing Pains: *T-Rex* was a Teenage Giant”

by Judith Washburn, Acting Geology Chair

Most teenagers have growing pains, but none probably compared to those of *Tyrannosaurus rex* as it ascended to adulthood more than 65 million years ago, according to a Florida State University (FSU) researcher. From around age 14 to 18, *T-Rex* took on about 70 percent of its adult mass, growing from a one ton carnivorous lizard to a bone-crushing, six ton dinosaur eating machine with few rivals in the prehistoric kingdom, according to FSU biologist Gregory Erickson. At the peak of this spurt, *T-Rex* grew more than 4.5 pounds a day.

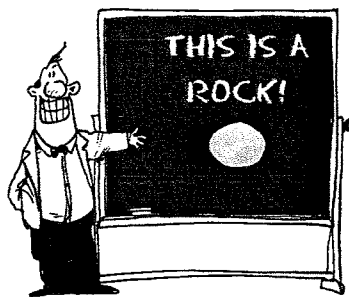
Erickson and his team of paleontologists are the first to establish an accurate picture of how *T-Rex* accelerated its growth over a relatively few years to become gargantuan while earlier, smaller relatives had much slower growth. The scientists did this by counting growth rings in the bones of *T-Rex* and other members of its family and calculating the corresponding body size by measuring the circumference of the femur. *T-Rex*'s growth rate is comparable to that of the modern day elephant. But while elephants have a lifespan of more than 70 years, *T-Rex* lived no more than 30 years.

“We now know that *T-Rex* lived fast and died young,” said Erickson. Erickson and Peter Makovicky, dinosaur curator at The Field Museum and a co-author of the study, will soon join with other team members at the Chicago museum to announce their findings. Erickson has spent much of his career exploring how some dinosaurs got so big. The first dinosaurs to roam the Earth some 225 million years ago were about a yard long and weighed between 50 to 100 pounds, he said. The giants, such as *T-Rex* and *A. sarcophagus*, came along about 150 million years later.

Almost every child asks: How did dinosaurs get so big? “That has remained one of the great mysteries in paleontology,” Erickson said, “Here we cracked the code for one family of dinosaurs, the *Tyrannosauridae*.” Like trees, dinosaur bones are marked by growth rings, with a new one developing every year. But there was one giant obstacle to counting the rings. Most of the big, meat-eating dinosaurs’ bones remodeled themselves as they grew and become hollow, erasing much of the growth record.

A possible solution to this dilemma came to Erickson about four years ago while examining Sue. He noticed that Sue’s rib bones were solid. Further investigation revealed that the fibula (a leg bone) and some hipbones were also solid and retained the full compliment of growth rings. Erickson assembled a team of researchers from the American Museum of Natural History, The Field Museum, Canada’s Royal Tyrrell Museum of Paleontology, Stanford University, and the University of Iowa. They examined cross sections of bones from 20 *Tyrannosaurs* that ranged from 2 to 28 years of age and establish *T-Rex*’s accelerated growth rate during its teenage years. The researchers verified their results by comparing the dinosaurs’ growth rings to those of modern-day alligators and lizards, whose rings are similar.

“Ten years ago such research may have been impossible,” Erickson said. “Museums wouldn’t have allowed scientists to cut away at *T-Rex* bones to examine growth rings because there were only a few good specimens. But a flurry of discoveries in the past decade—there are now more than 30 known *T-Rex* specimens worldwide—have given museums a greater comfort level and allowed more invasive scientific research.”



Rockhounds in the Community

The first week of November, I was honored to talk with the Cub Scouts of Pack 64, Den 4 at the home of Todd Harlan in Hickman, NE. In attendance were ten Pack members and six parents. I was introduced as Mr. Jim Marburger – WOW—Mr... I flashed back to student teaching in 1974 at Lincoln High...I was in charge !!! Well, I was in charge of presenting a quick 30 minute crash course in geology and rock collecting for their merit badge requirement.

I started off with a quick trip to sedimentary land by wind and water. Then off to the fire of mother earth. Oh, then on to the depth of metamorphic rocks. To my surprise, these young moldable minds were way ahead of me. I guess I gave them a quick review of science classes in school and most had read the handbook before the meeting. Questions bounced back and forth, challenging us to more discussions.

Most of the scouts had pockets full of items to be identified. I had samples that were passed around, and the eyes that were full of excitement grew moreso. By this time most of the parents in attendance were also captivated. The Den leader, Todd, is a local farmer and had some great samples from his farm. One in particular was quite unique. When it was brought out, the scouts offered several guesses, but no one knew what it really was. The specimen was a fossil mammoth tooth. The tooth was 98% complete and was found in a hillside southwest of Hickman. All eyes were on it. I estimated that it would fetch \$200 to \$400 at the shows. WOW!!!!!!!!!!!!!!!!!!!!!! Todd thought that was better than farming prices and all of the pack wanted to go camping and rock- fossil- collecting.

By now my 30 minute presentation was done....some 90 minutes later. Before I made my exit, each of the scouts received specimens of obsidian, horn coral, petrified wood, agate, apache tears, mica, picture sandstone, and some tumbled stones. They were also invited to the swap and show in 2005. Everyone in attendance wanted more but time did not allow. Many thanks from them. Now almost a month later, Todd says they are all still very excited about the presentation and they are finishing up the merit badge requirement.

By James Marburger

Regional Federation Shows

Southeast

December 10-12, 2004, Norcross, GA.

California

June 10-12, 2005, Roseville, CA.

Rocky Mountain

June, 2005, Colorado Springs, CO.

Eastern

March 19-20, 2005, Athens, PA.

Northwest

August 5-7, 2005, Albany, Oregon

Midwest/ AFMS

August 16-21, 2005, St. Louis, MO

Standing Committees, 2005

President Marburger has confirmed the following LGMC Standing Committee Chairmen:

Library- Roger Pabian

Field Trips- Pat Akins, Jr.

Historian- Marburgers (interim)

Membership- Ed Ridge

Programs- David Heffelbower

Youth Activities-

Door Prizes/Refreshments- Judy Reilly

Auditing Committee- Roger, Pabian, John Harrison, James Marburger

Christmas Party, 2005- Ed Ridge

2006 Show- Pat Akins, Jr.

2006 SWAP- David Heffelbower

Newsletter Editor- Judy Reilly

Newsletter Circulation- Phyllis Parks

Show Committees, 2005

John Harrison, 2005 Show Chairman, has confirmed the following subcommittee chairmen:

Floor- Francis Belohlavy

Dealers- Pat Akins, Jr.

Advertising- Phil and Patty Rose

Educational Programs- Roger Pittard

Show Programs (Handouts)- Judy Reilly

Displays- Roger Pabian

Club Information Booth- Ed Ridge

Ribbons & Recognition- Alden and Marilyn Stewart

Special Features- James and Sharon Marburger

Silent Auction- Betty White

Demonstrators- David Heffelbower

Security- Vera Lyman

Tickets- Jim Atkins

**Tips For Readers**

Silk thread is very strong and is great for stringing but it lacks abrasion resistance. Nylon thread has abrasion resistance, but is not as strong as silk and stretches with the tension required for beading. The solution: Use silk for non-abrasive materials such as mother pearl, turquoise, pearls and lapis/ Use nylon for abrasive materials such as onyx, metal beads, amethyst and rose quartz.

To eliminate stretching after you have carefully knotted a strand with nylon, suspend the cord on a doorknob (several loops are OK), then hang a pair of pliers from the loops and leave overnight. The nylon is now pre-stretched and will not become loose after being strung.

Soaping or waxing the thread keeps it from tangling. Placing a moistened paper towel on your flat surface while working is helpful. To remove unwanted beads from a row, break them with a pair of all-purpose pliers.

(from The Pegmatite 2/97, via The Mountain Gem 4/97 via The Pebble Pusher 4/01 via Leaverite News 5/02 via Achates 8/02)

**Subject One Liners**

Q. What do Eskimos get from sitting on the ice too long?

A. *Polaroids*

Q. What lies at the bottom of the ocean and twitches

A. A nervous wreck

Q. What do you call Santa's helpers?

A. *Subordinate Clauses*

Q. What do you get from a pampered cow?

A. *Spoiled milk*

Q. What do you get when you cross a snowman with a vampire?

A. *Frostbite*

Q. What's the difference between roast beef and pea soup?

A. *Anyone can roast beef*

(from The Flint Gemstones 8/02 via The Trilobite 11/02, edited for space)

Lincoln Gem and Mineral Club

27th Annual

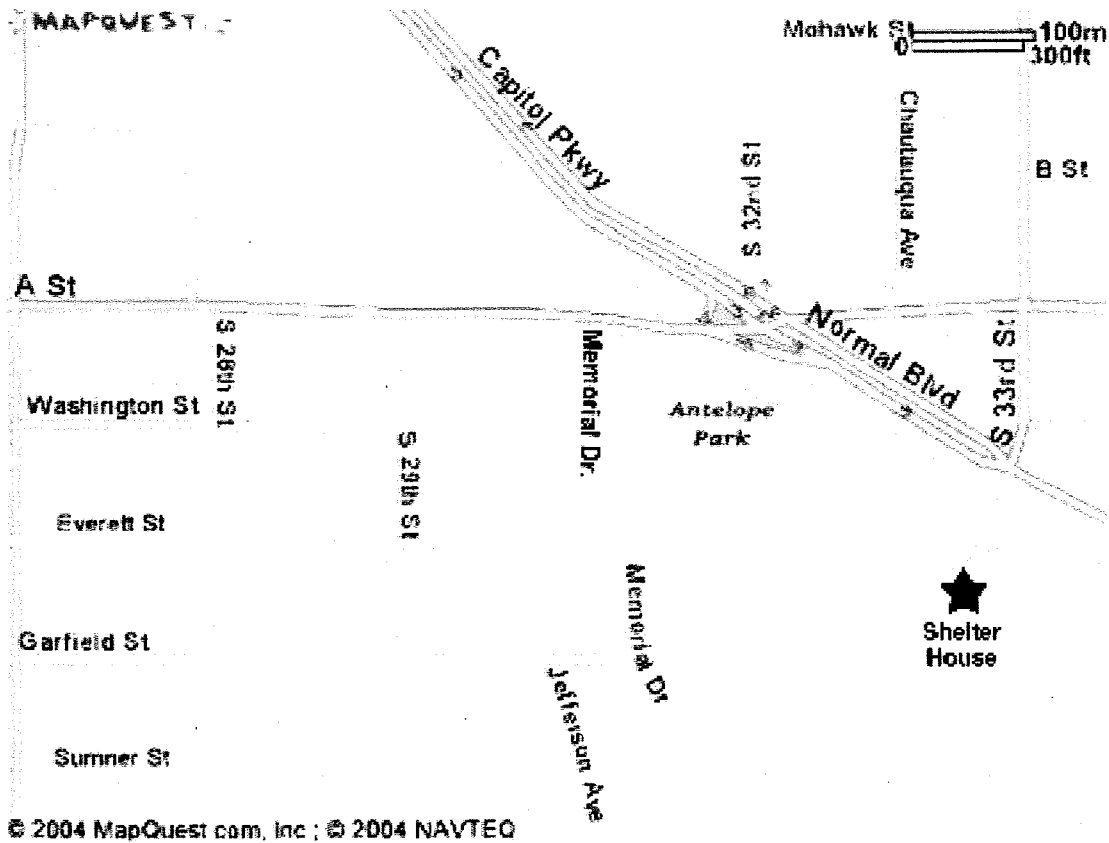
Gem and Mineral Swap

Saturday, January 22, 2005

1:00 p.m. to 5:00 p.m.

Antelope Park Shelter House

(Same place as last year)



All buyers must use Swapper Bucks which are available at the door.

Buy, Sell or trade: Rocks, Minerals, Fossils, Finished Gemstones, Rough Gemstones, Crystals, Beads, Books, Equipment, Supplies and any other gem and mineral related materials.

Admission: Swappers with tables should provide materials for silent auctions. Proceeds go to the Lincoln Gem and Mineral Club's Lapidary Education Fund.

The swap will be followed by the general meeting of the Lincoln Gem and Mineral Club at 7:30 p.m. Visitors are welcome to attend both events.

2004 ELECTED OFFICERS

President	James Marburger	332 Locust	Hickman, NE	68372	792-2348
1 st Vice Pres.	Pat Akins, Jr.	5017 N. 6 th St.	Lincoln, NE	68521	477-1322
2 nd Vice Pres.	Roger K. Pabian	5301 X Street	Lincoln, NE	68504	465-0144
Treasurer	Vera Lyman	420 N. 56 th St.	Lincoln, NE	68504	464-6089
Secretary	Sharon Marburger	332 Locust	Hickman, NE	68372	792-2348
Board Member	David Heffelbower	1819 Washington St.	Lincoln, NE	68502	cell 890-2794
Board Member	James Atkins	3028 S. 35 th St.	Lincoln, NE	68506	483-1610
Board Member	John Harrison	330 Locust	Hickman, NE	68372	792-2337
Board Member	Judy Reilly	4050 Worthington Ave	Lincoln, NE	68502	421-3064

Nominating Committee

3 years	Mary Pittard Phyllis N Parks
2 years	Amy Dexter-Guy Edward Ridge
1 year	John Harrison Aulden Stewart

Chairman: Immediate Past-President Susan McMahan

Long-Range Planning & By-Laws Committee

3 years	Daniel Dexter-Guy Phyllis Parks
2 years	Susan Taylor Edward Ridge
1 year	Vera M. Lyman Roger K. Pabian

Standing Committees

Education /Librarian:	Roger Pabian	MWF Liaison:	Vera Lyman
Field Trips:	Pat Akins, Coordinator	Scholarship:	Vera Lyman
Historian:	Susy McMahan	Christmas Party:	Edward Ridge
Membership Record:	Edward Ridge	2005 Show:	John E. Harrison
Programs:	David Heffelbower	2004 Show:	Roger Pabian
Property:	Pat Akins, Jr. & James Marburger	2005 Swap:	Roger Pittard
Youth Activities:	Kay Jurgens & Susy McMahan	2004 Swap:	Pat Akins, Jr.
Refreshments/Door Prizes:	Judy Reilly		
Housing Committee:	Susy McMahan, Pat Akins, Charles Wooldridge & Vera Lyman		
Auditing Committee:	John Harrison, Roger Pabian & James Marburger		
Geology Day Coordinator:	2nd Vice President		

L. G. M. C. web address—courtesy of Jim Atkins:

<http://incolor.inetnebr.com/jna/gemclub/lgmc.htm>

Your PICK & SHOVEL Staff

Publisher:	Lincoln Gem & Mineral Club, Inc., P.O. Box 5342, Lincoln, NE 68505-0342
Editor:	Judy Reilly 421-3064 4050 Worthington Ave., Lincoln, NE 68502 Email: jshannonreilly@aol.com
Circulation:	Phyllis N. Parks 476-6798
Business Reporter:	Vera Lyman 464-6089
News Reporters:	All Club Members

The *PICK & SHOVEL* is the official publication of the Lincoln Gem & Mineral Club, Lincoln, Nebraska. Articles and items appearing within may be reproduced in other club bulletins, provided proper credit is given to the *PICK & SHOVEL* and the author and that a reprint of the bulletin is sent to the editor of the *PICK & SHOVEL*.

The purpose of this corporation shall be to study, promote an interest in, and disseminate knowledge of lapidary and various Earth Sciences including but not necessarily limited to geology, paleontology and mineralogy. It shall be a particular purpose of the corporation to provide education in these fields to its members and the general public, especially to youth and student groups.

J. J. & L. ROCKS and MINERALS

COME SEE US FOR YOUR ROUGH NEED'S

GEMS - CABS - SLABS - MOUNTINGS
STERLING SILVER - GOLD FILLED - 14K GOLD
SILVER SUPPLIES - TOOLS - MACHINERY - NEW AND USED
CUSTOM SERVICES FOR SLABS, FLAT LAPPING, AND CABOCHONS

STARTING OUR 29th YEAR

330 LOCUST
HICKMAN, NE 68372-0068

PHONE
402-792-2337

"PROVIDING SUPPLIES FOR THE NOVICE TO THE DISCRIMINATING ROCKHOUND"
Please Call for Appointment

LINCOLN GEM & MINERAL CLUB
hosts our

47th Annual Show
at

PERSHING CENTER
226 Centennial Mall South

*** April 9 - 10, 2005 ***

Note: Dates changed due to Easter.

Show Chairman - John Harrison

Advertising by rock-hobby business or interest is permitted with the approval of the Board. The rate now set at \$15.00 per full page; \$7.50 per ½ page; \$5.00 per 1/3 page; and \$3.75 per 1/4 page (min) per issue, paid in advance. These ads will be placed through the bulletin as space permits.

Subscription to the Pick & Shovel is \$10.00 per year mailed.

Dues to Lincoln Gem & Mineral Club are as follows:

Adults (age 16 and over) \$10 per year Juniors (age 12 to 16) \$2 per year

Family Membership (Couple, resident children under age 16) \$22 per year

New memberships must be approved by the Board, after the applicant attends at least one meeting of the club and pays the above dues plus a \$5 registration fee.

Meetings: Fourth Thursday, Sept. through May except December & January to be announced. Held at Antelope Park Indoor Shelter, near 30th and Sumner, next to the Veterans Memorial and the children's playground.