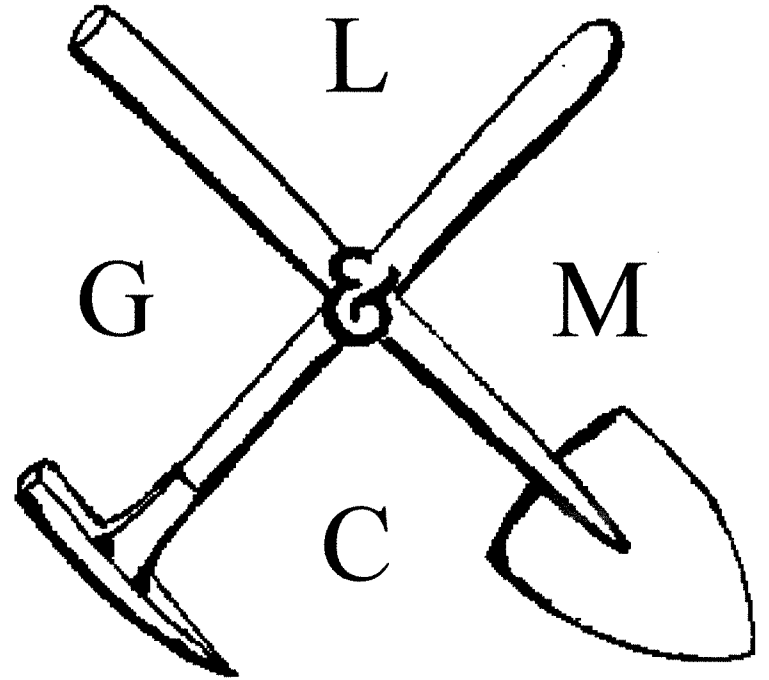


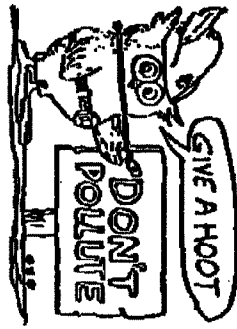
THE PICK & SHOVEL

OCTOBER 2004



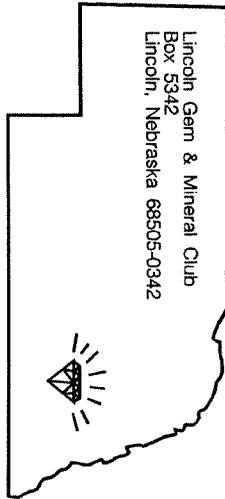
OFFICIAL PUBLICATION OF
LINCOLN GEM & MINERAL CLUB

LINCOLN, NEBRASKA



Mail Exchange Bulletins To:

Lincoln Gem & Mineral Club
Box 5342
Lincoln, Nebraska 68505-0342



H. E. L. P.

Help Eliminate Litter Please



Associated with



CLUB EVENTS

CALENDAR

Oct. 28 General Meeting, Antelope Park Shelter, **Supper 6:30 PM, meeting 7:30 PM**

Nov. 3 Board Mtg, 7 PM, Kinko's, 48 & Vine
18 General Meeting, 7 PM, Antelope Park Shelter, **Election of Officers**

Dec. 1 Board Mtg, 7PM, Kinko's, 48 & Vine
5 **SUNDAY- 5-9 PM Christmas Party**
Brief General Meeting

Secretary's Report of September 23 Meeting

Meeting was not called to order and no business was conducted because quorum was not met. Twelve members were present.

Roger Pabian provided the program on the history of lapidary.

Beautiful mozarkite and agates were offered for door prizes. Everyone in attendance had the opportunity to select a prize.

Finger foods were brought and enjoyed.

Thanks to all who participated.

Respectfully submitted,

Sharon Marburger

Secretary

October Meeting

Reunion and Halloween Party: (see p. 3)

Program: "Minerals of Canada" by Eric Fritsch

Silent Auction: Bring hobby-related items to auction off with proceeds to the LGMC Lapidary Fund and MWF Endowment Fund

Door Prizes: Donated by David Heffelbower

Display Material: Favorite collection pieces



PRESIDENT'S MESSAGE

September has come and gone and we are well on our way to the October reunion meeting, scheduled for **OCTOBER 28th**. Plan to attend this meeting. We will have friends from the past and new guests to introduce. There will be food and entertainment for all. Bring hobby related treasures - found, created, or produced by you - to display, so they can be enjoyed by all. Our club has come a long way and it has a great growth potential. This is **OUR** club - let's **ALL** be active members. I look forward to seeing you at the Reunion.

Our September meeting was poorly attended so no formal meeting was held. We have extra club business to do this month, from the carry over, but I will try to keep it short so the educational and informative portion of the meeting can progress.

Rock, gem and mineral shows in the area have been going strong with good attendance. This proves that the hobby has a strong base. We can all share our many-faceted experiences of the hobby with others. Yes, even **YOU** can "create" a new rock hound, or mineral buff, or fossil friend. Go forth and inspire.

Rock on!

James Marburger

November Cub Elections

The nominating committee, headed by Jim Atkins has presented the following as candidates for 2005:

President: James Marburger

1st VP: Pat Akins, Jr.

2nd VP: Roger Pittard

Secretary: Sharon Marburger

Treasurer: Vera Lyman

Board Members:

Jim Atkins

Susy McMahan

Judy Reilly

Charles Wooldridge

John Harrison

David Heffelbower

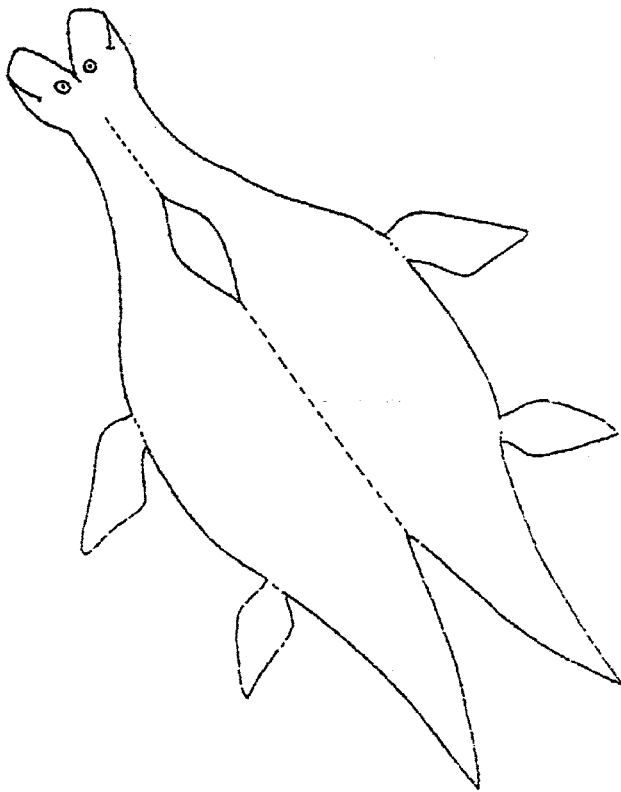
For Juniors

Make a Stand-up Plesiosaur

(From www.sharktoothhill.com 8/11/99 via unknown exchange bulletin. Educational, non-commercial use only.)

This is a fun project for party decorations or as an activity for young future paleontologists. Back in 1964, members of The LGMC had a great opportunity to get in on a real Plesiosaur dig (see p. 6) (P&S EDITOR)

- Make a copy of the Plesiosaur on this page. You can enlarge it if you want.
 - Color the Plesiosaur.
 - Cut the Plesiosaur along the solid lines.
 - Fold the body together at the dotted lines.
 - Glue together.
 - Fold flippers to outward angles.
- (You could make a whole herd!)



WHAT'S THE BUZZ?

by Judy Reilly



I want to say thanks for all the positive thoughts and wishes during my recent hospitalizations. I am doing MUCH better and hope to see you all at the October meeting.

Speaking of the October meeting, I hope we have a huge turnout because there are a lot of activities planned, not the least of which is great food. (see p. 3) This will be a reunion meeting so I decided to use that as a theme for this newsletter. I hope you enjoy some of the information from years gone by I "dug up" with the help of **Phyllis Parks**.

Please welcome our new member, **Gerald E. Moore** back to the club. Gerald was president of LGMC in 1998. He is sponsored by **John Harrison**. Please add him to your "Who's Who"...2303 South 35th St, Lincoln, NE 68506, 402-489-4184.

Susy McMahan was invited to speak to the 5th graders at North American Martyrs School in the Highlands, October 7. She was contacted by **Sandy Reisdorf**, a 5th grade teacher upon recommendation by a friend. The 5th graders had just finished studying metamorphic and sedimentary rocks but were interested in all aspects of rocks & minerals, especially tumbling stones. Since I had some time off work, I accepted (with some trepidation) Susy's offer to accompany her. The plan was to discuss rock collecting and how to start a collection, including how to tumble their own stones. Each of the students brought an egg carton for their collection and Susy and I handed out baggies of 3 tumbled stones to each student. We also had a handout describing possible themes for collections, labeling, etc. The students loved the pretty stones. We identified the specimens for them (one lucky girl had a tiny Fairburn) and answered their numerous questions about the hobby. Also we had displays of cut stones and rock and mineral collections and a tumbler to examine. Susy explained how to use the tumbler and where to purchase one. We invited the children and parents to visit a club meeting and many expressed interest in coming to the Halloween Party and Silent Auction. I learned that it is really fun to get out there and share our hobby, even if you are a little nervous. Thanks to Susy for the great experience!

Fossil News by Keri Dearborn...From Del Air Bulletin (Dec., 1998 via The Rockfinder, March, 2002)

Paleontologists in Southwestern Saskatchewan, taking a break from unearthing a T-rex skeleton, noticed a "whitish gray mass" sticking out of the ash hillside. What they found was a piece of coprolite 17" long, 5" high and 6" wide. Throughout the mass were fragments of bone. The crushed pieces of bone were jagged and pointed, proving that they passed through the stomach of some meat-eating creature rather rapidly. The only

known carnivorous dinosaur in the area 67 to 65 million years ago large enough to create such a large dung specimen was T-rex. The contents of the coprolite provide evidence that T-rexes were strong enough to crunch bone and help to give us an idea of how its digestive system worked.

And I bet you thought poop was worthless!

In January, 1955, the Lincoln Gem and Mineral Club met for the first time. This month we are calling forth all members, past and present to meet for a "Rockin' Reunion". A buffet supper of bar-b-que pork sandwiches, salads, and beverages will be provided by the Club and a secret benefactor. Desserts will be provided by Club members. Many thanks to Sharon and James Marburger for the great flyers which were sent as invitations. Bring a dessert, haul out those silent auction items, and put that party costume on! See you there!

ROCKIN' REUNION!

fun! fun! fun! fun!

OCTOBER 28, 2004

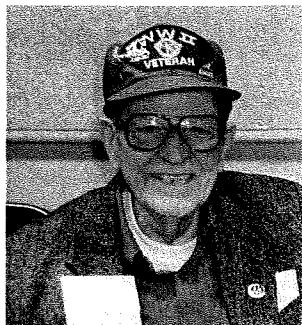
ANTELOPE PARK SHELTER

prizes! **6:30 p.m. food!**

see old friends! make new friends!
Bring a friend!

share your love of the hobby
Bring Your Displays and Specimens

Come dressed as a hobby-related item
fun! Best costume wins a prize! fun!
Most creative wins a prize! fun!



Irl Everett (EVEY)
Club Founder

Sport champions in 1955

- MLB - Brooklyn Dodgers
- NFL - Cleveland Browns
- NBA - Syracuse Nationals
- NHL - Detroit Red Wings
- NCAA-Basketball - San Francisco

Entertainment in 1955

- Best Selling Fiction - Marjorie Morningstar, Herman Wouk
- Best Selling Non-Fiction - Gift from the Sea, Anne Morrow Lindbergh
- Best Picture - Marty, United Artists

In The News In 1955

Hurricane "Diane" claims 184 lives from North Carolina to New England. Rosa Parks refuses to give up her bus seat which leads to a boycott and the courts declaring a bus segregation ordinance unconstitutional. The AFL merges with the CIO, creating the nation's largest labor union. Dr. Jonas Salk discovers a vaccine for polio.

45 YEARS OF PICK & SHOVEO and Reunion Thoughts by A Member of 45 Years!

When our Editor suggested that I might write up a history of the Pick & Shovel for this bulletin I jumped at the chance—then I started thinking about this REUNION and its significance to the club as a whole. Also thought about the possibility that club members would not bother to read it.....**SO I am issuing a challenge to you all. READ WHAT I AM SAYING, THINK ABOUT IT AND TELL ME HOW I AM WRONG!**

What is a Reunion?

Webster's Seventh Edition Collegiate Dictionary, copyright 1971, gives one definition as 'a reuniting of persons after separation'. That could be us at every club meeting—but we want this one to be more special and hope to see people that we haven't seen in a year, two years, or even longer.

NOW for The Pick & Shovel! The first copy rolled off the presses in June of 1960 at the home of Mr. & Mrs Maurice Tracy. (Maurice was our first elected President and Frances was Secretary-Treasurer from 1955 through 1961.) **It was published on an A.B.Dick Duplicator** owned by the club.

Our 2nd Editor was Mrs. Velma Bloyd, still using the Duplicator. She made several additions to an already very impressive publication that had won Francis a 1st place in the MWF Bulletin Editor's Contest. In late 1964 the club purchased a **Rex Bohn M4 Electric Rotary Mimeograph** that increased the quality of our publication immensely. Phyllis started helping to type and proofread stencils and Jim to help draw illustrations.

In 1965 Phyllis became Editor and Publisher with a lot of help from Jim, Velma, Dorothy Engelhart, Marie Carveth and others too numerous to mention. We used a template of The Pick & Shovel Emblem furnished by C. Ray (Pappy) Waddle as well as many of his Letter Guides for headlines, ads, and special notices. We started printing many of our show and swap flyers and used the September Bulletin as our Show Handout Program for several years. In 1968 Phyllis received First Place Award in the 1967 Bulletin Editors Contest which came with the extra duty of being a contest judge for the next two MWF Bulletin Editor's Contests.

In 1969 Norma Miller assumed the title of Editor with Phyllis remaining as Publisher. In the meantime postage had gone from 3 cents to 6 cents per copy mailed and the costs were increasing. We started researching mailing privilege and came up with Bulk Mailing at a lower rate—but we had to mail 200 copies to take advantage of it which meant printing about 100 more than before. We used a special non-profit imprint and permit for some time then went to just straight Bulk Rate.

Evelyn Ulrich became Editor in the 70's and we experimented with Publications Chairman, Circulation Manager and committees to do the mailing.

Vera Lyman became our next editor and we went to an outside publisher. Vera did a wonderful job but with all her other activities she needed a break.

Judy McColery acted as Editor for a short while then David Heffelbower and Francis Belohlavy shared the task until 1986 when we named the Board of Directors as Editor and Vera Lyman as Coordinator.

In 1989 Roger Pabian accepted the challenge and served as Editor through 1992. Great bulletins and the beginning of the Computer Generated copy with date and contents on front cover each month. Very Nice!

In 1993 Phyllis was ready to try coordinating the copy and make use of the word processor she had acquired. Meanwhile publication expense for 200 plus bulletins, time spent on circulation etc had become so extreme that Phyllis asked the Board and the members if she might cut the Bulk Rate Mailing (which had now increased to over \$70.00 per year for the permit) and cut the number mailed to about 100 copies thus eliminating a lot of printing cost while going to First Class Postage and fewer sheets in each bulletin. We went from \$843 in 1992 to under \$300 in 1993. Since then it has leveled off to from \$600 to \$800 per year depending on how many times we go over 1 ounce in weight. Of course we have seen significant increases in 1st class postage from 3 cents in 1960 to 29 cents in 1993 to 37 cents now. In 1994 I went to computer with a great deal of help from son Pete Crawford. Pete set me up with my first computer, became teacher, mentor and frequent rescuer as this 74 year old woman tried to make it into 'The Computer Age'. We kept at it until 2001 when Judy Reilly accepted the job of assistant and gradually took over completely as Editor with Phyllis on circulation.

Now we have Judy who is extremely capable on the computer, enhances our Pick & Shovel with many current digital pictures, is getting more and more input from club members, is enthusiastic and talented. Let's try to keep her encouraged by keeping the copy coming, offering help where needed. Encouragement goes a long ways!

NOW—back to my soap box....I joined Lincoln Gem & Mineral Club, Inc. at the November 1959 meeting at Morrill Hall Auditorium when Irl Everett was President for the second time. I have never been late paying my dues and can safely say that I have not missed more than 10 meetings in 45 years. I have never missed participating in one of our Annual Shows and I do think it is the best CLUB in the world. I enjoy any phase of the hobby but have not cut a stone for possibly 35 years. Collecting and viewing has become my role.

I believe that **COMMUNICATION** is the lifeline of a good and active club, that participation is the key to enjoying and keeping a strong club and active members are happy and attentive members. I believe we get just as much from the club as we are willing to put into it.

I believe that keeping our PICK & SHOVEL as good as it is **IS** the key to keeping LGMC strong.

Contributed by Phyllis Parks

MWF Newsletter, October, 2004**Program Competition-Why?****By Marge Collins**

- Do you like to share what you have learned as a "rockhound"?
- Do you demonstrate at Shows or other events?
- Have you ever prepared a display of minerals, rocks or some other aspect of our hobby?
- Have you presented a program about a special interest at a Club meeting or during a Show?

If the answer to any of these questions is yes, then the next step is to enter Program Competition, because winning programs are available to many new viewers.

You ask, "why bother"?

- 1) Think of how many more clubs will be able to see and learn from your program.
- 2) You will earn recognition for sharing and excellence.
- 3) There are cash awards to defray the expenses of producing a presentation.

Yes, It takes time to prepare a presentation for competition, but you have already done the most important part of the "work". You have a theme, have organized the information, gathered specimens or supplies/equipment. Now all you have to do is record the images and make a script with the information that you want to share.

Digital cameras and computers have made this process easier, but the VHS video or old-fashioned 35mm slides each have their advantages. If need be, ask a fellow Club member or friend to help. In any event, be sure to make the best images possible. "Fuzzy" pictures, whether out of focus or too few pixels, will not give the impression you are hoping for. And when writing a script, remember every professional author has one or more editors. In other words, don't be satisfied with the first draft. Ask someone to read the script back to you. Listen carefully, take notes and then do some re-writes. Word processing makes this process so much easier!

If you are up to the challenge, read the "rules" (MWF Newsletter, Oct 2004, p. 5) and contact the Coordinator for more information. We're looking forward to your entry. And so are the MWF Clubs!

For Scoresheet (shows what the judges consider) and "Tips", send post paid envelope to Competition Coordinator: Marge Collins, 3017 Niles-Buchanan Rd, Buchanan, MI 49107 or email Margaret@qtm.net or call 269-695-4313.

AFMS Newsletter, October, 2004**American Lands Access Association****from Peggy Blickfelt, ALAA President**

"What to do with the American Lands Access Association" was the topic of discussion at a meeting held during the AFMS convention this summer. Much concern was voiced over the inactivity of the organization during the past few years. Those in attendance voted unanimously to start over, reorganize the association and elect new officers and directors. Peggy Blickfelt of Boise, Idaho was elected president.

Peggy has been a director of ALAA since 2002 and a member since 1999. She has been an active rockhound since 1973 and is very actively involved in Bureau of Land Management planning meetings in Idaho. Peggy and her husband, Chris, have been working with BLM to review plans to make sure that rockhounds have access to digging sites on BLM lands. The Blickfelts have taken BLM leaders and members of Congress out on rockhound hunting trips to show these officials what's out there and what rockhounds do. They were very impressed and indicated that they didn't have a clue about the size of our organization and the respect we have for our lands.

Peggy feels that we need to work together to keep our lands open. Once our lands are closed by the government, it becomes nearly impossible to gain access again.

Plans for the immediate future include revamping the ALAA website and publishing the newsletter again on a quarterly basis. We need a good, ambitious editor to gather information and put it out in an informative manner. Please let Peggy know if you or someone you know would like to do this. ALAA needs the help and knowledge and years of each and every one of you.

In order to have a voice in what happens to the future of our access to public lands, we need to grow as an organization. Please get your friends and anyone concerned in keeping gates open to join ALAA. Dues can be sent to our Treasurer, Toby Cozens and remain just \$25 per year.

If you have any ideas or want to help the organization, please contact Peggy directly at 304 East 45th St., Boise, ID. 83714...phone:208-321-2061...email grumpes@quix.net

UNIVERSITY OF NEBRASKA NEWS



From the University of Nebraska State Museum, 14th and U Streets

Number 27

March, 1965

THE STORY OF A NEBRASKA SEA SERPENT

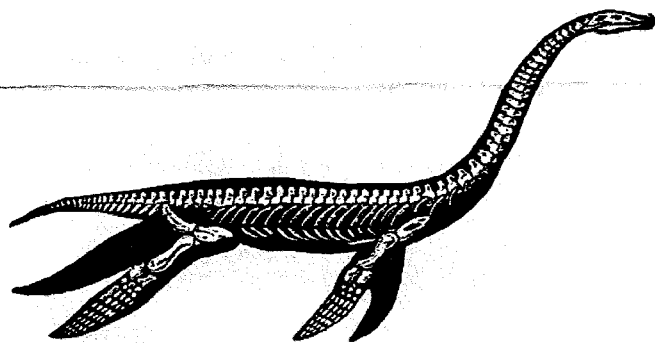


Fig. 1. Restoration of a plesiosaur. (Reproduced from LeConte's "Geology," D. Appleton and Company.) The skeleton from Nebraska had a proportionately longer neck.

An unusual skeleton of a 41-foot long plesiosaur, a Cretaceous marine reptile, has been added to the Museum's extensive fossil exhibits. The specimen was collected near Valparaiso in Saunders County only about 22 miles north and west of Lincoln. It was preserved in the Graneros (lower Colorado Group) shales, which date back in geologic time some 120 million years. This is the only skeleton of a plesiosaur so far found in the state although portions of a disarticulated skeleton were found in a Greenhorn Limestone Company quarry near Garland in Seward County in 1955. The Garland locality of somewhat later age is about ten miles from the site of the new discovery.

The Valparaiso skeleton, with skull and jaws attached, was found articulated and the vertebral column was complete from the first neck vertebra to the tip of the tail. Unfortunately recent erosion by a small branch of North Oak Creek eroded away portions of a few of the vertebrae, the ribs, and two of the four paddles. The skeleton in general, however, is in an excellent state of preservation.

The acquisition of the plesiosaur is an excellent example of cooperative effort on the part of various people representing a number of organizations. The skeleton was first discovered on the farm of Adolph Rezac in the spring of 1964 by Mr. Hal DeGraw of the Nebraska Geological Survey, University of Nebraska, Mr. Charles Osborn of the Bureau of Reclamation,

and Mr. Phil Emory of the United States Geological Survey. These three geologists were examining the Cretaceous shale and limestone deposits along North Oak Creek valley when a few of the vertebrae and portions of two of the paddles were found exposed in a creek bank. The find was reported to the Museum but excavations could not be started because of lack of funds. It was not until November that the specimen was again called to the attention of the Director of the Museum by members of the Lincoln Gem and Mineral Club who offered to aid in the recovery of the fossils if the Museum would supply supervisory help. The site of the discovery was revisited and it was decided to undertake the project even though it was late in the fall. Museum staff members Lloyd G. Tanner, C. Robert Eisele, Larry Martin, and C. Bertrand Schultz were responsible for the supervision of the work and 22 members of the Lincoln Gem and Mineral Club helped in the excavating and preservation of the plesiosaur skeleton. Mr. Adolph Rezac and his family aided in many ways and also allowed unlimited access to the site by visitors as well as the excavators. Mr. and Mrs. Walter Behlen of Columbus, Nebraska, furnished funds which were used for miscellaneous expenses. Financial contributions also came from the Lincoln Gem and Mineral Club.

The weather remained mild during the field work, although the temperatures did get as low as 6° above zero at one time. A wooden structure covered with plastic sheeting was built over the fossil quarry for protection against the weather, and buckets of hot coals were brought into the excavation area so that the temperature could be raised enough to carry on work in a satisfactory manner. The temperature of the bone slabs had to be above freezing so that the plaster of Paris, which was used in the casting of the field blocks, would set properly. The last of the skeleton, which included a section of the neck vertebrae attached to the skull and jaws, was removed on November 25, the day before Thanksgiving.

The fossils from the plesiosaur quarry near Valparaiso were taken to the Museum's preparation laboratory on the third floor of Nebraska Hall, and the work of getting the specimen ready for exhibit was started at once. The preparation was carried on by volunteers from the Lincoln Gem and Mineral Club under the direction of Museum preparators Ivan

Burr and Don Martin. It was decided to expose only the top side of the bones and leave the specimen in the field casts exactly as it was found. The skeleton was prepared in record time (five weeks), and a large portion of it was installed in a temporary display with two dinosaur (*Allosaurus*) skeletons in Gallery A on the third floor of the Museum.

Plesiosaurs, of the type found near Valparaiso, were reptiles which were well adapted to a marine habitat. They had a broad, flat body with a long neck and short tail. The pelvic and shoulder girdles as well as the limbs were modified for an aquatic life and long, paddle-like structures were developed for swimming. The articulations for the limbs indicate that the animal had unusually powerful muscles and apparently could swim backward as well as forward. The four paddles were like huge oars and the giant plesiosaurs literally rowed along rather than swimming like a fish. The long-necked plesiosaurs are usually classified as elasmosaurs and the short-necked forms are called pliosaurus. The skeleton from Saunders County had a neck about twenty feet long and would therefore be considered an elasmosaur.

The exact identity of the Saunders County plesiosaur has not been determined but it does appear to be similar to a skeleton of *Thalassomedon hanningtoni* described by a University of California specialist on plesiosaurs, Dr. Samuel Welles. This specimen was found in the Graneros shales of Baca County, Colorado, and is on exhibit at the Denver Museum of Natural History. Dr. Welles plans to come to the University of Nebraska State Museum to study the newly discovered Nebraska plesiosaur.

Parts of the giant fossil marine fish, *Portheus*, including a tail, miscellaneous vertebrae, and jaws, were found in the Saunders County plesiosaur quarry. The evidence obtained would indicate that some of the *Portheus* bones obtained belonged to a fish that measured some 12 to 14 feet long. For comparison, the Museum has on exhibit a complete skeleton of *Portheus* (measuring 12 feet six inches in length) from the Cretaceous of Kansas. These giant fossil fish are close relatives of the living tarpons and also of the herring, salmon, and trout. A number of fossil shark teeth and parts of another plesiosaur also were recovered in the Valparaiso plesiosaur quarry.

The newspapers, radio, television, and other news media gave the story of the plesiosaur find a large amount of publicity. The visitor population to the Museum increased noticeably, which led to the decision to prepare the specimen for exhibit as quickly as possible. Finding evidence of a "sea serpent" in the plains of Nebraska undoubtedly incited the imagination of many of the people of the region. There has been a tremendous amount of interest shown in the specimen.

For more than 100 years the region which is now Nebraska has been a famous collecting ground for fossil mammals, but few important fossil reptilian bones have been reported. Up until the present time only one dinosaurian bone has been reported from the entire state. This bone is the distal end of a well preserved femur of a trachodont or "duck-billed" dinosaur from the Dakota Sandstone (Cretaceous age) two miles south of Decatur, Burt County, near the Missouri River in eastern Nebraska. Dr. Erwin H. Barbour, former Director of the Museum, reported this discovery in 1931. There is a good reason for the absence of dinosaurian bones in Nebraska because of the scarcity of geological outcrops which might contain fossils of these reptiles. During the latter part of the Mesozoic ("Age of Dinosaurs") a great inland sea stretched over much of the Great Plains region from what is now the Gulf of Mexico to Southern Canada. It was in this tropical sea that the plesiosaurs, mosasaurs, fish, sharks, and other marine animals lived

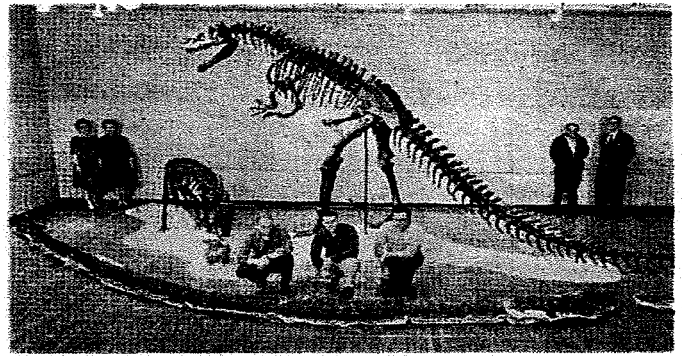


Fig. 4. Plesiosaur skeleton (on floor in foreground) being installed in a temporary exhibit in Museum. Three Museum preparators in foreground and four volunteers from Lincoln Gem and Mineral Club standing in background to provide scale for exhibit. The two mounted dinosaur (*Allosaurus*) skeletons are from the Jurassic of Utah and were donated to the Museum by Mr. and Mrs. Walter Behlen of Columbus, Nebraska.

in abundance. The sea stretched across all of Nebraska except for a few places in the easternmost part of the State. Many deposits of fossil oyster shells (*Ostrea*) and other marine invertebrate remains also are to be found in Cretaceous shales and limestones.

A "Hall of Dinosaurs" is being planned for the Museum in order to show the great diversity of animals which lived during the "Age of Dinosaurs." It is hoped that private or state funds for such an educational extension of the Museum's exhibits can be made available in the near future. This will allow the various scattered exhibits of Mesozoic life in the Museum to be displayed in one hall. Many other specimens now in storage also could be shown.

Selected References

- Barbour, Erwin Hinckley. 1931. Evidence of Dinosaurs in Nebraska. Bulletin, University of Nebraska State Museum, Vol. 1, No. 21, p. 187-190.
- Colbert, Edwin H. 1951. The Dinosaur Book. McGraw-Hill Book Company, Inc., New York.
- Colbert, Edwin H. 1955. Evolution of the Vertebrates. John Wiley and Sons, Inc., New York.
- Welles, S. P. 1952. A Review of the North American Cretaceous Elasmosaurs. University of California Publications in Geological Sciences, Vol. 29, No. 3, p. 47-144, Figs. 1-25.

C. BERTRAND SCHULTZ
Director of the Museum
and Professor of Geology

Lincoln Gem and Mineral Club Members Who Aided in the Plesiosaur Project

Mr. Thomas Simmons was President of the Lincoln Gem and Mineral Club during the time the plesiosaur skeleton was excavated and prepared; Mr. Gene Eno was Field Trip Chairman for the Club; and Mrs. Velma Bloyd was Supervisor of the Club members who worked on the project. The following members of the Club contributed time to the "plesiosaur project" as it was called (names listed in order of the amount of time spent): Mr. and Mrs. Norman Engelhart, Mr. and Mrs. Ralph Ulrich, Mr. and Mrs. James Parks, Mr. and Mrs. Clyde Miller, Mrs. Norma Miller, Mr. Ray Sincebaugh, Mrs. Marjory Heedick, Mr. C. Ray Waddel, Mr. Roger Pabian, Miss Joan Baugher, Mr. Larry Pope, Mr. Glen Lyman, Miss Miriam Forbes, and Mr. and Mrs. Maurice Tracy.

MEMORABILIA

A Classic From EVEY

THE RATTLE SNAKE EGGS

For years while traveling and selling at rock shows, I bought and sold many different gemstones, minerals, and rocks. While visiting my friends in Blackwell, Oklahoma, the man whose place I was at told me to come out to his shop, since he wanted to show me something new he had found. He had made up a few flats to see if they would sell. He called these items "Petrified Rattle Snake Eggs".

I bought a few flats to see if they would sell, which they did. The eggs were from western Oklahoma and they were of gypsum and alabaster. When found they would always be in a clump or nest. They were white and gray and did look like a snakeskin.

As I have said, I bought many of these eggs through the years and sold them at a lot of rock shows. But one time Lois and I were in Topeka, Kansas, at a show and I had the eggs out in a little egg crate. Along came a real big guy and a mousy little guy. They both stopped and looked at the eggs. The big guy said to the little guy, "Boy I remember these from when I was a little kid. We used to find these and break them open and there was a little tiny snake in the egg!"

I decided to leave, so I said to Lois, "I'll be back in a minute." I left but stayed back and watched as Lois told the man they were not real snake eggs. After she told him, he kind of blew up and left. Then it happened. The show chairman came over and asked, "Hey Evey, what are these things?" I told him that they were alabaster and gypsum. He then asked, "Is there a snake in the eggs?" I told him, "No the rattle snakes are born alive, not from an egg". He looked at me and said, "Sorry, Evey, you have to take them off your table. That's false advertising!"

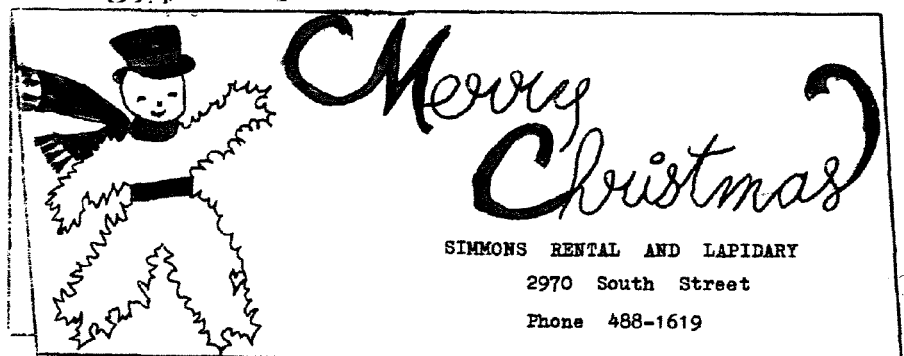
I told him I would do that if he would read me the sign over the table of an Oregon dealer. The very large sign read: "Genuine Oregon Thunder Eggs"! Then I said if that man's thunder lays eggs, my rattle snakes lay eggs." He looked at me and said, "Evey, you got me. Sell your eggs".

Over the years, my egg source dried up, since the fellow I was getting them from passed away. I was over to my shop the other day, and I found my one last "rattle snake egg". I'll have to bring it to show and tell some day.

Rockspectfully,

Evey

In the 60's, graphics in the Pick & Shovel were hand drawn and colored with crayon!



MEMORABLIA

FROM OCT., 1974 LAPIDARY JOURNAL

PICK & SHOVEL

JUNE 1963

THE MAIL BAG

By June Culp Zeitner

CONTRIBUTING EDITOR

I picked up our newspaper the other night, and lo and behold, here was an article about an unwelcome visitor at the National Gem Show at Lincoln. Someone had a large display of South Dakota wood at our show. They heard a strange noise as they were packing up after the show. Investigation disclosed that a live 3 1/2 foot rattlesnake was in one of the cracks in a large section of wood. Officials of the Lincoln Zoo had to turn down the snake, as they had no accommodations for reptiles, so the rattler was sent to Chicago. How is that for news?

Marie Taylor
Lincoln, Nebr.

Didn't I tell you South Dakota would be enthusiastic about supporting your show? I'm glad the snake went to the Chicago Zoo. Of course a Texas snake would have been bigger, but what Texas snake has been to a National Gem Show? I really had no idea South Dakotans would go to such great lengths.

A TRIBUTE TO THE
LINCOLN GEM AND MINERAL CLUB
Hosts of the 1980 National Show
(With apologies to Bob Hope)

THANKS FOR THE MEMORIES.....
Of rocks and gems galore
Brought in from shore to shore,
So beautiful and gorgeous
You wished that there were more.
WE THANK YOU SO MUCH!

THANKS FOR THE MEMORIES.....
Of friendships that we made
While admiring the jade
And other stones and drystals
Whose beauties never fade.
WE THANK YOU SO MUCH!

Shows like this do not come often,
In some ways that may be good.
The efforts expanded would soften
Even those who are made of wood.

SO THANKS FOR THE MEMORIES.....
We'll cherish every hour
We spent upon the floor,
Admiring this show of shows.
Now who could ask for more?
WE THANK YOU SO MUCH!

By George "Chic" Chacek, Loup Valley Gem &
Mineral Society, INC.

OLD JOE THE ROCKHOUND

Old Joe the rockhound, lay dying in his bed,
Before he lay down his earthly cares, these things to me he said,
"Lean closer to me, sonny, so I may whisper to you
When I leave this earth and go to heaven, there are things I'm
going to do.

There'll be heavenly hills of rocks to climb
And heavenly quarries there, too,
There'll be thousands and thousands of cabs to cut
Each of heavenly hue.

They say St. Peter loves rockhounds,
'ould I be too bold if I should
Suggest he trim the pearly gates
In agate and petrified wood?

Then Joe took one last long, sighing breath,
And departed this earthly world.
When he met St. Peter at those gates of pearl
This story then unfurled.

You're kidding, said Peter, these gates of pearl
For ages and ages have stood,
And now you want to decorate them
With agate and petrified wood?

I'm afraid you don't understand, my son,
Up here, no work is done.
You leave your labors down there on earth,
In heaven everything is fun.

It's you who don't understand, said Joe,
It won't be work you see,
To spend eternity cutting up rocks
Will be heaven enough for me."

So when thunder and lightning roll 'cross the sky,
Don't look up in horror or awe
For rockhounds all know it's the sparks and the noise
From Old Joe's celestial rock saw.

Song lyrics written and contributed by Gene Eno

EXTRA ROCKHOUND NEWS EXTRA
LONG ENOUGH TO COVER THE SUBJECT - SHORT ENOUGH TO BE INTERESTING
9th Annual Show Lincoln, Nebr. Summer 1967 8 pages FREE

CENTENNIAL ROCKRAMA TO BE BEST YET

CHALLENGE ISSUED. The Lincoln Gem and Mineral Club has issued a challenge to all coners to produce a larger fairburn agate than the one which will be displayed at the Lincoln Rockrama. All challengers are to present their entries at HIGH NOON on Sept. 23 at Pershing Auditorium. All entries must have substantial fairburn pattern and be present to qualify for the weigh-off.

LINDE STAR TO BE RECONSTRUCTED IN LINCOLN News received by this group indicates a complete boule-making display to be featured at the Centennial Rockrama. It will depict the growth series of a Linde Star from seed crystal to polished stone, and will also include some finished jewelry.

Plans announced for the Nebraska Centennial Rockrama indicate it will be one of the best Rockramas ever held in the Midwest Federation. Howard Taylor, Show Chairman, indicated the Rockrama, to take place at Pershing Municipal Auditorium in Lincoln on Sept. 22, 23, 24, will have a number of truly outstanding feature displays. Highlights of the show, commemorating the 100th

SEE INSIDE

Hints and Tips

via GI Nugget, Sept. 2004

SHOP HINT

From The LOESS Bulletin 2/03 via The Glacial Drifter 5/04

To hold my tumbled polished stones while epoxying bell caps to them, I set them in 3/8 inch Perm-a-Gum cords. Perm-a-gum is a non-hardening sealing and caulking material put out by Calgon. We used this material when I was working in the refrigeration/air conditioning trade. I use round toothpicks to hold the bell caps while applying epoxy. Trying to hold them with your fingers or tweezers is too messy. I prepare about 800-1000 stones with bell caps each year and have found these to be very helpful tips.

via Quarry Quips, Sept. 2004

A Safe Way to Estimate Hardness

A quick and safe way to determine the hardness of a stone is to mark it with an aluminum pencil. The fainter the marks the harder the stone and you will not harm the tested piece. An aluminum mark cannot be made on a stone harder than 7 on the MOS scale.

Author unknown, original source unknown, taken from Golden Spike News, Golden Spike G&S Ogden Utah, July 2004

Cleaning Fragile Crystal

To clean fragile or hard to reach recesses in mineral specimens, try CREW, a product of Johnson's Wax. Spray the foam on the rock, let it set a minute, then rinse with water. It is safe on all materials including calcite and fluorite.

Author unknown, taken from The Tumbler, Boeing Employees' Mineralogical Society Seattle Washington, July 2004

Before grinding and sanding cabochons, put cold cream on your hands and rub them until they are dry. This fills the pores and cracks in your fingers. When grinding, sawing, or sanding is completed, the dirt can be washed off easily. Good idea for painting, also.

Original source Jasper's Jargon, 1988, author unknown, taken from The Tumbler, Boeing Employees' Mineralogical Society, Seattle Washington, November 2003

If your soft plastic safety goggles are scratched or foggy, try toothpaste and only a little elbow grease. It works super.

Author unknown; source Golden Spike News Golden Spike G&MS Ogden UT, June 2003

Places to Go, Things to Do

October 24-25- Des Moines Lapidary Society, Des Moines, IA., 29th Annual Show...contact Dirk Ver Steeg, (515) 966-2205

October 30-31- Black Hawk Gem and Mineral Club, Davenport, IA., Rock Show, Contact Kelly Moore (563) 445-3034

November 19-20- Flatirons Mineral Club, Annual Show, Boulder Elks Lodge, 3975 28th St., Boulder, CO., 80301

Regional Federation Shows**Southeast**

December 10-12, 2004, Norcross, GA.

California

June 10-12, 2005, Roseville, CA.

Rocky Mountain

June, 2005, Colorado Springs, CO.

Eastern

March 19-20, 2005, Athens, PA.

Northwest

August 5-7, 2005, Albany, Oregon

Midwest/ AFMS

August 16-21, 2005, St. Louis, MO.

CONGRATULATIONS

The following Nebraska club members are winners in the AFMS Bulletin contest:

ORIGINAL ARTICLE: Second Place- Delores Rose, Grand Island Earth Science Society, GI, NE.

ADVANCED ARTICLE: Second Place- Ben Vrana, Loup Valley Gem&Mineral Society, Schuyler, NE.

GOOD WORK!

2004 ELECTED OFFICERS

President	James Marburger	332 Locust	Hickman, NE	68372	792-2348
1 st Vice Pres.	Pat Akins, Jr.	5017 N. 6 th St.	Lincoln, NE	68521	477-1322
2 nd Vice Pres.	Roger K. Pabian	5301 X Street	Lincoln, NE	68504	465-0144
Treasurer	Vera Lyman	420 N. 56th St.	Lincoln, NE	68504	464-6089
Secretary	Sharon Marburger	332 Locust	Hickman, NE	68372	792-2348
Board Member	David Heffelbower	1819 Washington St.	Lincoln, NE	68502	cell 890-2794
Board Member	James Atkins	3028 S. 35th St.	Lincoln, NE	68506	483-1610
Board Member	John Harrison	330 Locust	Hickman, NE	68372	792-2337
Board Member	Judy Reilly	4050 Worthington Ave	Lincoln, NE	68502	421-3064

Nominating Committee

3 years	Mary Pittard Phyllis N Parks
2 years	Amy Dexter-Guy Edward Ridge
1 year	John Harrison Aulden Stewart

Chairman: Immediate Past-President Susan McMahan

Long-Range Planning & By-Laws Committee

3 years	Daniel Dexter-Guy Phyllis Parks
2 years	Susan Taylor Edward Ridge
1 year	Vera M. Lyman Roger K. Pabian

Standing Committees

Education /Librarian:	Roger Pabian	MWF Liaison:	Vera Lyman
Field Trips:	Pat Akins, Coordinator	Scholarship:	Vera Lyman
Historian:	Susy McMahan	Christmas Party:	Edward Ridge
Membership Record:	Edward Ridge	2005 Show:	John E. Harrison
Programs:	David Heffelbower	2004 Show:	Roger Pabian
Property:	Pat Akins, Jr. & James Marburger	2005 Swap:	Roger Pittard
Youth Activities:	Kay Jurgens & Susy McMahan	2004 Swap:	Pat Akins, Jr.
Refreshments/Door Prizes:	Judy Reilly		
Housing Committee:	Susy McMahan, Pat Akins, Charles Wooldridge & Vera Lyman		
Auditing Committee:	John Harrison, Roger Pabian & James Marburger		
Geology Day Coordinator:	2nd Vice President		

L. G. M. C. web address—courtesy of Jim Atkins:

<http://incolor.inetnebr.com/jna/gemclub/lgmc.htm>

Your PICK & SHOVEL Staff

Publisher: Lincoln Gem & Mineral Club, Inc., P.O. Box 5342, Lincoln, NE 68505-0342

Editor: **Judy Reilly** 421-3064
4050 Worthington Ave., Lincoln, NE 68502
Email: jshannonreilly@aol.com

Circulation: Phyllis N. Parks 476-6798
Business Reporter: Vera Lyman 464-6089
News Reporters: All Club Members

The *PICK & SHOVEL* is the official publication of the Lincoln Gem & Mineral Club, Lincoln, Nebraska. Articles and items appearing within may be reproduced in other club bulletins, provided proper credit is given to the *PICK & SHOVEL* and the author and that a reprint of the bulletin is sent to the editor of the *PICK & SHOVEL*.

The purpose of this corporation shall be to study, promote an interest in, and disseminate knowledge of lapidary and various Earth Sciences including but not necessarily limited to geology, paleontology and mineralogy. It shall be a particular purpose of the corporation to provide education in these fields to its members and the general public, especially to youth and student groups.

J. J. & L. ROCKS and MINERALS

COME SEE US FOR YOUR ROUGH NEED'S

GEMS - CABS - SLABS - MOUNTINGS
STERLING SILVER - GOLD FILLED - 14K GOLD
SILVER SUPPLIES - TOOLS - MACHINERY - NEW AND USED
CUSTOM SERVICES FOR SLABS, FLAT LAPPING, AND CABOCHONS

STARTING OUR 29th YEAR

330 LOCUST
HICKMAN, NE 68372-0068

PHONE
402-792-2337

"PROVIDING SUPPLIES FOR THE NOVICE TO THE DISCRIMINATING ROCKHOUND"
Please Call for Appointment

LINCOLN GEM & MINERAL CLUB
hosts our

47th Annual Show
at

PERSHING CENTER
226 Centennial Mall South

*** April 9 - 10, 2005 ***

Note: Dates changed due to Easter.

Show Chairman - John Harrison

Advertising by rock-hobby business or interest is permitted with the approval of the Board. The rate now set at \$15.00 per full page; \$7.50 per 1/2 page; \$5.00 per 1/3 page; and \$3.75 per 1/4 page (min) per issue, paid in advance. These ads will be placed through the bulletin as space permits.

Subscription to the Pick & Shovel is \$10.00 per year mailed.

Dues to Lincoln Gem & Mineral Club are as follows:

Adults (age 16 and over) \$10 per year Juniors (age 12 to 16) \$2 per year

Family Membership (Couple, resident children under age 16) \$22 per year

New memberships must be approved by the Board, after the applicant attends at least one meeting of the club and pays the above dues plus a \$5 registration fee.

Meetings: Fourth Thursday, Sept. through May except December & January to be announced. Held at Antelope Park Indoor Shelter, near 30th and Sumner, next to the Veterans Memorial and the children's playground.