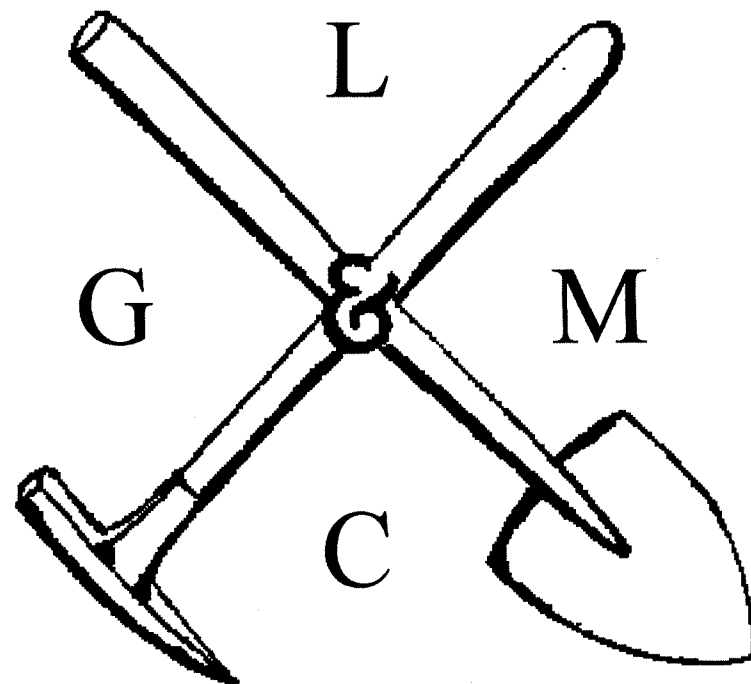
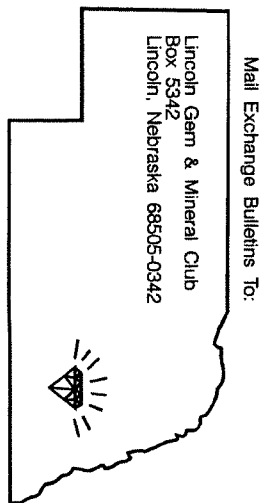
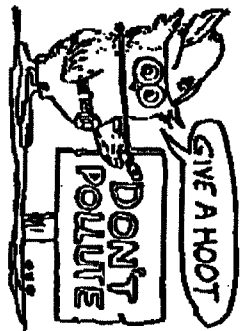


# THE PICK & SHOVEL

September 2004



OFFICIAL PUBLICATION OF  
LINCOLN GEM & MINERAL CLUB  
LINCOLN, NEBRASKA



**H. E. L. P.**  
Help Eliminate Litter Please



Associated with

*History*

## CLUB EVENTS

### CALENDAR

**Sept. 23** General Mtg. Antelope Park, 7PM,  
program on Lecheguilla Cave

29 Board Mtg, Kinko's 48&Vine 7PM

**Oct. 28** General Mtg/ Halloween Party/ Club  
Membership Reunion/ MWF Silent Auction

### Recap of May Meeting

Presentations by LGMC Scholarship recipients, Steven Fischbein from UNL and Naomi Kohlmeier from Concordia University, Seward, Nebraska... Mr. Fischbein received the annual \$500 scholarship and Ms. Kohlmeier received a special education fund scholarship of \$250.

### September Meeting

**Program:** Lecheguilla Cave Film Presentation

**Snacks:** Bring your favorite "finger foods"

**Door Prizes:**???

**Display Material:** Summer finds

### October Meeting

**Program:** Eric Fritsch; "Minerals of Canada"

This will be a special meeting with a lot of activity. In addition to Eric's program, we will have a silent auction with proceeds going to the MWF Endowment Fund. (See page 3.) Please bring rocks, minerals and other hobby-related items for the auction And don't forget, it's HALLOWEEN. Bring a guest and come in a hobby-related costume. Children welcome!

### From the Editor

Remember to bring a list of club items in your possession to Sharon Marburger so she can keep an accurate "PROPERTY" list.

There will be a sign-up list for snacks at the Sept. meeting. Please pick a date and sign up!

Please bring hobby-related specimens for monthly door-prizes to Judy Reilly. Label with your name and specimen identification. JSR



## PRESIDENT'S MESSAGE

Summer has moved very quickly. A big thank you goes out to the Denver Guild for having us as guests at their claim this summer. I hope that all who attended our Club's trip had fun. Next year will bring a more bountiful collecting trip for those in attendance. If you have any ideas for a trip, please get with me or the field trip chairman.

I am still looking for two people for taking charge of two duties for the Club. They are 1) historian and 2) junior youth group leader. Judy Reilly volunteered to head up a steering committee to develop junior program guidelines and find a youth leader or leaders. Our Club has a lot of good to share. We need to work together to promote education of the hobby, and share our experiences to all members, potential new members, and guests.

A reunion of past and present Club members is being planned for the October meeting, and blanket invitations will be made to the general public. We hope to renew past friendships and make new ones.

The nominating committee will be phoning soon. Please take an active interest in YOUR Club.

Rock on!

James Marburger

### Regional Federation Shows

#### South Central

September 25-26, 2004- Humble, TX.

#### Southeast

December 10-12, 2004, Norcross, GA.

#### California

June 10-12, 2005, Roseville, CA.

#### Northwest

August 5-7, 2005, Albany, Oregon

#### Midwest/ AFMS

August 16-21, 2005, St. Louis, MO.

**Eastern & Rocky Mountain, To Be Announced**

## Lapidary Demo Lapidaries

Members of this loosely woven group had the opportunity to demonstrate the art of lapidary a few times this summer. On June 16th, The Nebraska Gem and Mineral Club in Omaha had a 'demo night' to introduce members to the new Genie machine the club had just purchased, and invited members to demonstrate on their own machines. Aulden Stewart and Susy McMahan, members of both Lincoln and Omaha club did so, with Roger Pabian demonstrating as our invited guest. There was a tremendous amount of interest, even from the silversmithing class meeting down the hall! A great time was had by all.

On July 30th 'Big Al' Stewart, 'Captain Agate' Roger Pabian, 'Mr. Opal' Dave Heffelbower, and 'Sassy Susy' McMahan had the privilege of revving up our machines at the Waterford at Williamsburg Assisted Living Center. We had an audience as fascinated with us as we were with them. As Dave said, "only one casualty occurred; one stone came undopped and did not reach escape velocity. It was stopped however by the brave sacrifice by a glass of fruit juice." Oh, the Stories!! We had a great time! As we were leaving, one of the gentleman was already out hunting the landscaping rocks around the flowers.



On August 19th, Captain Agate and Sassy Susy (Big Al & Mr. Opal had previous commitments) demonstrated at the VA Hospital for the Lincoln Employees Association meeting. Our newsletter editor Judy "Queenbee" Reilly is a nurse at the VA, and Education Chairperson for the LEA so she knew who to call!! We were only there over the lunch-hour, but fielded a lot of questions and had some employees interested in coming to the meeting. And Roger found the perfect "cart" for his equipment- an extra-wide wheelchair!

We accept new volunteers at any time to join our wacky group!! You can even borrow our stuff.

(Those who attended were very impressed and sent Cap'n Agate and SS a nice thank you note...ED.)

LINCOLN GEM & MINERAL CLUB, INC. – BOARD OF DIRECTORS – May 6, 2004 Kinkos, 48th and Vine

President Jim Marburger called the meeting to order at 7:00 p.m. Board members present were Jim Marburger, Sharon Marburger, Vera Lyman, David Heffelbower, Jim Atkins, John Harrison, Roger Pabian, and Judy Reilly. Ed Ridge was the only guest.

The minutes of the previous meeting were handed out. John Harrison made the motion to accept the minutes as printed, 2nd by Jim Atkins. Motion carried. Jim Atkins moved to accept the Treasurer's report, 2nd by David Heffelbower. Motion carried.

A request to sponsor a prize was received from the State Fair. After open discussion, Roger Pabian made a motion to give out a prize at the State Fair, not to exceed \$25 and also award an annual membership to the winner of the lapidary and jewelry arts category. Jim Atkins 2nd the motion, motion carried.

In order to keep track of the Club's material possessions, it was suggested that an accurate inventory and locater system be kept. Secretary Marburger volunteered to gather the information and track the physical location of everything. The system will be similar to a library, utilizing a checkout system.

The 2004 Show report will be published as final in the next Pick & Shovel.

John Harrison, Chairman of the Audit Committee, stated that the Treasurer's books are up-to-date and approved. The official letter will be published in the next Pick & Shovel.

Two new membership applications were put before the Board for approval. Annette Gifford, sponsored by Phyllis Parks; and Terry, Andrea, and Leahh Anderson, sponsored by Pat Akins. Jim Atkins moved to accept the new members, John Harrison 2nd. This adds three adults and one junior to the Club's roster.

At this point, President Marburger surrendered the Chair to 2nd Vice President, Roger Pabian. Mr. Marburger made a motion to establish a property maintenance fund, to be supplemented annually with a minimum of \$700 from the Show budget, beginning with the 2005 Show. 2nd by Vera Lyman. Motion passed. Mr. Pabian returned control of the meeting to President Marburger.

Vera Lyman then made a motion to convert the Grant Quinn Memorial Fund to the Property Maintenance Fund, explaining that the fund was originally set up to provide material for a fluorescent display in memory of Mr. Quinn. The deaths of those involved with this fund caused the issue and monies to lie dormant. Vera's motion included the request that a plaque in memory of Mr. Quinn be added to the fluorescent display. John Harrison 2nd the motion. Motion passed. \$372 from the Grant Quinn Memorial Fund will be transferred to the Property Maintenance Fund and a memorial plaque added to the fluorescent display.

The 2005 Show Chairman, John Harrison, reported that the 2005 Show dates have been changed to April 9 & 10 because Easter falls on the usual Show weekend. Pershing has been contacted. The Show dates return to the usual 4th weekend in March in 2006.

Judy Reilly stated that the Midwest Federation Show in Cedar Rapids was excellent. Congratulations to Editor Judy and the Pick & Shovel for winning 3rd place for "small bulletin".

John Harrison expressed concern over the lack of junior members and appropriate organized activities for them. Discussion ensued regarding 1) finding a person or persons willing to actively guide our youth, 2) creating an interesting program for them, and 3) having machinery available for checkout and use. Once this is set up, a liability statement, signed by parent/guardian, would be necessary before equipment could be loaned out. The youngsters would have free use of the machinery; adults would lease. In an attempt to restore our youth members, Vera Lyman and Sharon Marburger will send letters to past juniors, inviting them to the September meeting, telling of a new juniors program. Mr. Harrison made a motion to have the board pursue attracting kids into the program, the subject to be discussed at the May General Meeting. Second by David Heffelbower. Motion carried.

Research on past adult members will be conducted. Invitations will be sent, inviting them to the October meeting for a "blow-out". Details to be discussed at the May General Meeting.

The next Board meeting will be August 31 at Kinkos.

Motion by Jim Atkins to adjourn; 2nd by David Heffelbower. Meeting adjourned at 8:30p.m.

Respectfully submitted,

*Sharon Marburger*

\*\*\*\*\*

LGMC'S Treasurer's Report for June, July, August 2004		
Pinnacle Checking Balance on May 31, 2004		\$ 277.72
Summer Receipts:		
JJ & L Rocks & Minerals-2005 Dealer Space	450.00	
Return Check #3893 - Pete Crawford	<u>50.00</u>	500.00
Summer Payments:		
Transfer to Money Market Account	400.00	
Pinnacle Checking Balance on August 31, 2004		\$ 377.72

LINCOLN GEM & MINERAL CLUB, INC. GENERAL MEETING

May 27, 2004 at Antelope Park Shelter

Meeting called to order at 7:31 p.m. by President James Marburger. Seventeen members and 9 guests were present. Guests were Steve and Robin Fischbein; Naomi and Jon Kohlmeier; Dr. Jack Kinworthy; Dr. Smith; Jerry Moore; and Terri and Sonya Worley.

Phyllis Parks made the motion to accept the minutes of the April meeting as printed, 2nd by Jim Atkins. Motion carried.

Motion was made by Jim Atkins to approve Treasurer's report as printed with 2nd by John Worley. Motion carried.

**OLD BUSINESS:** Congratulations to Judy Reilly for taking third place in small bulletin publications at the Midwest Federation Show in Cedar Rapids.

Note that the Schryler gem and mineral show will be one week later than what was published in the Pick & Shovel.

A donation of \$200 from the silent auction proceeds was presented by 2004 Show Chairman, Roger Pabian, to NAOESCI President, Pat Akins.

We have four new members: Annette Gifford and Terry, Andrea and Leah Anderson.

Upon receiving a request from the State Fair, the Board decided to sponsor a prize, not to exceed \$25 and also award an annual membership to the winner of the lapidary and jewelry arts category.

A formal list of "floating" property owned by the Club will now be maintained. Members holding any property are asked to provide a list to President Marburger or 1st Vice President Akins.

A big thank you to Phyllis Parks and the Audit Committee for completing the audit and bringing the books up to date.

**NEW BUSINESS:** Pat Akins is looking into taking a mining class in order to rockhunt in sandpits. It is now the law that a mining certificate is required in order to access sandpits. If anyone is interested in attending the class, please contact Pat.

President Marburger announced the resignations of Susy McMahan as club historian and Kay Jurgens as juniors leader, and asked that members consider volunteering for the positions. This will be discussed further at the next meeting.

John Harrison, 2005 Show Chairman, reported Pershing has confirmed availability and reservations for the April 9-10, 2005 show date.

A reunion is being planned for the October general meeting. We plan to send special invitations to past members, inviting them to attend the potluck and meeting. Ideas for making this a huge, wonderful, fun time are welcome. Phyllis Parks suggested having a program of old club pictures and history.

John Harrison made the motion to adjourn to program at 7:48 p.m., 2nd by Jim Atkins.

Steven Fischbein and Naomi Kohlmeier, scholarship recipients, provided presentations of their respective study areas. Mr. Fischbein received the annual \$500 scholarship and Ms. Kohlmeier received a special education fund scholarship of \$250.

Respectfully submitted,

*Sharon Marburger*

Secretary

LGMC's Treasurer's Report for May 2004		
Pinnacle Checking Balance on April 30, 2004		\$ 1,358.15
May Receipts:		
Pick & Shovel Ad- (Acc'ts Recvbl) '98	45.00	
MWF Directories (Suspense) @ 2.25	5.50	
Name Badges (Suspense)R & M Pittard	19.15	
Membership-2004 = Gerald Moore	<u>15.00</u>	<u>84.65</u>
May Payments:		
Kinkos - Board Mty - 5/6 2 hrs.	20.00	
Rixstines (5 Name Badges) Suspense	47.88	
KFOR_3Three Eagles - 2 Ad-libs	20.00	
NAOESCI-Pat Akins, Pres.-State Show Si. Auc.	200.00	
Naomi Kohlmeier (Concordia Scholarship Recip.)	250.00	
Steven Fischbein (UNL Scholarship Recip.)	500.00	
Office Max (May P&S Copy)	60.38	
Super Saver (Scholarship Supper items)	43.58	
John Harrison - Phone/Postage (2005 Show)	9.09	
Postmaster -Mail 21 Who's Who/Book of Stamps	<u>14.15</u>	<u>1,165.08</u>
Pinnacle Checking Balance on May 31, 2004		\$ 277.72

## MWF Newsletter, September, 2004

## AFMS Newsletter, September, 2004

**OCTOBER...MWF'S SILENT AUCTION MONTH**

Here is how this works...I'm asking that each club in the MW Federation holds a rock/mineral/fossil specimen silent auction at your October monthly meeting. If you have never had a club silent auction at a meeting, now is the time! The auction can be huge or small or any size you wish.

Very simple way to do this...ask members to donate some extra special items. It could be 2 or 10 specimens if you like, or 50 specimens, all marked so members know that the funds raised by the sale of the items will be donated to the MWF Endowment Fund in your organization's name.

Questions? I'm sure there will be. Email me at [steverox@upnet](mailto:steverox@upnet) or phone (906) 337-2274.

**The \$10 Challenge**

The challenge to every club to donate \$10 (made at the MWF Convention in Cedar Rapids) is not going so well. Out of 138 clubs, only 8 donated. I'm asking that each club donate \$10 to the Endowment Fund by Fall Meeting, 2004. With 138 organizations, that's \$1380.00!!!

Pamela Hecht, MWF Endowment Fund Chair

(Article edited for space, P&S Ed.)

**AFMS Historian's Report**

By Shirley Leeson

While it's always nice to attend the annual AFMS meeting of the Directors and visit with old friends, it's also special when someone comes up to you and presents you with something that fills a gap in the history of the AFMS.

This happened at Syracuse. Bob Livingston of the Syracuse Club brought me a large bundle of old newsletters. He had received them from an old member who is now unable to attend the regional functions. Among the newsletters were some of significant importance: Mar., 1964- with pictures on the cover of the Eastern Federation Officers; Sept., 1964- with pictures of the Northwest Federation Officers; AFMS Newsletters from July/ Aug., 1969, Nov./ Dec., 1969, and Jan./Feb., 1970; a Northern Pacific Railway Company flyer for the American Federation's Yakima, WA. Show in Sept, 1965; a page regarding plans for the 1967 Washington, DC National Show; and a booklet on how the All-American Fed Club award will be conducted, circa 1970.

Please remember to ask members if they have anything in their files that might help the AFMS to "fill in the gaps." (Article edited for space, P&S Ed.)

**IMPORTANCE OF AFFILIATIONS**

If you enjoy rocks enough to join this club, you need to know all you can about the hobby. You should know that we are dues-paying affiliates of the Midwest Federation of Mineralogical and Geological Societies (MWF) which in turn is a member of the American Federation of Mineralogical Societies (AFMS).

MWF consists of central states and is 1 of 7 separate regional federations. They provide us with information to help keep our hobby alive and growing- but it is up to us to make it happen. We do this by sending our members information about activities via the Pick & Shovel. Some of our information comes from MWF and AFMS newsletters which are received by our club President, Secretary, Federation Liaison and Pick & Shovel Editor. The AFMS newsletter also appears on the internet ([www.amfed.org](http://www.amfed.org)) along with detailed information from all 7 regional societies.

Personally, I subscribe and really look forward to the newsletters each month.

TRY IT, YOU MIGHT LIKE IT!!

Phyllis Parks

**Memorial Day Field Trip by Sharon Marburger**

Friday, May 28th was a lovely day to begin a rock collecting field trip. It was touch and go for a while. As most of you know, the previous week had been nerve-racking for many of us who live in the 52 mile stretch of destruction wreaked by the "Hallam Tornado". We were blessed that we escaped major damage. Our month-old camp trailer was buried under a tree with a three-foot diameter trunk, but once the tree was cut away, there stood the trailer, with no damage.

So, with the trailer hitched to the van, down the road we went to find new adventures in the Lincoln, Missouri area. Jim, my mother, and I found a quiet and very nice RV camping facility in Sedalia, Missouri. While all the other Memorial Day Weekend crowds battled over their square footage at various campgrounds, we shared the RV park with four other vehicles. Ahhh. Heaven in Missouri?

The weather was lovely; big puffy clouds looking an awful lot like thunderheads building. No, that must have been my imagination. It couldn't rain on our field trip.

We had arranged with Mr. Harms, the owner of the Mozarkite property, to do our rock collecting on Sunday, so we had all day Saturday to roam about the countryside. What can a person do with spare time? We found a Bass Pro Shop and purchased visitors' fishing licenses, then took a leisurely drive to Lincoln to see Harry Truman Reservoir. Since we had fishing licenses, and it would be a shame to let them go to waste, why not drown a few worms? Those Missouri fish must have known we were from Nebraska. Not even a bite. We drove back to Sedalia and visited one of the city lakes. Jim caught two catfish, nice pan size. They were yummy!

Sunday morning dawned bright and sunny. Mr. Harms had to change our rock collecting appointment to the afternoon, so we just kicked around until it was time to meet him. We followed him to Lincoln and arrived at the collecting site about the same time as the storm clouds. We hunted for a short while, then were chased into the vehicles by a brief shower. Die-hard collectors, we resumed our hunt, crawling through the trenches and wet undergrowth, digging for never-before-seen pieces of Mozarkite. Mr. Harms is a charming gentleman and he helped us select only the highest quality pieces of stone.

Suddenly, we became aware of another impending rain shower. One becomes quickly aware when the hair on one's head stands on end. Flash, kaboom! Back to the vehicles we ran, tightly gripping our treasures. Jim and I were both soaked to the skin but we didn't drop any of our precious cargo. Because we were still nervous from the previous week's storm, we had our weather radio with us. The alarm sounded and the voice within proclaimed a tornado warning to the southwest of our location. The storm was heading directly toward us. Should we stay or leave? Peering out of the windshield with the windshield wipers going full speed, we discovered that what had been a nice, dry field was now rapidly going under water. After a casual conversation with Mr. Harms, we decided it would be in the best interest of the field for us to leave. We wouldn't want to leave any ruts in the clay, and ruin the beauty of the area. We casually drove out of the field, leaving paint on the trees and shrubs that got in our way.

Naturally, once we reached the highway, which was about five miles away from the collection site, the sun was shining. That was okay, though, because we had lovely pieces of multicolored Mozarkite. The colors ranged from the typical white, pink, and yellow to a beautiful, creamy red – which I thought looked a lot like Arizona wood.

We were very happy to discover that our trailer was still parked at the campground and the "tornado warning in Sedalia" had not finished off what the Hallam Tornado left behind. There was a gorgeous and ominous obsidian sky to the east, but we sat in the sunshine. I might add, though, that the starlit, semi-full moon sky in Missouri can still send droplets of moisture through the roof vent of your trailer. Stars on one side, moon on the other side, one lonely, little cloud directly overhead. Who is sprinkling water on my face in the middle of the night?



*Sharon in full rockhounding get-up*

(Photo contributed by Sharon & Jim Marburger)

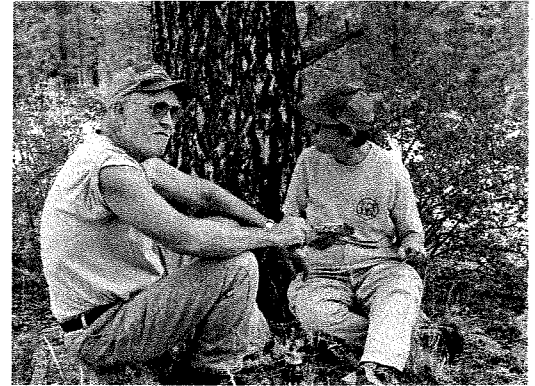
**Colorado Field Trip by President, James Marburger**

*(Photos by the Marburgers)*

The LGMC Presidential Field Trip on the weekend of July 4th started off by a phone call from Charles and Karen Messenger on July 1. They were already in Bailey, Colorado and wondered where we were! The major news from Colorado was that there had been heavy rains in the area and the road conditions were poor at best, with 4x4s needed to reach the Denver Gem and Mineral Guild's claim site. Charlie said the Subaru was working hard and did not know if a camper would be able to reach the campsite. What would the President do now?

Sharon, Betty (Sharon's mother), and I hitched up the new, 22-foot camper behind a 15 passenger, two-wheel drive van and left immediately for Colorado. Not knowing who or how many Club members and friends would be there, we knew we had to try. Upon arrival in Denver, we met up with the Blankenhaims, our guides from the Denver Guild.

With a Hi-Ho, Here we go, we were on our way up to the claim. The first section of road from Denver to Bailey was all uphill, causing the van to run very hot. With the windows rolled down and the heater on full blast to help cool the engine, we turned up the road out of Bailey, headed for the claim with roasted feet and windblown hair. The first 11 miles was on a two-lane gravel road which was driven with ease in about 20 minutes. The next 10 miles took us about 45 minutes. I heard "watch out for that big rock - tree - bump - gully", "move over", "slow down",



*Charles and Karen Messenger take a break*



*Mary is "diggin' "the fieldtrip*

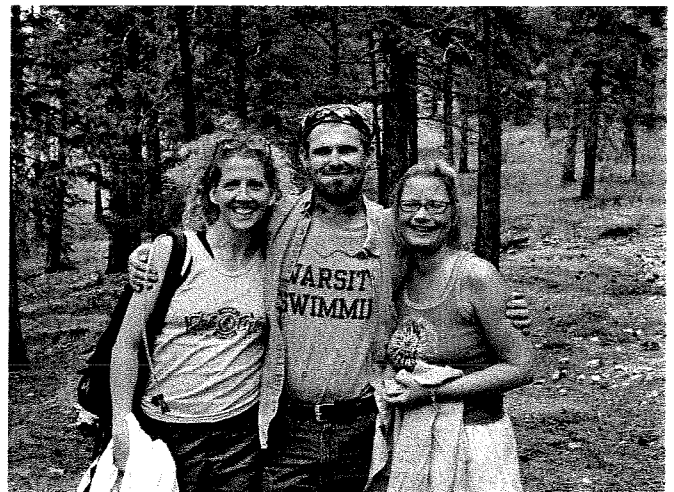
"boy, that's pretty", "maybe we should turn around", "that looks bad", "don't slow down", etc. What a trip! There were boulders and washed out sections of road and axle deep soft sand. Oh! Did I mention this was a one-lane road, just wide enough for the camper to squeeze between two trees, and washed out road gullies with oncoming traffic? Thank goodness that the people we met coming down the mountain stopped/backed up as soon as they saw us and allowed us to inch past them.

The Hayman Fire left the Guild's claim intact but where the surrounding forest had been burned, flowers and new growth abounded. Upon arriving at the claim, we set up camp and met up with the group that was already digging. This was a group of the Guild Club and the Littleton Gem Club members and Nebraska folk. Over the two days, 24 people were in attendance. There were three

members from Omaha and seven members from the Lincoln Club, including Roger & Mary Pittard.

This area of the claim produced some fluorite, smoky quartz, and Amazonite. The mountain is made up of a very weathered granite (Pike's Peak) and was fairly easy to dig in. This area produces some fine specimens, but on this trip the Rock Gods provided us only with good fellowship, good weather, a flat tire, and a great time for all.

The trip out from the claim was very easy since it was downhill and the road had been improved some to repair the washouts. With each outing, many things can be shared and learned. We all enjoyed the time together and I learned that with a camper, if you drive up on blocks to level the rig, back off the blocks (reversing your direction) when leaving. The camper now has been initiated to rock collecting.



*The smiling Omaha group*

Hints & Tips

**Do you have marcasite that's going to pieces?**

Try mixing one heaping tablespoon baking soda in one quart of water. Let it effervesce and wash the marcasite in it. Rinse well with water and dry. Then dip the marcasite in medium weight oil and drain well. Check the boxes in which marcasite specimens are stored, as they form sulfuric acid and can eat through their containers.

Author unknown; source Osage Hills Gems May 2003



**Drop of Water Test for Topaz**

Quartz and topaz are not easy to separate by eye, and are sometimes impossible when the quartz is a true topaz color. There is a big difference in price between the two and anyone describing quartz as 'topaz', however innocently, may well be in trouble.

Topaz is quite a different mineral, which is harder than quartz. Because of this, a drop of water will not spread on topaz but will spread on quartz. Clean the stone as effectively as possible with a cloth or handkerchief to remove all trace of grease. It must be dry before the test. Then place a spot of clean water on it with a thin glass or metal rod.

On stones with a hardness of less than 7 on the Mohs scale, the water is dispersed. On harder stones it will remain a globule. The harder the stone the more rounded will be the globule.

Original Source Rock Chipper, author unknown, taken from The Tumbler, Boeing Employees' Mineralogical Society, Seattle Washington, November 2003



**Fisherman's Friend**

Beaders - crimp split shot sinkers on your line to keep beads from slipping off tiger tail while you take a break from your work.

Original source Palomar Gem date unknown, author unknown, taken from the Golden Spike News, Golden Spike G&M Society, Ogden Utah, April 2004



**Candle your Montana agates** just as you would eggs. Punch a small hole in the bottom of a two-pound coffee can. Turn it upside down and place a light inside. It is surprising how the light coming through the hole will show the dendrites. This saves cutting time.

Author unknown; source The Petrified Digest Jun 1999  
(via Quarry Quips, June2004)

Places to Go, Things to Do

Sept 17-19, Denver, CO- Denver Gem & Mineral Show, 451 E. 58th Ave [www.denvermineralshow.com](http://www.denvermineralshow.com)

25-26, Schuyler, NE. , Loup Valley Gem & Mineral Society, annual show (see page 8)

Oct. 1-3, Indianapolis, IN., Treasures of the Earth Gem & Jewelry Shows, IN. State Fairgrounds

2-3, Omaha, NE., NE. Mineral & Gem Club 49th Show (see page 8)

3-4, Minneapolis, MN. -Gem & Lapidary Wholesalers, Inc. Business to Business Gem Trade Show, [www.glwshows.com](http://www.glwshows.com)



From Rockbuster News 2/85  
via T-Town Rockhound 2/99

**DIAMONDS, GEMS, AND JEWELRY (noncredit)**

If you have been thinking about buying, selling, collecting, or just simply learning more about gemstones, this is your class. This hands-on informative class about diamonds, colored stones, and pearls, is led by a certified gemologist appraiser. You will learn about origins, basic identification and what makes gems valuable. The first three classes meet on Tuesday evenings, but the last class field trip will be held Saturday morning. (Field trip discussed in class the first night.)

<b>Course Number:</b> LLLX180453		<b>Tuition:</b> \$30		<b>Room</b>	<b>Inst</b>
<u>Sec</u>	<u>Start</u>	<u>Sess</u>	<u>Day</u>	<u>Time</u>	<u>Fixter</u>
FA	Oct 19	4	T	7-9 pm	CEC

**LAPIDARY (noncredit)**

Learn the art and techniques of cutting and polishing stones. Participants supply their own stones. Beginners will learn basic instruction during the first class with materials provided. You will receive information regarding sources for purchasing future stones.

<b>Course Number:</b> LLLX112653		<b>Tuition:</b> \$50		<b>Room</b>	<b>Inst</b>
<u>Sec</u>	<u>Start</u>	<u>Sess</u>	<u>Day</u>	<u>Time</u>	<u>Pabian</u>
FA	Oct 11	8	M	7-9 pm	AULD

Diary of the Roving Rockhounds  
by Roger & Mary Pittard

April 24 -With our 5th wheel trailer in tow, we headed westward for our spring rockhounding trip. We spent the 1st weekend with our daughter & family at Hesston, KS.

April 26- Off to Jet, OK., where we met up with several friends from the roving rockhound group, including our fieldtrip leader for this area, Herb Macy. (He has a rock shop in Comanche, OK). We parked our rigs at the Great Salt Plains State Park, and the group of 12 left immediately for the collecting area. It is a unique area, covering several square miles of an old sea bed that the State Park division has fenced off into several smaller areas, and collectors are allowed to dig in a given area for the selenite blades only one season in several years. To collect the crystals, we dug a hole about a foot wide and two feet deep and allowed the water to seep into its level, which was about 8 inches below the surface. We then splashed the water against the side of the hole to expose the blades, or if you were lucky, perhaps a nice cluster. A few of them were the "hour glass" blades.

April 27- Part of our group returned to the Salt Plains, and the rest of us did a little "exploring". We found a few selenite crystals, but nothing of great importance. In the afternoon, we all embarked for Southern Oklahoma.

April 28- Our group of 9 vehicles trekked north into Oklahoma City (another unique rockhounding experience as we were well into the city limits) where we dug for barite roses in the wooded edge of the golf course at Trosper Park. When our buckets were filled, Mary and I decided we'd had enough, so we left the rest and went to the Oklahoma City Memorial which was quite stunning.

April 29 -We drove to the Lawton area where we collected "potatoes" in ditches of the county road. They were actually a type of geode, some hollow, but most having calcite crystals in the center, but they definitely looked like potatoes that ranged in size up to 7-8 inches in diameter. From there we went a few miles and collected a good number of barite balls. We didn't realize how heavy they were until we had a bagful of them!

April 30- Today we drove south to Alvard, TX. This time we were right next to a cemetery where we collected "bear claws" which are oyster fossils so plentiful that the county once used them to "gravel" the roads.

May 1- It rained hard last night, and we all needed a little rest, so we relaxed by spending the day enjoying the Chisolm Trail Celebration in Duncan, which included a parade with a herd of 40 Longhorns being driven through downtown Duncan. We also enjoyed going through the Chisolm Trail Museum, some Indian shows, and the outdoor barbecue.

May 2- Went to a fee area near Davis, OK, where we found ample brachiopods, and a few trilobites -most of them were "curled", but a few were straight. While returning to the campgrounds we stopped at Turner falls Park, a beautiful resort area.

May 3- This was a travel day to Arkansas, but we took a side trip from Colbert, OK., to Texoma Lake where we crossed the dam and collected ammonites ( some up to 20" in diameter) and sea urchins in the river below the spillway. On to Mt. Ida, Ark.

May 4-7- We collected at fee areas, a different mine each day, and Dave Millis took over as Field Trip Leader. The mines were Fiddler's Ridge, Sweet Surrender, Weagner's, and, Ron Coleman's Mine. Each site had a different type of quartz crystals. We gathered several bucketfuls; some clusters, some phantom crystals, and some "tabbies".

May 8-9- Travel days to North Carolina. We rejoined our group, including our new leader, Jim Nelson in Asheville.

May-10- We drive north about 40 miles to the Little Pine Garnet Mine where we met Richard Jacquot (author of a book on rockhounding in NC.), and he showed us how to find the garnets. Mary found some nice-sized specimens while digging in a dump!

May 11- Headed north again, this time to near Bandanna, to search for Apatite, and the searching was better than the finding! Later, we drove to the Abernathy Mine near Clearview where we had a 2 mile walk on the rail road track to the mine. The only mineral found was some coal, which we used for the wiener roast at camp that night.

May 12- On to the Crabtree Mine in search of emerald, beryl (in rock), and tourmaline.

May-13- Last true rockhounding day, to Barnardsville to the Goldsmith Mine, found some chalcedony and serpentine.

May 14th-- Headed north to spend a day with Mary's 90 year old aunt, (I only hope I'm half as active at that age! Then it was time to " go west, young man" toward NE. We had a great trip but we were glad to get home to rest up for our next rockhounding adventure...



"Looks like the Pittards are back from another rockhound trip." via *Rock Chips* 2/94

**LOUP VALLEY GEM & MINERAL SOCIETY, INC.**

Jades, Gems, Mineral Specimens, Petrified Woods, Artifacts, Fossils, Opals, Agates, Jewelry, Crystals

# Gem, Mineral & Jewelry Show

Sept. 25<sup>th</sup> & 26<sup>th</sup>, 2004  
 ST. MARY'S SOCIAL HALL  
 320 WEST 10<sup>TH</sup> STREET  
 SCHUYLER, NE

Saturday 9 a.m. to 6 p.m. Sunday 10 a.m. to 5 p.m.  
**THREE Dealers • Hourly Door Prizes • Ongoing Silent Auction**  
 DISPLAY CASES • SPECIAL EXHIBITS  
**Working Demonstrations**  
 Wire Sculpting • Spearmaking • Sphere Making  
 Lunch Stand  
 Come and Enjoy the Beauty and Wonders of the Rock World  
 Admission: Adults \$1.00 Children 12 years old and over 50¢  
 Children Under 12 Free with parent  
 Not Responsible for Loss or Accident

## ROCK SHOW AND SALE

Sept. 16 -19, 2004

Thur., Fri., Sat., 9 AM to 8 PM  
 Sunday 1 to 5 PM

1410 Ave. F, Gothenberg, Nebraska

Show Admission - \$1.00 Adults, 50 cents Kids

Exhibit of Rocks, Minerals, Lapidary Arts and Special Activities for children.

For Sale: Slabs, Cabs, Rough, Mineral Speciman, Fossils, Fossilized Bones, Garden Rocks, Polished Rocks, Spheres, Lapidary Equipment & Supplies, Jewelry Findings & Supplies and Jewelry.

For more information call:  
 (308) 537-3474 or (308) 930-0032

## Nebraska Mineral & Gem Club

49th Annual Show

October 2nd and 3rd, 2004

Westside Community Center

3534 South 108th Street

(108th and Grover Street)

Omaha, Nebraska

Saturday - 9:00 a.m. to 6:00 p.m.

Sunday - 10:00 a.m. to 5:00 p.m.

Admission: Adults - \$4.00

Students and Senior Citizens - \$2.00

Children 12 and under - Free with paying adult

## 2004 ELECTED OFFICERS

President	James Marburger	332 Locust	Hickman, NE	68372	792-2348
1 <sup>st</sup> Vice Pres.	Pat Akins, Jr.	5017 N. 6 <sup>th</sup> St.	Lincoln, NE	68521	477-1322
2 <sup>nd</sup> Vice Pres.	Roger K. Pabian	5301 X Street	Lincoln, NE	68504	465-0144
Treasurer	Vera Lyman	420 N. 56 <sup>th</sup> St.	Lincoln, NE	68504	464-6089
Secretary	Sharon Marburger	332 Locust	Hickman, NE	68372	792-2348
Board Member	David Heffelbower	1819 Washington St.	Lincoln, NE	68502	cell 890-2794
Board Member	James Atkins	3028 S. 35 <sup>th</sup> St.	Lincoln, NE	68506	483-1610
Board Member	John Harrison	330 Locust	Hickman, NE	68372	792-2337
Board Member	Judy Reilly	4050 Worthington Ave	Lincoln, NE	68502	421-3064

### Nominating Committee

3 years	Mary Pittard Phyllis N Parks
2 years	Amy Dexter-Guy Edward Ridge
1 year	John Harrison Aulden Stewart

Chairman: Immediate Past-President Susan McMahan

### Long-Range Planning & By-Laws Committee

3 years	Daniel Dexter-Guy Phyllis Parks
2 years	Susan Taylor Edward Ridge
1 year	Vera M. Lyman Roger K. Pabian

### Standing Committees

Education /Librarian:	Roger Pabian	MWF Liaison:	Vera Lyman
Field Trips:	Pat Akins, Coordinator	Scholarship:	Vera Lyman
Historian:	Susy McMahan	Christmas Party:	Edward Ridge
Membership Record:	Edward Ridge	2005 Show:	John E. Harrison
Programs:	David Heffelbower	2004 Show:	Roger Pabian
Property:	Pat Akins, Jr. & James Marburger	2005 Swap:	Roger Pittard
Youth Activities:	Kay Jurgens & Susy McMahan	2004 Swap:	Pat Akins, Jr.
Refreshments/Door Prizes:	Judy Reilly		
Housing Committee:	Susy McMahan, Pat Akins, Charles Wooldridge & Vera Lyman		
Auditing Committee:	John Harrison, Roger Pabian & James Marburger		
Geology Day Coordinator:	2nd Vice President		

L. G. M. C. web address—courtesy of Jim Atkins:

<http://incolor.inetnebr.com/jna/gemclub/lgmc.htm>

### Your PICK & SHOVEL Staff

**Publisher:** Lincoln Gem & Mineral Club, Inc., P.O. Box 5342, Lincoln, NE 68505-0342

**Editor:** **Judy Reilly** 421-3064  
**4050 Worthington Ave., Lincoln, NE 68502**  
**Email:** [jshannonreilly@aol.com](mailto:jshannonreilly@aol.com)

Circulation:	Phyllis N. Parks	476-6798
Business Reporter:	Vera Lyman	464-6089
News Reporters:	All Club Members	

The *PICK & SHOVEL* is the official publication of the Lincoln Gem & Mineral Club, Lincoln, Nebraska. Articles and items appearing within may be reproduced in other club bulletins, provided proper credit is given to the *PICK & SHOVEL* and the author and that a reprint of the bulletin is sent to the editor of the *PICK & SHOVEL*.

The purpose of this corporation shall be to study, promote an interest in, and disseminate knowledge of lapidary and various Earth Sciences including but not necessarily limited to geology, paleontology and mineralogy. It shall be a particular purpose of the corporation to provide education in these fields to its members and the general public, especially to youth and student groups.

## J. J. & L. ROCKS and MINERALS

COME SEE US FOR YOUR ROUGH NEED'S

GEMS - CABS - SLABS - MOUNTINGS  
 STERLING SILVER - GOLD FILLED - 14K GOLD  
 SILVER SUPPLIES - TOOLS - MACHINERY - NEW AND USED  
 CUSTOM SERVICES FOR SLABS, FLAT LAPPING, AND CABOCHONS

STARTING OUR 29<sup>th</sup> YEAR

330 LOCUST  
 HICKMAN, NE 68372-0068

PHONE  
 402-792-2337

"PROVIDING SUPPLIES FOR THE NOVICE TO THE DISCRIMINATING ROCKHOUND"  
 Please Call for Appointment

### LINCOLN GEM & MINERAL CLUB hosts our

47<sup>th</sup> Annual Show  
 at

PERSHING CENTER  
 226 Centennial Mall South

\*\*\* April 9 - 10, 2005 \*\*\*  
 Note: Dates changed due to Easter.

Show Chairman - John Harrison

Advertising by rock-hobby business or interest is permitted with the approval of the Board. The rate now set at \$15.00 per full page; \$7.50 per ½ page; \$5.00 per 1/3 page; and \$3.75 per 1/4 page (min) per issue, paid in advance. These ads will be placed through the bulletin as space permits.

Subscription to the Pick & Shovel is \$10.00 per year mailed.

**Dues to Lincoln Gem & Mineral Club are as follows:**

**Adults (age 16 and over) \$10 per year Juniors (age 12 to 16) \$2 per year**

**Family Membership (Couple, resident children under age 16) \$22 per year**

**New memberships must be approved by the Board, after the applicant attends at least one meeting of the club and pays the above dues plus a \$5 registration fee.**

Meetings: Fourth Thursday, Sept. through May except December & January to be announced. Held at Antelope Park Indoor Shelter, near 30<sup>th</sup> and Sumner, next to the Veterans Memorial and the children's playground.