

## CLUB EVENTS

- Jan.** 24 Swap, Antelope Park Shelter, 1-5PM. Pizza Party following SWAP, General Meeting at 7PM.  
**Feb.** 15 Geology Day, Pioneers Park 1-4PM  
 26 General Meeting, Antelope Park 7PM  
**Mar.** 27 & 28, 46th Annual Show, "Those Golden Years", Pershing Auditorium (No General Meeting in March)  
**Apr.** 22 General Meeting  
**May** 27 General Meeting  
**July** 18 Grinding Party, Pioneers Park 1-4PM

### Recap of November Meeting

Roger Pabian presented a program about trilobites. He brought specimens and informational handouts. As a follow up to the program, Roger has submitted the following:

Hope you enjoyed last month's workshop on trilobites and that you found it educational and entertaining. Since then, I've looked up a number of websites that may be of interest to you.

These are all non-commercial web sites that deal with trilobites, their origins, evolution, ontogeny (growth), paleoecology, life habits, and biostratigraphy (use in correlating rock and time units).

There are many other sites that are also quite good and links to them can be found in most of the sites below. You will be amazed at the diversity of this long-extinct organisms. You will also learn a lot more about their evolution and life habits than what we could cover in 40 or so minutes at a meeting.

Roger K. Pabian

<http://www.aloha.net/~smgon/trilobite.htm>

<http://www.ucmp.berkeley.edu/arthropoda/trilobita/trilobita.html>

<http://www.nctimes.net/~tyra-rex/t.html>

<http://wwwhttp://www.brookes.ac.uk/geology/8361/1998/kirsty/trilo.html.brookes.ac.uk>

<http://www.chez.com/quillou/>

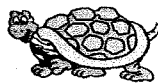
### January 24, SWAP & Meeting

SWAP 1-5PM (see flier p. 6)

Pizza dinner delivered by Valentino's-5:30 PM (\$5/person)

General Meeting 7PM

Program by Roger Pabian, to be announced



## PRESIDENT'S MESSAGE

Greetings Fellow Rockhounds!

The holiday season is upon us. Best wishes to you and your family and friends.

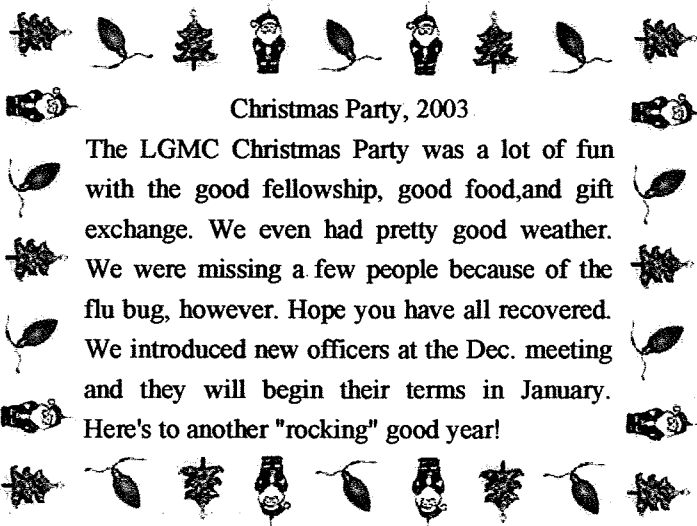
I have had the pleasure of serving as the President of the Lincoln Gem and Mineral Club for the past two years. Thank you all for the great memories. It has been exciting to see the club making changes with the times and moving forward.

I received a letter from Alan Hukill, President of the Midwest Federation of Mineralogical and Geological Society (MWF), informing me of the new State Director for Nebraska-one of our own members- Judy Reilly!!! Congratulations, Judy!

I now proudly pass the gavel to Jim Marburger, the new President of LGMC.

See you all at the SWAP.

Susy



### Christmas Party, 2003

The LGMC Christmas Party was a lot of fun with the good fellowship, good food, and gift exchange. We even had pretty good weather. We were missing a few people because of the flu bug, however. Hope you have all recovered. We introduced new officers at the Dec. meeting and they will begin their terms in January. Here's to another "rocking" good year!

### TIME IS GETTING AWAY!



It's that time again! LGMC DUES are payable by January 1, 2004. Dues will be accepted at the January meeting or by mail. Payment can be sent to: Lincoln Gem & Mineral Club, PO Box 5342, Lincoln, NE. 68505. Dues are \$10 per adult (age 16 and over), \$2 per junior (age 12-16), and \$22 per family (husband, wife & resident children under age 16). Cost of Gem Palette, the State Association Publication (four issues/year) is \$5 per household. Any member not paying 2004 dues before January 31 will be assessed a \$5 reinstatement fee. Don't let your membership lapse! We are all needed to make the club a success!

## Places to Go, Things to Do

### Regional Federation Shows

#### South Central

To Be Announced

#### Rocky Mountain

April 23-25, 2004- \Wichita, KS.

#### Midwest

April 23-25, 2004- Cedar Rapids, IA.

#### Combined California

May 28-30, 2004- Mariposa, CA.

#### Eastern Federation/ AFMS

July 7-11, 2004- Syracuse, NY.

#### Northwest

July 23-25, 2004- Boise, ID.



## WHAT'S THE BUZZ?

by Judy Reilly

I know everyone is very busy this time of year. But it's a good busy, with family visits and shopping and baking and gift wrapping... good, but tiring.

The Christmas party was a success and now everyone is gearing up for the SWAP next month. There will be lots of new activities in 2004. Any articles, reports, pictures, poems or humorous items for the Pick & Shovel are welcome.

Merry Christmas!

Judy

## Minerals From Kidney Stones

Rockhounds are often told that they have rocks in their head. It turns out that the human body does make lots of minerals. Bones and teeth are two obvious examples. We may argue that these aren't minerals by strict definition, because they are made by living organisms, not inorganically, but they are otherwise the same as minerals found in rocks.

When I was a graduate student at Indiana University, my office mates were helping with a research project on minerals in kidney stones (which are concretions technically called urinary calculi). They received daily packages of rather disgusting samples from many hospitals which they saw fit to open and analyze in my presence. One of my old office mates, Dick Gibson, wrote up a summary of the minerals they found.

The most common minerals were, not surprisingly, phosphates. These include apatite, brushite and whitlockite. Apatite is the most common mineral in many kidney stones, forming crumbly to solid whit, yellow or brownish masses. Various forms of apatite were interlayered, like layers in hailstones. Brushite occurs as tabular to bladed yellow to white crystals typical of kidney stones formed under more acidic conditions. Whitlockite forms amber to brown coatings on some stones, and is common in prostatic stones.

Two calcium oxalates, whewellite and weddellite, are abundant in kidney stones. Outside the body, these minerals are rare, found most often on the deep sea floor, in coal seams and in sedimentary nodules. In kidney stones the whewellite forms globular to radiating masses of crystals while weddellite forms sharp dipyrnidal crystals up to 5mm long (ouch).

Magnesium phosphates, such as struvite and newberryite are rare minerals generally found outside the human body only in bat guano. They are apparently deposited in kidney stones by particular bacterial infections. Struvite forms colorless crystals lining cracks in the stones formed under alkaline conditions. Newberryite forms pale green to white sphericals on the surface of some stones.

Some minerals found in kidney stones are more familiar to rockhounds. Calcite and aragonite are rare as granular material intergrown with the phosphates in kidney stones. Stones from the human pancreas are often calcites. Halite was found a few times and could be a contaminant from salty fluids in which the stones are stored during shipping. Gypsum was found 3 times as white crystals encrusting the oxalates.

Why study the materials in kidney stones? Their composition gives doctors important clues to their treatment and prevention. For example, certain people consistently produce stones of a certain mineralogy. Sometimes these stones can be dissolved or even prevented by certain treatments. anyone who have ever suffered from kidney stones knows that an ounce of prevention is worth a ton of cure!

LINCOLN GEM & MINERAL CLUB, INC. - BOARD OF DIRECTORS - Oct. 29, 2003  
November Meeting - 7:00 P.M. Kinkos, 48th & Vine, Conference Rm.

First Vice, Pat Akins called the Meeting to order in the absence of President. Judy Reilly and Ed Ridge were guests.

The October Minutes and Treasurer's report were both approved. Request by Ass't Treasurer to pay 2003 MWF Delegate gratuity and also postage for Dec. P&S. Request granted.

Treasurer requested that any 2003 Expenses and Invoices be presented by December 15.

OLD BUSINESS: Christmas Party 12-07-2003  
 Meat to be provided by Club. (Fried Chicken & Ham) Each family to bring a hot dish and/or a salad or dessert. Drinks and table service will be furnished. It will be held on Dec. 7, 2003 from 5-9 PM at Antelope Park Shelter. Supper at 5:30 PM. Details in Pick & Shovel.

STORAGE TRAILER - Pat Akins is working on interior. Jim Marburger said he has plywood for shelves, etc.

NEW BUSINESS:  
 President's Plaque to be awarded at Dec. Party. Also 2 Life Membership awards to be presented to Marie Taylor & Roger Pabian.

Approval to stay with MWF, NE Assoc. and Friends of Museum

JAN. SWAP - Get flyers into next Gem Palette. Deadline for Gem Palette is Nov. 10 (Need 210 copies of flyers)  
 Swap is January 24, 2004 from 1 - 5 P.M. at Antelope Shelter.  
 From 5 - 7 P.M. Supper hour - Valentinos.

MEMBERSHIPS: Three applicants have attended a Meeting and paid the proper dues. They are Fred McVay, and Roy & Edna Wittwer.  
 Motion for approval by Dave Heffelbower, 2nd by Jim Marburger.  
 Motion carried.

NEW RATES for Gem Palette subscriptions are \$ 5.00. There will be 4 issues in 2004.

Midwest Federation State Director has resigned. Suggested contacting Ben Vrana regarding interest in position.

MEETINGS: December Board Meeting will be held Dec. 3 at Kinkos. 7:00 P.M. at 48th & Vine. Out-going and NEW officers encouraged to attend. Also, deadline for Dec. P & S copy.

The following dates are reserved for 2004 MEETINGS:

- Saturday January 24 - SWAP/Meeting
- Thursday February 26
- March 27-28 - SHOW
- April 22, Thursday
- May 27 - Thursday (scholarship awards)
- September 23 - Thursday
- October 28 - Thursday (Halloween Party)
- November 18 - Thursday (Election)
- December 5 - Sunday (Christmas Party)

No further business, the Meeting was adjourned.

Respectfully submitted,  
*Vera Lyman*  
 Vera Lyman, Secretary

LGMC Treasurer's Report for November		
Pinnacle Bank Checking Balance on October 29, 2003		\$ 3,967.21
November Receipts:		
Three - 2004 Dealer Fees - Show		1,275.00
2004 Membership Dues		142.00
Suspense - 5 Subscriptions; GP		25.00
Pick & Shovel Ad - 2003-JJ&L		45.00
		<u>1,487.00</u>
November Payments:		
Postmaster-Dec. Postage - P & S		37.00
Phyllis Parks - MWF Delegate		100.00
Kinkos - Board Mtg - 1 Hr		10.00
Sharon Marburger - Postage-Steering Con		11.10
Judy Reilly/Office Max-Oct. Print P&S		55.50
Pershing Center-2009 Show Deposit		200.00
Rixstine's Trophy - 3 plaques		103.20
Office Max - Nov. P&S Print		49.33
Pat Akins, Jr.-Trailer/Interior fix-up		106.79
Roger Pabian - Program hand-outs		4.33
City Parks & Rec Dept-Jan 2004 Swap/Mty		165.00
		<u>842.25</u>
Pinnacle Checking Balance on November 30, 2003		\$ 4,611.96

LINCOLN GEM & MINERAL CLUB, INC. - GENERAL MEETING - Nov. 20, 2003  
7:30 P.M. at Antelope Park Shelter

18 Adults and 1 Junior member in attendance.

Meeting called to order by First Vice, Pat Akins.  
Minutes were approved with motion by Phyllis Parks, 2nd by John Harrison. Motion carried. (NOTE) Sharon Marburger was omitted from the list as a guest. Sorry, Sharon!)  
Treasurer's report was approved with motion by John Harrison, 2nd by Patti Rose. Motion carried.

NO OLD BUSINESS

NEW BUSINESS:

Reedsport Oregon Club is requesting donations from all states to make a special display case. In exchange, they will donate Oregon Rocks; i.e. Oregon State Gem = Sunstone State Rock = Thunder Egg. Pat volunteered to contact via internet.

SHOW: Roger Pabian, Chairman

Committee Chairs - Jim & Sharon Marburger - Special Features  
- John Harrison - Programs  
- Aulden & Marilyn Stewart - Ribbons & Recog.  
- Demonstrators - Brett Jurgens & Mark Renter  
- Publicity - Philip & Patrisia Rose

Roger agreed to do presentation w/Channel 10-11 if Rose's can set up.  
- Bill White - Dealer Chairman; So far 12 dealers have returned contracts.

PROPERTY: Pat Akins has been working on interior of Trailer. Will get together with Pete Crawford soon for electrical, etc.

JANUARY SWAP: Pat Akins, Chair Jan. 24, 2004 1-5 P.M. at Antelope Shelter. Followed by Valentino's Supper (with \$ 5.00 per person) General Meeting at 7:30 P.M. 2 wks prior - Communications to Public Affairs at Radio, TV and Newspaper. LPS Science Dept. Flyers in Gem Palette.

CHRISTMAS PARTY: Dec. 7, 2003 at Antelope Shelter 5-9:00 P.M. Supper at 5:30. Each family bring hot dish and salad or dessert. Club will furnish meat, drinks and table service. Gift exchange for those who wish to participate. (\$ 5.00 value and rock related).

ELECTION: The following slate presented.

Pres. -	Jim Marburger	Board;
1st Vice -	Pat Akins	Jim Atkins
2nd Vice -	Roger Pabian	C. David Heffelbower
Secretary -	Sharon Marburger	John Harrison
Treasurer -	Vera Lyman	Judy Reilly

Two nominations from floor for a 3-year term on Nominating Committee; Phyllis Parks, Mary Pittard

Since there were no additional nominations from the floor, a motion was made by Susan Taylor to accept the slate of officers by acclamation. 2nd by Dave Heffelbower. Motion carried.

Motion to adjourn meeting. Drinks & cookies enjoyed by all. Thanks Mary P. for the good cookies.

Roger Pabian presented an interesting Program on "Trilobites"! (A hands-on program; Show-and-Tell) Thanks, Roger for another excellent presentation.

Deadline for Pick & Shovel entries is DEC. 3/BOARD MEETING.

Respectfully submitted,

*Vera Lyman*  
Vera Lyman, Secretary

PS. -Meeting followed by Steering Committee Meeting for 2008 MWF Show.

# FEDERATION NEWS

MWF NEWSLETTER

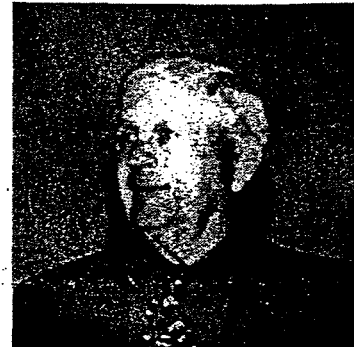
DECEMBER, 2003 Issue - 427

## Marve's Message

*from Marve Starbuck, AFMS President*

This is my first President's message...

"What is the Scholarship Foundation and how does it function?" seems to be a question in a lot of peoples minds. We receive a large number of newsletters each month and some of them have some pretty far out concepts of what the AFMS Scholarship Foundation is all about. I realize that this will be redundant to a lot of you, but for the ones that have questions, I feel it warrants space in this newsletter.



**ORGANIZATION:** The AFMS Scholarship Foundation, authorized in the Bylaws of the American Federation of Mineralogical Societies was incorporated as a Minnesota Corporation on March 17, 1964. Its members are the officers of the AFMS, totaling eighteen in number. Its members elect its Board of Directors. The management of the Foundation is vested in this board.

**PURPOSE:** The object of the Foundation is to accumulate a Fund, the income from which is to be used to finance scholarships. The principal cannot be used, hence the usefulness of the Fund is perpetual. Whatever is in the Funds keeps working year after year, indefinitely into the future. The larger it becomes, the more it can do - not only once, but time after time as years go by.

At the present time, the AFMS Scholarship Foundation awards twelve \$2,000 scholarships each year, allocating two for each regional Federation. The recipients are eligible for two years, so the AFMS is actually funding twenty-four scholarships on a yearly basis.

The Southeast Federation has their own scholarship organization that they contribute to, so therefore there are six (6) regional federations that contribute to the AFMS Fund.

Each year, members of the regional Federations solicit nominations for the AFMS Scholarship Foundation Honorary Award Winner. The Honorary Award Winners are in turn charged with selecting the scholarship recipients...two from each federation.

The Scholarship Foundation will accept donations from anybody; individual members or clubs - anyone interested can donate. As mentioned above, only the interest is used for the scholarships.

The problem of the scholarship fund embezzlement has been put to rest. The latest information on the case was reported in the October AFMS Newsletter. The fund is alive and functioning as it is supposed to. We ask for and need the support of every individual club. In the future we hope to increase our scholarship amounts. This will happen as soon as we have sufficient funds to do so.

I want to encourage clubs to make this information available to your members...don't just stick it in a pile somewhere. The fact that there are so many questions about the AFMS Scholarship is due to *lack of communication on the part of each club.*

While browsing through the 50th Anniversary Booklet of the Midwest Federation, I found this interesting little 'tidbit'... *Clubs were collecting '2 cents worth' (2 cents per member) for the new AFMS Scholarship Fund, which was made official on March 18, 1964. We'll accept your 2 cents worth, but \$2.00 would be better!*

Until next time,

*Marve Starbuck*

FROM: NOVEMBER AFMS NEWSLETTER

## On Types, Conclusion,

by Roger K. Pabian

Last time (Oct. Issue) I talked about the idea of type sections and type localities for stratigraphic rock units. There are other kinds of units in geology besides rock units such as a continuous bed of limestone. There are time-rock units, time units, and others. We will stay with rock units only. Time-rock units and time units require some specialized knowledge of fossils or radiometric or fission track dating.

At one time when I was presenting a paper at a Geological Society of America sectional meeting, I facetiously made a comment that "...no fossil specimen could be truly considered to be a holotype unless it had become hopelessly and irretrievably lost." The comment got quite a bit of laughter, but that can become the case.

In lithostratigraphy, type sections have often been designated where the rocks are exposed. This is a very logical process---a type section can't be a figment of imagination---it has to be real.

Unfortunately, most rocks are exposed in topographic lows, like in rock quarries that are near a stream, in a deep ravine cut by a stream, or some other such locality.

The quarry operator did not open the quarry to keep a type section intact. The rock is removed and eventually, all of the type section is now covering a county road, in Portland Cement, in somebody's rock wall, or whatever. If the quarry remains intact, environmental laws now require that the hole be filled in a given span of time following the abandonment of the quarry. There are a number of type localities that are now in land fills, or completely buried.

Rock units also have the nasty habit of changing facies. A simple example is of a limestone bed that grades into a calcareous shale bed, and then into a mudstone bed. The quarry operator then quits quarrying where the limestone becomes no longer useable. The section is nothing like the originally described type section. All of these things have to be taken into account when working with bedded rocks.

Construction of dam sites along major drainages have also made access to type sections difficult, except, maybe in extreme droughts, or at the peak of irrigation season. The type section is still there, but it is under 150 feet of water.

There is a stratigraphic corollary the type specimen corollary that I have come up with and that is: "...no section can be truly considered a type section until it is obliterated beyond recognition."

Subsequent workers may be able to designate new type localities for a rock unit. This is usually much easier said than done. One has to be able to prove that the new type section contains the same stratigraphic interval as the original.

In a couple of instances, I have had cores made from areas immediately adjacent to type sections and would like to treat these as "type cores" that represent the same section that is now unavailable for study.

The important thing to keep in mind is that stratigraphic units must be defined to be acceptable working units. There is a Code of Stratigraphic Nomenclature that has been published by the American Association of Petroleum Geologists, and this is an in depth reference for those who would like to learn more about both the theory and nuts and bolts of stratigraphy. (continued p.5)

(Continued from p. 4)

All of this can lead us to one final bit of rules geologists must follow when describing and interpreting both fossils and rock units. This is **orthography**, or “original spelling.”

When N. H. Bengtson and G. E. Condra described many of the Pennsylvanian and Permian rocks of southeastern Nebraska, they named a couple of units the Kiewitz Shale for a quarry along the Lower Platte River Valley, and the Bennet Shale for the village of Bennet in southeastern Nebraska.

The first problem is that the type Kiewitz Shale was exposed in the Kiewit Construction Company Quarry. The originally published name was Kiewitz Shale, however.

The second problem is that the name of Bennet, Nebraska, only has one final “t”, but the originally published name has two final “ts”.

The names Kiewit and Kiewitz and Bennet and Bennett appeared in the literature, much to the confusion and chagrin of readers and researchers. Are the two names for each different areas, or how do I spell it when I submit my manuscript?

Raymond C. Moore published a paper dealing with orthography and suggested that the original spelling always be used. Kiewitz Shale should always be spelled with the “z” and Bennett Shale always spelled with the two final “ts”. Moore cited other examples. This practice has become accepted in stratigraphy, and is also followed in paleontology.

For example, crinoid workers in the late 1920’s began using the suffix “*crinus*” for generic names of crinoids that were originally spelled out with the suffix “*crinites*”, and they did this with a gentlemen’s

agreement. The Inter-national Commission of Zoological Nomenclature put the kibosh on this move and the names must be used as they were originally spelled.

The gentlemen’s agreement has no place in scientific research. An agreement between the Nebraska and Kansas Geological Surveys that the boundary between the Missouri and Virgil series of late Pennsylvanian age has no meaning since it only appeared in an unpublished letter between the two agencies.

We can apply the same rules to such things as agates, too, where A. C. Lane actually used the term Lake Superior Agate for agates in a given stratigraphic interval on the Keweenaw Peninsula in Michigan.

The word *type* as a modifier is used frequently, but usually incorrectly. The correct usage of the modifier *type* will hold up in scientific as well as legal matters. Beware of those who misuse the word.

I hope you’ve gained a bit of useful knowledge from this.

---

#### Hints and Tips

Polishing Oregon (or any other) Picture Rock: After cutting, sand on the 220 grit sander, then move to the 600 grit sander; polish with cerium oxide. Use no water to wet the sheet at first polish. Spray the wheel with a diluted solution of cerium oxide and polish lightly, without pressure until you have worked it dry. Then wet the wheel again and work until the stone becomes dry again. Final polish is brought out by spraying the wheel with cerium oxide and working, keeping wet about two minutes. ash and dry off your cab or picture. This will produce a beautiful finish!(Author Unknown)

From Quarry Quips, Nov. ,2003 via The Geode,May, 1999

# Lincoln Gem and Mineral Club

Proudly Presents

Its

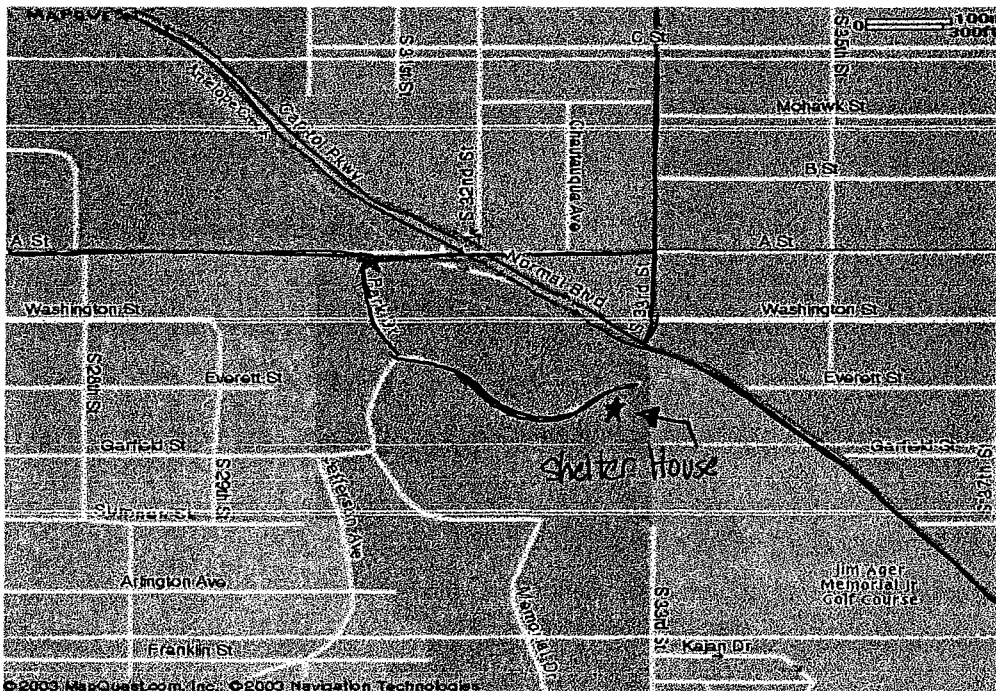
26<sup>th</sup> Annual

Gem and Mineral Swap

Saturday January 24<sup>th</sup>, 2004

Hours: 1:00 P.M. to 5:00 P.M.

Location: Antelope Park Shelter House  
(Same place as last year)



All buyers must use  
Swapper Bucks  
Available at the door.

Buy, Sell, or trade: Rocks, Minerals, Fossils, Finished Gemstones, Rough Gemstones, Crystals, Beads, Books, Equipment, Supplies and any other gem and mineral related materials.

Admission: Swappers with tables should provide materials for silent auctions. Proceeds go to the Lincoln Gem and Mineral Club's Lapidary Education Fund.

The swap will be followed by the general meeting of the Lincoln Gem and Mineral Club at 7:30 P.M. Visitors are welcome to both events.

## 2003 ELECTED OFFICERS

President	Susy McMahan	5636 Greenwood St.	Lincoln, NE	68507	464-0065
1 <sup>st</sup> Vice Pres.	Pat Akins, Jr.	5017 No. 6 <sup>th</sup> St.	Lincoln, NE	68521	477-1322
2 <sup>nd</sup> Vice Pres.	James Marburger	330 Locust	Hickman, NE	68372	792-2348
Secretary:	Vera Lyman,	420 N. 56th St.	Lincoln, NE	68504	464-6089
Treasurer:	Phyllis Parks	2345 So. 19th St.	Lincoln, NE	68502	476-6798
Board Member	David Heffelbower,	1819 Washington St.	Lincoln, NE	68502	cell 890-2794
Board Member	James Atkins	3028 So. 35th St.	Lincoln, NE	68506	483-1610

### Nominating Committee

3 years	Amy Dexter-Guy
	Edward Ridge
2 years	John Harrison
	Aulden Stewart
1 year	Judy Reilly
	David Heffelbower

Chairman-Immediate Past President James N. Atkins

### Long Range Planning & By-Laws Committee

3 years	Susan Taylor
	Edward Ridge
2 years	Vera M. Lyman
	Roger K. Pabian
1 year	Charles Wooldridge
	Kevin Schwartzman

### Standing Committees

Education / Librarian	Roger Pabian	MWF Liaison:	Vera Lyman
Field Trips:	Pat Akins, Coordinator	Scholarship:	Vera Lyman
Historian:	Susy McMahan	Christmas Party	Edward Ridge
Membership Record:	Edward Ridge	2005 Show:	John E. Harrison
Programs:	Roger Pabian	2004 Show:	Roger Pabian
Property:	Pat Akins, Jr.	2003 Swap	David Heffelbower
Youth Activities:	Kay Jurgens & Committee	2004 Swap:	Pat Akins, Jr.
Refreshments & Door Prizes	Judy Reilly		
Housing Committee:	Susy McMahan, Pat Akins, Charles Wooldridge & Vera Lyman		
Auditing Committee:	John Harrison, Roger Pabian, James Marburger		
Geology Day Coordinator :	2nd Vice President		

L. G. M. C. web address—courtesy of Jim Atkins:

<http://incolor.inetnebr.com/jna/gemclub/lgmc.htm>

### Your PICK & SHOVEL Staff

<b>Publisher:</b>	Lincoln Gem & Mineral Club, Inc., P.O. Box 5342, Lincoln, NE	68505-0342
<b>Editor:</b>	Judy Reilly	421-3064
<b>Circulation:</b>	Phyllis N. Parks	476-6798
<b>Business Reporter:</b>	Vera Lyman	464-6089
<b>News Reporters:</b>	All Club Members	

The *PICK & SHOVEL* is the official publication of the Lincoln Gem & Mineral Club, Lincoln, Nebraska. Articles and items appearing within may be reproduced in other club bulletins, provided proper credit is given to the *PICK & SHOVEL* and the author and that a reprint of the bulletin is sent to the editor of the *PICK & SHOVEL*.

The purpose of this corporation shall be to study, promote an interest in, and disseminate knowledge of lapidary and various Earth Sciences including but not necessarily limited to geology, paleontology and mineralogy. It shall be a particular purpose of the corporation to provide education in these fields to its members and the general public, especially to youth and student groups.

## J. J. & L. ROCKS and MINERALS

GEMS - CABS  
ROUGH - SLABS - MOUNTINGS  
STERLING SILVER - GOLD FILLED - 14K GOLD  
SILVER SUPPLIES - TOOLS - MACHINERY - NEW AND USED  
CUSTOM SERVICES FOR SLABS, FLAT LAPPING, AND CABOCHONS

STARTING OUR 28th YEAR

330 LOCUST  
HICKMAN, NE 68372-0068

PHONE  
402-792-2337

"PROVIDING SUPPLIES FOR THE NOVICE TO THE DISCRIMINATING ROCKHOUND"  
Please Call for Appointment

### LINCOLN GEM & MINERAL CLUB

hosts our

46<sup>th</sup> Annual Show

PERSHING MUNICIPAL AUDITORIUM

March 27 - 28, 2004

"THOSE GOLDEN YEARS"

Show Chairman - Roger Pabian

Advertising by rock-hobby business or interest is permitted with the approval of the Board. The rate now set at \$15.00 per full page; \$7.50 per 1/2 page; \$5.00 per 1/3 page; and \$3.75 per 1/4 page(min) per issue, paid in advance. These ads will be placed through the bulletin as space permits.

Subscription to the Pick & Shovel is \$10.00 per year mailed.

Dues to Lincoln Gem & Mineral Club are as follows:

Adults (age 16 and over) \$10.00 per year Juniors (age 12 to 16) \$2.00 per year

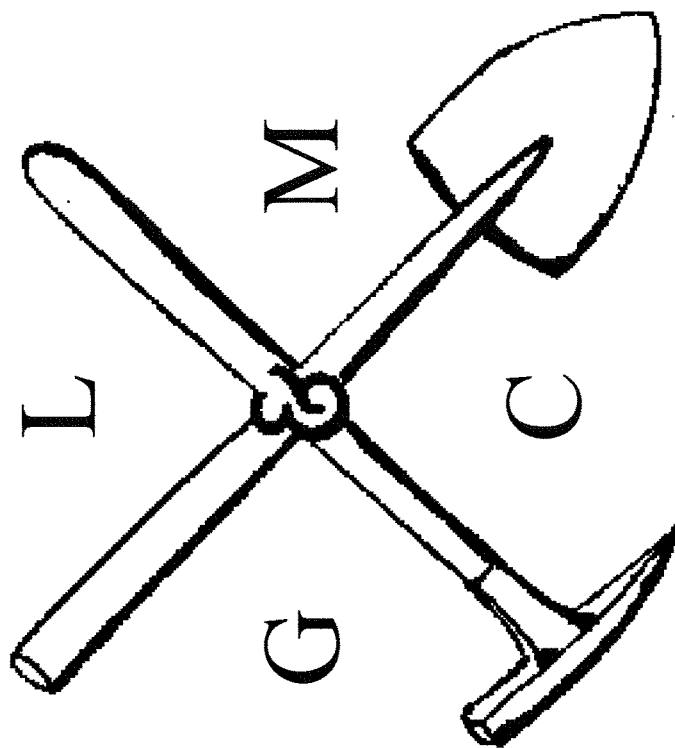
Family Membership (Husband, wife, resident children under age 16) \$22.00 per year

New memberships must be approved by the Board, after the applicant attends at least one meeting of the club and pays the above dues plus a \$5.00 registration fee.

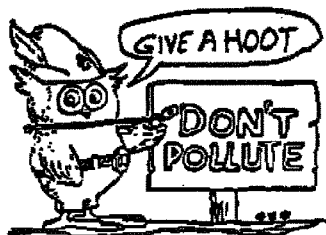
Meetings: Fourth Thursday, Sept. through May except December & January to be announced. Held at Antelope Park Indoor Shelter, near 30<sup>th</sup> and Sumner.

# THE PICK & SHOVEL

December 2003



OFFICIAL PUBLICATION OF  
LINCOLN GEM & MINERAL CLUB  
LINCOLN, NEBRASKA



Mail Exchange Bulletins To:

Lincoln Gem & Mineral Club  
Box 5342  
Lincoln, Nebraska 68505-0342



## H. E. L. P.

Help Eliminate Litter Please

Associated with



*Historian*