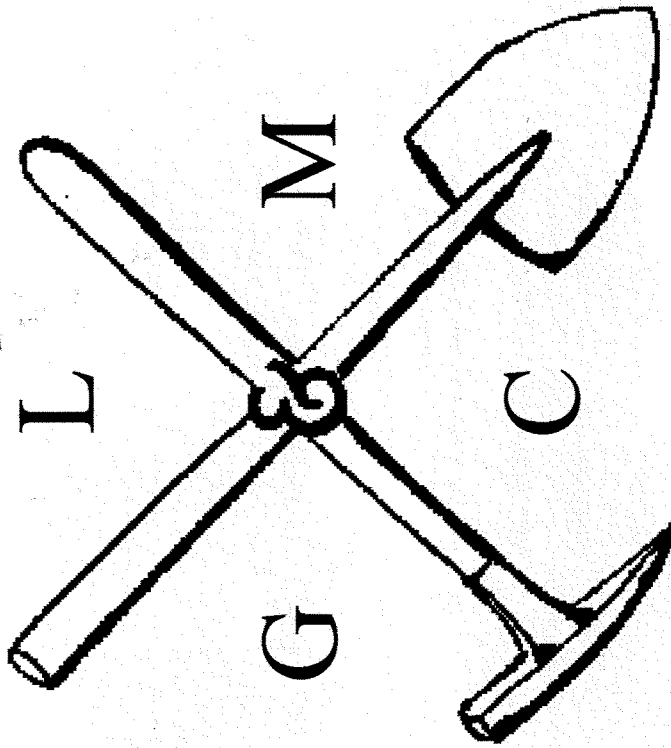
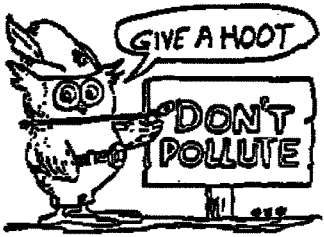


THE PICK & SHOVEL

November 2003



OFFICIAL PUBLICATION OF
LINCOLN GEM & MINERAL CLUB
LINCOLN, NEBRASKA



Mail Exchange Bulletins To:

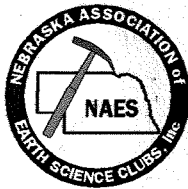
Lincoln Gem & Mineral Club
Box 5342
Lincoln, Nebraska 68505-0342



H. E. L. P.

Help Eliminate Litter Please

Associated with



Historian

CLUB EVENTS

- Nov.** 20 General Meeting & Election of Officers, Antelope Park Shelter-7PM
- Dec.** 3 Board Meeting, Kinko's 48th&Vine, 7 PM.
7 Christmas Party/ Meeting, Antelope Park Shelter, 5-9 PM
- Jan.** 24 Swap, Antelope Park Shelter, 1-5PM. Pizza Party following SWAP, General Meeting at 7PM.
- Feb.** 15 Geology Day, Pioneers Park 1-4PM
26 General Meeting, Antelope Park 7PM
- Mar.** 27 & 28, 46th Annual Show, "Those Golden Years",Pershing Auditorium (No General Meeting in March)
- Apr.** 22 General Meeting
- May** 27 General Meeting
- July** 18 Grinding Party,Pioneers Park 1-4PM

Recap of October Meeting

The Halloween Party/ Dessert Supper was a great success. Several people wore costumes and we all made guesses as to what they were.) Talia had a great costume-an elephant with binoculars (Mammoth Site). Phyllis Parks was all decked out in green as "jade", Sharon Marburger was "Silver Chain" and Jim was her "Precious Wire-Wrapped Gem (Jim)". Dave Heffelbower was "Moss Agate", Susy McMahan was "Rockhound" and Judy Reilly & Shirley Rockel were "Halloween Jasper" Everyone brought and sampled many scrumptious desserts.

The Fossil Identification Quiz was a lot of fun. Winner of most fossils correctly identified was Michelle Crawford. Michelle tied for the most correct answers with Dan Dexter-Guy but won in a double tie-breaker. Her prize-free club membership for 2004.

The Silent Auction earned nearly \$30 for the Lapidary Class Fund.

November Meeting

Program: Slide presentation: "Trilobites-Gone, But Not Forgotten" by Roger Pabian.
Election of 2004 Officers: Nominations accepted from the floor.

Treats: Mary Pittard



PRESIDENT'S MESSAGE

Greetings fellow rockhounds!!

The Holiday season is upon us and because of Thanksgiving our November meeting will be on Thursday November 20 at the Antelope Park Shelter, 7:00pm. **I WILL BE IN FLORIDA** (yes, I am screaming with glee) with my husband and daughter Rose, enjoying the beach and attractions.

I will see you at the Holiday Party on Sunday December 7. Look elsewhere in the P&S for more info on these upcoming meetings.

Elections for officers will be held at the November meeting, and further nominations may be taken from the floor.

Bring a favorite item to the November meeting for show & tell. See you in December!

Warmly (me anyway!)

Susy

DUES ARE DUE!!!!



It's that time again! LGMC dues are payable by January 1,2004. Dues will be accepted at any meeting prior to January 31 or by mail. Payment can be sent to: Lincoln Gem & Mineral Club, PO Box 5342, Lincoln, NE. 68505. Dues are \$10 per adult(age 16 and over), \$2 per junior (age 12-16), and \$22 per family (husband,wife & resident children under age 16). Cost of Gem Palette, the State Association Publication (four issues/ year) is \$5 per household. Any member not paying 2004 dues before January 31 will be assessed a \$5 reinstatement fee. Don't let your membership lapse! We are all needed to make the club a success!

Who Will the 2004 Officers BE?

Elections will be at the meeting Thursday, November 20 at Antelope Park Shelter. Please be there to nominate anyone of your choice and **VOTE! VOTE! VOTE!**



Places to Go, Things to Do

Nov. 14-16 Boulder, CO., Flatirons Mineral Club Annual Gem & Mineral Show. Contact Gerry Naugle: 303-591-2830 or gnaugle@earthlink.com.

Nov. 29-30 Minneapolis, MN. Ankora County Gem & Mineral Club Show. Contact Catherine Cummings: 651-487-2690 or www.catonrj@juno.com.

Regional Federation Shows

Southeast

November 28-30, 2003- Roanoke, VA.

South Central

To Be Announced

Rocky Mountain

April 23-25, 2004- Wichita, KS.

Midwest

April 23-25, 2004- Cedar Rapids, IA.

Combined California

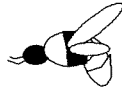
May 28-30, 2004- Mariposa, CA.

Eastern Federation/ AFMS

July 7-11, 2004- Syracuse, NY.

Northwest

July 23-25, 2004- Boise, ID.



WHAT'S THE BUZZ? by Judy Reilly

I'll keep this short. I want to thank Phyllis Parks, Circulation Editor for taking care of the covers for the Pick & Shovel each month. This time, she outdid herself. In addition to printing the cover, she and Vera Lyman volunteered to have the newsletter printed, collated, stapled and mailed. For this I am very grateful as I am driving to Ohio tomorrow morning to visit my sister. Among other things, we are going to the Rock & Roll Museum in Cleveland. (I like all kinds of rock!) So have a great week and I'll see you all at the meeting Nov. 20.

Please welcome the following new members and add them to you Who's Who:

Roy and Edna Wittwer, 2308 Mc Connell Ave., Auburn, NE 68305. Phone 402-274-5884, cell 402-239-1388. Roy's interest is carving. He and Edna were active members of the Mesa, Arizona Club for eight years.

Fred McVay, 6724 S. 41st St., Lincoln, NE. 68516. Phone 421-6724. Fred's interests are tumbling rocks, sawing rocks, fossils, swaps, and minerals. He became interested in the hobby after vacationing in Lake Superior last summer.

Got Old Jeans? Make a Nifty Gift For Your Favorite Rockhound

By Linda Jaeger TRMS

Every rockhound can use a rock bag, and this one is as washable as your jeans. You will need: Old jeans (boys size 12-18 are good), scissors, thread to match the jeans, zigzag sewing machine, black pencil, and straightedge (ruler).

Place the jeans on a flat surface with the seat side up, so you can see the back pockets, making sure the waist is together at front and back. Use the ruler and pencil to mark a line across each leg about 3 inches below the back pockets. Carefully cut off each leg by following your line. From the legs, cut two strips, each about 5 inches wide and 24 inches long. The strips will make the strap.

Turn the seat part of the jeans wrong side out and stitch across each of the legs with a 1 inch seam. Stitch again about 1/4 inch from the first seam, with a zigzag stitch, and then trim away the excess seam allowance. Turn the jeans right side out.



Now, seam the 2 inch long strips together along the 5 inch side with right sides together. Fold in half lengthwise, right seams together, and stitch again, making a casing. Turn the casing right side out. Press flat.

Find the left belt loop on the jeans. Place one end of the strap inside the waistband, just behind the loop. Stitch through the strap at the top of the waistband and at the bottom of the waistband. Place the other end of the strap inside the waistband, just in front of the right belt loop. Stitch through the strap and waistband at the top and bottom of the waistband.

Be sure to zip up the zipper and button or snap the waistband and this bag is ready for rocks! To make an extra special gift, tuck a state map in one of the back pockets and a small notebook and pen in the other. Add a compass, whistle, and small specimen bags to the front pockets, and toss in a section of newspaper and a small spray bottle too. Feeling really generous? Take your friend and his new rock bag to your favorite spot to hunt. via *Chip&Lick* 10/2003, via *Gr. Cinti Lapidary & Faceting Society* 7/03, via *Quarry Quips* 6/ 2003, via *T-Town Rockhound*, *Tulsa R&M Society* 12/99.

LINCOLN GEM & MINERAL CLUB, INC. - BOARD OF DIRECTORS - Oct. 1, 2003
 7:00 P.M. Kinkos, 48th & Vine - Conference Rm

5 Board Members - John Harrison, Ed Ridge

The Meeting was called to order by 1st Vice, Pat Akins in the absence of President.

The Minutes were approved with motion by Jim Atkins, 2nd by Phyllis Parks. Motion carried.

The Treasurer's report was approved with motion by Dave Heffelbower, 2nd by Jim Atkins. Motion carried.

OLD BUSINESS: None

NEW BUSINESS: The State Association Meeting at the Omaha Show Oct. 4 & 5. One of our Delegates to request permission to host State Show in 2004 and also in 2008, in conjunction with MWF Show.

Also, an error in Gem Palette; dues to MWF are \$ 2.00 per adult.

Request for a one-time Ad in the Pick & Shovel by Sheryl Matthes. It is all lapidary and rock related material. Paid \$ 5.00 cash for same. Motion by Phyllis Parks to permit, 2nd by Jim Atkins. Motion carried.

NOMINATING Committee: List of nominees to be printed in Pick & Shovel.

SHOW: No report - Treasurer reported that 7 dealers were contracted.

STORAGE: (Trailer)

Pat Akins and committee are fixing interior for Black Light Display, and storage of Club properties. Motion by Phyllis Parks, that Pat and whoever helps, when they get ready to clean present storage site, to dispose of unneeded and unwanted items. Take written inventory of items put in trailer and make 4 copies (Property Chair, Secretary, Treasurer, and one in trailer at all times.) 2nd to motion by Jim Atkins. Carried.

October Meeting - Dessert Supper and "Rock related costumes".
 Board Meeting scheduled for Nov. 5, 2003 7:00 P.M. at Kinkos.

Meeting adjourned.

Respectfully submitted,

Vera Lyman

Vera Lyman, Secretary

LGMC Treasurer's Report for October

Pinnacle Checking Balance on September 30, 2003 \$ 2,711.66

October Receipts:

Four - 2004 Dealer Fees - Show	1,700.00	
Silent Auction-10/23 Mtg - (SLCEF)	29.75	
2004 New Member-Fred McVay	15.00	
2004 New Member-Roy/Edna Wittwer	<u>25.00</u>	1,769.75

October Payments:

Kinkos - Board Mtg - 10/1	10.00	
Lanc. Co. Treas. -		
Title, Lic, Sales Tax on Trailer	394.11	
City Parks & Rec - 2% on Si. Auc. 10/23	.60	
(SLCEF)		
Roger Pabian-Show 2004-Postage/Flyers	36.52	
Roger Pabian - SLCEF Equipment repair	<u>72.97</u>	514.20

Pinnacle Checking Balance on October 29, 2003 \$ 3,967.21

LINCOLN GEM & MINERAL CLUB, INC. - GENERAL MEETING - Oct. 23, 2003
7:30 P.M. @ Antelope Park Shelter House

The Meeting was called to order by Pres. McMahan and opened with the Pledge of Allegiance.

There were 27 members in attendance, and 5 guests.

Gavin, son of Dan & Amy Dexter-Guy; Talia, daughter of Kevin Schwartzman; Fred McVay; Roy & Edna Wittwer.

Fred McVay and Roy/Edna Wittwer applied for membership.

Minutes of the previous Meeting were approved as printed with motion by John Harrison, 2nd by Dave Heffelbower. Motion carried.

Treasurer's report approved as printed with motion by Jim Marburger, 2nd by Sharon Marburger. Motion carried.

BUSINESS: Approval of By-Laws Change as printed in Pick & Shovel. Motion to rescind or reverse the By-Laws change in Article II, Section I, limiting the number of elected Board Members to two, which was approved in September, 2001, thus we would be returning the number to four to be elected.

Motion to approved the By-Laws change by Phyllis Parks, 2nd by Dave Heffelbower. Motion carried.

SHOW REPORT: Roger Pabian, Chairman

Ten of fourteen dealer contracts have been returned. Demo contracts are out. Mark Renter is doing non-selling, and Brett Jurgens is doing selling contracts. John Harrison is in charge of Programs; Bill White, dealers; Phil & Patti Rose, Publicity.

HALLOWEEN COSTUMES: "Mammoth Site" - Talia, "Jade" - Phyllis Parks, "Wire wrapped gem" - Jim Marburger, "Silver Chain" - Sharon Marburger; "Halloween Jasper" - Judy Reilly & Shirley Rocked. Thanks! (Article on Halloween Jasper in 1967 Lapidary Journal)

PROGRAM: Roger, Chairman

Fossil Identification Quiz - Dan Dexter-Guy and Michelle Crawford had to play a double tie-breaker. Michelle won. Congratulations! She receives her membership in Club for 2004 as prize.

Next General Meeting is Nov. 20, 2003 at 7:30 P.M. Mary Pittard has volunteered to bring Cookies. Remember, it is election night, so please plan to attend.

The evening closed with the Silent Auction, which netted \$ 29.15 for the Special Lapidary Class Fund.

Everyone enjoyed the delicious desserts and fellowship.

Respectfully submitted,

Vera Lyman

Vera Lyman, Secretary

THE MEANING OF BIRTHSTONES: Most people know the birthstone list, but how many know what each birthstone stands for? The Jewelry Industry Council, in an effort to support the popularity of birthstones, has been publicizing the following list:

January's garnet, "constancy"

March's aquamarine, "courage"

May's emerald, "success"

July's ruby, "contentment"

September's sapphire, "clear thinking"

November's topaz, "fidelity"

February's amethyst, "sincerity"

April's diamond, "innocence"

June's pearl, "health"

August's peridot, "wedded bliss"

October's opal, "hope"

December's turquoise, "prosperity"

via: Lapidary Journal 1993

FEDERATION NEWS

The following is from the November, 2003 MWF Newsletter Page 10

\$200,000 COLLECTION RECEIVED AT SEAMAN MUSEUM

I received the following e-mail from JIM EDWARDS, Past President of MWF...

OCTOBER 6, 2003 -- Michigan Tech's A. E. Seaman Mineral Museum has received a portion of the Gene and Rosalind Meieran Mineral Collection valued at \$200,000. The gift includes more than 200 specimens donated by Andrew and Christy Meieran, the son and daughter-in-law of Gene and Rosalind Meieran. Some highlights include an elegant 20-centimeter crystal of smoky quartz enrobed with rose quartz crystals from Brazil and a stunning group of emerald crystals up to 7 centimeters long from Russia. A portion of the gift is on display in the museum's Hampel Gallery. The museum, located in the Electrical Energy Resources Center at MTU, is open to the public 9 a.m.-4:30 p.m., Monday-Friday. Admission is free. Andrew Meieran has been fascinated by minerals and crystals from an early age, often accompanying his father on collecting trips in the US and abroad. The collection he and his wife have donated to the Seaman Museum includes many international specimens and unique crystals that had been in his father's collection, accumulated over more than 50 years. The Arizona Mineral Museum and Harvard Mineral Museum also include specimens donated by the Meierans. Gene Meieran, a research fellow with the Intel Corporation, said the family chose the Seaman Museum to receive their collection "because it combines two important aspects of mineral collecting: display of fine specimens in a way that captivates the visitor, and scientific interest illustrating both the nature of the specimens and their relation to economy, ecology, science, technology." Meieran said the museum's association with a university was also key. "The Seaman Museum obviously fulfills a role unlike a museum that just shows pretty rocks," he said. "Plus, in terms of display, the museum is very good," he added. "The specimens are easily seen; they are well arranged; the labels are good; the logic is good. "So, Seaman obviously comes to mind when one wants to put specimens into a museum with some 'clout.'" Andrew and Christy Meieran live in Hollywood, where Andrew is involved in building restoration, including the restoration of Charles Chaplin's original house in Hollywood, where he and Christy will reside. Christy is a teacher.

[MTU Homepage](#) / [MTU News](#) / [Search MTU News](#) [Back to Top](#)

THE REAL WEATHER PICTURE?????

Meteorologists make weather conditions seem more complicated than they actually are. They fuss with weather maps and go on and on about high-pressure areas and slow-moving cold fronts. In truth, weather is very easy to understand once you grasp a few fundamental facts, all of which are based solidly on the Law of "Cause & Effect".

RAIN is caused by going rockhunting, overnight camping expeditions, golf tournaments, Sunday picnics, weddings on the terrace, and washing windows.

DRY SPELLS are caused by newly planted shrubs and lawns.

RUST MINERALS

Bill Cordua, U. of W. - River Falls
Leaverite News

Iron oxides are extremely common minerals. Even people who don't collect minerals own many examples. Collecting trips to the famous iron ranges (the Cuyuna Range near Brainerd, MN, the Mesabi Range of Hibbing and Virginia, MN, or the Gogebic Range near Hurley-Ironton WI and MI.) turn up many fine specimens of iron oxides -primarily hematite (Fe_2O_3) and goethite ($\text{FeO}(\text{OH})$).

Hematite gets its name from the Greek word for "blood" and was described as a mineral as early as 325 B.C. It is often found as red earthy masses. Some hematite is steel gray to black and can be very sparkly. Nearly black platy or sparkly material is called "specular hematite". Hematite also forms stalactitic, botryoidal (bubbly) or reniform (kidney-like) masses made of parallel groups of skinny radiating crystals. Some long coarsely fibrous hematite breaks in splintery masses known as "needle ore".

Goethite gets its name from the German philosopher and poet Goethe, who, in addition to writing such monumental works as Faust, made studies in geology and mineralogy. I've heard goethite pronounced many ways. I prefer pronouncing it "*Gerthite*". Fortunately for written articles such as this, it doesn't matter how you pronounce it -it's always spelled the same. Goethite usually forms yellow, brown or orange earthy masses. It can also form very dark brown coatings of drusy crystals known as "velvet ore". It can be stalactitic, botryoidal to reniform massive with radiating coarsely fibrous crystals. Caution: these crystals can give one nasty splinters!

The best way to tell these two mineral apart is to use a streak plate. Hematite will give a dark to cherry red streak (powder) when rubbed across a piece of unglazed porcelain. Goethite will give a yellow, yellow-brown or orange-yellow streak.

Limonite is a general term given to earthy mixtures of iron oxides, mostly goethite. Limonite's streak depends on the proportion of hematite to goethite present in the mixture.

Despite all the iron in them, neither mineral is magnetic. If your samples are magnetic, it is probably because there is black magnetite (Fe_3O_4) present. Magnetite gives a black streak. When intermixed with hematite or goethite, it will darken their streak.

Occasionally one will find black crystals, botryoidal masses or earthy material that is not magnetic, but does give a black streak. These are likely manganese oxides (i.e. pyrolusite, romanechite, manganite) They are particularly common in the Cuyuna and Gogebic Ranges.

Other iron oxides are known, but are rare. Goethite has three relatives that have the same chemical formula but different internal structures. These are *lepidochrocite*, *akaganeite* and *feroxyhyte*. All of these look similar to goethite, and are easily misidentified. They are probably thus more common than is generally thought.

So which iron oxides are forming on the fenders of your car?

★

How can you get rid of the iron stains on your ~~other~~ rocks?

Try *Iron Out!*

Members of various clubs have found that it removes stain from quartz, dolomite, fire agate, chalcedony roses, some amazonite, ceramics, cloth, and carpet. *Super Iron Out* works better than bleach does on rust because bleach oxidizes iron which turns to rust. *Super Iron Out* de-oxidizes iron into a clear solution that easily rinses away and will not harm fabric as bleach does.

★

HOW TO KILL AN ORGANIZATION

Don't come to meetings.

If you do come, Be late!

If the weather doesn't suit you, don't think of coming!!

If you attend, find fault with the work of others

Never accept an office.

It's easier to criticize.

Be angry if you are not appointed to a committee.

If your opinion is asked, say nothing.

Afterward, tell everyone how it should have been done.

Do no more than necessary.

If a few people work tirelessly, complain that the group is being run by a clique.

Don't tell the leader how the group can help you achieve certain goals.

But if it doesn't, quit coming.

When you attend a meeting, vote for one thing then forget about it after you get home.

Agree to everything at the meeting, disagree later.

Get all the benefits your organization provides, but don't make a personal contribution.

Talk about co-operation, but never practice it!

(From MID-TENN GEMMERS)

ED'S NOTE: It seems like all of our clubs are having trouble getting the willing volunteers to do our work. Even if this item doesn't fit "your personal style", it's something each of us should give some thought to and then COME ON OUT AND VOLUNTEER!

There Are Gems In Those Hills

Canadian jewel hunters say they have discovered tantalizing blue gems on a hillside in the Yukon that are potentially more valuable than emeralds. The transparent stone, the colour of blue velvet, could be a new gemstone, according to a federal agency that described the find as a jaw-dropping discovery.

If they are not unique, geologists say they could be the next best thing -- the world's second occurrence of maxixe, a deep blue beryl, in the same family of minerals as emeralds. It has only been found once before, in Brazil. While plenty of people are talking about the glittering crystals, few people have actually seen them.

The blue stones were discovered earlier this summer at a secret location in south-central Yukon. The Natural Sciences & Engineering Research Council provides funds for research to Uni. of British Columbia geologist Lee Groat and some of the students who are part of the team that found the glittering blue rocks. The field crew found the gems in a half-kilometer site on a rocky hillside.

The crew was literally picking them up off the ground; most of the blue crystals were found in rocks covered with lichens. The crew is also criss-crossing the hillside turning rocks over and trying to locate the source of the gems. The blue crystals which measure a millimetre to 2.5 centimetres across, are said to range in colour from pale blue to sapphire blue to pale green. Some appear to be a combination of green and blue which makes them very unusual.

-- M. Munro, *Regina Leader Post*, Aug. 2003, via PRAIRIE GEM, bulletin of the Prairie Rock & Gem Society of Regina, Sask., Canada

Hints & Tips



Cleaning Geodes

Save all your remnants of bars of soap. Put them into a plastic container. When you are lapping or facing a slab or geode that has a vug of crystal, soak the soap to a thick paste and fill the vug. When you have completed the lapping process, use a brush to wash out the soap. This will eliminate grit or slurry from filling the crystals.

Author unknown, source Golden Spike News Golden Spike G&MS Ogden UT, June 2003



Cutting Geodes in the right place can be tricky: Try rolling the geode on a flat floor several times and mark the "up" side each time. Then cut on a plane parallel with the floor. Crystal growth inside the geode is probably most developed at the top and bottom of its resting position.

Author unknown, source Toledo Bend Gems Jan 2003



we Quarry Quips

WISE OLD FARMER

A wise old farmer went to town to buy a pickup truck that he saw advertised in the paper for a certain price. After telling the salesman which truck he wanted, they sat down to do the paperwork. The salesman handed the farmer the bill, and the farmer declared, ~This isn't the price I saw!"

The salesman went on to tell the wise old farmer how he was getting extras such as power brakes, power windows, special tires etc. and that was what took the price up. The farmer needed the truck badly, paid the price and went home.

A few months later, the salesman called up the farmer and said, 'My son is in 4-H and he needs a cow for a project. Do you have any for sale?' The farmer said, "Yes, I have a few cows, and I would sell for \$500.00 apiece. Come look at them and take your pick."

The salesman said he and his son would be right out. After spending a few hours in the field checking out all the farmer's cows, the two decided on one and the salesman proceeded to write out a check for \$500.00. The farmer said" Now, wait a minute, that's not the final price of the cow. You're getting extras with it and you have to pay for that too. ""What extras?" asked the salesman

.Below is the list the farmer gave the salesman for the final price of the cow

BASIC COW	\$500.00
Two tone exterior	\$45.00
Extra stomach	\$75.00
Product storing equipment	\$60.00
Straw compartment	\$120.00
4 Spigots @ \$10 ea	\$40.00
Leather upholstery	\$125.00
Dual horns	\$45.00
Automatic fly swatter	\$38.00
fertilizer attachment	\$185.00
GRAND TOTAL	\$1,233.00

Author unknown, source unknown

Take it to Heart:

Recently three of our lady club members have had serious Health problems. The last week of September met them head on.

Louise Mansell, IGAMS, had a Pace maker and Rita Helwig of Aces Rock Shop had a Pace Maker also. Betty White of IGAMS had a heart attack and had a Coronary Stent implant. We hope and pray that these Lady's get well soon.

2003 ELECTED OFFICERS

President	Susy McMahan	5636 Greenwood St.	Lincoln, NE	68507	464-0065
1st Vice Pres.	Pat Akins, Jr.	5017 No. 6th St.	Lincoln, NE	68521	477-1322
2nd Vice Pres.	James Marburger	330 Locust	Hickman, NE	68372	792-2348
Secretary:	Vera Lyman,	420 N. 56th St.	Lincoln, NE	68504	464-6089
Treasurer:	Phyllis Parks	2345 So. 19th St.	Lincoln, NE	68502	476-6798
Board Member	David Heffelbower,	1819 Washington St.	Lincoln, NE	68502	cell 890-2794
Board Member	James Atkins	3028 So. 35th St.	Lincoln, NE	68506	483-1610

Nominating Committee

3 years	Amy Dexter-Guy
	Edward Ridge
2 years	John Harrison
	Aulden Stewart
1 year	Judy Reilly
	David Heffelbower

Chairman-Immediate Past President James N. Atkins

Long Range Planning & By-Laws Committee

3 years	Susan Taylor
	Edward Ridge
2 years	Vera M. Lyman
	Roger K. Pabian
1 year	Charles Wooldridge
	Kevin Schwartman

Standing Committees

Education / Librarian	Roger Pabian	MWF Liaison:	Vera Lyman
Field Trips:	Pat Akins, Coordinator	Scholarship:	Vera Lyman
Historian:	Susy McMahan	Christmas Party	Edward Ridge
Membership Record:	Edward Ridge	2003 Show:	John E. Harrison
Programs:	Roger Pabian	2004 Show:	Roger Pabian
Property:	Pat Akins, Jr.	2003 Swap	David Heffelbower
Youth Activities:	Kay Jurgens & Committee	2004 Swap:	Pat Akins, Jr.
Refreshments & Door Prizes	Judy Reilly		
Housing Committee:	Susy McMahan, Pat Akins, Charles Wooldridge & Vera Lyman		
Auditing Committee:	John Harrison, Roger Pabian, James Marburger		
Geology Day Coordinator :	2nd Vice President		

L. G. M. C. web address—courtesy of Jim Atkins:

<http://incolor.inetnebr.com/jna/gemclub/lgmc.htm>

Your PICK & SHOVEL Staff

Publisher:	Lincoln Gem & Mineral Club, Inc., P.O. Box 5342, Lincoln, NE 68505-0342
Editor:	Judy Reilly 421-3064
Circulation:	Phyllis N. Parks 476-6798
Business Reporter:	Vera Lyman 464-6089
News Reporters:	All Club Members

The *PICK & SHOVEL* is the official publication of the Lincoln Gem & Mineral Club, Lincoln, Nebraska. Articles and items appearing within may be reproduced in other club bulletins, provided proper credit is given to the *PICK & SHOVEL* and the author and that a reprint of the bulletin is sent to the editor of the *PICK & SHOVEL*.

The purpose of this corporation shall be to study, promote an interest in, and disseminate knowledge of lapidary and various Earth Sciences including but not necessarily limited to geology, paleontology and mineralogy. It shall be a particular purpose of the corporation to provide education in these fields to its members and the general public, especially to youth and student groups.

J. J. & L. ROCKS and MINERALS

GEMS - CABS
ROUGH - SLABS - MOUNTINGS
STERLING SILVER - GOLD FILLED - 14K GOLD
SILVER SUPPLIES - TOOLS - MACHINERY - NEW AND USED
CUSTOM SERVICES FOR SLABS, FLAT LAPPING, AND CABOCHONS

STARTING OUR 28th YEAR

330 LOCUST
HICKMAN, NE 68372-0068

PHONE
402-792-2337

"PROVIDING SUPPLIES FOR THE NOVICE TO THE DISCRIMINATING ROCKHOUND"
Please Call for Appointment

LINCOLN GEM & MINERAL CLUB

hosts our

46th Annual Show

PERSHING MUNICIPAL AUDITORIUM

March 27 - 28, 2004

"THOSE GOLDEN YEARS"

Show Chairman - Roger Pabian

Advertising by rock-hobby business or interest is permitted with the approval of the Board. The rate now set at \$15.00 per full page; \$7.50 per ½ page; \$5.00 per 1/3 page; and \$3.75 per 1/4 page(min) per issue, paid in advance. These ads will be placed through the bulletin as space permits.

Subscription to the Pick & Shovel is \$10.00 per year mailed.

Dues to Lincoln Gem & Mineral Club are as follows:

Adults (age 16 and over) \$10.00 per year Juniors (age 12 to 16) \$2.00 per year

Family Membership (Husband, wife, resident children under age 16) \$22.00 per year

New memberships must be approved by the Board, after the applicant attends at least one meeting of the club and pays the above dues plus a \$5.00 registration fee.