

# CLUB EVENTS

**March**

- 28 Setup day for the show
- 29-30 LGMC 45h Annual Show (no general meeting)

**April**

- 2 Board Meeting...Kinko's 48th& Vine 7PM
- 24 General meeting, Antelope Park 7PM

**May**

- 7 Board Meeting...place to be announced
- 22 General meeting, Antelope Park 7PM
- 24-26 President's field trip...Details to follow

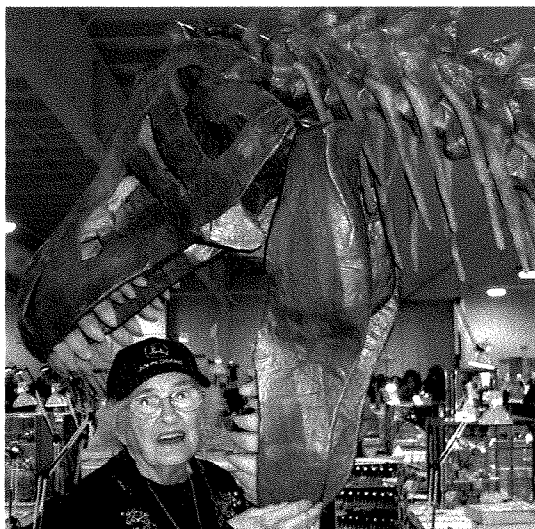
**RECAP OF FEBRUARY MEETING**

**Program:** "Lewis and Clark and the Geology of the Great Plains" by Robert F. Diffendal, Jr., of the Conservation and Survey Division at the University of Nebraska. This was a very fascinating presentation. Many thanks to Robert Diffendal and to Roger Pabian for arranging this very informative presentation.

**THERE WILL BE NO MEETING IN MARCH!  
COME TO THE 45TH ANNUAL SHOW!  
HELP OUT AND HAVE A GREAT TIME!**

**April Meeting:**

Program to be announced.  
Display material: Bring your finds from the Show  
Door Prizes: Judy needs donations! Please bring labeled donations to the meeting.  
Snacks: Vera Lyman



Phyllis Parks becomes a dino-snack at the KC Show! Story, page2. More photos in April Pick&Shovel.



## PRESIDENT'S MESSAGE

Greetings to Spring Fever Rockhounds-

I am sooo ready for cold weather to go away for a while, how about you? The weather has been nice the last few days, and rain is in the forecast. Let's hope it holds.

We have our show to look forward to the end of this month, then it should be smooth sailing after that. Beside volunteering your services to help at the show, be sure to visit all dealers and stock up on supplies, rocks, and visit all the exhibits. Be sure and contact Dan Dexter-Guy if you didn't reserve your display case yet. Contact John Harrison for a volunteer spot.

The LPS/ Pfizer Science Fair on March 4 was a bustling success, despite some nasty weather.

See you on Friday at Pershing for setup. Call my cell #310-6126 that day if you have any questions.

Susy

# IT'S SHOWTIME!!!

### Pfizer/LPS Science Fair

Once again, our club was invited to provide demonstrations for students waiting to get their science projects judged. Lincoln Public Schools held their fair at Pershing Center this year and the over 500 entrants were 5th & 6th graders. When we arrived at 4:00 to setup, I was doubtful that all the kids would make it. The weather was very bad, and some schools had dismissed students early.

By 5:00 opening ceremony, the main floor at Pershing was packed with science projects. Judges had been refreshed on criteria, and judges and volunteers had been fed well downstairs with cold cuts, veggies and soup (sure, you can demo next year club members!). There were 17 demonstrators in all, there to whet the appetite of future scientists.

Thanks to Al Stewart, Ed Ridge, Roger Pabian and Susy McMahan for showing kids the fine points of polishing, Al's ring saw, fluorescing minerals, Nebraska's native stones and fossils, properties of light dispersing through stones and on and on. Did I say kids? Oh, and parents, judges, teachers, judges, parents, teachers. brothers, sisters, aunts, uncles, grandparents-wow.

Club members Charles & Karen Messenger were also spreading knowledge around with their informative display of animals, flora, and other tidbits of our part of Nebraska with their own display.

Reported by Susy McMahan

## YOUTH NOTES

by Kay Jurgens



The Junior Rockhounds are getting geared up for their activities and displays at the show. Bring your display cases to the "Juniors Area". We had some great displays from young rockhounds last year.

As usual, we will have the "Gem and Fossil Dig" and the "Wheel Spin." We also plan to have the "Rock Race" if space permits. Juniors, the Club is depending on your excellent work to add to the success of the show. Also, it will be a lot of fun!

### 2003 Show Dealers

**Brass Rooster Minerals, Ltd.**, Rolla, Missouri  
**Brushy Creek Gems & Minerals**, Boone, Iowa  
**Costigans Minerals**, Newport, Minnesota  
**The Crystal Singers**, Lincoln, Nebraska  
**Custom Gems**, Omaha, Nebraska  
**Francina Maria Designs**, Houston, Texas  
**Jaynes**, Columbia, Missouri  
**J.J.&L. Rocks & Minerals**, Hickman, Nebraska  
**Peterson's Rocks & Gems**, Oakland, Nebraska  
**P.J. Andrist's Rocks**, Bandon, Oregon  
**Schooler's Minerals & Fossils**, Blue Springs, Missouri  
**Teton Gems**, Riggins, Idaho  
**Simon's**, Lincoln, Nebraska  
**Westside Agates**, Ames, Iowa

### 2003 Show Featured Exhibits

**ORU's Elsing Museum Display**, Roger Bush, Tulsa, OK., displaying *Jewels from the Ocean Depths, Gems, Egyptian Scarabs and Tomb Relics, Arrowheads from the Pacific NW, Navajo Turquoise Necklaces, Tri-State Mine Crystals, Hourglass Selenite* and other specimens.

**Ashfall Fossil Beds State Historical Park**, Rich Otto, Orchard, NE., displaying *Fossils and Park Information*.

**Morgan Norris**, Blackwell, OK., displaying *Carving and Carving Demonstrations*.

**Sartor Hamann, Bob Fixter**, Lincoln, NE., displaying *Cameos and Lecture on Cameos*.



## WHAT'S THE BUZZ?

by Judy Shannon Reilly



It's March! My crocuses are blooming! We've had some 80 degree weather already. Hopefully, March will continue to go out like a lamb for the 45th annual LGMC Show, March 29-30.

Phyllis Parks, Circulation Editor for the Pick & Shovel, asked me to post the following changes for the 2003 *Who's Who*: Pittards' phone #: (402) 759-4623; Brett Jurgens' zip code is 68506. Also, please "welcome back" the following club members and add their addresses to your *Who's Who*: Richard (Dick) Caster, 5740 Rokeby Road, Lincoln, NE. 68516, (402) 423-7472 and Stella and Charles Thiessen, 1519 Superior # 13, Lincoln, NE. 68521, (402) 476-5269.

Some of the Lincoln Club members made the trek south to KC last weekend for their annual show. (Photos to follow in April Pick & Shovel.) Roger Pabian and Bill White demonstrated lapidary, Betty White worked at the information desk among her other activities, the Aikins family, and J.J.&L. were dealers, and several of us were there just to enjoy!

Susy, Phyllis and I drove down to KC together (girl's night out) and we met up with David Heffelbower who was no doubt scoping out the opals. We also visited with friends from Omaha, KC and other clubs. (I think Phyllis knows everybody!). Susy & I bought some more amber jewelry and we're thinking about forming our own "Amber Power" Club. (Anyone can join after they learn the secret password.)

The weather was cold, but at least we didn't have to slide down highway 2 on the ice, like we did last year. I plan to make this an annual "trek" as the show was so much fun. Besides all the great displays and dealers and demonstrators, I met new and old friends and it really charged me up for our own show. So if you missed the KC show this year, jump aboard the caravan next year, and "come on down!" You won't regret it!

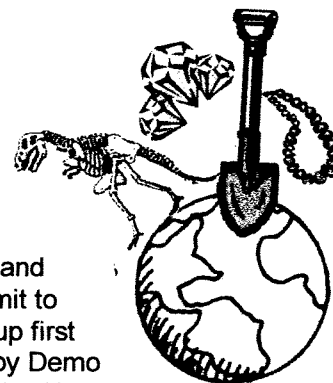
Throughout this issue, there will be several reminders of help needed for the Lincoln Show. I will add my 2 cents here. There will be so much to do Friday the 28th in preparation that the more helpers we have, the easier the work load will be. The show committee chair persons are listed on page 3. When you come to Pershing Friday morning, seek them out and see what you can do to help them. Among other things, there is always need for people to set up display cases, cover tables, and fold programs. These last minute "chores" are necessary and can be a lot of fun if we all work together! See you all Friday, March 28th!

Reminder, deadline for news for the Pick & Shovel is April 2nd! Contact me at 402-421-3064 or e-mail [jshannonreilly@aol.com](mailto:jshannonreilly@aol.com).

The Constitution only guarantees the American people the right to pursue happiness. You have to catch it yourself.

-- Benjamin Franklin

# Earth's Treasures



All **SIGNALS** are **GO** for the 2003 **SHOW!!**

Show Chairman **John Harrison** held our final Committee Meeting Feb. 25 and reported that **FLOOR PLANS** from Floor Chair **Pat Akins** are ready to submit to Pershing. The **DEALERS** selected by Dealer Chair **Roger Pabian** will set up first thing Friday, March 28. Selling and Non Selling Demonstrators contacted by Demo Chair **Roger and Mary Pittard** will share their talents with us and the public. Working Shop will be showing lapidary skills. The Youth Booth with **Kay & Brett Jurgens, Shirley Rockel & Karla Bannister** will be full of activities as always. **Kay** asks that all former and present juniors come to the booth and lend a hand.

The ticket **CHAIR Jim Atkins** (and his advisor) have their hands out for the ticket money and gate admissions.

Security Chair **Vera Lyman** has arranged for coverage 24 hours a day during the show.

Publicity & Advertising Chair **Phil and Patty Rose** have the advance magazines, the local media and surrounding area well covered with flyers, ads, radio & TV.

Lecture Programs Chair **Karen & Charles Messenger** have set up a series of speakers for both days with varied and interesting topics.

Special Features Chair **James Marburger** has several tables of material coming from **Oral Robert's University Elsing Museum** of Tulsa, Oklahoma. **Morgan Norris** of Blackwell, Oklahoma will return with his **Gemstone Carvings** that were so popular in 2002. **Rick Otto** of Orchard, Nebraska will be here with materials & information about **Ashfall Fossil Beds State Historical Park**. Robert Fixter of **Sartor Hamann Jewelers** will have a special case of **Cameo's**. An added feature will be an excellent case of "**Hearts Craft**" displayed by **Frank and Mary Lee**. (Hearts made of stone.)

Ribbons & Recognitions Chair **Marilyn & Aulden Stewart** will have our identity ribbons for us as needed and certificates of participation to be delivered.

Club Membership Booth will be set up by **Susy McMahan** with Information, Answers and, hopefully, some club memorabilia to share.

Exhibit spaces will be marked for all who have made their space needs known. See Exhibits Chair **Amy and Daniel Dexter-Guy** and if you have not told them your needs please do so before March 28.

Breakfast Chair **Shirley & Bill Rockel** made arrangements for our Sunday Morning Dealer Breakfast at Old Country Buffet, 2241 O St.. The doors will be open at 7:45 and all club members, committee and family are urged to attend this fun gathering. Mention our club name and you will be given the Senior Discount price.

Pete Crawford is once again going to head up the 'Hauling Group' on Friday morning, March 28, at the storage facility on 19<sup>th</sup> & Knox Streets. He'd like as many hauling vehicles and ready hands to be at Security Storage by 8:30 AM ready to work.

**Coffee and** — will be prepared at the Auditorium for hard workers.

Club Members—Please remember to get your **Worker Pass** from Phyllis if you do not have a display and/or are not on the Show Committee. Remember— **SHOW, WORK or PAY**.

Submitted by Phyllis Parks, 2003 Show Secretary



## ROCKY RAMBLINGS BY EVEY

### MY BIG BROTHER, THE WHEELER DEALER

Leland, my "big" brother was only older than me as he was much shorter than I was. He and his wife loved to go to the rock shows with us in Texas and help out. We were in Harlingen, Texas, and as we were setting up, I told Leland I would give him one table on the end that he could sell from. I had lots of items that I had accumulated after buying out four gem and mineral shops and fourteen gem and mineral collections. So with odds and ends such as old books, slabs, supplies, used

tumblers – you name it – I had it.

Well, Leland loved this job. He knew zip about rocks, but just enough that if some guy would show any interest in buying, he would try and sell him a "lot" price, or if-you-take- it-all price. Leland was very good at this. His favorite line went something like this, "See, I'm just working for this guy and he said if I did not sell it all at this show, he would fire me!"

Of course, I did not ever intend to fire my own brother. I would have just not bought his dinner and supper. Yes, I miss my big brother, as he passed away five or so years ago. We had a lot off fun with him and his wife. So, Leland, if you're watching and reading this, I promise I'll only write one more article on you and the fun we had.

Rockspectfully,

Evey

#### A Few Words For Thought

Are you an active member,  
The kind that would be missed?  
Or are you just content,  
That your name is on the list?

Do you attend the meetings  
And mingle with the crowd?  
Or would you rather stay at home  
And complain both long and loud?

Do you give a little time  
And help to make things tick?  
Or leave the work to just a few,  
And talk about the clique.

So come to all the meetings  
And help with hand and heart  
Don't be just another member  
But take an active part.

Think it over people,  
Are you right or wrong?  
Are you an active member,  
Or do you just belong?

Author Unknown, Source: Quarry Quips, March 2003, via Glacial

Drifter, January, 2003

#### Some "Make Do" Lapidary Tips

**What do you do when you find a stash of stones that can be tumbled, and you don't have any filler on hand? Some tips gleaned from the Lapidary List group on Yahoo:**

- crumbled up Styrofoam coffee cups
- woodchips (hamster bedding)
- peanut shells
- sawdust
- plastic packing 'peanuts' (not the biodegradable ones that melt in water)
- coffee grounds (somewhat messy)
- shredded newspaper as "filler"
- toilet paper, shredded up (It works)!

**How about a last minute dopping container?**

Sucrets or Altoids tin and an electric stove as a dop pot? The opened lid makes a great place to warm the stones, and the place where the Sucrets used to be holds the dop wax.

(Thanks to Kreigh Tomaszewski, [www.Tomaszewski.net](http://www.Tomaszewski.net) and Jeannette Wilson, [mwillow@oz.net](mailto:mwillow@oz.net), both members of the Lapidary List, yahoo groups, for passing along their innovative tips.)

Submitted by Susy McMahan

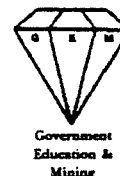
# FEDERATION NEWS

MWF NEWSLETTER

MARCH 2003



## ORDER FORM GEM EDUCATIONAL MATERIALS



Distributed by:  
**The SME Foundation for Public Information & Education, Inc.**  
 8307 Shaffer Pkwy., Littleton Colorado 80127  
 (303) 973-9550 or Fax: (303) 973-3845

These materials made available by the Society for Mining, Metallurgy and Exploration, Inc. (SME) through its Government, Education and Mining (GEM) Program, support its members in educating the general public about the importance of minerals to society.

<b>FREE MATERIALS</b>	
Due to the high cost of printing, requests are limited to one copy; all materials may be copied for use and distribution.	
DESCRIPTION	✓
<b>GEM MISSION STATEMENT</b>	
<b>TEACHER TRAINING PACKETS</b> (1. Elementary; 2. High School) Developed by the Nevada Mining Assn., these packets contain <i>classroom projects, games and other learning exercises</i> dealing with minerals and mining. The material may be photocopied.	1. <input type="checkbox"/> 2. <input type="checkbox"/>
<b>VIDEO LIBRARY LIST</b> This service is available to SME members. Non-members can use the service through an SME member. Please call or write SME Headquarters for an SME contact person in your local area.	
<b>"YOUR HOUSE COMES OUT OF A MINE" FLYER</b> A simple, but effective 1-page summary about the minerals necessary to construct a home. Covers everything from wiring to the paper your mortgage is printed on.	
<b>"WANTED: 5 BILLION TONS OF MINERALS" FLYER</b> Provided by the US Bureau of Mines, one-page summary lists the 5 billion tons of minerals consumed annually by the U.S. population and the products derived from those minerals.	
<b>"WHAT ARE MINERALS?" BROCHURE</b> A 4-page brochure produced in association with the U.S. Geological Survey. Where do minerals come from? What is underground and open pit mining? Why is processing important? How are minerals used?	
<b>"THE MINING INDUSTRY &amp; MINERALS"</b> Instructional material produced by the National Energy Foundation.	
<b>PUBLIC INFORMATION &amp; EDUCATIONAL RESOURCES</b> A list of other sources to contact for information about mining.	
<b>ARTICLE REPRINTS: ENVIRONMENTAL ISSUES</b> A collection of articles on topics such as GLOBAL WARMING, ACID RAIN, and OZONE DEPLETION.	
<b>BACK-COPIES OF GEM FACTS (last 12 issues)</b> The <i>GEM Facts</i> column is a regular feature in SME's monthly journal, <i>Mining Engineering</i> . It highlights the accomplishments of SME members involved in educating society about the importance of minerals and mining. The column also discusses public issues related to the minerals industry. It is an excellent reference for locating educational resources.	
<b>GEM PROGRAM MANUAL</b> The GEM Manual contains a wealth of information and suggestions for GEM activities and how SME members can organize and develop a successful SME GEM committee in their local area.	
<b>"MAJOR MINER PHOTO CONTEST" BROCHURE</b> SME's GEM Committee sponsors this annual event and awards cash prizes in 2 categories (B&W and Color) and 3 divisions (Professional, Amateur and Junior (under 19 yrs. of age). Photos must relate to minerals or mining. <i>Entries must be received at the address above by November 1.</i>	

## AFMS CODE OF ETHICS

I will respect both private and public property and will do no collecting on privately owned land without the owner's permission.

I will keep informed on all laws, regulations and rules governing collecting on public lands and will observe them.

I will, to the best of my ability, ascertain the boundary lines of property on which I plan to collect.

I will use no firearms or blasting material in collecting areas.

I will cause no willful damage to property of any kind- fences, signs, buildings.

I will leave all gates as found.

I will build fires in designated or safe places only and will be certain they are completely extinguished before leaving the area.

I will discard no burning material- matches, cigarettes, etc.

I will fill all excavation holes which may be dangerous to livestock.

I will not contaminate wells, creeks or other water supply.

I will cause no willful damage to collecting material and will take home only what I can reasonably use.

I will practice conservation and undertake to utilize fully and well the materials I have collected and will recycle my surplus for the pleasure and benefit of others.

I will support the rockhound project H.E.L.P. (Help Eliminate Litter Please) and will leave all collecting areas devoid of litter, regardless of how found.

I will cooperate with field trip leaders and those in designated authority in all collecting areas.

I will report to my club or Federation officers, Bureau of Land Management or other authorities, any deposit of petrified wood or other materials on public lands which should be protected for the enjoyment of future generations for public educational and scientific purposes.

I will appreciate and protect our heritage of natural resources.

I will observe the "Golden Rule," will use "Good Outdoor Manners" and will at all times conduct myself in a manner which will add to the stature and public "image" of rockhounds everywhere.

## Upcoming Events, 2003

**March 29th and 30th:** Lincoln Gem and Mineral Club show at Pershing Auditorium (Sat. 9-6, Sun. 10-5).

**April 5th and 6th:** Norfolk Club Show, Saturday & Sunday at the Norfolk Sunset Mall.

**April 25th-27th:** Wichita Gem & Mineral Society annual Show- See clubsite- [www.geocities.com/wgms2001](http://www.geocities.com/wgms2001)

**May 17th:** NAOESCI field trip, Saturday. All member clubs are invited to meet at 1 PM at Concordia University in Seward, NE for a tour of a super lapidary, gem, mineral and fossil museum. Possible visit to a Greenhorn Limestone formation later to hunt for fossils.

**June 5th-8th:** Combined California, American Federation Show, Ventura, California.

**Aug. 15th-17th:** Midwest Faceters Guild 14th Annual Faceters Seminar at Mott Community College, Flint Michigan-For information, call or write Harold "Arizona" Rice, 122 Lois Lane, Mt. Clemens, MI 48043. (586) 463-5972.

**August 15th-17th:** Midwest Federation Show, Cottage Grove, Minnesota

**Aug. 30th-Sept 1st:** Northwest NE. Rock Swap (Friday through Monday) at Crawford City Park, Crawford, NE (field trips, over 40 dealers)

**Sept. 27th and 28th:** Loup Valley Gem and Mineral Club show at St. Mary's Social Center, Schuyler, NE.

**Oct.4th and 5th:** Nebraska Mineral and Gem Club, Omaha, NE. Annual Show.

## ROCK EUTHANASIA

by Janet Whitaker, Canton, Ohio, 1993

Rocks, those innocent little fellows you see by the roadside, have a dark side to them. Once you stop your car, they call to you, your ears refuse to hear, but your heart hears those plaintive calls echoing in your heart and head. "Take me home. Take me home." You walk on, bravely stepping over them, then you hear it again, "Pick me up," You automatically follow orders, and before you know it you are home again. When you open your trunk to get out the couple of rocks you picked up, you are amazed to see they have multiplied into a trunk full of happy giggling rocks.



*Maybe you should put the big one back . . .*

As your wife walks by, she says you are banging them together, but you know it's the rocks giggling.

Sure enough, some of them have slipped into your house, now it seems every time you look there are more rocks, outside, inside, under the sofa, in the garage, in the kitchen, in the bathroom. You know you couldn't have put them there. They must sneak around at night, while you are asleep.

Finally, they have taken over the entire house, one of you has to go. Will it be you, or the rocks? No question, you are staying. So what to do.

It is time for "ROCK EUTHANASIA." Now that the decision has been made. How do you proceed? What are your options?

**Sell them:** Can we sell them? They aren't slaves; but we have become their slaves.

**Give them away:** Trying to give them to your friends is a serious problem. You will run out of friends long before you run out of rocks. Remember they don't stop multiplying, just because you want them to.

**Youth Groups:** Youth groups always want rocks; but I worry about my rocks. Will they be loved, and get tender loving care that I have given them? Some youths, want to make Astronauts, out of them, sailing them through the air. My rocks have not had sufficient training for that, and have disastrous crash landings.

**Abandon them:** You could just go away and let them lay there. If you do that they could become delinquents. When that happens they tend to break windows, and generally get in trouble. Can be arrested for creating delinquent rocks.

**Make a rock garden:** You can try planting them in a rock garden, but in all the times I have tried it, no matter how diligently I water and fertilize them, they just will not grow, or blossom. I don't know why they call it a rock garden. They multiply faster in the garage.

**Landscaping:** You might line the borders of your driveway with them. That sounds like a good idea, but the rocks must not like it. When your car's tires get too close the rocks bite them and let out all the air. Then you have to worry about how to deal with angry tires too.

**Construction:** I tried incorporating my rocks into a bench. I thought that was a good idea, but the birds didn't like it, I guess. They regularly sat on the bench, and did unmentionable things on my friends.

I guess the only solution is to get a bigger house and more storage. If the trend continues, I will not need to have a cemetery lot, just bury me under my rocks.

From Cedar Valley Gems 9/01, via The Rockfinder 1/94

## HUMOR

A man called a hotel and asked, "How much do you charge for a room?"

"Our rates start at \$45 a day," was the answer.

"Do you take children?"

"No, sir, just cash or credit cards."

From the Slab & Gab, 05&06/2002, via Gulf Port Gems, 12/86

I think that I shall never be  
As slender as a young birch tree.  
My love for candy, cake and coke  
Has changed me to a sturdy oak!

from Slab & Gab 05&06/2002, via Rockytier, 2/85  
Hound's Tale Eds' comment: Amen!

THE HOUND'S TALE JUNE 2002

# Earth's Treasures

Displays  
 Fossils  
 Working Exhibits  
 Gem Dig  
 Door Prizes



Dealers  
 Programs  
 Minerals  
 Family Activities  
 Jewelry

## Lincoln Gem & Mineral Club 45th Annual Show

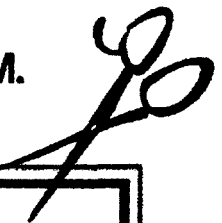
March 29-30, 2003

Pershing Auditorium

Between M Street and N Street on 15th,  
 Lincoln, NE


Admission: Adults- \$4.00, Children Under 12-Free with Adult  
 Two-Day Pass - \$6.00

Hours: Saturday, March 29, 9:00 A.M. to 6:00 P.M.  
 Sunday, March 30, 10:00 A.M. to 5:00 P.M.



\$ 1 OFF

45th Annual Show



BRING THIS COUPON  
 OR NEWSPAPER AD.

ALL ADULT ADMISSIONS TO THE SHOW!



## 2003 ELECTED OFFICERS

President	Susy McMahan	5636 Greenwood St.	Lincoln, NE	68507	464-0065
1 <sup>st</sup> Vice Pres.	Pat Akins, Jr.	5017 No. 6 <sup>th</sup> St.	Lincoln, NE	68521	477-1322
2 <sup>nd</sup> Vice Pres.	James Marburger	330 Locust	Hickman, NE	68372	792-2348
Secretary:	Vera Lyman,	420 N. 56th St.	Lincoln, NE	68504	464-6089
Treasurer:	Phyllis Parks	2345 So. 19th St.	Lincoln, NE	68502	476-6798
Board Member	David Heffelbower,	1819 Washington St.	Lincoln, NE	68502	cell 890-2794
Board Member	James Atkins	3028 So. 35th St.	Lincoln, NE	68506	483-1610

### Nominating Committee

3 years	Amy Dexter-Guy Edward Ridge
2 years	John Harrison Aulden Stewart
1 year	Judy Reilly David Heffelbower

Chairman-Immediate Past President James N. Atkins

### Long Range Planning & By-Laws Committee

3 years	Susan Taylor Edward Ridge
2 years	Vera M. Lyman Roger K. Pabian
1 year	Charles Woodridge Kevin Schwartman

### Standing Committees

Education / Librarian	Roger Pabian	MWF Liaison:	Vera Lyman
Field Trips:	Pat Akins, Coordinator	Scholarship:	Vera Lyman
Historian:	Susy McMahan	Christmas Party	Edward Ridge
Membership Record:	Edward Ridge	2003 Show:	John E. Harrison
Programs:	Roger Pabian	2004 Show:	Roger Pabian
Property:	Brett Jurgens	2003 Swap	David Heffelbower
Youth Activities:	Kay Jurgens & Committee	2004 Swap:	?
Refreshments & Door Prizes	Judy Reilly		
Housing Committee:	Susy McMahan, Pat Akins & Vera Lyman		
Auditing Committee:	John Harrison, Roger Pabian, James Marburger		
Geology Day Coordinator :	2nd Vice President		

L. G. M. C. web address—courtesy of Jim Atkins:

<http://incolor.inetnebr.com/jna/gemclub/lgmc.htm>

### Your PICK & SHOVEL Staff

Publisher:	Lincoln Gem & Mineral Club, Inc., P.O. Box 5342, Lincoln, NE 68505-0342
Editor:	Judy Reilly 421-3064
Circulation:	Phyllis N. Parks 476-6798
Business Reporter:	Vera Lyman 464-6089
News Reporters:	All Club Members

The *PICK & SHOVEL* is the official publication of the Lincoln Gem & Mineral Club, Lincoln, Nebraska. Articles and items appearing within may be reproduced in other club bulletins, provided proper credit is given to the *PICK & SHOVEL* and the author and that a reprint of the bulletin is sent to the editor of the *PICK & SHOVEL*.

The purpose of this corporation shall be to study, promote an interest in, and disseminate knowledge of lapidary and various Earth Sciences including but not necessarily limited to geology, paleontology and mineralogy. It shall be a particular purpose of the corporation to provide education in these fields to its members and the general public—especially to youth and student groups.

## J. J. & L. ROCKS and MINERALS

GEMS - CABS  
ROUGH - SLABS - MOUNTINGS  
STERLING SILVER - GOLD FILLED - 14K GOLD  
SILVER SUPPLIES - TOOLS - MACHINERY - NEW AND USED  
CUSTOM SERVICES FOR SLABS, FLAT LAPPING, AND CABOCHONS

STARTING OUR 28th YEAR

330 LOCUST  
HICKMAN, NE 68372-0068

PHONE  
402-792-2337

"PROVIDING SUPPLIES FOR THE NOVICE TO THE DISCRIMINATING ROCKHOUND"  
Please Call for Appointment

## LINCOLN GEM & MINERAL CLUB

hosts our

45<sup>th</sup> Annual Show

PERSHING MUNICIPAL AUDITORIUM

March 29 - 30, 2003

'EARTH'S TREASURES'

Show Chairman - John Harrison

Advertising by rock-hobby business or interest is permitted with the approval of the Board. The rate now set at \$15.00 per full page; \$7.50 per ½ page; \$5.00 per 1/3 page; and \$3.75 per 1/4 page(min) per issue, paid in advance. These ads will be placed through the bulletin as space permits.

Subscription to the Pick & Shovel is \$10.00 per year mailed.

Dues to Lincoln Gem & Mineral Club are as follows:

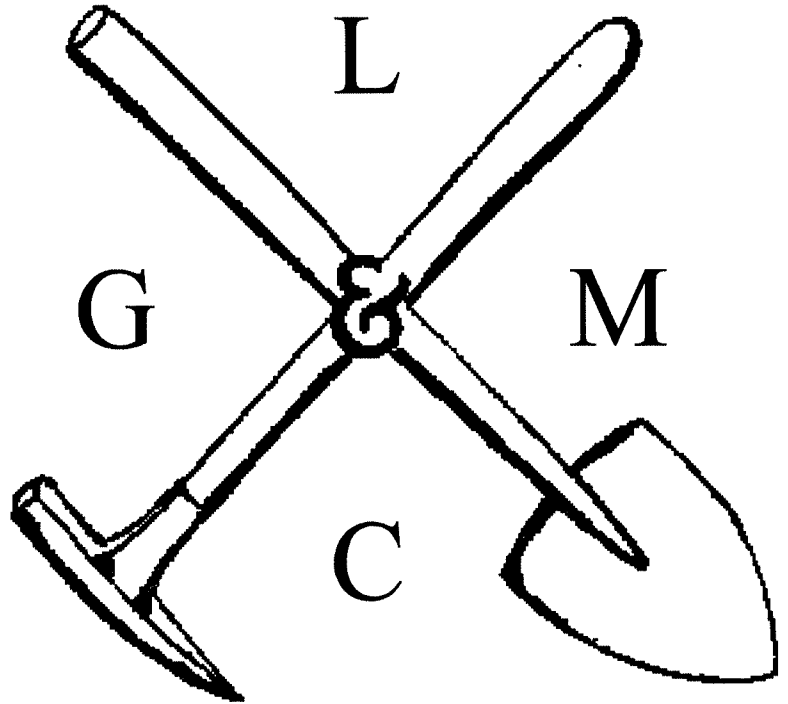
Adults (age 16 and over) \$10.00 per year Juniors (age 12 to 16) \$2.00 per year

Family Membership (Husband, wife, resident children under age 16) \$22.00 per year

New memberships must be approved by the Board, after the applicant attends at least one meeting of the club and pays the above dues plus a \$5.00 registration fee.

# THE PICK & SHOVEL

March 2003



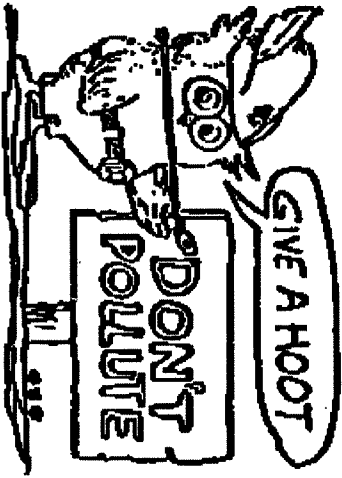
OFFICIAL PUBLICATION OF

LINCOLN GEM & MINERAL CLUB

LINCOLN NEBRASKA

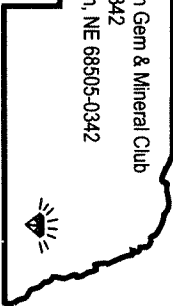


Associated with:



Mail Exchange Bulletins To:

Lincoln Gem & Mineral Club  
Box 5342  
Lincoln, NE 68505-0342



H. E. L. P.

Help Eliminate Litter Please