

## CLUB EVENTS

<sup>13</sup>  
Nov. 16 2003 Show Committee Meeting, 7PM,  
Gere Library, 56th&Normal

21 General Meeting, Kellogg Center, 33rd &  
Holdredge-Juniors 7-7:30 Adults 7:30-10 (Center is  
closing so this is our last meeting here)

Dec. 4 Board Meeting, 7PM Kinko's 48th&Vine

8 Christmas Party/ Meeting, Antelope  
Park Shelter, 5-9 PM

### NOVEMBER 21 MEETING

**SILENT AUCTION:**....Bring hobby related items  
items for a silent auction to raise money for  
equipment for the club.

**Elections:**LGMC will elect officers for 2003. It's  
your club...come cast your vote!

**Program:**Crystal Basics by Roger Pabian

**Display Material:** Crystals

HAPPY THANKSGIVING!



### DECEMBER 8 MEETING/ PARTY

Mark your calendars for the LGMC Christmas  
Party! This year the club will furnish ham and  
turkey and coffee. Members should bring a hot dish  
& salad or dessert Anyone who wants to participate  
in the gift exchange should bring a hobby related  
wrapped gift, max value \$5.00.

### RECAP OF OCT. MEETING by Judy Reilly

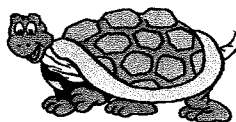
It's hard to believe, but once again, I was the only  
one in costume for the Halloween meeting. This year  
I was "Snowflake Obsidian." Therefore I won the  
grand prize- a four day cruise to the Caribbean.  
Maybe there will be more costumes next year (just  
kidding.)

Roger gave another OUTSTANDING presentation  
about how to detect fake gemstones. He brought a  
dichroscope and a polariscope and demonstrated how  
to determine if your specimen is the real thing. He  
also had lots of gemstones for the club to examine.

There were many great desserts to enjoy...thanks to  
all who contributed.

The plentiful door prizes were donated by Ed Ridge,  
Roger Pabian and Judy Reilly.

It was a great meeting...See you all Nov 21.



## PRESIDENT'S MESSAGE

Greetings fellow Rockhounds,

A reminder that Morrill Hall Museum, on the University Campus, plans a series of Saturday Science adventures. They have invited the Lincoln Gem and Mineral Club to demonstrate and participate in a Rock and Fossil Special Event on November 16. Although the geology students will be available to help, so can anyone in the club, including kids. LPS is sending home flyers with all students advertising this event, so they are targeting families. Roger and some of his lapidary students will be demonstrating lapidary, and Judy Reilly and I will have some kids activities set up. Our display is entitled "Kidz School of Hard Rocks." Needed: egg cartons, polished stones, large or small chips. Contact Judy or me by Nov 15 if you can donate any of these items

See you at the November meeting! Remember the SILENT AUCTION! Clean out your cabinets and garages and bring rocks, minerals, gems...anything hobby related to be auctioned off for the club.

See you at the meeting!

Susy

### 2003 Show Update

At the Oct. meeting, 2003 Show Chairman, John Harrison received approval for the proposed Show Budget and announced the following Show Committee Chairs:

- Dealers- Roger Pabian
- Special Features- Jim Marburger
- Floor- Pat Akins, Jr.
- Club Booth-Susy McMahan
- Ribbons & Recognition- Aulden & Marilyn Stewart
- Displays- Judy Reilly
- Juniors-Kay Jurgens
- Publicity- Phillip & Patricia Rose
- Demonstrators- Roger & Mary Pittard
- Tickets- Jim Atkins
- Security- Vera Lyman
- Programs to Handout-
- Breakfast-

Since then, John has confirmed Lecture Programs- Karen Messenger.

The first Show Committee meeting will be Wednesday, Nov. 13, 7PM at Gere Library, 56th & Normal.

If you want to help at this yearly "BIG" Event, be sure to contact John Harrison, Show Chairman.

Submitted by Phyllis Parks, Show Secretary

# Faces from the Ice Age

By Dr David Whitehouse  
BBC News Online 28 May, 2002

What could be the oldest lifelike drawings of human faces have been uncovered in a cave in southern France. The male and female faces were discovered carved on the limestone floor of a cave at La Marche in the Lussac-les-Chateaux area of France along with lions, bears, antelope, horses - and 155 lifelike human figures. Over 1,500 slabs were found with images of "real people" - male and female faces, people in robes, hats and boots - and may date back 15,000 years.

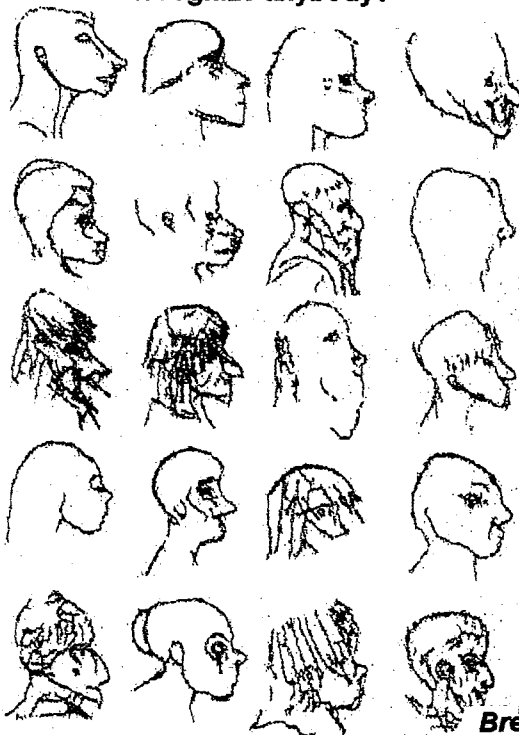
This was long before the rise of the great civilizations and a time when Europe was firmly in the grip of an Ice Age.

### Stars in the ground

Dr. Rappenglueck, of Munich University, speculates that many archaeological wonders could have been covered up.

Drawings of the Pleiades have also been found by Dr. Rappenglueck on the walls of many Neolithic caves in several parts of Europe, but until now no cosmic marks had been found on cave floors. He speculates that the small holes could have been filled with animal fat and set alight mimicking the flickering stars in the sky. "Perhaps this is the origin of the candlelit festivals of the Far East where lighted candles are held in the shape of the Pleiades. Perhaps it is a tradition that stretches back tens of thousands of years into our Stone Age past."

### Recognize anybody?



Breccia  
June 2002

Blessed are we who can laugh at ourselves for we shall never cease to be amused..... Annonymous



## WHAT'S THE BUZZ?

by Judy Reilly

I just want to encourage everyone to submit stories, articles, etc. that might be of interest to club members. This is YOUR newsletter! Be involved in its content! I'd love to print stories from the junior members too. The ones I have received in the past were wonderful! Keep them coming! Remember, all copy is due by the first Wednesday of each month. I can be reached at 402-421-3064 or jshannonreilly@aol.com. Thanks.....Judy

\*\*\*\*\*

A big welcome goes out to new members Arvid and Sheryl Olson!

\*\*\*\*\*

Prayers continue for Billie Heffelbower and Grant Bennett and their families as they battle their illnesses.



### Memmorium

Rosa Lee Wright Ulrich

Former member and widow of long time member, Ralph Ulrich, passed away recently. Rosa Lee and her daughter, Sandra, came into the Lincoln Gem and Mineral Club in the early 1970's and both were active members, Sandra being an important part of the junior program. Rosa Lee married fellow member, Ralph Ulrich, and shortly thereafter, they moved to Arizona. The Ulrichs returned to Lincoln after Ralph's retirement and both again took an active part in Lincoln Gem and Mineral Club. Rosa Lee had been in failing health and had not taken part in the club since Ralph's passing. Both were very dedicated to the club in their years of membership and they will be missed by both family and friends. Roger K. Pabian

### Nominating Committee Report

The following club members have ben nominated for officers for 2003:

- President: Susy McMahan
- 1st Vice President: Pat Akins, Jr
- 2nd Vice President: James Marburger
- Secretary: Vera Lyman
- Treasurer: Phyllis Parks
- Board Member: James Atkins
- Board Member: David Heffelbower



Additional nominations will be accepted from club members and elections will be held at the November 21 meeting.

LINCOLN GEM & MINERAL CLUB, INC. - BOARD OF DIRECTORS - Oct. 2, 2002  
7:00 P.M. at Akins Rock Shop 218 "A" St.

Supper & "sawing rocks" from 5 - 7 P.M.

The Meeting called to order by Pres. McMahan. THANKS to the Akins Family for the supper and hospitality.

Motion to approve the Minutes of the Sept. Meeting by Pat Akins; 2nd by Jim Marburger. Carried.

Motion to approve Treasurer's report by Jim Marburger; 2nd by Pat Akins. Carried.

All Bills were approved and paid.

Editor of Pick & Shovel requested an increase in budget for printing and mailing. Motion by Phyllis Parks, 2nd by Jim Marburger to allow a \$ 500. increase in budget. Motion carried.

Pat Akins went on field trip to Crawford over Labor Day Weekend, and indicated it was a lot of fun. He would like to see a group plan for Memorial Weekend. Keep it in mind and perhaps plans can be made in Spring.

#### NEW BUSINESS:

Brett Jurgens had visited the Edgerton Center in Aurora, NE. It was very interesting and exciting, but they are in need of some materials lights, etc. Motion was made by Phyllis Parks and 2nd by Jim Marburger that Brett find out the prices of lights and materials needed. Motion carried.

SWAP: NCCE will be closing on Dec. 20, 2002. This means we will have to find a new Location to hold our Annual Swap in Jan. The Secretary called a number of locations to fine out prices of rooms, coffee, etc. A number of them quite expensive or poor access to building due to parking or stairs.

Motion made by Jim Marburger, 2nd by Phyllis Parks, for recommendation to rank & file that we seek permit to have SWAP at Antelope Shelter. Motion carried.

Our next General Meeting will be on October 24, 7:00 P.M. at Antelope Shelter.

Our November Meeting will be at NCCE on November 21 - Election Meeting. (and our last at NCCE)

Our November Board Meeting will be held on OCT 30 @ 7:00 P.M. at Kinkos. (held a week early so Editor has time to publish P & S before General Meeting.)

Meeting adjourned.

Long Range Planning Committee to meet soon and discuss possibility of own Club House.

Respectfully submitted,

*Vera Lyman*  
Vera Lyman, Secretary

LGMC Treasurer's Report for October, 2002

Pinnacle Checking Balance on Sep. 30, 2002 \$ 2,816.48

October Receipts:

None

October Payments:

JJ&L Rocks & Minerals(Lap. Class)	52.75	
Judy Reilly-Print Sep. P & S	75.26	
-Postage Oct. P & S	46.25	
-Print Oct. P & S	72.63	246.89
Pinnacle Checking Balance on Oct. 31, 2002		\$ 2,569.59

LINCOLN GEM & MINERAL CLUB, INC. - GENERAL MEETING Oct. 24, 2002  
7:30 P.M. at Antelope Park Shelter House

Halloween Meeting with desserts!

Meeting called to order by 2nd Vice President, Pat Akins; in the absence of President, due to illness.

There were 18 members, 1 Junior and 2 guests in attendance.

Due to lack of quorum at Sept. Meeting, no business could be conducted.

The Minutes and Treasurer's report of the May Meeting were approved with motion by Jim Marburger, 2nd by John Harrison. Carried.

The Minutes and Treasurer's report of the Sept Meeting were approved with motion by Roger Pittard, 2nd by Shirley Rockel. Carried.

SHOW BUDGET: (for 2003) Presented by Show Chair, John Harrison. Motion for approval by Roger Pabian, 2nd by Jim Atkins. Carried.

NOMINATING COMMITTEE: Report presented by Chair Jim Atkins.

President - Susan McMahan	John Harrison nominated
1st Vice - Pat Akins	Jim Marburger to move to
2nd Vice -	2nd Vice. (accepted)
Secretary - Vera Lyman	
Treasurer - Phyllis Parks	Jim Atkins volunteered to
Directors - Dave Heffelbower	serve as Director
- Jim Marburger	

Dan & Amy Dexter-Guy have volunteered to serve on Nominating Comm. for 3 yrs. Aulden Stewart & John Harrison will move to 2 yrs. Ed Ridge will serve 1 yr (for Billie Heffelbower) with Judy Reilly.

"2003" SHOW: Chairman, John Harrison Theme: "Earth's Treasures"  
Committee Chairs: Dealers - Roger Pabian Floor - Pat Akins  
Special Features - Jim Marburger Displays - Judy Reilly  
Ribbons/Recognition - Aulden & Marilyn Stewart  
Publicity - Phil & Pat Rose Juniors - Kay Jurgens  
Club Booth - Susan McMahan Ticket Sales - Jim Atkins  
Demonstrators - Roger & Mary Pittard Security - Vera Lyman  
Programs - Breakfast -  
Dealer Chair indicated that all 14 Dealers are contracted.

"2003" SWAP: Rank & file approved Swap be held at Antelope Shelter as recommended by Board. Board to discuss possibility of Supper at Swap site.

MEETINGS: Board of Directors - Wed. Oct 30 @ 7:00 P.M. @ Kinkos.  
Show Committee Meeting - Wed. Nov. 13 @ 7:00 P.M. @ Gere Library  
General Meeting - Thur. Nov 21 @ 7:00 P.M. @ NCCE (ELECTION)

MWF SHOW: Board approved motion to host MWF Show and make presentation to rank & file. John Harrison made presentation of ideas and outline of Show needs. Motion was made by Roger Pabian to pursue hosting MWF Show in 2005 or earliest date. 2nd by Sharon Marburger. Motion carried. John Harrison appointed to seek information necessary for LGMC to make application for same.

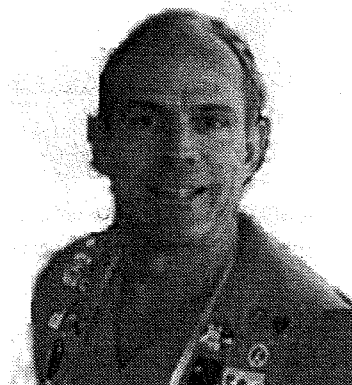
Meeting adjourned. Everyone enjoyed dessert, coffee & cider; and enjoyed an excellent program presented by Roger on ways to detect real gemstones from fake or synthetics. THANKS Roger!

Respectfully submitted,

*Vera Lyman*  
Vera Lyman, Secretary

**FEDERATION NEWS**

*from Ron Carman, AFMS President*



This is my first message as your AFMS president, and I'm looking forward to the year with some real enthusiasm, since Steve and his administration seem to have things doing quite well. Hopefully this coming year we can keep advancing the federation's purposes. Thanks to Steve for a job well done, and to all the other members who work so hard to help keep us going. I know I'll need all the help I can get, and I am thankful for lots of capable assistants and their capable assistance (pun intentional).

Our two new committees for uniformity in judges' training and for obtaining collecting sites seem to be getting an enthusiastic start. They address two of our main concerns: that of being able to continue field collecting and more consistency in judging exhibits. I know that I have heard several concerns from members over the past few years about these issues, particularly the loss of more and more collecting sites. Personally, I am an enthusiastic field collector, and over the past years I have seen several of the sites I used to visit being swallowed up by development or other non-geologic uses. It is disappointing when a good mineral or fossil collecting site is cemented over and covered by houses or parking lots.

Some clubs have had the good sense to make their own claims on their favorite collecting sites, and there is no reason why we as a federation couldn't follow their good examples. If we abide by all pertinent government regulations and by our own AFMS rules, we could potentially obtain and keep some of our favorite sites from being lost. People are always asking "What does the federation do for us?" Here is another advantage to federating: by being members of federated clubs we can preserve some of our favorite collecting areas and share them with brother and sister federated clubs. We need to do all in our power to preserve this most important aspect of our hobby.

Look for me and come tell me hello at a field trip or a show sometime. I will be glad to listen to any ideas or suggestions our members may have.

From AFMS Newsletter, Nov., 2002

\*\*\*\*\*

A reporter, interviewing an old Rockhound who had reached his 99th birthday said, "I certainly hope that I can come back next year and see you reach 100".

"I don't see why not, young man," the old man said. "You look healthy enough to me"!

From MWF Newsletter, Nov., 2002

**Places To Go, Things To See...**

**2003 REGIONAL FEDERATION SHOWS**

**Combined California/AFMS June 5-8**  
Ventura, CA

**Eastern Federation**  
To Be Announced

**Midwest Aug 15-17**  
Cottage Grove, MN

**Northwest/ Aug 1-3**  
Kennewick, WA

**Rocky Mountain/ July 11-13**  
Casper, WY

**South Central/ Feb. 22-23**  
Pasadena, TX

**Southeast**  
To Be Announced

**Nov.16, "Treasures of the Museum Exhibit", UNL,Morrill Hall,Lincoln, NE. A special Rock & Fossil Event for the whole family.**

**Nov. 18, Argentinean Dinosaurs with Dr. Phil Currie, Cedar Rapids, IA. Washington High School Theater, 7PM. Admission Free.**



## ROCKY RAMBLINGS BY EVEY

### THE RATTLESNAKE EGGS

For years while traveling and selling at rock shows, I bought and sold many different gemstones, minerals and rocks. While visiting my friends in Blackwell, Oklahoma, my host told me to come out to his shop, since he wanted to show me something he had found. He had made up a few flats to see if they would sell. He called these items "Petrified Rattlesnake Eggs".

I bought a few flats and sure enough, they did sell. The eggs were from western, OK. and they were of gypsum and alabaster. When found, they would always be in a clump or nest. They were

white and gray and did look like a snakeskin.

I bought many of these eggs through the years and sold them at a lot of rock shows. But one time Lois and I were in Topeka, K.S. at a show and I had the eggs out in a little egg crate. Along came a real big guy and a little mousy guy. They both stopped and looked at the eggs. The big guy said to the little guy, "Boy I remember these from when i was a little kid. We used t find them and break them open and there was a little tiny snake in the egg"!

I decided to leave so I said to Lois, "I'll be back in a minute". I left but stayed back and watched as Lois told the man that these were not real snake eggs. After she him, he kind of blew up and left.

Then it happened. The sow chairman came over and asked, "Hey Evey, what are these things"? I told him that they were alabaster and gypsum. He then asked, "Is there a snake in the eggs"? I told him, "No, rattlesnakes are born alive, not from an egg". He looked at me and said, "Sorry, Evey. You have to take them off your table. That's false advertising"!

I told him I would do it if he read me the sign over the table of an Oregon dealer. The very large sign read: "Genuine Oregon Thunder Eggs"! Then I said, "If that man's thunder lays eggs, my rattlesnake lays eggs", He looked at me and said, "Evey, you got me. Sell your eggs".

Over the years, my egg source dried up since the fellow I was buying them from passed away. I was over to my shop one day and I found my last "rattle snake egg". I'll bring it to show and tell some day.

Rockspectfully.

Evey

\*\*\*\*\*

### The Art of Suiseki

Suiseki is the art of enjoying and appreciating a stone in its natural state, just as nature created it. True Suiseki is an art dating back more than 600 years in Japan, and tracing its origins to the culture of ancient China.

Suiseki falls into definite styles. In shape and/or in patterns and markings, it may seem to resemble a mountain, a waterfall, sky and clouds, flowers, a tree or bush, a landscape or an abstract form. I Suiseki stone must be just as nature created it. One is permitted to cut the base for better seating, and a light polish may be applied to bring out luster and color, but no other treatment is permitted. A Suiseki stone can be displayed on a wooden stand or in a tray in water or sand. A Suiseki stone must be able to stand or speak by itself, providing joy, beauty and peace of mind.

Form and shape are all important in Suiseki. For example, a perfect quality jade boulder may not qualify as Suiseki. On the other hand, a plain but attractively shaped stone found somewhere in the Mojave Desert may be a perfect Suiseki specimen. Rock appreciation, as practiced in Japan, has nothing to do with the material value; the emphasis is placed on its intrinsic value.

For the rockhound, the chance of finding the right Suiseki stone is good, be it in a river bed, the mountains, the desert or along the beach. But when found, the Suiseki is YOURS to enjoy. Search for a Suiseki stone sometime. The fascinations of Suiseki with its curious beauty may give you a satisfied appreciative and peaceful approach to rock hunting.

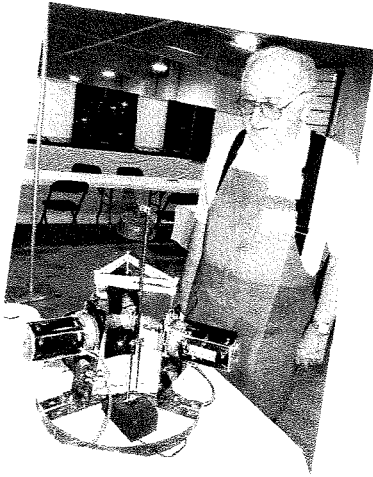
From The Michigan Mineralogical Society Conglomerate, Feb., 2002

via The Tulip City Conglomerate, July 2000

For great photos of Suiseki online try : [www.felixrevera-suiseki.com/casuisekisioc.html](http://www.felixrevera-suiseki.com/casuisekisioc.html) or

[www.bonsaiinformation.co.uk/waterfall.htm](http://www.bonsaiinformation.co.uk/waterfall.htm)

Judy



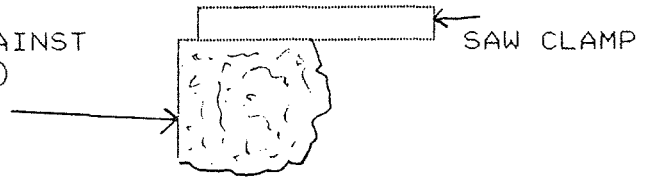
I met Curly at th 2002 KC show and he gave me permission to print information from his handout on how to make spheres. He was a great demonasrator. Don't miss seeing and talking to him if you ever get the chance. (EDITOR)

### Sphere Making by Curly Clough

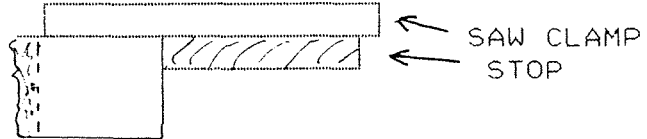
1. SELECT THE SPECIMEN THAT YOU WANT TO MAKE A SPHERE FROM AND CUT OFF ONE SIDE



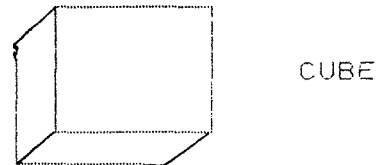
2. PLACE THE CUT OFF SIDE AGAINST THE SAW CLAMP (FIXED SIDE) AND MAKE THE SECOND CUT.



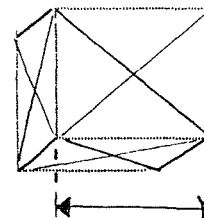
3. INSTALL THE STOP IN YOUR SAW. CLAMP THE SPECIMEN IN THE SAW AND CUT THE REMAINING TWO SIDES AND TWO ENDS OF YOUR SPECIMEN.



4. YOU SHOULD NOW HAVE A SQUARE CUBE.



5. MARK THE CUBE FROM CORNER TO CORNER.



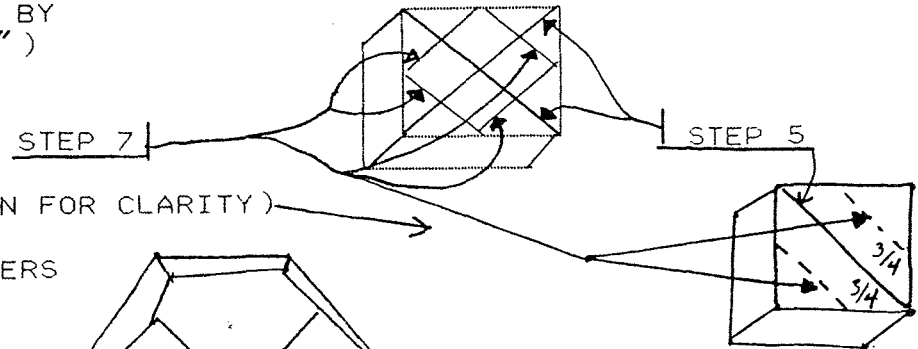
6. MEASURE THE SIZE OF THE CUBE.
  - a. DIVIDE THIS NUMBER BY 2
  - b. DIVIDE THIS NUMBER BY 2

EXAMPLE 3"

$$3" \div 2 = 1 \frac{1}{2}"$$

$$1 \frac{1}{2}" \div 2 = \frac{3}{4}"$$

7. DRAW A LINE IN EACH SIDE OF THE LINE DRAWN IN STEP 5 AND PARALLEL TO IT BY THIS AMOUNT (  $3/4$ " )



8. SAW OFF THE 8 CORNERS CREATED BY STEP 7.

A.W.R.

9. GRIND, ON A WET STONE, ALL THE EDGES UNTILL YOUR SPECIMEN IS AS NEAR A ROUND BALL AS POSSIBLE.
10. PLACE THE "BALL" IN YOUR SPHERE MACHINE. APPLY GRINDING COMPOUND AND WATER AS NECESSARY TO GRIND OFF THE ROUGH EDGES. CRADLE THE "BALL" WITH YOUR HANDS UNTIL IT STAYS IN THE GRINDING CUPS WITHOUT FALLING OUT.
11. CONTINUE GRINDING WITH FINER GRITS UNTIL ALL HIGH SPOTS AND ALL CRACKS OR BLEMISHES DISAPPEAR.
12. WHEN YOUR "BALL" IS PERFECTLY ROUND AND THERE ARE NO BLEMISHES. PLACE POLISHING PADS BETWEEN THE CUPS AND YOUR SPHERE AND APPLY POLISHING COMPOUND ON THE PADS.
- NOTE!! THOROUGHLY CLEAN YOUR CUPS AND PADS BETWEEN EACH STEP - OR REPLACE THEM WITH CUPS OR PADS SAVED FOR EACH STEP. NEVER USE A PAD FOR FINE POLISHING IF IT HAS BEEN USED FOR COURSE GRINDING.
13. ALLOW YOUR FINAL POLISHING PAD TO RUN DRY FOR YOUR FINAL POLISH.

## 2002 ELECTED OFFICERS

President	Susy McMahan	5636 Greenwood St.	Lincoln, NE 68507	464-0065
1 <sup>st</sup> Vice Pres.	Grant D. Bennett	721 No. 58 <sup>th</sup> St.	Lincoln, NE 68505	466-5377
2 <sup>nd</sup> Vice Pres.	Pat Akins, Jr.	5017 No. 6 <sup>th</sup> St.	Lincoln, NE 68521	477-1322
Secretary:	Vera Lyman,	420 N. 56th St.	Lincoln, NE 68504	464-6089
Treasurer:	Phyllis Parks,	2435 So. 19th St	Lincoln, NE 68502	476-6798
Board Member	David Heffelbower,	1819 Washington St.	Lincoln, NE 68502	cell 890-2794
Board Member	James Marburger	330 Locust	Hickman, NE 68372	792-2348

### Nominating Committee

3 years	John Harrison
	Aulden Stewart
2 years	Billie Heffelbower
	Judy Reilly
1 year	Jim Parks
	Edward Ridge

### Long Range Planning & By-Laws Committee

3 years	Susan Taylor
	Edward Ridge
2 years	Vera M. Lyman
	Roger K. Pabian
1 year:	Charles Wooldridge
	Kevin Schwartzman

Chairman-Immediate Past President James N. Atkins

### Standing Committees

Education / Librarian	Roger Pabian	MWF Liaison:	Vera Lyman
Field Trips:	Pat Akins, Coordinator	Scholarship:	
Historian:	Susy McMahan	Christmas Party	Susy McMahan
Membership Record:	Edward Ridge	2002 Show:	Roger K. Pabian
Programs:	Roger Pabian	2003 Show:	John Harrison
Housing/Property:	Jim Parks	2002 Swap:	Roger K. Pabian
Youth Activities:	Kay Jurgens	2003 Swap:	David Heffelbower
Auditing Committee:	John Harrison, Roger Pabian, James Marburger		

L. G. M. C. Web Page Address :

<http://nesen.unl.edu/lgmc/lgmc.html>

Geology Day Coordinator: 2nd Vice President

### Your PICK & SHOVEL Staff

Publisher:	Lincoln Gem & Mineral Club, Inc., P.O. Box 5342, Lincoln, NE 68505-0342	
<b>Editor:</b>	<b>Judy Reilly</b>	<b>421-3064</b>
Assistant	Phyllis N. Parks	476-6798
Business Reporter:	Vera Lyman	464-6089
News Reporters	All Club Members	
Circulation:	Jim Parks	476-6798

The *PICK & SHOVEL* is the official publication of the Lincoln Gem & Mineral Club, Lincoln, Nebraska. Articles and items appearing within may be reproduced in other club bulletins, provided proper credit is given to the *PICK & SHOVEL* and the author and that a reprint of the bulletin is sent to the editor of the *PICK & SHOVEL*.

The purpose of this corporation shall be to study, promote an interest in, and disseminate knowledge of lapidary and various Earth Sciences including but not necessarily limited to geology, paleontology and mineralogy. It shall be a particular purpose of the corporation to provide education in these fields to its members and the general public, especially to youth and student groups.

## J. J. & L. ROCKS and MINERALS

GEMS - CABS  
ROUGH - SLABS - MOUNTINGS  
STERLING SILVER - GOLD FILLED - 14K GOLD  
SILVER SUPPLIES - TOOLS - MACHINERY - NEW AND USED  
CUSTOM SERVICES FOR SLABS, FLAT LAPPING, AND CABOCHONS

*STARTING OUR 27th YEAR*

330 LOCUST  
HICKMAN, NE 68372-0068

PHONE  
402-792-2337

*"PROVIDING SUPPLIES FOR THE NOVICE TO THE DISCRIMINATING ROCKHOUND"*  
*Please Call for Appointment*

## LINCOLN GEM & MINERAL CLUB

Presents

Our

**45<sup>th</sup> Annual Show**

**PERSHING MUNICIPAL AUDITORIUM**

March 29 - 30, 2003

Show Chairman - John Harrison

Read your bulletin for new materials or specials from the above advertisers.

Advertising by rock-hobby business or interest is permitted with the approval of the Board. TI rate now set at \$15.00 per full page; \$7.50 per 1/2 page; \$5.00 per 1/3 page; and \$3.75 per 1/4 page(min) per issue, paid in advance. These ads will be placed through the bulletin as space permits.

**Subscription to the Pick & Shovel is \$10.00 per year mailed.**

Dues to Lincoln Gem & Mineral Club are as follows:

Adult(ages 16 and over)	\$10.00 per year
Junior(ages 12 to 16)	\$ 2.00 per year
Family Membership (Husband, wife, resident children under age 16)	\$22.00 per year

New memberships must be approved by the Board, after the applicant attends at least one meeting of the club and pays the above dues plus a \$5.00 registration fee.

