

CLUB EVENTS

May 23 General Meeting, Antelope Park Shelter near 31st & Sumner 7:30PM, (PLEASE NOTE THIS IS CORRECTION FROM APRIL PICK & SHOVEL.)

June 29 Limestone Day, Weeping Water

July 21 Rock & Mineral Grinding Party, Pioneers Park, Prairie Building, 1-4 PM. Open to public. Free. Stone cutting, polishing and finishing will be demonstrated by club members.

Sept 4 Board Mtg, Kinko's 48th&Vine ,7PM
26 General Meeting, Gere Library, 56th & Normal, 7-9PM
Geode Jam, Sheffler's Geode Mine, Alexandria, MO....more information will be forthcoming (SEE PAGE 4)

Oct 24 General Meeting...Halloween Party, Antelope Park Shelter

Nov. 21 General Meeting, Kellogg Center, 33rd & Holdredge

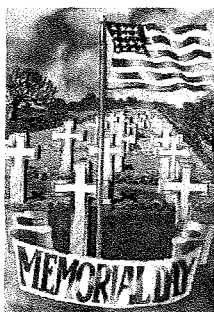
Dec. 8 Christmas Party/ Meeting, Antelope Park Shelter, 5-9 PM

May Meeting

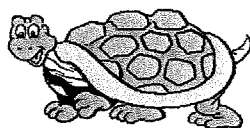
Program: Presentation of Scholarship
Dessert "Supper" with club providing coffee, tea and cold cuts & rolls. Club members bring your favorite desserts. Juniors will meet at 7PM.

Display Material:Stones showing optical phenomena- double refraction, chatoyancy, interference figures, etc. Examples:star stones, eyed stones, dichroic stones, etc.

THIS WILL BE A GREAT MEETING...OUR LAST BEFORE THE SUMMER BREAK. COME AND MEET OUR NEW MEMBERS, ENJOY GOOD FOOD, GREAT COMPANY AND MAYBE A FEW SURPRISES!



May 27,2002
REMEMBER...



PRESIDENT'S MESSAGE

This will be our last Pick & Shovel until September. Does that mean that school will be out soon? I do believe it will! And summer ... vacations and swimming and rock hunting and all the wonderful things that go with being outdoors will be part of the lifetime memories we make.

Our first meeting at Gere Library was a fun one, with Roger Pabian giving us a difficult but educational rock quiz. I say difficult because no one got 100% on the multiple choice answers to questions on specific minerals.

Or even missed just one, or two. But we learned a lot about the specimens on which we were being quizzed.Dave

Heffelbower won the prize of a year's free club membership for



having the most correct answers. And the microphone volume (or my voice volume) apparently violated the silence rules for the library.

We welcomed the new members who attended: Terry Van Butsel, Steve May, Evert & Marcia Claeson and their girls Monica and Carmen.

I look forward to seeing all of you at the Thursday, May 23 meeting!

.....Susy

REGIONAL SHOWS

- CALIFORNIA-JULY 12-14, PLACERVILLE,CA.**
- COMBINED NWF/AFMS-JULY 16-21, PORT TOWNSEND,WA.**
- MIDWEST-OCTOBER 4-6, SPRINGFIELD, IL AT THE IL. STATE FAIRGROUNDS. (PLEASE NOTE THIS IS A CORRECTION FROM THE APRIL PICK & SHOVEL.)**
- SOUTHEAST- OCTOBER 5-6, JACKSONVILLE, FLORIDA**

OTHER EVENTS TO CONSIDER

- MAY 18-19- ROCK SWAP,FAIRFIELD,IA.(641)472-5874**
- JUNE 14-16-MISSOURI MINES ROCK SWAP (319)3937193**
- AUGUST 16-18- MW FACETERS' GUILD 13TH ANNUAL FACETERS' SEMINAR, MOTT COMMUNITY COLLEGE, FLINT, MICHIGAN (SEE FLYER AT THE MAY MEETING)**

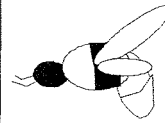
SPECIAL PRESENTATION

I am pleased to announce the very special presentation of Lifetime Membership and a special plaque for recognition of years of service to LGMC to Jim and Phyllis Parks. The awards were presented in their home, April 28 by Club President, Susy McMahan and Club Founder, Irl Everett. Also present were Roger Pabian and Vera Lyman, longtime club members. The following tribute, written by Irl Everett, sums up how we all feel about Jim and Phyllis. Congratulations for an honor well deserved!

When Roger first called me (to present the awards) I had no idea what to say. But as I sat and thought awhile, many memories passed through my mind. It seems that I first met Jim and Phyll at the museum where the club met for many years. From the first, they were always interested in the club and its future and with this interest was also a real desire to enjoy the hobby of collecting, finishing and displaying at all the shows.

We came through some ups and downs through the years. One club doing two national shows on their own is quite a feat in itself. But through all this and the other 44 shows, we could always count on Jim and Phyll. They have been the greatest asset to our club. They both have held many positions in the club; president, treasurer, vice president, show starter uppers, and working with the youth, among others. At many shows they helped with the Nebraska Case and also the State of Nebraska Case. You name it and they have done it all. Through the years, as we have grown older and maybe have slowed down a bit, both of them have come to all the shows and have been there from start to finish. I was so glad when I was able to be at the 2002 show and once again meet Jim and have a chuckle or two. It was just the right time for both of us, as you know we have both slipped a little.

So when Roger called me about this little assignment, I said to myself, "It's about time we honor Jim and Phyll." After all, they have been very deserving of this moment and I am proud to say, "Jim and Phyllis, we of the Lincoln Gem and Mineral Club present to you, your well-deserved life membership card. You are long overdue but now you can see just how much we love you and have enjoyed the times we have had together."



WHAT'S THE BUZZ? by Judy Reilly

May sure is a busy month, isn't it? From May Day to Mother's Day to Memorial Day everyone seems to be bustling with new energy. I guess this comes from the anticipation of warmer weather and all the chores and activities that the higher temperatures bring.

I have already driven back east this month to help a friend move her daughter and her whole dorm room, it seemed, back to Wyoming. We visited Hershey, PA. and Colonial Williamsburg, VA., places I had never been even though I grew up in PA. There was a quarry near Hershey but I didn't have time to get in on any rockhounding activities. I did purchase some "specimens" of course at a touristy shop.

Now I am settled back in NE. Apparently the monsoons came through while I was gone because the grass in my back yard was high enough for a machete instead of a lawn mower. But that is part of the joys of May...high grass, new flowers, new growth, new experiences.

Have a wonderful summer! Remember to send any articles or ideas for the next newsletter, which you will receive in Sept. to me @ jshannonreilly@aol.com or mail them to the club mail box.

OOPS! Last month I had the wrong dates for the May meeting page 1 and for the Sept. and Oct. events listed on page 10. The following are corrections:

General Meeting: May 23, see page 1

Midwest Federation Convention and Show: Oct 4-6 in Springfield, IL., see page 1

Sheffler's Geode Jam, dates not certain, see page 4

Des Moines Lapidary Society Show, dates and location to be announced

Hopefully, OOPS, will not be an ongoing column but as Phyllis says, "thanks for reading!"

New club member, Mark Renter, recently had heart surgery. We wish him well and hope to be seeing him again soon.

FEDERATION NEWS

Crying Wolf

from Mel Albright

In this age every bureaucratic nanny is trying to protect everybody from something. Lawyers are trying to protect manufacturers from lawsuits. We are buried in warnings. Almost every item has some warning printed on it-sometimes several. If you hunt, you will find there is a MSDS (material safety data sheet) issued for WATER as required by the government. A little search says vinegar is considered one of the most dangerous substances around. Stickers say not to let the baby put its head in a bucket of water. Plastic sheets repeatedly warn that they aren't for putting over your nose. And on and on.

If you are like me, you are starting to ignore all the safety warnings. I don't even read them anymore. There are so many that that there might as well be none.

BUT, some of them are somewhat serious. They should be followed carefully. Every new prescription carries several pages of fine print mumbo about how it acts. Buried in there are safety warnings such as "Don't take on an empty stomach." "Do not eat grapefruit products while taking this medicine." "Call your doctor if these symptoms occur." These should be observed. But, you have no warning about the seriousness of the warnings. Are they warning against a possible headache? Sometimes, "Don't take this medicine with that medicine" is a matter of life and death.

Some materials rockhounds use give the same problems. Strong acids ALL warn against skin contact. Hydrochloric acid burns somewhat (and is very dangerous to breathe)but is present in your stomach. Nitric and sulfuric acids give second and third degree

skin burns. However, all three give you a little time to minimize damage by rapid washing with water. But ONE small drop of hydrogen fluoride can KILL you. So getting complacent about using acids can be fatal. Some flammable solvents are actually hard to get burning. Some flash easily from heat or static electricity. So casual use of solvents can be dangerous. Some tools can bruise you if misused while others can take off a finger.

SO WHAT DO YOU DO? First, read the information on everything you buy. Then decide what the warnings are for your status. Then remember EVERY TIME you use them to mentally review the safety conditions needed and be sure you follow them.

Remember, sometimes the wolf really does show up.

AFMS NEWSLETTER, May, 2002

IT's A BIG STONE!

from Jon Spunaugle AFMS Scholarship Foundation

Weighing almost 6,000 carats, the "Dare Devil" really is a big faceted stone. When you hold it in the light and turn it ever so slightly, it flashes a brilliant variety of colors-salmon, lilac, yellow, red...

Cut by the Dare Devil Faceters, members of the Inter-mountain Faceters Guild, the stone has been donated to the Scholarship Foundation and we are offering you a chance to own it. It's a salmon colored cubic zirconia and it really is an impressive item. It's been valued at several thousand dollars.

Tickets for the drawing are \$5 each or 5 for \$20 and can be purchased by sending a check, payable to "AFMS Scholarship Foundation" to:Jon Spunaugle, 1000 SE 144th Ct.,Vancouver, WA. 98868-70333. Include a stamped, self-addressed envelope with your order along with your name, address and phone number. Tickets can also be purchased at one of the upcoming Regional Fed Shows (Rocky Mt, Eastern,CA,or NW/AFMS.) Drawing will be at the NFMS/AFMS Convention in Port Townsend this July. You need not be present to win.

***Editor's Note: This is an article from MWF newsletter, May, 2002, edited for space.. I looked up the website for Dare Devil Faceters and it has a gorgeous photo of the stone.

The website is: www.amfed.org/dare_devil.htm

Adventures by Grant

Something a little different in this adventure...it takes place in Thailand.

I spent a year there as a line chief, which means that all the flyable air-craft set up for a mission were inspected and signed off by me. We worked twelve hours a day or night...no days off there.

After getting off work, I would get a bite to eat, then off to my quarters to write letters home. I would then go to the base lapidary shop where I was taught how to cut different stones. They really hooked me for all the years that followed.

I discovered that a person could get some really nice material in the local village. But to avoid paying the high prices asked for by the hawkers, bargaining became part of the fun. I usually got a good price or I didn't buy. My most memorable purchase was pigeon blood starry rubies. The asking price was \$20 per stone but the final price was \$2 per stone! I took the rubies to the base lapidary shop and repolished them, using the "cup" method, with which some of you might be familiar. I had a small cup about the size of a half dollar and used a very small amount of graded diamond powder and a little olive oil. The stars were much sharper after this polishing, though it did take a lot of wrist action to get the job done. I was able to make ruby earrings, a necklace and a ring. I sent all four pieces to Bangkok for mounting and they all came back surrounded with seed pearls. What a beautiful job they did! I might show them at a future show and tell at a club meeting.

So you see, a lot can be learned if you are willing to try.

See you down the road at a future show or meeting.

Grant D. Bennett, 1st Vice President

The club is still planning a trip to Weeping Water for Limestone Day June 29. Hopefully plans can be finalized at the May 23rd meeting.

Also, we are still talking about a trip to Sheffler's Geode Mine in Alexandria, MO. Though the dates are not yet confirmed, Tim Sheffler says the annual Geode Jam will probably be the weekend of September 21-22 or in early Oct. More info will be available in the Sept Pick & Shovel.

Field trips



May 3, 2002: Linville Harms (left) of Sedalia, Missouri, and Bill and Betty White examine the open pit mine for Mozarkite, the Official Missouri State Gemstone. Photo by Roger Pabian (see article by Roger Pabian, p.5-6)

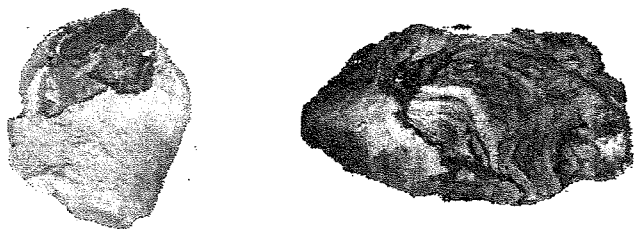
Mozarkite, Missouri's State Gem

On May 3, I took a trip to Kansas City and then on to Lincoln, Missouri, to examine the in place occurrence of Mozarkite, the Official State Gemstone of Missouri. As part of my ongoing study of cryptocrystalline and amorphous quartz family gemstones, I thought that the Mozarkite mine would be a worthwhile trip.

In Kansas City, I joined up with Bill and Betty White on Friday afternoon. Bill and I spent much of the afternoon at one of the major tool houses there and I purchased quite a few diamond tools and other tools that would be of use for stone and metal work. We also hit one of the retail salvage outlets, a store that carries distressed merchandise, as they often have many tools of considerable value for very low prices

On Saturday morning at about 7:00 A.M. we left Independence for the small town of Lincoln, Missouri. The town is famous for its annual rock swap in September. There we teamed up with Linville Harms, owner of the Mozarkite mine, and then went on to the mine.

I have added some imagery of both Mozarkite and the Mozarkite mine (see page 4) so that you can get a better idea of what the site is like.



Mozarkite is not an accepted mineral name but is simply a trade name that was developed to promote the acceptance of the stone as Missouri's official

State Gem and to generate sales to both lapidaries and tourists. The name has found acceptance in some circles but is not an acceptable mineral name in others.

Mozarkite has formed in place in marine sedimentary rocks of Ordovician age---it probably is most common in the Jefferson City Formation. The Jefferson City Formation is comprised mostly of dolomite with silty and cherty stringers running through it. There are very few fossils in dolomitized rocks as the addition of Magnesium to the Calcium Carbonate of the limestone usually results in complete recrystallization of the rock and destruction of any fossils or sedimentary structures therein. We did observe a fragment of a brachiopod shell that escaped destruction. It appeared to be a flat shelled, long-hinge lined form, probably a strophomenoid, but no other determination could be made of it.

Much of the local lore about Mozarkite attributes it to igneous activity but there is no evidence for any in that area Ordovician or younger rocks.

The Mozarkite appears to be of strictly marine sedimentary origin. Some of the nodules show evidence of an accumulation of siliceous gel or ooze on their outer surfaces.

There appear to be three different facies of Mozarkite. The gemmy kind is a dense, brittle form that shows no crystallinity at 10X magnification. A second kind is what the locals call "sugary" Mozarkite. Some of this is quite colorful and has interesting patterns and enjoys some gem use. The "sugary" kind, however, does not polish nearly as well as the dense, brittle kind. Then, there are some nodules that appear to be very fine sandy textured.

The three facies or textures of Mozarkite suggest that sorting of particles may have been one of the key factors in the origin of this material.

Sorting of particles simply means that as some energy form such as wind or flowing water moves a mixture of unconsolidated particles, the heaviest or largest particles are the first ones to drop out of suspension. You can observe this phenomenon on the gravel bars of a stream or in the bars along beaches, estuaries, or lagoons. The coarsest particles will be on the upstream end of the bar or nearer the bottom of the bar.

It may well be that the gem Mozarkite is a quartz argillite, a sedimentary rock made up of quartz particles of clay size; that is, smaller than 1/256th of a millimeter. The gemmy facies could also be derived from silica of organic or volcanic origin. The "sugary" facies may represent the silt fraction of the sediment, 1/256th of a millimeter to 1/16th of a millimeter particles. The fine sandy facies is made up of the particles larger than 1/16th but smaller than 1/4 mm.

The source for the silica that makes up Mozarkite is currently not known. It may have been from Precambrian granitic rocks that are found to the south and east.

Sponge spicules may have been the source of silica; I will not totally disregard them. However, I have usually favored volcanic ash as the source of silica for large bodies of chert or flint in marine sedimentary sequences. If there was any volcanic activity involved with Mozarkite, it was from volcanoes that were far away from the Mozarkite bearing strata.

Mozarkite is a very interesting gem material that could shed a lot of light on the geologic events and processes that led to its formation. My comments above are only a few ideas about its occurrence. Like many other ideas on this stone, my hypotheses need more documentation before they can either be accepted or rejected. My hypothesis should probably

read as follows: "Mozarkite is a quartz argillite of marinesedimentary origin that formed in situ in shallow seas of Ordovician age. The source of the quartz is shield rocks of Precambrian age that lie to the southeast of the area from which it is now found."

To prove that, several things need to be done. First, properly oriented (top and north) nodules need to be collected from in place in the mine pits. The nodules should not be examined in the field to avoid "high grading" the material. An outcrop map or diagram would need to be made that shows the places from which each nodule was taken. Similar sampling should be carried out from several different layers in several different parts of the mine.

The facies of each nodule would need to be located on the map. Does one zone produce only sandy material whereas another produces only gemmy material? Or do these facies occur at random?

Thin sections (30 microns) would have to be made. The nature of the particles (angular or rounded) and any cement between them would need to be noted. Is there a silica cement between the particles or does their angularity hold them together.

Then, other occurrences, both geographic and stratigraphic of Mozarkite would have to be noted. The sedimentary structures in the Mozarkite and the host rock would also have to be observed and recorded.

By the time that all of this is done, one has done enough work to earn a Master of Science Degree. As you can see, there is no easy answer for Mozarkite.

Perhaps, as a club, or group of clubs, we might think of funding a student to carry out the above kind of research.

Roger K. Pabian

LINCOLN GEM & MINERAL CLUB, INC.

Combined 44th Annual/State Show, March 23-24, 2002

"- - a blast from the past"

INCOMES:

14 Dealers @ \$ 400.00	\$ 5600.00	
6 Demos @ 35.00	210.00	
Miscellaneous Income-10% over base	70.00	
Misc. Income - Plant sales	90.00	
Misc. Income - Interest on CD	26.46	
Gate Admissions - Sat. 2722.00		
- Sun. 1968.00	4690.00	
Total Receipts		\$ 10,686.46

EXPENSES:

Floor: Rent @ \$ 1000.00 per day	2500.00	
Tables	895.00	
Chairs	225.00	
Drape & Table Skirt	74.50	
Table Cover	124.51	
Tapes for covering	19.73	
2 Large Easels & Pads	223.10	
2 Used Display Cases	40.00	
Elevator Operator	175.75	
Power Hook-ups-Commonwealth	625.00	
Security	815.00	
Insurance	100.00	
Advertising-KFOR 546.00		
Journal-Star 556.06	1102.06	
Preprinted flyers	126.06	
Postage-Discount Cards	189.00	
Hand-out Programs	79.88	
Ribbons-Recognitions	46.31	
Awards-Dealers/Displayers	276.77	
Lectures/Programs- 5 @ 50.00	250.00	
Exhibit Decorations (Plants)	99.60	
Special Features	850.00	
Dealer Breakfasts	129.72	
Misc.- Show Chair 111.75		
Floor " 6.79		
Demo " 13.60		
Sales " 6.90	139.04	
Property Storage	756.00	
State/City Sales Tax Payable 304.85		
Total Expenses per Contract		\$ 10,166.88
Tentative Gain per 2002 Contract		\$ 519.58

Youth Activities at Show: \$ 532.10

Silent Auction Receipts for NAOESCI 538.55

2 Program gratuities returned 100.00
 (Bob Fixture, R.M. Joeckel)
 Designated for Special Lapidary Fund

LINCOLN GEM & MINERAL CLUB, INC. - BOARD OF DIRECTORS - April 3, 2002
7:00 P.M. @ Kinkos, 48th & Vine, Conference Rm.

Present: Jim Marburger, Susan McMahan, Vera Lyman, Dave Heffelbower
Grant Bennett

Visitors: Judy Reilly, John Harrison, Roger Pabian, Ed Ridge

President McMahan called the Meeting to order.

Minutes of the March Meeting were approved with motion by Grant Bennett, 2nd by Dave Heffelbower. Carried.

There was no Treasurer's report, due to absence of Phyllis. Jim is going through some health problems. Jim & Phyllis are both in our thoughts.

OLD BUSINESS: The LPS/Pfizer Science Fair at Ag Hall had an excellent crowd. Those from Club who participated were; Roger Pabian, Ed Ridge, Susan McMahan. It was fun; 581 kids signed for exhibits.

NEW BUSINESS: Lapidary entries will be at State Fair. Club members may enter their displays. Roger has been asked to judge Lapidary. Motion made by Jim Marburger, 2nd by Grant Bennett for Club members interested to enter. Motion carried.

COMMITTEE REPORTS: Roger Pabian, Chairman reported that overall, Show was great. Special Features were best in many years. Phil & Patty did excellent job with Programs. Gate was down a bit, but return on discount mail cards was excellent. Set-up went smoothly; and Dealers were happy. Addition of color was great.

Scholarship - Paul D. Hansen was chosen by Board to be recipient. The presentation will be at May 23rd Meeting.

Field Trips - Roger is willing to do 1 or 2 Sunday trips. Other possibilities are Limestone Days @ Weeping Water, June 29. Sheffler Geode Mine in Iowa; leave on Fri. & return on Sun. sometime. Also a possible trip to Mozarkite Mine in MO.

Membership - The following have made application and paid dues for membership. Evert & Marcia Claesson & Family; Steve May; Mark & Kammie Renter & Family; Kate Speicher; George Rethmeier; Teresa VanButsel.

They were all approved with motion by Grant Bennett (pending the attendance of a Meeting) 2nd by Dave Heffelbower. Motion carried.

BOARD granted approval for Sec. Vera Lyman, (at Treas. Phyllis Parks request) to pay Bills and assume Treasurer's duties. Motion by Dave Heffelbower, 2nd by Grant Bennett. Motion carried.

Next Board Meeting - May 1, 2002, 7:00 P.M. - Kinkos.

May 1 is also deadline for Pick & Shovel Copy.

Respectfully submitted,

Vera Lyman
Vera Lyman, Secretary

Addendum to Minutes: Roger entertained motion that Jim & Phyllis Parks be presented with Life Membership (with plaque) and also plaque of "appreciation for many years of outstanding service to the Club. Motion was made by Jim Marburger, 2nd by Grant Bennett. Motion carried.

LINCOLN GEM & MINERAL CLUB, INC. - GENERAL MEETING - April 25, 2002
@ Gere Library, RM #1 - 56th & Normal 7:00 - 9:00 P.M.

Meeting opened with Pledge of Allegiance led by Roger Pabian.

22 Members in attendace (including 5 new members) and 2 new Junior Members. Thanks to Kay Jurgens for her special participation with the Juniors.

Our Annual Show replaced our General Meeting in March. March Board Minutes were approved with motion by Jim Atkins, 2nd by Kay Jurgens. Motion carried.

Copies of Treasurer's report handed out. Motion for approval by Grant Bennett, 2nd by Kay Jurgens. Motion carried.

ANNOUNCEMENTS: Jim Parks is very ill, at home with Phyllis & Fam. Kay Jurgens, our Juniors leader, lost her newborn niece, Alexis. In addition, Kay's mother has been very ill. We extend our care and support. Cards appreciated.

OLD BUSINESS: The efforts of our Club and others were successful in saving the position of Museum Curator at Fort Robinson from UNL budget cuts. But now on second round of cuts - - wait and see!

SHOW REPORT: Roger Pabian, Chairman, itemized report and announced a profit of \$ 519.58. He thanked everyone for all their help and participation. Members in turn thanked Roger for his "excellent leadership" in this endeavor.

PICK & SHOVEL deadline is May 1 (extended to May 6 by Editor). Board Meeting also May 1 @ 7:00 PM @ Kinkos.

MAY GENERAL MEETING will be on the 23rd (Thurs) at Antelope Park Shelter. Bring Desserts! Club will furnish Coffee, Tea & table service. It will be a fun and exciting Meeting with Scholarship Award: recipient presenting Program. There will also be lots of other exciting things! Plan to attend - - it's the last Meeting before summer! Meeting adjourned.

PROGRAM: Roger Pabian, Chairman, presented an excellent "members participate" Program. Gems & Minerals displayed in case with multiple choice answers. Each received a sheet numbered from 1-21. The person coming up with the most correct answers received a free membership for 2003. Winner was Dave Heffelbower. Everyone participated - great enthusiasm and fun! THANKS ROGER.

Respectfully submitted, Vera Lyman, Secretary

LGMC Treasurer's Report for April 2002

Pinnacle Checking Balance on March 31, 2002 \$ 10836.31

April Receipts:

Membership Dues & Registrations	27.00	
Donation-Education, Scholarship Fund	50.00	
Suspense-Member Badges Paid	<u>24.28</u>	<u>101.28</u>

April Payments:

Kinkos-Apr Board Meeting	15.00	
Pershing-Set-up Day Refreshments	345.76	
Postage-April P & S	71.25	
March P & S Printing	105.78	
Treasurer (PP) Copies	12.80	
Secretary-Expense (1/1 - 4/20/02	50.67	
Plaques-Life Members/Appreciation	64.16	
Membership Refund	20.00	
April P & S Printing	45.47	
2002 Show Exp. paid in April	<u>5,041.67</u>	<u>5,772.56</u>

Pinnacle Checking Balance on April 30, 2002 \$ 5165.03



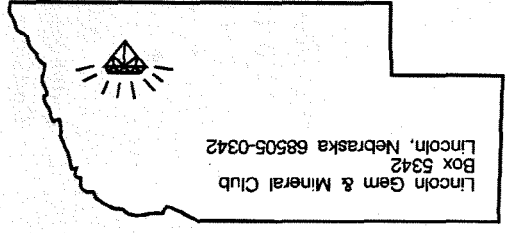
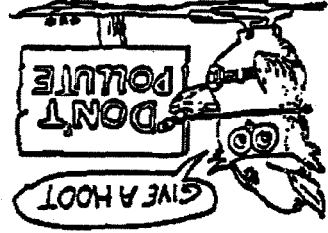
Associated with



Susy McMahan
5636 Greenwood St.
Lincoln, NE 68507

Help Eliminate Litter Please

H. E. L. P.



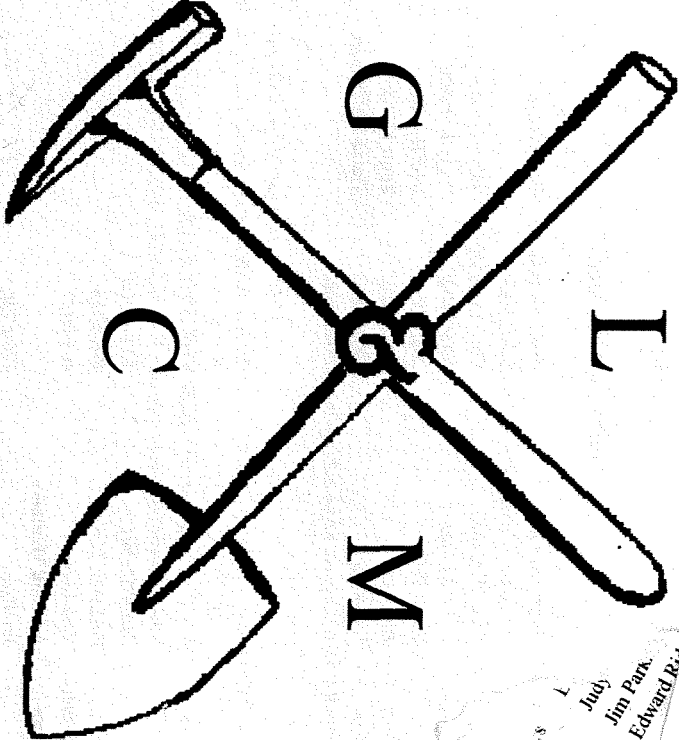
Lincoln Gem & Mineral Club
Box 5342
Lincoln, Nebraska 68505-0342

Mail Exchange Bulletins To:



THE PICK & SHOVEL

May 2002



OFFICIAL PUBLICATION OF

LINCOLN GEM & MINERAL CLUB

LINCOLN, NEBRASKA

1 year \$
Judy
Jim Park
Edward Rev.