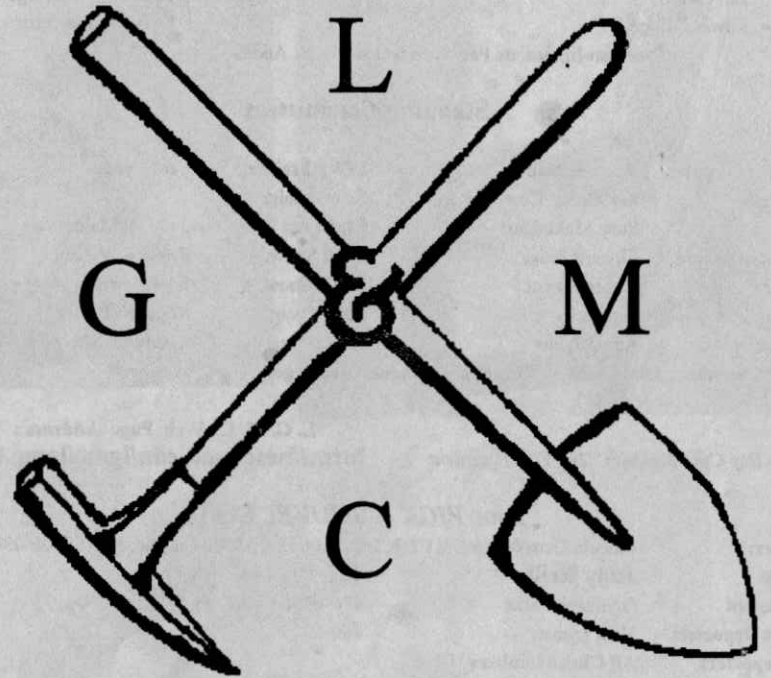


THE PICK & SHOVEL

April 2002



OFFICIAL PUBLICATION OF
LINCOLN GEM & MINERAL CLUB

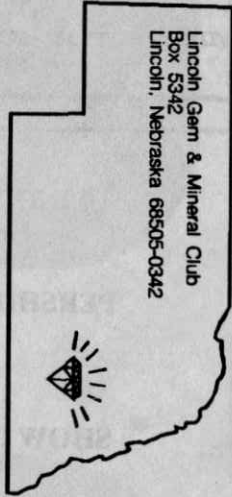
LINCOLN, NEBRASKA



H. E. L. P.
Help Eliminate Litter Please

Mail Exchange Bulletins To:

Lincoln Gem & Mineral Club
Box 5342
Lincoln, Nebraska 68505-0342



Associated with

LIBRARIAN

2002 ELECTED OFFICERS

President	Susy McMahan	5636 Greenwood St.	Lincoln, NE 68507	464-0065
1 st Vice Pres.	Grant D. Bennett	721 No. 58 th St.	Lincoln, NE 68505	466-5377
2 nd Vice Pres.	Pat Akins, Jr.	5017 No. 6 th St.	Lincoln, NE 68521	477-1322
Secretary:	Vera Lyman,	420 N. 56th St.	Lincoln, NE 68504	464-6089
Treasurer:	Phyllis Parks,	2435 So. 19th St.	Lincoln, NE 68502	476-6798
Board Member	David Heffelbower,	1819 Washington St.	Lincoln, NE 68502 cell	890-2794
Board Member	James Marburger	330 Locust	Hickman, NE 68372	792-2348

Nominating Committee

3 years	John Harrison
	Aulden Stewart
2 years	Billie Heffelbower
	Judy Reilly
1 year	Jim Parks
	Edward Ridge

Chairman-Immediate Past President James N. Atkins

Long Range Planning & By-Laws Committee

3 years	Susan Taylor
	Edward Ridge
2 years	Vera M. Lyman
	Roger K. Pabian
1 year:	Charles Wooldridge
	Kevin Schwartzman

Standing Committees

Education / Librarian	Roger Pabian	MWF Liaison:	Vera Lyman
Field Trips:	Pat Akins, Coordinator	Scholarship:	
Historian:	Susy McMahan	Christmas Party	Susy McMahan
Membership Record:	Edward Ridge	2002 Show:	Roger K. Pabian
Programs:	Roger Pabian	2003 Show:	John Harrison
Housing/Property:	Jim Parks	2002 Swap:	Roger K. Pabian
Youth Activities:	Kay Jurgens	2003 Swap:	David Heffelbower
Auditing Committee: John Harrison, Roger Pabian, James Marburger			

L. G. M. C. Web Page Address :

Geology Day Coordinator: 2nd Vice President <http://nesen.unl.edu/lgmc/lgmc.html>

Your PICK & SHOVEL Staff

Publisher:	Lincoln Gem & Mineral Club, Inc., P.O. Box 5342, Lincoln, NE 68505-0342
Editor:	Judy Reilly 421-3064
Assistant	Phyllis N. Parks 476-6798
Business Reporter:	Vera Lyman 464-6089
News Reporters	All Club Members
Circulation:	Jim Parks 476-6798

The *PICK & SHOVEL* is the official publication of the Lincoln Gem & Mineral Club, Lincoln, Nebraska. Articles and items appearing within may be reproduced in other club bulletins, provided proper credit is given to the *PICK & SHOVEL* and the author and that a reprint of the bulletin is sent to the editor of the *PICK & SHOVEL*.

The purpose of this corporation shall be to study, promote an interest in, and disseminate knowledge of lapidary and various Earth Sciences including but not necessarily limited to geology, paleontology and mineralogy. It shall be a particular purpose of the corporation to provide education in these fields to its members and the general public, especially to youth and student groups.

J. J. & L. ROCKS and MINERALS

GEMS - CABS
ROUGH - SLABS - MOUNTINGS
STERLING SILVER - GOLD FILLED - 14K GOLD
SILVER SUPPLIES - TOOLS - MACHINERY - NEW AND USED
CUSTOM SERVICES FOR SLABS, FLAT LAPPING, AND CABOCHONS

STARTING OUR 27th YEAR

330 LOCUST
HICKMAN, NE 68372-0068

PHONE
402-792-2337

"PROVIDING SUPPLIES FOR THE NOVICE TO THE DISCRIMINATING ROCKHOUND"
Please Call for Appointment

LINCOLN GEM & MINERAL CLUB 45TH ANNUAL SHOW

PERSHING MUNICIPAL AUDITORIUM
MARCH 29-30, 2003

SHOW CHAIRMAN- JOHN HARRISON

Read your bulletin for new materials or specials from the above advertisers.

Advertising by rock-hobby business or interest is permitted with the approval of the Board. The rate now set at \$15.00 per full page; \$7.50 per 1/2 page; \$5.00 per 1/3 page; and \$3.75 per 1/4 page(min) per issue, paid in advance. These ads will be placed through the bulletin as space permits.

Subscription to the Pick & Shovel is \$10.00 per year mailed.

Dues to Lincoln Gem & Mineral Club are as follows:
Adult(ages 16 and over) \$10.00 per year
Junior(ages 12 to 16) \$ 2.00 per year
Family Membership (Husband,wife,resident children under age 16) \$22.00 per year

New memberships must be approved by the Board, after the applicant attends at least one meeting of the club and pays the above dues plus a \$5.00 registration fee.

CLUB EVENTS

- April 25 General Meeting, 7-9PM, Gere Library, 56th & Normal
- May 1 Board Meeting, 7PM, Kinko's 48th & Vine
31 General Meeting, Antelope Park Shelter near 31st & Sumner 7-9PM, "Dessert Supper" with club providing coffee
- June Field Trips (see. p.8) Suggestions?
- July 21 Grinding Party (time and place to be announced)
- Sept 26 General Meeting, Gere Library, 56th & Normal, 7-9PM
- Oct ? Field Trip (see p. 8)
24 General Meeting...Halloween Party, Antelope Park Shelter
- Nov. 21 General Meeting, Kellogg Center, 33rd & Holdredge
- Dec. 8 Christmas Party, Antelope Park Shelter

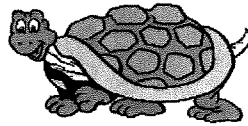
April Meeting

Program: "Gem Identification" quiz. There will be 20 stones in a case along with some data for each and it will be multiple choice. The person with the best score will have 2003 dues paid by the club. There will be other prizes too. (Does guessing "blue rock" count?:EDITOR)

Display Material: Spring show acquisitions

Thank You

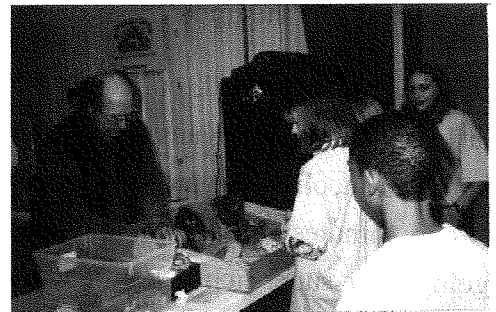
Special Thanks to the following members for exhibiting materials at the February meeting: Jim & Phyllis Parks, faceted and faceting materials; Ed Ridge, mixed stones and lapidary work; Susy McMahan, dopped stones; Roger Pabian, Montanna agate and South Platte Platte River agate, wood and jasper.



PRESIDENT'S MESSAGE

Spring is here!! The show was great!! We had wonderful dealers, demos, programs and the greatest customers! Thank-you to all the hard working members!

The (Lincoln Public Schools)- LPS/ Pfizer Science Fair was on March 19 and there were 581 kids displaying their projects. Add to those numbers parents, grandparents, siblings and best friends, meant that we had a great turnout to watch LGMC's demos. Ed Ridge had many rocks to share, and his display of fluorescent light/rocks was a big hit. Roger Pabian and myself, Susy



McMahan demonstrated lapidary. I answered hundreds of questions from fascinated future rockhounds, and I know Ed and Roger did also. One little fellow wanted to know if I made the rocks. That one almost left me speechless, which doesn't happen often. I encourage you to sign up next year to demo, it is a lot of fun, and you get a free t-shirt and travel mug!



Be prepared- pick out your best cabochon! Make one from that slab you have been saving for later because it is so unusual. The Nebraska State Fair has a category for Lapidary Arts. That means that at Fair time (Aug/Sept) we can compete for that blue ribbon, and at the same time give people a chance to see our craft and how beautiful it can be. So get to work now, and we will have entry forms available at the May meeting!

Susy

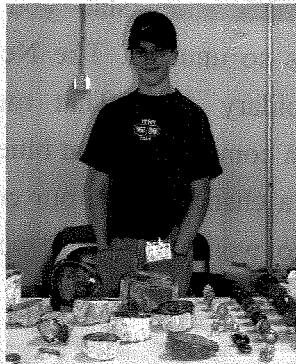


YOUTH NOTES

by Chris Akins

Hi, I'm Chris Akins and I've been a member for about four or five years. My dad started to collect petrified wood maybe two years before that on a family vacation to Arizona. He began to gain interest in the large rocks (just small enough that I could carry them, though) and I started to collect opal. The first thing that grabbed my attention was the awesome color, the second was the price.

So I started out small, collecting artificials at different shows like Kansas City and the show here in Lincoln. I began to polish them about twenty minutes after I got home thinking I was going to be super rich. After many ideas failed, (like trying to save up for a dealer's booth at the Lincoln show and selling them on ebay and making a fortune), I decided to just collect them. I saved up enough money to buy some cheaper opal, and received different pieces from several other members. I set up a small workshop in the back of my garage with all my rocks, grinder, and the candle I used to melt dop wax. I brought my first finished slocum stone piece to the Lincoln show to show some of my supporters and friends. At this point in time it is on the waiting list to be put in the setting. This will be my first finished piece that will be put in a setting. I am currently working on another stone, a gilson doublet that also will be put in a setting.

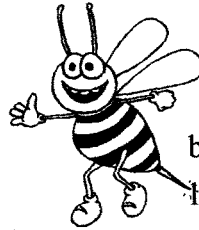


Chris at the KC Show, March 7, 2002

Photo by Judy Reilly

WHAT'S THE BUZZ?

by Judy Reilly



Well, I'd say the 44th annual show was a big success! I sure had a lot of fun and got a little taste of all the planning and hard work it takes to get a show like this off and running. On behalf of the show committee and the whole club, I want to take this opportunity to thank Roger Pabian for his leadership and the incredible amount of time he put into making the show so great. Your expertise and dedication is greatly appreciated. Thank you, Roger.

It was sure great seeing the Parks family at the show. Jim was there and seemed to be really enjoying the displays. Well, from what I hear, Jim, many of the displays, mine included, had specimens from your collection. We are keeping you and your family in our thoughts and prayers.

I finally met a club icon, Irl Everett. What a delight! My idea for a future meeting would be to have all of the original members who are still in Lincoln talk to us "newbies" about how the club was formed and how it has changed over the years.



The Newbie & The Icon

Another highlight of the show for me, was my eight-year old niece, Allison, who is getting to be quite a rock collector. She enjoyed helping at the show, was able to buy a few new things for her collection, and even met a new friend.

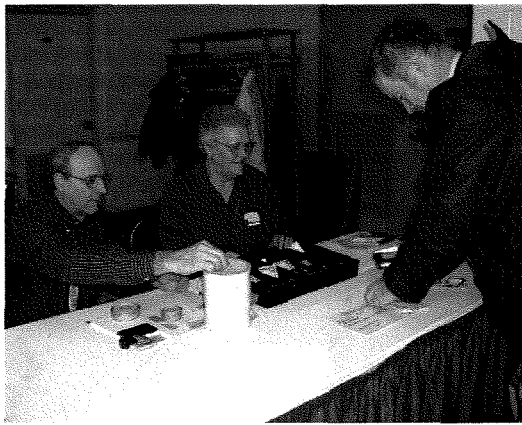
Some really great news is that we have some new paid membership applications! They are as follows:

- Evert & Marcia Claesson & children, Carmen, age 9 & Monica, age 7, 1365 N. 39th Street, Lincoln, NE 68503 466-0974
- Mark & Kammie Renter & children, Alex & Ian, 5705 Martell Rd, Hickman. NE 68372 (402) 792-2975
- Steve May, 3032 Laredo Drive, Lincoln, NE 68516 421-8994
- Kate Speicher, 1800 S. 41st Street, Lincoln, NE 68506 489-7836
- George (Ted) Rethmeier, PO Box 161, Douglas, NE 68344 (402) 450-0145
- Theresa Van Bietsel, 1725 S. 26th Street, Lincoln, NE 68502

WELCOME, WELCOME, WELCOME TO ALL OF YOU!

We hope to see you at the April meeting.

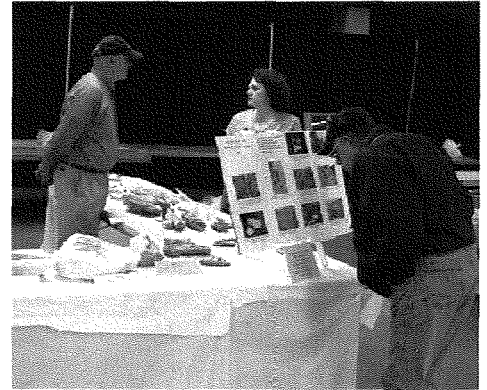
The 44th Annual Lincoln Gem and Mineral Club Show, "...blast from the past" was really a *BLAST!*



Jim Atkis and Vera Lyman sell a ticket to one of the 1414 people who attended the show.



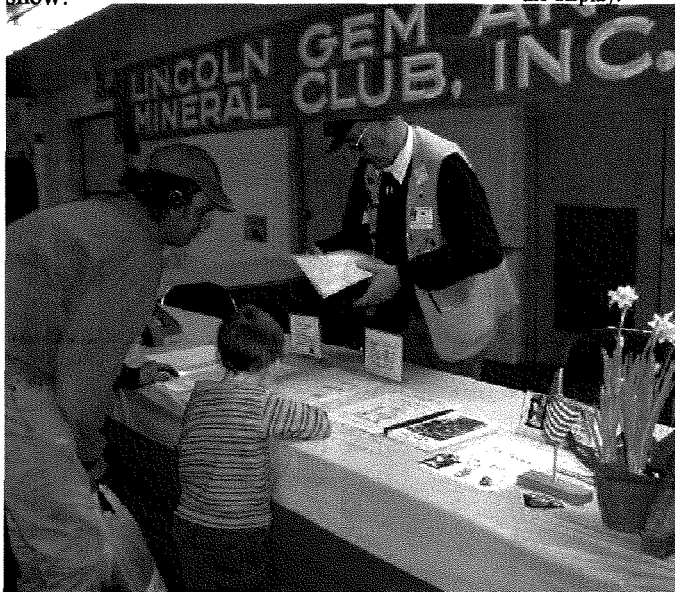
Adeline Nolde was one of the club members who helped greet people.



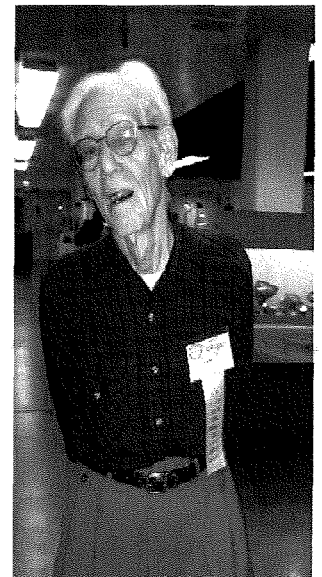
NAOESCI President, Ben Vrana and LGMC President, Susy McMahan discuss show topics while a guest examines the display.



Two great ladies of the LGMC, Marie Taylor & Phyllis Parks enjoy a break together.



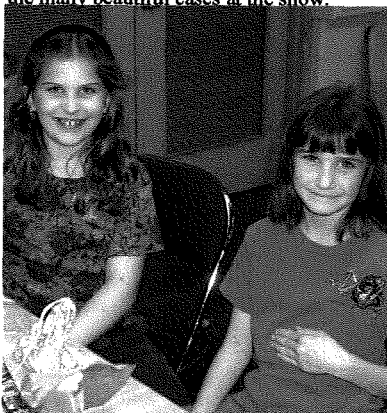
Grant's efforts at the Membership Booth yielded three new single club memberships and two new family memberships!



Paul Brauch pauses for a moment for this photo Sunday.



New member, Dan Dexter-Guy and Show Display Chairman, Ed Ridge admire one of the many beautiful cases at the show.

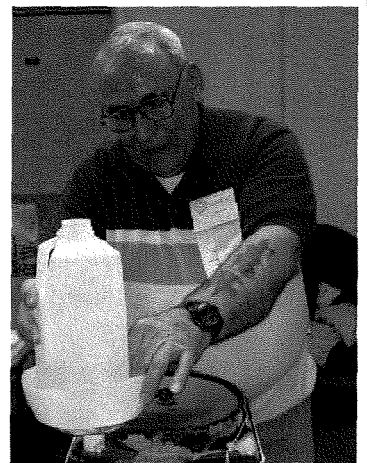
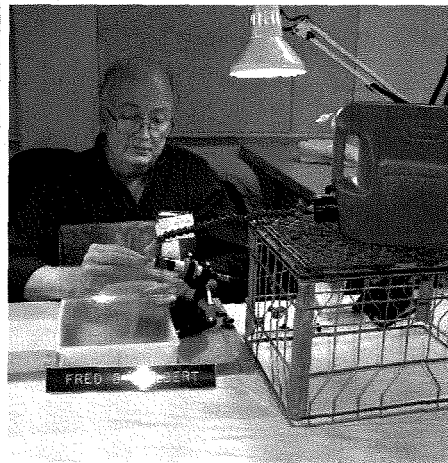


Above: Betty White and Louellen Montgomery host the NAOESCI Silent Auction. Left: Kelly Beers(left) and Allison Baehr became friends during the show. They helped Roger deliver certificates and were rewarded with a magic trick by Captian Agate, himself!



Bill White lends the artist's touch...

More scenes from the 44th Annual Show, March 23-24, 2002



Roger and his lapidary students



The Akins' Wood Pile

Photo by Roger Pabian



An unusually slow moment at the Gem Dig

Photo by Roger Pabian



David Heffelbower and his beautiful opals



Above: Charlene Zweerink and her husband, Charles Left: Susy McMahan and her clan.



Photos by Judy Reilly except as where indicated

2002 SHOW
by Irl Everett

All I can say is "What a show"! The 2002 show was tops. Of course, I have said this about all the Lincoln Gem and Mineral Club shows. In thinking back to the first show when we were a brand new club, I have to say, "we have come along way, Baby"!!

You folks who have not been in the club as long as I have do not know what we were then compared to what we are now. If I remember right, our first show was in the armory, and we had ten dealers. I don't remember how many cases we had. One thing I do remember though, is where I first met Roger Pabian. Now, Rog has changed a little and so have it, but one is thing for sure, we had lots of fun. First, having never done a show before, we did not really know what we were doing. Second, we did not tell anyone we did not know. But our first show was a success and as great as our last one.

Through these years we have learned a lot. Plus, with two national shows under our belts that makes anyone take notice. I might mention here that we put on these two national shows mostly by ourselves. If you want to hear some stories, ask any old timer who helped on one.

In the forty-four years of shows we have had them at several different sites, such as the Armory, the State Fair Grounds and Pershing. Oh, what fun! It is the same every year - plan and plan for weeks. We talk about displays, layouts, set up, teardowns, dealers, cases - on and on. Then in three days it's all over until the next year. But it sure is fun.

As usual, the cases were very nice and the feature displays were excellent. The dealers were first rate, as well. I remember when I could travel all over as a dealer, I was asked two questions by other dealers: Number one would be, what is the best show you do? I would say Lincoln Gem and Mineral Club Show! The second question asked would be, how do you get into it? And I would always have to tell them, I don't know. I have nothing to do with getting dealers.

Little did I know when I founded the Lincoln Gem and Mineral Club that I would see the forty-fourth annual show. In fact, I never thought we would ever even get this far. But it has so much to do with good leadership. As I think back to some of the leaders who have been in charge of seeing the club go on and get to this stage, it overwhelms me at times.

I was so happy and proud when Phyllis called me and asked me to have a display in the 2002 show. I kind of kidded her and told her that I did not have anything, that Lois always showed her talents. So I had my daughter, Janet bring down a case in honor of Lois and we chose the "Pictures on Stone" to show. I know you who knew Lois remember she had a love and talent for cutting and polishing stone.

It was such a joy to meet club members - both old and new. It was also good to stop and chat with dealers I knew. Of course, we all had rock dealer stories to tell each other. Hey!! Some of them are true!

What always amazes me, and it happened at this show, was the club cases and displays. We have the best of the best when it comes to club cases and feature displays. Also there are the extra things like the auction, kids' booth, and other demonstrations that go on throughout the show. Besides there is always new stuff and old stuff that dealers bring to sell. I ask, "Where are they still getting old stuff and new stuff? I thought I had it all and sold it when I was selling!"

I have to stop. When I started typing, I had two good fingers, and now I have two sore fingers. But in closing, I want to say thanks to all who helped with the show. You made my old heart miss a beat when I got there and saw it all once again.

Rockspectfully,
"Evey"

Here is a story from "Evey" ...

This happened right at the 44th annual gem and mineral club show. I was by the case which my daughter had made, displaying Lois's picture rocks. I walked a few cases to the right of mine and saw a case with dyed eggs. (Susy's) A lady came along and looked in the case and said, "My, those are beautiful colored eggs," and I said, "Yes, they are," then she said, "How do they dye them like that?" and I said "Just like regular Easter eggs." The lady looked at me and asked, "Are they hard boiled before they dye them?" "Oh yes!" I told her, "I know (Susy) who owns this case and I see her over by the kids booth. Just go over and ask her. I know she will tell you what I have said is true!!" (HA)

Oh, by the way, Susy, did she ever come by and ask you?

Of Labels and Libraries

One of the fairly important parts of maintaining a collection of any kind is to maintain labels, especially on things that are not self explanatory, such as rocks, minerals, or fossils. A coin may bear a country of origin, a date and a mint mark and it does not require the same degree of labeling as does a crystal or agate. To the experienced collector, a crystal or agate practically has a country of origin, a time of origin and a mint mark (place of origin, sometimes to the exact bed and about 40 feet from where it was found). None of these things are stamped on the mineral or agate and the non-collector is at a loss when viewing the objects. It may also be that the auctioneer who is selling the estate may be at a loss too, so the specimens are just called rocks in the sale bill. Rocks probably won't attract many potential buyers. On the other hand Cornwall Calcite; Mapimi, Durango, Mexico; or Michipicoten Island will grab the serious collector's attention immediately. So you have some economic incentive to keep your collection well labeled.

There is also some scientific incentive. Rocks, minerals or fossils without labels are useless for research. Probably no museum or geology department will want anything that has no documentation. They may accept those Cornwall Calcites for study specimens at 40 cents a pound but you will not be able to get any great declared value for Internal Revenue Service. So you have both some scientific and economic incentive to provide good labeling.

Good labels should have numbers that correlate with specimens that have the number painted on them in an inconspicuous site.

We are all told about what information a label should convey. One can find all of this in the AFMS Uniform Rules. There's a lot the uniform rules don't tell about label. The goal of the label in the rules

is strictly to tell a judge the name of the Judy Reilly Page 1 04/14/2002 mineral, place of origin and chemical makeup. There are even a number of computer programs that will help the collector make up a very attractive set of labels for a case in competition or not.

Some of the things about labels that one does not find in the rule book can help the collector maintain the history and the credibility of any specimen. Some thoughts follow:

Never destroy an old label. The label is as much a part of the specimen as the specimen is itself. The original label may show such data as who collected the specimen, where it was collected, and when it was collected.

You can make new labels to accompany the specimen in displays---you don't need to display the old label, but you do need to keep it.

Some years back I purchased some minerals from a garage sale. The labels were from the Lawrence Prince Company, a dealer firm that hasn't existed for around 70 years. The label itself conveyed a great deal of data about the path the specimen had followed to the place I found it in the sale.

Several years ago, a very famous coin collection was broken up and many of the specimens were offered as being from that famous collection. Many people who purchased lots from this sale were keenly disappointed to find that the original labels (proof that the coin actually came from that collection) had been destroyed and they had been replaced with pretty, computer generated labels stating they were from the famous collection. They coins in question probably were as described but the proof was no longer with the coins.

A "comment card" is a useful little device that supplements a label in a

collection. Perhaps you want to maintain the history of the specimen without damaging or altering the original label(s) that came with it. The comment card may show facts such as secondary origin of the specimen (dealer or collector from whom it was obtained) and the conditions under which it was obtained (cash purchase, trade, etc.) The comment card may also contain secondary data such notes about the crystal form, color, etc. Like the label, the comment card should be numbered.

A really historic specimen might have a label that shows it was first offered by Peter Zodac and was collected by Paul Seel at Frutiville, Pennsylvania, in 1931. Keep those labels and cards for the historic treasures they offer.

Enough for labels. Let's take a trip to the library---the most underutilized resource in every field of endeavor. Many people think that they have done a good literary search by looking at sources on the internet. No! No way! Most of the internet sources only list the most current or most popular publications or research papers on any subject.

A "fugitive reference" is one that does not appear in a leading journal or is not commonly cited. Many of the fugitive references have some of the most accurate and detailed descriptions and most interesting interpretations of geologic sites.

Some of the most interesting papers I have found on agates have been in rarely read journals such as the Transactions of the Nova Scotia Academy of Sciences. Many of these papers are old and many have the original descriptions of fossils, minerals, geologic structures etc. The original description of especially fossils is the description that has priority over all others.

A lot of the really interesting papers are found in publications that still have the old Dewey Decimal catalogue numbers.

The famous magician T. Nelson Downs stated that the best kept secrets in magic are in the literature. The same is true of geology, mineralogy, paleontology, or many of the other sciences.

What if the library doesn't have the journal you want? Go to interlibrary loan. The interlibrary loan service can get you almost any publication you desire. It may take a few weeks or months but you can get it, usually for free or a very small copying.

It took me nearly two years to find Cameron's 1901 original description of the agate occurrences in Queensland but it was worth the wait.

Don't forget to read the list of references or bibliography at the end of any paper. There is a wealth of other sources that the author cited and these can be looked at to test the conclusions of the author.

I hope these ramblings have given you a few ideas about maintaining the historic, scientific and economic integrity of your collections.

Keep the old labels. They have a lot to say.

Read the old literature. There are things in there that are absolutely amazing about both the geology and the geologists.

Roger K. Pabian

Editor's note: There is great online source that specializes in rare, used and out-of-print books. The site is bibliofind.com. I understand it is has combined with amazon.com, another great on-line resource to find books. I learned about these websites from, who else, but my librarian!

Adventures by Grant

The LGMC 44th Annual Show was held March 23-24, 2002. What a show to see! The show chairman was Roger Pabian. He headed the Show Committee who were: John Harrison, Ed Ridge, Susy McMahan, Bill & Betty White, Phil & Patty Rose, Phyllis Parks, Vera Lyman, Judy Reilly, Jim & Sharon Marburger, Pat Atkins, Kay Jurgens, Shirley & Bill Rockel, and Grant Bennett. But these were just a few of the people that started the ball rolling to produce this show.

This year we had a good turnout for helpers. Some of the people that helped set up were Paul Brauch, Nathan Christensen, Susy, Ed, Bill Rockel, Aulden Stewart and Grant Bennett. They did a great job and the blue and gold table coverings looked terrific. Many members helped at the ticket table with Vera Lyman and Jim Atkins. The youth group, guided by Kay Jurgens and assisted by Bill & Shirley Rockel, was a real asset to the show. Members participated in many ways. Many helped tear down as well. I'm sorry if I left anyone out but everyone's help was appreciated in a big way.

There were twelve demonstrators who showed our guests how to cut stones, do beadwork, silversmithing and wire wrapping, clean fossils, and do flint knapping (make arrow heads.)

A fantastic display of Intarsias by Walt Heinz and Jim Kemme was displayed by Jim & Cindy Kemme. Morgan Norris of Blackwell, OK displayed his beautiful carvings and showed our guests how he made the carvings. Bill White displayed a large case showing some of the most beautiful cabochons I have ever seen him cut.

There were three programs on Saturday and two on Sunday. All were very interesting and informative.

The Dealer's Breakfast was held Sunday at the Old Country Buffet. Thirty-six people attended.

As this was the State Show, the NADESCI meeting was held. Seventeen delegates and officers attended the meeting on Saturday. New officers were elected and a lot was discussed and settled. One decision that was made was to raise the cost of the Gem Palette from \$3-\$5.00. You will be receiving a complete report of the meeting in the upcoming Gem Palette.

One of our guests didn't know why we would charge to see a bunch of rocks. He was then invited to see what the show offered. On his way out, he stopped at the front table and apologized. His group was completely amazed by what they had seen. They stated that they will be back at our next show. Thanks to Vera Lyman for this information. She also told me that we had 821 guests on Saturday and 693 on Sunday. Really, not bad!

Roger & I wish to thank each and every one of you for participating in the success of another great show. And for those who did not have a chance to participate, there is always next year!

See you down the road at a future show!

Grant D. Bennett, 1st Vice President

Field trips

Get ready to talk about field trips at the next meeting. One possibility is a visit to a mozarkite mine in Missouri the first week in May. Limestone Day in Weeping Water, June 29, 2002 is another possibility. Wouldn't it be fun for a group of us to go out there for a day? Also, Roger brought up the idea of a trip to Sheffler's in Alexandria, MO, sometime this fall to dig for geodes. There are so many possibilities and with the weather getting so nice, it will be fun to get out and explore!

FEDERATION NEWS

Public Relations

from Barbara Fenstermacher, AFMS Public Relations

Don Shurtz of the Pleasant Oaks Gem and Mineral Club of Dallas, Texas has voted to sponsor a special award at this year's Regional Science and Engineering fair. Here's the story. What a wonderful way to interest kids in our hobby.

Special Award at the Dallas Regional Science and Engineering Fair

Our chapter reads, in part, the club "is organized for charitable and educational purposes to promote interest in the various earth sciences..." To this end, the Pleasant Oaks Gem and Mineral Club of Dallas has elected to sponsor a special award at this year's Dallas Morning News -Toyota Regional Science and Engineering Fair. The competitors at the Science and Engineering Fair are students in grade 7-12 from the Dallas area who have an abiding interest in scientific subjects. At this year's fair, our club will recognize the student who has the best project (considering the student's grade level) in the earth science area. The special award will be a rock tumbler, with rocks and grinding/polishing materials, and a one-year family membership in our club. We will also award honorable mentions to deserving competitors with a one-year family membership in the club. Our club will provide volunteer judges to evaluate the projects and to determine who will be the awards recipients. The winner will receive the award at the Science and Engineering Fair awards banquet, and we hope to have the winner show his or her project at one of our future meetings.

from the AFMS Newsletter, March, 2002

Meriwether Lewis' Near fatal Rockhound Experience

From Brenda Hankins, AFMS Lewis & Clark Chairperson

The summer of 1804 found the Lewis and Clark Expedition traveling west against the current of the Missouri River. At present day, Kansas City, in the great River bend, the Corps of Discovery turned north towards the Mandan Villages. What lay ahead came to be described as a passage through the Garden of Eden and a summer filled with incredible experiences.

Lewis saw and described the coyote which was new to science. He found an area of the River that was 70 yards wide and three miles long that was completely with white feathers, deposited by a flock of birds preening on a sand bar up the river. Private Joseph Fields killed the Expedition's first buffalo, whose hump became the favored food second only to the beaver's tail.

On the Fourth of July, the men of the Expedition became the first Americans to celebrate the nations' birthday west of the Mississippi River. The day started with the firing of the cannon and ended with the enjoyment of a second dram of whiskey. In honor of the nations 18th birthday, Lewis and Clark named a creek "Independence." Today, in present day Atchinson, Kansas, you can stand in the bedroom where Amelia Earhart was born and look out the second story window into the Missouri River and almost see the National Park marker commemorating the Expedition's 1804 Fourth of July Celebration.

(continued on page 10)

(Lewis, continued from page 9)

Another incredible experience that summer almost ended the Lewis & Clark Expedition as we know it. The Expedition came close to using it's primary namesake and it's only distinguished rockhound. Meriwether Lewis almost met his demise in a situation that continues to haunt some modern day rockhounds.

Lewis was known to be more knowledgeable in botany than in mineralogy, but he took all his responsibilities seriously,. On August 22, about 650 miles up the Missouri River, past the mouth of the Platte River, Lewis found and studied a substance that he believed to be arsenic or cobalt. According to Clark's journal, Lewis attempted to taste and smell the specimen so that he could conclusively record what it was. Lewis was immediately overcome by the substance and was nearly poisoned. To ease his condition, Lewis took some of Rush's Pills, often called "thunder bolts" because of their impact on the bowels! Without a doubt, the pills were not the appropriate treatment strategy and only added to Lewis's misery. Fortunately, however, Lewis survived his near fatal rockhound experience.

Reference: Ambrose, Stephen.. Undaunted Courage: Meriwether Lewis, Thomas Jefferson, and the Opening of the American West., 1997. New York: Touchtone.

2002 Show Displays Committee Report
by Ed Ridge

We had fewer displays than last year, about 88, but what we had were good. There were 21 special displays, including three club, two dealers, the State Case, and 15 featured exhibits. Seven were demonstrators. The remaining 60 were displays by members, (including three first-time exhibits and three junior cases,) one member from another club, one former member, six dealers and one special lifetime member. Thanks to all for making this such a good show. For myself, this was my 20th year of putting up displays for the club show.

SOME EVENTS TO CONSIDER...

-May 3-4 McPherson Gem & Mineral Club Rock Swap, 4-H Fairgrounds, McPherson, KS.

-May 4-5 Norfolk Annual Show, Sunset Plaza, Norfolk, NE. contact Harlan Hult, hmhult@bloomnet.com

-May 10-11 Hutchinson Gem and Mineral Club Show, Highway 96, Hutchinson, KS.

-May 18-19 ROCK SWAP, Sponsored by the Sac & Fox Lapidary club, Jefferson County Fairgrounds, US Highway 34 at west edge of city, Fairfield, Iowa, contact Dennis Kossow (641) 472-5874 or billrath@kdsi.net

- September 7-9 Midwest Federation Show, Rice Lake, WI. sponsored by the Northwest Wisconsin Gem & Mineral Society.

-September 22 Sheffler's GEOJAM, Sheffler's Rock Shop & Geode Mine, Alexandria, MO. Register at 8AM at the shop, or in advance, call 660-754-6443, \$15 per day for 50# geodes. Digging 8-5,. Swap meet from 5-7, geology related materials. Large picnic buffet 7:30PM til all gone!

-October 20-21 DesMoines Lapidary Society-Show, DesMoines Botanical Center , 909 East River Drive, DesMoines, IA.



Kay Jurgens and her family are mourning of loss of Kay's infant niece, Alexis Grace Crockett. Alexis lived only seven short weeks but during that time she blessed many lives. Our thoughts and prayers are with Kay and her family.

LINCOLN GEM & MINERAL CLUB, INC. - General Meeting -

There was no General Meeting in March because our Annual Show was held on the 4th weekend.

LINCOLN GEM & MINERAL CLUB, INC. - BOARD OF DIRECTORS -

March 6, 2002 7:00 P.M. @ Kinko's, Conference Room. - 48th & Vine.

Visitors at the Meeting were Ed Ridge and Judy Reilly.

Minutes of the February Meeting were approved with motion by Grant Bennett, 2nd by Dave Heffelbower. Carried.

Treasurer's report was approved with motion by Vera Lyman, 2nd by Grant Bennett. Carried.

Motion to approve and pay bills made by Vera Lyman, 2nd by Grant Bennett. Carried.

NEW BUSINESS:

MEMBERS - Dick Caster - approval for reinstatement by Vera Lyman, 2nd by Grant Bennett. Carried. NEW - Dave & Gail Dobesh - Motion for approval by Susan McMahan, 2nd by Dave Heffelbower. Carried.

General Information Form has been updated and ready for hand-out at Show.

COMMITTEE REPORTS:

SHOW - Chairman Roger Pabian will be doing a promo for the Show at Noon on March 20, on Channel 10/11.

HISTORIAN - Susy McMahan has purchased stacking plastic filing cabinets for storage. SCHOLARSHIP - Motion by Grant Bennett, 2nd by Phyllis Parks, to donate Club balance at UNL Foundation to Geosciences Dept. Motion carried. Secretary sent letter to Foundation and Geosciences Dept. advising of same. (Amount = \$ 175.00)

FIELD TRIP - Planning trip to coincide with "Limestone Day" at Weeping Water on June 29, 2002. Details later.

NAOESCI Meeting 3/23 - Secretary sent letter to Pres. Ben Vrana requesting names of Delegates of other State Clubs.

MEETINGS: Next Board Meeting April 3, 2002, 7:00 P.M. @ Kinko's. General Meeting - November 21, 2002 (Thursday)

@ NE Center. Christmas Party/Meeting December 8, 5-9 P.M. at Antelope Shelter

PICK & SHOVEL DEADLINE APRIL 3, 2002.

Respectfully Submitted,

Vera Lyman, Secretary

FINAL SHOW NOTE:

John Harrison extends thanks and appreciation to all for loading and unloading their vehicles in an organized, efficient manner before and after the show. Everything went smoothly, even when dealing with the rain & snow on Sunday.

HAPPY
SPRING!



Since the insert has an extra page this month, I thought the club members might enjoy seeing some of the sights from the KC Show. For those who have never been to a show in KC, don't miss it next year.

IT WAS GREAT!!!

