

CALENDAR

- February Sunday, February 18, 2002, 1-4 PM, Geology Day at Pioneers Park
 Thursday, February 28, 2002 MEETING at NE Center for Continuing Education, Beatrice Room 33rd & Holdredge Sts. 7:30-9 PM
PROGRAM: Dopping Stones: how to make your stones stick to the stick and how to unstick the stones. When to dop. Ideal size and shape for the stick. Kinds of waxes and dopping with other than wax. Conventional and unconventional methods and equipment to help you In this aspect of lapidary.
PRESENTER: Roger Pabian
FEATURED ROCK TO DISPLAY: Lapidary material
- March March 8,9,10 Kansas City,MO., Association of Earth Science Clubs
 SHOW-Ambassador Drive and NW Plaza Circle
 Friday, March 22, Set up for the LGMC Show at Pershing Auditorium
 Saturday/Sunday, 23rd and 24th LGMC SHOW "BLAST FROM THE PAST" combined with the 2002 NE. STATE SHOW
- April Thursday, April 25 Club Meeting at Gere Library 56th and Normal, 7-9PM
- May Thursday, May 23rd at Antelope Park Shelter near 31st and Sumner, 7-9PM

2002 REGIONAL SHOW SCHEDULE

<p>EASTERN FEDERATION April 27-28,2002 Franklin, NJ</p>	<p>ROCKY MOUNTAIN FEDERATION April 19-21,2002 Enid, Oklahoma</p>	
<p>CALIFORNIA FEDERATION July 12-14,2002 PLACERVILLE,CA</p>	<p>NORTHWEST FEDERATION/AFMS July 18-21,2002 Port Townsend, Washington</p>	<p>MIDWEST FEDERATION OCTOBER 5-6,2002 SPRINGFIELD, ILLINOIS</p>
<p>SOUTHEAST FEDERATION OCTOBER 5-6, 2002 JACKSONVILLE, FLORIDA</p>		

DEADLINE E-X-T-E-N-D-E-D FOR DUES!

Since Phyllis was not at the January Evening meeting, she is asking that the deadline for members to pay their 2002 dues be extended to February 28th without penalty. Please mail your dues and Gem Palette subscription to our post office box or bring them to the February meeting. No later than that if you wish to be included in the Who's Who. Please remember to notify Phyllis of any changes in your address from 2001 and include your e-mail address if you wish to have it published. A red X on your label means that this will be your last Pick & Shovel.

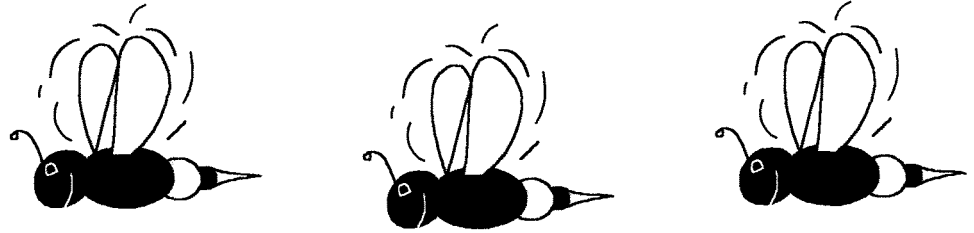
YOUTH NOTES
by Kay Jurgens

RED ALERT!

Juniors, the time to plan our event of the year has arrived. We have a reputation to uphold- having a great junior booth at the annual show. I'm calling on all junior members and on our "graduated" junior members who are now 16 or older, but still a junior at heart, to help at the show. Goodness, we all love doing it anyway, and it wouldn't be possible without everyone pitching in. Come to the February meeting loaded with ideas to make "Blast from the Past" a great theme for the Junior booth. If you aren't able to make it to the meeting, call Kay at 786-2756 or E-mail her at Ruby51@aol.com. **Your** ideas are the ones we want to use! I also need some help filling the Junior Column. We'd LOVE to read something written by a junior in this space.



WHAT'S THE BUZZ?



FROM THE EDITOR:

I was happy to be asked to try my turn as editor of the PICK & SHOVEL. I hope you will all be patient with me as I get up to speed with deadlines, etc. A BIG THANK YOU goes to Phyllis and Jim Parks for all their help. If this issue gets to you on time, it will be because of THEM.

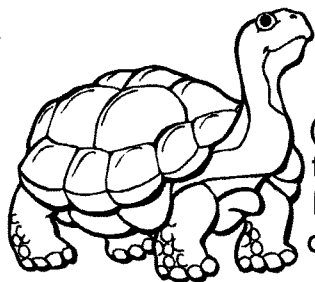
"WHAT'S THE BUZZ?" will be a monthly column which I hope to fill with personal interest items about ALL OF US, the club members. I will be depending on ALL OF YOU to report any special events, illnesses, accomplishments, etc. to me so that we can get the news to the rest of the group. Phyllis told me that the newsletter is the pulse of the club. If this is true, the members together are the HEART which keeps the pulse strong. Prayers go out to Jim Parks who is still having his troubles. Phyllis is taking good care of him, though.

Bill Rockel celebrated his 80th birthday, January 9. Congratulations, Bill! We will be waiting to hear about Pat Akin's trip to Arizona! Spring will be here soon and we can all get out and do some exploring and digging. Don't forget to write up your adventures to share in the PICK & SHOVEL!

JUDY E-mail articles to jshannonreilly@aol.com or call 421-3064.

*Thank you from the Salvation Army
The LGMC received a nice thank you letter from the Salvation Army, dated 1/15/02, thanking us for the \$500 donation. The letter said, in part, "Your gift was an answer to my prayers as scores of needy people come to us for urgent help during the Christmas season and year round. You have pushed us closer to our goal to raise \$300,000 for the Tree of Lights Campaign...You have demonstrated the true spirit of Christmas by helping bring happiness to the hearts of the needy in our community."*

MESSAGE FROM THE PRESIDENT



While the weather outside is cold, warmer weather will be upon us (again) soon. Before we know it, we'll be able to spend time outside doing the things we enjoy. Geology Day (Sunday, February 17, 1-4) at Pioneer Park may be just one of those days. So pitch in and show off your wares, or just stop by with a non-member to introduce them to gems & minerals.

Our meeting this month will be at Nebraska Center Beatrice Room, but on Thursday, February 28, instead of Saturday.

Thanks to Roger Pabian for hosting and all club members who helped out and attended the Rock Swap. We had a steady stream of guests all day, and were able to raise some money for the Club.

Our Annual show is March 23 & 24 at Pershing Auditorium. For a good workout and a way to meet dealers, put in now for a day of vacation on Friday the 22nd and come help set up tables and show cases. We start at 9 am, and you can show up at Pershing and give a hand. Help is also needed to transport equipment from our storage unit to Pershing. Free donuts, coffee and a preview of what is to come. Ask any board member if you have any questions about assignments.

See you at Geology Day and the February meeting....

Susy

INNER BEAUTY

Inner Beauty was not only the theme of last year's show, it was also the subject of a recent sermon at Christ Luthern Church. A member of the church contacted Phyllis Parks to ask if she had a large geode that could be used as an example of beauty that can be found within something rough and plain on the outside. Phyllis provided a beautiful geode with a large calcite for their service. She was thrilled to learn that upon opening the geode, the pastor received "lots of oohs and ahs" from the congregation. This is a good example of how we can share our hobby with the community!

SHOW NOTES

February will be our last general meeting before the show. You should all be planning on what you will display, where you might show your lapidary skills or mineralogical knowledge, or where you might be able to work before, during and after the show. Every display that we can get is needed. Even if you are only a novice, your display can make a connection with the crowd. One might see some fancy carvings and feel they are out of his or her league. The same person may see some beginning lapidary work and say: "Gee, I think I could do that." The connection is made. That same person might take the time to ask how long it took to learn the beginning cuts. You say: "I've been doing it for six months." The reply may be: "How do I get started." These same questions will not be addressed to the highly advanced lapidary by the interested but non-experienced potential collector. So, you see, everybody has a part in the show. The show is not just about the superstars. The show is about you! Let's all participate and put on our best effort for our visitors, exhibitors, demonstrators, and dealers.

Break a leg.

Roger K. Pabian,
Chairman



Some early collectors in Nebraska

By Roger K. Pabian

We will likely never know the names of the first people who collected minerals and gemstones from Nebraska. Plains Indians undoubtedly picked up pieces of flint from the Pennsylvanian and Permian limestone of southeastern Nebraska or pieces of the silicified chalk from the Niobrara formation of Cretaceous age that is exposed in north-central and south-central Nebraska. These rocks were useful for making objects of both utilitarian and ritual significance. An analysis or interpretation of these objects would require someone well versed in pre-history and anthropology and I will delve no more into these areas.

Scientific collecting of mineral specimens goes back at least as early as 1852 when T. A. Conrad described fossil shells from Nebraska in the Proceedings of the Academy of Natural Sciences of Philadelphia. In 1858, B. F. Shumard of St. Louis appended descriptions of several mollusk fossils (clams and ammonites) from the Cretaceous strata that is exposed along the Republican River in south-central Nebraska to Lt. Engelmann's report on the geology from Fort Leavenworth, Kansas, to Bryan's Pass, Nebraska Territory.

In the late 1800's and early 1900's, numerous scientific expeditions from universities in Europe and the eastern United States collected many of Nebraska's vertebrate fossils. F. B. Meek and F. V. Worthen were among the mid-westerners that collected and described many late Paleozoic invertebrate fossils from Nebraska in the late 1860's and early 1870's. H. B. Geinitz of the Leopoldino-Karolinische University in Germany collected and

described a number of late Paleozoic invertebrate fossils from Nebraska at about the same time. In the same time frame, David Dale Owens recorded many vertebrate fossils from Nebraska.

Toward the end of the 19th Century and the early part of the 20th Century, E. H. Barbour served as director of the Nebraska Geological Survey and the University of Nebraska State Museum. Barbour's field parties found and retained in Nebraska, many of the vertebrate fossils from rocks of Tertiary and Quaternary ages for which Nebraska has become world famous.

The 20th Century has been filled with many professionals and academics that developed outstanding careers that were based on collections that were made in Nebraska. These cases are all well documented. We need not say more about professional collecting activity in Nebraska but to say that they established the basic framework geology of the state. I want to cover the activities of the amateurs or the recreational collectors who worked in some cases alongside the early professionals or who followed shortly thereafter.

E. H. Barbour cultivated many close relationships with amateur collectors throughout the state and country. Barbour collected chalcedony gemstones from Nebraska that are now in the collections of the University of Nebraska State Museum (UNSM). Barbour's gem material includes an ironwood cabochon cut from rough found in the Dakota Formation of Cretaceous age in Jefferson County dated 1917. There is also a cabochon of very fine-grained Sioux Quartzite that Barbour found nine miles north of Lincoln on 14th Street dated 1918. Barbour's collections also include a Fairburn agate cabochon from material

collected at the famous Sugar Loaf site. Perhaps the finest stone in Barbour's material is an onyx agate cabochon that was cut from rough that he collected in 1896. Golden State Gem Company of San Francisco cut the stone. Golden State Gem Company was operated by J. A. Kinrade for whom the gem silica Kinradite is named. Emmett Dalton of Dalton Gang notoriety became an active lapidary and rock collector in San Francisco and may have cut some of the materials that Barbour collected.

Father Dennis Fitzgerald, a Catholic Priest at Red Cloud, described a number of gems from the gravel deposits along the Republican River in Webster, Nuckolls and Franklin counties. These stones are well documented in the Collections of the Nebraska State Historical society, v. 17, p. 209-217. Fr. Fitzgerald sold many of his stones to Tiffany & Company in New York. That the bills of sale list them as chalcedony and agate testifies to the quality of the material Fitzgerald found. A number of letters dated around 1910 from H. M. Brown of Upland, Nebraska, to Fr. Fitzgerald show that the priest was not alone in pursuing colorful gems from Nebraska. During his years in Red Cloud, Father Fitzgerald cultivated the friendship and interest of geology in a young boy who was growing up in Red Cloud. That young boy was C. Bertrand Schultz who later gained fame in vertebrate paleontology and became director of the University of Nebraska State Museum.

P. Matthews of Princeton, Nebraska provided some cabochons of agatized wood to the UNSM that was found in glacial deposits near Princeton, about 17 miles south of Lincoln around 1917 or 1918.

C. W. Kaley of Red Willow, Nebraska, near McCook, found some exceptional examples of agatized wood in the Republican River gravel and some fine cabochons from his stones are in the collections at UNSM.

F. D. Norris of Fairbury donated cabochons of fine agatized wood cabochons from rough found in Jefferson County. State Historical Society documents verify the existence of extensive wood deposits in the area but the deposits are now depleted. An occasional piece of fine agatized wood from the Greenhorn Limestone of Cretaceous age still turns up in that area but the large deposits are now exhausted.

Former Governor and Mrs. Sam McKelvie were also important collectors in the 1920's. McKelvie served as Governor from 1919 through 1923 and many of the McKelvie's finds came to the UNSM during that time. Mrs. McKelvie collected many gem materials from Nebraska and several cabochons from the silicified chalk of the Niobrara Formation of Cretaceous age are in the UNSM collections. Governor McKelvie collected many invertebrate fossils from the Pierre Shale of Cretaceous age and many of the ammonites and bivalves in the invertebrate paleontological collections at the UNSM record him as collector.

C. S. Krebs and C. S. Butler of Crete donated to the UNSM a cabochon of fine green moss agate from rough found in gravel of the Big Blue River.

There are probably many more people who made important collections of minerals, gems and fossils from Nebraska. Those listed above are some of the key players. I'll be posting images of some of their stones on my websites in the near future. +++

**Silent Auction: held by the Lincoln Gem & Mineral Club
Attention all Members!!!**

With our Annual Show starting in a few weeks we should all be thinking of what we are going to do to help our club and the Nebraska Association of Earth Science Clubs, Inc. (NAOESCI)

We will be holding a Silent Auction on Mar. 23th-24th, at the show. All the proceeds will be donated to them at the end of the show.

I believe everybody likes a good silent auction; it gives you a chance to get a good deal on some rock material. It really helps you to collect some nice specimens, that you may not have in your area. Or maybe you can't go on field trips any longer, due to health or just age. It is a wonderful place for the junior rockhounds to add to their rock collections.

All of us members have a few nice specimens or slabs, that we can donate to the show auction. It takes a lot of material to put on the table and keep the auction going. Sometimes it gets real fun trying to get your choice piece. There is a lot of scurrying around to get your prize before the time is up. Real Fun can be had. It is also a nice introduction to our paying customer to be able to get nice rocks and have fun trying. It also gives you a chance to talk and meet people.

If you start now and put a few items in a box, you will be surprised at what nice stuff, you can donate to our club. It can be rough rock, or jewelry, fossils, slabs, used equipment, books. anything in our rock hobby. If you are like us, we have more un-used rock around and it really needs to find a good home.

BUT REMEMBER YOUR JUNK MAY BE SOMEONE ELSE'S TREASURE !

Silent Auction, Chr.

Betty White

SWAP 2002

By Grant Bennett

Here it is, LGMC's 24th year swap! It was held at our favorite spot; NE Center for Continuing Education from 1-5 PM Jan. 26. We were fortunate to have two tables manned by people from the Omaha Club and seven that were set up by the Lincoln Club members. A lot of good material was put up for swapping. The silent auction was kept busy. The club cashiers were kept busy exchanging cash for swapper dollars. All in all it turned out to be a good afternoon.

AT 5pm the tables were cleared and all material packed away by the dealers.

Bill Rockel did his usual good deed. He reserved a place at Valentino's for club members interested in an evening meal. The dinner was well attended.

Back to the center for a general membership meeting. Four guests were present and filled out membership forms.

Ed Ridge asked the members present for a count of who needed cases for the 24th annual show which is March 24th.

Roger Pabian gave a very interesting slide show which was enjoyed by all.

Afer the meeting, cake, coffee and tea was served.

See what you missed by not attending the swap and general meeting?

See you down the road at a future show!

FOR SALE!

Highland park 24" saw w/automatic feed/auto shutoff. Enclosed cabinet, comes with 2 blades (\$840.00 new) The 18" blade is new, 20" has approx. 150 hours of cutting left. Asking \$1200 for all, shipping would be around \$100. Leonard Ochs, (707) 964-7309 lochs123@yahoo.com Solid Rock Jade Co.- Jade and other cutting stock available.

LGMC Treasurer's Report for January 2002

Pinnacle Checking Balance on Dec. 31, 2001		\$4,503.13
Receipts Jan.:		
Membership Dues and Registration	\$258.00	
Suspense-Member Gem Palette Subs	28.00	
Suspense-Member Dues Overpaid	2.00	
Silent Auction-For Spec. Lap. Equip. Fund	62.10	
Surcharge on Swapper Bucks-General Fund	183.41	
Suspense For Repayment Outstanding Swapper Bucks	8.00	
2002 Show Income	400.00	
Accounts Receivable-Ads in 2001 Pick&Shovel	45.00	
Suspense Change Fund For Annual Swap	500.00	
Suspense Club Check to Redeem Swapper Bucks	\$ 200.00	<u>\$1686.51</u>

Payments Jan.:

Dues to Affiliates: MW Federation	\$151.00	
NE Association	72.00	
Friends/Museum	<u>70.00</u>	293.00
Donation Toward New NAOESCI Director Per Board	100.00	
Anniversary Cake and Service	21.57	
Copies for Board	3.32	
Rent Meeting Room/ Jan.(Board and Show Comm.)	30.00	
Prepaid Rent/ May and Oct. Meetings	120.00	
Account Payable- Sales Tax 2001	336.90	
December Pick&Shovel Copied (includes ream blue)	84.02	
Postmaster- 34 cent stamps for 3 month P&S	102.00	
Storage for Show Properties First Half 2002	378.00	
Pershing For 2 nd Payment on 2002 Rent	700.00	
Suspense Change from Bank	500.00	
Suspense Check Redeeming Swapper Bucks	<u>\$200.00</u>	<u>\$2868.81</u>

Pinnacle Checking Balance on Jan. 31,2002 **\$3,320.83**

**Lincoln Gem & Mineral Club, Inc.
Suggested Budget for 2002**

ESTIMATED INCOME

Annual Show		\$1,500.00
Interest		2,000.00
Membership Dues		700.00
Miscellaneous Income		200.00
	Total Income	\$4,400.00

ESTIMATED EXPENSES

Dues to affiliated Organizations		
Friends of the State Museum	\$ 70.00	
Midwest Federation	151.00	
NE Association Earth Science Clubs	72.00	\$ 293.00
Meeting Site Rental		800.00
Insurance (Officer's Bond and General Liability)		250.00
Pick&Shovel Publication/Mailing		600.00
Post Office Box Rental and Safety Deposit Rental		90.00
Misc. Postage		100.00
Refreshments		
Anniversary/January Swap	\$ 125.00	
Show Set-Up	275.00	
General Meetings	100.00	500.00
Scholarships		500.00
Awards		100.00
Field Trip Expenses/ First Aid Kits		100.00
Historian		100.00
Librarian (Books, Magazines, Binders, Bookcases)		100.00
Programs		150.00
Misc. Officer & Committee Expense (Sec-\$40, Treas.-\$40, Membership-\$20, Corporation Fee-\$20, Misc.- \$50)		170.00
Christmas Dinner		250.00
TOTAL EXPENSES		\$4,103.00
TENTATIVE GAIN		\$ 297.00

LINCOLN GEM & MINERAL CLUB, INC. 17-., BOARD MEETING - Jan. 2, 2002 7:30 P.M. @ Kinkos, Conference Rm. 48th & Vine

Our new President, Susan McMahan, called the Meeting to order with 5 Board members and 2 visitors; Ed Ridge and Jim Atkins, present.

Minutes of the December Meeting were approved with motion by Grant Bennett; 2nd by Pat Akins. Carried.

December Treasurer's report was approved with motion by Vera Lyman, 2nd by Grant Bennett. Carried.

Bills were presented. Motion for approval by Pat Akins, 2nd by Grant Bennett. Carried.

Vera Lyman made motion to pay dues to Midwest Federation, NAOESCI, and Friends of Museum (the latter to include \$10. each to Ashfall and Fort Robinson.) 2nd-eto motion by Pat Akins. Carried

Thus far, we have 31 paid adult members and 2 youth for 2002. There are 10 subscriptions to Gem Palette.

NO OLD BUSINESS:

NEW BUSINESS:

Since the Club members voted to change General Meetings to Thursday nights, they are scheduled as follows:

Jan. Meeting & Swap SAT. Jan. 26, 1-5 P.M.=SWAP 7:30 Meeting Feb. 28 -

THURSDAY 7:30 P.M.

Mar. - No Meeting (Our annual Show

Apr. - 7:00 P.M. (PROMPTLY) at Gere Library - 56th & Normal May - Antelope Park Shelter Sep. - Gere Library

Oct. - Antelope Park Shelter Nov. & Dec. - ?

The Lincoln Public Schools/Pfizer will again host the 5th & 6th Grade Science Fair at Ag Hall. GMC members are asked and encouraged to participate. This will be Tuesday, Feb 19th at 5:00 P.M.

Geology Day will be at Pioneer Park Nature Center, Sun. 1, @hr. 17 from 1-4 P.M. Any members able to demonstrate and answer questions are asked to help out.

COMMITTEE REPORTS:

Scholarships - Request Chair, Susan Taylor to check on balance at UNL

Foundation - Pat Akins interested in coordinating a trip along Platte and also field trips - to Weeping Water sometime in May.

SHOW - Twelve Dealers have returned contracts. Chair, Roger Pabian scheduling Meeting for Feb 18. Details forth-coming.

Pick & Shovel deadline is February 6th.
February Board Meeting is Feb. 6, at 7:00 P.M. at Kinkos.

Meeting adjourned. Respectfully submitted, Vera Lyman, Secretary

LINCOLN GEM & MINERAL CLUB, INC. - GENERAL MEETING Jan. 26, 2002 7:30 P.M.
Nebraska Center for Continuing Education Scottsbluff & Minden Rms.

24th ANNUAL SWAP - 1:00 - 5:00 P.M.

The Anniversary Meeting was opened with the Pledge of Allegiance.

24 Members and 2 Juniors present, along with 4 guests. They were: Stella Thiessen, Dan & Amy Dexter-Guy, Barb Nicholson (daughter of Paul Brauch).

The Minutes and Treasurer's report were approved as printed with a motion by Grant Bennett; 2nd by Jim Marburger. Carried.

NO OLD OR NEW BUSINESS: The President did announce that this was our 48th Anniversary Meeting. The first meeting held Jan. 15, 1955.

COMMITTEE REPORTS: "SHOW" - Roger Pabian, Chairman

in need of one more dealer, but quite sure of one forth-coming.

There will be at least 12 cases of Special Features, including Rock Carving and Jewelry History. There will also be quite a number of Working Demonstrations, both selling and non-selling. There are at least 5 or 6 interesting programs being scheduled.

Roger then asked Ed Ridge, Display Chairman, to come forward and get 'display footage and case requirements' from each of the members.

On Friday (set-up day) and Sunday (tear-down) a lot of help is needed. (Quote - RP) "Shows become 'Great Shows' with lots of volunteers"!

MEETINGS, etc.:

Feb. Board Meeting - Feb 6, at 7:00 P.M. - Kinkos

Feb. General Meeting - Nebraska Center - 7:30 P.M. THURS. Feb 28 at 7:30 P.M.

March 23-24 - SHOW

April General Meeting - Thur. April 25 PROMPTLY at 7:00 9:00 P.M Gere

Library - 56th & Normal

DUES ARE DUE BY JAN. 31! Pick & Shovel deadline is Feb. 6.

Meeting was followed by an interesting program, presented by Roger, "History and Trivia of Past Rock Collecting". Thanks, Roger for an excellent presentation.

Evening closed with Anniversary Cake and fellowship.

Respectively submitted, Vera Lyman, Secretary

2002 ELECTED OFFICERS

President	Susy McMahan	5636 Greenwood St.	Lincoln, NE 68507	464-0065
1st. Vice Pres.	Grant D. Bennett	721 No. 58th St.	Lincoln, NE 68505	466-5377
2nd Vice Pres.	Pat Akins, Jr.	5017 No. 6th St.	Lincoln, NE 68521	477-1322
Secretary:	Vera Lyman,	420 N. 56th St.	Lincoln, NE 68504	464-6089
Treasurer:	Phyllis Parks,	2435 So. 19th St.	Lincoln, NE 68502	476-6798
Board Member	David Heffelbower,	1819 Washington St.	Lincoln, NE 68502 cell	890-2794
Board Member	James Marburger	330 Locust	Hickman, NE 68372	792-2348

Nominating Committee

3 years	John Harrison Aulden Stewart
2 years	Billie Heffelbower Judy Reilly
1 year	Jim Parks Edward Ridge

Chairman-Immediate Past President James N. Atkins

Long Range Planning & By-Laws Committee

3 years	Susan Taylor Edward Ridge
2 years	Vera M. Lyman Roger K. Pabian
1 year:	Charles Wooldridge Kevin Schwartman

Standing Committees

Education/ Librarian	Roger Pabian	MWF Liaison:	Vera Lyman
Field Trips:	? Coordinator	Scholarship:	
Historian:	Susy McMahan	Christmas Party	Susy McMahan
Hospitality:	?	2002 Show:	Roger K. Pabian
Study Coordinator:?		2003 Show:	John Harrison
Housing/Property:	Jim Parks	2002 Swap:	Roger K. Pabian
Youth Activities:	Kay Jurgens	2003 Swap:	?

Auditing Committee: John Harrison, Roger Pabian, Susan Taylor

L. G. M. C. Web Page Address :

Geology Day Coordinator: 2nd Vice President <http://nesen.unl.edu/lgmc/lgmc.html>

Your PICK & SHOVEL Staff

Publisher:	Lincoln Gem & Mineral Club, Inc., P.O. Box 5342, Lincoln, NE 68505-0342
Editor:	Judy Reilly 421-3064
Assistant	Phyllis N. Parks 476-6798
Business Reporter:	Vera Lyman 464-6089
News Reporters	All Club Members
Circulation:	Jim Parks 476-6798

The *PICK & SHOVEL* is the official publication of the Lincoln Gem & Mineral Club, Lincoln, Nebraska. Articles and items appearing within may be reproduced in other club bulletins, provided proper credit is given to the *PICK & SHOVEL* and the author and that a reprint of the bulletin is sent to the editor of the *PICK & SHOVEL*.

The purpose of this corporation shall be to study, promote an interest in, and disseminate knowledge of lapidary and various Earth Sciences including but not necessarily limited to geology, paleontology and mineralogy. It shall be a particular purpose of the corporation to provide education in these fields to its members and the general public, especially to youth and student groups.

J. J. & L. ROCKS and MINERALS

GEMS - CABS
ROUGH - SLABS - MOUNTINGS
STERLING SILVER - GOLD FILLED - 14K GOLD
SILVER SUPPLIES - TOOLS - MACHINERY - NEW AND USED
CUSTOM SERVICES FOR SLABS, FLAT LAPPING, AND CABOCHONS

STARTING OUR 27th YEAR

330 LOCUST
HICKMAN, NE 68372-0068

PHONE
402-792-2337

*"PROVIDING SUPPLIES FOR THE NOVICE TO THE DISCRIMINATING ROCKHOUND"
Please Call for Appointment*

NEBRASKA STATE SHOW hosted by

LINCOLN GEM & MINERAL CLUB

at our

44th Annual Show

PERSHING MUNICIPAL AUDITORIUM

March 23 - 24, 2002

'A BLAST FROM THE PAST'

Show Chairman - Roger K. Pabian

Read your bulletin for new materials or specials from the above advertisers.

Advertising by rock-hobby business or interest is permitted with the approval of the Board. The rate now set at \$15.00 per full page; \$7.50 per 1/2 page; \$5.00 per 1/3 page; and \$3.75 per 1/4 page(min) per issue, paid in advance. These ads will be placed through the bulletin as space permits.

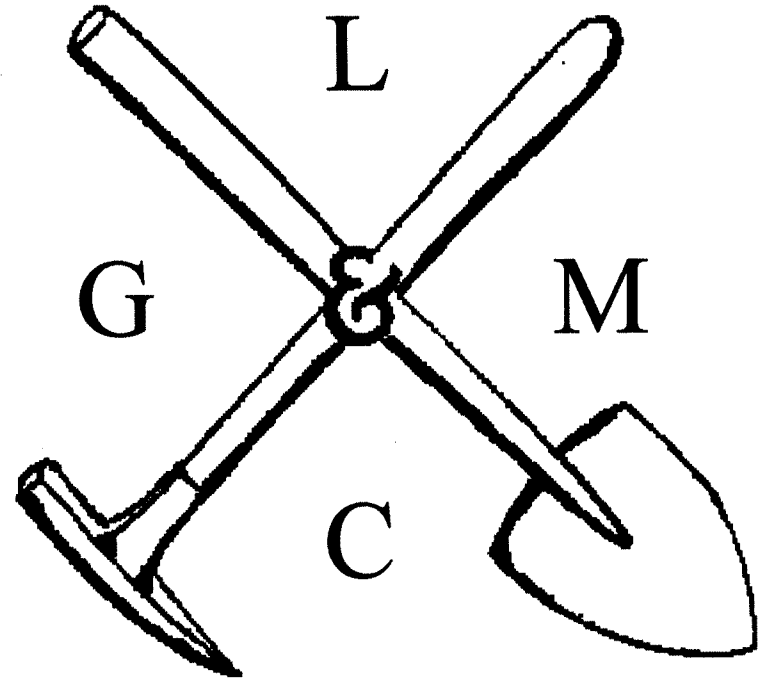
Subscription to the Pick & Shovel is \$10.00 per year mailed.

Dues to Lincoln Gem & Mineral Club are as follows:
Adult(ages 16 and over) \$10.00 per year
Junior(ages 12 to 16) \$ 2.00 per year
Family Membership (Husband,wife,resident children under age 16) \$22.00 per year

New memberships must be approved by the Board, after the applicant attends at least one meeting of the club and pays the above dues plus a \$5.00 registration fee.

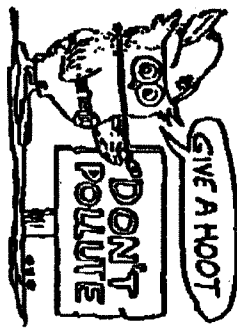
THE PICK & SHOVEL

February 2002



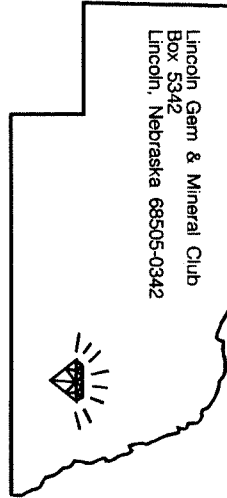
OFFICIAL PUBLICATION OF
LINCOLN GEM & MINERAL CLUB

LINCOLN, NEBRASKA



Mail Exchange Bulletins To:

Lincoln Gem & Mineral Club
Box 5342
Lincoln, Nebraska 68505-0342



H. E. L. P.
Help Eliminate Litter Please



Associated with

Historian