

G A L E N D A R

Meeting: Saturday, January 27, **23rd Annual Indoor Swap**, Nebraska Center Continuing Education, , 33rd & Holdrege Sts., 1 to 5 PM. Chaired by David & Charlene Bingell, and Ariana. Break for supper, reconvene at 7:30 PM for 47th Anniversary Meeting, Cake & Coffee after meeting. **Bring something for the Silent Auctions!!**

Program: “**Rock Collectors -History and Trivia**” presented by **Roger K. Pabian**.

Rock of the Month: Bring Crystal Forms of Gems & Minerals to display.

Youth Come and join us for the swap and a good program in the evening.

Sunday February 18--Geology Day at Pioneer Park-Club participation 1 to 4 PM. Try to be there!

February: Regular meeting, Saturday the 24th, 7:30 PM, Nebraska Center, 33rd & Holdrege.

NEXT LGMC SHOW - MARCH 24-25, 2001, Pershing Auditorium
(Our 43rd Annual Show)
“**Inner Beauty**”

Nearby Shows to Visit

Jan.1-Feb.15 Show Quartzite POW WOW,

Mar.9-11 SHOW Kansas City, MO., Association of Earth Science Clubs,

DUES ARE PAST DUE

LGMC By Laws state that dues are due by January 1st of each year and must be paid before January 31st or they become delinquent and a \$5.00 reinstatement fee will be assessed.. Make your checks payable to Lincoln Gem & Mineral Club, Inc. and send them to P. O. Box 5342, Lincoln, NE 68505. Dues are \$10.00 per adult member, \$2.00 per youth or \$22.00 for a family including all youth under 16 years of age. New memberships only require an additional \$5.00 per family as a registration fee.

We urge you to subscribe to the Nebraska State Association publication ‘The Gem Palette’ at this time to assure yourself of news from other clubs in Nebraska. Please add \$3.25 per family and we will forward names to the NAOESCI Treasurer and the Editor.

2001 REGIONAL SHOW SCHEDULE

EASTERN FEDERATION

July 13-15

Syracuse, New York

CALIFORNIA FEDERATION

June 22-24

Paso Robles, California

AFMS / SOUTH CENTRAL

FEDERATION

June 11-17

Arlington, Texas

NORTHWEST FEDERATION

August 20-September 1

Enumclaw, Washington

SOUTHEAST FEDERATION

September 2-4

Pascagoula, Mississippi

ROCKY MOUNTAIN

FEDERATION

June 8-10

Rosewell, New Mexico

MIDWEST FEDERATION

September 7-9

Rice Lake, Wisconsin

LGMC Christmas Party 2000

Here it is the 10th of December 2000. The snow is blowing and I am on my way to the annual Christmas Party. Really didn't expect a lot of people to show up. But am happy to report that a lot of them did. We had 28 members and 4 guests to attend the festivities.

Started the evening off with the much awaited food, so much of various kinds it was hard to decide where to start. It was so good that some went back for a fourth helping. But I won't tell who it was.

Rock Bingo was planned for the evening entertainment but much to the regret of everyone the one person with the cards did not make it through the snow. The rocks brought to donate as prizes for Rock Bingo, was decided to give to the Silent Auction in January at the Annual Swap on the 27th at Nebraska Center for Continuing Education, 33rd & Holdrege, Lincoln, Nebraska.

It was suggested at the party that each person stand up and tell about how they came to be a rockhound, also anything else of interest. Really very interesting to listen to the tales. Some were very tall. What a good way to become acquainted and learn of the members different interests.

Now for some serious business. The gavel was presented to the incoming President, Jim Atkins. He in turn presented the outgoing President Edward Ridge with a very nice plaque thanking him for two good years of leadership. The incoming officers for the new year are President-Jim N. Atkins, 1st Vice-President-Grant D. Bennett, 2nd Vice-President-Susy McMahan, Secretary-Vera M. Lyman, Treasurer-Phyllis N. Parks, Board Members-David Heffelbower, Brett Jurgens, Charlene Bingell, and James Marburger.

There was a gift exchange for those who brought gifts. Extra Thanks goes to Ed Ridge for placing candles along the walk to the building's front entrance. Also for the beautifully decorated Christmas Tree. Also many Thanks to Susy McMahan for the many table decorations and for the eye catching red table cloths.

What a wonderful way to start the Holidays, among friends. Sorry more of our club members couldn't join in for this special time. But it could be understood because of the bad weather.

Don't forget your dues are due for the year 2001.

On the brighter side, have a Healthy and Happy New Year.

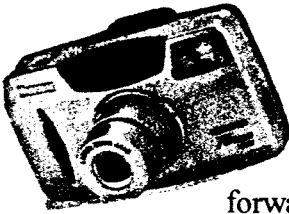
See you all at a Lincoln Gem & Mineral Club meeting.

Grant D. Bennett, 1st Vice President

Editor's Note: Thanks Grant for this complete report of our annual Christmas Meeting. It is the first one I had missed in years and I really missed being there.

.....
From the G I NUGGET:

I was flying from San Francisco to Los Angeles. By the time we took off, there had been a 45 minute delay and everybody on board was ticked. Unexpectedly we stopped in Sacramento on the way. The flight attendant explained there would be another 45 minute delay and if we wanted to get off the aircraft, we would reboard in 30 minutes. Everybody got off the plane except one gentleman who was blind. I noticed him as I walked by and could tell he had flown before because his seeing eye dog lay quietly underneath the seats in front of him throughout the entire flight. I could also tell he had flown this very flight before because the pilot approached and called him by name, said, "We're in Sacramento for almost an hour. Would you like to get off and stretch your legs?" "No thanks, but maybe my dog would like to stretch his legs." Picture this: All the people in the gate area came to a completely quiet standstill when they looked up and saw the pilot walk off the plane with a seeing eye dog! The pilot was even wearing sunglasses. People scattered. They not only tried to change planes they were also trying to change airlines!



President's Column

A Belated Merry Christmas and Happy New Year. I am looking forward to an exciting year. There will be fun times and plenty of events to attend I would like to see participation from all of our members with increased attendance at monthly meetings. Some more new members would be a nice thing to have. It's the old story lack of attendance, lack of interest, and lack of enthusiasm equals lack of club. We have many knowledgeable and talented members whose skills should be shared and not lost.

As I see it we have our "Swap Meet" this month; Geology Day in February; a Science Fair for 5th & 6th Grade Students and our annual Club Show in March; A Scholarship Presentation in April, dessert supper(?) In May; Grinding Party in July. Then a Summer break with maybe a Field Trip? Then in the Fall some interesting programs and silent auctions. Sounds like fun? I think so.

I am interested in new ideas and new ways to do things, feel free to share your thoughts and ideas with me.

See you at the meeting.

Jim Atkins

MIDWEST FEDERATION PRESIDENT'S REPORT - From MWF Newsletter December 2000

The AFMS/RMF Show and Convention was held from October 11-14 in Moab, Utah. Willis Smith and I represented the MWF as directors of AFMS this year. Kathy Miller attended as AFMS Third Regional Vice President. Others included: Marve and Kitty Starbuck; Anne Cook; Bob Miller; Margaret and Bob Heinek; Marge Collins; and Barbara Sky. These people extended themselves and attended meetings and represented the MWF and should be applauded for their hard work and contributions.

While attending the Show and Convention, one point that was repeatedly brought up should be stressed. That is the fact that with the coming year included, the AFMS Scholarship Foundation will have provided a MILLION DOLLARS worth of scholarships over the course of its existence. This point can not be over emphasized. It is sometimes asked what good do we do as an organization? Plenty-and this is a prime example of what a positive impact we can have on others. The scholarships that are granted by the Federation directly aid students who are interested in a geological related field for their occupation. These young men and women will remember where the help came from. We should remember that we can and should do more. We have made a difference.

During the show at Moab, several field trips were available. Willis had flown out from St. Louis and was driving a small rental car. Since I drove out in our Jeep, Willis rode shotgun with me on a couple of trips. We had great guides and wonderful weather. Willis thought I was getting us lost in an area called Yellow Cat Flat, where a number of abandoned uranium mines are located. We didn't get lost, and we got out of there with very fruitful results. Willis was bounding over hills and hollows looking for agate, petrified wood, and dinosaur dung. We had a great time. The simple point I am trying to make is that sharing your rock collecting experience with your club members is what the MWF is all about - great finds, friends and fellowship.

Dear Stone

Lincoln Gem & Mineral Club
Cordially Invites You To Attend
It's
23rd Annual Midwinter



SWAP



Saturday, January 27th, 2001

Scottsbluff-Minden Rooms

Nebraska Center for Continuing Education

33rd & Holdredge Streets

Lincoln NE

1:00 PM - 5:00 PM

**Trade Gemstones, Minerals, Lapidary Equipment,
Rough Gem Material, Faceted Stones, Findings, Fossils, Crystals,
Finished Jewelry, Agates, Everything Related to the Rock Hobby.**

**Free Coffee, Kids' Activities
Silent Auctions**

Swapper Dollars Available at 10% Surcharge

**Lincoln Gem & Mineral Club's 47th Anniversary Meeting will be at
7:30 PM after the SWAP. Visitors are welcome.**

For further information:

**David & Charlene Bingell, Co-Chairs, Ariana Bingell, Junior Chair
(402)-441-1588**

LINCOLN GEM & MINERAL CLUB, INC. - BOARD OF DIRECTORS - Nov. 29, 2000
 (December Meeting)
 7:00 P.M. @ Kinkos - Conference Rm. - 48th & Vine

Six Board members present.

President called the Meeting to order.

Minutes of Oct. Meeting were approved with motion by Phyllis P.,
 2nd by Jim A. Motion carried.

Treasurer's report approved with motion by Vera L., 2nd by Grant B.
 Motion carried.

Bills were presented and motion for approval by Jim A., 2nd by Grant B.
 Motion carried.

Motion for approval by Vera L., 2nd by Dave H. of each of the following;

Membership renewal in - Midwest Federation @ \$2.00 per Club member
 - NE Assoc. of Earth Science @ \$1.00 per mem.

Friends of Museum - \$ 50.00 Ashfall - \$ 10.00

Fort Robinson Museum - \$ 50.00

Storage Facility (payment for first half (2001) - \$ 378.00

3 Extra copies of Gem Palette for Club use

Motion carried, on all items.

Old Business:

Unfinished business regarding request at State Assoc Meeting for
 assistance to defray cost of The Gem Palette.

Motion by Phyllis P. to send extra \$ 1.00 per adult member to help
 defray expenses of Gem Palette. 2nd by Dave H. Motion carried.

Membership: Motion by Phyllis P. to approve membership for:
 David Fields, Philip & Patricia Rose, Stewart Aulden. 2nd by
 Jim A. Motion carried.

Request to place Special Ad in Pick & Shovel for Silversmithing Class
 by Ann Goddard - 1 month only (Dec issue) @ \$ 5.00.

Motion to approve by Phyllis P. 2nd by Dave H. Motion carried.

Pick & Shovel deadline for copy will be Jan. Board Meeting. List of
 new committee appointments as soon as available so "Staff Page"
 can be set up by Editor.

Board Meeting JANUARY 3, 2001 @ 7:00 P.M. - Kinkos Conference Rm.
 48th & Vine.

Respectfully submitted,

Vera Lyman
 Vera Lyman, Secretary

LGMC Treasurer's Report for December 2000

Pinnacle Bank Checking Balance 11/29/ 2000

\$6332.63

Receipts:

Membership Dues 2001	134.00	
Suspense-Member Subs to Gem Palette	13.00	
Overpayment on Dues Check	2.00	
Suspense-Member Name Badge	7.00	
One time ad in December Pick & Shovel	<u>5.00</u>	161.00

Payments:

Nebraska Center-November Meeting	100.00	
Printing December Pick & Shovel	37.60	
City Parks-Key Deposit to be returned	50.00	
Rixstine Trophy-Plaque	59.59	
US Postal Service-Box 5342 at Station C	64.00	
Treas/Editor Expenses P & S & Misc.	45.04	
Christmas Dinner Meats	<u>68.81</u>	<u>425.04</u>

Pinnacle Bank Checking Balance 12/31/2000

\$ 6068.59

Some **CHATTING** and some **ACTION**--Chatting by Phyllis and hopefully **ACTION** by club members--Just when our snow removal was in the news Jim read this one to me and I hope you get as big a charge as I did:

From the San Diego **Pegmatite**: **"SNOWBOUND IN MINNESOTA"**

Ole and Lena were sitting down to their usual cup of morning coffee listening to the weather report coming over the radio. "There will be 3 to 5 inches of snow today and a snow emergency has been declared. You must park your cars on the odd numbered side of the street." Ole got up from his coffee, "Jeez, okay."

Two days later, again both are sitting down with their cups of morning coffee and the weather forecast is "There will be 2 to 4 inches of snow today and a snow emergency has been declared. You must park your cars on the even numbered side of the street." Ole got up from his coffee and says "Jeez, okay."

Three days later, again both are sitting down with their cups of coffee and the weather forecast is, "There will be 6 to 8 inches of snow today and a snow emergency has been declared. You must park your cars on the ..." and then the power went out and Ole didn't get the rest of the instructions. He says to Lena, "Jeez what am I going to do now, Lena?"

Lena replies, "Aw, Ole, just leave the car in the garage."

* * * * *

Now, seriously, I have so many notes in my file that I want to share--First we had a nice note from **Ben Darling**, when he sent dues for his whole family, telling about their rock hunting and his new job with Sidney Jr. High teaching ART. Will have it at the swap for friends to enjoy since space is limited this month. **Adeline Nolde** sent a note to **Vera** to let us know that former member and **Past President Robert Desmond Gibson** is recovering from angioplasty surgery this past summer at his home where he watches for birds and enjoys the tranquility of the wooded area nearby. Again, note with his address at meeting if you would like it.

A letter from the director of **University of Nebraska State Museum** tells of a special group of activities in association with a "First Day Stamp Issue" possibly in Elephant Hall, on April 19th. Watch for more information. This letter came to the club as a member of **Friends of the State Museum** whose annual meeting will be January 26th.

We have an invitation to participate in "**A Rock Odyssey 2001**" in Rice Lake, Wisconsin on September 7-9, 2001 at the Barron County Fairgrounds as part of the 61st Annual Midwest Federation Gem & Mineral Show attendees. (Letter & flyers at Swap.)

How many of you '**web searchers**' out there have seen the new LGMC Page set up by club president **Jim Atkins**? Jim usually had his camera at our various club activities and has put many of his shots to good use at <http://incolor.inetnebr.com/jna/gemclub/lgmc.htm>

Please don't forget to join us at **Pioneer Park** on February 18th, Sunday, from 1 to 4 PM. We really have a fun time with the Park Attendants in the big auditorium looking out over the nature trails and park area. The more the better to enjoy the public's questions and interest.

Now for the big **challenge!** The membership at our November 2000 meeting voted to purchase enough CD Rom of '**Photo Atlas of Minerals**' from The Natural History Museum of Los Angeles County (program introduced by **Eric Fritzsich** at our September club meeting) to place one at each of our Lincoln Public Libraries, including the two new ones in progress. Several members have also decided to order personal copies and at present we can order 14 which will entitle us to a price of \$39.95 plus \$5.00 p & h. If 6 more orders can be promised we would be able to get them at \$29.95 plus p&h. I had suggested closure for Dec. 10th at the Christmas meeting but since I did not make it there and had not done my research on the project I am giving us one more chance. I have talked to the LA County Museum and they are most helpful. I have talked to the person at City Library who we would work with and she is very excited at the prospect of more material regarding the Mineral World. Now I am ready for your action---orders and money in hand **ASAP.Jan.27 deadline.**

Editor/Treasurer Phyllis Parks

...of Karats and Carats

by Roger K. Pabian

The above terms karats and carats are commonly used in the gem and jewelry trade and the use of these terms by rockhounds has become increasingly common in the past several years. Perhaps it would be a good idea to examine the origins of these terms and also how they are being used and misused in the modern day.

Historically, the terms are of very old origins. We can go all the way back to the Byzantine, sometimes called Roman, Empire that began in the late 6th Century C.E. and abruptly ended at the battle of Manzikert in 1453 when the Muslim Turks conquered the then Christian stronghold of Constantinople (now Istanbul) in Turkey.

The mainstay of the Byzantine economy was a gold coin called the *solidus*. The *solidus* was the weight of 24 *keraita* (carob) seeds. Carob is that "chocolate" flavored powder that you can find especially at health food stores. Carob seeds have an unusual property inasmuch as they are of remarkably uniform weight. Some materials that were published in some numismatic (coin collecting) books suggest that weight of 24 carob seeds picked at random only varied by about + or - 0.0005 grams. That is only about 5 ten thousandths of a gram. The weight of an actual *solidus* coin is about 4.5 grams. This is just a tad lower than what 24 carob seeds would actually weigh. That is because the weight of the coin was reduced slightly to cover the costs of its minting. For historical purposes, one carat is about the weight of one carob seed. In reality, one carat is defined as 200 milligrams---that is, 5 carats = 1 gram.

Why do we have the terms karat and carat. The purity of gold is often described in terms of 24 karat (24k), 18k, 14k, etc. What these numbers mean is that if you are dealing with 24k gold, 24 of 24 parts of the metal sample are pure gold. In 18k gold, 18 of 24 parts are pure gold and the other 6 parts are alloy metals such as silver or copper. In 14k, its 14 parts gold per 24 parts, etc. The "K" karat designation is a proportion, not a weight. The purity of modern gold coins is now expressed in fineness, such as .950 fine or 950 parts per thousand are pure gold. However, the older designation still exists and is used in the jewelry industry.

Carat, on the other hand is an actual weight. Somebody can speak of a gemstone as weighing so many carats. This is all well and good but when are sellers of stones abusing the term carat? Let's examine the case of faceted stones? To optimally use the light that passes through a faceted gem, the faceter must use the proper angles for the pavilion (lower part) and crown (upper part) of the stone. The table (the large, flat facet at the top of the stone) must also be a given percentage of the diameter of the stone. Unethical or unknowledgeable faceters may decide that they can add weight to the finished stone by using too steep of a pavilion angle. This will add extra volume (translates to weight) to the stone. The same faceter may also decide that if the table facet is made larger by using a steeper than recommended crown angle, that will also add weight to the stone.

The unsuspecting buyer may come along and purchase the above piece as a 10 carat stone. If the pavilion of the stone is too deep, light entering the table will not be reflected back out of the top of the stone. The stone will "leak light" and the center of the stone will appear dark. When a knowledgeable and ethical appraiser or jeweler sees the above stone, a new question comes to his or her mind? How much would this stone weigh if it had been properly cut to the prescribed crown and pavilion angles with a table of the correct proportions such that it could maximize the light that entered the table? The jeweler or appraiser could then examine the stone to determine what the stone would weigh if it had been properly cut. Suppose the jeweler or appraiser determines the stone would only weigh 6.7 carats if it had been done correctly, that weight is called the "corrected weight". The stone is only worth no more than the corrected weight price, and minus a deduction for recutting the stone to its proper proportions.

The only time that carat weight carries its full meaning is when you are dealing with transparent faceted stones that are of the proper proportions. Proper proportions are going to vary from stone to stone. These were first determined for diamonds but the increase in demand for colored stones has led to proper proportions being important for stones such as ruby or emerald. The proportions will be dictated by the refractive index of the stone---that is how much light is bent and slowed down when its beam passes from air into the body of the stone.

Nothing effects the refractive index except for the packing of the atoms that make up the stone--not the color, the transparency or any other physical property. An opaque ruby will have the same refractive index as a fine transparent one.

Lets examine cabochons, especially assembled stones such as doublets or triplets. I've seen opal triplets with carat weights attached to them. This is absolutely meaningless. The cap of the stone will in all likelihood be quartz, glass or synthetic spinel. The thin sliver of opal will be the only component that has an applicable carat weight. There are two layers of cement of much lower specific gravity than the opal. The back of the triplet may be obsidian that is of a much higher specific gravity than the opal. Then, how does the seller arrive at a carat weight for a triplet? The only real criterion for judging the value of the triplet will be on the size of the stone and the intensity and distribution of color in the thin opal sliver. If the assembled triplet is 30 x 22 mm and has good sized splotches of color and no dead spots in the stone, it has more value than a similar stone with a 8 x 10 mm dead spot on one end of the stone. But carat weight doesn't have a thing to do with it. Because of a thicker cap, the latter stone may weigh five carats more than the former. There are dealers out there pricing these things by carat weight.

One even has to have some reservations about carat weight regarding solid opals. If the stones are if intense color that is evenly distributed throughout the body of the stone, carat weight may have some meaning. If the stone has an excessively high dome to add carat weight, this may really work against the cutter. The cutter may produce a relatively un-saleable 10 carat stone whereas two 4 carat stones may have found a ready market. Even with opal solids, weight should be taken with a bit of caution.

I have seen carat weight applied to agate cabochons and specimens. Carat weight is pretty meaningless here too. Any cutter can put an extra high dome on an agate cabochon to add weight. Any cutter can add excess diameter to a stone to add weight. So the stones look funny---the first one is two inches high and the second one is as large as a dinner plate. These are extreme examples but they make the point.

A combination of unknowing and/or unethical dealers has really abused the meaning

of carat weight. I've even seen advertisements referring to a 2-karat ruby in a 14-carat gold pendant. The unsuspecting consumer can only get a bad experience from the misuse of weights and proportions when unethical or unknowledgeable sellers offer their wares. If one is buying stones, one must learn the cases where carat weight is fully meaningful, where karat really applies and where it isn't.

For further reading

- Pagel-Theisen, V., 1980. *Diamond Grading ABC, handbook of diamond grading*, 7th edition. Rubin & Sons, New York, Antwerp, 275 p.
- Sayles, W. G., 1998. *Ancient Coin collecting V. the Romaion/Byzantine Culture*. Krause Publications, Iola, WI, 197 p.
- Shipley, R. M., 1971. *Dictionary of Gems and Gemology*, 6th edition. Gemological Institute of America, Los Angeles, California, 230 p.
- Whitting, P. d., 1973. *Byzantine Coins*. G. P. Putnam Sons, New York, 311 p.

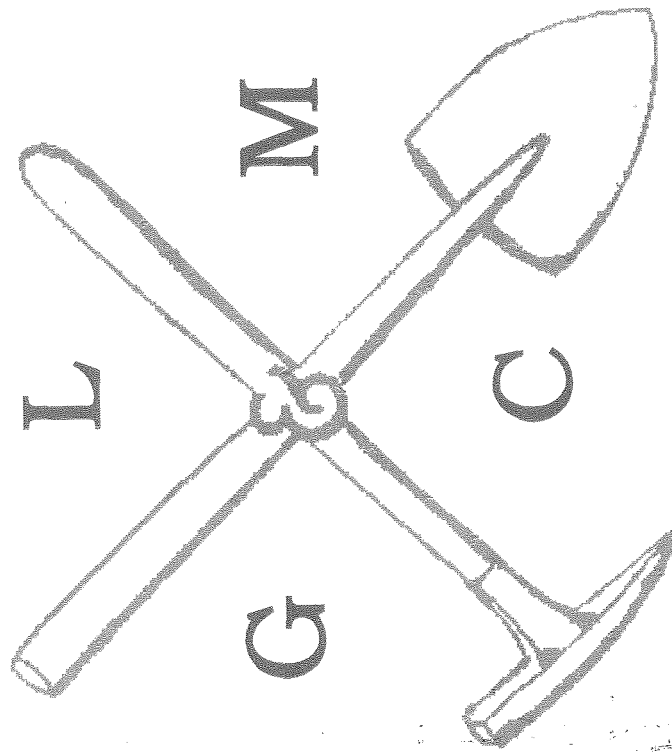
more chat:

I hope that several of our members have taken advantage of the two spring classes of SECC to enroll in the classes beginning this week and taught by **Roger Pabian and Bob Fixter**. Roger's class on *Lapidary Techniques* is one of a kind and can help you learn to produce your own beautiful gemstones. Bob's class on *Diamonds, Gems, and Jewelry* can help you appreciate some of the finer things in life. If you're not in class and are interested you should watch for the next class schedule and take the plunge. Ask some of the persons who have already enjoyed. PNP

Just had a call from Grant Bennett who mentioned that our Founder, Irl Everett is painfully recovering at home after a bad fall just before Christmas. We thought you might like to know so that you can send cards.

THE PICK & SHOVEL

January 2001



OFFICIAL PUBLICATION OF

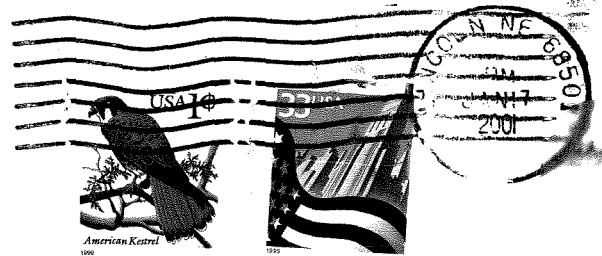
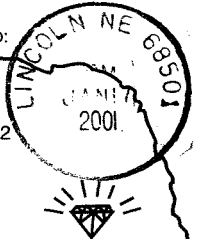
LINCOLN GEM & MINERAL CLUB

LINCOLN, NEBRASKA



Mail Exchange Bulletins To:

Lincoln Gem & Mineral Club
Box 5342
Lincoln, Nebraska 68505-0342



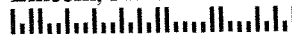
H. E. L. P.

Help Eliminate Litter Please

Associated with



Jim Atkins
3028 So. 35th St.
Lincoln, NE 68506



6850673218



2001 ELECTED OFFICERS

President	Jim Atkins,	3028 So.35th St.	Lincoln, NE 68506	483-1610
1st Vice Pres.	Grant Bennett,	721 No. 58 th St.	Lincoln, NE 68505	466-5377
2nd Vice Pres.	Susy McMahan	5636 Greenwood St.	Lincoln, NE 68507	464-0065
Secretary:	Vera Lyman,	420 N. 56th St.	Lincoln, NE 68504	464-6089
Treasurer:	Phyllis Parks,	2435 So. 19th St.	Lincoln, NE 68502	476-6798
Board Member.	Charlene Bingell	925 El Avado Avenue	Lincoln, NE 68504	466-4877
Board Member	David Heffelbower,	1819 Washington St.	Lincoln, NE 68502(ceil)	499-2970
Board Member	Brett Jurgens,	14421 Danvers St.	Waverly, NE 68462	786-2756
Board Member	James Marburger	330 Locust	Hickman, NE 68372	792-2348

Nominating Committee

3 years	David Bingell
	Billie Heffelbower
2 years	Jim Parks
	Charlene Bingell
1 year	Jerry Moore
	Kevin Schwartman
	Chairman-Immediate Past President Edward Ridge

Long Range Planning & By-Laws Committee

3 years	Vera M. Lyman
	Roger K. Pabian
2 years:	Charles Wooldridge
	Kevin Schwartman
1 year:	David Heffelbower
	Jim Parks

Standing Committees

Membership:	Shirley Rockel ?	Programs:	David Heffelbower ?
Education:	Roger Pabian ?	MWF Liaison:	Vera Lyman
Field Trips:	? Coordinator	Scholarship:	Susan Taylor ?
Historian:	Susy McMahan ?	Christmas Party	Susy McMahan ?
Hospitality:	Charlene Bingell		
Study Coordinator:?		2001 Show:	Jim Marburger
Housing/Property:	Jim Parks	2002 Show:	
Youth Activities:	Kay Jurgens ?	2001 Swap	Charlene & David Bingell
Librarian:	Roger Pabian ?	2002 Swap:	

Auditing Committee:? Jerry Moore, Mike Jurgens, Francis Belholovy

Gem Palette Correspondent: Grant Bennett ?

Geology Day Coordinator: 2nd Vice President

L. G. M. C. Web Page Address :

<http://nesen.unl.edu/lgmc/lgmc.html>

Your PICK & SHOVEL Staff

Publisher:	Lincoln Gem & Mineral Club, Inc., P.O. Box 5342, Lincoln, NE 68505-0342
Editor:	Phyllis Parks 476-6798
Business Reporter:	Vera Lyman 464-6089
News Reporters	All Club Members
Circulation:	Jim Parks 476-6798

The *PICK & SHOVEL* is the official publication of the Lincoln Gem & Mineral Club, Lincoln, Nebraska. Articles and items appearing within may be reproduced in other club bulletins, provided proper credit is given to the *PICK & SHOVEL* and the author and that a reprint of the bulletin is sent to the editor of the *PICK & SHOVEL*.

The purpose of this corporation shall be to study, promote an interest in, and disseminate knowledge of lapidary and various Earth Sciences including but not necessarily limited to geology, paleontology and mineralogy. It shall be a particular purpose of the corporation to provide education in these fields to its members and the general public, particularly youth and student groups.

J. J. & L. ROCKS and MINERALS

GEMS - CABS
ROUGH - SLABS - MOUNTINGS
STERLING SILVER - GOLD FILLED - 14K GOLD
SILVER SUPPLIES - TOOLS - MACHINERY - NEW AND USED
CUSTOM SERVICES FOR SLABS, FLAT LAPPING, AND CABOCHONS

STARTING OUR 26th YEAR

330 LOCUST
HICKMAN, NE 68372-0068

PHONE
402-792-2337

"PROVIDING SUPPLIES FOR THE NOVICE TO THE DISCRIMINATING ROCKHOUND"
Please Call for Appointment

IT'S TIME

TO START THINKING ABOUT

LINCOLN GEM & MINERAL CLUB's

43rd Annual Show
at

PERSHING MUNICIPAL AUDITORIUM

March 24 - 25, 2001

"INNER BEAUTY"

Show Chairman - James Marburger

Read your bulletin for new materials or specials from the above advertisers.

Advertising by rock-hobby business or interest is permitted with the approval of the Board. The rate now set at \$15.00 per full page; \$7.50 per 1/2 page; \$4.00 per 1/3 page; and \$3.75 per 1/4 page(min) per issue, paid in advance. These ads will be placed through the bulletin as space permits.

Subscription to the Pick & Shovel is \$10.00 per year mailed.

Dues to Lincoln Gem & Mineral Club are as follows:

Adult	(ages 16 and over)	\$10.00 per year
Junior	(ages 12 to 16)	\$ 2.00 per year
Family Membership	(Husband,wife,resident children under age 16)	\$22.00 per year

New memberships must be approved by the Board, after the applicant attends at least one meeting of the club and pays the above dues plus a \$5.00 registration fee.