

CALENDAR

Meeting: Saturday, October 27, 7:30 PM, Bethany Park Indoor Shelter, Cotner and Vine Streets. Each family should bring a dessert to share and the club will provide hot coffee. This is our Halloween celebration so come as your favorite gem, mineral or fossil and join in the fun.

Program: Gem Dig--bring your best eyes, lights, tweezers, magnifiers and good luck.

Youth: See your YOUTH PAGE and be there at 7 PM.

November 18, 2000--Annual Meeting and Election of Officers--7:30 PM, Nebraska Center

Sunday, December 10, 5 to 9 PM, Christmas Buffet, Antelope Park Indoor Shelter, 31st & Sumner
(More in next bulletin)

..... **NEXT LGMC SHOW - MARCH 24-25, 2001, Pershing Auditorium**
(Our 43rd Annual Show)
"INNER BEAUTY"

Nearby Shows to Visit

- | | | |
|------------|------|--|
| Oct. 13-15 | SHOW | Greater Detroit Gem & Mineral Show, Warren, Michigan |
| Oct. 21-22 | SHOW | Grand Island, NE Show, Fonner Park |
| Oct. 21-22 | SHOW | Des Moines Botanical Center |
| Oct. 28-29 | SHOW | Fort Kearney Rock Club, Hilltop Mall, Kearney, NE |

A special welcome to those persons who have made inquiries about Lincoln Gem & Mineral Club. Come be our guest at this 'Dessert Supper in the Park' and enjoy the 'Rock Costumes', Gem Dig and Social Time.

2001 REGIONAL SHOW SCHEDULE

EASTERN FEDERATION
July 13-15
Syracuse, New York

AFMS/SOUTH CENTRAL FEDERATION
June 11-17
Arlington, Texas

ROCKY MOUNTAIN FEDERATION
June 8-10
Rosewell, New Mexico

CALIFORNIA FEDERATION
June 22-24
Paso Robles, California

NORTHWEST FEDERATION
August 20-Sept. 1
Enumclaw, Washington

MIDWEST FEDERATION
Sept. 7-9

SOUTHEAST FEDERATION
To be announced

Rice Lake, Wisconsin

YOUTH NOTES

With so many responsibilities substitute teaching and running the before and after school programs Youth Leader Kay Jurgens has had little time on her hands lately. Because of this, Brett Jurgens has agreed to assume the responsibility and privilege of Youth Leader.

With that change will come some new ideas.

First of all I would like to say hi. I don't think I need to introduce myself. I believe that everybody knows me.

I grew up loving rocks in the club. And it meant a lot to me when an adult member would give me a specimen for my collection. With that memory in mind, the juniors will start a new tradition in October. Every month, we will have a little talk about a mineral. At the end of the talk, each junior will get a specimen of that mineral.

When I think of Halloween, scary things sometimes come to mind. Black cats, witches and goblins, and full moons. And when I think of full moons, I think of wolves howling towards the sky. So, come to the October meeting for your free specimen of wulfenite, a beautiful mineral. Also for October, bring your tweezers and magnifying glasses as we are going to have a Gem Dig as well.

After the talk on wulfenite, we will have some business to discuss. It has been awhile since the juniors took a field trip, so that will be one topic to discuss. We will need to discuss other possible junior activities, and the rock show, which will be upon us before we know it.

The junior booth at the rock show has grown year after year. Maybe we can do something this year to make it truly memorable.

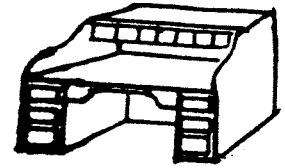
The junior meetings always occur at 7 pm, half an hour before the regular meeting.

Just a reminder that the October meeting is the annual costume party, so juniors be sure to come dressed as your favorite rock or mineral.

Hope to see all of you on the 23rd at seven.

Brett Jurgens





From The President's Desk

Hello LGMC Members

Hello LGMC Members

I want to give a special 'Thank You' to Eric Fritsch for his show of the New CD of 'Minerals of the World'. The people that were at the meeting liked it. Would be nice if the club purchased this program for our Library. It is used with the computer and even pronounces the names of the minerals. If anyone is interested to have the program you might contact Eric or our club treasurer as we could get a lower price if at least 6 can be ordered.

I also wish to Thank Eric for his open house to see his minerals the weekend of the Omaha Show. I went to both the Show and Eric's place and got some goods from both places.

I went to the State Show at Schuyler and am planning to go to the Grand Island Show on Saturday, October 21st. **If I go I can take up to 5 people with me so call before Friday the 20th to let me know if you would like to go.** It's Fall and time to see fall shows.

Also Fall is the time to watch trees change color. Some of us will water our trees, lawns, shrubs and other plants for the long winter. Some of you might take cuttings of plants like impatiens, begonias, geraniums, coleius and other plants. When you cut plants dip in 'root hormona' then put in a medium which is made up of some rock (yes rock) like sand, perlite (volcanic lava crushings subjected to great heats), vermiculite (micaceous ore), and water(melted ice) which is not best but everyone uses it. Porous soil may be used. Yes we know t soil is made up of-special inorganic parts.

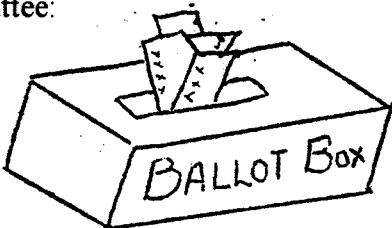
Well I hope to see many of you at the next meeting, October 28, at Bethany Shelter, Cotner and Vine Streets. It is our Halloween party with coffee by club and desserts by you the club members. Rock Costumes are desirable but not mandatory. Just wear a **green shirt** and pretend you are **JADE**.

Edward Ridge

Nominating committee report:

The following slate of candidates for our 2001 Officers and Board of Directors was announced by Charles Woodridge, Chairman after conference with the nominating committee:

- President James Atkins
- 1st Vice President Grant Bennett
- 2nd Vice President Susan McMahan
- Secretary Vera Mae Lyman
- Treasurer Phyllis N. Parks
- Members of the Board-Charlene Bingell, David Heffelbower
Brett Jurgens James Marburger



There were no nominations from the Floor. Nominations will again be called for prior to balloting at the November Election. (Nominees must have given consent before their name is entered.) We shall also nominate and elect two persons to the nominating committee for a three year term.

Make plans to be at the November Meeting so we will have a quoram for the Election!

2001 SHOW PLANS to date:

The theme of the 2001 Gem Show is "Inner Beauty".

Committee chairpersons assigned thus far are: James Marburger, Show Chairperson; Sharon Marburger, Dealer Chairperson; Francis Belohlovy, Floor Chairperson; Roger Pabian, Advertising Chairperson; Kevin and Katherine Schwartzman, Awards; Grant Bennett, Programs; Edward Ridge, Displays; John Harrison, Special Features; Vera Lyman, Tickets and Security; Phyllis Parks, Treasurer and Secretary; Kay Jurgens, Junior Activities; and Brett Jurgens, Selling Demos.

We need volunteers for Working Shop Chairperson, Nonselling Demos Chairperson, and a few other positions.

Twelve dealers have signed contracts for the show. They are: P.J. Andrist's Rocks, Custom Gems, Jaynes, Francina Maria Designs, Westside Agates, The Crystal Singer, Peterson's Rocks & Gems, Rusty's Minerals, Teton Gems, Schooler's Minerals & Fossils, Simon's, and J.J. & L. Rocks and Minerals.

Special Features participants have been contacted, none of whom have responded with formal acceptances. Special Features contacted are: Petrified wood displays, farm equipment made from petrified wood, scale replicas of antique farm machinery and wagons, conestoga wagons in petrified wood, world famous Intarsia pictures, cabachon display from around the world and others to be announced.

Please make plans to volunteer for set up day and other show activities. Remember, your displays and participation are necessary to ensure everyone has an enjoyable show.

A working show committee meeting will be called in the future, when time allows. Thanks to all who have volunteered.

James Marburger, Show Chairman

LINCOLN GEM & MINERAL CLUB, INC. - BOARD OF DIRECTORS - Sept. 6, 2000
 7:00 P.M. @ Kinkos, Conference Rm. 48th & Vine

President Ridge called the Meeting to order with 8 Board members present, as well as Charles Wooldridge & Jim Marburger.

Minutes of the May Meeting were approved with motion by Jim Atkins, 2nd by Phyllis Parks. Carried.

Summer Treasurer's report and paid bills approved with motion by Grant Bennett, 2nd by Dave Heffelbower. Carried.
 Current bills approved with motion by Vera Lyman, 2nd by Grant Bennett. Carried.

Treasurer to purchase new check endorser from Pinnacle Bank.

OLD BUSINESS: Former and present Club members deceased during the past year were Evelyn Ulrich, Tom Simmons, Gene Eno, and Lois Everett.

NEW BUSINESS: Question of subscription renewal of "Rocks & Minerals" for UNL Geology Library. Motion by Grant Bennett to renew for 2 years @ \$ 118.40. 2nd by Jim Atkins. Carried.

Jim Marburger, 2001 Show Chairman, presented the proposed budget for the 2001 Show. Discussion followed. Motion for presentation with approval to rank & file by Phyllis Parks, 2nd by Dave Heffelbower. Carried.

MEMBERSHIP: Membership dues received from Mickey Lutjeharms. Still needs to attend a meeting. Inquiry from Erica Rogers showing great interest along with husband and 4 children.

MEETINGS: Board Meeting - Oct 4, @ 7:00 P.M. @ Kinkos
 October 28 @ Bethany Park Shelter - Halloween - Dessert Supper
 November 18 @ Nebraska Center - Annual Election
 Sunday, December 10, 5-9 PM (Eat at 6:00) Christmas
 Susan McMahan, Chairperson Antelope Park Shelter

The 2001 SWAP will be chaired by David & Charlene Bingell.

NOMINATING COMMITTEE: Chair Charles Wooldridge contacted each member of the Board for possible positions on the Officers slate for 2001. He will present his slate at the General Meeting on Sept. 23.

Eric Fritsch presented the program at the close of the meeting. I did not get to stay, but I'm sure it was excellent. THANKS Eric.

Respectfully submitted,

Vera Lyman
 Vera Lyman, Secretary

LGMC Treasurer's Report for September 2000

	Pinnacle Bank Checking Balance 8/ 31/ 2000	\$ 1731.51
Receipts:		
2001 Show Dealer Fees (paid in advance)	4000.00	4000.00
Payments:		
Postage 3 months P & S (300 @ .33)	99.00	
Kinko's Sept. Board Meeting	15.00	
Office Max-Sept. P & S 32.80		
3 months covers 27.95		
Misc. Supplies 9.23	69.98	
Heldref Publications-2 yr.Sub-UNL Geo.Dept. Rocks & Minerals	118.40	
Roger Pabian-Library Books at MWF Meeting	15.75	
Nebr. Center Continuing Education-Sept.Meeting	<u>100.00</u>	<u>418.13</u>
	Pinnacle Bank Chkg. Balance 9/30/2000	5313.38

LINCOLN GEM & MINERAL CLUB, INC. - GENERAL MEETING - Sept. 23, 2000
7:30 P.M. Nebraska Center, Beatrice Rm

18 Adult - 1 Junior - Mickey Lutjeharms, new member present

May minutes as printed were approved with motion by Shirley Rockel, 2nd by Dave Heffelbower. Carried.

May Treasurer's report approved as printed with motion by Adeline Nolde, 2nd by Billie Heffelbower, Carried.

OLD BUSINESS: State Show this weekend. Delegates meet Sun. at 1:00 P.M. at St. Mary's Social Hall, Schuyler. Our delegates are Grant Bennett, Dave Heffelbower, Jim Marburger, and Susan McMahan.

NEW BUSINESS: 2001 Show Chairman, Jim Marburger presented the suggested Budget as printed in the Pick & Shovel, for approval. Motion by Phyllis Parks, 2nd by Shirley Rockel. Carried.

Nominating Committee Chairman Charles Wooldridge presented the following slate for office:

President - Jim Atkins
First Vice - Grant Bennett -
Second Vice - Susan McMahan
Secretary - Vera Lyman
Treasurer - Phyllis Parks
Board of directors (4 needed) - Charlene Bingell
- Dave Heffelbower
- Brett Jurgens
Jim Marburger

Nominations for all offices called for from floor, none received.

MEETINGS:

October - Saturday Oct. 28, 7:30 P.M. Bethany Park Shelter, Cotner/Vine
Halloween Party with coffee by club and desserts by Members
"Rocky Costumes" optional.

November - Saturday Nov. 18 - a week early due to Thanksgiving.
Nebraska Center, Beatrice Rm. at 7:30 P.M.

December - Christmas Party - Chaired by Susy McMahan
Sunday Dec. 10, 5-9 P.M. (eat at 6 P.M.) Member Pot Luck!
Antelope Park Shelter House, 31st and A St.

January - 2001 Indoor Swap - chaired by David & Charlene Bingell.

Board Meeting - Oct. 4, (Wed) at 7:00 P.M. at Kinkos.
October 4 also deadline for Pick & Shovel Copy.

Respectfully submitted,

Vera Lyman
Vera Lyman, Secretary

THANKS

Roger for this message and the Alexandrite Article which I plan to use in our November Bulletin. Phyll

New Lapidary Session

The new session of lapidary classes through Southeast Community College began on October 9. There are 12 people currently enrolled. Many thanks are due to Adeline Nolde and members contributions to the silent auctions that have built up the lapidary fund. We purchased two new 80 grit diamond grinding wheels and two new 240 grit disks for the Hi-Tech machines. I'll give you a performance report next month when we see how they work. I have also moved the cup machine that Bill White made for me to the lapidary shop. It will stay there until the one I am building is completed. I plan to have the lapidary students again work at our 2001 show. They performed admirably at our 2000 show. Thanks to LG&MC for supporting the lapidary classes.

Roger K. Pabian

STATE DELEGATES MEETING 2000 - LGMC Delegate Grant D. Bennett

A formal meeting was held at the Schuyler Gem & Mineral Show, Sept. 24, 2000 at 1 PM. President Ed Anderson opened the meeting. Donna Farlow, Secy.-Treas. Called off the names of the Officers and Club Delegates to see if we had a quorum, we did. Donna read the minutes of the last meeting. They were passed as read. (200 members in state and \$332.00 in bank at present)

A plaque is being presented to both Margaret and Henry Hohnholt. Both of them have served at least 20 years in support of the Nebraska Gem Clubs. The plaques will be presented to them at the Grand Island Show which is being held at Fonner Park, Oct. 21-22.

For new business a suggestion was made that any club wanting a flyer in the Gem Palette should pay that month's distribution, approximate cost \$13.75, a good idea. It was also stated to keep the Gem Palette at \$3.25 per year but to charge \$5.00 per year to a person not belong to a club. NAOESCI is short of funds to keep the Gem Palette going but a raise in price was not voted in.

Pat Akins was commended on his work to put out an excellent Gem Palette. Like all new editors he tells me their are bugs to work out. By the way Pat is a member of LGMC.

Clubs were asked if any were willing to make a donation to the **new discovery center at Fort Robinson State Park.** (Our other delegate, David Heffelbower added the information that one of the major attractions at the new center will be the intertwined mammoth tusks which have been located at Nebraska Hall for many years.) The cost of the new center is set at 3 million. If a club or individual wishes to donate send to Mimi Lou Moody, 410 Reed Street, Crawford, NE 69339. Let her know what it is for and from whom.

The State Show for 2001 will be in Omaha. A request was made for each club to bring or send donations for the state auction to benefit the Gem Palette.

The NAOESCI officers for the coming year are as follow:

President	Ed Anderson
Vice President	Ben Vrana
Secretary-Treasurer	Kathy Highstreet
Board of Directors	Roy Bowers, Grant Bennett, Maurice Peterson, Margaret Hohnholt
Nominating Committee	Erma Pharoah

It was a good productive meeting. We adjourned at 1:50.

** ** * * * * * * * * * * **

ADVENTURES BY GRANT

Was off to the Nebraska Mineral & Gem Club Show in Omaha on September 30-October 1, 2000. Was easy to find The Holiday Inn. Did have trouble locating the area of the show. This was taken care of by placing directional signs at various spots. What a spacious area, well lighted and plenty of room to move around in. The club members did real well in setting up and organizing their varous duties. Was greeted by Bill Rushlau, the Show Chairman. He directed me to the spot to set my card table for the Old Timers Mineral Club. Did arrive a bit early so I took time to look at thirty-three fantastic cases. There were nine dealers selling everything needed for the rockhound. Nine demonstrators showing art of carving, faceting, beading, chain making, fossil cleaning, and maleable precious metals.

The show opened early as people were waiting to get in. The weather cooperated and had good attendance both days.

Did gain some new members for the Old Timers. Those who stopped by to talk recognized me by my green vest.

Thanks again for a wonderful show. See you again down the road.

Grant D. Bennett

Everyone Counts

By Dan Lingelbach, AFMS President

You may read this before the AFMS/RMFMS Show and Convention in Moab, but most likely it will be about the time of the Show. If it is before, I hope that you are planning to participate, if after, then I hope you attended and found it informative, educational and enjoyable.

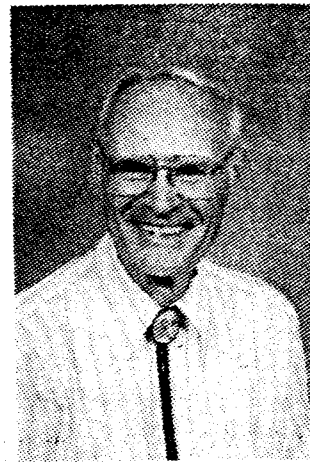
As you know, this is my last official message as President and I want to thank all of you who have helped to make this Federation's activities helpful to the clubs. If I tried to enumerate all of the Officers, Directors and Committee Chairs who have contributed so much of their time and energy to this Federation, I would likely leave out someone. Therefore, I want to thank all of them for their dedicated service to this Federation. You see some of their names in the side panels of this newsletter and in their printed reports but others who kind of work behind the scenes are only evident in the annual reports. However, everyone, whether in the newsletter or not is important to the operation of this Federation and in most cases are important to the operation of their Regional Federations and clubs.

This has been an interesting, educational and enjoyable year. In traveling to the Regional Federation Shows and Conventions I have met a lot of nice people and visited with those we have known. That is the one satisfying benefit of this position. I have also heard of a lot of accomplishments but unfortunately also heard of things that are somewhat disturbing. In not hearing both sides of an event, it is hard to know what to do. However, my limited observation suggests there is a problem, or as I call it 'an occupational hazard', that some of us have as Federation or Club Officers. That hazard is that some of us have been involved so long that sometimes we are reluctant to consider new suggestions about how the Federation can help the clubs carry out their purposes. We are inclined to think that those suggestions won't work or "we tried that before and it didn't work" or "we have always done it this way". This then stifles the enthusiasm of those who make the

suggestions. This sometimes causes divisions among the clubs or members (or Federations). We all need each other and if we lose someone because of our actions or in actions, it is a loss to all. The insurance program of the Rocky Mountain Federation is an example of one of those suggestions that didn't originally get the attention it needed. However, through the perseverance of a club member, not officer, it succeeded and provides a great benefit to many of the clubs. In this case the person who presented this was willing to put in the effort to get it completed.

I know it's hard to know if a suggestion is going to better the clubs, but some of us are automatically inclined to say no. However, those who make the suggestion must be willing to help carry out the task and not expect someone else to make all the effort. I applaud those people who try to mend broken relationships among members, clubs or federations. We all need to recognize our mistakes and try hard to make sure that we haven't alienated someone by our actions. If the above two paragraphs seems like too much preaching, I apologize, but remember we all need each other and any member or club who leaves is a loss to all.

I hope I have responded to everyone's requests and suggestions this year. In some cases you may need to remind me again. I'll be around next year as your Past President. If by chance next year you are called on to help, I hope you will be inclined to say yes as Isabella Burns, our next President, has some great plans in mind. This is a great hobby with great people and if we all help it will still continue to benefit this society of ours.



2000 Elected Officers

President	Edward Ridge,	2507 A Street,	Lincoln, NE 68502	477-8469
1 st Vice Pres.	Jim Atkins,	3028 So. 35th St.	Lincoln, NE 68506	483-1610
2 nd Vice Pres.	Grant Bennett,	721 No. 58 th St.	Lincoln, NE 68505	466-5377
Secretary:	Vera Lyman,	420 N. 56th St.	Lincoln, NE 68504	464-6089
Treasurer:	Phyllis Parks,	2435 So. 19th St.	Lincoln, NE 68502	476-6798
Board Member:	Kenneth Doe,	925 El Avado Avenue	Lincoln, NE 68504	466-4877
Board Member	David Heffelbower,	1819 Washington St.	Lincoln, NE 68502(ceil)	499-2970
Board Member	Brett Jurgens,	14421 Danvers St.	Waverly, NE 68462	786-2756
Board Member	Susan McMahan,	5636 Greenwood St.	Lincoln, NE 68507	464-0065

Nominating Committee

3 years	Jim Parks
2 years	Charlene Bingell
	Jerry Moore
1 year:	Kevin Schwartzman
	Roger Pabian
	Bill Rockel

Chairman: Past President Charles Woodridge

Long Range Planning & By-Laws Committee

3 years:	Charles Woodridge, Chairman
	Kevin Schwartzman
2 years:	David Heffelbower
	Jim Parks
1 year	Vera Lyman
	Roger K. Pabian

Standing Committees

Membership:	Shirley Rockel	Programs:	David Heffelbower
Education:	Roger Pabian	MWF Liaison:	Vera Lyman
Field Trips:	? Coordinator	Scholarship:	Susan Taylor
Historian:	Susy McMahan	Christmas Party	Susy McMahan
Hospitality:	Charlene Dingell		
Study Coordinator:?		2000 Show:	John Harrison
Housing/Property:	Jim Parks	2001 Show:	Jim Marburger
Youth Activities:	Kay Jurgens	2001 Swap	Charlene & Daavid Bingell
Librarian:	Roger Pabian	2000 Swap:	Charles Woodridge
Auditing Committee:?	Jerry Moore, Mike Jurgens, Francis Belholovy		

Gem Palate Correspondent: Grant Barnett

Geology Day Coordinator: 2nd Vice President

L. G. M. C. Web Page Address :
<http://nesen.unl.edu/igmc/igmc.html>

Your PICK & SHOVEL Staff

Publisher:	Lincoln Gem & Mineral Club, Inc., P.O. Box 5342, Lincoln, NE 68505-0342
Editor:	Phyllis Parks 476-6798
Business Reporter:	Vera Lyman 464-6089
News Reporters	All Club Members
Circulation:	Jim Parks 476-6798

The *PICK & SHOVEL* is the official publication of the Lincoln Gem & Mineral Club, Lincoln, Nebraska. Articles and items appearing within may be reproduced in other club bulletins, provided proper credit is given to the *PICK & SHOVEL* and the author and that a reprint of the bulletin is sent to the editor of the *PICK & SHOVEL*.

The purpose of this corporation shall be to study, promote an interest in, and disseminate knowledge of lapidary and various Earth Sciences including but not necessarily limited to geology, paleontology and mineralogy. It shall be a particular purpose of the corporation to provide education in these fields to its members and the general public, particularly youth and student groups.

J. J. & L. ROCKS and MINERALS

GEMS - CABS
 ROUGH - SLABS - MOUNTINGS
 STERLING SILVER - GOLD FILLED - 14K GOLD
 SILVER SUPPLIES - TOOLS - MACHINERY - NEW AND USED
 CUSTOM SERVICES FOR SLABS, FLAT LAPPING, AND CABOCHONS

STARTING OUR 25th YEAR

330 LOCUST
 HICKMAN, NE 68372-0068

PHONE

402-792-2337

"PROVIDING SUPPLIES FOR THE NOVICE TO THE DISCRIMINATING ROCKHOUND"
 Please Call for Appointment

IT'S TIME

TO START THINKING ABOUT

LINCOLN GEM 7 MINERAL CLUB'S

43RD Annual Show
 at

PERSHING MUNICIPAL AUDITORIUM

March 24 - 25, 2001

"INNER BEAUTY"

Show Chairman - James Marburger

Read your bulletin for new materials or specials from the above advertisers.

Advertising by rock-hobby business or interest is permitted with the approval of the Board. The rate now set at \$15.00 per full page; \$7.50 per 1/2 page; \$5.00 per 1/3 page; and \$3.75 per 1/4 page(min) per issue, paid in advance. These ads will be placed through the bulletin as space permits.

Subscription to the *PICK & SHOVEL* are \$10.00 per year mailed.

Dues to Lincoln Gem & Mineral Club are as follows:

Adult	(ages 16 and over)	\$10.00/year
Junior	(ages 12 to 16)	\$2.00/year
Family Membership	(Husband, wife, resident children under age 16)	\$22.00/year

New memberships must be approved by the Board, after the applicant attends at least one meeting of the club and pays the above dues plus a \$5.00 registration fee.



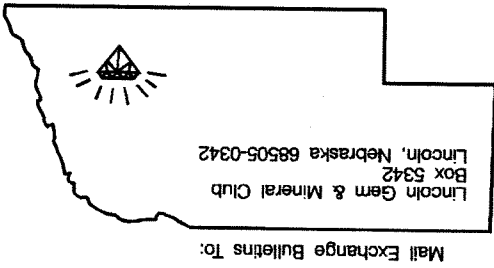
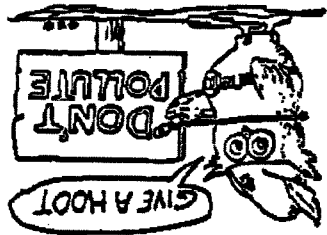
Associated with



Richardson

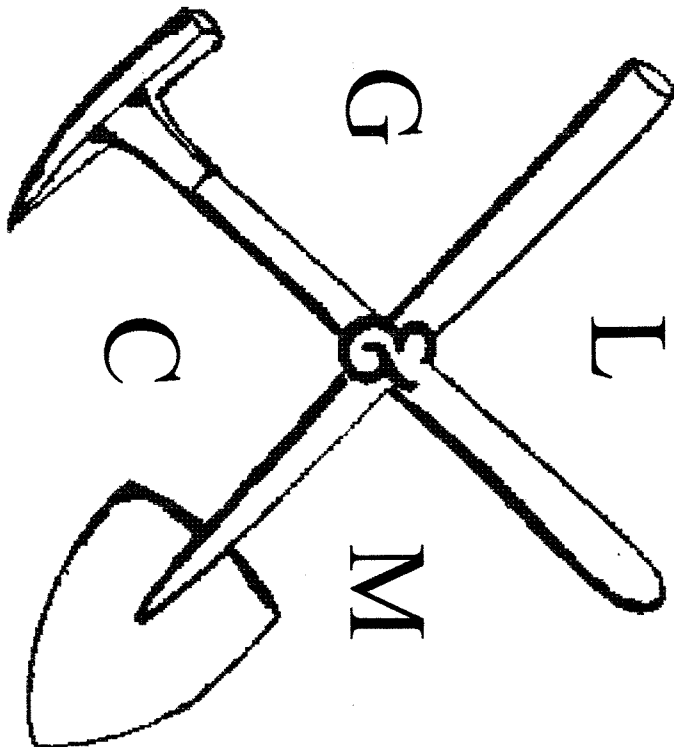
Help Eliminate Litter Please

H. E. L. P.



THE PICK & SHOVEL

October 2000



OFFICIAL PUBLICATION OF

LINCOLN GEM & MINERAL CLUB

LINCOLN, NEBRASKA