

CALENDAR

Regular Meeting Saturday, October 25, 1997, Antelope Park Shelter, 31st & Sumner
Nominating Committee Report for 1998 Officers & Board--This had to be
rescheduled from September because we did not have a quorum to transact
official business. **Where were you? We needed 4 more members.**

This will be our Dessert Supper with coffee provided by the club and
desserts of your choice to share. Come dressed or representing your
mystery **ROCK** and join in the festivities.

Youth Meeting 7:00 PM, Be there in your Rock Costume.

Club Members--See Editor's Comments on Page 4B--Please give me some answers!

November 22, 1997 Annual Meeting, Election of Officers for 1998. UNL Center for
Continuing Education, Beatrice Room, 7:30 PM.

December 14, 1997 (Sunday) 5 to 9 PM, Antelope Park Shelter. Christmas Party & Buffet.
Installation of 1998 Officers & Board if Directors,

NEXT LGMC SHOW - MARCH 21-22, 1998, Pershing Auditorium
(Our 40th Annual Show)

Nearby Shows to Visit

October 18-19, 1997 SHOW Grand Island Earth Science Soc., 23rd Annual
Nov. 8-0, 1997 **State Show** Fort Kearney Rock Club, Host, Kearney, Nebraska

Rock & Mineral Auction

Cedar Valley Rocks & Minerals Society, Community Center, Palo, Iowa--See Flyer at Club
Meeting or call Editor for more information.--November 8 and 9, 1997

1997 REGIONAL SHOW SCHEDULE

EASTERN FEDERATION
/AFMS Combined
October 17 - 19
Jackson, Mississippi

CALIFORNIA FEDERATION
June 20 - 22
Ventura, California

SOUTH CENTRAL FEDERATION
April, 5 - 6
Glen Rose, Texas

NORTHWEST FEDERATION
August 1 - 3

Idaho Falls, Idaho

SOUTHEAST FEDERATION
October 4-5

Jacksonville, Florida

ROCKY MOUNTAIN FEDERATION
June 6 - 8
Durango, Colorado

MIDWEST FEDERATION
October 24 - 26
Davenport Iowa

YOUTH NOTES

by Kay Jurgens

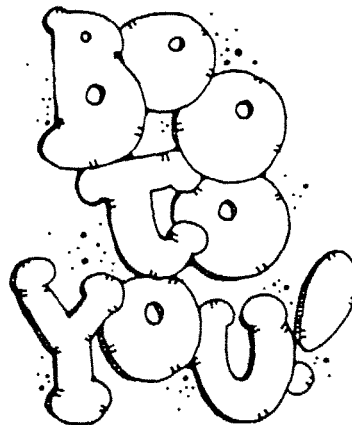
Our Halloween party is just around the corner, and we hope that everyone comes in costume. In this puzzle are a few gems and minerals that would be suitable for a costume. See if you can find:

✓ AGATE
 ✓ FIRE OPAL
 ○ OPAL

✓ BLOODSTONE
 ✓ GOLD
 TIGEREYE

✓ CAT'S EYE
 ✓ HALITE
 ✓ MOONSTONE

M	A	O	Z	M	O	N	Z	A	E	D	P	T	A	N	H
T	F	U	A	O	G	E	A	N	I	M	I	U	G	V	A
F	I	B	L	O	O	D	S	T	O	N	E	G	A	T	T
G	R	I	R	N	L	I	T	I	P	O	W	I	T	I	O
Y	E	N	A	S	D	D	R	H	A	L	I	T	E	G	K
H	O	C	A	T	S	E	Y	E	L	N	C	P	A	E	L
S	P	A	H	O	O	N	O	X	R	O	C	K	S	R	U
L	A	O	I	N	I	D	I	N	O	V	E	N	T	E	M
M	L	L	M	E	L	S	P	R	I	N	G	I	R	Y	S
O	P	A	E	D	S	H	T	E	R	E	O	N	P	E	D





THE PRESIDENT'S MESSAGE

Fellow Club Members

Saturday, September 27th was to be the initial general meeting for the fall season. Unfortunately there were not enough members present to hold a formal meeting. For the benefit of those few members who were present Roger Pabian took a "The Show Must Go On" attitude and presented one of the most interesting and beautiful programs that I have seen recently.

Due to the inability to hold an official meeting there are a couple of important issues that need to be presented at the October meeting. One will be the presentation of the Slate of Officers recommended by the nominating committee, with nominations also being received from the floor. The other is a complicated proposal that the club assume a relationship with Lincoln Parks and Recreation, overseeing the operation of the Lapidary Shop in the basement of the Auld Pavilion. There are a number of pros and cons to the proposal. My understanding is that the City is looking for ways to increase the utilization of already existing resources. The Lapidary Shop is only used during the times the lapidary class is in session which is 2 hours per week, 24 weeks per year. This represents a very limited amount of time this space is used, especially since the space cannot be used for any other purpose with the shop setup. They would like to see us oversee the shop being used more, i.e. having a night each week when club members could come in and use the equipment. This of course would require proper supervision and insurance that would release the city and the club from liability for injury or damages.

At first glance this proposal is a wonderful opportunity for the club to have a "home base" and a shop to facilitate interest and enhance lapidary skills. The upstairs hall of the building would also be available to rent at a reduced rate to hold general meetings, Christmas Dinner and possibly The Swap. In my dreams I could see having an open shop period the fourth Saturday of the month with the general meeting to follow upstairs. The new resource could attract and hold new members. Maybe some day we would have Pershing Auditorium full of club members cases displaying their lapidary creations during the Annual Show period. Maybe we wouldn't have to worry about not having enough members present at meetings to have an "official" meeting.

In my dreams I also see three or four faithful members agreeing to donate their time to supervise the open shop and then having no one show up. I have nightmares of purchasing a relatively expensive insurance policy, working out a legal contract with the city, recruiting/training approved supervisors and then after a time having to report to the city that "I'm sorry-I guess the interest just isn't there".

After much discussion with others and thought I do not believe this is something we can do. It is a great idea, full of potential, but let's face it, if we can't get members to display at the show, attend field trips, study groups, or even general meetings...??? I will present the details of the proposal at the October general meeting and encourage discussion. If you have thoughts or ideas about this issue please attend.

Wooly

**Lincoln Gem & Mineral Club, Inc.,
Suggested Budget, 40th Annual Show, March 21, 22, 1998**

Anticipated Income:

Retail Dealer Space (14 spaces)	\$4,900.00	
Paid Demonstrators (4 spaces)	100.00	
Gate Receipts	4,000.00	
<u>Total:</u>		9,000.00

Anticipated Expenses*Physical Plant*

Floor Rental	2,700.00
Floor Insurance	100.00
Floor Security	300.00
Floor Miscellaneous Expenses	200.00
Floor Table Covernigs	100.00
Annual Storage of Props	756.00

Show Production

Advertizing	1,500.00
Recognitions	100.00
Printed Programs	200.00
Saturday Buffet	500.00
Speakers, Lectures, Educational Programs	300.00
Special Features, Exhibits	700.00
Gem Dig Materials, Net	100.00
Chairman Expenses	200.00
Miscellaneous Expenses	250.00
City/State Taxes on Gate Receipts	300.00

<u>Total</u>	8,306.00
--------------	----------

Tentative Gain on Show

694.00

LINCOLN GEM & MINERAL CLUB, INC. - BOARD OF DIRECTORS - Sep. 8, 1997
7:30 P.M. @ Lyman home

President called the Meeting to order. Minutes were read. The listing on amount of a Certificate of Deposit was corrected from \$5000. to \$2500. Then approved with motion by Roger P. & 2nd by Ed R. Carried.

Treasurer's report was read. Motion for approval by Vera L. 2nd by Ed R. Carried. One Cert. of Deposit is up for renewal. Board advised treasurer to renew @ best interest rate.

Bills were approved with motion by Ed R, & 2nd by Roger P. Carried.

OLD BUSINESS:

October Meeting has been changed from Bethany Park to Antelope Park because of street construction in area, causing considerable distance from parking lot.

Lapidary Classes for City Parks/Rec are not being held because the City has not budgeted for them. Roger & Wooly will be meeting with Sandy & Rosemary on Wed. (9/10) re: Class, etc.

Grant Bennett has volunteered as the Club Delegate to the MWF Meeting. Motion by Roger P. that the Club award \$100. stipend to our Delegate who attends the Meeting. 2nd by Phyllis P. Carried.

NEW BUSINESS: Nominating Committee must meet and report at the Sep. General Meeting.

SHOW REPORT: Committee chairs discussed. No finalization.

Meeting adjourned.

Respectfully submitted,

Vera Lyman

Vera Lyman, Secretary

LINCOLN GEM & MINERAL CLUB, INC. - GENERAL MEETING - Sep. 27, 1997
7:30 P.M. @ NCCE - Beatrice Rm

Meeting was delayed slightly because President Wooldridge was at Randolph School conducting a Gem Dig.

Meeting was suspended due to lack of quorum. (Only 10 members in attendance). 3 guests present - Don Phillips & son, George; and Mrs. Bennett.

Pres. did announce that Francis Belohlavy has resigned as State Director to the MWF.

THINK ABOUT IT: Roger & Wooly met with those in charge of Linc Parks/Rec. They would like LGMC to enter into contract with City and oversee Lapidary Shop & Classes. Supervisor needed and members could use equipment. Also could rent Auld Pavillion @ \$ 28. per hr. (W/contract @ \$23. per hr.) QUESTIONS - Insurance & Club Liability to public; maintenance of open shop; housekeeping-who?; open shop; storage; kitchen; "Swap" -? sales; and any other questions or concerns you think of.

Respectfully submitted,

Vera Lyman

Vera Lyman, Secretary

L.G.M.C. Treasurer's Report September 1997

NBC Checking Balance 09/30/97 646.05

Receipts: None this month.

Payments:

Office Max-P&S Covers & Ream Paper	24.48	
Office Max-Sept.P & S Printing	15.82	
Office Max-Copies & Box Labels	11.97	
Postmaster--3 months P&S Stamps/Treas.	102.40	
Roll 100 stamps 1998 Show	<u>32.00</u>	186.67
NBC Checking Balance 09/30/97		459.38

EDITOR'S CURIOSITY!!**Why did you join The Lincoln Gem & Mineral Club??**

I joined because I wanted to participate in the meetings, activities, and functions of the club and as a member I feel it is my duty and privilege to go to meetings, participate whenever asked and help to make the club as strong as any other in the nation. During my 38 years in the club I have served as Secretary or Editor or President or Treasurer. I have served on the Nominating Committee, The Long Range & By-Laws Committee, as Show Chairman in 1992 and on the Housing & Property Committee for a good many years with Jim. I have not cut many rocks since the first years when I took the Lapidary Classes - but I have watched and encouraged others and enjoyed the many wonderful displays at our shows, meetings, and in various museums. I feel that as a club member I am obliged to put at least one case in the annual show as well as assist in the production of our special activities. **I count myself as an active member.**

Now to show my wrath at a goodly portion of the dues paying members--all of you that miss the regularly scheduled meetings --for which you are given ample notice via our monthly Pick & Shovel. I'm particularly disturbed at the lack of attendance at our September meeting--only 10 of our 68 members were present--not even a quorum so that we could approve the previous minutes and treasurer's report or even introduce the scheduled slate of officer nominations for the coming year so that it could be printed in the October Pick & Shovel as our standard operating procedures specify. Also you missed one of the best programs ever . Roger had produced a fantastic set of slides and lecture on "Recognition of Ancient Thunder Eggs."

Our By-Laws list a quorum for transacting business as 20% of the adult membership which must include at least 3 of our elected officers---and in September we couldn't even count the 14 persons it would take--although 5 of the ten present were elected officers. Now I realize that sometimes other activities take precedence, or illness strikes, but for members to miss 10 or 11 of 12 planned activities seems to indicate a lack of intention to participate. **So WHY?**

Now for our October meeting we must conduct the September business and prepare for our Annual Meeting in November at which we select the officers and board that will lead us in 1998. Are you going to be a club member and assist in this process or a stay-at-home who just pays dues? You will see by the Calendar Page that we meet this month at Antelope Shelter near The Auld Center near 31st and Sumner-with ample parking, coffee, hot cider and the dessert which you bring. **Please be there.**

Phyllis Parks, Editor and Treasurer

P. S. Please read our President, Wooly's page very carefully and help discuss & be heard as it seems to me like a very important issue. pnp

Omaha Show

Nebraska Mineral and Gem Club of Omaha hosted its 43rd Annual Show at the Radial Social Hall on October 4 and 5. As usual, there were many excellent exhibits. I have always admired the artistic creativity and technical skill of the many jewelry makers in their midst and this years displays in that area lived up to all of my expectations.

One of the working demonstrators there was staffed by Deborah and Jerry Park of Independence, Missouri, and they had handmade glass beads and marbles of very high quality and fine colors. The dealers had a good supply of interesting materials and I found some nice jasper (called Desert Scene) from Utah and a very interesting purple and white opalite that came from a Molybdenum mine in Utah. I also found some nice scenic jaspers from Australia and South Africa. Those who missed the show lost out on a good opportunity to obtain nice new and old materials.

Their show chairman, Bill Rushlau, provided a very fine exhibit of trilobites from various places in the world. Many of the specimens were essentially world class. As a very nice surprise to me Bill offered me a set of reprints of various paleontological papers that included some classics of which I only had very old Thermo-fax or Xerox copies. Needless to say, my research library was enhanced considerably by Bill's generosity and I thank him again for his kind gesture.

I saw several of Lincoln's club members there, including: Kay, Brett, and Janelle Jurgens, Eddie Ridge, Paul Brauch, Jim Null, and Georgie Jones. Jim Null exhibited some of his very nice Lake Superior Agates and I displayed Laguna and Moctezuma agates.

Don't forget that the Topeka Show is October 10 and 11; Grand Island is October 17 and 18, and the Midwest Federation Show is October 24-26 at Davenport, Iowa.

Roger K. Pabian

Fall Lapidary Class

After almost not getting off the ground, the fall lapidary classes at Auld Center finally got started two weeks behind schedule. There are at least five new enrolees and they are proving to be adept students. The new water cooled trim saw is a real improvement over the old oil cooled monsters that have way too small of a coolant capacity. It is really fun to saw quickly and smoothly and not have the excessive vapor and odor. The oil saws will be reserved for slabbing and trimming excessively large or thick pieces and the new saw will be used for normal trimming operations.

This brings to light the observation that if you have a trim saw that has only about a one pint coolant capacity, you might try to expand that capacity to about 1 or 2 gallons of coolant. You will be able to saw with much less spray and vapor as the oil stays much cooler.

RKP

October Displays

I will be unavailable to provide cases for display as I will be at the Midwest Federation Show in October. Any volunteers?

RKP

MIDWEST FEDERATION OF MINERALOGICAL AND GEOLOGICAL SOCIETIES
 Member of the American Federation of Mineralogical Societies

OFFICERS 1996-97

PRESIDENT
 Mr. Robert Miller
 1106 Clayton Drive
 South Bend, IN 48814
 219-291-8332

FIRST VICE-PRESIDENT
 Mr. Harold Rice
 122 Lois Lane
 Mt. Clemens, MI 48043
 810-463-5972

SECOND VICE-PRESIDENT
 Mr. Neil Saupp
 1325 Orlando Drive
 Hazellet, MI 48840
 517-339-2863

SECRETARY
 Miss Jean Reynolds
 187 Tuttle Ave
 Clarendon Hills, IL 60514
 708-323-1882

TREASURER
 Mr. Norman Haasche
 8407 Starbridge Lane
 Canton, MI 48187
 313-455-8596



PUBLISHED MONTHLY
 EXCEPT JULY/AUGUST

OCTOBER, 1997 - Issue No. 364

KITTY STARBUCK, ED.
 7636 V AVENUE EAST
 VICKSBURG, MI 49097

PRESIDENT'S MESSAGE

October should be an interesting month. By the time you receive this MWF Newsletter, the AFMS convention in Mississippi will be either underway or over, with the Midwest Federation convention immediately to follow. I do hope that all MWF club/societies send a representative or Delegate to the MWF convention. There are a few additional ideas which could possibly solve the deficit problem that may be faced down the road.

I would like to thank all the club/societies that have sent me their newsletters this past year. They have all been read and I think I have about a 50 pound pile of paper from them. It is nice to know that there is a lot of activity in our midwest region and that the HOBBY is still alive.

Your next letter will come from someone that has been active in the hobby for a number of years. His interest is yours and he will need your support in the coming year.

Leaving office I would like to thank you for allowing me to serve you in the past year. It has been a busy year with the focus on the POSSIBLE dues increase. No, I did not propose it - but as the President of any organization you support your various committees. All things aside, a HOBBY or any group organization is as good and will last as long as the members support it. Attend the meetings or send a representative to do so. GET INVOLVED. Don't sit back and let a minority of members make decisions for the majority.

May you all find the rock, fossii, or mineral that you have been looking for, happy rock hounding!

Bob

MIDWEST FEDERATION GEM & MINERAL SHOW
Davenport, Iowa River Center,
October 25, 26, 27, 1997

1997 ELECTED OFFICERS

President:	Charles Wooldridge, 836 S. 31st St.	Lincoln NE 68510	475-9034
1st Vice President:	Jerry Moore, 2305 So.35th St.	Lincoln NE 68506	489-4184
2nd Vice President:	Edward Ridge, 2507 A Street.	Lincoln, NE 68502	477-8469
Secretary:	Vera Lyman, 420 N. 56th St.	Lincoln, NE 68504	464-6089
Treasurer:	Phyllis Parks, 2435 So. 19th St.	Lincoln, NE 68502	476-6798
Board Member:	Roger Pabian, 5301 X St.	Lincoln, NE 68504	465-0144
Board Member:	Kay Jurgens, 14421 Danvers St.	Waverly, NE 68462	786-2756
Board Member:	Brett Jurgens, 14421 Danvers St.	Waverly, NE 68462	786-2756
Board Member:	Francis Belohlavy, 3015 Orchard	Lincoln, NE 68503	477-4337

Nominating Committee

3 year:	Shirley Rockel Kenneth Doe
2 year:	Vera Lyman Susan Taylor
1 Year:	James Parks to be appointed
Chairman:	Immediate Past President

Long Range Planning & By-Laws Committee

3 Year:	David Heffelbower Jim Parks
2 Year:	Vera Lyman Roger Pabian
1 Year:	Kevin Schwartman Jim Marburger
Chairman:	Immediate Past President

Standing Committees

Membership:	Shirley Rockel	Programs:	Brett Jurgens
Education:	Roger Pabian	MWF Liaison:	Vera Lyman
Field Trips:	Charles Wooldridge	Scholarship:	Susan Taylor
Historian:	John & Lillie Lewis	Christmas Party:	Shirley Rockel
Hospitality:	Eddie "Lightning" Ridge	1997 Show:	John Harrison
Study Coordinator:?		1998 Show:	Roger K. Pabian
Housing/Property:	Jim Parks	1999 Show:	Jim Marburger
Youth Activities:	Kay Jurgens	1997 Swap:	Roger Pabian
Librarian:	Roger Pabian	1998 Swap:	Francis Belohlavy

Auditing Committee:? Jerry Moore, Francis Belohlavy, Mike Jurgens

Gem Palette Correspondent: Vera M. Lyman

Geology Day Coordinator: 2nd Vice President

L. G. M. C. Web Page Address :

<http://nesen.unl.edu/lgmc/lgmc.html>

Your PICK & SHOVEL Staff

Publisher:	Lincoln Gem & Mineral Club, Inc., P.O. Box 5342, Lincoln, NE 68505-0342
Editor:	Phyllis Parks 476-6798
Business Reporter:	Vera Lyman 464-6089
Circulation:	Jim Parks 476-6798

The PICK & SHOVEL is the official publication of the Lincoln Gem & Mineral Club, Lincoln, Nebraska. Articles and items appearing within may be reproduced in other club bulletins, provided proper credit is given to the PICK & SHOVEL and the author and that a reprint of the bulletin is sent to the editor of the PICK & SHOVEL.

The purpose of this corporation shall be to study, promote an interest in, and disseminate knowledge of lapidary and various Earth Sciences including but not necessarily limited to geology, paleontology and mineralogy. It shall be a particular purpose of the corporation to provide education in these fields to its members and the general public, particularly youth and student groups.

J. J. & L. ROCKS and MINERALS


GEMS - CABS
ROUGH - SLABS - MOUNTINGS
STERLING SILVER - GOLD FILLED - 14K GOLD
SILVER SUPPLIES - TOOLS - MACHINERY - NEW AND USED
CUSTOM SERVICES FOR SLABS, FLAT LAPPING, AND CABOCHONS

STARTING OUR 22ND YEAR

330 LOCUST
HICKMAN, NE 68372-0068

PHONE
402-792-2337

"PROVIDING SUPPLIES FOR THE NOVICE TO THE DISCRIMINATING ROCKHOUND"
Please Call for Appointment



Wooly's Custom Lapidary
Precious/Semi-Precious Gems 836 S 31 St.
Rough Material Lincoln, NE 68510
Jewelry and Supplies 402-475-9034
By Appointment Only

Read your bulletin for new materials or specials from the above advertisers.

Advertising by rock-hobby business or interest is permitted with the approval of the Board. The rate now set at \$15.00 per full page; \$7.50 per 1/2 page; \$5.00 per 1/3 page; and \$3.75 per 1/4 page(min) per issue, paid in advance. These ads will be placed through the bulletin as space permits.

Subscription to the PICK & SHOVEL are \$10.00 per year mailed.

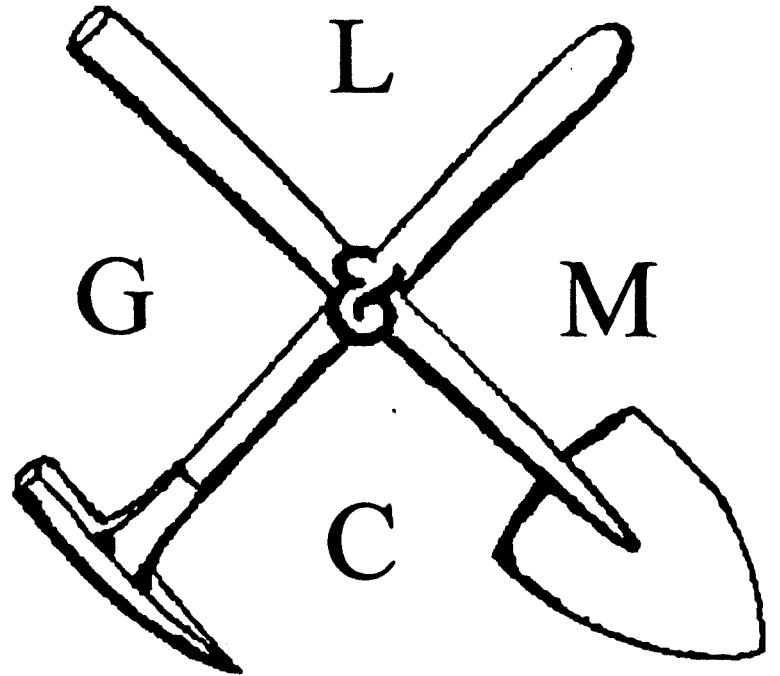
Dues to Lincoln Gem & Mineral Club are as follows:

Adult	(ages 16 and over)	\$10.00/year
Junior	(ages 12 to 16)	\$2.00/year
Family Membership	(Husband, wife, resident children under age 16)	\$22.00/year

New memberships must be approved by the Board, after the applicant attends at least one meeting of the club and pays the above dues plus a \$5.00 registration fee.

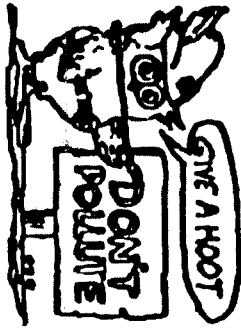
THE PICK & SHOVEL

OCTOBER 1997

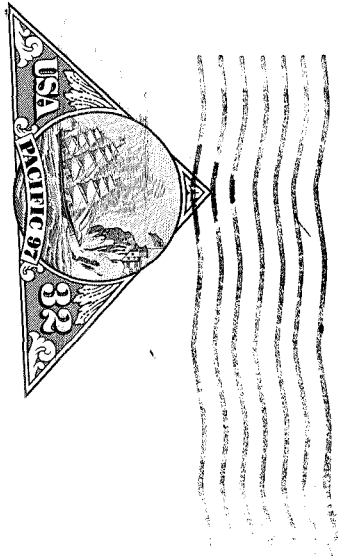
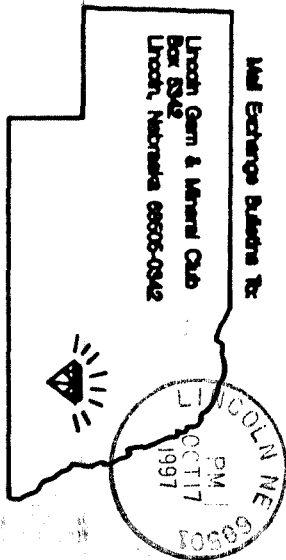


OFFICIAL PUBLICATION OF
LINCOLN GEM & MINERAL CLUB

LINCOLN, NEBRASKA



H. E. L. P.
Help Eliminate Litter Please



Associated with

Edward Ridge
2507 A St.
Lincoln, NE 68502
|||||