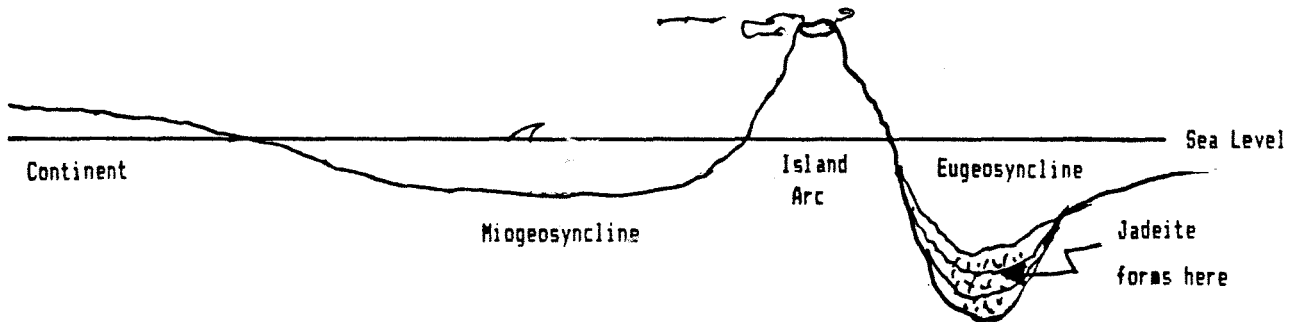




PICK & SHOVEL

INSIDE...

JADE



Volume 29, No. 6
February, 1989

Lincoln Gem and Mineral Club, Inc.

P. O. Box 5342

Lincoln, Nebraska 68505

1989 ELECTED OFFICERS

President: Fred B. Holbert, 2822 S. 13th St., Lincoln, NE 68502	423-5639
1st Vice President: Gerald Moore, 2305 S. 35th St., Lincoln, NE 68506	489-4184
2nd Vice President: C. David Heffelbower, 1819 Washington St., Lincoln, NE 68502	475-4713
Secretary: Vera Lyman, 420 N. 56th St., Lincoln, NE 68504	464-6089
Treasurer: Phyllis Parks, 2435 So. 19th St., Lincoln, NE 68502	476-6798
Board Member: Francis Belohlavy, 1919 "K" St., No. 4, Lincoln, NE 68510	477-4337
Board Member: Roger Pabian, 315 "D" St., Lincoln, NE 68502	474-2034
Board Member: Donald Phillips, 5901 Spruce St., Lincoln, NE 68516	489-7637
Board Member: Shirley Rockel, 1134 West Avon Lane, Lincoln, NE 68505	464-3059

NOMINATIONS COMMITTEE

3 Years: Kevin Schwartman, Chair.
Roger Pabian
Eddie Ridge,
2 Years: Phyllis Parks, Janet Wright
1 Year: C. David Heffelbower,
Bill Rockel

LONG RANGE PLANNING AND BY-LAWS COMMITTEE

3 Years: Kevin Schwartman,
Jim Marburger
2 Years: Bob Wright, Linda Parks
1 Year: Claude Scott,
Phyllis Parks

STANDING COMMITTEES

Calling: Shirley Rockel
Education: Roger Pabian
Field Trips:
Historian: John & Lillie Lewis
Hospitality: Wilma (Billie) Heffelbower
Housing/Property: Jim Parks
Junior Activities: Janet Wright
Librarian: Jim Parks
Membership: Gerald Moore

MWF Liaison: Vera Lyman
Programs: Francis Belohlavy
Scholarship: Marie Taylor
Christmas Party:
1989 Rockhound/Year:
Roger Pabian
1989 Show: John Harrison
1990 Show: Roger Pabian

AUDITING COMMITTEE, 1987-1988

Shirley Rockel
Don Phillips
Francis Belohlavy

YOUR PICK & SHOVEL STAFF

Publisher: Lincoln Gem & Mineral Club, Inc., P. O. Box 5342, Lincoln, Nebraska 68505
Editor: Roger Pabian
Business and Financial Reporter: Vera Lyman
Circulation: C. David and Wilma Heffelbower

The Pick & Shovel is the official publication of the Lincoln Gem and Mineral Club, Lincoln, NE. Articles and items appearing within may be reproduced in other club bulletins provided that proper credit is given to the Pick and Shovel and the author, and that a reprint of the bulletin is sent to the editor of the Pick & Shovel.

CALENDAR OF EVENTS

FEBRUARY

FEBRUARY MEETING: Saturday, February 25, 7:30 PM
Norfolk Room, Nebraska Center
33rd & Holdrege Streets

PROGRAM: Agate mining in Brazil. Amethyst
mining in Brazil. Videotapes from
the Michael Smith Library.

s	m	t	w	t	f	s
			1	2	3	4
5	6	7	8	9	10	11
12	13	14	15	16	17	18
19	20	21	22	23	24	25
26	27	28				

JUNIOR MEETING: 7:00 PM. Projects: How to fold spec-
imen trays. Preparing your show displays.

ANNUAL SHOW: 31st Annual Lincoln Gem & Mineral Club
Show.
Saturday, March 18, 9:00 - 8:00
Sunday, March 19, 9:00 - 5:00
Pershing Municipal Auditorium
226 Centennial Mall South
SEE ENCLOSED FLYER.

NATURE CENTER: Lincoln Gem and Mineral Club has been asked
to provide displays of **gems, minerals, and**
fossils and gem cutting demonstrations at
Chet Ager Nature Center at Pioneers Park on
Sunday afternoon, February 19, 1989, from
1:00 PM to 5:00 PM. Exhibitors and demon-
strators are needed. FFI, Call Roger Pabian,
472-7564.

1989 REGIONAL SHOWS

Del Mar, CA	Hickory, NC	Kalamazoo, MI	Portland, OR	Stillwater, OK	Arlington, TX
May 12-14	Apr. 28-30	June 22-25	June 8-11	July 14-16	June

ATTENTION! BIBLIOPHILES

The Lincoln Gem and Mineral Club's Library exists for education and edification of the club's membership. There are some excellent publications there that deal with every phase of the rock hobby. **Jim Parks** is our club's librarian. The library is stored at Hurlbut Cycle Shop, 7331 Thayer Street. Phone, 466-5440. The directors encourage you to utilize this valuable resource to improve your knowledge and skills.

PRESIDENT'S MESSAGE

One could remark that another club midwinter swap has come and gone, but that wouldn't quite cover it. WOW, what a swap - now that pretty well covered it! Many thanks are do to the organizers, Don Phillips and Roger Pabian, to all those who set tables, and to those who attended. It has been rumored that the large crowds were drawn to the swap because of the president's message in the last "The Pick & Shovel"; what a powerful marketing tool.

Show chairman, Harrison, and his many chairpersons want to remind us all of the need for displays, demonstrators, and raw people power in order to pull off this years show. People will be needed for setup, dismantling, ticket selling and taking, new member solicitation, the sapphire and fossil digs, and help with consuming the Saturday evening banquet. Please contact Mr. Harrison, his helpers or Phyllis & Jim Parks at 466-5440 (daytime) with any offers of assistance.

Those of you who attended the last general meeting heard mention of the possibility of forming study groups within Lincoln Gem & Mineral Club. Stay tuned for further developments next month's "The Pick & Shovel".

For any of you that had the fortitude to wade through our report of the book on the Lizzadro Collection found elsewhere in this addition, we will try to have at least two editions of that book for your perusal at the next general meeting.

It is our intention to start all general meetings promptly at 7:30 PM and that the business portion of those meetings be only as long as needed to complete the business on hand. Francis has excellent programs planned for the future meetings. Our hope is that when new faces appear in our group, they will return because they had fun and had learned something to further their interest in our hobby. Please personally acknowledge any visitors or members whose attendance has been irregular and make they know that they are welcome to our "family".

And finally we wish Godspeed in the recovery of Jim Taylor and are thinking of Marie and Susie as they support Jim. The Taylor family has given much to our club over they years and miss them. We also sympathize with those of you who are fighting this years contagion. As of this writing, our treasurer and editor are among those suffering it's onslaught. The Center for Disease Control reports that the designation "B" in the flu strain, "Asian type B" stands for "BAD".

FRED B. HOLBERT



Sunshine Corner

**Birthstone
AMETHYST**

January 28ths
 swap and meeting
 mark the start of
 a new year for
 the LGMC.
 Best Wishes to
 the new officers.



Best Wishes
 Billie Sunbeam

GEM TESTING EQUIPMENT

Some basic gem testing equipment can be built with minimum investment or work shop skills. One of these is the polariscope and the other is the dichroscope. Each performs a specific function. The polariscope will help determine whether or not a stone is isotropic, uniaxial, biaxial, or an aggregate. A dichroscope will help determine whether or not a stone is dichroic or trichroic. The March issue will be devoted to gemstones that occur in pegmatites and the dichroscope will be treated in that issue. Our featured gemstone this month will be jade; at the February meeting, we will have a polariscope and will show you the reaction of aggregates in polarized light.

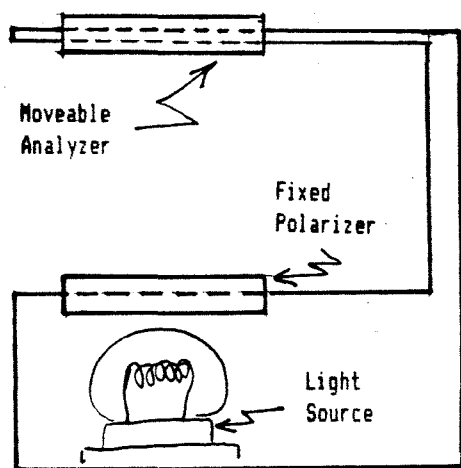


Fig. 1. Polariscopes

Figure 1 shows a cut-away view of a polariscope. It consists of a light source, a fixed polarizer, and a rotating analyzer. The light source can be purchased at an electrical shop or hardware store. The polaroid material for the polarizer and analyzer can be obtained at any scientific supply house, or old polaroid sunglasses that can be found in thrift stores or garage sales will suffice. White light vibrates in numerous planes, whereas polarized light vibrates in a single plane. To use the polariscope, rotate the analyzer until the field is dark. This position is called crossed polarizers or crossed Nicols in older literature.

Figure 2 shows some possible scenes that you might see in the polariscope field. If a gem remains dark as it is rotated in the field, it is isotropic, meaning that it is a glass or has an isometric crystal. If the gem alternately lightens and darkens (goes to extinction) as it is rotated, it belongs to either the tetragonal, hexagonal, orthorhombic, monoclinic, or triclinic crystal systems. If the gem remains light as it is rotated, it is made up of an aggregate of tiny crystals.

Aggregates are materials that are made up of millions of micro-crystals of any system. As the aggregate is rotated in the field, many crystals will go to extinction. In a complete rotation, the extinction position occupies but a small percentage of the circle; hence, aggregates appear light in the field.

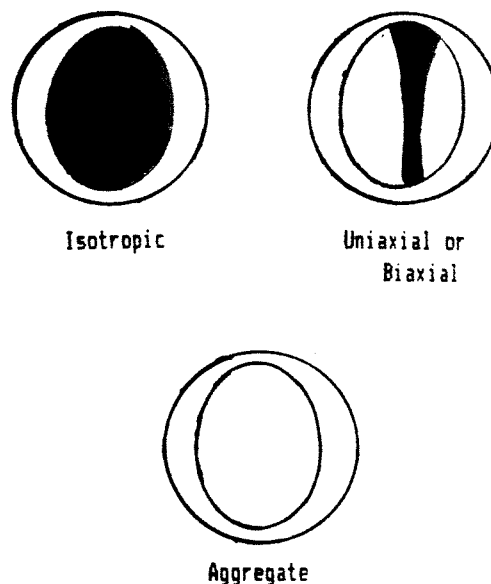


Fig. 2. Polariscopes scenes.

LINCOLN GEM & MINERAL CLUB, INC. - BOARD OF DIRECTORS - Jan. 3, 1989

ISCO Bldg. West 'O' & Sun Valley Blvd. - Mon. 7:30 P.M.

All 9 Board Members present. '88 Board - Jim Parks & Kevin Schwartman

President Holbert opened his first meeting with many new ideas and great enthusiasm.

Minutes of the Dec. Meeting were read with motion for approval by Francis Belohlavy, 2nd by Dave Heffelbower. Carried.

Treasurer's report was read with motion for approval by Roger Pabian, 2nd by Gerald Moore. Carried.

BILLS: Paid but need approval:

\$ 303.31 Bethany Catering (Christmas Dinners)
51.01 Janet Wright - Christmas dinner decorations, etc.
30.00 NAOESCI - Gem Palette

Motion for approval by Shirley Rockel, 2nd by Dave Heffelbower. Carried.

'89 BILLS: Payment & approval:

\$ 26.38 Impressions Ink - 500 copies of fliers for '89 Indoor Swap
6.46 Phyllis Parks - Misc. supplies
6.00 Fred Holbert - Postage Stamps

Motion for approval by Shirley Rockel, 2nd by Francis Belohlavy. Carried.

OLD BUSINESS:

Standing Committees (See inside front cover of Pick & Shovel)

Meetings: Feb. 6 Board Meeting - (1st Mon. at 7:30 - ISCO)
Feb. General Meeting - Scottsbluff Rm.
March General Meeting - March 25th - Norfolk Rm.
April General Meeting - Norfolk Rm.

SCHOLARSHIPS:

Two to be presented at the Feb. Meeting of \$ 150. each.
Ted Huscher - nominated by Vera Lyman, 2nd by Francis Belohlavy
Kevin Schwartman - nominated by Phyllis Parks, 2nd by Dave Heffelbower
(Both by unanimous decision)

COMMITTEE REPORTS: Show:

Committee meeting to be held within 2 wks.

Shirley Rockel reported that Prospector will cater Sat. Night Show supper. Menu basically same as last year.

Programs:

Francis B. had excellent outline for '89. Some changes may be made. Would appreciate suggestions from members. Ideas and speakers needed.

Membership: Gerald Moore will try to follow-up on all leads.

Pick & Shovel: Roger Pabian

Materials and ideas discussed. Will seek articles from people outside the Club regarding many facets of the hobby. Deadline for materials for P & S is 1st of month. Advance time for articles, so they may be placed in special issues.

APPOINTMENTS:

Long Range Planning & By-Laws = With Kevin Schwartman is James Marburger.

'88 Audit Committee - Francis Belohlavy, Don Phillips, Shirley Rockel.

1990 Show Chairman - Roger Pabian

President would like to re-instate Show Budget: more Board control;
book showing duties of each chairperson on Show Committee.

1989 corrected names on account:

Impressions Ink - Phyllis Parks, Roger Pabian, Vera Lyman

FOOD FOR THOUGHT from Pres. -

Sub-groups of LGMC (Lapidary, Fossil, Geology, etc.)

2 summer months would be good time for field trips of unstructured nature.

Respectfully submitted,

Vera Lyman
Vera Lyman, Secretary

LINCOLN GEM & MINERAL CLUB, INC. - GENERAL MEETING - Jan. 28, 1989 7:30 P.M.

NE Center - 33rd & Holdrege - Scottsbluff-Minden Rms
Combined SWAP - Meeting and Anniversary Party (34th)

Meeting called to order promptly at 7:30 by President Holbert; with all Board members present.

Minutes of the November Meeting were approved as printed in P&S with motion by Kevin Schwartzman, 2nd by Tom Simmons. Carried.

Treasurer's report was approved as printed also with motion by John Harrison, 2nd by Francis Belohlavy. Carried.

Hospitality report by Wilma Heffelbower as follows: 32 Adult, 2 Junior & 5 guests.

Guests were: Bill & Betty White, guests of Roger Pabian
Craig, Jayne and Jeremiah TenHulsen, guests of Ruth Krecji

NO OLD BUSINESS

NEW BUSINESS:

Food for thought: President suggested possibility of special interest groups within club; (lapidary, fossil, geology, etc.) Very informal. Perform, study and be involved. Swap materials, education etc.

SCHOLARSHIPS:

Recipients presented with scholarships at Feb. General Meeting.

AUDIT COMMITTEE:

Books are balanced, just need to make report.

SHOW - Chairman, John Harrison

Our "CLUB" Show - Requested that all participate.

Introduced all chairpersons to Club members, then each gave their own report.

Special Feature - Jim Marburger & Kevin Schwartzman

NE material cabachon contest - criteria to be in Pick & Shovel

NE Clubs invited for "CLUB" display. Each club provided with an 8' table for display, promotions, etc. Prizes given for best: \$25.00, \$10.00 & \$5.00.

Ribbons & Recog: Lynn & Marie Wells

Ribbons ordered & certificates ready for print.

Publicity: Roger Pabian

Publicity in numerous locations. Banner will be on display. Chamber of Commerce has taken care of all permits, etc. LES puts up banner (Sun. before Show to Mon. after)

Sapphire Dig: Gerald Moore

Aggregate is here. Check yet to see if its worthy of price, but otherwise ready.

Programs: Lloyd Tanner

Basically all lined up

Sat. Night Supper: Shirley Rockel

Prospector will cater - 3 meats, scalloped potatoes, corn, honeyroll & butter.

Price is \$ 7.50 per person.

Black Light Display: Tom Simmons All ready to go.

Rock Race: Ed Ridge

Needs help to maintain race during show.

Fossil Dig: Don Phillips Needs some help during the show because he will not be able to be there constantly.

Floor: Dave Heffelbower

Little different arrangement than in past to avoid security problems during the Show. Also to keep food out of sales area. Requested displays from each member present at the meeting. Phyllis taking note of number of tables or footage required for each member

- continued

LINCOLN GEM & MINERAL CLUB, INC. - GENERAL MEETING - continued

EDITOR:

Roger Pabian spoke of needs for Pick & Shovel: publishable material; rock-related topics; no travelogs unless rock-related. Outside contributors for articles will be requested by Roger.

Deadline for any material is by General Club Meeting prior to month of publication.

Librarian: Jim Parks

Announced that the volumes on "Beryl" and "Quartz" from the Todd Ashman collection were available at the meeting.

Anyone desiring any materials from the Library can contact Jim and he will be glad to bring it to the meeting.

ANNOUNCEMENTS:

President announced that Jim Taylor is in the UN Medical Center in Omaha. Doing well, but has "days" stay left. He and his family have done great deal for the Club and certainly deserve our support now. For address, please call Vera.

President then thanked Don Phillips and Roger Pabian for swell job on Swap. Thanked Vera Lyman and Phyllis Parks for all their services year after year.

Commented on the great staff of officers and Standing Committee Person for this year. Looks forward to progress and success for the Club.

Programs are very important - build interest in Club and nurture our growth. If you have any special programs you would like to see or things to do, please contact Francis Bleohlavy, our Program Chairperson.

Francis announced that for Feb. the program will be a video on "Agate and Amethyst Mining In Brazil".

CHET AGER:

Roger announced that we will be participating at Chet Ager Nature Center in Pioneer Park on February 19, 1-5 P.M. (Sunday). Rock, Mineral and Fossil displays and demonstrations are needed. Set-up will begin at noon.

PROGRAM:

As usual, Roger presented another interesting program on Agates. As with many things, new knowledge is continuously gained. This was a new look at the origins of Agates. It was entitled, "Chaos, fractals and another look at origins of Agates".

Thanks again for another outstanding program, Roger.

34th ANNIVERSARY!

In January of each year, LGMC observes another anniversary. This year was no exception. Anniversary Cake and coffee was served at the close of the business meeting and program.

Some delicious Fruitcake was also enjoyed, compliments of Bill & Betty White. Thanks much.

Respectfully submitted,

Vera Lyman

Vera Lyman, Secretary

JADE

Of all of the minerals that people have used for ornamental and pragmatic reasons, jade is likely one of the first. Stone artifacts of jade have been utilized by early settlers in Poland and the Eskimos have utilized jade for centuries.

A cursory glance at the literature will show that two minerals are included in what the lapidary calls jade. These are the amphibole, **nephrite**, and the pyroxene, **jadeite**. Except for how these gems react to lapidary treatment, they have little in common in physical and optical properties and each originates in a strikingly different geological environment. The properties of nephrite and jadeite are shown in table 1.

TABLE 1

Physical and optical properties of nephrite and jadeite. From Ford (1958) and Liddicoat (1969).

Property	JADEITE	NEPHRITE
Composition	$\text{NaAl}(\text{SiO}_3)_2$	$\text{CaMg}_5(\text{OH})_2(\text{Si}_4\text{O}_{11})_2$
Crystal	Monoclinic, aggregate	Monoclinic, agg.
Hardness	6 - 6 1/2	6 1/2 - 7
Toughness	Exceptionally tough	Even tougher
Fracture	Granular to splintery	Granular to splintery
Specific Gravity	3.30 - 3.38 Average, 3.34	2.90 - 3.00 Average, 2.95
Transparency	Transparent to opaque	Transparent to opaque
Luster	Vitreous to greasy	Vitreous to greasy
Refractive Index	1.66 - 1.68 1.66 read in refractometer.	1.606-1.632 1.61 read
Optic Sign, Character	Biaxial, (+) Not discernible	Biaxial, (-) Not discernible

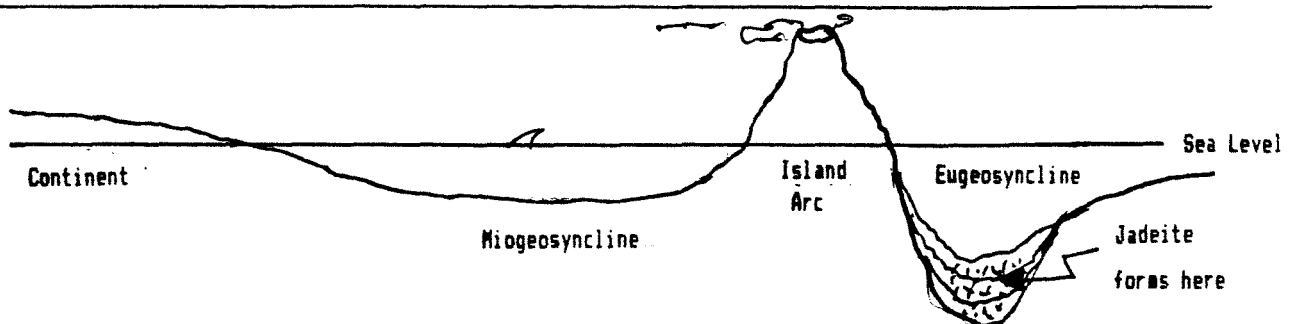


Figure 1. Depositional environment in which jadeite forms. Based on Turner and Verhoogen (1960).

Jadeite forms in what is called the **glaucophane schist facies** in eugeosynclinal deposits that eventually become uplifted to form folded mountain ranges. To one side of the geosyncline, there is a continental land mass (e.g. Asia) and there is an island arc (e.g. Japan). Sediments are shed into the seaward side of the geosyncline (the eugeosyncline) and these become metamorphosed during uplift. The temperatures are fairly low (300 - 400 deg. C) but pressures are extremely high. Jadeite deposits so formed occur in California and Burma.

Nephrite forms in either the high end of the **greenschist facies** or in the low end of the **almandine-amphibolite facies**. These kinds of rocks occur when sediments are metamorphosed during uplift of a block-fault mountain range. The sediments were deposited in water that was much shallower than in the eugeosyncline. Figure 2 shows where one might expect to find nephrite. In the United States, nephrite has been found extensively in Wyoming.

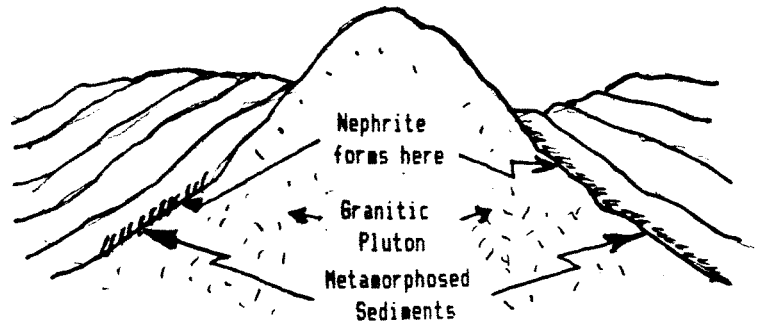


Fig. 2. Environments in which nephrite forms.

Selecting jadeite or nephrite for lapidary purposes can be somewhat of an art. Both will undercut and create an **orange-peel** effect on your stones. This can be rather distracting and it will often show up under very high polishes. My own experience has shown that slabs of both nephrite and jadeite that are most suitable for lapidary work often have frosty lusters. This may be due to the fact that the crystals are very small and do not readily reflect light.

Jade may come in almost any color. Highly translucent, emerald green jade is probably the most desirable and a flawless cabochon of this kind of material may command a price of \$15,000 dollars, but such pieces are extremely rare. Many American lapidaries prefer the "**apple green**" nephrite that comes from Wyoming; high quality rough of this material may cost \$100 or more per square inch. Smoothness of polish and texture of jades is probably more important than color for determining prices. If all things are equal, a fine emerald green stone should be worth more than a fine olive green stone, but a fine olive green stone should command a higher premium than a mediocre emerald green.

Roger K. Pabian

REFERENCES

- Ford, W. E., 1958. Dana's Textbook of Mineralogy. John Wylie & Sons, 851pp.
 Liddicoat, R. T., Jr., 1969. Handbook of Gem Identification. Gemological Institute of America, Los Angeles, 430pp.
 Turner, F. J., and J. Verhoogen, 1956. Igneous and metamorphic petrology. McGraw Hill Book Co., New York, 694pp.

Display cases and a polariscope will be available at the meeting. Bring jade and any material you would like to look at through the polariscope.

REVIEW & REMINISCENCE

"Serendipity": the gift of finding valuable or agreeable things not sought for.

This dictionary definition directly applies to the subject to be elaborated upon. While perusing a local book store's inventory of holiday sale book offerings, we stumbled upon an interesting book on airbrush techniques. As we turned to take our new find to the checkout counter, our eyes peripherally sent a message to the brain that included the word, Lizzadro. The brain performed it's "fine sort" operation of the memory banks and returned data to the cognitive part of itself that registered, "Ummm, thats the same name as one of our favorite lapidary museums".

We returned our attention to the book display and picked up the book that had caused our distraction. What we held in our hands was titled, "The Lizzadro Collection, Chinese Jades and Other Hard Stone Carvings", by Miriam Anderson Lytle (in collaboration with John S. Lizzadro). This indeed was the book about the same museum as we had recalled. Then serendipity extended it's gracious hand further. Not only was this the same book which had tempted us at \$39.00, but it bore a price tag considerably less than that sum. The final ethereal realm of serendipity-do was reached when we noticed that the reduced price had been further reduced to less than half of the original price - SOLD!

In contemplating the writing of a review of this book, we found it impossible not to recall our past visits to the museum; recall the Nebraska connection; and ponder the difficulty of critiquing a book which consists largely of photographs accompanied by descriptive narrative.

The author is one of twenty-four grandchildren of the museum founder, Joseph F. Lizzadro, and the collaborator is a son. In 1979 Miriam Lytle started the project of cataloging the major carvings in the collection. She spent many years of research and writing to compile this book. Her credentials include a Bachelor of Arts Degree in Anthropology from the University of Miami with studies in Europe and the United States in art history, foreign languages, and anthropology. John S. Lizzadro was the museum director at the time of the publication.

The museum was created by the late Joseph Lizzadro so as to share with others his love for the lapidary arts and to preserve major pieces for the enjoyment of us all. The museum is located in Elmhurst, Illinois. Elmhurst is also famous as the home of the Keebler Bakery. While the Keebler elves were adding animal fat shortening to their cookies and crackers, Joseph was adding mutton fat jade pieces to his collection.

The collection houses far more than the carved pieces shown in this book. Exquisite uncarved bowls, intarsia tableaus, jewelry, and various gem materials are but a few of the types of exhibits displayed. One remembers well the pair of large malachite obelisks once owned by the Russian Czar. Where we are used to seeing pieces of gem grade material in carat weight quantities, exhibited are items of those same materials measured by the pound. It is difficult looking at this marvelous book and not be reminded of our last visit there. It was raining frightfully hard as we tried to coax our reluctance automobile engine into life for our return trip home. That complication seemed trivial compared to the majesty of the collection which had just been viewed.

The book recites a bit of history of the museum and the Lizzadro family and notes some of the history of hard stone carving in the orient as well as some basic mineralogy of the two types of jade. Included is a preface by Paul E. Desautels, the former Curator of the Division of Mineralogy of the Smithsonian Institution. Credits are listed for assistance given from historians, artists, and scholars who are experts in oriental arts and culture. Included in this list was credit given to Floyd Swink of the Morton Arboretum for his interpretation of some of the floral carvings. Morton Arboretum lies "just down the road a piece" from Elmhurst and was founded by a descendant of J. Sterling Morton of Nebraska City, Nebraska.

One of the more interesting aspects of the book is that some of the carved pieces can be traced to the very stone from which they were derived. In one instance, a 728 pound jade boulder was discovered in the Arctic Circle area in 1947. There are pictures showing the journey of the piece out of the wilderness to Chicago where it was slabbed by a tombstone cutter. Two 75 pound pieces were sent to china in 1948 for carving but were returned two years later uncarved. Finally in 1963, Mr. T.C. Chang worked two years carving two vases from the jade rough using traditional techniques. He is pictured working on a wooden, foot treadle stone cutting machine. When asked why he eschewed modern tools, his reply was endearing:

"The old tools are best because they permit you to use your whole body, Feet to regulate the cutter, Ears to hear the stone as it is cut, Hands to hold it, Eyes and Heart to seek out and hold the design in the stone."

Historic interest is also evident in a bowl and two covered vases carved in deep apple green nephrite from the "Liu's Jade". The intensely colored and flawless jade rough was part of the Russian Treasury when the communists gained control of the government. This jade was sold in Peking and some of it was purchased by Mr. Celestian Liu.

At risk of boring the reader, we are compelled to list some of the pieces to which we are particularly drawn:

An vase of bright orange, brownish-green, and emerald green jadeite deeply carved depicting flora and fauna as distinctly colored figures.

A figure of Guanyin (the Chinese Goddess of Mercy) carved from one piece of jadeite in pale translucent lavender standing in a grove of brown-orange bamboo.

The Imperial Screen consisting of ten panels measuring overall 12.5 feet wide by 83 inches high. The panels are framed in rosewood and consist of cinnabar lacquered screens with scenic motifs constructed of jade, amber, ivory, coral and semi-precious stones.

An exquisite highly polished ornamental bottle with a fitted lid of deeply undercut foliage and flowers cut from a single piece of rock crystal.

A charming smooth finished, three footed teapot with fitted lid and carved handle cut from a single agate boulder. The apparent quality of the agate is less than equal to chunks which we have discarded. But the true artist can turn commonness into disarming beauty with graceful and flowing form.

A superb carved Moghul covered vase of translucent white nephrite with 1/16 inch thick walls which transmit light. It has deep relief flowers and leaves with free swinging rings from the handles. The Moghul style of carving pleases our taste in that it is very representational and not so highly stylized as with much of the traditional oriental carvings.

A delicate covered bowl of Moghul carved translucent white and emerald green jade with fragile pedals the chrysanthemums set with cabochon cut rubies and sapphires.

A covered bowl of mutton fat nephrite with a pierced filigree pattern and peonies, chrysanthemums, and lotus blossoms extended in deep relief.

"The Doctors Lady" which is a softly depicted nude woman reclining on a cushion which rests on a carved mat and bed of wood. This was a device used by doctors to diagnose the ailments of women. Chinese cultural prohibited the doctor from touching the female body, so the patient would indicate the area of physical distress by pointing to the appropriate spot on the jade figure.

Several hanging vessels or bottles. These are of mutton fat jade with lengths of chain links suspended from a carved jade crossbar and supporting a carved bottle. Each assembly was cut from a single piece of rough and was itself suspended from lovely carved wooden rack and stand.

There are many other items such as bowls, vases, figures, belt buckles, dishes, seals, scabbard fittings, animal motifs, plaques, pendants, scepters, prayer devices, a resonant stone, covered vessels, an incense burner, candlesticks, a brushpot & washer, boulder carvings hewn from jade and several hard stones. Many of the exhibits stand on beautiful carved wooden stands.

The book was compiled to celebrate the twentieth anniversary of the opening of the museum. The mission of the museum as stated by John S. Lizzadro, director, is "to share with others our enjoyment of the eternal beauty in gem stones and our appreciation of the art with which man has complemented the work of nature"; and so apparently was the goal of this fine book. The photography is magnificent as well as the true color rendition. The fine detail of the photos showed the ultimate in stone cutting craft and artistry in both form and the use of material. This was obviously a labor of love and we loved what she labored so long over. The book filled the visual senses. The only thing left wanting was the warm touch of the smooth stone itself. One should peruse the book before a trip to the Lizzadro and then again after so as to fully appreciate the experience.

And finally, the Nebraska connection. I ultimately found out what caused the car problem after my last visit to the museum (you know, a short piece down the road from the Morton Arboretum). It was a faulty starter. Where, might you ask, did the starter finally fail? ... At Arbor Lodge, the former home of J. Sterling Morton in Nebraska City.

Fred B. Holbert

LGMC Juniors

The Junior Meeting this month will be at 7 PM. We will be learning how to make specimen trays. Each Junior will be asked to make a display using material from their collections. These will be set up on March 16th for the LGMC ANNUAL SHOW which will be on the 17th and 18th (Saturday and Sunday). The Juniors will have an area of their own where we will sell chalcedony roses collected from near Chadron and donated to the Juniors by Doc. Gibson. If you have taken the lapidary class please bring your cabochons, we will have a special case for displaying them. We will also sell old issues of the Lapidary Journal. As a service to new collectors, we will teach them how to make their own specimen trays. As you can see we have plenty of things for you to do at the up coming show. So plan to spend a large part of the weekend helping at the Junior Booth.

FROM THE JUNIORS,

WE WANT TO THANK EVERYONE WHO HAS DONATED ROCKS TO US WE APPRECIATE THEM TO KEEP OUR COLLECTIONS GROWING. THANKS TOM SIMMONS FOR LETTING US COME TO YOUR SHOP AND SEE YOUR BEAUTIFUL COLLECTION. I THINK THAT MOST OF US LIKED YOUR FLUORESCENT DISPLAY THE MOST. IN MY OPINION IT IS AS GOOD OR EVEN BETTER THAN THE MUSEUM.

Sincerely,
Reagan Wright
LGMC Juniors



Everett Lapidary Shop

THE CAPITOL CITY'S FIRST ROCK SHOP

2941 North 65th • Lincoln, Nebraska 68507 • Phone: (402) 466-6204

1/10/89

HI GANG:

WELL IT NIVE DOWN HERE TODAY. IN FACT I JUST GOT OUT OF THE SWINING POOL. COURSE IT IS IN SIDE & HEATED.

WE HAD A GOOD TRIP DOWN AS WE WENT OVER TO O'R DAUGHTER'S PLACE IN MISSISSIPPI FOR A FEW DAYS. WHILE THERE WE DROVE UP TO CHATTANOOGA TENN. & VISTED THE CIVIL WAR BATTLE SITE THERE. UP ON TOP OF "LOOKOUT MOUNTAIN" WE STOPPED IN A CURIO SHOP & I TOLD THE GAI THERE, "I KNOW WHY THEY FOUGHT SO HARD FOR THIS M'T." SHE SAID WH"???" I BAID FOR THEM PARKING METERS OUT THERE. THEY CHARGE 25 CENTS FOR 15 MINUTES OF PARKING & THAT IS \$1.00 PER HOUR.

THEN AS WE LEFT MISSISSIPPI WE GOT HIT IN THE RIGHT BACK SIDE OF OUR VAN BY AN 18 WHEELER TRUCK..IT DID A LOT OF DAMAGE BUT THANK THE GOOD LORD WE WAS NOT HURT..OR AT LEAST NOT PAD. LOIS HAS A LITTLE KINK IN HER BACK BUT IT IS GETTING BETTER. WE GOT TO TEXAS TH E 6th OF DEC. HAD A REAL NICE CHRISTMAS AT THE COURT HERE AND A LOT OF FUN. ALSO WE JUST STAYED IN OUR CORUT ON NEWS YEARS EVE TO.

WELL WE JUST FINISHED THE PHARR TEXAS SHOW. I WAS A GOOD ONE AND THERE WAS A LOT OF FOIKS THAT CAME THRU. WE SFEN VERN & MARGE LIVINGSTON FROM NEBR. CITY...ALSO ELMIN TRUMP & HIS WIFE FROM WYMORE NEB R. THEN ALSO DON & MAUDIE GLESS FROM FREMONT STOWED THERE, THEY LIKE TO HAVE DON BRING ALONG HIS BIG DINNY BONES & TEETH TO SHOW.

THIS WEEK END WE WILL BE IN HARRINGEN TEX. FOR THERE SHOW. IT IS ALWAYS A GOOD ONE TO. THEN WE HAVE ONE MORE UP INTO THE MIDDLE OF TEXAS AT , STEPHENSVILLE TEX. IT IS IN MARCH.

AS YET WE HAVE NOT GOT OUT TO DO ANY ROCK HUNTING.....BEEN OH SO BUSY...

HEY WRITE TO US ANYTIME.
TUGS & STUFF
"EV" & LOIS

Dear Marie Taylor and the LGAC,
I would like to thank you for the Lincoln Gem + Mineral Club Scholarship. I am nearing the end of my thesis research and will soon have binding costs and other expenditures. It means a lot to me to receive this scholarship, not only because of my membership in the club, but also friendship with its members. I am proud to accept this honor.

Sincerely,
Lewis J. Schmittner

Dear Friends;

Just a note to let you all know I am still around and would like to be reinstated into the Lincoln Gem & Mineral Club. You have my sincere apologies for not getting my dues there sooner but alot has been happening. I very much enjoy getting the pick & shovel. Just incase some of you all think that the LGM&MC is a nice convenience let me clue you in quick. The largest show in Oregon (other than the Row-wow in Madras-Prineville) the Portland show is not as large as the one that you all hold. There was more than a little disappointment when I went to the Coos-Bay, northbend show and found a show that was nice but small, in all regards. and that's a town of 25,000 people combined. The area is nice, the people questionable and the economy likewise, but Scott & I are getting along and making it. Scott's attending school but don't like it much something about all of the town (5,000 people if there lucky) being rednecks. Kids?!! I just got sargent in charge of security at the seaport shipyards and am looking forward to a continued good thing there. The rockshowing seems to be

at least interesting even here on the Coast. I got a choice of orange beach agate at the beach or a type of red jasper similar to Cove Creek Jasper at the gravel pit plus some fossil material called Coos Conglomerate. all in all not to bad.

I hope all of you are doing fine. I hope you have a great show. I had hopes of being back in february but now won't be in Lincoln till June.

You all take care and I'll try an see some or as many as I can in June.

Your friend
Ronald L. McColony

Lincoln Gem and Mineral Club, Inc.

P. O. Box 5342

Lincoln, Nebraska 68505

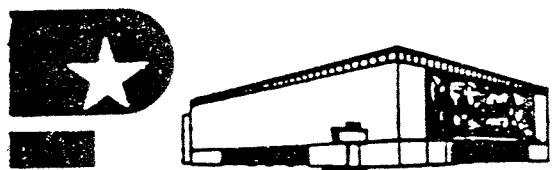


Invites you to attend its

Big 31st Annual

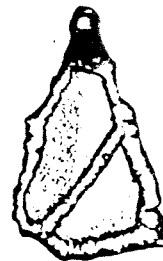
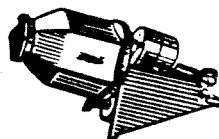
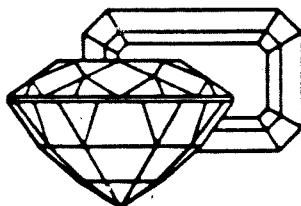
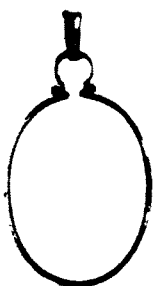
Gem & Mineral Show

MARCH 18, 19, 1989



Pershing Auditorium

226 CENTENNIAL MALL SOUTH



**TUMBLERS-DEALERS-PROGRAMS-JASPER-ROUGH-
AGATE-JADE-FOSSILS-MINERALS-SAWS-**

MIDWEST FEDERATION OF MINERALOGICAL AND GEOLOGICAL SOCIETIES

Member of The American Federation of Mineralogical Societies

NEWSLETTER



Published monthly
Except
June, July, August

JANUARY 1989 - Issue 284

Judith Washburn, Ed.
107 Deer Creek Road
Rochester, IL 62563

American Federation
of
Mineralogical Societies



American Federation Scholarship

Is there an earth science professional who has given a great deal of time and energy to helping your club members? You should seriously consider nominating that person as the Midwest Federation Scholarship Honoree for 1989. The Scholarship Honoree is chosen on the basis of his/her achievements and contributions in geology, paleontology, mineralogy, archaeology, or lapidary arts. The Honoree, in turn, selects two students pursuing graduate degrees in some area of the earth sciences. Each student selected in 1989 will receive a scholarship of \$2,500.

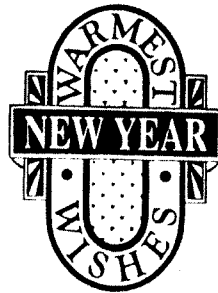
Send letters of nomination for 1989 to Glen R. Hanning, First Vice-President MWF RR#1, Box 63
Huntsville, IL 62344

You should include a resume of the nominee's achievements. You may wish to include other letters supporting the nomination.

Nominations for the 1989 MWF Scholarship Honoree will be accepted until January 15, 1989.

Nominations received after the deadline, will be held over for consideration next year.

Thanks, Ellen



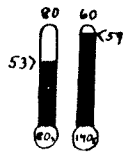
CAROUSEL BANK APPROACHES GOAL

WITH RECENT DONATIONS WE ARE CLOSE TO OUR GOAL OF HAVING A CAROUSEL FOR EACH PROGRAM IN THE LIBRARY.

EACH CAROUSEL WILL SHOW IT'S DONOR'S NAME AND A LIST OF DONORS WILL BE PUBLISHED WHEN THE GOAL IS REACHED.

ANY 'EXCESS' OF CASH OR CAROUSELS WILL BE HELD IN RESERVE FOR NEW PROGRAMS.

SEND DONATIONS TO:
MWF PROGRAM LIBRARY, c/o 3490 S. HANNAN CANTON, IL 61818.



Editor's Note



You've all heard of Murphy's Law. Well, there must be an equally depressing "Editor's Law." It must go something like this . . . "If an editor's typewriter is going to break down, it will - right before a deadline." (At Christmas time when everyone but you has slowed down, when everyone but you is gone for the holidays and you can't borrow one, when a snowstorm cancels everything but your deadline!)

Keep smiling, it's a new year with new challenges around every corner. It's time to clean up and catalog the specimens you collected last year and clean up and organize your gear for the upcoming season. It's time to make some New Year's Resolutions:

- I resolve to come up with a program idea for my club's program chairperson.
- I resolve to give my club's bulletin editor one article for the bulletin this year.
- I resolve to bring one prospective new member to a club meeting.
- I resolve to make up a new exhibit for the club's show and retire the old one.
- I resolve to make it to the MWF Show in Kalamazoo this summer.

Most of all - I resolve to make this the best rock-hounding year ever.

Tip for Editors - From The Opal
West Suburban Lapidary Club
Elmhurst, IL

Editor Gloria Strickert spiced up her December issue with splashes of color. Christmas graphics in red on several pages really added some holiday cheer. This adds more to the printing budget - but if you save this technique for a special issue and use it sparingly on only a few pages, it could be worth the additional cost. It certainly made The Opal firey! Nice touch, Gloria!

(Editor Ed Benjamin of the Arrowhead News wrote and said he would be willing to share his technique of touching up photos so they can be used in club bulletins. Drop me a line and I'll hook you up with Editor Ed.)

BULLETIN BROWSING

I noticed in reading through my exchange bulletins, that we are losing two, award-winning local editors. Hanging up their editors' hats are Nellie Claxton, of the Southern Illinois Earth Science Club News, Cartersville, IL, and Chic Cibacek, of the Loop Scoop, Columbus, NE. We'll miss hearing from these folks on a regular basis. Hope they both keep writing - we need to see some of Chic's great poetry now and again!

Program News -



ATTENTION: PROGRAM PLANNERS

A REDUCED RENTAL FEE OF ONLY \$3.00 WILL BE CHARGED FOR THE PROGRAM "WELCOME TO OREGON" (PUT TOGETHER AS A PROMOTION FOR THE 1989 A.F.M.S. SHOW TO BE HELD IN PORTLAND, OREGON IN JUNE). THE PROGRAM COULD BE SUBTITLED "101 REASONS TO VISIT OREGON". (ABOUT 30 MINUTES LONG - 140 SLIDES - TAPED NARRATION AVAILABLE)

THE REDUCED FEE IS POSSIBLE BECAUSE THIS PROGRAM WILL NOT BE A PERMANENT ADDITION TO OUR LIBRARY - HENCE NO EXPENSES.

DIRECTIONS FOR ORDERING PROGRAMS CAN BE FOUND IN THE MWF DIRECTORY ON PAGE W-10 ALONG WITH THE LIST OF PROGRAMS. (SEE THE OCTOBER AND NOVEMBER NEWSLETTER FOR OUR NEWEST ADDITIONS.)

ARCH NOTES...

INDIAN SITE UNCOVERED IN OHIO

Paul Hooge, director of the Licking County Archaeology and Landmarks Society, announced that two years of excavating by society workers, volunteers and researchers from Ohio State University resulted in the discovery of the earliest undisturbed open-air Indian living site in Ohio.

Because the site was not plowed, it offers the potential for a wealth of information about Paleo-Amerinds. There is about 12,000 years of history at this one spot.

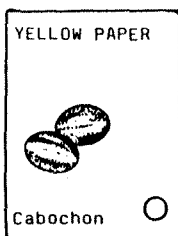
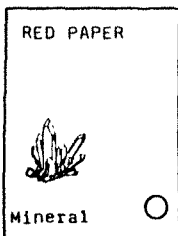
The age of this dig, called "The Pig Site," was fixed by the discovery of a Clovis point. An Archaic culture later occupied the site and most of the pottery and points on the site indicate a Hopewell settlement located here as well.

John Washburn
Archaeology Chairperson

President Dr. Benjamin Moulton R.R. #21, Box 103 erre Haute, IN 47902 812-274-3870	First Vice President Mr. Glen R. Hanning Rte. 1 Huntsville, IL 62344 217-667-2285	Second Vice President Mrs. Margaret Hetnek Rt. 3, Box 370E New Carlisle, IN 46552 219-654-3673	Secretary Miss Jean Reynolds 107 Tuttle Ave. Clarendon Hills, IL 60514 312-323-1682	Treasurer Mrs. Kitty Starbuck 7636 V Avenue East Vicksburg, MI 49097 616-649-1991
--	---	--	---	---

Winter

Field Trip



Depending on how many things you have, choose as many different colors of paper that you will need.

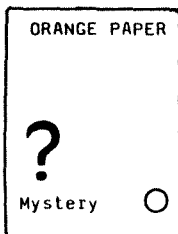
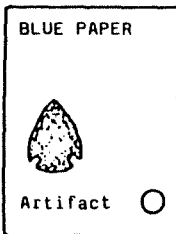
Place one item on each color of paper.

Punch a circle with a paper punch (the smaller they are, the harder they are to find).

Hide the circles around the room (using scotch tape).

At the signal, members start hunting for the circles. If they find a red circle, they get whatever is on the red paper, green circle, what is on the green paper, and so on.

Limit . . . one circle each.



Submitted by
Kitty Starbuck



BLM WINS NATIONAL WILDLIFE FEDERATION LAWSUIT

The favorable resolution of a 3 year old lawsuit against the BLM by the National Wildlife Federation will allow the BLM to once again carry out multiple use management on the 180 million acres of public lands affected by the legal action. The BLM is responsible for the balanced management of approximately 272 million acres of public land and their resources in the 11 western states plus Alaska. US District Judge John Pratt said the NWF had failed to show that it was injured by BLM lifting outdated restrictions and therefore had no basis for filing the lawsuit.

ENVIRONMENT/LEGISLATION COMMITTEE

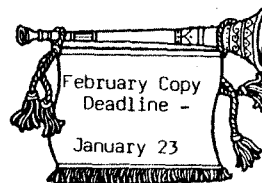
*
YOUR
DUES
ARE
Past DUE!



You should have received the forms to fill out and send in with your dues. If you did not receive them, please contact Jean Reynolds, 107 Tuttle Avenue, Clarendon Hills, IL 60514. She will be happy to send the necessary paperwork out to you.

Dues were due by December 31, 1988. Please send them in AS SOON AS POSSIBLE!!

Kitty
Kitty Starbuck
Treasurer



MIDWEST FEDERATION NEWSLETTER
Judith Washburn, Ed.
107 Dear Creek Road
Rochester, Illinois 62563

NON-PROFIT ORG.
U.S. POSTAGE
PAID
PERMIT #10
Rochester, IL



Deliver to:

Roger Pabian
315 O. St.
Lincoln, NE 68502

PATRONIZE YOUR ADVERTISING DEALERS

COMING NEXT MONTH

Pegmatites

Nebraska Field Trip

J J & L
ROCKS & MINERALS

"Supplies for the novice to the discriminating Rock Hound"

(402) 792-2337

Shop at 330 Locust, Hickman, Ne.

Mail order & Free Catalog, Box 68, Hickman, Ne. 68372

Jim Marburger

John Harrison

CUSTOM CUTTING
FOSSILS

ROUGH
MINERALS
SPECIMENS

CABACHONS
FINDINGS
SLABS

FINISHED JEWELRY
SUPPLIES

Read your bulletin to spot *new materials or specials* of the above advertisers.

Advertising by a rock-hobby business or interest is permitted with approval of the Board, at a rate now set at \$15.00 per full page per insertion, paid in advance. 1/2 page \$7.50, 1/3 page \$5.00 1/4 page \$3.75 (min). These ads will be placed throughout the bulletin as space permits.

Subscriptions to THE PICK & SHOVEL are \$5.00 per year mailed.

Dues to LINCOLN GEM & MINERAL CLUB are as follows:

Adult membership fee \$5.00 (age 16 and over)

Junior membership fee \$1.00 (age 12-16)

Family membership fee \$11.00 (husband, wife and all children under 16 - permanent residents of household)

New membership must be approved by the Board, after applicant attends at least one (1) regular meeting of the club, and pay the above dues plus \$1.00 registration fee.



h.e.l.p.

HELP ELIMINATE LITTER PLEASE!

MAIL ALL EXCHANGE BULLETINS TO:

Lincoln Gem & Mineral Club
BOX 5342
Lincoln, Nebraska 68505-0342



Edward
2507 A st.
Lincoln

Ridge
NE 68502