

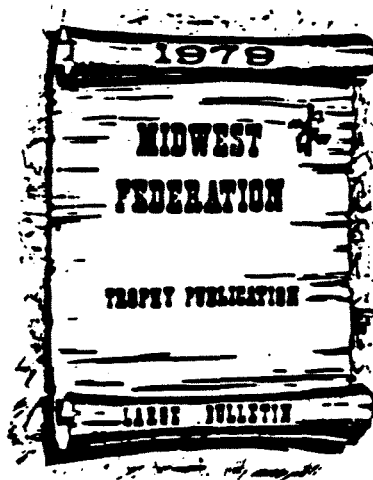
THE PICK & SHOVEL

NOVEMBER 1985



In this issue

. . . MEMBER-abilia=Frank (LEFTY) Rule
FORD MUSEUM and GREENFIELD VILLAGE
"CHRISTMAS PARTY"
Nominating Committee Report



OFFICIAL PUBLICATION OF

Lincoln Gem and Mineral Club, Inc.

P. O. Box 5342

Lincoln, Nebraska 68505

LINCOLN GEM AND MINERAL CLUB, INC.
P.O. BOX 5342, Lincoln, NE. 68505-0342

The purpose of this corporation shall be to study, promote an interest in, and disseminate knowledge of lapidary and various earth sciences including but not necessarily limited to geology, paleontology, and mineralogy. It shall be a particular purpose of the corporation to provide education in these fields to its members and the general public, particularly youth and student groups.

MEMBER: American Federation of Mineralogical Societies (AFMS)
Midwest Federation of Mineralogical and Geological Societies (MWF)
Nebraska Association of Earth Science Clubs, Inc. (NAOESCI)
Nebraska Academy of Sciences (NAS) (Life membership)
Community Arts Council of Lincoln (CAC)

Regular Meetings: 4th Saturday of the month, September thru May: 7:30 P.M.
At Nebraska Center, 33rd & Holdrege

1985 ELECTED OFFICERS:

President	Claude Scott	4917 Normal Blvd.	Lincoln, 68506	488-0739
1st Vice Pres....	Roger Pabian	315 'D' St.	Lincoln, 68502	474-2034
2nd Vice Pres....	Linda Parks	2435 S. 19th St.	Lincoln, 68502	476-6798
Secretary.....	Vera Lyman	420 N. 56th St.	Lincoln, 68504	464-6089
Treasurer.....	Phyllis Parks	2435 S. 19th St.	Lincoln, 68502	476-6798
Board Member....	Mark Mercier	3316 'R' St.	Lincoln, 68502	476-6242
Board Member....	Jim Stewart	1339 Eastridge Dr.	Lincoln, 68510	489-2867
Board Member....	Marie Taylor	910 New Hampshire	Lincoln, 68508	476-3707
Board Member....	Janet Wright	3715 S. 33rd St.	Lincoln, 68508	488-1884

NOMINATING COMMITTEE -- 3 years: Vera Lyman, John Lewis
2 years: Jim Parks, Ervin Marshall
1 year: Richard Haney, Wilfrid Wittmann
Jim Taylor, Chairman

LONG RANGE PLANNING AND BY LAWS COMMITTEE:

1 year - Marie Taylor, Vera Lyman 3 years - Jim Taylor, Irl Everett
2 years - John Abel, Roger Pabian Jim Taylor, Chairman

STANDING COMMITTEE CHAIRPEOPLE:

Calling.....	Phyllis Parks	Membership.....	Linda Parks
	Marie Wells	MWF Liaison.....	Marie Taylor
Education/Publicity...	Roger Pabian	Programs.....	Bob & Mary Walker
Historian.....	John & Lillie Lewis	Scholarships.....	Marie Taylor
Hospitality.....	Susan Taylor	1985 Rockhound/yr...	Roger Pabian
Housing/Property.....	Claude Scott	1985 Annual Show...	Vera Lyman
Junior Activities.....	Janet Wright	1986 Annual Show...	Fred Holbert
Librarian.....	Jim Parks	Christmas Party....	Marie Taylor

AUDITING COMMITTEE 1984.....John Abel, Ervin Marshall
Virginia Green, Phyllis Parks, Treas.

PICK & SHOVEL STAFF:

Editor.....David Heffelbower 1819 Washington, Lincoln, NE 68502
Asst. Editor....Vera Lyman 420 N. 56th St. Lincoln, NE 68504 (NAOESCI)
Sunshine Corner..Susan Taylor
Reporters.....Julius Young, "CLUB MEMBERS"

DEADLINE: 1st of Month of Issue. Original articles may be reprinted if credit is given the author and THE PICK & SHOVEL and a copy of the publication is sent to the Editor.

Calendar of Events

- GENERAL MEETING: Saturday, November 23, 1985 - 7:30 P.M.
Nebraska Center, 33rd. & Holdrege St.
Park North of Building
SPECIAL: Election of officers for 1986
PROGRAM: 1985 diggings in the Jackson
Hole, Wyoming area
- YOUTH MEETING: Same Location - 7:00 P.M.
- DECEMBER GENERAL MEETING: Christmas Party - Saturday, December 7, 1985
Nebraska Centet, 33rd. and Holdrege St.
6:30 P.M. Columbus Room
Gift exchange for those who wish to participate
- SPECIAL NOTE: Members and guests who attend the
Christmas Party must have their
money to Phyllis Parks by December 2, 1985
The amount will be \$6.25 total per person
- DECEMBER BOARD MEETING: Dec. 12, 1985 - 7.30 P.M. at the home
of Bob and Janet Wright, 3715 South 33rd. St.

* * * * *

Since the summer and fall swaps and shows
are over, there are no show to call attention
to, BUT everyone mark your calendar and
start planning for our own LINCOLN GEM AND
MINERAL CLUB SHOW for 1986:
APRIL 5. & 6 - State Fair Grounds

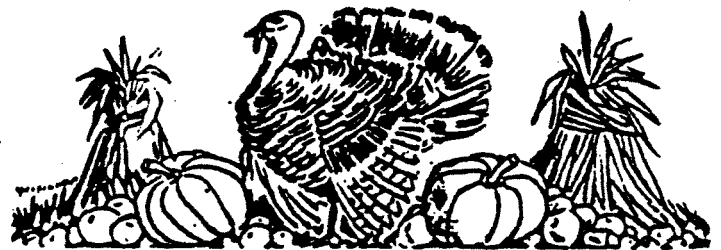
* * * * *

**** REMINDER ****
1986 DUES ARE DUE

GREETINGS AND HOLIDAY WISHES FROM THE SUNSHINE CORNER:

When special people
touch our lives,
then suddenly we see
How beautiful and wonderful
our world can really be.

They bless us
with their joy and love
through everything they give--
When special people
touch our lives,
they teach us how to live.



--Amanda Bradley

A sympathy card was sent to Mrs. Raymond Pfeiffer on behalf of the officers and members of our Club upon learning of the recent passing away of Rev. Raymond Pfeiffer.

A get well card was sent to Tom Simmons who has been hospitalized at Vet's Hospital.

Have a Happy and Blessed Thanksgiving!

Suze Sunshine

* * * * *

Rhubarb Bars (Recipe of Mrs. Irl (Lois) Everett)

3 cups Rhubarb
1½ cup sugar
2 Tbsp cornstarch
½ cup water

Cook till thick

1 cup shortening
1 cup brown sugar
1½ cup flour
½ tsp soda
1½ cup oatmeal
½ cup nuts

} mix together

Pat ¾ of crumb mixture in 9 x 13 pan.

Add Rhubarb mixture.

Put other ¼ crumb mix on top. Bake at 350° for 35 minutes.

PRESIDENT'S MESSAGE

David Heffelbower has determined that he can no longer be editor of the PICK and SHOVEL. I want to take this opportunity to say "thank you" to Dave for the time and effort that he gave while being editor. We do appreciate it.

The elected officers have decided to try a different method to publish the PICK and SHOVEL. Each officer is taking the responsibility of creating a page. We think it will work out fine, but we will need the assistance of every member to supply articles, hints, and tips. Dave will continue to address and mail the bulletin.

Once again our club has been blessed. Some new magazines were sent to our club with the possibility that the articles would introduce junior members and others to our hobby.

Again this year our October general meeting was held at a newly remodeled shelter in Bethany Park. Although we were competing with game six of the World Series (Missouri Series) everyone enjoyed themselves. I don't think it would surprise anyone if the October meeting would be held annually in an "outdoor atmosphere." It was fun. The costumes of the junior members were imaginative.

November 23 is an important general meeting - see you there.

- Claude

**** REMINDER ****

1986 dues are due - pay them to Phyllis Parks.

MEMBER-abilia

The backbone of our club is its members. Lincoln Gem and Mineral Club has enjoyed a healthy thirty plus years starting with the original 4 members to as many at 175 per year. Now membership usually stands at 85 to 110 persons.

As the membership changes adding new enthusiasts and permitting the seniors to retire - as Snow Birds in winter or travelers in summer - we lose our familiar faces and need to recognize and become acquainted with each other all over again.

The Board in plotting our next bulletin (without a named Editor) decided to once again "Spotlight Members." We've selected a person for this issue and we are asking all members to assist by writing about a member that you know well or request a review of someone that you would like to know better. The ball is in your hands, run with it. Contact your Membership Chairperson for more information or just to let us know that you like the idea.



Frank (LEFTY) Rule

Frank and his son Tom joined the club in 1963 and became very active at once. They helped excavate "Pleezy", learned to cut and polish rocks and gems, worked hard for the yearly shows and other club projects, and became very good boosters for the Rockhound Hobby.

Frank permitted his name to be entered for an office in the club, was elected and served until he became President in 1975. In fact I don't believe Frank was given a rest until 1985 when his last term on the nominating committee ended.

During his years as a member of Lincoln Gem & Mineral Club, Inc., Frank has accomplished many things. He placed many fine displays in our annual shows and carried them to other shows in the state; he chaired the workshop at several of our shows with many of his own machines provided to work on; went on numerous field trips with our club, with other rockhounds in the state and in other parts of the country collecting lovely materials for his displays. Frank even started a "Rockshop" in his home to encourage other persons seeking material and help, or just to talk rocks. Frank's ad in the Pick & Shovel always featured 'hot coffee.'

One year Frank was doing some extensive traveling and installed a complete working shop in his pick-up so that he could cut ~~and~~ polish materials when or where he discovered them.

Several times Frank has appeared on T.V. or Cable in his role of dedicated "Rockhound" sharing his knowledge and enjoyment of the hobby.

Frank misses a few meetings and activities now - and we miss him. We hope that he will continue to be with us when he can and especially we hope that he will keep on enjoying the "Rocks and Gems."

-submitted by Phyllis Parks

LINCOLN GEM & MINERAL CLUB, INC. - BOARD OF DIRECTORS - Oct. 3, 1985

The meeting was called to order by Pres. Scott on Oct. 3, 1985, at 7:30 P.M. at American Charter Bldg., 4000 So. 27th Street with 7 Board members and Dave Heffelbower present.

Minutes of the Sept. meeting were read. Motion for approval by Linda Parks, 2nd by Marie Taylor. Motion carried. Treasurer's report was read. Motion for approval by Jim Stewart, 2nd by Janet Wright. Motion carried.

Norfolk Rm at NE Center has been cancelled because we have acquired Shelter at Bethany Park for Oct. meeting.

BILLS: Paid but presented for approval:

- \$ 33.00 Security Storage-Oct.
 - 54.39 UN Printing-Sept. P & S
 - 30.00 Parks & Rec Dept.-Rent of Shelter House, Bethany Park
- Motion for approval by Jim Stewart, 2nd by Marie Taylor. Carried.

OLD BUSINESS:

Board members are trying to find a permanent place to hold Board Meetings. The Nov. meeting will be held at American Charter Bldg. at 40th & South Sts. Nov. 7, at 7:30 P.M.

December Board Meeting will be held at Janet Wright's home on Dec. 12, 7:30 P.M. (3715 South 33rd St.)

NEW BUSINESS:

Dave Heffelbower can no longer edit the Pick & Shovel, so the Board will assume these duties with each officer being responsible for a page. Dave will continue to address and mail the bulletin.

- Pg. 1 Pres. Pg. 5,6 Sec.
 - Pg. 2 Hospitality Pg. 7 Jr. Chrnm
 - Pg. 3 Pres. Message Pg. 8 Library & Exchange
 - Pg. 4 1st Vice Special rpts by Committee Chrnm
- Discussion of special "Thank You" in Pick & Shovel
Also invite Show Chairman to Board Meetings.

Respectfully submitted,

Vera Lyman
Vera Lyman, Secretary

LGMC Treasurer's Report - November 1, 1985 NBC Checking 10/1/85 410.13

Receipts - None

Payments - Lapidary Journal	17.00
Nebraska Center	74.22
Security Storage, Nov.	<u>33.00</u>

124.22

National Bank Commerce Checking Balance October 31, 1985

285.91

LINCOLN GEM & MINERAL CLUB, INC. - GENERAL MEETING - OCT. 26, 1985

The meeting was called to order by Pres. Scott on Oct. 26 at 7:30 P.M. at the Bethany Park Shelter.

There were 31 members and 6 Juniors present. Mrs. Heffelbower was a guest.

Motion for approval of the Sept. minutes as printed by Irl Everett, 2nd by Dave Heffelbower. Motion carried.

Motion for approval of the Treasurer's report as printed by Tom Simmons, 2nd by Richard Miller. Motion carried.

OLD BUSINESS:

Dave Heffelbower has given up the job as Editor of the Pick & Shovel. The Board of Directors will assume the duties with the help of all Club members.

It was reported that Helena Baegl is now at Milder Manor, 20th & Sumner. Could use some company.

NEW BUSINESS:

As Chairman, Jim Taylor reported for the Nominating Committee. At the last meeting, there was no candidate for President. Jim reported that Linda Parks had now agreed to run for Pres. leaving the slate open for 1st Vice. After some discussion, Janet Wright agreed to run for 1st Vice and Kevin Schwartzman for 2nd Vice; thus filling the slate for nominees.

Show Chairman, Fred Holbert had nothing to report on Show at this time.

President announced the display of Latvian jewelry & crafts at 33rd & A Streets, Sun. 12:00 to 3:30 P.M.

Irl announced the Program at the Christmas Party would be on "The Grotto of the Redemption".

Marie Taylor confirmed the Christmas Party date of Dec. 7, 6:30 P.M. Columbus Rm, NE Center. Price of dinner is \$ 6.25. All reservations & money must be to Phyllis by Dec. 2. There will be a gift exchange for those wishing to participate.

Fred Holbert was praised for his fine work in Lincoln Leathercrafters Guild.

Junior members attended the meeting in costumes of different gems & minerals and were awarded prizes.

Several excellent slide programs were presented by Garin Miller. ("Mesa Verde" and "Florida")

The evening ended with everyone enjoying hot cider, coffee and "home baked" goodies.

Respectfully submitted,

Vera Lyman

Vera Lyman, Secretary

FORD MUSEUM and GREENFIELD VILLAGE

This month's topic was suggested by a feature in the Autumn 1985 issue of NATIONAL GEOGRAPHIC TRAVELER pp 50-59. I visited those Michigan places in early 1950's as a delegate from Lincoln Schools to the National Education Association (NEA) meetings. The magazine mentions many interesting items, some of which I remembered, and prompted some experiences of my own to be recalled. Detroit was the convention host.

My appointment as one of several Lincoln Teachers' delegates was due to the fact that I was Lincoln Teachers' Ass'n Treasurer (LTA). (Later we became educators and LTA became LEA, in response to a growing trend.)

An amusing incident occurred during the convention. Several of us were returning from an evening session at the huge Masonic Auditorium to our hotel. We shunned the free bus transportation furnished to delegates, and chose the "invigorating" walking exercise. Our shortest route led through a rather sleazy skidrow district.

A drunken Detroiter suddenly emerged from a dark alley, bowed gracefully, joined our pedestrian group, and with alcohol flavored emphasis repeated several times the following entreaty: "Gaud blesch da teachers!" We realized our new comrade was old-fashioned enough to petition for us as teachers because in his condition he probably could not pronounce the more elegant term.

The convention schedule permitted numerous optional side trips for groups or individuals. I walked to General Motors, and hurried through the Detroit Art Institute. My early farm life and limited cultural experience caused an embarrassing "faux pas" in the great art museum, when casually, I remarked to a full liveried attendant standing near a huge marble tank, "That is a most elegant watering tank." He rose to his impressive, dignified 6'4" stature and chilled me with "That, Sir, is a baptismal font!"

I made no more uncultured comments, passed other officials near the medieval full-armored knights and hastened toward the water front and took a bus to Windsor, Ontario, via the Vehicle Tunnel under the Detroit River. That stream drains the three largest upper Great Lakes (Superior, Michigan and Huron). Windsor, the Canadian City at the end of the tunnel opposite Detroit was still basking in the glow of the new Queen in England.

The greatest side-trip of all was the chartered bus tour to the famed Ford Museum and nearby Greenfield Village in Dearborn, a Detroit suburb. A noon meal and a visit to the Ford factory was included. We were unable to visit much of the enormous plant because of a strike. Ford had once amazed the world by paying workers \$ 5.00 per day. (my 1922 Model T, without extras, cost only \$ 298.00 F.O.B. Detroit.)

- continued

FORD MUSEUM and GREENFIELD VILLAGE - continued

In nearly 35 years I have forgotten many details of my trip, but the National Geographic Traveler reminded me of much of that, and much more has been added. I shall not attempt a detailed account, but will mention a few facts. The Ford Museum covers about 12 acres of ground, and the nearby Greenfield Village spreads over 240 acres; the magnitude of the displays is unbelievable.

Henry Ford, with keen respect for pioneer life, collected countless items depicting domestic, industrial and historical activities; some at great effort and expense. Harvey Firestone's boyhood home was carefully labeled, piece by piece, moved and reassembled at Greenfield Village; a 2,000,000 dollar project. (Something like the moving of the London Bridge from England to Lake Havasu, in Western Arizona a few years ago; and on a lesser scale, Lincoln's folklorist, Roger Welsch, moved a modest log cabin to his Dannebrog, Nebraska ranch. He said it was a lot of work.)

Harvey Firestone, the rubber magnate, Thomas Edison, the great inventor and Henry Ford, whose assembly lines spawned many millions of tin lizzie flivvers, were close friends. Henry was jokingly dubbed "The World's richest living tinsmith". He probably had no trouble finding his way to the bank with the wampum.

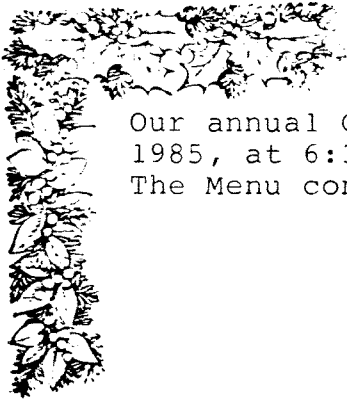
I did not know there was a six-cylinder Ford in the early 1900's, until I saw a reputed one in a Holt County, Nebraska junk pile in 1918. (I was recruiting young high school grads for military training in Student Army Training Corps (S.A.T.C.) at Wayne, Nebraska State College.) I do not remember seeing anything like that in my visit to the Ford Museum. One vivid memory was the display of the chair in which Pres. Abraham Lincoln was assassinated.

Where possible, accuracy and authenticity of display details are enhanced by original persons involved with the articles, or by reliable witnesses engaged to verify the assemblage. Replicas may be used if necessary, but are so indicated. Many replicas of the original incandescent electric lamp have been produced and furnished to schools and individuals.

Important originals are often displayed in minor, less-known places. For example, in 1965 we saw the reputed, original Titus Brothers' Pioneer saddles in a small, unadvertised shop in Beatty, Nevada, near a popular eastern entrance road to Death Valley. Next day we carefully drove down through the historic Titus Canyon, the seldom used, optional entrance road, about 40 miles of which is 1-way only; steep, narrow but scenic. Choose that entrance cautiously, and never in heavy downpour weather.

Don't forget, Nebraska has several wonderful museums and historical displays. Add some to your travel plans.

- Submitted by J.D. Young



"CHRISTMAS PARTY"

Our annual Christmas Party will be held on December 7, 1985, at 6:30 P.M. in the Columbus Room at Nebraska Center. The Menu consists of:

Turkey & Dressing
 Au Gratin Potatoes
 Corn
 Tossed Salad
 Roll & Butter
 Milk, Coffee or Ice Tea
 Apple Pie for dessert

Cost per meal is \$ 6.25 and reservations and money must be in to Phyllis Parks by Dec. 2.

There will be gift exchange for those who wish to participate.

* * * * *

COMMITTEE REPORT:

The Nominating Committee has completed it's work for the year. We have prepared what we feel is an excellent list of candidates to be elected to serve as the officers of the Lincoln Gem and Mineral Club for 1986.

The rest of the job is now up to you the members of the Lincoln Gem and Mineral Club. The annual election of officers will be held during our November meeting. Please be there.

The slate of candidates reads as follows:

President	- Linda Parks
1st Vice President	- Janet Wright
2nd Vice President	- Kevin Schwartman
Secretary	- Vera Lyman
Treasurer	- Phyllis Parks
Board of Directors	- Marie Taylor
	- Fred Holbert
	- Nelia Miller
	- Tom Simmons

Jim Taylor, Chairman
 Nominating Committee

JUNIOR LGMC

The October Meeting was a lot of fun for our Juniors. Brian Taylor and his brother came as the minerals realgar and orpiment. They received trophies for the most creative and most descriptive costumes. Ann Crawford came as magnetite, she had pieces of metal sewn on her black costume. A trophy for most realistic was awarded her for her effort. Garen Miller came as turquoise and because of the trueness to color of his costume he was given a trophy for most colorful. Reagan Wright's costume was a Mexican fire opal. She received a trophy for rarest specimen. Linda Parks and Andrea Wright both dressed as tigereyes. Andrea was given a trophy for prettiest rock. Linda was given the honor of being presented a trophy for the "Rockiest" costume. Adeline Nolte worn funny spectacles and a spider hat, and was given the funniest costume award.

The Juniors will meet at 7 PM just prior to the regular LGMC November Meeting. We will talk about metamorphic rocks. If you have any specimens of **metamorphic rocks** bring them along.

Exchange Page

MUD BALLS TOURIST ATTRACTION...

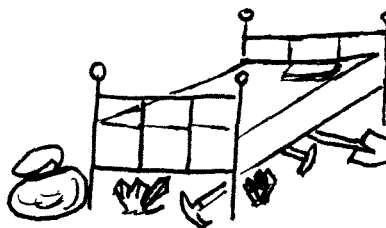
Gill, Mass. has decided to preserve some mud balls. But these are not your ordinary kid-made mud balls.

At a special town meeting, residents voted to save 250 million year old mud balls, which are geological formations caused by mud rolling down a river, gathering little stones and becoming fossilized. They have been found in only eight locations in the world.

The residents voted to preserve an old stone suspension bridge anchor containing the geological formations and set up a committee to promote it as a tourist attraction.

From Cappers Weekly
Via the Loup Scoop

Rocks on the lawn, rocks in the shed,
Shovels and hammers under the bed,
Boots and knapsacks beside the door,
Clay and dirt all over the floor,
Slabs and specimens on the chairs,
Boxes of crystals on the stairs.
A rockhound's home is a disgrace--
But, oh, it's such a happy place.



From Cutting Remarks
Via Old Pueblo Lapidary Club
via The T-Town Rockhound

The following is from the Black Hills Prospector. While the numbers are not the same as the LGMC's, the result is the same. If there's something we can do to improve our meetings for you, please let us know.

WHY AREN'T YOU ATTENDING OUR MEETINGS???

The number of faithful club members who attend regularly is now in the teens! (and we have 48 "area" members plus 6 out-of-state members). WE MISS YOU! We have such good programs and fellowship! It is hard for the officers to keep a club running WITHOUT CLUB MEMBERS PARTICIPATION!!

ON THE GROSSER SIDE:

"Forest Rangers advise that after killing a rattlesnake you make certain that at least its head is buried. Wasps and yellow jackets are meat eaters and, when feasting on the head of a rattler, they may get venom in their system. When they sting someone, enough venom is in the sting to make people very ill and it CAN be fatal."

From the Rollin Rock Club news
Via the Hound's Tale

SHOP HINT: Did you know that if you have sore hands from hard rock mining, soaking your hands in warm vinegar will take the swelling and soreness out.

From GI Nugget

MIDWEST FEDERATION OF MINERALOGICAL AND GEOLOGICAL SOCIETIES

Member of The American Federation of Mineralogical Societies



PRESIDENT

James Edwards
306 Somonauk
Park Forest, IL 60466

312-747-8438

1st. VICE PRESIDENT

Mr. William Parch
P.O. Box 180
Fountain City, WI 54629

608-687-8539

2nd VICE PRESIDENT

Mrs. Ester Mullyaly
30018 Dawson
Garden City, MI 48135

313-427-6790

SECRETARY

Miss Jean Reynolds
107 Tuttle Ave.
Clarendon Hills, IL 60514

312-323-1682

TREASURER

Mrs. Kitty Starbuck
7636 V Ave. East
Vicksburg, MI 49097

616-649-1991

OCTOBER 1985

Pres. Jim Edwards

Dear Friends, Well, Here it is October; Where has the summer gone? Soon it will be November and time for our Fall Meeting in Dearborn, Mi.

If committee chairpeople and assistants cannot be there, be sure to send a report of what is going on with your committee. You should send a report, even if you do not have much to report.

Also, be sure to send in news items of your committee to the Newsletter. Lois Blackburn wants and needs your articles. The November issue should be the issue for Officers and Committee Chairpeople to report on activities. The report can be similar to the one sent to Jean Reynolds for the meeting. The Newsletter is read by all MWF members but not all members get to hear what went on at the meetings or get to read all the reports.

We NEED to COMMUNICATE with our members to let them know what the MWF is doing for them and their clubs.

See you in Dearborn. Everyone is welcome. You do not have to be an officer or committee chairperson to attend, guests are welcome.

Jim Edwards, President, MWF - 1984-1985

(()) (()) (()) (()) (()) (()) (())

This is a very important issue. Please, if you are the President of the Club, or the Liaison for the club and you receive this October issue, hand it to your Editor.

*Be - Alex **

This is the month when it is necessary for the club editor to have the information concerning the Bulletin Contest. To help your own editor to achieve a bit of honor as well as your club--please had the bulletin to them and as you do offer to help in any way you can. The management of the contest is now in the Hands of Lois McMahon with Rita Hagerbaumer as her assistant.

It was decided to help save funds, to send the contest information in the MWF Newsletter. Therefore, it takes your cooperation to see that the information is in the correct hands. Do Not sit on this issue, please. The last pages will instruct the editor/s what is needed to send in the bulletins for the contest. THANK YOU.

*☺☺☺☺☺ *We need more lerts!*

PATRONIZE YOUR ADVERTISING DEALERS

MEXICAN MINERALS - SLABS - TUMBLED STONES

Everett Lapidary Shop

THE CAPITOL CITY'S FIRST ROCK SHOP

2941 North 65th

PHONE 466-6204



AUTHORIZED DEALER FOR ALL LAPIDARY EQUIPMENT

"Satisfied Customers Are Our Best Advertisement"

J J & L ROCKS & MINERALS

"Supplies for the novice to the discriminating Rock Hound"

(402) 792-2337

Shop at 330 Locust, Hickman, Ne.

Mail order & Free Catalog, Box 68, Hickman, Ne. 68372

Jim Marburger

John Harrison

CUSTOM CUTTING
FOSSILS

ROUGH
MINERALS
SPECIMENS

CABACHONS
FINDINGS
SLABS

FINISHED JEWELRY
SUPPLIES

Read your bulletin to spot *new materials* or *specials* of the above advertisers.

Advertising by a rock-hobby business or interest is permitted with approval of the Board, at a rate now set at \$15.00 per full page per insertion, paid in advance. 1/2 page \$7.50, 1/3 page \$5.00 1/4 page \$3.75 (min). These ads will be placed throughout the bulletin as space permits.

Subscriptions to THE PICK & SHOVEL are \$5.00 per year mailed.

Dues to LINCOLN GEM & MINERAL CLUB are as follows:

Adult membership fee \$5.00 (age 16 and over)

Junior membership fee \$1.00 (age 12-16)

Family membership fee \$11.00 (husband, wife and all children under 16 - permanent residents of household)

New membership must be approved by the Board, after applicant attends at least one (1) regular meeting of the club, and pay the above dues plus \$1.00 registration fee.

DON'T FORGET: Reservations for Christmas Party must be in by Dec. 2nd!

Election of 1986 Officers at our November Meeting.
Nov. 23, at 7:30 P.M.

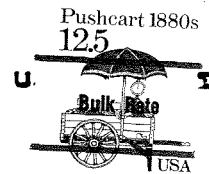
DUES ARE DUE. They will become delinquent on January 30, 1986.



H.E.L.P.

HELP ELIMINATE LITTER PLEASE!

Lincoln Gem & Mineral Club
Box 5342
Lincoln, Nebraska 68505-0342



Editor: David Heffelbower
1819 Washington
Lincoln, NE 68502

Edward Ridge
2507 'A' St.
Lincoln, NE 68502