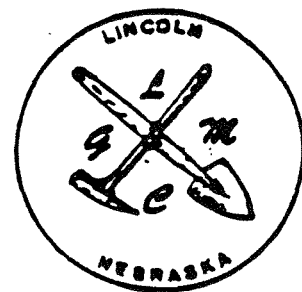
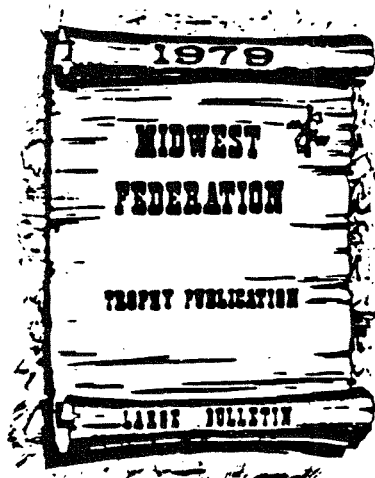


THE PICK & SHOVEL

SEPTEMBER 1985



In this issue



OFFICIAL PUBLICATION OF

Lincoln Gem and Mineral Club, Inc.

P. O. Box 5342

Lincoln, Nebraska 68505

LINCOLN GEM AND MINERAL CLUB, INC.
P.O. BOX 5342, Lincoln, NE. 68505-0342

The purpose of this corporation shall be to study, promote an interest in, and disseminate knowledge of lapidary and various earth sciences including but not necessarily limited to geology, paleontology, and mineralogy. It shall be a particular purpose of the corporation to provide education in these fields to its members and the general public, particularly youth and student groups.

MEMBER: American Federation of Mineralogical Societies (AFMS)
Midwest Federation of Mineralogical and Geological Societies (MWF)
Nebraska Association of Earth Science Clubs, Inc. (NAOESCI)
Nebraska Academy of Sciences (NAS) (Life membership)
Community Arts Council of Lincoln (CAC)

Regular Meetings: 4th Saturday of the month, September thru May: 7:30 P.M.
At Nebraska Center, 33rd & Holdrege

1985 ELECTED OFFICERS:

President	Claude Scott	4917 Normal Blvd.	Lincoln, 68506	488-0739
1st Vice Pres....	Roger Pabian	315 'D' St.	Lincoln, 68502	474-2034
2nd Vice Pres....	Linda Parks	2435 S. 19th St.	Lincoln, 68502	476-6798
Secretary.....	Vera Lyman	420 N. 56th St.	Lincoln, 68504	464-6089
Treasurer.....	Phyllis Parks	2435 S. 19th St.	Lincoln, 68502	476-6798
Board Member....	Mark Mercier	3316 'R' St.	Lincoln, 68502	476-6242
Board Member....	Jim Stewart	1339 Eastridge Dr.	Lincoln, 68510	489-2867
Board Member....	Marie Taylor	910 New Hampshire	Lincoln, 68508	476-3707
Board Member....	Janet Wright	3715 S. 33rd St.	Lincoln, 68508	488-1884

NOMINATING COMMITTEE -- 3 years: Vera Lyman, John Lewis
2 years: Jim Parks, Ervin Marshall
1 year: Richard Haney, Wilfrid Wittmann
Jim Taylor, Chairman

LONG RANGE PLANNING AND BY LAWS COMMITTEE:

1 year - Marie Taylor, Vera Lyman 3 years - Jim Taylor, Irl Everett
2 years - John Abel, Roger Pabian Jim Taylor, Chairman

STANDING COMMITTEE CHAIRPEOPLE:

Calling.....	Phyllis Parks	Membership.....	Linda Parks
	Marie Wells	MWF Liaison.....	Marie Taylor
Education/Publicity...	Roger Pabian	Programs.....	Bob & Mary Walker
Historian.....	John & Lillie Lewis	Scholarships.....	Marie Taylor
Hospitality.....	Susan Taylor	1985 Rockhound/yr...	Roger Pabian
Housing/Property.....	Claude Scott	1985 Annual Show....	Vera Lyman
Junior Activities.....	Janet Wright	1986 Annual Show....	Fred Holbert
Librarian.....	Jim Parks	Christmas Party....	Marie Taylor

AUDITING COMMITTEE 1984.....John Abel, Ervin Marshall
Virginia Green, Phyllis Parks, Treas.

PICK & SHOVEL STAFF:

Editor.....David Heffelbower 1819 Washington, Lincoln, NE 68502
Asst. Editor....Vera Lyman 420 N. 56th St. Lincoln, NE 68504 (NAOESCI)
Sunshine Corner..Susan Taylor
Reporters.....Julius Young, "CLUB MEMBERS"

DEADLINE: 1st of Month of Issue. Original articles may be reprinted if credit is given the author and THE PICK & SHOVEL and a copy of the publication is sent to the Editor.

Calendar of Events

GENERAL MEETING: 7:30 P.M., September 28th, 1985
Nebraska Center, 33rd & Holdrege

Program is "krakatoa" with
intro by Jan Wright

JUNIOR MEETING: 7:00 P.M. Same Location

BOARD MEETING: 7:30 P.M. Oct. 3rd, 1985
Nebraska Hall, Room 115
UNL Campus, 17th & W Sts.

* * * * *	* * * * *	* * * * *	* * * * *
SEPTEMBER 21-22	GRAND ISLAND EARTH SCIENCE CLUB Grand Island, NE	SWAP	
SEPTEMBER 21-22	NEBRASKA MINERAL CLUB Omaha, NE	SHOW	
SEPTEMBER 27-29	PLATTE VALLEY ROCK & MINERAL CLUB North Platte, NE	<u>STATE SHOW</u>	
OCTOBER 19-20	GRAND ISLAND EARTH SCIENCE SOC. Grand Island, NE	SHOW	
OCTOBER 26-27	NORTHEAST NEBRASKA ROCK & MINERAL SOC. Norfolk, NE	SHOW	
OCTOBER 5-6	SIOUXLAND GEM & MINERAL SOCIETY Senior Center, 3rd & Pierce, Sioux City, Iowa	SHOW	
OCTOBER 26-27	"ROLLIN ROCK" CLUB Kansas city Market Center 1775 Universal Avenue, Kansas City, MO	SHOW	

Regional Show Schedule 1985

CALIFORNIA	EASTERN	MIDWEST	NORTHWEST	ROCKY MOUNTAIN	SOUTH CENTRAL
Ventura California July 26-28	Charleston W. Virginia June 20-23	Sioux Falls South Dakota July 18-21	Burley Idaho August 2-4	Denver Colorado Sep. 13-15	Wichita Falls Texas April 5-7

HELLO FROM THE SUNSHINE CORNER:

I still find each day too short
 for all the thoughts I want to think,
 all the walks I want to take,
 all the books I want to read,
 and all the friends I want to see.
The longer I live the more my mind dwells
 upon the beauty and the wonder of the world.

-John Burroughs

"Enjoy" the last hot days of summer-
fall and sinter are around the corner and up the block!

Suze Sunshine

President's Message

The summer months passed much too rapidly. I hope that some of you rock-hounds had an opportunity to take trips and look for rocks.

Our Junior program is growing and getting better all the time. I know that some clubs do not have a Junior program, and when adults learn of a good active program they want to help. Recently the widow of an active member donated a nice amount of unpolished rocks to our Juniors.

A retired school teacher, now living in Carson City, Nevada, brought some specimens to my home and specified that they be given to the Junior program. When she returns to Carson City she has some artifacts for our Juniors. I thin that this kind of support is fantastic.

There are only three meetings remaining in 1985 (December being our club Christmas party.) The programs for September and October have been arranged. I would like to see a good turnout for all the meetings the balance of the year.

See you at The Nebraska Center for Continuing Education!

Claude

NEWS FLASH!

Just before going to press, I received word that Roger Pabian was admitted to Bryan hospital with a ruptured appendix. He will apparently be alright, but is not expected to be very active for a couple of months. We wish him all the best for a good recovery and will give him all the support we can.

The Editor

REPORT ON SPECIAL MEETINGS

In July the club put on a special display and demonstration at the Chet Ager Nature Center at Pioneer's Park. The club was well represented by many interesting and beautiful displays. A working display featured cutting and grinding equipment and was kept busy most of the day.

a steady stream of visitors kept the room full most of the day and many stayed to talk to the club members, watch the demonstrations and take the gemstone and geology quiz offered by the junior members. We made many new friends, got reacquainted with old friends and had some new people sign up as potential members.

After the displays were all taken down, the members adjourned to the park for a very fine picnic that ended at sundown and the coming of swarms of mosquitos.

Our meeting in August was to feature a guest lecturer from California and a swap for Australian gem materials. So much for the best laid plans of men and mice! A large group turned up at the Nebraska Center which included several visitors; but no speaker. That problem was soon remedied by the club members, however.

Bob Fixter gave a very interesting and informative talk on pearls. He explained the various kinds of pearls encountered in the gem trade, the criteria for valuing them and some tips on how to spot the genuine article. Then the Parks showed a film on the Tri-state Minerals. This was a film from the club library on a trip to one of the mines in the old tri-state lead mining area. This film was made by club members many years ago and was outstanding for the beauty of the specimens shown and the quality of the photography. everyone enjoyed what had started out to be a disappointing evening.

The editor

LINCOLN GEM & MINERAL CLUB, INC. - BOARD OF DIRECTORS - May 2, 1985

The meeting was called to order by President Scott on May 2, 1985 at 7:30 P.M. at Richards Hall.

Minutes of the April Meeting were read. The following correction was made. Lois Everett had not served as resident agent since the origin of Club. She begin serving in this capacity in 1975. Francis Tracy was the first resident agent. My apologies for the error.

Motion for acceptance of minutes by Jim Stewart, 2nd by Phyllis Parks. Carried.

Treasurer's report was read. Motion for approval by Marie Taylor, 2nd by Linda Parks. Carried.

CLUB BILLS: For payment & approval:

- \$ 15.99 Who's Who
- 6.15 Board & General Minutes
- 56.45 UN Printing - April Pick & Shovel

Motion for approval by Phyllis Parks, 2nd Marie Taylor, Carried.

Paid but presented for approval:

- \$ 16.00 NAOESCI-Gem Palette (late dues for 16 members)
- 33.00 Security Storage - May

Motion for approval by Vera Lyman, 2nd Marie Taylor, Carried.

SHOW BILL: Paid but presented for approval:

- \$ 313.28 Journal-Star Printing Co.-Display Ad

Motion for approval by Marie Taylor, 2nd Linda Parks. Carried.

OLD BUSINESS:

Question of purchasing a Poloroid Camera to use for Club Functions.

Janet Wright & Roger Pabian to check on types, models and cost.

NEW BUSINESS: Summer activities:

- June 22: Club Picnic in Bethany Park
- July 27: Chet Ager Day & Picnic at Pioneer Park
- Aug. 24: Program - "Hunting Semiprecious Stones in Australia"
by F. E. (Flossie) Sheehan 262 Via Pecoro San Lorenzo, CA
At NE Center, with refreshments 94580

Claude will be contacting her by letter re: date, cost, etc.

Letter from Centrum: Re use of free space in Center Court. Just notify well in advance. Cathie L. McBride, Centrum Marketing Dir.

The Centrum Shopping Plaza
1111 'O' St. Lincoln, NE 68508 475-6354

Columbus Show Chairman invited us to their Show and to display on Aug. 17 & 18. Also stated that Richter's (Dealers) retiring from Show Circuit.

(Janet Wright) Requested we look into change of 1st Thurs. Board Mtgs. at Sept. meeting.

(Linda Parks) Not happy with Badge service. Marie to call Fred Farrar to check if he still makes badges. Linda to check with Page Trophy.

(Phyllis Parks) No slides of '80 Show. Check to see where they are.

MEMBERSHIP:

Wm Taylor & Bryan Taylor(Jr) Bennett, NE Motion for approval of membership upon receipt of \$7. by Janet Wright, 2nd Jim Stewart. Carried.

PROGRAMS:

May - Irl Everett - "Grand Canyon" or "Tri-State Gems"

Nov - Garin Miller - Junior Program presented at Show

Meeting adjourned.

Respectfully submitted,

Vera Lyman

Vera Lyman, Secretary

LINCOLN GEM & MINERAL CLUB, INC. - GENERAL MEETING - May 18, 1985

The meeting was called to order by President Scott on May 18, 1985, 7:30 P.M. at NE Center, Hastings Room.

Minutes of the April Meeting were read. Motion for approval by Roger Pabian, 2nd by David Heffelbower. Carried.

Question of definition for "affiliate" & "contributing" in regard to membership in "Friends of the Museum".

Treasurer's report was read. Motion for approval by David Heffelbower, 2nd by John Lewis. Carried.

HOSPITALITY:

Susan Taylor reported that 34 Adult and 2 Junior members were in attendance. Wm and Bryan Taylor were welcomed as new members.

FINANCE:

Financial reports were handed out to members. President thanked audit committee. Motion by Irl Everett to accept as printed, 2nd by Wilfrid Wittmann. Motion carried by show of hands.

NEW BUSINESS:

Flyers of various Shows and Rock Events for members to pick up.

Complimentary tickets available to Chicagoland Gem & Mineral Assoc. Show next weekend.

Letter read by President from Flossie Sheehan regarding Program for Aug. 24th. Plan to invite other Clubs.

Free space available for non-profit organizations in Centrum Shopping Plaza.

Roger commented on Day at Chet Ager, July 27, 9:00 A.M. to 6:00 P.M. There will be displays, gem cutting and hobby demonstrations, film and slide shows. Picnic at Pioneer at 6:00 P.M. Will put up direction signs. Notification by mail or phone.

THANK YOU from Michael Glaubius who received scholarship through NAS for Photography and collecting gems and minerals.

WHO'S WHO are available. Display cases available at meetings. Feel free to bring materials.

LGMC sending check for \$ 150.00 to MWF Film Library. Check to be sent to Kitty Starbuck. Copies of letter to Louise Stinnett, also Jim Edwards, Pres. One copy of letter on file with Club Secretary.

Meeting adjourned.

An excellent program on "Grand Canyon" presented by Irl Everett. Naration by Irl during the slide presentation helped make the program outstanding. Some of his comments included, "Grand Canyon of Colorado River is overwhelming!" and "To view the canyon from great heights (airplane) is an experience never to be forgotten."

Respectfully submitted,

Vera Lyman

Vera Lyman, Secretary

INCOLN GEM & MINERAL CLUB, INC.

Treasurer's Report - May 1, 1985

National Bank of Commerce Checking 4-1-85 \$ 2,922.59

April Receipts - from '85 Show Raffle 45.00

April Payments -

1985 Show Bills	2,484.22
Apr/May Storage	58.48
Plaque Ne State Case	9.73
Member Subs. Gem Palette	16.00
UNL Printing-Pick & Shovel	56.45
Repair Stapler	56.28
Refreshments-Show Setup	46.34
Ne Academy Scholarship	45.00

\$ 2,772.50

National Bank of Commerce Checking 4-30-85 \$ 195.09

Lincoln Gem & Mineral Club, Inc. Treasurer's Report--September 1, 1985
(Covers May, June, July, and August)

National Bank of Commerce Checking Balance--May 1, 1985 195.09

Receipts:

New member dues & reg.	13.00
Donation LGMC Sch./Ed. Fund	4.00
Transfer from First Fed. Trans.	1000.00
	<u>1017.00</u>

Payments:

Friends of Museum	50.00
MWF Slide Film Library	150.00
Security Storage--June-Sept.	132.00
Nebraska Center--March	49.12
April	57.42
May	54.92
UNL Prtg./Dupl.--April	77.35
May	83.62
Accent Prtg.	5.85
Officer Performance Bond	54.00
Vera Lyman	22.14
Jim Taylor (repair speaker)	44.61
Postmaster (Treas./Memb. Chrp.)	11.40
	<u>792.43</u>

National Bank of Commerce Checking Balance--August 31, 1985 419.66

REPORT ON THE 1985 MWF SHOW

The convention was called to order by President Jim Edwards, with representatives from 40% of the clubs in the federation present. Nebraska was represented by four of our ten affiliated clubs.

The meeting moved along in good order and with few delays. Reports were presented by fifteen of the twentyfive permanent committees. The report of the Convention & Show Committee was somewhat disappointing. No site has been volunteered for the 1988 show. This may hurt plans for that show: however sites for the 1986-87 shows are; South Bend, Indiana, 1986; and Dearborn, Michigan, 1987. Of interest to the delagates was the news that ten of the fifteen awards at the AFMS show were awarded to clubs in the Midwest Federation.

New rules for show competition are being published January 1st. Individual and club entries were up 41% over the previous year. The committee urged greater participation: especially by clubs.

The special committee reports yeilded no surprises. The audit revealed(due to careful scrutiny of the budget) that the federation is in sound financial condition. The Northwest Federation decided instead to raise dues and ended up losing about 40% of their membership!

The Nominating Committee reported out the following slate of officers for the new year: (these were elected later in the day)

President:

Mr. William Parch
P. O. Box 64
Wyeville, Wisconsin 54671

NEIHARDT DAY - Aug. 4, 1985

The Day is set by Governor's Proclamation as the first Sunday in August each year. In 1968 it was Gov. Norbert Tiemann's official duty. The Neihardt Center movement began in early 1965 by Bancroft's devoted Neihardt admirer, Evelyn Vogt, with a fund-raising dinner; so this year marked the 20th anniversary of the Neihardt Restoration Project. Each year's observance has a different Neihardt-related theme. For 1985 it was a quote from one of his epic poems, The Song of Jed Smith, "Nothing Matters But the Driving Force Behind You." (adapted, P. 88 lines 26-27)

That "driving force" (light) over the twenty years has produced wonders at the Neihardt Center in Bancroft. The poet wrote much of his works there in the small shack or "study", later abandoned. It has been restored and it is now listed in the National Register of Historical Places.

The symbolic Sioux Prayer Garden, designed by the poet, and the \$ 200,000.⁰⁰ Memorial Building, financed by act of Nebraska's Legislature, also feature the attractive grounds. The place is now a branch museum of Nebraska Historical Society. Hundreds of individuals, school and other groups visit it, at no admission charge. An annual spring conference is held there.

Displays and programs are rotated, and permanent memorabilia may be seen. The poet's favorite hobby was lapidary. He was an Honorary Life Member of our Lincoln Gem and Mineral Club. His handiwork has been in our two National Shows as well as the 1969 Salt Lake City Show, and local ones. Our Club donated a 700 lb. fossil cycad which graces the center of the circular, multi-level main floor in the Neihardt Center Memorial Hall.

Neihardt Foundation President Marie Vogt presided over this year's program, and the Rev. James Gerken, St. Paul's Lutheran Church, Bancroft, gave the invocation. The speakers included former Nebraska Governor Norbert Tiemann, Dallas, Texas, who proclaimed the first Statewide Neihardt Day in 1968, as previously mentioned. He called attention to Nebraska's lamentable No. 1 rank in "exporting" its educated young people to other states.

Omaha World-Herald staff writer, Tom Allan, told of his bringing Dr. Neihardt back to Bancroft to visit his early 1900's home. Margaret Hasebroock, whose late husband was a State Senator, recalled the legislature's final approval of the \$ 200,000.⁰⁰ appropriation for Neihardt Center Construction. Attorney Hilda Petri, Neihardt's daughter, praised Evelyn Vogt and others for helping to develop the Center.

James A. Hanson, now Nebraska's Historical Society Director, pointed out the necessity of recalling the lessons of the past to promote Nebraska's success. President Marie Vogt mentioned that the 1986 Spring Conference staff at Bancroft is planned to include William Least Heat Moon, author of the best selling book, Blue Highways; Bobbie Bridger, relative of famed frontiersman, Jim Bridger; and Hilda Neihardt Petri.

NEIHARDT DAY - Aug. 4, 1985 - continued

The program traditionally closes with a recording of Dr. Neihardt reciting his translated version of Black Elk's Prayer. As usual the meeting was held under the stately shade trees, some of which the poet planted in the early 1900's. The weather was perfect, and the countryside was never more beautiful with its "Glad green miles of tillage." Attendance was lowered by the competition of other attractions, such as the Burt County Fair at Oakland.

Myrtle and I recall a thrilling return trip to Lincoln after a Neihardt Day, with Doctor Neihardt and his faithful white poodle, Jacquot. We were caught in sudden darkness by a near-tornado just south of Wahoo. We and several other cars sought safety (including a patrol car) off the highway No. 77 in the nearest farm driveway. Soon the power line to the farm landed on our car front. The lights went off in house and yard. A long section of downspout torn from the corner of the house about 100 ft. away crashed against my left front door. The rain poured down in torrents. Visibility was absolutely zero except for frequent lightning flash intervals. A tree fell across a woman's car just in front of ours. Many farm buildings were flattened by the wind and rain. The house stood, but window curtains were whipping outward, revealed by lightning flashes.

The brave, gray-haired poet was not at all worried, and the poodle snuggled on the car floor, asleep; but Myrtle and I "pulled leather" every time the car fluttered off the ground. The great man's hearing and eyesight were both weak and occasionally he would roll down his back door car window to see if rain was still falling, and it WAS!

The fury finally ended and we could see slow traffic had begun on the highway. Marooned cars, like ours, joined the motorcade toward Lincoln, dodging fallen trees and other debris; we avoided a head-on collision with a careless semi by taking to the muddy shoulder.

A Lincoln newspaper later published a feature with photo depicting the damage at that farm home. Obviously the photograph was shot from almost the same spot our car had occupied during that frightening evening.

By rare coincidence that same issue carried the Neihardt Day program story in which the poet was a speaker. He had expressed his ideas concerning death, and his fearless attitude about it. The story headline was "Poet Neihardt not afraid to die".

Some months later we witnessed his quiet death bed scene in his daughter Hilda's home near Columbia, Missouri, and we think he probably knocked without fear at "The Pearly Gates." His ashes were sifted from an airplane over the Missouri River, the favorite stream he chronicled in his The River and I. (1910)

The Omaha Indian Tribe near Bancroft had called him "Little Bull Buffalo", the Sioux named him "Flaming Rainbow".

- Submitted by J. D. Young



.. JUNIORS

We are looking forward to another great year with LGMC Juniors. we will again meet the half hour before the regiar monthly meetings. Junior members bring any of your summer "finds" and we will share what we have done for the summer. Also bring ideas on activities for this coming year or requests of things you would like to learn about.

Hope to see you there!

Jan Wright

ROCKS AND MINERALS

```

V R U M D F D Q O Y Q Y Y C E X A K K Y E
M A R B L E I O Q A B H A T Q P M X I L V
B N O C X I A I W Q G C I V N U J H F R F
I X C A P N M X A U E N T F S H A L E K A
T P V O E B O E J A A L D P B R X R M Y L
L A F L N C N D S R G Q Y O P J N T T Q Z
K J A N J G D J G T I G E R E Y E W E Z M
X G B A S A L T I Z O E O L I L T L L E K
A T H O F R R O Q I D N B L H Y R Z Q L Z
I Z I C F E Y W M T U X E C D G L C E L Q
S Y J N H V C O P E T R I F I E D W O O D
H X O C H N F K N Y R D Q S C C R R M B B
R Y Z N E Y J O I E R A Y F D D W L S H Q
T X H D J V T K P S S I T B E A Z Z F A G
O C C L E S B S M B U Z T E M K I W J B F
C G Z C D U A A Y O Y V G E F H B Y S O J
H Q K N X J K B X L R D C P B X X D G S W
U C A L C I T E K V D V H R G F M Z W C B
I S I L V E R B D G C T Z U S L Z G M Z P
    
```

Can you find these words?

PETRIFIEDWOOD
SANDSTONE
DIAMOND
SILVER
BASALT
MARBLE
SHALE

CONGLOMERATE
LIMESTONE
GRANITE
GYPSUM
JASPER
QUARTZ
GOLD

QUARTZITE
TIGEREYE
CALCITE
PYRITE
GALENA
CHERT

SHOP TIPS

BLEACHING TIGEREYE:

Sometimes you get tigereye that has too much dark brown to become a desirable gemstone. The bleaching process is quite simple, first get some granular oxalic acid from the drugstore. Dissolve one heaping tablespoon to each cup of water. Use a glass, pyrex or earthenware dish. I use my pickle pot; a croquette used in silver soldering. The heat is kept at a constant temperature of about 200 degrees for 12 - 14 hours. This will remove only the dark, thus enhancing any other colors.

Via Deming Rock Chips, Coca Gems
and Tule Smoke Signals

ELECTROPLATING CAUTION:

For those people who are interested in electroforming copper, they should make sure that their copper bath is well isolated from any silver or gold plating solutions. If one drop is combined with the other, a deadly gas is formed (hydrogen cyanide).

From Del Air Bulletin, via
The Pegmatite and American
River Currents

SAFETY TIP:

Using your mouth as a pump when a syphon is used to remove gas from a tank is very dangerous. As the gasoline shortage worsened the nation's hospitals were reporting 15,000 cases a month of people gulping gas-- five times the usual number. Those 15,000 people were worried enough to report to a hospital, and they were not over cautious, because even tiny amounts of gas can be fatally poisonous. Even a teaspoon, if it gets into your lungs can cause chemical pneumonia, which does not respond to antibiotics and can cause lungs to stop functioning abruptly. If you swallow gasoline, vomiting should not be induced because it makes aspiration more likely.

From Osage Hills Gems via the Cycad
And Dinny's Doins

PATRONIZE YOUR ADVERTISING DEALERS

MEXICAN MINERALS - SLABS - TUMBLER STONES

Everett Lapidary Shop

THE CAPITOL CITY'S FIRST ROCK SHOP

2941 North 65th

PHONE 466-6204



AUTHORIZED DEALER FOR ALL LAPIDARY EQUIPMENT

"Satisfied Customers Are Our Best Advertisement"

J J & L ROCKS & MINERALS

"Supplies for the novice to the discriminating Rock Hound"

(402) 792-2337

Shop at 330 Locust, Hickman, Ne.

Mail order & Free Catalog, Box 68, Hickman, Ne. 68372

Jim Marburger

John Harrison

CUSTOM CUTTING
FOSSILS

ROUGH
MINERALS
SPECIMENS

CABACHONS
FINDINGS
SLABS

FINISHED JEWELRY
SUPPLIES

Read your bulletin to spot *new materials* or *specials* of the above advertisers.

Advertising by a rock-hobby business or interest is permitted with approval of the Board, at a rate now set at \$15.00 per full page per insertion, paid in advance. 1/2 page \$7.50, 1/3 page \$5.00 1/4 page \$3.75 (min). These ads will be placed throughout the bulletin as space permits.

Subscriptions to THE PICK & SHOVEL are \$5.00 per year mailed.

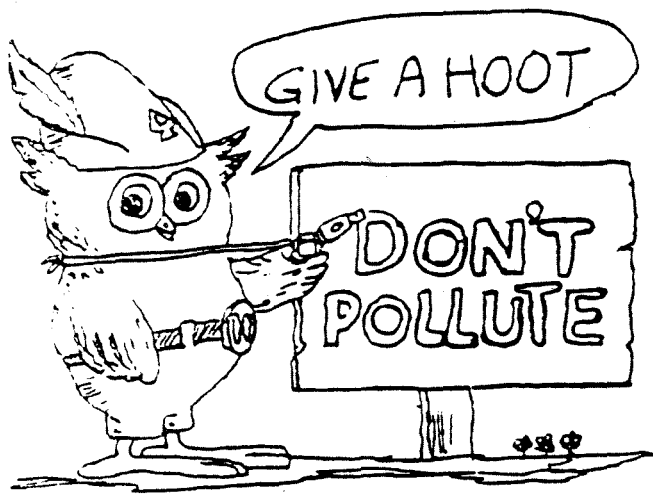
Dues to LINCOLN GEM & MINERAL CLUB are as follows:

Adult membership fee \$5.00 (age 16 and over)

Junior membership fee \$1.00 (age 12-16)

Family membership fee \$11.00 (husband, wife and all children under 16 - permanent residents of household)

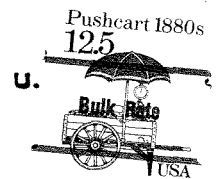
New membership must be approved by the Board, after applicant attends at least one (1) regular meeting of the club, and pay the above dues plus \$1.00 registration fee.



h.e.l.p.

HELP ELIMINATE LITTER PLEASE!

Lincoln Gem & Mineral Club
Box 5342
Lincoln, Nebraska 68505-0342



Editor: David Heffelbower
1819 Washington
Lincoln, NE 68502

Edward Ridge
2507 'A' St.
Lincoln, NE 68502