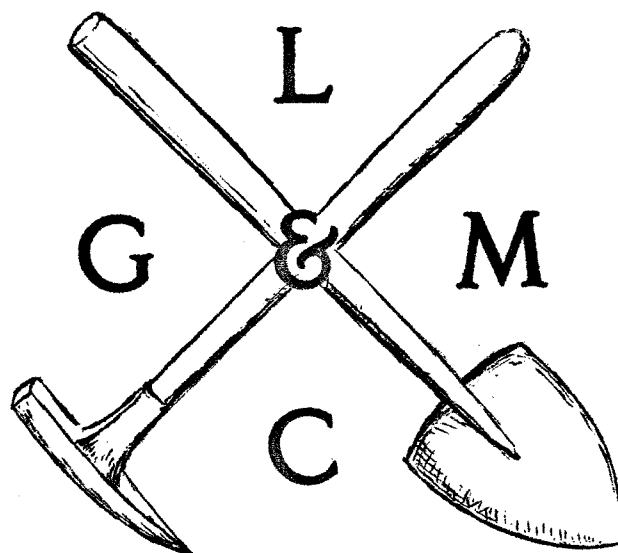


THE PICK & SHOVEL



NOV - 1974

OFFICIAL PUBLICATION OF

LINCOLN GEM & MINERAL CLUB

HOST OF COMBINED

**MWF-AFMS NATIONAL SHOW AND CONVENTION
AND NEBRASKA STATE SHOW**

JUNE 13-16, 1974
LINCOLN, NEBRASKA

CALENDAR

"When snow is here and trees look weird,
And the knuckled twigs are gloved with frost;
O then is the time for a brave refrain."

-Riley



Regular Meeting----Sat., Nov. 23, 1974
7:30 p.m. W.O.W. Bldg.
734 So. 27th Street

Program----The time has arrived for viewing the many fine slides of the National Gem and Mineral Show to select the ones you would like to have duplicated for your own personal collection. A list of the slides by number and title will be available for you to indicate your choice. At current prices, cost of the slides will be 40¢ each, including tax, and will need to be paid at the time of ordering. If you have no viewer or projector, you can have prints made from your slides if you like. Most of these very fine pictures were taken by Tom Rule, official Lincoln Gem and Mineral Club photographer, but several from the Stamp Ceremony were donated by Frank Marsh.

Business---Annual Meeting and Election of Officers.

Refreshments will be served by the Refreshment Committee.

Board of Directors' Meeting---Dec. 5, 1974----Home of Nelda Oliver,
5700 Otoe St.

Change of Address: Glen and Debbie Ulrich, 4609 Bancroft, Apt. 3
Telephone: 489-2538

DATES TO REMEMBER

- Dec. 14, 1974--WOW Hall, 734 So. 27 St., LGMC Christmas Meeting, Dinner
- Apr. 18-20, 1975--Hastings, NE Central Nebraska Rock and Min. Soc. Show, City Auditorium
- June 13-15, 1975--Gering, NE NAOESCI State Show, Nat'l Guard Armory
- June 19-20, 1975--Denver, CO AFMS-RMFS Show and Convention-Currigan Hall
- Aug. 2-3, 1975----Gothenburg, NE NAOESCI State Swap, Lafayette Park
- Oct. 10-12, 1975--Detroit, MI MWF Show and Convention

NOTICE----Word has been received that the Betty Crocker Scholarship Plan will be discontinued after December 1. Coupons will be honored until that date. Scurry up all you can find or beg and bring to the November 23 meeting, so I can mail them on the 26th. If you are not coming to the meeting, mail them to me, or give them to someone who will attend. This is our last chance to help worthy students with educational expenses through the Betty Crocker Scholarship Plan. Please cooperate, and bring your commorative stamps, too.

--Myrtle Young, Scholarship Fund Chairman

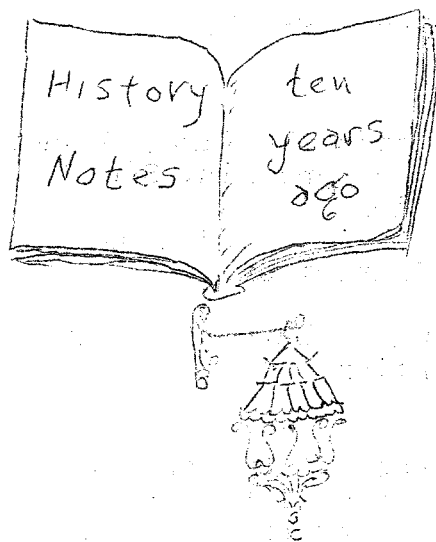
LAST MONTH...There were 57 members and 4 guests present at the October meeting of the LGMC. The guest list included the following: Ed and Vivian Johnson, Clyde L. Van Doren, Richard Langley, and our guest speaker, Dr. Robert Nelson.

A lot of business was transacted at this meeting. A committee was set up to make a study of the status of dues. Glen and Flossie Litzenberg were announced as chairmen of the 1975 LGMC Show. A committee of six was nominated, and approved, to make a feasibility study of the possibility of hosting a national show in 1980. The members of this committee are: Tom Simmons, Phyllis Parks, Evelyn Ulrich, Frank Rule, Ralph Ulrich, and Howard Taylor. Phyllis Parks, chairman of the Nominating Committee, presented the slate of candidates for the 1975 Board of Directors. The voting procedure initiated last year will be used for the election of officers to be held at the November meeting. The Club voted in favor of having a semi-potluck dinner for the December 14 Christmas party and gift exchange. The Club will furnish the meat and drink.

A most interesting and informative lecture was given by Dr. Robert Nelson of the University of Nebraska Geology Department. His subject was: "Crystal Systems--How We Use Them for Mineral Identification and How Crystals Are Formed." The use of slides, models, and a crystal display showing the characteristics of the various systems, made the talk very useful to those who wished to learn more about this very fascinating subject. A movie, "Rocks That Form Under Ground", was shown after Dr. Nelson's talk.

The Youngs announced that Florence Boring and they will hold Open House at the Young residence Nov. 3, at 2-5 p.m. in commemoration of Dr. Neihardt's "great adventure", as he referred to his passing.

Refreshments were served by Rosa Lee Wright, Marie Taylor, Glenna McGinnis, and Evelyn Ulrich.



Field trip chairman, Gene Eno, reported that "Plesy" was now out of the ground. The members that worked on removing "Plesy will not forget this experience....Members voted to prepare educational cases for Scout groups and fossil cases for schools, Roger Pabian, Chairman..... Helen Baegl presented interesting slides of her trips, club picnics and shows...56 members were present at the Roberts Dairy Party Room.

VAJA CON DIOS - May God be with you
Cards were sent this month to
Larry Bigley - Get Well
Flossie Litzenberg - Get Well

Dues will be delinquent Jan. 31. Why not pay now?

November is election month. Be sure to come to the meeting, and vote.

FROM THE PRESIDENT'S DESK

It was an honor to present a check for half of the profit from the National Show to the president of the Midwest Federation during their executive committee meeting on November 2 at Hammond, Indiana. Many of those present again expressed their appreciation for the fine job Lincoln Gem and Mineral Club members did as host to the event. Several had read our bulletin and knew that we had elected a feasibility study group to investigate the possibility of hosting a combined show in 1980. I also announced the fact during my brief remarks from the floor. The reactions I heard were all favorable to our hosting again in 1980.

We are indeed fortunate that the National Show produced a profit. We should all be happy about this addition to our assets. I have heard many different ideas about how the funds should best be put to use. One thing we don't want to do is to start quarreling about money and lose sight of the original purpose of our organization as stated in the Articles of Incorporation. Above all else, we are organized as a hobby group with the purpose, in a broad sense, of promoting interest in all branches of the earth sciences as well as providing education to other persons who are interested. This could be done in many ways. Consider some of the following examples:

1. Conduct and finance an educational seminar type of show. This would be a public function complete with displays, lectures, demonstrations, and visual aids. There would be no dealers and no selling, just pure educational opportunity for everyone.
2. Set aside a large sum of money, say \$6,000 or so, and invest it in long term certificates of deposit with the interest designated for donation to either the University scholarship foundation or the AFMS scholarship fund.
3. Make a donation to one of the many museums so earth science specimens could be obtained.
4. Offer courses, tuition paid, in one of the earth sciences, such as Gemology, Paleontology, etc. to the handicapped or underprivileged youth who have exhibited a desire to improve themselves. This could be handled through the University Extension Division on a cooperative basis.
5. Help finance the publication of educational papers and photographs of our local geological formations. These could be used by public schools, etc.
6. We could also help with scientific experiments in electron devices and their use in studying the earth.

These are but a few of the possible considerations. In all cases, our planning should have continuity. By continuity I mean we need to have an ongoing long range committee. This group should continue year after year and be the guiding advisory so that our money will be put to work for the purposes that have a permanent and universal result. The recommendations of this long range committee will of course be subject to approval of the general membership before any money can be spent. The necessary provisions for establishing and operating such a committee are already included in our by-laws.

--continued next page

From the President's Desk, continued

I understand that the Betty Crocker coupon program will be discontinued after Dec. 1, 1974. This means that we should all get our coupons turned in so they can be forwarded before the deadline. We will also need to consider other sources for our contribution to the scholarship fund.

We need help in documenting our club activities during the past year. Any one who has pictures of Club functions please call me and I will arrange to have copies made for the Club's records.

--Ralph Ulrich, President



CHRISTMAS DINNER

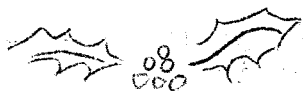


Dec. 14, 1974 6:00 p.m.
W.O.W. Bldg. 734 So. 27th St.

Semi-potluck

Club will furnish meat and drink.
Bring your own table service.

There will be a program and gift exchange.
Let the gift be related to the hobby.
Designate whether gift is for male, female,
or Junior.



CORRECTION: "Pick & Shovel" October, 1974--"Lonesome Flatlands Revisited"--7th line from end. Crazy Horse died 1877, not 1876. My own error in writing.--Julius D. Young

A leader has two important characteristics: First, he is going somewhere; second, he is able to persuade other people to go with him.
--via Southern Railway System Ties

A TREASURER'S DREAM.

I fell asleep the other night and while I had my snooze,
I dreamed each member stepped right up and promptly paid his dues;
But when I found 'twas but a dream, I nearly threw a fit!
It's up to you to make it true--Suggestion....Please Remit!!
--via Geo-logic

This page may be removed--folded, stapled, and mailed.

CHRISTMAS CELEBRATION

Let us all plan to share a few hours together celebrating the Christmas season on December 14 beginning at 6:00 p.m. in the WOW Bldg., 734 So. 27th St., where we regularly hold our meetings. The turkey or ham, and the drink, will be furnished by the Club. The rest will be potluck. We need to know about how many will attend so that we can order meat accordingly. Bring enough for yourself and your guests, also tableware such as plates, etc.

We will have a gift exchange and a program. The business meeting will be very short so we can really enjoy a feeling of fellowship during Yuletide celebration.

Please fill in this form and return it to Ralph Ulrich, 3909 Pace Blvd., Lincoln, NE 68502, so we will know how much to buy, etc.

Name _____

Address _____

Yes, we will be with you, all _____ of us.

We prefer _____ Ham _____ No. of persons
_____ Turkey _____ No. of persons

BOARD MINUTES--October

The October Board meeting of the Lincoln Gem & Mineral Club was held Monday October 14, 1974 at the home of the President, Ralph Ulrich, 3909 Pace Blvd., with board members Ralph Ulrich, Frank Rule, Nelda Oliver, John Harrison, Jr., Marie Wells, and Howard Taylor. Committee-member Florence Boring.

The meeting was called to order by the President, Ralph Ulrich, with the reading of the minutes of the September meeting.

The minutes were approved with the following corrections: Should read not many people attend organized field trips, and Junior members for the board should be over 16 years of age.

Treasurers report given by John Harrison, Jr., and approved as read.

Bills were read. Motion by Howard Taylor to allow bills as read, seconded by Frank Rule. Motion carried.

Glen Litzenberg has consented to be 1975 Show Chairman. Motion by Marie Wells that appointment of Glen Litzenberg be approved as 1975 show chairman, seconded by Howard Taylor. Motion carried.

A motion by Marie Wells to pay gratuity of \$10.00 to the 1974 show delegate Rosa Lee Wright, for attending the delegate meeting in Lincoln, seconded by Frank Rule. Motion carried.

The delegate to the Cincinnati Show was not paid. After discussion, Frank Rule made motion to pay fee to Cincinnati for the delegate. The fee to be \$50.00., Seconded by John Harrison, Jr.. After more discussion a motion by Frank Rule to Amend the original motion. Motion to read: Allow Marie Wells \$25.00 instead of \$50.00, seconded by John Harrison, Jr.. Motion carried unanimously.

Application for junior member Lee Pivonka age 14. Motion by Howard Taylor to approve membership upon payment of dues, seconded by Marie Wells. Motion carried.

A committee has been appointed by the President, to study the raising of dues. They are Julius Young, Florence Boring, John Harrison, Jr., Howard Taylor and John Lewis. Florence Boring will be chairman. Dues are payable November 1 and delinquent January 31st.

Lincoln Gem and Mineral Club Christmas party will be December 14, 1974. Second Saturday. Moved by Marie Wells we have a Christmas party, with club furnishing all expenses except for a dollar a person, seconded by John Harrison, Jr.. After much discussion motion lost.

Howard Taylor asked the board #1. If they wanted to consider hosting a Rockrama for the Bi-centennial celebration in 1976?. After discussion a motion by Frank Rule the board of directors recommend to members that Lincoln Gem & Mineral Club sponsor a Midwest Federation Rockrama in 1976 as a Bi-Centennial celebration, seconded by Howard Taylor. Motion carried unanimously. and #2. If Lincoln Gem & Mineral wants to take action on combination Midwest/American Federation show in 1980?. After discussion, a motion by John Harrison, Jr., we recommend the club elect a study committee to investigate the possibility of a combined National and Midwest show in 1980, seconded by Frank Rule. Motion carried unanimously.

Motion to adjourn Frank Rule.

Nelda Oliver, Secretary

Everett Lapidary Shop

THE CAPITOL CITY'S FIRST ROCK SHOP

2941 North 65th

PHONE 466-6204



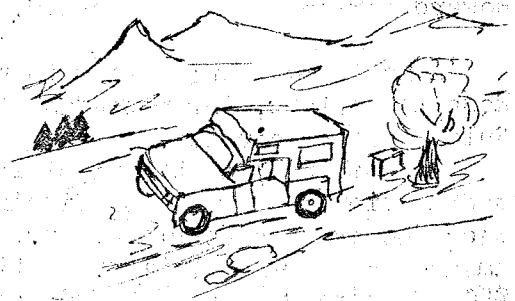
"Get your Christmas shopping done early."

"SATISFIED CUSTOMERS ARE OUR BEST ADVERTISEMENT"

TELEPHONE 466-1697

TOM & LEFTY'S ROCK SHOP

6333 KEARNEY STREET
LINCOLN, NEBR. 68507



Erazilian Agate

Wyoming Turritella, Black Wood,

Algae and Blue Forest Wood

Nebraska Blue Agate and Black Wood

SLABS CARS ROUGH INFORMATION HELP

JEWELRY AND CUSTOM CUTTING

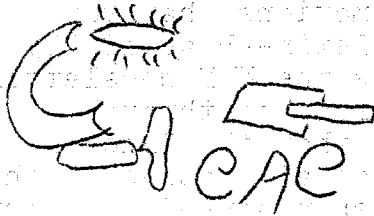


W I N T E R N E A R S

When Winter waves his magic wand, a fairyland appears;
 The shrubs along the picket fence are knights with shining spears.
 Drifting downward through the sky, comes the glistening snow;
 Floating, whirling, twirling by, down to earth below.
 Snowflakes, snowflakes, large and small, far as eye can see;
 Happy 'Rockhounds' one and all, into their basements flee -
 At their grinding, sorting, polishing they stay,
 As with last summer's rocks they happily play.

-Several bits of plagiarism-

Community Arts Council Report



The first meeting this fall of the Lincoln Community Arts Council was held Oct. 21 at the Public School Administration Building. The coordinating Arts Council for the Lincoln Public Schools shared a report on last year's "Year of the Arts", and their plans for the coming year.

A series of slides was shown of the art forms and how they were implemented in the schools of Lincoln. A detailed report in booklet form titled "The Year of the Arts" included things that were done in each field, staff comments about the program, and a summary in each division. Areas covered were music, drama, dance, and visual arts.

Support programs for this year are in effect now and available to schools throughout the district.

Larry Enersen reported as chairman for the nominating committee the following slate of officers that was unanimously approved:

- Larry Lusk, President; John Prasch and Mrs. Ed Walt, Vice-presidents; Norma Carpenter, Secretary; Eams Erwin, Treasurer.
- Immediate Past-president is Breta Dow, and Board members are Sam Davidson, Dick White, John Prasch, Chuck Pallesen and Larry Enersen.

There were over 60 members and guests of the associated groups present. A good turnout for a new season.

--Norma Miller, substitute for Rev. Raymond Pfeiffer
Community Arts Council Representative

WE ARE SORRY TO REPORT that Flossie Litzenberg suffered a heart attack November 7, and is in intensive care at the Bryan Memorial Hospital at this writing.

PLEDGE

As a thoughtful American operating an off-road vehicle to enjoy more of the nation's awe-inspiring scenery or to more easily do my job, I pledge to.....

Leave the land and its vegetation as nearly like I find it as possible.

Limit travel primarily to established roads and trails or areas where I won't disturb the soil.

Protect any evidence of historical or scientific interest.

Respect the rights and property of others including miners, ranchers, hunters and other recreationists.

Observe all courtesies of the road. Travel safely.

And keep the back-country beautiful by packing out all of my litter.

--Bureau of Land Management



Each year, according to the By-Laws and Constitution of the Lincoln Gem & Mineral Club, a nominating committee is elected by the club and their function is to prepare a slate of officer candidates for the following year. This year committee was elected in September, presented a verbal report at the October meeting and takes pleasure in presenting for the November election the following candidates:

President	- - - - -	Frank Rule
1st Vice-President	- - - - -	Larry Bigley (one to be elected)
		Florence Foring
2nd Vice-President	- - - - -	Don Carter (one to be elected)
		Glenn Ulrich
Recording Secretary	- - - - -	Nelda Oliver
Treasurer	- - - - -	John Harrison
Board Members	-(Four (4) to be elected)	
	- - - - -	Jim Marburger
		Virginia Green
		Glen Litzenburg
		Jo Ella Olson
		Hazel Greenwade
		Irl Everett
		Tam Dutcher
		Don Eckle
		Howard Taylor
		George McCinnis

Additional nominations may be made from the floor with prior consent of the nominee.

"Thank You" to all those members contacted who responded so willingly and filled our slate so completely. George McCinnis, Howard Taylor and Phyllis Parks.

NOTICE - CHANGE IN VOTING PROCEDURE FOR 1974 -

From the minutes of the General Meeting of October 27, 1973:

"Change in procedure of voting was discussed. Motion by Ralph Ulrich, The provisions in the by-laws that state a slate of candidates shall be prepared by the nominating committee be suspended for 1974 and that 1974 election be conducted as elimination election. This allows a candidate the opportunity to run for any of the remaining offices to be voted on. He must be nominated from the floor and give a verbal o k. This was seconded by Tom Simmons."

-from the notebook of Nelda Cliver, Rec.Secy.

With this procedure in mind, the nominating committee has already obtained verbal ok from the above slate of candidates for their nomination to another office if not elected the first time their name is presented. Separate ballots have been prepared for each office with plenty of write in space.

Remember - Get Out and VOTE! See following pages for resume of candidates.

ABOUT THE NOMINEES - - -

Frank Rule, currently First Vice President, is also Chairman of Housing and Property Committee and trying very hard to help locate a less expensive meeting hall which will be suitable for our monthly meetings. Frank has been a hard-working club member for almost a dozen years, having assisted in the 'Plezy Dig' and worked on many committees with our annual shows even while we still were holding them at the National Guard Armory. When he retired he became a roving rockhound with his complete lapidary shop in his pick up. His areas of service are too many to relate in detail and are surely known to most of the members.

Larry Bigley has served as 2nd Vice President in 1974, as Chairman of the Field Trip Committee for two years and has planned and printed the Field Trip Guides which are so popular. He and his wife are Assistants to the Pick & Shovel Publisher and many times have stepped in and completed the bulletin so they could be mailed in time. They also have generously lent their home for circulation headquarters and work hard to help get the 280 copies of P & S assembled.

Florence Poring, currently Program Chairman, has been active in Lincoln Gem and Mineral Club for at least a dozen years and has served on numerous committees. Whenever Florence assists on program you may be sure it will be interesting and educational.

Don Carter has just recently moved to Lincoln from Colorado and their loss is our gain. He transferred his great capacity for enjoying the gem and mineral hobby to our club and nearly every meeting has brought some phase of his hobby to show and share with interested members.

Glen Ulrich has been in the club since he first set up a display at Pershing for one of our shows. He has worked or assisted wherever he could, mainly in the lapidary shops. He has gone from being an interested rockhound to working as a professional jeweler.

Nelda Oliver, currently handling the office of Recording Secretary in a very capable and cooperative manner. Has done many special printing jobs for the club, has efficiently handled the calling committees, and is a member of the current Housing and Property Committee.

John Harrison, currently the Treasurer and willing to continue in that capacity. John and family have been very active ever since they joined the club and have served on several committees for our annual shows.

James (Jim) Marburger has never been a candidate for office in the club but has been a very energetic worker for our shows ever since he joined us. From Humboldt, Nebraska, graduated from the University of Nebraska and is currently with the U. S. Geological Survey based in Lincoln.

Virginia Green, currently Hospitality Chairman in charge of the guest book and attendance record. Has worked on several committees and given us several fine articles on Safety for The Pick & Shovel. She has also been a help with the Junior 4-H Petrified Pebble Pups as she has some eager 'pups' of her own.

- more to come -

MORE ABOUT THE NOMINEES - - -

Glen Litzenburg has worked on several committees the past year and has agreed to act as Lincoln Gem & Mineral Club's Show Chairman for the 1975 Show to be held in the spring.

Joella Olson, currently our Librarian, has been active with rockhound activities for a number of years. Has been a club member since 1970 and active in many areas. Possibility her biggest project was the organization of the "ZODIAC" display for our 1971 Show.

Hazel Greenwade, currently on the Refreshment Committee, has served in several capacities in her 6 years in the club. Has participated in the calling committee, information booths for our shows, and an industrious worker on the Circulation Committee for the Pick & Shovel.

Irl Everett is a founder, Active Life Member, Past President two separate times, enthusiastic rockhound and dealer. Irl has at some time or other touched most of the Lincoln Gem and Mineral Club Members with some of his vital interest in the entire hobby.

Tam Dutcher served as Treasurer of the club for a year before having to resign for personal reasons. Now she has become active again and we are fortunate to have such a competent person willing to share the task of planning for the club.

Don Eckle has been very active in the club, including membership on the Board of Directors. He has chaired committees for our annual shows such as building the fine black light display for the 1973 show.

Howard Taylor, currently on our Board of Directors, First Vice President of the Midwest Federation, President of the Nebraska Association of Earth Science Clubs, (NAESCI)-for the second year in a row -a Past President of LOMC, has been our Show Chairman several times and always an active member in the club.

George McGinnis spent several years on the Board of Directors, including a term as 1st Vice President. He has chaired several committees and helped to produce good shows and excellent swaps. He has always helped put rocks into our monthly meetings by bringing a variety of materials to display. His enthusiasm for collecting is vast and he is quite willing to share his knowledge. He has been very active the past year with Marie Wells' 4-H Petrified Pebble Pups and is now helping the older 'Pups' to learn the art of lapidary.

If this does not answer your questions about the candidates please call them up and ask their views about club matters and activities that you are interested in. Be sure that you vote for the people who will plan the best years activities and try to please the majority of the members.

GLENNA'S GLEANINGS



Lars and Andrew Olson, members of Marie Wells' 4-H group, the Petrified Pebble Pups, were interviewed on Channel 3 recently, along with representatives of other Nebraska clubs, about their interest in Earth Science.

Best wishes to Harvey Kenfield and his bride, the former Glenda Ross, on their October 13 marriage at Grant, Nebraska.

Glen and Flossie Litzenberg are the 1975 show chairmen. Let us all pitch in and help them make this a fitting sequel to the last June show.

J. D. and Myrtle Young were hosts to a "remembrance" afternoon on November 3, honoring the late Dr. John Neihardt.

Vernon and Millie Heller report the recent marriage of their daughter, Marla. Much happiness to her.

Flossie Litzenberg, Larry Bigley, and Rev. Raymond Pfeiffer extend their thanks to members for cards and letters during their fall hospital stay.

Marie Taylor reports son, Jim, recently received a promotion from his job at the Dept. of Roads to the State House. Goodo, Jim!

When planning next summer's vacation trips, keep in mind that the State Rock Show will be hosted by Gering, Nebraska, on June 13, 14, 15, 1975. The following weekend, June 21 and 22 will be the Rocky Mountain Federation show at Denver, Colorado.

Dues are due now. Why not pay them before Christmas shopping leaves your pocket flat?

The Nominating Committee, headed by Phyllis Parks, has made up a good slate of candidates. Attend the November meeting and vote for the candidate of your choice.

There are some superb cooks among our members. Do be thinking which of your specialties will grace the festive board when the club meeting and Christmas dinner party are held on December 14 at the meeting hall.

MWF SHOW - 1976

MWF Council has given the St. Louis area the go-ahead for the 1976 MWF Show and Convention. Four Clubs in the greater St. Louis area are to host this Show:

- St. Louis Gem and Mineral Society
- Rockwood Gem and Mineral Society
- Shell Rock, Gem and Mineral Club
- McDonnell Douglas Gem and Mineral Society

If anyone should desire more information, contact:

Show Chairman, Mr. Gerald Hook
 932 St. Charles Avenue
 St. Charles, Missouri 63301

--via "The Geode"

Friends Pay Tribute to Dr. Neihardt

Friends of Dr. John G. Neihardt, Honorary Life Member of the Lincoln Gem and Mineral Club, gathered at the home of Myrtle and J. D. Young Sunday afternoon, November 3, 1974, to mark the first anniversary of his death.

Something of the warm presence of the beloved "Gaki" and his constant companion, the little white poodle Jacquot, seems to hover yet about this home in Lincoln, Nebraska, which he shared the last seven years of his life; so it was fitting that his friends should gather here to see a fine new documentary film about him and to review, via an excellent slide program, the restoration of his study in Bancroft, the development of the Sioux Prayer Garden there, and the growth of the annual State Neihardt Day.

Increasingly, Neihardt fans are expressing the belief that appreciation of him and his works is steadily growing. Perhaps no one has expressed this feeling better than his long-time friend, Mrs. Hilda Black of Lakeside, Nebraska, in her beautiful sonnet:

John G. Neihardt

Beneath porched brows he peers, as though to scan
Trails lost in blue horizons. From his pen
Words, planted like a garden, sing of men
Whose deeds and dooms shed glory on the van
Of myriads flowing as the rivers ran,
Into the sunset. Past three score and ten,
His soul shines through as brightly now as when
The great adventure of his life began.

What vision must have lured him to attain
His shining summit that shall never fade!
When he has heard at last life's stern refrain
That all must hear and no one can evade,
Words planted like a garden shall remain
And homage to the singer shall be paid.

--Contributed by
Florence Boring

IN MEMORIAM

November 3, 1973, was a sad day for the many friends and admirers of Dr. John G. Neihardt, our beloved poet laureate and honorary member of the Lincoln Gem and Mineral Club, for it was the time of the "great change", that he referred to when he said, "Rumors of the flesh and whisperings of the spirit alert me to the fact that I am getting nearer to the great change and I do not regret the fact." It is appropriate at this time when we are commemorating his passing to share with you this special poem, written by Dr. Neihardt, which he suggested be read at his memorial service. He said that the right one was "sentimental enough" and a "sincere thing", but with an "O. Henry ending." In memory of Dr. Neihardt the following poem is submitted:

When I Am Dead

When I am dead, and nervous hands have thrust
My body downward into careless dust;
I think the grave cannot suffice to hold
My spirit 'prisoned in the sunless mould!
Some subtle memory of you shall be
A resurrection of the life of me.
Yea, I shall be, because I love you so,
The speechless spirit of all things that grow.
You shall not touch a flower but it shall be
Like a caress upon the cheek of me.
I shall be patient in the common grass
That I may feel your foot fall when you pass.
I shall be kind as rain and pure as dew,
A loving spirit 'round the life of you.
When your soft cheeks by odorous winds are fanned,
'Twill be my kiss--and you must understand.
But when some sultry, storm-bleared sun has set,
I will be lightning if you dare forget!



Our Trip to Oklahoma - Irl and Lois Everett

We left on a trip to see our friends, Ivan and Mildred Painton, in Orion, Okla., on Oct. 21. As planned, we stayed at their place until Oct. 24, and then headed to Tulsa for the Gem and Mineral Show.

We arrived at the Painton's about 6:00 in the evening. It was a very nice trip down to their place. The one stop we always make is at Linsberg, Kansas, the Swede capital. While there we had dinner and shopped in a couple of the native craft shops.

Leaving there, we had one more stop before arriving at the Painton's, and this was a place called "The Little Sahara." It is about three miles south of Waynoka, Okla. We have visited this place a few times before and always find it interesting. The sand dunes there are just like in the desert--always moving and changing. There is a tall tower there that you can walk up to and look out over this wide expanse of sand. There is also a small zoo with llamas, camels, and Texas long-horn steers. After leaving this place, we drove on to the Painton's.

I just love to be a guest in their home. They are such dear friends, and of course they are very interesting to visit with. It seems as if Time slides back at their place. All around was scrub oak in full color. I have never seen the trees so pretty.

Ivan and Mildred live in a place called Orion. It's between Chester, Okla. on the west (8 miles) and Fairview on the east (18 miles). They have one of the only country stores left in this part of Oklahoma. The store is just like you would think of a store that was in full swing 50-75 years ago. They have a very interesting Rock Shop there. It is full of items that would be of interest to all who stop.

I must tell you about their house and Ivan's studio. The living room in the house was a log cabin, and I must say it is very rustic. You can just sit there and feel Time slide back. I have often sat there and looked at the logs and chinks and wondered what it was like living on the prairies and in a "house" like that in the middle of winter.

The Studio is another place that is very interesting. Ivan always has 20-30 paintings finished and is working on maybe another 10-15 more. As most of you know, Ivan is well-known for his "Rock Art" painting. When he finds a slab or cab with a scene or picture in it, he duplicates it on canvas using the exact colors and images he finds in the rocks.

While Ivan was here in Lincoln at the National Show, he told us that he had more coverage here than in any other Show he has ever attended. Lois and I gave him six slabs. I wish you could see the paintings he has completed. They are exact and true to form. I always love to be in his studio and just sit and talk to him. This was about the only time I've been there when he did not read a poem or two for me that he has written.

Wednesday, Oct. 23, they "took the day off" and we went on a trip with them. We left Orion and drove down to Canton and looked over Canton Lake and Dam. This was very informative because as we drove over the dam and looked back we could see both shores. On the west shore the banks were very red, as Oklahoma can be, and on the east the shores were white. We ate dinner in Roman Nose Park and saw all there was to see

--continued next page

Our Trip to Oklahoma, continued

there. We then started back. We went through a town called Okeene, Oklahoma. This town is famous for its Rattle Snake Roundup. They come from all over here in the spring to hunt rattle snakes. Once again the scenery was very pretty. On back to their place and a good night's rest.

We left Oct. 24 for Tulsa. One more stop in Enid to see a friend. I wanted to see Eva Fothergill's museum, but didn't have time. Anyway we have been there before. If you are ever close to Enid it is a MUST stop. Eva's father was very well known in Oklahoma and both her mother and father were rock collectors, big game hunters, and interested in Oklahoma history. The museum is full of things that are one of a kind.

We left Enid and drove on into Tulsa Thursday night. The city of Tulsa has many very interesting things to see. Of course, it's the home of Oral Robert's University plus many museums and fun places.

Friday, Oct. 25, we went to the Fair Grounds to set up for the Rock Show. The Tulsa Gem and Mineral Club has about 400 members who are very active in the hobby. They host the Show every other year, with Oklahoma City hosting a Show on the years they don't. The Show itself was outstanding, with many very nice and unusual displays.

There were friends there that we have known and met many times before. I saw Steve and Hazel Tarza, Lou Montgomery and others. On Sunday, lo and behold, a man and his wife came by our booth and visited with us! After a few minutes, they informed us that Art Howlett is their cousin. I forgot his first name, Art, but his last name was Howlett.

There are many Indians in and around Tulsa, and it can be said that they love to wear the turquoise. Lois and I both agreed on one thing--we have never seen so many folks wearing Indian-type jewelry. Both the big squash blossom necklaces and bracelets. I'm telling you that I didn't know that there was that much silver and turquoise in Oklahoma. Needless to say, we just looked and drooled.

A couple of dealers who were at the National Show were there--the Dawsons and the Roadrunners. They had many nice things to say about "our" Show.

We left Tulsa Sunday night and drove to Bartlesville, Oklahoma. Here is a town full of history and many nice things. We arrived home Monday night and needless to say we were very tired.

The Show in Tulsa was an outstanding Show, and we had a lot of things to remember from our trip into Oklahoma again.

While we didn't do any actual rock hunting, our spirits were lifted when we saw all the beauty God has put on this earth, plus just relaxing with friends. That was worth all the effort we had put into it.

Anyone who has never spent any time in Oklahoma, and wants to know about it in detail, can come on out and visit with us. Also, if you would desire to rock hunt, you would find it a very productive state.

We had a wonderful time--wish you could have been there with us.

THEY'RE SELLING WHAT?

COPROLITE is a popular item in the rock stores where bits of Colorado stone are sold to souvenir-hungry tourists. It is pretty when polished, a variegated stone that looks good in rings, bracelets and pendants. But tourists want it for another reason:

Coprolite is petrified dinosaur dung.

To scientists, fossil excrement is a valuable source of information about the food habits of extinct animals. To tourists, it is a conversation item. When complimented on wearing a nice-looking stone, they can reply: "That's dinosaur manure!"

Colorado has a lot of dinosaur manure, especially on the Western Slope, and J. V. Kelly of Mack, Colo., seems to collect more of it than anyone else.

Kelly, a professional rock hunter, estimates he has shipped 50 tons of coprolite to stores throughout the United States and abroad since polished dinosaur droppings became jewelry items about 15 years ago.

At first, storekeepers would whisper the true nature of coprolite into a buyer's ear. Now, it is fashionable to label it correctly. One of Kelly's customers, Marty Stroo of Georgetown, Colo., displays a "Dinosaur manure" sign in the window of his store, The Wildcats.

"It intrigues visitors," Stroo says.

Kelly sells coprolite for \$1.30 a pound, as is. (It looks like a rocky cow pat in specimen form) Cut and polished, a two-inch slab of coprolite set into a brooch or pendant costs from \$7.50 to \$11.50, or more.

The price goes up with polishing because no one can tell if coprolite is of gem quality, meaning suitable for polishing, until it is cut apart.

It can be found in various sizes, from rocks weighing only half a pound to chunks of nearly 200 pounds.

"The size of the dinosaur has a lot to do with it," Kelly notes. Usually, he adds, when you find coprolite, you find a great deal of it, maybe as much as a ton.

Did dinosaurs always relieve themselves in the same place?

Stroo admits that is what he tells tourists, but a more scientific explanation is that prehistoric waters pushed waste materials into a mass.

The tourists, Stroo adds, are always impressed by the fact that coprolite is 140- to 175- million years old. But they still ask if it smells.

--Olga Curtis (From The Denver Post)
Submitted by Rev. Raymond Pfeiffer

A smart young rockhound named Steele
Said He could tell coprolites by the feel!
But at our last location
He lost his reputation
When he picked up one that was real!

--Polished Slab

S H O P H I N T S

Use an electric fry pan to heat the stones of dopping. Set it at 210 degrees and there will be no danger of cracking. Line it with aluminum foil, then put the side of the stone up you wish to dop. Get the wax on the dop stick hot, then set it on the stone and shape..Rock Chips

To antique silver jewelry, paint the places to be darkened with raw egg yolk. Rinse off the egg and rub highlights with Linde A.
--via Agate Picker

PRE-POLISH: To achieve a good pre-polish, try this little trick. When you come to the 600 grit paper, apply pumice to the paper, then proceed as usual. This enables you to attain the ultimate high shine on the final polish.....From Skagit Gems, via Pebble Pages

Sew rock bags out of bright yellow canvas. They will show up at great distances, so if you set your rock bag down you can easily find it again. Paint your rock pick and shovel to match:....From Minnetonka Newsletter via The Conglomerate via The Geode

Spic and Span has oxalic acid in it and is especially good in the polishing agent mixture. (via The Gem News of North Las Vegas)

SO YOU THINK YOU HAVE JADE

1. If a small chip is knocked off the end of the suspected rock, the freshly broken surface should not sparkle in the sun. If it sparkles or glitters, it is not jade.
2. If you can scratch it with a knife point it is not jade.
3. It should be much heavier than a common rock of similar size.
4. Tap the specimen lightly with the point of your hammer. If a small moon shaped fracture shows up, it may be agate or jasper, but it isn't jade.

From "GEM DANDY BULLETIN via Foothill Rockhounds' Rag" and "The Agatizer" via Prospector

The blue color of turquoise that has been lost can temporarily be restored by soaking the gems in ammonia, followed by grease. It is wise to try this on a small piece first.

Amber can be distinguished from plastic by placing it in a saturated salt solution. Amber will float.

--from Gems & Minerals via Flint Chips

QUARTZ CRYSTALS with red and brown stains can usually be cleaned by soaking in a concentrated solution of oxalic acid. Black stains may be due to manganese -- use a diluted hydrochloric (muriatic) acid.

--from CRACK 'N CAB

Are you having trouble with your dop wax breaking between the dop and the wax? If so, the trouble is that the wax is too brittle. It can be made more pliable with a little beeswax added to it. Try adding a piece of beeswax the size of a pea to a quarter pound of dop wax.

From the Rock Chipper via The Geode



JUNIOR PAGE



Pebble Pups on T.V.

Lars and Andrew Olson, members of the Petrified Pebble Pups Club, were invited to appear on Channel 3, Omaha, Oct. 26 to participate in a five-minute question-and-answer period promoting the 4-H Geology Project now available in Nebraska. The boys did an excellent performance in presenting the project, and seemed very comfortable on their T.V. debut.

Dear Pebble Pups:

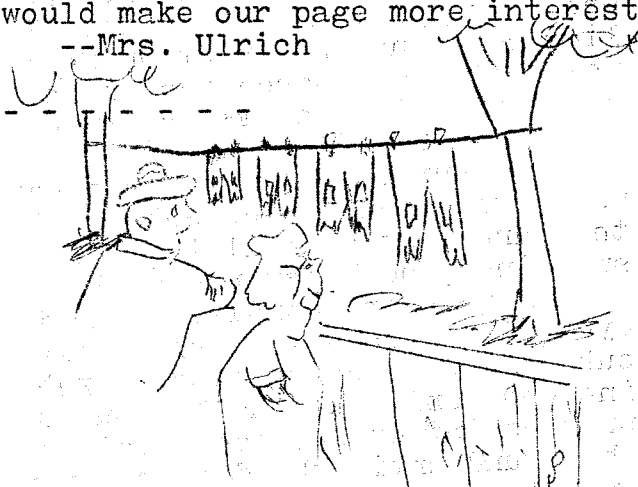
The Geode has a Pebble Pup page. On it are some stories which members have written. I'd like to share one of the stories with you.

Fun With Trading
by Chris Filla (Age 12)

Last summer we went to the Lincoln Swap. We arrived Friday morning; we set up camp and waited for the rest of the rockhounds to come, because we were the first ones there. Saturday morning we got up early, had breakfast and went out to trade. As I was walking up and down the aisles of cars and campers with my box full of rocks to trade, I noticed that there were people from many states, and most of the people went out of their way to be nice to children. So that is why I would encourage everyone to come, especially the Juniors. We all had a lot of fun, and I'm sure you will, too.

That was a nice story. Why don't some of you write about your experiences at the 74 Show? Your stories would make our page more interesting.
--Mrs. Ulrich

S A P P H I R E N I R T I C
J A D E N O T S N O O M Z B
D T L F R X L O H E O K Z E
T M E E Y I N A N S L N I N
A Q B N N S D I P I B A R I
M D O T R I L O V O E I C R
E L N A Z A P O T U R L O A
T E A O M W G S X Q Y E N M
H G T R M B P E A R L N Y A
Y Z U A O A E C J U H R B U
S O N F G C I R Z T R A U Q
T E M E R A L D W O L C R A



"Looks like the Smiths are back from another rockhound trip."
(from Back Benders.)
Gazette via Slab and Gab

Can you find 25 gems in the above?
You may go up or down, forward or back or diagonal.

--R. Partington, Miss Bolton,
R. White, via The Prospector

HAPPY THANKSGIVING!

SAFETY PAGE



LAPIDARY SAFETY RULES,
from the Northwest Federation Safety Program

1. Protect your eyes when chipping or grinding rocks.
2. Run your grinding wheels no faster than the speed recommended by the manufacturer.
3. Avoid letting your wheels become water-logged by allowing the wheel to spin a while with the water turned off. Otherwise, the water will settle at the bottom and run out of balance causing the wheels to become bumpy.
4. Keep the grinding face true and straight across. Grooves or channels serve no useful purpose and may cause a wheel to split and part.
5. Cover all belt pulleys with some kind of guard or shield - it may save a finger.
6. Use dop sticks after initial roughout grinding to prevent cutting of fingers on grinding wheels.
7. When dry sanding, use a dust mask or suction blower. Breathing of such dust particles can cause silicosis.
8. If oxalic acid crystals are used in polish mixture, use rubber gloves and avoid inhaling any fumes because it is toxic when absorbed by the skin or lungs.
9. Be careful when using an alcohol lamp to dry or melt dopping wax. It is a fire hazard.
10. Always keep all harmful liquids and powders properly labeled and away from the reach of children.

--via Glacial Drifter

TRY AN ICE CUBE!

Next time you hurt, don't reach for the familiar beep-beep tablets. Instead, try an ice cube.

They're a powerful anesthetic, and have been used in major surgery while the patient was awake. The ice cube has been used for pain relief covering the spectrum from slivered fingers to backache. People who can't take narcotics or who demand an unreasonable amount are good candidates for the ice treatment. Pain is relieved and after effects are avoided.

To put ice to work as a pain reliever, put a burned finger in cold water to which an ice cube or two has been added--or hold a cube against the burned area until the pain disappears. There will be very little swelling, and blisters won't appear, so the burn will heal much faster.

A fainting condition due to extreme summer heat--face flushed and eyes glassy--should respond dramatically to cold water containing ice cubes rubbed across arms, forehead, and back of neck. Ice stops bleeding, not only externally, but under the skin from a bruise. Ice helps prevent infection, too. Cold keeps germs dormant. A cube held against the wound until the doctor arrives practically eliminates the danger of infection.

Ice is safe, since it refrigerates the tissues without freezing them. But don't add salt to the ice, as this can lead to frostbite. The ice cube will work efficiently by itself and needs no help from anything else.

--The Lapidary

Meet Mary Anderson--New AFMS President
by RuJean R. Brunson



Mrs. Russel (Mary) Anderson, the newly elected president of the AFMS, taking office Nov. 1, was destined to be a rockhound. She was born in the little mining town of Lark, Utah, in the rich Bingham mining district of the Oquirrh Mountains of Salt Lake City. She grew up with the hustle and bustle of all the mining activity going on at the U. S. Mine, the Highland Boy, and the thriving Bingham open copper mine.

Her father was an industrious Irish-Italian miner who taught Mary his love of rocks. Her mother was a spirited French-English girl, fresh from France, who gave Mary some of her vivaciousness and taught her the songs and some of the language of her native France.

Mary went to work for the Radio Shop in Bingham. You might be surprised to know that if you developed a problem with your radio, Mary could fix it. She went to school to learn all about radio systems and circuits.

Mary went on to attend and graduate from the University of Utah. For many years Mary has been the medical technician serving the medical staff at the Bingham Clinic. When Mary goes on her Federation trips, "Doc" Bennion goes on vacation, too, (he is a Federation officer also) because his dental office can't function without her.

In Bingham Mary met a very personable and knowledgeable young geological engineer, W. Russell Anderson, and they were married and decided to pursue their common interests together. Russell, who is admired and respected throughout mining circles in the West, recently retired as chief geologist for Kennecott Copper Corporation. Together they have attended many interesting conventions of the Utah Geological Association and mining groups. Because of Russell's connection with mines, they have been able to build up a fabulous mineral collection. Mary is a fine lapidary.

Mary and Russell have been rock club members for many, many years, working hard for all Utah clubs. They belong to most of the clubs in Utah and always have cases in club shows. Mary has been program chairman and president of the Mineralogical Society of Utah and president of Wasatch Gem Society. She serves now as a club delegate for the Moab Points and Pebbles Club to the Utah Federation of Mineral Societies. For the past three years she has been chairman of the Mineralogical Society of Utah's annual gem show "Wonderful World of M.S.U."

--From The American Federation News

Our Stamps are Best Sellers....Mrs. Lillian Turner, AFMS Stamp Chairman, reports that the beautiful AFMS stamps are virtually a sellout. Most larger post offices have sold their entire supply with some customers reportedly stocking up with as many as 500 sheets of stamps.

Many club bulletins in all of the states are using the mineral heritage stamps on their bulletins, and Mrs. Zeitner reports that the petrified wood stamp is a run-away favorite. The Federation is retaining a set of bulletins with the mineral stamps.

Mrs. Turner reported that Mrs. Jamison of the Citizen's Stamp Committee in Washington is well satisfied with the reception of this colorful series of stamps.



My pumpkin pie is soggy
 And I'm nervous as a cat
 For there's twenty-two for dinner
 And I don't know where I'm at!
 The cranberries are runny
 And the turkey wouldn't stuff,
 My baking powder biscuits
 Just plain refused to puff.
 The vegetables are water,
 The molded salad toppled:
 The baby's howling in his crib
 And screaming to be bottled.
 I knew if we had dinner here
 I'd surely live to rue it.....
 Oh why was I so dumb last year
 To say this year I'd do it!

--By Ann R. Franco, Hollywood
 Lap. Soc., via Psephite,
 via Gem Drops

On a recent ghost town trip this letter was found, dated 1800's
 Dear Son:

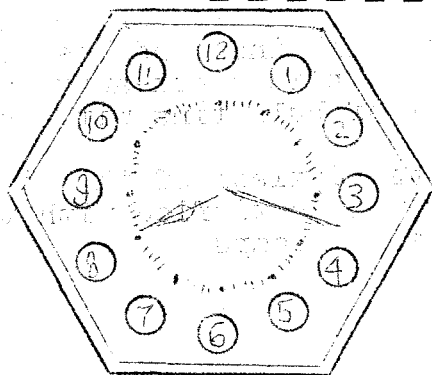
Your Pa has a good job now, the first one in 48 years. We
 are a great deal better off than we were. Your Pa's gettin \$14.95
 every Thursday, so we thought we would do a little fixin up.

We sent to Monkie Wards for one of them new fangled things
 called a bathroom, that you hear tell of in some houses. It is
 put in place by a man called a plumber. On one side of the room
 is a big long thing like the pigs drink out of. Only you get in
 it and wash your body all over. On the other side of the room is
 a little white thing called a sink, this is fer little washings
 like your hands and face. But over the other corner, Son, we've
 got something there, a little contraption that you put one foot in
 and wash it and then you pull a little chain and get fresh water
 to wash the other foot in. Two lids come with the dern thing and
 we ain't had any use fer them, so I'm using one fer a bread board
 and the other one has a big hole in it, so we took it and framed
 Grandpa's picture with it.

They are awful nice people to deal with, they sent us a big
 roll of writin paper with it.

Take keer of yourself, Son. --Ma

--via Gem News--The Loess Bulletin



TIME TO PAY YOUR DUES

Midwest Federation's NEWSLETTER

Published monthly except July and August as a service to members clubs.
All news, articles, subscription orders and requests for information concerning publication
should be sent to P. O. Box 1130, Des Moines, Iowa 50311



Issue No. 149 - November 1974

Supply orders

Clinton Heckert, Director of Supplies for the MWF, has been shipping all supplies with exception of stationary... letterheads and envelopes. Effective immediately he will also be shipping the letterheads and envelopes. Send all your orders for supplies to Clinton Heckert, 725 Stewart Street, Elgin, Ill. 60120.

MEET YOUR MIDWEST OFFICERS

The Midwest Federation will be led in 1975 by an experienced set of officers. The Midwest has an advancement program wherein a second vice president moves into the first vice president position and then to president.

The 1975 President is Terry Huizing, a native of Grand Rapids, Michigan, now living in Cincinnati, Ohio. He was graduated from the University of Michigan in 1961 with a degree in Chemical Engineering. Terry has been actively involved in the hobby in many ways. He is a past president of the Cincinnati Mineral Society, and Assistant State Director for Ohio. He is an avid amateur mineralogist and a member of Friends of Mineralogy.

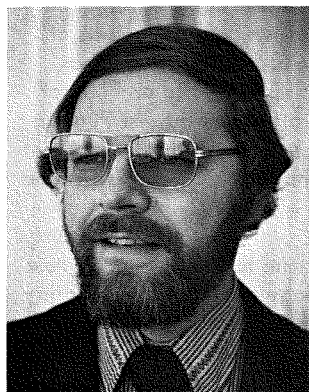
First Vice President of the Midwest is Howard J. Taylor, living in Lincoln, Nebraska. Howard is a painting and wall paper contractor. He became interested in the lapidary hobby in 1959 when his son was active in the Boy Scouts.

Howard is a member of the Lincoln Gem and Mineral Club and during the past 15 years has held numerous positions in the club.

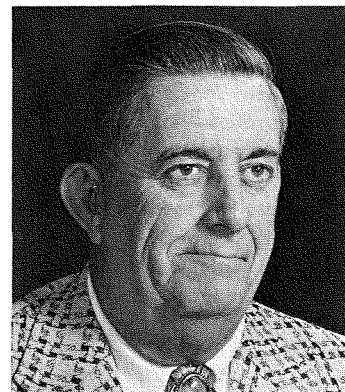
The Second Vice President is Miss Hazel Kuntz, Quincy, Ill. Hazel was a commercial artist specializing in pen and ink and layout work before her retirement. She is a member of two clubs, The Worthen Earth Searchers, Carthage, Ill. of which she is program chairman, and the Gem City Rock Club, Quincy, Ill. where she is secretary. She has been State Director for Ill. this past year. Her main interest is in minerals with some work in lapidary when the time permits.

Mrs. Joseph (Bernice) McCloskey of Elm Grove, Wisconsin is now serving her fourth term as the Midwest treasurer. She is a native Wisconsinite and a charter member and a past president of the Kettle Moraine Geological Society. She has had experience in the fields of law, real estate and banking. Bernice and her husband, Joe, are active members of the Elm Grove Lutheran Church.

Secretary of Midwest is Jean Reynolds who has been serving in the capacity for eight years. Jean lives with her mother



Terry Huizing
President



Howard J. Taylor
1st Vice-President



Miss Jean Reynolds
Secretary



Miss Hazel Kuntz
2nd Vice-President



Bernice McCloskey
Treasurer

in Clarendon Hills, Illinois and has been with the Federal Reserve Bank in Chicago for 29 years. Her present position with the bank is a senior cost accountant. Jean is a graduate of Northwestern University.

A new solution to an old problem

by June Zeitner

The state of Michigan has the most clubs in the Midwest Federation, almost 50. In many states with lots of clubs, a regional organization has grown up which is entirely separate from the Federation and is not a recognized part of AFMS. This is not so in Michigan. The Midwest Federation is the strong organization here and a vital part of all federation activities. This close alliance makes for a stronger Regional Federation and a stronger AFMS. Organized under the State Director, Bud Nicholls, there are ten Assistant Directors who each serve as the link between the federation and the immediate area clubs.

In order to assure that all clubs understood the Midwest and American Federations and were continually informed on Federation programs, activities and news, as well as the events of interest within the state, a Michigan State Newsletter was started with Joyce Hanschu as editor. But the old problem of finances reared its ugly head. Naturally the Midwest Federation could not underwrite a newsletter for Michigan, important as it was, because the Midwest also has State Directors in nine other equally deserving states.

So, here is where the new idea came to the rescue. A new club was formed, the Michigan Geology and Gemcraft Society, for the purpose of helping the Midwest Federation representatives in Michigan and to increase the effectiveness of the Federation programs by extending personal and financial aid for the work of the State Director and his assistants. The first project, under the leadership of Lee Kirby, president of the new club, is to raise money to continue the useful Michigan State Newsletter. MGGS is planning a raffle for this purpose which will be held in connection with a Workshop/Seminar sponsored by the club.

The Society has stressed that it exists to encourage and enhance the Federation and its programs. It will help expand Federation activities in the state, thus benefitting all the Michigan clubs.

Larry Bailey, MGGS Seminar Chairman, is planning a comprehensive two day event for April 5 and 6, 1975 at Washtenaw Community College in Ann Arbor, with workshops on exhibiting, junior activities, bulletins, minerals, fossils, and lapidary. This promises to be a constructive new step for Michigan and the Midwest.

OUR STAMPS ARE BEST SELLERS

Mrs. Lillian Turner, AFMS Stamp Chairman, reports that the beautiful AFMS mineral stamps are virtually a sell out. Most larger post offices have sold their entire supply with some customers reportedly stocking up with as many as 500 sheets of stamps.

Many club bulletins in all the state are using the mineral heritage stamps on their bulletins, and Mrs. Zeitner reports that the petrified wood stamp is a run away favorite. The federation is retaining a set of bulletins with the mineral stamps.

Mrs. Turner reported that Mrs. Jamieson of the Citizens' Stamp Committee in Washington is well satisfied with the reception of this colorful series of stamps. Although it is too soon to expect another block of stamps it is not too soon for AFMS members to start planning for the type of stamp they would like to work for next. It is hoped that eventually all aspects of the hobby may be honored.

President's Message

Let's reopen collecting areas

Are you interested in reopening collecting areas? Of course you are... and so is the MWF. We are looking for volunteers to help with a brand new and special group whose objective can be stated quite simply to reopen and keep open those collecting areas in the Midwest which enable our membership to learn more about mineralogy, geology, archeology, paleontology, and preserve for the future the natural wonders found therein.

Yes, we are asking you to write and let us know of your interest. The task will require the thoughtful leadership of many diverse talents throughout the MWF, people from every state who are willing to apply their skills to the social, economic and governmental conditions which will continue to close collecting areas unless we act now.

Write if you have a background in law, experience in government, legislation, or insurance, if you are acquainted with the owner of a collecting area or if you want to be involved because collecting is important to you. Together through regional planning, legislative action and just plain persuasion we can one-at-a-time reopen collection areas. *Terry Huizing*

New Midwest Appointments

Illinois State Director
Minnesota State Director
Missouri State Director
Wisconsin State Director
Directory Chairman
Legislation Chairman
Uniform Rules Chairman
Boundaries Chairman
Liaison MWF - CCF

Wesley Greenfield, 817 - 18th Ave. "A", Moline, Ill. 61265
Rex Webb, 2600 W. 87 1/2 St., Bloomington, Minn. 55431
Lucille Bishop, 2465 Mullanphy, Florissant, Mo. 63031
Harold Steinke, 924 Waugoo Ave., Oshkosh, Wis. 54901
Charlotte Ferguson, 51 Pleasant Hill Rd., Milford, Ohio 45150
Theodore Cadeau, 283 Ridgewood Ave., Dayton, Ohio 45409
Betty Crawford, 1119 Seminole Ave., Mansfield, Ohio 44906
Lee Kirby, 3550 Embarcadero, Drayton Plains, Mich. 48020
Mel Berry, 44 Elwood, Mt. Clemens, Mich. 48043

LINCOLN GEM AND MINERAL CLUB, INC.
P. O. BOX 5342, LINCOLN, NE. 68505

The purpose of this corporation shall be to study, promote an interest in, and disseminate knowledge of lapidary and various Earth Sciences including but not necessarily limited to geology, paleontology and mineralogy. It shall be a particular purpose of the corporation to provide education in these fields to its members and the general public, particularly youth and student groups.

MEMBER: Midwest Federation of Mineralogical and Geological Societies (MWF)
American Federation of Mineralogical Societies (AFMS)
Nebraska Association of Earth Science Clubs, Inc. (NAOESCI)
Community Arts Council of Lincoln (CAC)

Regular Meetings: 4th Saturday of the month, 7:30 P.M., September thru May
W. O. W. Bldg., 732 S. 27th St., Lincoln, Nebraska

1974 ELECTED OFFICERS:

President	-----	Ralph Ulrich	3909 Pace Blvd.	Lincoln, 68502	423-0484
1st Vice Pres.	---	Frank Rule	6333 Kearney	Lincoln, 68507	466-1697
2nd Vice Pres.	---	Larry Bigley	6126 Hartley	Lincoln, 68507	466-0211
Rec. Secretary	---	Nelda Oliver	5700 Otoe St.	Lincoln, 68506	489-5222
Treasurer	-----	John Harrison	Hickman, NE.	68372	792-3825

1974 BOARD MEMBERS: (Elected)

Norma Miller	-----	931 Cottonwood Dr.	Lincoln 68510	489-8840
Tom Simmons	-----	2970 South Street	Lincoln 68502	488-1619
Howard Taylor	-----	910 New Hampshire	Lincoln 68508	432-3707
Marie Wells	-----	2940 Vine Street	Lincoln 68503	435-6758

STANDING COMMITTEE CHAIRMEN:

Liaison	-----	Norma Miller
Hospitality	-----	Virginia Green
Refreshments	-----	Stan & Hazel Greenwade - Don & Edna Carter
Membership	-----	Marita Bigley
Vaja Con Dios	-----	Marie J. Carveth
Historian	-----	Frances Tracy
Librarian	-----	Joella Olson
Housing & Property	-----	Frank Rule
Field Trips	-----	Larry Bigley, Tom Simmons, Don Carter
Education	-----	Roger Pabian
Program	-----	Florence Eoring
Calling Committee	-----	Wilfrid & Ollie Wittmann
Community Arts Council	-----	Rev. & Mrs. Raymond Pfeiffer
NAOESCI Reporter	-----	Luella Paul
Scholarship	-----	Julius & Myrtle Young
1974 Swap	-----	Don Duckett
1974 Show Director	-----	Irl Everett

STEERING COMMITTEE 1974 SHOW - Ralph Ulrich, Howard Taylor, Bruce Simon, Irl Everett

PUBLICATIONS CHAIRMAN ----- Art Howlett


PICK & SHOVEL STAFF ----Editor - Evelyn Ulrich Phone 488-9051
3521 So. 48th St., Lincoln, NE 68506
Typist - Rosa Lee Wright
Publisher - Phyllis Parks

Contributions from members are welcome and needed. Deadline for material is the 5th of the month. Please send to the editor.

Articles published in THE PICK & SHOVEL may be reprinted if credit is given the author and the bulletin, and a copy of the publication is sent to the editor.

Lincoln Gem & Mineral Club
Box 5342
Lincoln, NE 68505

1974



NON-PROFIT ORG.
U.S. POSTAGE
PAID
LINCOLN, NE
PERMIT NO. 176

MEMBER: Community Arts Council

Exchange Editor: Evelyn Ulrich
3521 S. 48th St.
Lincoln, NE 68506

Maurice & Frances Tracy
3601 South Street
Lincoln, NE 68506

A MAMMOTH EVENT

NATIONAL GEM & MINERAL SHOW

LINCOLN GEM & MINERAL CLUB - 16th ANNUAL SHOW - June 13-16, 1974

Host to: The American Federation of Mineralogical Societies Show & Convention
The Midwest Federation of Mineralogical & Geological Societies Show
and Convention
The Nebraska Association of Earth Science Clubs Annual Show and Convention

THE PLACE TO GO IN 1974 - NEBRASKA STATE FAIR GROUNDS - June 13-16, 1974
LINCOLN, NEBRASKA

