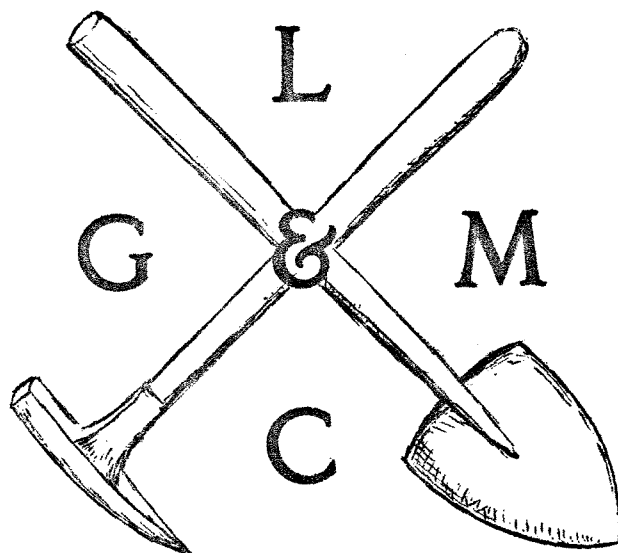


THE PICK & SHOVEL



OCT - 1974

OFFICIAL PUBLICATION OF

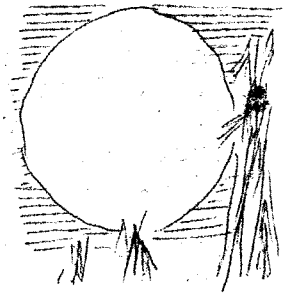
LINCOLN GEM & MINERAL CLUB

HOST OF COMBINED

MWF-AFMS NATIONAL SHOW AND CONVENTION
AND NEBRASKA STATE SHOW

JUNE 13-16, 1974
LINCOLN, NEBRASKA

CALENDAR



Regular Meeting-----Sat., Oct. 26, 1974; 7:30 p.m.
WOW Bldg., 734 So. 27th St.

Program-----The program will be presented by
Dr. Robert Nelson of the University
of Nebraska Geology Dept. His sub-
ject will be Crystal Systems--How we
use them for mineral identification and
how crystals are formed.

Rock Feature-----Bring your favorite crystals for display.

Refreshments-----Will be served by the Refreshment Committee.

Business-----The Nominating Committee will present a slate of
nominees for the 1975 Board of Directors.

Board of Directors Meeting, Thursday, Nov. 7th, 7:30 p.m. at the home
of Norma Miller, 931 Cottonwood Drive.

DATES TO REMEMBER

Oct. 19-20, 1974	Hutchinson, KS	Hutchinson Gem and Mineral Show
Oct. 19-20, 1974	Louisiana, MO	Pike County Gem and Min. Soc. Show, Middle School Gym
Oct. 19-20, 1974	Joliet, IL	Joliet Gem Club Show, Joliet Junior College
Oct. 25-27, 1974	St. Anne, MO	McDonnell Douglas Gem and Min. Show, Northwest Plaza Auditorium, Lindberg and St. Charles Road
Oct. 26-27, 1974	Sumner, IA	Northeast Iowa Rock Club Show
Oct. 26-27, 1974	Tulsa, OK	Tulsa Rock and Mineral Soc. Inc. Show, Tulsa Fairgrounds
Nov. 2- 3, 1974	Chanute, KS	Chanute Gem and Min. Soc. Show, Central Park Pavilion, S. Forest Ave.
Nov. 8- 9, 1974	St. Louis, MO	St. Louis Min. and Gem Show, Electrician Hall

REMINDER : By vote of the membership at the September meeting the deadline for
paying dues will be January 31, 1975 instead of March 1st. Lets all remember and
get our dues for 1975 paid in November and December before they become due. In
case you do not remember the amounts -

Registration is \$1.00 per new member (paid only upon initial membership
but assessed again if your membership becomes delinquent.) Adult dues are
\$3.00 per year payable by January 1st. Junior memberships are \$1.00 each and
family membership is \$7.00 per year.

APOLOGIES - from the publisher for the poorly done copy of Washington Scene from
the AFMS Newsletter. In the interest of sharing some of the many good materials
received by the club, we have from time to time copied pages or clippings such as
this with only fair results on the equipment which we have. I will share with you
the fact that the cost is only for the $\frac{1}{2}$ ream of paper used as the Thermofax
stencils were donated by Roger Simmons and the machine used to cut or burn the
stencil is my own. Could the club be ready for different copying equipment or
more efficient machines? I'd sure vote for it. (Phyllis)

LAST MONTH...You missed an unusually good meeting if you didn't make it to the September meeting. There were 52 members and 12 guests present. The guest list included the following: Robert L. Johnson, Mr. & Mrs. E. L. Johnson, Carol Zastera, Gene and Janis Eno, Mr. Ray Bennett, Clyde L. Van Doren, Dr. & Mrs. V. Calvin McKim of Capitola, Calif., and Mr. & Mrs. Earl Fallbeck of Mora, Minn. The McKims and Fallbecks were guests of J. D. & Myrtle Young.

The Club voted in favor of changing Item d- Sec. 2 of Article I of the By-Laws. Dues may be paid November 1, and will be delinquent Jan. 31 instead of March 1. Membership will be forfeited if dues are not paid by Jan. 31.

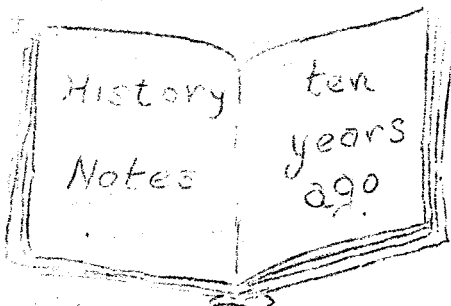
A nominating committee was elected to seek nominees for the 1975 Board of Directors. Phyllis Parks is the chairman, and George McGinnis and Howard Taylor will assist her.

Beautiful blown glass door prizes were donated by Gene Eno. Lucky recipients were: Adeline Nolde and Carol Zastera.

A very interesting illustrated talk was given by Dr. Lloyd Tanner, Coordinator of Systematic Collections for the University of Nebraska. He showed slides of places visited in Egypt during a joint expedition of the University of Nebraska and Yale University in search of Aegyptopithecus Zeuxis--ancestor of the earliest apes. He told about other prehistoric animals peculiar to Africa and found nowhere else in the world. Dr. Tanner offered to identify fossils for members of the LGMC if they so desire. He said that Dr. Schultz, who is on a geologic mission in Paris, sent his regards to the Club.

Records of songs composed and sung by Gene Eno and Carl Wells were played after Dr. Tanner's talk. They are Rockhound songs - very clever, with lively tunes. They are sure to make a big hit.

Many beautiful and interesting displays were set up for our admiration. An especially attractive case of pyrites was shown by Don Carter.



Our October meeting was held at Roberts Dairy Party Room. It was announced that G. W. McKinney was the winner of a prize for selling the most advance show tickets.

Gene Eno reported on the first dig of a project of excavating a large prehistoric monster, as yet unidentified, for the University of Nebraska under supervision of one of their staff.

VAJA CON DIOS - May God be with you

Cards were sent to the following:

- Clyde Benhan - (Get Well)
- Rev. Raymond Pfeiffer - (Get Well)
- Flossie Litzenberg - (Get Well)

NOTICE Dues may be paid Nov. 1. - Dues are delinquent Jan. 31. Pay before Jan. 31. - Don't forfeit your membership.



THE PRESIDENT'S MESSAGE

To you many members who are not already involved in running the Club business, this is a golden opportunity to do something about initiating your ideas into action. Just call Phyllis Parks, Howard Taylor, or George McGinnis and offer to be a candidate for office. I am sure that you will find the Club members willing to help and eager for leadership after you have been elected to the Board.

The program for the October meeting deals with crystal structures. We are fortunate to have this opportunity, and I urge each of you to set a high priority on this meeting. Yes, our Club meetings do compete with many other worthwhile activities. Thus we must assign priorities to each function. I have heard several members express preference for programs closely related to basic knowledge about the hobby. This is one example of such a program, and I appreciate the effort Florence put forth to make it possible.

It is not too early to start planning for the 1974 Christmas party. I would like hearing your preferences, and perhaps we need to change the program here a little too.

I am pleased that the members expressed a renewed interest in field trips at the September meeting. I believe we need to emphasize the down to earth (pun) interests of our members now that our big public attention getter is history, i.e. the 1974 National Show. Let's see how many of you can come up with ideas for classes in mineral identification, lapidary work, etc. We will try to organize and conduct whatever classes or special interest groups you particularly want. All we need is the support of the members.

With the above outlook, I believe it was a good move when you voted affirmatively to change the bylaws so that January 31 is the date that the delinquent members will be discontinued on our lists. It seems appropriate that we get the dues paid on time and have all of the Club business done before February 1 so that we can turn our energies toward classes, special interest assemblies, field trips, etc. I believe that members who intend to be active in Club affairs and who are planning to be involved in Club programs can manage to pay their dues before January 1 when they become past due. This Club is like everything else in creation, it cannot stand still but must progress and expand or expire.

--Ralph Ulrich, President

NOTICE: These items will be brought before the LGMC members at the October 26 General Meeting. Action taken at the Oct. 14, 1974 Board Meeting.

1. A motion by the Board of Directors that we recommend to the membership at large that the LGMC elect a study committee to investigate the possibility of hosting a combined National & Midwest Show in 1980. Motion carried unanimously.
2. A motion by the Board of Directors that we recommend to the membership at large that the LGMC sponsor a Midwest Federation Rockrama in 1976 as a Bi-Centennial celebration. Motion carried unanimously.

EDITORIAL...With the approach of fall and winter, more time will be spent indoors. Of course most of your leisure time will probably be spent working on your "finds" of the summer. However, some of that time could be used to read some good literature related to the hobby. There are many good books and periodicals in our Club library, as you are aware of, but did you know that the Bennett Martin Library has a number of excellent books on geology, gems and minerals, field guides, and books on metal work, jewelry-making, gem cutting, faceting, etc.? It would be well worth your while to read some of these fine books during the winter months.

A very interesting book is volume 3 of the Smithsonian Scientific Series--"Minerals of the Earth and Sky." Its code number is 508- SM6- V3. It is found on the second floor of the library. It gives information concerning many gems and minerals that is not found in most books on the subject. Here is a sample of facts concerning the discovery of diamonds: Diamonds in Africa---Children gathered the brightly colored pebbles and scattered them about the yard when their interest waned. A farmer's wife noticed a shining pebble, but didn't bother to pick it up. A neighbor, hearing about it, became curious thinking it might be of value. A search for it was made, and it was given to a traveling trader who offered to find out what it was. Dr. Atherstone, one of the foremost mineralogists of the colony, pronounced it a genuine diamond. It weighed $21\frac{1}{2}$ carats. It was purchased by the governor of the colony.

Later on a shepherd boy found an $83\frac{1}{2}$ carat diamond. He sold it for 500 sheep, 10 oxen and a horse. It was later bought by the Earl of Dudley for 25,000 pounds and bore the name, "The Star of Africa."

In South Africa a flawless diamond of the finest blue water, weighing 3,024 carats and as large as a fist, was picked up by a manager of the Premier mine during an inspection tour. It was known as the "Cullinan." When King Edward the seventh saw it, he remarked as he held it to the light, "I should have kicked it aside as a lump of glass if I had seen it in the road." Nine stones have been cut from it--one $516\frac{1}{2}$ carats and another 309 carats. Seven other fine stones ranging from 92 to $4\frac{1}{2}$ carats were furnished by this monstrous crystal. The largest stone was used to adorn the scepter of the British king, while two others are in the Queen's crown.

There are other fascinating stories about the discovery and mining of diamonds in Borneo and Brazil. Locations of diamond producing areas in the U.S. are given, and there is quite a lot written about diamond mining at Murfreesboro, Arkansas. The formation where they are found is very much like that in Africa, and many of the diamonds found there are of high grade.

VALLEY OF THE BONES

Big Bone Lick State Park in Boone County, Kentucky, has been called "the nation's outstanding prehistoric boneyard." Until the Ice Age, the spring-fed salt lick was a watering hole for thousands of mammoth beasts. An explorer in the area in the 1700s reportedly raised his tents on mastodon ribs, used the vertebrae for benches, and left with 10-pound teeth and 11-foot-long tusks for souvenirs.

--from Memphis Archaeology and
Geological Society Newsletter



GLENNA'S GLEANINGS

Irl & Lois Everett are proud grandparents to a baby girl, Amy Lynn, born to Mr. & Mrs. Gary Everett in mid-July. Congratulations!

Lillie Lewis attended the September meeting sporting a "shiner" which she acquired, along with various cuts and contusions, in a fall at work. She and John report the approaching marriage of their son, David, to Miss Gayle Smith on December 6th.

Hazel and Art Howlett report they have spent the past weeks taking trips to various parts of this United States.

Frank and Ruth Krejci spent part of their vacation near Hot Springs, Ark. at Colemans Mine, digging for quartz crystals. Ask Frank to tell you about his meeting up with a bulldozer.

Florence Boring, on a trip to San Francisco, photographed the various parks dedicated to literary friends of the late Dr. John Neihardt. Perhaps we might persuade her to share them with us at some future meeting.

Rev. and Mrs. Pfeiffer visited with Father Greving at West Bend, Ia. on their way home from a trip up the North Shore of Lake Superior this summer. At present, Rev. Pfeiffer is recuperating from surgery. He'd better hurry and get strong as he and Mrs. Pfeiffer are anticipating a November trip to Lima, Peru, where they will go with a group of twenty members of the Nebraska Synod to dedicate a Maternity Hospital. They will spend twelve days touring the Inca ruins and Lake Titicaca.

Flossie Litzenberg is the possessor of a new knee joint since last Thursday. This is the first of two which should make her able to do some of that rockhunting she loves so much and has found it so painful to do lately. She is able to be up and about, exercising, in Rm. 324 at Bryan Hospital.

Marie and Lynn Wells are hosting her mother while she recuperates from pneumonia.

Burton Barnes and the McGinnises represented LGMC at the Lincoln, Mo., swap the last week in September. There were others from various clubs in Nebraska, however.

Last, but not least, many were saddened to see only fifty-two members present at the last rock club meeting. Let's all turn out for the October affair and support this hobby club once a month.

FOOTNOTE: Add to the list of stay-at-homes Larry Bigley. Just discovered that our 2nd Vice-President, Field Trip Guide Planner and Printer, Asst. Publisher for the Pick and Shovel, and whatever else we can figure out for him to do, is again sporting a cast. This time it goes up to the knee as Larry was hospitalized for surgical repair on his ankle. No driving of non-automatic cars & trucks --but he appears to be sorting and cleaning up some of his specimens from field trips so his time will be well spent. Larry says if you want any field trips in the next two months you will have to find other leadership.

pnp

BADLANDS

Samples and sacks, dirt and rocks,
 Shoes that are worn clear through to the socks;
 Hand levels, strings and volcanic shards;
 Stumble and fall a hundred yards
 You wonder as you slide down the siltstone slope
 Whatever happened to the knots in the rope?
 Stop if you can, you just whiz by
 A fossil skull seen from the corner of your eye.
 All of this is part of the well known folly
 When your profession is vertebrate paleontology.

Now you have reached the end of your trip,
 The seat of your pants has a tremendous rip,
 Heat waves from your posterior are now set free
 You've shredded your palm, and strawberried your knee.
 Make shade with your hand and study the slope,
 Strain your eyes with fervent hope.
 Back up the hill, a laborious jaunt
 To the spot on the slide, huh! - An oreodont -,
 Remove with effort the shellac from the sack,
 Take the trusty old pick and
 Give the matrix a smack, Your balance you've lost
 and swearing is sin
 Brace for the worst,

you're sliding

again. ---L. G. Tanner

Requested by Program Chairman Florence Borina and our sincere "Thanks" to Mr. Tanner.

Litterbugs are not a modern phenomenon. Archeologists report that when an ancient ship took shelter in a bay, the crew strewed the sea floor with pottery sherds and broken tool - but that is still more reason to be a clean rockhound. Don't be a litterbug. Keep America Beautiful.

-via Korn Krib News

Here's a tip for campers: Put each egg in a small plastic bag and then put it back in the egg carton. If any eggs get broken, the bags will hold them, and they can be scrambled.

-via The Lapidary

Marcasite and pyrite should never be stored in white paper or boxes because of chemicals used in its manufacture. Brown paper or boxes should be used.

-Earth Science via Sooner Rockologist via Slab and Gab

Taxpayer: One who doesn't have to pass a civil service examination to work for the Government.

-via Rock Vein

LONESOME FLATLANDS REVISITED

By Julius D. Young

You are invited to review a recent trip enjoyed by my wife, Myrtle, myself, and our friend Florence Boring. To explain the reason for our most distant objective let us go back in western history 151 years to the Grand River forks in northwest South Dakota. We quote from John Neihardt's The Song of Hugh Glass, MacMillan, 1915.

Snorting - a-haunch above a breakneck hill,
The horse stopped short - then Jamie was aware
Of lonesome flatlands fading skyward there
Beneath him, and, zigzag on either hand,
A purple haze denoted how the Grand
Forked wide 'twixt sunset and the polar star.

The grizzled hunter-trapper, Hugh Glass, had just been kayoed by an angered she-grizzly (Ursus Horribilis). Hugh's devoted young friend, probably Jim Bridger, discovered the tragedy and soon was joined by the up-stream Ashley-Henry band of 80 trappers and adventurers.

Stripped of his survival gear, then abandoned by his companions, this gray old "man in the wilderness" revived and began his amazing crawl back to civilization at Fort Kiowa, and a later showdown with his betrayers. This tale, immortalized by our late honorary Lincoln Gem Club member, has been repeated by other writers and movie producers.

Now, advance to August, 1923, a century later. Myrtle and I, just married at Murdo, South Dakota, accepted an invitation to join Dr. Neihardt and the Neihardt Club to build and dedicate a small monument to commemorate the "stark saga-stuff" of 1823 at the forks of the Grand. My own acquaintance with the Poet Laureate began earlier at Wayne, and now Myrtle was to meet him. Thus began our half-century of friendship which led to his becoming a most delightful guest in our Lincoln home the last seven years of his amazing life.

After the monument ceremony in 1923 we accompanied Neihardt while he gathered local information for his Song of the Indian Wars which became one of the five narrative "songs" in his A Cycle of the West. These deal with the entire westward movement from 1822 to 1890, ending with the tragic Wounded Knee slaughter, where "triumphant in the blindness of defeat, the iron-footed squadrons marched away."

In 1967, and again in 1968, with Dr. Neihardt we returned to the Hugh Glass country for several speaking engagements, and nostalgia. We had planned to go again in 1973 for a ceremony at the recently opened Hugh Glass Park. Neihardt's health at 92 years did not permit such a trip, so I went alone to participate in the dedication program - an honor not dreamed of in 1923.

The Hugh Glass Park borders the "lonesome flatlands" of 1823. They are now mostly under fathoms of water in the Shadehill Reservoir with its 90 miles of shoreline. This recreation area provides for great fishing, hunting and water sports. The attractions for rock-hounds are "fabulous," and easily found not far away.

--continued next page

LONESOME FLATLANDS REVISITED, continued

The Petrified Wood Park at Lemmon is said to be the only one of its kind anywhere. During the depression in the 1930's jobless people gathered hundreds of tons of "ghosts of an ancient forest" and assembled them in countless structures covering several blocks near the center of the town. More recently an elderly man with modern power equipment piled over 200 tons of giant petrified stumps near the Shadehill post office on the Grand River. Some weighed over seven tons each - too big for the common rockhound to tote. (Leverite - for good reason!) A successful jewelry factory is at Lemmon.

In recent years Florence Boring has been with us and Dr. Neihardt on many trips, the most distant being to Salt Lake City in 1969 for the National Gem Show in which Neihardt was an exhibitor. She was the Poet's manuscript typist, with unselfish devotion, as he penned his autobiography in our home. In all these travels the Neihardt books have been open texts because of the many places and events described. He often added timely bits not included in the books - a treasured bonus.

Florence's first visit to the Grand River area was this summer. From there we next visited the Slim Buttes battlefield "where like a god-built stadium the tiered, age-carven Slim Buttes watch the Rabbit's Lip go groping for the ocean." Here on September 9, 1876, after General Crook's famous "horse-meat march," "in the drip and ooze of sodden skies the battle raged." Chief American Horse was killed, - Crazy Horse survived; so did General Crook - the "Gray Fox."

In the lignite associated with the Slim Buttes a trace of uranium is known. In the area near the town of Buffalo oil and gas show signs. The famous killer-wolf, Three Toes, was captured there years ago - and sheep men were relieved!

In the Black Hills we paused at Mount Rushmore. Many of us heard Lincoln Borglum and June Zeitner speak at our National Show in Lincoln. The "four faces" now lack the so-called "5th face," our own much-photographed personal friend, Ben Black Elk, who died in 1973 before Neihardt's death. He was the interpreter for his father, Nick, and Neihardt in their series of interviews in the early 1930's, out of which came the incomparable book, Black Elk Speaks.

Between Rushmore and Custer the great Crazy Horse Memorial is being carved by the sculptor Korczak Ziolkowski. It is said to be the largest of its kind in the world. Here we enjoyed the new Indian museum, the visitor center, and a renewal of our acquaintance with the sculptor's family.

Near Crawford we joined the Lincoln Gem Club field trip in progress. We found nothing spectacular, but Florence found an ancient mountain sheep skull - inhabited by buzzing yellow-jackets. We thought of the rattlesnake in the petrified wood in our recent national show!

At Fort Robinson we saw where Chief Crazy Horse was killed in 1876. Our previous visit there with Neihardt was a classic. With a quote from his "The Death of Crazy Horse" we now return you to Lincoln.

Who knows the crumbling summit where he lies
Alone among the badlands? Kiotes prowl
About it, and the voices of the owl
Assume the day-long sorrow of the crows,
These many grasses and these many snows.

The following poem is borrowed from "The Shawmish Rocktawk." It is quite appropriate at this time since our Nominating Committee is hard at work preparing a slate of nominees for the Board of Directors.

Who, me run for office? No, thanks!
The president's job - that should be Frank's.
Listen now, I have a few suggestions to make
How about display cases - 'twill only take
A couple of evenings for someone to make.

Program chairman? I don't see how
I can manage that position just now.
But how about getting good speakers this year?
Or have a demonstration on silver work here?
You bet I'll attend every one, never fear.

Bulletin editor? Oh, I can't write
A decent article - mine sound so trite.
But can't we have lots more rock cutting tips,
A column for news and some humorous quips -
And write something about your rock-hunting trips?

Display table? I like it fine,
Oh, no, that selenite isn't mine.
My minerals and gems are all packed away.
Anyway, I was much too tired today -
Do you realize how much rocks weigh?

I'm in good standing - pay my dues;
Never fail to give you my views.
Meeting night comes and there I will be,
I'm present, please note, for all people to see.
Gee, don't you wish there were more members like me?

(P. S. My good intentions last for awhile,
But if you were to put me on trial
I'll have to admit that I've been in low gear
Whenever they asked for a work volunteer.
Really, let's promise to do better next year.)

--via The Shawmish ROKTAWK

Seven Steps to Stagnation

1. We've never done it that way.
2. We're not ready for that.
3. We're doing all right without it.
4. We've tried that once before.
5. It costs too much.
6. That's not our responsibility.
7. It just won't work.

--via Slab and Gab

According to legend, Death Valley miners worked the graveyard shift at the Coffin Mine, near Tombstone Flat in the Funeral Mountains.

ROCKHOUND'S BUSINESS TRIP - Phyllis, Jim and Linda Parks

No field trips, very few rock shows, and a minimum of vacation for over a year -- we finally combined all three with a scheduled convention trip to view and learn about the 1975 line of Honda motorcycles and accessories, Sept. 18, 19, 20.

We left Lincoln two days early so we could take the long way round for destination 'Las Vegas Honda Meeting.' Saturday, Sept. 14, found us crawling along at the Federal 55 miles per hour for almost 14 hours. We made a short stop at Sundberg's Jade Factory, browsing the fine new Jade & Gift Shop across the street from the familiar location. Many fine materials to select from. On to Little America for the nite - passing around Rock Springs so we did not check out Mr. Tintsky's shop. Sunday the beautiful ride on I80 through Ogden, Utah and up to Kimberly, Idaho for a visit with rockhound friends from the Magic Valley Gem Club. They were in the midst of annual harvesting of seed beans but took time to talk rocks, share some of their recent finds, and a liesurely ride to "Balanced Rock" which we had not seen. We stopped at some familiar rock shops, crossed the Snake River Canyon, viewed the Thousand Springs, and back past the spot where Evel attempted his big jump. If we could have spent just one more day with them we could have shared a delightful field trip - but business called.

We headed for Las Vegas by way of Jackpot, Nevada (stopping for a short look at the road cut where we had years before picked up "Rabbit Springs Geodes which are lined with chalcedony. We were pleased to find several small ones and some nice pieces.) The rest of US93 south thru Nevada was unfamiliar to us and we enjoyed the desert, the mountain passes, the Joshua Trees and other growth. We viewed the huge Endicott Copper works. Wednesday morning we had our first sight of fabulous Las Vegas with all of the giant hotels and motels, and door-to-door gambling casinos. We spotted the familiar Big Boy Restuarant for a mid-morning lunch and just across the street a sign proclaiming rocks, gems, silver work and Indian jewelry. They very willingly shared information about the Gem Show in progress, as well as directions to the site of Hoover Dam. The dam, and Lake Mead were as interesting as we had anticipated - (a 2 county car passed us as were parked there, waved and honked, but we could not see whatever Lincolnite happened to be at the same spot at that same time.) Linda really enjoyed seeing the masses of carp feeding at the marina.

Back to check in at the Las Vegas Hilton and spend some time at the Honda information centers, loading up with catalogs and pamphlets about the motorcycle business and its possibilities. When we tired of this we walked across two parking lots to the Convention Center where the Gem Show was being held in conjunction with the Junior Chamber of Commerce Fair. We saw some dealers who had been at our big show, some new ones with materials we had never seen - good old silver pick -. The displays were quite extensive and very interesting. It was a very friendly show. I looked up Editor Betty McGreless of "Gem Time" with whom we have been exchanging bulletins for several years. It was real pleasing to have her recognize my name from my Honda name tag and to be welcomed so very warmly. Would have liked to stay for their field trip on Saturday for cutting material, but maybe we can go through again some day and take her up on her generous offer.

As soon as the "Honda Spectacular" ended we headed for California and a visit with Jim's partner, formerly of Lincoln, and our two days with them stretched into six. They took us to motorcycle races at Orange County Fairgrounds, to Sea World at San Diego, touring the countryside, the beaches, and to a nearby rock shop. Silver pick again but much easier for the non-rockhound natives to spot. We visited Balboa Park in San Diego which I remembered from 1938 - a huge aerospace museum there took our fancy then to the famous San Diego Zoo. Wednesday we spent at Disneyland seeing just a few of its interesting points. Linda swam in the Pacific sans sunshine - we saw no sunrises or sunsets. decided California sun shone bankers hours 9 to 4.

Thursday we were back on the highways, logging a total of 3,695 miles, lots of good memories, viewmaster reels, some rocks and gems, and a desire for another vacation - at least Phyllis & Linda are ready to go again.

THE SCHOLARSHIP FUND REPORT

By Myrtle Young
Chairman



I want to thank those of you who have faithfully brought stamps and Betty Crocker coupons to our regular meetings, and those of you, unable to attend, who have mailed them to me, direct. Our Lincoln Club is still far below our quota rating for the Scholarship Fund. We can fix that. Rout out your own collections and ask friends and relatives for theirs. Explain to them that this simple gesture, taken collectively, mounts up to real assistance for deserving university students struggling to complete their education.

A review of collecting rules may be helpful.

1. Large commemorative stamps (the biggest part of the income from stamps comes from these large commemorative stamps).
2. Large and middle-sized foreign stamps.
3. Large and middle-sized Air Mail stamps.
4. Precanceled stamps of all sizes and denominations including precanceled Christmas stamps.
5. Special stamps as follows: Duck Hunting License stamps; United Nations stamps; \$1.00 Airlift stamps; Documentary stamps of all sizes and denominations; 8¢ Champion Liberty stamps; Certified Mail stamps (with figure of postman); First Day covers--please send the complete envelope; Stamp albums; small rare stamps such as 16¢, 19¢, 24¢, \$1.00, \$2.00, \$5.00, etc.; Blocks with and without plate block numbers; also single stamps with plate block number.

Please do not save small regular stamps of low denominations, or common airmail stamps, or regular Christmas stamps.

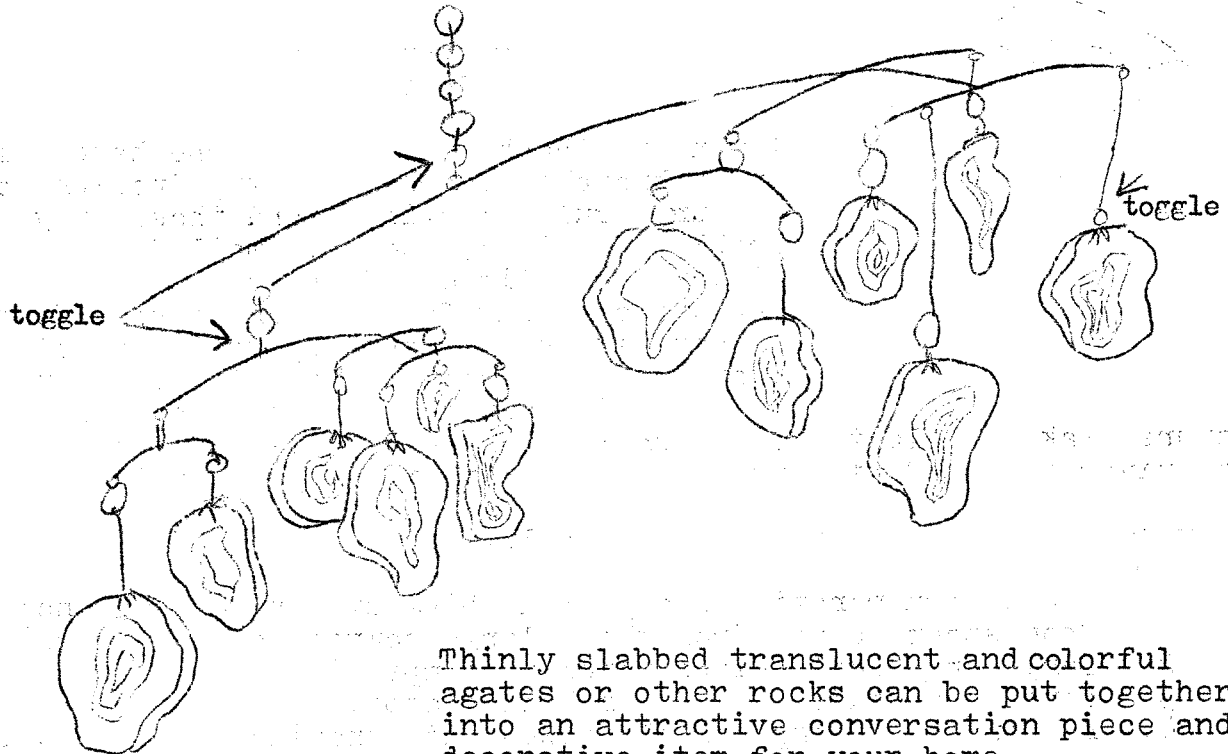
HOW TO PROCESS STAMPS: Cut from paper, leaving about $\frac{1}{4}$ inch margin of paper around the stamp.

DEFECTIVE STAMPS: Please do not save any defective stamps. No clipped tops (the automatic letter openers often take the top off the stamp); no torn edges, no missing perforations, no damaged backs.

It is always fair weather for collecting stamps and coupons. Bring a bagful to the November meeting.

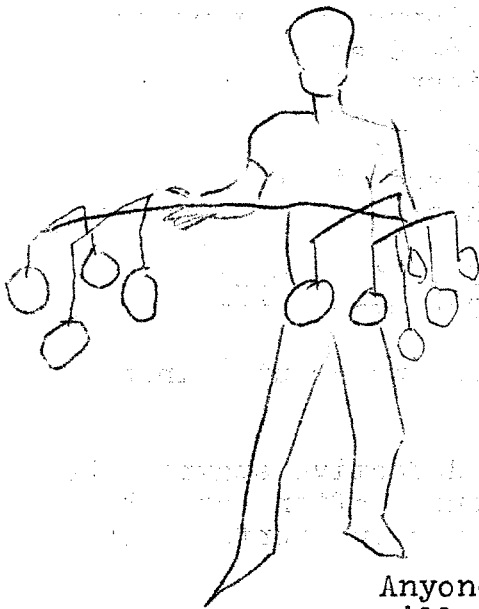
Sodalite greatly resembles lapis except that it takes a much higher polish. The general texture shows patterns or veins of red or white which greatly add to the overall effectiveness. Much less expensive than lapis and available in large pieces, it has a rich, royal blue color. Hardness $5\frac{1}{2}$ to 6. --from GEM TIME, via T-TOWN ROCKHOUND

CHOICE SLABS.....TO MAKE A MOBILE



Thinly slabbed translucent and colorful agates or other rocks can be put together into an attractive conversation piece and decorative item for your home.

Use a brass rod and put a toggle on every connection, so that each stone turns individually as well as in groups. Take care to have clearance between groups if you don't want wind chimes.



Use bell caps and chain links on edge of slabs to fasten the slabs to the toggle. Nylon fish leader is excellent to fasten toggle to the brass rod (this permits sliding slabs along rod until each unit balances).

Put all sections together and slide along the main rod until you find the center of balance. Glue each nylon fastening to the brass rod.

Anyone who has worked with mobiles of other kinds will create his own version of the mobile described above. Think of the hours of fun in planning, selecting material, cutting and polishing and then the assembling. Suddenly, the project is finished! Beautiful!

KCCL Club, via The Jaspilite

A generation ago most men who finished a day's work needed rest; now they need more exercise. --Rock-apTeer.



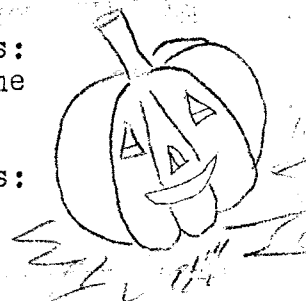
JUNIOR PAGE



ADD 'EM UP
by Ed. Kolecka

Here's a little puzzler that rockhounds should enjoy. Just put together the words called for to form the names of minerals, gems and other words associated with the rock hobby.

1. A flower plus a liquid measure is:
2. What a rolling stone won't gather plus an exit is:
3. A chopped down tree plus a ship's mast is:
4. The source of all energy plus another name for rock is:
5. A jungle beast plus ego is:
6. A cooking utensil plus residue of fire is:
7. A cheat plus the total is:
8. A fountain drink plus illumination is:
9. A small citrus fruit plus sculptor's material is:
10. The 15th letter of the alphabet plus a buddy is:
11. Front of the head plus a small, sharp sound is:
12. Race length plus myself plus milk depot is:



Answers: 1, Rose quartz. 2, Moss agate. 3, Feldspar. 4, Sun stone. 5, Tiger's eye. 6, Potash. 7, Gypsum. 8, Soda-lite. 9, Limestone. 10, Opal. 11, Faceting. 12, Lapidary.

IGNEOUS ROCKS CONTRIBUTED TO
SALTY SEAS

To get salty the sea had to become somewhat rocky.

The salts in the ocean, according to the Encyclopedia Britannica, result from more than two billion years of disintegration of the igneous rocks of the earth's crust.

Through the centuries this has produced nearly three and a half pounds of salt for every 100 pounds of seawater. So thoroughly has this disintegration occurred that all the principal salts are found in the same proportions everywhere in the oceans.

--Via Gens

HAWAIIAN BIRDS ARE ROCKHOUNDS

At least three species of birds in Hawaii National Park are known to build nests of spun volcanic glass.

Droplets of lava are squirted in the air, then solidified as filaments known as Pele' Hair. Thousands of these delicate fibers are used by the birds in building a single nest.

--The Lode Down,
Via Emerald Gens



HAPPY
HALLOWEEN

A FIRST AID MEMORY LESSON - LEW AM WAGI

IF YOU WILL LEARN THE FOLLOWING OUTLINE YOU WILL HAVE THE FACTS AT YOUR FINGER TIPS FOR GIVING FIRST AID IMMEDIATELY IF NECESSARY



LIE DOWN-----To prevent shock.

1. BLEEDING - apply direct pressure to control. NEVER apply a tourniquet except for amputation. If you do use one, mark the time on victim's forehead with pen, blood, etc. DO NOT LOOSEN IT, let the Doctor do that.

EXAMINE FOR:-- 2. BREATHING - Start breathing ASAP by mouth-to-mouth method. Use arm-lift back-pressure if head is badly injured.

3. POISONING - Look for signs of burns around mouth, odors, fumes. If container is near by take it along for identification and antidote. Follow directions on container to neutralize.

WARM-----If coat or blanket is available place under the victim if possible. It is only necessary to maintain body temperature. Covering is only to shield victim from public gaze.

AWAY-----Keep people from crowding too close. Give them something to do - call the ambulance, direct traffic, people, etc.

MOVE-----DON'T - keep victim quiet as possible to prevent shock until help comes.

WATER-----VERY little or none. Moisten lips but do not give victim any to drink. Internal injuries may be worsened by this. And NEVER try to give water to anyone who is unconscious.

AMBULANCE-----Call the operator and have her dial,

She can get help more quickly than anyone else. Otherwise an individual can be held responsible for an ambulance charge. Locate the spot by reflector numbers, bridges, telephone pole serial numbers, road signs, etc. DO NOT HANG UP THE PHONE UNTIL AFTER THEY GET ALL YOUR INFORMATION.

CALM-----YOU keep calm and your patient will feel better. So will the people around you.

EYES (I)-----Keep the victim from seeing his injuries if possible. This would only increase his shock.

From the California Federation Safety Manual
Prepared by Bernice I. Achilles
and Ellen Schultze

Everett Lapidary Shop

THE CAPITOL CITY'S FIRST ROCK SHOP

2941 North 65th

PHONE 466-6204



ROCKS OF ALL KINDS

Trails - - - Jewelry - -

Come and see!

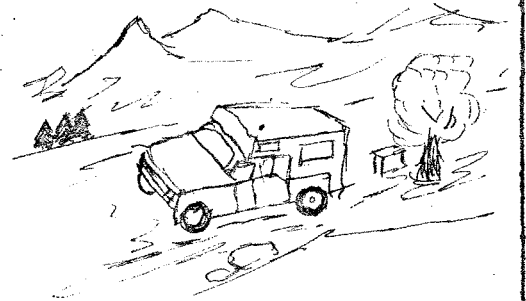


"SATISFIED CUSTOMERS ARE OUR BEST ADVERTISEMENT"

TELEPHONE
466-1697

TOM & LEFTY'S ROCK SHOP

6333 KEARNEY STREET
LINCOLN, NEBR. 68507



Frazilian agate -

Wyoming Turritella, black wood, Algae

Blue Forest wood from Wyoming

Blue agate from Nebraska and black wood

OPALS - OPALS - OPALS - for October



JEWELRY AND CUSTOM CUTTING

Do you have a Rock Hobby ad to run? Since April 1974 the cost for advertising

in The Pick & Shovel is \$10.50 per page (10" ad)

5.25 per half page

3.50 per 1/3 page

2.65 per 1/4 page (minimum)

Circulation is 280 copies including all club member families, several publications and many exchanges with clubs all over USA.

This space would cost you \$3.50 per insertion.

Midwest Federation's NEWSLETTER

Published monthly except July and August as a service to members clubs.
All news, articles, subscription orders and requests for information concerning publication
should be sent to P. O. Box 1130, Des Moines, Iowa 50311



Issue No. 148 - October, 1974

What about 1980?... and 79?

by B. F. Parr

Back in 1968, the National Show at Normal had been over less than two months when the Lincoln Gem and Mineral Club made a firm bid for 1974. Those of you who were at Lincoln in June saw what almost six years of planning and work can produce. What club would like to make a name for itself by hosting the next American Federation Convention and National Show in the Midwest in 1980? We hope some clubs have been thinking about it. Sure, there is a lot of work involved but it is a real challenge and can be a great unifying and strengthening force to a club.

We will also need a host for the 1979 Midwest Federation Convention and Show. Cedar Rapids, Iowa is, at present, the only bidder for 1978 and this will be decided at the 1975 Council Meeting in Detroit during the show there October 9-12. St. Louis is host in 1976 on July 22-25 and we will be in Dayton, Ohio in 1977 with the dates not fixed as yet.

It has been customary to select the MWF Convention and Show site three years in advance. However, a bid for the AFMS Convention and National Show, if suitable, may be approved earlier due to the larger size and extra features. The Convention and Show Advisory Committee will answer questions and furnish information to any club interested in either a Federation show or the big one in 1980. Write to the Chairman - B. F. Parr, 1488 Marion Avenue Road, Mansfield, Ohio 44906.

Announce 1975 bulletin contest

For the 1975 MWF Bulletin Contest, two issues will be used for judging. It will be necessary to send three copies of each of the issues chosen. It has been suggested by many of the MWF editors that two copies be used in judging. This, I believe, will be a more fair way to judge because what is left out in one issue may be printed in the second one. This should give a better "overall picture" of what the editor has printed, by using the two issues.

May I suggest that you save now three copies of each issue printed from March 1974 to Dec. 1974. It seems that so many editors do not save a copy and put it into a folder to keep for the contest. Several editors who entered the 1974 contest had to "dig some up" from members in their club. This seems very strange to me that the editors do not print extra copies of their bulletin. I always print at least 25 extra copies of each issue published. The cost is very small, and it saves a lot of time and trouble. Quite often, someone will write and desire a copy of Vol. ___ No. ___. I am still receiving subscriptions to the BEN., asking for the first issue of Vol.2.

The issues to be judged will be announced later this year. One issue will be picked from the months of March, April or May 1974, and one from September, October, November and December, 1974.

- Paul Good

New fossil list available

A new manual, the "Approved Reference List of Classifications and Common Names for Fossils" is now available. In April 1974, each Club, State Director, Assistant Director and chairmen of all MWF committees were mailed a copy. This new booklet is a must for anyone who collects and exhibits fossils.

*It is available from the Director of Supplies,
Clinton Heckert, 725 Stewart St., Elgin, Ill. 60120.
Price is 50 cents per copy plus 20 cents for postage
and handling.*

11 of 21 MWF trophies awarded in Regional competition

by B. F. Parr

Eleven of the twenty-one available Midwest Federation Trophies were awarded for exhibits in Regional Competition at the National Gem and Mineral Show, Lincoln, Nebraska June 13-16. This is rather disappointing to the Uniform Rules Committee but one reason, perhaps, is that many regular exhibitors have already qualified for direct entry into AFMS competition. There were no entries for six trophies and the one entry for another trophy had to be disqualified because the exhibitor's name was left in the case. There were 151 competitive exhibits and 48 of these were for Direct Entry in AFMS Trophy Competition. These winners were presented with their trophies by Barney Parr, MWF Uniform Rules Chairman, at the banquet, Saturday, June 15. They are to be congratulated as competition was tough.

1. Minerals - Glenn R. Bolick, Hickory, North Carolina - Catawba Valley Gem and Mineral Club
3. Thumbnail Minerals - Kathleen Bolick, Hickory, North Carolina - Catawba Valley Gem and Mineral Club
5. Minerals, Junior Group - Ernest A. Holloway, Jr., Wichita Falls, Texas - North Texas Gem and Mineral Society
6. Lapidary - A. S. Bryant, Hanland, Kansas - Southwest Kansas Gem and Mineral Society
7. Cabochons - Kenneth A. Boulter, Glen Burnis, Maryland - Chesapeake Gem and Mineral Society
8. Specialized Lapidary - Raymond A. Karr, Warren, Ohio - East Ohio Lapidary Club
11. Fossils - Bessie G. Hall, Sarasota, Florida - Tampa Bay Mineral and Science Club, Inc.
13. Jewelry and Metalcraft - Marion J. Packer, Sparks, Nevada - Reno Gem and Mineral Society
14. Educational - Harold J. Harder, Wauwatosa, Wisconsin - Wisconsin Geological Society
15. Educational, Junior Group - Bruce Lauer, Villa Park, Illinois - Earth Science Club of Northern Illinois
18. Archaeology - Dr. A. H. Schoondemark, Fort Collins, Colorado - Cheyenne Mineral and Gem Society

Fall Executive Committee meeting planned for Nov. 2

The Midwest Federation will hold the annual fall meeting of the Executive Committee on Saturday, Nov. 2 at the Howard Johnson Motor Lodge, Hammond, Ind.

Those planning to attend are urged to make reservations early. Special room discounts will be available at the Howard Johnson Motor Lodge.

Welcome New Members

Stone Head Lapidary and Mineral Club, Leslie Baker, Pres., Lakeview Drive, Ontonagon, Mich.

Bloomington Gem and Mineral Society, Ms. Kathryn Lott, Pres., 3141 Kingsley Drive, Bloomington, Ind. 47401

Anoka County Gem and Mineral Club, R. C. Dunn, Pres., 6417 Georgia Ave. No., Minneapolis, Minn 55428

Sales will benefit Scholarship Foundation Fund

Specimen file cards available

Frank Sadelik, a long time member of Central Iowa Mineral Society, Des Moines, Iowa, died some months ago in his early nineties.

For many years Frank had been associated with a local printing and stationary firm and had originated a specimen file card of which he sold hundreds throughout the nation through advertisements in various newspapers and magazines.

The administrator of his estate discovered a quantity of the cards and contacted some Des Moines rock and mineral collectors to determine what disposition should be made of them. It was suggested that they be sold to rock and mineral collectors and that the money from the sales be contributed to the American Scholarship Foundation fund in Frank's name. The administrator approved the suggestion and turned them over to the Midwest Federation for the sale.

The cards will be sold in lots of 100 at a cost of \$1.75 postpaid anywhere in the United States. When placing an order, include check made payable to the Midwest Federation, complete name and address to where the cards are to be mailed. Send your order to Clinton Heckert, Midwest Federation Director of Supplies, 725 Stewart Street, Elgin, Ill. 60102

Specimen Name	Specimen Number
From What Location	General Description
Obtained From	Hardness
For Tech. Information See	Spec. Gravity
Duplicate Specimen No.	Color
Igneous	Luster
Sedimentary	Cleavage
Metamorphic	Fracture
Chemical Contact	Size, approx. ("")
Remarks	Weight approx.
	Fluorescent
	Est. Value
	Cost in Code

Card shown 2/3 actual size. Full size of card is 4x6

Scholarship award

1974 is the tenth year it has been possible for the Scholarship Foundation to grant earth science scholarships. From a modest beginning in 1965 when one \$300 scholarship was offered for two years of graduate study, the Foundation is now in its third year of granting six - one in each of the six Regionals of the American Federation.



The Honorary Plaque winner in the Midwest Federation was Dr. Paul Edwin Potter, Professor of Geology, University of Cincinnati. Dr. Potter is a native of Springfield, Ohio and received his degrees in geology at the University of Chicago. He was professor of geology at Indiana University and has been professor of geology at Cincinnati since 1971. An outstanding authority on sedimentary geology, he has co-authored a number of books, several of which are widely used in college

courses.

Dr. Potter has selected Wayne R. Goodman to receive the grant. Goodman was born Oct. 10, 1951 in Elyria, Ohio. He received his B.S. degree at Ashland College in 1972 with nearly straight A's. Since the fall of 1972 he has been at the University of Cincinnati working on his Ph. D.

JUNIOR MEMBERS

from Diane Dare
chairman, MWF Junior Activities Committee

Where will your future members come from? The active involvement of Junior Members depends on the activities of your club, but if the youngsters are involved NOW, when they "graduate" and become adult members, they will remain active and involved. The Juniors are your club's lifeline!



The Washington Scene

By Kenneth Zahn

Washington is a city of change. Instruction 74-60 concerning fees and permits for use of public lands is being revised again. This instruction is so controversial that it is not anticipated that the final end product will be issued before the first of 1975. The new President has indicated that the Government spending will be reduced which means that recreational facilities will have to pay for themselves and funds will not be available for "non-essential" programs. With the passage of S2844, Interior now has authority to establish reasonable fees for use of public lands. Some of the anticipated changes are: a) groups of 25 cars rather than 25 persons will require a permit, b) the fee under discussion is perhaps \$1.00 a car, c) commercial users will be required to post a fee and obtain a permit, d) the 80 day requirement is being reduced, and e. mining exploration has been put in a separate category. The permit is a simple form which can be filled out in a few minutes. My objection is the necessity of having to travel to a BLM Office which may not be an easy chore. However, like it or not, we will be faced with fees and permits if we collect in groups which can not fit into 25 cars.

Our old friend Wayne Aspinall, former Chairman of the House Interior and Insular Affairs Committee, and who was once listed on the Dirty Dozen, is now a consultant for AMAX, Inc. of N. Y., a company involved in the mining of a number of minerals including coal. He says he is not a lobbyist but he gets \$1,750 a month to tell his employers how to be properly presented and get out a legislative product. I am always amused at the titles used by lobbyists but the end product is always the same. His influence on strip mining will be felt even if he doesn't embarrass his former colleagues. The Coal Industry has a consultant with high Legislative connections.

If you are planning on buying land for that future recreation retreat in Canada, forget it. Over a year ago I had heard that American citizens could not acquire land but now it is a reality. In Nova Scotia a Commission has actually expropriated a large piece of land and the Canadian Justice Department in Ottawa has indicated this may be the policy for all provinces.

The 5th Amendment has been used by gangsters, etc. for a long time but the final phrase "nor shall private property be taken for public use without just compensation" is not so well known. Just 12 words have been broadly interpreted when new parks or wetlands are created. Open space and wilderness often lead to greater ripoffs of the public purse than organized crimes except that these are usually both legal and "respectable". The big problem is determination of what is "just compensation". Perhaps Congress will pass a national Land-Use Policy Act in an effort to forestall the speculators who buy up recreational parcels cheaply and hold them until they can get legislation through their state or Congress to convert them to wilderness or parks, at a tidy profit to the owner and a high cost to the taxpayer.

The railroads own about 6% of the land in the U. S. acquired without cost. Now they are fighting Interior who wants to

reclaim the land exploited by the railroads for minerals, coal, farming or sale.

Amateur mineral collectors have been a help to professional mineralogists and geologists in the past. Perhaps these collectors can do a little more fielding exploration, not just to collect but to discover ways to help reduce our dependence on foreign imports of minerals. There are international rumblings within already formed international producer organizations of acting in concert to achieve a greater economic return for their mineral products. The U. S. relies heavily on imports for bauxite, chromium, aluminum, manganese, nickel, tin and tungsten.

More than 100,000 gold claims dotting Nevada were abandoned to the sagebrush and rattlesnakes years ago by federally fixed price of \$35.00 an ounce. Now that gold is soaring above \$170 an ounce, many of the old claims are getting a long hard look by potential developers. In addition mineral collectors are learning how to pan for gold and recognize possible gold bearing minerals. However, the price is not high enough to induce companies to invest a lot of money, just yet. Inflation and labor costs are a factor. Modern technology is too expensive for amateur prospectors but a surprising number of collectors have laid the groundwork for major companies and some will be able to sell their claim at a price to make it pay.

Karl Landstrom, former Director of Bureau of Land Management, took issue with Jack Anderson of the Washington Post concerning his statement that "environmental concerns never stopped an important energy project." It is a matter of record that the Alaska Pipeline, geothermal leasing, off-shore drilling, to mention a few were stopped for long periods until environmental impact statements were prepared. In addition such impact statements are being prepared for many recreational projects and land suggest for wilderness only. Mr. Landstrom remarked that "Demands to suspend the National Environmental Policy Act would have less merit if the executive branch would confine itself to prompt and efficient implementation and recognize that the Act calls for balanced protection and growth, not protection alone." To this I reply, amen. We do need such a balanced program.

Senator Metzenbaum is conducting hearings concerning the park reservation system which is not working. The National Park Reservation System, Inc. has a contract to provide reservations but apparently there are possible improprieties in the award of the contract and people are not getting a reservation or campers have not received any service for which they paid a fee.

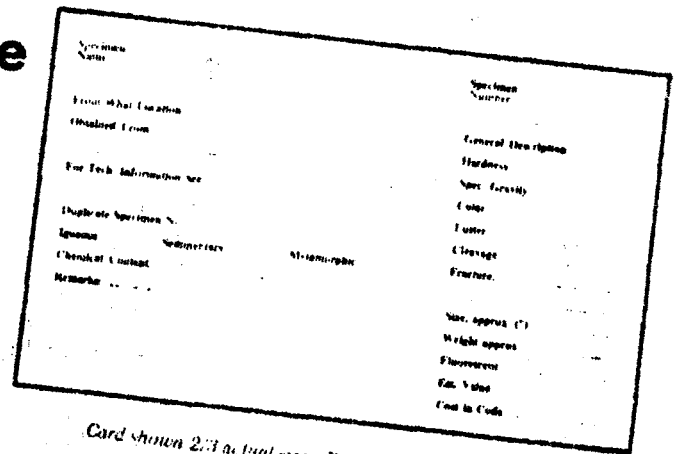
President Ford has hardly wet his feet but he has issued orders being felt in several agencies. In a stern message to conservationists he has stated that some of the environmental concerns will have to take second place to the energy needs. He lashed out at those who espouse a policy of limited economic growth and he intends to have a balanced program between conservation and energy. This policy will have some implications for mineral collectors and recreationists. I do not anticipate tremendous strides in converting land to wilderness. He stated that "we know that in some cases where environmental considerations conflict with other needs and values of society, we have no alternative but to arrive at reasonable compromises".

Specimen file cards available

Frank Sadelik, a long time member of Central Iowa Mineral Society, Des Moines, Iowa, died some months ago in his early nineties.

For many years Frank had been associated with a local printing and stationary firm and had originated a specimen file card of which he sold hundreds throughout the nation through advertisements in various newspapers and magazines.

The administrator of his estate discovered a quantity of the cards and contacted some Des Moines rock and mineral collectors to determine what disposition should be made of them. It was suggested that they be sold to rock and mineral collectors and that the money from the sales be contributed to the American Scholarship Foundation fund in Frank's name. The administrator approved the suggestion and turned them over to the Midwest Federation for the sale.



Card shown 2/3 actual size. Full size of card is 4x6

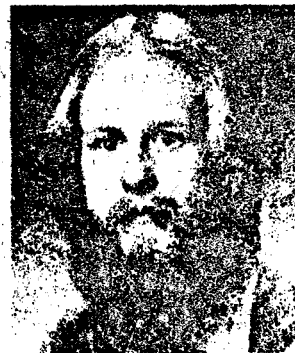
The cards will be sold in lots of 100 at a cost of \$1.75 postpaid anywhere in the United States. When placing an order, include check made payable to the Midwest Federation, complete name and address to where the cards are to be mailed. Send your order to Clinton Heckert, Midwest Federation Director of Supplies, 725 Stewart Street, Elgin, Ill. 60102

from page 1
scholarship

Dr. Hurst selected Ed wells, 26, a native of Atlanta, Georgia. He attended public schools in the Atlanta area, and after graduation from Headland High School, East Point, Georgia, in 1965, attended Georgia Institute of Technology and West Georgia College. While at Georgia Tech, as a Civil Engineering major in the Cooperative Program, he worked alternate quarters in the Engineering Department of Southern Railway Company. He attended West Georgia College from January, 1969 until June, 1970. After a two-year tour of active duty in the U.S. Navy, in Charleston, S.C., he returned to West Georgia College where he received the B. A. degree in Geology in August, 1973. He is currently enrolled as a graduate student in Geology at the University of Georgia pursuing the M.S. degree. His interests include economic geology, mineralogy, and statistical and computer applications in geology. Non-academic interests include scuba diving and camping.

Dr. Potter has selected Wayne R. Goodman to receive the grant. Goodman was born October 10, 1951 in Elyria, Ohio and received his B.S. degree at Ashland College in 1972 with nearly straight A's. Since the fall of 1972, he has been at the University of Cincinnati working on his Ph. D.

William Patrick Statham was chosen by Mr. Crabtree. He graduated from Borah High School, Boise, Idaho in 1968. He received his B.A. degree in Anthropology from Boise State College, Boise, Idaho, in 1972, and his M.A. degree from Idaho State University, Pocatello, Idaho in 1974. He plans to use his scholarship at Idaho State University this fall term and then may transfer to the University of Oregon for work on his Ph.D. Mr. Statham is single.



William Patrick Statham



Ed Wells



Wayne R. Goodman

His primary interest is in lithic replication and analysis. He has actively participated in music ensembles since 1960 including a European Concert Band Tour with Boise State College in 1971. Of great interest is the fact that Mr. Statham was scheduled to give two programs at the Northwest Show in Forest Grove on "Discussion of the Ancient Craft of Flintworking".

LINCOLN GEM AND MINERAL CLUB, INC.
P. O. BOX 5342, LINCOLN, NE. 68505

The purpose of this corporation shall be to study, promote an interest in, and disseminate knowledge of lapidary and various Earth Sciences including but not necessarily limited to geology, paleontology and mineralogy. It shall be a particular purpose of the corporation to provide education in these fields to its members and the general public, particularly youth and student groups.

MEMBER: Midwest Federation of Mineralogical and Geological Societies (MWF)
American Federation of Mineralogical Societies (AFMS)
Nebraska Association of Earth Science Clubs, Inc. (NAOESCI)
Community Arts Council of Lincoln (CAC)

Regular Meetings: 4th Saturday of the month, 7:30 P.M., September thru May
W. O. W. Bldg., 732 S. 27th St., Lincoln, Nebraska

1974 ELECTED OFFICERS:

President -----	Ralph Ulrich	3909 Pace Blvd.	Lincoln, 68502	423-0484
1st Vice Pres. ---	Frank Rule	6333 Kearney	Lincoln, 68507	466-1697
2nd Vice Pres. ---	Larry Bigley	6126 Hartley	Lincoln, 68507	466-0211
Rec. Secretary ---	Nelda Oliver	5700 Otoe St.	Lincoln, 68506	489-5222
Treasurer -----	John Harrison	Hickman, NE.	68372	792-3825

1974 BOARD MEMBERS: (Elected)

Norma Miller -----	931 Cottonwood Dr.	Lincoln 68510	489-8840
Tom Simmons -----	2970 South Street	Lincoln 68502	488-1619
Howard Taylor -----	910 New Hampshire	Lincoln 68508	432-3707
Marie Wells -----	2940 Vine Street	Lincoln 68503	435-6758

STANDING COMMITTEE CHAIRMEN:

Liaison -----	Norma Miller
Hospitality -----	Virginia Green
Refreshments -----	Stan & Hazel Greenwade - Don & Edna Carter
Membership -----	Marita Bigley
Vaja Con Dios -----	Marie J. Carveth
Historian -----	Frances Tracy
Librarian -----	Joella Olson
Housing & Property -----	Frank Rule
Field Trips -----	Larry Bigley, Tom Simmons, Don Carter
Education -----	Roger Pabian
Program -----	Florence Boring
Calling Committee -----	Wilfrid & Ollie Wittmann
Community Arts Council -----	Rev. & Mrs. Raymond Pfeiffer
NAOESCI Reporter -----	Luella Paul
Scholarship -----	Julius & Myrtle Young
1974 Swap -----	Don Duckett
1974 Show Director -----	Irl Everett

STEERING COMMITTEE 1974 SHOW - Ralph Ulrich, Howard Taylor, Bruce Simon, Irl Everett

PUBLICATIONS CHAIRMAN ----- Art Howlett

PICK & SHOVEL STAFF ----Editor - Evelyn Ulrich Phone 488-9051
3521 So. 48th St., Lincoln, NE 68506
Typist - Rosa Lee Wright
Publisher - Phyllis Parks

Contributions from members are welcome and needed. Deadline for material is the 5th of the month. Please send to the editor.

Articles published in THE PICK & SHOVEL may be reprinted if credit is given the author and the bulletin, and a copy of the publication is sent to the editor.

Lincoln Gem & Mineral Club
Box 5342
Lincoln, NE 68505



NON-PROFIT ORG.
U.S. POSTAGE
PAID
LINCOLN, NE
PERMIT NO. 176

Lincoln Gem & Mineral Club
3602 South Street
Lincoln, NE 68506

MEMBER: Community Arts Council

Exchange Editor: Evelyn Ulrich
3521 S. 48th St.
Lincoln, NE 68506

A MAMMOTH EVENT

NATIONAL GEM & MINERAL SHOW

LINCOLN GEM & MINERAL CLUB - 16th ANNUAL SHOW - June 13-16, 1974

Host to: The American Federation of Mineralogical Societies Show & Convention
The Midwest Federation of Mineralogical & Geological Societies Show
and Convention
The Nebraska Association of Earth Science Clubs Annual Show and Convention

THE PLACE TO GO IN 1974 - NEBRASKA STATE FAIR GROUNDS - June 13-16, 1974
LINCOLN, NEBRASKA

