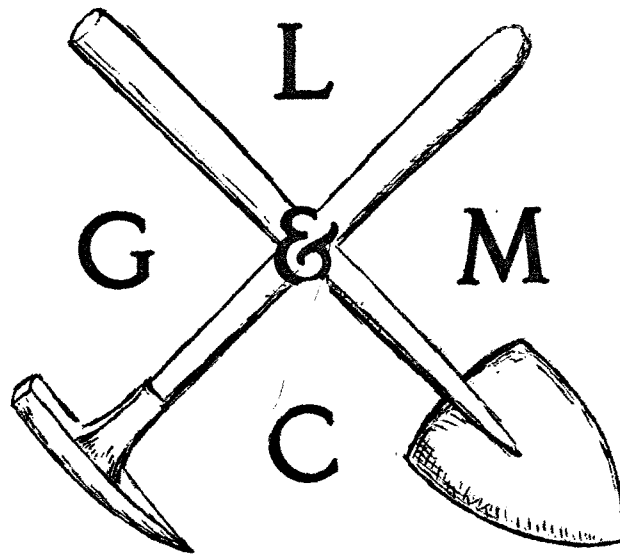


THE PICK & SHOVEL



FEB - - 1973

OFFICIAL PUBLICATION OF
LINCOLN GEM & MINERAL CLUB

HOST OF COMBINED

MWF-AFMS NATIONAL SHOW AND CONVENTION
AND NEBRASKA STATE SHOW

JUNE 13-16, 1974
LINCOLN, NEBRASKA

CALENDAR

REGULAR MEETING..Sat., Feb. 24th, 1973, 7:30 PM WOW Bldg., 734 S. 27th St.

PROGRAM... Dr. R. D. Gibson, former dean of the College of Pharmacy, will have as his topic "Mineral Uses In Medicine and Cosmetics." Dr. Gibson will be remembered as a past president of the LGMC in 1961. There will also be a safety feature with Larry Bigley in charge.

ROCK FEATURE...Any lapidary item, your favorite amber, or a good example of field trip safety equipment, which will be discussed.

REFRESHMENTS...Coffee and cake will be served by the Refreshment Committee.

MUSEUM VOLUNTEERS...Nebraska Hall, 4th floor, every Friday night- 7:30 Sharp. Enter at west door. Take elevator to 4th floor.

WELCOME NEW MEMBERS...Mrs. Wilfrid Wittmann, 3415 E. Pershing Rd. 68502 Ph. 423-4100

REMEMBER...Betty Crocker Coupons and specimens for the Braille Trail for the blind.

The spring meeting of the executive committee of MWF will be held in conjunction with the Chicago Rocks and Mineral Society Show Apr. 7-8, 1973. Further details will be sent as soon as final arrangements have been made.

Committee Chairmen are requested to send their reports to Jean Reynolds as soon as possible to be included in the printed report. This will help expedite the meeting and will hopefully result in more time to enjoy the show.

The '73 bulletin editors' contest will be held in conjunction with the Mid West Federation Convention at Cincinnati, Ohio. The breakfast is set for Friday, July 27. The Dec. '72 issue is the one to be judged.

DATES TO REMEMBER

- Mar. 1st 7:30 PM Steering Committee Meeting, Nebr. Hall, Rm. 122.
- Mar. 8th 7:30 PM Board Meeting, Nebr. Hall, Rm. 122.
- May 5-6 '73 Rock-Mineral-Fossil Swap, North shore of Storm Lake, Scenic Route-71 & 7 East, Chautauqua Park Shelter House.
- May 12-13 '73 Lincoln Gem and Mineral Club Show, Exposition Bldg., State Fair Grounds, Lincoln, Nebraska.
- June 9,10 '73 State Swap, Hebron, Nebraska.

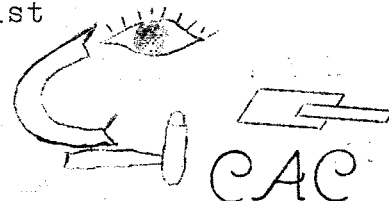
Don't forget to pay your membership dues. They were payable January 1st, and will be delinquent on March 1st. Please pay by February 28.

Contributions from members to the Pick & Shovel are welcome. The deadline for such material is the 5th of the month. Please send to -- Evelyn Ulrich 3521 South 48th St. 68506.

Last month...The January meeting was cancelled because of bad weather and hazardous driving conditions. We are very sorry that we missed the slide lecture by Prof. Peter Huntoon on the "Grand Canyon Geology". We hope that we will have the privilege of hearing him speak at a later date.

At the January meeting it was stated a mailing list of 10,000 labels is available to the Art Council members.

If we're interested in sending advertising and want to use their unduplicated lists we may contact Wayne Walkenhorst 5625 O, Ph. 489-8845 and he will be of assistance.



The Community Arts Calendar of events is kept by Shirley Hagemeyer, % City Library. Hopefully events will be scheduled to keep from conflicting too badly.

The next Community Arts Council meeting will be held Monday Feb. 26th on the 5th floor of the Lincoln Center Bldg.

Rockhound's Directory Available

A letter from P. R. Page of Gainesville Florida states that the 1973 "Rockhounds' Directory" is now available. It contains the name and address of over 270 individuals. In most instances their listing includes their gem and mineral interests and whether they wish to buy, sell, or trade material.

The price of the booklet is \$1.00 plus \$.25 per order to cover postage and handling cost.

Since a limited number of Directories have been prepared, and a second printing is not anticipated, it is suggested that you order as early as possible, if interested. The address is: P. R. Page, P.O. Box 1233, Gainesville, Florida 32601.

The following pamphlet can be obtained by writing the U.S. Printing Office, Washington, D.C.

"Gem Stones of the United States"

Catalog No. 119.3:1042G. Pamphlet has 49 pages with illustrations and descriptions of precious and semi-precious gemstones in their locations. The price is 25¢.

The following dealers will be at the 1973 Show:

- Harry Keller, Bend Ore.
- Johnson Agate, Mankato Minn.
- Melvin Lentz, Mulvane, Kansas.
- Claude Dawson, Memphis, Tenn.
- Shermans, Onaws, Iowa
- Guy Miller, Hastings, Nebr.
- Irl Everett, Lincoln, Nebr.
- The Nash Ramblers, Visalia, Calif.

FROM THE PRESIDENT'S DESK ---

I guess we don't have any friends in the weather bureau as they let our January meeting get snowed out. In my ten or so odd years with LG&MC, I don't ever recall a meeting ever being called because of weather. I hope we can avoid such further inconveniences in the future. Our work load at the next meeting will be about doubled since we didn't get any business done in the cancelled January meeting. From a personal view point, it is a terrific let down to get all psyched up for conducting my first meeting as president and having to cancel it because of weather.

Fortune still smiles upon us, however. Professor Huntoon has agreed to reschedule his slides and flicks on the Grand Canyon Geology. If our luck is really good, it is possible that he may present several programs at the show. Several of us who have already seen his presentation agree that his slides are really fantastic. Let's hope he can give his program at the show.

Several members have asked about rescheduling the January meeting. This will be impossible as we have the building rented only for the fourth Saturday of each month. However, we did rent the building on a twelve month basis this year, so, perhaps, this summer we can hold an open house or something of that order to make up for our lost January meeting.

Several nights back, the publications committee had a short meeting to get things a little better organized. As most members are aware, this part of the club function has been expanded to include more workers; thus, more coordination of efforts is required. One of the questions which frequently arises is what happens with exchange bulletins. They are first received by the president, and read. Items of interest are marked and the bulletin is then passed on to the editor. The editor may or may not select to publish the articles indicated by the president. She may select some other items or none at all. Only where news is of paramount importance, for example, some impending legislation that may affect the hobby, or a report on the health or fortunes of someone well liked by the members, will the president give a directive to print. The bulletins then find their way to the general meeting where they are made available to the membership at large. The members may then take the bulletins left at the meeting. At this time, the various committee chairman should avail themselves to the bulletins and check their contents for information pertaining to their committee. For example, field trips committee chairman should look for data on field trips or information that pertains to collection locations. This is also a good time for the commemorative stamp chairman to raid the covers of the bulletins, as many clubs do not use a franked cover. When it is determined that the bulletins will no longer be needed, they are returned to the editor, who cuts them up and files away information pertaining to various facets such as field trips, lapidary, etc.

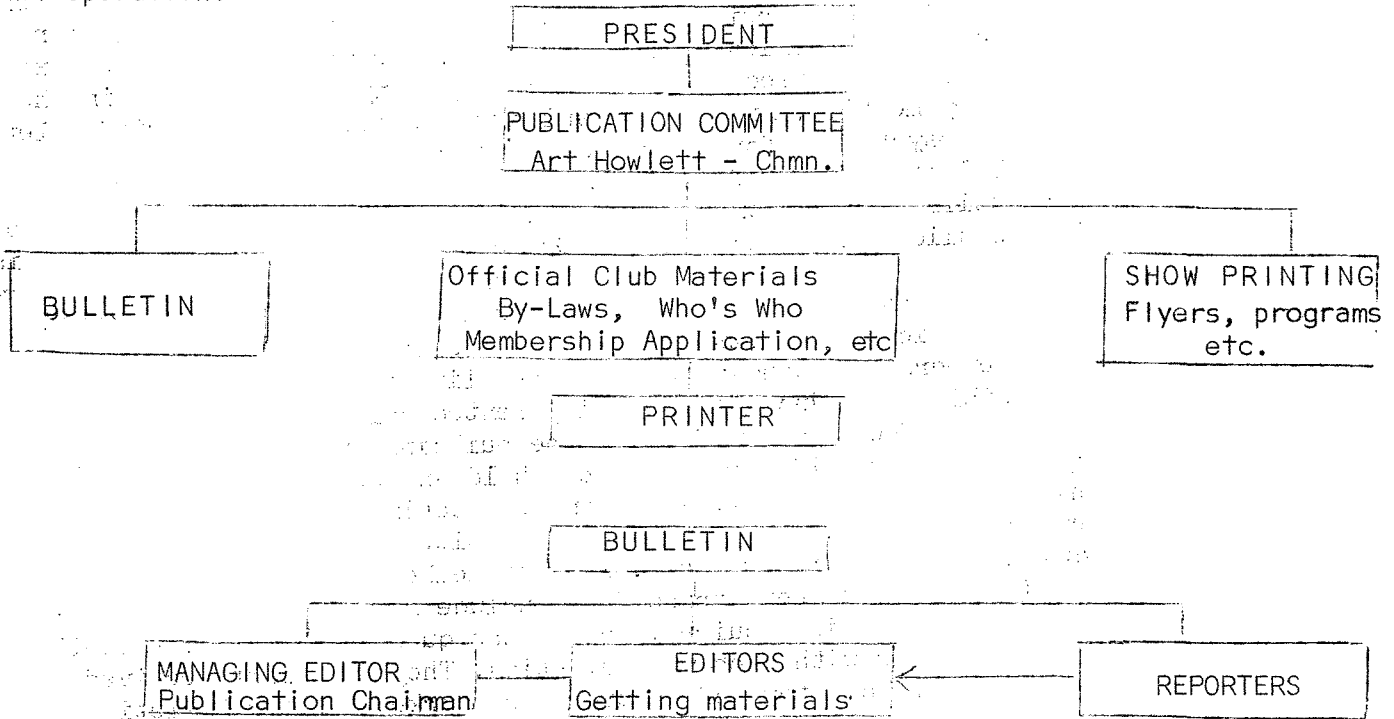
The area for the President's Field Trip has not yet been determined. Several exciting locations are in mind but all of the details have not been cleared with the several persons who have made suggestions. One suggestion has been to alter the dates of the trip. Because of many schools starting late in August, the traditional Labor Day Weekend is no longer suitable as the family aspect of the trip is ruined. Also, this date conflicts with the dates of the Omaha show. This matter will be aired at some future meeting. Your suggestions will be appreciated and considered.

Hope to see you all at our February Meeting, the 24th, Saturday.

Roger K. Pabian,
President, LG&MC

PUBLICATIONS COMMITTEE

On Tuesday, Febr. 6th, Art Howlett, managing editor of the Pick & Shovel, called a meeting for the purpose of acquainting the editorial staff with their various duties. Club president, Roger Pabian, presented the following chart as an organizational plan of operation:



These diagrams are a guide line. The Publication Committee has been established with Art Howlett as chairman. He will coordinate all the publications put out by LGMC, order supplies, run errands, mail the bulletin after it is printed and assembled, etc.

The Bulletin Staff will be concerned with the Pick & Shovel only. When you have material you wish printed in the P & S send it directly to Evelyn Ulrich who is in charge of the content of the Pick & Shovel. Kathy Grabher will do some of the typewriting. At this point we need more help with cutting stencils. If you can help in this area please give Art a call. With a bulletin of this size we really should have more than one typist anyway.

If you desire some printing done other than Pick & Shovel, call Art, 434-2338. He will dole out the work. Let's get accustomed to this new system. Everyone is learning a new 'job' so we will all have to be a little patient...it will work after we get some of the kinks ironed out.

-your Editors

APPROPRIATE THOUGHT FROM THIS CHINESE PROVERB:

If there is righteousness in the heart, there will be beauty in the character.
 If there is beauty in the character there will be harmony in the home.
 If there is harmony in the home there will be order in the nation.
 When there is order in the nation there will be peace in the world.

(Apply these thoughts to LGMC and it's members and let's work at it. OK? OK)nm

LGMC FIELD TRIPS FOR 1973 (Subject to Change)

April 15... Odell and Wymore, Nebraska area. Meet at Highway 8 intersection in Odell at 8:30 AM. Normal route to collecting area is closed at present time. Leave Odell at 11:30 AM for Wymore and lunch. We will go as a group from Odell to Wymore. The reason for the first trip to Odell is simply that the area is being flooded by a new dam. How high the water level will eventually be has not been determined. We may lose this collecting area. Round trip will be about 140 miles.

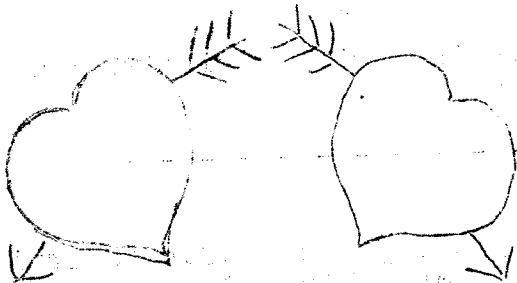
The rest of the trips are not as yet formalized but the following list should give the members an idea of the places we hope to be able to visit this coming season:

- April 29.... Nebraska City Area for fossils
- May 5 . . . Beatrice and Wilber Area gravel pits for agate and cutting material
- May 26-29 . . A goody I hope, to the Jet, Oklahoma area for Selenite Crystals and then on to the Tri-State area for other minerals. Start working on your camping gear and plan on coming along
- June 16-17.. Another good looking one. Northeast Nebraska area. Petrified wood.
- June 23 . . . Louisville, Nebraska area for fossils
- July 7 . . . Fullerton, Nebraska area for wood, common opal, and jasper
- July 21-22.. Got to plan this one over because of a solid NO answer from the people who own the land
- August 4-5.. This is the Club Swap and field trips are being planned for the out of towners but all and any club members are welcome to come along and help by being trip hosts.

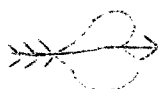
THIS IS A START AND OTHERS WILL BE PUBLISHED IN FUTURE PICK AND SHOVEL EDITIONS. SOME ARE NICE AND CLOSE TO HOME BUT ALL WILL GET TO PRACTICE THEIR CAMPING SKILLS BY STAYING OVERNIGHT. I HOPE THE VARIETY WILL GET A LOT LARGER TURNOUT.

Larry Bigley, Field Trip Chairman

FLASH... The Nebraska Emergency Search and Rescue Inc. squad is available to provide first-aid service, rescue work, indoor security, etc. Ye Old Editor has just come up with some facts regarding this service. See next issue of P & S for complete info. (I hope.) nm



GET YOUR VALENTINE A
TREASURE HUNTERS FIND
MINERAL AND METAL DETECTOR



TREASURE HUNTERS FIND

You can't buy a better instrument than a WHITE'S!

THE SENSATIONAL AND BEAUTIFUL GOLDMASTER 66T
is the finest all-around Mineral and Metal Detectors
made, and is second to no other—regardless of
claims. TWO-YEAR GUARANTEE.

**DETECTS GOLD,
SILVER AND COPPER
NUGGETS, COINS, RINGS,
JEWELRY, GUNS, AND ALL SORTS
OF TREASURE. ALSO MAGNETIC
ORE BODIES AND VEINS, ETC. SUPER-
SENSITIVE TRANSMITTER-RECEIVER, THE 66-T
COMES WITH TWO LOOPS. SEE IT TODAY AT:**

— IMMEDIATE DELIVERY —

*See This and Other Models
manufactured by*

WHITE'S ELECTRONICS
INCORPORATED

*Other Models
as low as* **99.50**

**AT YOUR LOCAL
DEALER**



Box 46
Sprague, Nebr. 68438
Ph. 794-5730



Lee Pavel
L.P. Enterprises

HARD HATS, SAFETY AND THE ROCKHOUND

Something I dislike doing is to sit down and write, but I feel that due to the fact that my family has had it's share of accidents this year I should at least try.

When hard hats are mentioned many people have an excuse for not wanting to wear one. They say it is too hot, it is too heavy, or don't even believe that an accident could happen to them. I know that they are wrong! Accidents do happen and sometimes are preventable. Example; it cost about \$45.00 to have my wife's head sewn up. The cost of a hard hat varies from about \$2.50 to \$5.00. I believe the cost of the hat to be well worth it. I did leave out part of the cost but will leave it up to you how much it was worth,---the pain and discomfort, hours lost from enjoying yourself; and the accident could have been a lot more serious.

It would be possible for me to go on for hours and pages, but I don't have the time and you don't want to read it. I am going to tell you that one of the planned field trips has had to be cancelled because the new government safety and health act has the owner of this quarry feeling that he cannot take the chance of an accident. If these people can see that we are safety minded and have the safety equipment required, it will be easier for all concerned to continue to hunt these areas. An accident on their property, whether it is their fault or not will cause a government investigation. If they are found to be negligent they are subject to a fine and possible imprisonment depending on the nature of the accident. A release form does not release the property owner from the federal government only from insurance liability.

Safety goggles should also be mentioned because what we want to bring is not always laying on the ground. The chipping of stone with hammer and chisel is dangerous. Chips of stone or splinters of steel in the eye is not my idea of fun. Enough said on paper but come hear me at the next meeting, I can really ramble on.

To sum everything up, I have checked on hard hat prices and for those that don't have them we are working on a reduced price by buying in lots. The safety goggles don't cost the price of eyesight. Please take the time to sharpen your chisels and trim the burrs from the impact end. Remember, proper clothing is essential. As your field trip chairman I hope this can be a fun year and I can use all the help that any of you want to give.

Thank you,

Larry Bigley

P.S. Half of the real fun of a rockhounding trip is sitting around talking about it the next day without bandages.

Have you paid your membership dues? If not, please refer to Article I, items d and e of the By Laws concerning membership and dues.



GLENNAS GLEANINGS

"The Die is Cast". The Steering Committee signed the contract for the 1974 show buildings on Febr. 2nd. "Let's go!".

Dorothy Englehart spoke to the pupils of Unit B, 4th, 5th, and 6th grade, Bethany Elementary in January. The pupils, via Pat Lawson wish to express their thanks for her interesting speech. Good work, Dot!

Lynn & Marie Wells' son, Clark, left for a six months tour in the Army National Guard at Ft. Ord Calif. on Jan. 18th. His address, for those who wish to write; Pvt. Clark Wells
E. 1.505602423
C.O.C. 1st Bn, 5th Platoon
1st B. C. T., B.I.D. E.
Ft. Ord, Calif. 93941

Darlene Janzen is serving as Show Chairman for the central Nebraska Rock & Mineral Club's 1973 Show, April 6th-8th.

Glen Ulrich, with Pete Klein who members may remember as a judge of competitive exhibits at a previous LGMC show, will participate in a film made by Great Plains ETV, demonstrating the many types of work people may do to make a living. Their segment will demonstrate the lapidary arts. This shows that club members are carrying out our theme of education.

I heard a rumor that Tom & Mrs. Simmons have a new trailer but they are tripping so can't confirm.

The 1973 Field Trip Chairman, Larry Bigley, plans to set up some special trips for the purpose of collecting horn coral, Odell diamonds & chalcidony roses to be used by the Registrations Committee of the 1974 show. to make centerpieces & favors for banquets, luncheons, etc. Anyone who has an excess of these materials, is asked to get in touch with that committee.

THE PETRIFIED PEBBLE PUPS 4-H CLUB held their reorganization meeting at the home of their leader, Mrs. Marie Wells. They will take the 2nd year rock project jointly along with other individual projects. The following officers were elected: Brent Jones, President, Andrew Olson, Vice President, Lars Olson, Sec.-Treas., Lee Pivonka, News Reporter, Jerry Lyne, Social Leader. Other members present were: Dianne Colburn, Robin Edmunds, Sandra Wright, and David Piper. The next meeting will be at Brent Jones' home on February 9th.

Lee Pivonka, News Reporter

FIELD TRIP

April 15, 1973-Odell & Wymore NE. Meet at Hwy. 8 intersection in Odell at 8:30 AM. Normal route to collecting area is closed at present time. Leave Odell at 11:30 AM for Wymore and lunch.

SAFETY COLUMN

Did you know that table salt can be a fatal poison? In China it has been used as a method of suicide.

Many first-aid books recommend giving salt solution as an emetic. As a rule the recommendations for the use of salt to induce vomiting are not very clear as to how much salt should be given. They rarely warn that salt in large doses can be as poisonous as the poison you are trying to eliminate.

An article in Life and Health magazine tells of a mother who thought her two-year old son had swallowed four pain killer capsules. She gave him four eight ounce glasses of salt water containing four tablespoons of salt in each glass to induce vomiting. Two hours later he was taken to hospital in a coma. His brain never recovered normal functioning. Nine days later he died. Tests revealed that no painkiller at all had been in his system but that an overdose of salt had caused his death.

WINTER DRIVING SAFETY...Nebraska Civil Defense suggests besides the usual winterizing a winter storm car kit should be assembled and kept in the car and should contain:

- Blankets, sleeping bags or a box of newspapers.
- Two one-gallon cans with plastic covers or an empty coffee can for sanitary facilities.
- Matches and candles.
- Extra clothing, caps, mittens, etc.
- Transistor or car radio for storm bulletins.
- Compass and maps
- Pocketknife, first aid kit and shovel
- Facial tissue
- A small sack of sand for traction in snow and ice
- Flashlight or signal light to be used to find help
- Plastic scraper for the windshield
- Booster battery cable
- A fire extinguisher
- Catalytic heater
- Compact alcohol stove

If you are caught or trapped in a blizzard or winter storm Civil Defense recommends you follow these rules:

1-Stay in your car. You are more likely to be found there than if you go wandering around and become disoriented.

2. Keep a window open for fresh air. Freezing wet snow can completely seal out oxygen.

3. Beware of carbon monoxide. Run the motor and heater sparingly and only with a window open for ventilation.

4. Clap your hands and move your limbs vigorously from time to time. Change positions regularly.

5. Turn on the dome light during night to make sure the car is visible to work crews.

6. If there are several persons in the car, don't all sleep at the same time.

7. Don't panic.

Hopefully by preparing homes and cars for the inescapable winter storms and by following the safety rules if caught or trapped in a storm, more Nebraskans will survive the state's most dangerous natural disaster in the winters.

SOME SAFETY RULES FROM NORTHWEST FEDERATION SAFETY PROGRAM:

1. Protect your eyes when chipping or grinding rocks.
2. Run your grinding wheels no faster than the speed recommended by the manufacturer.
3. Avoid letting your wheels become water-logged by allowing the wheel to spin a while with the water turned off. Otherwise, the water will settle at the bottom and run out of balance causing the wheels to become bumpy.
4. Cover all belt pulleys with some kind of guard or shield.
5. When dry sanding, use a dust mask or suction blower. Breathing of such dust particles can cause silicosis.
6. Always keep all harmful liquids and powders properly labeled and away from the reach of children.
7. Remember, horse sense is only stable thinking. (Last hint courtesy of nm).

AMETHYST

A violet or purple variety of quartz, sometimes referred to as the "queen of the quartz gems." The name is derived from the Greek for "not intoxicating." There was an old belief that the stone protected its owner from strong drink, and that wine drunk from a cup of amethyst would not intoxicate.

As early as 3500 B.C. Egyptians mined amethyst near Gebel Abu Diyeiba. It was employed largely for intaglios in antiquity.

Amethyst has for a long time been associated with religion. Clerics rings were often set with amethyst. The term "bishops grade" has been given to amethyst of a deep vibrant color, and stones of this grade command the top price.

The color of amethyst is often attributed to manganese. On exposure to heat it usually turns yellow, and much of the yellow quartz used in jewelry is heat-treated amethyst.

It is widely distributed mineral, but fine, clear specimens fit for ornamental stones are confined to comparatively few localities. Crystals occur in cavities in mineral veins, and granitic rocks, and in linings of hollow agate nodules or geodes. Many such geodes are found in Brazil and Uruguay. Much fine amethyst comes from the Sverdlovsk area in the U.S.S.R.

FEBRUARY - BIRTHSTONE: Amethyst
ZODIAC SIGN: Pisces - FLOWER: Primrose

The February born may find
Sincerity and peace of mind,
Freedom from passion and from care,
If she an amethyst will wear.
Let her an amethyst but cherish well,
And strife and care can never with her dwell.

February, the second month of the year, was not in the Romulian calendar. In the reign of Numa (the second legendary king of Rome, 715-672 B.C.) two months were added to the year - January at the beginning, and February at the end. In 452 B.C. the decemvirs - a Roman official commission of ten men - placed February after January.

The Anglo Saxons called this month "Sprout - Kale" because cabbage was sprouted at this season.

1. From the book The Curious Lore of Precious Stones by George Frederick Kunz. Copyright 1913 by J. B. Lippincott Co. Renewal 1941 by Mrs. Ruby Kunz Zinsser. Used by permission of J. B. Lippincott Co.

-Evelyn Ulrich

NO DUES - NO NEWS

WOODWARD RANCH AGATE

With only a few hours notice, we picked up, packed, and took off for what we thought would be a trip out of Nebraska's ice and snow. We were going to the Deep South hunting for the sun and ROCKS. Unfortunately Texas was having its worst winter in twenty years. Still, we were able to hunt in some areas.

Probably the most lucrative was the Woodward Ranch near Alpine, Texas where the massive red and black plume is found. Most of the ranch's surface is covered with red rocks, but the trick is to find the ones with plume. The best comes in what is known locally as "red biscuits", so we were told by the ranch owner who has been a cattleman all his life, but a rockhound for the last thirty years. Frank Woodward showed us what to look for and sent us over the hills with our rocksacks and lots of enthusiasm.

For myself, all the red rocks looked alike and it was about an hour before I found what proved to be a biscuit. After that the others came easy, and when Mac and I got back to the ranchyard three hours later, at dusk, and Mr. Woodward hi-graded our find, we had thirty-five pounds of "good stuff". He charged 25¢ a pound for the good material and offered the rest to us free. We felt pretty good when he told us that many people haul back fifty pounds of rocks and sometimes only have three or four pieces with plume.

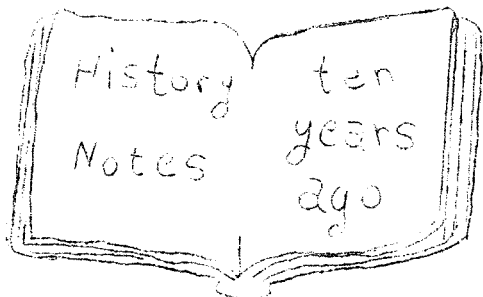
We also picked up some volcanic material with both holes and tiny agates in it. Mr. Woodward told us the biscuits were originally formed in this material in the beginning. The lava spewed up and left tiny cavities where the bubbles had been. Later, silica filled the cavities, forming agates, some banded like fortifications. In one area on the ranch, no longer open to the public, the small cavities were filled with opal.

In this same area about a hundred miles south in Big Bend Country, we found the famous Pompom and Thistle agate which is yellow sagenite with green moss in clear agate. It is very scarce and only found in this one small area. The yellow Pompoms are pseudomorphs after aragonite and it makes fabulous cabachons.

The Woodwards have a shop in the ranchhouse, also a camping area is near. If you don't care to hunt, you may buy at prices commensurate with the quality of the material. Frank calls it "hunting with a silver pick".

Any rockhound who passes through this area would be well advised to visit Woodward Ranch to see their collection and visit the owners. They dispense real Southern hospitality.

-Glenna McGinnis



The Lincoln Gem and Mineral Club held their February meeting at Roberts Dairy Party Room. Thirty-eight members answered roll call and seven guests were welcomed, by our president, Marie Carveth.

George Schilman, Biologist with the Nebraska Game Commission, gave a very interesting and informative talk and showed slides on snakes of our area with examples on display.

from the notebook of historian - Frances Tracy

Everett Lapidary Shop

capitol city's first rock shop!!

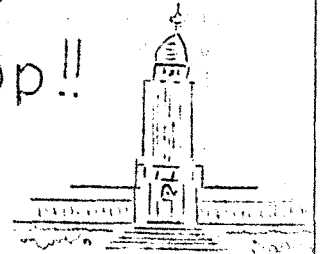


BANKAMERICARD

2941 NORTH 65th STREET - PHONE 466-6204

BE MY VALENTINE, WE HAVE SOME

REALLY NICE ITEMS IN STOCK



"SATISFIED CUSTOMERS ARE OUR BEST ADVERTISEMENT"

"Mineral Digest" Vol. 2

The Journal of Minerology

This magazine is wealthy with articles and illustrations. On page 34 we have an article by Richard M. Pearl; "Minerals of India".

"So Rich in gems and minerals is India, as is the region surrounding her-which now includes countries that bear other names, some new some old- that once it was thought that it must be the tropical heat that encouraged the growth of the best and most colorful of the minerals. Pliny, the Roman naturalist, wrote, 'Of Lands, India produces more gemstones that any other.'"


"We know now that a tropical climate has little to do with creating the wondrous mineral products. However, it does make for a deep soil in which they are protected from erosion and preserved for the finding. Organic gems, which are not truly minerals, are of course dependent on the various factors, including climate, that governs the growth of living things. Furthermore, olivine weathers readily in the presence of moisture; Turquoise occurs chiefly in arid lands; and certain other minerals- but not many are influenced by atmospheric conditions to some degree."

These are the beginning paragraphs of a most interesting article by Mr. Pearl. The lovely color illustrations add much to his discourse.

On pages 42 through 51 are some unusual Cameos pictures with explanatory captions.

Look at the picture on page 55; with the title-"The False Gems" by Guy De Naupassant. A novel no less, be sure you see all the illustrations! I feel there are many meanings in this story. The illustrations are by Irv Docktor. Only one guess as to his national origin.

Enjoy enjoy!

from the little old bookworm 

THE EVERETTS' ROCK TRIP

I feel I should write a little note about our rock trip this fall. As we planned, we left Lincoln for Tulsa, Oklahoma October 26th. Arrived in Tulsa same night so Friday, the 27th, we planned a time to sightsee. As you know Claremore, Oklahoma is the birth place of Will Rogers. So we went to Claremore and saw all the sights to see. There are many items and mementos from Will Rogers era.

Also while in Claremore, we went to a Wax Museum and spent an hour or two looking at it, then back to Tulsa to set up for the Rock Show.

Tulsa always has a very lovely show and draws a very big crowd. Their Show is held every other year so they can plan for a little extra for displays. I walked around and looked at cases and I would say in competition they had 75 - 85, and in non-competition probably 100-150 cases and displays. It is about the size of our show except there are more people and more dealers. Also met many of our old friends from that area.

We packed up and left there Sunday night, October 29th, for the Panhandle. As we advertised we were going to Old Mexico for a buying trip. Well, we never made it! I heard that there was nothing new in El Paso, Texas, so we wrote to a dealer we knew would be at Tulsa, and he brought us up the items we wanted. So our trip took us from Tulsa out to the panhandle of Oklahoma to visit with the Paintons.

To go and stay a couple days with the Paintons is something everyone should do. Life out there at their place just slows down to a snail's pace, and they are such pleasant people!

Tuesday, October 30, we went with Ivan and Mildred up to Kiowa, Kansas to help Ivan with an Art Show he held up there. It was a private deal that was held in the local bank, and Ivan took up 12 paintings to show.

We left the place November 2, for another rock dealer's place. We bought a lot of stuff there and the same day we left to go to Wichita, Kansas to see the Ebersoles. Leo and Ada Ebersole were out on the road but we dealt with Del and his wife. (Leo's son and daughter-in-law.) We had to buy some supplies and findings there, so spent more time than we should have, but anyway what's the hurry? We left there and drove to the east edge of Wichita and spent the night.

Friday, Nov. 3rd, we headed to Kansas City to see another rock dealer, and also see our son and daughter-in-law and of course our grandson, Jason Mathew. As some of you know, Gary, our son, is going to Seminary in Kansas City. We went up to his school there and there is a real nice campus. We left them Saturday and headed home. It was good to get home and all that, but, Boy, did we have a job ahead of us! All the new items we bought were to be priced, boxed, and displayed.

Anyway, we had a nice trip and saw lots of country and enjoyed ourselves even if we did not get to Old Mexico. The new items we bought on this trip for sale are on display in our shop.

I should mention here that some folks who are members of the club and all that have never been to our shop - we want to invite all of you to drop out and chit-chat with us.

- Irl Everett

HAVE YOU THOUGHT ABOUT YOUR COLLECTION LATELY?

I bought a dead man's rock collection the other day and as I was sorting the rocks the thought came to me "who is going to pick over my rock collection?"

Every Rockhound has a rock collection, some quite valuable. All of us have at least one rock or mineral or gem stone that we would like for someone to have someday. But how are you going to be sure that someone gets it after you are gone?

Of course, you could give it to them before you die but that would deprive you of the pleasure of possession and display and as you don't know just when you will die, you might be without your collection for quite sometime.

Perhaps a few pieces should be given away, but it would seem reasonable that the bulk of your collection should remain in your possession as long as it gives you pleasure. You should leave written instructions regarding the disposition of your collection, even incorporating this as a part of your will.

Perhaps the bulk of your collection should be sold. In which case arrangements should be made with a trusted rock dealer to supervise the sale or even to buy the entire lot.

In case you have some valuable pieces, it might be advisable to consult your attorney and accountant.

Is your will up to date? Who is going to pick over your rock collection?

submitted by Arthur C. Howlett
Publications Chairman

.....

ACT! More things are lost through indecision than through wrong decision.

.....

An ECOLOGIST is just a new fangled name for the good old-fashioned "Pack-rat". So sez Don L.

.....

The great thing in this world is not so much where we are, but in what direction we are going.

-Oliver Wendell Holmes

The following tables of weights might be kept for future reference...

GEM WEIGHTS

Ads on semi-precious stones specify a price at so much per carat, gram or ounce. The units carat and gram refer only to Troy weight, while the ounce and pound are common to both Troy and avoirdupois weights. There is quite some difference in relative weights - the avoirdupois ounce being lighter by 42.5 grains and the pound heavier by 1240 grains, as can be seen by the following tables.

The table under "comparison" shows the relative difference and will also serve as a conversion table if the units in the left column are to be converted into units of the right hand column, multiply by the factor.

The bulk weights were taken from mechanical engineering handbooks and are averages, therefore all computations are subject to variations.

TROY WEIGHT

1 pound	-	12 ounces	-	5760 grains
1 ounce	-	20 pennyweights	-	480 grains
1 ounce	-	31.103 grams		
1 ounce	-	155.5 carats (Metric)		
1 gram	-	5 carats		
1 carat	-	0.2 gram		
1 carat	-	3.086 grains		

COMPARISON

1 pound Troy	-	12 ounces	-	5760 grains
1 pound Avoirdupois	-	16 ounces	-	7000 grains
1 pound Troy	-	13.166 ounces		
1 pound Avoirdupois	-	14.583 troy ounces		
1 ounce Avoirdupois	-	0.911 troy ounces		

AVOIRDUPOIS WEIGHT

1 pound	-	16 ounces	-	7000 grains
1 ounce	-	28.35 grams		
1 ounce	-	437.5 grains		

COMPARISON

1 pound Avoirdupois	-	16 ounces	-	7000 grains
1 pound Troy	-	12 ounces	-	5760 grains
1 pound Avoirdupois	-	14.583 troy ounces		
1 pound Troy	-	13.166 avdp. ounces		
1 ounce Avoirdupois	-	0.911 troy ounces		
1 ounce Troy	-	1.097 avdp. ounces		

(From The Charles City Seeker via Lap. Reporter, Mr. H. E. Bols, and Show-Me Newsletter)

LINCOLN GEM AND MINERAL CLUB, INC.
P.O. BOX 5342, LINCOLN, NE 68505

The purpose of this corporation shall be to study, promote an interest in, and disseminate knowledge of lapidary and various Earth Sciences including but not necessarily limited to geology, paleontology, and mineralogy. It shall be a particular purpose of the corporation to provide education in these fields to its members and the general public, particularly youth and student groups

MEMBER: Midwest Federation of Mineralogical and Geol. Soc. (MWF)
American Federation of Mineralogical and Soc. (AFMS)
Nebraska State Assoc. of Earth Sci. Clubs, Inc. (NAOESCI)
Community Arts Council of Lincoln (CAC)

REGULAR MEETINGS: 4th Saturday of the month, 7:30 PM, September through May W. O. W. Bldg., 732 S. 27th St. Lincoln, Nebraska.

1973 ELECTED OFFICERS:

President - - -Roger Pabian 300 Sycamore Dr. Lincoln 68510 489-3081
1st Vice Pres.-Ralph Ulrich 3909 Pace Blvd. Lincoln 68502 423-0484
2nd Vice Pres.-Don Lawson 6328 X St. Lincoln 68505 434-2427
Rec. Secretary-Nelda Oliver 5700 Otoe St. Lincoln 68505 489-5222
Treasurer - - -Jim Parks 2435 S. 19th St. Lincoln 68502 423-6798

1973 BOARD MEMBERS:

Tom Simmons - -2970 South St., Lincoln 68502 488-1619
Howard Taylor -910 New Hampshire, Lincoln 68508 432-3707
Don Eckel - - -3858 Randolph Lincoln 68510 488-3678
John Harrison -Hickman, NE 68372 992-3825

STANDING COMMITTEE CHAIRMEN

Betty Crocker Coupons--Helena Baegl
Liason--Roger Simmons
Safety--
Hospitality--Virginia Green
Refreshments-- Carol & Bob Anderson
Membership--Marita Bigley
1973 Show Chairman--Ralph Ulrich, 3909 Pace Blvd. Lincoln, NE 68502 489-2538
Vaja Con Dios--Marie Carveth
Historian--Frances Tracy
Librarian--Kathryn Ulrich
Housing & Properties--Frank Rule
Field Trip--Larry Bigley
1973 Rock Swap--Don Carter, 1101 Driftwood Dr. Lincoln, NE 68510 489-3442
Education--Phyllis Parks
Program--Marie Wells
Calling Committee--Mr. & Mrs. Wilfrid Wittman
Community Arts Council--Rev. Raymond Pfeiffer
NAOESCI Reporter-- Norma Miller
Publications--Art Howlett Chmn., Kathryn Grabher, Phyllis Parks, and Evelyn Ulrich-3521 S. 48th St. Lincoln, NE 68506

1974 SHOW STEERING COMMITTEE

Chairman - Ralph Ulrich Financial Chmn. - Bruce Simon
Sec. & Show Director - Irl Everett Member-at-Large - Howard Taylor

Articles published in the PICK & SHOVEL may be reprinted if credit is given the author and the bulletin, and a copy of the publication to the editor.

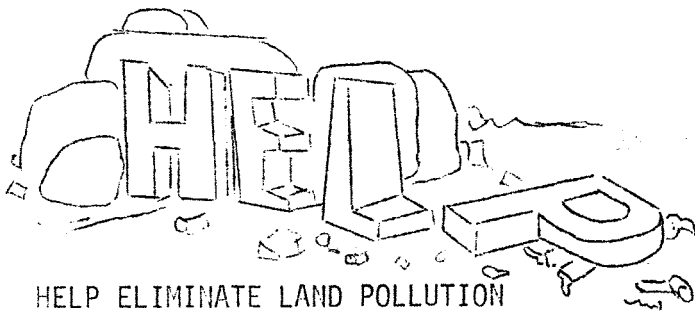
Lincoln Gem & Mineral Club
Box 5342
Lincoln, NE 68505

NON-PROFIT ORG.
U.S. POSTAGE
PAID
LINCOLN, NE
PERMIT NO. 176

Member: Community Arts Council

L.G. & MIN. Club Historian
Frances Tracy
3601 South St.
Lincoln, NE 68506

"THE PLACE TO GO IN '74"
Nat'l Gem & Mineral Show
June 13-16 Lincoln, Nebr.



LINCOLN GEM & MINERAL CLUB - HOST

combined

MWF - AFMS NATIONAL SHOW & CONVENTION
and

NEBRASKA STATE SHOW

JUNE 13-16, 1974, LINCOLN, NEBRASKA